

MUN. RTE.	SECTION	COUNTY	TOTAL SHEETS	SHEET NO.
0309	22-00149-00-PV	JACKSON	37	1
		ILLINOIS	CONTRACT NO. 99718	

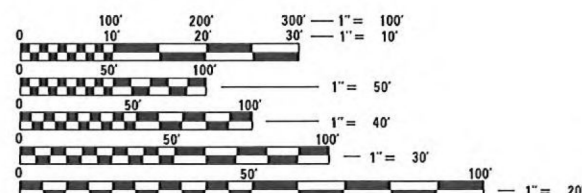
TOTAL SHEETS: 37+4 = 41 SHEETS

INDEX OF SHEETS

1	COVER SHEET
2	GENERAL NOTES
3-4	SUMMARY OF QUANTITIES
5	TYPICAL SECTIONS
6-8	SCHEDULE OF QUANTITIES
9-11	REMOVAL PLAN
12-16	PLAN AND PROFILE
17-21	DRAINAGE AND EROSION CONTROL PLAN
22-24	PAVEMENT MARKING AND SIGNAGE PLAN
24A-24D	STAGING DETAILS
25-26	ENTRANCE DETAILS
27-28	INTERSECTION DETAILS
29-37	CROSS SECTIONS

IDOT HIGHWAY STANDARDS

000001-09	STANDARD SYMBOLS, ABBREVIATIONS AND PATTERNS
001006	DECIMAL OF AN INCH AND OF A FOOT
280001-07	TEMPORARY EROSION CONTROL SYSTEMS
442201-04	CLASS C AND D PATCHES
542301-03	PRECAST REINFORCED CONCRETE FLARED END SECTION
606101-05	TYPE A GUTTER INLET OUTLET AND ENTRANCE
701006-05	OFF-ROAD OPERATIONS, 2L, 2W, 15 FT TO 24 IN FROM PAVEMENT EDGE
701301-04	LANE CLOSURE, 2L, 2W, SHORT TIME OPERATIONS
701311-03	LANE CLOSURE 2L, 2W MOVING OPERATIONS - DAY ONLY
701321-19	LANE CLOSURE, 2L, 2W, BRIDGE REPAIR WITH BARRIER
701501-06	URBAN LANE CLOSURE, 2L SW, UNDIVIDED
701901-11	TRAFFIC CONTROL DEVICES
720001-01	SIGN PANEL MOUNTING DETAILS
720006-04	SIGN PANEL ERECTION DETAILS
720011-01	METAL POSTS FOR SIGNS, MARKERS & DELINEATORS
728001-01	TELESCOPING STEEL SIGN SUPPORT
729001-01	APPLICATIONS OF TYPES A & B METAL POSTS (FOR SIGNS & MARKERS)
780001-05	TYPICAL PAVEMENT MARKINGS
BLR 22-7	TYPICAL APP OF TRAFFIC CONTROL DEVICES FOR CONST ON RURAL LOCAL HIGHWAYS



FULL SIZE PLANS HAVE BEEN PREPARED USING STANDARD ENGINEERING SCALES. REDUCED SIZED PLANS WILL NOT CONFORM TO STANDARD SCALES. IN MAKING MEASUREMENTS ON REDUCED PLANS, THE ABOVE SCALES MAY BE USED.

J.U.L.I.E.
JOINT UTILITY LOCATION INFORMATION FOR EXCAVATORS
1-800-892-0123
OR 811

PLANS PREPARED BY:



4940 Old Collinsville Road
Swansea, Illinois 62226
Tel: 618.624.4488
www.twm-inc.com
Illinois Professional Design Firm
No. 184-001220
License Expires: 4/30/2027
ILLINOIS - MISSOURI - TENNESSEE

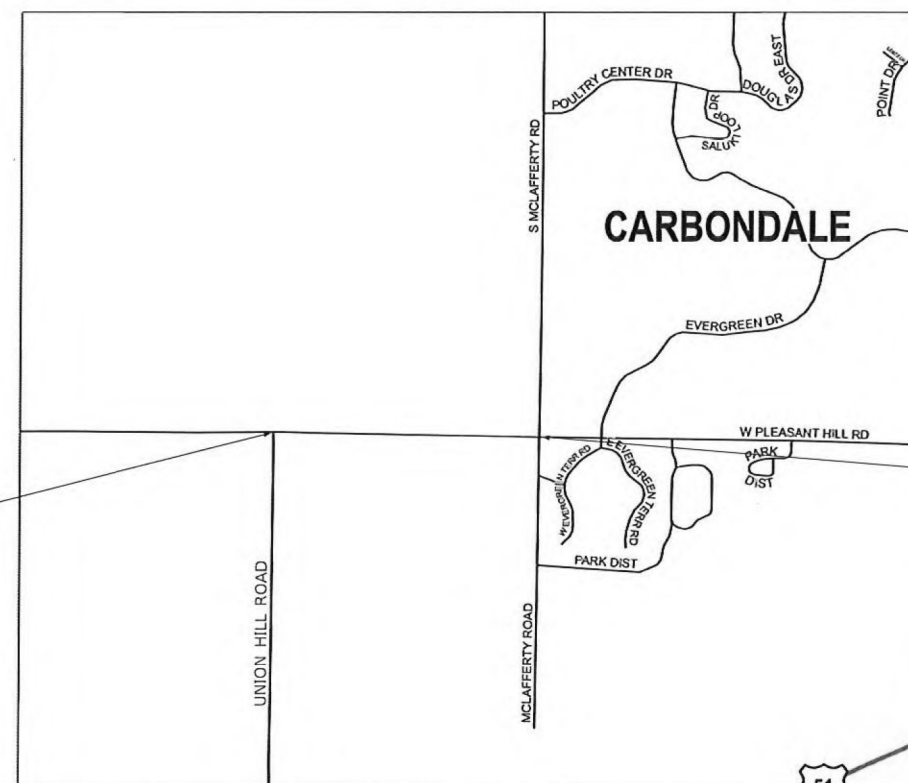
STATE OF ILLINOIS DEPARTMENT OF TRANSPORTATION

PROPOSED HIGHWAY PLANS

MUN ROUTE 0309 (PLEASANT HILL ROAD)
SECTION 22-00149-00-PV
PROJECT NO.: D4VE(713)
JOB NO.: C-99-002-26
RECONSTRUCTION
CITY OF CARBONDALE
JACKSON COUNTY
R1W

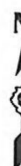
T9S

W PLEASANT HILL ROAD
BEGIN IMPROVEMENTS
STA. 100+44.76
LAT. 37°42'03.85" N
LONG. 89°14'50.53" W

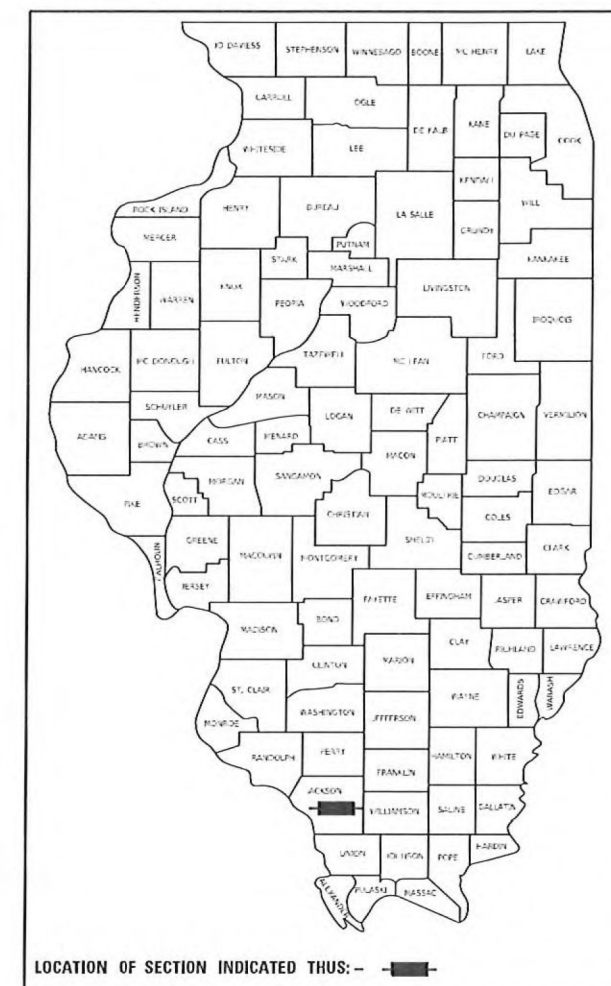


GROSS LENGTH = 2849.89 FT. = 0.540 MILE
NET LENGTH = 2849.89 FT. = 0.540 MILE

W PLEASANT HILL ROAD
END IMPROVEMENTS
STA. 128+94.65
LAT. 37°42'03.12" N
LONG. 89°14'15.38" W



Kevin M. Ostermiller, P.E.
LICENSE NO. 062-066764
8-15-2025
EXPIRATION DATE
11-30-2025



LOCATION OF SECTION INDICATED THUS: — ■ —

CITY OF CARBONDALE
STATE OF ILLINOIS

APPROVED 19 August 20 25
Carolyn Hawley
MAYOR, CITY OF CARBONDALE

PASSED 11-5 20 25
District 9 Engineer
LOCAL ROADS & STREETS

RELEASED FOR
BID BASED ON
LIMITED REVIEW 11-5 20 25
Region Five Engineer

PRINTED BY THE AUTHORITY
OF THE STATE OF ILLINOIS

GENERAL NOTES

ANY AREA DISTURBED OUTSIDE CONSTRUCTION LIMITS DURING CONSTRUCTION SHALL BE RESTORED TO ITS ORIGINAL CONDITION AT THE CONTRACTOR'S EXPENSE.

ALL EXISTING ROADWAY FEATURES, SUCH AS CULVERTS, PAVEMENT, FENCING, ETC., LOCATED WITHIN THE CONSTRUCTION LIMITS ARE TO REMAIN UNLESS NOTED OTHERWISE ON THE PLANS.

IT IS NOT WARRANTED THAT THIS DOCUMENT CONTAINS COMPLETE INFORMATION REGARDING EASEMENTS, RESERVATIONS, RESTRICTIONS, RIGHT-OF-WAYS, BUILDING LINE SETBACKS, AND OTHER ENCUMBRANCES. FOR COMPLETE INFORMATION, A TITLE OPINION OR COMMITMENT FOR TITLE INSURANCE SHOULD BE OBTAINED AND THOROUGHLY REVIEWED.

THE CONTRACTOR IS RESPONSIBLE FOR CONTACTING THE CITY OF CARBONDALE AT LEAST SEVENTY TWO (72) HOURS IN ADVANCE PRIOR TO COMMENCEMENT OF ANY CONSTRUCTION ACTIVITIES OR WORK REQUIRING INSPECTION OR APPROVAL BY THE AFFECTED UNITS OF GOVERNMENT.

EROSION CONTROL

IT IS THE CONTRACTOR'S RESPONSIBILITY TO ENSURE THAT ALL EROSION AND DISPLACED SEDIMENT DOES NOT MIGRATE OFF SITE. ANY SEDIMENT OR EROSION DAMAGE WHICH OCCURS OFF-SITE SHALL BE REPAIRED BY THE CONTRACTOR AT HIS/HER EXPENSE.

SIGNS AND MAILBOXES

ALL SIGNS AND MAILBOXES THAT CONFLICT WITH CONSTRUCTION ACTIVITIES SHALL BE REMOVED AND RESET BY THE CONTRACTOR AT NO ADDITIONAL COST.

ANY DAMAGE SHALL BE THE RESPONSIBILITY OF THE CONTRACTOR.

SEEDING

THE CONTRACTOR SHALL BE RESPONSIBLE FOR THE MAINTENANCE OF THE SEEDED AREAS UNTIL ADEQUATE GRASS COVER IS ACHIEVED. ALL WASHOUT SHALL BE FILLED AND RE-SEEDED. ANY AREAS THAT DO NOT ATTAIN A GRASS COVER 30 DAYS AFTER SEEDING SHALL ALSO BE RE-SEEDED.

UTILITIES

ILLINOIS STATE LAW REQUIRES A 48-HOUR NOTICE BE GIVEN TO ALL UTILITIES BEFORE DIGGING. FIELD MARKING OF FACILITIES MAY BE OBTAINED BY CONTACTING J.U.L.I.E. OR FOR NON-MEMBERS, THE UTILITY COMPANY DIRECTLY. AGENCIES KNOWN TO HAVE FACILITIES WITHIN THE PROJECT AREA ARE AS FOLLOWS:

- *AMEREN ILLINOIS
- *CLEARWAVE COMMUNICATIONS
- *CITY OF CARBONDALE
- *EGYPTIAN ELECTRIC COOP
- *FRONTIER COMMUNICATIONS
- *MEDIACOM
- *SOUTH HIGHWAY WATER DISTRICT
- *SIU - CAMPUS FACILITIES
- *ZITO MEDIA

MEMBERS OF J.U.L.I.E. CALL TOLL FREE (800) 892-0123 OR 811 AND ARE INDICATED BY *
NON-J.U.L.I.E. MEMBERS MUST BE NOTIFIED INDIVIDUALLY.

NO J.U.L.I.E. SURVEY WAS PERFORMED DURING THE DESIGN OF THESE PLANS.

THE ENGINEER AND OWNER DO NOT WARRANT THAT ALL UTILITIES HAVE BEEN ILLUSTRATED ON THE DOCUMENTS. THE CONTRACTOR IS SOLELY RESPONSIBLE FOR CONTACTING J.U.L.I.E. FOR FIELD VERIFICATION OF ALL UTILITIES ON THE SITE PRIOR TO COMMENCEMENT OF CONSTRUCTION. IF THE CONTRACTOR DETERMINES THE LOCATION OF THE FIELD VERIFIED UTILITIES WOULD SIGNIFICANTLY AFFECT THE FUNCTION, COST, OR PERFORMANCE OF THE PROJECT, THE CONTRACTOR SHALL IMMEDIATELY CONTACT THE ENGINEER FOR PROJECT DIRECTION.

ANY FACILITIES OR APPURTENANCES, WHICH ARE THE PROPERTY OF ANY PUBLIC UTILITY LOCATED WITHIN THE LIMITS OF CONSTRUCTION AND AFFECTING CONSTRUCTION ACTIVITIES, SHALL BE RELOCATED OR ADJUSTED BY THEIR RESPECTIVE OWNERS UNLESS OTHERWISE INDICATED ON THE PLANS. THE CONTRACTOR SHALL NOTIFY AND COOPERATE WITH THE OWNERS OF ANY SUCH FACILITY IN THEIR REMOVAL/ADJUSTMENTS AND ADJUST HIS OR HER OPERATIONS IN ORDER THAT THE UTILITY'S OPERATIONS AND THE CONSTRUCTION OF THE PROJECT MAY PROGRESS IN A REASONABLE MANNER.

PROPERTY OWNERS

ACCESS MUST BE MAINTAINED TO ALL EXISTING PROPERTIES DURING CONSTRUCTION. SHOULD SHORT TERM CLOSURES BE NEEDED, THE CONTRACTOR MUST MAKE WRITTEN ARRANGEMENTS WITH THE PROPERTY OWNERS AND COPY THE ENGINEER.

REMOVAL ITEMS

ALL MATERIALS SCHEDULED FOR REMOVAL SHALL BE DISPOSED OF BY THE CONTRACTOR AT HIS/HER EXPENSE.

THE SAW CUTTING OF EXISTING ITEMS SHALL BE INCLUDED IN THE COST OF THE ITEM FOR WHICH THE SAW CUT IS BEING MADE.

THE CONTRACTOR SHALL USE CARE IN PROTECTING EXISTING MANHOLES, INLETS, AND WATER VALVES DURING THE REMOVAL OPERATION. ANY NECESSARY ADJUSTMENTS TO THE EXISTING MANHOLES AND WATER VALVES WILL BE PERFORMED BY THE CONTRACTOR.

EMERGENCY CONTACT

ROBERT HARDIN
CITY OF CARBONDALE
200 S ILLINOIS AVE
CARBONDALE, IL 62901
(618) 457-3270

PAVING

BITUMINOUS MATERIALS APPLICATION RATE:
TACK COAT:
ON HMA LIFTS = 0.025 LB/SQ FT
ON AGGREGATE = 0.025 LB/SQ FT

A RAPID CURE NTEA IDOT APPROVED TACK WILL BE REQUIRED. NO TRACKING WILL BE PERMITTED.

COMMITMENTS

NONE.

HOT-MIX ASPHALT MIXTURE REQUIREMENTS

LOCATION	W PLEASANT HILL ROAD			
MIXTURE USE	BINDER	SURFACE	SHOULDERS	PATCHING
THICKNESS	5 1/2"	1 1/2"	8"	6"
AC/PG	PG 64-22	PG 64-22	PG 64-22	PG 64-22
RAP % (MAX)	SEE SPEC BOOK SECTION 1031	SEE SPEC BOOK SECTION 1031	SEE SPEC BOOK SECTION 1031	SEE SPEC BOOK SECTION 1031
DESIGN AIR VOIDS	4.0% @ Ndes = 70	4.0% @ Ndes = 70	4.0% @ Ndes = 70	4.0% @ Ndes = 70
MIXTURE COMPOSITION	IL - 19.0	IL - 9.5	IL - 9.5 & IL - 19.0	IL - 19.0
FRICTION AGGREGATE	MIXTURE "C"	MIXTURE "C"	MIXTURE "C"	MIXTURE "C"
MIXTURE WEIGHT	115 LBS/SQ YD/IN	115 LBS/SQ YD/IN	115 LBS/SQ YD/IN	115 LBS/SQ YD/IN
QUALITY MANAGEMENT PROGRAM	QC/QA	QC/QA	QC/QA	QC/QA
MATERIAL TRANSFER DEVICE REQUIRED	NO	NO	NO	NO

MODEL Default
FILE NAME: P:\2021\01112\4 CADD - DWG\4.7 Tran\CADD_Sheet\0111132-eh-genotes.dgn



TWM, INC.
WWW.TWM-INC.COM

IL DESIGN FIRM
LICENSE NO:
184-001220

USER NAME	= kostermiller
DESIGNED	-
DRAWN	-
PLOT SCALE	= 40.0000 ' / in.
PLOT DATE	= 1/8/2026

DESIGNED	-
CHECKED	-
DATE	-

REVISED	-	01/12/2026	1
REVISED	-		
REVISED	-		
REVISED	-		



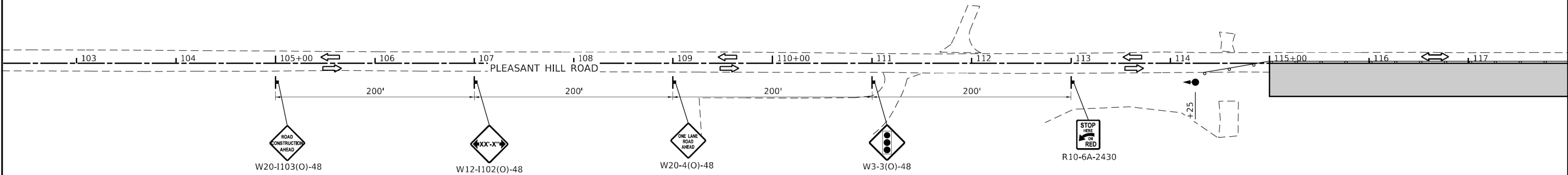
CITY OF CARBONDALE

GENERAL NOTES AND COMMITMENTS

SCALE: N.T.S. SHEET 1 OF 1 SHEETS STA. TO STA.

MUN. RTE.	SECTION	COUNTY	TOTAL SHEETS	SHEET NO.
0309	22-00149-00-PV	JACKSON	37	2
			CONTRACT NO. 99718	
		ILLINOIS	FED. AID PROJECT	

STAGE 1A



LEGEND

TRAFFIC FLOW ARROW

DRUMS OR BARRICADES WITH STEADY BURNING BI-DIRECTIONAL WARNING LIGHTS AT 20' CTS.

WORK ZONE

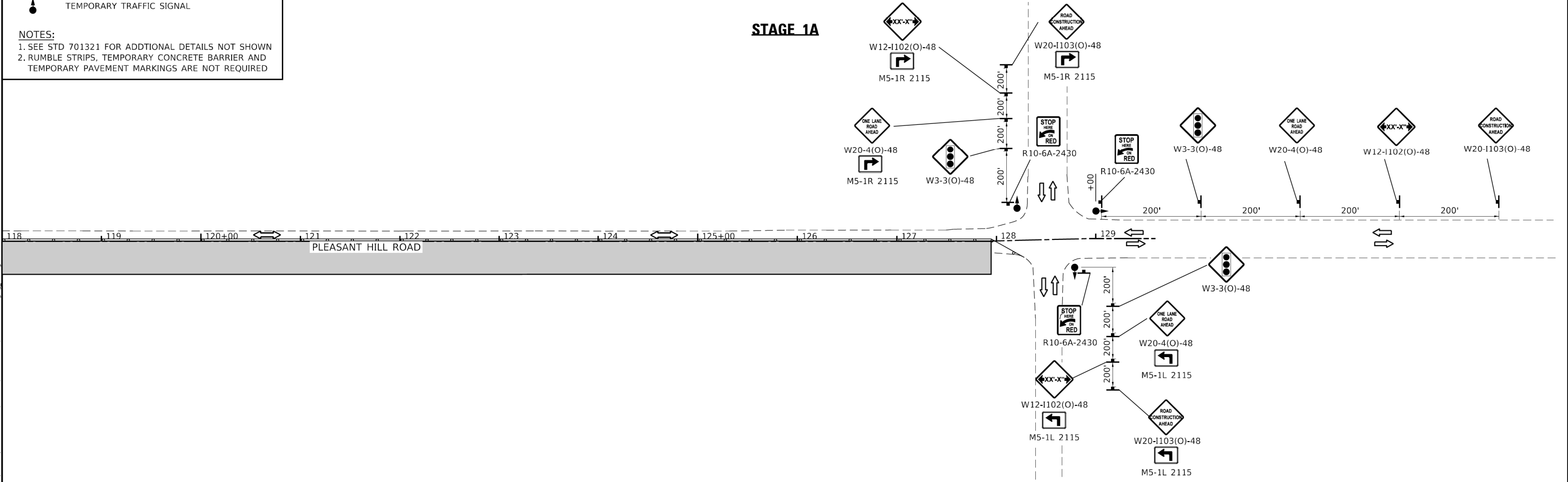
TEMPORARY TRAFFIC SIGNAL

NOTES:

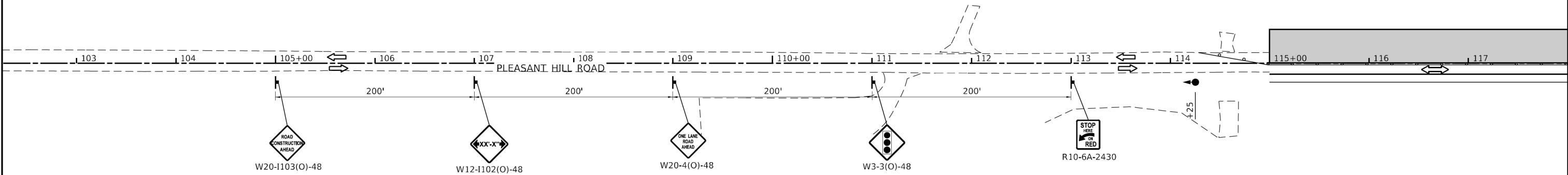
1. SEE STD 701321 FOR ADDITIONAL DETAILS NOT SHOWN

2. RUMBLE STRIPS, TEMPORARY CONCRETE BARRIER AND TEMPORARY PAVEMENT MARKINGS ARE NOT REQUIRED

STAGE 1A



STAGE 1B

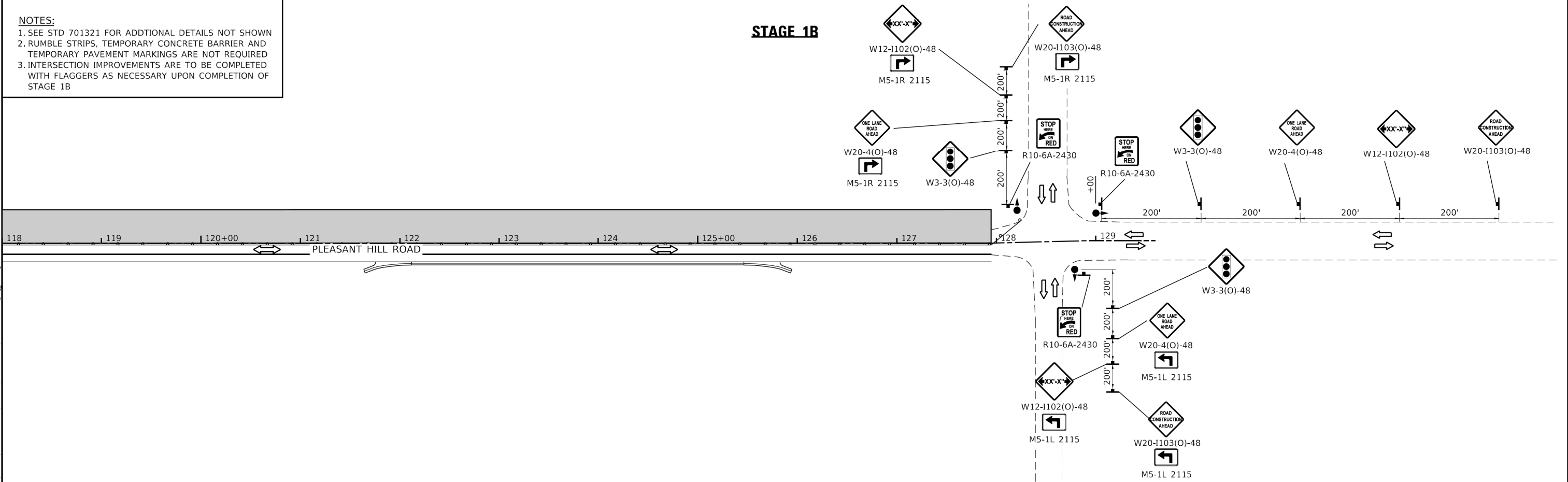


LEGEND

- TRAFFIC FLOW ARROW
- DRUMS OR BARRICADES WITH STEADY BURNING BI-DIRECTIONAL WARNING LIGHTS AT 20' CTS.
- WORK ZONE
- TEMPORARY TRAFFIC SIGNAL

- NOTES:
- SEE STD 701321 FOR ADDITIONAL DETAILS NOT SHOWN
 - RUMBLE STRIPS, TEMPORARY CONCRETE BARRIER AND TEMPORARY PAVEMENT MARKINGS ARE NOT REQUIRED
 - INTERSECTION IMPROVEMENTS ARE TO BE COMPLETED WITH FLAGGERS AS NECESSARY UPON COMPLETION OF STAGE 1B

STAGE 1B



TWM, INC.
WWW.TWM-INC.COM
IL DESIGN FIRM
LICENSE NO:
184-001220

USER NAME = kostermiller
DESIGNED -
DRAWN -
CHECKED -
DATE -
PLOT SCALE = 1200,0000 ' / ft.
PLOT DATE = 1/8/2026

DESIGNED -
DRAWN -
CHECKED -
DATE -

REVISED - 01/12/2026
REVISED -
REVISED -
REVISED -



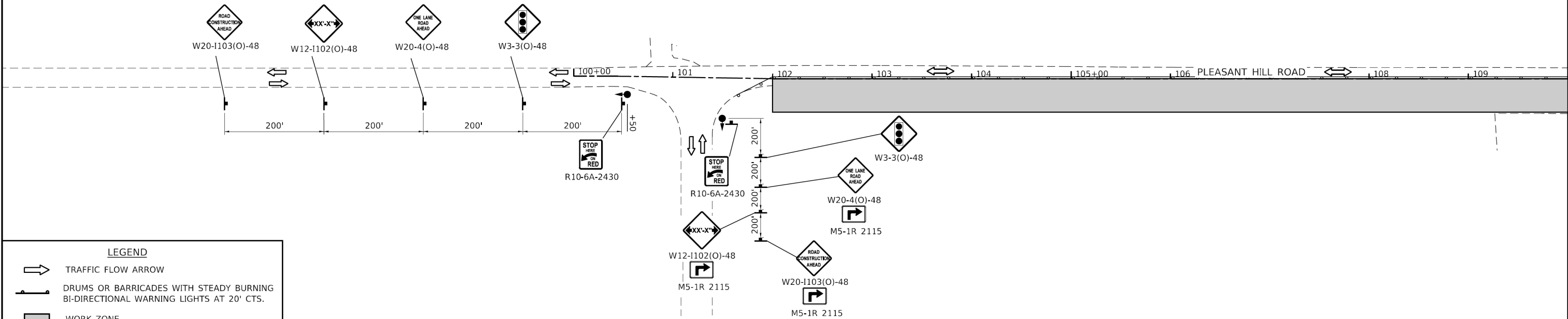
CITY OF CARBONDALE

STAGING DETAILS
PLEASANT HILL ROAD - STAGE 1B

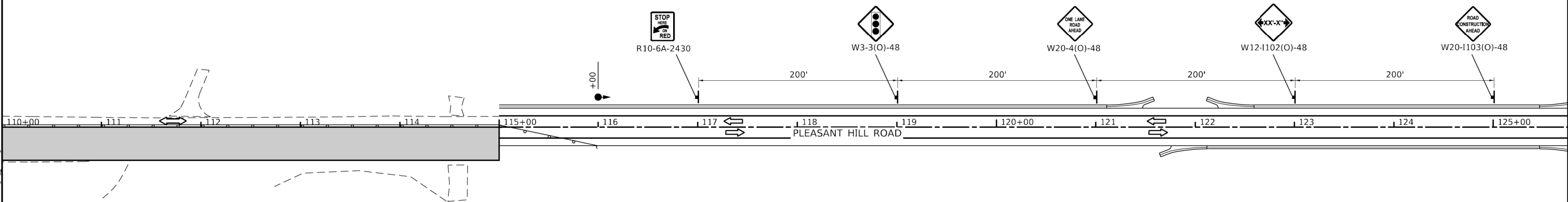
SCALE: 1"=50' SHEET 2 OF 4 SHEETS STA. 102+75.00 TO STA. 128+94.65

MUN. RTE.	SECTION	COUNTY	TOTAL SHEETS	SHEET NO.
0309	22-00149-00-PV	JACKSON	37	24B
CONTRACT NO. 99718				
ILLINOIS FED. AID PROJECT				

STAGE 2A



STAGE 2A



MODEL Default
FILE NAME: P:\2021\12111224 CADD - DWG\4.7 Tran\CADD Sheets\111132-sh-staging 02A.dgn



TWM, INC.
WWW.TWM-INC.COM
IL DESIGN FIRM
LICENSE NO:
184-001220

USER NAME	= kostermiller
DESIGNED -	
DRAWN -	
CHECKED -	
DATE -	
PLOT SCALE	= 1200.0000 ' / ft.
PLOT DATE	= 1/8/2026

DESIGNED -	
DRAWN -	
CHECKED -	
DATE -	

REVISED -	01/12/2026	1
REVISED -		
REVISED -		
REVISED -		



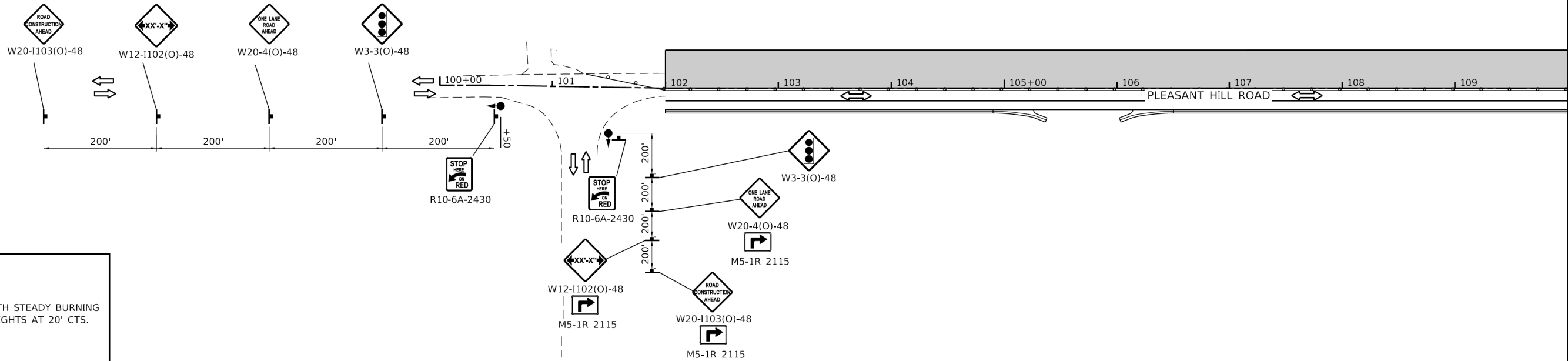
CITY OF CARBONDALE

STAGING DETAILS
PLEASANT HILL ROAD - STAGE 2A

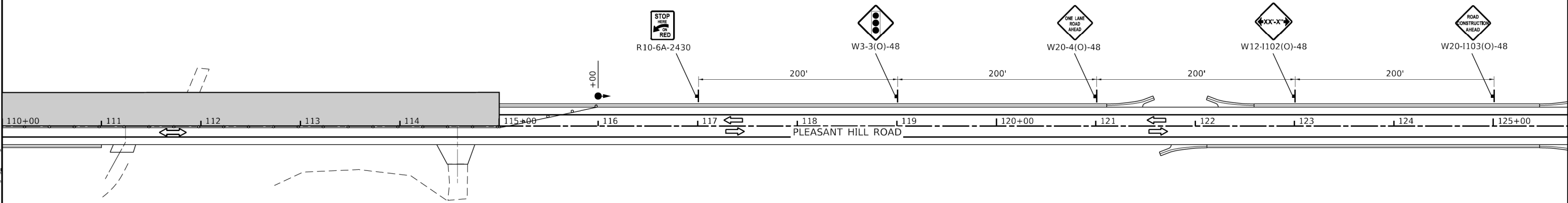
SCALE: 1"=50'	SHEET 3	OF 4	SHEETS	STA. 100+00.00	TO STA. 125+75.00
---------------	---------	------	--------	----------------	-------------------

MUN. RTE.	SECTION	COUNTY	TOTAL SHEETS	SHEET NO.
0309	22-00149-00-PV	JACKSON	37	24C
CONTRACT NO. 99718				
ILLINOIS FED. AID PROJECT				

STAGE 2B



STAGE 2B



MODEL Default
FILE NAME: P:\2021\1111224 CADD - DWG\4.7 Tran\CADD Sheets\11111224-sh-caddings 03B.dwg