

STATE OF ILLINOIS  
DEPARTMENT OF TRANSPORTATION

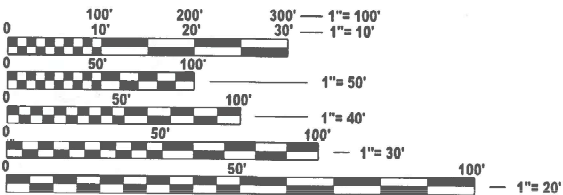
F.A.I RTE.	SECTION	COUNTY	TOTAL SHEETS	SHEET NO.
55	2025-2028-LR	*VARIOUS	6	1
		ILLINOIS	CONTRACT NO. 80B86	
*COOK, DUPAGE & WILL				

FOR INDEX OF SHEETS, SEE SHEET NO. 2

PROPOSED  
HIGHWAY PLANS

FAI ROUTE 55 (I-55 STEVENSON)  
REED RD TO LAKE SHORE DR  
SECTION 2025-2028-LR  
EXPRESSWAY HIGHWAY CLEANING (LITTER/DEBRIS REMOVAL)  
COUNTIES: COOK, DUPAGE & WILL

C-91-045-26



FULL SIZE PLANS HAVE BEEN PREPARED USING STANDARD  
ENGINEERING SCALES. REDUCED SIZED PLANS WILL NOT  
CONFORM TO STANDARD SCALES. IN MAKING MEASUREMENTS  
ON REDUCED PLANS, THE ABOVE SCALES MAY BE USED.

J.U.L.I.E.  
JOINT UTILITY LOCATION INFORMATION FOR EXCAVATION  
1-800-892-0123  
OR 811

PROJECT ENGINEER OSCAR OLIVEROS - (847)-705-4548  
PROJECT MANAGER JACEK EJMONT - (847) 705-4641

CONTRACT NO. 80B86

GROSS LENGTH = x.xx FT. = x.xxx MILE  
NET LENGTH = x.xx FT. = x.xxx MILE

LOCATION MAP - SEE INDEX OF SHEETS

STATE OF ILLINOIS  
DEPARTMENT OF TRANSPORTATION

SUBMITTED Oct 20<sup>th</sup> 2025 IR

December 5, 2025  
[Signature]  
REGIONAL ENGINEER

December 5, 2025  
[Signature]  
ENGINEER OF DESIGN AND ENVIRONMENT

December 5, 2025  
[Signature]  
DIRECTOR OF HIGHWAYS PROJECT IMPLEMENTATION

PRINTED BY THE AUTHORITY  
OF THE STATE OF ILLINOIS

INDEX OF SHEETS

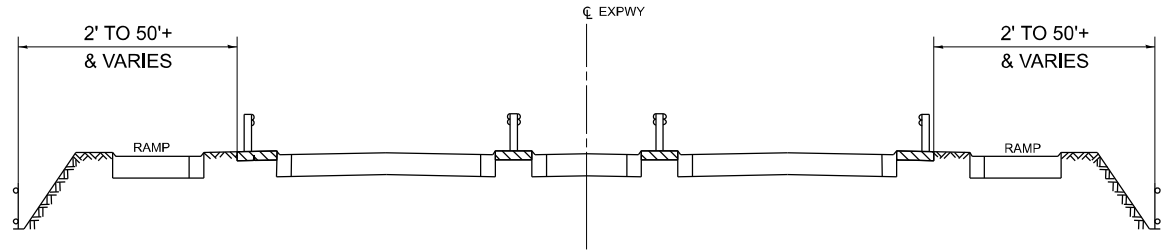
SHEET NO.	DESCRIPTION
1	TITLE SHEET
2	INDEX OF SHEETS AND STATE STANDARDS
3	GENERAL NOTES, SUMMARY OF QUANTITIES, & TYPICAL EXPRESSWAY CROSS-SECTIONS
4	I-55 EXPRESSWAY CLEANING MAP LAKE SHORE DR TO I-355
5	I-55 EXPRESSWAY CLEANING MAP I-355 TO REED RD
6	TRAFFIC CONTROL DETAILS FOR FREEWAY SHOULDER CLOSURES AND PARTIAL RAMP CLOSURES (TC-17)

STATE STANDARDS

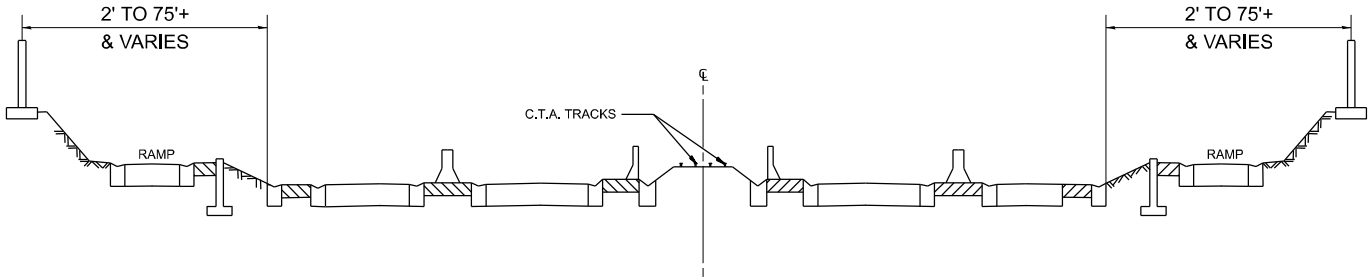
STANDARD NO.	DESCRIPTION
701106-02	OFF-ROAD OPERATION MULTILANE, MORE THAN 15' AWAY
701426-09	LANE CLOSURE, MULTILANE, INTERMITTENT OR MOVING OPER., FOR SPEEDS > 45 MPH
701901-11	TRAFFIC CONTROL DEVICES

MODEL: GenNotesSh01 [Sheet]  
FILE NAME: c:\pw\_work\pwtd\thanh.vo@illinois.gov\168683\D103926-sh1-gennote.dgn

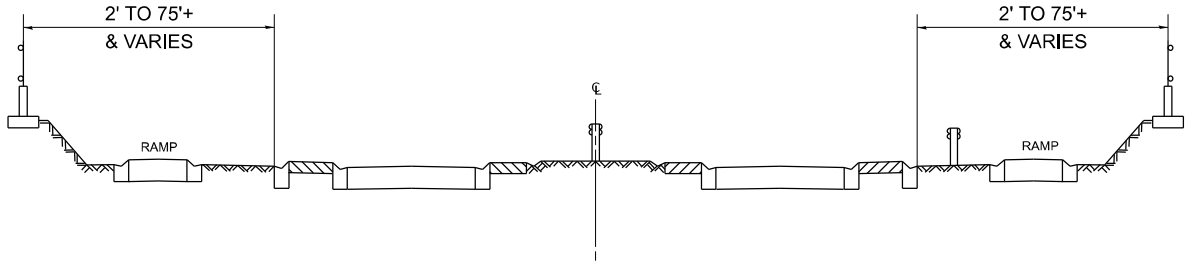
	USER NAME = thanh.vo	DESIGNED -	REVISED -	STATE OF ILLINOIS DEPARTMENT OF TRANSPORTATION	INDEX OF SHEETS AND STATE STANDARDS			F.A.I RTE.	SECTION	COUNTY	TOTAL SHEETS	SHEET NO.
		DRAWN -	REVISED -					55	2025-2028-LR	*VARIOUS	6	2
		CHECKED -	REVISED -					CONTRACT NO. 80B86				
	PLOT DATE = 10/6/2025	DATE -	REVISED -		SCALE:	SHEET 1	OF 1	SHEETS	STA.	TO STA.	ILLINOIS FED. AID PROJECT	



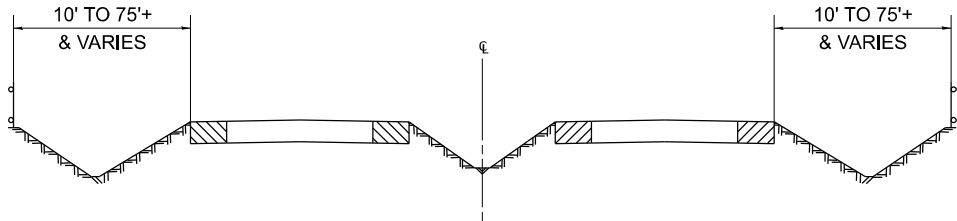
TYPICAL EXPRESSWAY CROSS-SECTION NO. 1



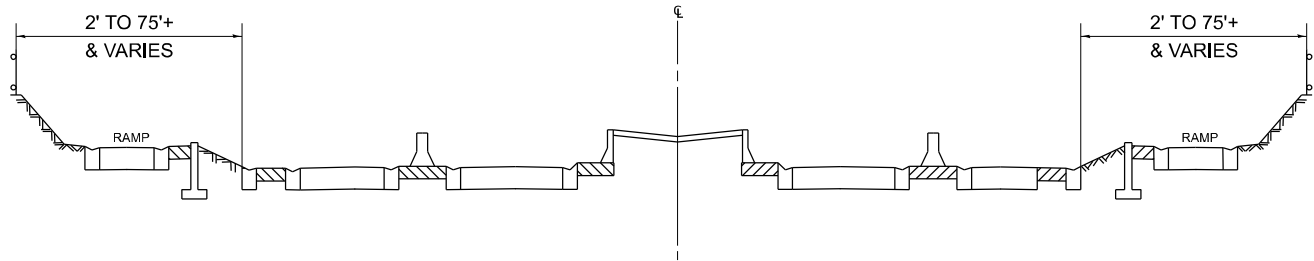
TYPICAL EXPRESSWAY CROSS-SECTION NO. 2



TYPICAL EXPRESSWAY CROSS-SECTION NO. 3



TYPICAL EXPRESSWAY CROSS-SECTION NO. 4



TYPICAL EXPRESSWAY CROSS-SECTION NO. 5

NOTES:

- SCHEDULE MAY VARY AS DIRECTED BY THE ENGINEER.
- NO DAILY CONTRACTOR WORK REQUESTS/SCHEDULING SHALL BE AUTHORIZED OR APPROVED TO START WHEN IT IS DETERMINED BY THE ENGINEER THAT WEATHER CONDITIONS WILL BE UNFAVORABLE. APPROVAL OF DAILY CONTRACTOR WORK SCHEDULE REQUEST SHALL BE SOLELY DETERMINED BY THE ENGINEER.
- ALL SHOULDER CLOSURES SHALL BE IMMEDIATELY REMOVED DURING ALL ADVERSE WEATHER CONDITIONS WITHOUT EXCEPTION, INCLUDING BUT NOT LIMITED TO RAIN, WET ROAD SURFACE (SPRAY FROM TIRES), MIST, DRIZZLE, SLEET, SNOW, FOG AND ANY OTHER CIRCUMSTANCE DETERMINED UNSAFE BY THE ENGINEER. THE CONTRACTOR SHALL IMPLEMENT THIS CONTRACT REQUIREMENT IMMEDIATELY WITHOUT WAITING FOR DEPARTMENT'S INSTRUCTION.
- NO WORK WILL BE ALLOWED ON THE FOLLOWING LEGAL HOLIDAYS UNLESS IT IS CONSIDERED AN EMERGENCY, IMMEDIATE HAZARD OR ANY WORK AS DESIGNATED BY THE DEPARTMENT THAT REQUIRES FIRST PRIORITY CORRECTIVE ACTION:  
  
EASTER HOLIDAY  
MEMORIAL DAY HOLIDAY  
INDEPENDENCE DAY HOLIDAY  
LABOR DAY HOLIDAY  
THANKSGIVING HOLIDAY  
CHRISTMAS HOLIDAY  
NEW YEARS HOLIDAY
- A REQUIRED MINIMUM OF 3 WORKING CREWS WITH A MINIMUM LABOR FORCE CONSISTING OF 5 PERSONNEL PER EACH OF THE 3 WORKING CREWS SHALL BE AVAILABLE AND PROVIDED FOR THIS WORK.

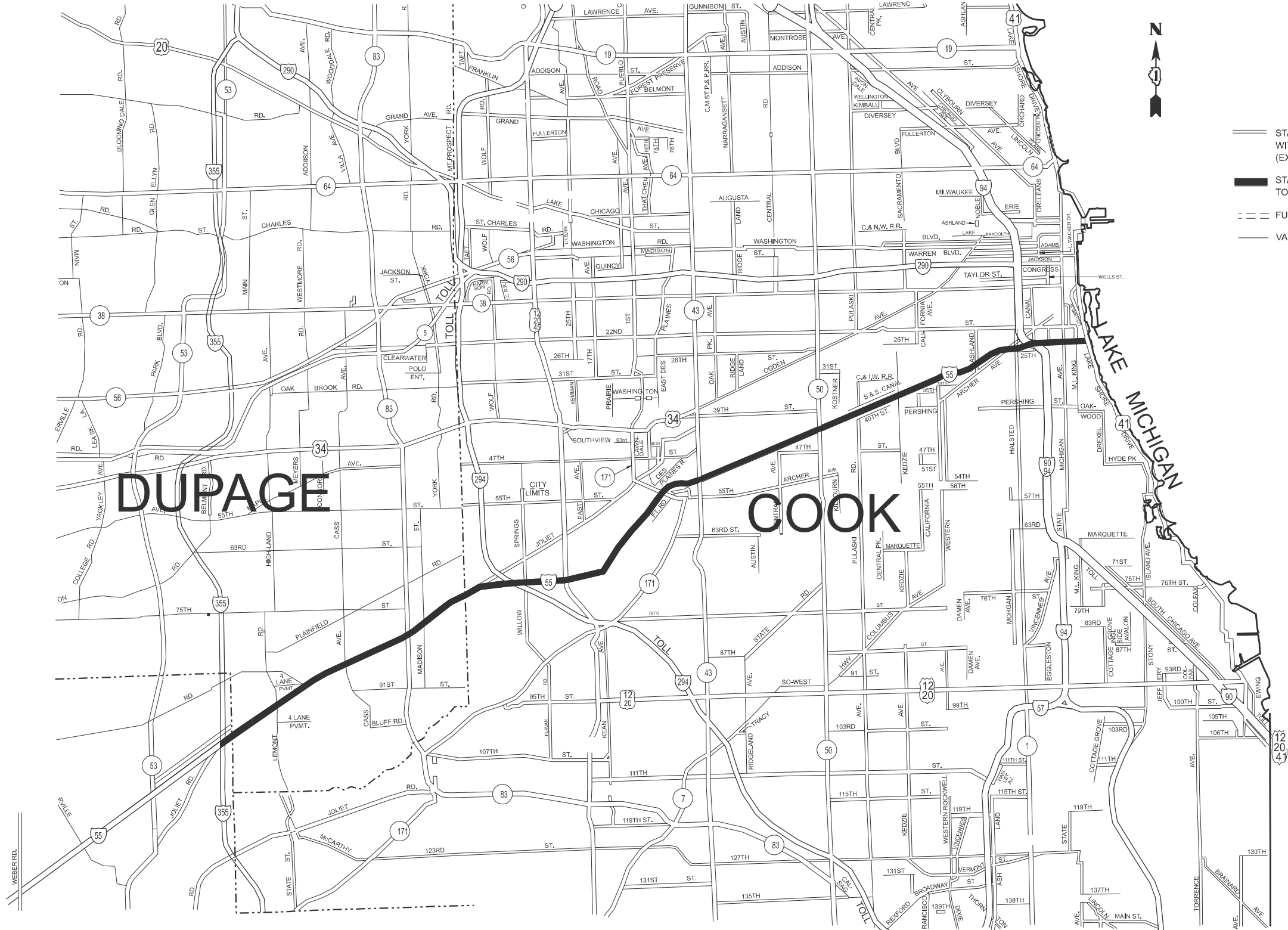
SUMMARY OF QUANTITIES

			COOK		DUPAGE	WILL
			URBAN	100 % STATE 0044	100 % STATE 0044	100 % STATE 0044
CODE NO.	ITEM	UNIT	TOTAL QUANTITIES	EXPRESSWAY	EXPRESSWAY	EXPRESSWAY
X0326643	LITTER PICKING	MILE	1305.1	731.3	168.8	405

MODEL: Untitled [Sheet]  
FILE NAME: c:\p\work\tothanh.vo\illinois.gov\1168683\103026-sh-typical.dgn

	USER NAME = thanh.vo	DESIGNED -	REVISED -	STATE OF ILLINOIS DEPARTMENT OF TRANSPORTATION	GENERAL NOTES, SUMMARY OF QUANTITIES, & TYPICAL EXPRESSWAY CROSS-SECTIONS			F.A.I RTE.	SECTION	COUNTY	TOTAL SHEETS	SHEET NO.
		DRAWN -	REVISED -					55	2025-2028-LR	*VARIOUS	6	3
		CHECKED -	REVISED -					CONTRACT NO. 80B86				
	PLOT DATE = 10/20/2025	DATE -	REVISED -					ILLINOIS FED. AID PROJECT				
SCALE: 1"=50'			SHEET 1	OF 1	SHEETS	STA.	TO STA.	*COOK, DUPAGE & WILL				

MODEL: DetailSheet01 (Sheet)  
FILE NAME: c:\pwworking\willcohanh.vo\illinois.gov\1168683\103926-sh-detailed3.dgn



USER NAME	= thanh.vo	DESIGNED	-	REVISED	-
		DRAWN	-	REVISED	-
		CHECKED	-	REVISED	-
PLOT DATE	= 10/3/2025	DATE	-	REVISED	-

STATE OF ILLINOIS  
DEPARTMENT OF TRANSPORTATION

I-55 STEVENSON EXPRESSWAY CLEANING MAP  
LAKE SHORE DRIVE TO I-355

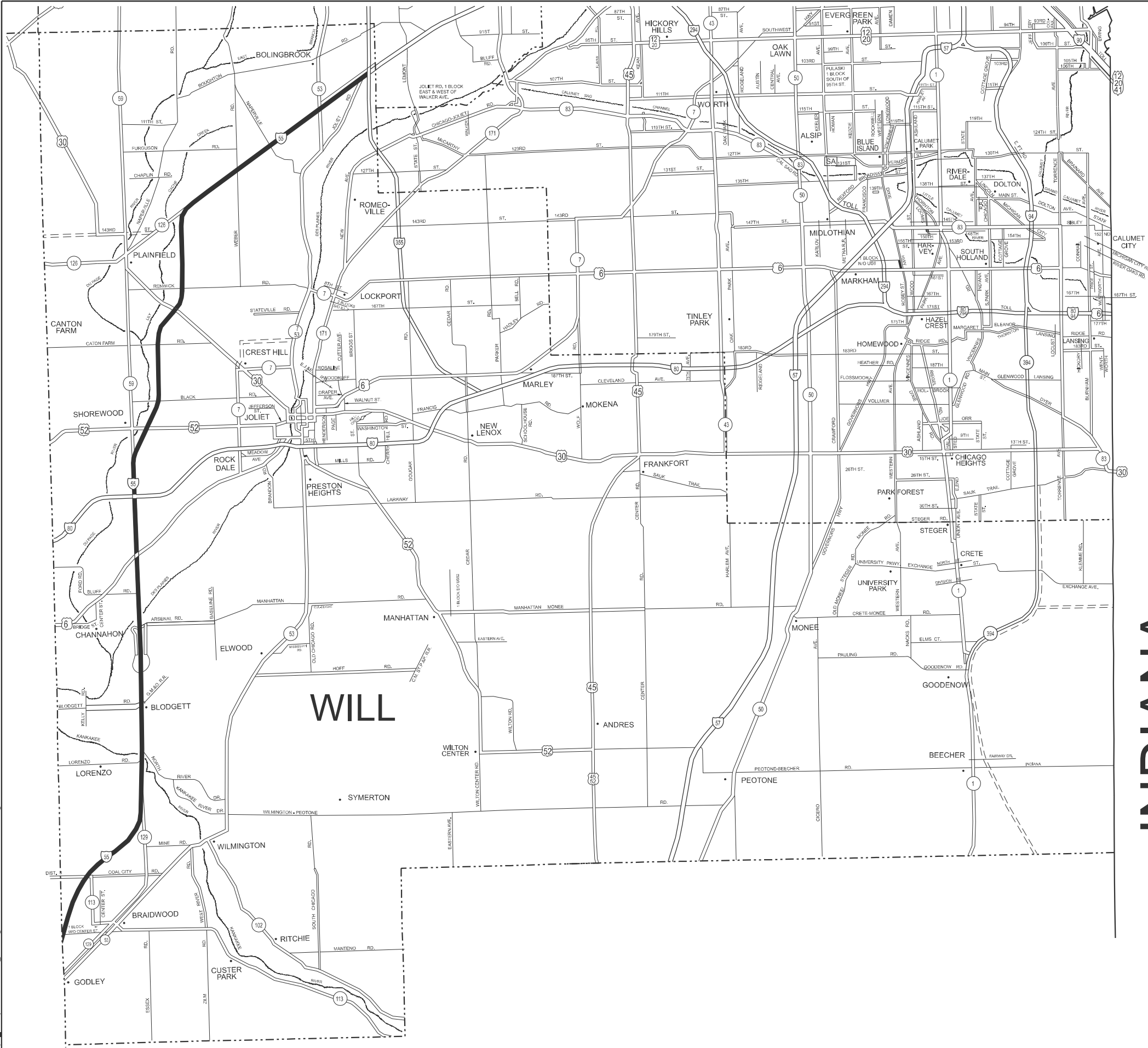
SCALE: SHEET 1 OF 2 SHEETS STA. TO STA.

F.A.I RTE.	SECTION	COUNTY	TOTAL SHEETS	SHEET NO.
55	2025-2028-LR	VARIOUS	6	4
CONTRACT NO. 80B86				
ILLINOIS FED. AID PROJECT				

COOK, DUPAGE & WILL



MODEL: MAP [Sheet]  
FILE NAME: c:\p\work\will\thanh.vo\illinois.gov\1168683\103926-sh-detaill2.dgn



INDIANA

USER NAME = thanh.vo	DESIGNED -	REVISED -
	DRAWN -	REVISED -
	CHECKED -	REVISED -
PLOT DATE = 10/6/2025	DATE -	REVISED -

STATE OF ILLINOIS  
DEPARTMENT OF TRANSPORTATION

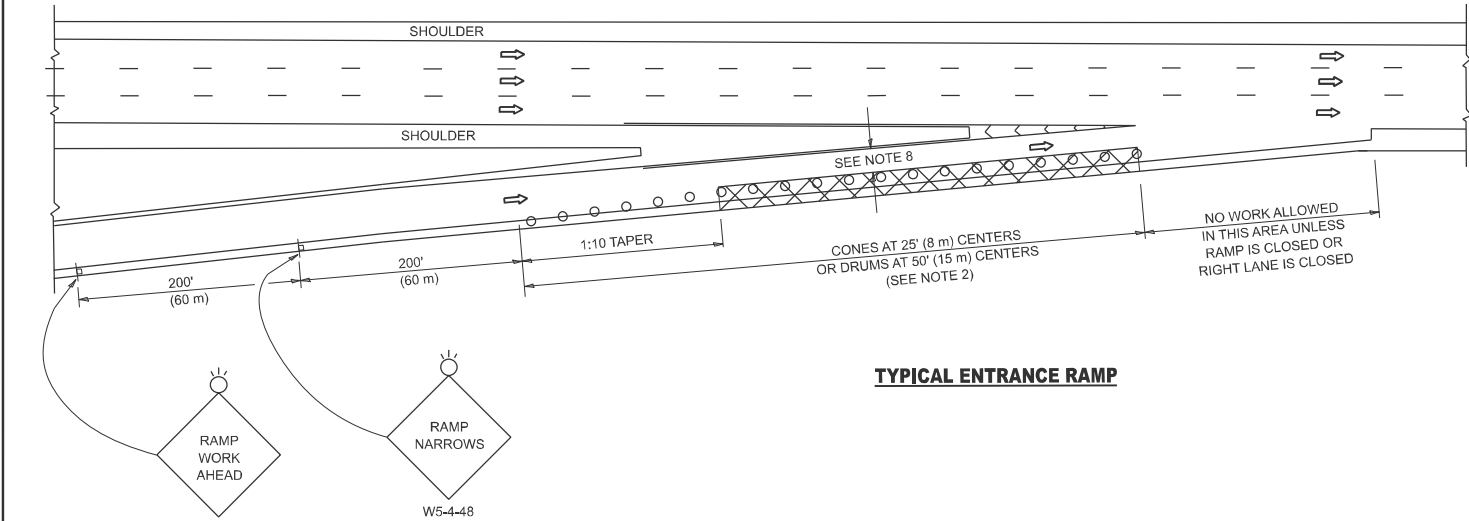
I-55 EXPRESSWAY CLEANING MAP  
I-355 TO REED RD

SCALE: SHEET 2 OF 2 SHEETS STA. TO STA.

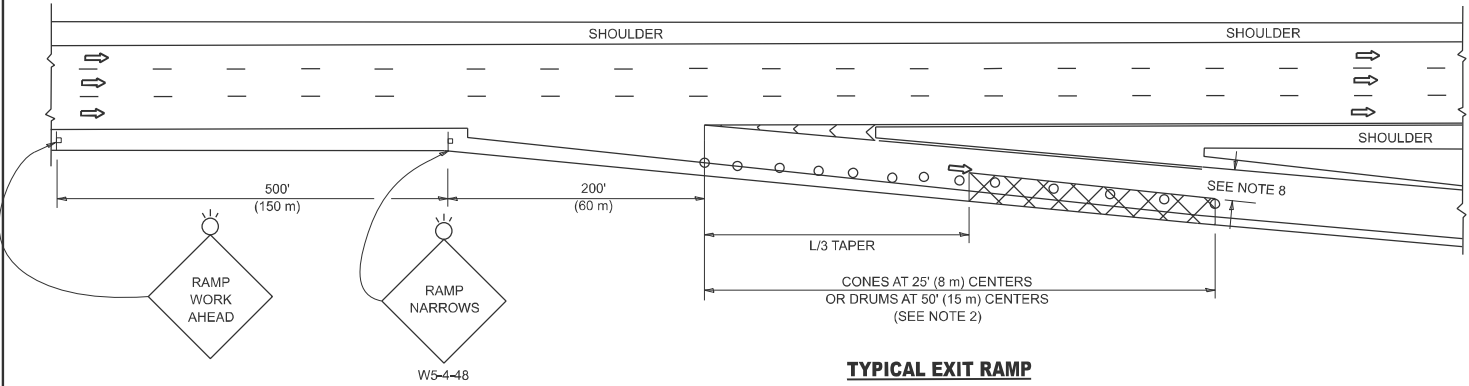
F.A.I RTE.	SECTION	COUNTY	TOTAL SHEETS	SHEET NO.
55	2025-2028-LR	VARIOUS	6	5
CONTRACT NO. 80B86				
ILLINOIS FED. AID PROJECT				

COOK, DUPAGE & WILL

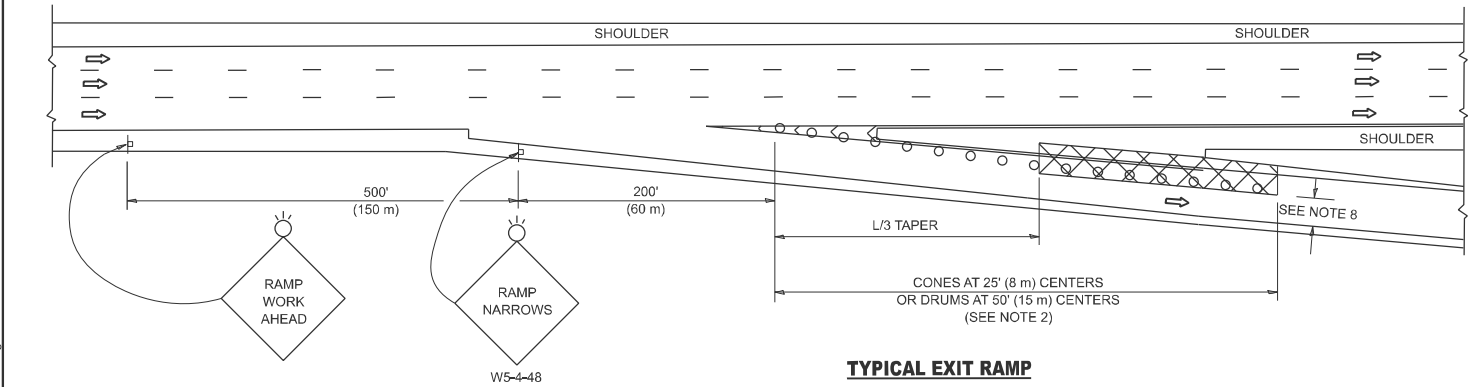
PARTIAL RAMP CLOSURE DETAILS



TYPICAL ENTRANCE RAMP



TYPICAL EXIT RAMP



TYPICAL EXIT RAMP

SYMBOLS

- ACTIVE WORK AREA
- SIGN ON PORTABLE OR PERMANENT SUPPORT
- FLAGGER WITH CONTROL SIGN
- TYPE II BARRICADE OR DRUM
- CONE, DRUM OR BARRICADE
- IMPACT ATTENUATOR OF TYPE AND TEST LEVEL SPECIFIED

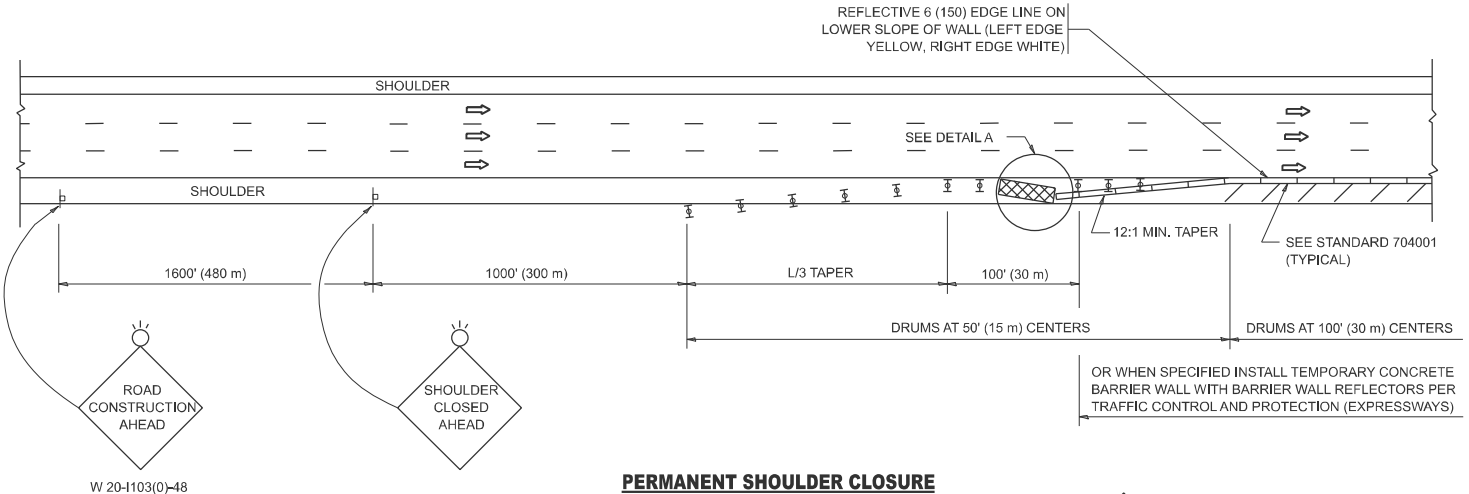
GENERAL NOTES:

- THE "L" DISTANCE EQUALS:  

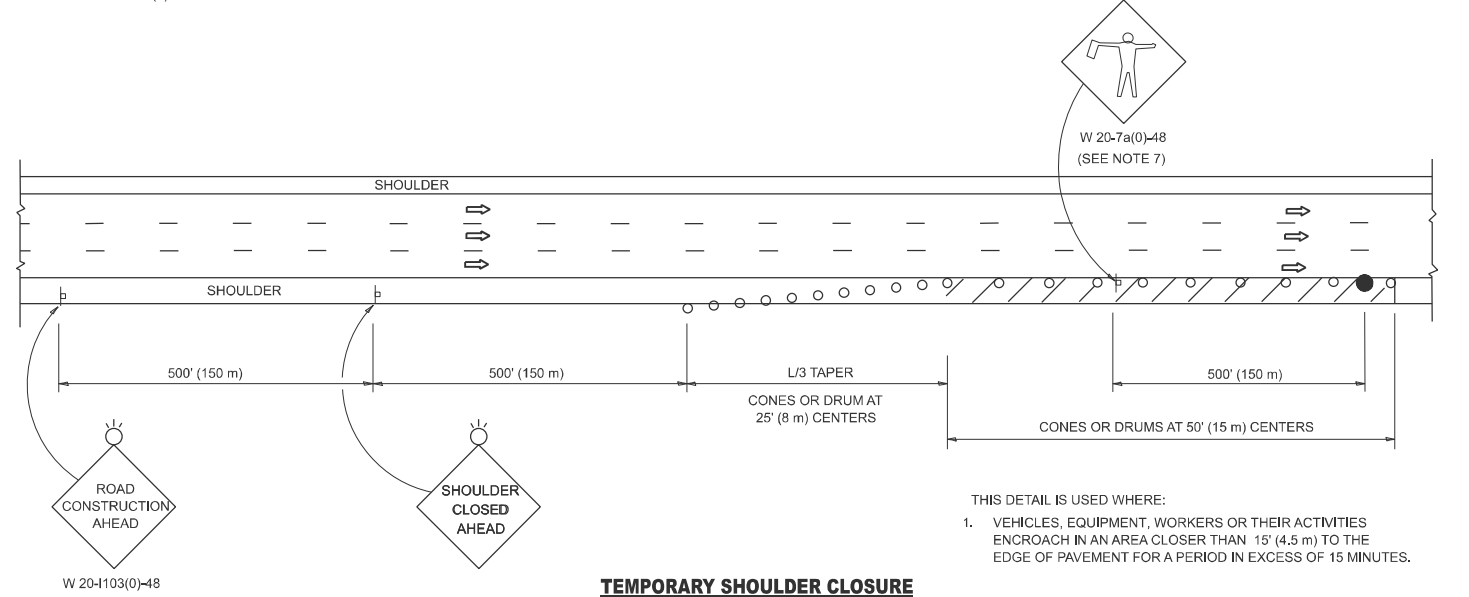
SPEED LIMIT	FORMULAS	
	METRIC	ENGLISH
45 mph (80 km/h) OR GREATER:	$L=0.65(W)(S)$	$L=(W)(S)$

W = WIDTH OF OFFSET IN FEET (METERS)  
S = NORMAL POSTED SPEED MPH (KM/H)
- TYPE II BARRICADES OR DRUMS ARE REQUIRED FOR ALL NIGHTTIME CLOSURES. TYPE II BARRICADES OR DRUMS WITH MONODIRECTIONAL STEADY BURN LIGHTS ARE REQUIRED FOR DELINEATING OBSTACLES, EXCAVATIONS, OR HAZARDS EXCEEDING 100 FT (30m) IN LENGTH AT NIGHT.
- ALL SIGNS SHALL BE POST MOUNTED IF THE CLOSURE TIME EXCEEDS FOUR DAYS.
- FLASHING LIGHTS SHALL BE USED DURING THE HOURS OF DARKNESS AND SHALL BE INSTALLED ABOVE THE FIRST TWO SETS OF SIGNS.

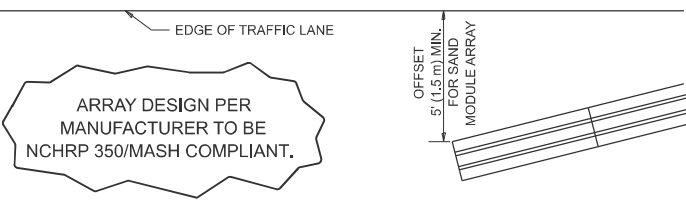
SHOULDER CLOSURE DETAILS



PERMANENT SHOULDER CLOSURE



TEMPORARY SHOULDER CLOSURE



DETAIL "A"  
IMPACT ATTENUATOR, TEMPORARY  
(SEE NOTE 5)

- THE IMPACT ATTENUATOR, TEMPORARY IS NOT REQUIRED WHEN THE TEMPORARY CONCRETE BARRIER WALL IS PROTECTED BY OR IS TIED INTO THE EXISTING GUARDRAIL. IF OFFSET IS LESS THAN 5 FEET USE NARROW USE TYPE DEVICE TO MEET NCHRP350/MASH.
- AUTHORIZATION FROM THE DISTRICT'S BUREAU OF TRAFFIC IS REQUIRED FOR ALL FREEWAY CLOSURES.
- THE FLAGGER AND FLAGGER SIGN ARE REQUIRED AT THE ABOVE WORK SITES WHEN:
  - FOUR OR MORE WORK VEHICLES ENTER THE TRAFFIC LANES IN A ONE HOUR PERIOD.
  - THE WORK ACTIVITY REQUIRES FREQUENT ENCR OACHMENT INTO THE LANE OPEN TO TRAFFIC.THE FLAGGER SHALL BE STATIONED APPROXIMATELY 100' (30 m) TO 200' (60 m) IN ADVANCE OF THE WORKERS.
- 12' MIN. WIDTH TANGENT SECTION  
16' MIN. WIDTH CURVE SECTION.
- TEMPORARY SHOULDER AND NON-SYSTEM INTERCHANGE PARTIAL RAMP CLOSURES ARE ALLOWED WEEKDAYS BETWEEN 9:00 A.M. AND 3:00 P.M. AND BETWEEN 7:00 P.M. AND 5:00 A.M. OR AS APPROVED BY THE EXPRESSWAY TRAFFIC OPERATIONS ENGINEER. PERMANENT SHOULDER AND PARTIAL RAMP CLOSURES WILL ONLY BE PERMITTED IF CALLED FOR IN THE PLANS OR AS APPROVED BY THE EXPRESSWAY OPERATIONS ENGINEER.

ALL DIMENSIONS ARE IN INCHES (MILLIMETERS) UNLESS OTHERWISE SHOWN.

STATE OF ILLINOIS  
DEPARTMENT OF TRANSPORTATION

TRAFFIC CONTROL DETAILS FOR FREEWAY  
SHOULDER CLOSURES AND PARTIAL RAMP CLOSURES

SCALE: NONE SHEET 1 OF 1 SHEETS STA. TO STA.

F.A.I RTE.	SECTION	COUNTY	TOTAL SHEETS	SHEET NO.
55	2025-2028-LR	VARIOUS	6	6
TC-17		CONTRACT NO. 80B86		
ILLINOIS		FED. AID PROJECT		

COOK, DUPAGE & WILL