

STATE OF ILLINOIS
DEPARTMENT OF TRANSPORTATION

F.A.I. RTE.	SECTION	COUNTY	TOTAL SHEETS	SHEET NO.
*	2025-2029-LR	COOK, DUPAGE	6	1
		ILLINOIS	CONTRACT NO. 80B85	

*290 / ILL 53

D-91-038-26

FOR INDEX OF SHEETS, SEE SHEET NO. 2

PROPOSED
HIGHWAY PLANS

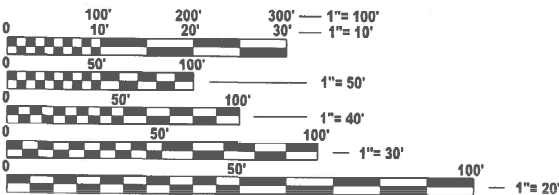
FAI ROUTE (EISENHOWER, I-290 EXTENSION, I-290,
ARMY TRAIL EXTENSION)

LAKE-COOK ROAD TO WELLS STREET
SECTION 2025-2029-LR
EXPRESSWAY HIGHWAY CLEANING (LITTER/DEBRIS REMOVAL)
COOK, DUPAGE COUNTIES

C-91-044-26



LOCATION MAP
SEE INDEX OF SHEETS



FULL SIZE PLANS HAVE BEEN PREPARED USING STANDARD
ENGINEERING SCALES. REDUCED SIZED PLANS WILL NOT
CONFORM TO STANDARD SCALES. IN MAKING MEASUREMENTS
ON REDUCED PLANS, THE ABOVE SCALES MAY BE USED.

J.U.L.I.E.
JOINT UTILITY LOCATION INFORMATION FOR EXCAVATION
1-800-892-0123
OR 811

PROJECT ENGINEER: OSCAR OLIVEROS (847) 705-4548
PROJECT MANAGER: JACEK EJMONT (847) 705-4641

CONTRACT NO. 80B85

GROSS LENGTH = 77,088 FT. = 14.6 MILE
NET LENGTH = 77,088 FT. = 14.6 MILE

STATE OF ILLINOIS
DEPARTMENT OF TRANSPORTATION
SUBMITTED Oct 20th 2025
[Signature] REGIONAL ENGINEER
December 5th 2025
[Signature] ENGINEER OF DESIGN AND ENVIRONMENT
December 5th 2025
[Signature] DIRECTOR OF HIGHWAYS PROJECT IMPLEMENTATION

PRINTED BY THE AUTHORITY
OF THE STATE OF ILLINOIS

INDEX OF SHEETS

STATE STANDARDS

SHEET NO.

DESCRIPTION

STANDARD NO.

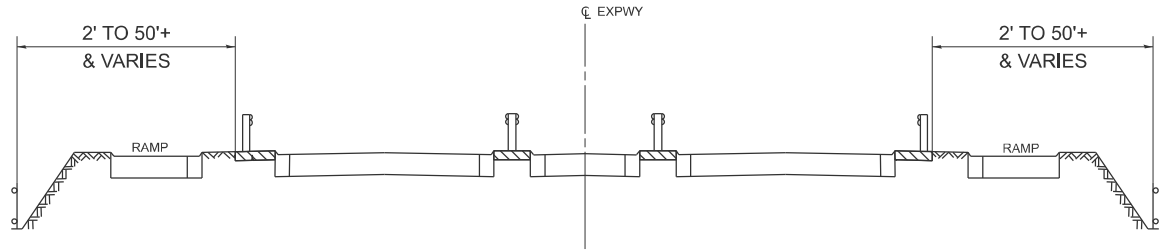
DESCRIPTION

1	TITLE SHEET	701106-02	OFF-ROAD OPERATION MULTILANE, MORE THAN 15' AWAY
2	INDEX OF SHEETS, STATE STANDARDS	701426-09	LANE CLOSURE, MULTILANE, INTERMITTENT OR MOVING OPER., FOR SPEEDS ≥ 45 MPH
3	GENERAL NOTES, SUMMARY OF QUANTITIES, & TYPICAL EXPRESSWAY CROSS-SECTIONS	701901-11	TRAFFIC CONTROL DEVICES
4	EXPRESSWAY CLEANING MAP: I-290 & I-290 EXTENSION FROM WELLS ST TO IL-83		
5	EXPRESSWAY CLEANING MAP: I-290 EXTENSION & ILL 53 FROM IL-83 TO LAKE COOK ROAD		
6	TRAFFIC CONTROL DETAILS FOR FREEWAY SHOULDER CLOSURES AND PARTIAL RAMP CLOSURES (TC-17)		

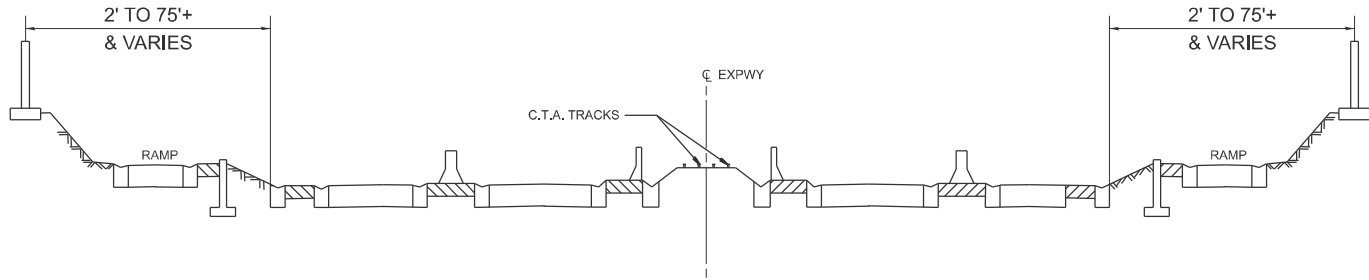
MODEL: gennotes-index [Sheet]
FILE NAME: c:\p\work\pwt\thanh.vo@illinois.gov\1168003\103826-sh-gennote.dgn

	USER NAME = thanh.vo	DESIGNED -	REVISED -	STATE OF ILLINOIS DEPARTMENT OF TRANSPORTATION	INDEX OF SHEETS AND STATE STANDARDS			F.A.I RTE.	SECTION	COUNTY	TOTAL SHEETS	SHEET NO.
		DRAWN -	REVISED -					*	2025-2029-LR	COOK, DUPAGE	6	2
		CHECKED -	REVISED -					CONTRACT NO. 80B85				
	PLOT DATE = 10/3/2025	DATE -	REVISED -		SCALE:	SHEET 1	OF 1	SHEETS	STA.	TO STA.	ILLINOIS FED. AID PROJECT	

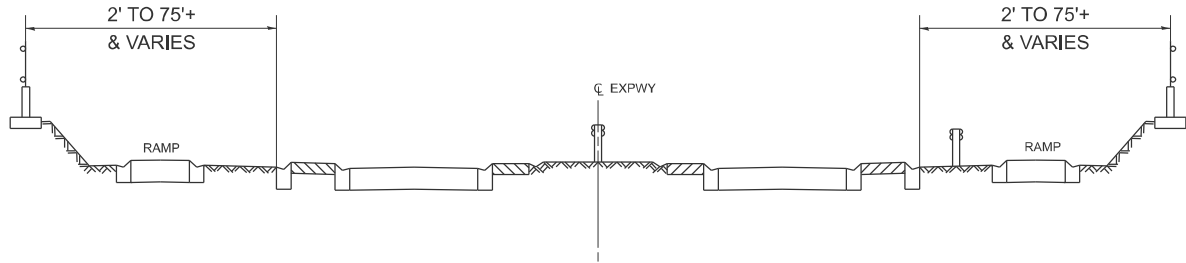
MODEL: typicals [Sheet]
FILE NAME: c:\p\work\pwt\thanh.vo\illinois.gov\1168003\10326-sh-typical.dgn



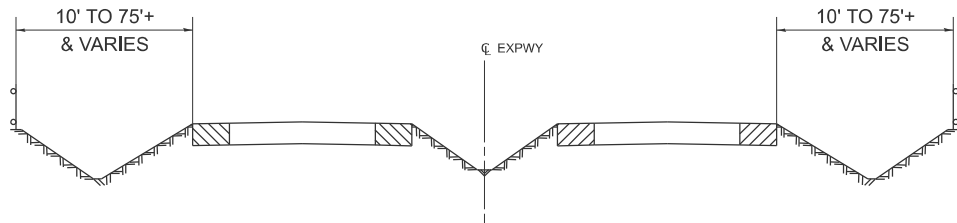
TYPICAL EXPRESSWAY CROSS-SECTION NO. 1



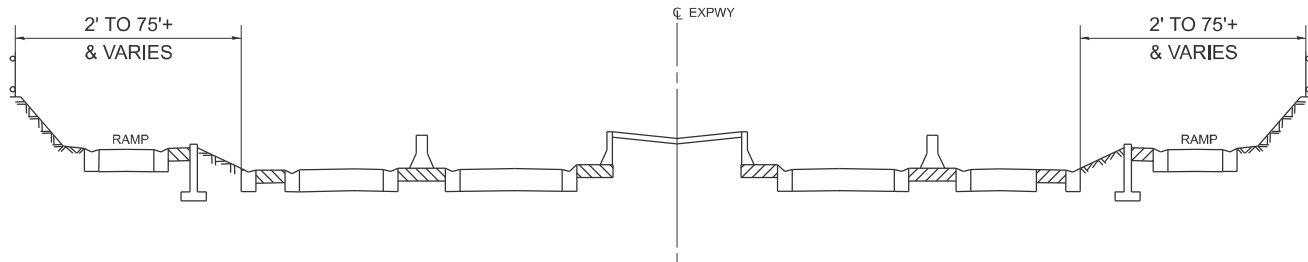
TYPICAL EXPRESSWAY CROSS-SECTION NO. 2



TYPICAL EXPRESSWAY CROSS-SECTION NO. 3



TYPICAL EXPRESSWAY CROSS-SECTION NO. 4



TYPICAL EXPRESSWAY CROSS-SECTION NO. 5

NOTES:

- SCHEDULE MAY VARY AS DIRECTED BY THE ENGINEER.
- NO DAILY CONTRACTOR WORK REQUESTS/SCHEDULING SHALL BE AUTHORIZED OR APPROVED TO START WHEN IT IS DETERMINED BY THE ENGINEER THAT WEATHER CONDITIONS WILL BE UNFAVORABLE. APPROVAL OF DAILY CONTRACTOR WORK SCHEDULE REQUEST SHALL BE SOLELY DETERMINED BY THE ENGINEER.
- ALL SHOULDER CLOSURES SHALL BE IMMEDIATELY REMOVED DURING ALL ADVERSE WEATHER CONDITIONS WITHOUT EXCEPTION, INCLUDING BUT NOT LIMITED TO RAIN, WET ROAD SURFACE (SPRAY FROM TIRES), MIST, DRIZZLE, SLEET, SNOW, FOG AND ANY OTHER CIRCUMSTANCE DETERMINED UNSAFE BY THE ENGINEER. THE CONTRACTOR SHALL IMPLEMENT THIS CONTRACT REQUIREMENT IMMEDIATELY WITHOUT WAITING FOR DEPARTMENT'S INSTRUCTION.
- NO WORK WILL BE ALLOWED ON THE FOLLOWING LEGAL HOLIDAYS UNLESS IT IS CONSIDERED AN EMERGENCY, IMMEDIATE HAZARD OR ANY WORK AS DESIGNATED BY THE DEPARTMENT THAT REQUIRES FIRST PRIORITY CORRECTIVE ACTION:

EASTER HOLIDAY
MEMORIAL DAY HOLIDAY
INDEPENDENCE DAY HOLIDAY
LABOR DAY HOLIDAY
THANKSGIVING HOLIDAY
CHRISTMAS HOLIDAY
NEW YEARS HOLIDAY
- A REQUIRED MINIMUM OF 3 WORKING CREWS WITH A MINIMUM LABOR FORCE CONSISTING OF 5 PERSONNEL PER EACH OF THE 3 WORKING CREWS SHALL BE AVAILABLE AND PROVIDED FOR THIS WORK.

SUMMARY OF QUANTITIES

			COOK		DUPAGE
			URBAN	100 % STATE 0044	100 % STATE 0044
CODE NO.	ITEM	UNIT	TOTAL QUANTITIES	EXPRESSWAY	EXPRESSWAY
X0326643	LITTER PICKING	MILE	1646.4	1494.9	151.5

1.

USER NAME = thanh.vo	DESIGNED -	REVISED -
	DRAWN -	REVISED -
	CHECKED -	REVISED -
PLOT DATE = 10/16/2025	DATE -	REVISED -

STATE OF ILLINOIS
DEPARTMENT OF TRANSPORTATION

**GENERAL NOTES, SUMMARY OF QUANTITIES, &
TYPICAL EXPRESSWAY CROSS-SECTIONS**

SCALE: NONE SHEET 1 OF 1 SHEETS STA. 0+00.00 TO STA. 0+00.00

F.A.I RTE.	SECTION	COUNTY	TOTAL SHEETS	SHEET NO.
*	2025-2029-LR	COOK, DUPAGE	6	3
CONTRACT NO. 80B85				
ILLINOIS FED. AID PROJECT				

This is a detailed street map of the Chicago metropolitan area, specifically showing the boundaries of DuPage and Cook counties. The map is oriented with North at the top, indicated by a north arrow in the upper right corner. The names of the counties, 'DUPAGE' and 'COOK', are prominently displayed in large, bold, black letters across the center of the map. A thick black line traces a route through the area, starting from the northwest, passing through the city of Chicago, and ending near Lake Michigan. The map shows a dense network of streets, including major highways like I-55, I-54, and I-90. Various streets are labeled with their names, and some are marked with 'TOLL' signs. The map also includes labels for various landmarks, such as 'LAKE MICHIGAN' and 'CHICAGO'. The overall style is that of a traditional street map, with clear lines and legible text.

MODEL: MAP [Sheet]

USER NAME = thanh.vo	DESIGNED -	REVISED -
	DRAWN -	REVISED -
	CHECKED -	REVISED -
PLOT DATE = 10/3/2025	DATE -	REVISED -

STATE OF ILLINOIS
DEPARTMENT OF TRANSPORTATION

EXPRESSWAY CLEANING MAP

I-290 & I-290 EXTENSION FROM WELLS ST TO IL-83

F.A.I RTE.	SECTION	COUNTY	TOTAL SHEETS	SHEET NO.
*	2025-2029-LR	COOK, DUPAGE	6	4
		CONTRACT NO. 80B85		
ILLINOIS		FED. AID PROJECT		



LAKE

DUPAGE

DISTRICT NO. 1

**STATE HIGHWAYS & EXPRESSWAYS
TO BE CLEANED**

== FUTURE HIGHWAYS

—— VARIOUS AGENCIES HIGHWAYS

- CONTINUED ON SHEET 4

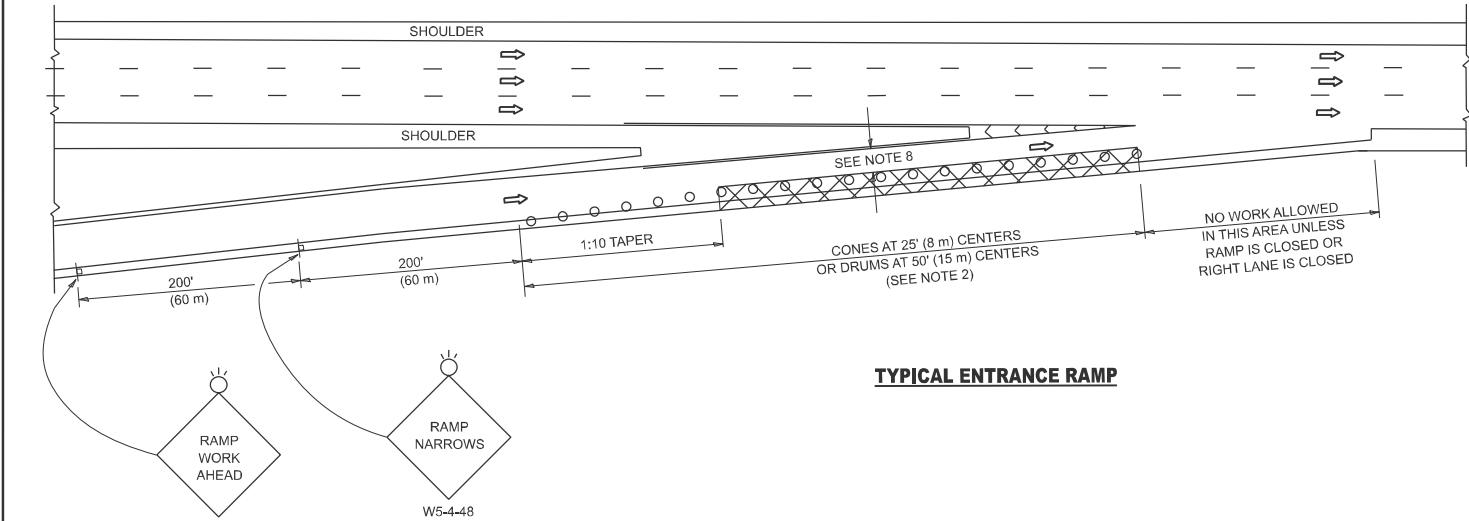
USER NAME = thanh.vo	DESIGNED -	REVISED -
	DRAWN -	REVISED -
	CHECKED -	REVISED -
PLOT DATE = 10/3/2025	DATE -	REVISED -

EXPRESSWAY CLEANING MAP

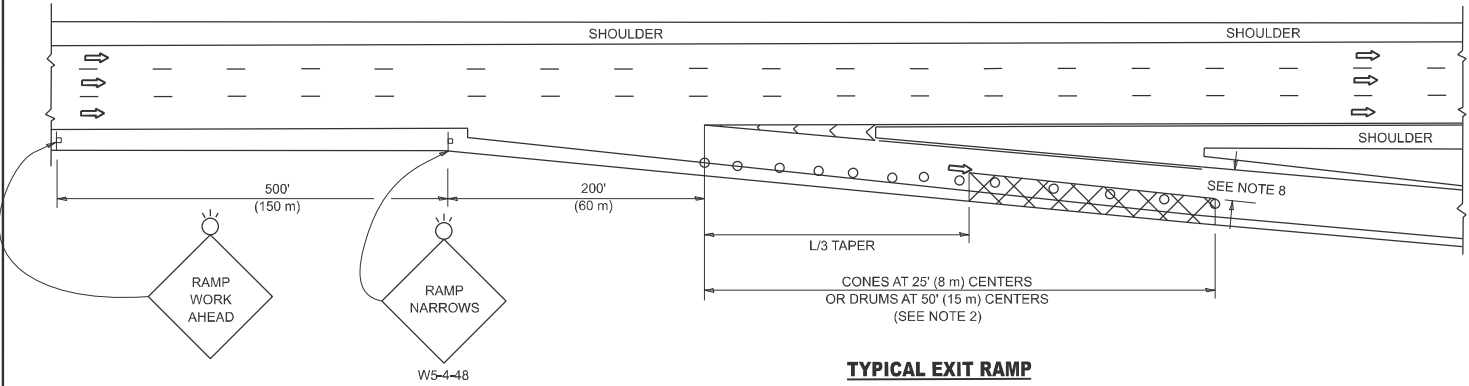
I-290 EXTENSION & ILL 53 FROM IL-83 TO LAKE COOK ROAD

*290 / ILL 53

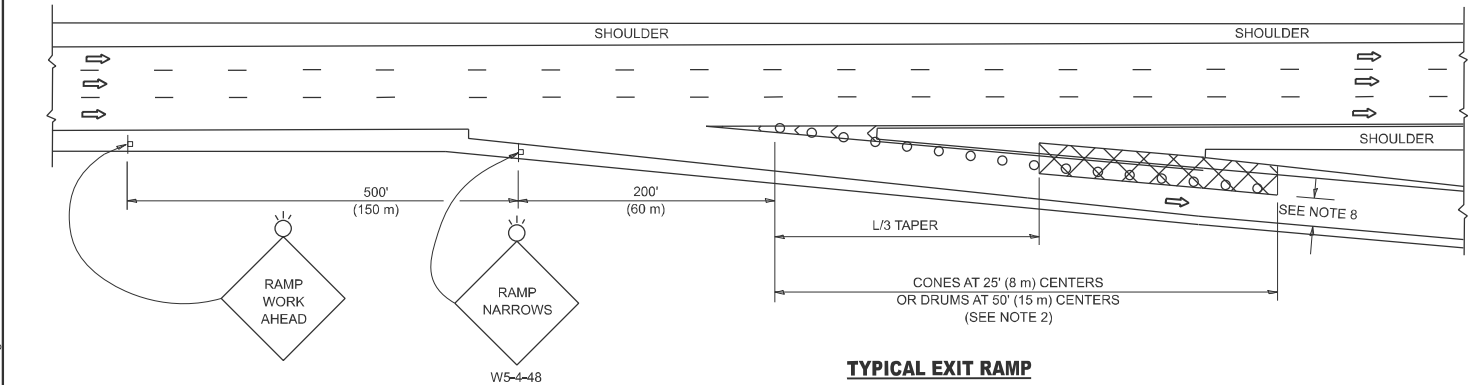
PARTIAL RAMP CLOSURE DETAILS



TYPICAL ENTRANCE RAMP



TYPICAL EXIT RAMP



TYPICAL EXIT RAMP

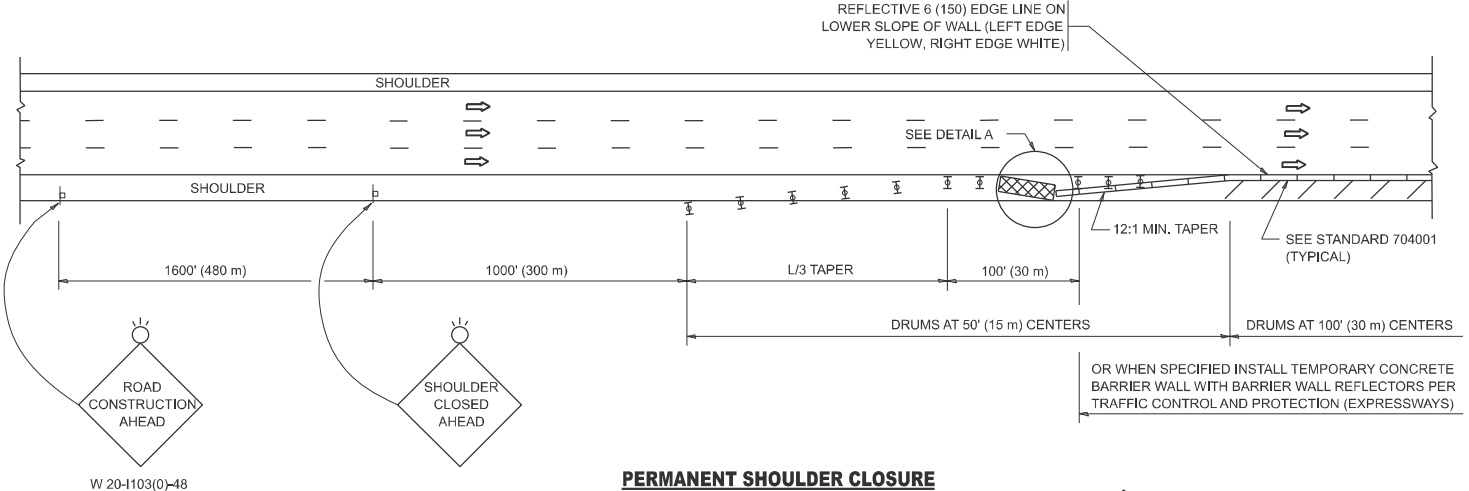
SYMBOLS

- ACTIVE WORK AREA
- SIGN ON PORTABLE OR PERMANENT SUPPORT
- FLAGGER WITH CONTROL SIGN
- TYPE II BARRICADE OR DRUM
- CONE, DRUM OR BARRICADE
- IMPACT ATTENUATOR OF TYPE AND TEST LEVEL SPECIFIED

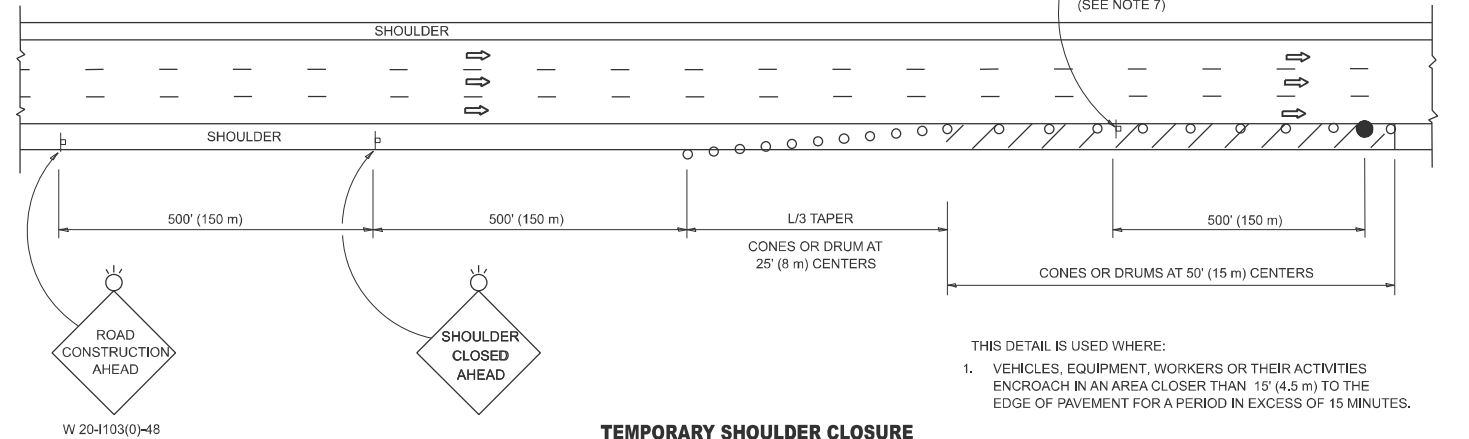
GENERAL NOTES:

- THE "L" DISTANCE EQUALS:
SPEED LIMIT
45 mph (80 km/h)
OR GREATER:
W = WIDTH OF OFFSET IN FEET (METERS)
S = NORMAL POSTED SPEED MPH (KM/H)
FORMULAS
METRIC ENGLISH
L=0.65(W)(S) L=(W)(S)
- TYPE II BARRICADES OR DRUMS ARE REQUIRED FOR ALL NIGHTTIME CLOSURES. TYPE II BARRICADES OR DRUMS WITH MONODIRECTIONAL STEADY BURN LIGHTS ARE REQUIRED FOR DELINEATING OBSTACLES, EXCAVATIONS, OR HAZARDS EXCEEDING 100 FT (30m) IN LENGTH AT NIGHT.
- ALL SIGNS SHALL BE POST MOUNTED IF THE CLOSURE TIME EXCEEDS FOUR DAYS.
- FLASHING LIGHTS SHALL BE USED DURING THE HOURS OF DARKNESS AND SHALL BE INSTALLED ABOVE THE FIRST TWO SETS OF SIGNS.

SHOULDER CLOSURE DETAILS

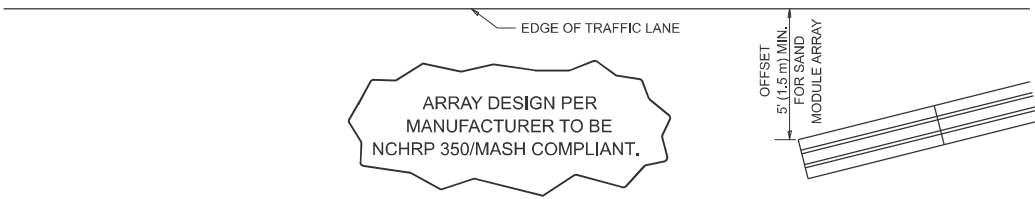


PERMANENT SHOULDER CLOSURE



TEMPORARY SHOULDER CLOSURE

DETAIL "A"
IMPACT ATTENUATOR, TEMPORARY
(SEE NOTE 5)



MODEL: TC17 (Sheet)
FILE NAME: c:\p\work\wv\thanh.vo\illinois.gov\1168003\103026-shd-Dist\Std.sldgn

STATE OF ILLINOIS
DEPARTMENT OF TRANSPORTATION

TRAFFIC CONTROL DETAILS FOR FREEWAY
SHOULDER CLOSURES AND PARTIAL RAMP CLOSURES

F.A.I RTE.	SECTION	COUNTY	TOTAL SHEETS	SHEET NO.
*	2025-2029-LR	COOK, DUPAGE	6	6
TC-17		CONTRACT NO. 80B85		
		ILLINOIS FED. AID PROJECT		