

STATE OF ILLINOIS
DEPARTMENT OF TRANSPORTATION

| F.A.I. RTE. | SECTION | COUNTY | TOTAL SHEETS | SHEET NO. |
|----------------|----------------------|---------|--------------------|--------------|
| 57 | D9 Weed Spray 2026-1 | Various | 11 | 1 |
| ILLINOIS | | | CONTRACT NO. 78C00 | |

FOR INDEX OF SHEETS, SEE SHEET NO. 3

PROPOSED
HIGHWAY PLANS

FAI ROUTE 57 (I-57)
SECTION D9 WEED SPRAY 2026-1

WEED SPRAYING
VARIOUS COUNTIES

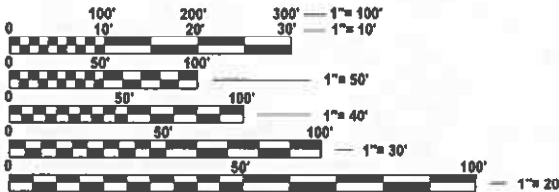
C-99-035-26

LOCATION #4 I-57
MP 52 (WESTMINSTER) TO MP 62.1
(WILLIAMSON/FRANKLIN COUNTY LINE)

LOCATION #5 I-57
FROM MP 62.1 TO MP 75

LOCATION #3 I-57
MP 22 (UNION/PULASKI COUNTY LINE)
NORTH TO EXIT 30 WITH INFIELDS

LOCATION #2 I-57
MP 4.3 NORTH TO MP 22
(UNION/PULASKI COUNTY LINE)

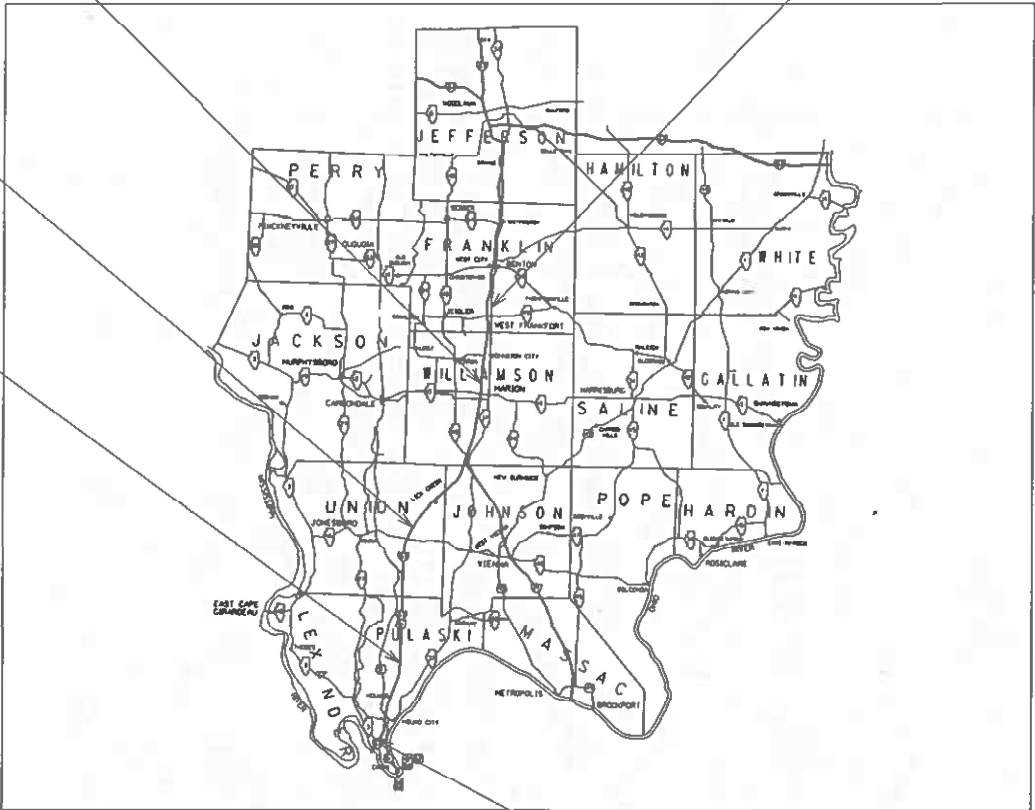


FULL SIZE PLANS HAVE BEEN PREPARED USING STANDARD
ENGINEERING SCALES. REDUCED SIZED PLANS WILL NOT
CONFORM TO STANDARD SCALES. IN MAKING MEASUREMENTS
ON REDUCED PLANS, THE ABOVE SCALES MAY BE USED.

J.U.L.I.E.
JOINT UTILITY LOCATION INFORMATION FOR EXCAVATION
1-800-892-0123
OR 811

PROJECT ENGINEER: VALERIE ROLLA
PROJECT DESIGNER: MELISSA COLE

CONTRACT NO. 78C00



LOCATION #1 I-57
MP 1.0 NORTH TO MP 4.3
(ALEXANDER/PULASKI COUNTY LINE)

D-99-013-26



STATE OF ILLINOIS
DEPARTMENT OF TRANSPORTATION

SUBMITTED Sept 24 2025
Aria S. Remington
REGIONAL ENGINEER

December 5, 2025
Scott A. Etkin
ENGINEER OF DESIGN AND ENVIRONMENT

December 5, 2025
John P. Barry
DIRECTOR OF HIGHWAYS PROJECT IMPLEMENTATION

PRINTED BY THE AUTHORITY
OF THE STATE OF ILLINOIS

MODEL: SIG (Sheet)
FILE NAME: c:\pwworking\mcd\mcd1161611\097000 Cover_Sig.dgn

| | | | | | |
|-----------|----------------|----------|---|---------|---|
| USER NAME | = melissa.cole | DESIGNED | - | REVISED | - |
| | | DRAWN | - | REVISED | - |
| | | CHECKED | - | REVISED | - |
| PLOT DATE | = 8/18/2025 | DATE | - | REVISED | - |

STATE OF ILLINOIS
DEPARTMENT OF TRANSPORTATION

SIGNATURE SHEET

SCALE: SHEET 2 OF 2 SHEETS STA. TO STA.

| F.A.I RTE. | SECTION | COUNTY | TOTAL SHEETS | SHEET NO. |
|---------------------------|----------------------|---------|-----------------|--------------|
| 57 | D9 Weed Spray 2026-1 | Various | 11 | 2 |
| CONTRACT NO. 78C00 | | | | |
| ILLINOIS FED. AID PROJECT | | | | |

Prepared By: 
DISTRICT STUDIES & PLANS ENGINEER

Examined By: 
DISTRICT LAND ACQUISITION ENGINEER

Examined By: 
DISTRICT PROGRAM DEVELOPMENT ENGINEER

Examined By: 
DISTRICT OPERATIONS ENGINEER

Examined By: 
DISTRICT PROJECT IMPLEMENTATION ENGINEER

Examined By: 
DISTRICT CONSTRUCTION ENGINEER

Examined By: 
DISTRICT MATERIALS ENGINEER

INDEX OF SHEETS

| SHEET NO | DESCRIPTION |
|----------|---------------------------------------|
| 1 | COVER SHEET |
| 2 | SIGNATURE SHEET |
| 3 | INDEX OF SHEETS & HIGHWAY STANDARDS |
| 4 | SUMMARY OF QUANTITIES |
| 5 | SCHEDULE OF QUANTITIES |
| 6 | SCHEDULE OF ROUTES AND SPRAY MIXTURES |
| 7 | ALEXANDER COUNTY LOCATION MAP |
| 8 | PULASKI COUNTY LOCATION MAP |
| 9 | UNION COUNTY LOCATION MAP |
| 10 | WILLIAMSON COUNTY LOCATION MAP |
| 11 | FRANKLIN COUNTY LOCATION MAP |

HIGHWAY STANDARDS

000001-09 STANDARD SYMBOLS ABBREVIATIONS & PATTERNS
001006 DECIMAL OF AN INCH AND OF A FOOT
701101-05_OFFRDOP-MULTILN-LESSTHAN15FTTOEOP
701106-02_OFFRDOP-MULTILN-MORETHAN15FTAWAY
701426-09_LNCLOSUREMULTILN-INTERMITTANTORMOVINGOP45MPHORMORE
701901-11_TRAFCNTRLDEVICES

MODEL: index [Sheet]
FILE NAME: c:\p\work\pwtol\cdemmd1161611D978C00-Sht.dgn

| | | | | | | | | | | | | |
|--|--------------------------|------------|-----------|---|--------------------------------|---------|-------------|--------------------|----------------------|---------------------------|-----------------|--------------|
| | USER NAME = melissa.cole | DESIGNED - | REVISED - | STATE OF ILLINOIS DEPARTMENT OF TRANSPORTATION | INDEX OF SHEETS & STANDARDS | | | F.A.I RTE. | SECTION | COUNTY | TOTAL SHEETS | SHEET NO. |
| | | DRAWN - | REVISED - | | | | | 57 | D9 Weed Spray 2026-1 | Various | 11 | 3 |
| | | CHECKED - | REVISED - | | | | | CONTRACT NO. 78C00 | | | | |
| | PLOT DATE = 9/23/2025 | DATE - | REVISED - | | SCALE: | SHEET 1 | OF 1 SHEETS | STA. | TO STA. | ILLINOIS FED. AID PROJECT | | |

SUMMARY OF QUANTITIES

| | |
|-----------|---------------|
| COUNTY: | VARIOUS |
| ROUTE: | FAI 57 (I-57) |
| FUNDING: | 100% STATE |
| LOCATION: | RURAL |
| | ROADWAY |
| | 0031 |

| CODE NUMBER | ITEM DESCRIPTION | UNIT | |
|-------------|----------------------|--------|-------|
| | | | |
| 67100100 | MOBILIZATION | L SUM | 1 |
| | | | |
| X0323584 | OUTRIDER | OUNCE | 2,201 |
| | | | |
| X0325681 | NON-IONIC SURFACTANT | GALLON | 183.5 |
| | | | |

MODEL: Quantities [Sheet]
FILE NAME: c:\p\work\p\work\code\mmd1161611\0978C00-Sht.dgn

SCHEDULE OF QUANTITIES

| LOCATION | MARKED ROUTE | COUNTY | ESTIMATED ACRES | SURFACTANT | OUTRIDER |
|----------------|--------------|------------|-----------------|------------|----------|
| | | | | GALLONS | OUNCES |
| 1 | FAI 57 NB | ALEXANDER | 48.5 | 6.1 | 73 |
| | FAI 57 SB | ALEXANDER | 48.5 | 6.1 | 73 |
| 2 | FAI 57 NB | PULASKI | 267.5 | 33.4 | 401.25 |
| | FAI 57 SB | PULASKI | 267.5 | 33.4 | 401.25 |
| 3 | FAI 57 NB | UNION | 150 | 18.75 | 225 |
| | FAI 57 SB | UNION | 150 | 18.75 | 225 |
| 4 | FAI 57 NB | WILLIAMSON | 162.5 | 20.3 | 243.75 |
| | FAI 57 SB | WILLIAMSON | 162.5 | 20.3 | 243.75 |
| 5 | FAI 57 NB | FRANKLIN | 105 | 13.2 | 157.5 |
| | FAI 57 SB | FRANKLIN | 105 | 13.2 | 157.5 |
| PROJECT TOTALS | | | | 183.5 | 2201 |

MODEL: Quantities-1 [Sheet]
FILE NAME: c:\paw_work\pawlot\cdem\mid161611\D978C00-Sht.dgn

SCHEDULE OF ROUTES

| LOCATION | COUNTY | MARKED ROUTE |
|----------|------------|--|
| 1 | ALEXANDER | INTERSTATE 57 FROM MP 1.0 TO MP 4.3 (ALEXANDER/PULASKI COUNTY LINE) |
| 2 | PULASKI | INTERSTATE 57 FROM MP 4.3 NORTH TO MP 22 (PULASKI/UNION COUNTY LINE) |
| 3 | UNION | INTERSTATE 57 FROM MP 22 (PULASKI/UNION COUNTY LINE) TO EXIT 30 WITH INFIELDS |
| 4 | WILLIAMSON | INTERSTATE 57 FROM MP 52 (WESTMINSTER) TO MP 62.1 (FRANKLIN/WILLIAMSON CO. LINE) |
| 5 | FRANKLIN | INTERSTATE 57 FROM MP 62.1 TO MP 75 |

ESTIMATE OF TOTAL
MATERIALS FOR SPRAY

| MATERIAL | QUANTITY |
|--------------------|----------------|
| HERBICIDE OUTRIDER | 2200.5 OUNCES |
| SURFACTANT | 183.4 GALLONS |
| CLEAN WATER | 73,350 GALLONS |

SPRAY MIXTURE

| OUTRIDER MIXTURE | |
|--------------------|-------------------------|
| OUTRIDER HERBICIDE | 1.5 OZ. OF PRODUCT/ACRE |
| SURFACTANT | 16.0 OZ OF PRODUCT/ACRE |
| CLEAN WATER | 50 GALLONS/ACRE |

MODEL: Quantities-2 [Sheet]
FILE NAME: c:\paw_work\pawdotcodemmd1161611D978C00-Sht.dgn

EAST CAPE
GIRARDEAU

THEBES

RIVER

— END LOCATION #1
I-57 AT MP 4.3
(ALEXANDER/PULASKI COUNTY LINE)

BEGIN LOCATION #1
I-57 AT MP 1

~~CAIRO~~

**LOCATION #1
ALEXANDER CO.**

| F.A.I RTE. | SECTION | COUNTY | TOTAL SHEETS | SHEET NO. |
|---------------|----------------------|--------------------|------------------|--------------|
| 57 | D9 Weed Spray 2026-1 | Various | 11 | 7 |
| | | CONTRACT NO. 78C00 | | |
| | | ILLINOIS | FED. AID PROJECT | |

STATE OF ILLINOIS
DEPARTMENT OF TRANSPORTATION

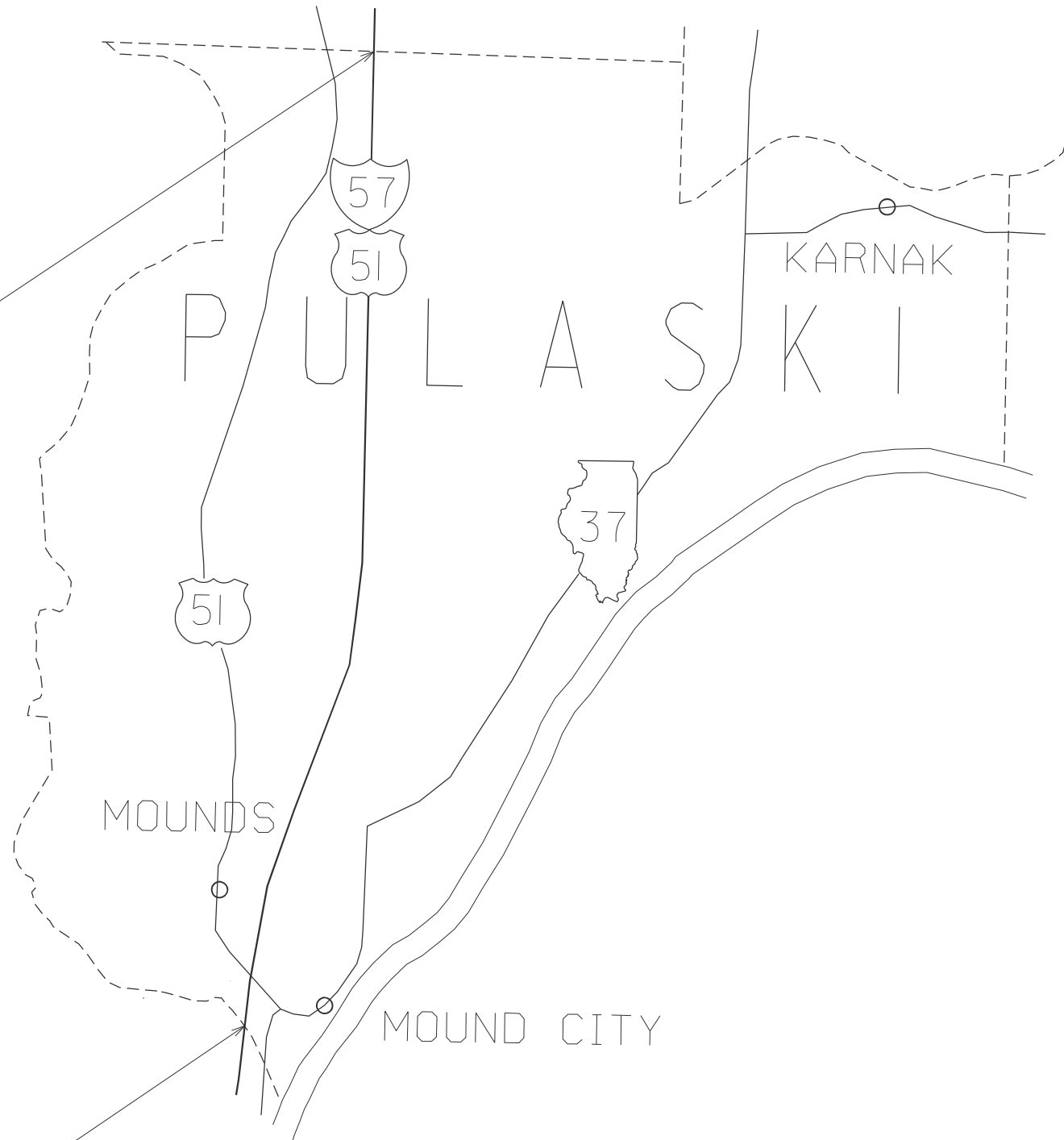
| | | | | | |
|--------|---------|------|--------|------|---------|
| SCALE: | SHEET 1 | OF 5 | SHEETS | STA. | TO STA. |
|--------|---------|------|--------|------|---------|

MODEL: LOC MAP [Sheet]
FILE NAME: c:\pw_ work\pwidot\cote\m\1161611\ID978C00_LOC\MAP.dgn

MODEL: LOC MAP-1 [Sheet]
FILE NAME: c:\pw_work\pwllocdemmd1161611D978C00_LOCMAP.dgn

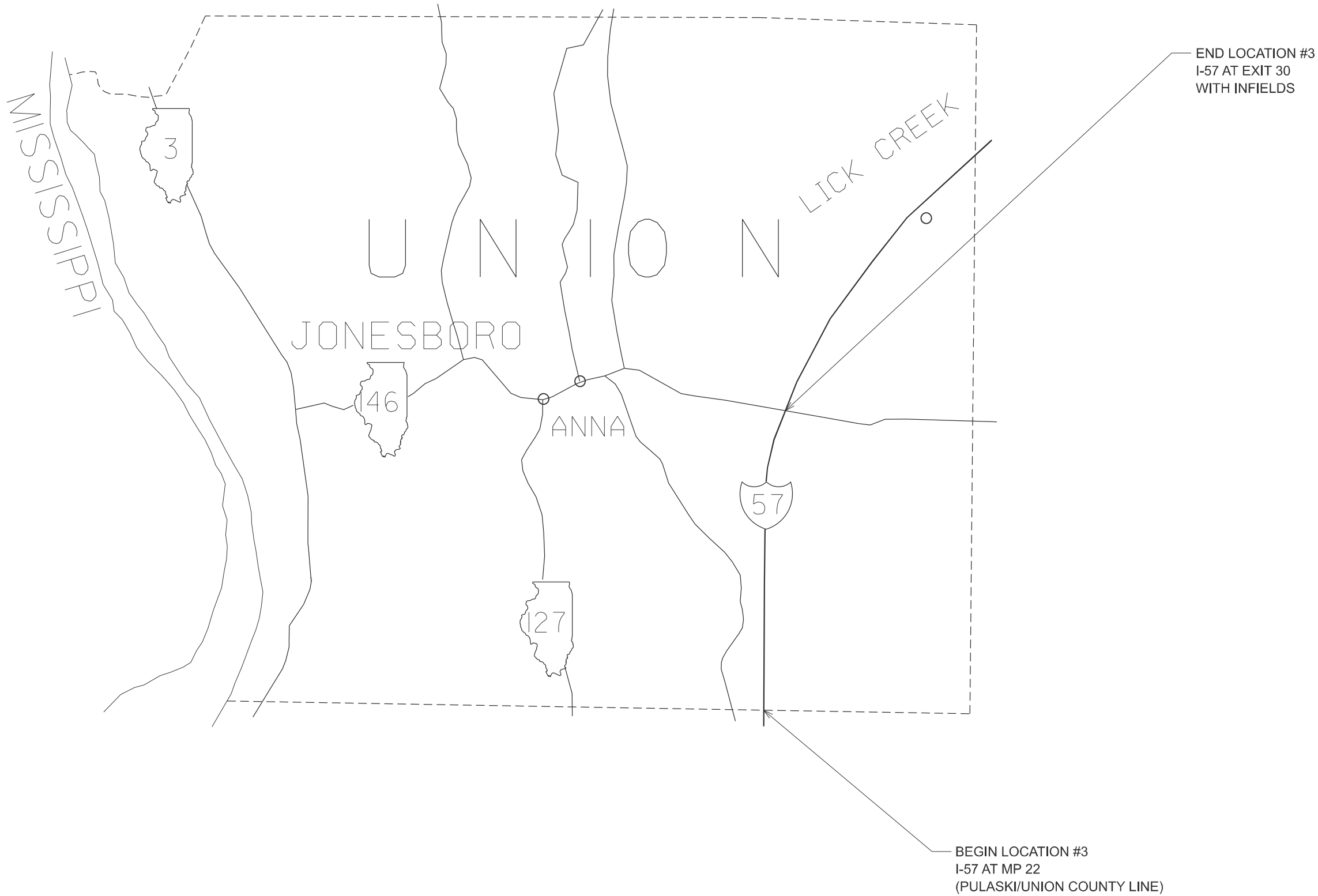
END LOCATION #2
I-57 AT MP 22
(UNION/PULASKI COUNTY LINE)

BEGIN LOCATION #2
I-57 AT MP 4.3



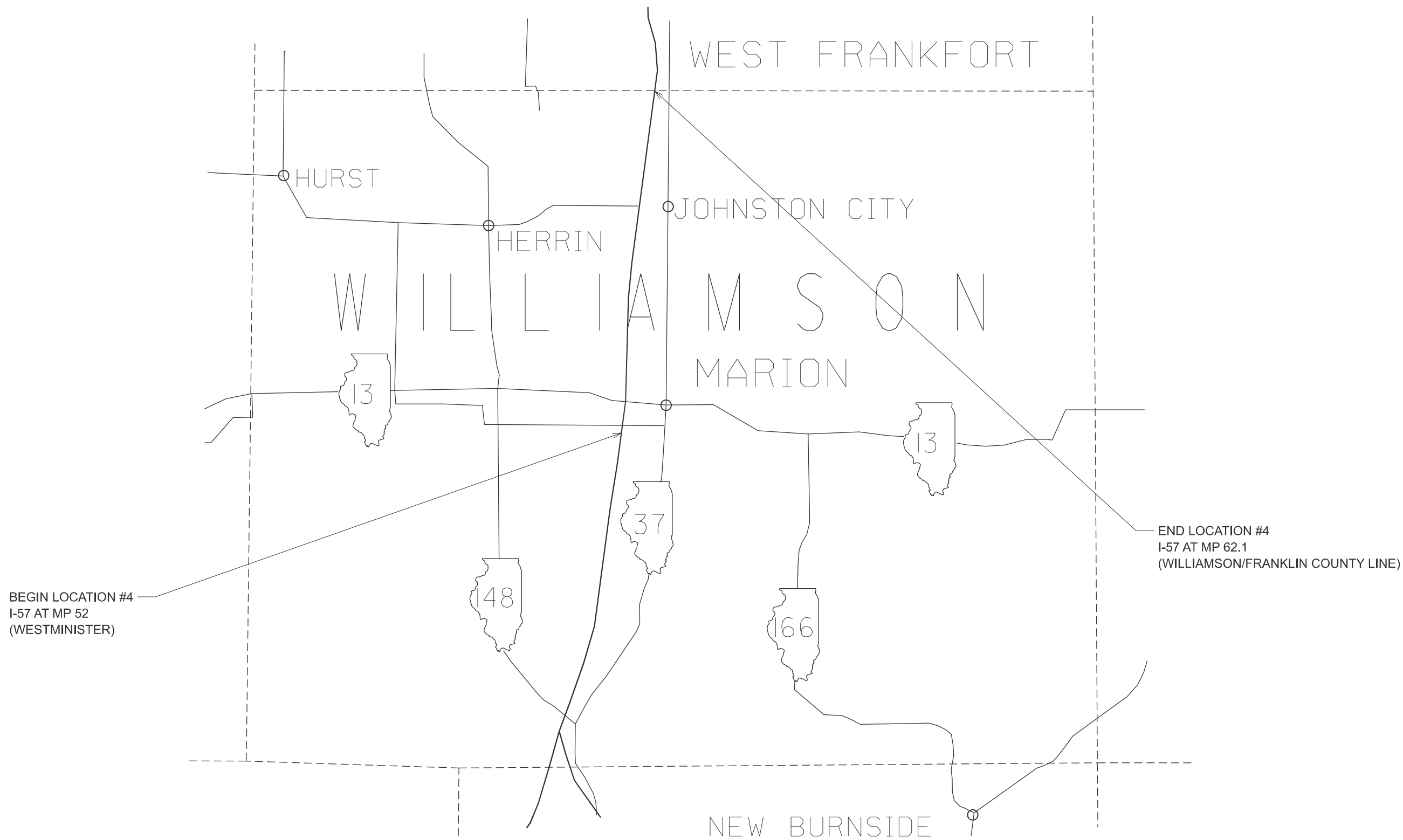
| | | | | | | | | | | | | |
|--|--------------------------|------------|-----------|---|-------------------------------|---------|------|--------------------|----------------------|---------|---------------------------|--------------|
| | USER NAME = melissa.cole | DESIGNED - | REVISED - | STATE OF ILLINOIS DEPARTMENT OF TRANSPORTATION | LOCATION #2 PULASKI COUNTY | | | F.A.I RTE. | SECTION | COUNTY | TOTAL SHEETS | SHEET NO. |
| | | DRAWN - | REVISED - | | | | | 57 | D9 Weed Spray 2026-1 | Various | 11 | 8 |
| | | CHECKED - | REVISED - | | | | | CONTRACT NO. 78C00 | | | | |
| | PLOT DATE = 9/22/2025 | DATE - | REVISED - | | SCALE: | SHEET 2 | OF 5 | SHEETS | STA. | TO STA. | ILLINOIS FED. AID PROJECT | |

MODEL: LOC MAP-2 [Sheet]
FILE NAME: c:\pw_work\pwlocodemmd1161611D978C00_LOCMAP.dgn



| | | | | | | | | | | | |
|--------|--------------------------|------------|-----------|---|-----------------------------|---------|---------------------------|----------------------|---------|-----------------|--------------|
| | USER NAME = melissa.cole | DESIGNED - | REVISED - | STATE OF ILLINOIS DEPARTMENT OF TRANSPORTATION | LOCATION #3 UNION COUNTY | | F.A.I RTE. | SECTION | COUNTY | TOTAL SHEETS | SHEET NO. |
| | | DRAWN - | REVISED - | | | | 57 | D9 Weed Spray 2026-1 | Various | 11 | 9 |
| | | CHECKED - | REVISED - | | | | CONTRACT NO. 78C00 | | | | |
| | PLOT DATE = 9/22/2025 | DATE - | REVISED - | | | | ILLINOIS FED. AID PROJECT | | | | |
| SCALE: | | SHEET 3 | OF 5 | SHEETS | STA. | TO STA. | | | | | |

MODEL: LOC MAP-3 [Sheet]
FILE NAME: c:\pw_work\pwlocodemmd1161611D978C00_LOCMAP.dgn



| | | | | | |
|-----------|-----------------|----------|---|---------|---|
| USER NAME | = mellissa.cole | DESIGNED | - | REVISED | - |
| | | DRAWN | - | REVISED | - |
| | | CHECKED | - | REVISED | - |
| PLOT DATE | = 9/22/2025 | DATE | - | REVISED | - |

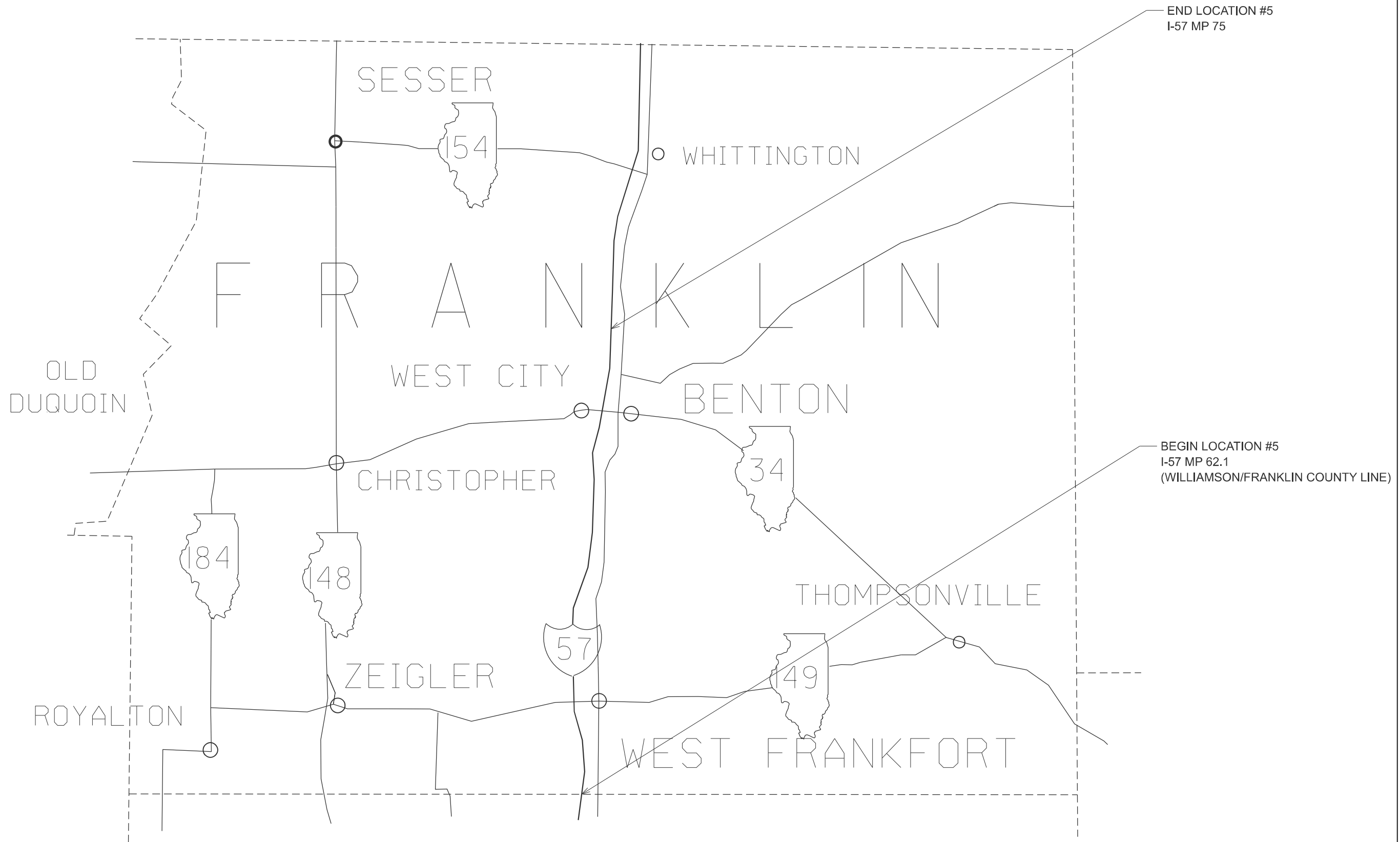
STATE OF ILLINOIS
DEPARTMENT OF TRANSPORTATION

LOCATION #4
WILLIAMSON CO.

SCALE: SHEET 4 OF 5 SHEETS STA. TO STA.

| F.A.I RTE. | SECTION | COUNTY | TOTAL SHEETS | SHEET NO. |
|---------------------------|----------------------|---------|-----------------|--------------|
| 57 | D9 Weed Spray 2026-1 | Various | 11 | 10 |
| CONTRACT NO. 78C00 | | | | |
| ILLINOIS FED. AID PROJECT | | | | |

MODEL: LOC MAP-4 [Sheet]
FILE NAME: c:\pw_work\pwloc\locdmm\161611\0978C00_LOCMAP.dgn



| | | | | | |
|-----------|----------------|----------|---|---------|---|
| USER NAME | = melissa.cole | DESIGNED | - | REVISED | - |
| | | DRAWN | - | REVISED | - |
| | | CHECKED | - | REVISED | - |
| PLOT DATE | = 9/22/2025 | DATE | - | REVISED | - |

STATE OF ILLINOIS
DEPARTMENT OF TRANSPORTATION

LOCATION #5
FRANKLIN COUNTY

SCALE: SHEET 5 OF 5 SHEETS STA. TO STA.

| F.A.I RTE. | SECTION | COUNTY | TOTAL SHEETS | SHEET NO. |
|---------------------------|----------------------|---------|-----------------|--------------|
| 57 | D9 Weed Spray 2026-1 | Various | 11 | 11 |
| CONTRACT NO. 78C00 | | | | |
| ILLINOIS FED. AID PROJECT | | | | |