

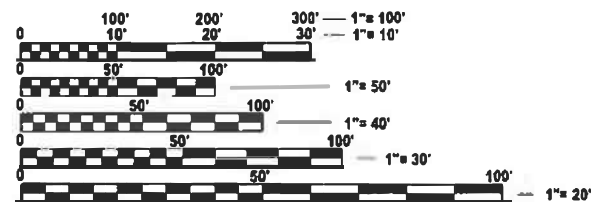
STATE OF ILLINOIS
DEPARTMENT OF TRANSPORTATION

PROPOSED HIGHWAY PLANS

TR 184 (HEATH ROAD / 1300N)
SECTION D7 PARKING LOT IMPROV 2025-1
PROJECT STATE
PARKING LOT IMPROVMENT
LAWRENCE COUNTY

C-97-001-25

FOR INDEX OF SHEETS, SEE SHEET NO. 2

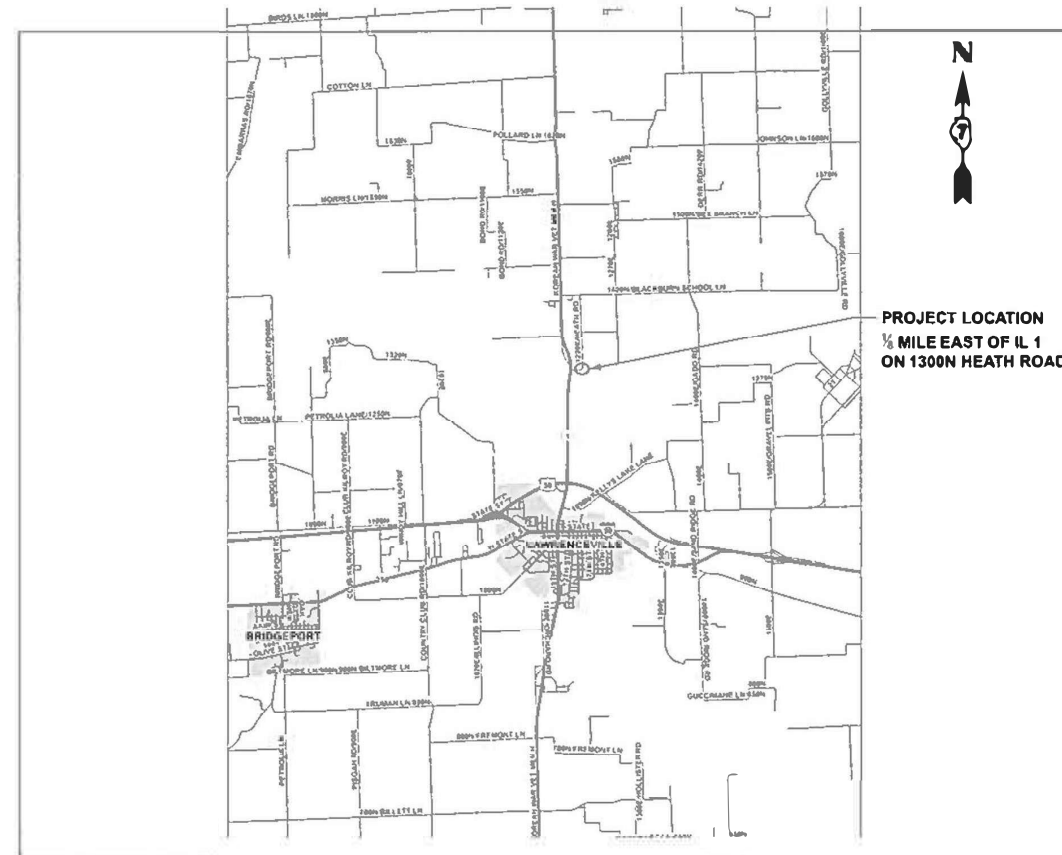


FULL SIZE PLANS HAVE BEEN PREPARED USING STANDARD
ENGINEERING SCALES. REDUCED SIZED PLANS WILL NOT
CONFORM TO STANDARD SCALES. IN MAKING MEASUREMENTS
ON REDUCED PLANS, THE ABOVE SCALES MAY BE USED.

J.U.L.I.E.
JOINT UTILITY LOCATION INFORMATION FOR EXCAVATION
1-800-892-0123
OR 811

PROJECT ENGINEER DEWAYNE SEACHRIST
PROJECT MANAGER ROBERT GREUEL

CONTRACT NO. 74D36



GROSS LENGTH = 200.0 FT. = 0.01 MILE
NET LENGTH = 200.0 FT. = 0.01 MILE

F.A.S. RTE	SECTION	COUNTY	TOTAL SHEETS	SHEET NO.
184	D7 PARKING LOT IMPROV 2025-1	LAWRENCE	9	1
		ILLINOIS	CONTRACT NO. 74D36	

D-97-001-25



LOCATION OF SECTION INDICATED THUS: ■

STATE OF ILLINOIS
DEPARTMENT OF TRANSPORTATION

SUBMITTED October 14 20 25
Tanese E. Prieto REGIONAL ENGINEER
December 5 20 25
Scott A. Etk ENGINEER OF DESIGN AND ENVIRONMENT
December 5 20 25
W. H. H. H. DIRECTOR OF HIGHWAYS PROJECT IMPLEMENTATION

PRINTED BY THE AUTHORITY
OF THE STATE OF ILLINOIS

MODEL: General Notes Sheet Index [Sheet]
FILE NAME: c:\p\work\pwtcd\illijad\1023665D774D38-sht-gennote.dgn

INDEX OF SHEETS

SHEET NO.	DESCRIPTION
1	COVER SHEET
2	INDEX OF SHEETS, HIGHWAY STANDARDS AND GENERAL NOTES
3	SUMMARY OF QUANTITIES
4	ENVIRONMENTAL PLAN
5	REMOVAL PLAN
6-8	CONCRETE APRON PLAN
9	PARKING LOT PAVEMENT MARKING PLAN

HIGHWAY STANDARDS

001001-02	AREAS OF REINFORCEMENT BARS
000001-09	STANDARD SYMBOLS, ABBREVIATIONS AND PATTERNS
001006	DECIMAL OF AN INCH AND OF A FOOT
420001-11	PAVEMENT JOINTS
701901-11	TRAFFIC CONTROL DEVICES
780001-05	TYPICAL PAVMENT MARKINGS

GENERAL NOTES

THIS PROJECT IS LOCATED AT THE LAWRENCEVILLE MAINTENANCE YARD AT 12969 HEATH ROAD LAWENCEVILLE, ILLINOIS.

THE WORK FOR THIS PARKING LOT REHABILITATION CONSISTS OF REMOVING THE CONCRETE APRON, OIL&CHIP AND REPLACING IT WITH FIBER REINFORCED CONCRETE.

THE MAINTENANCE YARD WILL REMAIN OPEN FOR BUSINESS AS USUAL AND THE CONTRACTOR SHALL COORDINATE WITH THE YARD TO KEEP INTERRUPTIONS WITH THE YARDS DAILY BUSINESS DOWN TO A MINIMUM.

	USER NAME = robert.greuel	DESIGNED -	REVISED -	STATE OF ILLINOIS DEPARTMENT OF TRANSPORTATION	INDEX OF SHEETS, HIGHWAY STANDARDS AND GENERAL NOTES			F.A.S RTE.	SECTION	COUNTY	TOTAL SHEETS	SHEET NO.
		DRAWN -	REVISED -					184	07 PARKING LOT IMPROV 2025-	LAWRENCE	9	2
		CHECKED -	REVISED -					CONTRACT NO. 74D36				
	PLOT DATE = 10/24/2025	DATE -	REVISED -		SCALE:	SHEET 1	OF 1	SHEETS	STA.	TO STA.	ILLINOIS FED. AID PROJECT	

MODEL - Summary of Quantities [Sheet]
FILE NAME - c:\pwworking\illinois\1023665D774D36-shl-SQO.dgn

SUMMARY OF QUANTITIES				CONSTR. CODE
				100% STATE
				SAFETY
				0021
CODE NO.	ITEM	UNIT	TOTAL QUANTITY	RURAL
31101000	SUBBASE GRANULAR MATERIAL, TYPE B	TON	278	278
44000200	DRIVEWAY PAVEMENT REMOVAL	SQ YD	1174	1174
* 66900200	NON-SPECIAL WASTE DISPOSAL	CU YD	375	375
* 66900530	SOIL DISPOSAL ANALYSIS	EACH	1	1
* 66901001	REGULATED SUBSTANCES PRE-CONSTRUCTION PLAN	L SUM	1	1
* 66901003	REGULATED SUBSTANCES FINAL CONSTRUCTION REPORT	L SUM	1	1
* 66901006	REGULATED SUBSTANCES MONITORING	CAL DA	5	5
67100100	MOBILIZATION	L SUM	1	1
* 72000100	SIGN PANEL - TYPE 1	SQ FT	2	2
78001100	PAINT PAVEMENT MARKING - LETTERS AND SYMBOLS	SQ FT	3.1	3.1
* 78001110	PAINT PAVEMENT MARKING - LINE 4"	FOOT	219.8	219.8
X0321309	CONCRETE PAD	SQ YD	1253	1253
X0696100	PARKING BLOCKS	EACH	5	5

* SPECIALTY ITEM

SUMMARY OF QUANTITIES				CONSTR. CODE
				100% STATE
				SAFETY
				0021
CODE NO.	ITEM	UNIT	TOTAL QUANTITY	RURAL
X1700114	CONCRETE PAD REMOVAL	SQ FT	694	694
Z0004002	BOLLARDS	EACH	6	6
Z0018905	DRILL AND GROUT BARS	EACH	105	105
Z0062002	SAW CUTTING, (FULL DEPTH)	FOOT	71	71

REV - MS

	USER NAME = robert.greuel	DESIGNED -	REVISED -	STATE OF ILLINOIS DEPARTMENT OF TRANSPORTATION	SUMMARY OF QUANTITIES				F.A.S RTE.	SECTION		COUNTY	TOTAL SHEETS	SHEET NO.
		DRAWN -	REVISED -						184	D7 PARKING LOT IMPROV 2025-	LAWRENCE	9	3	
		CHECKED -	REVISED -		CONTRACT NO. 74D36									
	PLOT DATE = 10/24/2025	DATE -	REVISED -		ILLINOIS FED. AID PROJECT									
					SCALE:	SHEET 1	OF 1	SHEETS	STA.	TO STA.				



Legend

669.05(a)(1)

Notes:

- 1. Additional detail and information regarding regulated substances management and disposal classifications can be found in the Standard Specifications for Road and Bridge Construction (SSRBC) Section 669.05.
- 2. This figure relies on color code depictions for soil management. Please contact the DESU or AE for assistance.



2412 W. Nebraska Ave.
Peoria, IL 61604
www.wsp.com

PROJECT NO: US0038458.7710 RMP 2016

SCALE:
AS NOTED

DATE:
03-03-25

DESIGNED BY:
TWD

DRAWN BY:
GAP

EXHIBIT 01
REGULATED SUBSTANCE MANAGEMENT AREA

Location: Lawrenceville Maintenance Yard Parking Lot
1300 N. Heath Rd.

Contract No. 74D36 BDE Sequence No. 26729
PESA: -- Route TR184

IDOT Job No. C-97-001-25

City/County Lawrenceville/Lawrence

STATE OF ILLINOIS
DEPARTMENT OF TRANSPORTATION

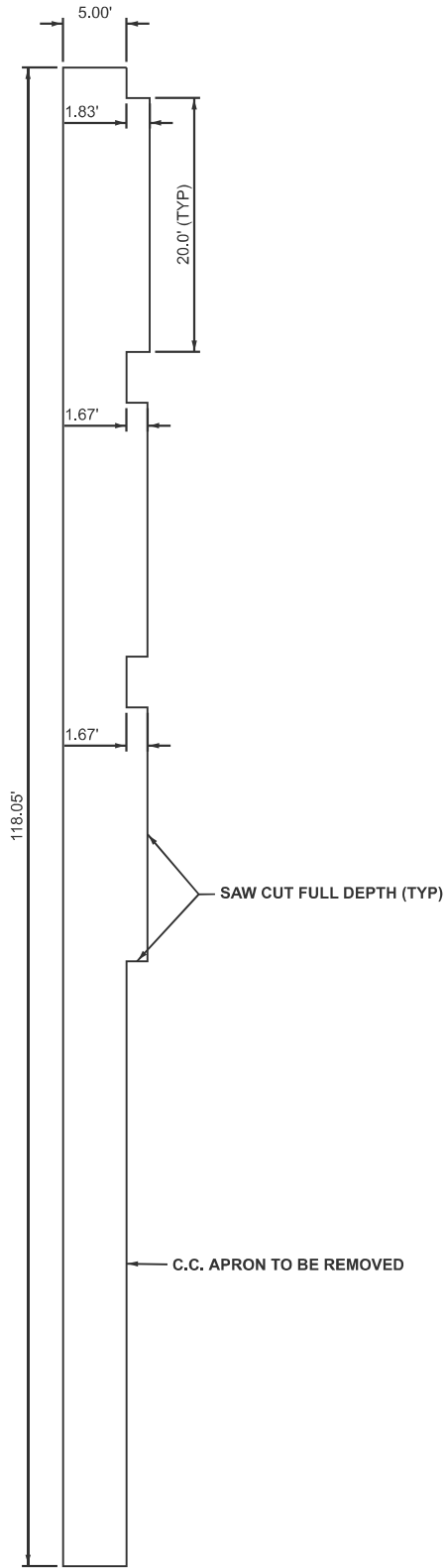
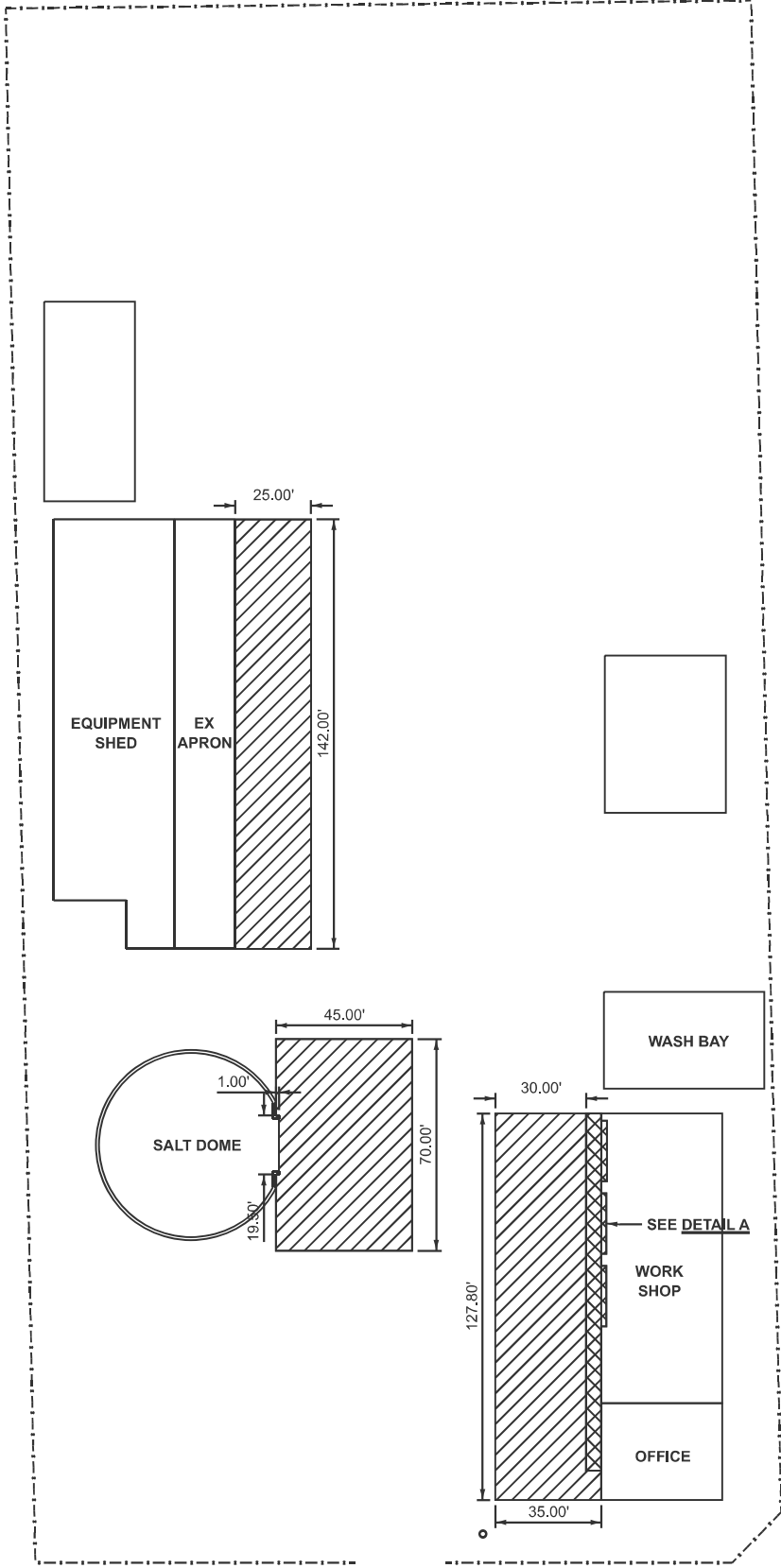
ENVIRONMENTAL PLAN

SCALE: SHEET 1 OF 6 SHEETS STA. TO STA.

F.A.S. RTE.	SECTION	COUNTY	TOTAL SHEETS	SHEET NO.
184	07 PARKING LOT IMPROV 2025-	LAWRENCE	9	4
CONTRACT NO. 74D36				

MODEL: Environmental [Sheet]
FILE NAME: c:\paw\work\chililead\1023665D\74D36-sht1enisc.dgn

MODEL: Removal plan sheet [Sheet]
FILE NAME: c:\paw\work\wisc\illil\jald1023665\D774D38-sht1-plan.dgn



LEGEND



CONCRETE PAD REMOVAL	LENGTH (FT)	WIDTH (FT)	SQ FT
SHOP AND OFFICE	118.05	5.00	590.25
DOOR 1	20.00	1.67	33.40
DOOR 2	20.00	1.67	33.40
DOOR 3	20.00	1.83	36.60
TOTAL			693.65

DRIVEWAY PAVEMENT REMOVAL CALCULATED BY OPEN ROADS	SQ FT	SQ YD
SHOP AND OFFICE	3882.75	431.42
SALT DOME	3130.50	347.83
EQUIPMENT SHED	3550.00	394.44
TOTAL		1173.69

SAW CUT FULL DEPTH	LENGTH 1 (FT)	LENGTH 2 (FT)	LENGTH 3 (FT)	TOTAL (FT)
DOOR 1	1.67	20.00	1.67	23.34
DOOR 2	1.67	20.00	1.67	23.34
DOOR 3	1.83	20.00	1.83	23.66
TOTAL				70.34

STATE OF ILLINOIS
DEPARTMENT OF TRANSPORTATION

REMOVAL PLAN

SCALE: SHEET 2 OF 6 SHEETS STA. TO STA.

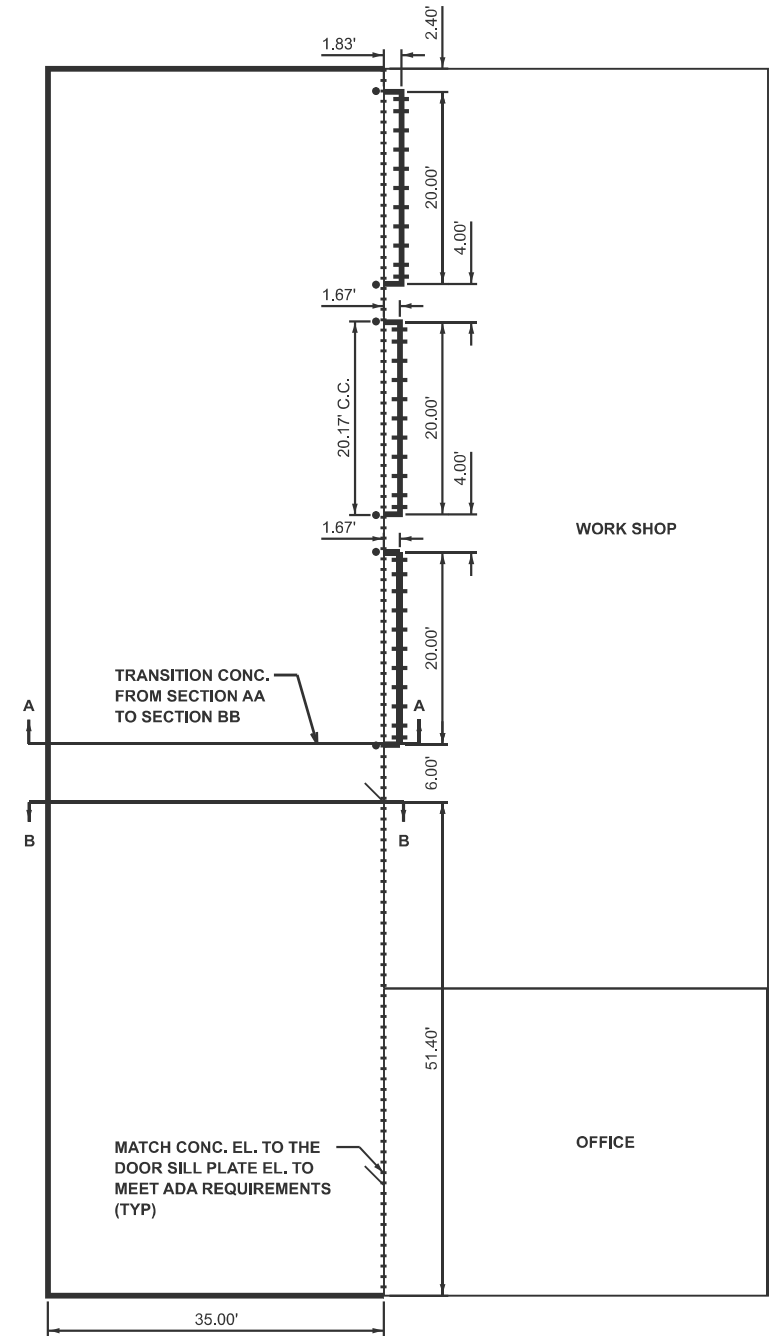
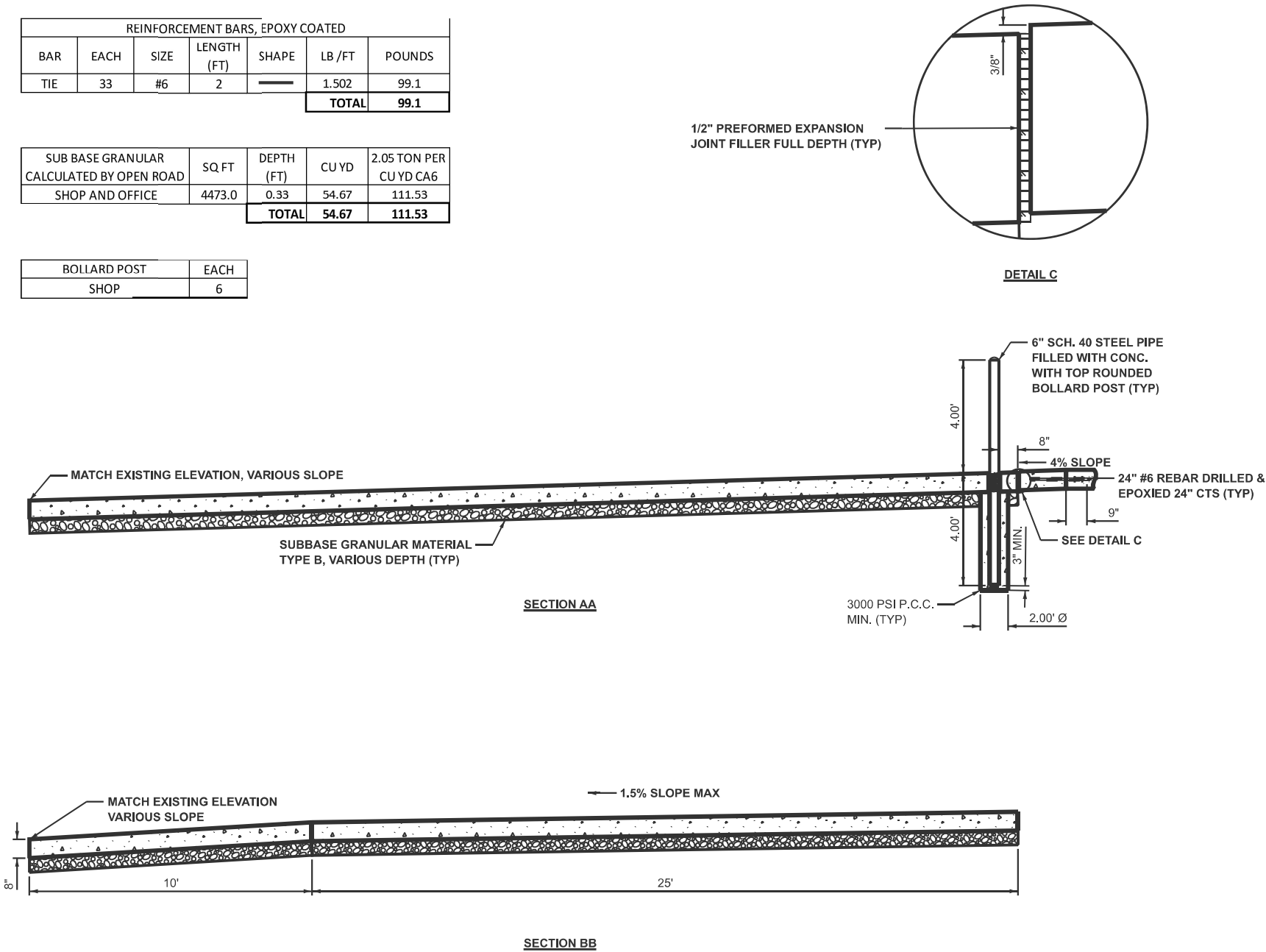
F.A.S RTE.	SECTION	COUNTY	TOTAL SHEETS	SHEET NO.
184	D7 PARKING LOT IMPROV 2025-	LAWRENCE	9	5
CONTRACT NO. 74D36				
ILLINOIS FED. AID PROJECT				

SCHEDULE OF QUANTITIES				
CONCRETE PAD CALCULATED BY OPEN ROAD	SQ FT	DEPTH (FT)	CU YD	SQ YD
SHOP AND OFFICE	4473.0	0.67	111.00	497.00
SHOP DOOR 1	33.4	0.67	0.83	3.71
SHOP DOOR 2	33.4	0.67	0.83	3.71
SHOP DOOR 3	36.6	0.67	0.91	4.07
TOTAL			113.56	508.49

REINFORCEMENT BARS, EPOXY COATED						
BAR	EACH	SIZE	LENGTH (FT)	SHAPE	LB /FT	POUNDS
TIE	33	#6	2		1.502	99.1
TOTAL						99.1

SUB BASE GRANULAR CALCULATED BY OPEN ROAD	SQ FT	DEPTH (FT)	CU YD	2.05 TON PER CU YD CA6
SHOP AND OFFICE	4473.0	0.33	54.67	111.53
TOTAL			54.67	111.53

BOLLARD POST	EACH
SHOP	6



MODEL: plan 1 [Sheet]
FILE NAME: c:\p\work\work\hillelad\1023665D774D38-sht-plan1.dgn

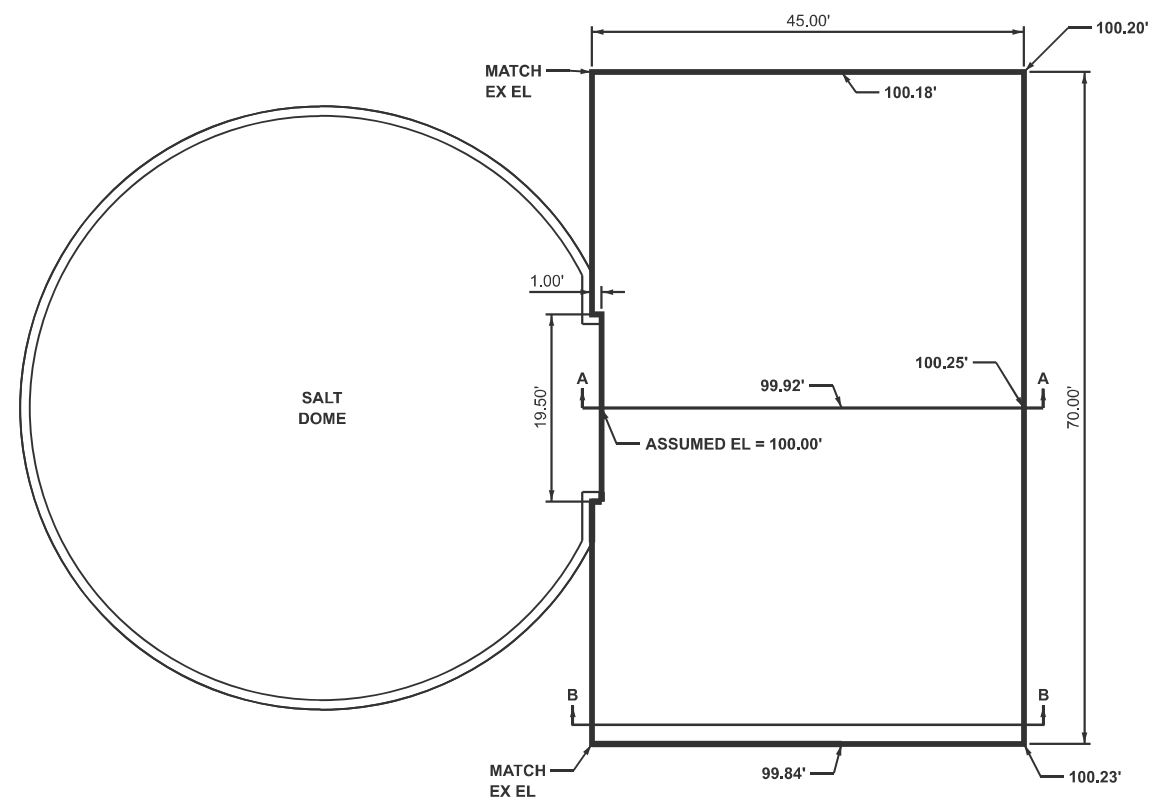
USER NAME = robert.greuel	DESIGNED -	REVISED -
	DRAWN -	REVISED -
	CHECKED -	REVISED -
PLOT DATE = 10/24/2025	DATE -	REVISED -

STATE OF ILLINOIS
DEPARTMENT OF TRANSPORTATION

CONCRETE APRON PLAN

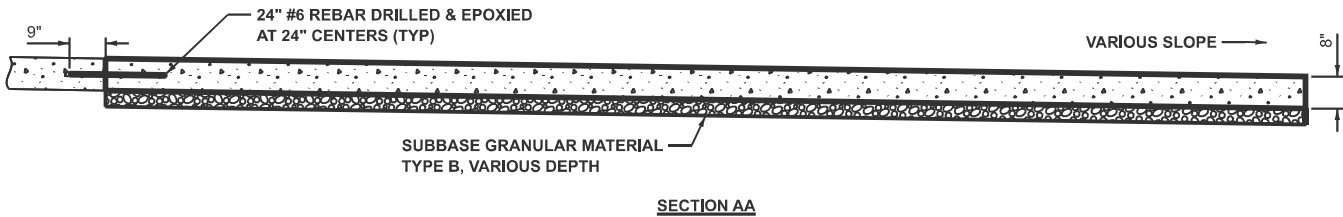
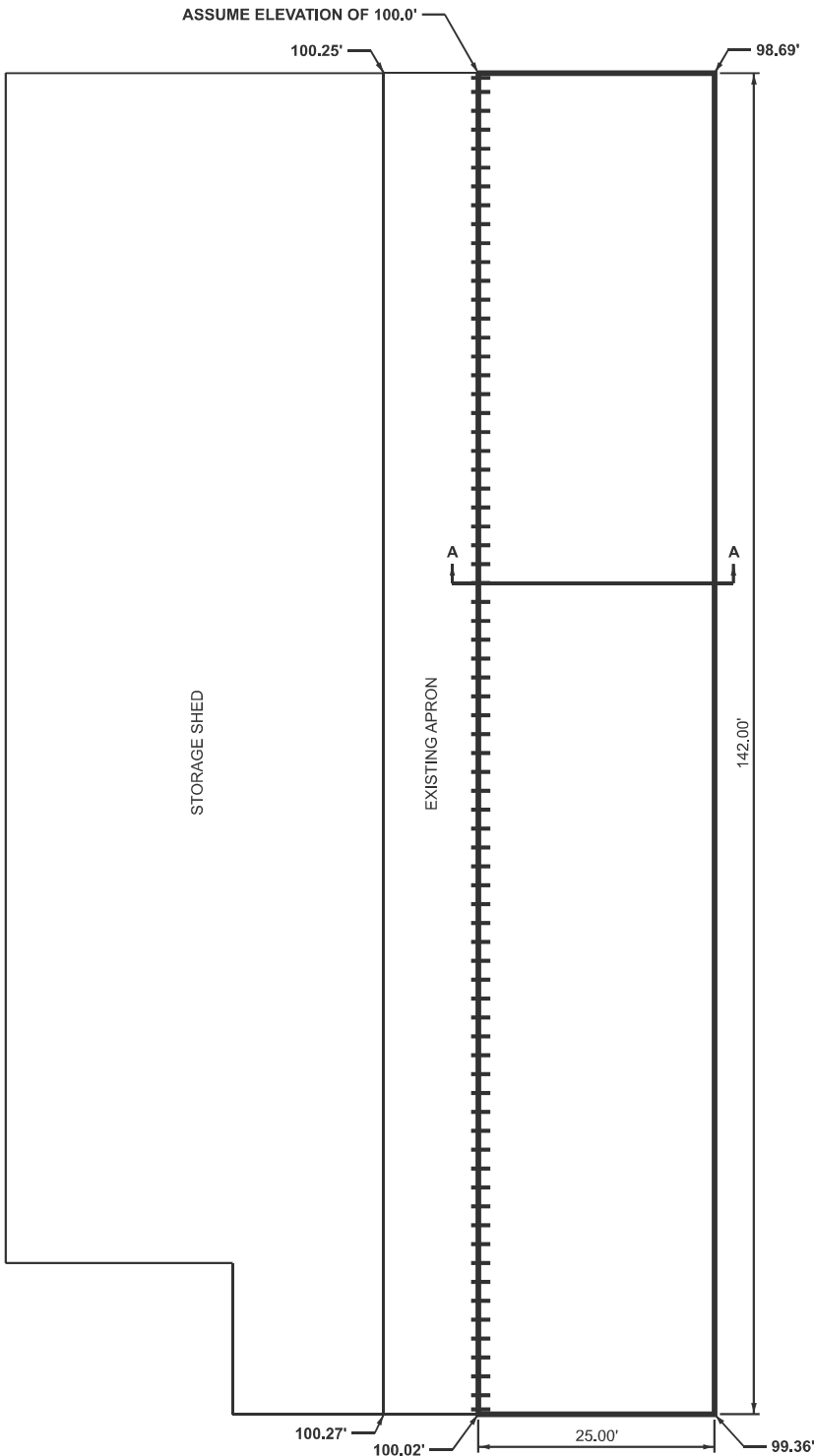
SCALE: SHEET 3 OF 6 SHEETS STA. TO STA.

F.A.S RTE.	SECTION	COUNTY	TOTAL SHEETS	SHEET NO.
184	D7 PARKING LOT IMPROV 2025-	LAWRENCE	9	6
CONTRACT NO. 74D36				
ILLINOIS FED. AID PROJECT				



A cross-section diagram of a road structure. The diagram shows a horizontal road surface with a dashed centerline. Below the surface is a thick, textured layer representing the subgrade. A dimension line at the top indicates a length of 26.00'. On the right side, a vertical dimension line indicates a height of 2' from the subgrade to the top of the road surface.

SUB BASE GRANULAR CALCULATED BY OPEN ROAD	SQ FT	DEPTH (FT)	CU YD	2.05 TON PER CU YD CA6
SALT DOME	3130.5	0.33	38.26	78.05
		TOTAL	38.26	78.05



SCHEDULE OF QUANTITIES

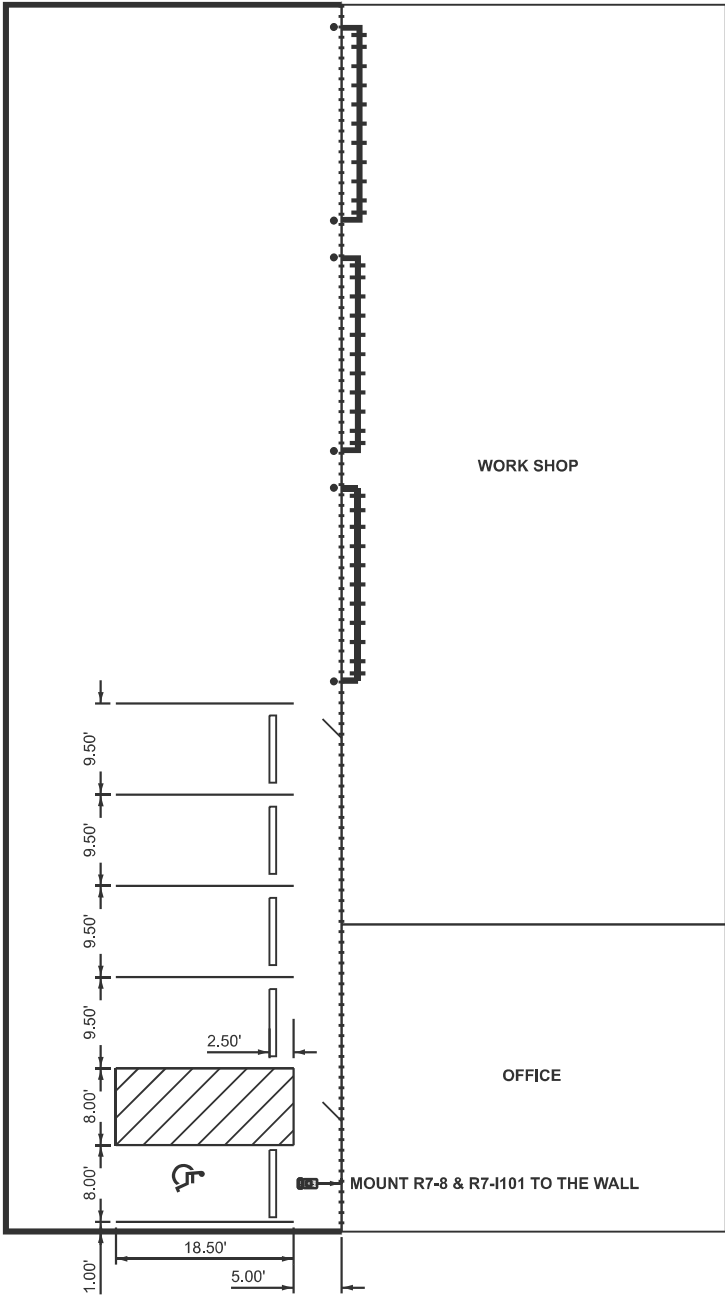
CONCRETE PAD CALCULATED BY OPEN ROAD	SQ FT	DEPTH (FT)	CU YD	SQ YD
EQUIPMENT STORAGE	3550.0	0.67	88.09	394.44
TOTAL			88.09	394.44

REINFORCEMENT BARS, EPOXY COATED						
BAR	EACH	SIZE	LENGTH (FT)	SHAPE	LB /FT	POUNDS
TIE	72	#6	2	—	1.502	216.3
TOTAL						216.3

SUB BASE GRANULAR CALCULATED BY OPEN ROAD	SQ FT	DEPTH (FT)	CU YD	2.05 TON PER CU YD CA6
EQUIPMENT STORAGE	3550.00	0.33	43.39	88.51
TOTAL			43.39	88.51

MODEL: plan 3 [Sheet]
FILE NAME: c:\p\work\wilcothille\jald1023665\0774D36-sht-plan1.dgn

MODEL: pavement marking [Sheet]
FILE NAME: c:\pav. work\pav\chililejad\1023665D774D38-slt-prnk.dgn



PAINT LINE 4" YELLOW	LENGTH (FT)	EACH	(FT)	(SQ FT)	EACH	TOTAL (SQ FT)
STALL LINES	18.5	7	129.5			
VERTICLE	8.0	2	16.0			
DIAGNALS	11.3	4	45.2			
DIAGNALS	3.3	1	3.3			
DIAGNALS	7.3	1	7.3			
DIAGNALS	10.2	1	10.2			
DIAGNALS	6.2	1	6.2			
DIAGNALS	2.1	1	2.1			
LETTERS & SYMBOLS			0.0	3.1	1.0	3.1
		TOTAL	219.8		TOTAL	3.1

PARKING BLOCKS	EACH
IN FRONT OF OFFICE	5



* NOTE
A U.S. DEPARTMENT OF TRANPERTATION R7-8 (RESERVED PARKING) AND R7-1101 (\$250 FINE) SIGN MUST BE PERMANENTLY MOUNTED IN THE CENTER OF THE PARKING SPACE. THE SIGNS MUST BE VERTICALLY MOUNTED ON A POST OR WALL AT THE FRONT CENTER OF THE PARKING SPACE, NO MORE THAN 6 FEET HORIZONTALLY FROM THE FRONT OF THE PARKING SPACE. AT A MINIMUM, THE BOTTEM OF THE R7-8 SIGN MUST BE 5 FEET FROM THE PAVEMENT.

USER NAME	= robert.greuel	DESIGNED	-	REVISED	-
		DRAWN	-	REVISED	-
		CHECKED	-	REVISED	-
PLOT DATE	= 10/24/2025	DATE	-	REVISED	-

STATE OF ILLINOIS
DEPARTMENT OF TRANSPORTATION

PARKING LOT PAVMENT MARKING PLAN

SCALE: SHEET 6 OF 6 SHEETS STA. TO STA.

F.A.S RTE.	SECTION	COUNTY	TOTAL SHEETS	SHEET NO.
184	D7 PARKING LOT IMPROV 2025-	LAWRENCE	9	9
CONTRACT NO. 74D36				
		ILLINOIS	FED. AID PROJECT	