

STATE OF ILLINOIS  
DEPARTMENT OF TRANSPORTATION

F.A.P. RTE.	SECTION	COUNTY	TOTAL SHEETS	SHEET NO.
774	(107Z) RS-4	EFFINGHAM	24	1
		ILLINOIS CONTRACT NO. 74B61		

D-97-004-23

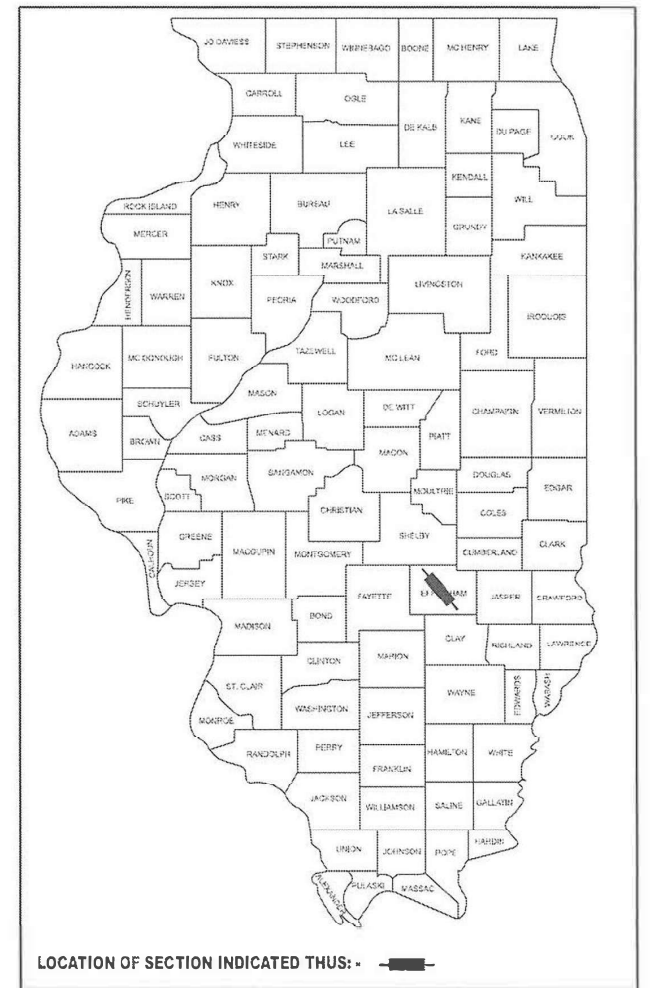
FOR INDEX OF SHEETS, SEE SHEET NO. 2

ADT= 16,850 (2024)

# PROPOSED HIGHWAY PLANS

FAP ROUTE 774 (ILL 32/33)  
SECTION (107Z) RS-4  
PROJECT: STP-NHPP-ED56 (293)  
DESIGNED OVERLAY  
EFFINGHAM COUNTY

C-97-004-23

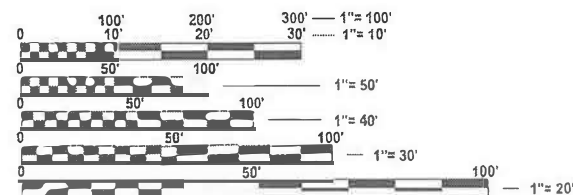
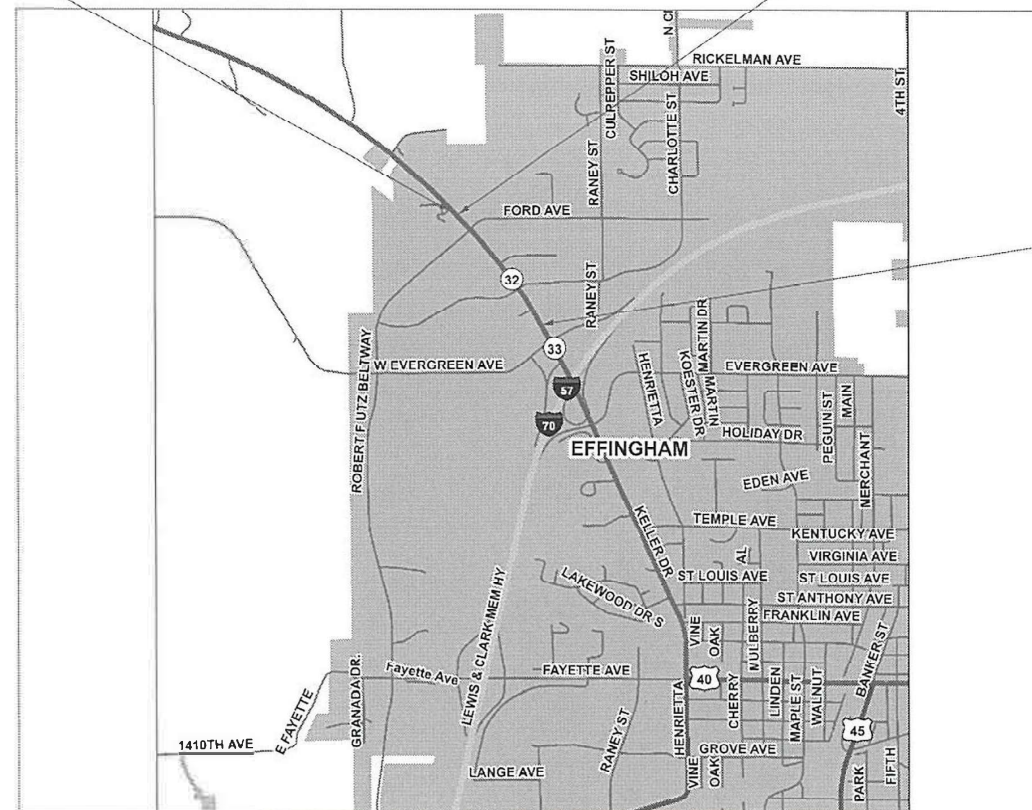


LOCATION OF SECTION INDICATED THUS: -

ENDING STATION: 1037+85

STATION EQUATION: 212+25.77 BK  
1039+00.00 AH

BEGINNING STATION: 188+34



FULL SIZE PLANS HAVE BEEN PREPARED USING STANDARD ENGINEERING SCALES. REDUCED SIZED PLANS WILL NOT CONFORM TO STANDARD SCALES. IN MAKING MEASUREMENTS ON REDUCED PLANS, THE ABOVE SCALES MAY BE USED.

J.U.L.I.E.  
JOINT UTILITY LOCATION INFORMATION FOR EXCAVATION  
1-800-892-0123  
OR 811

PROJECT ENGINEER: MATT BOWER  
PROJECT MANAGER: DAKOTA KINCAID

CONTRACT NO. 74B61

GROSS LENGTH = 2376.00 FT. = 0.450 MILES  
NET LENGTH = 2376.00 FT. = 0.450 MILES

STATE OF ILLINOIS  
DEPARTMENT OF TRANSPORTATION

SUBMITTED OCTOBER 7 2025  
Touss C Price  
REGIONAL ENGINEER

December 5 2025  
See E A Etk  
ENGINEER OF DESIGN AND ENVIRONMENT

December 5 2025  
Grady  
DIRECTOR OF HIGHWAYS PROJECT IMPLEMENTATION

PRINTED BY THE AUTHORITY  
OF THE STATE OF ILLINOIS

INDEX OF SHEETS

SHEET NO.	ITEM
1	COVER SHEET
2	INDEX OF SHEETS, LIST OF STANDARDS, AND GENERAL NOTES
3	SUMMARY OF QUANTITIES
4-6	TYPICAL SECTIONS
7-8	SCHEDULE OF QUANTITIES
9-13	PLAN SHEETS
14-18	PAVEMENT MARKING SHEETS
19-24	DETAILS

STANDARD NO.	DESCRIPTION
000001-09	STANDARD SYMBOLS, ABBREVIATIONS AND PATTERNS
001001-02	AREAS OF REINFORCEMENT BARS
001006	DECIMAL OF AN INCH AND OF A FOOT
442201-04	CLASS C AND D PATCHES
667101-02	PERMANENT SURVEY MARKERS
701602-10	URBAN LANE CLOSURE, MULTILANE, 2W WITH BIDIRECTIONAL LEFT TURN LANE
701701-10	URBAN LANE CLOSURE MULTILANE INTERSECTION
701801-06	SIDEWALK, CORNER OR CROSSWALK CLOSURE
701901-11	TRAFFIC CONTROL DEVICES
780001-05	TYPICAL PAVEMENT MARKINGS
781001-04	TYPICAL APPLICATIONS RAISED REFLECTIVE PAVEMENT MARKERS DETECTOR
886001-01	LOOP INSTALLATIONS
886006-01	TYPICAL LAYOUTS FOR DETECTION LOOPS

GENERAL NOTES

WHEN APPLYING SHORT TERM PAVEMENT MARKINGS,TEMPORARY TAPE SHALL BE USED ON THE SURFACE AND PAINT SHALL BE USED ON THE MILLED AND BINDER SURFACES.

GROOVING FOR PAVEMENT MARKING LETTERS AND SYMBOLS SHALL BE DONE IN THE SHAPE OF THE PROPOSED MARKINGS.

VIBRATORY ROLLERS IN THE DYNAMIC MODE WILL NOT BE ALLOWED WITHIN THE CITY LIMITS OF EFFINGHAM. THIS DOES NOT RELIEVE THE CONTRACTOR OF DENSITY REQUIREMENTS FOR THE CONSTRUCTION OF THE HOT-MIX ASPHALT BINDER SURFACE COURSE AS SPECIFIED IN SECTIONS 406 AND 407 OF THE STANDARD SPECIFICATIONS.

LOCATION(S)	MIXTURE USE(S)	PG	DESIGN AIR VOIDS	MIXTURE COMPOSITIO N	FRICTION AGGREGATE	MIXTURE WEIGHT	QUALITY MANAGEMENT PROGRAM	SUBLOT SIZE	MATERIAL TRANSFER DEVICE (REQUIRED?)
MAINLINE	POLYMERIZED HOT-MIX ASPHALT SURFACE COURSE, IL-9.5, MIX "D", N90 (2")	SBS PG 76-22	4.0% @ N=90	IL - 9.5	MIXTURE D	N90	QCP	1000	N/A
MAINLINE	POLYMERIZED HOT-MIX ASPHALT BINDER COURSE, IL-9.5FG, N90 (1.75")	SBS PG 76-22	4.0% @ N=90	IL - 9.5FG	N/A	N90	QCP	1000	N/A
PATCHING	HOT-MIX ASPHALT BINDER COURSE, IL-19.0, N90	SBS PG 64-22	4.0% @ N=90	IL - 19.0	N/A	N90	QCQA	3000	N/A
HMA SHOULDERS	HOT-MIX ASPHALT SURFACE COURSE, IL-9.5, MIX "C", N70 (2")	SBS PG 64-22	4.0% @ N=70	IL - 9.5	MIXTURE C	N70	QCQA	3000	N/A
HMA SHOULDERS	HOT-MIX ASPHALT BINDER COURSE, IL-9.5FG, N70 (1.75")	SBS PG 64-22	4.0% @ N=70	IL - 9.5FG	N/A	N70	QCQA	3000	N/A

REV - MS

MODEL: Index of sheets [Sheet]  
FILE NAME: c:\pw\work\pwwd\illinois.gov dakota.kincaid@illinois.gov\d1088184\D74B61.sht-agencnote.dgn

	USER NAME = dakota.kincaid	DESIGNED -	REVISED -	STATE OF ILLINOIS DEPARTMENT OF TRANSPORTATION	INDEX OF SHEETS, GENERAL NOTES SHEETS			F.A.P RTE	SECTION	COUNTY	TOTAL SHEETS	SHEET NO.
		DRAWN -	REVISED -					774	(107Z) RS-4	EFFINGHAM	24	2
		CHECKED -	REVISED -					CONTRACT NO. 74B61				
	PLOT DATE = 9/25/2025	DATE -	REVISED -		SCALE:	SHEET 1	OF 1	SHEETS	STA.	TO STA.	ILLINOIS   FED. AID PROJECT	

MODEL - Summary of Quantities (Sheet)  
FILE NAME: c:\pwworking\illinois.gov\dakota.kincald@illinois.gov dakota.kincald\1088184\DT74B61-sht-SQO.dgn

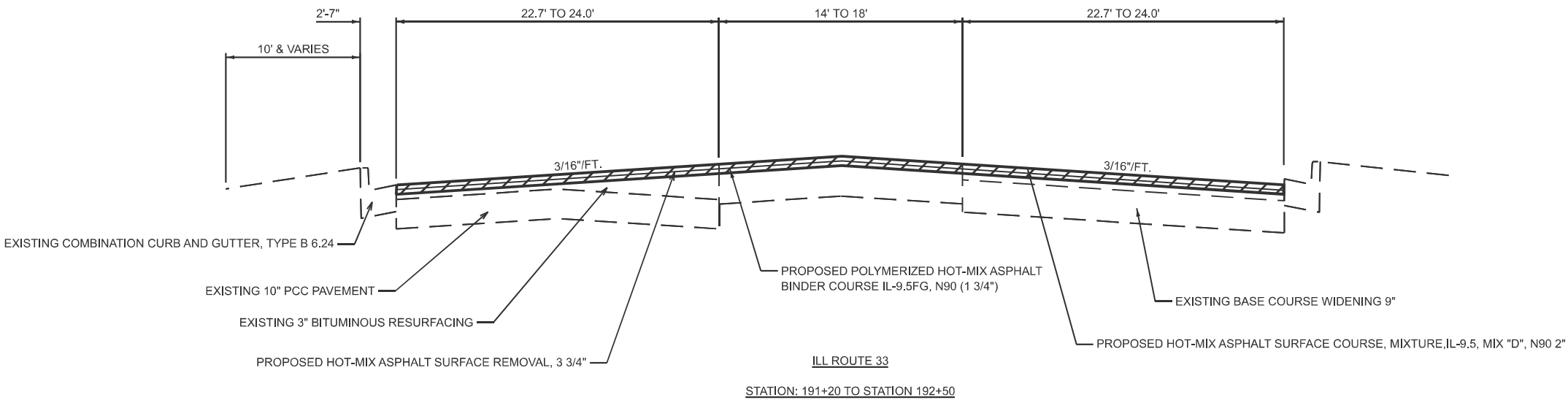
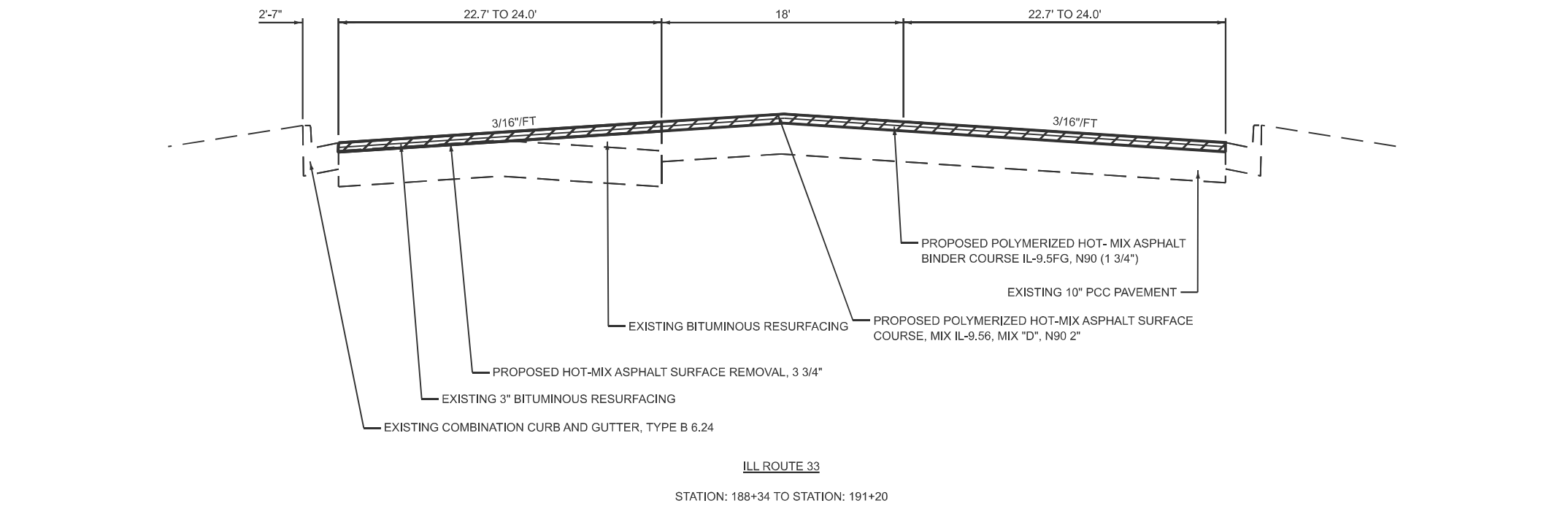
CODE NO.	ITEM	UNIT	TOTAL QUANTITY	80% FED 20% STATE	80% FED 20% STATE
				ROADWAY 0005/STBG	ROADWAY 0005/NHPP
				URBAN	URBAN
40600290	BITUMINOUS MATERIALS (TACK COAT)	POUND	12055	8652	3403
40600370	LONGITUDINAL JOINT SEALANT	FOOT	10028	7124	2904
40600990	TEMPORARY RAMP	SQ YD	261	135	126
40603219	POLYMERIZED HOT MIX ASPHALT BINDER COURSE, IL-9.5FG, N90	TON	1706	1212	494
40604164	POLYMERIZED HOT-MIX ASPHALT SURFACE COURSE, IL-9.5, MIX "D", N90	TON	1949	1384	565
44000164	HOT-MIX ASPHALT SURFACE REMOVAL, 3 3/4"	SQ YD	18155	12912	5243
44201839	CLASS D PATCHES, TYPE II, 16 INCH	SQ YD	415	350	65
44201843	CLASS D PATCHES, TYPE III, 16 INCH	SQ YD	40	40	0
48102100	AGGREGATE WEDGE SHOULDER, TYPE B	TON	102	102	0
48203100	HOT- MIX ASPHALT SHOULDERS	TON	32	32	0
67000400	ENGINEER'S FIELD OFFICE, TYPE A	CAL MO	3	2.07	0.93
67100100	MOBILIZATION	L SUM	1	0.7	0.3
70102632	TRAFFIC CONTROL AND PROTECTION, STANDARD 701602	L SUM	1	0.7	0.3
70102635	TRAFFIC CONTROL AND PROTECTION, STANDARD 701701	L SUM	1	0.7	0.3
70107025	CHANGEABLE MESSAGE SIGN	CAL DA	28	19	9
70300100	SHORT TERM PAVEMENT MARKING	FOOT	6173	4564	1609
70300150	SHORT TERM PAVEMENT MARKING REMOVAL	SQ FT	2301	1764	537
70300211	TEMPORARY PAVEMENT MARKING LETTERS AND SYMBOLS - PAINT	SQ FT	454	266	188

CODE NO.	ITEM	UNIT	TOTAL QUANTITY	80% FED 20% STATE	80% FED 20% STATE
				ROADWAY 0005/STBG	ROADWAY 0005/NHPP
				URBAN	URBAN
70300221	TEMPORARY PAVEMENT MARKING - LINE 4"- PAINT	FOOT	6338	4780	1558
70300241	TEMPORARY PAVEMENT MARKING - LINE 6"- PAINT	FOOT	3490	1354	2136
70300261	TEMPORARY PAVEMENT MARKING - LINE 12"- PAINT	FOOT	195	161	34
70300281	TEMPORARY PAVEMENT MARKING - LINE 24"- PAINT	FOOT	342	283	59
* 78004620	PREFORMED PLASTIC PAVEMENT MARKING, TYPE D- STANDARD- LINE 4"	FOOT	6338	4780	1558
* 78004630	PREFORMED PLASTIC PAVEMENT MARKING, TYPE D- STANDARD- LINE 6"	FOOT	1904	1172	732
* 78004660	PREFORMED PLASTIC PAVEMENT MARKING, TYPE D- STANDARD- LINE 12"	FOOT	195	161	34
* 78009000	MODIFIED URETHANE PAVEMENT MARKING - LETTERS AND SYMBOLS	SQ FT	454	266	188
* 78009006	MODIFIED URETHANE PAVEMENT MARKING - LINE 6"	FOOT	1586	1547	39
* 78009024	MODIFIED URETHANE PAVEMENT MARKING - LINE 24"	FOOT	342	303	39
* 78011025	GROOVING FOR RECESSED PAVEMENT MARKING 5"	FOOT	6338	4780	1558
* 78011035	GROOVING FOR RECESSED PAVEMENT MARKING 7"	FOOT	1904	1172	732
* 78011065	GROOVING FOR RECESSED PAVEMENT MARKING 13"	FOOT	195	161	34
* 78100100	RAISED REFLECTIVE PAVEMENT MARKER	EACH	227	162	65
78300200	RAISED REFLECTIVE PAVEMENT MARKER REMOVAL	EACH	227	162	65
* 88600100	DETECTOR LOOP, TYPE I	EACH	2624	1702	922
X4060995	TEMPORARY RAMP (SPECIAL)	SQ YD	629	324	305

\* SPECIALTY ITEM

	USER NAME = dakota.kincald	DESIGNED -	REVISED -	STATE OF ILLINOIS DEPARTMENT OF TRANSPORTATION	SUMMARY OF QUANTITIES			F.A.P RTE.	SECTION	COUNTY	TOTAL SHEETS	SHEET NO.
		DRAWN -	REVISED -					774	(107Z) RS-4	EFFINGHAM	24	3
		CHECKED -	REVISED -					CONTRACT NO. 74B61				
	PLOT DATE = 10/2/2025	DATE -	REVISED -		SCALE:	SHEET 1	OF 1	SHEETS	STA.	TO STA.	ILLINOIS FED.AID PROJECT	

PROPOSED CROSS SECTIONS

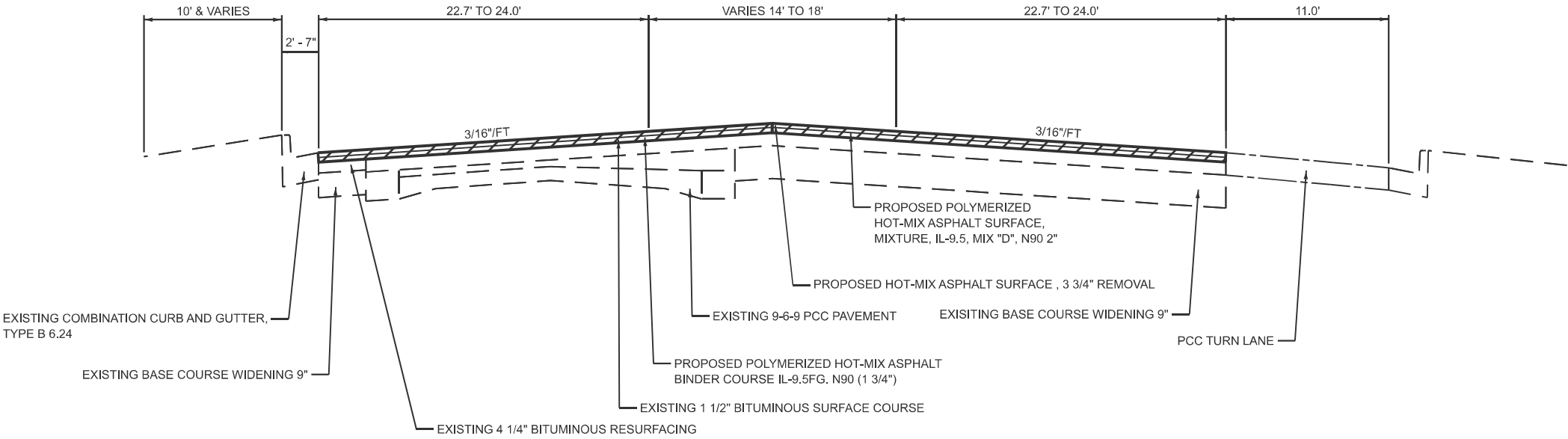


MODEL: Typical 1 [Sheet]  
FILE NAME: c:\p\work\illinois\gov dakota.kincaid\illinois.gov dakota.kincaid\088184D774B61-ctt-typicals.dgn

	USER NAME = dakota.kincaid	DESIGNED -	REVISED -	STATE OF ILLINOIS DEPARTMENT OF TRANSPORTATION	TYPICAL CROSS SECTION			F.A.P RTE.	SECTION	COUNTY	TOTAL SHEETS	SHEET NO.
		DRAWN -	REVISED -					774	(107Z) RS-4	EFFINGHAM	24	4
		CHECKED -	REVISED -					CONTRACT NO. 74B61				
	PLOT DATE = 9/24/2025	DATE -	REVISED -		SCALE:	SHEET 1	OF 3	SHEETS	STA.	TO STA.	ILLINOIS FED. AID PROJECT	

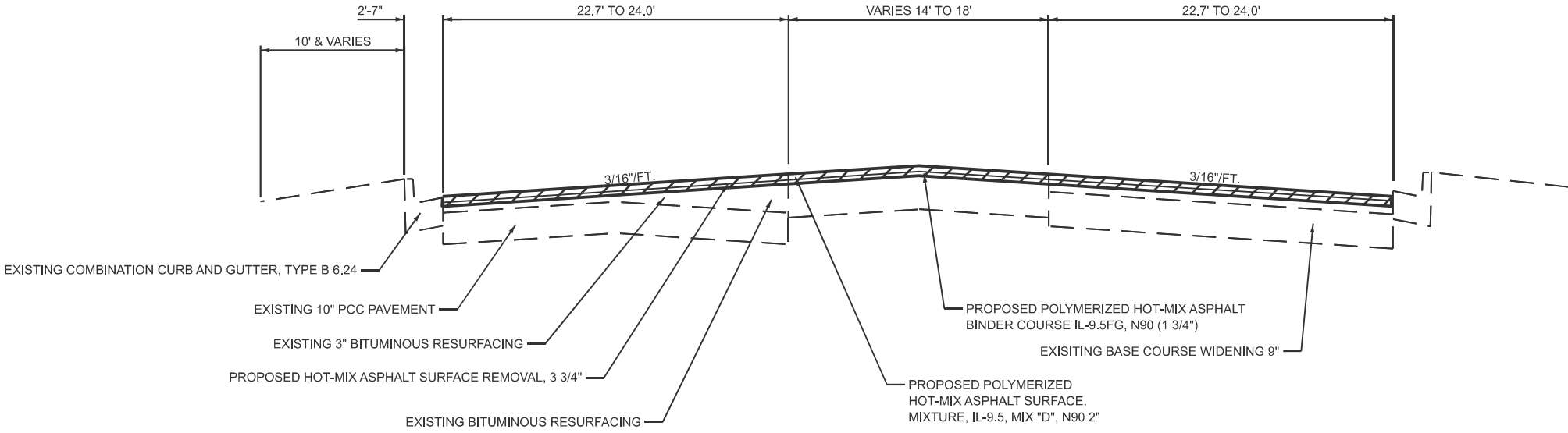


PROPOSED CROSS SECTIONS



ILL ROUTE 33

STA 192+50 TO STA 204+45



ILL ROUTE 33

STA 204+45 TO STA 211+15.77

MODEL: Typical 2 (Sheet)  
FILE NAME: c:\paw\work\illinois\gov\illinois\gov\d\088184D74B61-sht-typicals.dgn

USER NAME	= dakota.kincaid	DESIGNED	-	REVISED	-
		DRAWN	-	REVISED	-
		CHECKED	-	REVISED	-
PLOT DATE	= 9/24/2025	DATE	-	REVISED	-

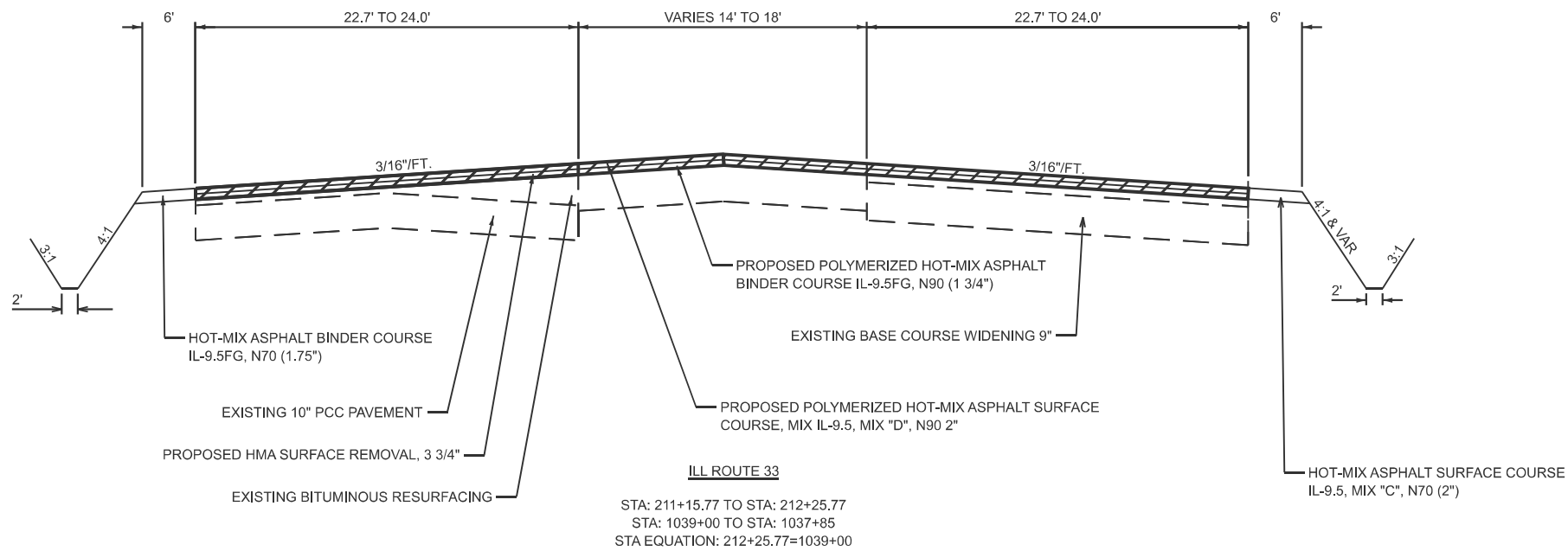
STATE OF ILLINOIS  
DEPARTMENT OF TRANSPORTATION

TYPICAL CROSS SECTION

SCALE: SHEET 2 OF 3 SHEETS STA. TO STA.

F.A.P. RTE.	SECTION	COUNTY	TOTAL SHEETS	SHEET NO.
774	(107Z) RS-4	EFFINGHAM	24	5
CONTRACT NO. 74B61				
ILLINOIS FED. AID PROJECT				

PROPOSED CROSS SECTION



MODEL: Typical 3 (Sheet)  
FILE NAME: c:\pwworking\illinois.gov\_dakota.kincaid\illinois.gov\d1088184\74B61-sht-typicals.dgn

	USER NAME = dakota.kincaid	DESIGNED -	REVISED -	STATE OF ILLINOIS DEPARTMENT OF TRANSPORTATION	TYPICAL CROSS SECTION			F.A.P RTE.	SECTION	COUNTY	TOTAL SHEETS	SHEET NO.
		DRAWN -	REVISED -					774	(107Z) RS-4	EFFINGHAM	24	6
		CHECKED -	REVISED -					CONTRACT NO. 74B61				
	PLOT DATE = 9/24/2025	DATE -	REVISED -		SCALE:	SHEET 3	OF 3	SHEETS	STA.	TO STA.	ILLINOIS FED. AID PROJECT	

MODEL: Schedule of Quantities (Sheet)  
FILE NAME: c:\paw\_work\wisdo\illinois.gov\_dakota.kincaid\illinois.gov\d1088184\DT74B61-sht-schedule.dgn

PAVING SCHEDULE															
STATION TO STATION			LENGTH	POLYMERIZED HOT-MIX ASPHALT SURFACE COURSE, IL-9.5, MIX "D", N90 (2")	POLYMERIZED HOT-MIX ASPHALT BINDER COURSE, IL-9.5FG, N 90 (1.75")	HOT-MIX ASPHALT SURFACE REMOVAL (3.75")	BITUMINOUS MATERIALS (TACK COAT)	TEMPORARY RAMPS (BEFORE BINDER)	TEMPORARY RAMPS (AFTER BINDER)	TEMPORARY RAMPS SPECIAL (SBL)	TEMPORARY RAMPS SPECIAL (NBL)	LONGITUDINAL JOINT SEALANT	HOT-MIX ASPHALT SURFACE COURSE, IL-9.5, MIX "C", N70 (2")	HOT-MIX ASPHALT BINDER COURSE, IL-9.5FG, N70 (1.75")	AGGREGATE WEDGE SHOULDER TYPE B (1")
			FOOT	TON	TON	SQ YD	POUND	SQ YD	SQ YD	SQ YD	SQ YD	FOOT	TON	TON	TON
188+34	TO	204+50	1616	1257	1100	11671	7878	86	40	208	276	6464	0	0	0
204+50	TO	210+20	570	443	388	3958	2672	0	0	54	91	2280	0	0	0
210+20	TO	212+25.77	206	160	140	1579	966	0	0	0	0	824	8	8	51
212+25.77	TO	1039+00	STATION EQUATION												
1039+00	TO	1037+85	115	89	78	947	539	92	43	0	0	460	8	8	51
		TOTAL	2507	1949	1706	18155	12055	178	83	262	367	10028	16	16	102

AGGREGATE WEDGE SHOULDER TYPE B (RIGHT SIDE)							
STATION	TO	STATION	LENGTH	WIDTH (FEET)	DEPTH (INCHES)	CU YD	TONS
211+15.89	TO	212+25.77	109	3	0-1	12	25
212+25.77	TO	1039+00	STATION EQUATION				
1039+00	TO	1037+85	115	3	0-1	13	26
		TOTAL	224			25	51

AGGREGATE WEDGE SHOULDER TYPE B (LEFT SIDE)							
STATION	TO	STATION	LENGTH	WIDTH (FEET)	DEPTH (INCHES)	CU YD	TONS
211+18.77	TO	212+25.77	107	3	0-1	12	24
212+25.77	TO	1039+00	STATION EQUATION				
1039+00	TO	1037+85	115	3	0-1	13	26
		TOTAL	222			25	51

ASPHALT SHOULDER SURFACE COURSE (2") RIGHT SIDE							
STATION	TO	STATION	LENGTH	WIDTH (FEET)	DEPTH	SQ YD	TONS
211+15.89	TO	212+25.77	109	0-6	2	36	4
212+25.77	TO	1039+00	STATION EQUATION				
1039+00	TO	1037+85	115	0 6	2	38	4
		TOTAL	224			74	8

ASPHALT SHOULDER SURFACE COURSE (2") LEFT SIDE							
STATION	TO	STATION	LENGTH	WIDTH (FEET)	DEPTH	SQ YD	TONS
211+18.77	TO	212+25.77	107	0-6	2	36	4
212+25.77	TO	1039+00	STATION EQUATION				
1039+00	TO	1037+85	115	0-6	2	38	4
		TOTAL	222			74	8

ASPHALT SHOULDER BINDER COURSE (1.75") RIGHT SIDE							
STATION	TO	STATION	LENGTH	WIDTH (FEET)	DEPTH	SQ YD	TONS
211+15.89	TO	212+25.77	109	0-6	1.75	36	4
212+25.77	TO	1039+00	STATION EQUATION				
1039+00	TO	1037+85	115	0-6	1.75	38	4
		TOTAL	224			74	8

ASPHALT SHOULDER BINDER COURSE (1.75") LEFT SIDE							
STATION	TO	STATION	LENGTH	WIDTH (FEET)	DEPTH	SQ YD	TONS
211+18.77	TO	212+25.77	107	0-6	1.75	36	4
212+25.77	TO	1039+00	STATION EQUATION				
1039+00	TO	1037+85	115	0-6	1.75	38	4
		TOTAL	222			74	8

	USER NAME	= dakota.kincaid	DESIGNED	-	REVISED	-	STATE OF ILLINOIS DEPARTMENT OF TRANSPORTATION	SCHEDULE OF QUANTITIES				F.A.P RTE.	SECTION	COUNTY	TOTAL SHEETS	SHEET NO.	
			DRAWN	-	REVISED	-						774	(107Z) RS-4	EFFINGHAM	24	7	
			CHECKED	-	REVISED	-						CONTRACT NO. 74B61					
	PLOT DATE	= 9/24/2025	DATE	-	REVISED	-		SCALE:	SHEET 1	OF 2	SHEETS	STA.	TO STA.	ILLINOIS			FED. AID PROJECT

MODEL: Schedule of Quantities 2 (Sheet)  
FILE NAME: c:\paw\_work\wisdo\illinois.gov\_dakota.kincaid\illinois.gov\_dakota.kincaid\schedule.dgn

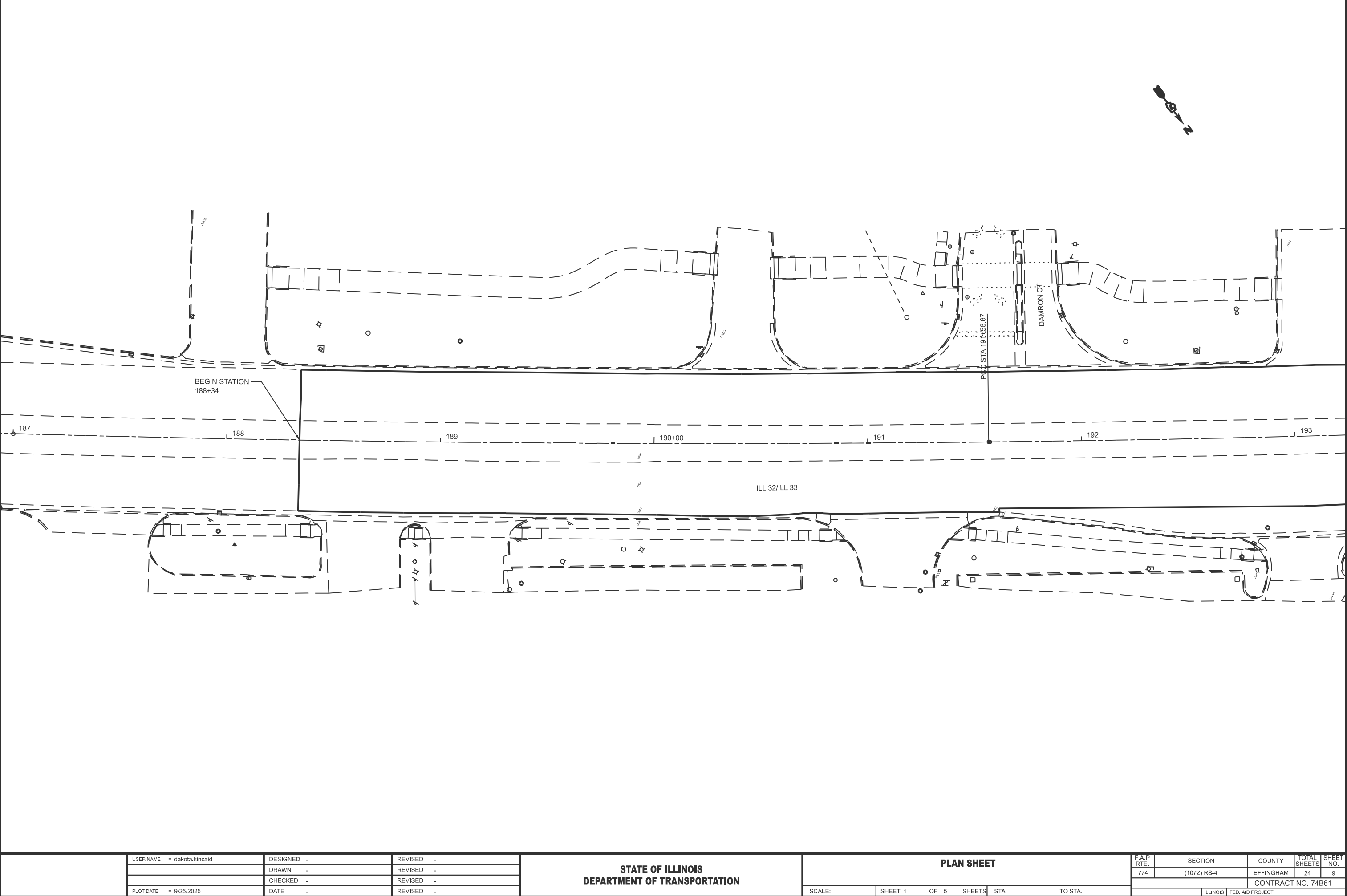
PAVEMENT MARKING SCHEDULE												
STATION TO STATION			LENGTH	PREFORMED PLASTIC PAVEMENT MARKING, TYPE B-INLAID-LINE 4" (YELLOW)	PREFORMED PLASTIC PAVEMENT MARKING, TYPE B- INLAID-LINE 4" (WHITE)	PREFORMED PLASTIC PAVEMENT MARKING, TYPE B-INLAID-LINE 6" (WHITE)	PREFORMED PLASTIC PAVEMENT MARKING, TYPE B-INLAID-LINE 12" (YELLOW)	MODIFIED URETHANE PAVEMENT MARKING-LINE 6" (WHITE)	MODIFIED URETHANE PAVEMENT MARKING-LINE 24" (WHITE)	MODIFIED URETHANE PAVEMENT MARKING LETTERS AND SYMBOLS	RAISED REFLECTIVE PAVEMENT MARKER REMOVAL	RAISED REFLECTIVE PAVEMENT MARKER
			FOOT	FOOT	FOOT	FOOT	FOOT	FOOT	FOOT	SQ FT	EACH	EACH
188+34	TO	193+21	487	1218	0	293	17	0	0	125	33	33
193+51	TO	195+21	170	340	0	387	17	0	0	63	32	32
195+21	TO	196+61	140	0	0	52	0	734	190	0	0	0
196+61	TO	197+92	131	262	0	111	0	0	0	47	24	24
197+92	TO	198+42	50	252	0	113	31	0	0	0	24	24
198+42	TO	204+77	635	1588	0	113	0	0	0	94	24	24
204+77	TO	206+47	170	680	0	170	67	0	0	0	24	24
206+47	TO	208+37	190	380	0	340	0	0	0	47	25	25
208+37	TO	209+53	116	0	0	0	0	852	152	0	0	0
209+53	TO	211+43	190	380	0	226	0	0	0	47	14	14
211+43	TO	212+25.77	83	331	217	41	9	0	0	0	13	13
212+25.77	TO	1039+00	STATION EQUATION									
1039+00	TO	1037+85	115	460	230	58	54	0	0	31	14	14
		TOTAL	2477	5891	447	1904	195	1586	342	454	227	227

TEMPORARY PAVEMENT MARKING SCHEDULE										
STATION TO STATION			LENGTH	TEMPORARY PAVEMENT MARKING-LINE 4" PAINT (YELLOW)	TEMPORARY PAVEMENT MARKING-LINE 4" PAINT (WHITE)	TEMPORARY PAVEMENT MARKING-LINE 6" PAINT (WHITE)	TEMPORARY PAVEMENT MARKING-LINE 12" PAINT (YELLOW)	TEMPORARY PAVEMENT MARKING-LINE 6" PAINT (WHITE)	TEMPORARY PAVEMENT MARKING-LINE 24" PAINT	TEMPORARY PAVEMENT MARKING LETTERS/SYMBOLS PAINT
			FOOT	FOOT	FOOT	FOOT	FOOT	FOOT	FOOT	SQ FT
188+34	TO	193+21	487	1218	0	293	17	0	0	125
193+51	TO	195+21	170	340	0	387	17	0	0	63
195+21	TO	196+61	140	0	0	52	0	734	190	0
196+61	TO	197+92	131	262	0	111	0	0	0	47
197+92	TO	198+42	50	252	0	113	31	0	0	0
198+42	TO	204+77	635	1588	0	113	0	0	0	94
204+77	TO	206+47	170	680	0	170	67	0	0	0
206+47	TO	208+37	190	380	0	340	0	0	0	47
208+37	TO	209+53	116	0	0	0	0	852	152	0
209+53	TO	211+43	190	380	0	226	0	0	0	47
211+43	TO	212+25.77	83	331	217	41	9	0	0	0
212+25.77	TO	1039+00	STATION EQUATION							
1039+00	TO	1037+85	115	460	230	58	54	0	0	31
		TOTAL	2477	5891	447	1904	195	1586	342	454

SCHEDULE			
DETECTOR LOOP, TYPE I			
INTERSECTION			
ILL 32/33 FORD AVE			FEET
NB ILL 32/33	(A1,A2,A3)	(3X24)+17'=9'+5'=-	103
NB ILL 32/33	(A4,A5,A6)	(3X24)+27'+20'+17'=-	136
SB ILL 32/33	(B1,B2,B3)	(3X24)+19'+24'+21'=-	136
SB ILL 32/33	(B4,B5,B6)	(3X24)+6'+8'+13'=-	99
NB LT TRN IL 32/33	(C1,C2,C3)	(3X24)+39'+33'+31'=-	175
SB LT TRN IL 32/33	(D1,D2,D3)	(3X24)+29'+38'+33'=-	172
SB ADV. IL 32/33	(E1,E2)	(2X24)+32'=-	80
NB ADV. IL 32/33	(F1,F2)	(2X24)+21'=-	69
		TOTAL:	970
INTERSECTION			
ILL 32/33 AVE MID AMERICA			FEET
NB III 32/33	(A1 , A2 , A3)	(3X24)+30'+38'+50'=-	190
NB III 32/33	(A4 , A5 , 63)	(3X24)+45'+58'+70'=-	245
SB III 32/33	(B1 , B2 , B3)	(3X24)+35'+48'+63'=-	218
SB III 32/33	(B4 , B4 , B5)	(3X24)+22'+34'+47'=-	175
NB LT TRN IL 32/33	(C1 , C2 , C3)	(3X24)+65'+77'+90'=-	304
NB RT TRN IL 32/33	(C4 , C5)	(3X24)+15'+27' =	90
SB LT TRN IL 32/33	(D1 , D2 , D3)	(3X24)+55'+65'+77'=-	269
SB ADV. IL 32/33	(E1 , E2)	(2X24)+22'=-	70
NB ADV. IL 32/33	(F1 , F2)	(2X24)+45'=-	93
		TOTAL:	1654
NOTE: INTERSECTION OF IL 32/33 AND WEST EVERGREEN ARE CAMEREADETECTION			

	USER NAME   = dakota.kincaid	DESIGNED   -	REVISED   -	STATE OF ILLINOIS DEPARTMENT OF TRANSPORTATION	SCHEDULE OF QUANTITIES				F.A.P RTE.	SECTION	COUNTY	TOTAL SHEETS	SHEET NO.	
		DRAWN    -	REVISED   -						774	(107Z) RS-4	EFFINGHAM	24	8	
		CHECKED   -	REVISED   -						CONTRACT NO. 74B61					
	PLOT DATE   = 9/24/2025	DATE       -	REVISED   -		SCALE:	SHEET 2	OF 2	SHEETS	STA.	TO STA.	ILLINOIS   FED. AID PROJECT			

MODEL: Plan Sheet 1 [Sheet]  
FILE NAME: c:\pwworking\illinois.gov\_dakota.kincald\illinois.gov\_dakota.kincald\1088184D74B61-sht-Plans.dgn



USER NAME	= dakota.kincald	DESIGNED	-	REVISED	-
		DRAWN	-	REVISED	-
		CHECKED	-	REVISED	-
PLOT DATE	= 9/25/2025	DATE	-	REVISED	-

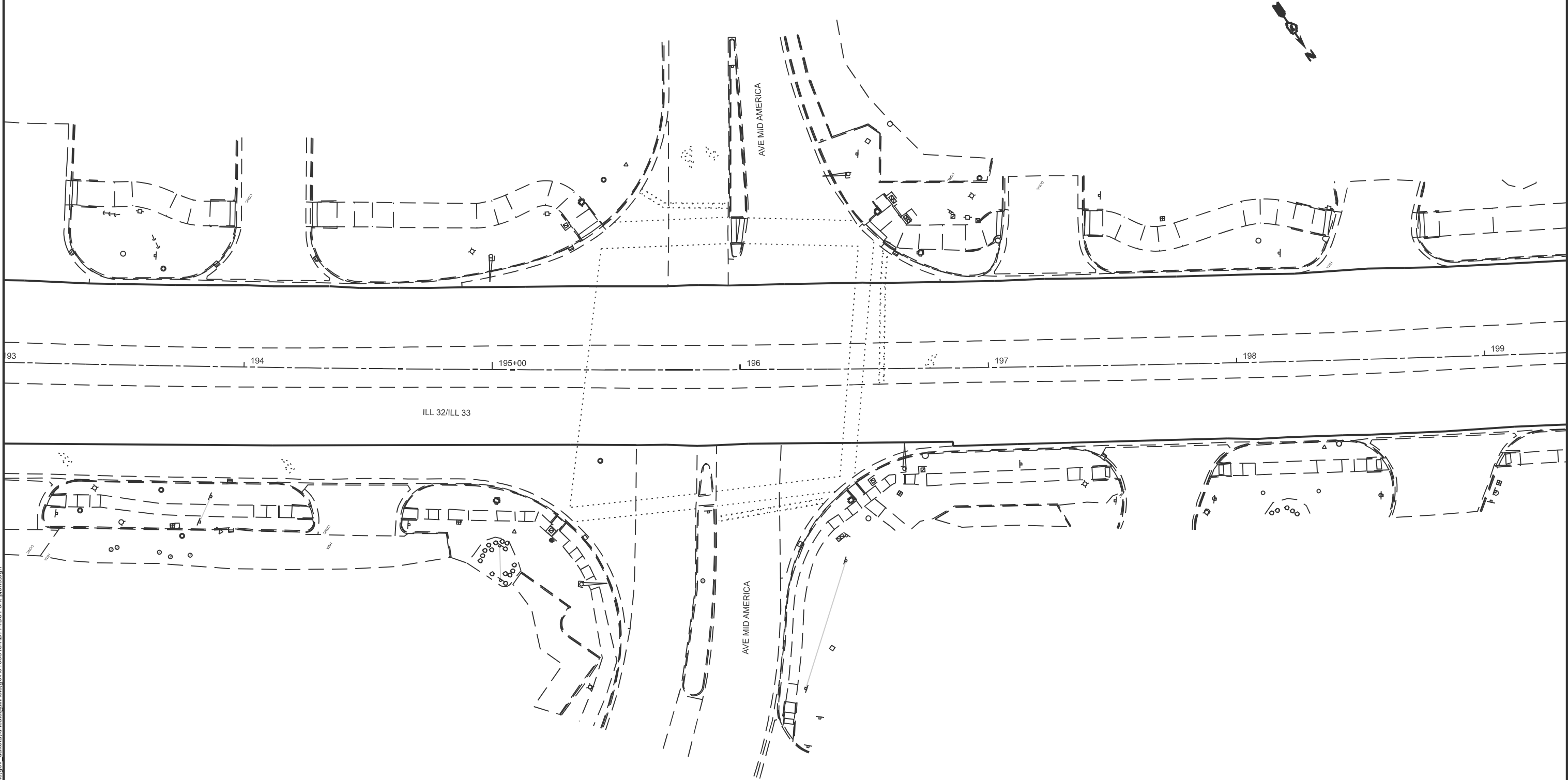
STATE OF ILLINOIS  
DEPARTMENT OF TRANSPORTATION

PLAN SHEET			
SCALE:	SHEET 1	OF 5	SHEETS
	STA.		TO STA.

F.A.P. RTE.	SECTION	COUNTY	TOTAL SHEETS	SHEET NO.
774	(107Z) RS-4	EFFINGHAM	24	9
CONTRACT NO. 74B61				
		ILLINOIS	FED. AID PROJECT	

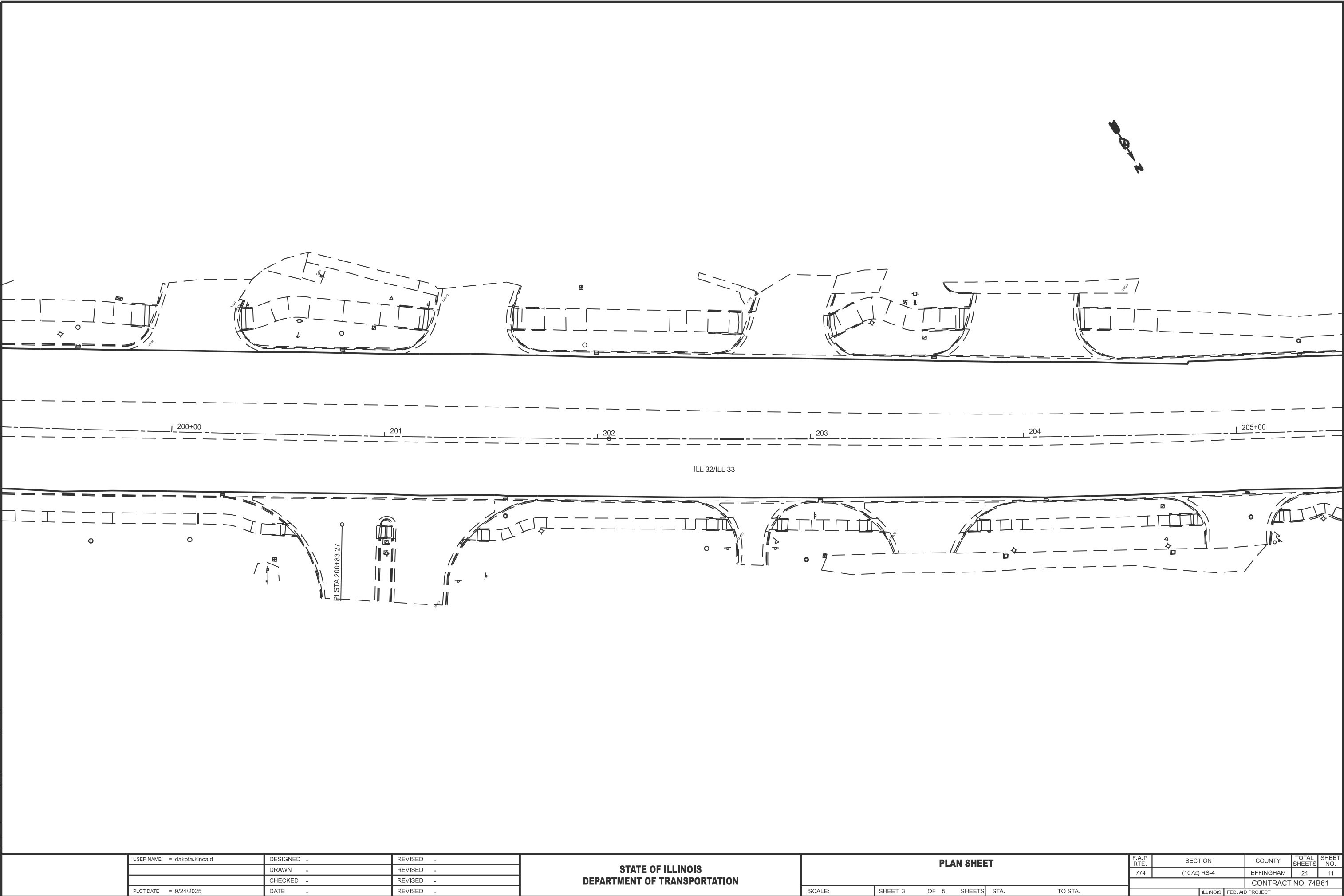


MODEL: Plan Sheet 2 [Sheet]  
FILE NAME: c:\pw\work\illinois.gov\illinois.gov\dakota.kincald\088184D774B61-sht-Plans.dgn



	USER NAME = dakota.kincald	DESIGNED -	REVISED -	STATE OF ILLINOIS DEPARTMENT OF TRANSPORTATION	PLAN SHEET			F.A.P. RTE.	SECTION	COUNTY	TOTAL SHEETS	SHEET NO.
		DRAWN -	REVISED -					774	(107Z) RS-4	EFFINGHAM	24	10
		CHECKED -	REVISED -					CONTRACT NO. 74B61				
	PLOT DATE = 9/24/2025	DATE -	REVISED -		SCALE:	SHEET 2	OF 5	SHEETS	STA.	TO STA.	ILLINOIS FED. AID PROJECT	

MODEL: Plan Sheet 3 [Sheet]  
FILE NAME: c:\pw\work\illinois.gov\illinois.gov\dakota.kincaid\088184D774B61-sht-Plans.dgn



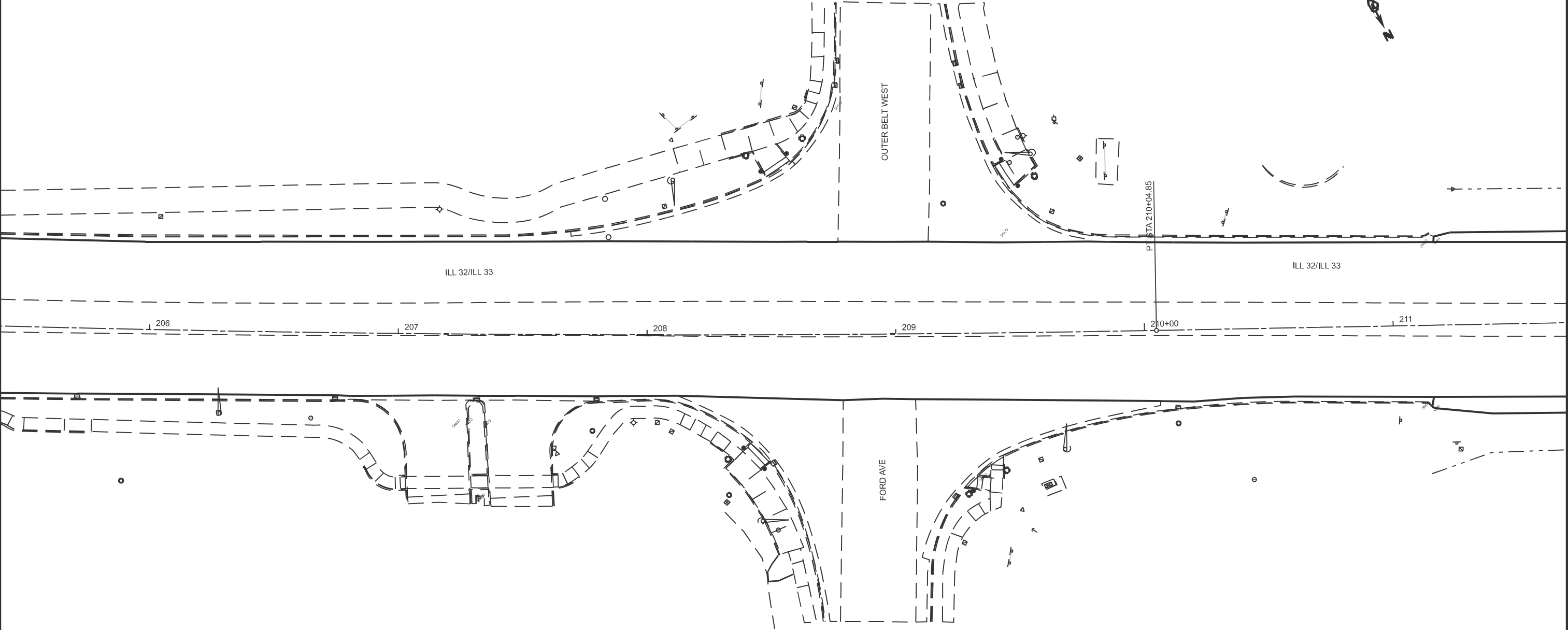
USER NAME	= dakota.kincaid	DESIGNED	-	REVISED	-
		DRAWN	-	REVISED	-
		CHECKED	-	REVISED	-
PLOT DATE	= 9/24/2025	DATE	-	REVISED	-

STATE OF ILLINOIS  
DEPARTMENT OF TRANSPORTATION

PLAN SHEET			
SCALE:	SHEET 3	OF 5 SHEETS	STA. TO STA.

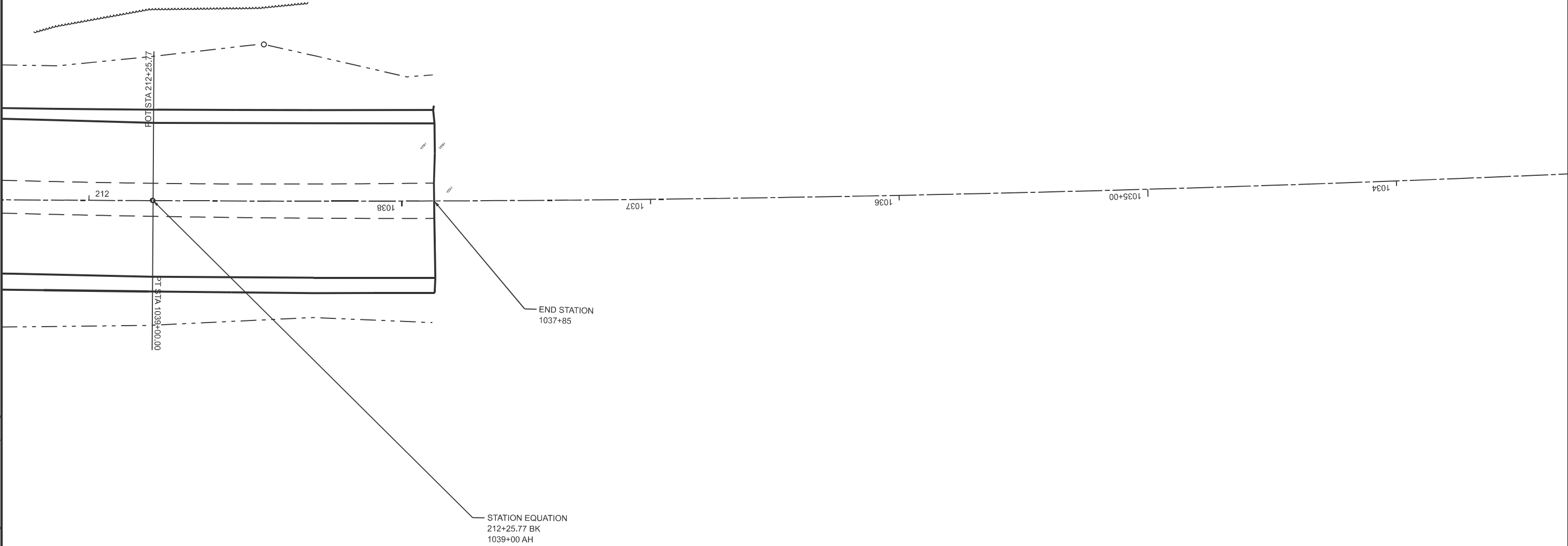
F.A.P. RTE.	SECTION	COUNTY	TOTAL SHEETS	SHEET NO.
774	(107Z) RS-4	EFFINGHAM	24	11
CONTRACT NO. 74B61				
ILLINOIS FED. AID PROJECT				

MODEL: Plan Sheet 4 [Sheet]  
FILE NAME: c:\pwwork\illinois.gov\_dakota.kincaid\illinois.gov\_dakota.kincaid\1088184D774B61-sht-Plans.dgn



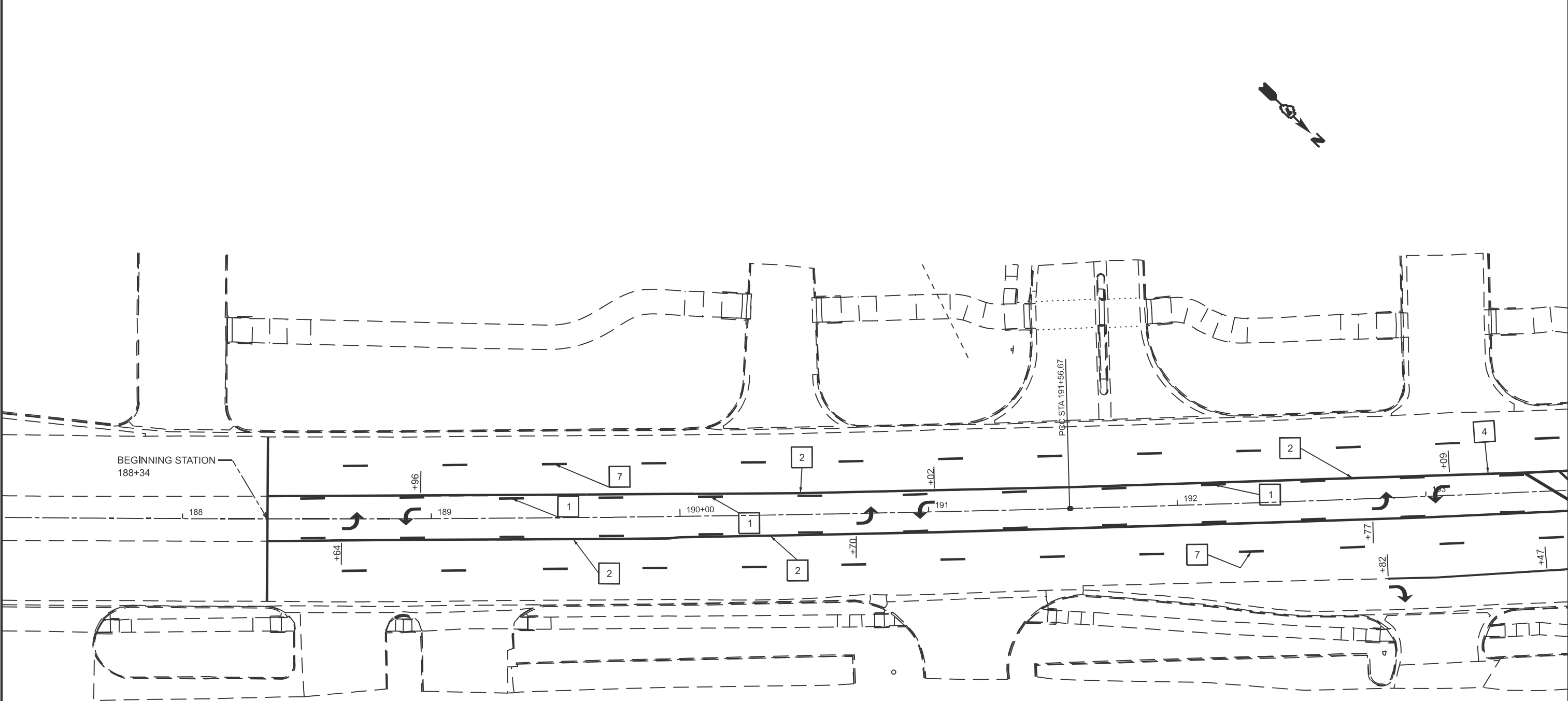
	USER NAME = dakota.kincaid	DESIGNED -	REVISED -	STATE OF ILLINOIS DEPARTMENT OF TRANSPORTATION	PLAN SHEET			F.A.P. RTE.	SECTION	COUNTY	TOTAL SHEETS	SHEET NO.
		DRAWN -	REVISED -					774	(107Z) RS-4	EFFINGHAM	24	12
		CHECKED -	REVISED -					CONTRACT NO. 74B61				
	PLOT DATE = 9/24/2025	DATE -	REVISED -		SCALE:	SHEET 4	OF 5	SHEETS	STA.	TO STA.	ILLINOIS	FED. AID PROJECT

MODEL: Plan Sheet 5 [Sheet]  
FILE NAME: c:\p\work\pilot\illinois.gov\_dakota.kincaid@illinois.gov\d1088184D774B61-sht-Hans.dgn



	USER NAME = dakota.kincaid	DESIGNED -	REVISED -	STATE OF ILLINOIS DEPARTMENT OF TRANSPORTATION	PLAN SHEET			F.A.P. RTE.	SECTION	COUNTY	TOTAL SHEETS	SHEET NO.
		DRAWN -	REVISED -					774	(107Z) RS-4	EFFINGHAM	24	13
		CHECKED -	REVISED -					CONTRACT NO. 74B61				
	PLOT DATE = 9/24/2025	DATE -	REVISED -		SCALE:	SHEET 5	OF 5 SHEETS	STA.	TO STA.	ILLINOIS FED. AID PROJECT		

MODEL: Pavement Marking Sheet 1 [Sheet]  
FILE NAME: c:\pwworking\illinois.gov\dakota.kincaid\088184D774B61-81H-pmk.dgn



PAVEMENT MARKING LEGEND

- |    |                                 |  |
|----|---------------------------------|--|
| 1  | 4" (100) SKIP-DASH (YELLOW)     |  |
| 2  | 4" (100) SOLID (YELLOW)         |  |
| 3  | 12" (300) DIAGONAL (YELLOW)     |  |
| 4  | 4" (100) DOUBLE YELLOW (NARROW) |  |
| 5  | 12" (300) SOLID (WHITE)         |  |
| 6  | 4" (100) DOUBLE YELLOW (WIDE)   |  |
| 7  | 6" (150) SKIP-DASH (WHITE)      |  |
| 8  | 4" (100) SOLID (WHITE)          |  |
| 9  | 12" (300) DIAGONAL (WHITE)      |  |
| 10 | 6" (150) SOLID (WHITE)          |  |
| 11 | 24" (600) STOP BAR (WHITE)      |  |
| 12 | 8" (200) SOLID (WHITE)          |  |
| 13 | 4" (100) PARKING (WHITE)        |  |

USER NAME	= dakota.kincaid
PLOT DATE	= 9/25/2025

DESIGNED	-
DRAWN	-
CHECKED	-
DATE	-

REVISED	-
REVISED	-
REVISED	-
REVISED	-

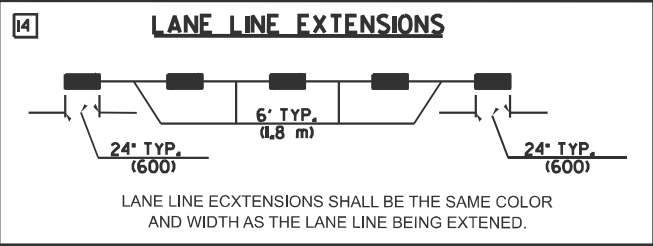
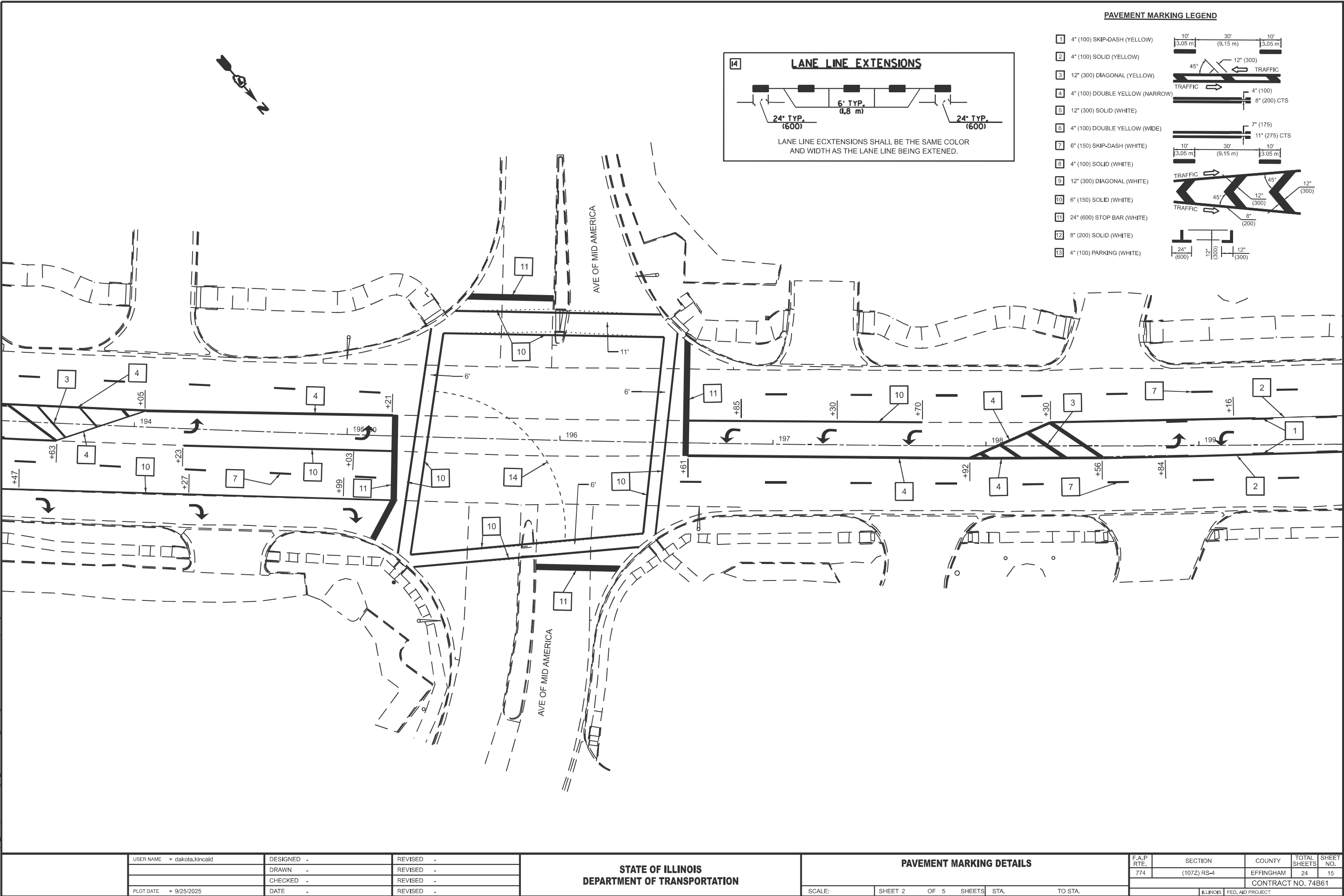
STATE OF ILLINOIS DEPARTMENT OF TRANSPORTATION
---

PAVEMENT MARKING DETAILS			
SCALE:	SHEET 1	OF 5	SHEETS
STA.	TO STA.		

F.A.P. RTE.	SECTION	COUNTY	TOTAL SHEETS	SHEET NO.
774	(107Z) RS-4	EFFINGHAM	24	14
CONTRACT NO. 74B61				
ILLINOIS FED. AID PROJECT				

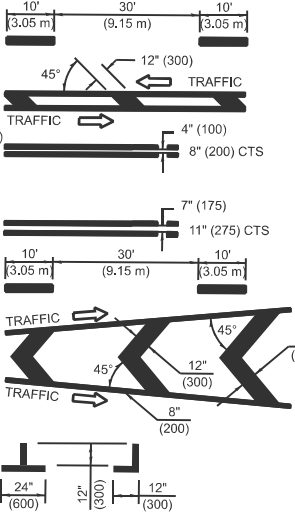


MODEL: Pavement Marking Sheet 2 (Sheet)  
FILE NAME: c:\pw\work\illinois\gov\id\088184\074B61-sht-hmk.dgn



**PAVEMENT MARKING LEGEND**

- 1 4" (100) SKIP-DASH (YELLOW)
- 2 4" (100) SOLID (YELLOW)
- 3 12" (300) DIAGONAL (YELLOW)
- 4 4" (100) DOUBLE YELLOW (NARROW)
- 5 12" (300) SOLID (WHITE)
- 6 4" (100) DOUBLE YELLOW (WIDE)
- 7 6" (150) SKIP-DASH (WHITE)
- 8 4" (100) SOLID (WHITE)
- 9 12" (300) DIAGONAL (WHITE)
- 10 6" (150) SOLID (WHITE)
- 11 24" (600) STOP BAR (WHITE)
- 12 8" (200) SOLID (WHITE)
- 13 4" (100) PARKING (WHITE)



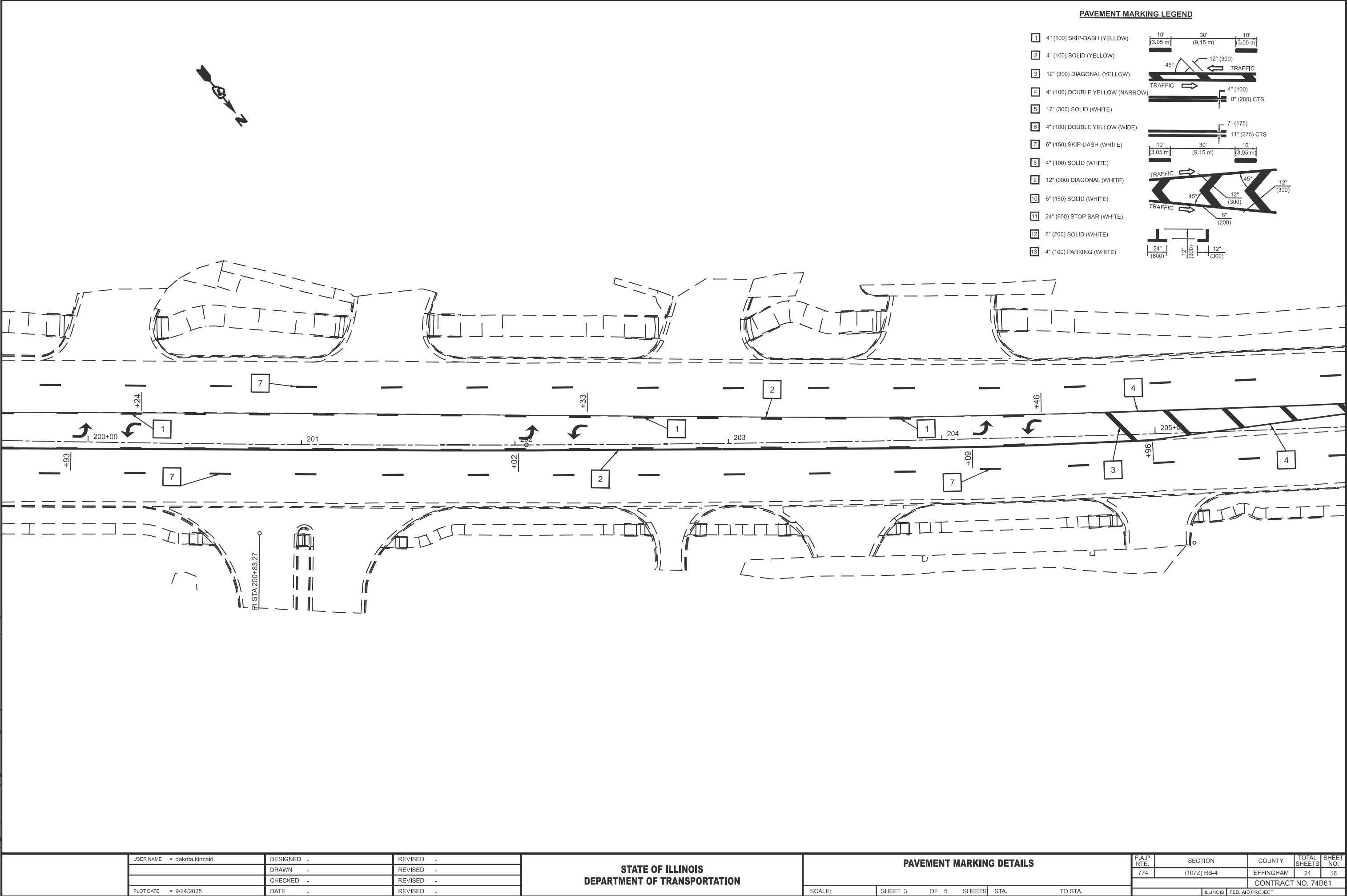
USER NAME	= dakota.kincaid	DESIGNED	-	REVISED	-
		DRAWN	-	REVISED	-
		CHECKED	-	REVISED	-
PLOT DATE	= 9/25/2025	DATE	-	REVISED	-

<b>STATE OF ILLINOIS</b> <b>DEPARTMENT OF TRANSPORTATION</b>
---

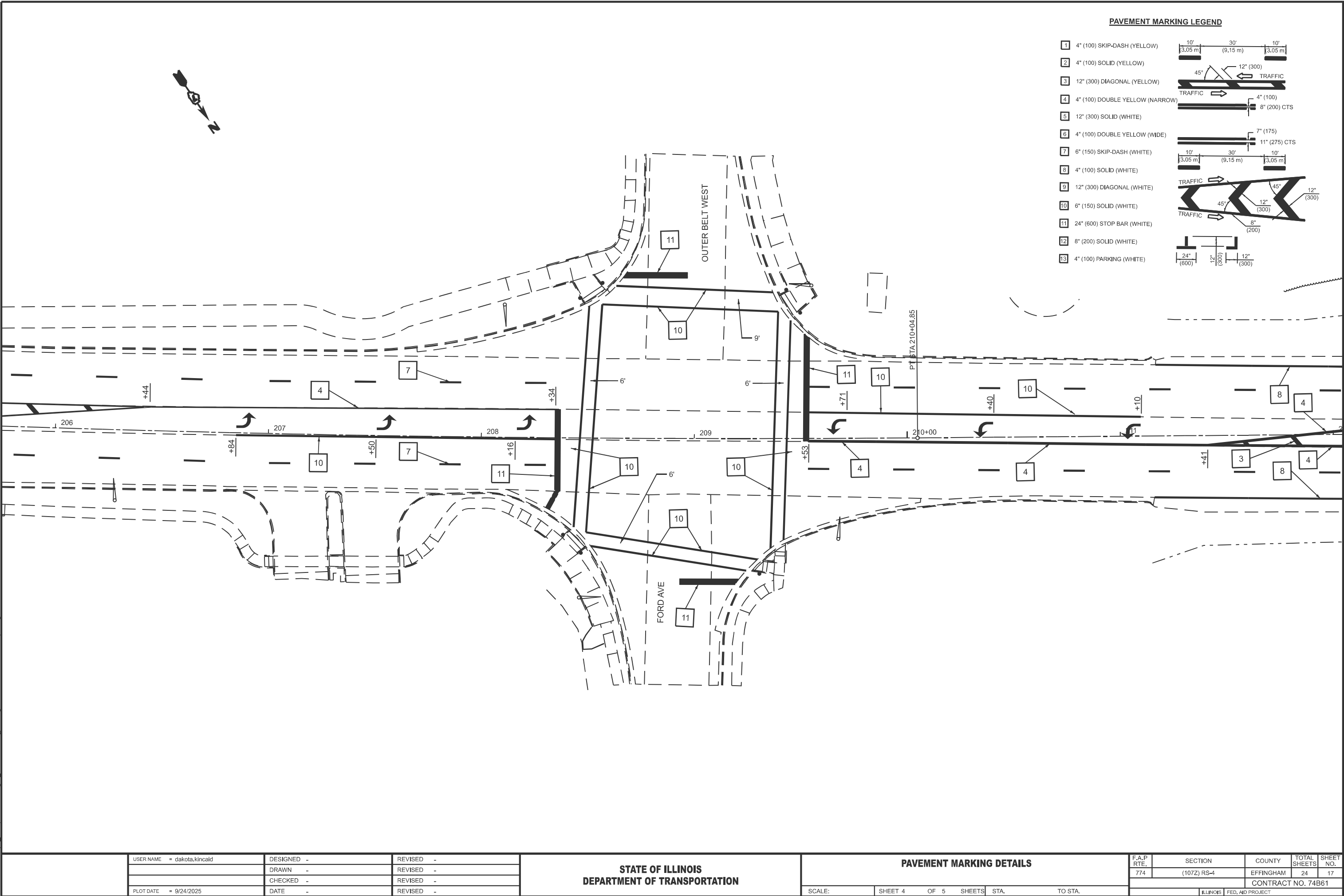
<b>PAVEMENT MARKING DETAILS</b>			
SCALE:	SHEET 2	OF 5	SHEETS
STA.		TO STA.	

F.A.P. RTE.	SECTION	COUNTY	TOTAL SHEETS	SHEET NO.
774	(107Z) RS-4	EFFINGHAM	24	15
CONTRACT NO. 74B61				
ILLINOIS FED. AID PROJECT				

MODEL: Pavement Marking Sheet 3 [Sheet]  
FILE NAME: c:\pw\work\illinois.gov\dakota.kincaid\088184D774B61-sht-hmk.dgn

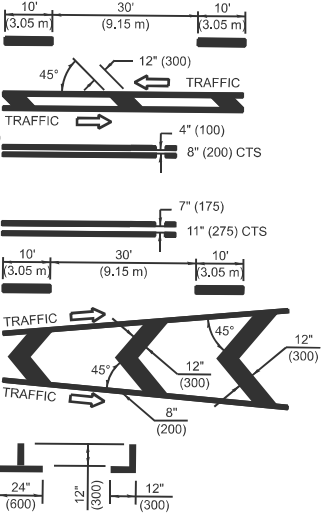


MODEL: Pavement Marking Sheet 4 [Sheet]  
FILE NAME: c:\pw\work\illinois.gov\dakota.kincaid\088184D774B61-sht-pmk.dgn



PAVEMENT MARKING LEGEND

- 1 4" (100) SKIP-DASH (YELLOW)
- 2 4" (100) SOLID (YELLOW)
- 3 12" (300) DIAGONAL (YELLOW)
- 4 4" (100) DOUBLE YELLOW (NARROW)
- 5 12" (300) SOLID (WHITE)
- 6 4" (100) DOUBLE YELLOW (WIDE)
- 7 6" (150) SKIP-DASH (WHITE)
- 8 4" (100) SOLID (WHITE)
- 9 12" (300) DIAGONAL (WHITE)
- 10 6" (150) SOLID (WHITE)
- 11 24" (600) STOP BAR (WHITE)
- 12 8" (200) SOLID (WHITE)
- 13 4" (100) PARKING (WHITE)



USER NAME	= dakota.kincaid	DESIGNED	-	REVISED	-
DRAWN	-	DRAWN	-	REVISED	-
CHECKED	-	CHECKED	-	REVISED	-
DATE	-	DATE	-	REVISED	-

STATE OF ILLINOIS  
DEPARTMENT OF TRANSPORTATION

PAVEMENT MARKING DETAILS			
SCALE:	SHEET 4	OF 5	SHEETS
STA.	TO STA.		

F.A.P. RTE.	SECTION	COUNTY	TOTAL SHEETS	SHEET NO.
774	(107Z) RS-4	EFFINGHAM	24	17
CONTRACT NO. 74B61				
ILLINOIS FED. AID PROJECT				

PAVEMENT MARKING LEGEND

- 1

4" (100) SKIP-DASH (YELLOW)

10'

30'

10'

3.05 m

9.15 m

3.05 m
- 2

4" (100) SOLID (YELLOW)

12" (300)
- 3

12" (300) DIAGONAL (YELLOW)

45°

TRAFFIC

TRAFFIC
- 4

4" (100) DOUBLE YELLOW (NARROW)

4" (100)

8" (200) CTS
- 5

12" (300) SOLID (WHITE)

7" (175)

11" (275) CTS
- 6

4" (100) DOUBLE YELLOW (WIDE)

10'

30'

10'

3.05 m

9.15 m

3.05 m
- 7

6" (150) SKIP-DASH (WHITE)

10'

30'

10'

3.05 m

9.15 m

3.05 m
- 8

4" (100) SOLID (WHITE)

12" (300)

45°

12" (300)

8" (200)
- 9

12" (300) DIAGONAL (WHITE)

45°

TRAFFIC

TRAFFIC
- 10

6" (150) SOLID (WHITE)

24" (600)
- 11

24" (600) STOP BAR (WHITE)

24" (600)

12" (300)

12" (300)
- 12

8" (200) SOLID (WHITE)

24" (600)

12" (300)

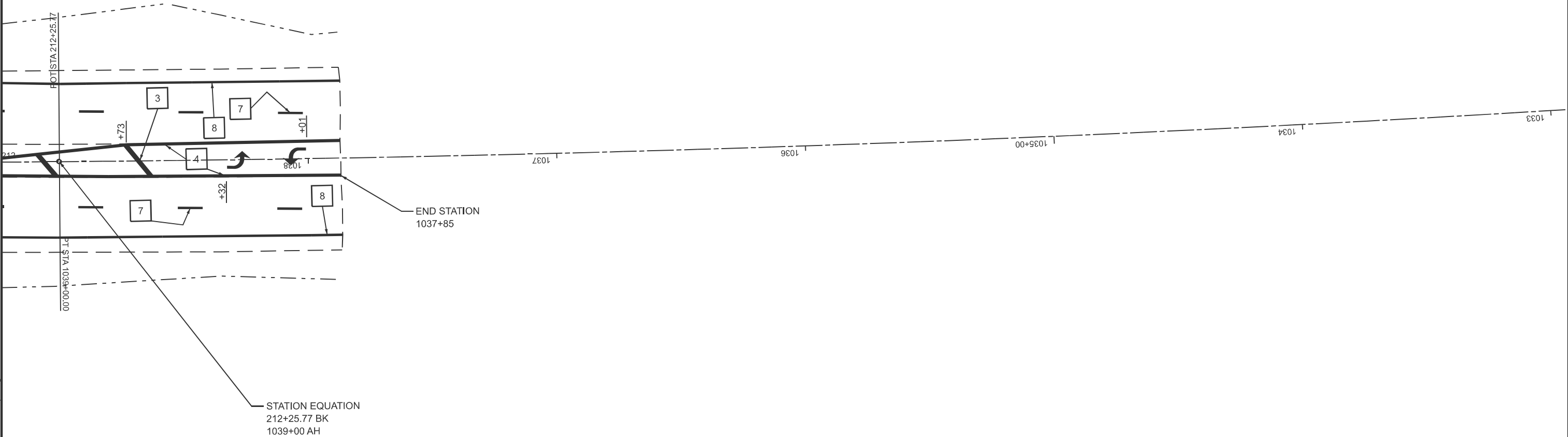
12" (300)
- 13

4" (100) PARKING (WHITE)

24" (600)

12" (300)

12" (300)



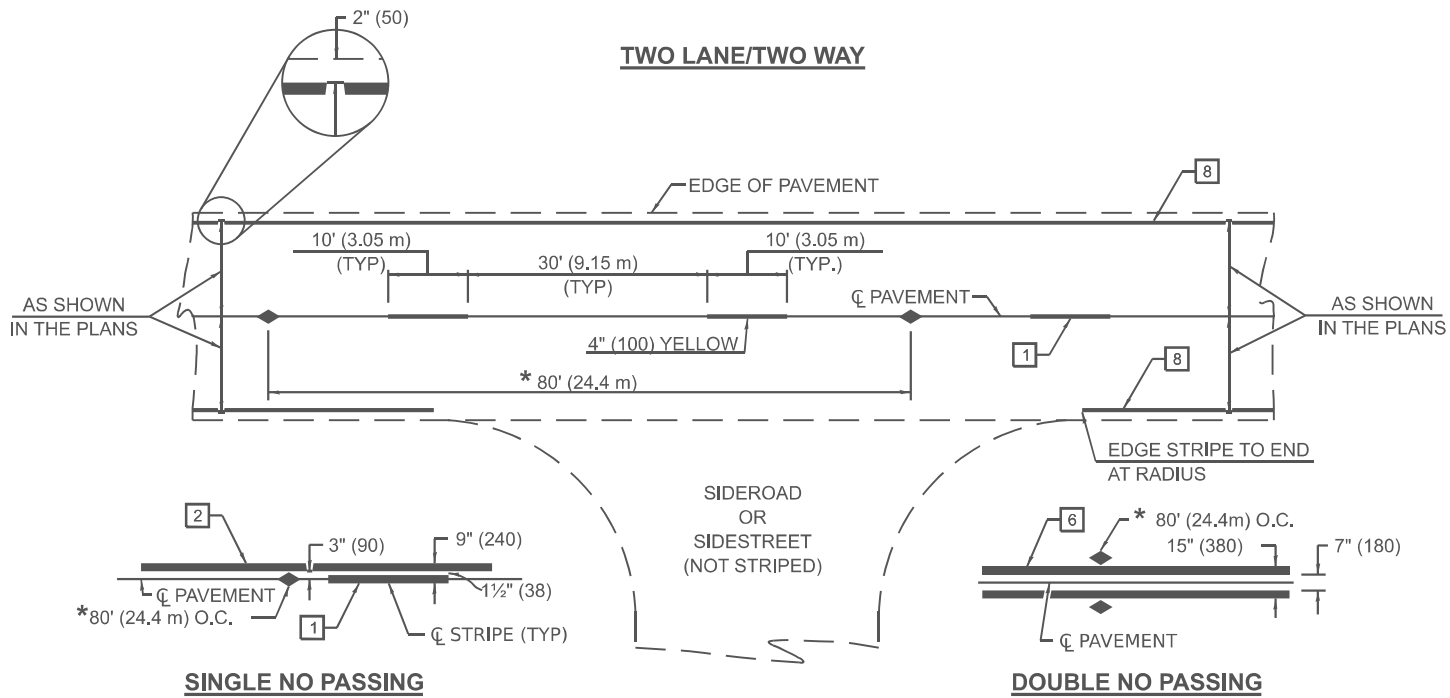
MODEL: Pavement Marking Sheet 5 [Sheet]  
FILE NAME: c:\pwworking\illinois.gov\dakota.kincaid\088184D74B61-sht-hmk.dgn

USER NAME	= dakota.kincaid	DESIGNED	-	REVISED	-
		DRAWN	-	REVISED	-
		CHECKED	-	REVISED	-
PLOT DATE	= 9/24/2025	DATE	-	REVISED	-

STATE OF ILLINOIS DEPARTMENT OF TRANSPORTATION
---

PAVEMENT MARKING DETAILS			
SCALE:	SHEET 5	OF 5	SHEETS
STA.	TO STA.		

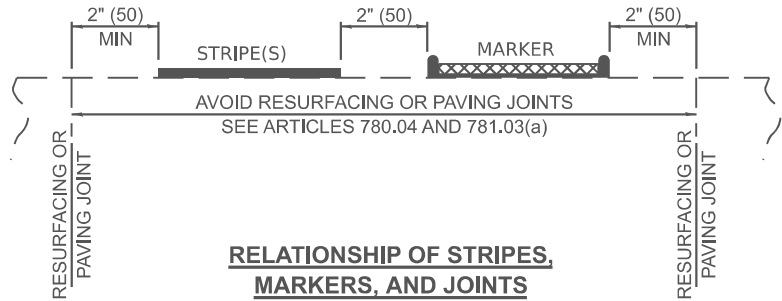
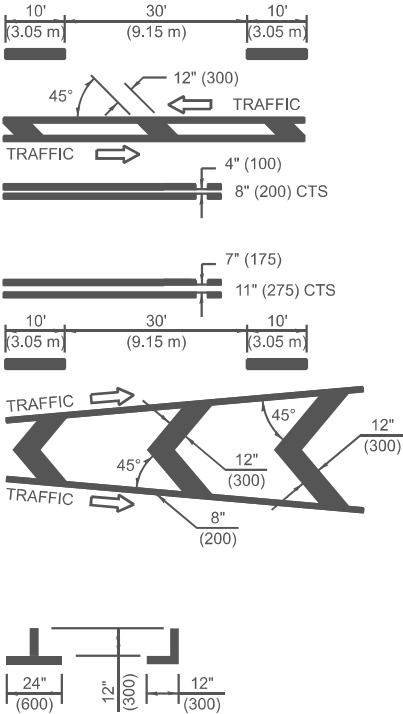
F.A.P. RTE.	SECTION	COUNTY	TOTAL SHEETS	SHEET NO.
774	(107Z) RS-4	EFFINGHAM	24	18
CONTRACT NO. 74B61				
ILLINOIS FED. AID PROJECT				



\* REDUCE TO 40' (12.2 m) O.C. ON CURVES WITH POSTED OR ADVISORY SPEEDS OF 45 MPH (70 km/h) OR LESS.

PAVEMENT MARKERS LEGEND

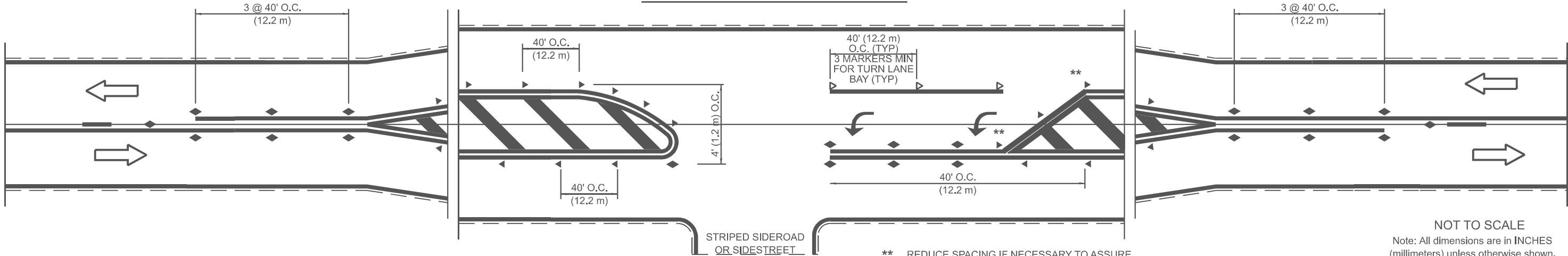
- 1 4" (100) SKIP-DASH (YELLOW)
- 2 4" (100) SOLID (YELLOW)
- 3 12" (300) DIAGONAL (YELLOW)
- 4 4" (100) DOUBLE YELLOW (NARROW)
- 5 12" (300) SOLID (WHITE)
- 6 4" (100) DOUBLE YELLOW (WIDE)
- 7 6" (150) SKIP-DASH (WHITE)
- 8 4" (100) SOLID (WHITE)
- 9 12" (300) DIAGONAL (WHITE)
- 10 6" (150) SOLID (WHITE)
- 11 24" (600) STOP BAR (WHITE)
- 12 8" (200) SOLID (WHITE)
- 13 4" (100) PARKING (WHITE)



TYPICAL PAVEMENT MARKERS LEGEND

- Two-way Amber Marker
- One-way Amber Marker
- One-way Crystal Marker

RAISED REFLECTIVE PAVEMENT MARKERS



\*\* REDUCE SPACING IF NECESSARY TO ASSURE MARKERS AT CORNER POINTS.

NOT TO SCALE  
Note: All dimensions are in INCHES (millimeters) unless otherwise shown.

DISTRICT 7 DETAIL NO. 78000001

USER NAME	= dakota.kincaid	DESIGNED	-	REVISED	-
		DRAWN	-	REVISED	-
		CHECKED	-	REVISED	-
PLOT DATE	= 9/24/2025	DATE	-	REVISED	-

STATE OF ILLINOIS  
DEPARTMENT OF TRANSPORTATION

STRIPING DETAILS

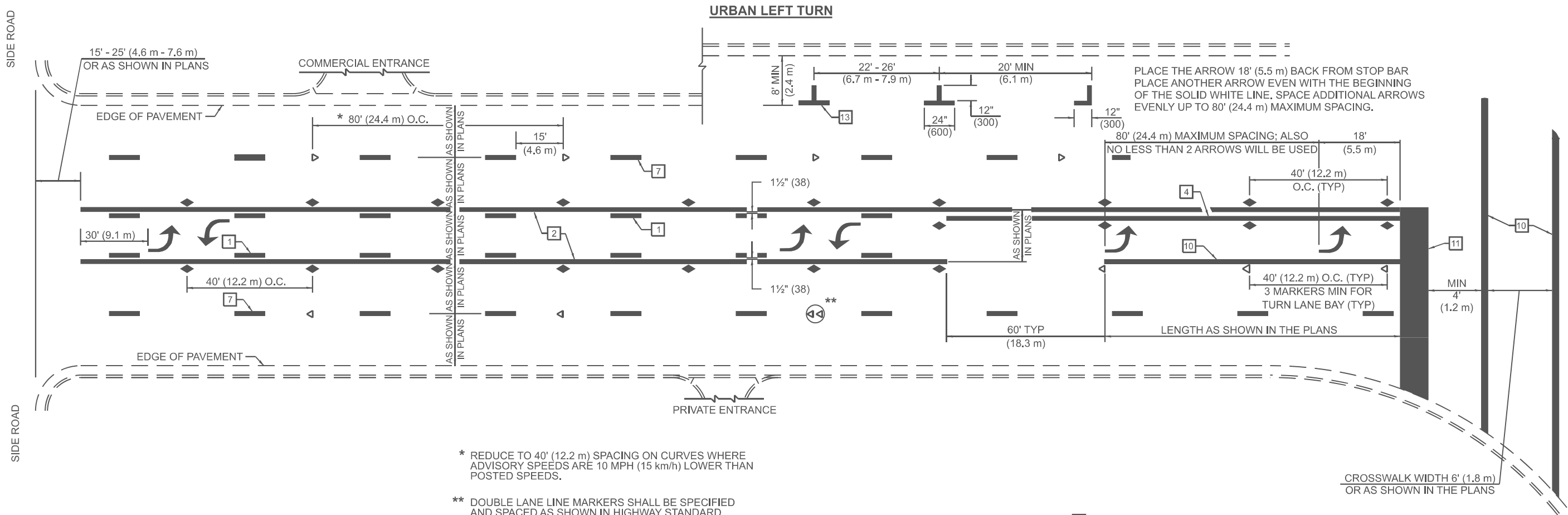
SCALE: SHEET 1 OF 6 SHEETS STA. TO STA.

F.A.P. RTE.	SECTION	COUNTY	TOTAL SHEETS	SHEET NO.
774	(107Z) RS-4	EFFINGHAM	24	19
CONTRACT NO. 74B61				
ILLINOIS FED. AID PROJECT				

MODEL: Striping Detail 1 [Sheet]  
FILE NAME: c:\pav\_work\pavdetail\illinois.gov\_dakota.kincaid\illinois.gov\_dakota.kincaid\1088184\DT74B61-sht-details.dgn

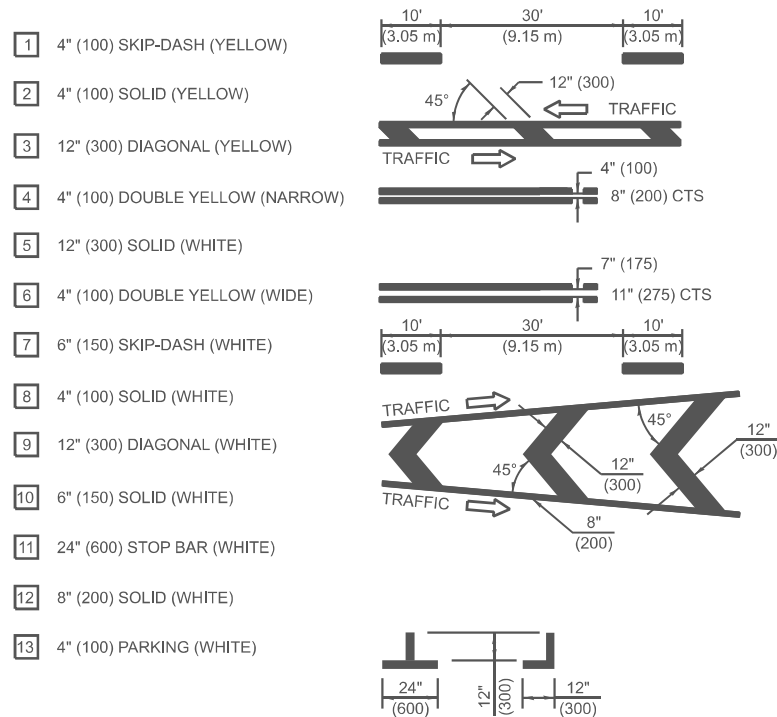


MODEL - Striping Detail 2 (Sheet)  
FILE NAME - c:\pav\_work\pavdetail\illinois.gov\_dakota.kincaid\088184D774B61-sht-details.dgn



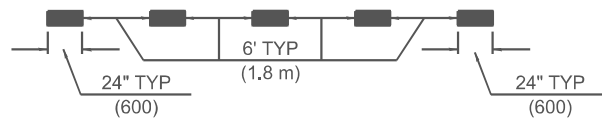
- \* REDUCE TO 40' (12.2 m) SPACING ON CURVES WHERE ADVISORY SPEEDS ARE 10 MPH (15 km/h) LOWER THAN POSTED SPEEDS.
- \*\* DOUBLE LANE LINE MARKERS SHALL BE SPECIFIED AND SPACED AS SHOWN IN HIGHWAY STANDARD 781001 FOR MULTI-LANE DIVIDED AND UNDIVIDED HIGHWAYS.

#### PAVEMENT MARKING LEGEND

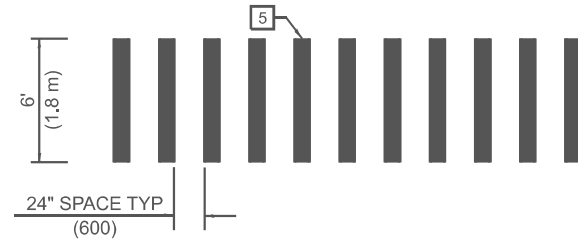


#### GENERAL NOTES

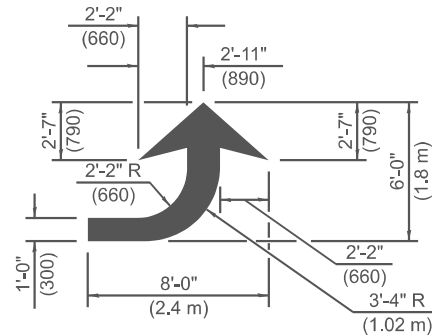
- TURN ARROW PAIRS SHALL BE PLACED AT 250' (75 m) INTERVALS AND SHALL BE EVENLY SPACED BETWEEN BOTH ENDS OF THE BIDIRECTIONAL LEFT TURN LANE. USE A MINIMUM OF TWO PAIRS PER BLOCK.
- THE SOLID YELLOW PAVEMENT MARKING [2] SHOULD GENERALLY START OR END NEAR THE RADIUS POINT OF EACH STREET RETURN EXCEPT WHERE ONE OR BOTH ENDS WOULD INCLUDE STOP BARS.
- THE SKIP-DASH PAVEMENT MARKING [1] OR [7] SHOULD BE CENTERED BETWEEN BOTH ENDS OF EACH CITY BLOCK AND SHALL BE PLACED SO THEY LINE UP ACROSS FROM EACH OTHER.
- USE LARGE ARROW SIZE FOR BOTH RURAL AND URBAN LOCATIONS. (SEE SECTION 780 FOR SYMBOLS TABLE)
- LANE LINE EXTENSIONS SHALL BE THE SAME COLOR AND WIDTH AS THE LANE LINE BEING EXTENDED.
- ALL WHITE SKIP-DASH LINES SHALL BE 6" IN WIDTH.



#### LANE LINE EXTENSIONS

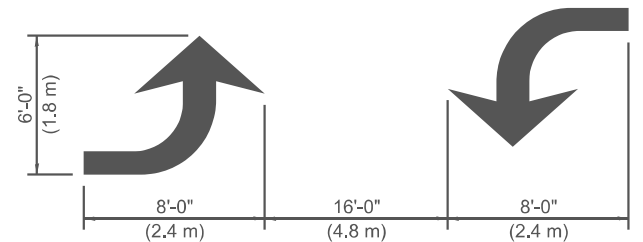


#### CROSSWALK DETAIL (DECATUR CITY LIMITS ONLY)



#### LEFT ARROW

REVERSE FOR RIGHT ARROW  
AREA = 15.6 SQ.FT. (1.47 m²)  
(WHITE)



#### TYPICAL DOUBLE TURN ARROWS (WHITE)

NOT TO SCALE

Note: All dimensions are in INCHES  
(millimeters) unless otherwise shown.

#### DISTRICT 7 DETAIL NO. 78000001

USER NAME = dakota.kincaid	DESIGNED -	REVISED -
	DRAWN -	REVISED -
	CHECKED -	REVISED -
PLOT DATE = 9/24/2025	DATE -	REVISED -

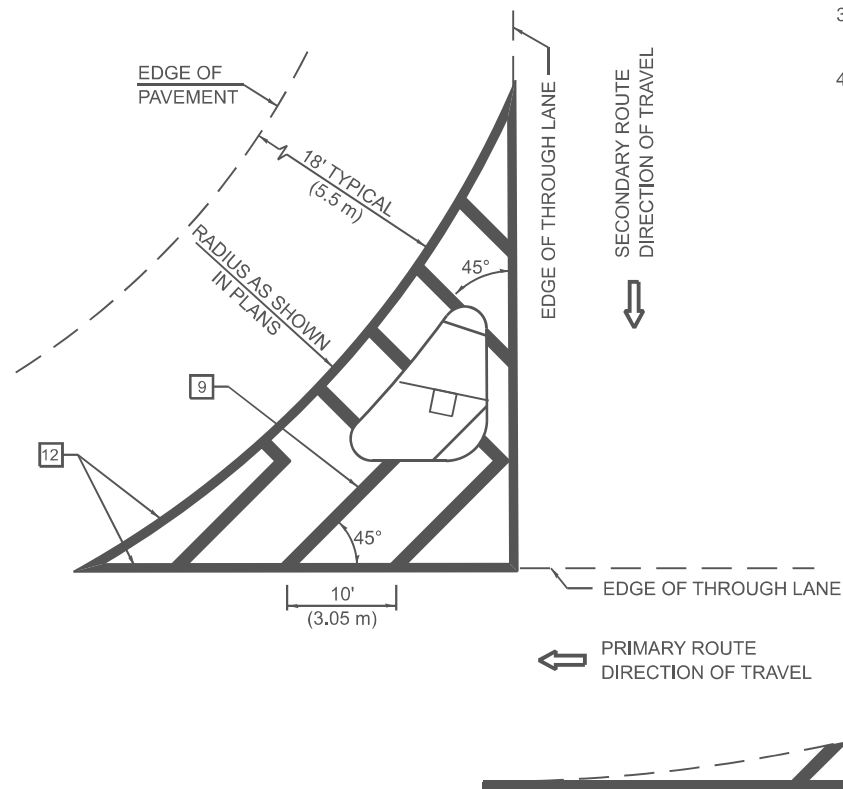
STATE OF ILLINOIS  
DEPARTMENT OF TRANSPORTATION

#### STRIPING DETAILS

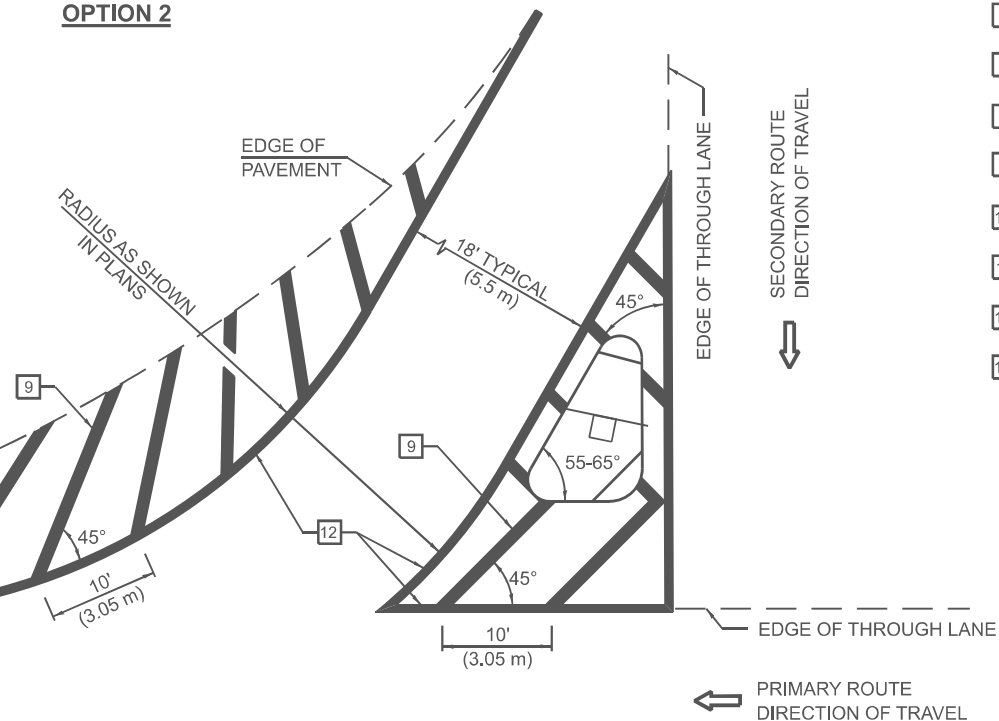
SCALE: SHEET 2 OF 6 SHEETS STA. TO STA.

F.A.P. RTE.	SECTION	COUNTY	TOTAL SHEETS	SHEET NO.
774	(107Z) RS-4	EFFINGHAM	24	20
CONTRACT NO. 74B61				
ILLINOIS FED. AID PROJECT				

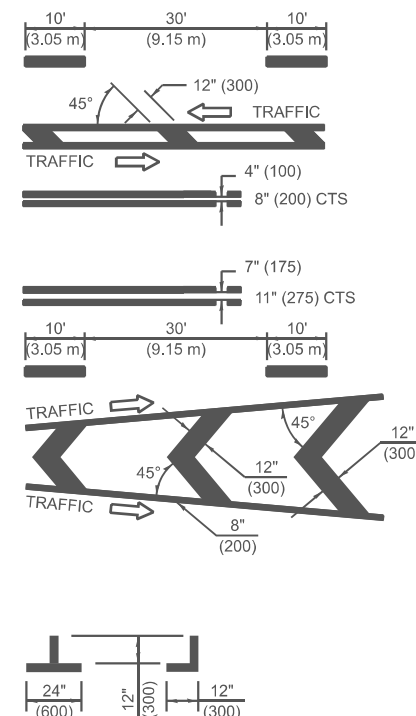
### OPTION 1



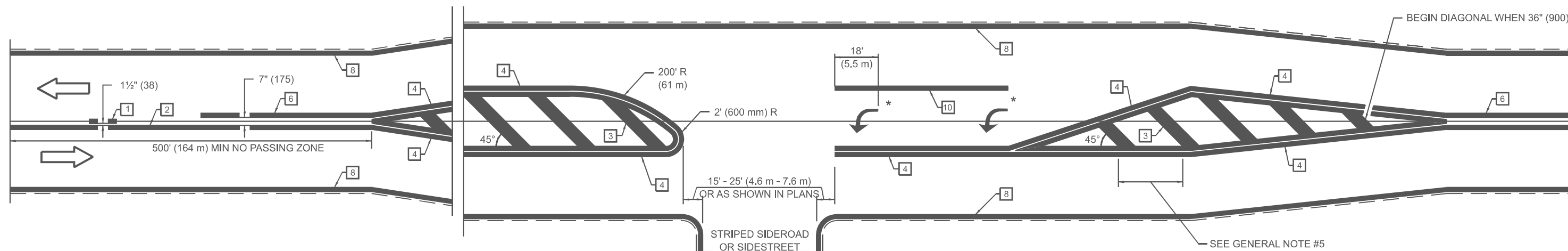
### OPTION 2



1	4" (100) SKIP-DASH (YELLOW)
2	4" (100) SOLID (YELLOW)
3	12" (300) DIAGONAL (YELLOW)
4	4" (100) DOUBLE YELLOW (NARROW)
5	12" (300) SOLID (WHITE)
6	4" (100) DOUBLE YELLOW (WIDE)
6	6" (150) SKIP-DASH (WHITE)
8	4" (100) SOLID (WHITE)
9	12" (300) DIAGONAL (WHITE)
10	6" (150) SOLID (WHITE)
11	24" (600) STOP BAR (WHITE)
12	8" (200) SOLID (WHITE)
13	4" (100) PARKING (WHITE)



## RURAL LEFT TURN STRIPING



\* PLACE AN ARROW 18' (5.5 m) BACK FROM END OF THE SOLID WHITE LINE. PLACE ANOTHER ARROW EVEN WITH THE BEGINNING OF THE SOLID WHITE LINE. SPACE ADDITIONAL ARROWS EVENLY UP TO 80' (24.4 m) MAXIMUM SPACING. USE MINIMUM OF 2 ARROWS.

NOT TO SCALE

Note: All dimensions are in INCHES  
(millimeters) unless otherwise shown.

## DISTRICT 7 DETAIL NO. 78000001

F.A.P RTE.	SECTION	COUNTY	TOTAL SHEETS	SHEET NO.
774	(107Z) RS-4	EFFINGHAM	24	21
		CONTRACT NO. 74B61		
		ILLINOIS	FED. AID PROJECT	

**STATE OF ILLINOIS**  
**DEPARTMENT OF TRANSPORTATION**

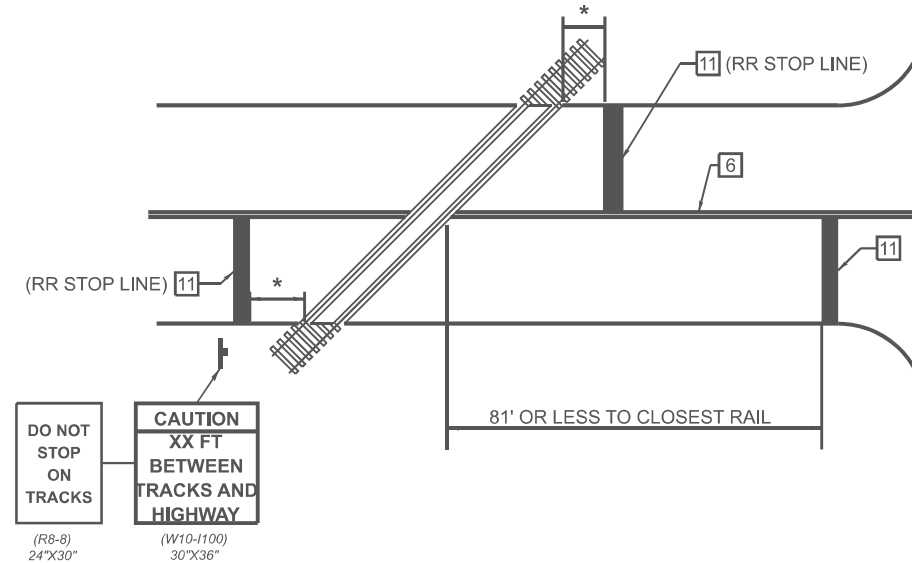
## STRIPING DETAILS

SCALE:	SHEET 3	OF 6	SHEETS	STA.	TO STA.
--------	---------	------	--------	------	---------

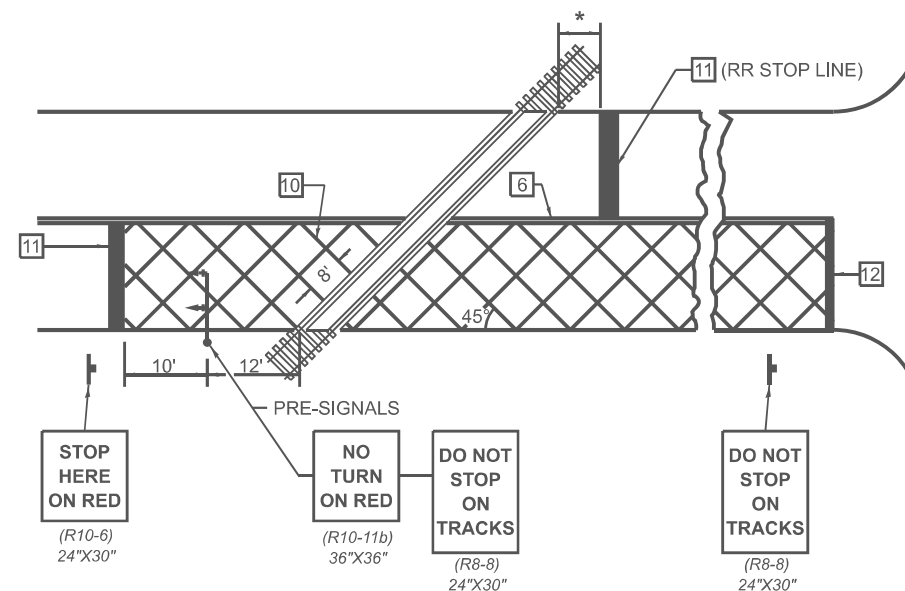
MODEL: Striping Detail 3 [Sheet]  
FILE NAME: c:\pw\work\pwidth\illinois.gov dakota.kincaid@illinois.gov 1088184ID774B61-sht-d-etails.dgn

### PAVEMENT MARKING LEGEND

### RAILROAD CROSSING WITH NON-SIGNALIZED INTERSECTION



## RAILROAD CROSSING WITH INTERCONNECT AND PRE-SIGNALS



- 
- The figure illustrates three typical cross-sections of a highway bridge deck, showing dimensions in feet (ft) and meters (m), and traffic flow directions.
- Top Section (Single-Span Bridge):**
    - Overall width: 30' (9.15 m)
    - Side lanes: 10' (3.05 m) each
    - Deck thickness: 12" (300)
    - Traffic flow: Indicated by arrows pointing towards the center.
  - Middle Section (Continuous Bridge):**
    - Overall width: 30' (9.15 m)
    - Side lanes: 10' (3.05 m) each
    - Deck thickness: 12" (300)
    - Central pier: 4" (100) wide
    - Traffic flow: Indicated by arrows pointing towards the center.
  - Bottom Section (Bridge with Central Pier):**
    - Overall width: 30' (9.15 m)
    - Side lanes: 10' (3.05 m) each
    - Deck thickness: 12" (300)
    - Central pier: 8" (200) wide
    - Traffic flow: Indicated by arrows pointing towards the center.

1. SUPPLEMENTAL PAVEMENT MARKINGS TO BE INSTALLED ON APPROACHES TO INTERSECTIONS CONTROLLED BY TRAFFIC SIGNALS WHICH ARE INTERCONNECTED WITH THE RAILROAD WARNING SIGNALS.
2. EXTEND PAVEMENT MARKINGS TO THE INTERSECTION ONLY WHERE PRE-SIGNALS ARE USED.
3. WHEN PEDESTRIAN SIGNALS ARE PRESENT WITH INTERCONNECTED SIGNALS, WARNING SIGN W10-1101 (18"x24") SHALL BE PLACED NEAR EACH PEDESTRIAN SIGNAL HEAD. COUNTDOWN PEDESTRIAN SIGNAL HEADS SHALL NOT BE UTILIZED ALONG WITH INTERCONNECTED SIGNALS.

**CAUTION**

**WALK TIME  
SHORTENED  
WHEN TRAIN  
APPROACHES**

*(W10-1101  
18"x24")*
4. PLEASE REFER TO THE IDOT BUREAU OF OPERATION MEMO OPS T-06 DATED DECEMBER 1, 2020 FOR ADDITIONAL INFORMATION.

**CAUTION**

**WALK TIME  
SHORTENED  
WHEN TRAIN  
APPROACHES**

*(W10-I101)  
18"X24"*

- \* 15' FROM NEAR RAIL OR 8' FROM AND PARALLEL TO GATE IF PRESENT
- \*\* WARNING SIGN W10-1100 SHALL BE USED AS AN INTERIM MEASURE AT INTERCONNECTED SIGNAL LOCATIONS WHERE PRE-SIGNALS ARE TO BE INSTALLED IN THE FUTURE. THIS SIGN SHALL BE REMOVED WHEN THE PRE-SIGNALS ARE INSTALLED AND THE PAVEMENT MARKINGS ARE EXTENDED TO THE INTERSECTION.

NOT TO SCALE

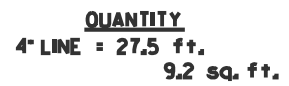
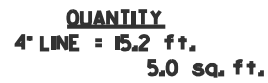
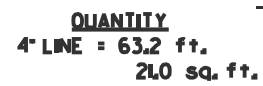
Note: All dimensions are in INCHES  
(millimeters) unless otherwise shown.

**STATE OF ILLINOIS**  
**DEPARTMENT OF TRANSPORTATION**

SCALE:	SHEET 4	OF 6	SHEETS	STA.	TO STA.
--------	---------	------	--------	------	---------

F.A.P RTE.	SECTION	COUNTY	TOTAL SHEETS	SHEET NO.
774	(107Z) RS-4	EFFINGHAM	24	22
		CONTRACT NO. 74B61		
		ILLINOIS FED. AID PROJECT		

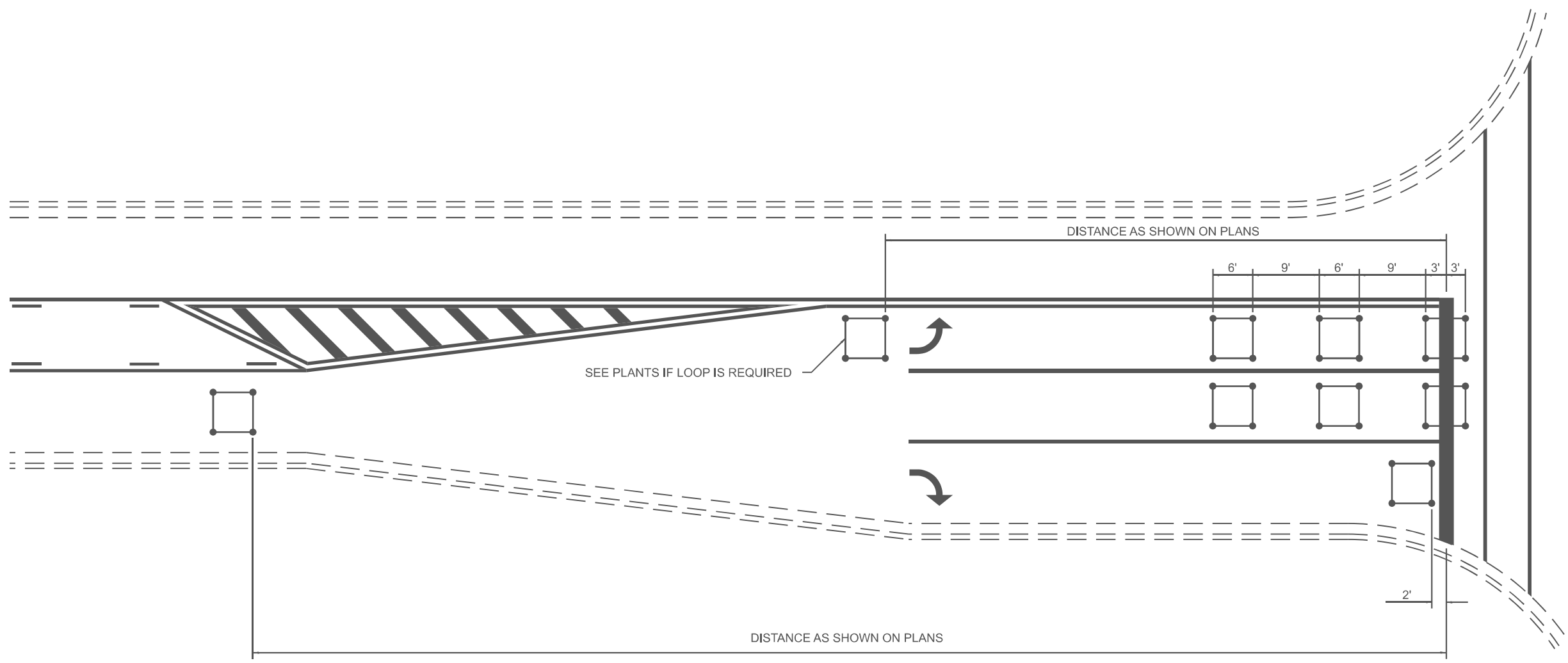
MODEL: Striping Detail 4 [Sheet]  
FILE NAME: c:\pw\work\pwidot\illinois.gov\_dakota.kincaid@illinois.gov\d1088184\D774B61-sht-details.dgn



**STATE OF ILLINOIS**  
**DEPARTMENT OF TRANSPORTATION**

F.A.P RTE.	SECTION	COUNTY	TOTAL SHEETS	SHEET NO.
774	(107Z) RS-4	EFFINGHAM	24	23
		CONTRACT NO. 74B61		
ILLINOIS		FED. AID PROJECT		

TYPICAL APPLICATION OF DETECTOR LOOPS



- NOTE:
- 1. EACH LOOP SHALL HAVE ITS OWN HOMERUN TO THE GULFBOX/HANDHOLE.
  - 2. LOOPS SHOULD BE CENTERED IN EACH LANE.
  - 3. USE 6' BY 6' LOOPS FOR LANE WIDTHS OF 11' OR GREATER.
  - 4. USE 5' BY 5' LOOPS IF LANE WIDTH IS LESS THAN 11'.

NOT TO SCALE

DISTRICT 7 DETAIL NO. 88600100

	USER NAME = dakota.kincaid	DESIGNED -	REVISED -	STATE OF ILLINOIS DEPARTMENT OF TRANSPORTATION	STRIPING DETAIL			F.A.P. RTE.	SECTION	COUNTY	TOTAL SHEETS	SHEET NO.
		DRAWN -	REVISED -					774	(107Z) RS-4	EFFINGHAM	24	24
		CHECKED -	REVISED -					CONTRACT NO. 74B61				
	PLOT DATE = 9/24/2025	DATE -	REVISED -		SCALE:	SHEET 6	OF 6 SHEETS	STA.	TO STA.	ILLINOIS FED. AID PROJECT		