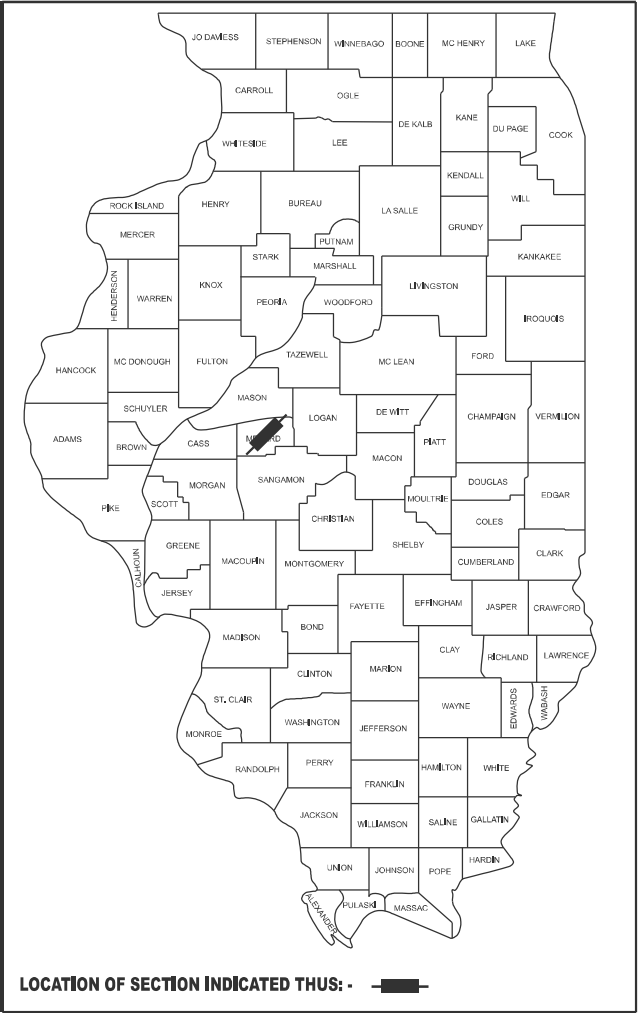


STATE OF ILLINOIS  
DEPARTMENT OF TRANSPORTATION

F.A.P. RTE.	SECTION	COUNTY	TOTAL SHEETS	SHEET NO.
737	(1B-2)BJR,BDR,BRR	MENARD	12	1
		ILLINOIS	CONTRACT NO. 72F57	

D-96-075-12



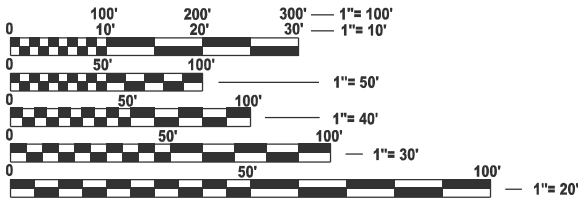
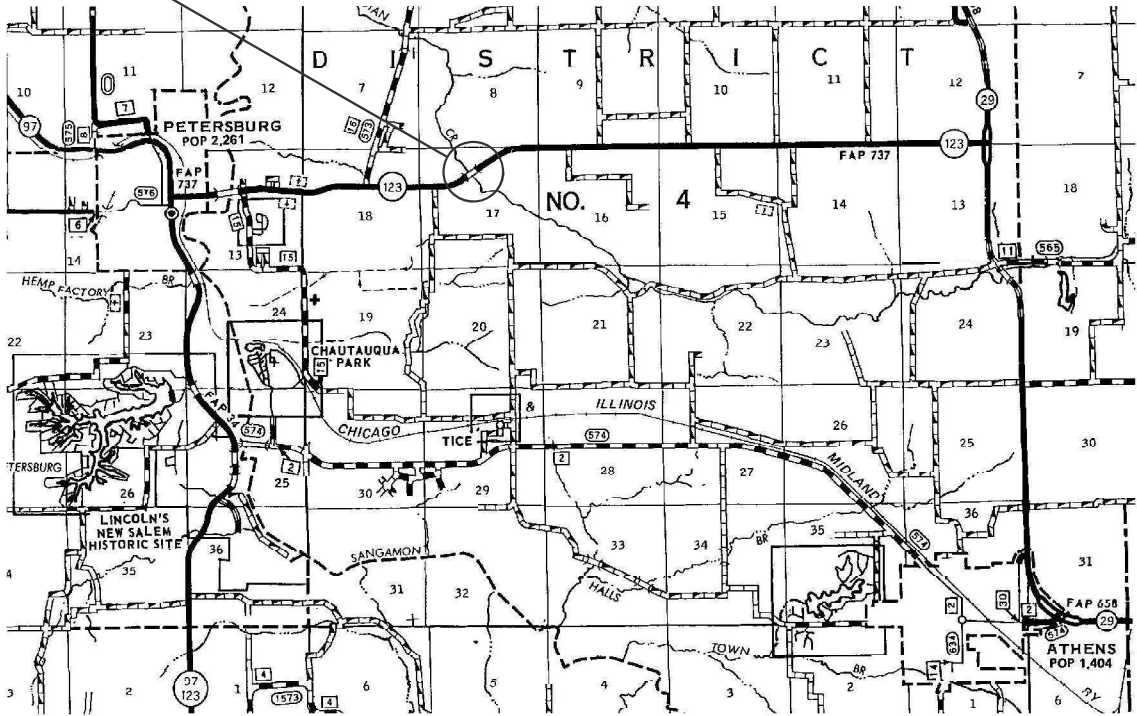
FOR INDEX OF SHEETS, SEE SHEET NO. 2

PROPOSED  
HIGHWAY PLANS

FAP ROUTE 737 (IL 123)  
SECTION (1B-2)BJR,BDR,BRR  
PROJECT (STATE ONLY)  
BRIDGE JOINT REMOVAL  
MENARD COUNTY  
C-96-075-12



PROJECT LOCATION:  
SN 065-0018  
IL 123 OVER  
INDIAN CREEK  
2.5 MI E IL 97



FULL SIZE PLANS HAVE BEEN PREPARED USING STANDARD  
ENGINEERING SCALES. REDUCED SIZED PLANS WILL NOT  
CONFORM TO STANDARD SCALES. IN MAKING MEASUREMENTS  
ON REDUCED PLANS, THE ABOVE SCALES MAY BE USED.

J.U.L.I.E.  
JOINT UTILITY LOCATION INFORMATION FOR EXCAVATION  
1-800-892-0123  
OR 811

PROJECT ENGINEER: BRANDON DUDLEY - (217) 785-9290  
PROJECT MANAGER

CONTRACT NO. 72F57

GROSS LENGTH = 80 FT. = 0.01 MILE  
NET LENGTH = 80 FT. = 0.01 MILE

STATE OF ILLINOIS  
DEPARTMENT OF TRANSPORTATION

SUBMITTED August 14<sup>th</sup> 20<sup>th</sup> 25  
*Teresa C. Price*  
REGIONAL ENGINEER

October 3<sup>rd</sup> 20<sup>th</sup> 25  
*See E. A. Etk*  
ENGINEER OF DESIGN AND ENVIRONMENT

October 3<sup>rd</sup> 20<sup>th</sup> 25  
*John J. Murphy*  
DIRECTOR OF HIGHWAYS PROJECT IMPLEMENTATION

PRINTED BY THE AUTHORITY  
OF THE STATE OF ILLINOIS

INDEX OF SHEETS

- 1 COVER SHEET
- 2 INDEX, STANDARDS, GENERAL NOTES, & SIGNATURES
- 3-4 SUMMARY OF QUANTITIES
- 5-7 TRAFFIC CONTROL PLAN
- 8-12 BRIDGE PLANS, SN 065-0018

HIGHWAY STANDARDS

- 000001-09
- 001001-02
- 001006
- 701001-02
- 701006-05
- 701201-05
- 701301-04
- 701321-19
- 701901-11
- 704001-08
- 782006-01

GENERAL NOTES:

STATE OF ILLINOIS  
DEPARTMENT OF TRANSPORTATION  
DIVISION OF HIGHWAYS  
DISTRICT 6

EXAMINED

August 14,

20

25

LEON C. PRUE

ENGINEER OF OPERATIONS

EXAMINED

August 14,

20

25

LEON C. PRUE

ENGINEER OF PROJECT IMPLEMENTATION

EXAMINED

August 13,

20

25

M. V.

ENGINEER OF PROGRAM DEVELOPMENT

REV - MS

MODEL: index (Sheet)  
FILE NAME: c:\pw\work\pvt\td\duley\mtd112335172F57 plansheet.dgn

	USER NAME = brandon.dudley	DESIGNED -	REVISED -	STATE OF ILLINOIS DEPARTMENT OF TRANSPORTATION	INDEX OF SHEETS, HIGHWAY STANDARDS, GENERAL NOTES, & SIGNATURES	F.A.P RTE	SECTION	COUNTY	TOTAL SHEETS	SHEET NO.
		DRAWN -	REVISED -			737	(1B-2)BJR,BDR,BRR	MENARD	12	2
		CHECKED -	REVISED -			CONTRACT NO. 72F57				
	PLOT DATE = 6/4/2025	DATE -	REVISED -			ILLINOIS   FED. AID PROJECT				
				SCALE:	SHEET 1 OF 1 SHEETS	STA.	TO STA.			

MODEL: SOQ [Sheet]  
FILE NAME: c:\pw\_work\pwid\duley\bmid112335\72F57 plansheet.dgn

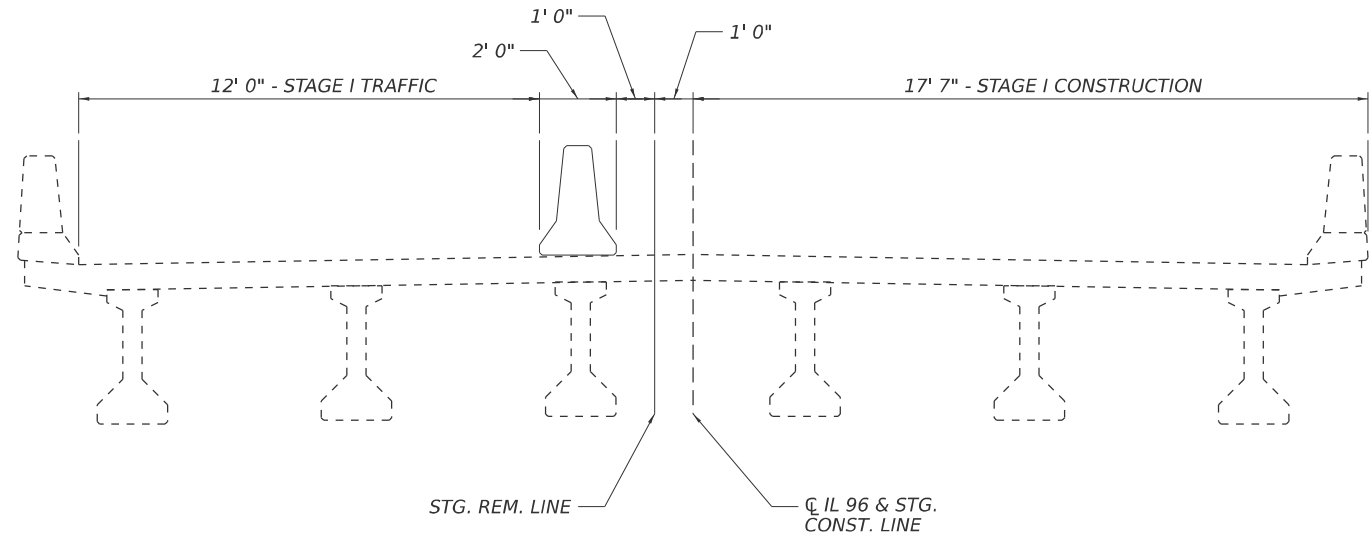
				0-02180-6013
				SN 065-0018
				100% STATE
CODE NO.	ITEM	UNIT	TOTAL QUANTITY	BRIDGE
				0047-RURAL MENARD
50102400	CONCRETE REMOVAL	CU YD	29.0	29.0
50300255	CONCRETE SUPERSTRUCTURE	CU YD	38.5	38.5
50300300	PROTECTIVE COAT	SQ YD	75	75
50800205	REINFORCEMENT BARS, EPOXY COATED	POUND	4260	4260
50800515	BAR SPLICERS	EACH	58	58
63302700	REMOVE AND REERECT TRAFFIC BARRIER TERMINALS, TYPE 6	EACH	4	4
67100100	MOBILIZATION	L SUM	1	1
70100405	TRAFFIC CONTROL AND PROTECTION, STANDARD 701321	EACH	1	1
70100450	TRAFFIC CONTROL AND PROTECTION, STANDARD 701201	L SUM	1	1
70106500	TEMPORARY BRIDGE TRAFFIC SIGNALS	EACH	1	1
70106700	TEMPORARY RUMBLE STRIPS	EACH	6	6
70107005	PAVEMENT MARKING BLACKOUT TAPE, 5"	FOOT	1400	1400
70107025	CHANGEABLE MESSAGE SIGN	CAL DAY	135	135
70300150	SHORT TERM PAVEMENT MARKING REMOVAL	SQ FT	583	583

REV - MS

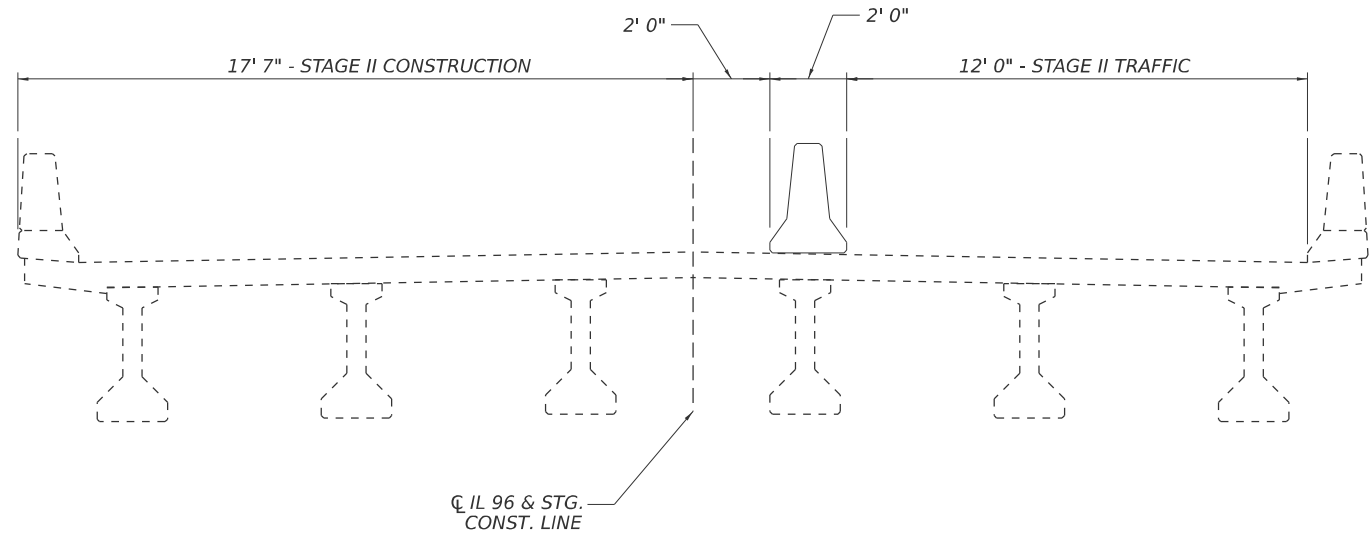
	USER NAME = brandon.dudley	DESIGNED -	REVISED -	STATE OF ILLINOIS DEPARTMENT OF TRANSPORTATION	SUMMARY OF QUANTITIES					F.A.P RTE.	SECTION	COUNTY	TOTAL SHEETS	SHEET NO.
		DRAWN -	REVISED -		737	(1B-2)BJR,BDR,BRR		MENARD	12	3				
		CHECKED -	REVISED -							CONTRACT NO. 72F57				
	PLOT DATE = 6/4/2025	DATE -	REVISED -		SCALE:	SHEET 1	OF 2	SHEETS	STA.	TO STA.				

MODEL: SQC-1 [Sheet]  
FILE NAME: c:\pw\_work\pwitoldudley\cml112335712F57 plansheet.dgn

				0-02180-6013
				SN 065-0018
				100% STATE
				BRIDGE
				0047-RURAL
				MENARD
70400100	TEMPORARY CONCRETE BARRIER	FOOT	375	375
70400200	RELOCATE TEMPORARY CONCRETE BARRIER	FOOT	375	375
70600260	IMPACT ATTENUATORS, TEMPORARY (FULLY REDIRECTIVE, NARROW), TEST LEVEL 3	EACH	4	4
70600332	IMPACT ATTENUATORS, RELOCATE (FULLY REDIRECTIVE, NARROW), TEST LEVEL 3	EACH	4	4
X7200201	WIDTH RESTRICTION SIGNING	L SUM	1	1
Z0001800	APPROACH SLAB REPAIR (PARTIAL DEPTH)	SQ YD	22	22
Z0012754	STRUCTURAL REPAIR OF CONCRETE (DEPTH EQUAL TO OR LESS THAN 5 INCHES)	SQ FT	15	15
Z0016200	DECK SLAB REPAIR (PARTIAL)	SQ YD	3	3
Z0032500	JOINT SEALING (PATCHES)	FOOT	600	600



STAGE I TRAFFIC - LOOKING EAST



STAGE II TRAFFIC - LOOKING EAST

MODEL: traffic [Sheet]  
FILE NAME: c:\p\work\pwtoldudley\cml12335712f57 plansheet.dgn

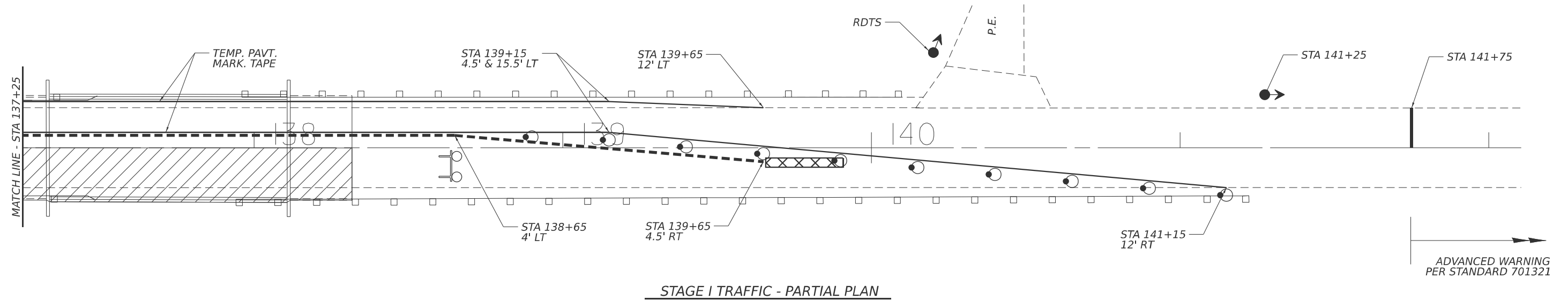
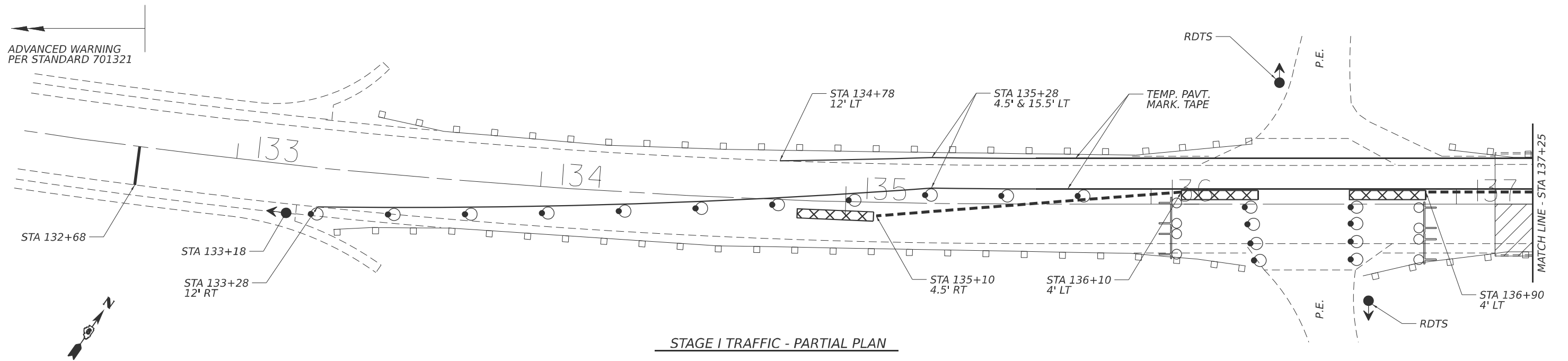
USER NAME	= brandon.dudley	DESIGNED	-	REVISED	-
		DRAWN	-	REVISED	-
		CHECKED	-	REVISED	-
PLOT DATE	= 6/4/2025	DATE	-	REVISED	-

STATE OF ILLINOIS  
DEPARTMENT OF TRANSPORTATION

TRAFFIC STAGING DETAIL

SCALE: SHEET 1 OF 3 SHEETS STA. TO STA.

F.A.P RTE.	SECTION	COUNTY	TOTAL SHEETS	SHEET NO.
737	(1B-2)BJR,BDR,BRR	MENARD	12	5
CONTRACT NO. 72F57				
ILLINOIS FED. AID PROJECT				



## SYMBOLS

	WORK AREA
	DRUM WITH STEADY BURN BI-DIRECTIONAL LIGHT
	TRAFFIC SIGNAL
	TYPE III BARRICADE WITH FLASHING LIGHTS
	TEMPORARY CONCRETE BARRIER
	IMPACT ATTENUATOR

### TRAFFIC CONTROL NOTES:

- Traffic control devices not shown in this detail shall be per standard 701321. Devices and temporary pavement markings shown in this detail shall be included in the cost of TRAFFIC CONTROL AND PROTECTION, STANDARD 701321. Impact attenuators temporary rumble strips, temporary concrete barrier, and temporary traffic signals shall be paid separately.
- Temporary concrete barrier offsets given in this detail refer to the edge of the barrier nearest to live traffic.
- Residential Driveway Temporary Signals (RDTS) shall be provided for the private entrances at STA 136±50 LT & RT, and STA 140±30 LT. Cost included with TEMPORARY BRIDGE TRAFFIC SIGNALS. See special provisions.
- A minimum 30' opening shall be maintained for private entrances at STA 136±50 LT & RT.

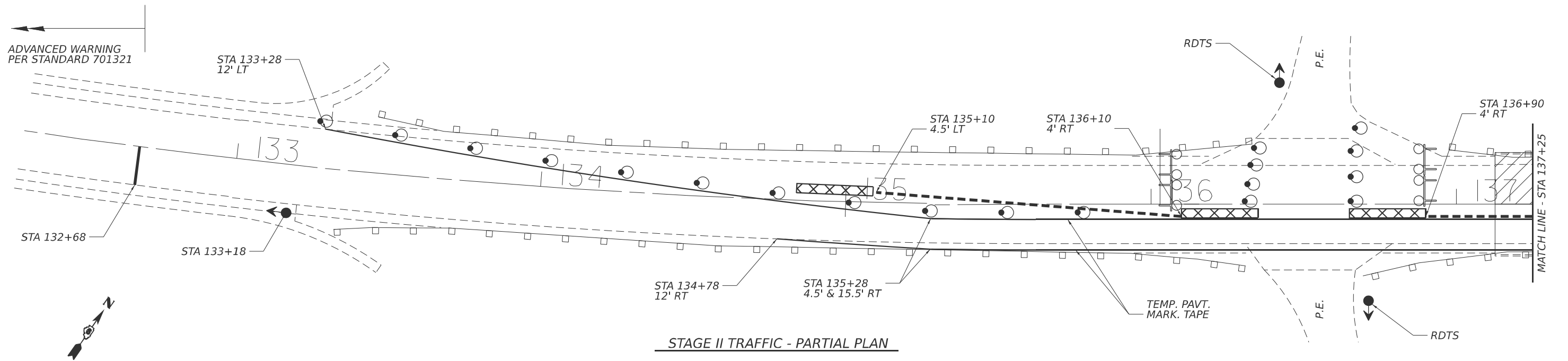
STATE OF ILLINOIS  
DEPARTMENT OF TRANSPORTATION

### STAGE I TRAFFIC CONTROL PLAN

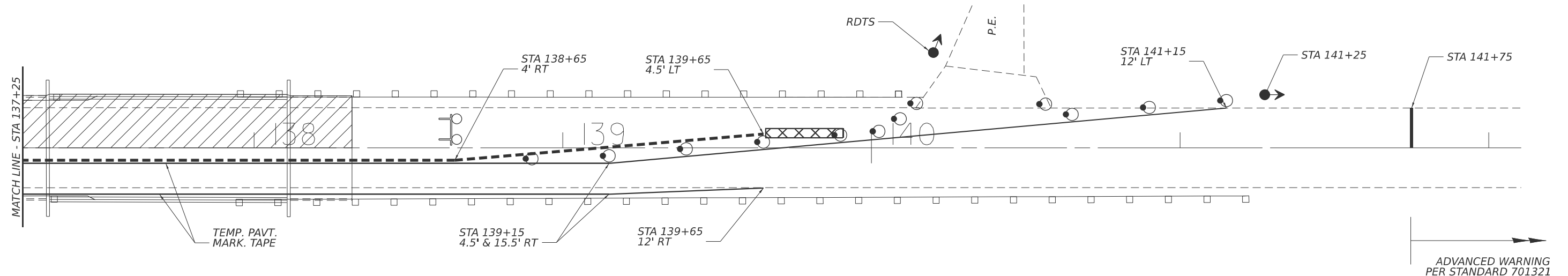
SCALE: SHEET 2 OF 3 SHEETS STA. TO STA.

F.A.P. RTE.	SECTION	COUNTY	TOTAL SHEETS	SHEET NO.
737	(1B-2)BJR,BDR,BRR	MENARD	12	6
CONTRACT NO. 72F57				
ILLINOIS FED. AID PROJECT				

USER NAME = brandon.dudley	DESIGNED -	REVISED -
	DRAWN -	REVISED -
	CHECKED -	REVISED -
PLOT DATE = 6/4/2025	DATE -	REVISED -



STAGE II TRAFFIC - PARTIAL PLAN



STAGE II TRAFFIC - PARTIAL PLAN

### SYMBOLS

- WORK AREA
- DRUM WITH STEADY BURN  
BI-DIRECTIONAL LIGHT
- TRAFFIC SIGNAL
- TYPE III BARRICADE WITH  
FLASHING LIGHTS
- TEMPORARY CONCRETE BARRIER
- IMPACT ATTENUATOR

### TRAFFIC CONTROL NOTES:

- Traffic control devices not shown in this detail shall be per standard 701321. Devices and temporary pavement markings shown in this detail shall be included in the cost of TRAFFIC CONTROL AND PROTECTION, STANDARD 701321. Impact attenuators temporary rumble strips, temporary concrete barrier, and temporary traffic signals shall be paid separately.
- Temporary concrete barrier offsets given in this detail refer to the edge of the barrier nearest to live traffic.
- Residential Driveway Temporary Signals (RDTS) shall be provided for the private entrances at STA 136±50 LT & RT, and STA 140±30 LT. Cost included with TEMPORARY BRIDGE TRAFFIC SIGNALS. See special provisions.
- A minimum 30' opening shall be maintained for private entrances at STA 136±50 LT & RT.

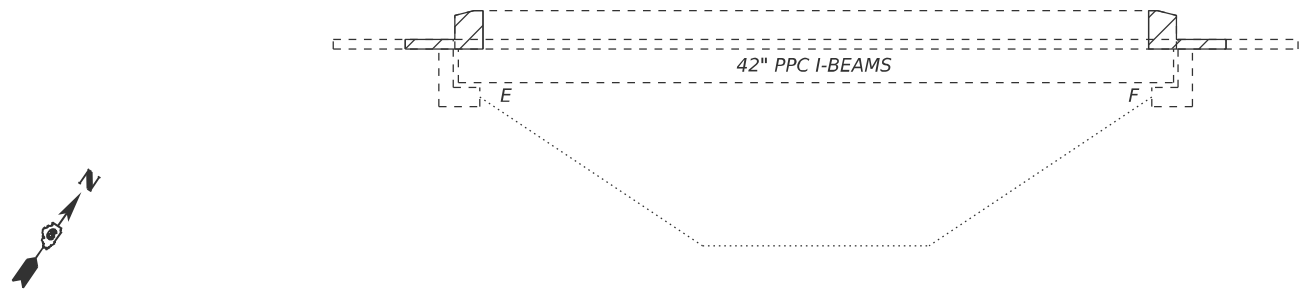
STATE OF ILLINOIS  
DEPARTMENT OF TRANSPORTATION

### STAGE II TRAFFIC CONTROL PLAN

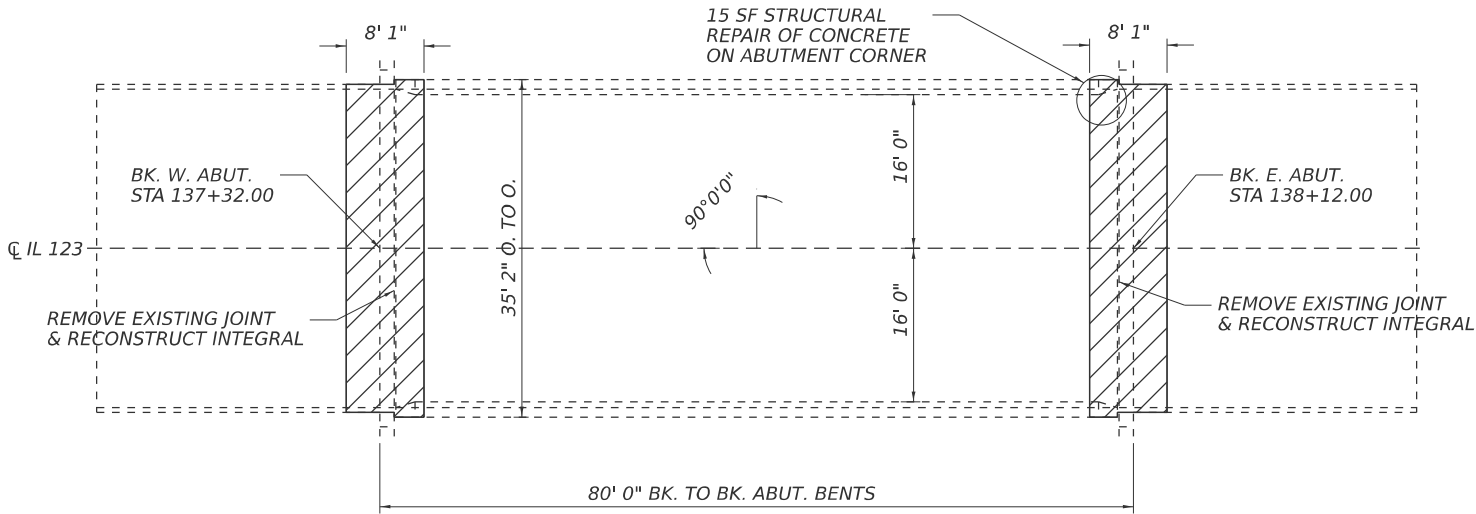
SCALE: SHEET 3 OF 3 SHEETS STA. TO STA.

F.A.P RTE.	SECTION	COUNTY	TOTAL SHEETS	SHEET NO.
737	(1B-2)BJR,BDR,BRR	MENARD	12	7
CONTRACT NO. 72F57				
ILLINOIS FED. AID PROJECT				

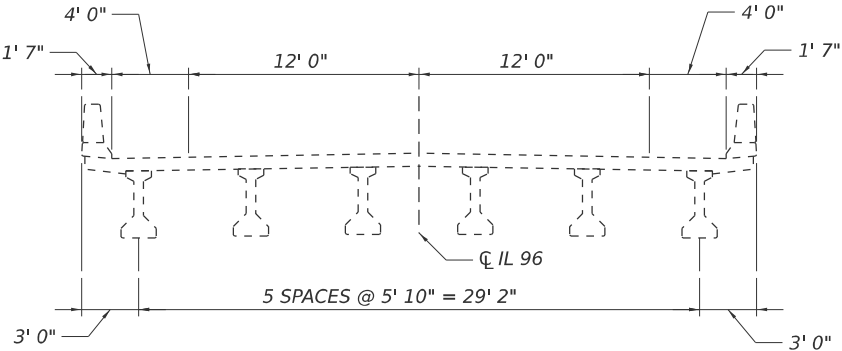
USER NAME	= brandon.dudley	DESIGNED	-	REVISED	-
		DRAWN	-	REVISED	-
		CHECKED	-	REVISED	-
PLOT DATE	= 6/4/2025	DATE	-	REVISED	-



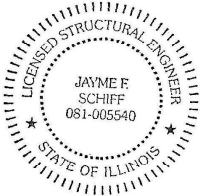
ELEVATION



PLAN



CROSS SECTION



EXPIRES 11-30-2026

Jayme F. Schiff

STRUCTURE GENERAL NOTES:

PLAN DIMENSIONS AND DETAILS RELATIVE TO THE EXISTING STRUCTURE HAVE BEEN TAKEN FROM EXISTING PLANS AND ARE SUBJECT TO NOMINAL CONSTRUCTION VARIATIONS. THE CONTRACTOR SHALL FIELD VERIFY EXISTING DIMENSIONS AND DETAILS AFFECTING NEW CONSTRUCTION AND MAKE NECESSARY APPROVED ADJUSTMENTS PRIOR TO CONSTRUCTION OR ORDERING OF MATERIALS. SUCH VARIATIONS SHALL NOT BE CAUSE FOR ADDITIONAL COMPENSATION FOR A CHANGE IN THE SCOPE OF WORK, HOWEVER, THE CONTRACTOR WILL BE PAID FOR THE QUANTITY ACTUALLY FURNISHED AT THE UNIT PRICE BID FOR THE WORK.

EXISTING REINFORCEMENT BARS EXTENDING INTO THE REMOVAL AREA SHALL BE CLEANED, STRAIGHTENED, AND INCORPORATED INTO THE NEW CONSTRUCTION. ANY REINFORCEMENT BARS THAT ARE DAMAGED DURING CONCRETE REMOVAL SHALL BE REPLACED WITH AN APPROVED BAR SPLICER OR ANCHORAGE SYSTEM. COST INCLUDED WITH CONCRETE REMOVAL.

THE DECK SURFACE SHALL HAVE ITS FINAL FINISH TINED ACCORDING TO ARTICLE 420.09(e)(1) OF THE STANDARD SPECIFICATIONS, COST INCLUDED IN CONCRETE SUPERSTRUCTURE.

THE ENGINEER SHALL SHOW ACTUAL LOCATIONS AND SIZES OF DECK AND APPROACH REPAIRS ON THE AS BUILT PLANS.

REINFORCEMENT BARS DESGINATED (E) SHALL BE EPOXY COATED.

THE CONTRACTOR SHALL USE EXTREME CARE DURING CONCRETE REMOVAL SO AS NOT TO DAMAGE PPC I-BEAMS.

PROTECTIVE COAT TO BE APPLIED TO AREAS OF NEW CONCRETE ONLY.

ANY LOOSE OR DELAMINATED CONCRETE ON THE BEAM ENDS SHALL BE REMOVED AND SURFACES PREPARED PER THE SPECIAL PROVISION FOR STRUCTURAL REPAIR OF CONCRETE PRIOR TO POURING THE BEAM END ENCASEMENT.

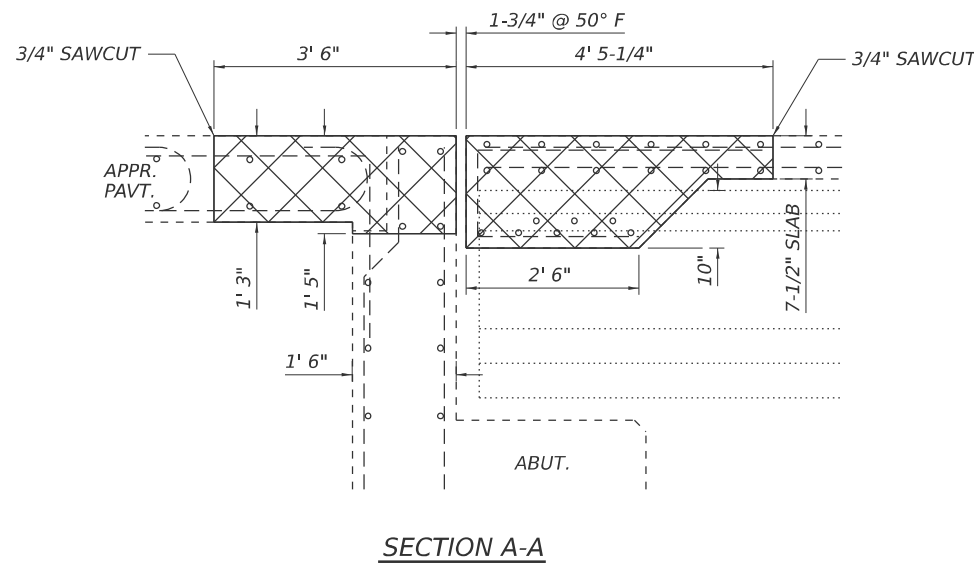
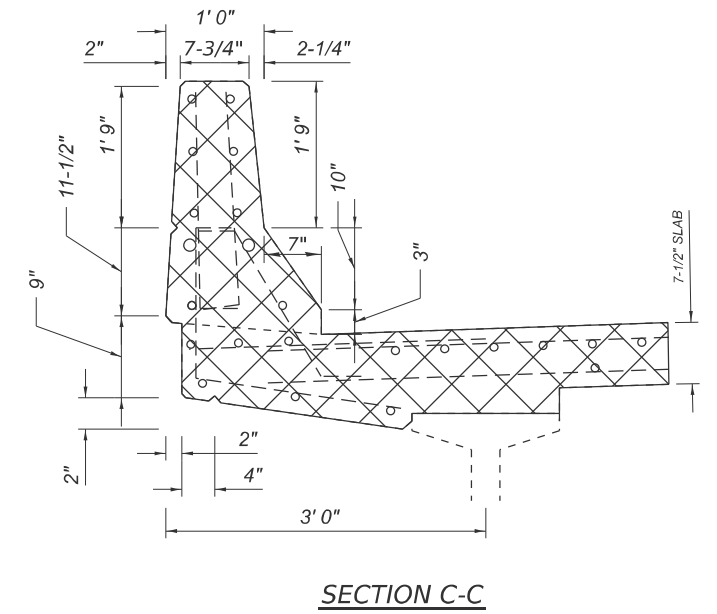
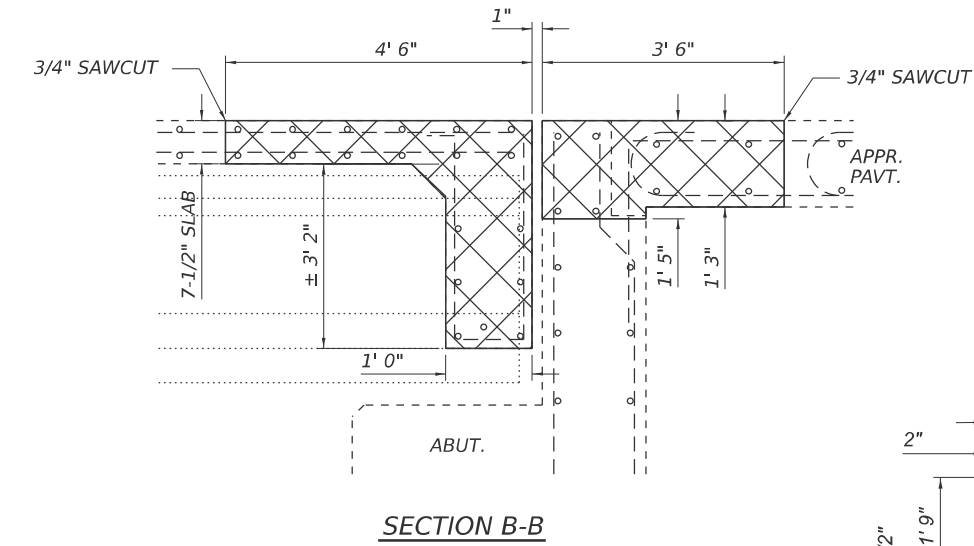
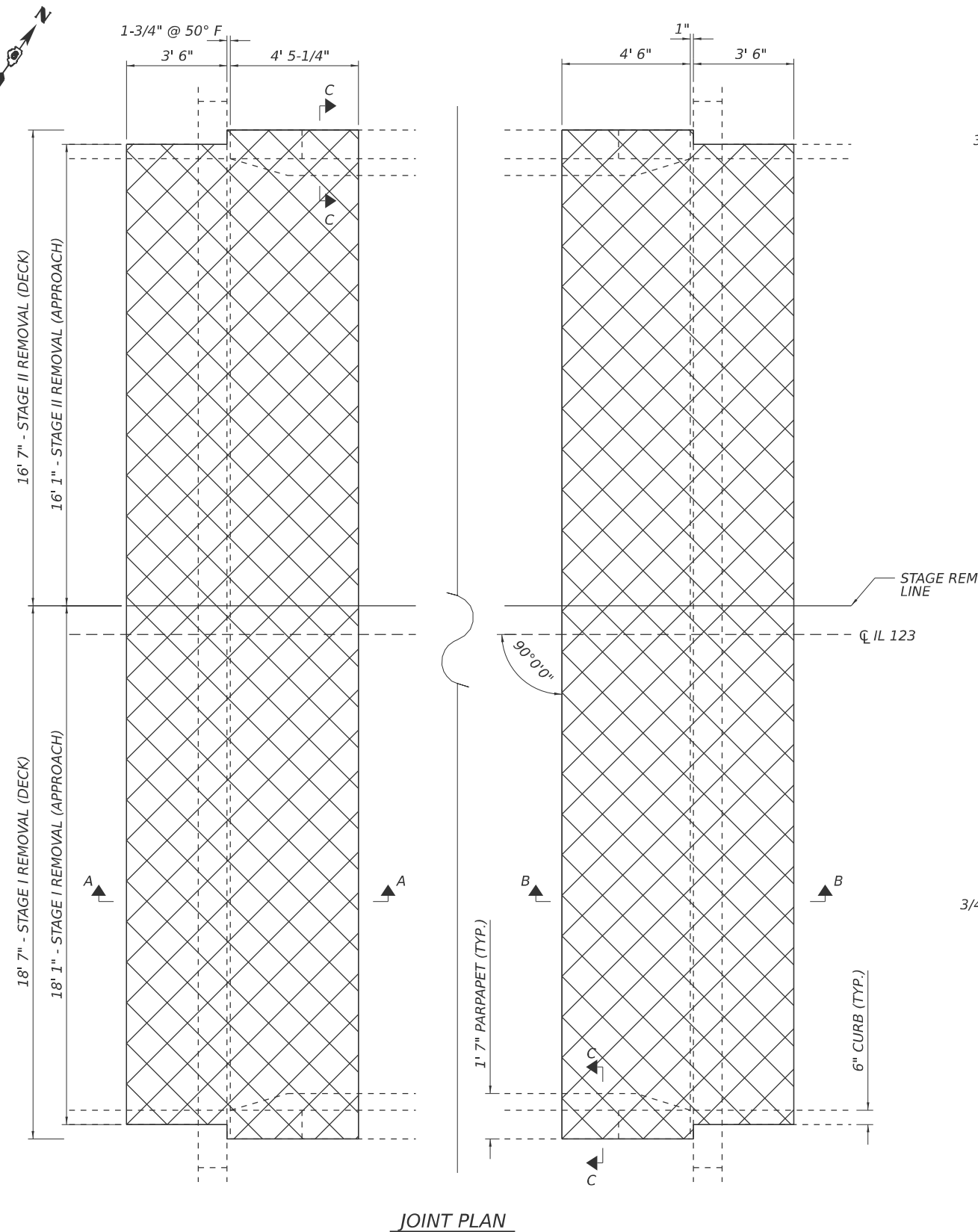
TOTAL BILL OF MATERIAL (065-0018)

ITEM	UNIT	QUANTITY
Concrete Removal	Cu. Yd.	29.0
Concrete Superstructure	Cu. Yd.	38.5
Reinforcement Bars, Epoxy Coated	Pound	4260
Bar Splicers	Each	58
Approach Slab Repair (Partial Depth)	Sq. Yd.	22
Deck Slab Repair (Partial)	Sq. Yd.	3
Protective Coat	Sq. Yd.	75
Structural Repair Of Concrete (Depth Equal To Or Less Than 5")	Sq. Ft.	15
Joint Sealing (Patches)	Foot	600
Remove And Reerect Traffic Barrier Terminals, Type 6	Each	4

MODEL: bridge [Sheet]  
FILE NAME: c:\p\work\pwtd\ddudley\cml12335712f57 plansheet.dgn

	USER NAME = brandon.dudley	DESIGNED - BRANDON DUDLEY	REVISED -	STATE OF ILLINOIS DEPARTMENT OF TRANSPORTATION	BRIDGE PLAN & ELEVATION SN 065-0018		F.A.P RTE.	SECTION	COUNTY	TOTAL SHEETS	SHEET NO.
		DRAWN - BRANDON DUDLEY	REVISED -				737	(1B-2)BJR,BDR,BRR	MENARD	12	8
		CHECKED -	REVISED -				CONTRACT NO. 72F57				
	PLOT DATE = 6/4/2025	DATE -	REVISED -				ILLINOIS FED. AID PROJECT				
SCALE:		SHEET 1	OF 5	SHEETS	STA.	TO STA.					





NOTE: LONGITUDINAL BARS EXTENDING INTO THE REMOVAL AREAS SHALL REMAIN. TRANSVERSE BARS SHALL BE REMOVED.

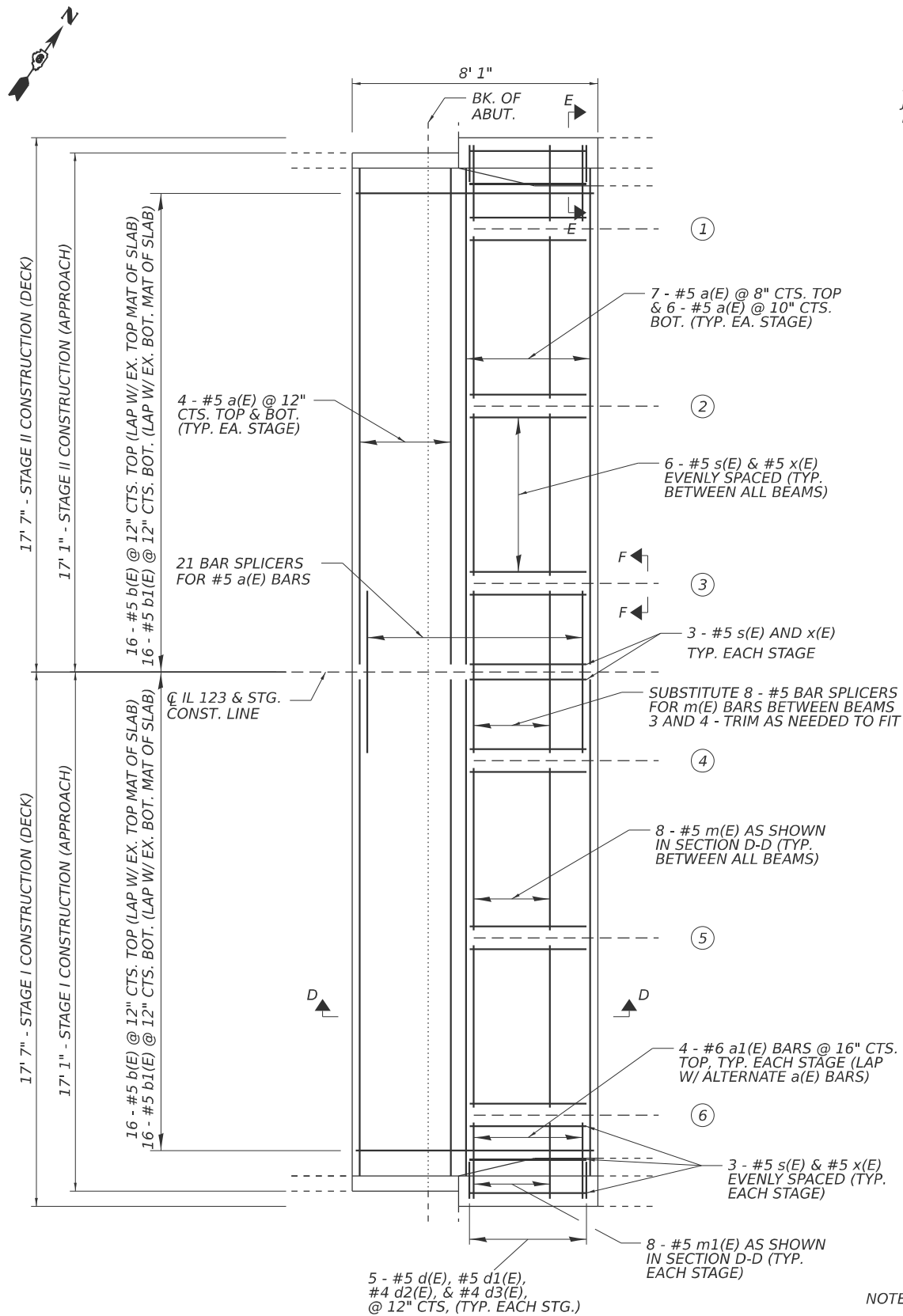
USER NAME = brandon.dudley	DESIGNED -	REVISED -
	DRAWN -	REVISED -
	CHECKED -	REVISED -
PLOT DATE = 6/4/2025	DATE -	REVISED -

**STATE OF ILLINOIS**  
**DEPARTMENT OF TRANSPORTATION**

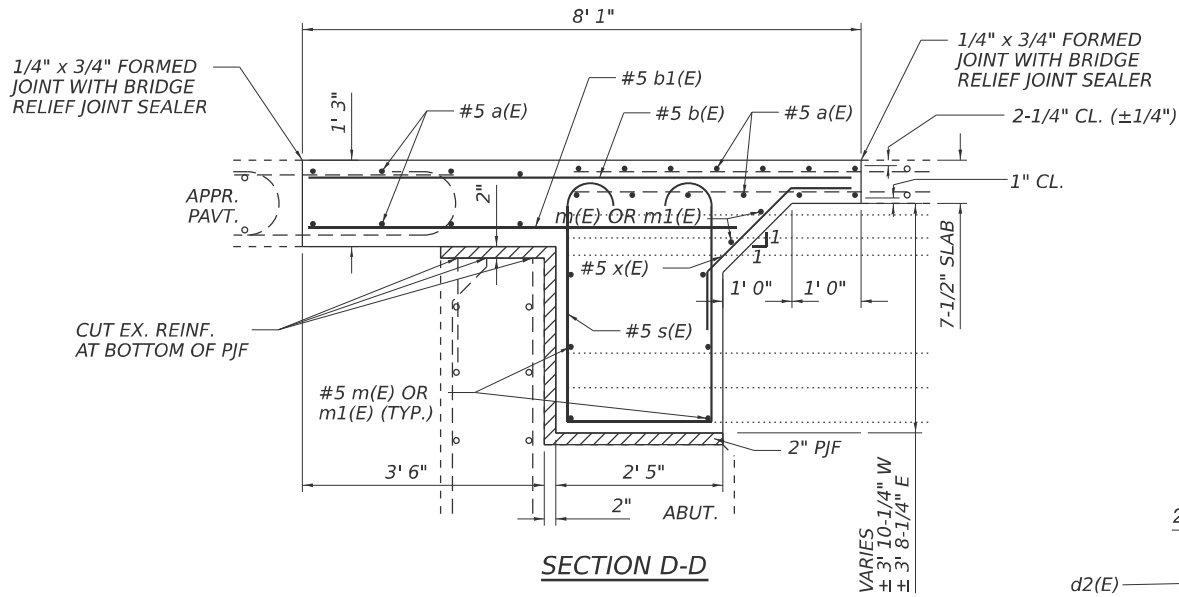
**CONCRETE REMOVAL DETAILS**  
**SN 065-0018**

F.A.P RTE.	SECTION	COUNTY	TOTAL SHEETS	SHEET NO.
737	(1B-2)BJR,BDR,BRR	MENARD	12	9
CONTRACT NO. 72F57				
ILLINOIS		FED. AID PROJECT		

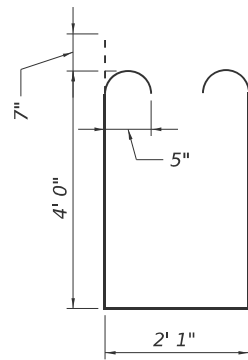
MODEL: bridge-2 [Sheet]  
FILE NAME: c:\p\work\dwg\duddley\cml112335712f57 plansheet.dgn



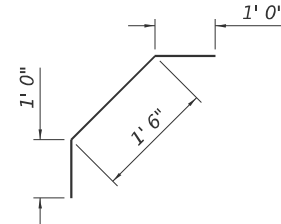
**JOINT PLAN**  
(WEST JOINT SHOWN, EAST SIMILAR)



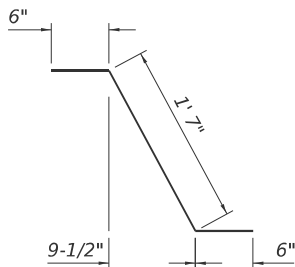
**SECTION D-D**



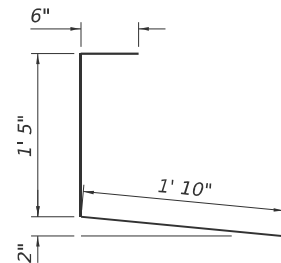
**BAR s(E)**



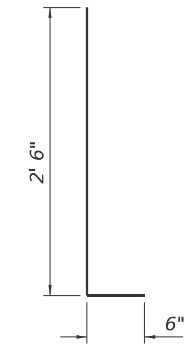
**BAR x(E)**



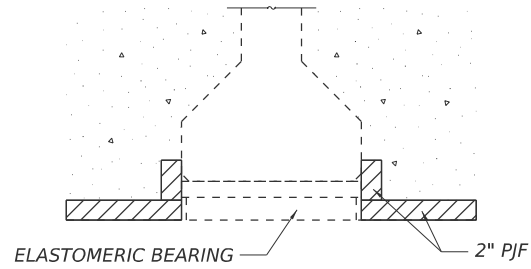
**BAR d1(E)**



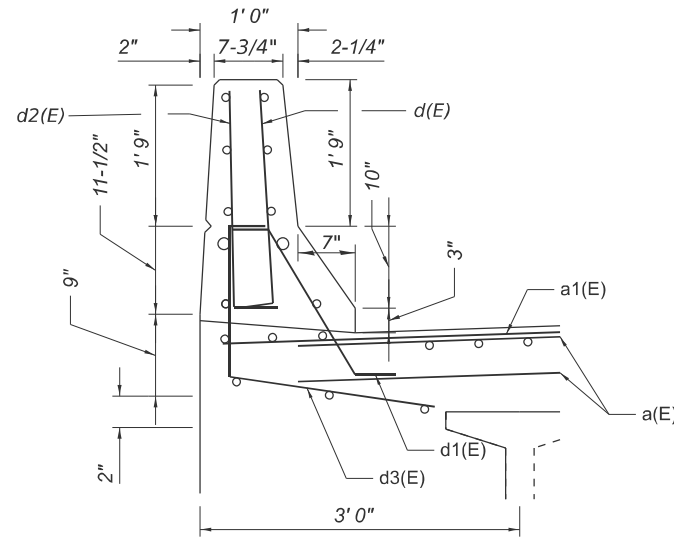
**BAR d3(E)**



**BARS d(E) & d2(E)**



**SECTION F-F**  
(TYP. ALL W. ABUT. BRGS.)



**SECTION E-E**  
(SHOWING PARAPET REINF. ONLY)

**ABUTMENT JOINTS**  
**BILL OF MATERIAL (2 JOINTS)**

Bar	No.	Size	Length	Shape
a(E)	84	#5	16'-5"	—
a1(E)	16	#6	6'-0"	—
b(E)	64	#5	7'-10"	—
b1(E)	64	#5	6'-3"	—
d(E)	20	#5	3'-0"	┘
d1(E)	20	#5	2'-7"	┘
d2(E)	20	#4	3'-0"	┘
d3(E)	20	#4	3'-9"	┘
m(E)	64	#5	5'-0"	—
m1(E)	32	#5	2'-5"	—
s(E)	72	#5	11'-3"	┘
x(E)	72	#5	3'-6"	┘
Concrete Removal			Cu. Yd.	27.4
Concrete Superstructure			Cu. Yd.	42.4
Reinforcement Bars, Epoxy Coated			Pound	4260
Bar Splicers			Each	58

**NOTES:**

EXISTING SIDE RETAINERS SHALL BE REMOVED AND ANCHOR BOLTS CUT OFF FLUSH WITH EXISTING CONCRETE SURFACE, COST INCLUDED WITH CONCRETE REMOVAL.

ELASTOMERIC BEARINGS SHALL BE ISOLATED FROM THE NEW CONCRETE WITH PJF OR FOAM (SEE SECTION F-F). FIXED BEARINGS SHALL BE INCORPORATED INTO THE NEW CONCRETE.

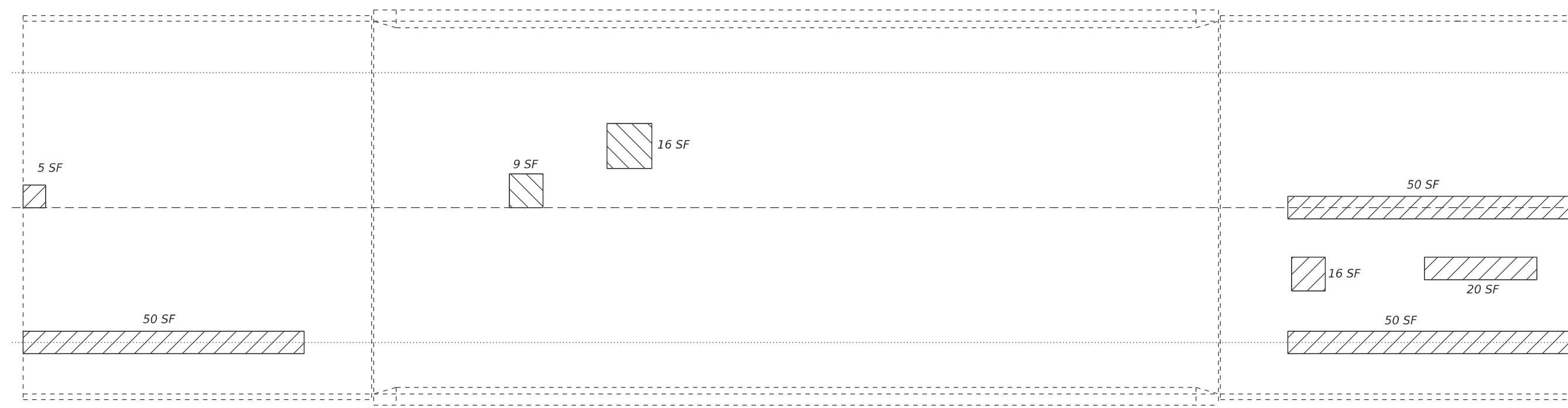
DELAMINATED CONCRETE ON THE BEAM ENDS SHALL BE REMOVED AND THE SURFACES CLEANED PER THE STRUCTURAL REPAIR OF CONCRETE SPECIAL PROVISION PRIOR TO CONCRETE ENCASUREMENT.

**STATE OF ILLINOIS**  
**DEPARTMENT OF TRANSPORTATION**

**CONCRETE SUPERSTRUCTURE DETAILS**  
**SN 065-0018**

SCALE: SHEET 3 OF 5 SHEETS STA. TO STA.

F.A.P. RTE.	SECTION	COUNTY	TOTAL SHEETS	SHEET NO.
737	(1B-2)BJR,BDR,BRR	MENARD	12	10
CONTRACT NO. 72F57				
ILLINOIS FED. AID PROJECT				



*Deck Slab Repair (Partial)*

*JOINT SEALING (PATCHES) shall be applied in locations as directed in the special provisions, along the entire length of any existing stage construction joints, and along new construction joints in the repair area.*

ITEM	UNIT	QUANTITY
Deck Slab Repair (Partial)	Sq. Yd.	3
Approach Slab Repair (Partial Depth)	Sq. Yd.	22

F.A.P RTE.	SECTION	COUNTY	TOTAL SHEETS	SHEET NO.
737	(1B-2)BJR,BDR,BRR	MENARD	12	11
		CONTRACT NO. 72F57		
ILLINOIS		FED. AID PROJECT		

MODEL: bridge-3 [Sheet]  
FILE NAME: c:\pw\_work\pwidot\dudleyb\m\112335\72F57 plansheet.dgn

MODEL: bridge-4 [Sheet]  
FILE NAME: c:\p\work\p\w\tdudley\c\m\1123357172F57 plansheet.dgn

BSD-1

5-15-2023

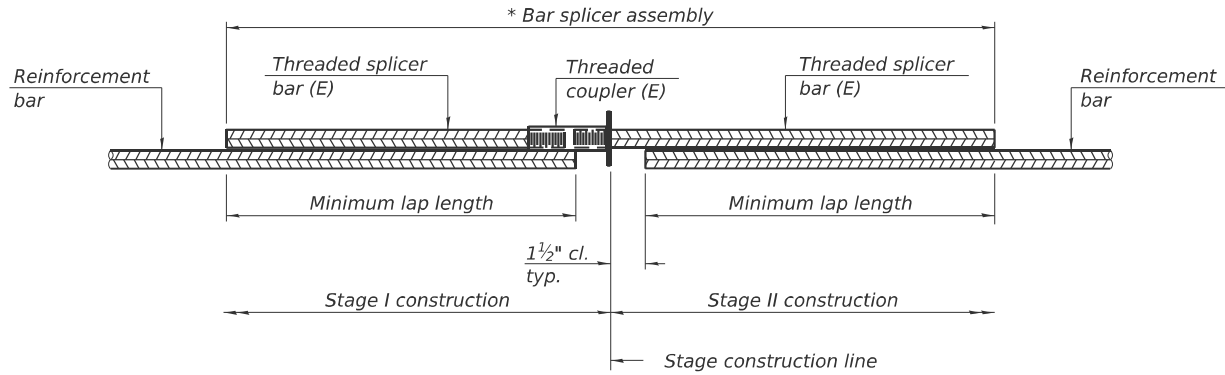
USER NAME	= brandon.dudley	DESIGNED	-	REVISED	-
		DRAWN	-	REVISED	-
		CHECKED	-	REVISED	-
PLOT DATE	= 6/4/2025	DATE	-	REVISED	-

STATE OF ILLINOIS  
DEPARTMENT OF TRANSPORTATION

BAR SPLICER ASSEMBLY & MECHANICAL SPLICER DETAILS  
SN 065-0018

SCALE: SHEET 5 OF 5 SHEETS STA. TO STA.

F.A.P. RTE.	SECTION	COUNTY	TOTAL SHEETS	SHEET NO.
737	(1B-2)BJR,BDR,BRR	MENARD	12	12
		CONTRACT NO. 72F57		
		ILLINOIS	FED. AID PROJECT	



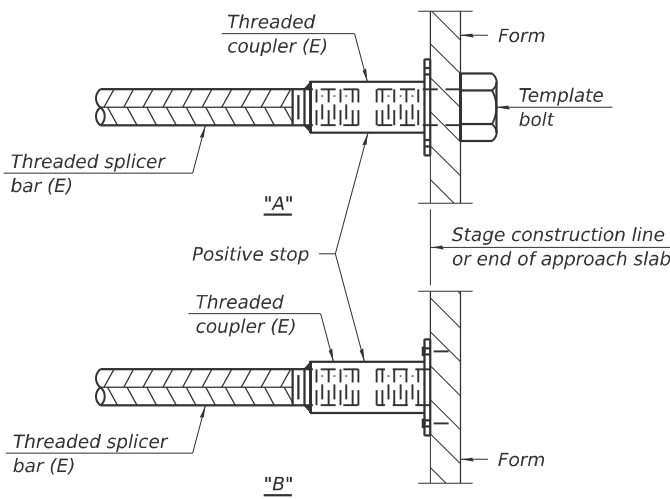
#### STANDARD BAR SPLICER ASSEMBLY PLAN

Only bar splicer assemblies as presented on the approved QPL list may be used.

Threaded splicer bar length = min. lap length + 1½" + thread length

\* Epoxy not required on Bar Splicer Assembly components used in conjunction with black bars.

Location	Bar size	No. assemblies required	Minimum lap length
Abut. Jts.	#5	58	3'-6"

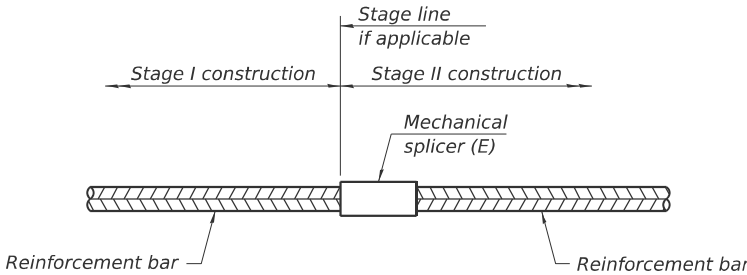


#### INSTALLATION AND SETTING METHODS

"A" : Set bar splicer assembly by means of a template bolt.

"B" : Set bar splicer assembly by nailing to wood forms or cementing to steel forms.

(E) : Indicates epoxy coating.



#### STANDARD MECHANICAL SPLICER

Location	Bar size	No. assemblies required

Notes:  
Splicer bars shall be deformed with threaded ends and have a minimum 60 ksi yield strength.  
All reinforcement shall be lapped and tied to the splicer bars.  
Bar splicer assemblies shall be epoxy coated according to the requirements for reinforcement bars. See Section 508 of the Standard Specifications.  
See approved list of bar splicer assemblies and mechanical splicers for alternatives.