

STATE OF ILLINOIS  
DEPARTMENT OF TRANSPORTATION  
DIVISION OF HIGHWAYS

# PROPOSED HIGHWAY PLANS

FAI 74 ROUTE I-74  
SECTION 72(8,9,9-1)LS-17  
PROJECT: LANDSCAPING  
PEORIA COUNTY

C-94-101-25

## INDEX OF SHEETS

- 1 COVER SHEET
- 2 JOB SPECIFIC NOTES & COMMITMENTS /  
CALENDAR OF LANDSCAPE MAINTENANCE
- 3-4 SUMMARY OF QUANTITIES
- 5-6 SCHEDULE OF QUANTITIES
- 7 OVERALL PLAN
- 8 PLAN SHEET - LAYOUT 1
- 9 PLAN SHEET - LAYOUT 2
- 10 PLAN SHEET - LAYOUT 3
- 11 PLAN SHEET - LAYOUT 4
- 12 PLAN SHEET - LAYOUT 5
- 13 PLAN SHEET - LAYOUT 6
- 14 PLAN SHEET - LAYOUT 7
- 15 PLANTER DETAIL
- 16 TRAFFIC CONTROL PLAN
- 17 HERBICIDE DOSAGE CHART

## HIGHWAY STANDARDS

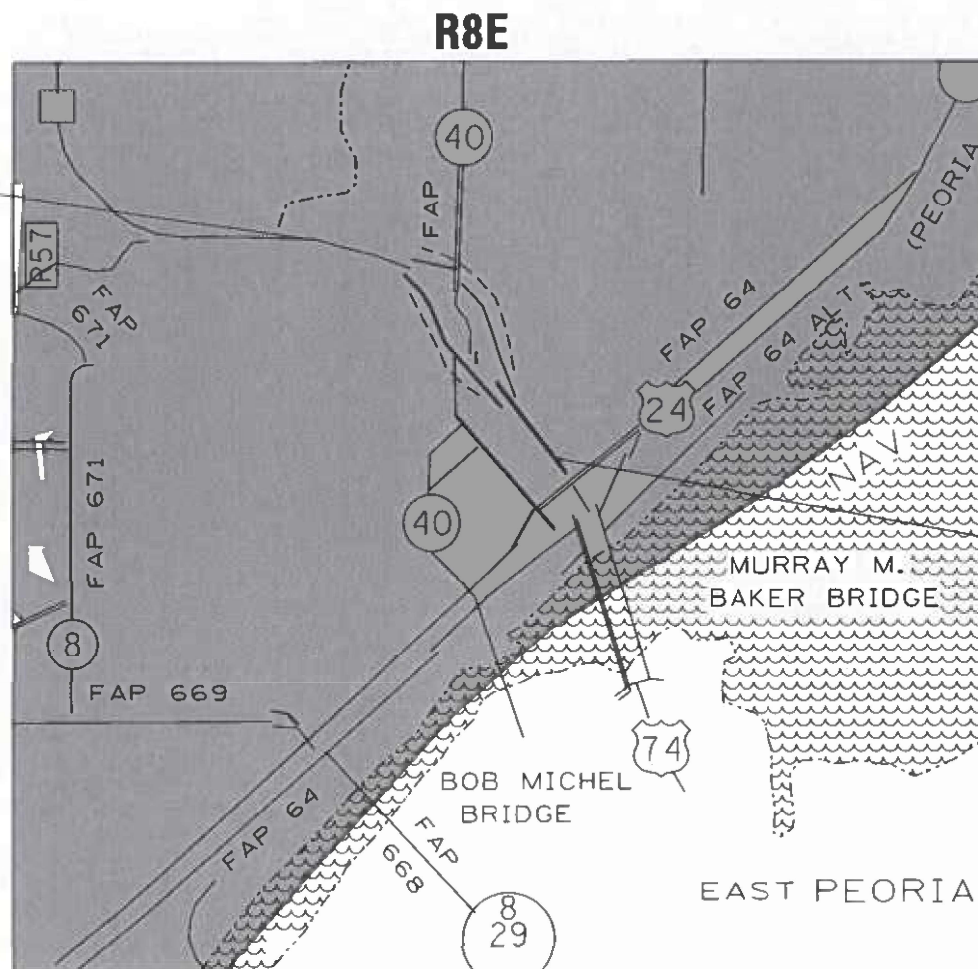
- 701001-02
- 701006-05
- 701101-05
- 701106-02
- 701201-05
- 701301-04
- 701456-05
- 701801-06
- 701901-11

FULL SIZE PLANS HAVE BEEN PREPARED USING STANDARD  
ENGINEERING SCALES. REDUCED SIZED PLANS WILL NOT  
CONFORM TO STANDARD SCALES. IN MAKING MEASUREMENTS  
ON REDUCED PLANS, THE ABOVE SCALES MAY BE USED.

J.U.L.I.E.  
JOINT UTILITY LOCATION INFORMATION FOR EXCAVATION  
1-800-892-0123  
OR 811

PROJECT ENGINEER: BEN TELLEFSON 309-671-3333  
PROJECT MANAGER: BRITTANY GAVIN 309-671-4487

CONTRACT NO. 68K52  
CATALOG NO. 036690-00D



PROJECT BEGINS  
STA. 148+200



T9N

PROJECT ENDS  
STA. 150+400

GROSS LENGTH = 7,286.20 FT. = 1.38 MILE  
NET LENGTH = 7,286.20 FT. = 1.38 MILE

F.A.I. RTE.	SECTION	COUNTY	TOTAL SHEETS	SHEET NO.
74	72(8,9,9-1)LS-17	PEORIA	17	1
ILLINOIS CONTRACT NO. 68K52				

D-94-086-25



## DESCRIPTION OF WORK

THIS PROJECT INVOLVES LANDSCAPING MAINTENANCE ALONG  
I-74 FROM ELLIS TO THE ILLINOIS RIVER IN PEORIA.

STATE OF ILLINOIS  
DEPARTMENT OF TRANSPORTATION

SUBMITTED October 14 2025  
Kristal A. Barnett  
REGIONAL ENGINEER

December 5, 2025  
Scott A. Etkin  
ENGINEER OF DESIGN AND ENVIRONMENT

December 5, 2025  
John A. Etkin  
DIRECTOR OF HIGHWAYS PROJECT IMPLEMENTATION

PRINTED BY THE AUTHORITY  
OF THE STATE OF ILLINOIS

JOB SPECIFIC NOTES

The contractor will be responsible for field verification of locations for all landscaping items. Numbers indicated on the layouts are an estimate and do not reflect the exact total.

The removal of dead underbrush, debris, litter, and other miscellaneous items shall be completed and will be considered included in the cost of the associated pay items.

SELECTIVE CLEARING shall include removal of naturally occurring logs, shrubs, bushes, saplings, weeds, other vegetation and stumps of a diameter less than 6 in. at locations specified by the Roadside Manager. All work will be done in accordance with the special provisions. All costs for removing living and dead plants shall be included in the pay item SELECTIVE CLEARING.

PERENNIAL PLANT CARE shall include weeding and edging of the perennial beds. The cost for edging and weeding shall be included in the pay item for PERENNIAL PLANT CARE.

SHRUB CARE shall include weeding and pruning of shrubs from access control fence debris removal and disposal, insect control, pruning, edging, volunteer trees and other plant care work items for each work cycle as described in the special provisions and as directed by the Roadside Manager.

All vegetation should be trimmed 12” from all access control fences. The cost shall be included in the pay item SHRUB CARE.

TREE CARE shall include weeding, debris removal and disposal, insect control, pruning, edging, and other plant care work items for each work cycle as described in the special provisions and as directed by the Roadside Manager.

MOWING (SPECIAL) shall include trimming along walls and foundations. The cost for trimming shall be included in the cost of MOWING (SPECIAL).

Trees, shrubs and perennial plants shall not encroach upon the sidewalks and gutters. The cost to trim these items will be included in the cost of the associated pay items.

PERENNIAL PLANTS

There are several planters along Perry, Monroe, Madison, and Jefferson Streets. The planters in these locations will be filled with plantings listed on the table in the Schedule of Quantities. All weeding and dirt required for these planters shall be included in the pay item for the plants specified.

WEED CONTROL, BROADLEAF IN TURF NOTES:

- 1. Contact Roadside Manager or Operations Roadside Manager prior to commencing spray activities.
- 2. Spraying must be completed before any other contract activities take place. Two weeks minimum between spraying and planting.
- 3. Non–working equipment shall be repaired immediately with no additional time allotted to the contractor for repairs.
- 4. Spray operators shall keep a copy of contract spray locations with them at all times.
- 5. Wind speed must be < 15 mph in order to perform work.
- 6. Temperature must be > 45 degrees in order to perform work.
- 7. Daily inspections by Roadside Manager during the weed spraying operation.

COMMITMENTS:

NONE

CALENDAR OF LANDSCAPE MAINTENANCE				
2026 WORK DATES		CONSTRUCTION WORK		ESTABLISHMENT WORK
FROM	TO			
APRIL 1	OCT 31	Mowing (Special)		Mow turf areas to a turf height of 3 inches. (Layout 1, 2, 3, 4, 5 &7) All applicable layouts 1–2 times per month at Engineer’s discretion
MAY 1	OCT 1	Perennial Plant Care		All applicable layouts 1–2 times per month at Engineer’s discretion
MAY 1	MAY 31	Weed Control placed within 5 days of start date		One cycle all layouts
MAY 1	OCT 31	Selective Clearing, Shrub Care, and Tree Care		1 Time All Layouts + Weeding Monthly

MODEL Default  
FILE NAME: P:\2023\2309BAW - FAI 74 Landscaping (FY 2026)\4 CADD - DWG\4.7 Tran\CADD Sheets\68K52-sht-cover.dgn

	USER NAME = dlce	DESIGNED -	REVISED -	STATE OF ILLINOIS DEPARTMENT OF TRANSPORTATION	JOB SPECIFIC NOTES & COMMITMENTS CALENDAR OF LANDSCAPE MAINTENANCE			F.A.I. RTE.	SECTION	COUNTY	TOTAL SHEETS	SHEET NO.
		DRAWN -	REVISED -					74	72(8,9,9-1)LS-17	PEORIA	17	2
	PLOT SCALE = 78,6960' +/- in.	CHECKED -	REVISED -					CONTRACT NO. 68K52				
	PLOT DATE = 9/11/2025	DATE -	REVISED -		SCALE: N/A	SHEET 1	OF 1 SHEETS	STA.	TO STA.	ILLINOIS FED. AID PROJECT		

MODEL D:\p\o\i\15  
FILE NAME: F:\2023\23058A\N - FAI 74 Landscaping (FY 2025)\4 CADD - DWG\4.7 Tran\CADD Sheets\0450452-sht-cover.dgn

				CONSTRUCTION CODE
				100% STATE
CODE NO.	PAY ITEM	UNIT	TOTAL QUANTITY	PEORIA COUNTY
				0031
67100100	MOBILIZATION	L SUM	1	1
A2000600	TREE, ACER PALMATUM (JAPANESE RED MAPLE), 5' HEIGHT, BALLED ANDBURLAPPED	EACH	2	2
B2000864	TREE, AMELANCHIER X GRANDIFLORA COLE'S SELECT (COLE'S SELECT SERVICEBERRY), 5' HEIGHT, SHRUB FORM, BALLED AND BURLAPPED	EACH	3	3
K0012975	PERENNIAL PLANTS, ORNAMENTAL TYPE, 4" POT	UNIT	1.9	1.9
K0012990	PERENNIAL PLANTS, ORNAMENTAL TYPE, GALLON POT	UNIT	1.7	1.7
K0026701	TREE CARE	L SUM	1	1
K0026811	SHRUB CARE	L SUM	1	1
K0026851	PERENNIAL PLANT CARE	L SUM	1	1
K0029618	WEED CONTROL, BROADLEAF IN TURF	GALLON	0.1	0.1
K0029634	WEED CONTROL, PRE-EMERGENT GRANULAR HERBICIDE	POUND	900	900
K1003680	MULCH	SQ YD	19077	19077
K1004539	PLANT WATERING	UNIT	6	6
X2010514	SELECTIVE CLEARING	ACRE	0.11	0.11
X2503110	MOWING (SPECIAL)	ACRE	63	63

USER NAME = dlee	DESIGNED -	REVISED -
	DRAWN -	REVISED -
PLOT SCALE = 78.6960' / in.	CHECKED -	REVISED -
PLOT DATE = 9/11/2025	DATE -	REVISED -

STATE OF ILLINOIS  
DEPARTMENT OF TRANSPORTATION

SUMMARY OF QUANTITIES

SCALE: N/A      SHEET 1      OF 2      SHEETS      STA.      TO STA.

F.A.I RTE.	SECTION	COUNTY	TOTAL SHEETS	SHEET NO.
74	72(8,9,9-1)LS-17	PEORIA	17	3
CONTRACT NO. 68K52				
ILLINOIS FED. AID PROJECT				

MODEL Default  
FILE NAME: F:\2023\230808\N - FAI 74 Landscaping IFFY 2026\4 CAD - DWG\4.7 Tran\CAD Sheets\046K52-sht-cover.dwg

				CONSTRUCTION CODE
				100% STATE
CODE NO.	PAY ITEM	UNIT	TOTAL QUANTITY	PEORIA COUNTY
				0031
X7010216	TRAFFIC CONTROL AND PROTECTION, (SPECIAL)	L SUM	1	1
C2003600	SHRUB, HYDRANGEA PANICULATA LITTLE QUICK FIRE (LITTLE QUICK FIRE HYDRANGEA), CONTAINER GROWN, 5- GALLON	EACH	13	13
C2C078G5	SHRUB, ROSA X KNOCK OUT (KNOCK OUT ROSE), CONTAINER GROWN, 5- GALLON	EACH	10	10
A2007730	TREE, CHAMAECYPARIS LAWSONIANA (BLUE FALSE CYPRESS), 2" CALIPER, BALLED AND BURLAPPED	EACH	10	10
B2002580	TREE, JUNIPERUS SCOPULORUM (MOONGLOW JUNIPER), 2" CALIPER, BALLED AND BURLAPPED	EACH	11	11
C2C03530	SHRUB, HYDRANGEA PANICULATA 'SMHPCW' (STRAWBERRY SHAKE), CONTAINER GROWN, 3- GALLON	EACH	13	13
C2003610	SHRUB, HYDRANGEA PAINCULATA 'DVPPINKY' (PINKY WINKY HYDRANGEA), CONTAINER GROWN, 3- GALLON	EACH	5	5
C2000670	SHRUB, ARONIA MELANOCARPA 'UCCONAM165' (LOW SCAPE MOUND ARONIA), CONTAINER GROWN, 3- GALLON	EACH	42	42
C2003812	SHRUB, ILEX X MESERVEAE 'HACHFEE'(CASTLE SPIRE MESERVE HOLLY), CONTAINER GROWN, 5- GALLON	EACH	12	12
C2003814	SHRUB, ILEX X MESERVEAE 'HECKENSTAR' (CASTLE WALL MESERVE HOLLY), CONTAINER GROWN, 5- GALLON	EACH	2	2

	USER NAME = dlee	DESIGNED -	REVISED -	STATE OF ILLINOIS DEPARTMENT OF TRANSPORTATION	SUMMARY OF QUANTITIES					F.A.I RTE.	SECTION	COUNTY	TOTAL SHEETS	SHEET NO.
		DRAWN -	REVISED -							74	72(8,9,9-1)LS-17	PEORIA	17	4
	PLOT SCALE = 78.6960' / in.	CHECKED -	REVISED -		CONTRACT NO. 68K52									
	PLOT DATE = 9/11/2025	DATE -	REVISED -							SCALE: N/A SHEET 2 OF 2 SHEETS STA. TO STA.				
	ILLINOIS FED. AID PROJECT													



MODEL Default  
FILE NAME: I:\2023\2309BAW - FAI 74 Landscaping (FY 2025)4 CAD0 - DWG\4.7 Tree\CADD Sheet\046K52-shr-cover.dgn

PERENNIAL PLANT CARE				LOCATION							
KEY	ITEM	COMMON NAME	UNIT	LI	L2	L3	L4	L5	L6	L7	TOTAL
	TREES										
	DECIDIOUS TREES										
AN	ACER NIGRUM	BLACK MAPLE	EACH	0	0	3	0	0	0	0	3
AN	ACER NIGRUM	BLACK MAPLE	EACH	0	0	3	0	0	0	0	3
AP	ACER PALMATUM 'BLOODGOOD'	JAPANESE MAPLE	EACH	0	0	0	0	0	3	0	3
GB	GINKO BILOBA	GINKO	EACH	0	0	7	0	0	0	2	9
GD	GYMNOCLADUS DIOICUS	KENTUCKY COFFEETREE	EACH	0	0	4	0	7	0	0	11
GT	GLEDITSIA TRIACANTHOS	SKYLINE THORNLESS HONEYLOCUST	EACH	0	0	0	2	0	4	0	6
PH	PINUS HELDREICHII	COMMON GEM	EACH	0	0	0	0	5	0	0	5
QA	QUERCUS BICOLOR	SWAMP OAK	EACH	0	0	15	4	1	4	25	49
UR	ULMUS REGAL	REGAL ELM	EACH	0	0	10	0	0	0	13	23
	ORNAMENTAL TREES										
AC	AMELANCHIER X GRANDIFLORA	COLE'S SELECT SERVICEBERRY	EACH	0	0	0	3	1	0	3	7
CF	CORNUS FLORIDA	FLOWERING DOGWOOD	EACH	0	0	0	0	5	0	0	5
MP	MALUS PRAIRIFIRE	PRAIRIFIRE CRABAPPLE	EACH	0	0	7	3	0	3	0	13
MS	MALUS SARGENTII	SARGENT CRABAPPLE	EACH	0	0	0	3	0	0	0	3
SA	SYRINGA RETICULATA	SYRINGA RETICULATA	EACH	0	0	18	0	0	0	0	18
SP	SYRINGA PEKINENSIS	SYRINGA PEKINENSIS	EACH	0	0	0	0	7	16	0	23
	EVERGREEN TREES										
MJ	JUNIPERUS SCOPULORUM	MOONGLOW JUNIPER	EACH	0	0	0	7	0	0	0	7
PN	PINUS NIGRA	AUSTRIAN PINE	EACH	0	0	13	0	6	3	6	28
	SUBTOTAL TREE CARE		EACH	0	0	80	22	32	33	49	216
LUMP SUM			1								

PERENNIAL PLANT CARE				LOCATION							
	SHRUBS										
AA	ARONIA ARBUTIFLORIA	RED CHOKEBERRY	EACH	0	0	0	0	0	10	10	20
AG	ANDROPOGON GERARDI	BIG BLUE STEM	EACH	0	0	0	0	0	0	9	9
AH	AMSONIA HYBRID	STRING THEORY	EACH	0	0	0	100	0	0	0	100
BP	BAPTISIA	WILD WHITE INDIGO	EACH	0	0	0	0	0	0	11	11
CN	CANNA	CANNA AUSTRALIA	EACH	0	0	0	0	2	4	2	8
FS	FORSYTHIA NORTHERN SUN	NORTHERN SUN BORDER FORSYTHIA	EACH	0	0	90	0	0	165	190	445
HA	HYRDANGEA ARBORESCENS ANNABELLE	ANNABELLE SMOOTH HYDRANGEA	EACH	0	0	11	0	0	0	0	11
HP	HYDRANGEA PANICULATA	HYDRANGEA LIMELIGHT	EACH	0	0	0	50	15	0	30	95
HQ	HYDRANGEA QUERCIFOLIA	RUBY SLIPPERS	EACH	0	0	11	0	0	0	18	29
HV	HAMAMELIS VERNALIS SUCKERS	VERNAL WITCH HAZEL 12' TO 36' TALL	EACH	0	0	100	0	0	0	0	100
LA	LAVANDULA ANGUSTIFOLIA	ENGLISH LAVENDER	EACH	0	0	0	25	0	0	25	50
LV	LIRIOPE MUSCARI	LIRIOPE VARIEGATA	EACH	0	0	0	0	0	0	50	50
MSI	MISCANTHUS SINENSIS	MORNING LIGHT	EACH	0	0	0	0	0	0	16	16
PA	PEROVSKIA ATRIPLICIFOLIA	PEROVSKIA ATRIPLICIFOLIA	EACH	0	0	290	200	0	0	0	490
PD	SILPHIUM TEREBINTHINACEUM	PRAIRIE DOCK	EACH	0	9	0	0	0	0	0	9
RA	RHUS AROMATICA	FRAGRANT SUMAC	EACH	0	0	545	0	40	70	380	1035
RG	RHUS GLABRA	SMOOTH SUMAC	EACH	0	0	15	0	0	0	0	15
RH	ROBINIA HISPIDA	BRISTLY LOCUST	EACH	0	0	0	0	0	0	0	0
RRC**	ROSA	ROSE	EACH	0	0	0	0	6	0	75	81
RS	RHODOTYPOS SCANDENS	BLACK JETBEAD	EACH	0	0	375	3	9	34	0	421
SPA	SYRINGA PATULA MISS KIM	MISS KIM MANCHURIAN LILAC	EACH	0	0	200	180	60	0	90	530
	EVERGREEN SHRUBS										
JC	JUNIPERUS CHINENSIS	KALLAYS COMPACTA	EACH	0	0	110	230	80	120	20	560
JH*	JUNIPERUS HORIZONTALIS HUGHES	HUGHES CREEPING JUNIPER	EACH	0	0	0	40	108	295	50	493
PM	PINUS MUGO	SLOWMOUND	EACH	0	0	0	6	0	0	5	11
	SUBTOTAL SHRUB CARE		EACH	0	9	1747	834	320	698	981	4589
LUMP SUM			1								

PERENNIAL PLANT CARE											
PPC	SUBTOTAL PERENNIAL PLANT CARE		SQYD	3487	512	1477	1839	281	0	774	8370
LUMP SUM			1								

LEGEND:  
L1 LANDSCAPE LAYOUT-1  
L2 LANDSCAPE LAYOUT-2  
L3 LANDSCAPE LAYOUT-3  
L4 LANDSCAPE LAYOUT-4  
L5 LANDSCAPE LAYOUT-5  
L6 LANDSCAPE LAYOUT-6  
L7 LANDSCAPE LAYOUT-7

\* JUNIPERUS HORIZONTALIS SHALL HAVE VOLUNTEER GROWTH PULLED DURING THE SPRING AND FALL. COST TO REMOVE VOLUNTEER GROWTH WILL NOT BE PAID SEPARATELY, BUT WILL BE INCLUDED IN THE COST OF SHRUB CARE

\*\* ALL RRC EACH ITEMS ARE COUNTED AS PERENNIAL PLANT CARE AND REFLECTED IN PPC SQ YD AND WILL NOT BE PAID SEPARATELY AS SHRUB CARE.

	USER NAME = dlee	DESIGNED -	REVISED -	STATE OF ILLINOIS DEPARTMENT OF TRANSPORTATION			SCHEDULE OF QUANTITIES				F.A.I. RTE.	SECTION	COUNTY	TOTAL SHEETS	SHEET NO.
	PLOT SCALE = 78,6960' * / in.	DRAWN -	REVISED -								74	72(8,9,9-1)L5-17	PEORIA	17	5
	PLOT DATE = 9/11/2025	CHECKED -	REVISED -				CONTRACT NO. 68K52								
		DATE -	REVISED -				SCALE: N/A	SHEET 1	OF 2	SHEETS	STA.	TO STA.	ILLINOIS FED. AID PROJECT		



MODEL: D:\p\h  
FILE NAME: P:\2023\2309BAW - FAI 74 Landscaping (FY 2025)\4\_CADD - DWG\4.7\_Tran\CADD\_Sheet\046K52-shr-cover.dgn

NEW PLANTINGS		LOCATION							
ITEM		L1	L2	L3	L4	L5	L6	L7	TOTAL
NEW TREES TO BE PLANTED									
ACER PALMATUM 'BLOODGOOD' 'JAPANESE MAPLE'	EACH	0	0	0	0	0	2	0	2
AMELANCHIER X GRANDIFLORA 'COLE'S SELECT SERVICEBERRY'	EACH	0	0	0	0	3	0	0	3
CHAMAECYPARIS LAWSONIANA 'BLUE FALSE CYPRESS'	EACH	0	0	0	0	0	10	0	10
JUNIPERUS SCOPULORUM 'MOONGLOW' 'MOONGLOW JUNIPER'	EACH	0	0	0	0	0	0	11	11

MOBILIZATION (67100100)		
LOCATION	UNIT	QTY
JOBSITE	L SUM	1
TOTAL	1	

TRAFFIC CONTROL AND PROTECTION (SPECIAL) (X7010216)		
LOCATION	UNIT	QTY
JOBSITE	L SUM	1
TOTAL	1	

PLANT WATERING (K1004539)	
LOCATION	GALLON
JOBSITE	6000
TOTAL	6000
TOTAL	6 UNITS
1 UNIT = 1000 GALLONS	

MULCH (K1003680)	AREA	LAYOUT					
		2	3	4	5	6	7
LOCATION	(SQ YD)	(SQ YD)	(SQ YD)	(SQ YD)	(SQ YD)	(SQ YD)	(SQ YD)
EB TOTAL	6991.11	0	580.44	1305	893.25	1149.74	3062.68
WB TOTAL	12086.01	603.15	6152.26	2207.56	802.5	1116.88	1203.66
TOTAL	19077.12	603.15	6732.7	3512.56	1695.75	2266.62	4266.34

WEED CONTROL, BROADLEAF IN TURF (K0029618)		
LOCATION	UNIT	QTY
JOBSITE	GALLON	0.1
TOTAL	0.1	

WEED CONTROL, PRE-EMERGENT GRANULAR HERBICIDE (K0029634)		
LOCATION	UNIT	QTY
JOBSITE	POUND	900
TOTAL	900	

PERENNIAL PLANT CARE WORK SCHEDULE	
ONE FULL CYCLE OF WORK, AS DIRECTED BY SPECIFICATIONS, FOR EACH LISTEN MONTH IS REQUIRED FOR ALL LAYOUTS	APRIL
	MAY
	JUNE
	JULY
	AUGUST
	SEPTEMBER
OCTOBER	

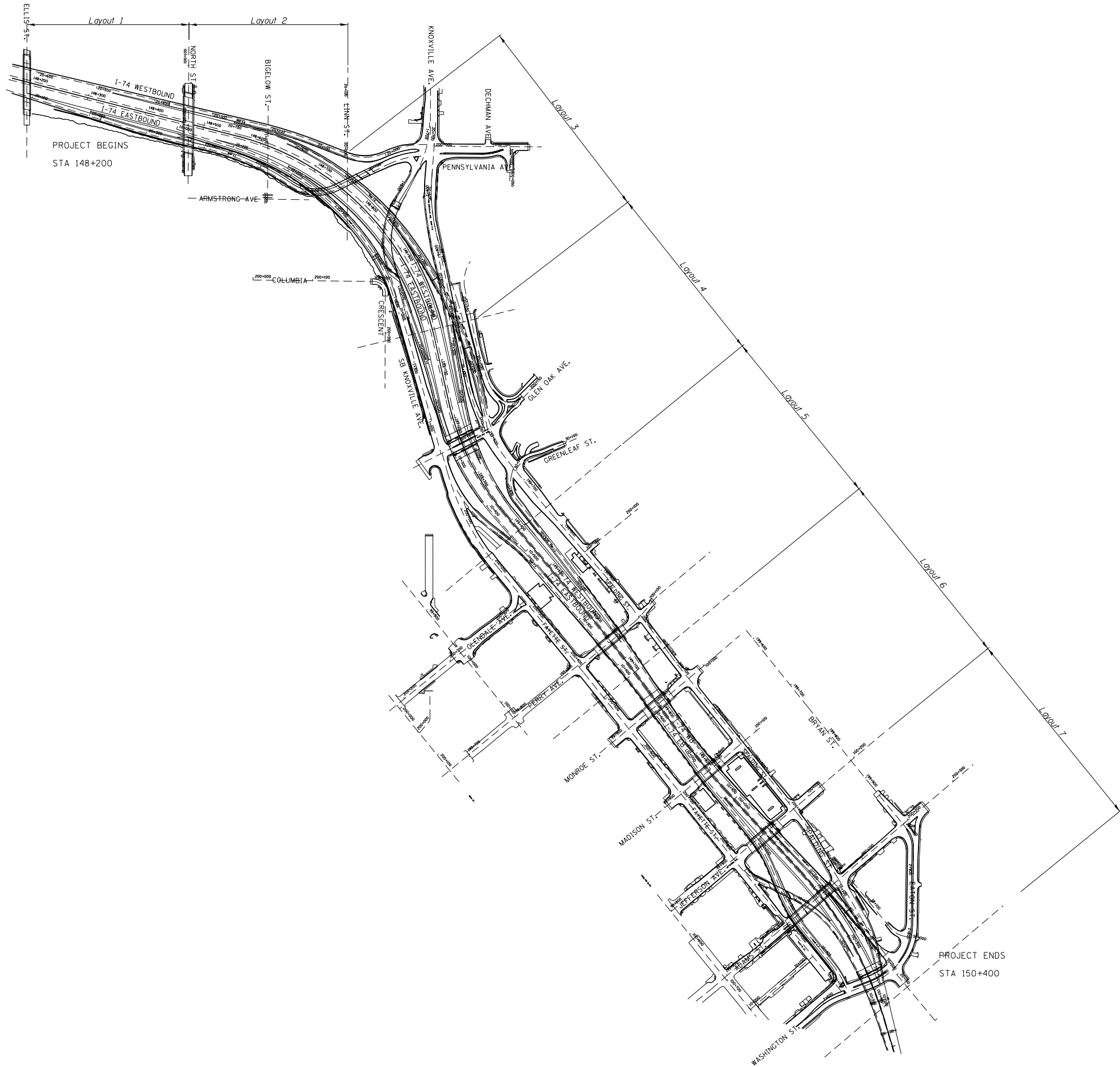
MOWING (SPECIAL) WORK SCHEDULE		
1-2 MOWINGS (AT DISCRETION OF ENGINEER) ARE REQUIRED PER LISTEN MONTH, FOR ALL LAYOUTS	MONTH	QTY
	MAY	2
	JUNE	2
	JULY	2
	AUGUST	1
	SEPTEMBER	1
OCTOBER		1

MOWING (SPECIAL) (X2503110)		
LOCATION	SQ FT	ACRES
LAYOUT 1	22651	0.52
LAYOUT 2	10019	0.23
LAYOUT 3	115870	2.66
LAYOUT 4	41382	0.95
LAYOUT 5	47480	1.09
LAYOUT 6	0	0.00
LAYOUT 7	66211	1.52
TOTAL	7.0	

TOTAL FOR CONTRACT = 63 ACRES  
(9 MOWINGS PER CONTRACT)

SELECTIVE CLEARING (Z0064600)	
	SQ YD
LAYOUT 1	0.00
LAYOUT 2	100.00
LAYOUT 3	289.00
LAYOUT 4	3.00
LAYOUT 5	0.00
LAYOUT 6	53.00
LAYOUT 7	100.00
TOTAL	545 SQ YD
TOTAL	0.11 ACRES

	USER NAME = dllee	DESIGNED -	REVISED -	STATE OF ILLINOIS DEPARTMENT OF TRANSPORTATION	SCHEDULE OF QUANTITIES			F.A.I. RTE.	SECTION	COUNTY	TOTAL SHEETS	SHEET NO.
		DRAWN -	REVISED -					74	72(8,9,9-1)LS-17	PEORIA	17	6
	PLOT SCALE = 78,6960' * / in.	CHECKED -	REVISED -		SCALE: N/A			CONTRACT NO. 68K52				
	PLOT DATE = 9/11/2025	DATE -	REVISED -		SHEET 2 OF 2 SHEETS			ILLINOIS FED. AID PROJECT				



MODEL: Default  
FILE NAME: P:\2023\23098AW - FAI 74 Landscaping (FY 2026)\4. CADD - DWG\4.7 Tran\CADD Sheets\I468K52-sht-cover.dgn

USER NAME = dllee	DESIGNED -	REVISED -
	DRAWN -	REVISED -
PLOT SCALE = 78.6960' = 1 in.	CHECKED -	REVISED -
PLOT DATE = 9/11/2025	DATE -	REVISED -

STATE OF ILLINOIS  
DEPARTMENT OF TRANSPORTATION

OVERALL PLAN

SCALE: NTS      SHEET 1      OF 1      SHEETS      STA.      TO STA.

F.A.I. RTE.	SECTION	COUNTY	TOTAL SHEETS	SHEET NO.
74	72(8.9.9-1)LS-17	PEORIA	17	7
CONTRACT NO. 68K52				
ILLINOIS FED. AID PROJECT				

NOTE: Stamped stations on pavement are in the metric system.

PPC 1-1 (3487 SY) WILL CONSIST OF ONE MOWING ON OR AFTER OCTOBER 1 AND INCLUDES WEED WHACKING/HAND PULLING SPOTS OF CANADIAN THISTLE AND TEASEL. SPOT SPRAY OF GLYPHOSATE AS APPROVED BY THE ROADSIDE MANAGER. (COST INCLUDED WITH PERENNIAL PLANT CARE).



HIGH SCHOOL PARKING LOT

PPC OF THIS BED INCLUDES WEED WHACKING/HAND PULLING SPOTS OF CANADIAN THISTLE AND TEASEL. SPOT SPRAY OF GLYPHOSATE AS APPROVED BY THE ROADSIDE MANAGER.

NO MULCH

MOWING (SPECIAL) AREA 1-1  
0.3284 ACRE

PEORIA  
CENTRAL  
HIGH SCHOOL

PPC 1-1 3487 SY

ELLIS STREET

148+200

I-74 WESTBOUND

148+300

I-74 EASTBOUND

148+400

NORTH STREET

MOWING (SPECIAL) AREA LAYOUT 1 = 0.52 ACRES

MOWING (SPECIAL) AREA 1-2  
0.1936 ACRE

LEGEND

- MOWING (SPECIAL)
- SHRUBS
- EVERGREEN TREE
- SMALL ORNAMENTAL TREE

- SHADE TREE (5' DIA. MULCH SAUCER-TYP. -FOR ALL TREES & SHRUBS)
- PERENNIAL PLANT CARE (PPC)
- PLANT KEY QUANTITY OF SPECIFIED PLANT

- SHRUB CARE
- SHRUBS DENOTED WITH AN \* SHALL BE TRIMMED TO 5'
- SELECTIVE CLEARING

MODEL: Default  
FILE NAME: P:\2023\2309BAW - FAI 74 Landscaping (FY 2023)4\_CADD - DWG\4.7 Tran\CADD Sheets\68K52-sht-cover.dgn

USER NAME = dllee	DESIGNED -	REVISED -
	DRAWN -	REVISED -
PLOT SCALE = 78,6960' = 1 in.	CHECKED -	REVISED -
PLOT DATE = 9/11/2025	DATE -	REVISED -

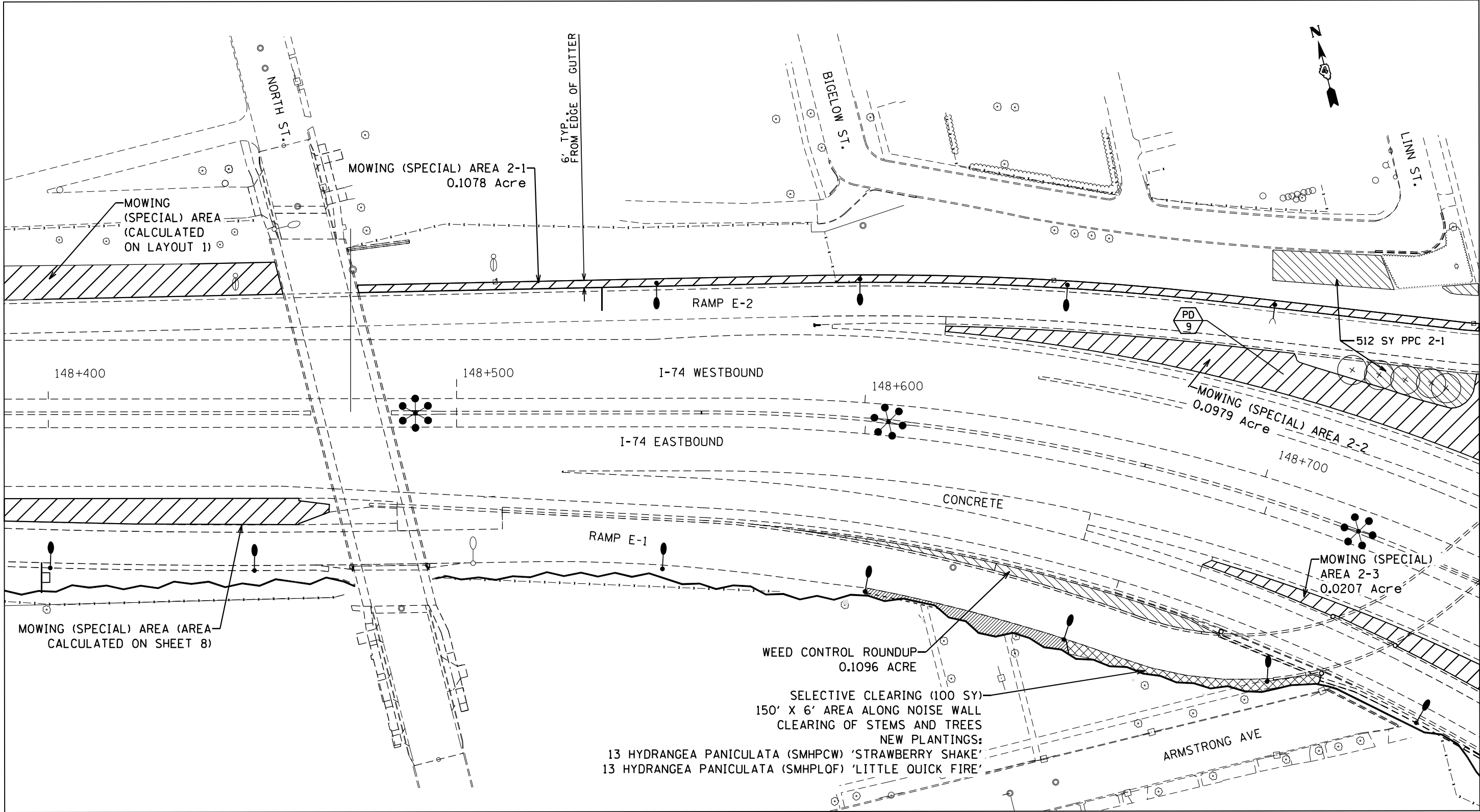
STATE OF ILLINOIS  
DEPARTMENT OF TRANSPORTATION

PLAN SHEET - LAYOUT 1

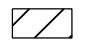
SCALE: NTS    SHEET 1    OF 7    SHEETS    STA.    TO STA.

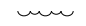
F.A.I. RTE.	SECTION	COUNTY	TOTAL SHEETS	SHEET NO.
74	72(8.9.9-1)LS-17	PEORIA	17	8
CONTRACT NO. 68K52				
ILLINOIS FED. AID PROJECT				









LEGEND

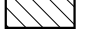
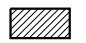
-  MOWING (SPECIAL)


 SHRUBS


 EVERGREEN TREE

 SMALL ORNAMENTAL TREE
-  SHADE TREE (5' DIA. MULCH SAUCER-TYP. -FOR ALL TREES & SHRUBS)

 PERENNIAL PLANT CARE (PPC)

 PLANT KEY QUANTITY OF SPECIFIED PLANT
-  SHRUB CARE

 SHRUBS DENOTED WITH AN • SHALL BE TRIMMED TO 5'

 SELECTIVE CLEARING

MOWING (SPECIAL) AREA LAYOUT 2 = 0.23 ACRES  
WEED CONTROL ROUND UP = 0.11 ACRES  
SELECTIVE CLEARING = 100 SY

MODEL: D:\p020323098\AW - FAI 74 Landscaping (FY 2025)\4. CADD - DWG\4.7 Tran\CADD Sheets\DWG\K52-shr-cover.dgn  
FILE NAME: P020323098\AW - FAI 74 Landscaping (FY 2025)\4. CADD - DWG\4.7 Tran\CADD Sheets\DWG\K52-shr-cover.dgn

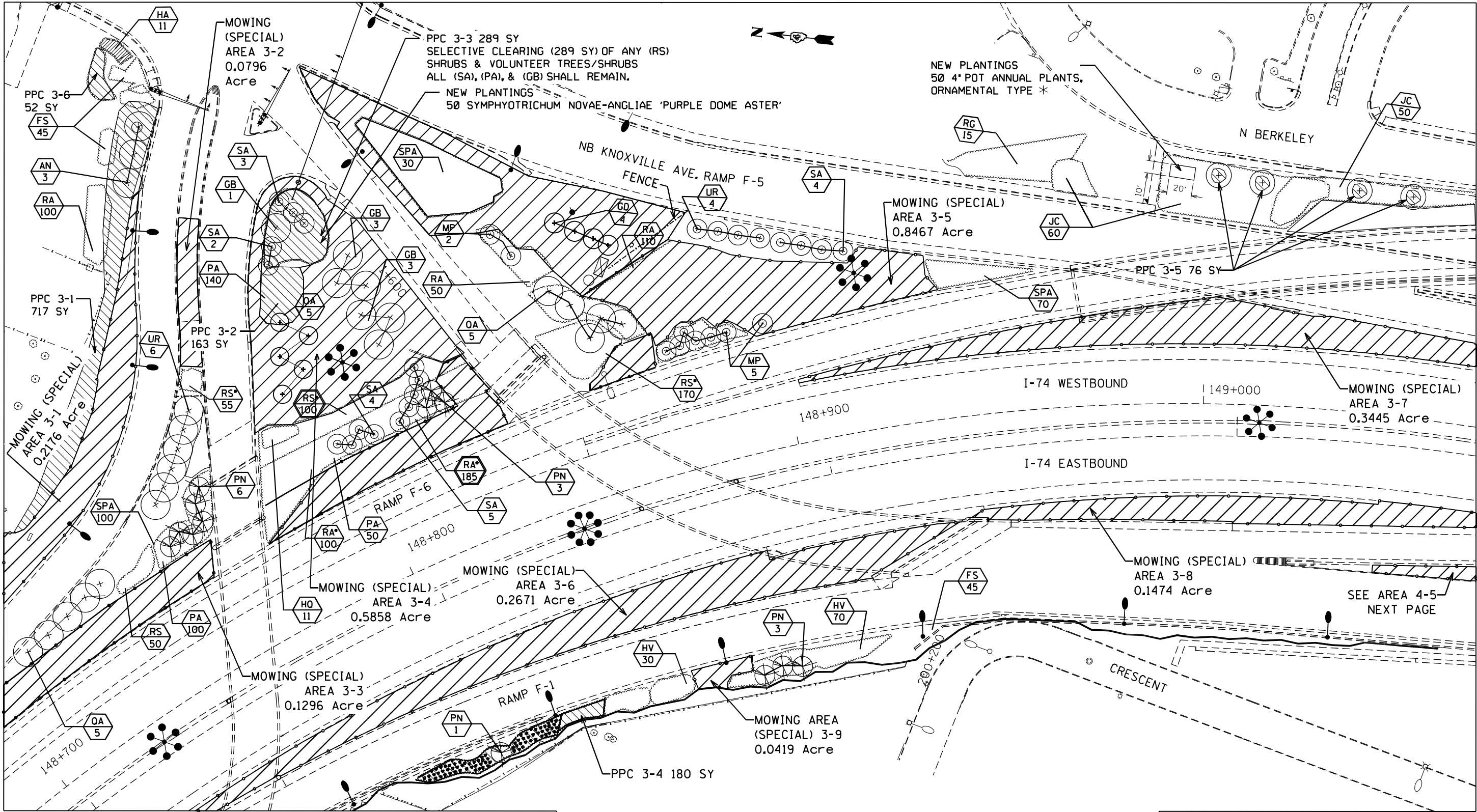
USER NAME = dllee	DESIGNED -	REVISED -
	DRAWN -	REVISED -
PLOT SCALE = 78,6960' = 1 in.	CHECKED -	REVISED -
PLOT DATE = 9/11/2025	DATE -	REVISED -

STATE OF ILLINOIS  
DEPARTMENT OF TRANSPORTATION

PLAN SHEET - LAYOUT 2

SCALE: NTS    SHEET 2    OF 7    SHEETS    STA.    TO STA.

F.A.I. RTE.	SECTION	COUNTY	TOTAL SHEETS	SHEET NO.
74	72(8.9,9-1)LS-17	PEORIA	17	9
CONTRACT NO. 68K52				
ILLINOIS FED. AID PROJECT				



LEGEND

- |  |                       |  |  |  |   |
|--|-----------------------|--|--|--|---|
|  | MOWING (SPECIAL)      |  | SHADE TREE (5' DIA. MULCH SAUCER-TYP. -FOR ALL TREES & SHRUBS) |  | SHRUB CARE                                      |
|  | SHRUBS                |  | PERENNIAL PLANT CARE (PPC)                                     |  | SHRUBS DENOTED WITH AN * SHALL BE TRIMMED TO 5' |
|  | EVERGREEN TREE        |  | PLANT KEY QUANTITY OF SPECIFIED PLANT                          |  | SELECTIVE CLEARING                              |
|  | SMALL ORNAMENTAL TREE |  |  |  |   |

VOLUNTEER TREES SHALL BE REMOVED IN AREAS OF PPC. COST INCLUDED WITH PERENNIAL PLANT CARE.

MOWING (SPECIAL) AREA LAYOUT 3 - 2.66 ACRES  
SELECTIVE CLEARING - 289 SY

\* ANNUAL 4" POTTED PLANTS TO BE DETERMINED BY THE ROADSIDE MANAGER

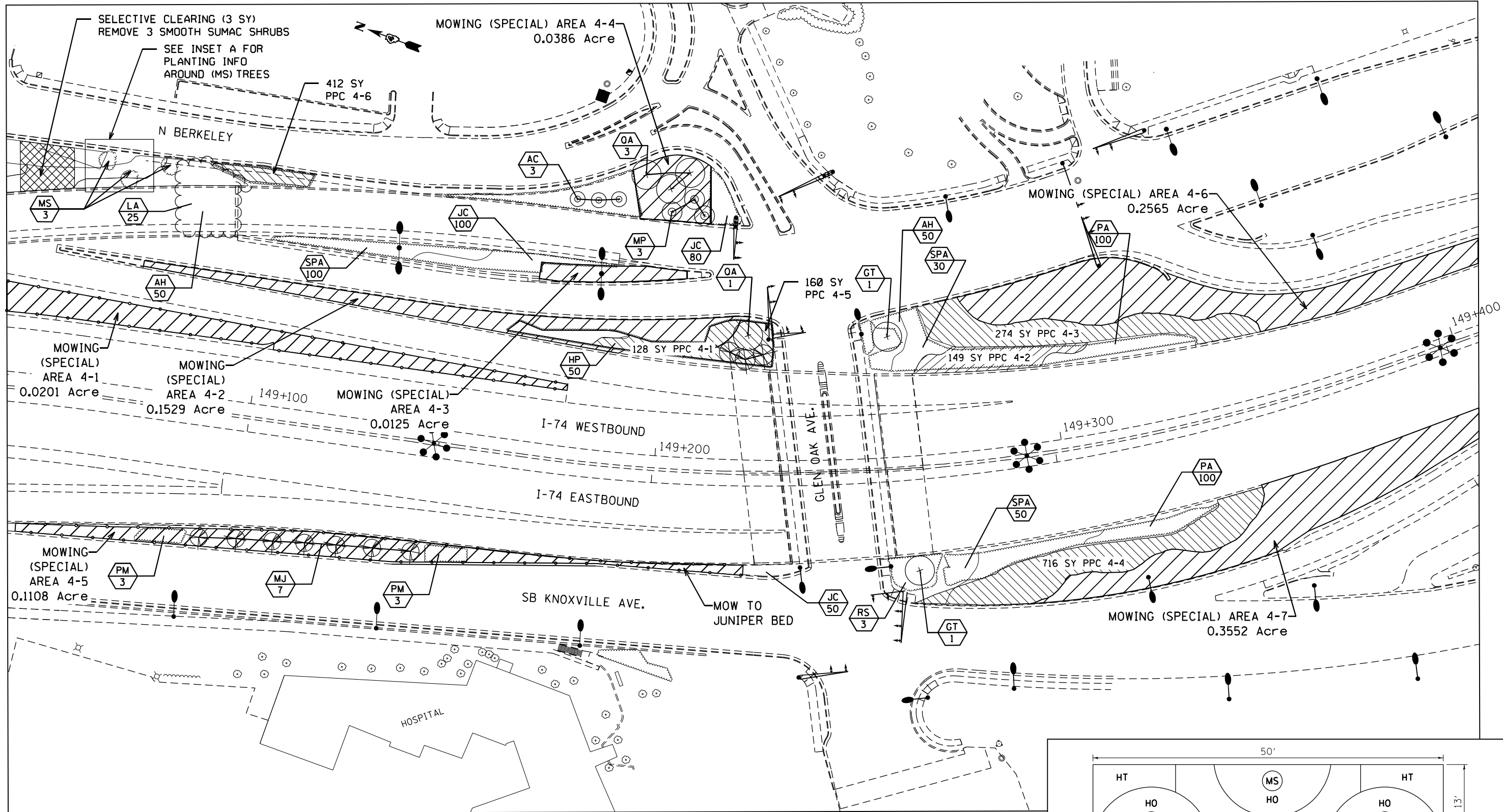
STATE OF ILLINOIS  
DEPARTMENT OF TRANSPORTATION

PLAN SHEET - LAYOUT 3

SCALE: NTS SHEET 3 OF 7 SHEETS STA. TO STA.

F.A.I. RTE.	SECTION	COUNTY	TOTAL SHEETS	SHEET NO.
74	72(8,9,9-1)LS-17	PEORIA	17	10
CONTRACT NO. 68K52				
ILLINOIS FED. AID PROJECT				

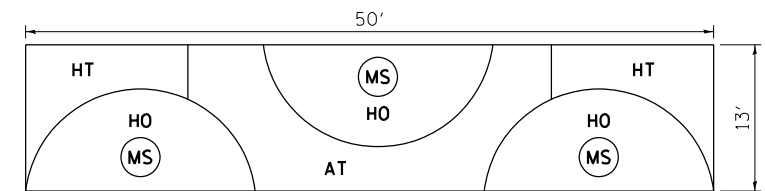
MODEL: D:\p020323098\AW - FAI 74 Landscaping (FY 2025)\4. CADD - DWG\4.7 Tran\CADD Sheets\DWG\K52-shr-cover.dgn  
FILE NAME: P020323098\AW - FAI 74 Landscaping (FY 2025)\4. CADD - DWG\4.7 Tran\CADD Sheets\DWG\K52-shr-cover.dgn



LEGEND

- |                       |  |   |
|-----------------------|--|---|
| MOWING (SPECIAL)      | SHADE TREE (5' DIA. MULCH SAUCER-TYP. -FOR ALL TREES & SHRUBS) | SHRUB CARE                                      |
| SHRUBS                | PERENNIAL PLANT CARE (PPC)                                     | SHRUBS DENOTED WITH AN * SHALL BE TRIMMED TO 5' |
| EVERGREEN TREE        | PLANT KEY QUANTITY OF SPECIFIED PLANT                          | SELECTIVE CLEARING                              |
| SMALL ORNAMENTAL TREE |  |   |

MOWING AREA LAYOUT 4 - 0.95 ACRES  
SELECTIVE CLEARING - 3 SY



- AT ASCLEPIAS TUBEROSA 'BUTTERFLY WEED'  
HO HEUCHERA X OBSIDIAN 'OBSIDIAN HEUCHERA'  
HT HYLOTELEPHIUM TELEPHIUM 'AUTUMN JOY SEDUM'  
MS MALUS SARGENTII 'SARGENT CRABAPPLE' (EXISTING)

INSET A

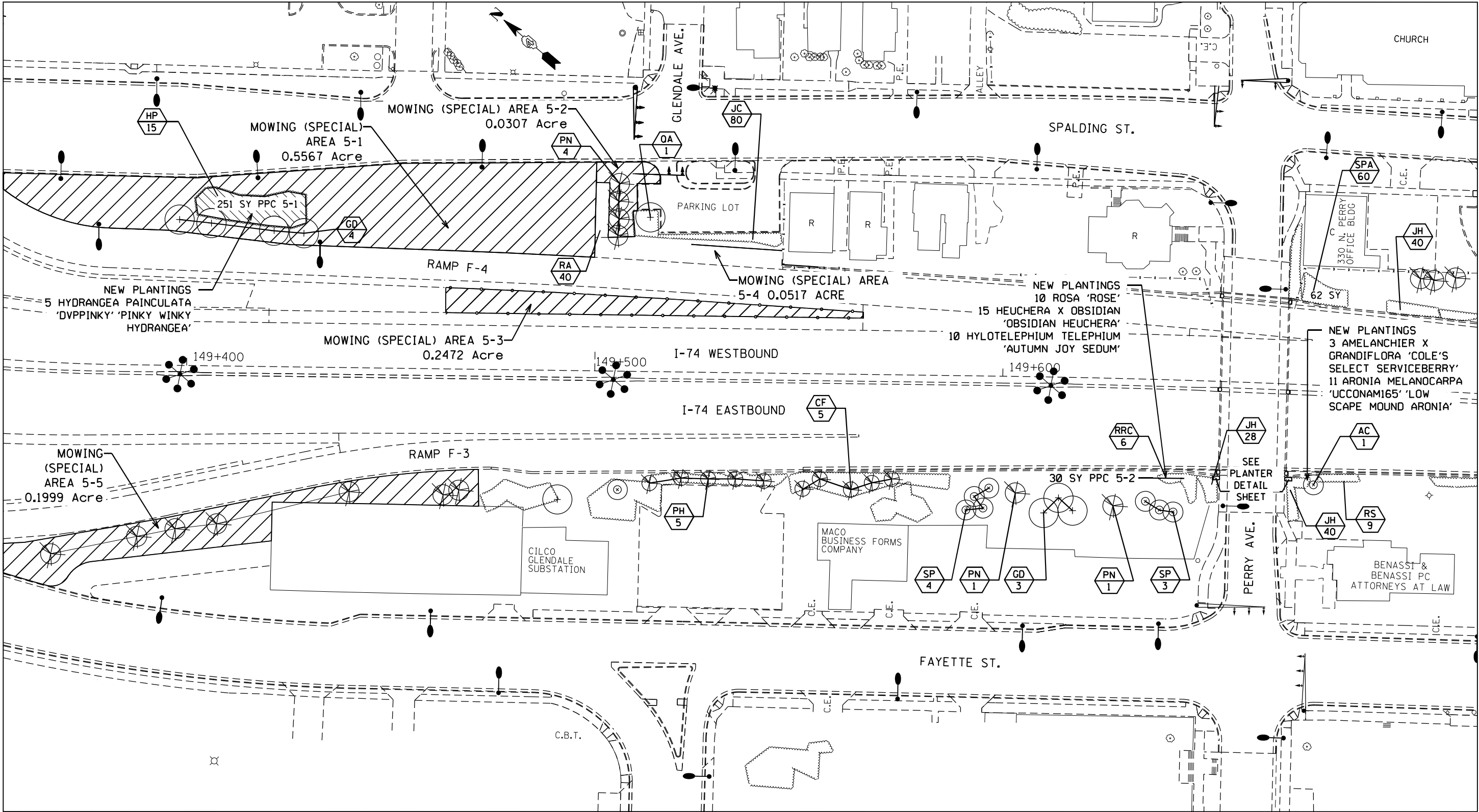
USER NAME = dlee	DESIGNED -	REVISED -
PLOT SCALE = 78,6960' / in.	DRAWN -	REVISED -
PLOT DATE = 9/11/2025	CHECKED -	REVISED -
	DATE -	REVISED -

STATE OF ILLINOIS  
DEPARTMENT OF TRANSPORTATION

PLAN SHEET - LAYOUT 4

SCALE: NTS SHEET 4 OF 7 SHEETS STA. TO STA.

F.A.I. RTE.	SECTION	COUNTY	TOTAL SHEETS	SHEET NO.
74	72(8,9,9-1)LS-17	PEORIA	17	11
CONTRACT NO. 68K52				
ILLINOIS FED. AID PROJECT				



MOWING AREA LAYOUT 5 - 1.09 ACRES

LEGEND

- |                       |  |   |
|-----------------------|--|---|
| MOWING (SPECIAL)      | SHADE TREE (5' DIA. MULCH SAUCER-TYP. -FOR ALL TREES & SHRUBS) | SHRUB CARE                                      |
| SHRUBS                | PERENNIAL PLANT CARE (PPC)                                     | SHRUBS DENOTED WITH AN * SHALL BE TRIMMED TO 5' |
| EVERGREEN TREE        | PLANT KEY QUANTITY OF SPECIFIED PLANT                          | SELECTIVE CLEARING                              |
| SMALL ORNAMENTAL TREE |  |   |

STATE OF ILLINOIS  
DEPARTMENT OF TRANSPORTATION

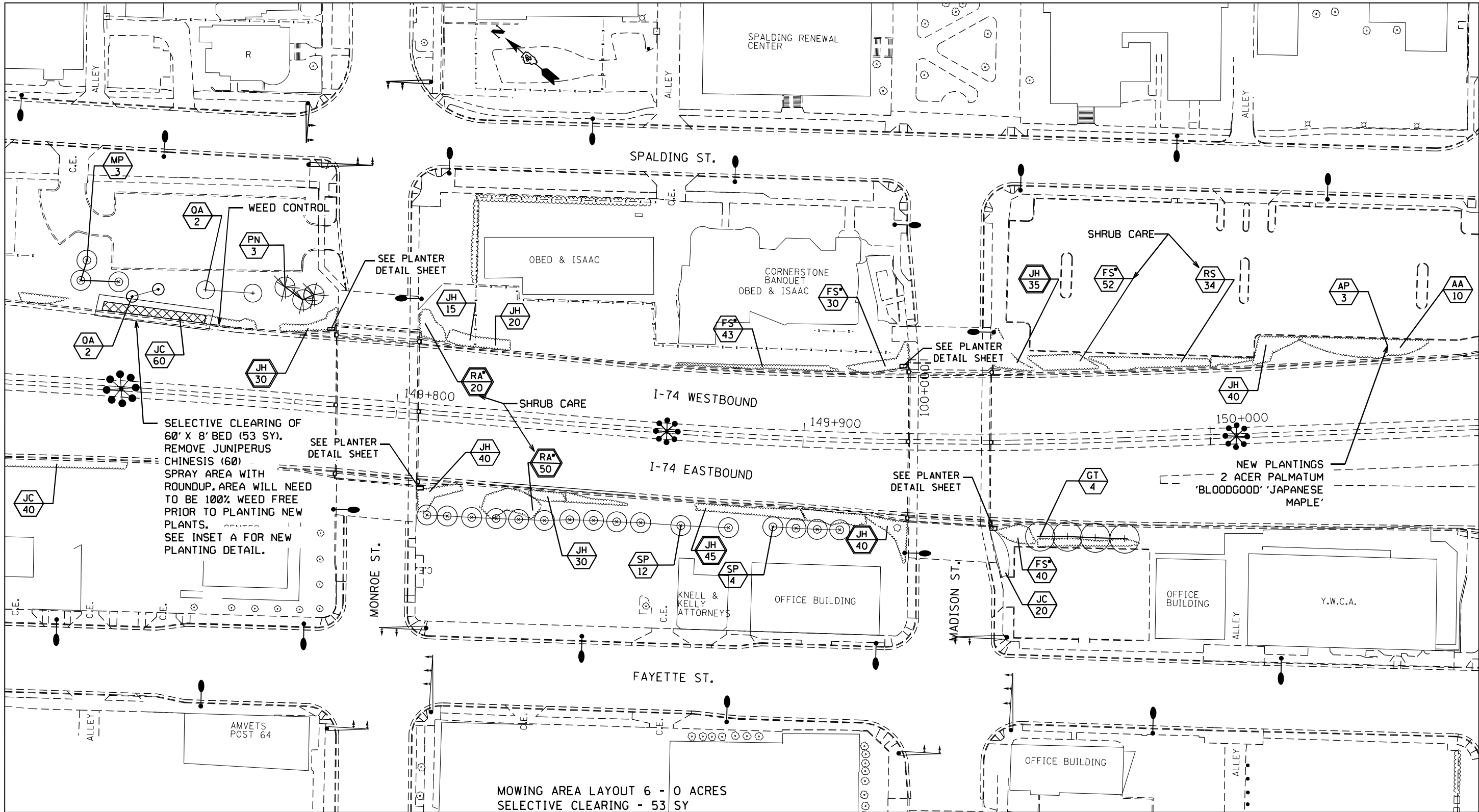
PLAN SHEET - LAYOUT 5

SCALE: NTS SHEET 5 OF 7 SHEETS STA. TO STA.

F.A.I. RTE.	SECTION	COUNTY	TOTAL SHEETS	SHEET NO.
74	72(8,9,9-1)LS-17	PEORIA	17	12
CONTRACT NO. 68K52				
ILLINOIS FED. AID PROJECT				

MODEL: D:\p0203\23098AW - FAI 74 Landscaping (FY 2025)4 CADD - DWG\4.7 Tran\CADD Sheets\68K52-sht-cover.dgn  
FILE NAME: P0203\23098AW - FAI 74 Landscaping (FY 2025)4 CADD - DWG\4.7 Tran\CADD Sheets\68K52-sht-cover.dgn





LEGEND

- MOWING (SPECIAL)
- SHRUBS
- EVERGREEN TREE
- SMALL ORNAMENTAL TREE
- SHADE TREE (5' DIA. MULCH SAUCER-TYP. -FOR ALL TREES & SHRUBS)
- PERENNIAL PLANT CARE (PPC)
- PLANT KEY QUANTITY OF SPECIFIED PLANT
- SHRUB CARE
- SHRUBS DENOTED WITH AN \* SHALL BE TRIMMED TO 5'
- SELECTIVE CLEARING

SHRUB CARE FOR BOTH SIDES OF INTERSTATE FOR PLANTS STICKING THROUGH FENCE. TRIM ALL FS TO 5' (COST INCLUDED WITH SHRUB CARE)

JUNIPER SHRUB BEDS NEED ANY SAPLING TREES HAND PULLED PRIOR TO PRE-EMERGENT.

- (10) X CHAMAECYPARIS LAWSONIANA 'BLUE FALSE CYPRESS' 5' X 15'

(7) O ILEX X MESERVEAE 'HACHFEE' 'CASTLE SPIRE MESERVE HOLLY' 5' X 10'

(2) - ILEX X MESERVEAE 'HECKENSTAR' 'CASTLE WALL MESERVE HOLLY' 5' X 8'

INSET A

USER NAME = dlce	DESIGNED -	REVISED -
	DRAWN -	REVISED -
PLOT SCALE = 78,6960' / in.	CHECKED -	REVISED -
PLOT DATE = 9/11/2025	DATE -	REVISED -

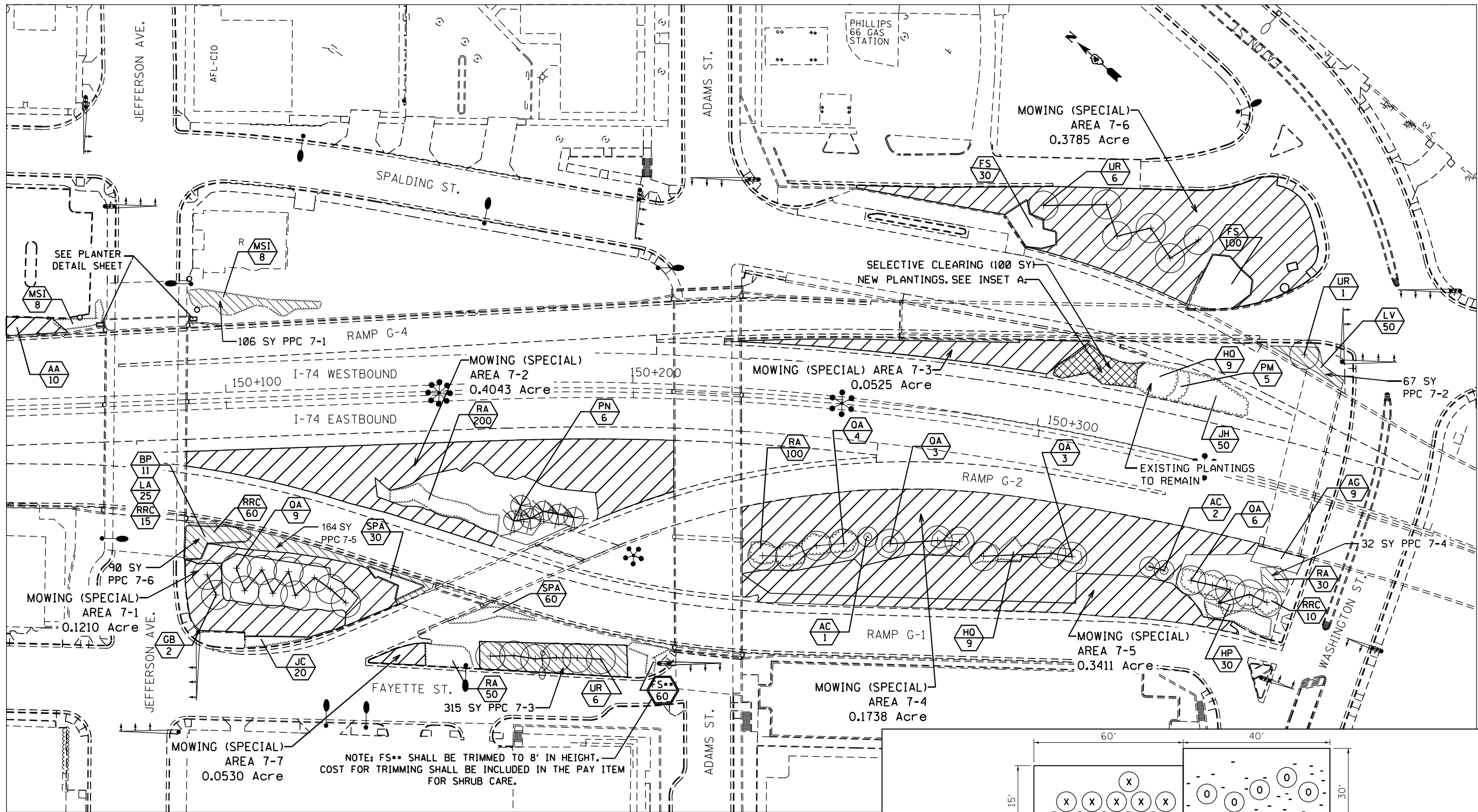
STATE OF ILLINOIS  
DEPARTMENT OF TRANSPORTATION

PLAN SHEET - LAYOUT 6

SCALE: NTS SHEET 6 OF 7 SHEETS STA. TO STA.

F.A.I. RTE.	SECTION	COUNTY	TOTAL SHEETS	SHEET NO.
74	72(8,9,9-1)LS-17	PEORIA	17	13
CONTRACT NO. 68K52				
ILLINOIS FED. AID PROJECT				

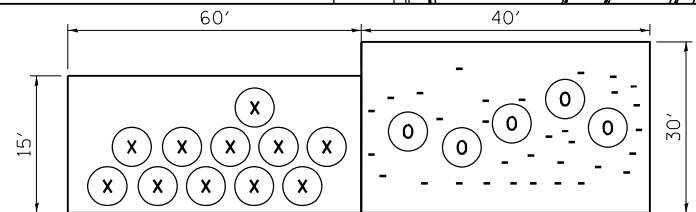
MODEL: Defaul  
FILE NAME: P:\2023\23098AW - FAI 74 Landscaping (FY 2025) CAD - DWG\4.7 Tran\CADD Sheets\DWG\K52-shr-cover.dgn



LEGEND

- |  |                       |  |  |  |   |
|--|-----------------------|--|--|--|---|
|  | MOWING (SPECIAL)      |  | SHADE TREE (5' DIA. MULCH SAUCER-TYP. -FOR ALL TREES & SHRUBS) |  | SHRUB CARE                                      |
|  | SHRUBS                |  | PERENNIAL PLANT CARE (PPC)                                     |  | SHRUBS DENOTED WITH AN • SHALL BE TRIMMED TO 5' |
|  | EVERGREEN TREE        |  | PLANT KEY QUANTITY OF SPECIFIED PLANT                          |  | SELECTIVE CLEARING                              |
|  | SMALL ORNAMENTAL TREE |  |  |  |   |

MOWING AREA LAYOUT 7 - 1.52 ACRES  
SELECTIVE CLEARING - 100 SY



- (11) X JUNIPERUS SCOPULORUM 'MOONGLOW' 'MOONGLOW JUNIPER'  
(5) O ILEX X MESERVEAE 'HACHFEE' 'CASTLE SPIRE MESERVE HOLLY'  
(31) - ARONIA MELANOCARPA 'UCCONAMI65' 'LOW SCAPE MOUND ARONIA'

INSET A

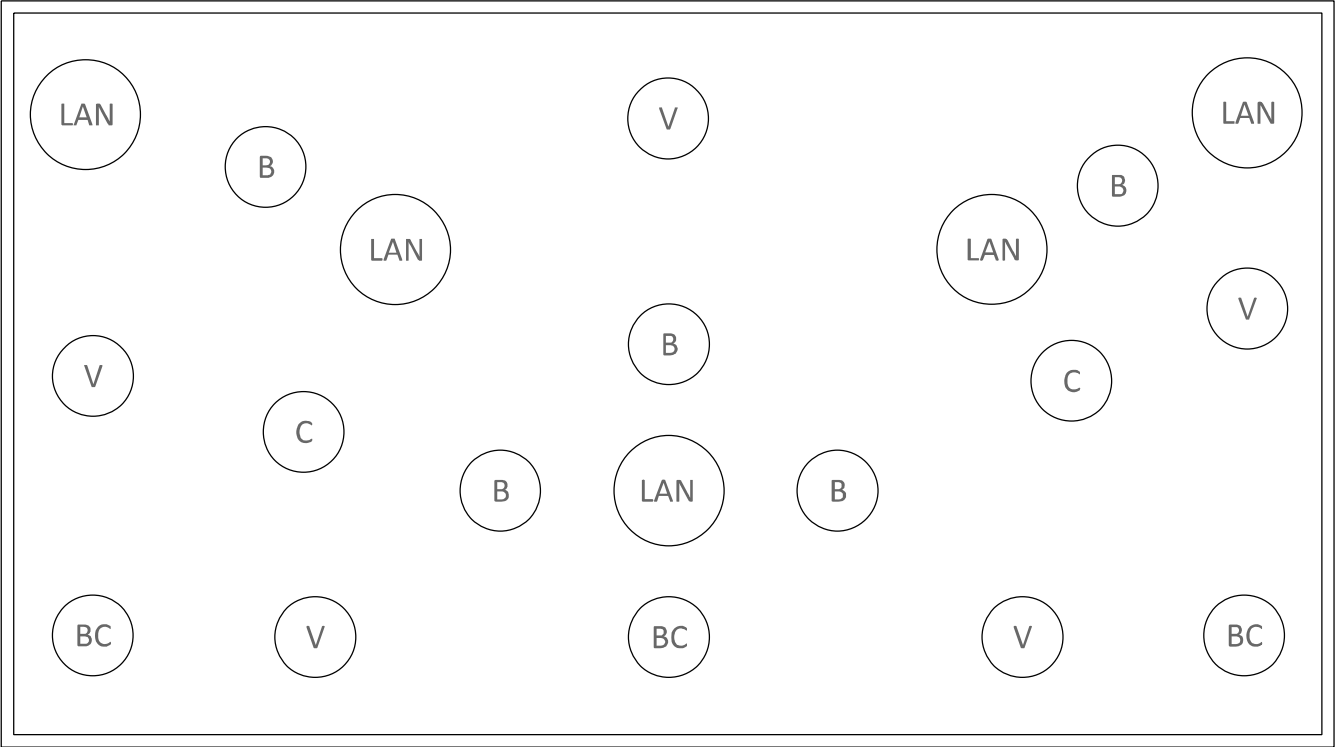
USER NAME	= dlee	DESIGNED	-	REVISED	-
DRAWN	-	REVIS	-	REVIS	-
PLOT SCALE	= 78,8960' / in.	CHECKED	-	REVISED	-
PLOT DATE	= 9/11/2025	DATE	-	REVISED	-

STATE OF ILLINOIS  
DEPARTMENT OF TRANSPORTATION

PLAN SHEET - LAYOUT 7

SCALE: NTS SHEET 7 OF 7 SHEETS STA. TO STA.

F.A.I. RTE.	SECTION	COUNTY	TOTAL SHEETS	SHEET NO.
74	72(8,9-1)LS-17	PEORIA	17	14
CONTRACT NO. 68K52				
ILLINOIS FED. AID PROJECT				



LEGEND

- BC

Burgandy Coleus (3 Each Planter)
- B

Begonia (Dragon Wing Pink) (5 Each Planter)
- V

Angelonia (Verana White) (5 Each Planter)
- LAN

Lantana (Multi-Color) (5 Each Planter)
- C

Canna (Tropicanna Gold) (2 Each Planter)

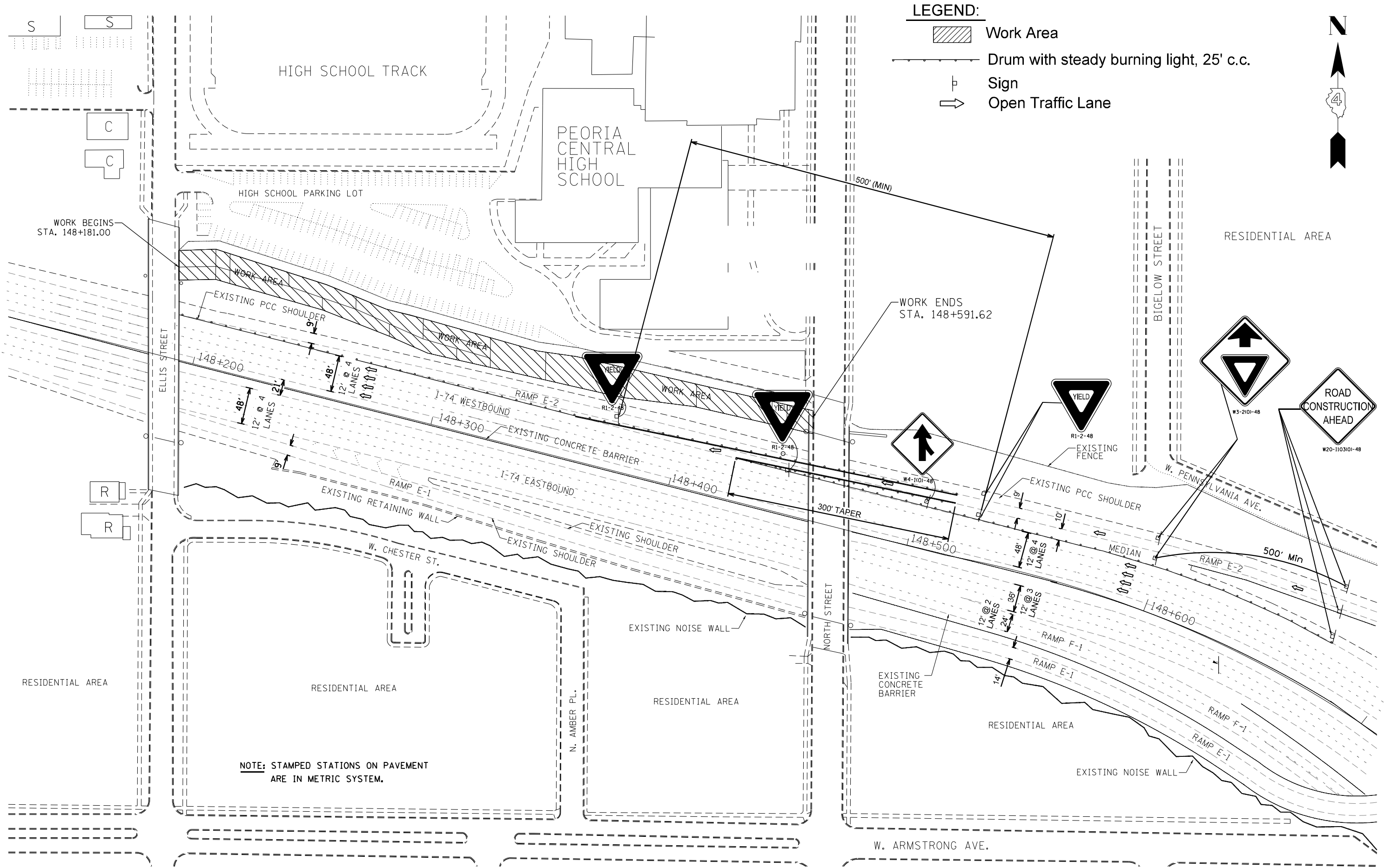
PLANTER LOCATIONS:

2 at Perry Avenue (Layout 5)  
2 at Monroe Street (Layout 6)  
2 at Madison Street (Layout 6)  
2 at Jefferson Avenue (Layout 7)

MODEL: Default  
FILE NAME: P:\2023\2309BAW - FAI 74 Landscaping (FY 2025)\4\_CADD - DWG\4.7\_Trip\CADD\_Sheet\DA68K52-sht-cover.dgn

	USER NAME = dllee	DESIGNED -	REVISED -	STATE OF ILLINOIS DEPARTMENT OF TRANSPORTATION	PLANTER DETAIL			F.A.I. RTE.	SECTION	COUNTY	TOTAL SHEETS	SHEET NO.
		DRAWN -	REVISED -					74	72(8,9,9-1)LS-17	PEORIA	17	15
	PLOT SCALE = 78,6960 * / in.	CHECKED -	REVISED -					CONTRACT NO. 68K52				
	PLOT DATE = 9/11/2025	DATE -	REVISED -		SCALE: N/A	SHEET 1	OF 1 SHEETS	STA.	TO STA.	ILLINOIS FED. AID PROJECT		

MODEL: D:\p4\11  
FILE NAME: P:\2023\230981W - FAI 74 Landscaping (FY 2026)4 CADD - DWG\4.7 Tran\CADD Sheets\0468K52-2-1-cover.dgn



DRAWING NOT TO SCALE

STATE OF ILLINOIS  
DEPARTMENT OF TRANSPORTATION

TRAFFIC CONTROL PLAN - LAYOUT 1

SCALE: NTS SHEET 1 OF 1 SHEETS STA. TO STA.

F.A.I. RTE.	SECTION	COUNTY	TOTAL SHEETS	SHEET NO.
74	72(8,9,9-1)LS-17	PEORIA	17	16
CONTRACT NO. 68K52				
ILLINOIS FED. AID PROJECT				



MODEL: Default  
FILE NAME: P:\2023\2098A\W - FAI 71 Landscaping FY 2026\4 CADD - DWG\4.7 Tran\CADD Sheets\DWG\63>shbcover.dgn

HERBICIDE DOSAGE CHART				
WATER	MILESTONE VM*	DRIFT CONTROL**	NON-IONIC SURFACTANT***	ACRES OF R.O.W.
(GALLONS)	(OZ.)	(OZ.)	(PINTS)	ACRE
40	6	3.2	0.8	1
50	7.5	4	1	1.25
100	15	8	2	2.5
200	30	16	4	5
300	45	24	6	7.5
400	60	32	8	10
500	75	40	10	12.5
600	90	48	12	15
700	105	56	14	17.5
800	120	64	16	20
900	135	72	18	22.5
1000	150	80	20	25
1100	165	88	22	27.5
1200	180	96	24	30
1300	195	104	26	32.5
1400	210	112	28	35
1500	225	120	30	37.5

- \* BASED ON 6 OUNCES OF MILESTONE VM FOR EACH 1.0 ACRE
- \*\* BASED ON 8 OUNCES OF DRIFT CONTROL AGENT PER 100 GALLONS
- \*\*\* BASED ON 2 PINTS OF NON-IONIC SURFACTANT FOR EACH 100 GALLONS OF WATER

- Notes:
1. Suggested rate of water per acre. Refer to product label for verification.
2. Spraying machine shall be calibrated to deliver 6 oz of herbicide per acre 72 hr prior to job start.
3. Spot checks will be performed to check for herbicide delivery accuracy.

WEED SPRAYING NOTES:

Some Perennial plants are located in the weed spray location. Removal of all vegetation and debris except for Perennial Plants shall be completed prior to weed spraying. This work shall be included in the pay item for PERENNIAL PLANT CARE.

Weed Spraying must be completed at the beginning of the contract. No planting can be completed until after two weeks have passed. The Roadside Manager must approve of planting start dates.

See Milestone Dosing Chart.

FOR INFORMATION IN CASE OF  
A CHEMICAL EMERGENCY CALL:

DOW AGRO AT 1-800-263-1196

	USER NAME = dlee	DESIGNED -	REVISED -	STATE OF ILLINOIS DEPARTMENT OF TRANSPORTATION	HERBICIDE DOSAGE CHART				F.A.I RTE.	SECTION	COUNTY	TOTAL SHEETS	SHEET NO.
		DRAWN -	REVISED -						74	72(8,9,9-1)LS-17	PEORIA	17	17
	PLOT SCALE = 78,6960 ' / in.	CHECKED -	REVISED -						CONTRACT NO. 68K52				
	PLOT DATE = 9/11/2025	DATE -	REVISED -						ILLINOIS   FED. AID PROJECT				
									SCALE: N/A	SHEET 1	OF 1	SHEETS	STA.