

INDEX OF SHEETS

- 1. COVER SHEET
- 2. GENERAL NOTES
- 3. SUMMARY OF QUANTITIES
- 4. TYPICAL SECTIONS
- 5. TRAFFIC CONTROL DETAILS
- 6. TEMPORARY BARRIER WALL / GUARDRAIL DELINEATION
- 7. TEMPORARY INFORMATION SIGNING

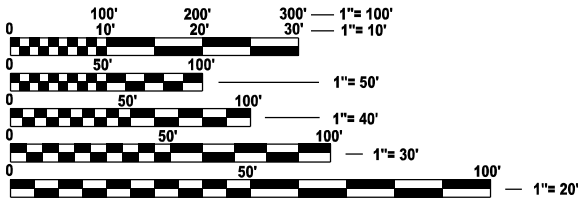
HIGHWAY STANDARDS

- 000001- 09 STANDARD SYMBOLS, ABBREVIATIONS AND PATTERNS
- 001006 DECIMAL OF AN INCH AND OF A FOOT
- 701001-02 OFF-ROAD OPERATIONS 2L, 2W, MORE THAN 15' AWAY
- 701006-05 OFF-ROAD OPERATIONS 2L, 2W, 15' TO 24" FROM PAVEMENT EDGE
- 701201-05 LANE CLOSURE, 2L, 2W, DAY ONLY, FOR SPEEDS ≥ 45 MPH
- 701301-04 LANE CLOSURE, 2L, 2W, SHORT TIME OPERATIONS
- 701321-19 LANE CLOSURE, 2L, 2W, BRIDGE REPAIR WITH BARRIER
- 701901- 11 TRAFFIC CONTROL DEVICES
- 704001-08 TEMPORARY CONCRETE BARRIER

STATE OF ILLINOIS
DEPARTMENT OF TRANSPORTATION

PROPOSED
HIGHWAY PLANS
F.A.P. ROUTE 587 (IL 92)
SECTION (140BR-2)BP
PROJECT STP-6K68(774)
BRIDGE PAINTING
BUREAU COUNTY
C-93-154-25

PROJECT LOCATION
STRUCTURE NO. 006-0101
CARRYING F.A.P. ROUTE 587 (IL 92)
OVER A BRANCH OF MASTERS CREEK
0.7 MI. WEST OF VAN ORIN



FULL SIZE PLANS HAVE BEEN PREPARED USING STANDARD
ENGINEERING SCALES. REDUCED SIZED PLANS WILL NOT
CONFORM TO STANDARD SCALES. IN MAKING MEASUREMENTS
ON REDUCED PLANS, THE ABOVE SCALES MAY BE USED.

J.U.L.I.E.
JOINT UTILITY LOCATION INFORMATION FOR EXCAVATION
1-800-892-0123
OR 811

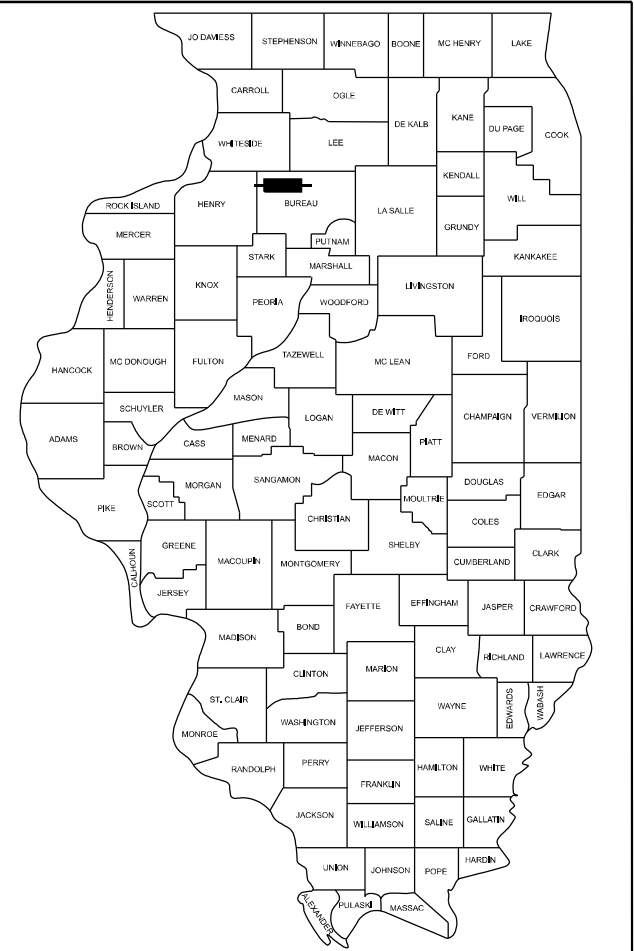
PROJECT ENGINEER JUNIOR SENAT P.E.
UNIT CHIEF RON WOODSHANK
DISTRICT 3 (815) 434-6131
CONTRACT NO. 66R91



POINT LOCATION

F.A.P. RTE.	SECTION	COUNTY	TOTAL SHEETS	SHEET NO.
587	(140BR-2)BP	BUREAU	7	1
ILLINOIS		CONTRACT NO. 66R91		

D-93-116-25



LOCATION OF SECTION INDICATED THUS: -

FUNCTIONAL CLASSIFICATION
RURAL - MINOR ARTERIAL
F.A.P. ROUTE 587 (IL ROUTE 92)
2023 ADT = 650
P.V. 86.0 % S.U. 5.0 % M.U. 9.0 %

STATE OF ILLINOIS
DEPARTMENT OF TRANSPORTATION

SUBMITTED October 16, 2025
Trisha Thompson REGIONAL ENGINEER

December 5, 2025
Scott A. Etkin ENGINEER OF DESIGN AND ENVIRONMENT

December 5, 2025
John J. Barry DIRECTOR OF HIGHWAYS PROJECT IMPLEMENTATION

PRINTED BY THE AUTHORITY
OF THE STATE OF ILLINOIS

GENERAL NOTES

PLAN DIMENSIONS AND DETAILS RELATIVE TO THE EXISTING STRUCTURE HAVE BEEN TAKEN FROM EXISTING PLANS ARE SUBJECT TO NOMINAL CONSTRUCTION VARIATIONS. THE CONTRACTOR SHALL FIELD VERIFY EXISTING DIMENSIONS AND DETAILS AFFECTING NEW CONSTRUCTION AND MAKE NECESSARY APPROVED ADJUSTMENTS PRIOR TO CONSTRUCTION OR ORDERING OF MATERIALS. SUCH VARIATIONS SHALL NOT BE CAUSE FOR ADDITIONAL COMPENSATION FOR A CHANGE IN SCOPE OF THE WORK, HOWEVER, THE CONTRACTOR WILL BE PAID FOR THE QUANTITY ACTUALLY FURNISHED AT THE UNIT PRICE BID FOR THE WORK.

CLEANING AND PAINTING EXISTING STEEL / STRUCTURAL STEEL COMPONENTS

CLEANING AND PAINTING OF THE EXISTING STEEL / STRUCTURAL STEEL SHALL BE AS SPECIFIED IN THE SPECIAL PROVISION FOR "CLEANING AND PAINTING EXISTING STEEL STRUCTURES".

THE FOLLOWING STEEL / STRUCTURAL STEEL COMPONENTS SHALL BE CLEANED AND PAINTED.

- a) STRUCTURAL STEEL COMPONENTS

BEAMS / GIRDERS
STIFFENERS
DIAPHRAGMS
CROSS / LATERAL FRAMING
STEEL COMPONENTS OF BEARINGS
ANGLE BRACKETS / CLIPS
CONNECTION PLATES
ANCHORS / BOLTS
- b) STEEL COMPONENTS

DECK DRAINS (DOWN PIPES)
SCUPPERS (DOWN PIPES)
STEEL HANDRAILS (WHEN PRESENT)

OTHER STEEL / STRUCTURAL STEEL COMPONENTS WHEN PRESENT SHALL BE CLEANED AND PAINTED AS DIRECTED BY THE RESIDENT ENGINEER / TECHNICIAN.

STRUCTURE NO. 006-0101 SHALL BE CONSIDERED AS "LOCATION NO. 1".

EXISTING STRUCTURAL STEEL COATINGS FOR STRUCTURE NO. 006-0101 ARE "NON-LEAD" PAINT COATINGS.

SSPC QP1 "CONTRACTOR CERTIFICATION" IS REQUIRED FOR THIS STRUCTURE.
CONTAINMENT OF CLEANING RESIDUE IS REQUIRED TO CONTROL NUISANCE DUST.

CLEANING EXISTING STEEL / STRUCTURAL STEEL COMPONENTS

CLEANING ALL EXISTING STEEL / STRUCTURAL STEEL SHALL BE CLEANED PER NEAR WHITE BLAST CLEANING, "SSPC-SP10".

SEE THE SPECIAL PROVISION FOR "CONTAINMENT AND DISPOSL OF NON-LEAD PAINT CLEANING RESIDUES.

PAINTING EXISTING STEEL / STRUCTURAL STEEL COMPONENTS

ALL EXISTING STEEL / STRUCTURAL STEEL SHALL BE PAINTED ACCORDING TO THE REQUIREMENTS OF PAINT SYSTEM 1 - OZ/E/U.

- 1) THE COLOR OF THE FINAL FINISH COAT FOR ALL INTERIOR STEEL / STRUCTURAL STEEL SURFACES SHALL BE GRAY, MUNSELL NO 5B 7/1.
- 2) THE COLOR OF THE FINAL FINISH COAT FOR THE EXTERIOR AND BOTTOM FLANGE OF THE FASCIA BEAMS, STEEL COMPONENTS OF FASCIA BEARINGS, DECK DRAINS / SCUPPERS AND STEEL HANDRAILS (WHEN PRESENT) SHALL BE "GREEN, MUNSELL NO. 7.5G 1/2.

REMOVAL AND DISPOSAL OF CLEANING AND PAINTING RESIDUES

THE CONTRACTOR SHALL BE REQUIRED TO SECURE WASTE CONTAINERS THAT REMAIN ON THE JOB SITE. THIS WILL ENTAIL THAT ALL WASTE CONTAINERS CANNOT BE MOVED OR OPENED DURING NON-WORKING HOURS.

WORKING DAYS SHALL BE CHARGED UNTIL THE CONTRACTOR / SUBCONTRACTOR LISCENSED TO REMOVE AND DISPOSE OF NON-LEAD PAINT RESIDUES HAS REMOVED THE WASTE MATERIAL FROM THE JOB SITE ACCORDING TO ALL FEDERAL, STATE AND LOCAL ORDINANCES. IF THE CONTRACTOR / SUBCONTRACTOR FAILS TO REMOVE AND DISPOSE OF THE NON-LEAD PAINT RESIDUES WITHIN THE WORKING DAYS STIPULATED, LIQUIDATED DAMAGES SHALL BE CHARGED PER CALENDAR DAY ACCORDING TO ARTICLE 108.09 OF THE STANDARD SPECIFICATIONS UNTIL SUCH TIME THAT ALL PAINT RESRESUDUES HAVE BEEN REMOVED AND DISPOSED OF.

COMMITMENTS

NONE.

STATE OF ILLINOIS
DEPARTMENT OF TRANSPORTATION
DISTRICT THREE
AS BUILT INFORMATION

SUPERVISING CONSTRUCTION FIELD ENGINEER

RESIDENT ENGINEER / TECHNICIAN

START & END DATES
OF CONSTRUCTION:

INSPECTORS:

MODEL: Default
FILE NAME: c:\pwworking\woodshank\rd1130042\66R91.dgn

	USER NAME = ronald.woodshank	DESIGNED - RW	REVISED -	STATE OF ILLINOIS DEPARTMENT OF TRANSPORTATION	GENERAL NOTES			F.A.P. RTE.	SECTION	COUNTY	TOTAL SHEETS	SHEET NO.
		DRAWN - RW	REVISED -					587	(140BR-2)BP	BUREAU	7	2
		CHECKED - JS	REVISED -					CONTRACT NO. 66R91				
	PLOT DATE = 9/3/2025	DATE - 7/9/2025	REVISED -		SCALE:	SHEET 1	OF 1 SHEETS	STA.	TO STA.	ILLINOIS FED. AID PROJECT		

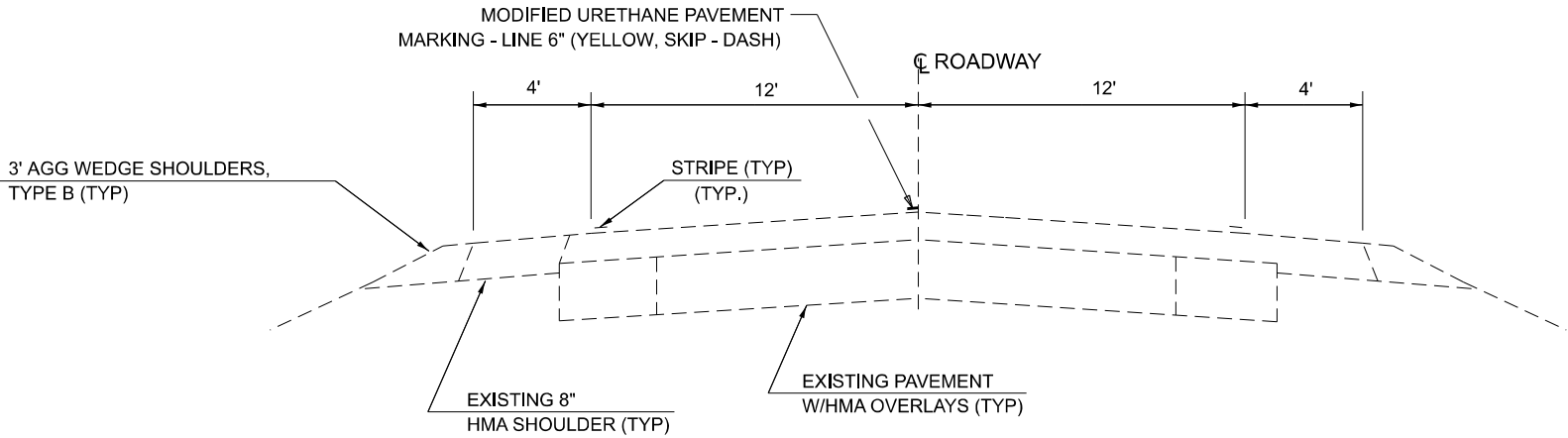
MODEL: Default
FILE NAME: c:\p\p_work\pwork\woodshank\td1130042\66R91.dgn

				CONSTRUCTION CODE
				BRIDGE PAINTING
				80% FED, 20% STATE
CODE NO.	ITEM	UNIT	TOTAL QUANTITY	BRIDGE
				0047
				S.N. 006-0101
67100100	MOBILIZATION	L SUM	1	1
70100405	TRAFFIC CONTROL AND PROTECTION, STANDARD 701321	EACH	1	1
70100450	TRAFFIC CONTROL AND PROTECTION, STANDARD 701201	L SUM	1	1
70106500	TEMPORARY BRIDGE TRAFFIC SIGNALS	EACH	1	1
70106700	TEMPORARY RUMBLE STRIPS	EACH	6	6
70400100	TEMPORARY CONCRETE BARRIER	FOOT	326	326
70600251	IMPACT ATTENUATORS, TEMPORARY (NON- REDIRECTIVE, NARROW), TEST LEVEL 3	EACH	2	2
* 78009006	MODIFIED URETHANE PAVEMENT MARKING - LINE 6"	FOOT	150	150
78300202	PAVEMENT MARKING REMOVAL - WATER BLASTING	SQ FT	75	75
X5060601	CONTAINMENT AND DISPOSAL OF NON-LEAD PAINT CLEANING RESIDUES NO. 1	L SUM	1	1
X5067501	BRIDGE CLEANING AND PAINTING WARRANTY NUMBER 1	L SUM	1	1
X7200061	TEMPORARY INFORMATION SIGNING	SQ FT	42	42
Z0010501	CLEANING AND PAINTING STEEL BRIDGE NO. 1	L SUM	1	1

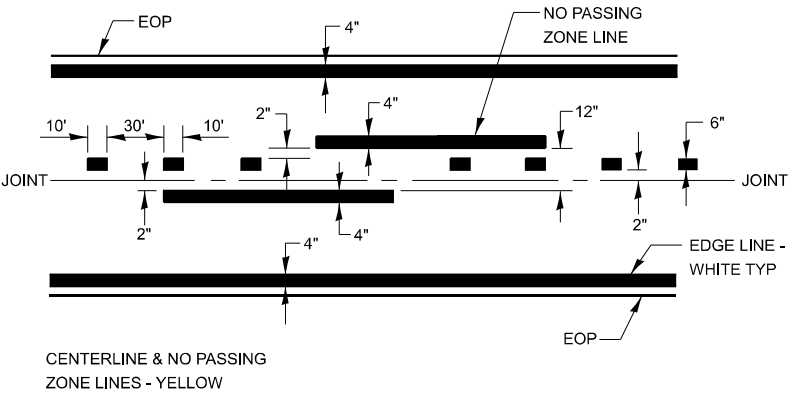
*SPECIALITY ITEMS

	USER NAME = ronald.woodshank	DESIGNED - RW	REVISED -	STATE OF ILLINOIS DEPARTMENT OF TRANSPORTATION	SUMMARY OF QUANTITIES			F.A.P. RTE.	SECTION	COUNTY	TOTAL SHEETS	SHEET NO.
		DRAWN - RW	REVISED -					587	(140BR-2)BP	BUREAU	7	3
		CHECKED - JS	REVISED -					CONTRACT NO. 66R91				
	PLOT DATE = 9/3/2025	DATE - 7/9/2025	REVISED -		SCALE:	SHEET 1 OF 1 SHEETS	STA.	TO STA.	ILLINOIS FED.AID PROJECT			

MODEL: Default
FILE NAME: c:\pwwork\pwwork\woodshank\1130042\66R91.dgn



PROPOSED TYPICAL SECTION
LOOKING EAST

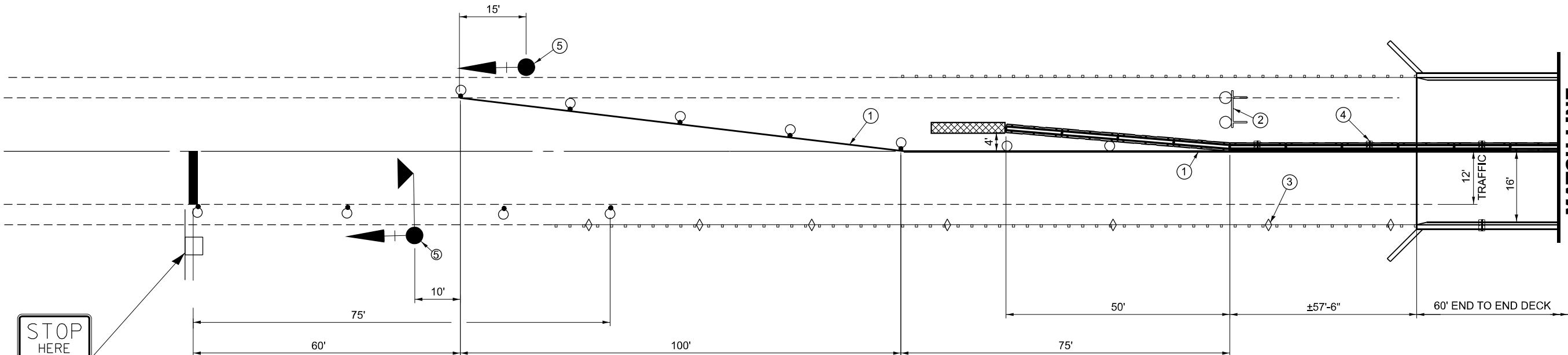


PAVEMENT MARKING

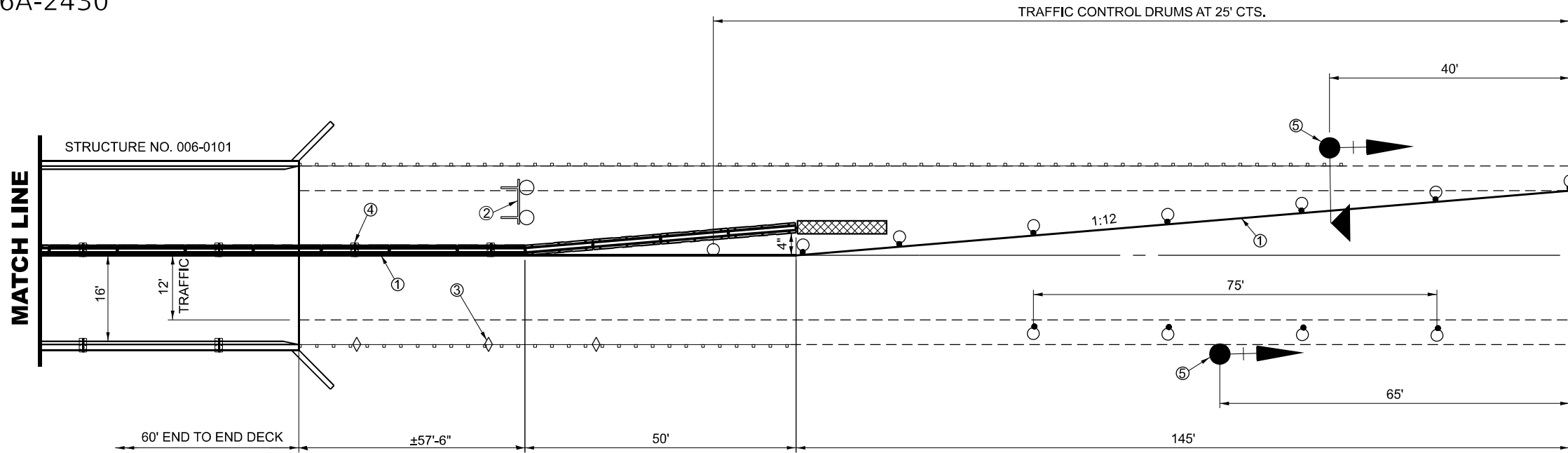
	USER NAME = ronald.woodshank	DESIGNED - RW	REVISED -	STATE OF ILLINOIS DEPARTMENT OF TRANSPORTATION	TYPICAL SECTION				F.A.P. RTE.	SECTION	COUNTY	TOTAL SHEETS	SHEET NO.
		DRAWN - RW	REVISED -						587	(140BR-2)BP	BUREAU	7	4
		CHECKED - JS	REVISED -		CONTRACT NO. 66R91								
	PLOT DATE = 9/3/2025	DATE - 7/9/2025	REVISED -		SCALE:	SHEET 1	OF 1 SHEETS	STA.	TO STA.	ILLINOIS	FED. AID PROJECT		



MATCH LINE



R10-6A-2430



R10-6A-2430

SYMBOLS

- WORK AREA
- SIGN
- TYPE III BARRICADE WITH FLASHING LIGHTS
- IMPACT ATTENUATOR
- DRUM (TANGENT ONLY)
- TRAFFIC SIGNAL WITH BACK PLATE AND MICROWAVE DETECTOR
- DRUM WITH STEADY BURNING BI-DIRECTIONAL LIGHT (TAPER ONLY)
- TEMPORARY CONCRETE BARRIER
- BARRIER WALL REFLECTOR, TYPE "C"
- CRYSTAL, BIDIRECTIONAL GUARDRAIL REFLECTOR
- FLASHING BI-DIRECTIONAL LIGHT
- TRAFFIC SIGNAL WITH BACK PLATE

- ① TEMPORARY PAVEMENT MARKING
- ② TYPE III BARRICADE TO BE PLACED WHEN NO WORK IS BEING PERFORMED.
- ③ GUARDRAIL REFLECTORS, TYPE "A" AT 25' CTS. SEE SHEET 6 OF 7 FOR DETAILS.
- ④ BARRIER WALL REFLECTORS TYPE "C" AT 25' CTS. SEE SHEET 6 OF 7 FOR DETAILS.
- ⑤ THE EDGE OF THE POST MOUNTED SIGNAL HEAD SHALL BE BETWEEN 24" AND 6' FROM EDGE OF SHOULDER.

GENERAL NOTES

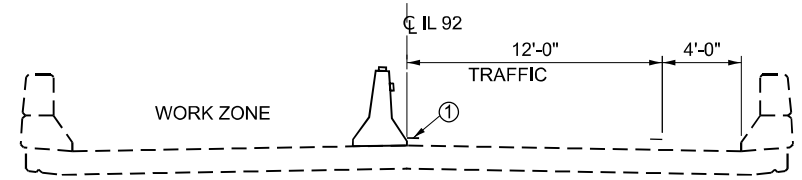
THIS DETAIL IS SHALL BE USED IN CONJUNCTION WITH TRAFFIC CONTROL AND PROTECTION, STANDARD 701321.

TRAFFIC SIGNALS SHALL BE OPERATIONAL ONLY WHEN ALL TRAFFIC CONTROLS ARE IN PLACE. WHEN TRAFFIC SIGNALS ARE NOT IN OPERATION, FLAGGERS SHALL BE USED AND TRAFFIC CONTROL SHALL CONFORM TO STANDARD 701201 OR 701206.

TEMPORARY CONCRETE BARRIER SHALL BE ACCORDING TO STANDARD 704001.

TEMPORARY CONCRETE BARRIER DELINEATION SHALL BE ACCORDING TO THE DETAILS AS PROVIDD IN THE PLANS.

EXISTING OR TEMPORARY PAVEMENT MARKINGS SHALL BE ON BOTH SIDES OF OPEN LANE FROM STOP BAR TO STOP BAR.



CROSS SECTION

LOOKING EAST

STATE OF ILLINOIS
DEPARTMENT OF TRANSPORTATION

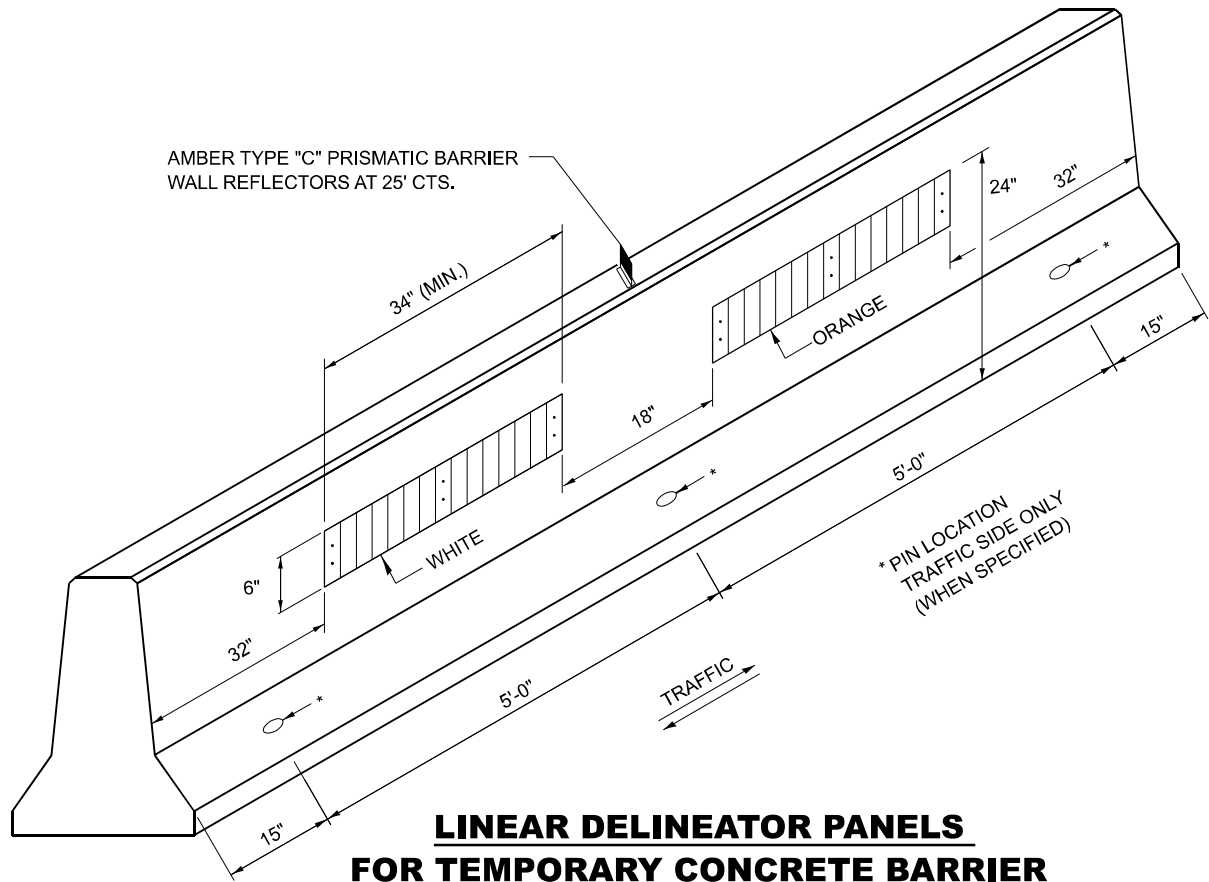
TRAFFIC CONTROL DETAILS

USER NAME: Donald Woodshank	DESIGNED - RW	REVISED -
	DRAWN - RW	REVISED -
	CHECKED - JS	REVISED -
PLOT DATE: 9/3/2025	DATE - 7/8/2025	REVISED -

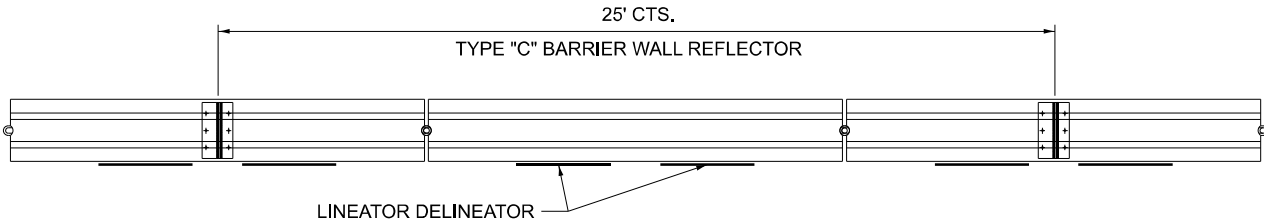
SCALE: SHEET 1 OF 1 SHEETS STA. TO STA.

F.A.P. RTE. 587	SECTION (140BR-2)BP	COUNTY BUREAU	TOTAL SHEETS 7	SHEET NO. 5
CONTRACT NO. 66R91				
ILLINOIS FED. AID PROJECT				

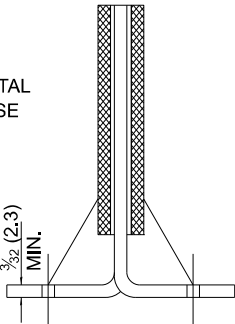
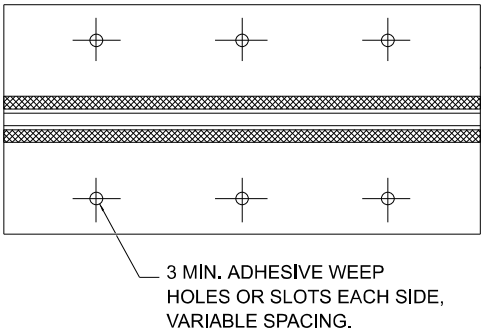
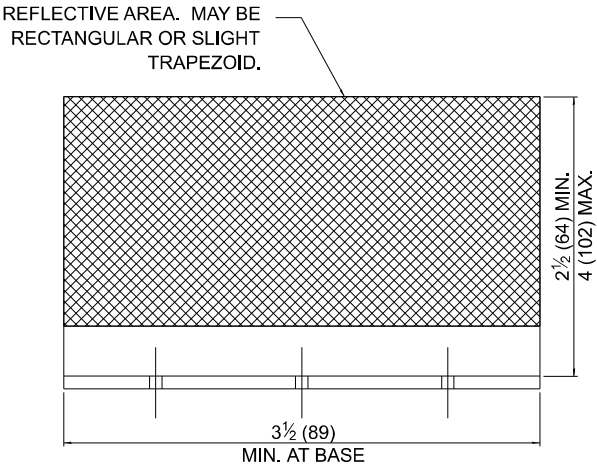
FILE NAME: c:\pwworkspace\woodshank\1139042\66R91.dgn



**LINEAR DELINEATOR PANELS
FOR TEMPORARY CONCRETE BARRIER**

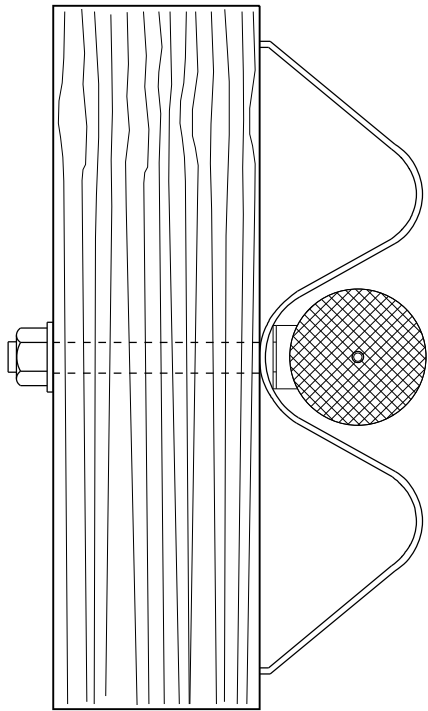


TYPE "C" REFLECTOR FOR TEMPORARY CONCRETE BARRIER

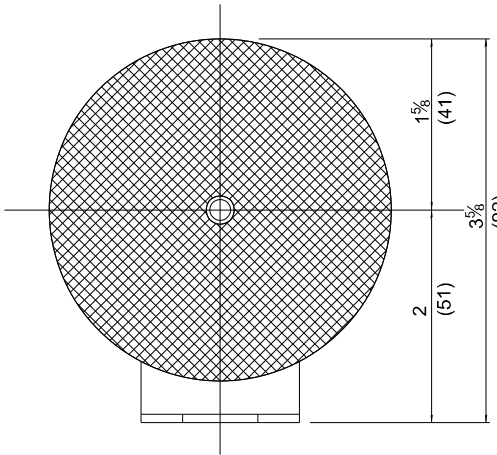
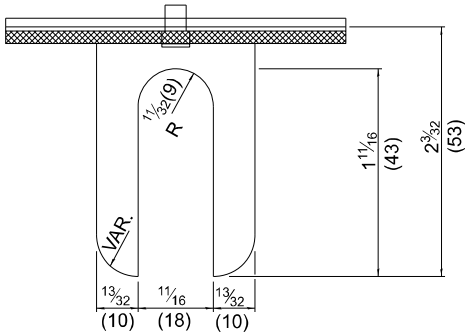


REFLECTOR TYPE C

TEMPORARY CONCRETE BARRAIER WALL

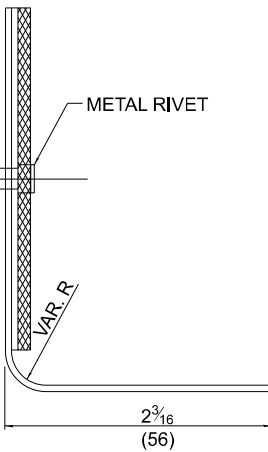


**TYPICAL MOUNTING DETAIL
FOR GUARDRAIL TYPE "A" REFLECTOR**



REFLECTOR TYPE A

(MONODIRECTIONAL SHOWN)
STEEL PLATE BEAM GUARDRAIL



FILE NAME: c:\pwworkspace\woodshank\1139042\66R91.dgn

MODEL: Default

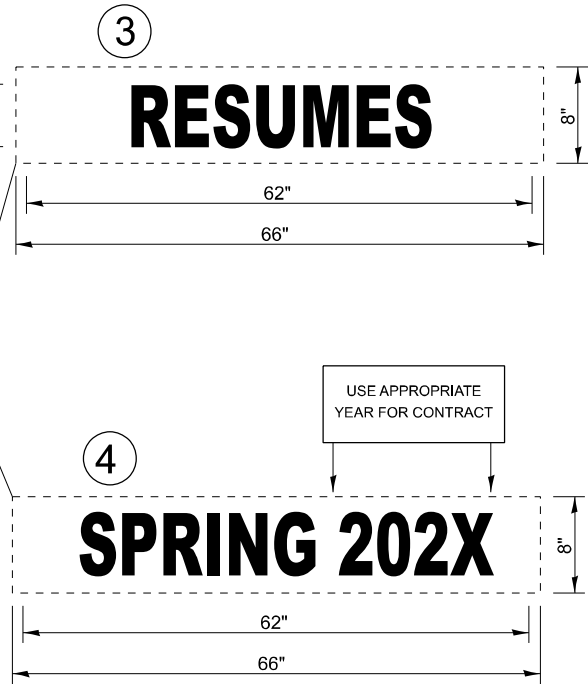
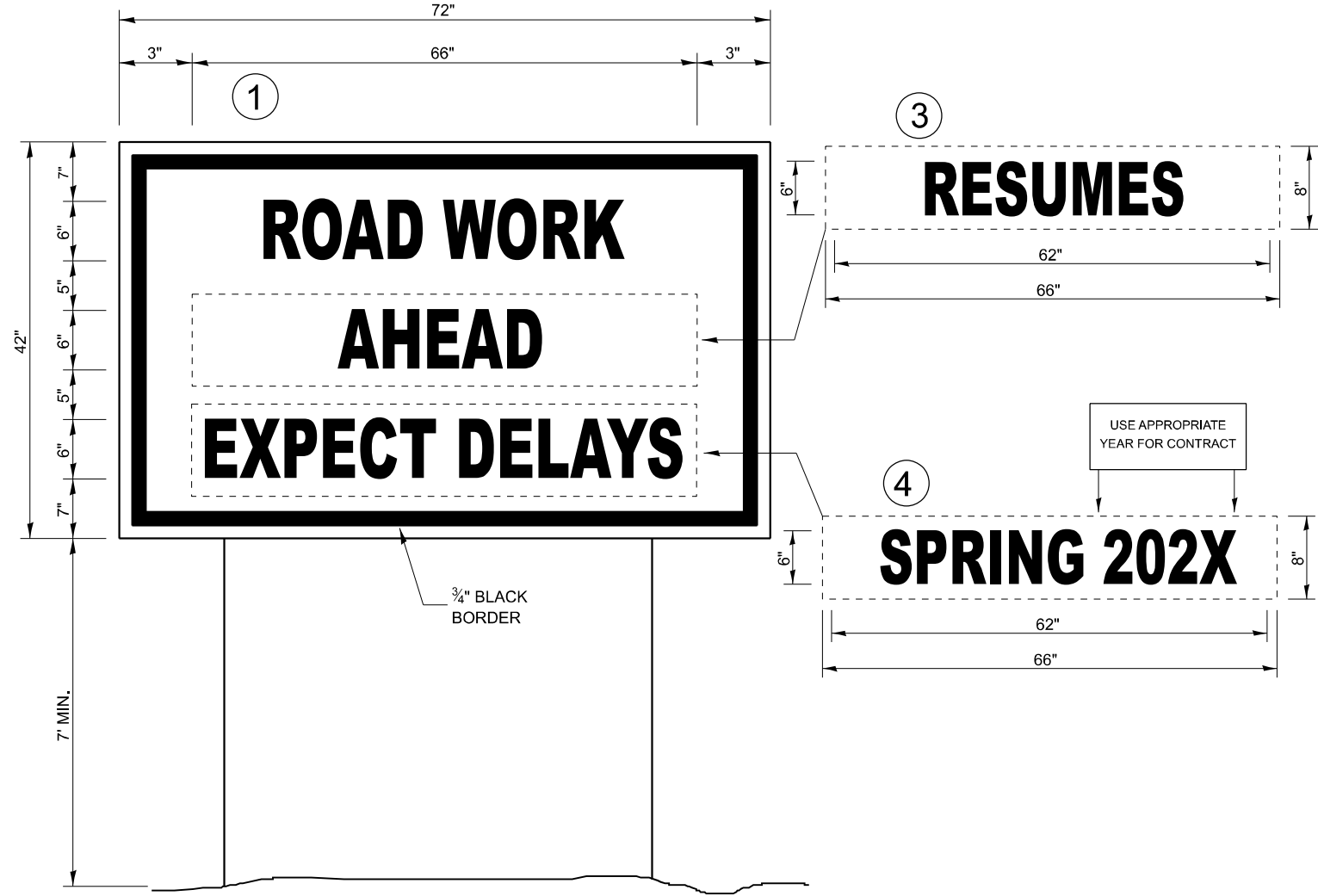
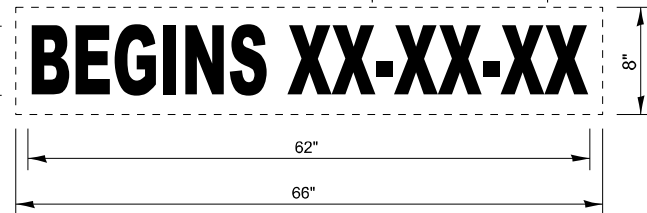
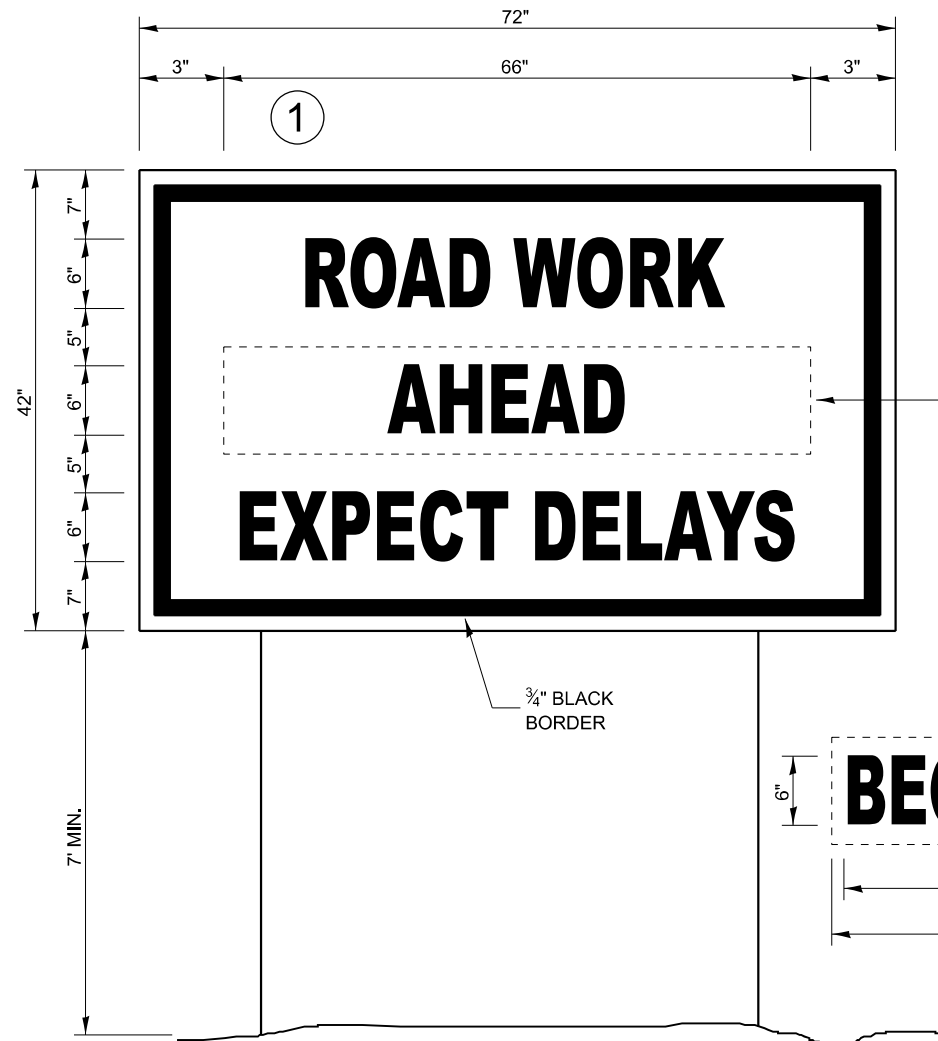
USER NAME: Donald Woodshank	DESIGNED - RW	REVISED -
	DRAWN - RW	REVISED -
	CHECKED - JS	REVISED -
PLOT DATE: 9/3/2025	DATE - 7/8/2025	REVISED -

STATE OF ILLINOIS
DEPARTMENT OF TRANSPORTATION

TEMPORARY CONCRETE BARRIER WALL / GUARDRAIL DELINEATION

SCALE: SHEET 1 OF 1 SHEETS STA. TO STA.

F.A.P. RTE.	SECTION	COUNTY	TOTAL SHEETS	SHEET NO.
587	(140BR-2)BP	BUREAU	7	6
CONTRACT NO. 66R91				
ILLINOIS FED. AID PROJECT				



TEMPORARY INFORMATION SIGNING

WINTER SHUT DOWN SIGNING

NOTES:

- USE 6" D BLACK LETTERING ON FLOURESENT ORANGE BACKGROUND.
- ERECT SIGNS AT LOCATIONS IN ADVANCE OF THE "ROAD CONSTRUCTION AHEAD" SIGNS AS DIRECTED BY THE ENGINEER.
- ERECT SIGN ① WITH INSTALLED PANEL ② A MINIMUM OF ONE WEEK PRIOR TO THE START OF THE LANE CLOSURE.
- REMOVE PANEL ② ON THAT DATE.
- SEE SPECIAL PROVISION "TEMPORARY INFORMATION SIGNING" FOR ADDITIONAL INFORMATION.
- WILL BE PAID FOR PER SQ FT AS "TEMPORARY INFORMATION SIGNING". EACH SIGN = 21 SQ FT. THE DATE PANEL ② RESUMES PANEL ③ AND SPRING 202X PANEL ④ WILL NOT BE MEASURED SEPARATELY FOR PAYMENT.

STATE OF ILLINOIS
DEPARTMENT OF TRANSPORTATION

TEMPORARY INFORMATION SIGNING DETAILS

SCALE: SHEET 1 OF 1 SHEETS STA. TO STA.

F.A.P. RTE.	SECTION	COUNTY	TOTAL SHEETS	SHEET NO.
587	(140BR-2)BP	BUREAU	7	7
CONTRACT NO. 66R91				
ILLINOIS FED. AID PROJECT				