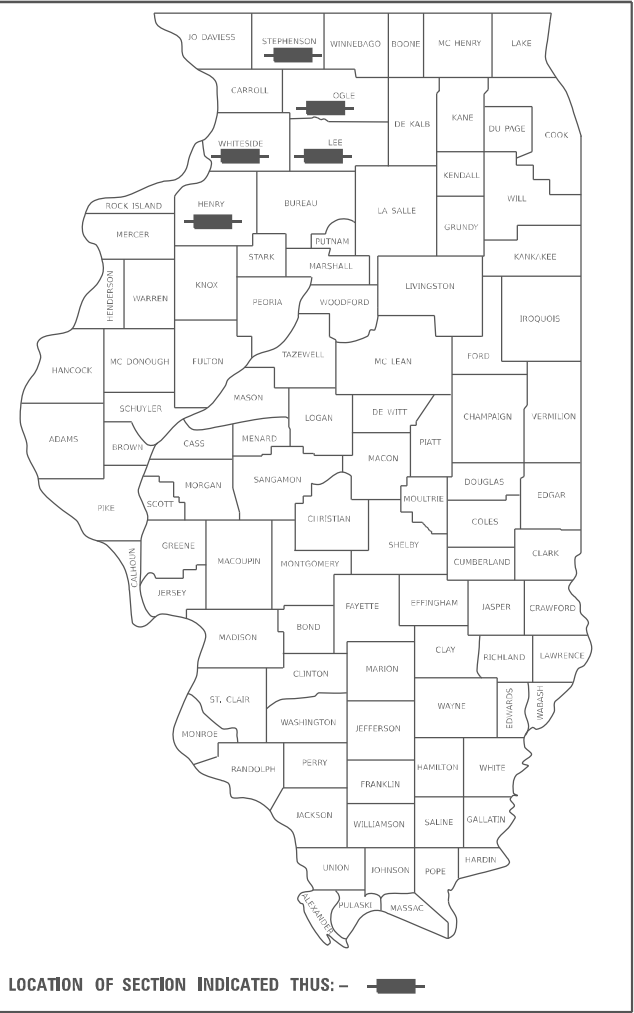


STATE OF ILLINOIS  
DEPARTMENT OF TRANSPORTATION

F.A. RTE.	SECTION	COUNTY	TOTAL SHEETS	SHEET NO.
VAR.	D2 BC 2026-06	VARIOUS	18	1
		ILLINOIS	CONTRACT NO. 64V10	

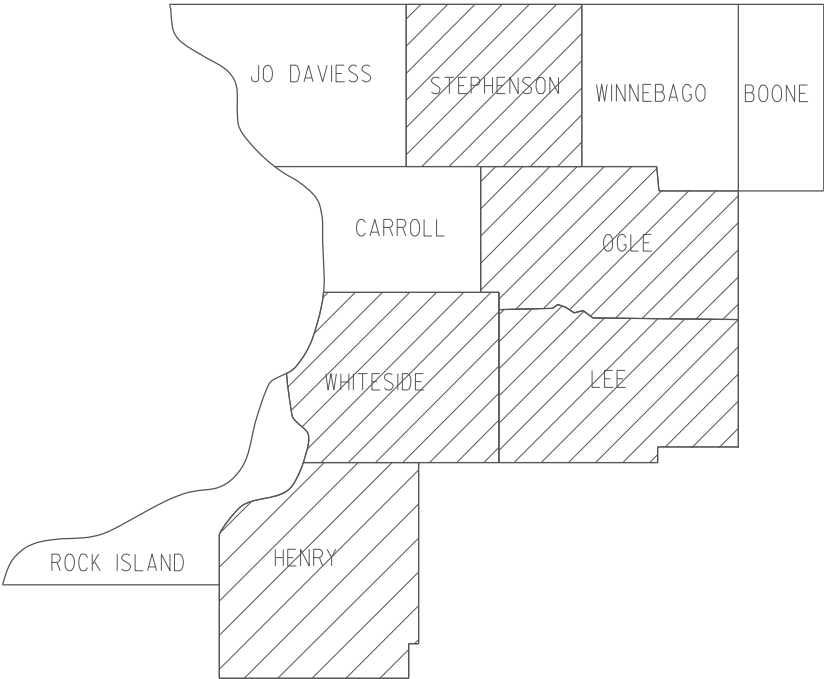
D-92-124-26



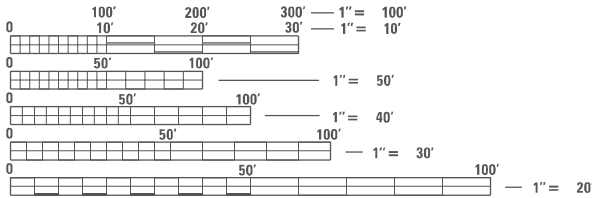
PROPOSED  
HIGHWAY PLANS

VARIOUS ROUTES  
SECTION D2 BC 2026-06  
PROJECT:  
TYPE of IMPROVEMENT: BRIDGE WASHING  
VARIOUS COUNTIES

C-92-016-26



LOCATION OF SECTION INDICATED THUS: - [thick black line]



FULL SIZE PLANS HAVE BEEN PREPARED USING STANDARD  
ENGINEERING SCALES, REDUCED SIZED PLANS WILL NOT  
CONFORM TO STANDARD SCALES. IN MAKING MEASUREMENTS  
ON REDUCED PLANS, THE ABOVE SCALES MAY BE USED.

J.U.L.I.E.  
JOINT UTILITY LOCATION INFORMATION FOR EXCAVATION  
1-800-892-0123  
OR 811

PROJECT ENGINEER: DAVID DOSS (815) 284-5416  
PROJECT MANAGER: DERRICK LOPEZ (815) 284-5398

CONTRACT NO. 64V10

STATE OF ILLINOIS  
DEPARTMENT OF TRANSPORTATION

SUBMITTED October 1 20 25  
Julia Thompson  
REGIONAL ENGINEER  
December 5 20 25  
Scott A. [Signature]  
ENGINEER OF DESIGN AND ENVIRONMENT  
December 5 20 25  
[Signature]  
DIRECTOR OF HIGHWAYS PROJECT IMPLEMENTATION

PRINTED BY THE AUTHORITY  
OF THE STATE OF ILLINOIS

# INDEX OF SHEETS

1	COVER SHEET
2	INDEX OF SHEETS & STATE STANDARDS
3	SUMMARY OF QUANTITIES
4	SCHEDULE OF QUANTITIES
5	LOCATION MAP HENRY COUNTY
6	LOCATION MAP LEE COUNTY
7	LOCATION MAP OGLE COUNTY
8	LOCATION MAP STEPHENSON COUNTY
9	LOCATION MAP WHITESIDE COUNTY
10-13	WORK ZONE SIGN DETAILS (DIST STD 34.1)
14	URBAN LANE INSIDE CLOSURE, MULTILANE, 2-WAY, WITH MOUNTABLE MEDIAN (DIST STD 35.1)
15-18	TRAFFIC CONTROL FOR TRANSITION AREAS (DIST STD 38.1)

# STATE STANDARDS

701006-05	OFF-ROAD OPERATIONS, 2L, 2W, 15'(4.5m) TO 24" (600mm) FROM PAVEMENT EDGE
701101-05	OFF-ROAD OPERATIONS, MULTILANE, 15'(4.5m) TO 24"(600mm) FROM PAVEMENT EDGE
701201-05	LANE CLOSURE, 2L, 2W, DAY ONLY, FOR SPEEDS, ≥ 45 MPH
701301-04	LANE CLOSURE, 2L, 2W, SHORT TIME OPERATIONS
701400-12	APPROACH TO LANE CLOSURE, FREEWAY/EXPRESSWAY
701406-13	LANE CLOSURE, FREEWAY/EXPRESSWAY, DAY OPERATIONS ONLY
701606-10	URBAN SINGLE LANE CLOSURE, MULTILANE, 2W WITH MOUNTABLE MEDIAN
701901-11	TRAFFIC CONTROL DEVICES
720011-01	METAL POSTS FOR SIGNS, MARKERS AND DELINEATORS
728001-01	TELESCOPING STEEL SIGN SUPPORT
729001-01	APPLICATIONS OF TYPES A & B METAL POSTS (FOR SIGNS & MARKERS)

	USER NAME = David.Doss	DESIGNED -	REVISED -	STATE OF ILLINOIS DEPARTMENT OF TRANSPORTATION	INDEX OF SHEETS & STATE STANDARDS		F.A. RTE.	SECTION	COUNTY	TOTAL SHEETS	SHEET NO.
		DRAWN -	REVISED -				VAR.	D2 BC 2026-06	VARIOUS	18	2
	PLOT SCALE = \$SCALE\$	CHECKED -	REVISED -				CONTRACT NO. 64V10				
	PLOT DATE = 9/30/2025	DATE -	REVISED -		SCALE:	SHEET OF SHEETS	STA.	TO STA.	ILLINOIS FED. AID PROJECT		

# SUMMARY OF QUANTITIES

Paycode	Description	Units	0047 100% STATE	Total
59200101	BRIDGE WASHING NO. 1	EACH	1	1
59200102	BRIDGE WASHING NO. 2	EACH	1	1
59200103	BRIDGE WASHING NO. 3	EACH	1	1
59200104	BRIDGE WASHING NO. 4	EACH	1	1
59200105	BRIDGE WASHING NO. 5	EACH	1	1
59200106	BRIDGE WASHING NO. 6	EACH	1	1
59200107	BRIDGE WASHING NO. 7	EACH	1	1
59200108	BRIDGE WASHING NO. 8	EACH	1	1
67100100	MOBILIZATION	L SUM	1	1
70100450	TRAFFIC CONTROL AND PROTECTION, STANDARD 701201	L SUM	1	1
70102625	TRAFFIC CONTROL AND PROTECTION, STANDARD 701606	L SUM	1	1
70100700	TRAFFIC CONTROL AND PROTECTION, STANDARD 701406	L SUM	1	1

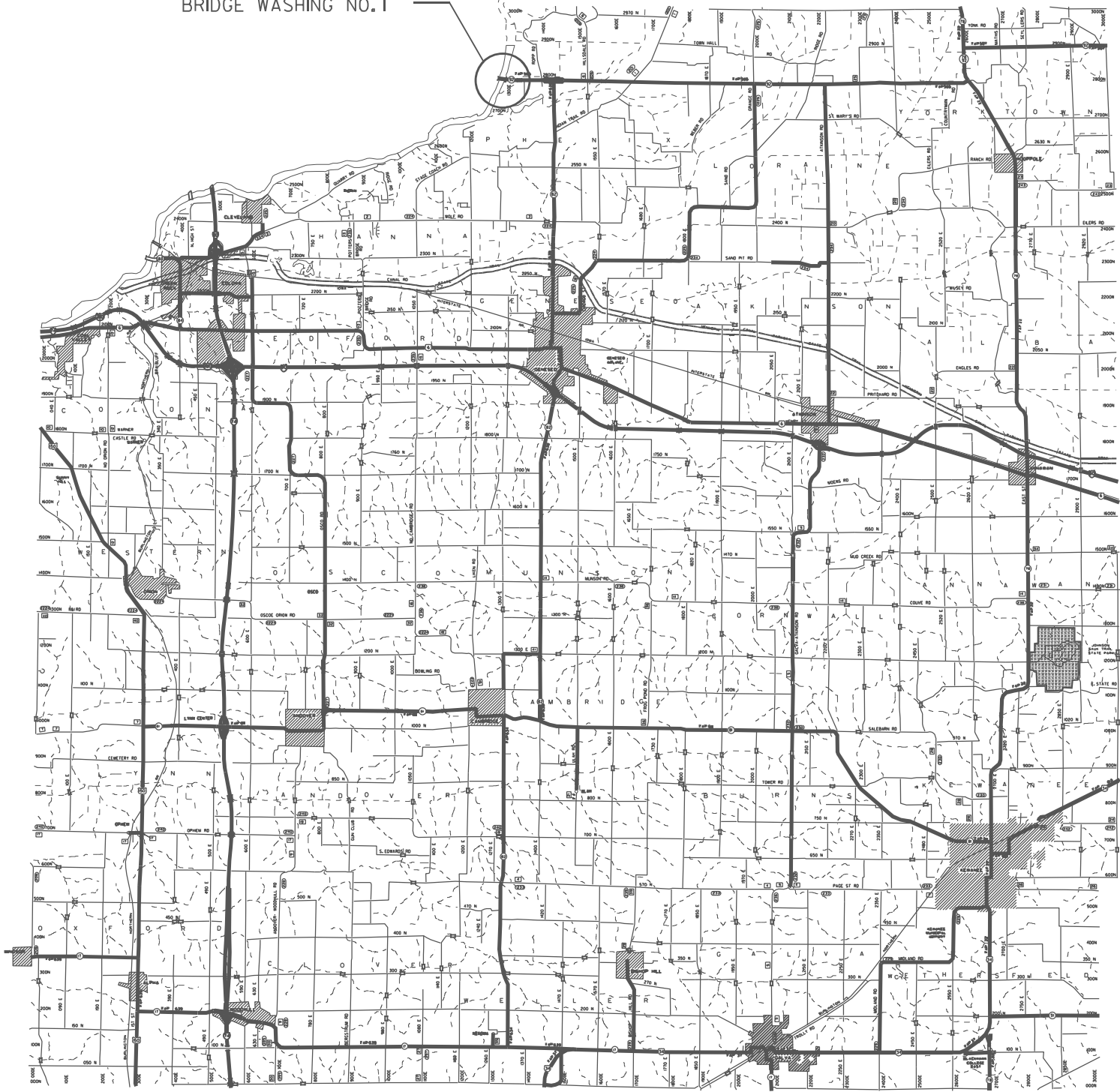
# SCHEDULE OF QUANTITIES

Pay Item	Project Location	SN	Facility Carried	Feature Crossed	Bridge Location	Tra c Control
BRIDGE WASHING NO. 1	1	037-0149	IL 92	Rock River	1.0 MI East of Joslin	701201
BRIDGE WASHING NO. 2	2	052-0063	IL 2	Rock River	South edge of Grand Detour	701201
BRIDGE WASHING NO. 3	3	071-0066	IL 251	IL 38, C&NW RR, BN RR	In Rochelle	701606 DIST STD 35.1
BRIDGE WASHING NO. 4	4	071-0088	IL 64	Rock River	East of IL 2 in Oregon	701606 DIST STD 35.1 DIST STD 38.1
BRIDGE WASHING NO. 5	5	089-0042	US ROUTE 20	Pecatonica River	NE of Freeport	701400 701406
BRIDGE WASHING NO. 6		089-0081	US ROUTE 20 WB	Pecatonica River	NE of Freeport	701400 701406
BRIDGE WASHING NO. 7	6	098-0034	US RT 30	Rock River	1 Mi East of JCT IL 2, 1.5 Mi West of Rock Falls	701201
BRIDGE WASHING NO. 8	7	098-0115	IL 40	Rock River	Between Sterling and Rock Falls	701606 DIST STD 35.1

# HENRY COUNTY



LOCATION 1  
SN 037-0149  
BRIDGE WASHING NO.1



STATE OF ILLINOIS  
DEPARTMENT OF TRANSPORTATION

HENRY COUNTY  
LOCATION MAP

SCALE: SHEET OF SHEETS STA. TO STA.

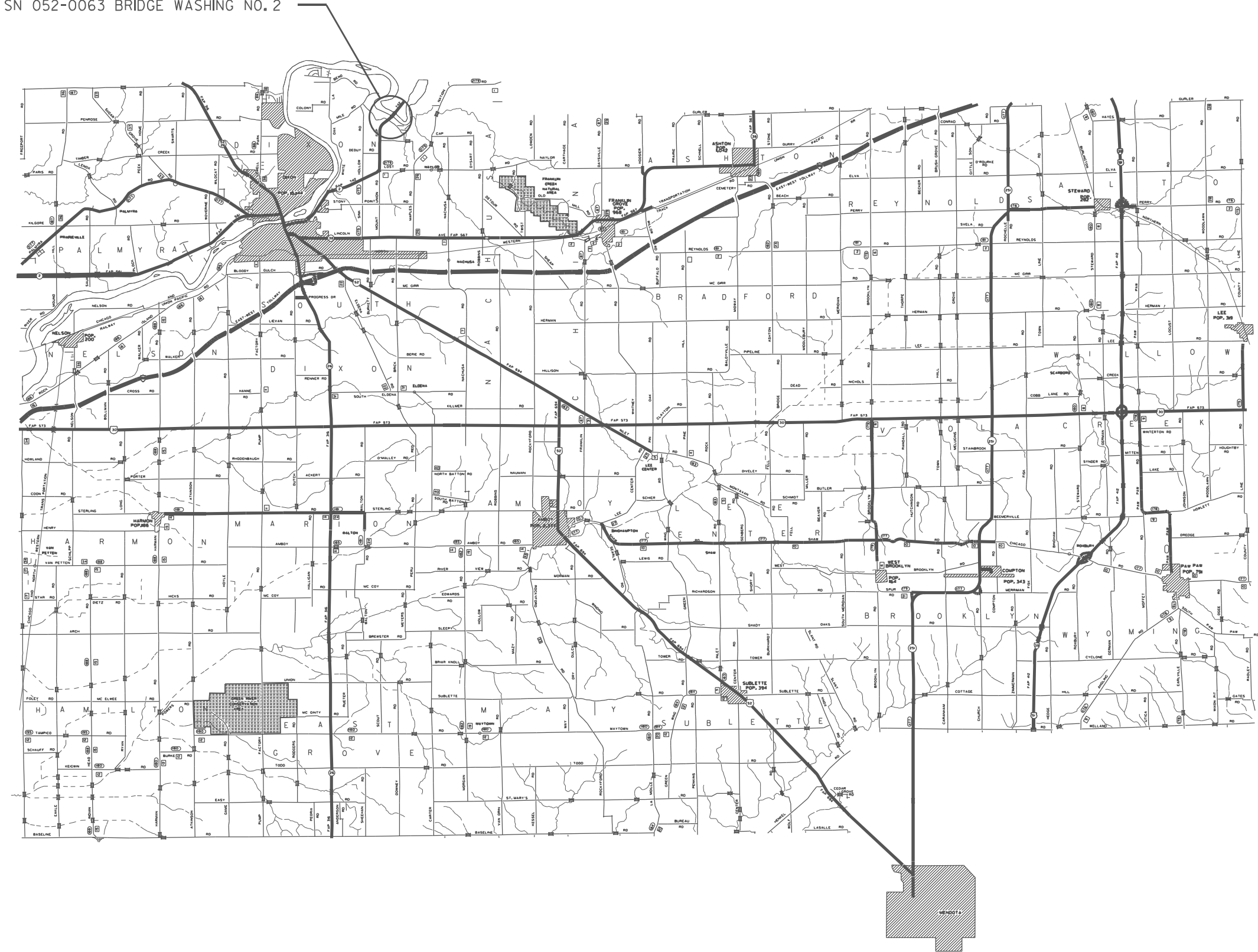
F.A. RTE.	SECTION	COUNTY	TOTAL SHEETS	SHEET NO.
VAR.	D2 BC 2026-06	VARIOUS	18	5
CONTRACT NO. 64V10				
ILLINOIS		FED. AID PROJECT		

MODEL: Default  
FILE: \\dot-aw.bentley.com:plm\dot Documents\DOT 0 cas\District 2\ORD Projects\Operations\Bridge Section\Bridge Washing at various locations (B)\CADD\64V10-shf-cover.dgn

LEE COUNTY



LOCATION 2  
SN 052-0063 BRIDGE WASHING NO.2



MODEL: Default  
FILE: \\dot-cw.bentley.com\\P\\V\\DOT\\Documents\\DOT 0 ces\\District 2\\ORD Projects\\Operations\\Bridge Section\\Bridge Washing at various locations (B)\\CADD\\64V10-shit-cover.dgn

USER NAME = David.Doss	DESIGNED -	REVISED -
	DRAWN -	REVISED -
PLOT SCALE = 5\$CALES	CHECKED -	REVISED -
PLOT DATE = 9/30/2025	DATE -	REVISED -

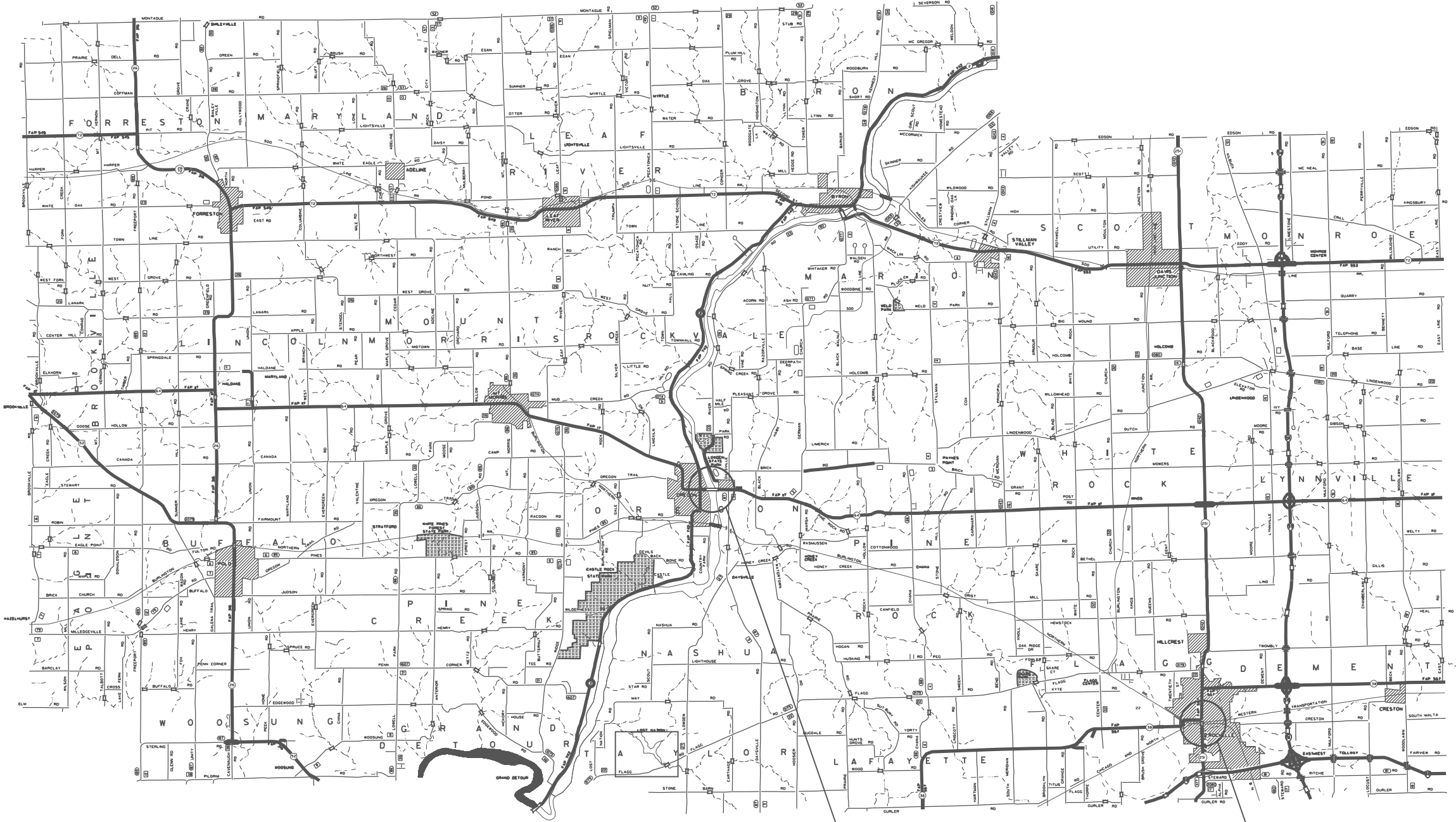
STATE OF ILLINOIS  
DEPARTMENT OF TRANSPORTATION

LEE COUNTY  
LOCATION MAP

SCALE: SHEET OF SHEETS STA. TO STA.

F.A. RTE.	SECTION	COUNTY	TOTAL SHEETS	SHEET NO.
VAR.	D2 BC 2026-06	VARIOUS	18	6
CONTRACT NO. 64V10				
ILLINOIS FED. AID PROJECT				

# OGLE COUNTY



LOCATION 4  
SN 071-0088  
BRIDGE WASHING NO. 4

LOCATION 3  
SN 071-0066  
BRIDGE WASHING NO. 3

STATE OF ILLINOIS  
DEPARTMENT OF TRANSPORTATION

OGLE COUNTY  
LOCATION MAP

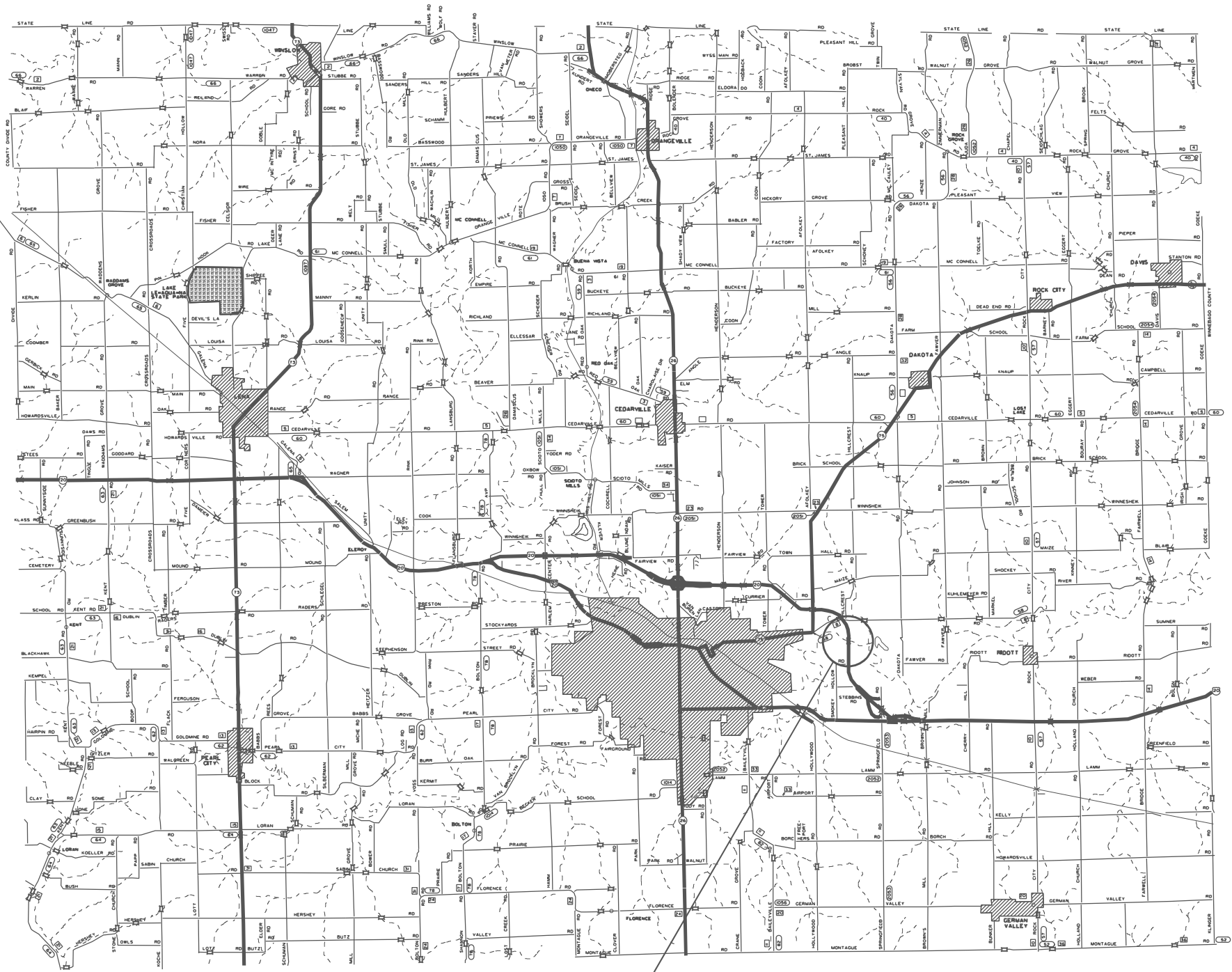
SCALE: SHEET OF SHEETS STA. TO STA.

F.A. RTE.	SECTION	COUNTY	TOTAL SHEETS	SHEET NO.
VAR.	D2 BC 2026-06	VARIOUS	18	7
CONTRACT NO. 64V10				
ILLINOIS FED. AID PROJECT				

MODEL: Default  
FILE: \\dot-aw-bentley.com:plm\dotdocuments\DOT 0 ces\District 2\ORD Projects\Operations\Bridges Section\Bridges Washing at various locations (B)\CADD\64V10-shit-cover.dgn

USER NAME = David.Doss	DESIGNED -	REVISED -
	DRAWN -	REVISED -
PLOT SCALE = \$SCALE\$	CHECKED -	REVISED -
PLOT DATE = 9/30/2025	DATE -	REVISED -

# STEPHENSON COUNTY



LOCATION 5  
SN 089-0081 BRIDGE WASHING NO. 6  
SN 089-0042 BRIDGE WASHING NO. 5

MODEL: Default  
FILE: \\dot-aw-bentley.com\plm\dot-aw\Documents\DOT 0 ces\District 2\ORD Projects\Operations\Bridges Section\Bridges Washing at various locations (B)\CADD64V10-shit-cover.dgn

USER NAME = David.Doss	DESIGNED -	REVISED -
	DRAWN -	REVISED -
PLOT SCALE = 5\$CALES	CHECKED -	REVISED -
PLOT DATE = 9/30/2025	DATE -	REVISED -

STATE OF ILLINOIS  
DEPARTMENT OF TRANSPORTATION

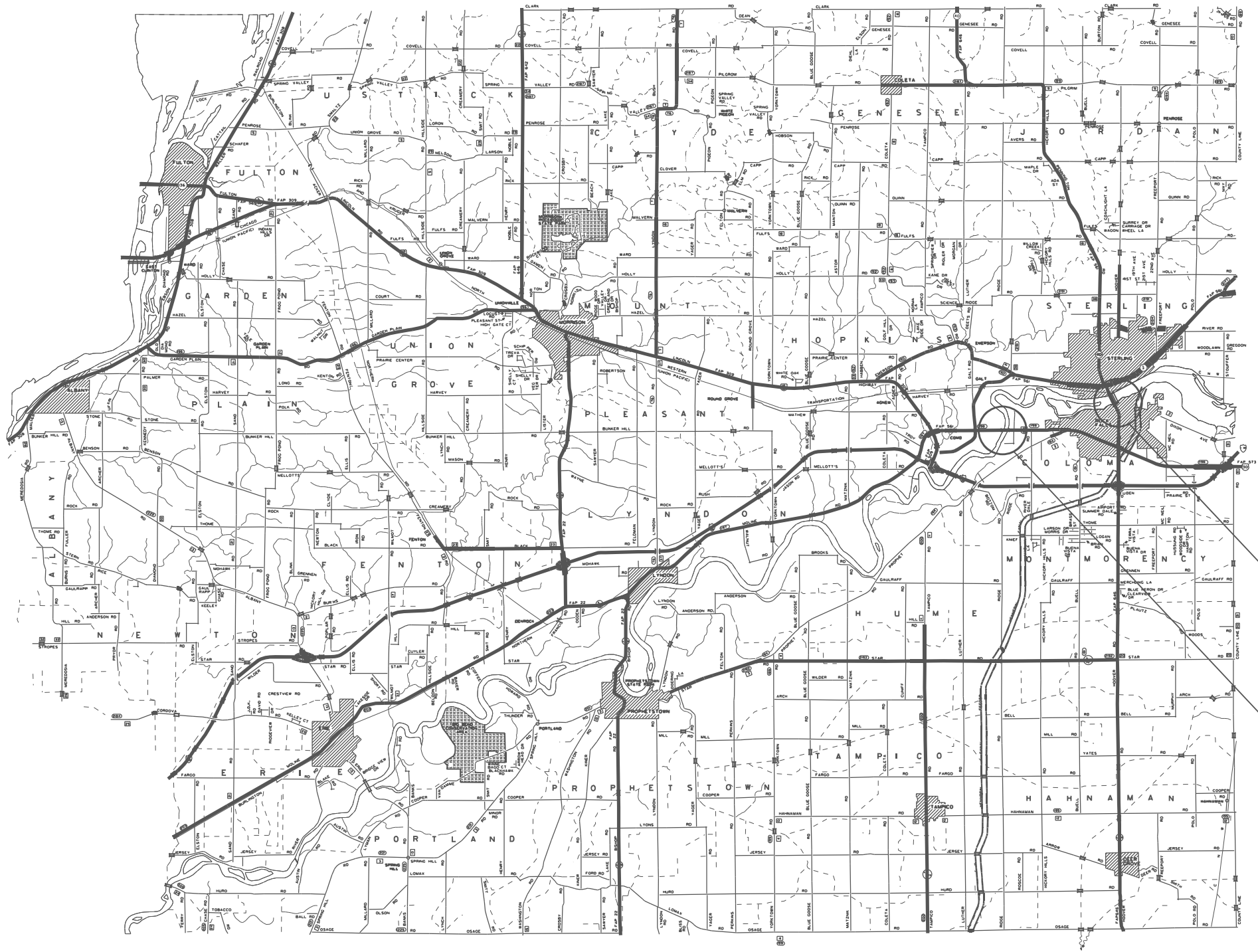
STEPHENSON COUNTY  
LOCATION MAP

SCALE: SHEET OF SHEETS STA. TO STA.

F.A. RTE.	SECTION	COUNTY	TOTAL SHEETS	SHEET NO.
VAR.	D2 BC 2026-06	VARIOUS	18	8
CONTRACT NO. 64V10				
ILLINOIS FED. AID PROJECT				



WHITESIDE COUNTY



LOCATION 7  
SN 098-0115  
BRIDGE WASHING NO. 8

LOCATION 6  
SN 098-0034  
BRIDGE WASHING NO. 7

STATE OF ILLINOIS  
DEPARTMENT OF TRANSPORTATION

WHITESIDE COUNTY  
LOCATION MAP

SCALE: SHEET OF SHEETS STA. TO STA.

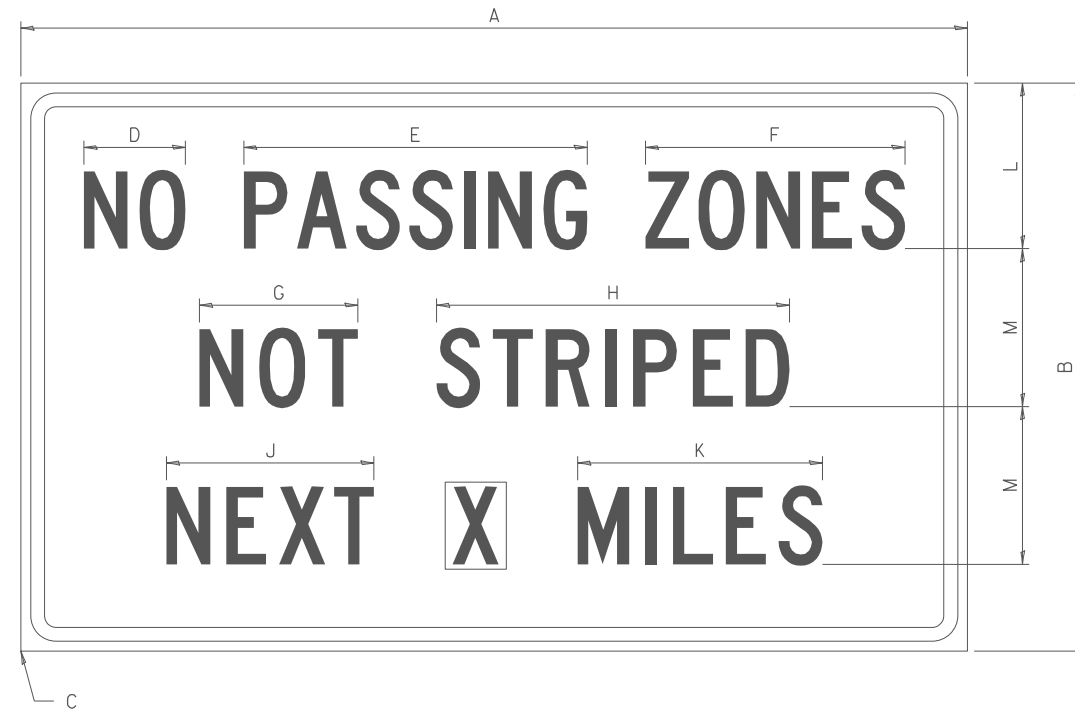
F.A. RTE.	SECTION	COUNTY	TOTAL SHEETS	SHEET NO.
VAR.	D2 BC 2026-06	VARIOUS	18	9
CONTRACT NO. 64V10				
ILLINOIS FED. AID PROJECT				

MODEL: Default  
FILE: \\dot-aw.bentley.com:PIV\DOT\Documents\DOT 0 ces\District 2\ORD Projects\Operations\Bridge Section\Bridge Washing Contracts\2026\January Letting\64V10 Bridge Washing at various locations (B)\CADD\64V10-shf-cover.dgn

USER NAME = David.Doss	DESIGNED -	REVISED -
	DRAWN -	REVISED -
PLOT SCALE = \$SCALE\$	CHECKED -	REVISED -
PLOT DATE = 9/30/2025	DATE -	REVISED -

## WORK ZONE SIGN DETAILS

# ILLINOIS STANDARD G20-I100



COLOR	LEGEND AND BORDER BACKGROUND	BLACK ORANGE	NON-REFLECTORIZED REFLECTORIZED
-------	---------------------------------	-----------------	------------------------------------

SIGN SIZE	DIMENSIONS											
	A	B	C	D	E	F	G	H	J	K	L	M
60 × 36	60.00	36.00	2.25	6.4	21.80	16.40	10.00	22.40	13.20	15.50	10.50	10.00

SIGN SIZE	SERIES BY LINE			MARGIN	BORDER
	1	2	3		
60 x 36	5C	5C	5C	0.625	0.875

Sign not to scale

## GENERAL NOTES

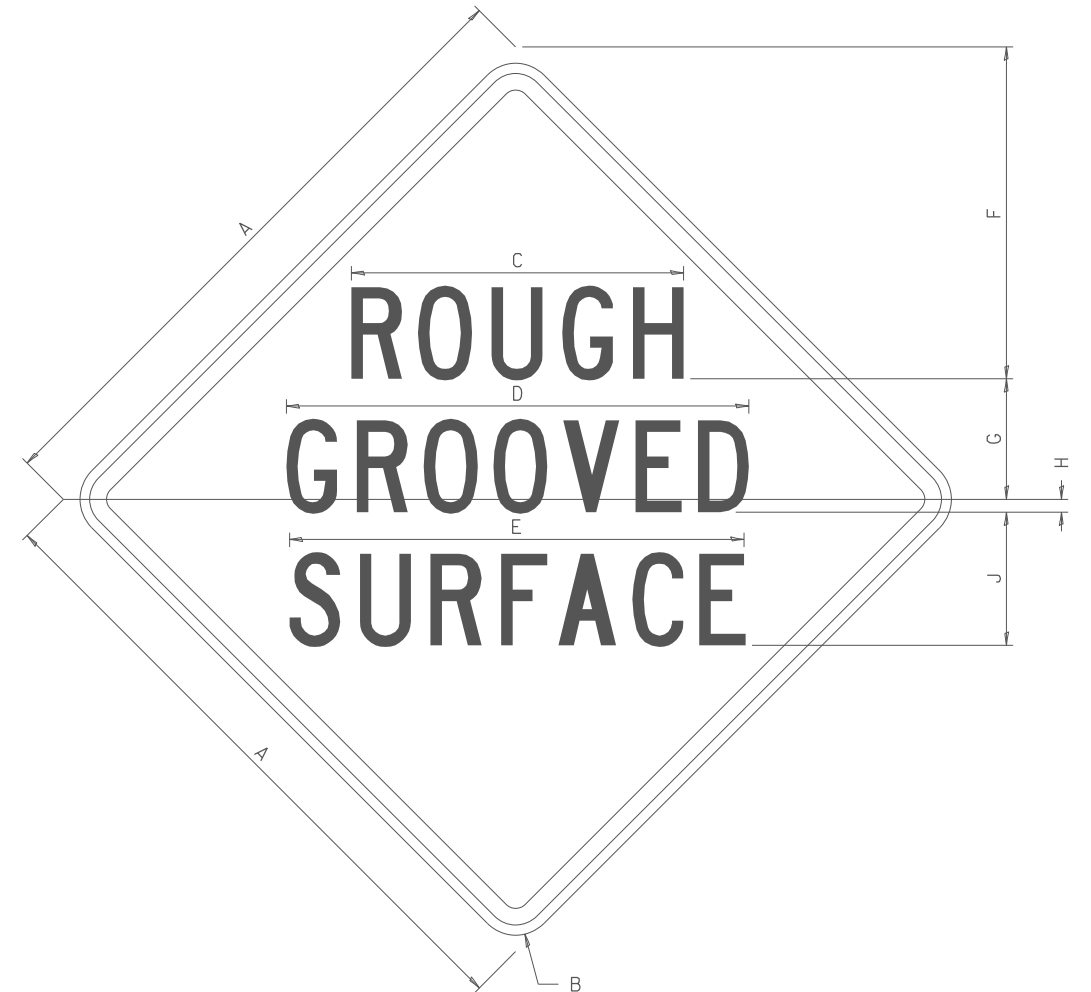
All work to furnish and install these signs shall be included in the cost of the specified traffic control standards and shall not be paid separately.

All Illinois Standard signs shall conform to the latest edition of the "Illinois Standard Highway Signs Book" in effect on the date of invitation for bids.

Signs shall meet the applicable portions of Sections 701 and 720 of the Standard Specifications.

All dimensions are in inches unless otherwise noted.

**ILLINOIS STANDARD W8-I107**



COLOR	LEGEND AND BORDER BACKGROUND	BLACK ORANGE	NON-REFLECTORIZED REFLECTORIZED
-------	---------------------------------	-----------------	------------------------------------

SIGN SIZE	DIMENSIONS								
	A	B	C	D	E	F	G	H	J
48 x 48	48.00	3.00	25.00	34.80	34.20	24.94	9.00	1.00	10.00

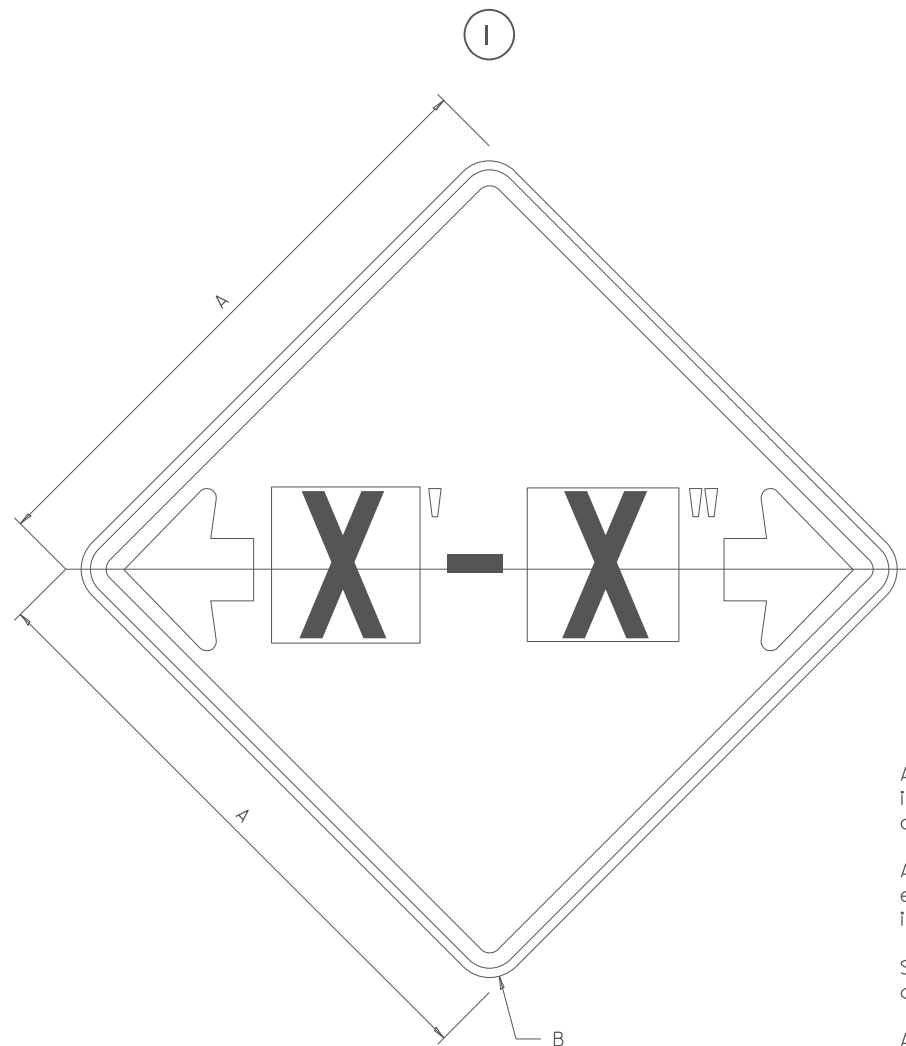
SIGN SIZE	SERIES BY LINE			MARGIN	BORDER
	1	2	3		
48 x 48	7C	7C	7C	1.250	0.750

Sign not to scale

FILE NAME =	USER NAME = David.Doss	DESIGNED -	REVISED - 3-02-16	<div style="text-align: center;"> <b>STATE OF ILLINOIS</b>  <b>DEPARTMENT OF TRANSPORTATION</b> </div>	<div style="text-align: center;"> <b>REGION 2 / DISTRICT 2 STANDARD</b> </div>	F.A. RTE.	SECTION	COUNTY	TOTAL SHEETS	SHEET NO.
pw://ildot.pw.bentley.com/PWIDOT/Documents/IDOT Offices/District 2/ORD Projects/Operations/ORD Projects/Section/Bridge Washing Contract/64V10 Bridge Washing at various locations (64V10) 64V10 Bridge Washing	DRAMA	REVISOR	64V10 Bridge Washing at various locations (64V10) 64V10 Bridge Washing			VAR.	D2 BC 2026-06	VARIOUS	18	10
PLOT SCALE = \$SCALE\$	CHECKED -	REVISED -				CONTRACT NO. 64V10				
PLOT DATE = 9/30/2025	DATE -	REVISED -								
				SCALE:	SHEET NO. OF	SHEETS	STA. TO STA.	FED. ROAD DIST. NO. ILLINOIS FED. AID PROJECT		

## WORK ZONE SIGN DETAILS

# ILLINOIS STANDARD W12-I102



## GENERAL NOTES

All work to furnish and install these signs shall be included in the cost of the specified traffic control standards and shall not be paid separately.

All Illinois Standard signs shall conform to the latest edition of the "Illinois Standard Highway Signs Book" in effect on the date of invitation for bids.

Signs shall meet the applicable portions of Sections 701 and 720 of the Standard Specifications.

All dimensions are in inches unless otherwise noted.

COLOR	LEGEND AND BORDER BACKGROUND	BLACK FL ORANGE	NON-REFLECTORIZED REFLECTORIZED
SIGN SIZE	DIMENSIONS		
	A	B	
48 x 48	48.00	3.00	

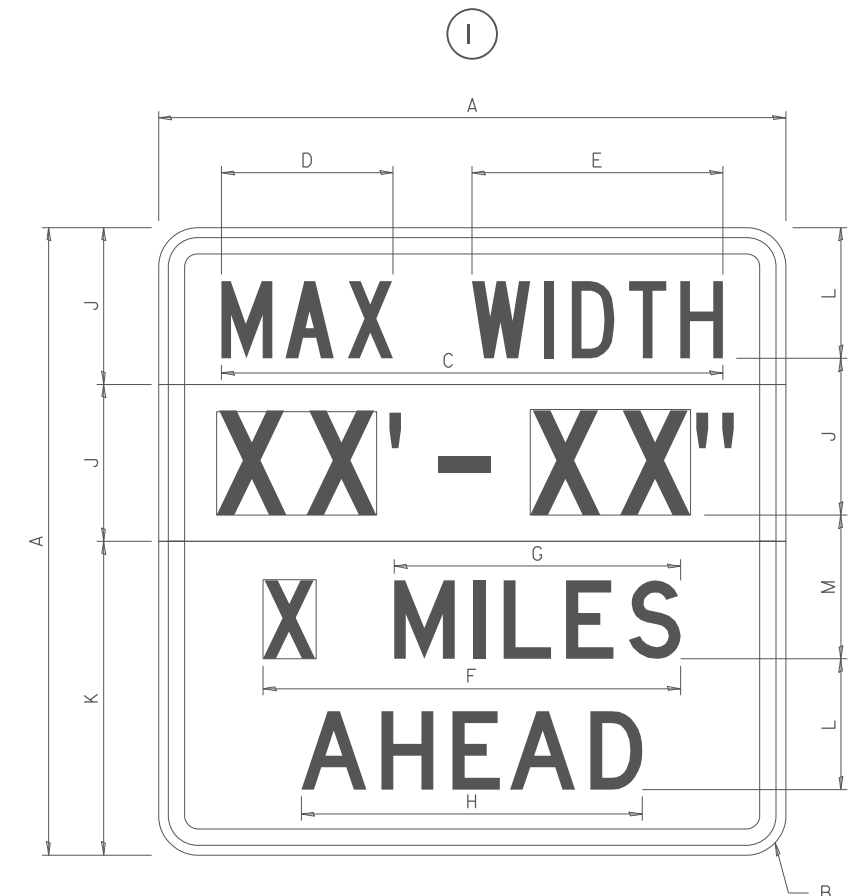
① Illinois Standard used as described

① Illinois Standard signs W12-1102 and W12-1103 shall be used as described in the special provisions.

SIGN SIZE	SERIES BY LINE	MARGIN	BORDER
	I		
48 x 48	I2C	0.750	1.250

Sign not to scale

**ILLINOIS STANDARD W12-I103**



COLOR	LEGEND AND BORDER	BLACK	NON-REFLECTORIZED
	BACKGROUND	WHITE	REFLECTORIZED
	BACKGROUND (WIDTH)	FL ORANGE	REFLECTORIZED

SIGN SIZE	DIMENSIONS											
	A	B	C	D	E	F	G	H	J	K	L	M
48 x 48	48.00	3.00	38.40	13.20	19.20	32.00	22.00	26.20	12.00	24.00	10.00	11.00

SIGN SIZE	SERIES BY LINE				MARGIN	BORDER
	1	2	3	4		
48 x 48	6C	8D	6D	6D	0.750	1.250

Sign not to scale

XX'-XX" WIDTH AND X MILES ARE VARIABLE  
TOP AND BOTTOM OF BACKGROUND WHITE

FILE NAME =	USER NAME = David.Doss	DESIGNED -	REVISED - 3-02-16	STATE OF ILLINOIS DEPARTMENT OF TRANSPORTATION	REGION 2 / DISTRICT 2 STANDARD	F.A. RTE.	SECTION	COUNTY	TOTAL SHEETS	SHEET NO.
pw://ildot.pw.bentley.com/PWIDOT/Documents/LDOT Offices/District 2/ORD Projects/Open Drainage Section/Bridge Washing Contr	DRAWN	REVISIONS	64V10 Bridge Washing at various locations (8 Tons) (100' long)			VAR.	D2 BC 2026-06	VARIOUS	I8	II
PLOT SCALE = \$SCALE\$	CHECKED -	REVISED -				CONTRACT NO. 64V10				
PLOT DATE = 9/30/2025	DATE -	REVISED -				SCALE:	SHEET NO. OF SHEETS	STA. TO STA.	FED. ROAD DIST. NO.	ILLINOIS FED. AID PROJECT

WORK ZONE SIGN DETAILS

ROAD CLOSED TO OVERSIZED LOADS

STOP LINE SIGN FOR TEMPORARY SIGNALS



COLOR	LEGEND AND BORDER BACKGROUND	BLACK ORANGE	NON-REFLECTORIZED REFLECTORIZED
-------	---------------------------------	-----------------	------------------------------------

Permit Loads - Loads Over 13 Feet; 3.0" Radius, 1.3" Border;  
[NO OVERSIZE -] D; [OVERWEIGHT LOADS] D 85% spacing; [XX MILES AHEAD] D;  
Table of letter and object lefts.

N	O	O	V	E	R	S	I	Z	E	-
11.7	18.1	30.0	36.2	42.8	48.4	54.4	60.7	63.5	69.5	80.8

O	V	E	R	W	E	I	G	H	T	L	O	A	D	S
2.6	8.6	15.0	20.4	26.2	33.4	38.8	41.3	47.4	53.2	64.5	69.9	75.9	82.9	88.7

X	X	M	I	L	E	S	A	H	E	A	D
7.6	13.6	25.3	32.3	35.1	40.6	46.2	57.9	65.1	71.4	76.6	83.7

Sign not to scale

COLOR	LEGEND AND BORDER BACKGROUND	BLACK WHITE	NON-REFLECTORIZED REFLECTORIZED
-------	---------------------------------	----------------	------------------------------------

SIGN SIZE	SERIES BY LINE		
	1	2	3
24 x 24	4C	4C	4C

Sign not to scale

GENERAL NOTES

All work to furnish and install these signs shall be included in the cost of the specified traffic control standards and shall not be paid separately.

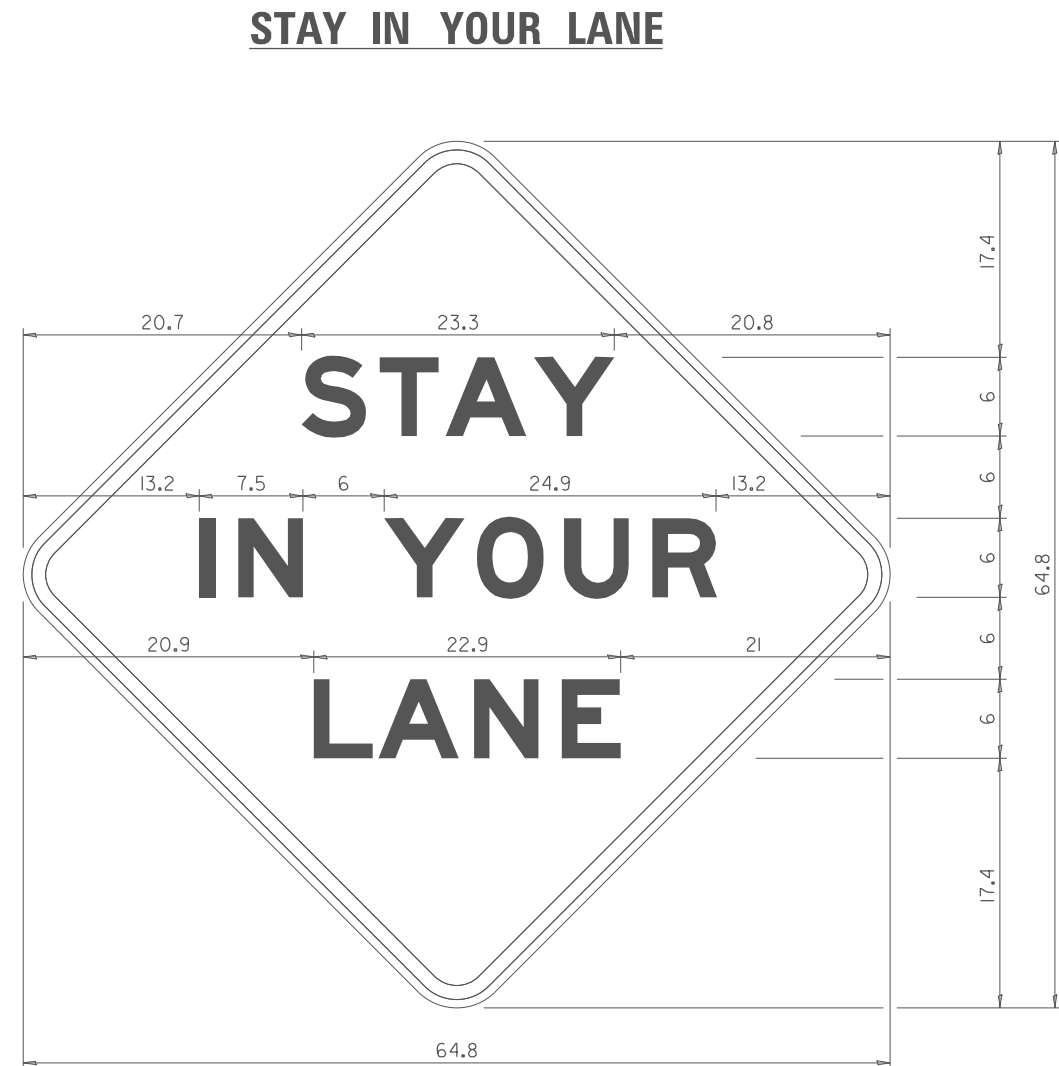
All Illinois Standard signs shall conform to the latest edition of the "Illinois Standard Highway Signs Book" in effect on the date of invitation for bids.

Signs shall meet the applicable portions of Sections 701 and 720 of the Standard Specifications.

All dimensions are in inches unless otherwise noted.

FILE NAME :  p:\1\dot-p\w.bentley.com\PI\DOT\Documents\	USER NAME = David.Doss	DESIGNED -	REVISED - 3-02-16	STATE OF ILLINOIS DEPARTMENT OF TRANSPORTATION	REGION 2 / DISTRICT 2 STANDARD			F.A. RTE.	SECTION	COUNTY	TOTAL SHEETS	SHEET NO.
	DOT Offices/District 2/ORD Projects/Operations/	Bridge Section/Bridge Washing Contract	REVISOR					VAR.	D2 BC 2026-06	VARIOUS	18	12
	PLOT SCALE = \$SCALE\$	CHECKED -	REVISED -		SCALE:			SHEET NO. OF SHEETS			STA. TO STA.	
	PLOT DATE = 9/30/2025	DATE -	REVISED -		FED. ROAD DIST. NO.			ILLINOIS	FED. AID PROJECT	CONTRACT NO. 64V10		

## WORK ZONE SIGN DETAILS



COLOR	LEGEND AND BORDER BACKGROUND	BLACK ORANGE	NON-REFLECTORIZED REFLECTORIZED
-------	---------------------------------	-----------------	------------------------------------

48.0" across sides 3.8" Radius, 1.0" Border, 0.6" Indent;  
"STAY" E Mod; "IN YOUR" E Mod; "LANE" E Mod;

### Table of Letter and Object Lefts

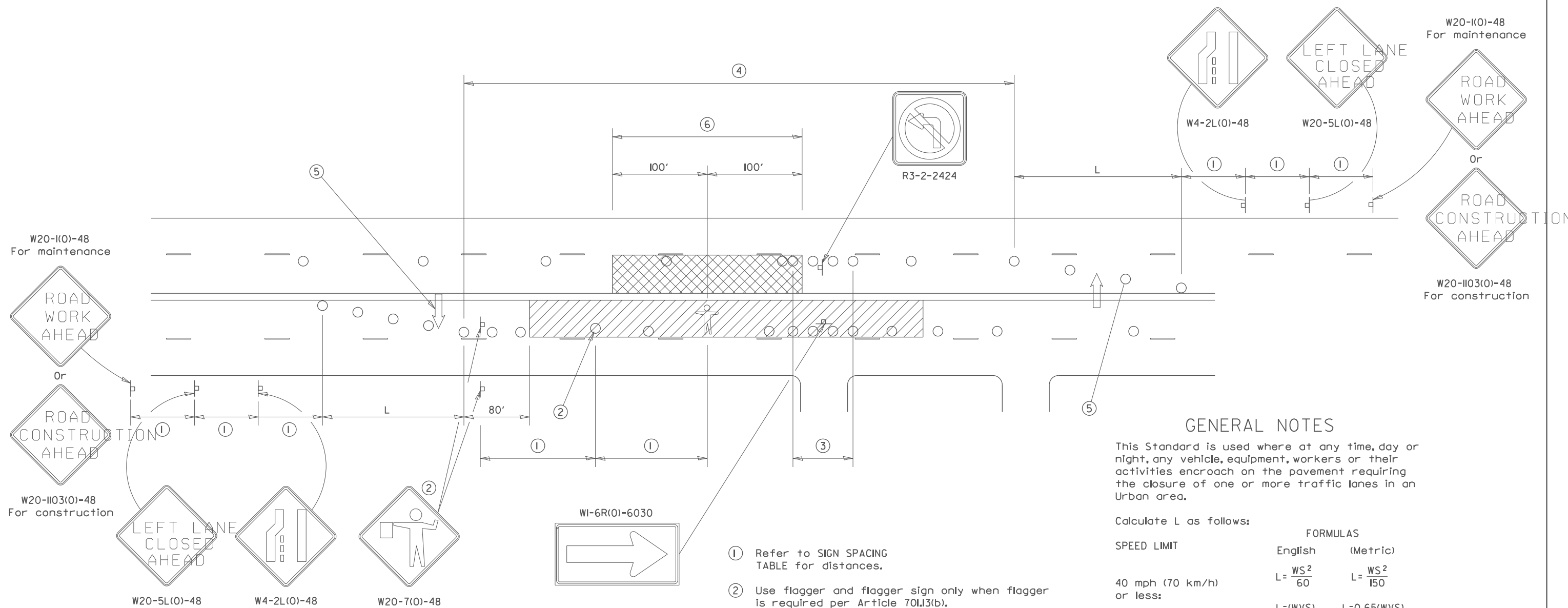
27.60	F 3.05	0.94	L 3.04	0.94	O 3.52	0.93	W 4.38	27.60
-------	-----------	------	-----------	------	-----------	------	-----------	-------

**STATE OF ILLINOIS**  
**DEPARTMENT OF TRANSPORTATION**

Sign not to scale

**WORK ZONE SIGN DETAILS      SHEET 4 OF 4      34.1**

# URBAN LANE INSIDE CLOSURE, MULTILANE, 2-WAY, WITH MOUNTABLE MEDIAN



## GENERAL NOTES

This Standard is used where at any time, day or night, any vehicle, equipment, workers or their activities encroach on the pavement requiring the closure of one or more traffic lanes in an Urban area.

Calculate L as follows:

SPEED LIMIT

## FORMULAS

English (Metric)

$$L = \frac{WS^2}{60}$$

$$L = \frac{WS^2}{150}$$

40 mph (70 km/h)  
or less:

45 mph (80 km/h)  
or greater:

W = Width of offset  
in feet (meters).

S = Normal posted speed  
mph (km/h).

All dimensions are in inches (millimeters) unless otherwise shown.

Lane closures in the opposite direction shall be removed when no workers are present.

Cones or reflectorized cones shall not be used during hours of darkness.

This Traffic Control detail shall be included in the cost of Traffic Control and Protection Standard 701606.

## SYMBOLS



WORK AREA



CLOSED LANE



ARROW BOARD



SIGN ON PORTABLE OR PERMANENT SUPPORT



CONE, DRUM OR BARRICADE



FLAGGER WITH TRAFFIC CONTROL SIGN.



WORKER ON FOOT

SIGN SPACING	
Posted Speed	Sign Spacing
55	500' (150 m)
50-45	350' (100 m)
<45	200' (60 m)

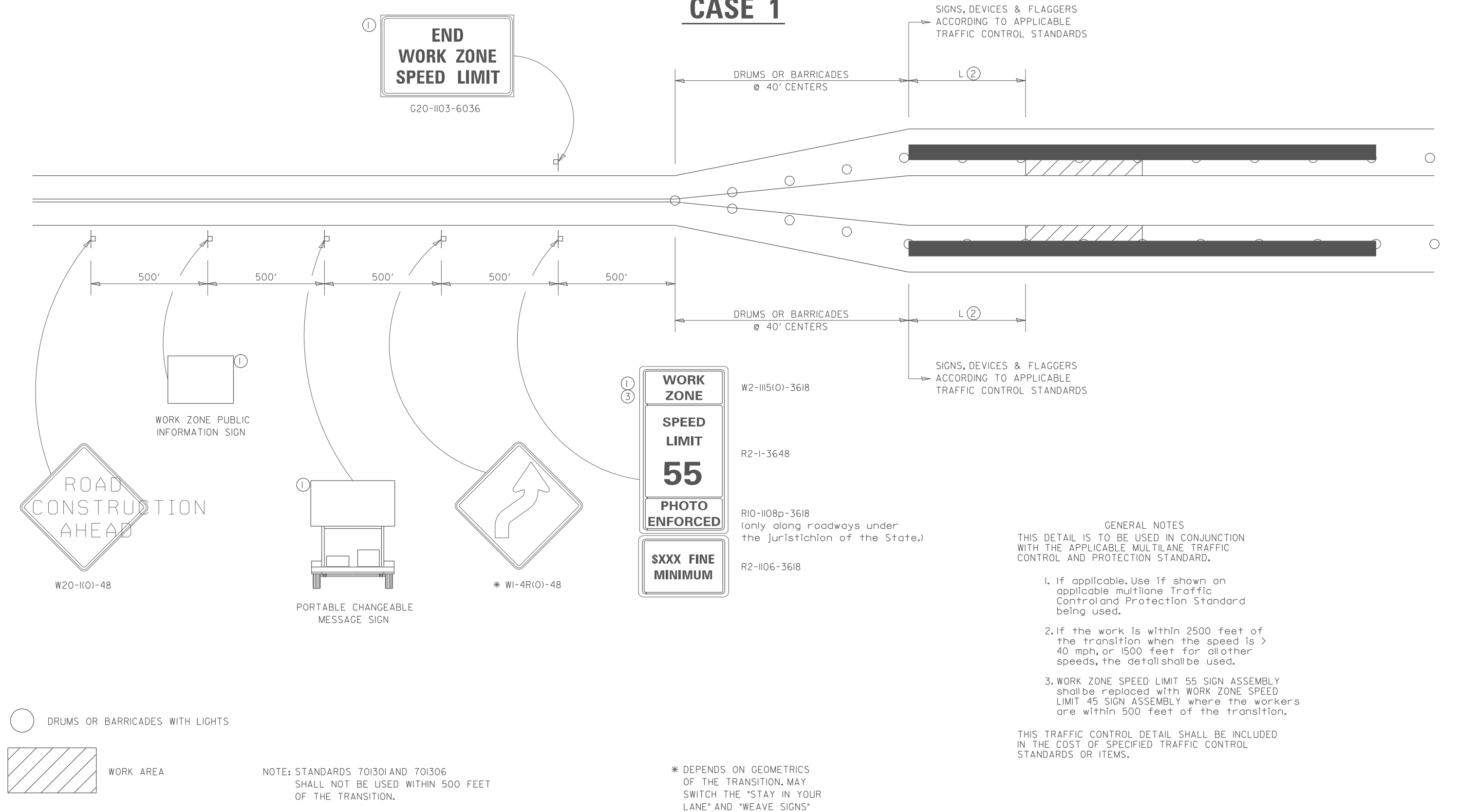
- ① Refer to SIGN SPACING TABLE for distances.
- ② Use flagger and flagger sign only when flagger is required per Article 701.13(b).
- ③ Devices at 10' centers from edge of radius return to edge of radius return when left turns are prohibited due to actively working in the intersection.
- ④ Cones at 20' (6 m) centers for 250' (75 m). Additional cones may be placed at 40' (12 m) centers. When drums or Type I or Type II barricades are used, the interval between devices may be doubled (excluding devices in intersections).
- ⑤ Cones, drums or barricades at 20' (6 m) centers in taper.
- ⑥ No equipment, materials, vehicles, or other hazards are allowed in the closed lane in the opposite direction within 100' of a worker on foot.

FILE NAME =	USER NAME = David.Doss	DESIGNED -	REVISED - 1-05-16	<div><div>STATE OF ILLINOIS</div><div>DEPARTMENT OF TRANSPORTATION</div></div>	REGION 2 / DISTRICT 2 STANDARD					F.A. RTE.	SECTION	COUNTY	TOTAL SHEETS	SHEET NO.
pw://ildot.pw.bentley.com/PWIDOT/Documents/IDOT Offices/District 2/ORD Projects/Operations/Drawings/Section/Bridge Washing Cont	PROJECT = 1-05-16	CHECKED -	REVISED - 1-05-16							VAR.	D2 BC 2026-06	VARIOUS	18	14
	PLOT SCALE = \$SCALE\$	DATE -	REVISED -		CONTRACT NO. 64V10									
	PLOT DATE = 9/30/2025	DATE -	REVISED -		SCALE:	SHEET NO.	OF	SHEETS	STA.	TO STA.	FED. ROAD DIST. NO.	ILLINOIS	FED. AID	PROJECT

# TRAFFIC CONTROL FOR TRANSITION AREAS

## CASE 1

SIGNS, DEVICES & FLAGGERS  
ACCORDING TO APPLICABLE

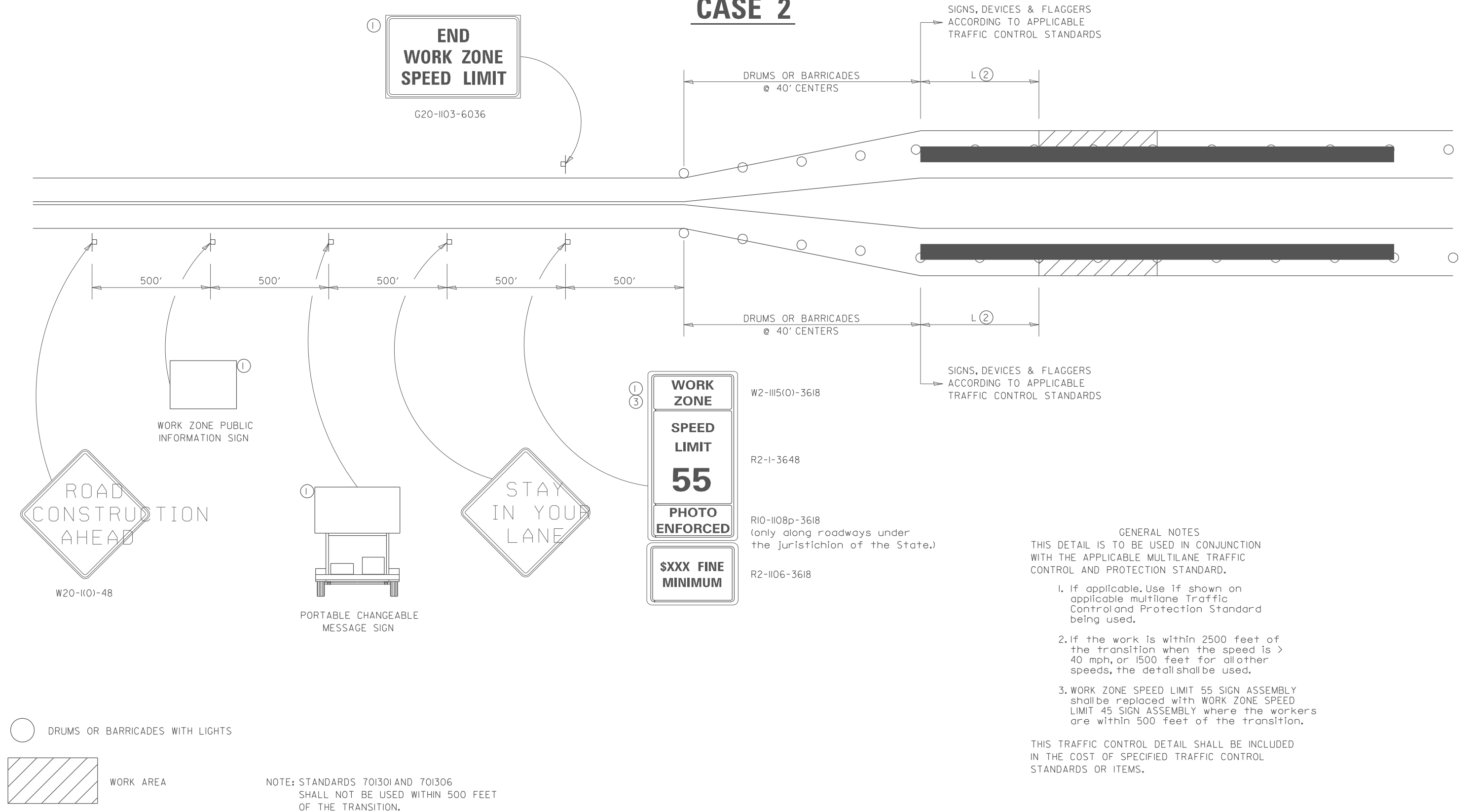


FILE NAME =	USER NAME = David.Doss	DESIGNED -	REVISED - 4-20-17	<div style="text-align: center;"> <b>STATE OF ILLINOIS</b>  <b>DEPARTMENT OF TRANSPORTATION</b> </div>	<div style="text-align: center;"> <b>REGION 2 / DISTRICT 2 STANDARD</b> </div>	F.A. RTE.	SECTION	COUNTY	TOTAL SHEETS	SHEET NO.
p:\1\ildot\pw.bentley.com\PWIDOT\Documents\1\DOT Offices\District 2\ORO Projects\Operations\DRAW\Bridge Section\Bridge Washing Cont	DRAWN - 10-26-January-1956	REVIS	64V10 Bridge Washing at various locations (8 sheets)			VAR.	D2 BC 2026-06	VARIOUS	18	15
PLOT SCALE = #SCALE#	CHECKED -	REVISED - 8-27-13								
PLOT DATE = 9/30/2025	DATE - 1-16-13	REVISED - 1-16-13								
				SCALE:	SHEET NO. OF SHEETS	STA. TO STA.	FED. ROAD DIST. NO. ILLINOIS FED. AID PROJECT			
				CONTRACT NO. 64V10						

# TRAFFIC CONTROL FOR TRANSITION AREAS

## CASE 2

SIGNS, DEVICES & FLAGGERS  
ACCORDING TO APPLICABLE

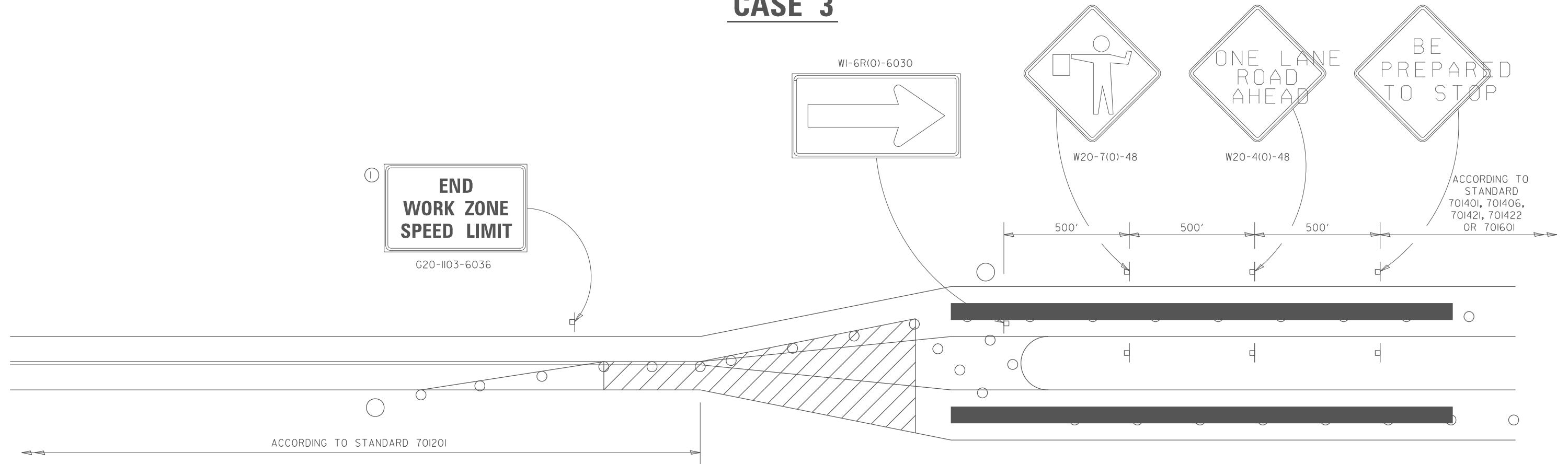


FILE NAME =	USER NAME = David.Doss	DESIGNED -	REVISED - 4-20-17	<div>STATE OF ILLINOIS DEPARTMENT OF TRANSPORTATION</div>	<div>REGION 2 / DISTRICT 2 STANDARD</div>	F.A. RTE.	SECTION	COUNTY	TOTAL SHEETS	SHEET NO.
p:\1\ldot\pw.bentley.com\PWIDOT\Documents\1\DOT Offices\District 2\ORO Projects\Operations\DRAW\Bridge Section\Bridge Washing Cont	1\DOT Offices\District 2\ORO Projects\Operations\DRAW\Bridge Section\Bridge Washing Cont	REVISOR	REVISED - 10-16-16			VAR.	D2 BC 2026-06	VARIOUS	18	16
PLOT SCALE = #SCALE#	CHECKED -	REVISED - 8-27-13	CONTRACT NO. 64V10							
PLOT DATE = 9/30/2025	DATE -	REVISED - 1-16-13	SCALE:			SHEET NO. OF	SHEETS	STA. TO STA.	FED. ROAD DIST. NO.	ILLINOIS FED. AID PROJECT



# TRAFFIC CONTROL FOR TRANSITION AREAS

## CASE 3



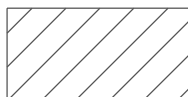
GENERAL NOTES  
THIS DETAIL IS TO BE USED IN CONJUNCTION  
WITH THE APPLICABLE MULTILANE TRAFFIC  
CONTROL AND PROTECTION STANDARD.

1. If applicable, Use if shown on applicable multilane Traffic Control and Protection Standard being used.
2. If the work is within 2500 feet of the transition when the speed is > 40 mph, or 1500 feet for all other speeds, the detail shall be used.
3. WORK ZONE SPEED LIMIT 55 SIGN ASSEMBLY shall be replaced with WORK ZONE SPEED LIMIT 45 SIGN ASSEMBLY where the workers are within 500 feet of the transition.

THIS TRAFFIC CONTROL DETAIL SHALL BE INCLUDED  
IN THE COST OF SPECIFIED TRAFFIC CONTROL  
STANDARDS OR ITEMS.

○ FLAGGER WITH TRAFFIC CONTROL SIGN

○ DRUMS OR BARRICADES WITH LIGHTS



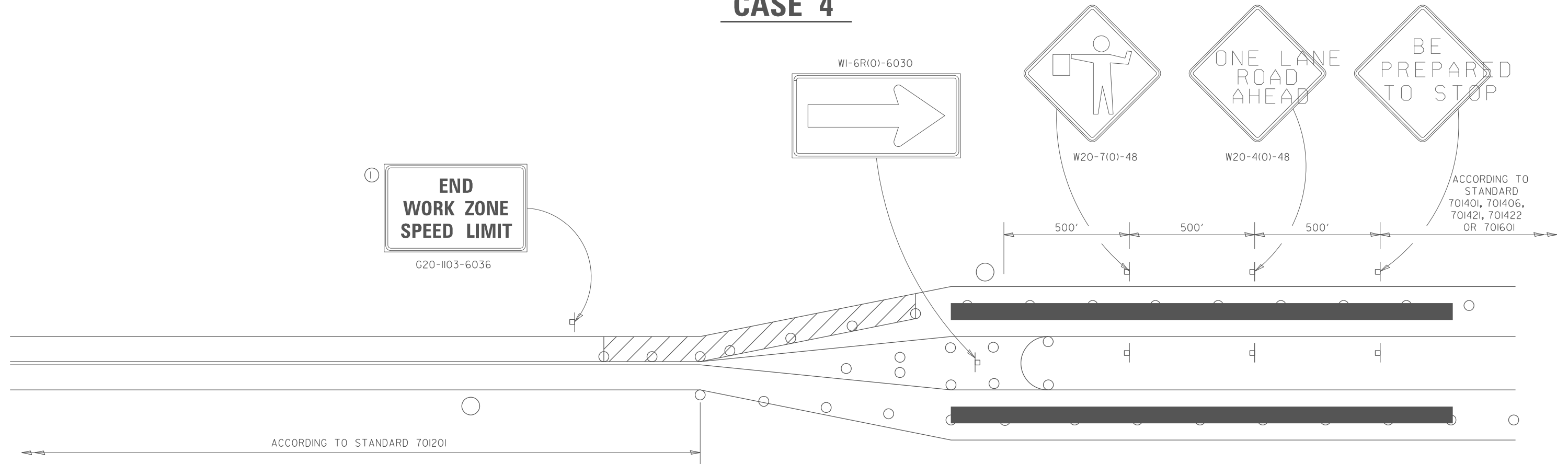
WORK AREA

NOTE: STANDARDS 701301 AND 701306  
SHALL NOT BE USED WITHIN 500 FEET  
OF THE TRANSITION.

FILE NAME =	USER NAME = David.Doss	DESIGNED -	REVISED - 4-20-17	<div>STATE OF ILLINOIS DEPARTMENT OF TRANSPORTATION</div>	<div>REGION 2 / DISTRICT 2 STANDARD</div>	F.A. RTE.	SECTION	COUNTY	TOTAL SHEETS	SHEET NO.	
p:\1\ildot\pw.bentley.com\PWIDOT\Documents\1\DOT Offices\District 2\ORO Projects\Operations\DRAW\Bridge Section\Bridge Washing Cont	1\DOT Offices\District 2\ORO Projects\Operations\DRAW\Bridge Section\Bridge Washing Cont	REVISED - 10-5-16	REVISED - 10-5-16			VAR.	D2 BC 2026-06	VARIOUS	18	17	
PLOT SCALE = #SCALE#	CHECKED -	REVISED - 8-27-13	REVISED - 8-27-13			CONTRACT NO. 64V10					
PLOT DATE = 9/30/2025	DATE -	REVISED - 3-05-12	REVISED - 3-05-12			SCALE:	SHEET NO. OF	SHEETS	STA.	TO STA.	FED. ROAD DIST. NO.

# TRAFFIC CONTROL FOR TRANSITION AREAS

## CASE 4



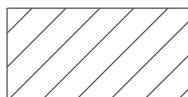
GENERAL NOTES  
THIS DETAIL IS TO BE USED IN CONJUNCTION  
WITH THE APPLICABLE MULTILANE TRAFFIC  
CONTROL AND PROTECTION STANDARD.

1. If applicable, Use if shown on applicable multilane Traffic Control and Protection Standard being used.
2. If the work is within 2500 feet of the transition when the speed is > 40 mph, or 1500 feet for all other speeds, the detail shall be used.
3. WORK ZONE SPEED LIMIT 55 SIGN ASSEMBLY shall be replaced with WORK ZONE SPEED LIMIT 45 SIGN ASSEMBLY where the workers are within 500 feet of the transition.

THIS TRAFFIC CONTROL DETAIL SHALL BE INCLUDED  
IN THE COST OF SPECIFIED TRAFFIC CONTROL  
STANDARDS OR ITEMS.

○ FLAGGER WITH TRAFFIC CONTROL SIGN

☐ DRUMS OR BARRICADES WITH LIGHTS



WORK AREA

NOTE: STANDARDS 70I30I AND 70I306  
SHALL NOT BE USED WITHIN 500 FEET  
OF THE TRANSITION.

FILE NAME =	USER NAME = David.Doss	DESIGNED -	REVISED - 4-20-17	<div style="text-align: center;"> <b>STATE OF ILLINOIS</b>  <b>DEPARTMENT OF TRANSPORTATION</b> </div>	<div style="text-align: center;"> <b>REGION 2 / DISTRICT 2 STANDARD</b> </div>	F.A. RTE.	SECTION	COUNTY	TOTAL SHEETS	SHEET NO.
p:\1\ildot\pw.bentley.com\PWIDOT\Documents\1\DOT Offices\District 2\ORO Projects\Operations\DRAW\Bridge Section\Bridge Washing Cont	DRAWN - 10/26/January 10-16-64V10 Bridge	CHECKED -	REVISED - 8-27-13			VAR.	D2 BC 2026-06	VARIOUS	18	18
PLOT SCALE = #SCALE#	CHECKED -	REVISED - 8-27-13	REVISED - 3-05-12			CONTRACT NO. 64V10				
PLOT DATE = 9/30/2025	DATE -	REVISED - 3-05-12				SCALE:	SHEET NO. OF SHEETS	STA. TO STA.	FED. ROAD DIST. NO.	ILLINOIS FED. AID PROJECT