

F.A. RTE.	SECTION	COUNTY	TOTAL SHEETS	SHEET NO.
VAR.	D2 BC 2026-05	VARIOUS	15	1
		ILLINOIS	CONTRACT NO. 64V09	

01-16-2026 LETTING ITEM 046

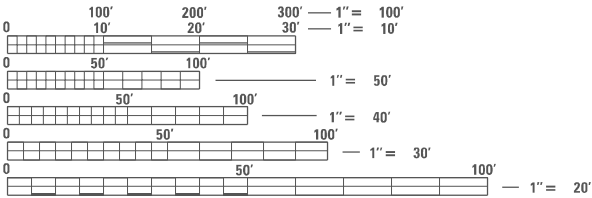
STATE OF ILLINOIS
DEPARTMENT OF TRANSPORTATION

FOR INDEX OF SHEETS, SEE SHEET NO. 2
FOR STATE STANDARDS, SEE SHEET NO. 2

PROPOSED
HIGHWAY PLANS

VARIOUS ROUTES
SECTION: D2 BC 2026-05
PROJECT:
TYPE of IMPROVEMENT: BRIDGE WASHING
HENRY & ROCK ISLAND COUNTIES

C-92-015-26

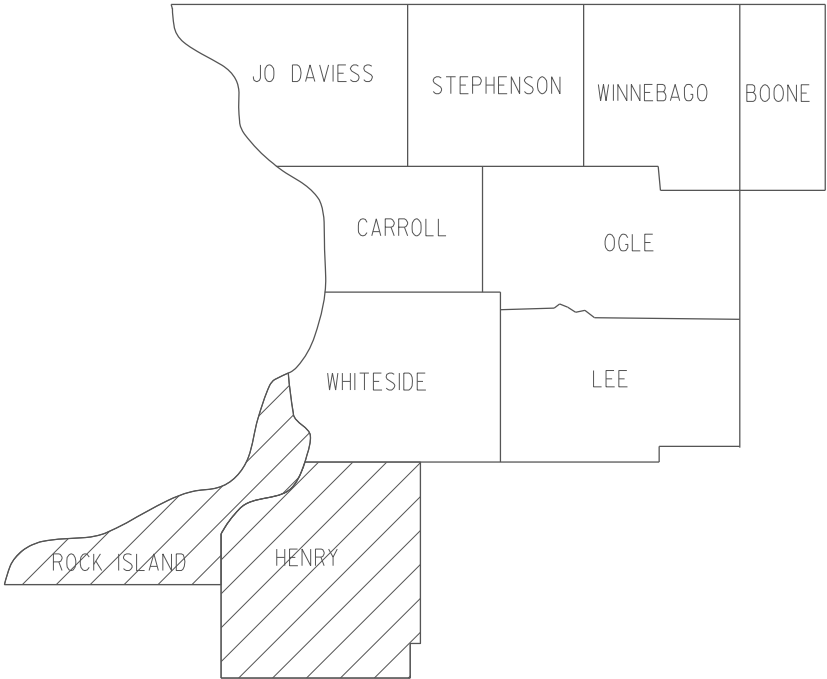


FULL SIZE PLANS HAVE BEEN PREPARED USING STANDARD
ENGINEERING SCALES, REDUCED SIZED PLANS WILL NOT
CONFORM TO STANDARD SCALES. IN MAKING MEASUREMENTS
ON REDUCED PLANS, THE ABOVE SCALES MAY BE USED.

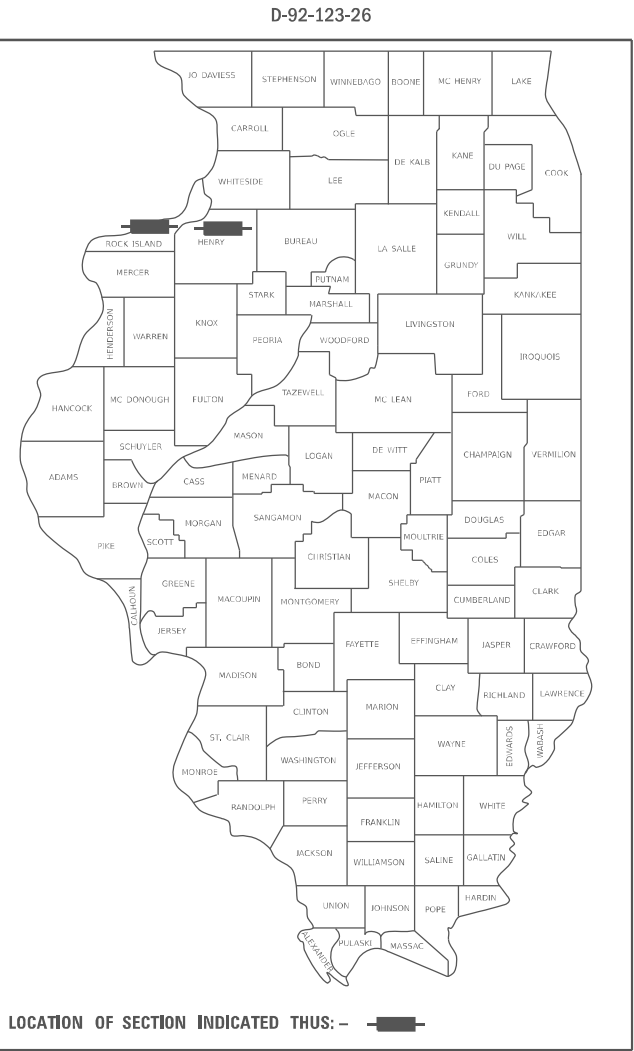
J.U.L.I.E.
JOINT UTILITY LOCATION INFORMATION FOR EXCAVATION
1-800-892-0123
OR 811

PROJECT ENGINEER: DAVID DOSS (815) 284-5416
PROJECT MANAGER: DERRICK LOPEZ (815) 284-5398

CONTRACT NO. 64V09



LOCATION OF SECTION INDICATED THUS: - [Hatched Box Symbol]



STATE OF ILLINOIS
DEPARTMENT OF TRANSPORTATION

SUBMITTED October 1 2025
Julia Thompson
REGIONAL ENGINEER

December 5 2025
Scott A. Etkin
ENGINEER OF DESIGN AND ENVIRONMENT

December 5 2025
David Doss
DIRECTOR OF HIGHWAYS PROJECT IMPLEMENTATION

PRINTED BY THE AUTHORITY
OF THE STATE OF ILLINOIS

INDEX OF SHEETS

- 1 COVER SHEET
- 2 INDEX OF SHEETS & STATE STANDARDS
- 3 SUMMARY OF QUANTITIES
- 4 SCHEDULE OF QUNATITIES
- 5 LOCATION MAP ROCK ISLAND COUNTY
- 6 LOCATION MAP HENRY COUNTY
- 7–10 WORK ZONE SIGN DETAILS (DIST STD 34.1)
- 11 URBAN LANE INSIDE CLOSURE, MULTILANE, 2–WAY, WITH MOUNTABLE MEDIAN (DIST STD 35.1)
- 12–15 TRAFFIC CONTROL FOR TRANSITION AREAS (DIST STD 38.1)

STATE STANDARDS

- 701006–05 OFF–ROAD OPERATIONS, 2L, 2W, 15’(4.5m) TO 24” (600mm) FROM PAVEMENT EDGE
- 701101–05 OFF–ROAD OPERATIONS, MULTILANE, 15’(4.5m) TO 24”(600mm) FROM PAVEMENT EDGE
- 701301–04 LANE CLOSURE, 2L, 2W, SHORT TIME OPERATIONS
- 701400–12 APPROACH TO LANE CLOSURE, FREEWAY/EXPRESSWAY
- 701406–13 LANE CLOSURE, FREEWAY/EXPRESSWAY, DAY OPERATIONS ONLY
- 701411–09 LANE CLOSURE, MULTILANE, AT ENTRANCE OR EXIT RAMP FOR SPEEDS ≥ 45 MPH
- 701421–08 LANE CLOSURE, MULTILANE, DAY OPERATIONS ONLY, FOR SPEEDS ≥ 45 TO 55 MPH
- 701606–10 URBAN SINGLE LANE CLOSURE, MULTILANE, 2W WITH MOUNTABLE MEDIAN
- 701801–06 SIDEWALK, CORNER OR CROSSWALK CLOSURE
- 701901–11 TRAFFIC CONTROL DEVICES
- 720011–01 METAL POSTS FOR SIGNS, MARKERS AND DELINEATORS
- 728001–01 TELESCOPING STEEL SIGN SUPPORT
- 729001–01 APPLICATIONS OF TYPES A & B METAL POSTS (FOR SIGNS & MARKERS)

	USER NAME = David.Doss	DESIGNED -	REVISED -	STATE OF ILLINOIS DEPARTMENT OF TRANSPORTATION	INDEX OF SHEETS & STATE STANDARDS		F.A. RTE.	SECTION	COUNTY	TOTAL SHEETS	SHEET NO.
		DRAWN -	REVISED -				VAR.	D2 BC 2026-05	VARIOUS	15	2
	PLOT SCALE = \$SCALE\$	CHECKED -	REVISED -				CONTRACT NO. 64V09				
	PLOT DATE = 9/30/2025	DATE -	REVISED -		SCALE:	SHEET OF SHEETS	STA.	TO STA.	ILLINOIS FED. AID PROJECT		

SUMMARY OF QUANTITIES

Paycode	Description	Units	ROCK ISLAND COUNTY 0047 100% STATE	HENRY COUNTY 0047 100% STATE	Total
59200101	BRIDGE WASHING NO. 1	EACH	1		1
59200102	BRIDGE WASHING NO. 2	EACH	1		1
59200103	BRIDGE WASHING NO. 3	EACH	1		1
59200104	BRIDGE WASHING NO. 4	EACH	1		1
59200105	BRIDGE WASHING NO. 5	EACH		1	1
67100100	MOBILIZATION	L SUM	0.80	0.20	1
70100310	TRAFFIC CONTROL AND PROTECTION, STANDARD 701421	L SUM	0.80	0.20	1
70100420	TRAFFIC CONTROL AND PROTECTION, STANDARD 701411	EACH	3		3
70100700	TRAFFIC CONTROL AND PROTECTION, STANDARD 701406	L SUM	1		1
70102625	TRAFFIC CONTROL AND PROTECTION, STANDARD 701606	L SUM	1		1
70102640	TRAFFIC CONTROL AND PROTECTION, STANDARD 701801	L SUM	1		1

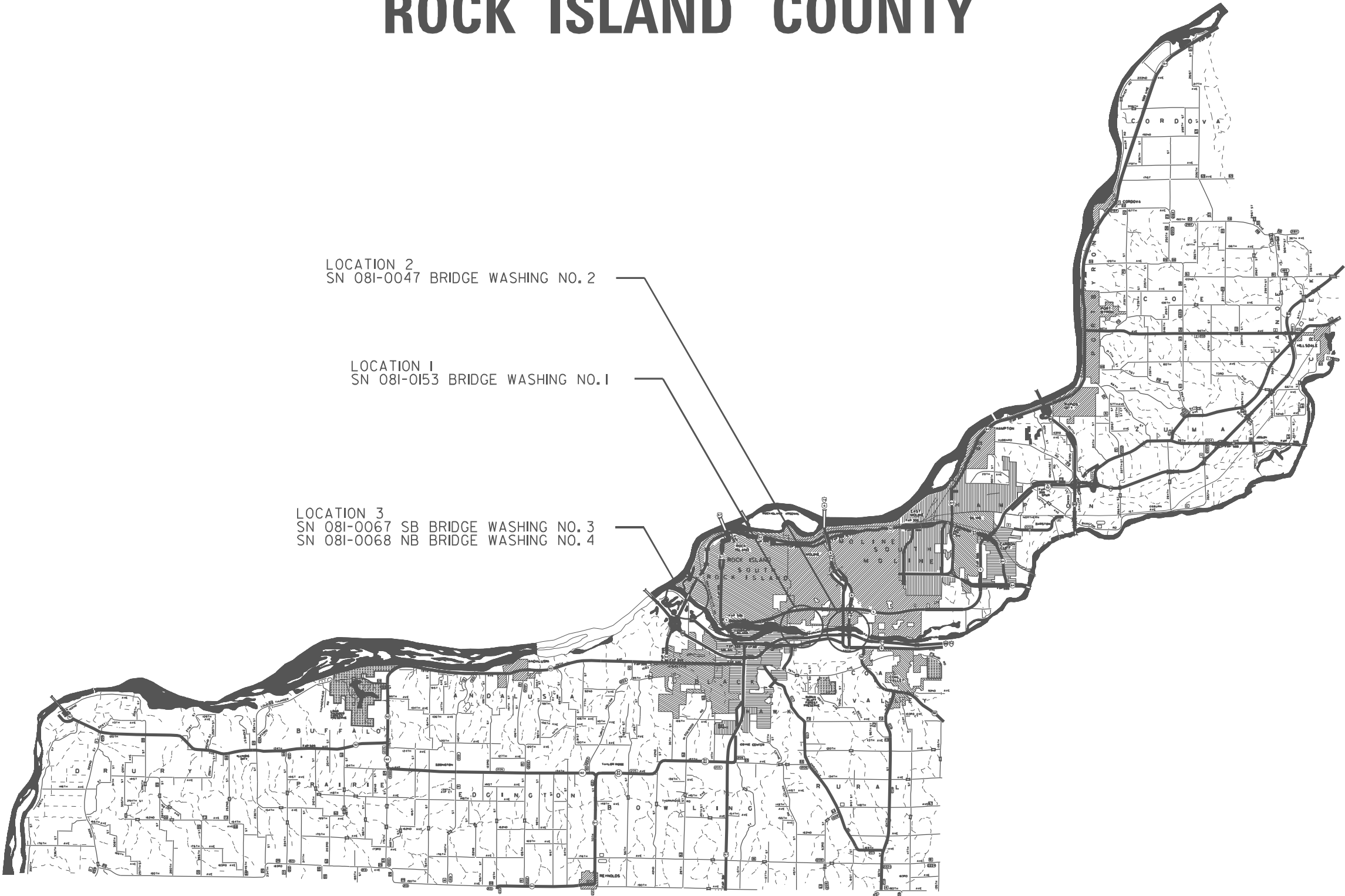
MODEL: Default
FILE: \\ntcpc-pw\p\dot-aw-bentley.com\PIV\DOT\Documents\DOT 0 cas\District 2\ORR Projects\Operations\Bridge Section\Bridge Washing over Red River (5)\CADD\64V09-shr-cover.dgn

SCHEDULE OF QUANTITIES

Pay Item	Project Location	SN	Facility Carried	Feature Crossed	Bridge Location	Tra c Control
BRIDGE WASHING NO. 1	1	081-0153	Milan Beltway	Rock River	South of Rock Island	701421 701411
BRIDGE WASHING NO. 2	2	081-0047	27TH ST-Moline	Rock River	South Edge of Moline	701606 DIST STD 35.1 701801
BRIDGE WASHING NO. 3	3	081-0067	IL 92 SB (CENT FRWY)	Rock River Hennepin Canal	0.5 MI S 31ST ST R.I.	701400 701406 701411
BRIDGE WASHING NO. 4		081-0068	IL 92 NB (CENT FRWY)	Rock River Hennepin Canal	0.5 MI S 31ST ST R.I.	701400 701406 701411
BRIDGE WASHING NO. 5	4	037-0128	IL 84	Rock River	At Rock Island Co. Line	701421 DIST STD 38.1

MODEL: Default
FILE: \\ntpc-pw\llet-cw-bentley.com\PIV\DOT\Documents\DOT 0 cas\District 2\ORR Projects\Operations\Bridge Section\Bridge Washing over Rock River (5)\CADD\64V09-shr-cover.dgn

ROCK ISLAND COUNTY



LOCATION 2
SN 08I-0047 BRIDGE WASHING NO. 2

LOCATION 1
SN 08I-0153 BRIDGE WASHING NO. 1

LOCATION 3
SN 08I-0067 SB BRIDGE WASHING NO. 3
SN 08I-0068 NB BRIDGE WASHING NO. 4

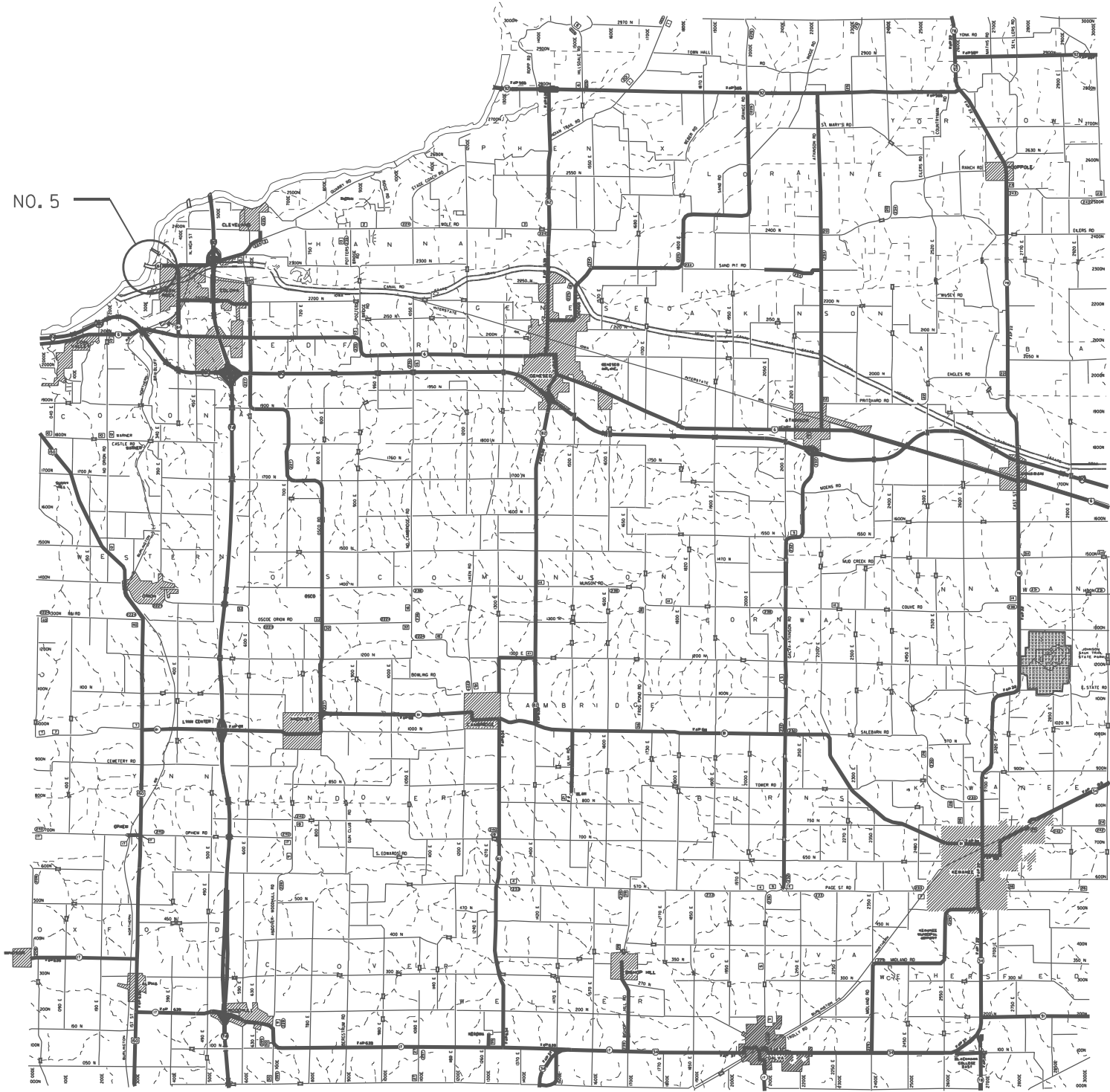
MODEL: Default
FILE: \\delt-aw.bentley.com\\P\\V\\DOT\\Documents\\DOT 0 cas\\District 2\\ORO Projects\\Operations\\Bridge Section\\Bridge Washing over Red River (5)\\CADD\\64V09-shr-cover.dgn

	USER NAME = David.Doss		DESIGNED -	REVISED -	STATE OF ILLINOIS DEPARTMENT OF TRANSPORTATION	ROCK ISLAND COUNTY LOCATION MAP				F.A. RTE.	SECTION		COUNTY	TOTAL SHEETS	SHEET NO.
			DRAWN -	REVISED -						VAR.	D2 BC 2026-05		VARIOUS	15	5
	PLOT SCALE = \$SCALE\$		CHECKED -	REVISED -						CONTRACT NO. 64V09					
	PLOT DATE = 9/30/2025		DATE -	REVISED -		SCALE:		SHEET	OF	SHEETS	STA.	TO STA.			
							ILLINOIS FED. AID PROJECT								

HENRY COUNTY



LOCATION 4
SN 037-0128
BRIDGE WASHING NO. 5



MODEL: Default
FILE: h:\dot\aw\hwy.com\pl\w\dot\Documents\DOT 0 cas\District 2\ORD Projects\Operations\Bridges Section\Bridges Washing over Red River (5)\CADD\64V09-shr-cover.dgn

USER NAME	= David.Doss	DESIGNED	-	REVISED	-
		DRAWN	-	REVISED	-
PLOT SCALE	= \$SCALE\$	CHECKED	-	REVISED	-
PLOT DATE	= 9/30/2025	DATE	-	REVISED	-

STATE OF ILLINOIS
DEPARTMENT OF TRANSPORTATION

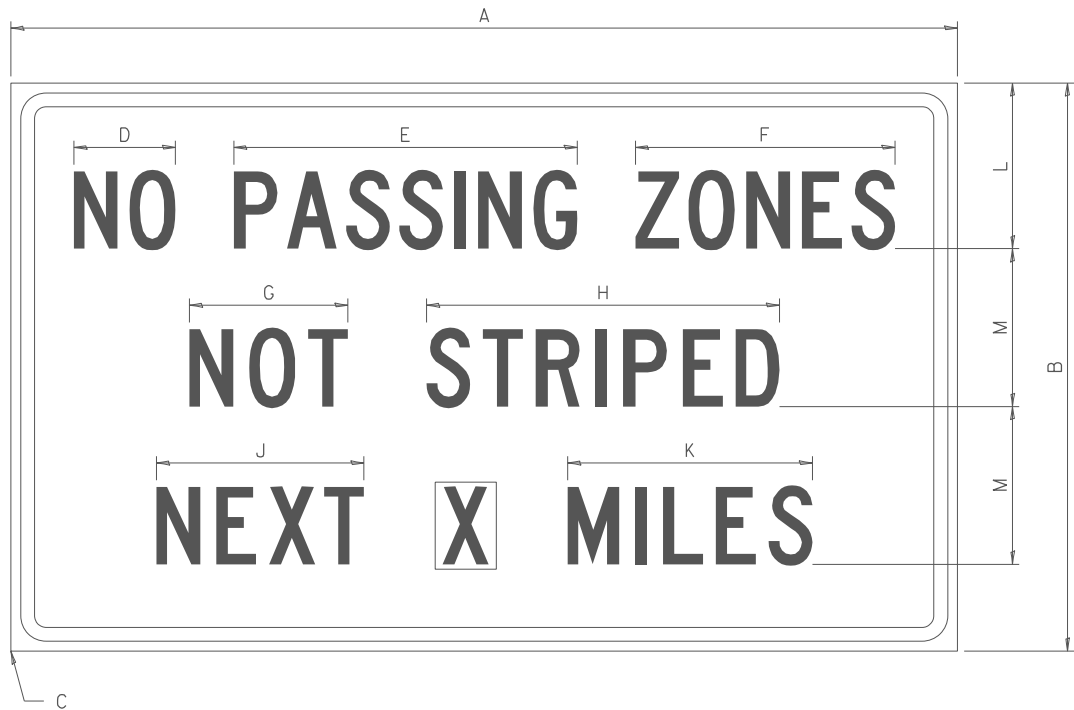
HENRY COUNTY
LOCATION MAP

SCALE: SHEET OF SHEETS STA. TO STA.

F.A. RTE.	SECTION	COUNTY	TOTAL SHEETS	SHEET NO.
VAR.	D2 BC 2026-05	VARIOUS	15	6
CONTRACT NO. 64V09				
ILLINOIS		FED. AID PROJECT		

WORK ZONE SIGN DETAILS

ILLINOIS STANDARD G20-I100



COLOR LEGEND AND BORDER BACKGROUND BLACK ORANGE NON-REFLECTORIZED REFLECTORIZED

SIGN SIZE	DIMENSIONS											
	A	B	C	D	E	F	G	H	J	K	L	M
60 x 36	60.00	36.00	2.25	6.4	21.80	16.40	10.00	22.40	13.20	15.50	10.50	10.00

SIGN SIZE	SERIES BY LINE			MARGIN	BORDER
	1	2	3		
60 x 36	5C	5C	5C	0.625	0.875

Sign not to scale

GENERAL NOTES

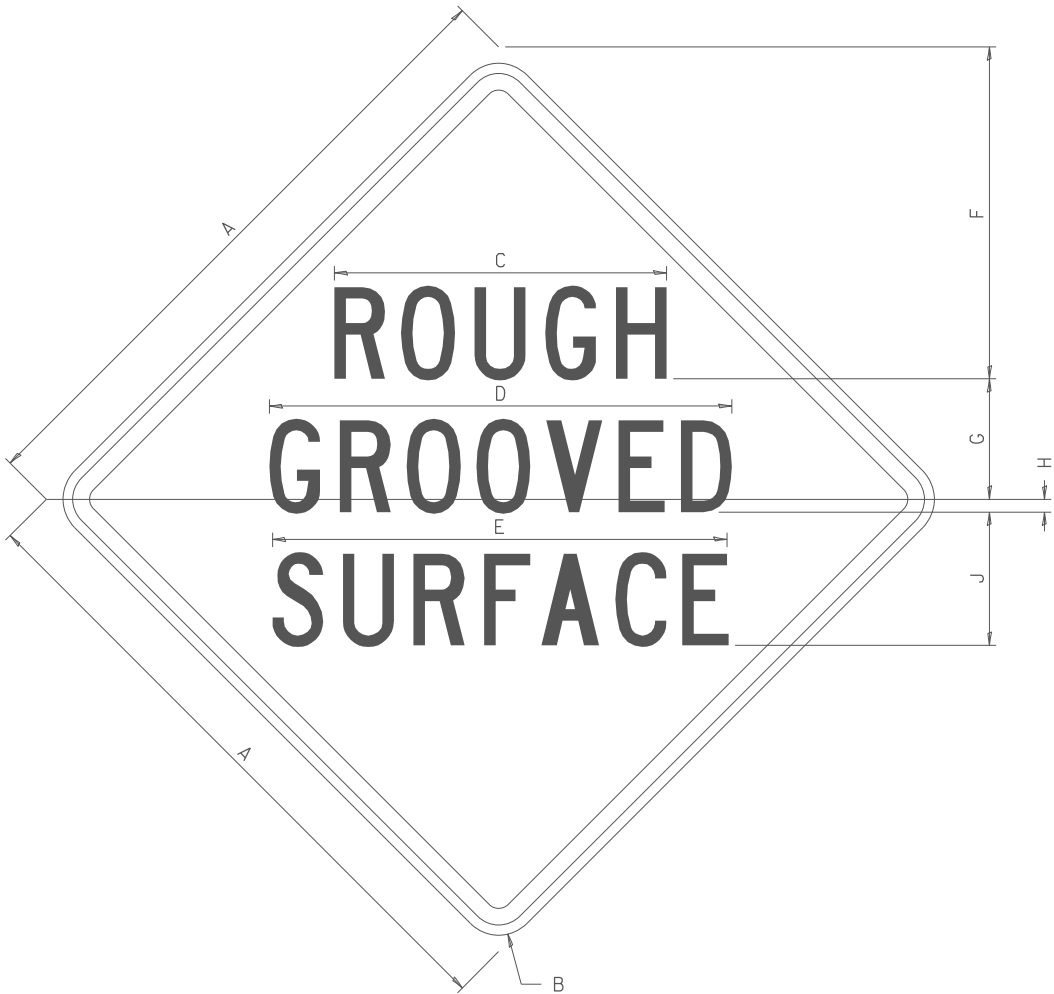
All work to furnish and install these signs shall be included in the cost of the specified traffic control standards and shall not be paid separately.

All Illinois Standard signs shall conform to the latest edition of the "Illinois Standard Highway Signs Book" in effect on the date of invitation for bids.

Signs shall meet the applicable portions of Sections 701 and 720 of the Standard Specifications.

All dimensions are in inches unless otherwise noted.

ILLINOIS STANDARD W8-I107



COLOR LEGEND AND BORDER BACKGROUND BLACK ORANGE NON-REFLECTORIZED REFLECTORIZED

SIGN SIZE	DIMENSIONS								
	A	B	C	D	E	F	G	H	J
48 x 48	48.00	3.00	25.00	34.80	34.20	24.94	9.00	1.00	10.00

SIGN SIZE	SERIES BY LINE			MARGIN	BORDER
	1	2	3		
48 x 48	7C	7C	7C	1.250	0.750

Sign not to scale

FILE NAME : p:\1\ldot-pw.bentley.com\PW\DOT\Documents\1\DOT Offices\District 2\ORD Projects\Operations\Bridges\Bridges Section\Bridges Washing Contract\64V09 Bridge Washing over Rock River (S)\CA 64V09 Bridge Washing	USER NAME = David.Doss	DESIGNED -	REVISED - 3-02-16	STATE OF ILLINOIS DEPARTMENT OF TRANSPORTATION	REGION 2 / DISTRICT 2 STANDARD	F.A. RTE.	SECTION	COUNTY	TOTAL SHEETS	SHEET NO.
						VAR.	D2 BC 2026-05	VARIOUS	15	7
	PLOT SCALE = \$SCALE\$	CHECKED -	REVISED -			CONTRACT NO. 64V09				
	PLOT DATE = 9/30/2025	DATE -	REVISED -							
		SCALE:	SHEET NO. OF	SHEETS	STA. TO STA.	FED. ROAD DIST. NO.	ILLINOIS	FED. AID PROJECT		

ILLINOIS STANDARD W12-I102



All dimensions are in inches unless otherwise noted.

① Illinois Standard signs W12-1102 and W12-1103 shall be used as described in the special provisions.

Sign not to scale

ILLINOIS STANDARD W12-I103



Sign not to scale

XX'-XX" WIDTH AND X MILES ARE VARIABLE
TOP AND BOTTOM OF BACKGROUND WHITE

FILE NAME =	USER NAME = David.Doss	DESIGNED -	REVISED - 3-02-16	<div>STATE OF ILLINOIS</div> <div>DEPARTMENT OF TRANSPORTATION</div>	REGION 2 / DISTRICT 2 STANDARD					F.A. RTE.	SECTION	COUNTY	TOTAL SHEETS	SHEET NO.
p:\11ldot\pw.bentley.com\PWIDOT\Documents\IDOT Offices\District 2\ORD Projects\Operations\CRAN Bridge Section\Bridge Washing Contract\REVISED	IDOT Offices\District 2\ORD Projects\Operations\CRAN Bridge Section\Bridge Washing Contract\REVISED	CRAN	REVISED							VAR.	D2 BC 2026-05	VARIOUS	15	8
PLOT SCALE = \$SCALE\$	CHECKED -	REVISED -	DATE		CONTRACT NO. 64V09									
PLOT DATE = 9/30/2025	CHECKED -	REVISED -	DATE		SCALE:	SHEET NO. OF SHEETS	STA. TO STA.	FED. ROAD DIST. NO.	ILLINOIS	FED. AID PROJECT				

WORK ZONE SIGN DETAILS

ROAD CLOSED TO OVERSIZED LOADS

STOP LINE SIGN FOR TEMPORARY SIGNALS



COLOR	LEGEND AND BORDER BACKGROUND	BLACK ORANGE	NON-REFLECTORIZED REFLECTORIZED
-------	------------------------------	--------------	---------------------------------

Permit Loads - Loads Over 13 Feet; 3.0" Radius, 1.3" Border;
[NO OVERSIZE -] D; [OVERWEIGHT LOADS] D 85% spacing; [XX MILES AHEAD] D;
Table of letter and object lefts.

N	O	O	V	E	R	S	I	Z	E	-
11.7	18.1	30.0	36.2	42.8	48.4	54.4	60.7	63.5	69.5	80.8

O	V	E	R	W	E	I	G	H	T	L	O	A	D	S
2.6	8.6	15.0	20.4	26.2	33.4	38.8	41.3	47.4	53.2	64.5	69.9	75.9	82.9	88.7

X	X	M	I	L	E	S	A	H	E	A	D
7.6	13.6	25.3	32.3	35.1	40.6	46.2	57.9	65.1	71.4	76.6	83.7

Sign not to scale

COLOR	LEGEND AND BORDER BACKGROUND	BLACK WHITE	NON-REFLECTORIZED REFLECTORIZED
-------	------------------------------	-------------	---------------------------------

SIGN SIZE	SERIES BY LINE		
	1	2	3
24 x 24	4C	4C	4C

Sign not to scale

GENERAL NOTES

All work to furnish and install these signs shall be included in the cost of the specified traffic control standards and shall not be paid separately.

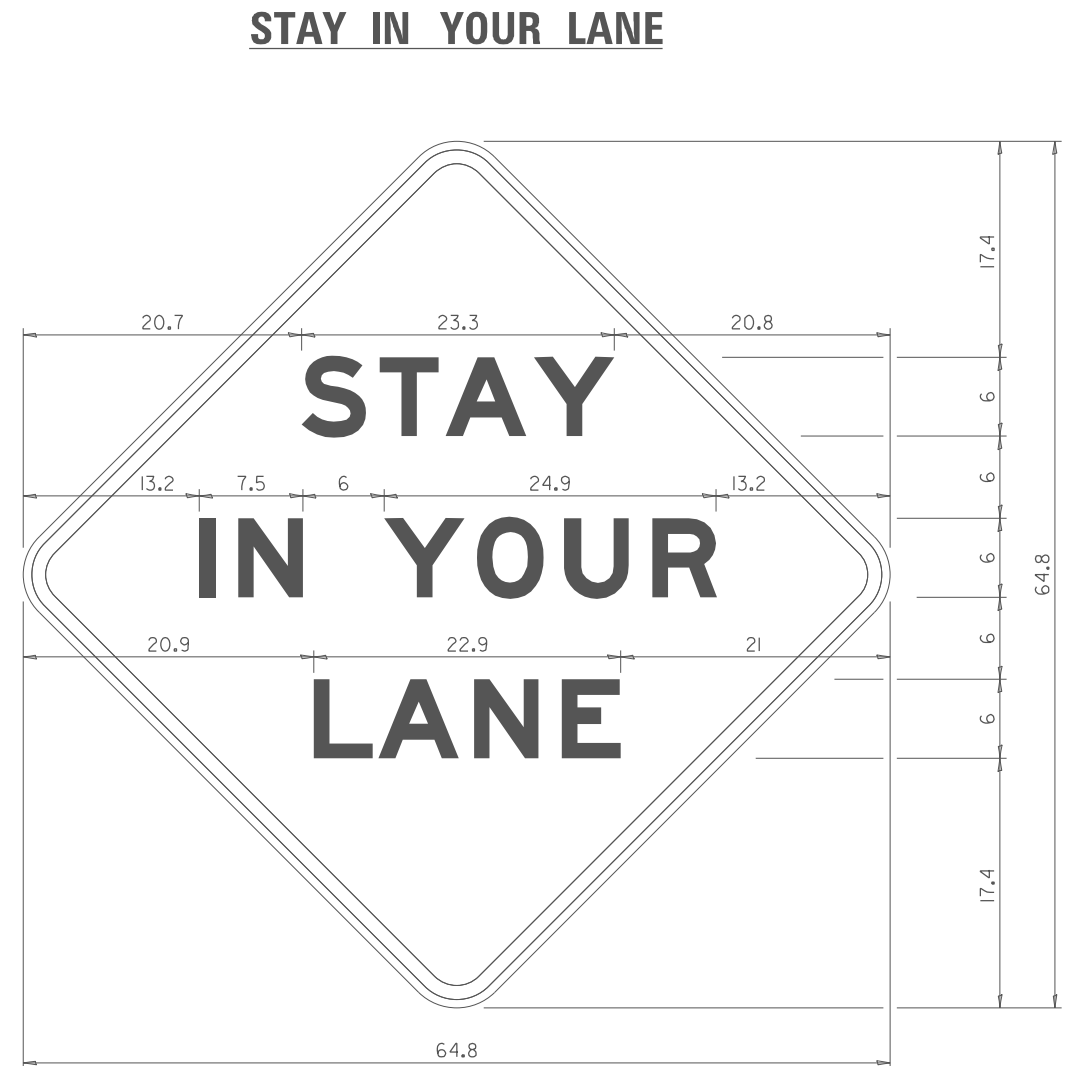
All Illinois Standard signs shall conform to the latest edition of the "Illinois Standard Highway Signs Book" in effect on the date of invitation for bids.

Signs shall meet the applicable portions of Sections 701 and 720 of the Standard Specifications.

All dimensions are in inches unless otherwise noted.

FILE NAME : p:\1\dot-p\w.bentley.com\PI\DOT\Documents\	USER NAME : David.Doss	DESIGNED -	REVISED - 3-02-16	STATE OF ILLINOIS DEPARTMENT OF TRANSPORTATION	REGION 2 / DISTRICT 2 STANDARD			F.A. RTE.	SECTION	COUNTY	TOTAL SHEETS	SHEET NO.
	PROJECT: IDOT District 2/ORD Projects/Operations/	DRAWN	REVISOR					VAR.	D2 BC 2026-05	VARIOUS	15	9
	PLOT SCALE = #SCALE#	CHECKED -	REVISED -		SCALE:			SHEET NO. OF		SHEETS	STA.	TO STA.
	PLOT DATE: 9/30/2025	DATE -	REVISED -					FED. ROAD DIST. NO.		ILLINOIS	FED. AID PROJECT	

WORK ZONE SIGN DETAILS



COLOR	LEGEND AND BORDER BACKGROUND	BLACK ORANGE	NON-REFLECTORIZED REFLECTORIZED
-------	---------------------------------	-----------------	------------------------------------

48.0" across sides 3.8" Radius, 1.0" Border, 0.6" Indent;
"STAY" E Mod; "IN YOUR" E Mod; "LANE" E Mod;

Table of Letter and Object Lefts

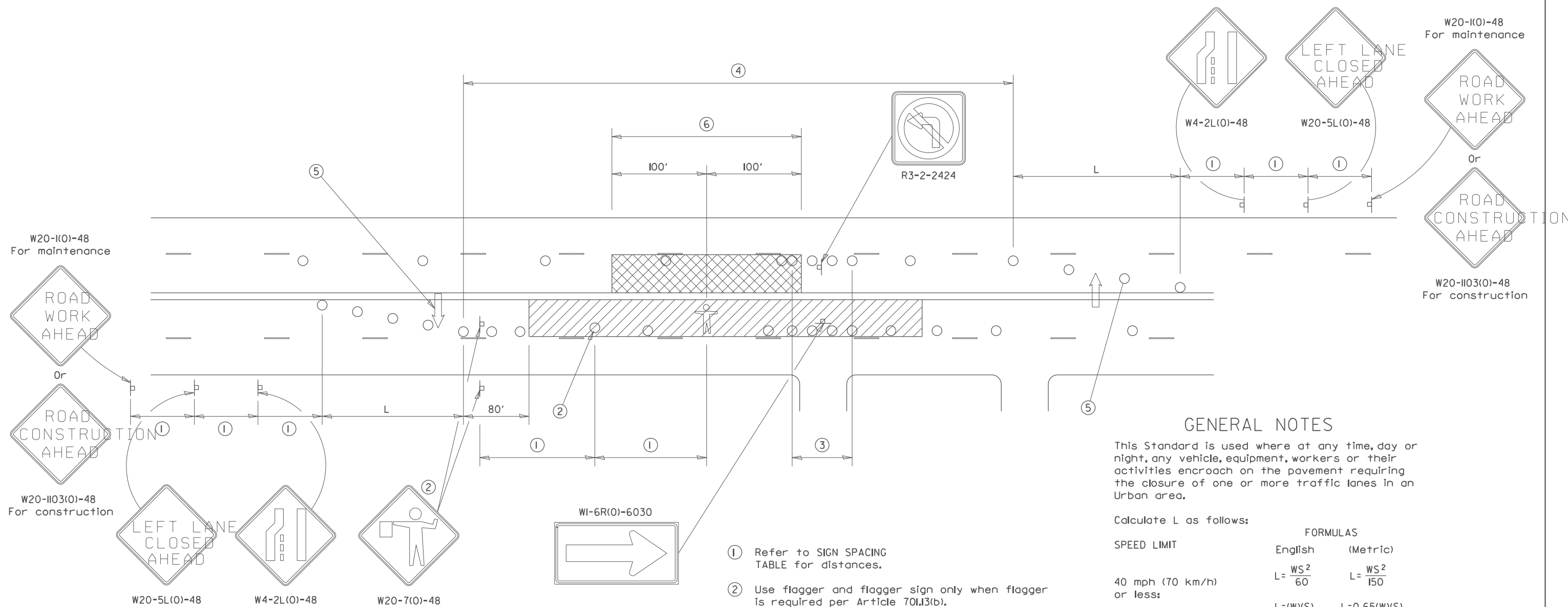
27.60	F	0.94	L	0.94	O	0.93	W	27.60
-------	---	------	---	------	---	------	---	-------

Rock River (5)/CA 11/5/09 Right of Way
STATE OF ILLINOIS
DEPARTMENT OF TRANSPORTATION

SCALE:	SHEET NO. OF	SHEETS	STA.	TO STA.
--------	--------------	--------	------	---------

F.A. RTE.	SECTION		COUNTY	TOTAL SHEETS	SHEET NO.
VAR.	D2 BC 2026-05		VARIOUS	15	10
			CONTRACT NO. 64V09		
FED. ROAD DIST. NO.		ILLINOIS	FED. AID PROJECT		

URBAN LANE INSIDE CLOSURE, MULTILANE, 2-WAY, WITH MOUNTABLE MEDIAN



GENERAL NOTES

This Standard is used where at any time, day or night, any vehicle, equipment, workers or their activities encroach on the pavement requiring the closure of one or more traffic lanes in an Urban area.

Calculate L as follows:

SPEED LIMIT

FORMULAS

English (Metric)

$$L = \frac{WS^2}{60}$$

$$L = \frac{WS^2}{150}$$

40 mph (70 km/h)
or less:

45 mph (80 km/h)
or greater:

W = Width of offset
in feet (meters).

S = Normal posted speed
mph (km/h).

All dimensions are in inches (millimeters) unless otherwise shown.

Lane closures in the opposite direction shall be removed when no workers are present.

Cones or reflectorized cones shall not be used during hours of darkness.

This Traffic Control detail shall be included in the cost of Traffic Control and Protection Standard 701606.

SYMBOLS



WORK AREA



CLOSED LANE



ARROW BOARD



SIGN ON PORTABLE OR PERMANENT SUPPORT



CONE, DRUM OR BARRICADE



FLAGGER WITH TRAFFIC CONTROL SIGN.



WORKER ON FOOT

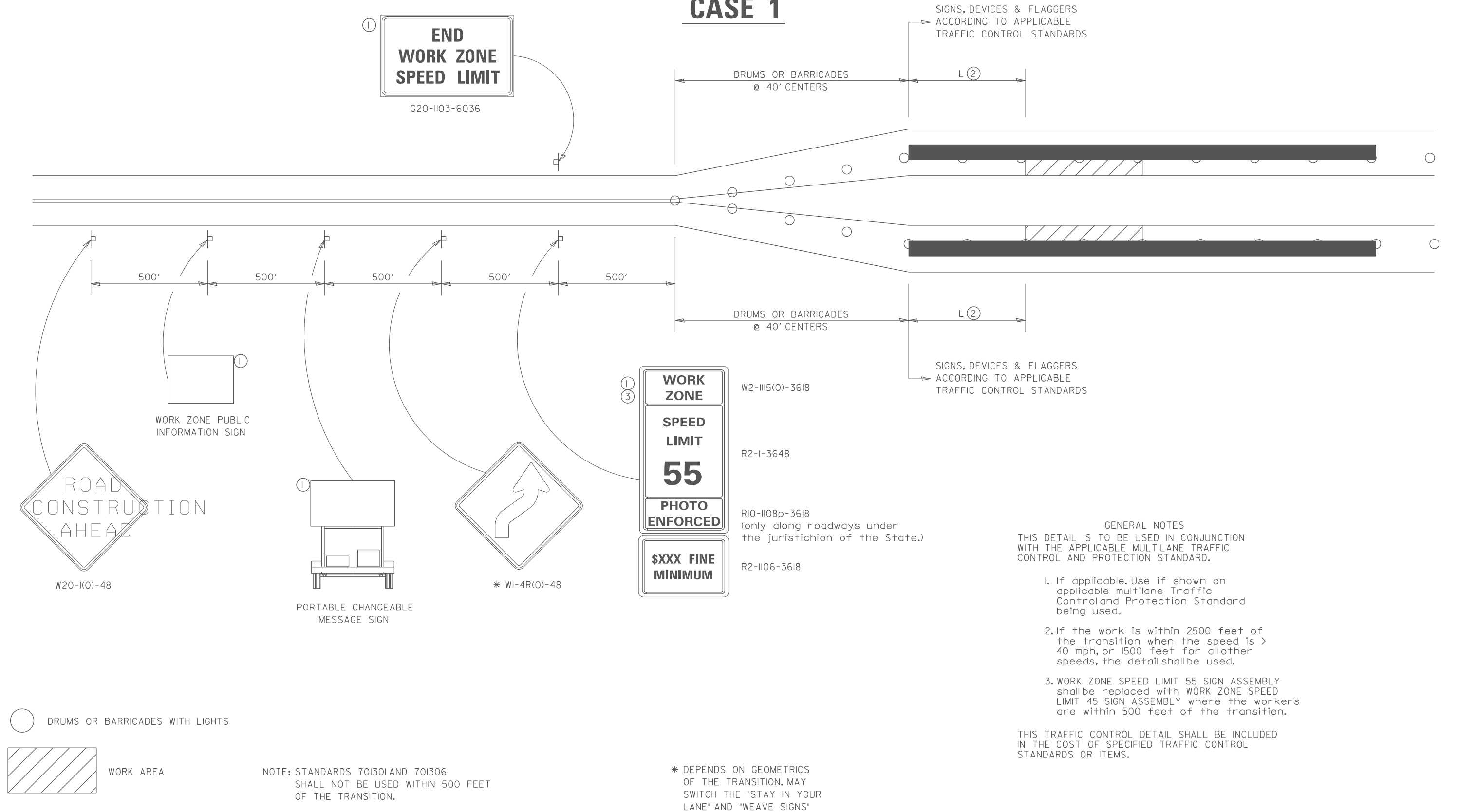
SIGN SPACING	
Posted Speed	Sign Spacing
55	500' (150 m)
50-45	350' (100 m)
<45	200' (60 m)

- ① Refer to SIGN SPACING TABLE for distances.
- ② Use flagger and flagger sign only when flagger is required per Article 701.13(b).
- ③ Devices at 10' centers from edge of radius return to edge of radius return when left turns are prohibited due to actively working in the intersection.
- ④ Cones at 20' (6 m) centers for 250' (75 m). Additional cones may be placed at 40' (12 m) centers. When drums or Type 1 or Type II barricades are used, the interval between devices may be doubled (excluding devices in intersections).
- ⑤ Cones, drums or barricades at 20' (6 m) centers in taper.
- ⑥ No equipment, materials, vehicles, or other hazards are allowed in the closed lane in the opposite direction within 100' of a worker on foot.

TRAFFIC CONTROL FOR TRANSITION AREAS

CASE 1

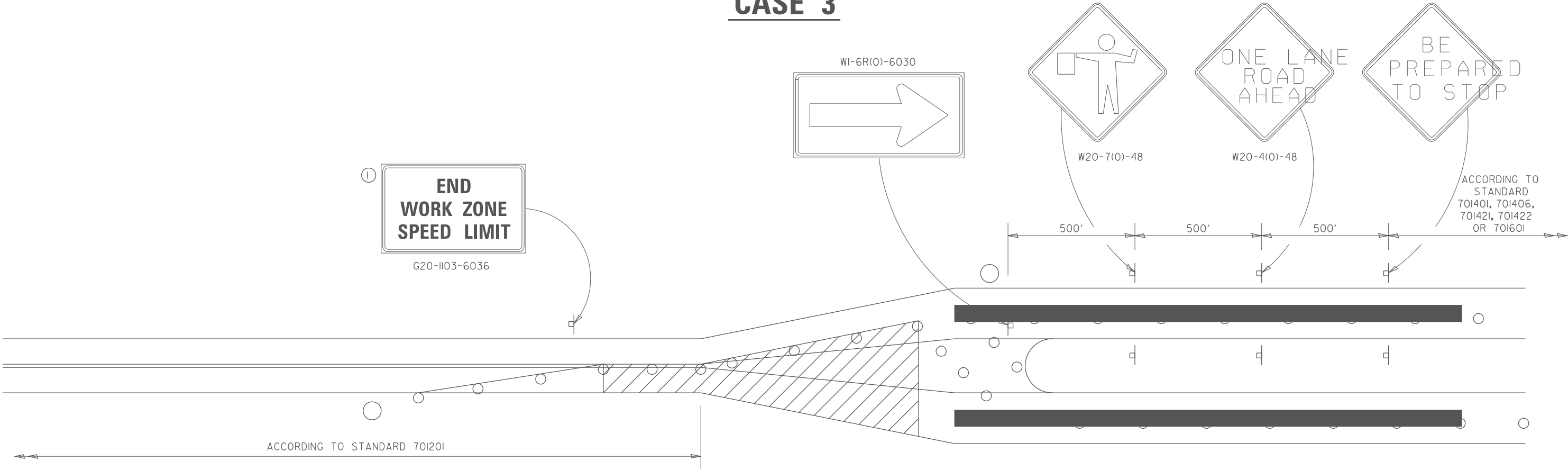
SIGNS, DEVICES & FLAGGERS
ACCORDING TO APPLICABLE



FILE NAME =	USER NAME = David.Doss	DESIGNED -	REVISED - 4-20-17	STATE OF ILLINOIS DEPARTMENT OF TRANSPORTATION	REGION 2 / DISTRICT 2 STANDARD	F.A. RTE.	SECTION	COUNTY	TOTAL SHEETS	SHEET NO.	
p:\1\ldot-pw.bentley.com\PWIDOT\Documents\DOT Offices\District 2\ORO Projects\Operations\DRAW\Bridge Section\Bridge Washing Cont	DRAWN BY: JG/January 10-16	CHECKED -	REVISED - 8-27-13			VAR.	D2 BC 2026-05	VARIOUS	I5	I2	
PLOT SCALE = \$SCALE\$	CHECKED -	REVISED - 8-27-13	SCALE:			SHEET NO. OF SHEETS	STA. TO STA.	CONTRACT NO. 64V09			
PLOT DATE = 9/30/2025	DATE - 1-16-13	REVISED - 1-16-13	FED. ROAD DIST. NO.			ILLINOIS FED. AID PROJECT					

TRAFFIC CONTROL FOR TRANSITION AREAS SHEET 2 OF 4 38.1

TRAFFIC CONTROL FOR TRANSITION AREAS
CASE 3



○

FLAGGER WITH TRAFFIC CONTROL SIGN

○

DRUMS OR BARRICADES WITH LIGHTS

WORK AREA

NOTE: STANDARDS 70I30I AND 70I306
SHALL NOT BE USED WITHIN 500 FEET
OF THE TRANSITION.

GENERAL NOTES

THIS DETAIL IS TO BE USED IN CONJUNCTION WITH THE APPLICABLE MULTILANE TRAFFIC CONTROL AND PROTECTION STANDARD.

1. If applicable, Use if shown on applicable multilane Traffic Control and Protection Standard being used.

2. If the work is within 2500 feet of the transition when the speed is > 40 mph, or 1500 feet for all other speeds, the detail shall be used.

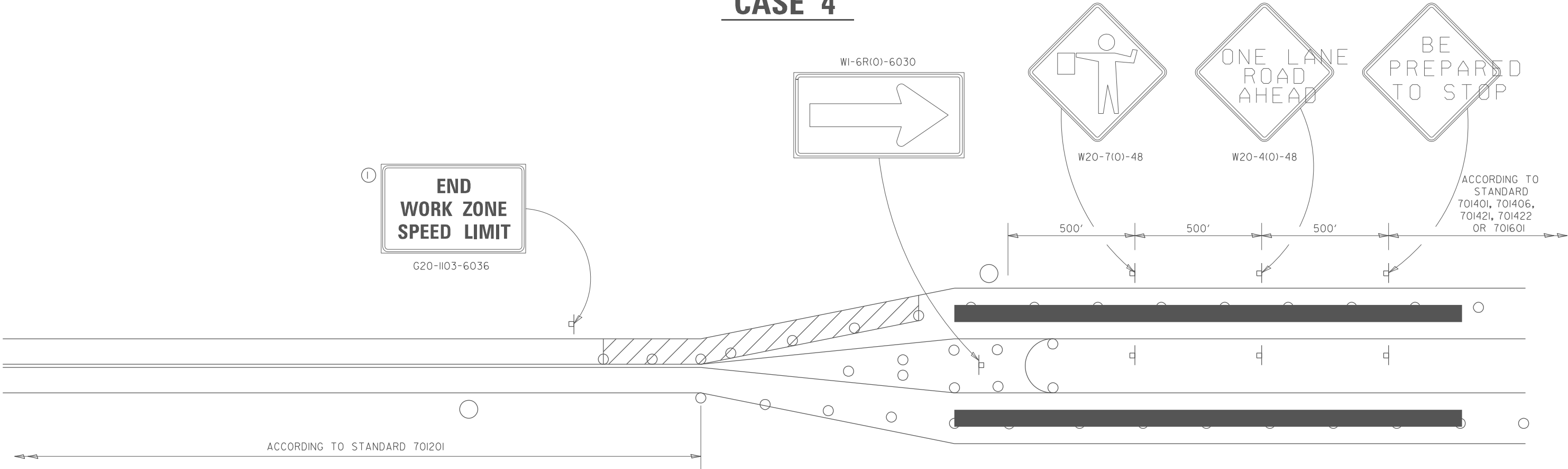
3. WORK ZONE SPEED LIMIT 55 SIGN ASSEMBLY shall be replaced with WORK ZONE SPEED LIMIT 45 SIGN ASSEMBLY where the workers are within 500 feet of the transition.


THIS TRAFFIC CONTROL DETAIL SHALL BE INCLUDED IN THE COST OF SPECIFIED TRAFFIC CONTROL STANDARDS OR ITEMS.

FILE NAME : p:\7\ildot-pw.bentley.com\PWIDOT\Documents\IDOT Offices\District 2\ORD Projects\Operations\Bridges\Bridges Section\Bridge Washing Control\REVISED January 19, 2016\64V09 Bridge Washing over Rock River (5)/CA 64V09 Bridge Washing	USER NAME = David.Doss		DESIGNED - 4-20-17		STATE OF ILLINOIS DEPARTMENT OF TRANSPORTATION	REGION 2 / DISTRICT 2 STANDARD					F.A. RTE.	SECTION		COUNTY	TOTAL SHEETS	SHEET NO.
	DRAWN		REVISED - 8-27-13								VAR.	D2 BC 2026-05		VARIOUS	15	14
	PLOT SCALE = \$SCALE\$		CHECKED -			SCALE: SHEET NO. OF SHEETS STA. TO STA.					CONTRACT NO. 64V09					
	PLOT DATE = 9/30/2025		DATE -								FED. ROAD DIST. NO. ILLINOIS FED. AID PROJECT					

TRAFFIC CONTROL FOR TRANSITION AREAS

CASE 4



- FLAGGER WITH TRAFFIC CONTROL SIGN
- DRUMS OR BARRICADES WITH LIGHTS
-  WORK AREA

NOTE: STANDARDS 70I30I AND 70I306 SHALL NOT BE USED WITHIN 500 FEET OF THE TRANSITION.

- GENERAL NOTES
- THIS DETAIL IS TO BE USED IN CONJUNCTION WITH THE APPLICABLE MULTILANE TRAFFIC CONTROL AND PROTECTION STANDARD.
- If applicable, Use if shown on applicable multilane Traffic Control and Protection Standard being used.
 - If the work is within 2500 feet of the transition when the speed is > 40 mph, or 1500 feet for all other speeds, the detail shall be used.
 - WORK ZONE SPEED LIMIT 55 SIGN ASSEMBLY shall be replaced with WORK ZONE SPEED LIMIT 45 SIGN ASSEMBLY where the workers are within 500 feet of the transition.

THIS TRAFFIC CONTROL DETAIL SHALL BE INCLUDED IN THE COST OF SPECIFIED TRAFFIC CONTROL STANDARDS OR ITEMS.

FILE NAME : p:\1\dot-pw.bentley.com\PW\DOT\Documents\IDOT Offices\District 2\ORD Projects\Operations\Bridges\Bridges\Bridge Washing Control\REVISED/January 19, 2016/64V09 Bridge Washing over Rock River (5)/CA 64V09 Bridge Washing	USER NAME = David.Doss		DESIGNED - 4-20-17		STATE OF ILLINOIS DEPARTMENT OF TRANSPORTATION	REGION 2 / DISTRICT 2 STANDARD					F.A. RTE.	SECTION		COUNTY	TOTAL SHEETS	SHEET NO.
	DRAWN		REVISED - 8-27-13								VAR.	D2 BC 2026-05		VARIOUS	I5	I5
	PLOT SCALE = \$SCALE\$		CHECKED -			SCALE: SHEET NO. OF SHEETS STA. TO STA.					CONTRACT NO. 64V09					
	PLOT DATE = 9/30/2025		DATE -								FED. ROAD DIST. NO. ILLINOIS FED. AID PROJECT					