

F.A. RTE.	SECTION	COUNTY	TOTAL SHEETS	SHEET NO.
VAR.	D2 BC 2026-04	VARIOUS	10	1
		ILLINOIS	CONTRACT NO. 64V08	

01-16-2026 LETTING ITEM 045

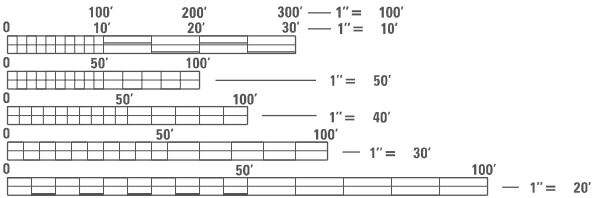
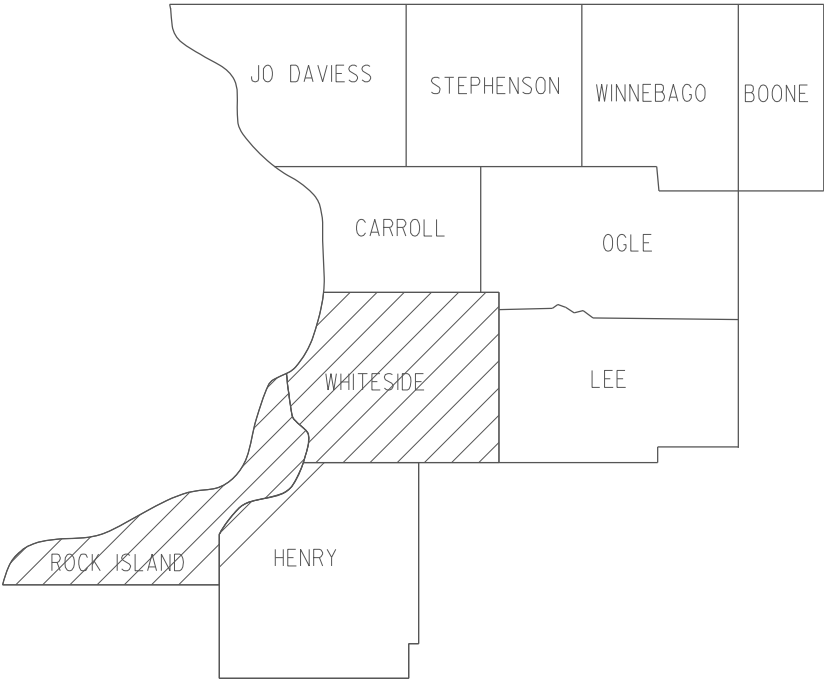
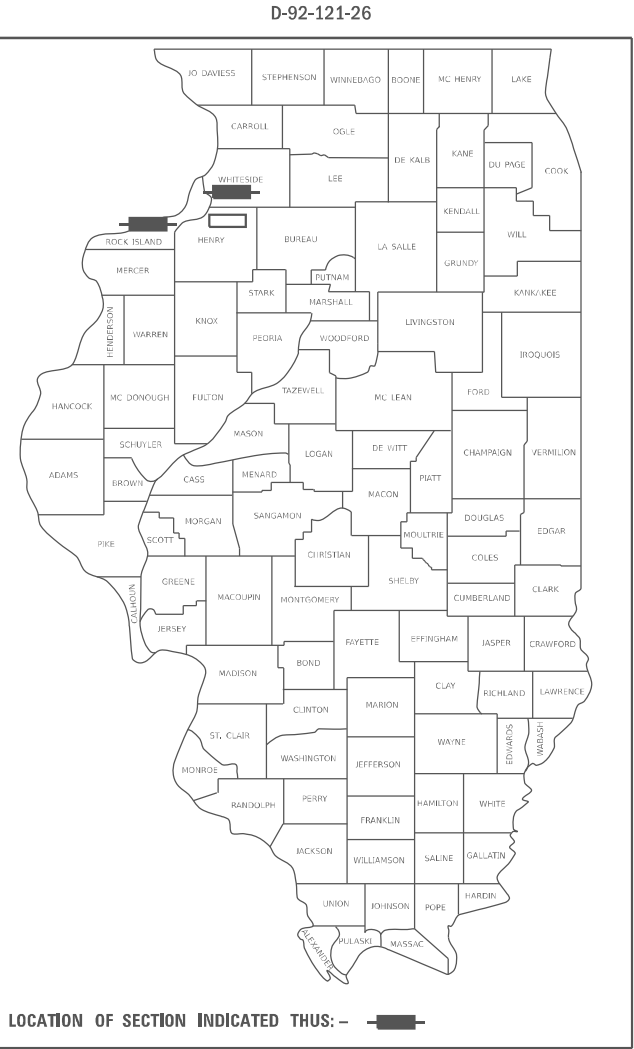
STATE OF ILLINOIS
DEPARTMENT OF TRANSPORTATION

FOR INDEX OF SHEETS, SEE SHEET NO. 2
FOR STATE STANDARDS, SEE SHEET NO. 2

PROPOSED
HIGHWAY PLANS

VARIOUS ROUTES
SECTION: D2 BC 2026-04
PROJECT:
TYPE of IMPROVEMENT: BRIDGE WASHING
VARIOUS COUNTIES

C-92-013-26



FULL SIZE PLANS HAVE BEEN PREPARED USING STANDARD
ENGINEERING SCALES. REDUCED SIZED PLANS WILL NOT
CONFORM TO STANDARD SCALES. IN MAKING MEASUREMENTS
ON REDUCED PLANS, THE ABOVE SCALES MAY BE USED.

J.U.L.I.E.
JOINT UTILITY LOCATION INFORMATION FOR EXCAVATION
1-800-892-0123
OR 811

PROJECT ENGINEER: DAVID DOSS (815) 284-5416
PROJECT MANAGER: DERRICK LOPEZ (815) 284-5398

CONTRACT NO. 64V08

STATE OF ILLINOIS
DEPARTMENT OF TRANSPORTATION

SUBMITTED October 1 20 25

Julia Thompson
REGIONAL ENGINEER

December 5 20 25
Scott A. Etkin
ENGINEER OF DESIGN AND ENVIRONMENT

December 5 20 25
David Doss
DIRECTOR OF HIGHWAYS PROJECT IMPLEMENTATION

PRINTED BY THE AUTHORITY
OF THE STATE OF ILLINOIS

INDEX OF SHEETS

- 1

COVER SHEET
- 2

INDEX OF SHEETS & STATE STANDARDS
- 3

SUMMARY OF QUANTITIES
- 4

SCHEDULE OF QUANTITIES
- 5

LOCATION MAP ROCK ISLAND COUNTY
- 6

LOCATION MAP WHITESIDE COUNTY
- 7–10

DISTRICT STANDARD 38.1

STATE STANDARDS

- 701006–05

OFF–ROAD OPERATIONS, 2L, 2W, 15’(4.5m) TO 24” (600mm) FROM PAVEMENT EDGE
- 701101–05

OFF–ROAD OPERATIONS, MULTILANE, 15’(4.5m) TO 24”(600mm) FROM PAVEMENT EDGE
- 701400–12

APPROACH TO LANE CLOSURE, FREEWAY/EXPRESSWAY
- 701406–13

LANE CLOSURE, FREEWAY/EXPRESSWAY, DAY OPERATIONS ONLY
- 701411–09

LANE CLOSURE, MULTILANE, AT ENTRANCE OR EXIT RAMP, FOR SPEEDS ≥ 45 MPH
- 701501–06

URBAN LANE CLOSURE, 2L, 2W, UNDIVIDED
- 701601–09

URBAN LANE CLOSURE, MULTILANE, 1W OR 2W WITH NONTRAVERSABLE MEDIAN
- 701901–11

TRAFFIC CONTROL DEVICES
- 720011–01

METAL POSTS FOR SIGNS, MARKERS AND DELINEATORS
- 728001–01

TELESCOPING STEEL SIGN SUPPORT
- 729001–01

APPLICATIONS OF TYPES A & B METAL POSTS (FOR SIGNS & MARKERS)
- 701428–01

TRAFFIC CONTROL, SETUP AND REMOVAL, FREEWAY/EXPRESSWAY

MODEL: Default
FILE NAME: pw:///jst-dw-bentley.com/PWD/DOT/Document/IDOT D - es/District 2/ORD Projects/Operations/bridge-dwg-dwg-Section/Bridge-Washing_Contract/2026/January_Letting/64V08-01-cover.dgn

	USER NAME = David.Doss	DESIGNED -	REVISED -	STATE OF ILLINOIS DEPARTMENT OF TRANSPORTATION	INDEX OF SHEETS & STATE STANDARDS				F.A. RTE.	SECTION	COUNTY	TOTAL SHEETS	SHEET NO.
		DRAWN -	REVISED -						VAR.	D2 BC 2026-04	VARIOUS	10	2
	PLOT SCALE = \$SCALE\$	CHECKED -	REVISED -						CONTRACT NO. 64V08				
	PLOT DATE = 9/30/2025	DATE -	REVISED -						SCALE:	SHEET	OF	SHEETS	STA.
								ILLINOIS FED. AID PROJECT					

MODEL: Default
FILE NAME: bw://isot-ew.bentley.com/PW/IDOT/Documents/IDOT District 2/ORD Projects/Operations/Bridge Section/Bridge Washing Contracts/2026/January Letting/6/V08 Bridge Washing over Rock River 6/CADD/6/V08-311-cover.dgn

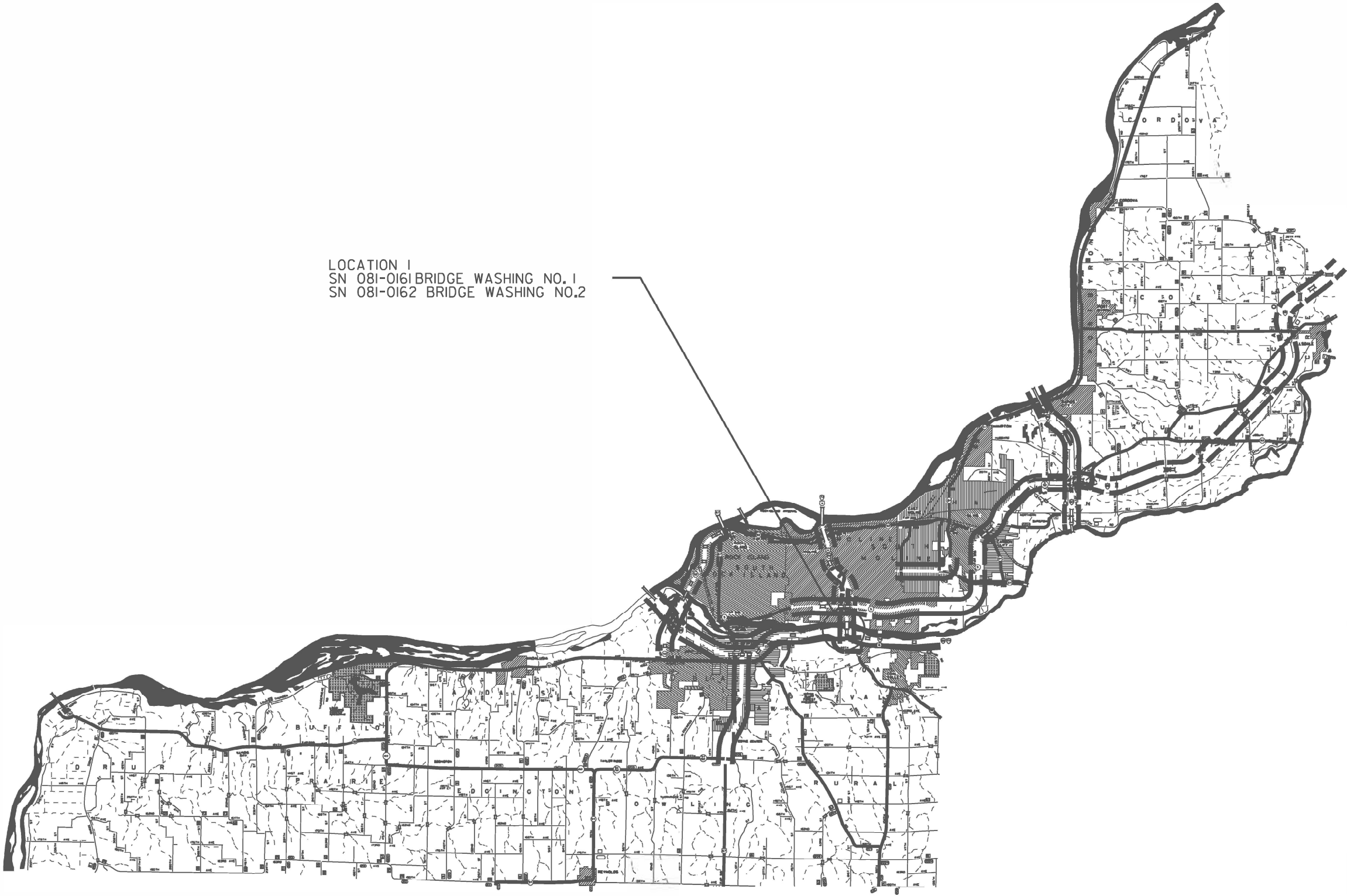
MODEL DRAWING FILE NAME: D2 BC 2026-04	USER NAME = David.Doss	DESIGNED	REVISED	STATE OF ILLINOIS DEPARTMENT OF TRANSPORTATION	SUMMARY OF QUANTITIES				F.A. RTE.	SECTION	COUNTY	TOTAL SHEETS	SHEET NO.
		DRAWN	REVISED						VAR.	D2 BC 2026-04	VARIOUS	10	3
	PLOT SCALE = \$SCALE\$	CHECKED	REVISED		CONTRACT NO. 64V08								
	PLOT DATE = 9/30/2025	DATE	REVISED		SCALE:	SHEET	OF	SHEETS	STA.	TO STA.			
	ILLINOIS FED. AID PROJECT												

SCHEDULE OF QUANTITIES

Pay Item	Project Location	SN	Facility Carried	Feature Crossed	Bridge Location	Tra c Control
BRIDGE WASHING NO. 1	1	081-0161	FAI 74 SB	Rock River / Side Roads	S Edge Moline	701400 , 701406 , 701411 , 701501
BRIDGE WASHING NO. 2		081-0162	FAI 74 NB	Rock River / Side Roads	S Edge Moline	701400 , 701406 , 701411 , 701501
BRIDGE WASHING NO. 3	2	098-0079	FAI 88	Rock River	3 Mi West of Rock Falls	701400 , 701406 , 701411
BRIDGE WASHING NO. 4		098-0080	FAI 88	Rock River	3 Mi West of Rock Falls	701400 , 701406 , 701411

MODEL: Default
FILE NAME: p:\work\new.bentley.com\p\work\documents\DOT 0 eas\District 2\ORD Projects\Operations\Bridges_Section\Bridges_Washing_Contracts\2026\January_letting\64V08-01-cover.dgn

ROCK ISLAND COUNTY



LOCATION 1
SN 081-0161 BRIDGE WASHING NO. 1
SN 081-0162 BRIDGE WASHING NO. 2

MODEL: I:\dss\it
FILE: Map161.dwg
\\dot-cw.bentley.com\h\INDOT\Documents\DOT 0 ccs\District 2\ORD Projects\Operations\Bridge Section\Bridge Washing over Rock River (6)\CADD\64V08-shit-cover.dwg

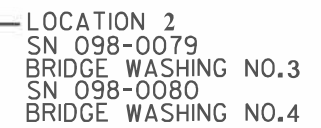
USER NAME	= David.Doss	DESIGNED	-	REVISED	-
		DRAWN	-	REVISED	-
PLOT SCALE	= \$SCALE\$	CHECKED	-	REVISED	-
PLOT DATE	= 9/30/2025	DATE	-	REVISED	-

STATE OF ILLINOIS
DEPARTMENT OF TRANSPORTATION

ROCK ISLAND COUNTY
LOCATION MAP

SCALE: SHEET OF SHEETS STA. TO STA.

F.A. RTE.	SECTION	COUNTY	TOTAL SHEETS	SHEET NO.
VAR.	D2 BC 2026-04	VARIOUS	10	5
CONTRACT NO. 64V08				
ILLINOIS FED. AID PROJECT				

H
A
B
I

F.A. RTE.	SECTION	COUNTY	TOTAL SHEETS	SHEET NO.
VAR.	D2 BC 2026-04	VARIOUS	10	6
		CONTRACT NO. 64V08		
		ILLINOIS	FED. AID PROJECT	

CASE 1

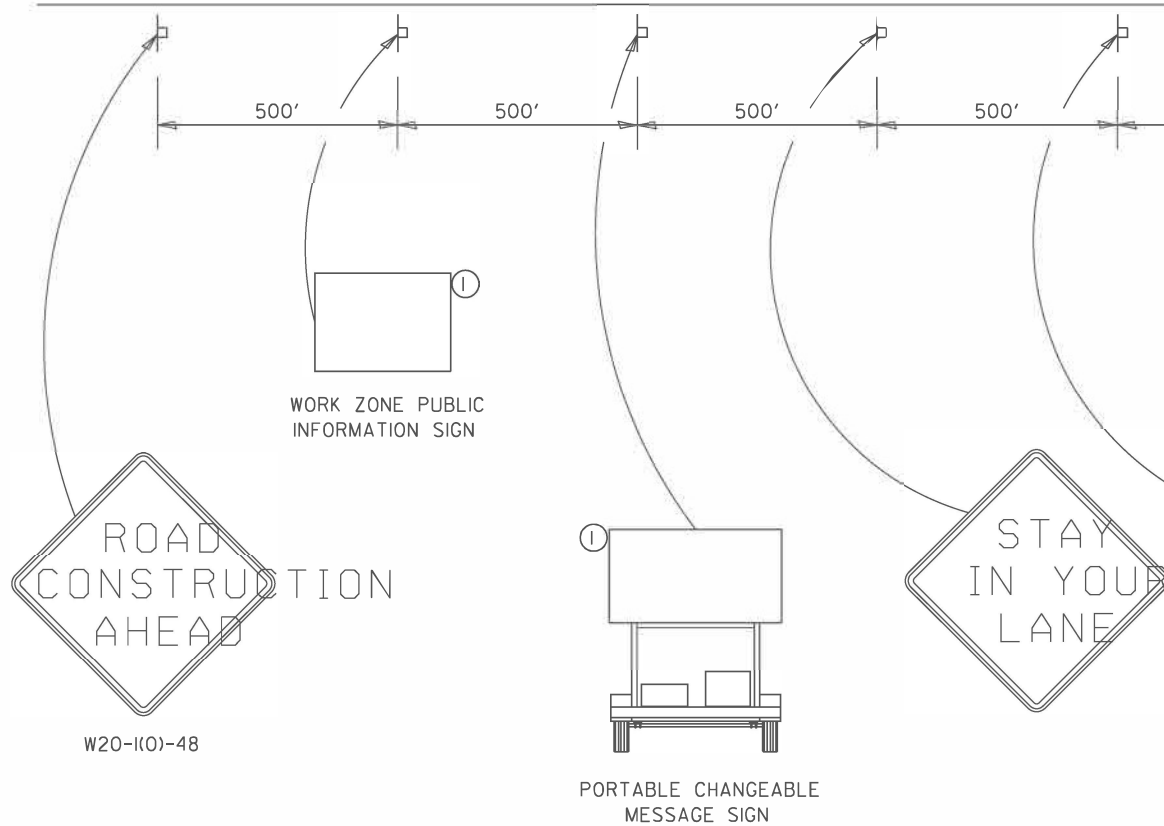


FILE NAME =	USER NAME = David.Doss	DESIGNED -	REVISED - 4-20-17	<div>STATE OF ILLINOIS</div> <div>DEPARTMENT OF TRANSPORTATION</div>	REGION 2 / DISTRICT 2 STANDARD				F.A. RTE.	SECTION	COUNTY	TOTAL SHEETS	SHEET NO.
pw://ildot/pw.bentley.com/PWIDOT/Documents/IDOT Offices/District 2/ORD Projects/Operations/ORD Bridge Section/Bridge Washing Cont	PROJECT = 64V08 Bridge Washing over Rock River (64/CAD) District 2	DATE = 05/06/2016	REVISED -						VAR.	D2 BC 2026-04	VARIOUS	10	7
PLT SCALE = *SCALE*	CHECKED -	REVISED - 8-27-13	REVISED -		CONTRACT NO. 64V08								
PLOT DATE = 9/30/2025	DATE -	REVISED - 1-16-13	REVISED -		SCALE:	SHEET NO. OF	SHEETS	STA. TO STA.	FED. ROAD DIST. NO.	ILLINOIS FED. AID PROJECT			

①

**END
WORK ZONE
SPEED LIMIT**

G20-1103-6036



THIS TRAFFIC CONTROL DETAIL SHALL BE INCLUDED
IN THE COST OF SPECIFIED TRAFFIC CONTROL
STANDARDS OR ITEMS.



WORK AREA

1
3

**WORK
ZONE**

**SPEED
LIMIT**

55

**PHOTO
ENFORCED**

**\$XXX FINE
MINIMUM**

W2-III5(0)-3618

R2-I-3648

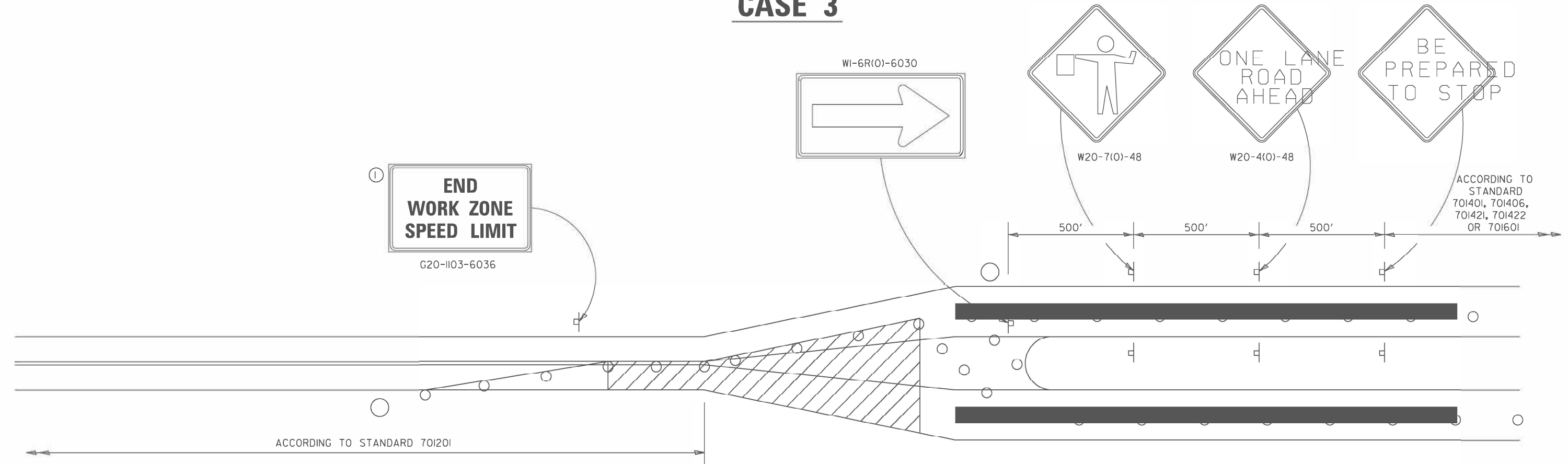
R10-II08p-3618
(only along roadways under
the jurisdiction of the State.)

R2-II06-3618

FILE NAME =	USER NAME = David.Doss	DESIGNED -	REVISED - 4-20-17	<div>STATE OF ILLINOIS</div> <div>DEPARTMENT OF TRANSPORTATION</div>	<div>REGION 2 / DISTRICT 2 STANDARD</div>				F.A. RTE.	SECTION	COUNTY	TOTAL SHEETS	SHEET NO.
pw://ildot/pw.bentley.com/PWIDOT/Documents/IDOT Offices/District 2/ORD Projects/Operations/ORD Bridge Section/Bridge Washing Cont	PROJECT =	REVISED - 05-16-16	REVISED - 05-16-16						VAR.	D2 BC 2026-04	VARIOUS	10	8
PLOT SCALE = *SCALE*	CHECKED -	REVISED - 8-27-13	REVISED - 8-27-13		CONTRACT NO. 64V08								
PLOT DATE = 9/30/2025	DATE -	REVISED - 1-16-13	REVISED - 1-16-13		SCALE:	SHEET NO. OF	SHEETS	STA. TO STA.	FED. ROAD DIST. NO.	ILLINOIS FED. AID PROJECT			

TRAFFIC CONTROL FOR TRANSITION AREAS

CASE 3



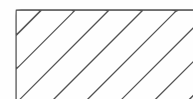
GENERAL NOTES
THIS DETAIL IS TO BE USED IN CONJUNCTION
WITH THE APPLICABLE MULTILANE TRAFFIC
CONTROL AND PROTECTION STANDARD.

1. If applicable, Use If shown on applicable multilane Traffic Control and Protection Standard being used.
2. If the work is within 2500 feet of the transition when the speed is > 40 mph, or 1500 feet for all other speeds, the detail shall be used.
3. WORK ZONE SPEED LIMIT 55 SIGN ASSEMBLY shall be replaced with WORK ZONE SPEED LIMIT 45 SIGN ASSEMBLY where the workers are within 500 feet of the transition.

THIS TRAFFIC CONTROL DETAIL SHALL BE INCLUDED
IN THE COST OF SPECIFIED TRAFFIC CONTROL
STANDARDS OR ITEMS.

○ FLAGGER WITH TRAFFIC CONTROL SIGN

☐ DRUMS OR BARRICADES WITH LIGHTS



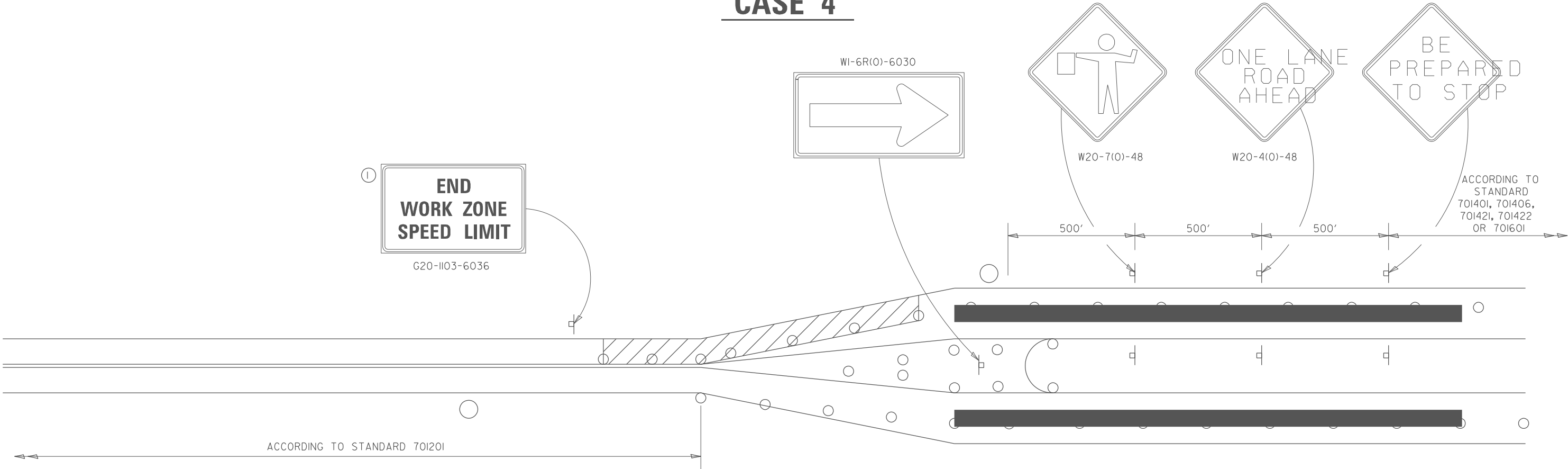
WORK AREA

NOTE: STANDARDS 701301 AND 701306
SHALL NOT BE USED WITHIN 500 FEET
OF THE TRANSITION.

FILE NAME =	USER NAME = David.Doss	DESIGNED =	REVISED = 4-20-17	<div style="text-align: center;"> STATE OF ILLINOIS DEPARTMENT OF TRANSPORTATION </div>	<div style="text-align: center;"> REGION 2 / DISTRICT 2 STANDARD </div>	F.A. RTE.	SECTION	COUNTY	TOTAL SHEETS	SHEET NO.
pw:/ildot/pw.bentley.com/PWIDOT/Documents/	IDOT Offices/District 2/ORD Projects/Operations/	DESIGNED =	REVISED = 1-19-16			VAR.	D2 BC 2026-04	VARIOUS	10	9
		CHECKED =	REVISED = 8-27-13			CONTRACT NO. 64V08				
		DATE =	REVISED = 3-05-12			SCALE:	SHEET NO. OF SHEETS	STA. TO STA.	FED. ROAD DIST. NO.	ILLINOIS FED. AID PROJECT

TRAFFIC CONTROL FOR TRANSITION AREAS

CASE 4



- FLAGGER WITH TRAFFIC CONTROL SIGN
- DRUMS OR BARRICADES WITH LIGHTS
- ▨ WORK AREA

NOTE: STANDARDS 701301 AND 701306 SHALL NOT BE USED WITHIN 500 FEET OF THE TRANSITION.

- GENERAL NOTES
- THIS DETAIL IS TO BE USED IN CONJUNCTION WITH THE APPLICABLE MULTILANE TRAFFIC CONTROL AND PROTECTION STANDARD.
1. If applicable, Use if shown on applicable multilane Traffic Control and Protection Standard being used.
 2. If the work is within 2500 feet of the transition when the speed is > 40 mph, or 1500 feet for all other speeds, the detail shall be used.
 3. WORK ZONE SPEED LIMIT 55 SIGN ASSEMBLY shall be replaced with WORK ZONE SPEED LIMIT 45 SIGN ASSEMBLY where the workers are within 500 feet of the transition.

THIS TRAFFIC CONTROL DETAIL SHALL BE INCLUDED IN THE COST OF SPECIFIED TRAFFIC CONTROL STANDARDS OR ITEMS.

FILE NAME :	USER NAME : David.Doss	DESIGNED :	REVISED : 4-20-17	STATE OF ILLINOIS DEPARTMENT OF TRANSPORTATION	REGION 2 / DISTRICT 2 STANDARD			F.A. RTE.	SECTION	COUNTY	TOTAL SHEETS	SHEET NO.
p:\1\dot-pw.bentley.com\PW\DOT\Documents\IDOT Offices\District 2\ORD Projects\Operations\Bridges\Bridge Section\Bridge Washing Control\REVISED January 19, 2016\64V08 Bridge Washing over Rock River (6)/CA 64V08 Bridge Washing over Rock River (6).dwg	DRAWN	CHECKED :	REVISED : 8-27-13					VAR.	D2 BC 2026-04	VARIOUS	10	10
	PLOT SCALE : #SCALE#	DATE :	REVISED : 3-05-12		SCALE: SHEET NO. OF SHEETS STA. TO STA.			CONTRACT NO. 64V08				
	PLOT DATE : 9/30/2025							FED. ROAD DIST. NO. ILLINOIS FED. AID PROJECT				