

11/07/2025 LETTING ITEM 109

STATE OF ILLINOIS  
DEPARTMENT OF TRANSPORTATION

PLANS FOR PROPOSED  
FEDERAL AID HIGHWAY

MUN ROUTE 0502 (REMINGTON BOULEVARD)

500' EAST OF WEBER ROAD TO 350' SOUTH OF CLAAR BOULEVARD

ROADWAY RESURFACING

SECTION NO.: 25-00080-00-RS

PROJECT NO.: 25AM(770)

VILLAGE OF ROMEOVILLE

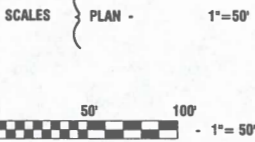
WILL COUNTY

JOB NO.: C-91-181-25

REMINGTON BOULEVARD  
500' EAST OF WEBER ROAD TO 350' SOUTH OF CLAAR BOULEVARD  
2023 ADT- 5,700  
POSTED SPEED LIMIT- 35 MPH  
FUNCTIONAL CLASSIFICATION- MAJOR COLLECTOR

SHEET NO.	SECTION	COUNTY	TOTAL SHEETS	SHEET NO.
0502	25-00080-00-RS	WILL	22	1
STA.		TO STA.		
FED. ROAD DIST. NO. 1		ILLINOIS	FED. AID PROJECT	25AM(770)

CONTRACT NO. 61L81



FULL SIZE PLANS HAVE BEEN PREPARED USING STANDARD  
ENGINEERING SCALES, REDUCED SIZED PLANS WILL NOT  
CONFORM TO STANDARD SCALES, IN MAKING MEASUREMENTS  
ON REDUCED PLANS, THE ABOVE SCALES MAY BE USED.

J. U. L. I. E.  
JOINT UTILITY LOCATION INFORMATION FOR EXCAVATION  
1 - 800 - 892 - 0123  
OR 811

VILLAGE  
OF  
ROMEOVILLE



LOCATION MAP  
NOT TO SCALE

GROSS AND NET LENGTH= 3798 FEET= 0.72 MILES



WILLIAM P. DOLAN  
REGISTERED  
PROFESSIONAL  
ENGINEER  
STATE OF ILLINOIS  
LICENSE EXPIRES: 11/30/25  
Will P. Dolan  
07-24-25

STATE OF ILLINOIS DEPARTMENT OF TRANSPORTATION	
APPROVED	
PASSED	
RELEASING FOR BID BASED ON LIMITED REVIEW	

PRINTED BY THE AUTHORITY OF  
THE STATE OF ILLINOIS

FEDERAL AID PROGRAM ENGINEER: CARMEN RAMOS, PE, SCHAUMBURG, IL  
CONSULTANTS: ROBINSON ENGINEERING, LTD. 708-331-6700

CONTRACT NO. 61L81

INDEX OF SHEETS

1	COVER SHEET
2	INDEX OF SHEETS, HIGHWAY STANDARDS AND GENERAL NOTES
3-5	SUMMARY OF QUANTITIES
6	TYPICAL CROSS SECTION
7-8	ALIGNMENT AND TIES PLAN
9-11	PROPOSED IMPROVEMENT PLAN
12-14	PAVEMENT MARKING PLANS
15-22	IDOT DISTRICT ONE DETAILS

HIGHWAY STANDARDS

000001-08	STANDARD SYMBOLS, ABBREVIATIONS AND PATTERNS
280001-07	TEMPORARY EROSION CONTROL SYSTEMS
442201-03	CLASS C AND D PATCHES
606001-08	CONCRETE CURB TYPE B AND COMBINATION CONCRETE CURB AND GUTTER
701001-02	OFF ROAD OPERATIONS, 2L, 2W, MORE THAN 15'(4.5m) AWAY
701006-05	OFF ROAD OPERATIONS, 2L, 2W, 15'(4.5m) TO 24"(600mm) FROM PAVEMENT EDGE
701011-04	OFF ROAD MOVING OPERATIONS, 2L,2W, DAY ONLY
701301-04	LANE CLOSURE, 2L, 2W, SHORT TIME OPERATIONS
701311-03	LANE CLOSURE, 2L, 2W, MOVING OPERATIONS - DAY ONLY
701501-06	URBAN LANE CLOSURE, 2L, 2W, UNDIVIDED
701502-09	URBAN LANE CLOSURE, 2L, 2W, WITH BIDIRECTIONAL LEFT TURN LANE
701701-10	URBAN LANE CLOSURE MULTILANE INTERSECTION
701901-10	TRAFFIC CONTROL DEVICES
780001-05	TYPICAL PAVEMENT MARKINGS
814001-03	HANDHOLES

DISTRICT ONE DETAILS

BD-08	FRAMES AND LIDS ADJUSTMENT WITH MILLING
BD-22	PAVEMENT PATCHING FOR HMA SURFACED PAVEMENT
BD-32	BUTT JOINTS AND HMA TAPER
TC-10	TRAFFIC CONTROL AND PROTECTION FOR SIDE ROADS, INTERSECTIONS AND DRIVEWAYS
TC-13	DISTRICT ONE TYPICAL PAVEMENT MARKINGS
TC-16	SHORT TERM PAVEMENT MARKING LETTERS AND SYMBOLS
TC-22	ARTERIAL ROAD INFORMATION SIGN
TC-26	DRIVEWAY ENTRANCE SIGNING

GENERAL NOTES

- ITEMS OF WORK LISTED IN THE SUMMARY OF QUANTITIES NOT SPECIFICALLY CALLED OUT ON THE PLANS SHALL BE PERFORMED AS DIRECTED BY THE ENGINEER.
- THE ROBINSON ENGINEERING, LTD. FIELD OFFICE (708-331-6700), AND THE PUBLIC WORKS DIRECTOR (815-886-1870), AT THE VILLAGE ROMEOVILLE, SHALL BE NOTIFIED TWO (2) WORKING DAYS BEFORE CONSTRUCTION BEGINS.
- BEFORE STARTING ANY EXCAVATION THE CONTRACTOR SHALL CALL "J.U.L.I.E." AT (800) 892-0123 OR 811 AND (312) 744-7000 FOR FIELD LOCATIONS OF BURIED ELECTRIC, TELEPHONE, GAS AND OTHER UTILITIES. (48 HOUR NOTIFICATION REQUIRED)
- IT SHALL BE THE CONTRACTOR'S RESPONSIBILITY TO VERIFY ALL DIMENSIONS AND CONDITIONS EXISTING IN THE FIELD PRIOR TO CONSTRUCTION AND ORDERING OF MATERIALS.
- THE THICKNESS OF HMA MIXTURE STATED IN THE SPECIFICATIONS IS THE NOMINAL THICKNESS. DEVIATIONS FROM THE NOMINAL THICKNESS WILL BE PERMITTED WHEN SUCH DEVIATIONS OCCUR DUE TO IRREGULARITIES IN THE EXISTING SURFACE OR BASE ON WHICH THE HMA SURFACE IS PLACED.
- ANY LOOSE MATERIAL DEPOSITED IN THE FLOW LINE OF DITCHES, GUTTERS OR OTHER DRAINAGE STRUCTURES SHALL BE REMOVED BY THE END OF EACH DAY BY THE CONTRACTOR.
- CLASS D PATCHING QUANTITIES FOR THIS CONTRACT SHALL BE PERFORMED AT THE DIRECTION OF THE ENGINEER AFTER PAVEMENT MILLING.
- CONTRACTOR SHALL TAKE PRECAUTION BY PRESERVING EXISTING TREES WITHIN THE RIGHT OF WAY. IF ANY DAMAGE OCCURS, TREES SHALL BE REPLACED IN KIND PER ARTICLE 201.07 REPAIR OR REPLACEMENT OF EXISTING PLANT MATERIAL REQUIREMENTS STATED HEREIN.
- NO PAVEMENT PATCHING SHALL BE PERMITTED AFTER FRIDAY AT 3:00 PM OF EACH AND EVERY WEEK AND NO HOLES WILL BE ALLOWED TO REMAIN OPEN OVERNIGHT OR OVER THE WEEKEND.
- ALL EQUIPMENT SHALL BE REMOVED OFF THE VILLAGE STREETS DURING ALL HOLIDAY WEEKENDS AS COORDINATED WITH THE VILLAGE.
- HMA PAVING SHALL BE PERFORMED WITH HOT JOINTS.
- ALL SIGNS REMOVED THAT ARE NOT BEING REINSTALLED ARE THE PROPERTY OF THE VILLAGE AND SHALL BE DELIVERED TO THE VILLAGE OF ROMEOVILLE PUBLIC WORKS DEPARTMENT AT 615 ANDERSON DRIVE, ROMEOVILLE, IL 60446.
- ALL EXCAVATED SOIL SHALL BE KEPT ON SITE AND USED AS BACKFILL OR TOPSOIL.

COMMITTMENTS

NONE

FILE NAME = 23R0761-INDX-01 - P01	USER NAME =	DESIGNED — WD	REVISED —	STATE OF ILLINOIS DEPARTMENT OF TRANSPORTATION	REMINGTON BOULEVARD ROADWAY RESURFACING INDEX OF SHEETS, STATE STANDARDS AND GENERAL NOTES			MUN RTE.	SECTION	COUNTY	TOTAL SHEETS	SHEET NO.
		CHECKED — WPD	REVISED —					0502	25-00080-00-RS	WILL	22	2
	PLOT SCALE =	DRAWN — RG	REVISED —					CONTRACT NO. 61L81				
	PLOT DATE = 07-24-25	CHECKED — AG	REVISED —		SCALE: NONE	SHEET NO. 2	OF 22 SHEETS	STA.	TO STA.	FED. ROAD DIST. NO. 1	ILLINOIS	FED. AID PROJECT 25AM(770)

				FED 80%	FED 80%
				VILLAGE 20%	VILLAGE 20%
				ROADWAY	SAFETY
				CONSTRUCTION TYPE CODE	
CODE NO.	PAY ITEM	UNIT	TOTAL QUANTITY	0005	0021
21101615	TOPSOIL FURNISH AND PLACE, 4"	SQ YD	415	415	
25000110	SEEDING, CLASS 1A	ACRE	0.25	0.25	
25000400	NITROGEN FERTILIZER NUTRIENT	POUND	25	25	
25000500	PHOSPHORUS FERTILIZER NUTRIENT	POUND	25	25	
25000600	POTASSIUM FERTILIZER NUTRIENT	POUND	25	25	
25100630	EROSION CONTROL BLANKET	SQ YD	415	415	
28000510	INLET FILTERS	EACH	37	37	
40201000	AGGREGATE FOR TEMPORARY ACCESS	TON	180	180	
40600290	BITUMINOUS MATERIALS (TACK COAT)	POUND	10,565	10,565	
40600370	LONGITUDINAL JOINT SEALANT	FOOT	4,185	4,185	
40600400	MIXTURE FOR CRACKS, JOINTS, AND FLANGEWAYS	TON	20	20	
40600982	HOT-MIX ASPHALT SURFACE REMOVAL - BUTT JOINT	SQ YD	75	75	
40603085	HOT-MIX ASPHALT BINDER COURSE, IL-19.0, N70	TON	1,975	1,975	
40604062	HOT-MIX ASPHALT SURFACE COURSE, IL-9.5, MIX "D", N70	TON	1,755	1,755	
42300200	PORTLAND CEMENT CONCRETE DRIVEWAY PAVEMENT, 6 INCH	SQ YD	200	200	
44000165	HOT-MIX ASPHALT SURFACE REMOVAL, 4"	SQ YD	15,655	15,655	

\* SPECIALTY ITEM

FILE NAME - 23R0761-QUAN-01 - 001	USER NAME -	DESIGNED - WD	REVISED -	STATE OF ILLINOIS DEPARTMENT OF TRANSPORTATION	REMINGTON BOULEVARD ROADWAY RESURFACING SUMMARY OF QUANTITIES			MUN RTE.	SECTION	COUNTY	TOTAL SHEETS	SHEET NO.
		CHECKED - JDH	REVISED -					0502	25-00080-00-RS	WILL	22	3
	PLOT SCALE -	DRAWN - BG	REVISED -					CONTRACT NO. 61L81				
	PLOT DATE - 07-24-25	CHECKED - ACAD	REVISED -					FED. ROAD DIST. NO. 1 ILLINOIS FED. AID PROJECT 25AM(770)				
SCALE:		SHEET NO. 3 OF 22 SHEETS		STA.		TO STA.						

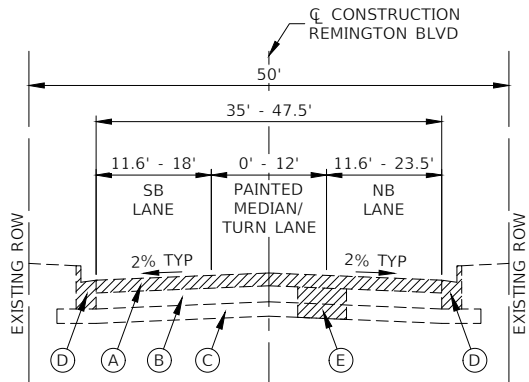
				FED 80%	FED 80%
				VILLAGE 20%	VILLAGE 20%
				ROADWAY	SAFETY
CODE NO.	PAY ITEM	UNIT	TOTAL QUANTITY	CONSTRUCTION TYPE CODE	
				0005	0021
44000200	DRIVEWAY PAVEMENT REMOVAL	SQ YD	200	200	
44000500	COMBINATION CURB AND GUTTER REMOVAL	FOOT	1,855	1,855	
44201761	CLASS D PATCHES, TYPE I, 10 INCH	SQ YD	5	5	
44201765	CLASS D PATCHES, TYPE II, 10 INCH	SQ YD	5	5	
44201769	CLASS D PATCHES, TYPE III, 10 INCH	SQ YD	15	15	
44201771	CLASS D PATCHES, TYPE IV, 10 INCH	SQ YD	100	100	
60603800	COMBINATION CONCRETE CURB AND GUTTER, TYPE B-6.12	FOOT	1,855	1,855	
67100100	MOBILIZATION	L SUM	1	1	
70102620	TRAFFIC CONTROL AND PROTECTION, STANDARD 701501	L SUM	1	1	
70102622	TRAFFIC CONTROL AND PROTECTION, STANDARD 701502	L SUM	1	1	
70102635	TRAFFIC CONTROL AND PROTECTION, STANDARD 701701	L SUM	1	1	
70107025	CHANGEABLE MESSAGE SIGN	CAL DA	35	35	
70300100	SHORT TERM PAVEMENT MARKING	FOOT	2,370		2,370
70300150	SHORT TERM PAVEMENT MARKING REMOVAL	SQ FT	790		790
* 78000100	THERMOPLASTIC PAVEMENT MARKING - LETTERS AND SYMBOLS	SQ FT	430		430
* 78000200	THERMOPLASTIC PAVEMENT MARKING - LINE 4"	FOOT	9,555		9,555

\* SPECIALTY ITEM

FILE NAME = 23R0761-QUAN-01 - Q02	USER NAME =	DESIGNED — WD	REVISED —	STATE OF ILLINOIS DEPARTMENT OF TRANSPORTATION	REMINGTON BOULEVARD ROADWAY RESURFACING SUMMARY OF QUANTITIES		MUN RTE.	SECTION	COUNTY	TOTAL SHEETS	SHEET NO.
		CHECKED — JDH	REVISED —				0502	25-00080-00-RS	WILL	22	4
	PLOT SCALE =	DRAWN — BG	REVISED —				CONTRACT NO. 61LB1				
	PLOT DATE = 07-24-25	CHECKED — ACAD	REVISED —				FED. ROAD DIST. NO. 1	ILLINOIS	FED. AID PROJECT 25AM(770)		
				SCALE:		SHEET NO. 4	OF 22	SHEETS	STA.	TO STA.	

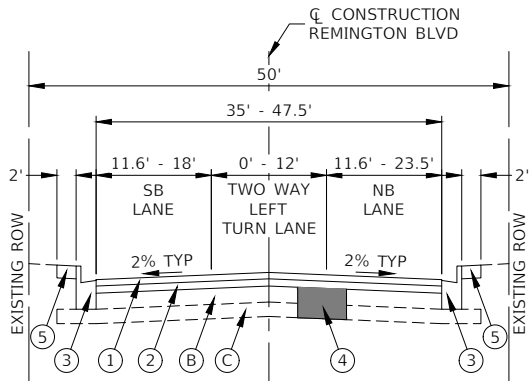
				FED 80%	FED 80%
				VILLAGE 20%	VILLAGE 20%
				ROADWAY	SAFETY
CODE NO.	PAY ITEM	UNIT	TOTAL QUANTITY	CONSTRUCTION TYPE CODE	
				0005	0021
* 78000400	THERMOPLASTIC PAVEMENT MARKING - LINE 6"	FOOT	375		375
* 78000600	THERMOPLASTIC PAVEMENT MARKING - LINE 12"	FOOT	255		255
* 78000650	THERMOPLASTIC PAVEMENT MARKING - LINE 24"	FOOT	25		25
X6026050	SANITARY MANHOLES TO BE ADJUSTED	EACH	2	2	
X6030310	FRAMES AND LIDS TO BE ADJUSTED (SPECIAL)	EACH	4	4	
X7200061	TEMPORARY INFORMATION SIGNING	SQ FT	100		100
Z0017400	DRAINAGE & UTILITY STRUCTURES TO BE ADJUSTED	EACH	35	35	
Z0017700	DRAINAGE & UTILITY STRUCTURES TO BE RECONSTRUCTED	EACH	1	1	

\* SPECIALTY ITEM



### EXISTING TYPICAL SECTION

STA 06+61.11 TO STA 44+58.82



### PROPOSED TYPICAL SECTION

STA 06+61.11 TO STA 44+58.82

### NOTE

1. FROM STA 06+61.11 TO APPROXIMATELY STA 13+36, THE ROADWAY HAS ONLY 18' WIDE SOUTHBOUND AND NORTHBOUND LANES, NO PAINTED MEDIAN OR TURN LANE
2. FROM APPROXIMATELY STA 26+63 TO APPROXIMATELY STA 32+76, THE TOTAL ROADWAY WIDTH REDUCES TO 35'.
3. FROM APPROXIMATELY STA 32+76 TO STA 36+00, THE ROADWAY TAPERS OUT TO A WIDTH OF 47.5' BEFORE RETURNING TO TYPICAL WIDTH AT APPROXIMATELY STA 36+52.

### EXISTING LEGEND

- (A) HOT-MIX ASPHALT SURFACE REMOVAL, 4"
- (B) EXISTING HOT-MIX ASPHALT PAVEMENT, 6"-10" TO REMAIN
- (C) AGGREGATE SUBGRADE, 5"-7"
- (D) EXISTING COMBINATION CONCRETE CURB AND GUTTER, TYPE B-6.12 (TO BE REMOVED AS DIRECTED BY THE ENGINEER)
- (E) PAVEMENT REMOVAL FOR CLASS D PATCHES, 10 INCH (TO BE REMOVED AS DIRECTED BY THE ENGINEER)
- ////// ITEMS TO BE REMOVED AS DIRECTED BY THE ENGINEER

### NOTE

1. LONGITUDINAL JOINT SEALANT SHALL BE PLACED ON THE HOT-MIX ASPHALT BINDER COURSE
2. ALL PATCHING OPERATIONS SHALL TAKE PLACE AFTER SURFACE MILLING HAS BEEN COMPLETED.

### PROPOSED LEGEND

- (1) HOT-MIX ASPHALT SURFACE COURSE, IL-9.5, MIX "D", N70, 2"
- (2) HOT-MIX ASPHALT BINDER COURSE, IL-19.0, N70, 2.25"
- (3) COMBINATION CONCRETE CURB AND GUTTER, TYPE B-6.12 (AS DIRECTED BY THE ENGINEER)
- (4) CLASS D PATCHES, 10 INCH (AS DIRECTED BY THE ENGINEER)
- (5) TOPSOIL, FURNISH AND PLACE, 4", SEEDING, CLASS 1A

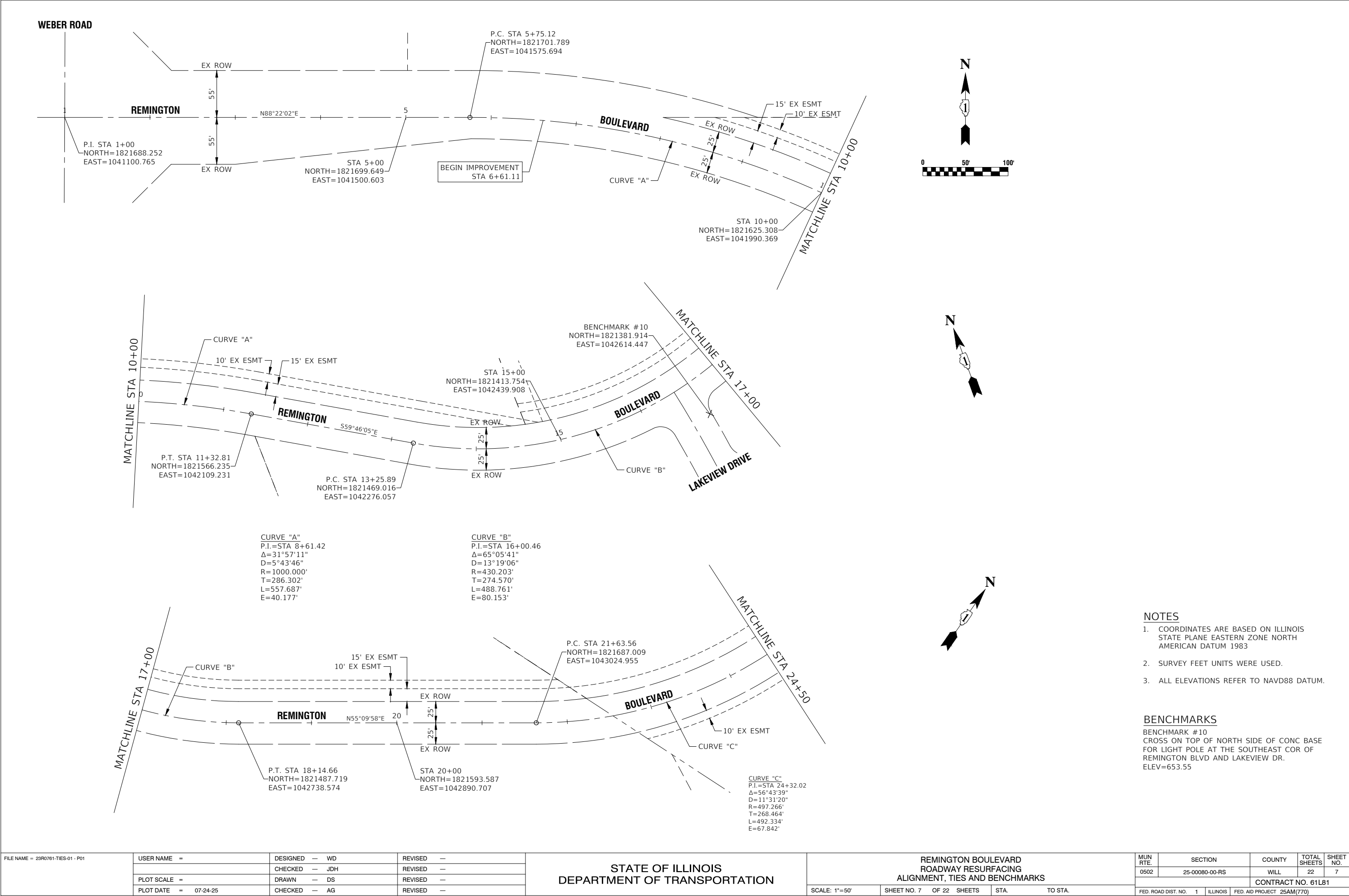
### HOT-MIX ASPHALT MIXTURE REQUIREMENTS

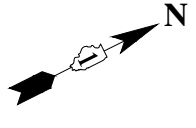
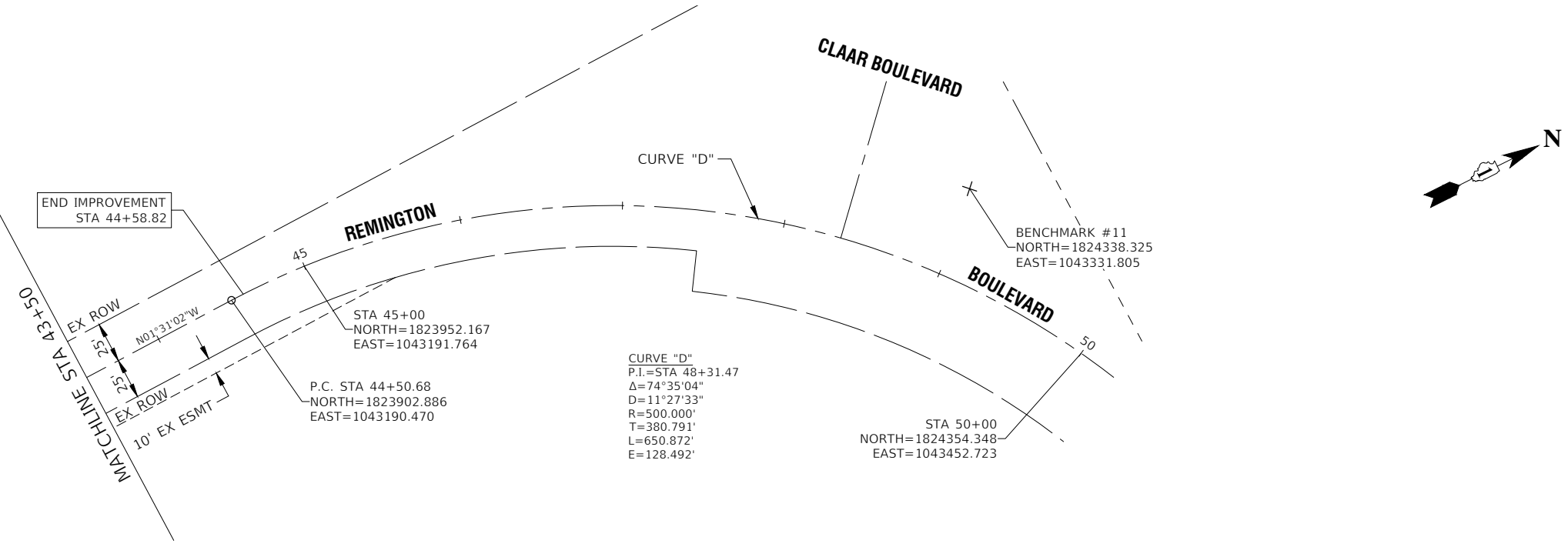
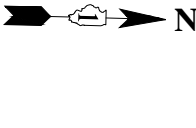
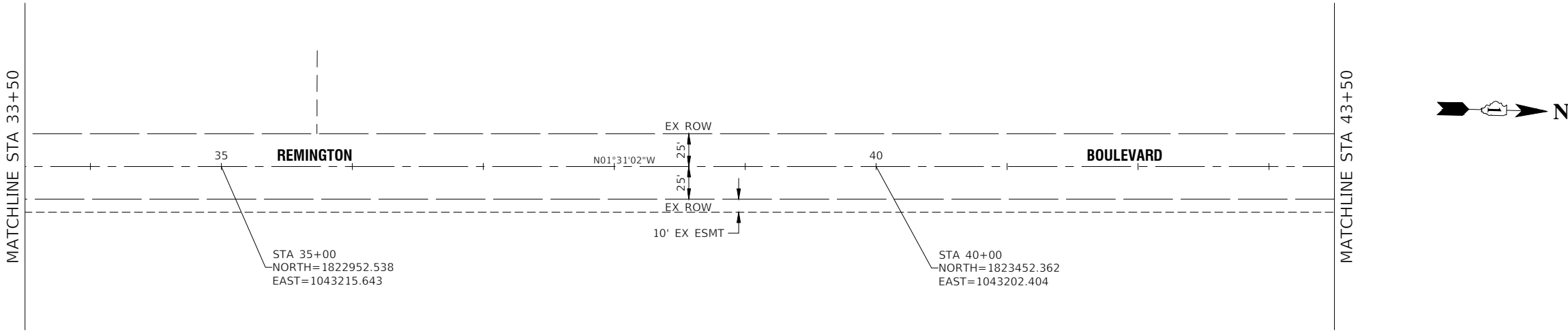
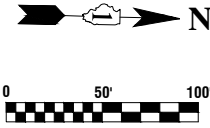
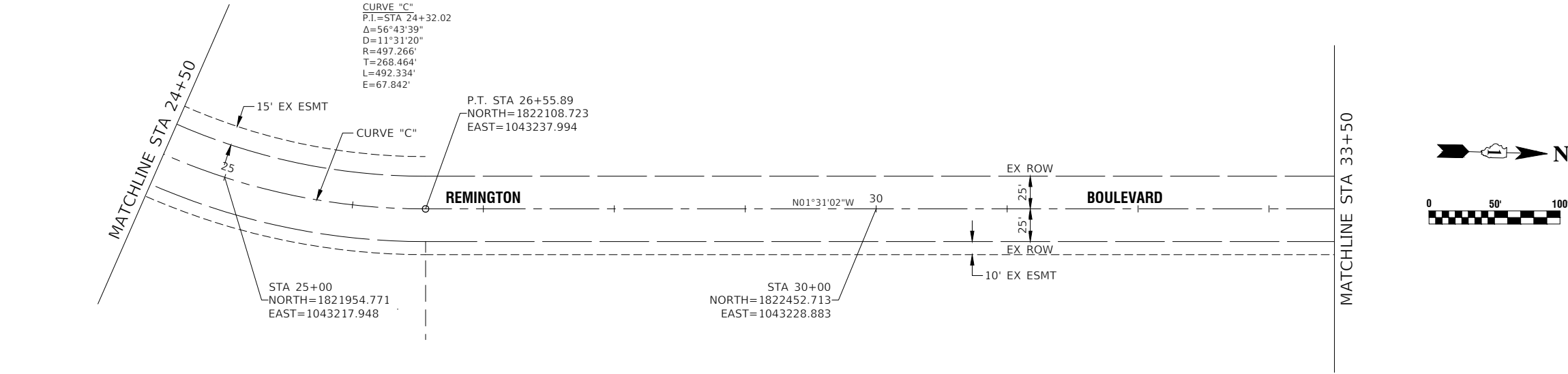
MIXTURE TYPE	AIR VOIDS @ Ndes	QMP
ROADWAY RESURFACING		
HOT-MIX ASPHALT SURFACE COURSE, IL-9.5, MIX "D", N70, 2"	4% @ 70 Gyr.	LR 1030-2
HOT-MIX ASPHALT BINDER COURSE, IL-19.0, N70, 2.25"	4% @ 70 Gyr.	LR 1030-2
PATCHING		
CLASS D PATCHES (HMA BINDER IL-19mm), 10 INCH	4% @ 70 Gyr.	LR 1030-2
QMP DESIGNATION: QUALITY CONTROL/QUALITY ASSURANCE (QC/QA) PER LR1030-2		

#### NOTE:

1. THE UNIT WEIGHT USED TO CALCULATE ALL HMA SURFACE MIXTURES IS 112 LBS/SQ/IN.
2. THE "AC TYPE" FOR POLYMERIZED HMA MIXES SHALL BE "SBS/SBR PG 76-22" AND FOR NON-POLYMERIZED HMA THE "AC TYPE" SHALL BE "PG-64-22" UNLESS MODIFIED BY RECLAIMED MATERIALS SPECIFICATIONS.

FILE NAME = 23R0761-TYPX-01 - P01	USER NAME =	DESIGNED — WD	REVISED —	STATE OF ILLINOIS DEPARTMENT OF TRANSPORTATION	REMINGTON BOULEVARD ROADWAY RESURFACING TYPICAL CROSS SECTIONS			MUN RTE.	SECTION	COUNTY	TOTAL SHEETS	SHEET NO.
		CHECKED — JDH	REVISED —					0502	25-00080-00-RS	WILL	22	6
	PLOT SCALE =	DRAWN — BG	REVISED —					CONTRACT NO. 61L81				
	PLOT DATE = 07-24-25	CHECKED — AG	REVISED —					FED. ROAD DIST. NO. 1 ILLINOIS FED. AID PROJECT 25AM(770)				
SCALE:		SHEET NO. 6 OF 21 SHEETS		STA.		TO STA.						





- NOTES**
- COORDINATES ARE BASED ON ILLINOIS STATE PLANE EASTERN ZONE NORTH AMERICAN DATUM 1983
  - SURVEY FEET UNITS WERE USED.
  - ALL ELEVATIONS REFER TO NAVD88 DATUM.

**BENCHMARKS**  
BENCHMARK #11  
CROSS ON TOP OF SOUTH SIDE OF CONC BASE FOR LIGHT POLE AT THE NORTHWEST COR OF REMINGTON BLVD AND CLAAR BLVD.  
ELEV=674.11

FILE NAME = 23R0761-TIES-01 - P02	USER NAME =	DESIGNED — WD	REVISED —	STATE OF ILLINOIS DEPARTMENT OF TRANSPORTATION	REMINGTON BOULEVARD ROADWAY RESURFACING ALIGNMENT, TIES AND BENCHMARKS					MUN RTE.	SECTION	COUNTY	TOTAL SHEETS	SHEET NO.
		CHECKED — JDH	REVISED —							0502	25-00080-00-RS	WILL	22	8
	PLOT SCALE =	DRAWN — DS	REVISED —							CONTRACT NO. 61L81				
	PLOT DATE = 07-24-25	CHECKED — AG	REVISED —											
				SCALE: 1"=50'	SHEET NO. 8	OF 22 SHEETS	STA.	TO STA.	FED. ROAD DIST. NO. 1 ILLINOIS FED. AID PROJECT 25AM(770)					

WEBER ROAD

REMINGTON

BOULEVARD

MATCHLINE STA 10+00

BEGIN IMPROVEMENT  
STA 6+61.11

N

MATCHLINE STA 10+00


REMINGTON


BOULEVARD


LAKEVIEW DRIVE


MATCHLINE STA 17+00

LEGEND

- 


HOT-MIX ASPHALT SURFACE REMOVAL, 4"  
HOT-MIX ASPHALT BINDER COURSE, IL-19.0, N70, 2 1/4"  
HOT-MIX ASPHALT SURFACE COURSE, IL-9.5, MIX "D", N70, 2"
- 

CLASS D PATCHES, 10 INCH  
REMOVAL AND DISPOSAL OF UNSUITABLE MATERIAL (AS DIRECTED BY ENGINEER)  
AGGREGATE SUBGRADE IMPROVEMENT (AS DIRECTED BY ENGINEER)
- 

DRIVEWAY PAVEMENT REMOVAL  
PORTLAND CEMENT CONCRETE DRIVEWAY PAVEMENT, 6"
- 

COMBINATION CURB AND GUTTER REMOVAL  
COMBINATION CONCRETE CURB AND GUTTER, TYPE B-6.12
- "A"

DRAINAGE & UTILITY STRUCTURES TO BE ADJUSTED  
FRAMES AND LIDS TO BE ADJUSTED (SPECIAL)
- "R"

DRAINAGE & UTILITY STRUCTURES TO BE RECONSTRUCTED
- 

HMA SURFACE REMOVAL - BUTT JOINT
- BEG R&R +XX

BEGIN STATION FOR CURB AND GUTTER REMOVAL AND REPLACEMENT
- END R&R +XX

END STATION OF CURB AND GUTTER REMOVAL AND REPLACEMENT
- CL R&R +XX

CENTER STATION OF CURB AND GUTTER REMOVAL AND REPLACEMENT (UNDER 20 LINEAL FEET)

NOTES:

ANY TOPSOIL EXCAVATED DURING CURB AND GUTTER REMOVAL AND REPLACEMENT FROM STATION 16+00 TO 16+50 SHALL BE STOCKPILED ON-SITE AND RE-USED AS FILL IN THE RESTORATION AREAS. THIS WORK SHALL BE INCLUDED IN THE COST OF THE VARIOUS CONTRACT PAY ITEMS.

FILE NAME = 23R0761-PLAN-01 - P01

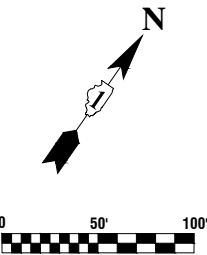
USER NAME	=	DESIGNED	—	WD	REVISED	—
		CHECKED	—	JDH	REVISED	—
PLOT SCALE	=	DRAWN	—	DS	REVISED	—
PLOT DATE	=	CHECKED	—	AG	REVISED	—

STATE OF ILLINOIS  
DEPARTMENT OF TRANSPORTATION

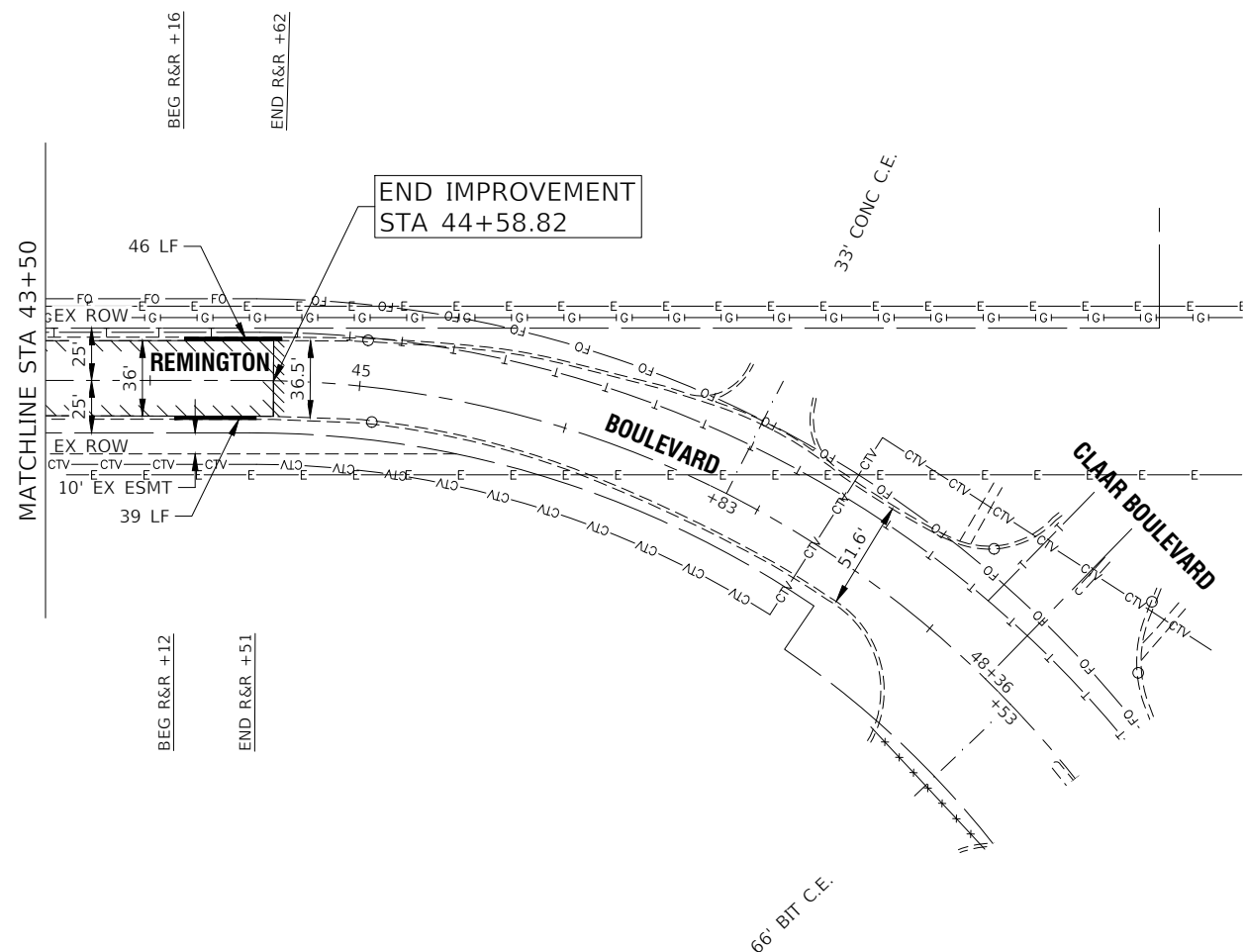
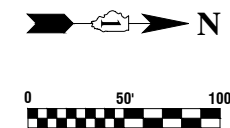
REMINGTON BOULEVARD  
ROADWAY RESURFACING  
PROPOSED IMPROVEMENT PLAN

SCALE: 1"=50' SHEET NO. 9 OF 22 SHEETS STA. TO STA.

MUN RTE.	SECTION	COUNTY	TOTAL SHEETS	SHEET NO.
0502	25-00080-00-RS	WILL	22	9
CONTRACT NO. 61L81				
FED. ROAD DIST. NO. 1	ILLINOIS	FED. AID PROJECT 25AM(770)		

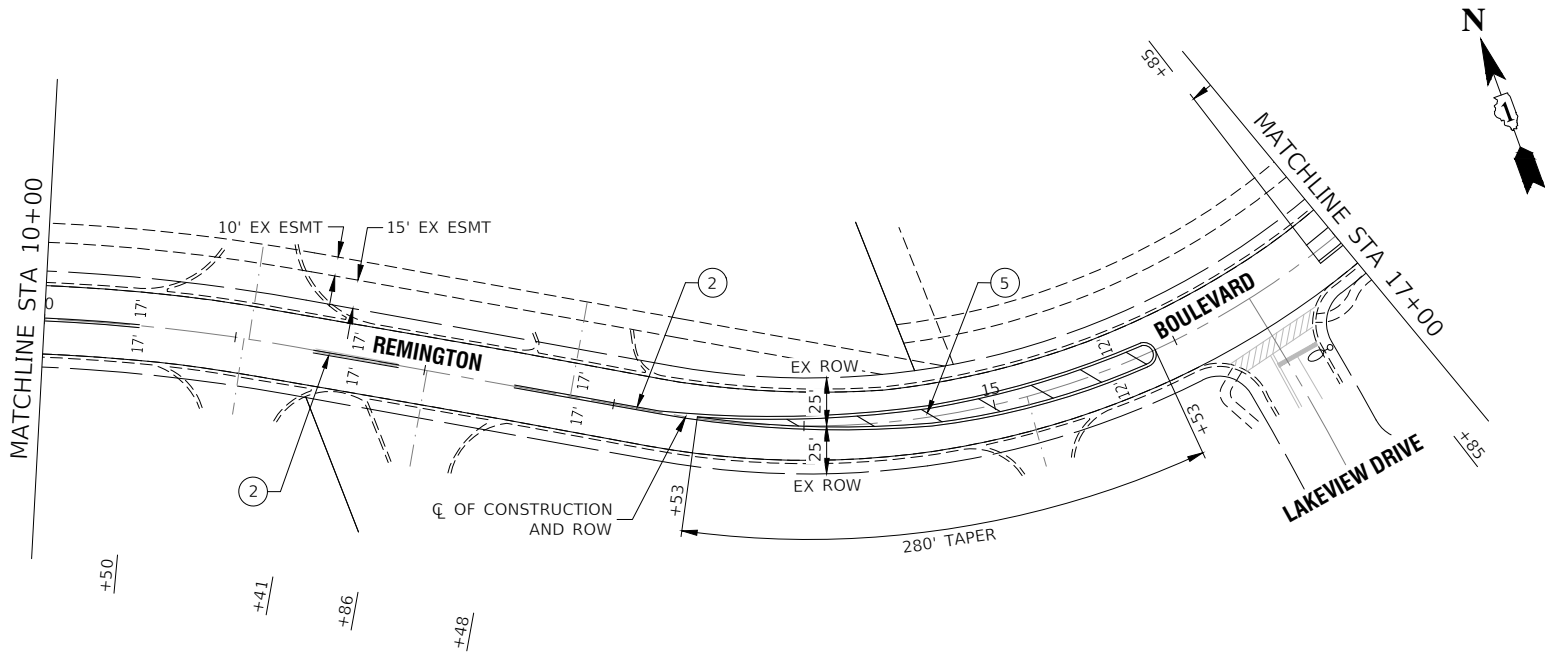
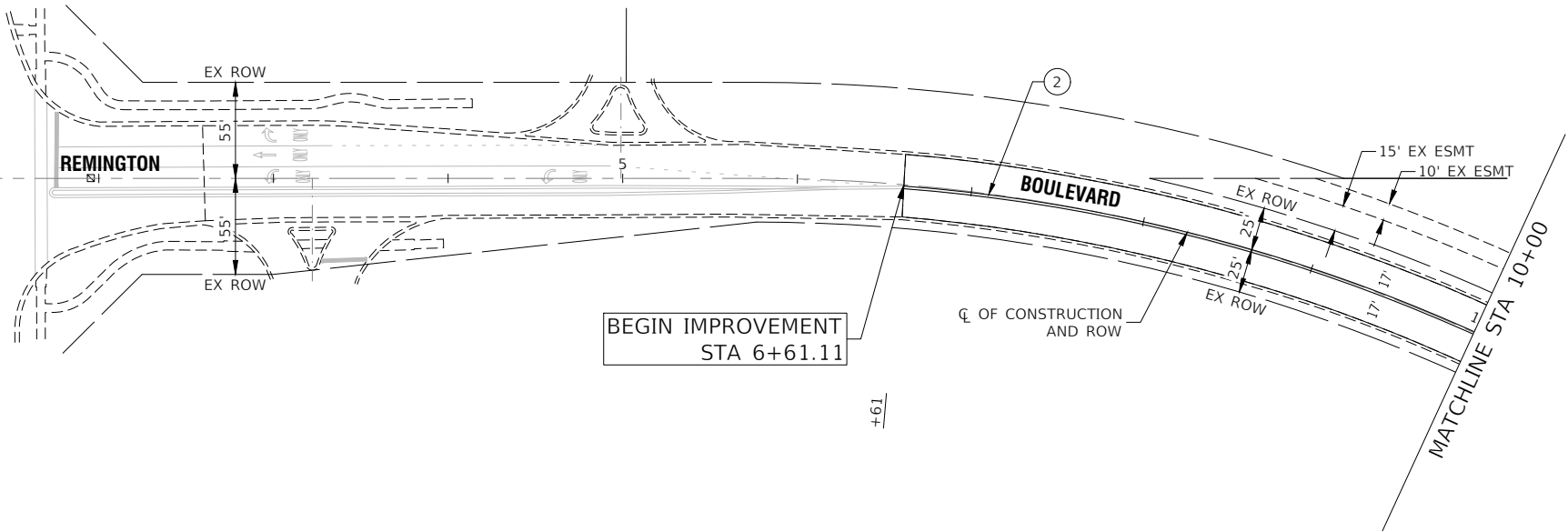


FILE NAME = 23R0761-PLAN-01 - P02	USER NAME =	DESIGNED -- WD	REVISED --	STATE OF ILLINOIS DEPARTMENT OF TRANSPORTATION	REMINGTON BOULEVARD ROADWAY RESURFACING PROPOSED IMPROVEMENT PLAN					MUN RTE.	SECTION	COUNTY	TOTAL SHEETS	SHEET NO.
		CHECKED -- JDH	REVISED --							0502	25-00080-00-RS	WILL.	22	10
	PLOT SCALE =	DRAWN -- DS	REVISED --		CONTRACT NO. 61L81									
	PLOT DATE = 07-24-25	CHECKED -- AG	REVISED --		SCALE: 1"=50'	SHEET NO. 10 OF 22 SHEETS	STA. TO STA.	FED. ROAD DIST. NO. 1	ILLINOIS	FED. AID PROJECT 25AM(770)				



FILE NAME = 23R0761-PLAN-01 - P03	USER NAME =	DESIGNED — WD	REVISED —	STATE OF ILLINOIS DEPARTMENT OF TRANSPORTATION	REMINGTON BOULEVARD ROADWAY RESURFACING PROPOSED IMPROVEMENT PLAN			MUN RTE.	SECTION	COUNTY	TOTAL SHEETS	SHEET NO.
		CHECKED — JDH	REVISED —					0502	25-00080-00-RS	WILL	22	11
	PLOT SCALE =	DRAWN — DS	REVISED —		CONTRACT NO. 61L81							
	PLOT DATE = 07-24-25	CHECKED — AG	REVISED —		SCALE: 1"=50'	SHEET NO. 11 OF 22 SHEETS	STA. TO STA.	FED. ROAD DIST. NO. 1 ILLINOIS	FED. AID PROJECT 25AM(770)			

WEBER ROAD



### PAVEMENT MARKING LEGEND

- ① THERMOPLASTIC PAVEMENT MARKING - WHITE LETTERS & SYMBOLS
- ② THERMOPLASTIC PAVEMENT MARKING - LINE 4" DOUBLE YELLOW LINE (11" C-C)
- ③ THERMOPLASTIC PAVEMENT MARKING - LINE 6" WHITE LANE LINE
- ④ THERMOPLASTIC PAVEMENT MARKING - LINE 24" WHITE STOP BAR LINE
- ⑤ THERMOPLASTIC PAVEMENT MARKING - LINE 12" YELLOW DIAGONAL LINE (45° ANGLE, 20' C-C)
- ⑥ THERMOPLASTIC PAVEMENT MARKING - LINE 4" YELLOW SKIP DASH (10' LINE-30' SPACE)
- ⑦ THERMOPLASTIC PAVEMENT MARKING - LINE 6" WHITE SKIP DASH (2' LINE-6' SPACE)
- ⑧ THERMOPLASTIC PAVEMENT MARKING - LINE 4" YELLOW LANE LINE
- ⑨ THERMOPLASTIC PAVEMENT MARKING - LINE 4" WHITE LANE LINE

### NOTES

1. SEE TC-13 DISTRICT ONE TYPICAL PAVEMENT MARKING FOR GUIDANCE.
2. ALL PAVEMENT MARKINGS SHALL BE THERMOPLASTIC UNLESS OTHERWISE SHOWN.

FILE NAME = 23R0761-PVMK-01 - P01

USER NAME =	DESIGNED — WD	REVISED —
	CHECKED — JDH	REVISED —
PLOT SCALE =	DRAWN — DS	REVISED —
PLOT DATE = 07-24-25	CHECKED — AG	REVISED —

STATE OF ILLINOIS  
DEPARTMENT OF TRANSPORTATION

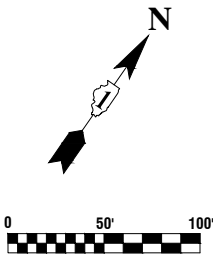
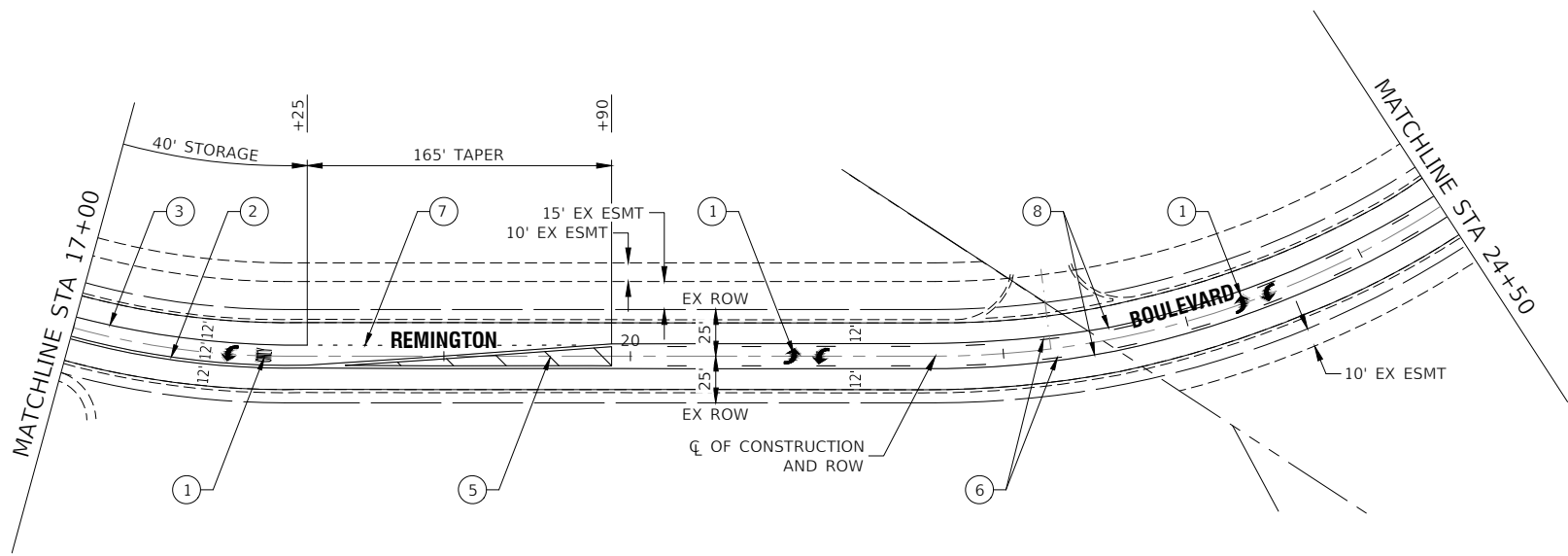
REMINGTON BOULEVARD  
ROADWAY RESURFACING  
PAVEMENT MARKING & SIGNING

SCALE: 1"=50'

SHEET NO. 12 OF 22 SHEETS

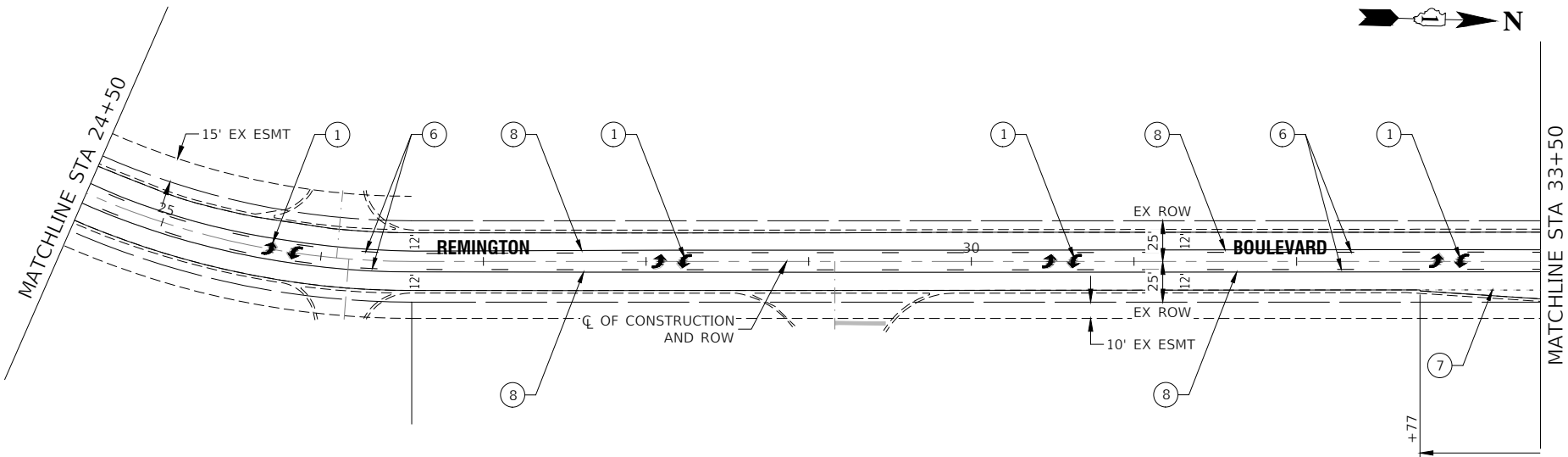
STA. TO STA.

MUN RTE.	SECTION	COUNTY	TOTAL SHEETS	SHEET NO.
0502	25-00080-00-RS	WILL	22	12
CONTRACT NO. 61L81				
FED. ROAD DIST. NO. 1	ILLINOIS	FED. AID PROJECT 25AM(770)		



PAVEMENT MARKING LEGEND

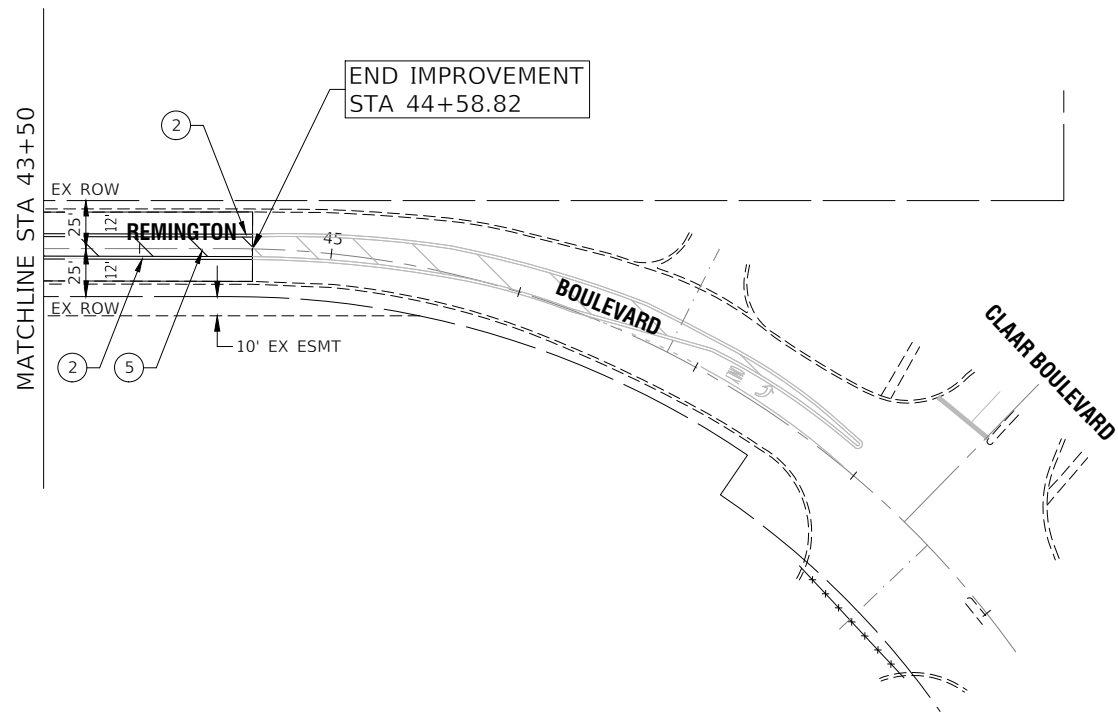
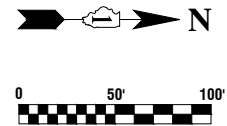
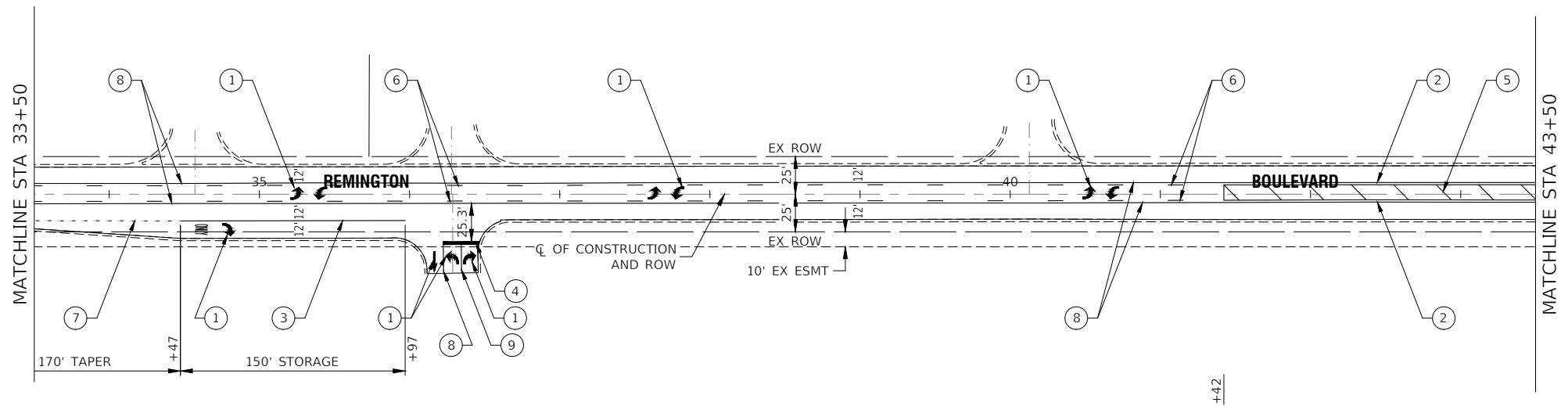
- ① THERMOPLASTIC PAVEMENT MARKING - WHITE LETTERS & SYMBOLS
- ② THERMOPLASTIC PAVEMENT MARKING - LINE 4" DOUBLE YELLOW LINE (11" C-C)
- ③ THERMOPLASTIC PAVEMENT MARKING - LINE 6" WHITE LANE LINE
- ④ THERMOPLASTIC PAVEMENT MARKING - LINE 24" WHITE STOP BAR LINE
- ⑤ THERMOPLASTIC PAVEMENT MARKING - LINE 12" YELLOW DIAGONAL LINE (45° ANGLE, 20' C-C)
- ⑥ THERMOPLASTIC PAVEMENT MARKING - LINE 4" YELLOW SKIP DASH (10' LINE-30' SPACE)
- ⑦ THERMOPLASTIC PAVEMENT MARKING - LINE 6" WHITE SKIP DASH (2' LINE-6' SPACE)
- ⑧ THERMOPLASTIC PAVEMENT MARKING - LINE 4" YELLOW LANE LINE
- ⑨ THERMOPLASTIC PAVEMENT MARKING - LINE 4" WHITE LANE LINE



NOTES

- 1. SEE TC-13 DISTRICT ONE TYPICAL PAVEMENT MARKING FOR GUIDANCE.
- 2. ALL PAVEMENT MARKINGS SHALL BE THERMOPLASTIC UNLESS OTHERWISE SHOWN.

FILE NAME = 23R0761-PVMK-01 - P02	USER NAME =		DESIGNED — WD	REVISED —	STATE OF ILLINOIS DEPARTMENT OF TRANSPORTATION	REMINGTON BOULEVARD ROADWAY RESURFACING PAVEMENT MARKING & SIGNING					MUN RTE.	SECTION	COUNTY	TOTAL SHEETS	SHEET NO.
			CHECKED — JDH	REVISED —							0502	25-00080-00-RS	WILL	22	13
	PLOT SCALE =		DRAWN — DS	REVISED —							CONTRACT NO. 61L81				
	PLOT DATE = 07-24-25		CHECKED — AG	REVISED —		SCALE: 1"=50'	SHEET NO. 13 OF 22 SHEETS		STA. TO STA.		FED. ROAD DIST. NO. 1		ILLINOIS	FED. AID PROJECT 25AM(770)	



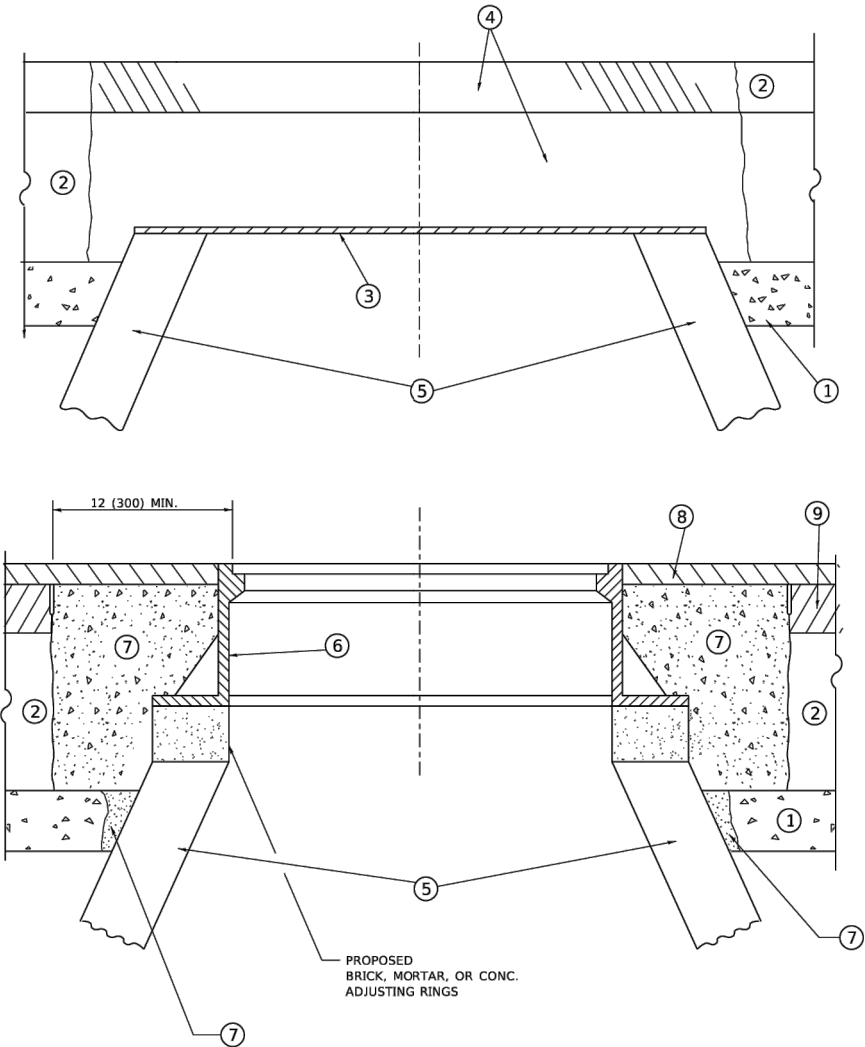
PAVEMENT MARKING LEGEND

- ① THERMOPLASTIC PAVEMENT MARKING - WHITE LETTERS & SYMBOLS
- ② THERMOPLASTIC PAVEMENT MARKING - LINE 4" DOUBLE YELLOW LINE (11" C-C)
- ③ THERMOPLASTIC PAVEMENT MARKING - LINE 6" WHITE LANE LINE
- ④ THERMOPLASTIC PAVEMENT MARKING - LINE 24" WHITE STOP BAR LINE
- ⑤ THERMOPLASTIC PAVEMENT MARKING - LINE 12" YELLOW DIAGONAL LINE (45° ANGLE, 20' C-C)
- ⑥ THERMOPLASTIC PAVEMENT MARKING - LINE 4" YELLOW SKIP DASH (10' LINE-30' SPACE)
- ⑦ THERMOPLASTIC PAVEMENT MARKING - LINE 6" WHITE SKIP DASH (2' LINE-6' SPACE)
- ⑧ THERMOPLASTIC PAVEMENT MARKING - LINE 4" YELLOW LANE LINE
- ⑨ THERMOPLASTIC PAVEMENT MARKING - LINE 4" WHITE LANE LINE

NOTES

- 1. SEE TC-13 DISTRICT ONE TYPICAL PAVEMENT MARKING FOR GUIDANCE.
- 2. ALL PAVEMENT MARKINGS SHALL BE THERMOPLASTIC UNLESS OTHERWISE SHOWN.

FILE NAME = 23R0761-PVMK-01 - P03	USER NAME =		DESIGNED — WD	REVISED —	STATE OF ILLINOIS DEPARTMENT OF TRANSPORTATION	REMINGTON BOULEVARD ROADWAY RESURFACING PAVEMENT MARKING & SIGNING				MUN RTE.	SECTION	COUNTY	TOTAL SHEETS	SHEET NO.	
			CHECKED — JDH	REVISED —						0502	25-00080-00-RS	WILL	22	14	
	PLOT SCALE =		DRAWN — DS	REVISED —						CONTRACT NO. 61L81					
	PLOT DATE = 07-24-25		CHECKED — AG	REVISED —		SCALE: 1"=50'		SHEET NO. 14	OF 22 SHEETS	STA.	TO STA.		FED. ROAD DIST. NO. 1	ILLINOIS	FED. AID PROJECT 25AM(770)



**DETAILS FOR FRAMES AND LIDS ADJUSTMENT  
WITH MILLING**

**NOTES**

- EXISTING BROKEN FRAMES AND LIDS SHALL BE REMOVED AND DISPOSED OF BY THE CONTRACTOR AND SHALL BE REPLACED AS DIRECTED BY THE ENGINEER. REPLACEMENT FRAMES AND LIDS WILL BE PAID FOR IN ACCORDANCE WITH ARTICLE 109.04 OF THE STANDARD SPECIFICATIONS UNLESS A SEPARATE PAY ITEM HAS BEEN PROVIDED.
- IF THE EXISTING LIDS ARE OPEN, THE FRAME WILL BE ADJUSTED TO THE ELEVATION OF THE MILLED PAVEMENT SURFACE PRIOR TO THE MILLING OPERATION. THE FRAME WILL NOT BE REMOVED AND COVERED BY THE METAL PLATE.
- CITY OF CHICAGO CASTINGS ARE THE PROPERTY OF THE CITY AND THE CONTRACTOR SHALL NOTIFY THE CITY FOR REMOVAL AND DISPOSITION OF THE CASTINGS.
- THE METAL PLATE USED TO COVER THE STRUCTURE SHALL REMAIN THE PROPERTY OF THE CONTRACTOR.
- THE CONTRACTOR SHALL REMOVE ALL TRAFFIC CONTROL DEVICES BY THE END OF EACH WORK SHIFT.

**CONSTRUCTION PROCEDURES**

**STAGE 1 (BEFORE PAVEMENT MILLING)**

- REMOVE A MINIMUM OF 12 (300) OF THE PAVEMENT FROM AROUND THE STRUCTURE.
- REMOVE THE EXISTING FRAME AND LID FROM THE STRUCTURE.
- COVER THE STRUCTURE OPENING WITH A 36 (900) DIAMETER METAL PLATE.
- BACKFILL WITH CRUSHED STONE AND HMA SURFACE MIX APPROVED BY THE ENGINEER. (MIN. 3 (80) HMA TO REMAIN AFTER MILLING).

**STAGE 2 (AFTER PAVEMENT MILLING)**

- REMOVE THE HMA SURFACE MIX AND CRUSHED STONE.
- INSTALL THE FRAME AND LID; ADJUST THE FRAME TO ITS FINAL SURFACE ELEVATION.
- THE SURROUNDING SPACE SHALL BE FILLED WITH CLASS PP-2\* CONCRETE TO THE ELEVATION OF THE SURFACE OF THE EXISTING BASE COURSE OR THE BINDER COURSE.

\*UNLESS OTHERWISE SPECIFIED IN THE PLANS.

THE PROCEDURE EXPLAINED ABOVE SHALL CONFORM TO THE APPLICABLE PORTIONS OF SECTIONS 353, 406, 602, AND 603 OF THE STANDARD SPECIFICATIONS EXCEPT THAT "THE CONTRACTOR SHALL ADJUST THE STRUCTURES TO THE FINISHED PAVEMENT ELEVATION NO MORE THAN 5 CALENDAR DAYS PRIOR TO PLACEMENT OF THE FINAL LIFT OF SURFACE UNLESS APPROVED BY THE ENGINEER."

**LEGEND**

- |  |                               |
|--|-------------------------------|
| ① SUB-BASE GRANULAR MATERIAL                 | ⑥ FRAME AND LID (SEE NOTES)   |
| ② EXISTING PAVEMENT                          | ⑦ CLASS PP-2* CONCRETE        |
| ③ 36 (900) DIAMETER METAL PLATE              | ⑧ PROPOSED HMA SURFACE COURSE |
| ④ PROPOSED CRUSHED STONE AND HMA SURFACE MIX | ⑨ PROPOSED HMA BINDER COURSE  |
| ⑤ EXISTING STRUCTURE                         |                               |

**LOCATION OF STRUCTURES**

THE CONTRACTOR WILL BE REQUIRED TO KEEP A RECORD OF THE LOCATIONS OF THE BURIED STRUCTURES ACCORDING TO THE STATION AND DISTANCE LEFT OR RIGHT OF THE CENTERLINE OF PAVEMENT. UPON COMPLETION OF THE WORK, THE CONTRACTOR WILL DELIVER THE RECORD TO THE ENGINEER.

**BASIS OF PAYMENT**

- REMOVING FRAMES AND LIDS ON DRAINAGE AND UTILITY STRUCTURES IN THE PAVEMENT PRIOR TO MILLING, AND ADJUSTING TO FINAL GRADE PRIOR TO PLACING THE SURFACE COURSE, WILL BE PAID FOR AT THE CONTRACT UNIT PRICE EACH FOR "FRAMES AND LIDS TO BE ADJUSTED (SPECIAL)."
- THIS WORK WILL NOT BE PAID FOR WHEN DRAINAGE AND UTILITY STRUCTURES ARE SPECIFIED FOR PAYMENT AS STRUCTURE RECONSTRUCTION.
- NEW FRAMES AND LIDS, WHEN SPECIFIED, WILL BE PAID FOR SEPARATELY.
- WHEN STRUCTURES ARE TO BE ADJUSTED OR RECONSTRUCTED, THE LOWERING AND RAISING OF THE FRAMES AND LIDS WILL NOT BE PAID FOR SEPARATELY BUT WILL BE INCLUDED IN THE COST OF THE CORRESPONDING PAY ITEM.

ALL DIMENSIONS ARE IN INCHES (MILLIMETERS) UNLESS OTHERWISE SHOWN

	USER NAME = Lawrence.DeManche	DESIGNED - R. SHAH	REVISED - R. BORO 03-09-11	STATE OF ILLINOIS DEPARTMENT OF TRANSPORTATION	DETAILS FOR FRAMES AND LIDS ADJUSTMENT WITH MILLING			F.A. RTE.	SECTION	COUNTY	TOTAL SHEETS	SHEET NO.
	PLOT SCALE = 100.0000 ' / in.	CHECKED -	REVISED - R. BORO 12-06-11					BD600-03 (BD-08)		CONTRACT NO.		
	PLOT DATE = 9/13/2023	DATE - 10-25-94	REVISED - K. SMITH 11-18-22		SCALE: NONE	SHEET 1	OF 1 SHEETS	STA.	TO STA.		ILLINOIS FED. AID PROJECT	

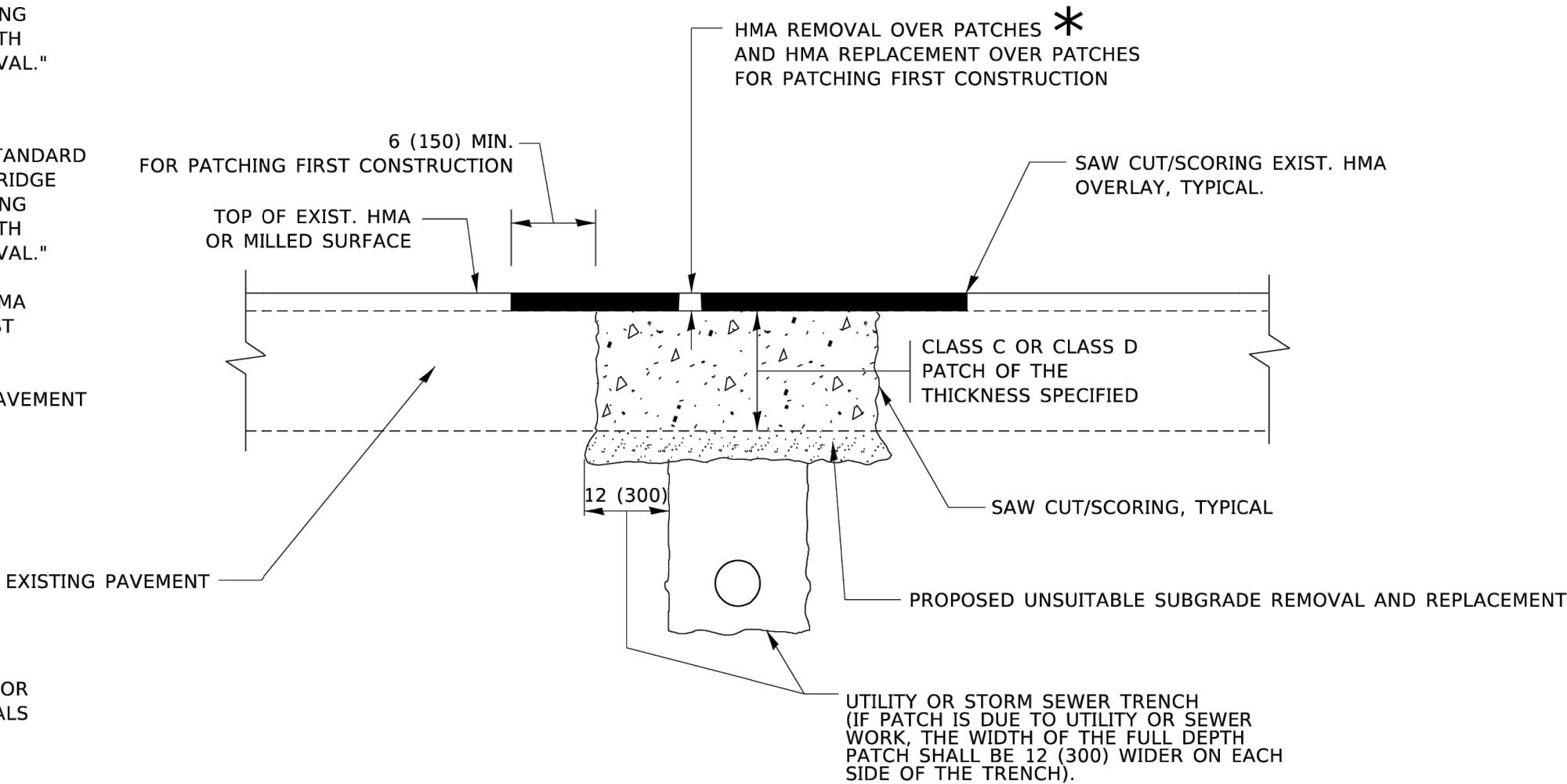
FILE NAME = 23R0761-DTLS-01 - BD08	USER NAME =	DESIGNED --	REVISED --	STATE OF ILLINOIS DEPARTMENT OF TRANSPORTATION	IDOT DISTRICT ONE STANDARDS			MUN RTE.	SECTION	COUNTY	TOTAL SHEETS	SHEET NO.
		CHECKED --	REVISED --					0502	25-00080-00-RS	WILL	22	15
	PLOT SCALE =	DRAWN --	REVISED --					CONTRACT NO. 61L81				
	PLOT DATE =	CHECKED --	REVISED --		SCALE:	SHEET NO. 15	OF 21 SHEETS	STA.	TO STA.		FED. ROAD DIST. NO. 1 ILLINOIS FED. AID PROJECT 25AM(770)	

METHOD OF MEASUREMENT

REFER TO SECTION 442 OF THE STANDARD SPECIFICATIONS FOR ROAD AND BRIDGE CONSTRUCTION AND THE RECURRING SPECIAL PROVISION "PATCHING WITH HOT-MIX ASPHALT OVERLAY REMOVAL."

BASIS OF PAYMENT

- 1. REFER TO SECTION 442 OF THE STANDARD SPECIFICATIONS FOR ROAD AND BRIDGE CONSTRUCTION AND THE RECURRING SPECIAL PROVISION "PATCHING WITH HOT-MIX ASPHALT OVERLAY REMOVAL."
- 2. SAW CUT/SCORING OF EXISTING HMA OVERLAY IS INCLUDED IN THE COST OF PAVEMENT PATCHING.
- 3. SAW CUT/SCORING OF EXISTING PAVEMENT IS INCLUDED IN THE COST OF PAVEMENT PATCHING.



\* SEE TYPICAL SECTIONS FOR  
THICKNESS AND MATERIALS

SEQUENCE OF CONSTRUCTION (PATCHING FIRST)

- 1. REMOVE THE EXISTING HMA MATERIAL OVER THE AREA TO BE PATCHED.
- 2. REMOVE AND REPLACE WITH CLASS C OR D PATCH.
- 3. REPLACE HMA MATERIAL OVER THE AREA TO BE PATCHED.

SEQUENCE OF CONSTRUCTION (MILLING FIRST)

- 1. MILL HMA FIRST IF THERE IS AT LEAST 4½ INCHES OR MORE OF HMA MATERIAL ON TOP OF THE EXISTING PAVEMENT OR IF THE PAVEMENT IS FULL DEPTH HMA. A MINIMUM OF 2 INCHES OF HMA MATERIAL SHALL BE IN PLACE AFTER MILLING.
- 2. REMOVE AND REPLACE WITH FULL DEPTH CLASS D PATCHES TO TOP OF MILLED SURFACE.

ALL DIMENSIONS ARE IN INCHES (MILLIMETERS) UNLESS OTHERWISE SHOWN.

	USER NAME = Lawrence.DeManche	DESIGNED - R. SHAH	REVISED - R. BORO 01-01-07	STATE OF ILLINOIS DEPARTMENT OF TRANSPORTATION	PAVEMENT PATCHING FOR HMA SURFACED PAVEMENT			F.A. RTE.	SECTION	COUNTY	TOTAL SHEETS	SHEET NO.	
		DRAWN -	REVISED - R. BORO 09-04-07										
	PLOT SCALE = 100.0000 ' / in.	CHECKED -	REVISED - K. ENG 10-27-08										
	PLOT DATE = 11/18/2022	DATE - 10-25-94	REVISED - K. SMITH 11-18-22										
					SCALE: NONE	SHEET 1	OF 1	SHEETS	STA.	TO STA.	BD400-04 (BD-22)		CONTRACT NO.
				ILLINOIS FED. AID PROJECT									

FILE NAME = 23R0761-DTSL-01 - BD22	USER NAME =	DESIGNED —	REVISED —	STATE OF ILLINOIS DEPARTMENT OF TRANSPORTATION	IDOT DISTRICT ONE STANDARDS					MUN RTE.	SECTION		COUNTY	TOTAL SHEETS	SHEET NO.
		CHECKED —	REVISED —												
	PLOT SCALE =	DRAWN —	REVISED —							0502	25-00080-00-RS		WILL	22	16
	PLOT DATE =	CHECKED —	REVISED —		CONTRACT NO. 61L81										
						SCALE:	SHEET NO. 16	OF 21	SHEETS	STA.	TO STA.	FED. ROAD DIST. NO. 1	ILLINOIS	FED. AID PROJECT	25AM(770)



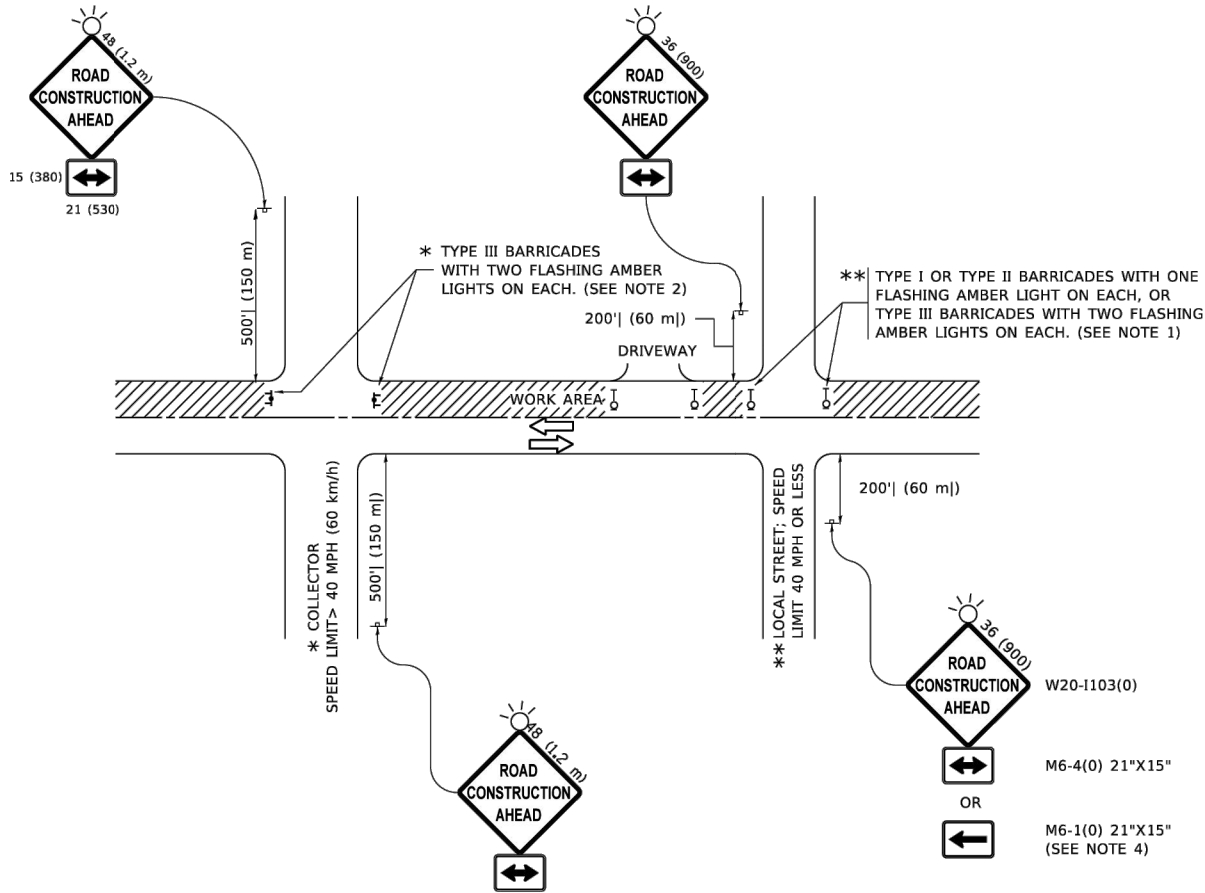
FILE NAME: p:\w\idot-aw\_bentley.com\p\w\DOT\Documents\DOT\_Offices\District\_1\Projects\Disis0223\CA\CA\DD\Main\CA\Sheets\TC10.dgn

	USER NAME	= Lawrence.DeManche	DESIGNED	- L.H.A.	REVISED	- T. RAMMACHER 01-06-00
			DRAWN	-	REVISED	- A. SCHUETZE 07-01-13
	PLOT SCALE	= 100.0000' / in.	CHECKED	-	REVISED	- A. SCHUETZE 09-15-16
	PLOT DATE	= 5/3/2024	DATE	- 06-89	REVISED	- D. SENDERAK 05-03-24

STATE OF ILLINOIS  
DEPARTMENT OF TRANSPORTATION

TRAFFIC CONTROL AND PROTECTION FOR  
SIDE ROADS, INTERSECTIONS, AND DRIVEWAYS

F.A. RTE.	SECTION	COUNTY	TOTAL SHEETS	SHEET NO.
TC-10		CONTRACT NO.		
ILLINOIS		FED. AID PROJECT		



NOTES:

- SIDE ROAD WITH A SPEED LIMIT OF 40 MPH (60 km/h) OR LESS AS SHOWN ON THE DRAWING AND AS DIRECTED BY THE ENGINEER:
  - ONE "ROAD CONSTRUCTION AHEAD" SIGN 36 x 36 (900x900) WITH A FLASHER MOUNTED ON IT APPROXIMATELY 200' (60 m) IN ADVANCE OF THE MAIN ROUTE.
  - THE CLOSED PORTION OF THE MAIN ROUTE SHALL BE PROTECTED BY BLOCKING WITH TYPE I, TYPE II OR TYPE III BARRICADES, 1/3 OF THE CROSS SECTION OF THE CLOSED PORTION.
- SIDE ROAD WITH A SPEED LIMIT GREATER THAN 40 MPH (60 km/h) AS SHOWN ON THE DRAWING AND AS DIRECTED BY THE ENGINEER:
  - ONE "ROAD CONSTRUCTION AHEAD" SIGN 48 x 48 (1.2 m x 1.2 m) WITH A FLASHER MOUNTED ON IT APPROXIMATELY 500' (150 m) IN ADVANCE OF THE MAIN ROUTE.
  - THE CLOSED PORTION OF THE MAIN ROUTE SHALL BE PROTECTED BY BLOCKING WITH TYPE III BARRICADES, 1/2 OF THE CROSS SECTION OF THE CLOSED PORTION.
- CONES MAY BE SUBSTITUTED FOR BARRICADES OR DRUMS AT HALF THE SPACING DURING DAY OPERATIONS. CONES SHALL BE A MINIMUM OF 28 (710) IN HEIGHT.
- WHEN THE SIDE ROAD LIES BETWEEN THE BEGINNING OF THE MAINLINE
- SIGNING AND THE WORK ZONE, A SINGLE HEADED ARROW (M6-1) SHALL BE USED IN LIEU OF THE DOUBLE HEADED ARROW (M6-4).
- WHEN WORK IS BEING PERFORMED ON A SIDE ROAD OR DRIVEWAY, FOLLOW THE APPLICABLE STANDARD(S). THE DIRECTIONAL ARROW (M6-1 OR M6-4) SHALL BE COVERED OR REMOVED WHEN NO LONGER CONSISTENT WITH THE TRAFFIC CONTROL SET-UP.
- ADVANCE WARNING SIGNS ARE TO BE OMITTED ON DRIVEWAYS UNLESS OTHERWISE SPECIFIED IN THE PLANS OR BY THE ENGINEER.
- THE TRAFFIC CONTROL AND PROTECTION FOR SIDE ROADS, INTERSECTIONS, AND DRIVEWAYS SHALL BE INCLUDED IN THE COST OF SPECIFIED TRAFFIC CONTROL STANDARDS OR ITEMS.

All dimensions are in inches (millimeters)  
unless otherwise shown.

FILE NAME = 23R0761-DTLS-01 - TC10

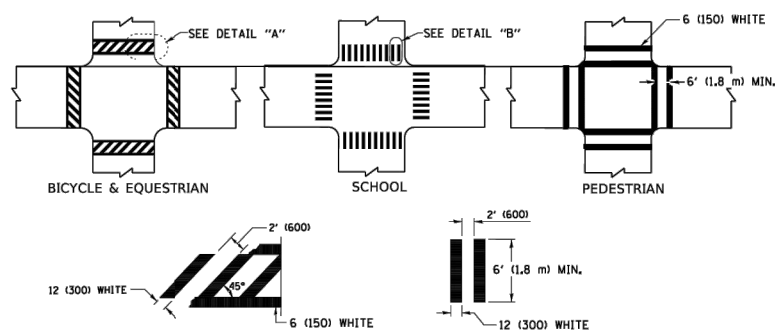
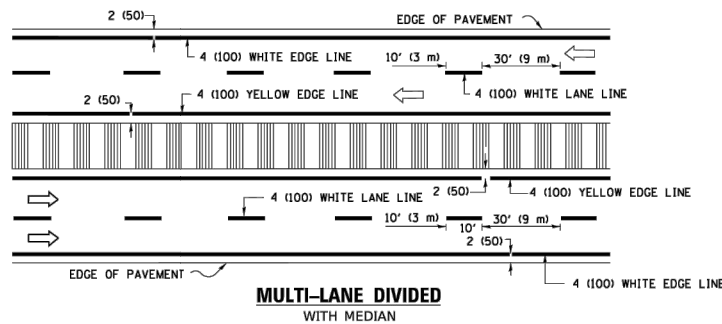
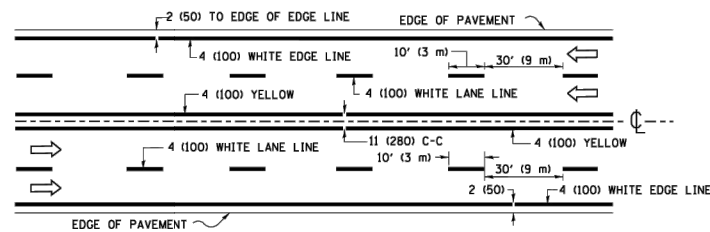
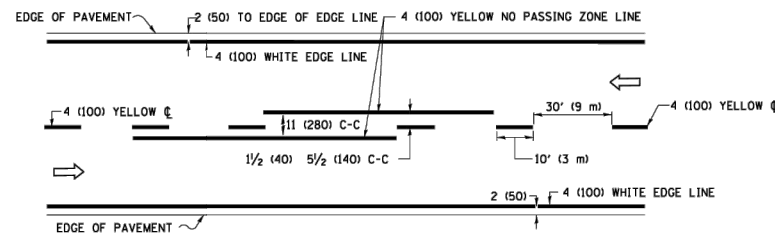
USER NAME	=	DESIGNED	—	REVISED	—
		CHECKED	—	REVISED	—
PLOT SCALE	=	DRAWN	—	REVISED	—
PLOT DATE	=	CHECKED	—	REVISED	—

STATE OF ILLINOIS  
DEPARTMENT OF TRANSPORTATION

IDOT DISTRICT ONE STANDARDS

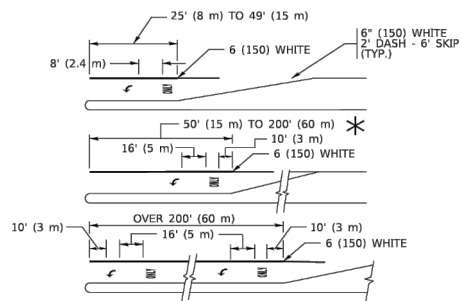
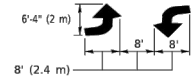
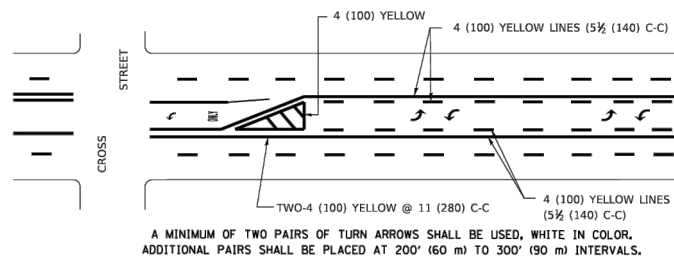
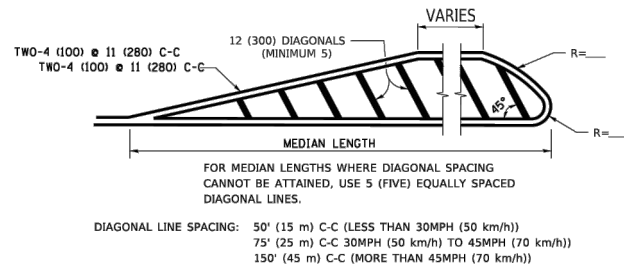
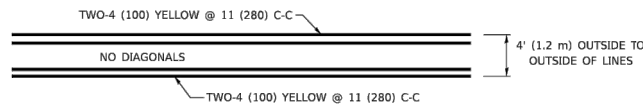
SCALE: SHEET NO. 18 OF 21 SHEETS STA. TO STA.

MUN RTE.	SECTION	COUNTY	TOTAL SHEETS	SHEET NO.
0502	25-00080-00-RS	WILL	22	18
CONTRACT NO. 61L81				
FED. ROAD DIST. NO. 1 ILLINOIS FED. AID PROJECT 25AM(770)				



\* MARKINGS SHALL BE INSTALLED PARALLEL TO THE CENTERLINE OF THE ROAD WHICH IT CROSSES

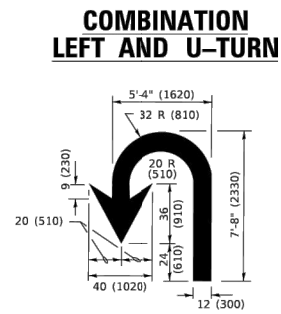
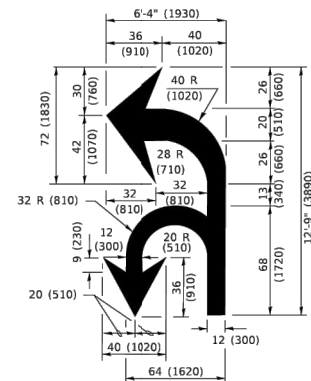
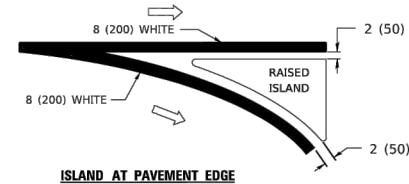
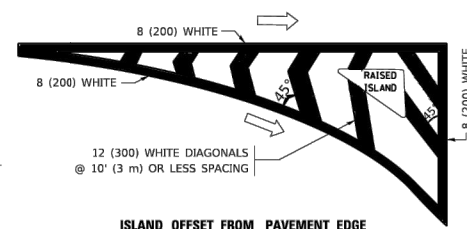
### DETAIL "B"



FULL SIZE LETTERS 8" (2.4 m) AND ARROWS SHALL BE USED.

AREA = 15.6 SQ. FT. (1.5 m<sup>2</sup>) ONLY AREA = 20.8 SQ. FT. (1.9 m<sup>2</sup>)

\* TURN LANES IN EXCESS OF 400' (120 m) IN LENGTH MAY HAVE AN ADDITIONAL SET OF ARROW - "ONLY" INSTALLED MIDWAY BETWEEN THE OTHER TWO SETS OF ARROW - "ONLY".



D(FT)	SPEED LIMIT
345	30
425	35
500	40
580	45
665	50
750	55

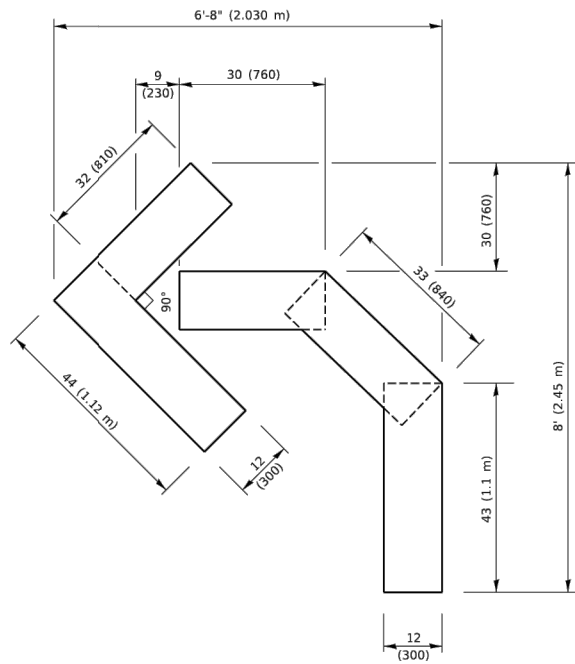
TYPE OF MARKING	WIDTH OF LINE	PATTERN	COLOR	SPACING / REMARKS
CENTERLINE ON 2 LANE PAVEMENT	4 (100)	SKIP-DASH	YELLOW	10' (3 m) LINE WITH 30' (9 m) SPACE
CENTERLINE ON MULTI-LANE UNDIVIDED PAVEMENT	2 @ 4 (100)	SOLID	YELLOW	11 (280) C-C
NO PASSING ZONE LINES: FOR ONE DIRECTION FOR BOTH DIRECTIONS	4 (100) 2 @ 4 (100)	SOLID SOLID	YELLOW YELLOW	5½ (140) C-C FROM SKIP-DASH CENTERLINE 11 (280) C-C OMIT SKIP-DASH CENTERLINE BETWEEN
LANE LINES	4 (100) 5 (125) ON FREEWAYS	SKIP-DASH SKIP-DASH	WHITE WHITE	10' (3 m) LINE WITH 30' (9 m) SPACE
DOTTED LINES (EXTENSIONS OF CENTER, LANE OR TURN LANE MARKINGS)	SAME AS LINE BEING EXTENDED	SKIP-DASH	SAME AS LINE BEING EXTENDED	2' (600) LINE WITH 6' (1.8 m) SPACE
EDGE LINES	4 (100)	SOLID	YELLOW-LEFT WHITE-RIGHT	OUTLINE MEDIANS IN YELLOW
TURN LANE MARKINGS	6 (150) LINE; FULL SIZE LETTERS & SYMBOLS (8' (2.4m))	SOLID	WHITE	SEE TYPICAL TURN LANE MARKING DETAIL
TWO WAY LEFT TURN MARKING	2 @ 4 (100) EACH DIRECTION  8' (2.4m) LEFT ARROW	SKIP-DASH AND SOLID IN PAIRS	YELLOW  WHITE	10' (3 m) LINE WITH 30' (9 m) SPACE FOR SKIP-DASH; 5½ (140) C-C BETWEEN SOLID LINE AND SKIP-DASH LINE SEE TYPICAL TWO-WAY LEFT TURN MARKING DETAIL
CROSSWALK LINES (PEDESTRIAN) A. DIAGONALS (BIKE & EQUESTRIAN) B. LONGITUDINAL BARS (SCHOOL)	2 @ 6 (150) 12 (300) @ 45° 12 (300) @ 90°	SOLID SOLID SOLID	WHITE WHITE WHITE	NOT LESS THAN 6' (1.8 m) APART 2' (600) APART 2' (600) APART SEE TYPICAL CROSSWALK MARKING DETAILS.
STOP LINES	24 (600)	SOLID	WHITE	PLACE 4' (1.2 m) IN ADVANCE OF AND PARALLEL TO CROSSWALK, IF PRESENT. OTHERWISE, PLACE AT DESIRED STOPPING POINT, PARALLEL TO CROSSROAD CENTERLINE, WHERE POSSIBLE
PAINTED MEDIANS	2 @ 4 (100) WITH 12 (300) DIAGONALS @ 45° NO DIAGONALS USED FOR 4' (1.2 m) WIDE MEDIANS	SOLID	YELLOW: TWO WAY TRAFFIC WHITE: ONE WAY TRAFFIC	11 (280) C-C FOR THE DOUBLE LINE SEE TYPICAL PAINTED MEDIAN MARKING.
GORE MARKING AND CHANNELIZING LINES	8 (200) WITH 12 (300) DIAGONALS @ 45°	SOLID	WHITE	DIAGONALS: 15' (4.5 m) C-C (LESS THAN 30MPH (50 km/h)) 20' (6 m) C-C 30MPH (50 km/h) TO 45MPH (70 km/h)) 30' (9 m) C-C (OVER 45MPH (70 km/h))
RAILROAD CROSSING	24 (600) TRANSVERSE LINES; "RR" IS 6' (1.8 m) LETTERS; 16 (400) LINE FOR "X"	SOLID	WHITE	SEE STATE STANDARD 780001 AREA OF: "R"=3.6 SQ. FT. (0.33 m <sup>2</sup> EACH "X"=54.0 SQ. FT. (5.0 m <sup>2</sup> )
SHOULDER DIAGONALS (REQUIRED FOR SHOULDERS ≥ 8')	12 (300) @ 45°	SOLID	WHITE - RIGHT YELLOW - LEFT	50' (15 m) C-C (LESS THAN 30MPH (50 km/h)) 75' (23 m) C-C (30 MPH (50 km/h) TO 45MPH (70 km/h)) 150' (45 m) C-C (OVER 45MPH (70 km/h))
U TURN ARROW	SEE DETAIL	SOLID	WHITE	16.3 SF
2 ARROW COMBINATION LEFT AND U TURN	SEE DETAIL	SOLID	WHITE	30.4 SF

FOR FURTHER DETAILS ON PAVEMENT MARKING REFER TO  
STANDARD SPECIFICATIONS FOR ROAD AND BRIDGE  
CONSTRUCTION AND STATE STANDARD 780001.

All dimensions are in inches (millimeters) unless otherwise shown.

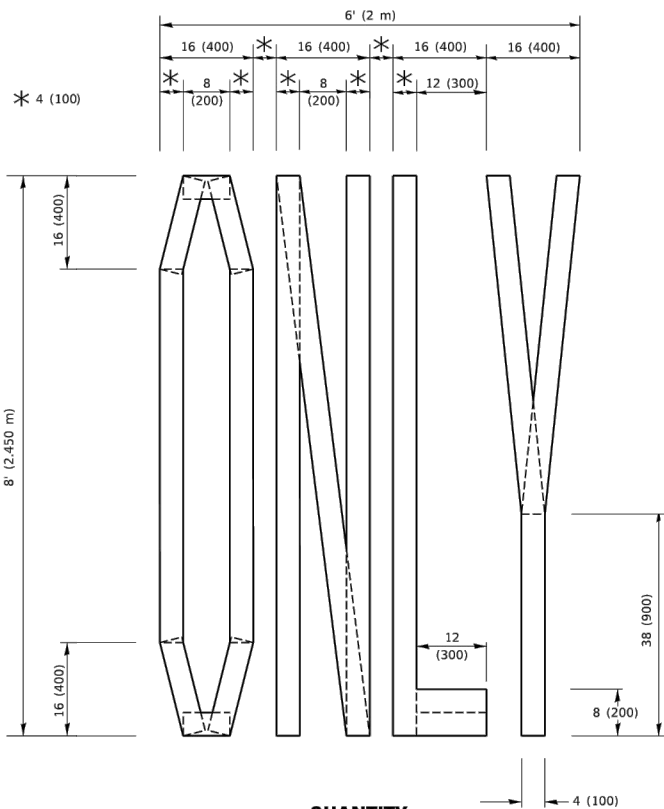
	USER NAME = footerj	DESIGNED - EVERS	REVISED - C. JUCIUS 09-09-09	STATE OF ILLINOIS DEPARTMENT OF TRANSPORTATION	DISTRICT ONE TYPICAL PAVEMENT MARKINGS				F.A. RTE.	SECTION	COUNTY	TOTAL SHEETS	SHEET NO.
		DRAWN -	REVISED - C. JUCIUS 07-01-13										
	PLOT SCALE = 50.0000' / in.	CHECKED -	REVISED - C. JUCIUS 12-21-15										
	PLOT DATE = 3/4/2019	DATE - 03-19-90	REVISED - C. JUCIUS 04-12-16										
					SCALE: NONE	SHEET 1 OF 2 SHEETS	STA.	TO STA.	TC-13 CONTRACT NO.				
									ILLINOIS FED. AID PROJECT				

FILE NAME = 23R0761-DTLS-01 - TC13	USER NAME =	DESIGNED —	REVISED —	STATE OF ILLINOIS DEPARTMENT OF TRANSPORTATION	IDOT DISTRICT ONE STANDARDS	MUN RTE.	SECTION	COUNTY	TOTAL SHEETS	SHEET NO.
		CHECKED —	REVISED —							
	PLOT SCALE =	DRAWN —	REVISED —							
	PLOT DATE =	CHECKED —	REVISED —							
SCALE:					SHEET NO. 19 OF 21 SHEETS	STA.	TO STA.	FED. ROAD DIST. NO. 1 ILLINOIS FED. AID PROJECT 25AM(770)		
					CONTRACT NO. 61L81					



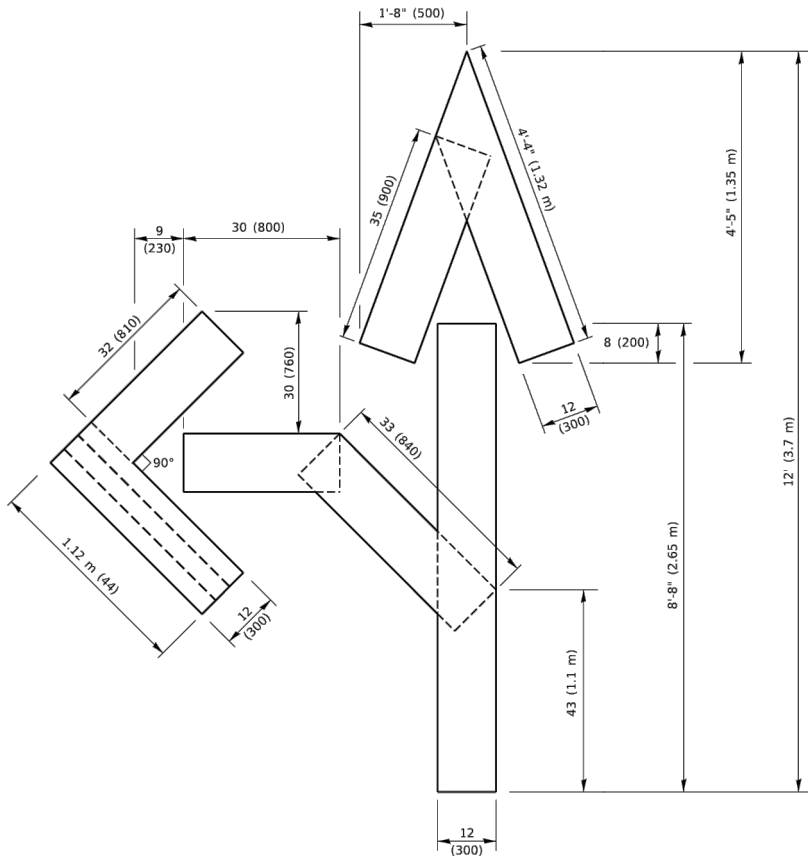
**QUANTITY**

4 (100) LINE = 45.5 ft. (13.9 m)  
15.2 sq. ft. (1.41 sq. m)



**QUANTITY**

4 (100) LINE = 64.1 ft. (19.5 m)  
21.4 sq. ft. (1.99 sq. m)

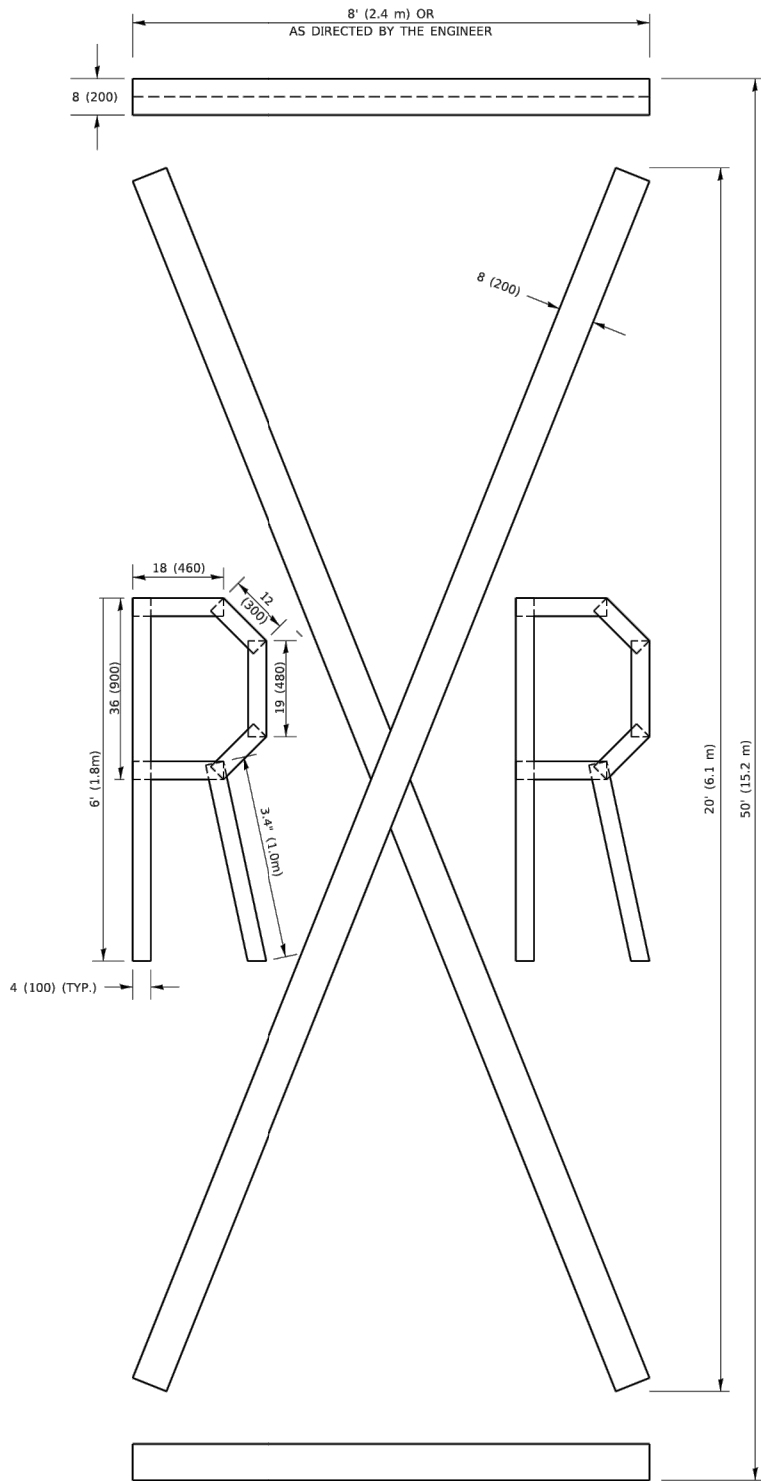


**QUANTITY**

4 (100) LINE = 82.5 ft. (25.1 m)  
27.5 sq. ft. (2.53 sq. m)

**NOTE:**

ALL QUANTITIES OF PLACEMENT ARE REPRESENTED  
IN LINEAR FEET OF 4" LINES TO MATCH THE  
4" TEMPORARY TAPE PAY ITEM AND REPRESENTS  
THE TOTAL QUANTITY OF 4" TAPE REQUIRED.



**QUANTITY**

4 (100) LINE = 225.9 ft. (68.9 m)  
75.3 sq. ft. (6.99 sq. m)

All dimensions are in inches (millimeters)  
unless otherwise shown.

FILE NAME: P:\V\1084EB\DOT\Illinois.gov\PM\DOT\Documents\DOT\_Offices\District 1\Projects\Dis562234\CADD\Drawn\CADSheet16.dgn

	USER NAME = footernj	DESIGNED -	REVISED - T. RAMMACHER 03-02-98	STATE OF ILLINOIS DEPARTMENT OF TRANSPORTATION	SHORT TERM PAVEMENT MARKING LETTERS AND SYMBOLS					F.A. RTE.	SECTION	COUNTY	TOTAL SHEETS	SHEET NO.	
		DRAWN -	REVISED - E. GOMEZ 08-28-00												
	PLOT SCALE = 50.0068 ' / in.	CHECKED -	REVISED - E. GOMEZ 08-28-00												
	PLOT DATE = 3/4/2019	DATE - 09-18-94	REVISED - A. SCHUETZE 09-15-16												
						SCALE: NONE	SHEET 1	OF 1	SHEETS	STA.	TO STA.	TC-16			
											ILLINOIS FED. AID PROJECT				

FILE NAME = 23R0761-DTLS-01 - TC16

USER NAME =	DESIGNED —	REVISED —
	CHECKED —	REVISED —
PLOT SCALE =	DRAWN —	REVISED —
PLOT DATE =	CHECKED —	REVISED —

STATE OF ILLINOIS  
DEPARTMENT OF TRANSPORTATION

IDOT DISTRICT ONE STANDARDS

SCALE: SHEET NO. 20 OF 21 SHEETS STA. TO STA.

MUN RTE.	SECTION	COUNTY	TOTAL SHEETS	SHEET NO.
0502	25-00080-00-RS	WILL	22	20
CONTRACT NO. 61L81				
FED. ROAD DIST. NO. 1	ILLINOIS	FED. AID PROJECT	25AM(770)	

MODEL: Default  
FILE NAME: jw:\IL0448IB\INTG\Illinois.gov\PWD\DOT\Documents\IDOT Office\District 1\Projects\Dist56272x3a\CADData\CADsheets\c23.dgn

USER NAME	= footemj	DESIGNED	-	REVISED	- R. MIRS 09-15-97
		DRAWN	-	REVISED	- R. MIRS 12-11-97
PLOT SCALE	= 50.0000 ' / in.	CHECKED	-	REVISED	- T. RAMMACHER 02-02-99
PLOT DATE	= 3/4/2019	DATE	-	REVISED	- C. JUCIUS 01-31-07

STATE OF ILLINOIS DEPARTMENT OF TRANSPORTATION
---

ARTERIAL ROAD INFORMATION SIGN			
SCALE: NONE	SHEET 1	OF 1	SHEETS
STA.	TO STA.		

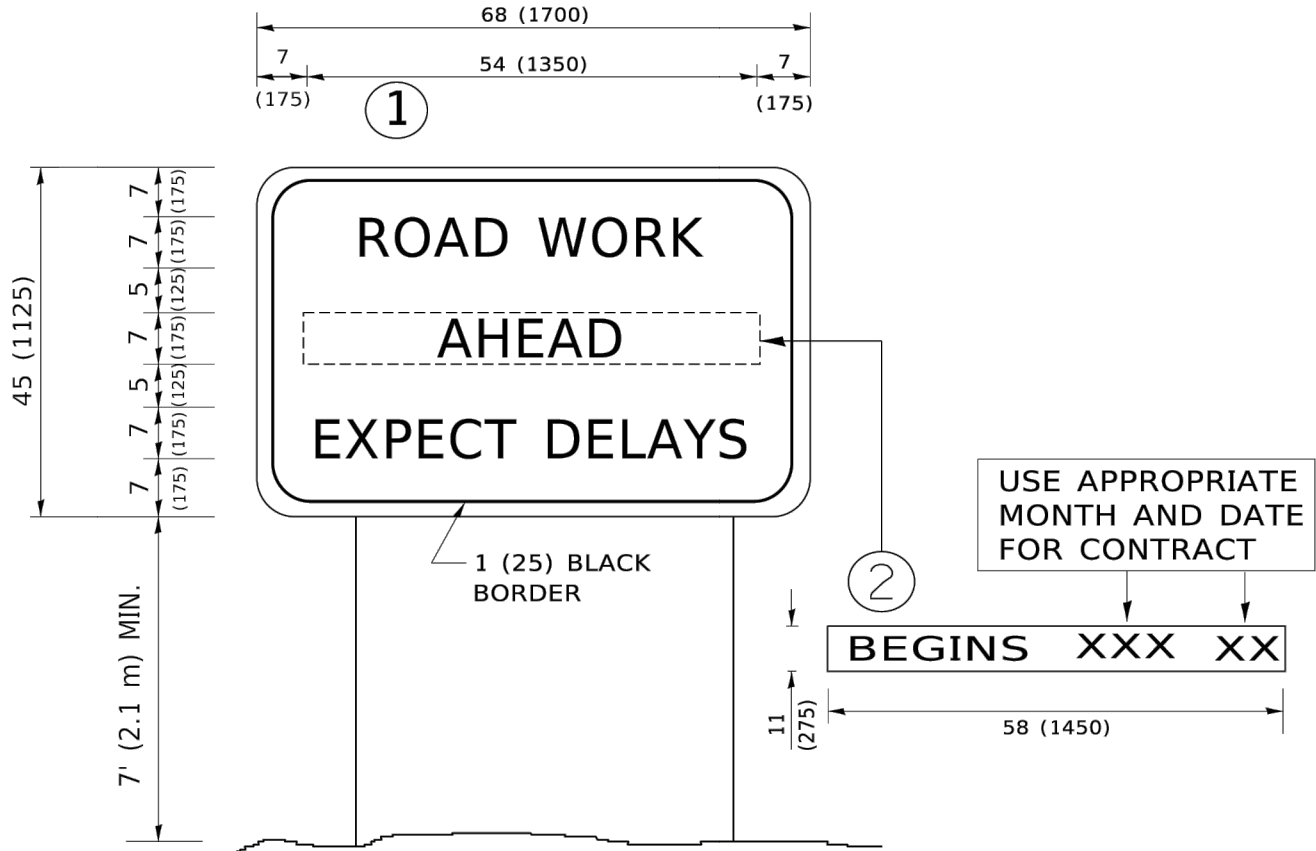
F.A. RTE.	SECTION	COUNTY	TOTAL SHEETS	SHEET NO.
TC-22		CONTRACT NO.		
		ILLINOIS	FED. AID PROJECT	

FILE NAME = 23R0761-DTLS-01 - TC22	USER NAME =	DESIGNED —	REVISED —
		CHECKED —	REVISED —
	PLOT SCALE =	DRAWN —	REVISED —
	PLOT DATE =	CHECKED —	REVISED —

STATE OF ILLINOIS DEPARTMENT OF TRANSPORTATION
---

IDOT DISTRICT ONE STANDARDS			
SCALE:	SHEET NO. 20	OF 21	SHEETS
STA.	TO STA.		

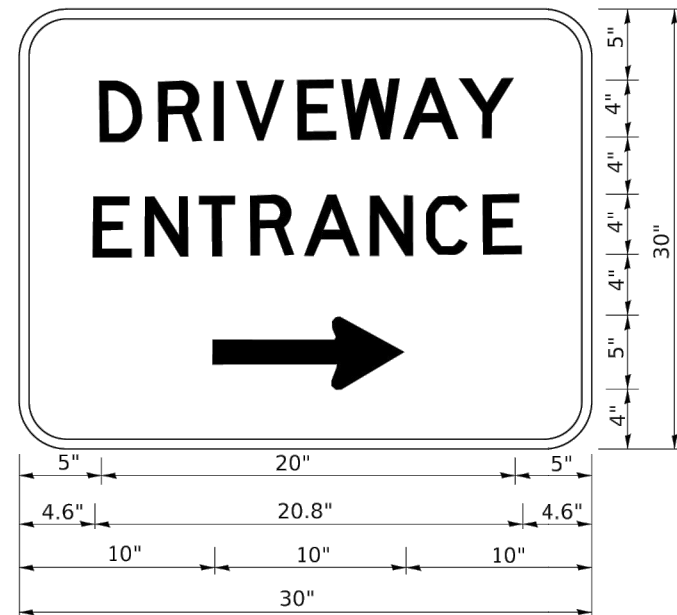
MUN RTE.	SECTION	COUNTY	TOTAL SHEETS	SHEET NO.
0502	25-00080-00-RS	WILL	22	21
CONTRACT NO. 61L81				
FED. ROAD DIST. NO. 1	ILLINOIS	FED. AID PROJECT	25AM(770)	



NOTES:

1. USE BLACK LETTERING ON ORANGE BACKGROUND.
2. ERECT SIGNS IN ADVANCE OF THE LOCATION FOR THE "ROAD CONSTRUCTION AHEAD" SIGN AT LOCATIONS AS DIRECTED BY THE ENGINEER.
3. ERECT SIGN①WITH INSTALLED PANEL②ONE WEEK PRIOR TO THE START OF CONSTRUCTION.
4. REMOVE PANEL②SOON AFTER THE START OF CONSTRUCTION.
5. SEE SPECIAL PROVISION FOR "TEMPORARY INFORMATION SIGNING" FOR ADDITIONAL INFORMATION.
6. ONE SIGN ASSEMBLY EQUALS 25.70 SQ. FT. (2.3 SQ. M.)
7. SHALL BE PAID FOR AS TEMPORARY INFORMATION SIGNING.

ALL DIMENSIONS ARE IN INCHES (MILLIMETERS)  
UNLESS OTHERWISE SHOWN.



3.0" RADIUS, 0.5" BORDER, WHITE ON GREEN; REFLECTORIZED  
"DRIVEWAY" D; "ENTRANCE" D; STANDARD ARROW CUSTOM 12.0" x 5.0"

NOTES:

1. HALF OF THE SIGNS WILL REQUIRE A LEFT HAND FACING ARROW.
2. TWO SIGNS SHALL BE USED AT EACH COMMERCIAL ENTRANCE PLACED BACK-TO-BACK: ONE WITH A RIGHT HAND ARROW (SHOWN) SHALL BE PLACED ON THE NEAR RIGHT SIDE THE DRIVEWAY AND ONE WITH A LEFT HAND ARROW SHALL BE PLACED ON THE FAR LEFT SIDE OF THE DRIVEWAY.
3. SIGNS TO BE PAID FOR AS ITEM "TEMPORARY INFORMATION SIGNING".

FILE NAME PROJECT NO.	USER NAME = leysa	DESIGNED -	REVISED - C. JUCIUS 02-15-07	STATE OF ILLINOIS DEPARTMENT OF TRANSPORTATION	DRIVEWAY ENTRANCE SIGNING					F.A. RTE.	SECTION	COUNTY	TOTAL SHEETS	SHEET NO.
		DRAWN -	REVISED -											
	PLOT SCALE = 50.0000 ' / in.	CHECKED -	REVISED -		TC-26					CONTRACT NO.				
	PLOT DATE = 8/6/2021	DATE -	REVISED -											
						SCALE: NONE	SHEET 1	OF 1	SHEETS	STA.	TO STA.		ILLINOIS	FED. AID

FILE NAME = 23R0761-DTLS-01 - TC26	USER NAME   =	DESIGNED     —	REVISED     —
		CHECKED     —	REVISED     —
	PLOT SCALE   =	DRAWN       —	REVISED     —
	PLOT DATE    =	CHECKED     —	REVISED     —

STATE OF ILLINOIS DEPARTMENT OF TRANSPORTATION			
---	--	--	--

IDOT DISTRICT ONE STANDARDS							
MUN RTE.	SECTION		COUNTY	TOTAL SHEETS	SHEET NO.		
0502	25-00080-00-RS		WILL	22	22		
CONTRACT NO. 61L81							
SCALE:		SHEET NO. 21 OF 21 SHEETS		STA.		TO STA.	
FED. ROAD DIST. NO. 1		ILLINOIS		FED. AID PROJECT 25AM(770)			