

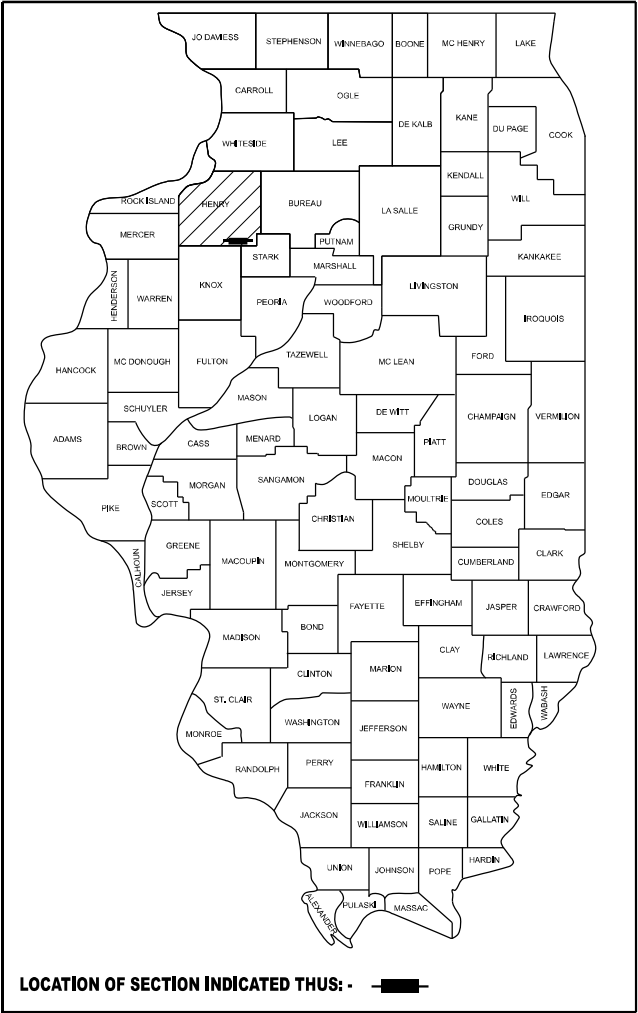
STATE OF ILLINOIS
DEPARTMENT OF TRANSPORTATION

F.A. RTE.	SECTION	COUNTY	TOTAL SHEETS	SHEET NO.
VAR	VARIOUS	HENRY	3	1
		ILLINOIS	CONTRACT NO. 64U87	

PROPOSED
HIGHWAY PLANS

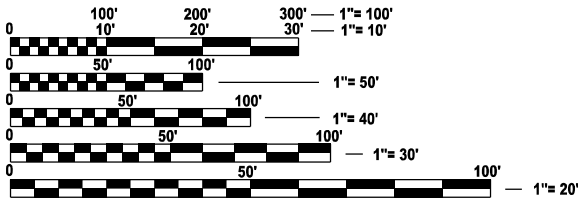
ROUTE: VARIOUS
D2 SR 2026-01
AGGREGATE SHOULDER IMPROVEMENT
HENRY COUNTY

C-92-113-25



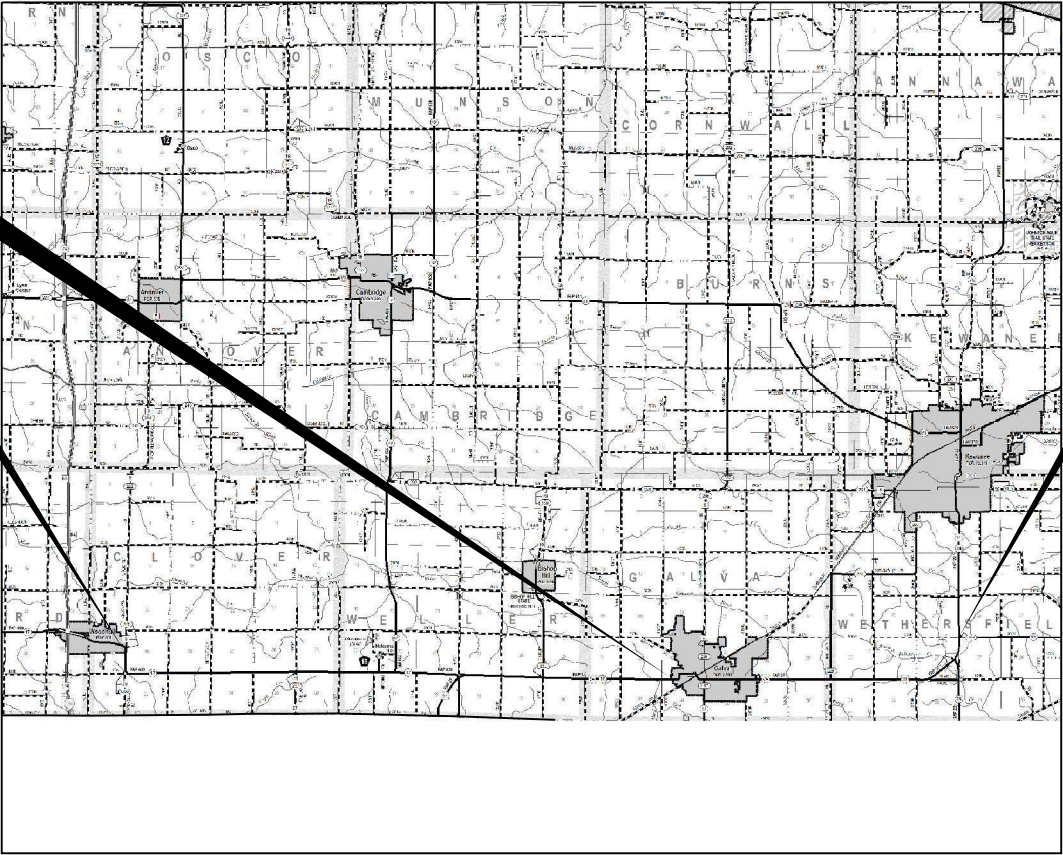
IL 17/ US 34 ENDS
WALLACE ST., GALVA

IL 17 BEGINS
INTERSECTION OF IL 17 AND E. 7TH ST



FULL SIZE PLANS HAVE BEEN PREPARED USING STANDARD
ENGINEERING SCALES. REDUCED SIZED PLANS WILL NOT
CONFORM TO STANDARD SCALES. IN MAKING MEASUREMENTS
ON REDUCED PLANS, THE ABOVE SCALES MAY BE USED.

J.U.L.I.E.
JOINT UTILITY LOCATION INFORMATION FOR EXCAVATION
1-800-892-0123
OR 811



IL 91 BEGINS
INTERSECTION OF IL 91 & US 34
IL 91 ENDS
HENRY COUNTY LINE

FIELD ENGINEER: STEPHANIE McMEEKAN 815-677-5282
OPERATION SUPERVISOR: DAN LINK 309-476-8158
DESIGNER: NICK VOCK 815-284-5407
CONTRACT NO. 64U87

GROSS LENGTH = 175,296 FT. = 33.2 MILES
NET LENGTH = 87,648 FT. = 16.6 MILES

STATE OF ILLINOIS
DEPARTMENT OF TRANSPORTATION

SUBMITTED July 30 20 25
[Signature] REGIONAL ENGINEER

October 3 20 25
[Signature] ENGINEER OF DESIGN AND ENVIRONMENT

October 3 20 25
[Signature] DIRECTOR OF HIGHWAYS PROJECT IMPLEMENTATION

PRINTED BY THE AUTHORITY
OF THE STATE OF ILLINOIS

INDEX OF SHEETS

- 1
- COVER SHEET
- 2
- INDEX OF SHEETS, STANDARDS, GENERAL NOTES, AND TYPICAL
- 3
- SUMMARY OF QUANTITIES

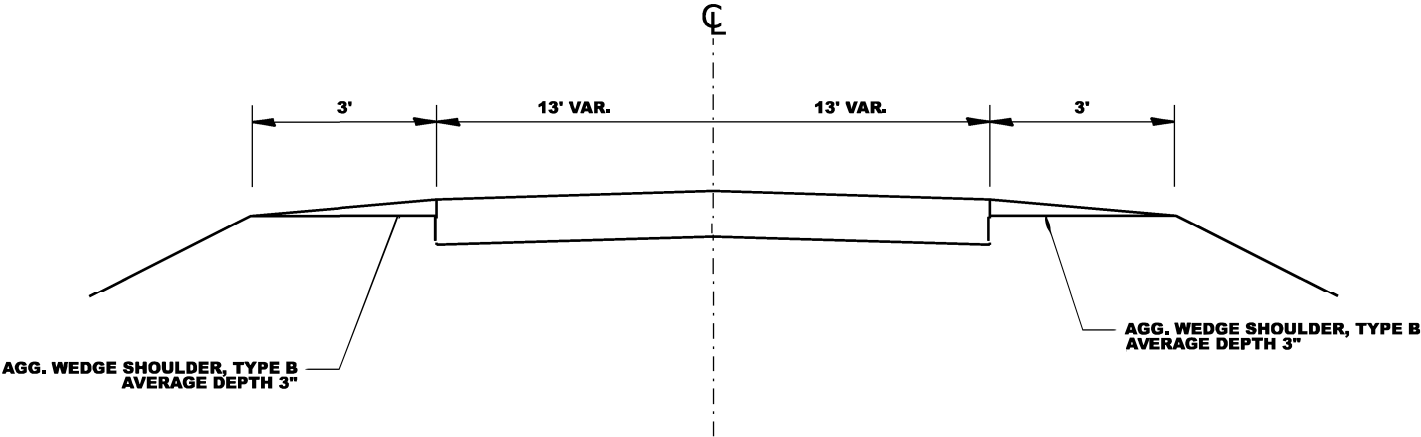
GENERAL NOTES

CONTACT THE OPERATIONS SUPERVISOR FOR HENRY COUNTY DAN LINK (309-236-3545)
OR OPERATIONS FIELD ENGINEER STEPHANIE McMEEKAN (815-677-5282) FOR COORDINATION.

HIGHWAY STANDARDS

- 701006-05
- OFF-RD OPERATIONS, 2L, 2W, 15' (4.5M) TO 24' (600MM) FROM PAVEMENT EDGE
- 701306-04
- LANE CLOSURE, 2L, 2W, SLOW MOVING OPERATIONS DAY ONLY, FOR SPEEDS ≥ 45 MPH
- 701901-10
- TRAFFIC CONTROL DEVICES

TYPICAL SECTION IL 17, US 34, IL 91



MODEL D:_SHT INDEX
FILE NAME p:\ind-pa-bailey.com\INDOT\Documents\INDOT Office\David L\ORD Project\Operations\Maintenance Section\Stephanie McMeekan\Henry Operations\Contract Maintenance\FY 2026\64U87 - Various - Agg. Shoulder\CD\shs64U87 - 02 Index sheet

	USER NAME = Nicholas Vock	DESIGNED -	REVISED -	STATE OF ILLINOIS DEPARTMENT OF TRANSPORTATION	INDEX OF SHEETS & HIGHWAY STANDARDS	F.A. RTE.	SECTION	COUNTY	TOTAL SHEETS	SHEET NO.
		DRAWN -	REVISED -			VAR	VARIOUS	HENRY	3	2
	PLOT SCALE = \$SCALE\$	CHECKED -	REVISED -			CONTRACT NO. 64U87				
	PLOT DATE = 7/29/2025	DATE -	REVISED -			ILLINOIS / FED. AID PROJECT				
SCALE: [SHEET OF SHEETS] STA. TO STA.										

MODEL: D2_SHT_SQ
FILE NAME: j:\work\p2\hwy.com\PI\PIDOT\Documents\IDOT\Offices\District 2\CRD Projects\Operations\Maintenance Section\Stephens_Maintenance\Henry Operations\Contract Maintenance\FY 2026\64U87 - Various - Agg Shoulder\CAD\sheet\64U87 - 03 - SQQ

SUMMARY OF QUANTITIES				CONSTR. CODE
				100% STATE
CODE NO.	ITEM	UNIT	TOTAL QUANTITY	NONE
				0021
48102100	AGGREGATE WEDGE SHOULDER, TYPE B	TON	9983	9983
67100100	MOBILIZATION	L SUM	1	1
70100460	TRAFFIC CONTROL AND PROTECTION, STANDARD 701306	L SUM	1	1

	USER NAME = Nicholas,Vock	DESIGNED -	REVISED -	STATE OF ILLINOIS DEPARTMENT OF TRANSPORTATION	SUMMARY OF QUANTITIES			F.A. RTE.	SECTION	COUNTY	TOTAL SHEETS	SHEET NO.
		DRAWN -	REVISED -					VAR	VARIOUS	HENRY	3	1
	PLOT SCALE = \$\$SCALE\$	CHECKED -	REVISED -					CONTRACT NO. 64U87				
	PLOT DATE = 7/30/2025	DATE -	REVISED -		SCALE:	SHEET	OF	SHEETS	STA.	TO STA.	ILLINOIS FED. AID PROJECT	