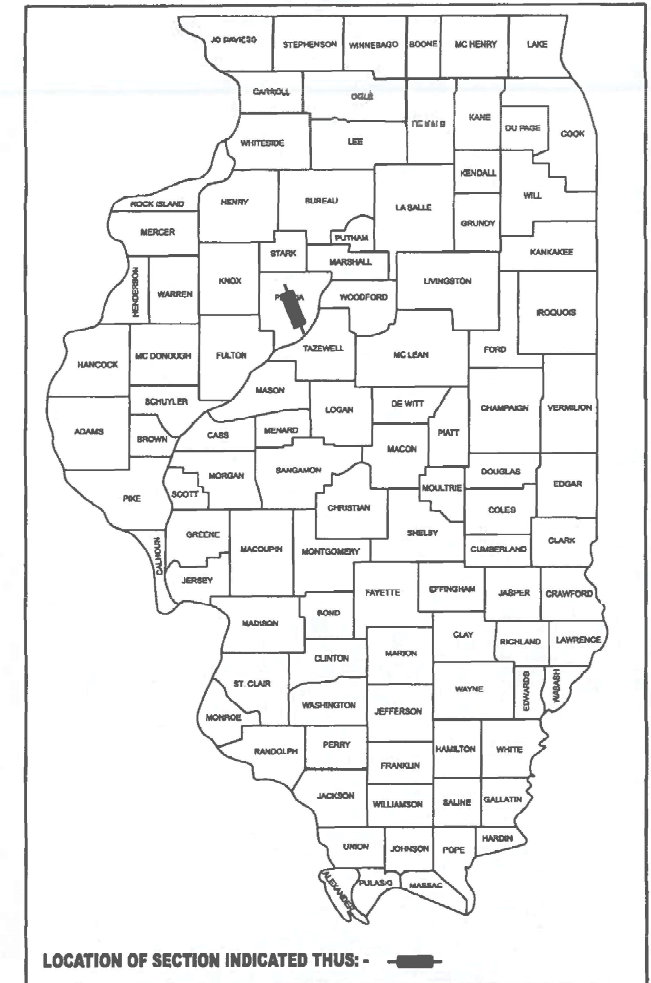


STATE OF ILLINOIS  
DEPARTMENT OF TRANSPORTATION

| FAI RTE | SECTION                      | COUNTY      | TOTAL SHEETS       | SHEET NO. |
|---------|------------------------------|-------------|--------------------|-----------|
| 74      | (72-7)L-1;(72(8,9);90-11)L-2 | PEOR.-TAZE. | 27                 | 1         |
|         |                              | ILLINOIS    | CONTRACT NO. 68K93 |           |

D-94-008-26



**PROJECT DESCRIPTION:**

RELOCATION OF HIGH MAST LIGHT TOWERS, INCLUDING NEW FOUNDATIONS AND REMOVAL OF EXISTING FOUNDATIONS ALONG I-74 FROM STERLING AVENUE IN PEORIA TO EAST WASHINGTON ST. IN EAST PEORIA.

STATE OF ILLINOIS  
DEPARTMENT OF TRANSPORTATION

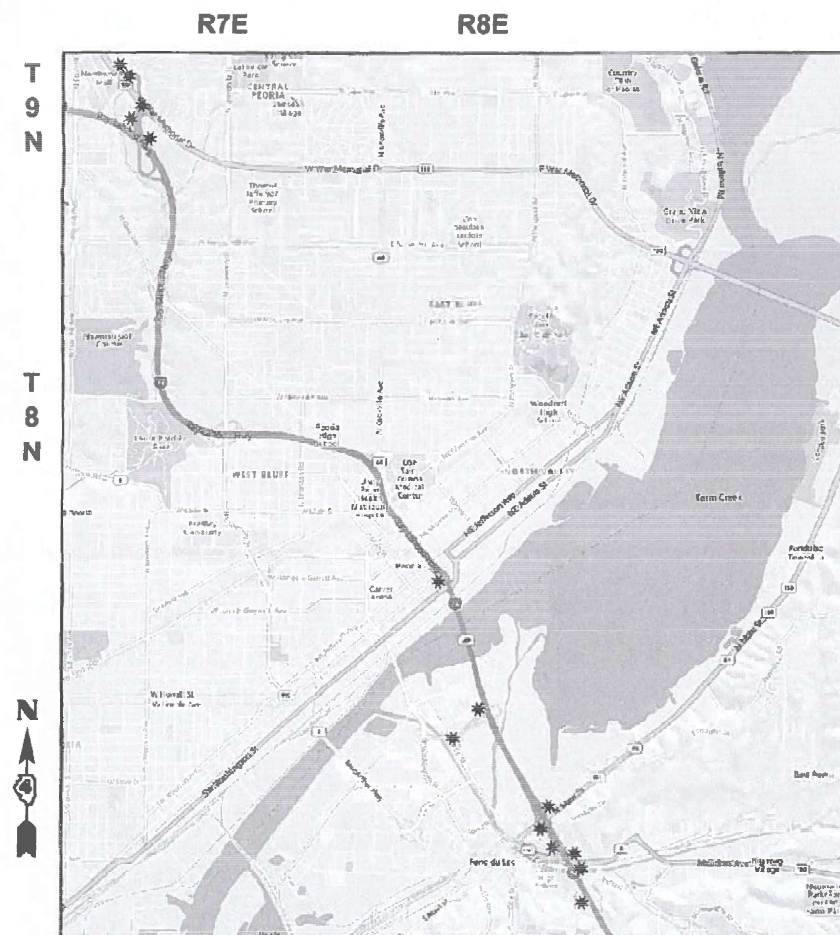
SUBMITTED March 19 2024  
*Jessie S. Smith*  
REGIONAL ENGINEER  
May 8 2026  
*[Signature]*  
ENGINEER OF DESIGN AND ENVIRONMENT  
May 8 2026  
*[Signature]*  
DIRECTOR OF HIGHWAYS PROJECT IMPLEMENTATION

PRINTED BY THE AUTHORITY  
OF THE STATE OF ILLINOIS

**PROPOSED  
HIGHWAY PLANS**

FAI ROUTE 74 (I-74 (1074))  
SECTION (72-7)L-1;(72(8,9);90-11)L-2  
PROJECT: NHPP-AME5(606)  
HIGH MAST LIGHT TOWERS RELOCATION  
PEORIA-TAZEWELL COUNTIES

C-94-010-26



PROJECT LENGTH = 6.9 MILES

**INDEX OF SHEETS**

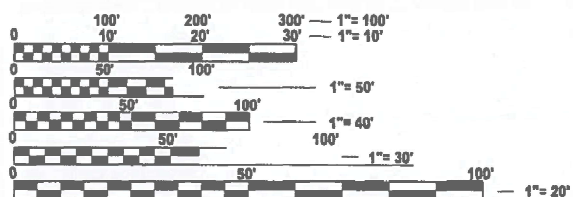
- 1 COVER SHEET
- 2 COMMITMENTS & CONSTRUCTION NOTES
- 3 SUMMARY OF QUANTITIES
- 4 SCHEDULE OF QUANTITIES
- 5-7 FOUNDATION DETAILS
- 8-12 LIGHT TOWER FOUNDATION REPLACEMENT PLANS
- 13-17 WIRING PLANS
- 18-27 BORING LOGS

**HIGHWAY STANDARDS**

|           |           |           |
|-----------|-----------|-----------|
| 701001-02 | 701400-12 | 701456-05 |
| 701006-05 | 701406-13 | 701601-09 |
| 701101-05 | 701411-09 | 701901-11 |
| 701106-02 | 701428-01 |           |
| 701301-04 | 701451-05 |           |

**DESIGN DESIGNATION**

I-74: INTERSTATE  
ADT: 43,800 (2023)  
SU: 963  
MU: 2409



FULL SIZE PLANS HAVE BEEN PREPARED USING STANDARD ENGINEERING SCALES. REDUCED SIZED PLANS WILL NOT CONFORM TO STANDARD SCALES. IN MAKING MEASUREMENTS ON REDUCED PLANS, THE ABOVE SCALES MAY BE USED.

J.U.L.I.E.  
JOINT UTILITY LOCATION INFORMATION FOR EXCAVATION  
1-800-892-0123  
OR 811

PROJECT ENGINEER: BEN TELLEFSON  
PROJECT MANAGER: BEN TELLEFSON  
CATALOG NO. 036735-00D  
CONTRACT NO. 68K93

**LEGEND**

| LEGEND  |   |   |     |      |  |
|---|---|---|-----|------|--|
| •   | EX. HIGH MAST LIGHT TOWER               |   |     |      |  |
| —•  | EX. LIGHT POLE                          |   |     |      |  |
| ⊠   | EX. LIGHTING CONTROLLER                 |   |     |      |  |
| LIGHT TOWER DESIGNATION   |   |   |     |      |  |
| <table border="1"> <tr> <td>6</td> <td>EFG</td> </tr> <tr> <td>L-04</td> <td></td> </tr> </table> |   | 6 | EFG | L-04 |  |
| 6   | EFG                                     |   |     |      |  |
| L-04  |   |   |     |      |  |
| 6   | - DENOTES NUMBER OF LUMINAIRES ON TOWER |   |     |      |  |
| E   | - DENOTES LIGHTING CONTROLLER           |   |     |      |  |
| FG  | - DENOTES LIGHTING CIRCUIT              |   |     |      |  |
| L-04  | - DENOTES LIGHT ON CIRCUIT DIAGRAM      |   |     |      |  |

**COMMITMENTS**

THERE ARE NO COMMITMENTS MADE IN CONJUNCTION WITH THIS PROJECT.

COMMITMENTS ARE NOT TO BE ALTERED WITHOUT THE WRITTEN APPROVAL OF ALL PARTIES TO WHICH THE COMMITMENT WAS MADE.

**CONSTRUCTION NOTES**

1. ANY MAINTENANCE OF EXISTING LIGHTING WILL BE CONSIDERED EXTRA WORK IN ACCORDANCE WITH ARTICLE 109.04 OF THE STANDARD SPECIFICATIONS.
2. THE LOCATION OF ALL UTILITIES AND PRIVATELY OWNED FACILITIES SHALL BE FIELD VERIFIED BY THE CONTRACTOR PRIOR TO THE INSTALLATION OF ANY COMPONENTS.
3. THE CONTRACTOR SHALL BE RESPONSIBLE FOR LOCATING EXISTING IDOT ELECTRICAL FACILITIES AT HIS/HER OWN EXPENSE IF REQUIRED. THE CONTRACTOR SHALL ALSO BE LIABLE FOR ANY DAMAGE TO IDOT FACILITIES RESULTING FROM INACCURATE LOCATING.
4. ELECTRICAL WORK SHALL CONFORM WITH NATIONAL, STATE, AND LOCAL CODES.
5. THE CONTRACTOR SHALL PROVIDE ELECTRICAL CABLE SLACK IN ACCORDANCE WITH ARTICLE 873.03.
6. ELECTRICAL CABLE WILL BE MEASURED FOR PAYMENT IN ACCORDANCE WITH ARTICLE 873.04.
7. ALL SURPLUS MATERIALS SHALL BE DISPOSED OF IN ACCORDANCE WITH ARTICLE 202.03 OF THE STANDARD SPECIFICATIONS.
8. THE CONTRACTOR SHALL PERFORM ALL WORK OPERATIONS IN A MANNER TO PREVENT DAMAGE TO THE LIGHT TOWERS AND LUMINAIRE RINGS.
9. THE CONTRACTOR SHALL FURNISH AND INSTALL TEMPORARY WIRING AT EACH LOCATION AS REQUIRED TO MAINTAIN OPERATION OF THE LIGHTING CIRCUIT DURING CONSTRUCTION.

**TRAFFIC CONTROL NOTES**

1. TRAFFIC SHALL BE MAINTAINED ON THE ASSOCIATED ROADWAYS AT ALL TIMES DURING CONSTRUCTION. ANY SHORT-TERM RAMP CLOSURES NEEDED TO RELOCATE A HIGH MAST TOWER REQUIRES PRIOR APPROVAL BY IDOT AND A MINIMUM OF 21 DAY NOTICE.
2. AT ANY LOCATION REQUIRING A SHORT-TERM RAMP CLOSURE TO RELOCATE THE TOWER, THE CONTRACTOR SHALL SCHEDULE THE HIGH MAST TOWER RELOCATION ON A SATURDAY OR SUNDAY BETWEEN SUNRISE AND SUNSET. SHORT-TERM RAMP CLOSURES WILL ONLY BE ALLOWED FOR PUBIC SAFETY DURING THE RELOCATION OF A HIGH MAST TOWER AND NOT FOR THE CONVENINENCE OF THE CONTRACTOR.  
AT ALL OTHER LOCATIONS, THE CONTRACTOR SHALL SCHEDULE THE HIGH MAST TOWER INSTALLATIONS ON MONDAY THROUGH FRIDAY BETWEEN THE HOURS OF 8:30AM AND 3:30PM OR ON A SATURDAY OR SUNDAY BETWEEN SUNRISE AND SUNSET.

MODEL: General Notes (Sheet)  
FILE NAME: c:\pwworking\dot\illinois\pc\reema.sweidan@illinois.gov\17568ID\68K93-shi-GenNote.dgn

|                           |            |           |
|---------------------------|------------|-----------|
| USER NAME = reema.sweidan | DESIGNED - | REVISED - |
|                           | DRAWN -    | REVISED - |
|                           | CHECKED -  | REVISED - |
| PLOT DATE = 10/31/2025    | DATE -     | REVISED - |

**STATE OF ILLINOIS  
DEPARTMENT OF TRANSPORTATION**

**COMMITMENTS & CONSTRUCTION NOTES  
ROUTE FAI 74 (I-74)**

SCALE: SHEET 1 OF 1 SHEETS STA. TO STA.

| F.A.I. RTE.               | SECTION                      | COUNTY      | TOTAL SHEETS | SHEET NO. |
|---------------------------|------------------------------|-------------|--------------|-----------|
| 74                        | (72-7)L-1;(72(8,9);90-11)L-2 | PEOR.-TAZE. | 27           | 2         |
| CONTRACT NO. 68K93        |                              |             |              |           |
| ILLINOIS FED. AID PROJECT |                              |             |              |           |

| CODE NO. | PAY ITEM   | UNIT  | TOTAL QUANTITY | CONSTRUCTION CODE     |                       |
|----------|--|-------|----------------|-----------------------|-----------------------|
|          |  |       |                | PEORIA COUNTY         | TAZEWELL COUNTY       |
|          |  |       |                | 90% FEDERAL/10% STATE | 90% FEDERAL/10% STATE |
|          |  |       |                | 0021 URBAN            | 0021 URBAN            |
| 50200400 | ROCK EXCAVATION FOR STRUCTURES                           | CU YD | 11.5           | 0.0                   | 11.5                  |
| 67100100 | MOBILIZATION   | L SUM | 1.0            | 0.5                   | 0.5                   |
| 81028380 | UNDERGROUND CONDUIT, PVC, 3 1/2" DIA                     | FOOT  | 180.0          | 75.0                  | 105.0                 |
| 81702140 | ELECTRIC CABLE IN CONDUIT, 600V (XLP-TYPE USE) 1/C NO. 4 | FOOT  | 324.0          | 135.0                 | 189.0                 |
| 81702150 | ELECTRIC CABLE IN CONDUIT, 600V (XLP-TYPE USE) 1/C NO. 2 | FOOT  | 960.0          | 400.0                 | 560.0                 |
| 83700300 | LIGHT TOWER FOUNDATION, 48" DIAMETER                     | FOOT  | 261.0          | 100.5                 | 160.5                 |
| 84400205 | RELOCATE EXISTING LIGHT TOWER                            | EACH  | 12.0           | 5.0                   | 7.0                   |
| 89502385 | REMOVE EXISTING CONCRETE FOUNDATION                      | EACH  | 12.0           | 5.0                   | 7.0                   |
| X7010216 | TRAFFIC CONTROL AND PROTECTION, (SPECIAL)                | L SUM | 1.0            | 0.5                   | 0.5                   |
| Z0076600 | TRAINEES   | HOUR  | 500            | 500                   |                       |
| X8130110 | JUNCTION BOX (SPECIAL)                                   | EACH  | 12.0           | 5.0                   | 7.0                   |
| Z0076604 | TRAINEES - TRAINING PROGRAM GRADUATE                     | HOUR  | 500            | 500                   |                       |

\* SPECIALTY ITEM

∅ 0042

MODEL: SOO (Sheet)-1  
FILE NAME: c:\p\work\pwr\illinois.gov\_reema.swaidan@illinois.gov\d1175498\ID468K93-shh-SOO.dgn

|                           |            |           |
|---------------------------|------------|-----------|
| USER NAME = reema.swaidan | DESIGNED - | REVISED - |
|                           | DRAWN -    | REVISED - |
|                           | CHECKED -  | REVISED - |
| PLOT DATE = 10/31/2025    | DATE -     | REVISED - |

STATE OF ILLINOIS  
DEPARTMENT OF TRANSPORTATION

SUMMARY OF QUANTITIES  
ROUTE FAI 74 (I-74)

SCALE: SHEET 1 OF 1 SHEETS STA. TO STA.

| F.A.I. RTE.               | SECTION                        | COUNTY      | TOTAL SHEETS | SHEET NO. |
|---------------------------|--------------------------------|-------------|--------------|-----------|
| 74                        | (72-7)JL-1;(72(8,9);90-11)JL-2 | PEOR.-TAZE. | 27           | 3         |
| CONTRACT NO. 68K93        |                                |             |              |           |
| ILLINOIS FED. AID PROJECT |                                |             |              |           |

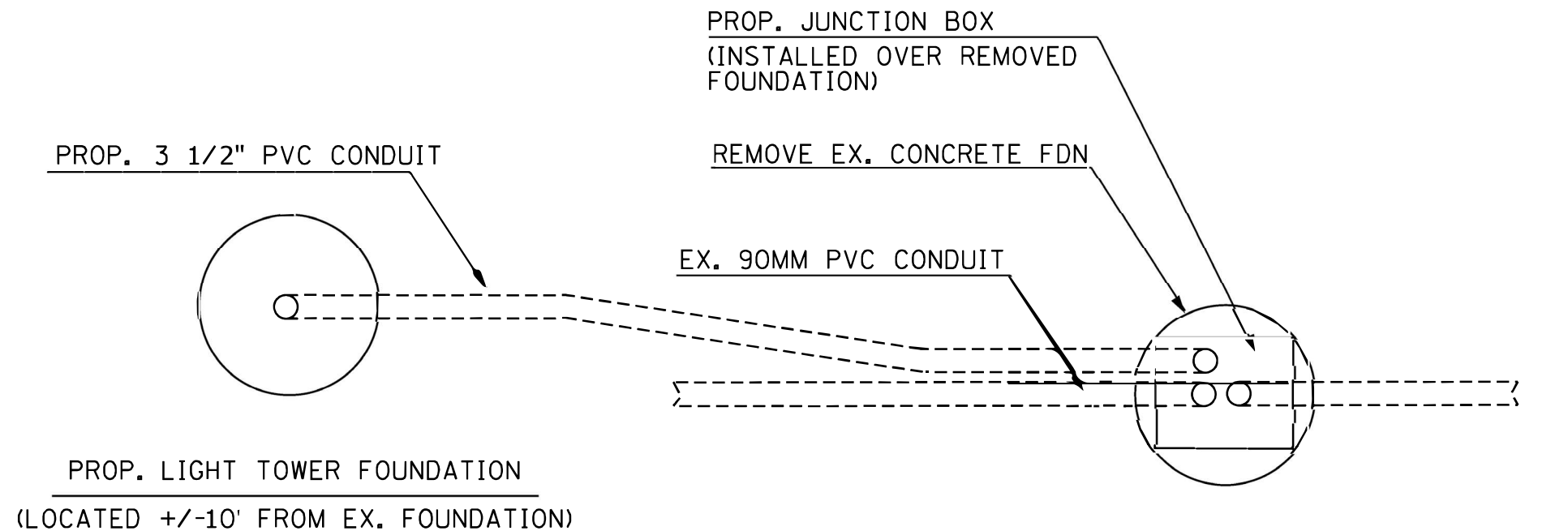
### High Mast Lighting Tower Foundation Replacement

| Location Description   | Structure Number |             | County   | Main Route | Cross Street      | GPS Location |               | Tower Height | Foundation Length (L) | Embedded Shaft Length (D) | Length of Reinf. (X) | Rock Excavation for Structures | Theo Top of Ground Elev. | Boring Log        | Year Installed | Contract |
|------------------------|------------------|-------------|----------|------------|-------------------|--------------|---------------|--------------|-----------------------|---------------------------|----------------------|--------------------------------|--------------------------|-------------------|----------------|----------|
|                        | Structure ID     | Location ID |          |            |                   | Latitude - N | Longitude - W |              |                       |                           |                      |                                |                          |                   |                |          |
| I-74/EXIT 88           | WCD1             | 144         | PEORIA   | I-74       | US 150            | 40.73458     | -89.62240     | 100          | 18.5                  | 16.5                      | 18.0                 |                                | 189.325                  | HMSB 128          | 2005           | 68200    |
| I-74/EXIT 88           | JGH1             | 154         | PEORIA   | I-74       | US 150            | 40.73807     | -89.62341     | 80           | 20.5                  | 18.5                      | 20.0                 |                                | 192.900                  | HMSB 121          | 2005           | 68200    |
| I-74/EXIT 89           | JGH3             | 149         | PEORIA   | I-74       | US 150            | 40.73643     | -89.62427     | 100          | 18.5                  | 16.5                      | 18.0                 |                                | 192.523                  | HMSB 11a          | 2005           | 68200    |
| I-74/EXIT 89           | JCD2             | 160         | PEORIA   | I-74       | US 150            | 40.74121     | -89.62486     | 80           | 24.5                  | 22.5                      | 24.0                 |                                | 193.548                  | HMSB 113          | 2005           | 68200    |
| I-74/EXIT 89           | JCD4             | 163         | PEORIA   | I-74       | US 150            | 40.74184     | -89.62659     | 80           | 18.5                  | 16.5                      | 18.0                 |                                | 192.096                  | HMSB 110          | 2005           | 68200    |
| I-74/I-74 CONNECTOR    | 1CD2             | 053         | TAZEWELL | I-74       | CAMP ST.          | 40.67817     | -89.58503     | 100          | 24.0                  | 22.0                      | 23.5                 |                                | 139.500                  | SB-181            | 2005           | 68195    |
| I-74/I-74 CONNECTOR    | REF1             | 049         | TAZEWELL | I-74       | I-74              | 40.68071     | -89.58109     | 100          | 18.5                  | 16.5                      | 18.0                 |                                | 141.800                  | RWH1-1            | 2005           | 68195    |
| *See Note I-74/EXIT 95 | MCD2             | 031         | TAZEWELL | I-74       | MAIN ST.          | 40.66800     | -89.57246     | 100          | 25.0*                 | 23.0                      | 24.5                 | 4.8                            | 152.789                  | HMSB-93           | 2005           | 68199    |
| *See Note I-74/EXIT 95 | MCD1             | 033         | TAZEWELL | I-74       | MAIN ST.          | 40.66940     | -89.57339     | 100          | 17.5*                 | 15.5                      | 17.0                 | 4.2                            | 147.006                  | SB-300            | 2005           | 68199    |
| I-74/EXIT 96           | WEF2             | 022         | TAZEWELL | I-74       | E. WASHINGTON ST. | 40.66199     | -89.56908     | 100          | 24.0                  | 22.0                      | 23.5                 |                                | 147.007                  | HMSB-102A         | 2005           | 68199    |
| I-74/EXIT 95           | JAB1             | 036         | TAZEWELL | I-74       | MAIN ST.          | 40.67098     | -89.57373     | 100          | 25.0                  | 23.0                      | 24.5                 |                                | 146.451                  | HMSB-089A, SB-235 | 2005           | 68201    |
| *See Note I-74/EXIT 95 | JEF2             | 185         | TAZEWELL | I-74       | CAMP ST.          | 40.66697     | -89.57092     | 100          | 26.5                  | 24.5                      | 24.0                 | 2.5                            | 149.033                  | SB-272            | 2005           | 68201    |

\* NOTE PRESENCE OF SHALE AND SANDSTONE IN SOIL BORINGS.  
 COST OF DRILLING INTO ROCK PAID FOR AS "ROCK EXCAVATION FOR STRUCTURES"

MCDP - Rethink  
 FILE NAME: 0310000210001.DWG

|                                      |          |         |   |                               |  |          |                              |                    |              |           |  |
|--------------------------------------|----------|---------|---|-------------------------------|--|----------|------------------------------|--------------------|--------------|-----------|--|
| USER NAME = mitch                    | DESIGNED | REVISED | <b>STATE OF ILLINOIS<br/>DEPARTMENT OF TRANSPORTATION</b> | <b>SCHEDULE OF QUANTITIES</b> |  | RTE.     | SECTION                      | COUNTY             | TOTAL SHEETS | SHEET NO. |  |
| PLOT SCALE = 100:0.0000 " = 1" / in. | DRAWN    | REVISED |   |                               |  | FAI 74   | (72-7)I-1,(72(8,9);90-11)I-2 | PEO-TAZ            | 27           | 4         |  |
| PLOT DATE = 3/20/2023                | CHECKED  | REVISED |   | SCALE: NONE                   |  | SHEET 1  | 2                            | CONTRACT NO. 68K93 |              |           |  |
|                                      | DATE     | REVISED |   |                               |  | ILLINOIS |                              |                    |              |           |  |



- EX. LIGHT TOWER FOUNDATION
- 3 FT. PARTIAL REMOVAL DEPTH
  - ALL CONDUITS TO BE ORIENTED AT 90 DEGREES UP INSIDE JUNCTION BOX
  - SPLICE PROPOSED WIRING INTO EX. LIGHTING CIRCUIT INSIDE JUNCTION BOX

|   |                              |            |           |
|---|------------------------------|------------|-----------|
| FILE NAME =                               | USER NAME = aubreygs         | DESIGNED - | REVISED - |
| 68B88 - High Mast Lighting Repair (Final) | 4-19-14.dwg                  | DRAWN -    | REVISED - |
|   | PLOT SCALE = 164.7568' / in. | CHECKED -  | REVISED - |
|   | PLOT DATE = 4/18/2014        | DATE -     | REVISED - |

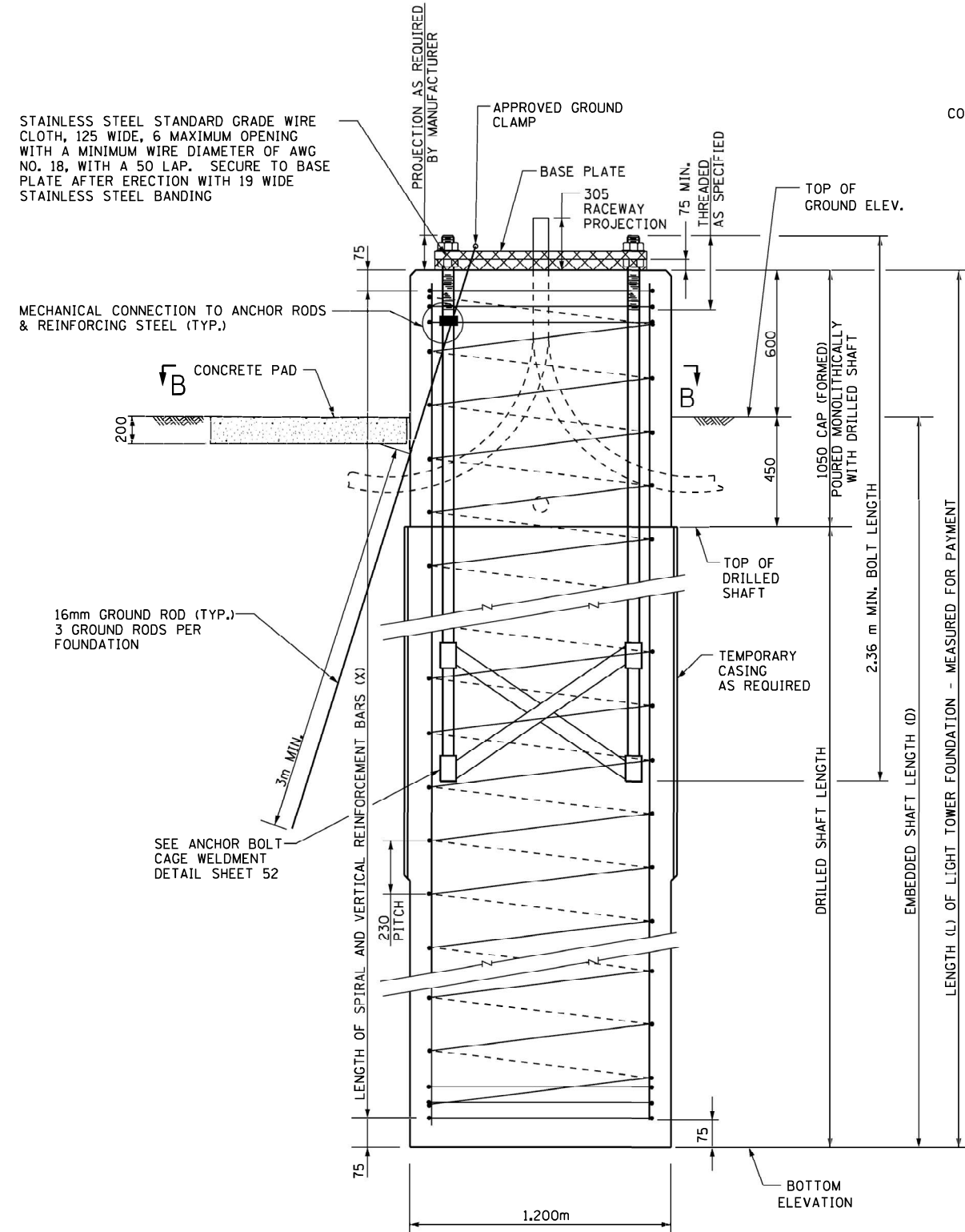
**STATE OF ILLINOIS  
DEPARTMENT OF TRANSPORTATION**

**TYPICAL FOUNDATION REPLACEMENT DETAIL**

SCALE: \_\_\_\_\_ STA. \_\_\_\_\_ TO STA. \_\_\_\_\_

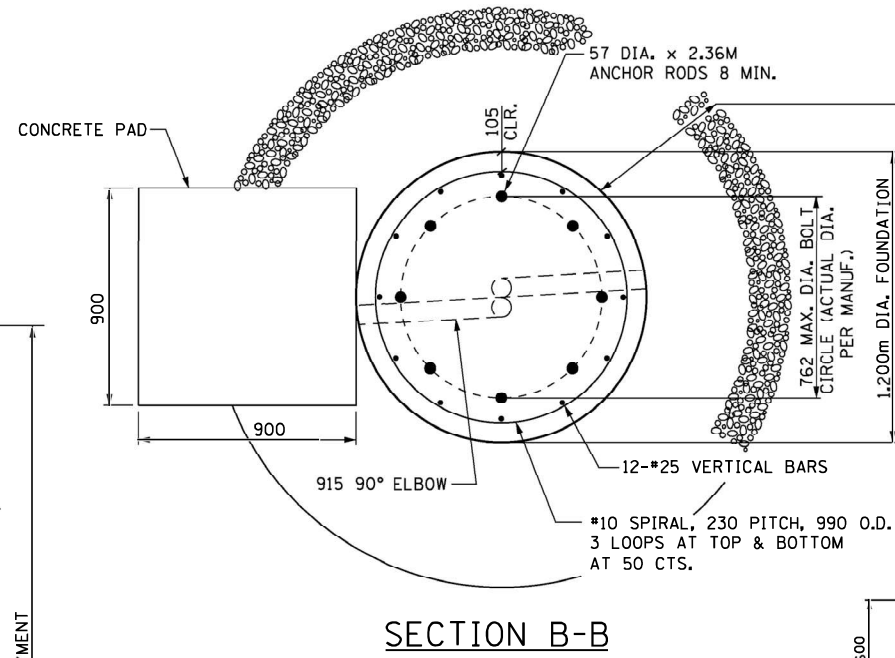
|                                 |                 |                          |
|---------------------------------|-----------------|--------------------------|
| SECTION                         | COUNTY          | TOTAL SHEET SHEETS   NO. |
| 74 (72-7)L-1;(72(8,9);90-11 L-2 | PEORIA-TAZEWELL | 27   5                   |
| CONTRACT NO. 68K93              |                 |                          |
| ILLINOIS FED. AID PROJECT       |                 |                          |

NOTE THAT DIMENSIONS ARE IN METRIC UNITS CONSISTENT WITH ORIGINAL INSTALLATION

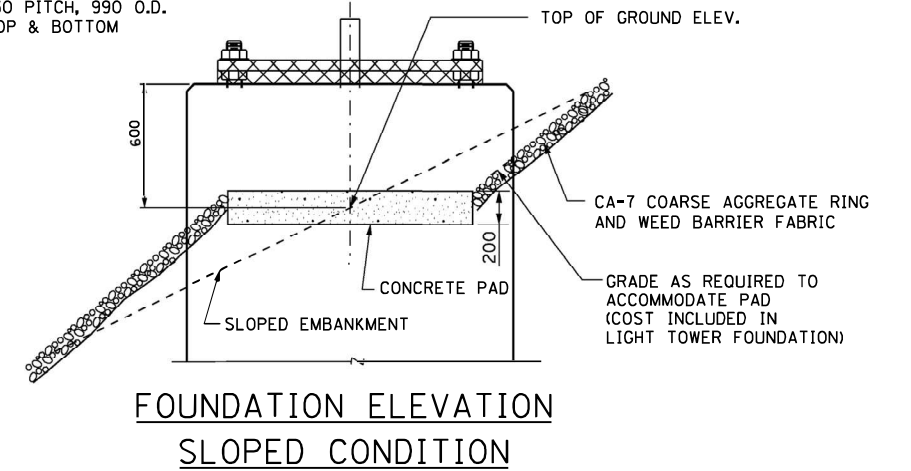


NOTE: NUTS SHALL BE TIGHTENED AGAINST THE BASE PLATE WITH 271 Nm MINIMUM TORQUE.

FOUNDATION ELEVATION



SECTION B-B



FOUNDATION ELEVATION SLOPED CONDITION

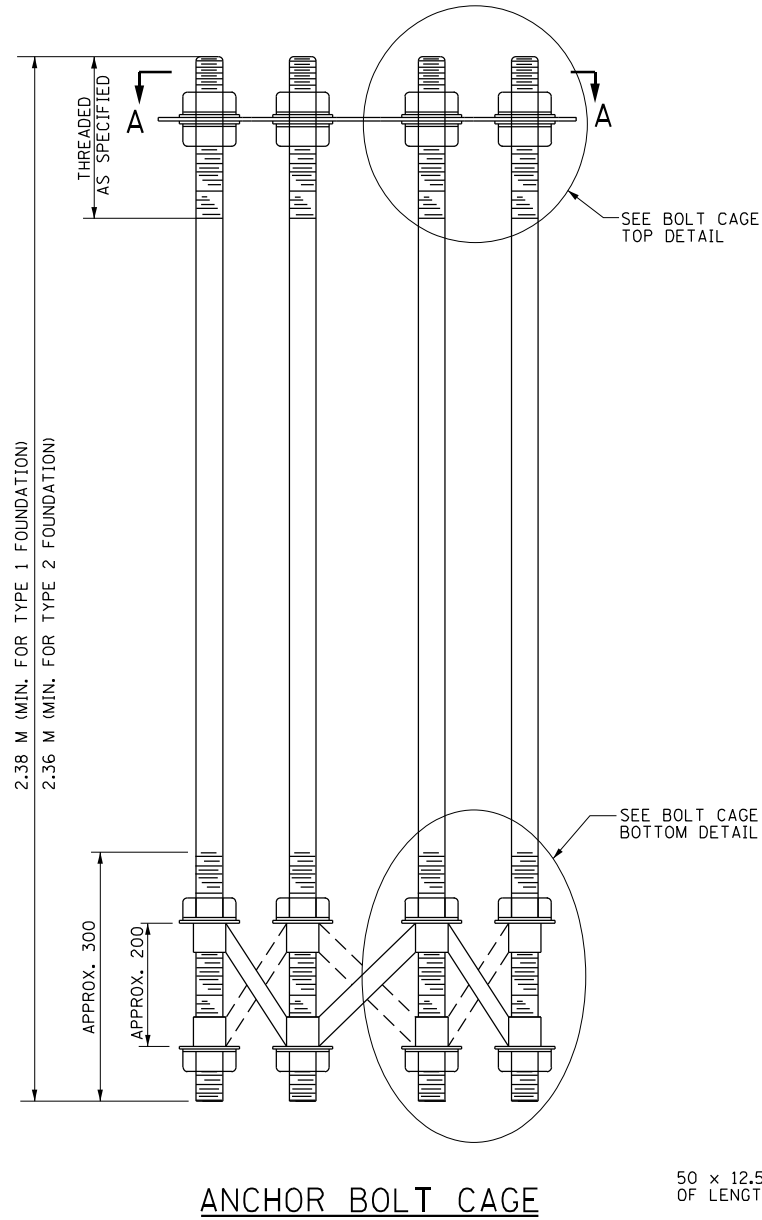
| LIGHT TOWER FOUNDATION (TYPE 2 IN-FIELD) |         |        |           |                                 |                                    |                                |            |                      |  |  |
|--|---------|--------|-----------|---------------------------------|------------------------------------|--------------------------------|------------|----------------------|--|--|
| HIGH MAST TOWER LOCATION                 |         |        |           | THEORETICAL TOP OF GROUND ELEV. | EMBEDDED SHAFT LENGTH (D) (METERS) | TOWER FDN. LENGTH (L) (METERS) | BORING LOG | LENGTH (X) OF REINF. | LOCATION DETAILS ON SCHEDULE OF QUANTITIES SHEET |  |
| POLE ID                                  | STATION | OFFSET | BASE LINE |                                 |                                    |                                |            |                      |  |  |
|  |         |        |           |                                 |                                    |                                |            |                      |  |  |

NOTES:

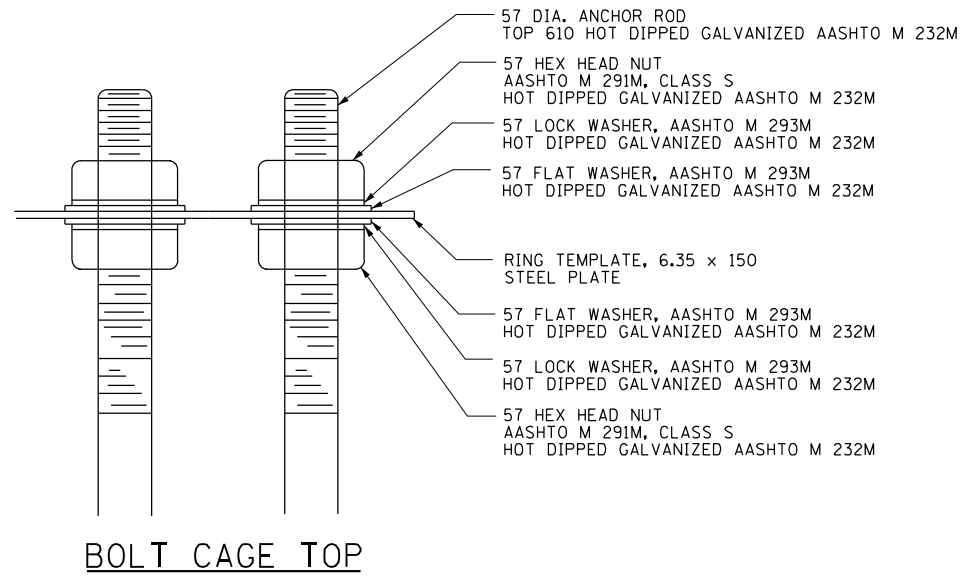
THE COST OF THE GROUND RODS AND GROUND ROD CLAMPS SHALL BE INCLUDED IN THE LIGHT TOWER FOUNDATION PAY ITEM. THREE GROUND RODS ARE REQUIRED AT EACH LOCATION.

|   |                     |            |           |   |  |                           |                       |         |                    |     |  |
|---|---------------------|------------|-----------|---|--|---------------------------|-----------------------|---------|--------------------|-----|--|
| FILE NAME = 68898 - High Mast Lighting Repair (Final) | USER NAME = aubrags | DESIGNED - | REVISED - | STATE OF ILLINOIS<br>DEPARTMENT OF TRANSPORTATION | LIGHT TOWER FOUNDATION DETAIL<br>(TYPE 2 IN-FIELD) | FAI                       | SECTION               | COUNTY  | TOTAL SHEET SHEETS | NO. |  |
|   |                     | DRAWN -    | REVISED - |   |  | 74                        | (72-7)L-1;(72(8,9);90 | PEO-TAZ | 27                 | 6   |  |
|   |                     | CHECKED -  | REVISED - |   |  | CONTRACT NO. 68K93        |                       |         |                    |     |  |
|   |                     | DATE -     | REVISED - |   |  | ILLINOIS FED. AID PROJECT |                       |         |                    |     |  |

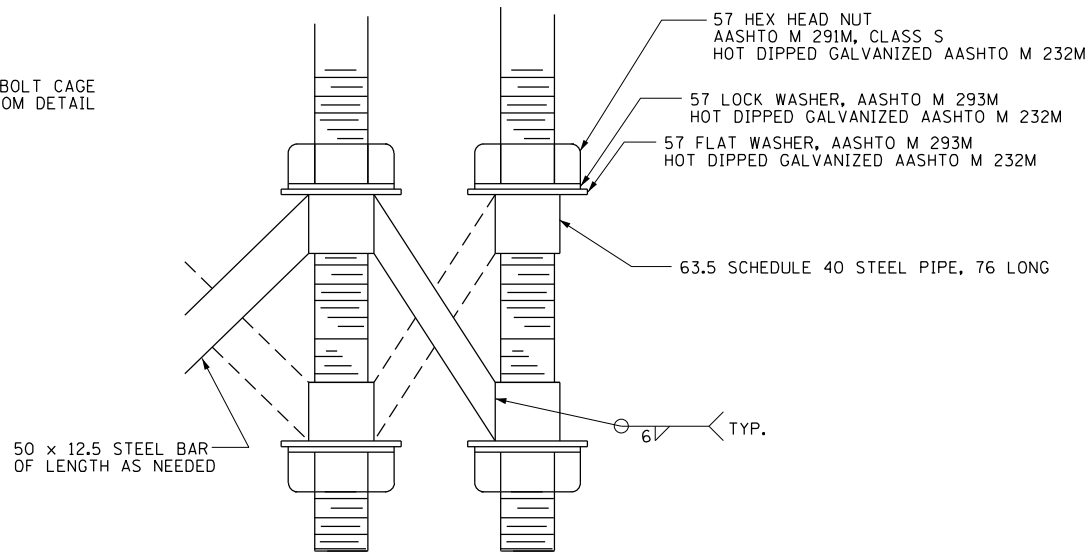
NOTE THAT DIMENSIONS ARE IN METRIC UNITS CONSISTENT WITH ORIGINAL INSTALLATION



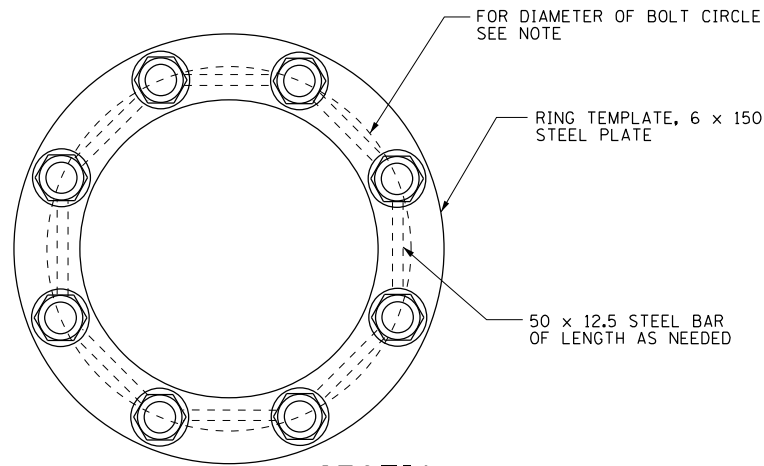
ANCHOR BOLT CAGE



BOLT CAGE TOP



BOLT CAGE BOTTOM

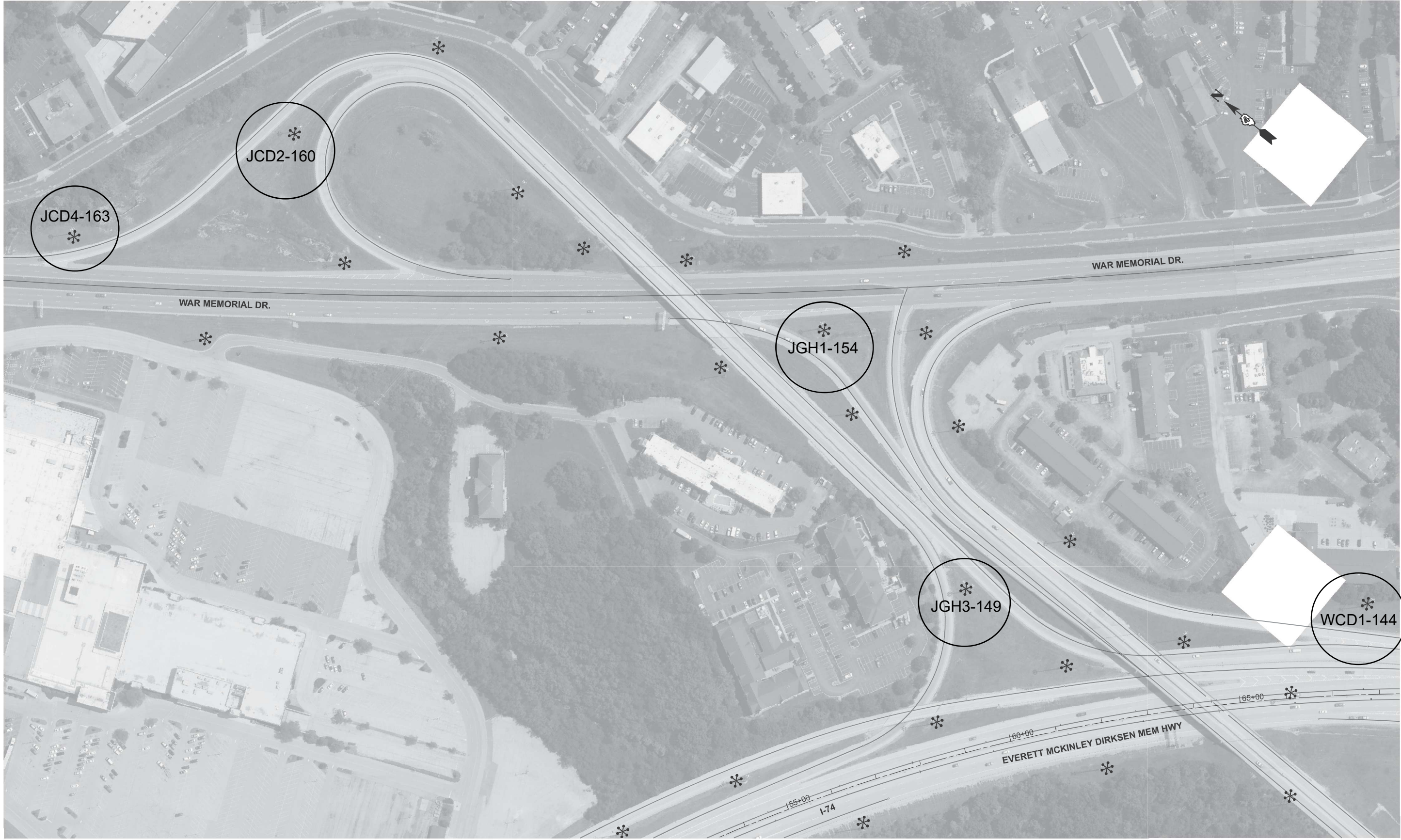


SECTION A-A

NOTE: CONTRACTOR SHALL VERIFY AND FULLY COORDINATE THE PROPOSED FOUNDATION'S ANCHOR BOLT SIZE, LENGTH, AND CIRCLE DIAMETER WITH THE HIGH MAST TOWER MANUFACTURER'S ANCHOR BOLT CIRCLE.

FOUNDATION NOTES

|   |                     |                  |                 |   |   |                           |                      |                 |             |   |
|---|---------------------|------------------|-----------------|---|---|---------------------------|----------------------|-----------------|-------------|---|
| FILE NAME = 68888 - High Mast Lighting Repair (Final 1-19-14).dgn | USER NAME = aubreys | DESIGNED - _____ | REVISED - _____ | <b>STATE OF ILLINOIS<br/>DEPARTMENT OF TRANSPORTATION</b> | <b>LIGHT TOWER FOUNDATION NOTES<br/>AND ANCHOR BOLT DETAILS</b> | FAI                       | SECTION              | COUNTY          | TOTAL SHEET |   |
| PLOT SCALE = 164.7568' / in.                                      | CHECKED - _____     | REVISED - _____  | REVISED - _____ |   |   | 74                        | (72-7)L-1;72(8,9);90 | PEORIA-TAZEWELL | 27          | 7 |
| PLOT DATE = 4/18/2014   | DATE - _____        | REVISED - _____  | REVISED - _____ |   |   | CONTRACT NO. 68K93        |                      |                 |             |   |
|   |                     |                  |                 |   |   | ILLINOIS FED. AID PROJECT |                      |                 |             |   |



MODEL: Unnamed Plan - Plan 1 [Sheet]  
 FILE NAME: c:\p\work\wv\illinois.gov\11754688\ID468K93-shr-plan.dgn



|                           |            |           |
|---------------------------|------------|-----------|
| USER NAME = reema.swaidan | DESIGNED - | REVISED - |
|                           | DRAWN -    | REVISED - |
|                           | CHECKED -  | REVISED - |
| PLOT DATE = 10/31/2025    | DATE -     | REVISED - |

**STATE OF ILLINOIS  
DEPARTMENT OF TRANSPORTATION**

**LIGHT TOWER FOUNDATION REPLACEMENT  
I-74 & US 150**

SCALE: 1"=100' SHEET 1 OF 6 SHEETS STA. 28+00.00 TO STA. 58+00.00

| F.A.I RTE.                | SECTION                      | COUNTY      | TOTAL SHEETS | SHEET NO. |
|---------------------------|------------------------------|-------------|--------------|-----------|
| 74                        | (72-7)I-1;(72(8,9);90-11)I-2 | PEOR.-TAZE. | 27           | 8         |
| CONTRACT NO. 68K93        |                              |             |              |           |
| ILLINOIS FED. AID PROJECT |                              |             |              |           |



MODEL: Unnamed Plan - Plan 3 (Sheet)  
 FILE NAME: c:\p\work\wis\illinois.gov\_reema.sweidan@d1175688d468k93-shr-plan.dgn



|                           |            |           |
|---------------------------|------------|-----------|
| USER NAME = reema.sweidan | DESIGNED - | REVISED - |
|                           | DRAWN -    | REVISED - |
|                           | CHECKED -  | REVISED - |
| PLOT DATE = 10/31/2025    | DATE -     | REVISED - |

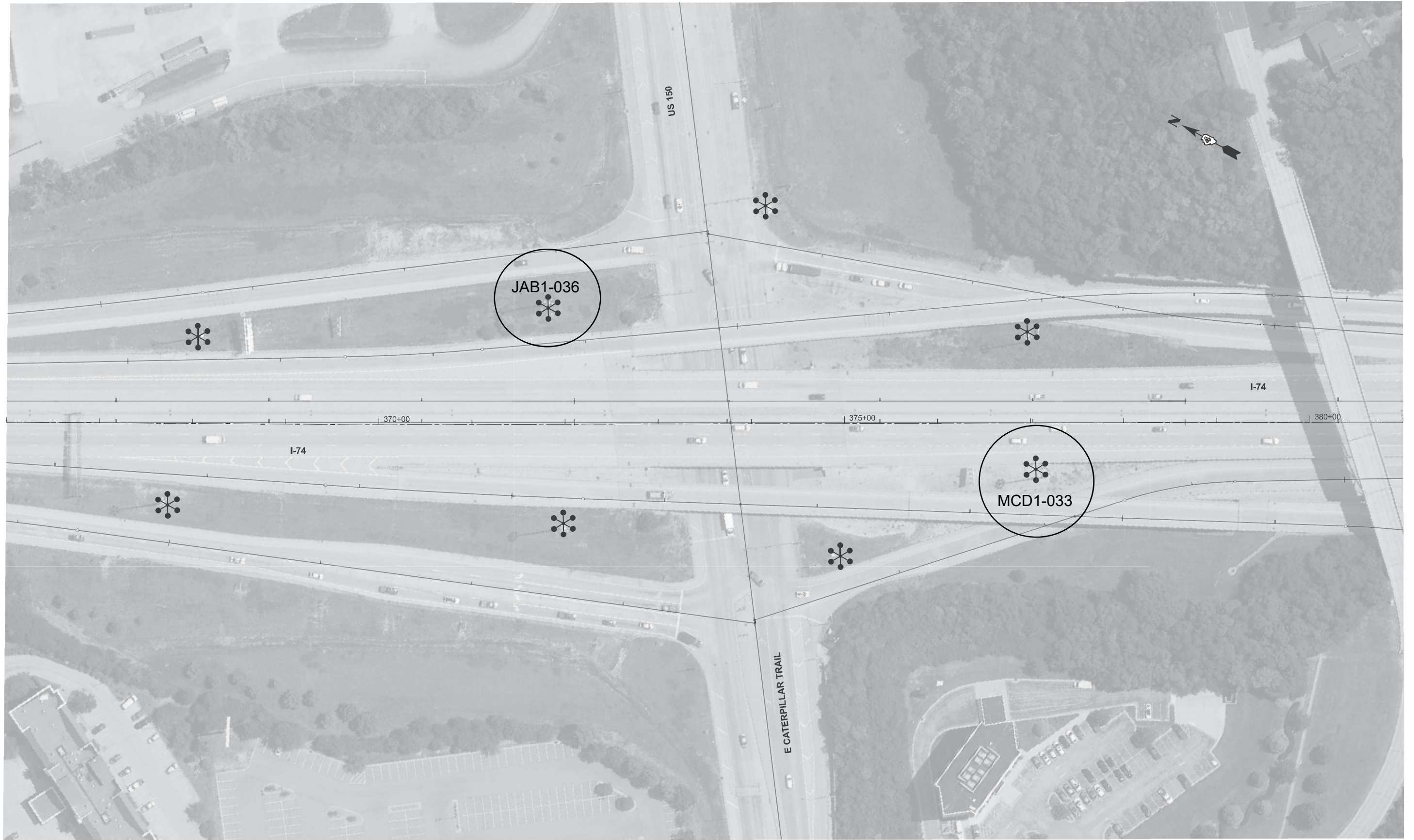
**STATE OF ILLINOIS  
 DEPARTMENT OF TRANSPORTATION**

**LIGHT TOWER FOUNDATION REPLACEMENT  
 I-74 WB ENTRANCE RAMP H-4 (FROM RIVERFRONT DRIVE)**

SCALE: 1"=50' SHEET 3 OF 6 SHEETS STA. 1+62.48 TO STA. 16+62.48

| F.A.I<br>RTE.             | SECTION                      | COUNTY      | TOTAL<br>SHEETS | SHEET<br>NO. |
|---------------------------|------------------------------|-------------|-----------------|--------------|
| 74                        | (72-7)L-1;(72(8,9);90-11)L-2 | PEOR.-TAZE. | 27              | 9            |
| CONTRACT NO. 68K93        |                              |             |                 |              |
| ILLINOIS FED. AID PROJECT |                              |             |                 |              |

NOTE THAT DIMENSIONS ARE IN METRIC UNITS CONSISTENT WITH ORIGINAL INSTALLATION



MODEL: EXCL25-Plan 4 (Sheet)  
 FILE NAME: c:\p\work\pav\illinois.gov\1175688\ID468K93-shr-plan.dgn



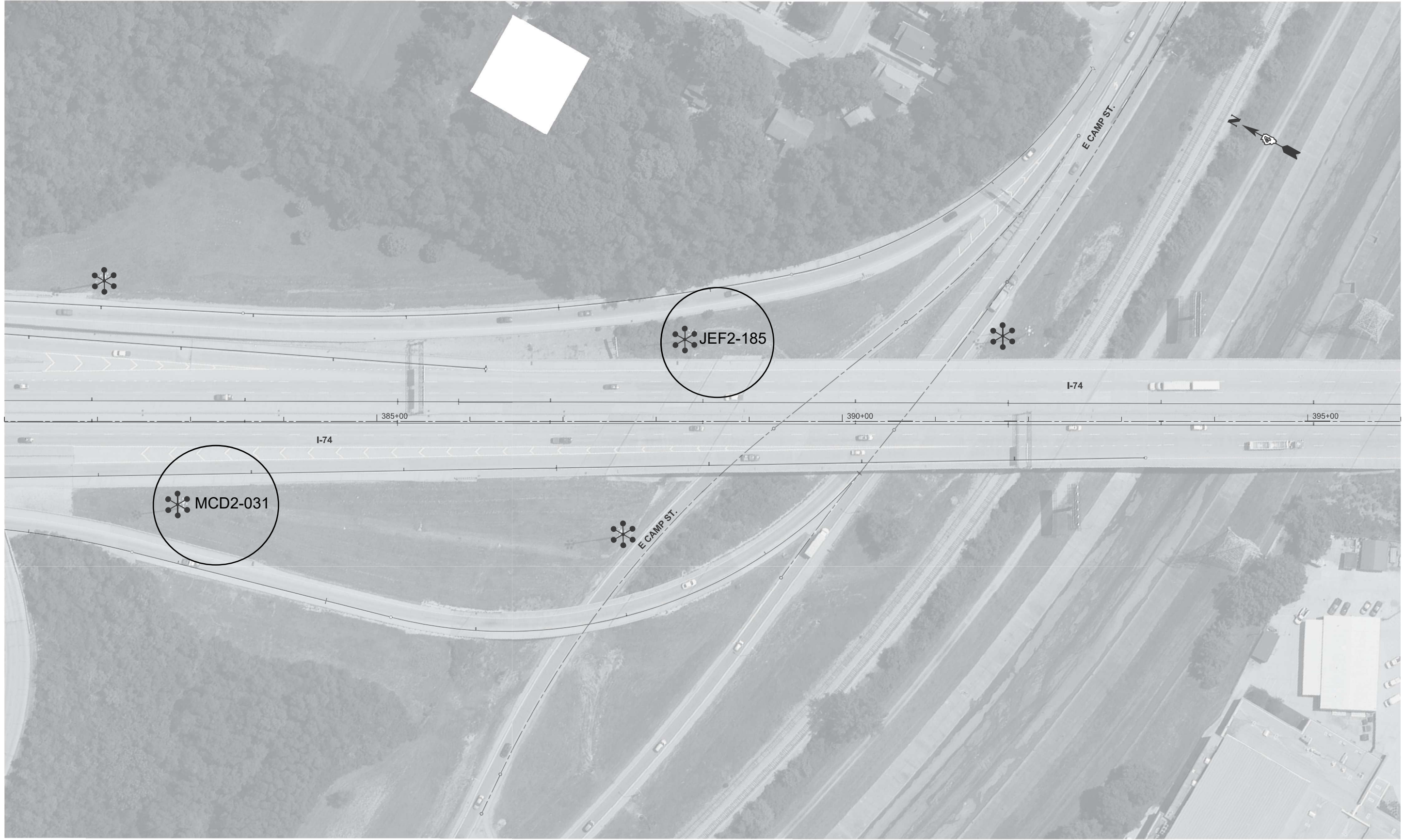
|                           |            |           |
|---------------------------|------------|-----------|
| USER NAME = reema.swaidan | DESIGNED - | REVISED - |
|                           | DRAWN -    | REVISED - |
|                           | CHECKED -  | REVISED - |
| PLOT DATE = 10/31/2025    | DATE -     | REVISED - |

**STATE OF ILLINOIS  
 DEPARTMENT OF TRANSPORTATION**

**LIGHT TOWER FOUNDATION REPLACEMENT  
 I-74 & MAIN ST.**

SCALE: 1"=50' SHEET 4 OF 6 SHEETS STA. 366+00.00 TO STA. 381+00.00

| F.A.I<br>RTE.             | SECTION                      | COUNTY      | TOTAL<br>SHEETS | SHEET<br>NO. |
|---------------------------|------------------------------|-------------|-----------------|--------------|
| 74                        | (72-7)I-1;[72(8,9);90-11]I-2 | PEOR.-TAZE. | 27              | 10           |
| CONTRACT NO. 68K93        |                              |             |                 |              |
| ILLINOIS FED. AID PROJECT |                              |             |                 |              |



MODEL: EXCL25- Plan 5 (Sheet)  
 FILE NAME: c:\p\work\project\illinois.gov\1175688\ID68K93-shr-plan.dgn



|                           |            |           |
|---------------------------|------------|-----------|
| USER NAME = reema.swaidan | DESIGNED - | REVISED - |
|                           | DRAWN -    | REVISED - |
|                           | CHECKED -  | REVISED - |
| PLOT DATE = 10/31/2025    | DATE -     | REVISED - |

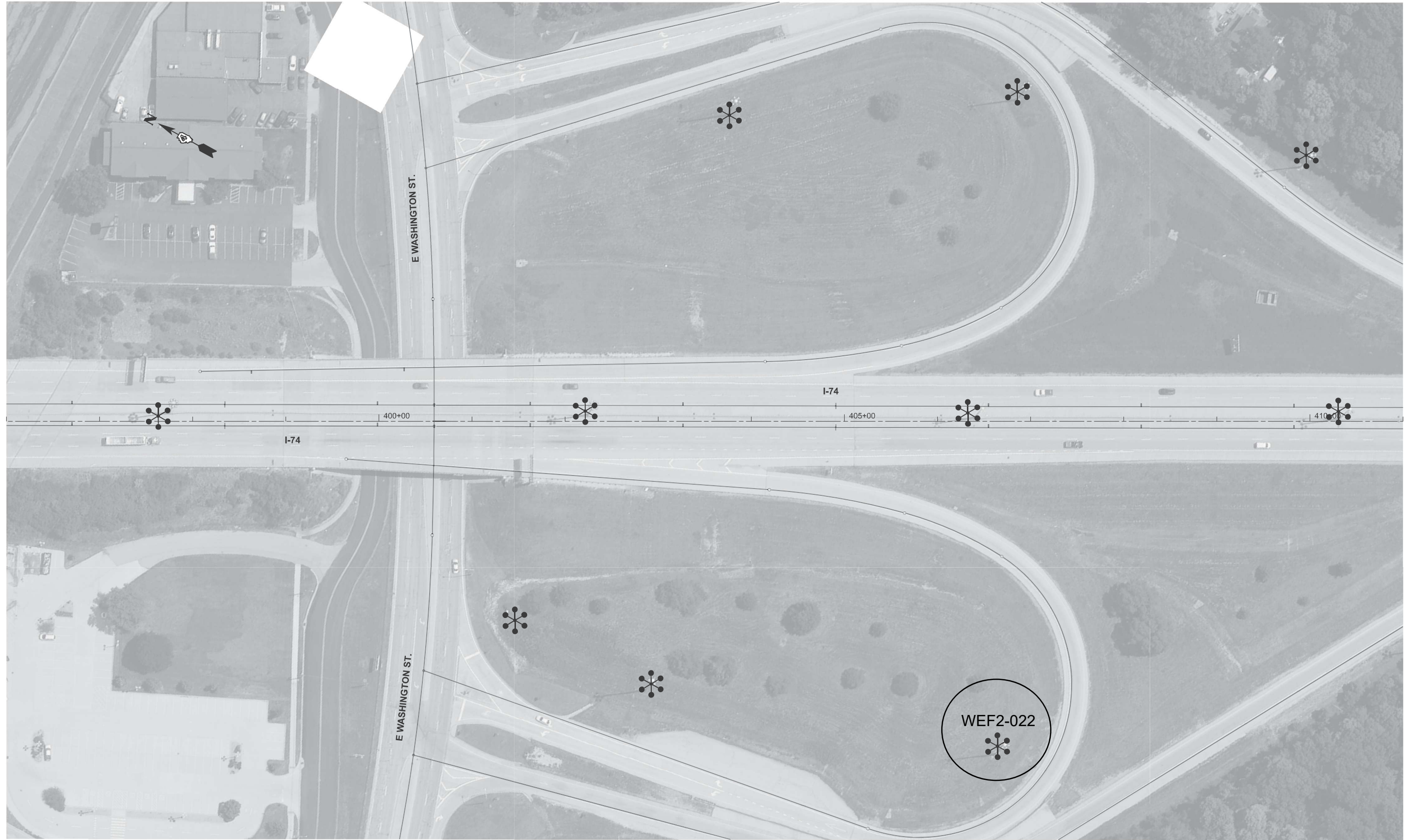
**STATE OF ILLINOIS**  
**DEPARTMENT OF TRANSPORTATION**

**LIGHT TOWER FOUNDATION REPLACEMENT**  
**I-74 & CAMP ST.**

SCALE: 1"=50'    SHEET 5    OF 6    SHEETS    STA. 381+00.00    TO STA. 396+00.00

| F.A.I RTE.                | SECTION                      | COUNTY      | TOTAL SHEETS | SHEET NO. |
|---------------------------|------------------------------|-------------|--------------|-----------|
| 74                        | (72-7)L-1;(72(8,9);90-11)L-2 | PEOR.-TAZE. | 27           | 11        |
| CONTRACT NO. 68K93        |                              |             |              |           |
| ILLINOIS FED. AID PROJECT |                              |             |              |           |

NOTE THAT DIMENSIONS ARE IN METRIC UNITS CONSISTENT WITH ORIGINAL INSTALLATION



MODEL: EXCL25-Plan 6 (Sheet)  
 FILE NAME: c:\p\work\p25\illinois.gov\_reema.sweidan@d1175688\ID468K93-shr-plan.dgn



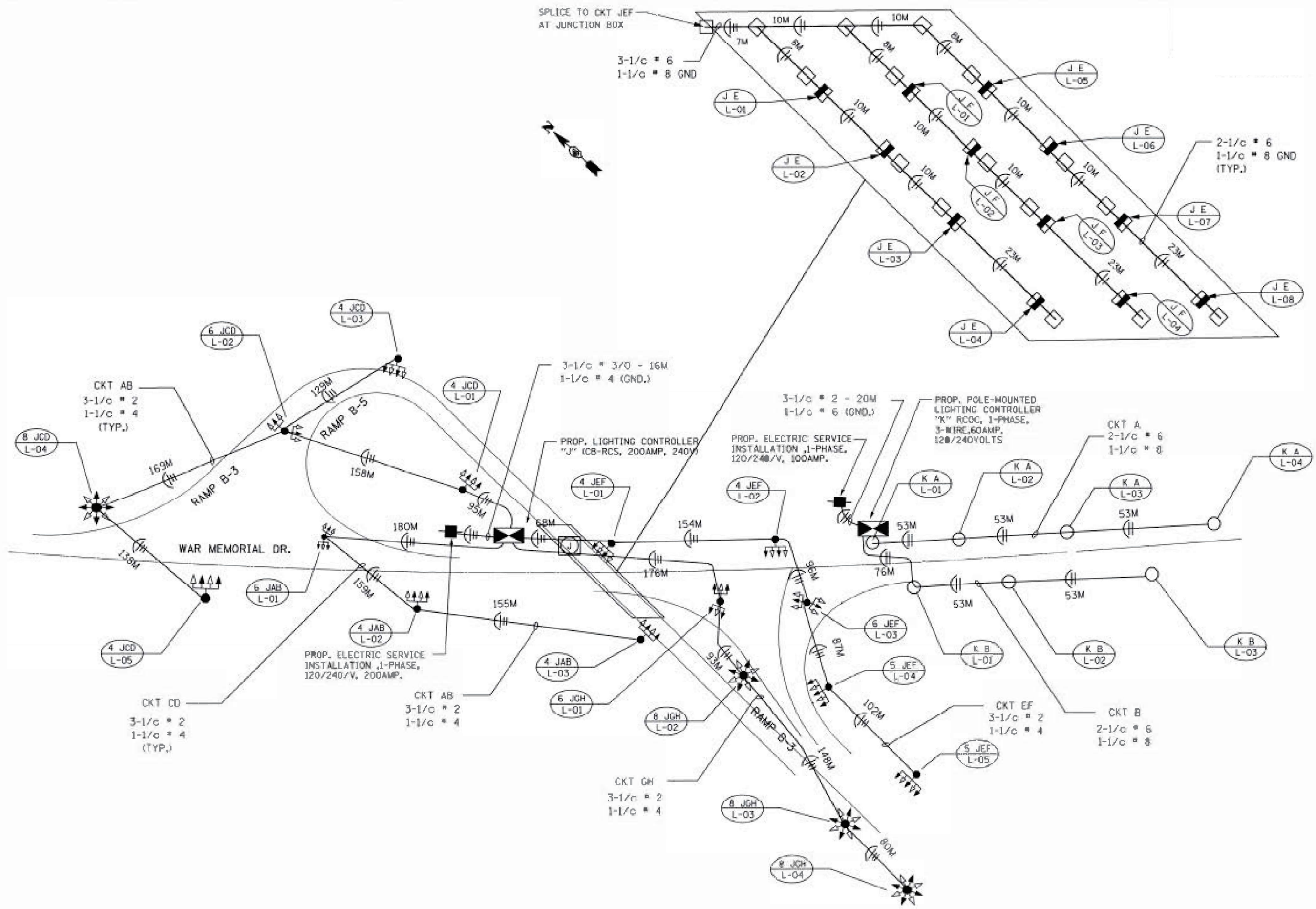
|                           |            |           |
|---------------------------|------------|-----------|
| USER NAME = reema.sweidan | DESIGNED - | REVISED - |
|                           | DRAWN -    | REVISED - |
|                           | CHECKED -  | REVISED - |
| PLOT DATE = 10/31/2025    | DATE -     | REVISED - |

**STATE OF ILLINOIS  
 DEPARTMENT OF TRANSPORTATION**

**LIGHT TOWER FOUNDATION REPLACEMENT  
 I-74 & WASHINGTON ST.**

SCALE: 1"=50' SHEET 6 OF 6 SHEETS STA. 396+00.00 TO STA. 411+00.00

| F.A.I<br>RTE.             | SECTION                      | COUNTY      | TOTAL<br>SHEETS | SHEET<br>NO. |
|---------------------------|------------------------------|-------------|-----------------|--------------|
| 74                        | (72-7)L-1;(72(8,9);90-11)L-2 | PEOR.-TAZE. | 27              | 12           |
| CONTRACT NO. 68K93        |                              |             |                 |              |
| ILLINOIS FED. AID PROJECT |                              |             |                 |              |



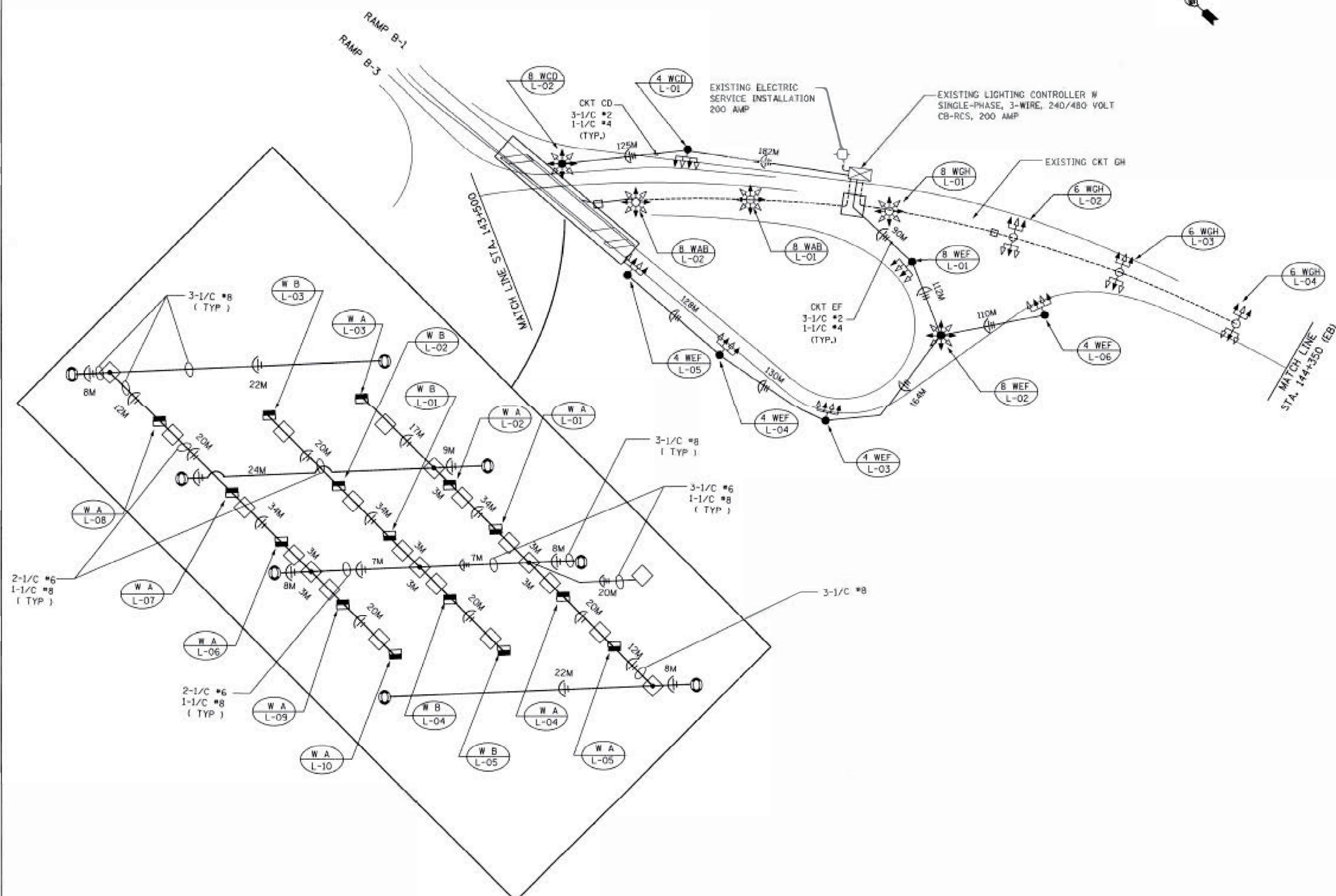
MODEL: Detail (Sheet) - 1  
 FILE NAME: c:\pwworking\illinois.gov\_reema.sweidan\illinois.gov\d1175680\68K93-sh-Details.dgn

|                           |            |           |
|---------------------------|------------|-----------|
| USER NAME = reema.sweidan | DESIGNED - | REVISED - |
|                           | DRAWN -    | REVISED - |
|                           | CHECKED -  | REVISED - |
| PLOT DATE = 10/31/2025    | DATE -     | REVISED - |

**STATE OF ILLINOIS**  
**DEPARTMENT OF TRANSPORTATION**

|                                      |             |
|--------------------------------------|-------------|
| <b>WIRING PLAN</b>                   |             |
| <b>I-74 &amp; WAR MEMORIAL DRIVE</b> |             |
| SCALE:                               | TO STA.     |
| SHEET 1                              | OF 6 SHEETS |

|                             |                              |             |              |           |
|-----------------------------|------------------------------|-------------|--------------|-----------|
| F.A.I. RTE.                 | SECTION                      | COUNTY      | TOTAL SHEETS | SHEET NO. |
| 74                          | (72-7)L-1;(72(8,9);90-11)L-2 | PEOR.-TAZE. | 27           | 13        |
| CONTRACT NO. 68K93          |                              |             |              |           |
| ILLINOIS   FED. AID PROJECT |                              |             |              |           |



MODEL: Detail (Sheet) - 2  
 FILE NAME: c:\pwworking\illinois.gov\_reema.sweidan\illinois.gov\d1175686\68K93-sh-Details.dgn

|                           |            |           |
|---------------------------|------------|-----------|
| USER NAME = reema.sweidan | DESIGNED - | REVISED - |
|                           | DRAWN -    | REVISED - |
|                           | CHECKED -  | REVISED - |
| PLOT DATE = 10/31/2025    | DATE -     | REVISED - |

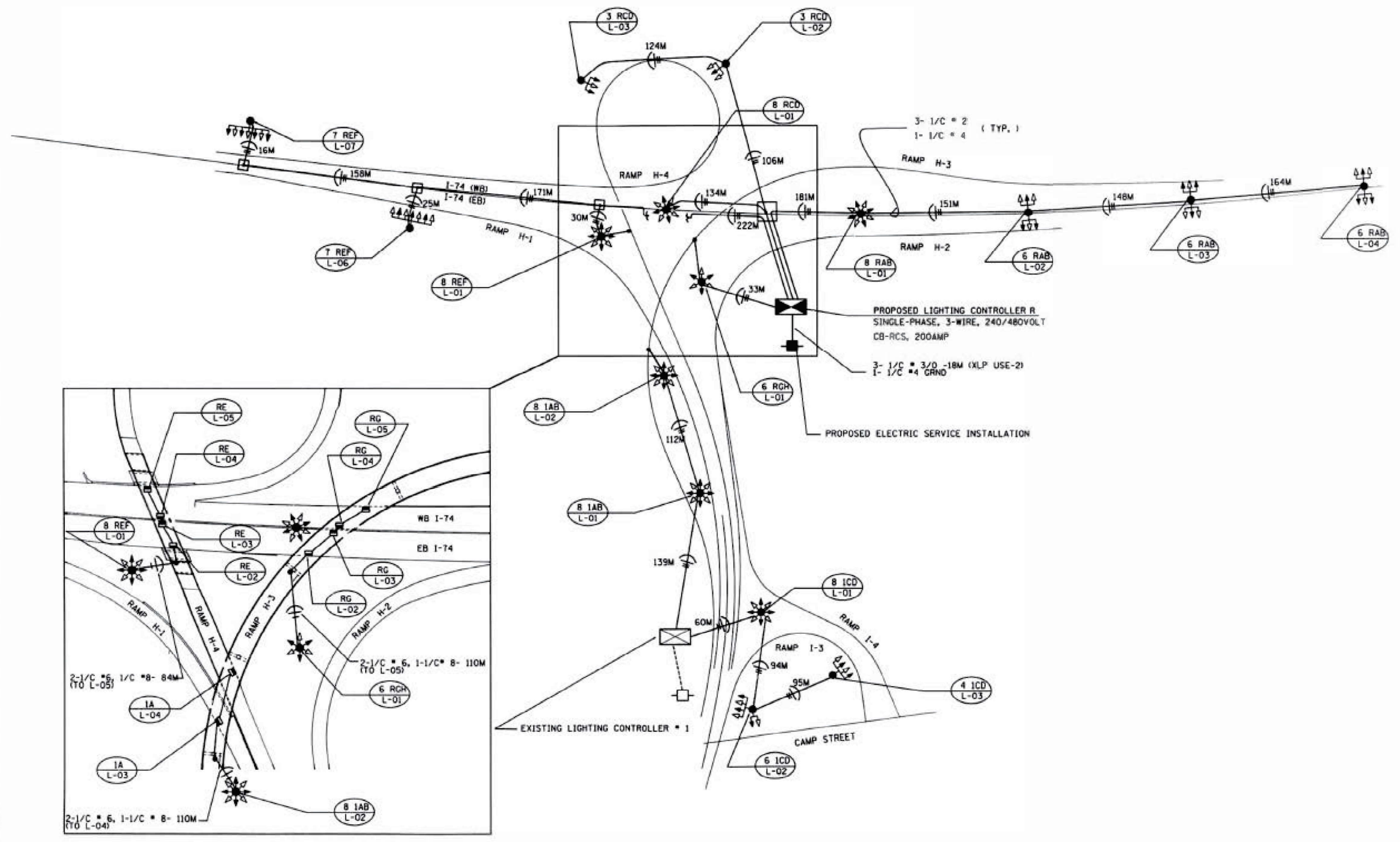
**STATE OF ILLINOIS**  
**DEPARTMENT OF TRANSPORTATION**

**WIRING PLAN**  
**I-74**

SCALE: SHEET 2 OF 6 SHEETS STA. TO STA.

| F A I RTE.                | SECTION                      | COUNTY      | TOTAL SHEETS       | SHEET NO. |
|---------------------------|------------------------------|-------------|--------------------|-----------|
| 74                        | (72-7)L-1;(72(8,9);90-11)L-2 | PEOR.-TAZE. | 27                 | 14        |
|                           |                              |             | CONTRACT NO. 68K93 |           |
| ILLINOIS FED. AID PROJECT |                              |             |                    |           |

MODEL: Detail (Sheet) - 4  
 FILE NAME: c:\pwworking\illinois.gov\1175498\0468K93-shr-Details.dgn



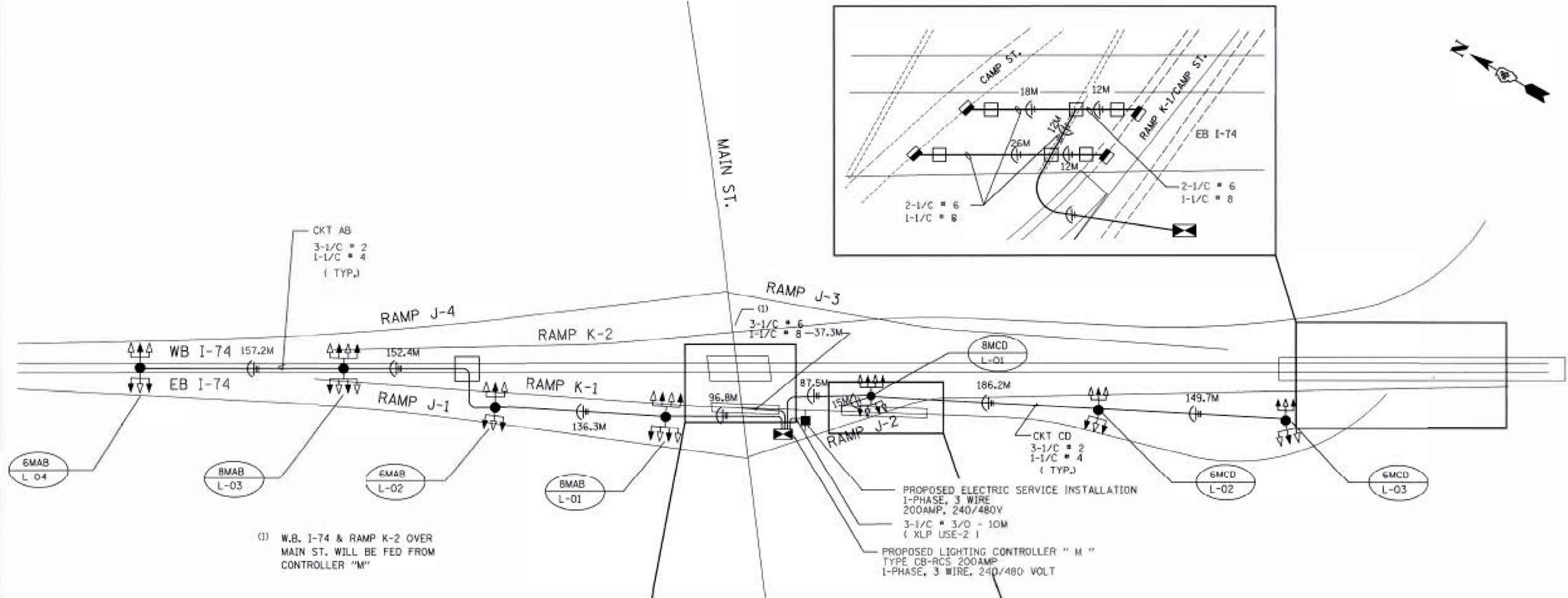
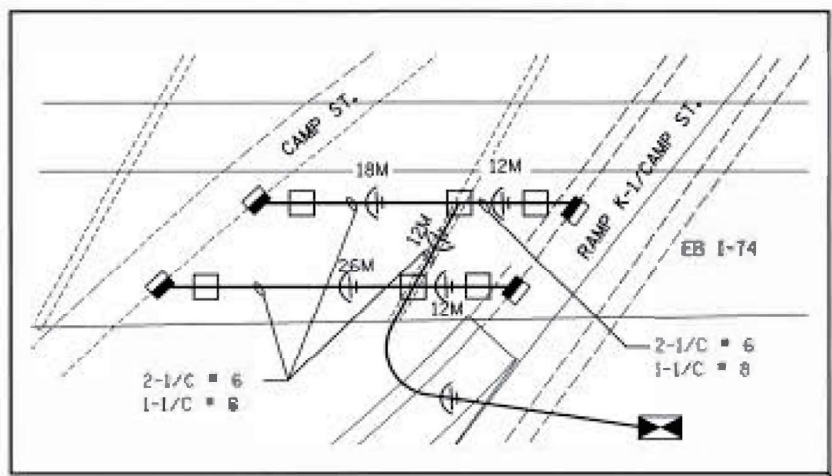
|                           |            |           |
|---------------------------|------------|-----------|
| USER NAME = reema.sweidan | DESIGNED - | REVISED - |
|                           | DRAWN -    | REVISED - |
|                           | CHECKED -  | REVISED - |
| PLOT DATE = 10/31/2025    | DATE -     | REVISED - |

STATE OF ILLINOIS  
 DEPARTMENT OF TRANSPORTATION

WIRING PLAN  
 I-74 & RIVERFRONT DRIVE

SCALE: SHEET 4 OF 6 SHEETS STA. TO STA.

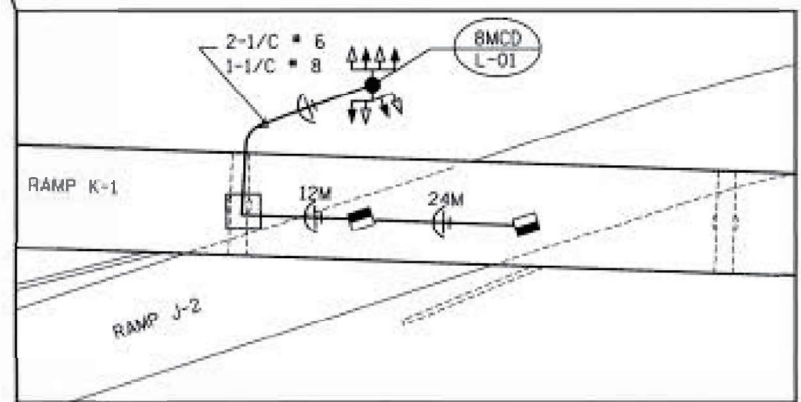
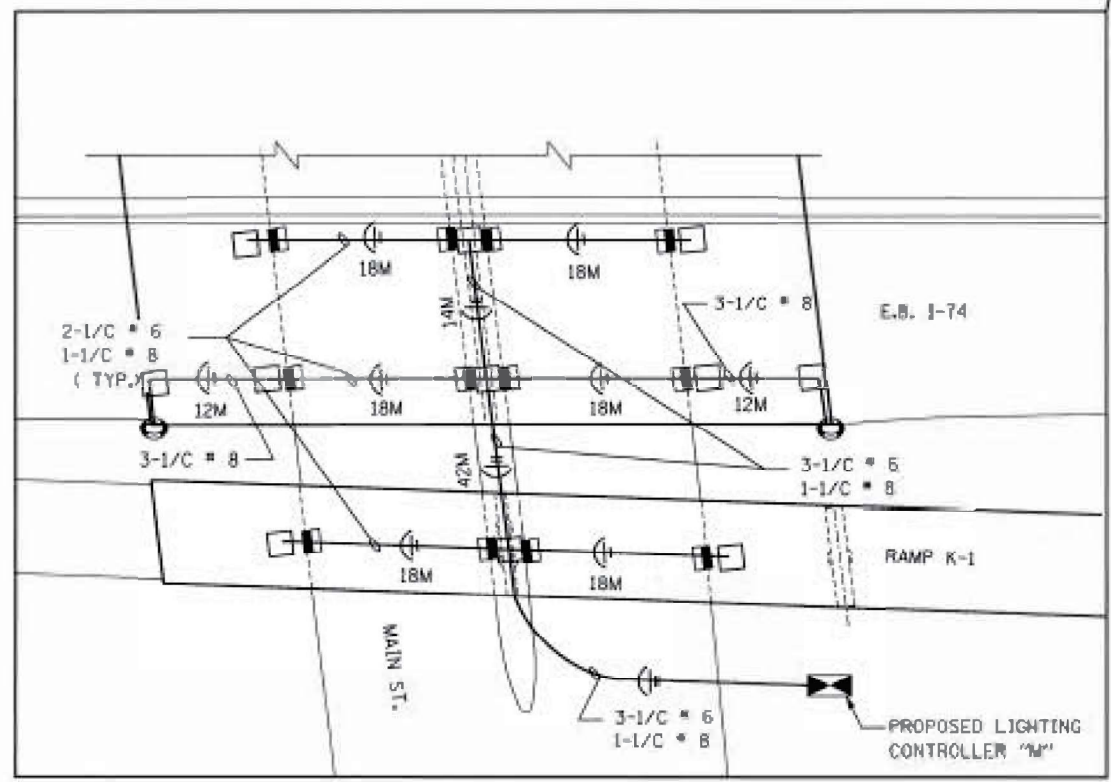
| F A I                     | SECTION                      | COUNTY      | TOTAL SHEETS       | SHEET NO. |
|---------------------------|------------------------------|-------------|--------------------|-----------|
| 74                        | (72-7)L-1;(72(8,9);90-11)L-2 | PEOR.-TAZE. | 27                 | 15        |
|                           |                              |             | CONTRACT NO. 68K93 |           |
| ILLINOIS FED. AID PROJECT |                              |             |                    |           |



(1) W.B. I-74 & RAMP K-2 OVER MAIN ST. WILL BE FED FROM CONTROLLER "M"

PROPOSED ELECTRIC SERVICE INSTALLATION  
 1-PHASE, 3 WIRE  
 200AMP, 240/480V  
 3-1/C = 3/0 - 10M  
 ( XLP USE-2 )

PROPOSED LIGHTING CONTROLLER " M "  
 TYPE CB-RCS 200AMP  
 1-PHASE, 3 WIRE, 240/480 VOLT



MODEL: Detail (Sheet) - 5  
 FILE NAME: c:\pwworking\illinois.gov\_reema.sweidan\illinois.gov\d1175468\68K93-sh-Details.dgn

|                           |            |           |
|---------------------------|------------|-----------|
| USER NAME = reema.sweidan | DESIGNED - | REVISED - |
|                           | DRAWN -    | REVISED - |
|                           | CHECKED -  | REVISED - |
| PLOT DATE = 10/31/2025    | DATE -     | REVISED - |

STATE OF ILLINOIS  
 DEPARTMENT OF TRANSPORTATION

WIRING PLAN  
 I-74 & MAIN

SCALE: SHEET 5 OF 6 SHEETS STA. TO STA.

| F.A.I. RTE.               | SECTION                    | COUNTY      | TOTAL SHEETS       | SHEET NO. |
|---------------------------|----------------------------|-------------|--------------------|-----------|
| 74                        | (72-7)L-1(72(8,9)90-11)L-2 | PEOR.-TAZE. | 27                 | 16        |
| ILLINOIS FED. AID PROJECT |                            |             | CONTRACT NO. 68K93 |           |











NOTE THAT UNITS ARE IN METRIC CONSISTENT WITH ORIGINAL PLANS

CLAUDE H. HURLEY COMPANY

**BORING LOG**

PROJECT NO. 3-380-DB BORING NO. SB-181 (CONT)  
 PROJECT FAI-74 IMPROVEMENTS - INDUSTRIAL SPUR CORRIDOR  
 LOCATION BRIDGE NO. 090-0044 IND SPUR BL 10+063.9 7.4mR PEORIA & TAZEWELL COUNTIES, ILLINOIS  
 STRUCTURE STATION OFFSET STATE  
 DRILLING CONTRACTOR D & G DRILLING, INC.  
 DATE OF DRILLING: STARTED 1-12-95 COMPLETED 3-14-95 SURFACE ELEVATION 146.58  
 DRILLED BY J. WHEELER/R. BELL LOGGED BY K. OLSON/M. DEMOULT

| CLASSIFICATION                      | Depth | N       | Q <sub>v</sub> | w  | γ <sub>d</sub>    | GROUNDWATER DATA |       |       |                | DRILLING METHOD |                |
|-------------------------------------|-------|---------|----------------|----|-------------------|------------------|-------|-------|----------------|-----------------|----------------|
|                                     |       |         |                |    |                   | DATE             | DEPTH | HOUR  | RIG TYPE       |                 |                |
|                                     | Elev  | Sp0.15m | KPa            | %  | Kgpa <sup>3</sup> |                  |       |       |                | CHE-55          |                |
|                                     | 21    |         |                | 6  |                   | DD               | 2-23  | 8.4   | -              | 0.1m PA-2.3m    |                |
|                                     | 15    |         |                |    |                   |                  |       |       |                | 0.2m HSA-23.6m  |                |
|                                     | 14    |         |                |    |                   | RH               | 2-23  | 7.9   | 0              | RH-35.4m        |                |
|                                     |       |         |                |    |                   |                  |       |       |                | 0.2m HSA-31.2m  |                |
|                                     |       |         |                |    |                   |                  | 2-24  | 5.4   | 19d            | SAMPLER TYPE    | AD-SS          |
|                                     | 27    |         |                | 8  |                   | CLASSIFICATION   |       |       |                |                 |                |
|                                     | 25    |         |                |    |                   | Elev             | Depth | N     | Q <sub>v</sub> | w               | γ <sub>d</sub> |
|                                     | 24    |         |                |    |                   |                  |       |       |                |                 |                |
| GR SANDY GRAVEL, A-1-a              | 15    |         |                | 9  |                   |                  | 80    |       |                | 17              |                |
|                                     | 12    |         |                |    |                   | 100              | 0.13m |       |                |                 |                |
|                                     | 11    |         |                |    |                   |                  |       |       |                |                 |                |
|                                     | 10    |         |                | 10 |                   |                  | 150   | 0.13m |                | 13              |                |
|                                     | 12    |         |                |    |                   |                  |       |       |                |                 |                |
|                                     | 11    |         |                |    |                   |                  |       |       |                |                 |                |
|                                     | 10    |         |                | 5  |                   |                  | 190   | 0.10m |                | 14              |                |
|                                     | 12    |         |                |    |                   |                  |       |       |                |                 |                |
|                                     | 14    |         |                |    |                   |                  |       |       |                |                 |                |
| 116.86 END OF BORING 2-23-95        |       |         |                |    |                   |                  |       |       |                |                 |                |
|                                     | 30    |         |                | 7  |                   |                  |       |       |                |                 |                |
| GR SANDY GRAVEL, A-1-a              | 20    |         |                |    |                   |                  |       |       |                |                 |                |
|                                     | 13    |         |                |    |                   |                  |       |       |                |                 |                |
|                                     | 16    |         |                |    |                   |                  |       |       |                |                 |                |
|                                     | 14    |         |                | 6  |                   |                  |       |       |                |                 |                |
|                                     | 11    |         |                |    |                   |                  |       |       |                |                 |                |
|                                     | 13    |         |                |    |                   |                  |       |       |                |                 |                |
| 115.34 END OF BORING 2-28-95        |       |         |                |    |                   |                  |       |       |                |                 |                |
|                                     | 10    |         |                | 10 |                   |                  |       |       |                |                 |                |
|                                     | 12    |         |                |    |                   |                  |       |       |                |                 |                |
|                                     | 17    |         |                |    |                   |                  |       |       |                |                 |                |
| GR SANDY GRAVEL, A-1-a              | 16    |         |                | 5  |                   |                  |       |       |                |                 |                |
|                                     | 18    |         |                |    |                   |                  |       |       |                |                 |                |
|                                     | 25    |         |                |    |                   |                  |       |       |                |                 |                |
| 113.66                              |       |         |                |    |                   |                  |       |       |                |                 |                |
| DK GR & BR GR LAMINATED SILTY SHALE | 145   | 0.15m   |                | 11 |                   |                  |       |       |                |                 |                |

DK GR & BR GR LAMINATED SILTY SHALE

111.13 END OF BORING 3-14-95

MDF: P:\bhp\FILE NAME: 031000210001.DWG

|                              |          |         |
|------------------------------|----------|---------|
| USER NAME = mitch            | DESIGNED | REVISED |
| PLOT SCALE = 100,0000' / in. | DRAWN    | REVISED |
| PLOT DATE = 3/20/2023        | CHECKED  | REVISED |
|                              | DATE     | REVISED |

STATE OF ILLINOIS  
DEPARTMENT OF TRANSPORTATION

BORING LOGS - 68195

SCALE: NONE SHEET 1 OF 1

| RTE.     | SECTION                     | COUNTY  | TOTAL SHEETS       | SHEET NO. |
|----------|-----------------------------|---------|--------------------|-----------|
| FAI 74   | (72-7)1-1,(72(8,9);90-1)1-2 | PEO-TAZ | 27                 | 22        |
|          |                             |         | CONTRACT NO. 68K93 |           |
| ILLINOIS |                             |         |                    |           |





NOTE THAT UNITS ARE IN METRIC CONSISTENT WITH ORIGINAL PLANS

| RSV ENGINEERING, INC.   |   | SCHAUMBURG, ILLINOIS |                  |         |             |                    |          |                 |  |
|---|---|----------------------|------------------|---------|-------------|--------------------|----------|-----------------|--|
| BORING LOG  |   |                      |                  |         |             |                    |          |                 |  |
| JOB NO: 98600   | CLIENT: ILLINOIS DEPARTMENT OF TRANSPORTATION | BORING NO: RWH1-1    |                  |         |             |                    |          |                 |  |
| PROJECT: Interstate Route 74 Improvements - Peoria, Illinois        |   | STATION: 10+318      |                  |         |             |                    |          |                 |  |
| LOCATION: Retaining Wall Ramp H-1 SN 090-8505                       |   | OFFSET: 6 m Lt       |                  |         |             |                    |          |                 |  |
| BORING RIG & METHOD: CME-55 w/Hollow Stem Augers                    |   | SURF ELEV: 139.49    |                  |         |             |                    |          |                 |  |
| SOIL DESCRIPTION  | ELEV.   | DEPTH                | SAMPLE FROM - TO | REC. mm | BLOWS/150mm | q <sub>u</sub> kPa | STRAIN % | WATER CONTENT % |  |
| 75 mm Root zone material  | 139.40  |                      | 0.00-0.30        |         | Auger       |                    |          | 21              |  |
| FILL: Black Clay Loam A-6;<br>Organic matter noted                  |   |                      | 0.30-0.76        | 254     | 7-8         | 43                 |          | 13              |  |
| FILL: Gr & Br Loam A-4  |   |                      | 1.07-1.52        | 254     | 3<br>5-7    | 508                | 15       | 11              |  |
|   | 137.75  |                      | 1.83-2.29        | 356     | 5<br>7-4    | 670                | 15       | 11              |  |
| FILL: Br Sand A-1-a   | 137.86  |                      | 2.59-3.05        | 356     | 4<br>7-6    | 43                 |          | 13              |  |
| FILL: Br Loam A-4   |   |                      | 3.35-3.81        | 406     | 9<br>12-10  | 297                | 15       | 11              |  |
| Medium Dense Br Sand A-1-a  | 135.83  |                      | 4.11-4.57        | 457     | 1<br>1-2    | 86                 | 15       | 37              |  |
| Medium Stiff to Soft Gr Silty Loam A-6 (9);<br>Organic matter noted | 135.53  |                      | 4.88-5.49        | 610     | 75mm ST     | 29                 | 6        | 31              |  |
|   |   |                      | 5.64-6.10        | 406     | 1<br>1-1    | 29                 | 15       | 24              |  |
| Sand under hydrostatic pressure<br>below 6.4 m                      | 133.09  |                      | 6.40-6.86        | 457     | 0<br>1-1    |                    |          | 21              |  |
| Very Loose to Loose Br Sand A-1-b                                   |   |                      | 7.16-7.62        | 457     | 2<br>2-6    |                    |          | 24              |  |
|   |   |                      | 7.92-8.38        | 305     | 1<br>1-1    |                    |          | 20              |  |
|   | 130.41  |                      | 8.69-9.14        | 406     | 1<br>2-2    |                    |          | 20              |  |
| Stiff to Medium Stiff Gr Silty Loam A-6                             |   |                      | 9.45-9.91        | 457     | 1<br>3-3    | 153                | 15       | 30              |  |
|   |   |                      | 10.21-10.67      | 457     | 1<br>5-4    | 115                | 15       | 38              |  |
|   |   |                      | 10.97-11.43      | 457     | 1<br>1-1    | 86                 | 15       | 32              |  |
|   |   |                      | 11.73-12.19      | 610     | 75mm ST     | 48                 | 14       | 26              |  |

|         |                                   |   |                      |
|---------|-----------------------------------|---|----------------------|
| REMARKS |                                   | #Denotes Calibrated Penetrometer Estimate |                      |
| WATER   | 3.7m ELEV. 135.83 DURING DRILLING | ∅CORE SIZE                                | mm DATE: Jan 14, 00  |
| WATER   | m ELEV. AT COMPLETION             | ∅CASING LENGTH                            | m DRILLER: Winslow   |
| WATER   | 4.6m ELEV. 134.92 AFTER 24 HRS.   | ∅CASING DIAMETER                          | mm INSPECTOR: Nelson |

| RSV ENGINEERING, INC.   |   | SCHAUMBURG, ILLINOIS |                  |         |             |                    |          |                 |  |
|---|---|----------------------|------------------|---------|-------------|--------------------|----------|-----------------|--|
| BORING LOG  |   |                      |                  |         |             |                    |          |                 |  |
| JOB NO: 98600   | CLIENT: ILLINOIS DEPARTMENT OF TRANSPORTATION | BORING NO: RWH1-1    |                  |         |             |                    |          |                 |  |
| PROJECT: Interstate Route 74 Improvements - Peoria, Illinois        |   | STATION: 10+318      |                  |         |             |                    |          |                 |  |
| LOCATION: Retaining Wall Ramp H-1 SN 090-8505                       |   | OFFSET: 6 m Lt       |                  |         |             |                    |          |                 |  |
| BORING RIG & METHOD: CME-55 w/Hollow Stem Augers                    |   | SURF ELEV: 139.49    |                  |         |             |                    |          |                 |  |
| SOIL DESCRIPTION  | ELEV.   | DEPTH                | SAMPLE FROM - TO | REC. mm | BLOWS/150mm | q <sub>u</sub> kPa | STRAIN % | WATER CONTENT % |  |
| Stiff to Medium Stiff Gr Silty Loam A-6                             |   |                      | 12.50-12.95      | 457     | 1<br>1-1    | 48                 |          | 28              |  |
|   | 125.47  |                      | 13.26-13.87      | 610     | 75mm ST     | 77                 | 10       | 37              |  |
|   |   |                      | 14.02-14.48      | 457     | 2<br>3-4    |                    |          | 32              |  |
| Loose to Very Loose Gr Silt A-4; Occasional<br>Organic fibers noted |   | 15                   | 14.78-15.24      | 381     | 1<br>1-1    |                    |          | 27              |  |
|   | 123.94  |                      | 15.54-16.00      | 254     | 5<br>8-13   |                    |          | 18              |  |
| Medium Dense Gr Sand A-2-4  |   |                      | 16.31-16.76      | 152     | 5<br>10-15  |                    |          | 20              |  |
|   | 121.66  |                      | 17.07-17.53      | 305     | 9<br>7-7    |                    |          | 16              |  |
| Stiff to Medium Stiff Gr Silty Clay Loam A-4                        |   |                      | 17.83-18.29      | 457     | 1<br>3-3    | 96                 | 15       | 21              |  |
| Medium Dense Gr Sand A-1-b  | 120.50  |                      | 18.59-19.05      | 457     | 1<br>1-3    | 77                 | 15       | 29              |  |
|   | 119.68  |                      | 19.35-19.81      | 102     | 5<br>17-15  |                    |          | 2               |  |
| Boring terminated at 19.8 m   |   |                      |                  |         |             |                    |          |                 |  |

|         |                                   |   |                      |
|---------|-----------------------------------|---|----------------------|
| REMARKS |                                   | #Denotes Calibrated Penetrometer Estimate |                      |
| WATER   | 3.7m ELEV. 135.83 DURING DRILLING | ∅CORE SIZE                                | mm DATE: Jan 14, 00  |
| WATER   | m ELEV. AT COMPLETION             | ∅CASING LENGTH                            | m DRILLER: Winslow   |
| WATER   | 4.6m ELEV. 134.92 AFTER 24 HRS.   | ∅CASING DIAMETER                          | mm INSPECTOR: Nelson |

MOORE, PEORIA  
FILE NAME: 031000210001.DWG



CLAUDE H. HURLEY COMPANY

# BORING LOG

NOTE THAT UNITS ARE IN METRIC CONSISTENT WITH ORIGINAL PLANS

PROJECT NO. 3-380-D4 BORING NO. SB-272  
 PROJECT FAI-74 IMPROVEMENTS - MAIN STREET CORRIDOR  
 LOCATION BRIDGE NO. 090-0009 WBI-74BL 153+491.4 10.8mL PEORIA & TAZEWELL COUNTIES, ILLINOIS  
 STRUCTURE STATION OFFSET STATE  
 DRILLING CONTRACTOR WANG ENGINEERING, INC.  
 DATE OF DRILLING: STARTED 10-12-94 COMPLETED 10-12-94 SURFACE ELEVATION 152.03  
 DRILLED BY R. BELL LOGGED BY M. DOOLEY

| CLASSIFICATION                            | Depth        | N<br>Bp0.15m | Qu<br>KPa | W<br>% | γd<br>Kgpm <sup>3</sup> | GROUNDWATER DATA                  |       |                     | DRILLING METHOD |                  |                   |
|---|--------------|--------------|-----------|--------|-------------------------|-----------------------------------|-------|---------------------|-----------------|------------------|-------------------|
|   |              |              |           |        |                         | DATE                              | DEPTH | HOUR                | RIG TYPE        | AUGER TYPE-DEPTH |                   |
| SHOULDER MATERIALS: 203mm AC              |              | -            | -         | -      | -                       | DD                                | 10-12 | 8.1                 | -               | CME-55           | 0.15m HSA-10.3m   |
| 152.01<br>FILL: DK GR BR LOAM, A-4        | 5<br>5<br>9  | 150          | 12        | -      | -                       | BAR                               | 10-12 | 9.8                 | -               |                  |                   |
| 151.12<br>FILL: BR SANDY LOAM, A-2-4      | 6<br>9<br>6  | -            | 9         | -      | -                       | DC                                | 10-13 | 2.9                 | 1d              |                  | AU-SS             |
| 150.36<br>FILL: BR CLAY LOAM, A-6         | 5<br>3<br>3  | 190          | 11        | -      | -                       | CLASSIFICATION                    |       | N                   | Qu              | W                | γd                |
| 149.60<br>FILL: BR SILTY CLAY, A-7-6      | 2<br>4<br>4  | 170          | 25        | -      | -                       | Elev                              | Depth | Bp0.15m             | KPa             | %                | Kgpm <sup>3</sup> |
| 148.83<br>FILL: BR CLAY LOAM, A-6         | 0<br>4<br>6  | 285          | 13        | -      | -                       | 144.72                            |       |                     |                 |                  |                   |
| 147.92<br>FILL: BR SILT, A-4              | 5<br>8<br>7  | -            | 17        | -      | -                       | FILL: BR, GR BR & GR SILT, A-4    | 8     | 2<br>2<br>3         | -               | 17               | -                 |
| 147.31<br>FILL: BR SILTY LOAM, A-4        | 2<br>2<br>4  | 95           | 16        | -      | -                       | 143.50                            |       |                     |                 |                  |                   |
| 145.33<br>FILL: DK BR & BR CLAY LOAM, A-6 | 5<br>3<br>3  | 95           | 17        | -      | -                       | FILL: DK GR, BR & GR SILT, A-4    | 9     | 2<br>5<br>25        | -               | 42               | -                 |
| 145.02                                    | 9<br>7<br>10 | 150<br>240   | 19<br>15  | -      | -                       | 143.04                            |       |                     |                 | 12               | -                 |
|   |              |              |           |        |                         | DK GR LAMINATED CLAY SHALE        | 10    | 48<br>100/<br>0.05m | -               | 11               | -                 |
|   |              |              |           |        |                         | 141.98                            |       |                     |                 |                  |                   |
|   |              |              |           |        |                         | GRN GR TO GR LAMINATED CLAY SHALE | 11    | 100/<br>0.10m       | -               | 19               | -                 |
|   |              |              |           |        |                         | 141.73 END OF BORING              | 12    |                     |                 |                  |                   |
|   |              |              |           |        |                         |                                   | 13    |                     |                 |                  |                   |

MOORE, DORIS  
FILE NAME: 031000211001.DWG

|                              |          |         |
|------------------------------|----------|---------|
| USER NAME = mitch            | DESIGNED | REVISED |
| PLOT SCALE = 100,0000' / in. | DRAWN    | REVISED |
| PLOT DATE = 3/20/2023        | CHECKED  | REVISED |
|                              | DATE     | REVISED |

STATE OF ILLINOIS  
DEPARTMENT OF TRANSPORTATION

BORING LOGS - 68201

SCALE: NONE SHEET 1 OF 1

| RTE.     | SECTION                     | COUNTY  | TOTAL SHEETS       | SHEET NO. |
|----------|-----------------------------|---------|--------------------|-----------|
| FAI 74   | (72-7)1-1,(72(8,9),90-1)1-2 | PEO-TAZ | 27                 | 27        |
|          |                             |         | CONTRACT NO. 68K93 |           |
| ILLINOIS |                             |         |                    |           |