

INDEX OF SHEETS

- 1 . COVER SHEET
- 2 . GENERAL NOTES
- 3-4 . SUMMARY OF QUANTITIES
- 5 . TYPICAL SECTIONS - LOCATION NO. 1 - STRUCTURE NO. 032-0099
- 6 - 11 . EXISTING STRUCTURE PLANS FOR STRUCTURE NO. 050-0219

HIGHWAY STANDARDS

- 000001-09 STANDARD SYMBOLS, ABBREVIATIONS AND PATTERNS
- 001006 DECIMAL OF AN INCH AND OF A FOOT
- 701001-02 OFF-ROAD OPERATIONS 2L, 2W, MORE THAN 15' (4.5 m) AWAY
- 701006-05 OFF-ROAD OPERATIONS 2L, 2W, 15' (4.5 m) TO 24" (600 mm) FROM PAVEMENT EDGE
- 701301-04 LANE CLOSURE, 2L, 2W, SHORT TIME OPERATIONS
- 701501-06 URBAN LANE CLOSURE, 2L, 2W, UNDIVIDED
- 701901-11 TRAFFIC CONTROL DEVICES
- 701801-06 SIDEWALK, CORNER OR CROSSWALK CLOSURE

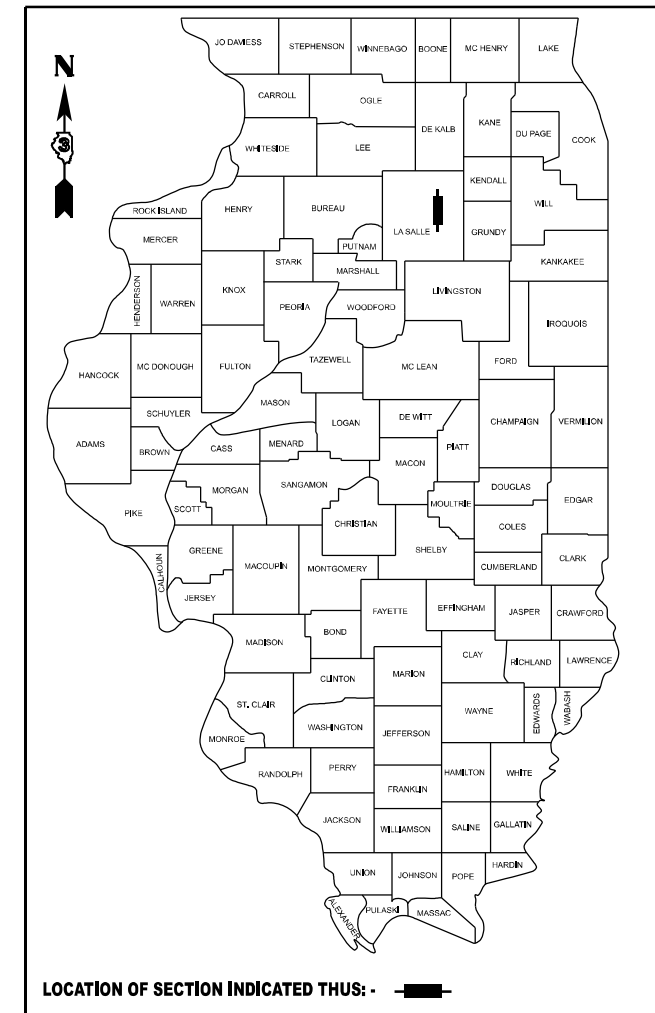
STATE OF ILLINOIS
DEPARTMENT OF TRANSPORTATION

**PROPOSED
HIGHWAY PLANS**

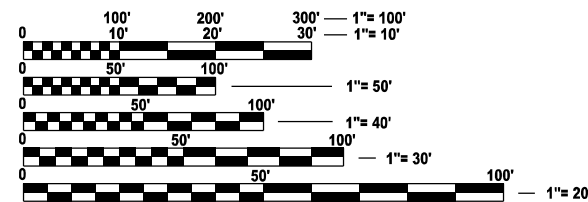
FAS 268A (MAIN ST.)
SECTION (1B-1)BRR
PROJECT STP - JVV3(743)
EXPANSION TROUGH REPLACEMENT
LASALLE COUNTY
C-93-169-25

| | | | | |
|---------------------|----------------------|-------------------|--------------------|----------------|
| F.A.S. RTE. 268A | SECTION (1B-1)BRR | COUNTY LASALLE | TOTAL SHEETS 11 | SHEET NO. 1 |
| | | ILLINOIS | CONTRACT NO. 66T10 | |

D-93-130-25



PROJECT LOCATION
STRUCTURE NO. 050-0219
CARRYING CH 15 OVER
THE ILLINOIS RIVER
0.4 MI. SOUTH OF US ROUTE 6
IN MARSEILLES



FULL SIZE PLANS HAVE BEEN PREPARED USING STANDARD ENGINEERING SCALES. REDUCED SIZED PLANS WILL NOT CONFORM TO STANDARD SCALES. IN MAKING MEASUREMENTS ON REDUCED PLANS, THE ABOVE SCALES MAY BE USED.

J.U.L.I.E.
JOINT UTILITY LOCATION INFORMATION FOR EXCAVATION
1-800-892-0123
OR 811

PROJECT ENGINEER JUNIOR SENAT P.E.
UNIT CHIEF RON WOODSHANK
DISTRICT 3 (815) 434-6131
CONTRACT NO. 66T10

FUNCTIONAL CLASSIFICATION
RURAL - MAJOR COLLECTOR
F.A.S. ROUTE 268A (CH 19)
2023 ADT = 3,450
P.V. 100.0 % S.U. 0.0 % M.U. 0.0 %

STATE OF ILLINOIS
DEPARTMENT OF TRANSPORTATION
SUBMITTED: March 25, 2026
Trisha Thompson REGIONAL ENGINEER
May 8, 2026
[Signature] ENGINEER OF DESIGN AND ENVIRONMENT
May 8, 2026
[Signature] DIRECTOR OF HIGHWAYS PROJECT IMPLEMENTATION

**PRINTED BY THE AUTHORITY
OF THE STATE OF ILLINOIS**

GENERAL NOTES

PRIOR TO ANY CONSTRUCTION WORK BEING PERFORMED ON STRUCTURES OVER NAVIGATIONAL WATERS, IN ACCORDANCE WITH THE SPECIAL PROVISIONS FOR "COAST GUARD REQUIREMENTS FOR WORKING ABOVE NAVIGATIONAL WATERS", THE CONTRACTORS SHALL OBTAIN APPROVAL FROM THE "UNITED STATES COAST GUARD (USCG)"

SEE SPECIAL PROVISIONS "FABRIC REINFORCED ELASTOMERIC TROUGH". THE ENGINEER AND CONTRACTOR SHALL FIELD VERIFY THE LENGTHS AND WIDTHS OF THE NEW TROUGH, SIDE FLAPS, TROUGH SPLICE AND SPLICE MATS PRIOR TO ORDERING OF MATERIALS.

COMMITMENTS

NONE

STATE OF ILLINOIS
DEPARTMENT OF TRANSPORTATION
DISTRICT THREE
AS BUILT INFORMATION

SUPERVISING CONSTRUCTION FIELD ENGINEER

RESIDENT ENGINEER / TECHNICIAN

START & END DATES
OF CONSTRUCTION: _____

INSPECTORS: _____

MODEL: Default
FILE NAME: c:\p\work\pww\illinois.gov_oladete.o.popoola@illinois.gov\1140682\0366T10.dgn

| | | |
|-------------------------------|------------------|-----------|
| USER NAME = Oladete,O.Popoola | DESIGNED - RW | REVISED - |
| | DRAWN - RW | REVISED - |
| | CHECKED - JS | REVISED - |
| PLOT DATE = 3/18/2026 | DATE - 8/20/2025 | REVISED - |

STATE OF ILLINOIS
DEPARTMENT OF TRANSPORTATION

GENERAL NOTES

SCALE: SHEET 1 OF 1 SHEETS STA. TO STA.

| F.A.S. RTE. | SECTION | COUNTY | TOTAL SHEETS | SHEET NO. |
|-------------|-----------|---------------------------|--------------------|-----------|
| 268A | (1B-1)BRR | LASALLE | 11 | 2 |
| | | | CONTRACT NO. 66T10 | |
| | | ILLINOIS FED. AID PROJECT | | |

MODEL: Default
 FILE NAME: c:\p\work\pwr\illinois.gov_oladele.o.popoola@illinois.gov\140682\0368T10.dgn

| CODE NO. | ITEM | UNIT | TOTAL QUANTITY | CONSTRUCTION CODE | |
|----------|---|--------|----------------|--|--|
| | | | | MBPM 80% FED 20% STATE BRIDGE 0047 S.N. 050-0219 | |
| 52000600 | FABRIC REINFORCED ELASTOMERIC TROUGH | FOOT | 126 | 126 | |
| 67100100 | MOBILIZATION | L SUM | 1 | 1 | |
| 70102620 | TRAFFIC CONTROL AND PROTECTION, STANDARD 701501 | L SUM | 1 | 1 | |
| 70102640 | TRAFFIC CONTROL AND PROTECTION, STANDARD 701801 | L SUM | 1 | 1 | |
| 70107025 | CHANGEABLE MESSAGE SIGN | CAL DA | 14 | 14 | |

| | | |
|-------------------------------|------------------|-----------|
| USER NAME = Oladele.O.Popoola | DESIGNED - RW | REVISED - |
| | DRAWN - RW | REVISED - |
| | CHECKED - JS | REVISED - |
| PLOT DATE = 3/18/2026 | DATE - 8/20/2025 | REVISED - |

**STATE OF ILLINOIS
 DEPARTMENT OF TRANSPORTATION**

SUMMARY OF QUANTITIES

SCALE: SHEET 1 OF 2 SHEETS STA. TO STA.

| | | | | |
|---------------------------|----------------------|-------------------|--------------------|----------------|
| F.A.S. RTE. 268A | SECTION (1B-1)BRR | COUNTY LASALLE | TOTAL SHEETS 11 | SHEET NO. 3 |
| ILLINOIS FED. AID PROJECT | | | CONTRACT NO. 66T10 | |

SCHEDULE

| LOCATION | FABRIC REINFORCED ELASTOMERIC TROUGH* | CHANGEABLE MESSAGE SIGN | TC&P 701501 | TC&P 701801 |
|---------------|---------------------------------------|-------------------------|-------------|-------------|
| | FOOT | CAL DAY | L SUM | L SUM |
| PROJECT AREA | | 14 | 1 | 1 |
| PIER 2 | 4 2 | | | |
| PIER 5 | 4 2 | | | |
| N ABUTMENT | 4 2 | | | |
| TOTALS | 126 | 14 | 1 | 1 |

*SEE GENERAL NOTES & PROVISIONS - FIELD LENGTHS TO BE VERIFIED BEFORE ORDERING MATERIALS

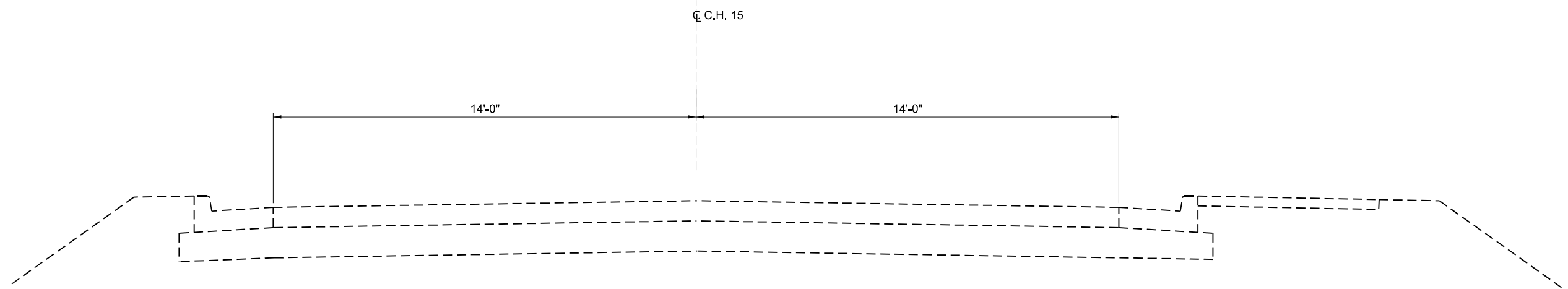
MODEL: Default
FILE NAME: c:\pwworkspace\illinois.gov\oladele.o.popoola@illinois.gov\d140682\0368T10.dgn

| | | |
|-------------------------------|------------------|-----------|
| USER NAME = Oladele.O.Popoola | DESIGNED - RW | REVISED - |
| | DRAWN - RW | REVISED - |
| | CHECKED - JS | REVISED - |
| PLOT DATE = 3/18/2026 | DATE - 8/20/2025 | REVISED - |

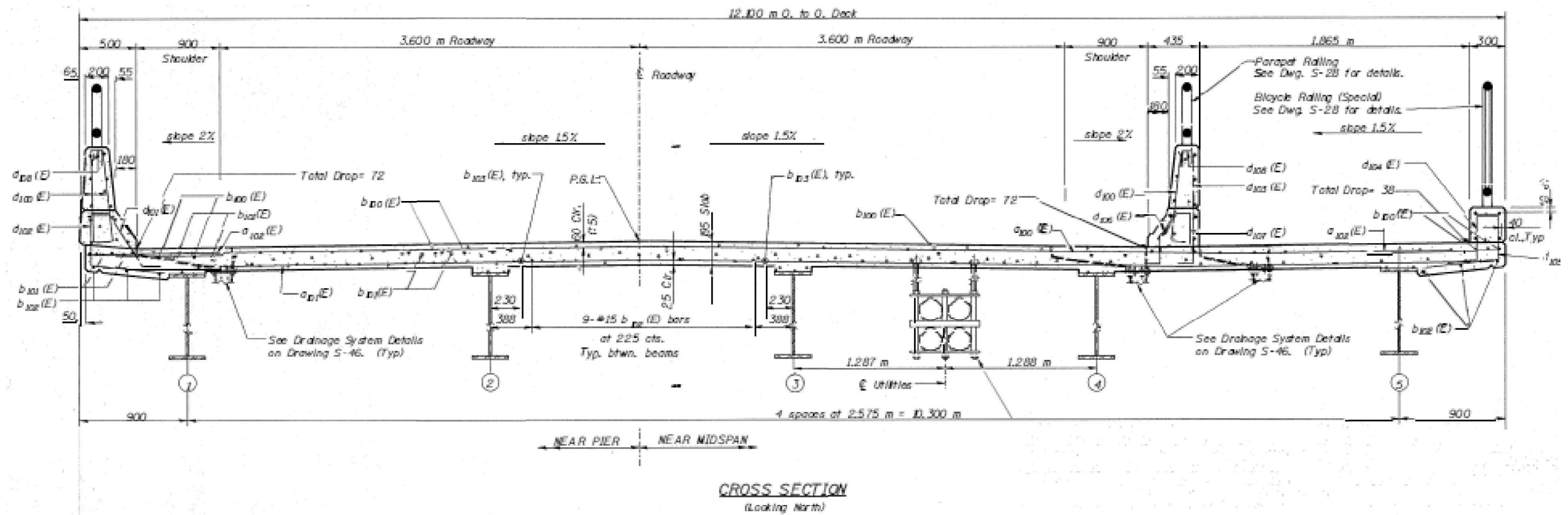
**STATE OF ILLINOIS
DEPARTMENT OF TRANSPORTATION**

| | | | |
|-----------------|---------|-------------|--------------|
| SCHEDULE | | | |
| SCALE: | SHEET 2 | OF 2 SHEETS | STA. TO STA. |

| | | | | |
|---------------------------|----------------------|-------------------|--------------------|----------------|
| F.A.S. RTE. 268A | SECTION (1B-1)BRR | COUNTY LASALLE | TOTAL SHEETS 11 | SHEET NO. 4 |
| ILLINOIS FED. AID PROJECT | | | | |



TYPICAL SECTION
C.H. 15
NORTH AND SOUTH OF THE RIVER
 LOOKING NORTH



CROSS SECTION
 (Looking North)

MODEL: Default
 FILE NAME: c:\p\work\pwwd\illinois.gov_oladete.o.popoola@illinois.gov\1140682\0366T10.dgn

| | | |
|-------------------------------|------------------|-----------|
| USER NAME = Oladete,O.Popoola | DESIGNED - RW | REVISED - |
| | DRAWN - RW | REVISED - |
| | CHECKED - JS | REVISED - |
| PLOT DATE = 3/18/2026 | DATE - 8/20/2025 | REVISED - |

STATE OF ILLINOIS
DEPARTMENT OF TRANSPORTATION

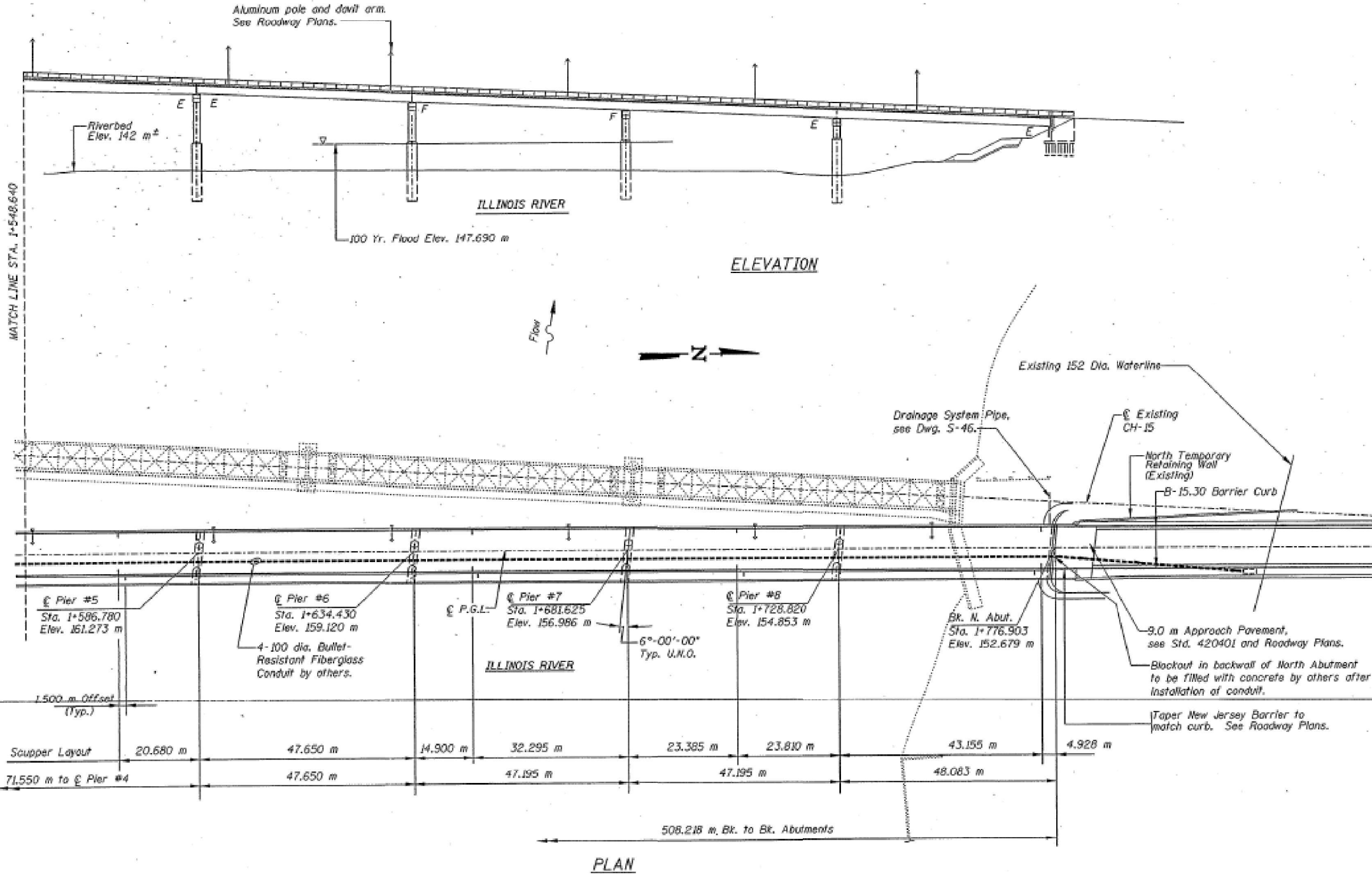
| | |
|------------------------|-------------|
| TYPICAL SECTION | |
| SCALE: | TO STA. |
| SHEET 1 | OF 1 SHEETS |

| | | | | |
|---------------------------|-------------------|----------------|-----------------|-------------|
| F.A.S. RTE. 268A | SECTION (1B-1)BRR | COUNTY LASALLE | TOTAL SHEETS 11 | SHEET NO. 5 |
| CONTRACT NO. 66T10 | | | | |
| ILLINOIS FED. AID PROJECT | | | | |

| | | | | |
|-----------------------|----------|----------|--------------|-----------|
| ROUTE NO. | SECTION | COUNTY | TOTAL SHEETS | SHEET NO. |
| FAHLEIGH | 10 | LA SALLE | 100 | 31 |
| STA. | TO STA. | | | |
| FED. ROAD DIST. NO. 7 | BLK. NO. | PROJECT | | |

GENERAL NOTES

- Fasteners shall be high strength bolts. Bolts M22, open holes 24 mm ϕ , unless otherwise noted.
- Roadway expansion guards shall be assembled in the proper position with the ends in place and shall be left assembled for shop inspection.
- The roadway expansion plates shall be flame cut as provided in Article 505.04(i) of the Standard Specifications.
- The inorganic Zinc rich Primer / Acrylic / Acrylic paint system shall be used for shop and field painting of New Structural Steel except where otherwise noted. The color of the acrylic finish coat shall be reddish brown Munsell No. 2.5 YR 3/4. The field coats for all existing structural steel including girders and cross frames is included in this contract. See Special Provisions "Cleaning and Painting Metal Structures".
- Field welding of construction accessories will not be permitted to the bottom flange of beams or girders nor to the top flange for a distance equal to one-fourth the span length each way from the pier supports. Field welding in other areas will be permitted only when approved by the Engineer.
- Reinforcement bars shall conform to the requirements of AASHTO M-31M, M-42M or M-53M Grade 400.
 - When the deck pour is stopped for the day at one or more of the transverse Bonded Construction Joints in the deck Pouring Sequence as shown, the next pour shall not be made until both of the following requirements are met:
 - At least 72 hours shall have elapsed from the end of the previous pour.
 - The concrete strength shall have attained a minimum modulus of rupture of 4.5 MPa or a minimum compressive strength of 24 MPa.



GENERAL PLAN
CH-15 OVER ILLINOIS RIVER
F.A.U. RTE. 6265 (CV-15) SECTION 10
LA SALLE COUNTY STA. 1+522.794
STRUCTURE NUMBER 050-0219

CDI CLARK DIETZ, INC.
ENGINEERS ARCHITECTS
CHAMPAIGN, ILLINOIS CHICAGO, ILLINOIS

DATE: 2-15-97
PROJECT NO. S-3

MODEL: Default
FILE NAME: c:\pwworking\illinois.gov\oladete.o.popoola\1140682.D366T10.dgn

| | | |
|-------------------------------|------------------|-----------|
| USER NAME = Oladete,O.Popoola | DESIGNED - RW | REVISED - |
| | DRAWN - RW | REVISED - |
| | CHECKED - JS | REVISED - |
| PLOT DATE = 3/18/2026 | DATE - 8/20/2025 | REVISED - |

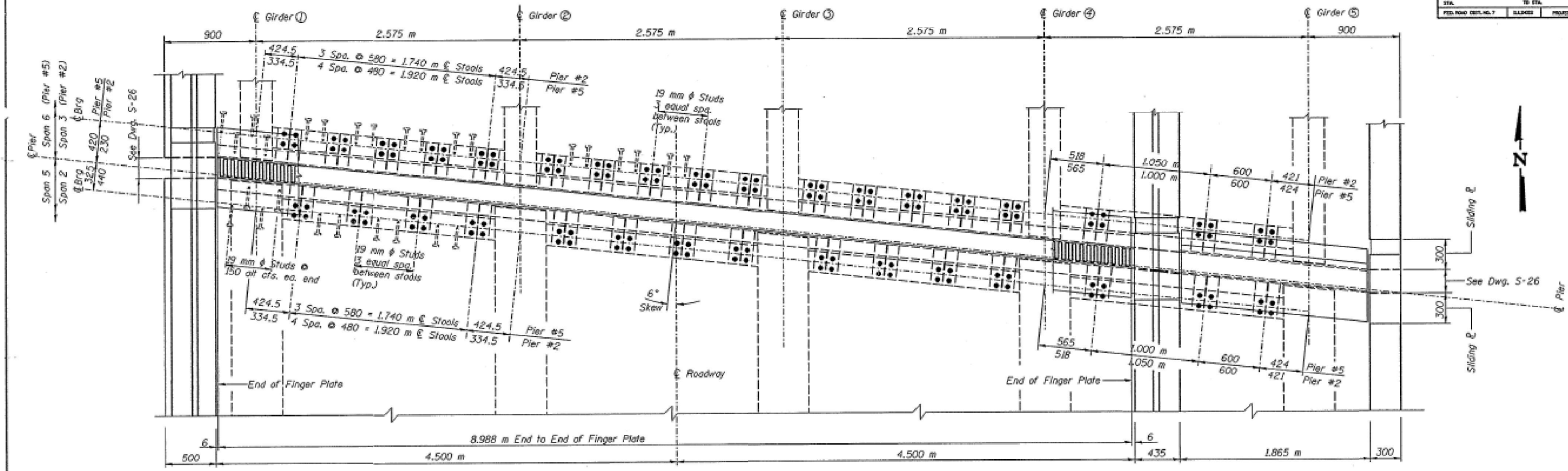
STATE OF ILLINOIS
DEPARTMENT OF TRANSPORTATION

EXISTING STRUCTURE PLANS
FOR STRUCTURE NO. 050-0219

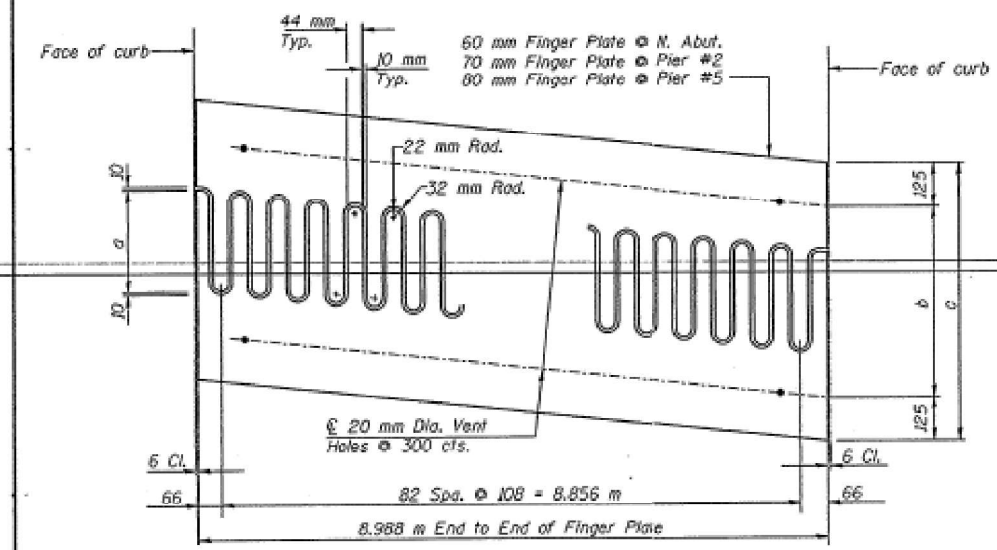
SCALE: SHEET 2 OF 6 SHEETS STA. TO STA.

| | | | | |
|---------------------------|-------------------|----------------|-----------------|-------------|
| F.A.S. RTE. 268A | SECTION (1B-1)BRR | COUNTY LASALLE | TOTAL SHEETS 11 | SHEET NO. 7 |
| CONTRACT NO. 66T10 | | | | |
| ILLINOIS FED. AID PROJECT | | | | |

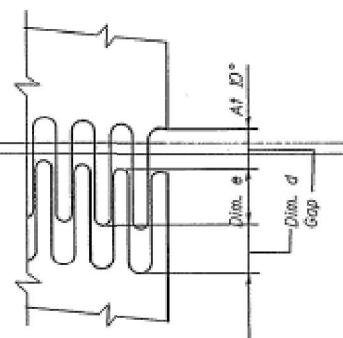
| | | | | |
|-----------------------|-----------|---------|--------------|-----------|
| ROUTE NO. | SECTION | COUNTY | TOTAL SHEETS | SHEET NO. |
| F.A.S. RTE. 268A | (1B-1)BRR | LASALLE | 11 | 8 |
| STA. | TO STA. | PROJECT | | |
| FED. ROAD DIST. NO. 7 | | | | |



PLAN AT PIER NO. 5
 PLAN AT PIER NO. 2 (SIM.)
 For Deck Plans at Pier No. 2 and No. 5 see Drawing S-26.



FLAME CUTTING DIAGRAM



FINGER PLATE SETTING DIAGRAM

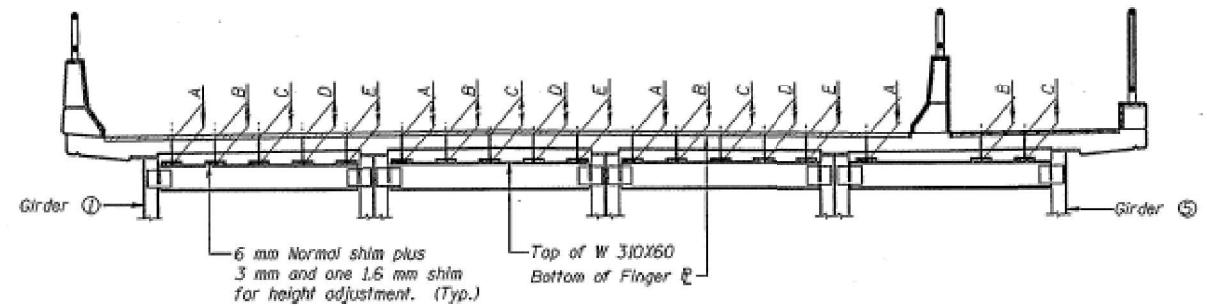


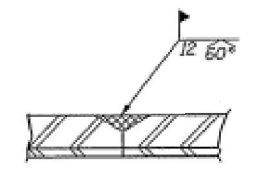
TABLE OF STOOL HEIGHTS AT PIER #2 & PIER #5

| Location | Between Girders 1 & 2 | | | | | Between Girders 2 & 3 | | | | | Between Girders 3 & 4 | | | | | Between Girders 4 & 5 | | |
|------------------|-----------------------|-----|-----|-----|-----|-----------------------|-----|-----|-----|-----|-----------------------|-----|-----|-----|-----|-----------------------|-----|-----|
| | A | B | C | D | E | A | B | C | D | E | A | B | C | D | E | A | B | C |
| Pier #5 / Span 5 | 289 | 301 | 312 | 324 | — | 341 | 353 | 362 | 356 | — | 348 | 342 | 336 | 330 | — | 317 | 361 | 373 |
| Pier #5 / Span 6 | 266 | 276 | 286 | 296 | 306 | 320 | 329 | 338 | 340 | 335 | 329 | 324 | 318 | 313 | 308 | 296 | 340 | 352 |
| Pier #2 / Span 2 | 318 | 323 | 328 | 333 | 338 | 345 | 351 | 356 | 353 | 344 | 330 | 321 | 311 | 301 | 292 | 272 | 294 | 300 |
| Pier #2 / Span 3 | 330 | 336 | 342 | 348 | — | 357 | 363 | 367 | 355 | — | 338 | 327 | 315 | 304 | — | 282 | 305 | 311 |

Heights shown are at bearing and diaphragm and include 6 mm nominal shims. Stool heights shown in the tables on this Drawing and on Drawing S-25 are theoretical. Contractor shall field verify elevation of supporting element and adjust stool heights accordingly. Cost included in unit price bid for F & E Structural Steel.

TABLE OF VARIABLES

| LOCATION | a | b | c | d | e |
|------------|-----|-----|-----|-----|-----|
| Pier No. 2 | 230 | 360 | 610 | 107 | 136 |
| Pier No. 5 | 306 | 436 | 686 | 144 | 174 |
| No. Abut. | 186 | 316 | 566 | 85 | 114 |



FINGER PLATE SPLICE DETAIL

- NOTE:
- The Finger Plates shall be flame cut as provided in Article 505.04 (K) of the Standard Specifications using a 10 mm wide cut.
 - All dimensions for expansion gaps are at 10° C, except as noted.
 - For additional notes, see Drawing S-25.
 - All dimensions are in millimeters (mm) except as noted.

FINGER PLATE AT PIER NO. 2 AND PIER NO. 5
 ON-15 OVER ILLINOIS RIVER
 F.A.S. RTE. 6265 (CH-15) SECTION 1D
 LA SALLE COUNTY STA. 1+522.794
 STRUCTURE NUMBER 050-0219

CDI CLARK DIETZ, INC.
 ENGINEERS ARCHITECTS

CHAMPAIGN, ILLINOIS CHICAGO, ILLINOIS

DESIGNED BY: M.J.E. DRAWN BY: M.J.E. DATE: 2-15-97
 CHECKED BY: M.J.E. APPROVED BY: S.C.L. ACTIVITY: BRIDGE

DRAWING NUMBER: S-24

| | | |
|-------------------------------|------------------|-----------|
| USER NAME = Oladete,O.Popoola | DESIGNED - RW | REVISED - |
| | DRAWN - RW | REVISED - |
| | CHECKED - JS | REVISED - |
| PLOT DATE = 3/18/2026 | DATE = 8/20/2025 | REVISED - |

STATE OF ILLINOIS
 DEPARTMENT OF TRANSPORTATION

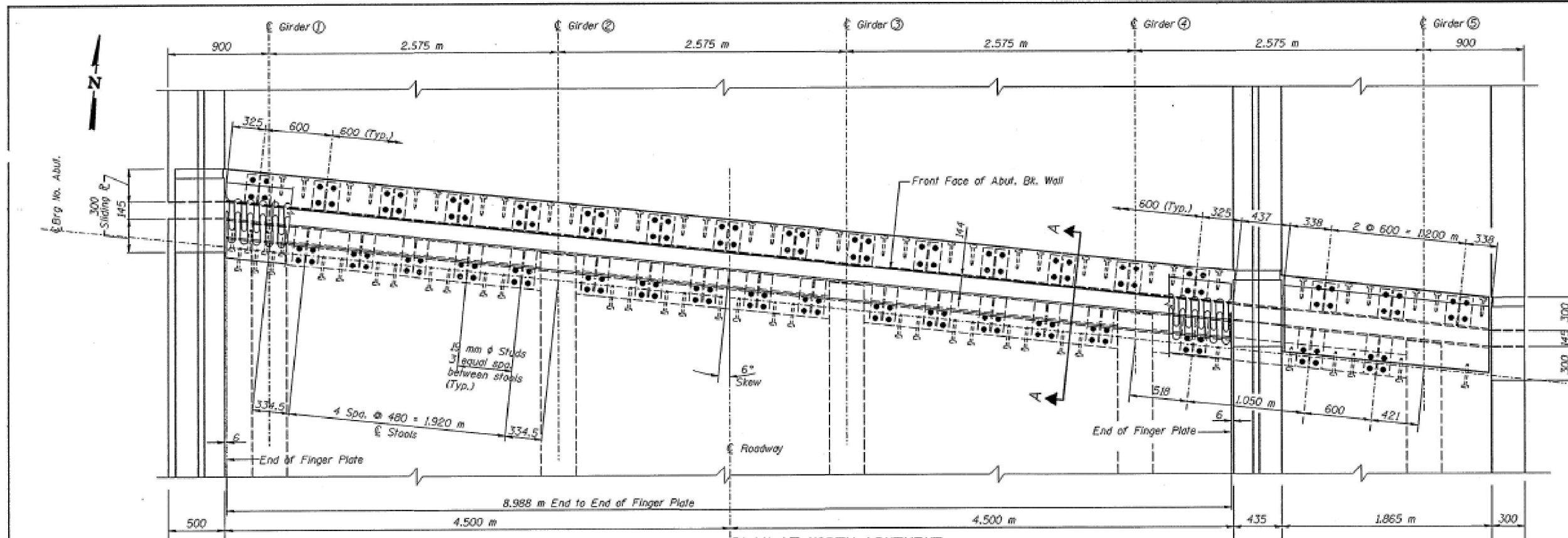
EXISTING STRUCTURE PLANS
 FOR STRUCTURE NO. 050-0219

SCALE: SHEET 3 OF 6 SHEETS STA. TO STA.

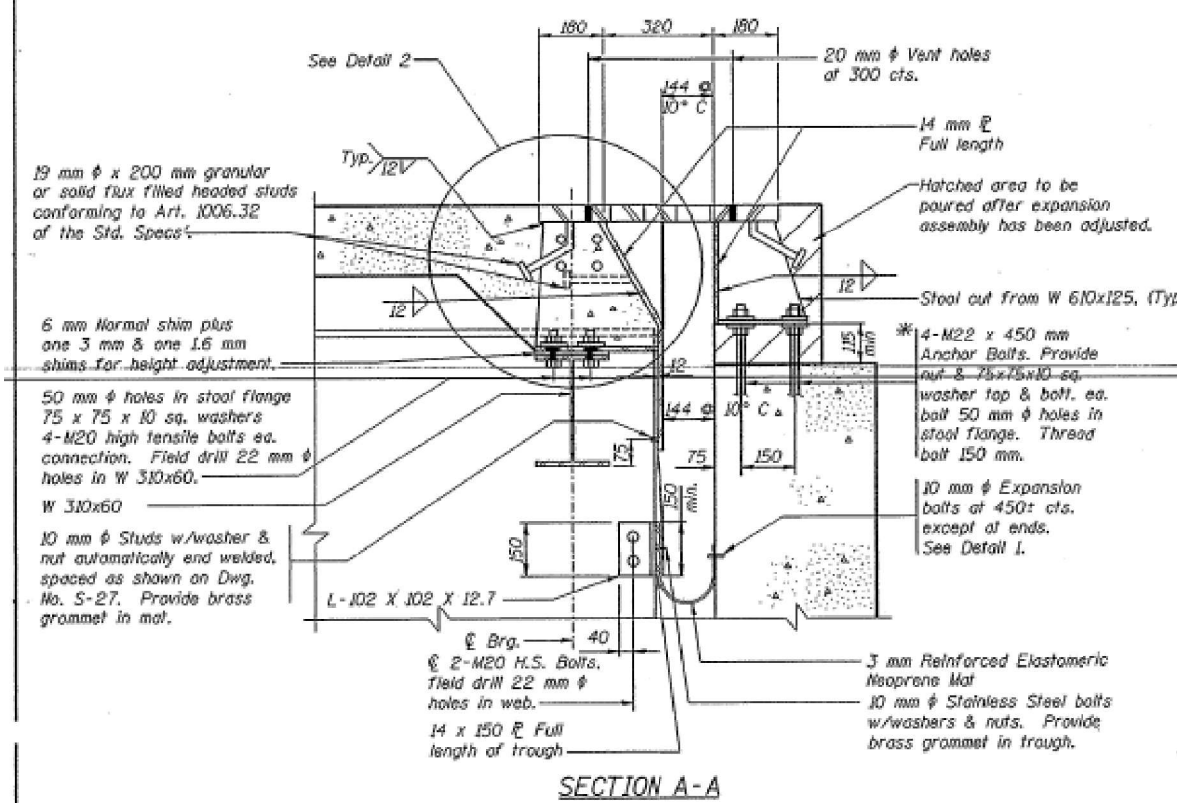
| | | | | |
|------------------|-------------------|---------------------------|--------------------|-------------|
| F.A.S. RTE. 268A | SECTION (1B-1)BRR | COUNTY LASALLE | TOTAL SHEETS 11 | SHEET NO. 8 |
| | | | CONTRACT NO. 66T10 | |
| | | ILLINOIS FED. AID PROJECT | | |

MODEL: Default
 FILE NAME: c:\pwworking\illinois.gov\oladete.o.popoola@illinois.gov\d140682\0366T10.dgn

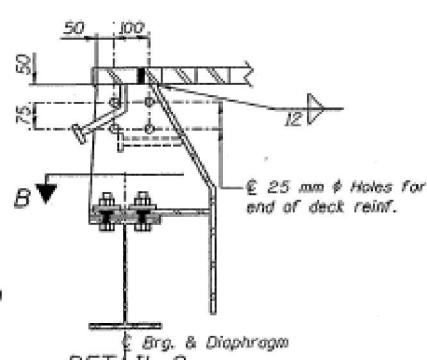
| | | | | |
|-----------------------|---------|----------|--------------|-----------|
| ROUTE NO. | SECTION | COUNTY | TOTAL SHEETS | SHEET NO. |
| FARM ROAD 268A | 10 | LA SALLE | 100 | 53 |
| STA. | TO STA. | | | |
| FED. ROAD DIST. NO. 7 | LANES | PROJECT | | |



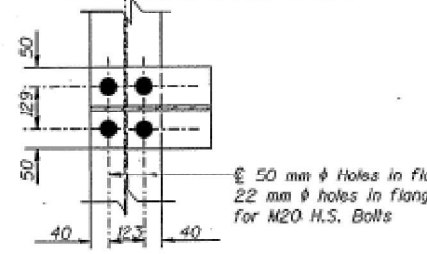
PLAN AT NORTH ABUTMENT



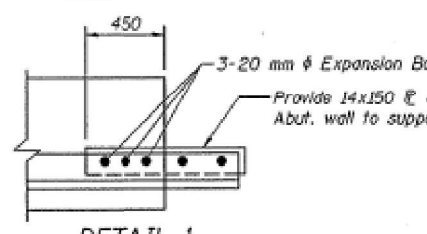
SECTION A-A



DETAIL 2



SECTION B



DETAIL 1

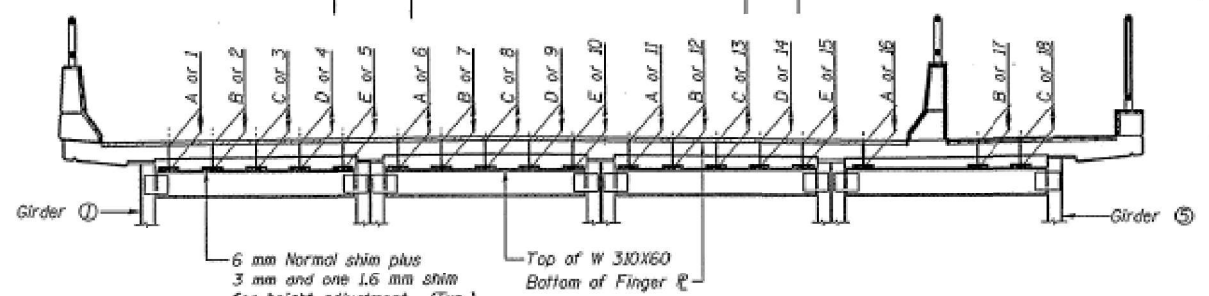


TABLE OF STOOL HEIGHTS AT NORTH ABUTMENT (See Notes on Drawing S-24.)

| Back Wall Location | 1 | 2 | 3 | 4 | 5 | 6 | 7 | 8 | 9 | 10 | 11 | 12 | 13 | 14 | 15 | 16 | 17 | 18 |
|--------------------|-------|-----|-------|-----|-------|-----|-------|-----|-------|-----|-------|-----|-------|-----|-------|-----|--------|-----|
| Height | 238 | 250 | 263 | 275 | 288 | 300 | 313 | 325 | 318 | 311 | 305 | 298 | 291 | 284 | 278 | 305 | 317 | 329 |
| Between Girders | 1 & 2 | | 2 & 3 | | 3 & 4 | | 4 & 5 | | 5 & 6 | | 6 & 7 | | 7 & 8 | | 8 & 9 | | 9 & 10 | |
| Location | A | B | C | D | E | A | B | C | D | E | A | B | C | D | E | A | B | C |
| Height | 287 | 297 | 306 | 316 | 326 | 340 | 349 | 358 | 360 | 355 | 349 | 344 | 339 | 333 | 328 | 317 | 340 | 362 |

Stool heights shown in the tables on Drawing S-24 and on this Drawing are theoretical. Contractor shall field verify elevation of supporting element and adjust stool heights accordingly. Cost included in unit price bid for F & E Structural Steel.

- Notes:
- The expansion device shall be fabricated to fit the roadway grade and cross slope.
 - All plates, studs, stools, bolts and all other work and materials needed for the Finger Plate Assembly shall be included in the unit price bid for Furnishing and Erecting Structural Steel (AASHTO M270 Grade 345).
 - The cost of the Elastomeric Neoprene Mat, Trough and End Dam complete in place shall be paid for at the unit price bid for Reinforced Neoprene Expansion Joint Treatment.
 - 10 mm diameter and 19 mm diameter headed studs shall conform to Article 1006.32 of the Standard Specifications and shall be granular or solid flux filled automatically end welded.
 - 10 mm diameter threaded studs automatically end welded shall conform to Article 1052 (e) of the Standard Specifications.
 - All dimensions are in millimeters (mm) except as noted.

FINGER PLATE AT NORTH ABUTMENT
 CH-15 OVER ILLINOIS RIVER
 F.A.U. RTE. 268A (CH-15) SECTION 10
 LA SALLE COUNTY STA. 1+522.794
 STRUCTURE NUMBER 050-0219

CDI CLARK DIETZ, INC.
 ENGINEERS ARCHITECTS

CHAMPAIGN, ILLINOIS CHICAGO, ILLINOIS

ALL DIMENSIONS SHOWN ARE TO BE OBTAINED BY SOLID MEASUREMENT OF THE WORK.

REVISIONS: M.J.M. DATE: 10/20/20
 DRAWN BY: M.F.V. DATE: 2-15-97
 CHECKED BY: M.J.F.
 DESIGNED BY: S.C.J.
 DRAWING NUMBER: S-25

MODEL: Default
 FILE NAME: c:\pwwork\wcd\illinois.gov\oladete\oladete\140682\0366T10.dgn

| | | | | | |
|-----------|-------------------|----------|-----------|---------|---|
| USER NAME | Oladete,O.Popoola | DESIGNED | RW | REVISED | - |
| | | DRAWN | RW | REVISED | - |
| | | CHECKED | JS | REVISED | - |
| PLOT DATE | 3/18/2026 | DATE | 8/20/2025 | REVISED | - |

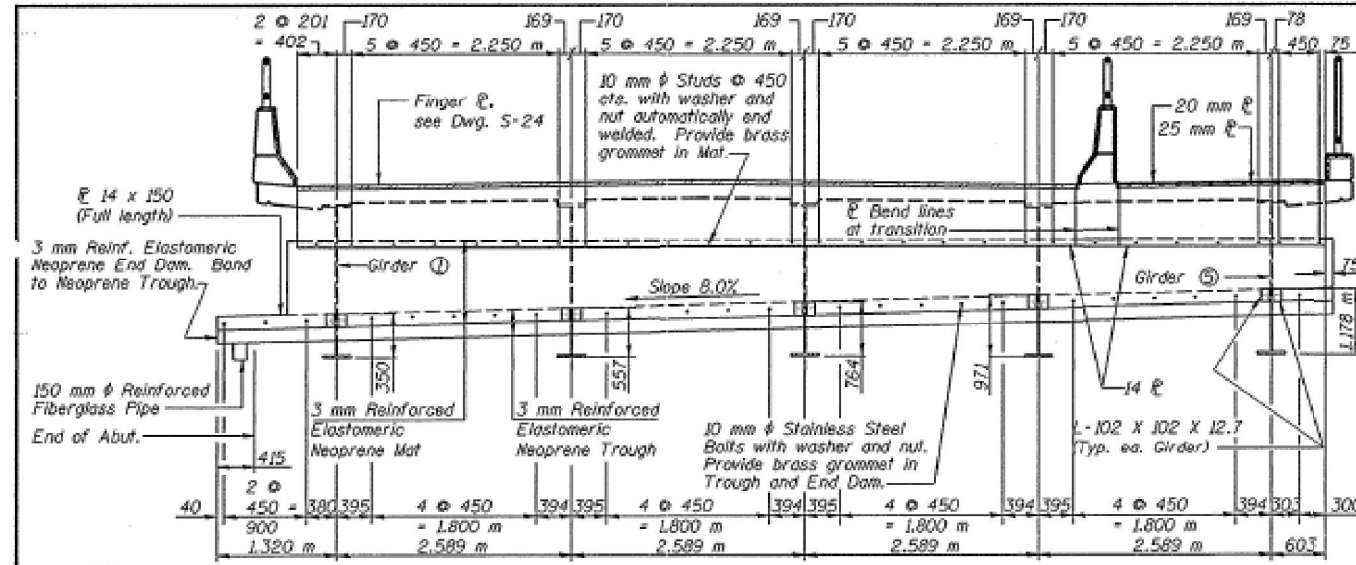
STATE OF ILLINOIS
 DEPARTMENT OF TRANSPORTATION

EXISTING STRUCTURE PLANS
 FOR STRUCTURE NO. 050-0219

SCALE: SHEET 4 OF 6 SHEETS STA. TO STA.

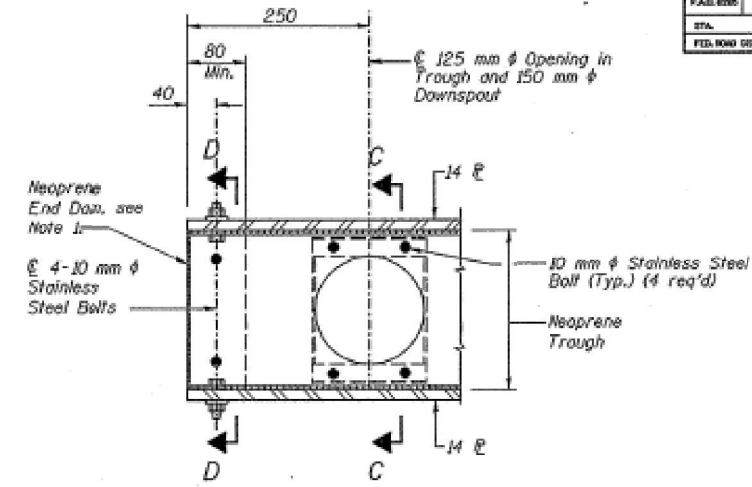
| | | | | |
|---------------------------|-----------|---------|--------------|-----------|
| F.A.S. RTE. | SECTION | COUNTY | TOTAL SHEETS | SHEET NO. |
| 268A | (1B-1)BRR | LASALLE | 11 | 9 |
| CONTRACT NO. 66T10 | | | | |
| ILLINOIS FED. AID PROJECT | | | | |

| | | | | |
|--------------|-----------|----------|--------------|--------------------|
| DATE NO. | SECTION | QUANTITY | TOTAL SHEETS | SHEET NO. |
| 100 | 55 | | 100 | 55 |
| FACILITY NO. | LA SALLE | TE STA. | ILLINOIS | PROJECT |
| 268A | (1B-1)BRR | | LASALLE | CONTRACT NO. 66T10 |

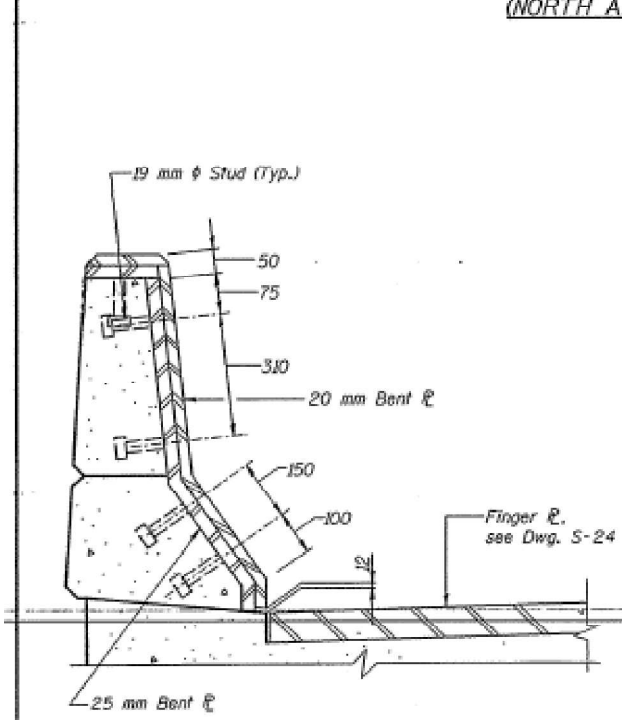


Note:
See Drawing S-46 for additional drainage details.

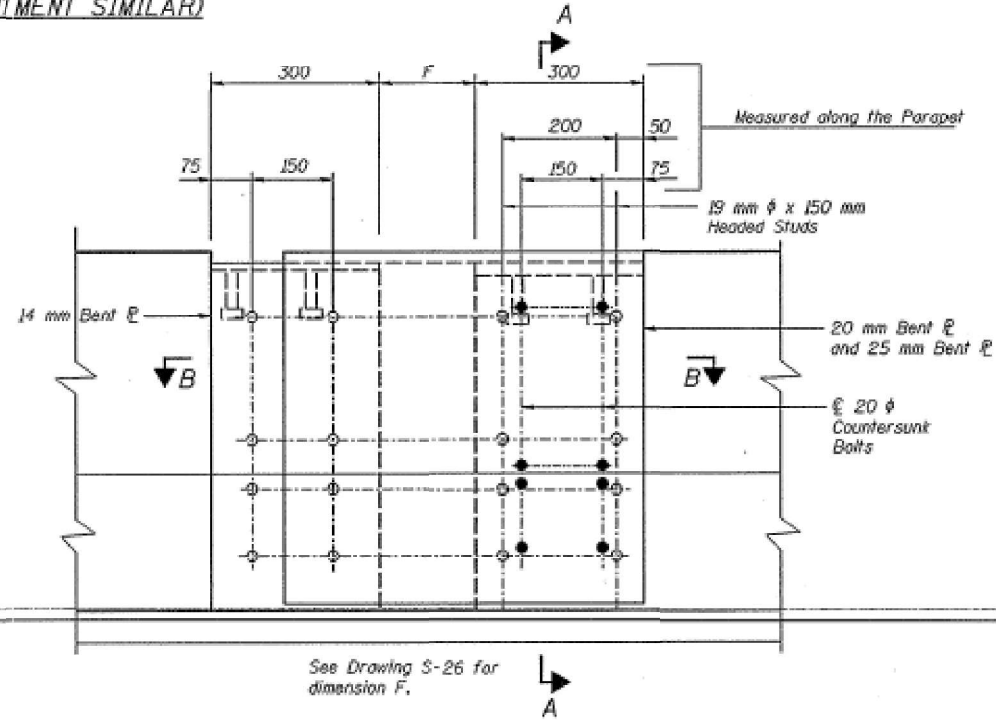
SECTION AT TROUGH AT PIER NO. 2 AND NO. 5
(NORTH ABUTMENT SIMILAR)



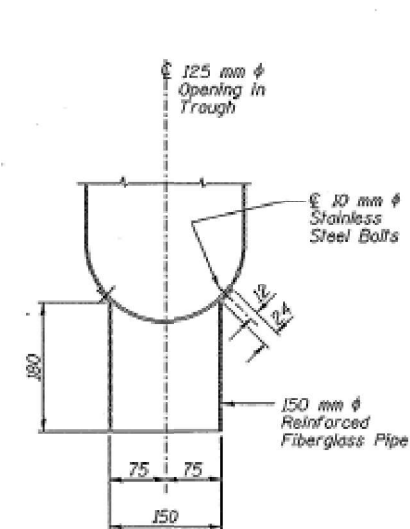
SECTION AT DOWNSPOUT



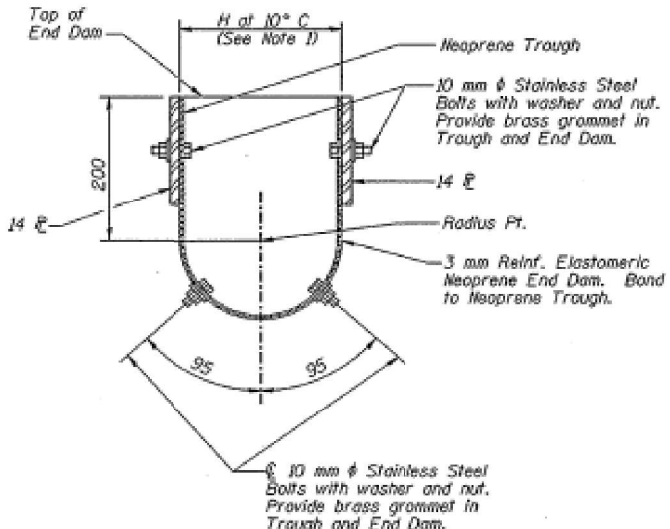
SECTION A-A



WEST PARAPET SLIDING PLATE DETAIL
(East Parapet Similar)



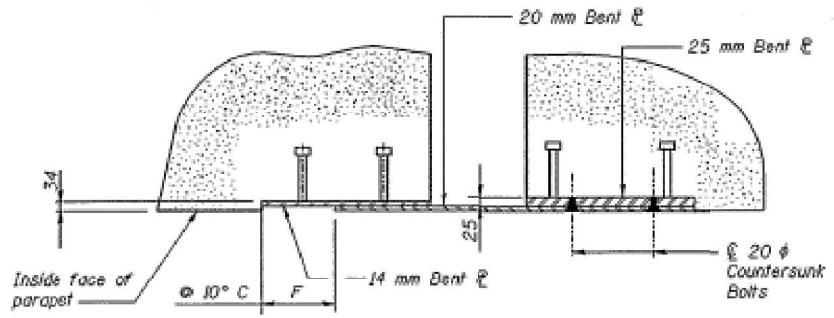
SECTION C-C



SECTION D-D

TABLE OF VARIABLES

| LOCATION | H |
|-----------|-----|
| Pier #2 | 192 |
| Pier #5 | 222 |
| No. Abut. | 156 |



SECTION B-B

- Notes:
- Provide 180 mm of excess neoprene at top of End Dam for expansion.
 - All dimensions are in millimeters (mm) except as noted.

PARAPET SLIDING PLATE AND DRAINAGE TROUGH DETAILS
CH-15 OVER ILLINOIS RIVER
F.A.S. RTE. 6265 (CH-15) SECTION 10
LA SALLE COUNTY STA. 1+522.794
STRUCTURE NUMBER 050-0219

CDI CLARK DIETZ, INC.
ENGINEERS ARCHITECTS
CHICAGO, ILLINOIS CHICAGO, ILLINOIS

DATE: 2-15-17
DRAWING NUMBER: S-27

MODEL: Default
FILE NAME: c:\pwworkspace\illinois.gov\oladete.o.popoola\1140682\0366T10.dgn

| | | |
|-------------------------------|------------------|-----------|
| USER NAME = Oladete,O.Popoola | DESIGNED - RW | REVISED - |
| | DRAWN - RW | REVISED - |
| | CHECKED - JS | REVISED - |
| PLOT DATE = 3/18/2026 | DATE - 8/20/2025 | REVISED - |

STATE OF ILLINOIS
DEPARTMENT OF TRANSPORTATION

EXISTING STRUCTURE PLANS
FOR STRUCTURE NO. 050-0219

SCALE: SHEET 6 OF 6 SHEETS STA. TO STA.

| | | | | |
|------------------|-------------------|----------------|------------------|--------------|
| F.A.S. RTE. 268A | SECTION (1B-1)BRR | COUNTY LASALLE | TOTAL SHEETS 11 | SHEET NO. 11 |
| ILLINOIS | | | FED. AID PROJECT | |