

FOR INDEX OF SHEETS, SEE SHEET NO. 2

PROJECT LOCATED IN VILLAGE OF RINGWOOD

TRAFFIC DATA (IL 31):
FUNCTIONAL CLASSIFICATION
PRINCIPAL ARTERIAL
2023 ADT = 7,600 VPD
POSTED AND DESIGN SPEED LIMIT: 55 MPH
P.V. = 94.7% S.U. = 2.3% M.U. = 3.0%



SINGH & ASSOCIATES, INC.
GREGORY GEDEMER, P.E.
062-062156

DATE: 11/30/2025
SIGNATURE AND SEAL
APPLIES TO DRAWINGS:
13-14

ARDMORE RODERICK
YUN S. KIM, P.E.
062-059992

DATE: 11/30/2025
SIGNATURE AND SEAL
APPLIES TO DRAWINGS:
1-12



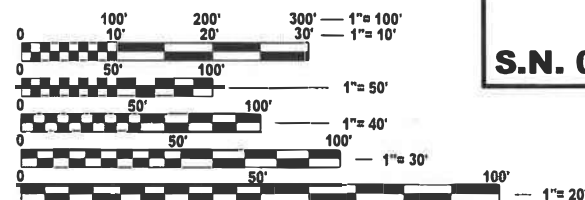
ARDMORE RODERICK
SHAWN T. BRODASKI, S.E.
81-7569

DATE: 11/30/2026
SIGNATURE AND SEAL
APPLIES TO DRAWINGS:
15-24



PROJECT LOCATION
IL 31 (RICHMOND ROAD)
OVER NIPPERSINK CREEK

S.N. 056-0037



FULL SIZE PLANS HAVE BEEN PREPARED USING STANDARD
ENGINEERING SCALES. REDUCED SIZED PLANS WILL NOT
CONFORM TO STANDARD SCALES. IN MAKING MEASUREMENTS
ON REDUCED PLANS, THE ABOVE SCALES MAY BE USED.

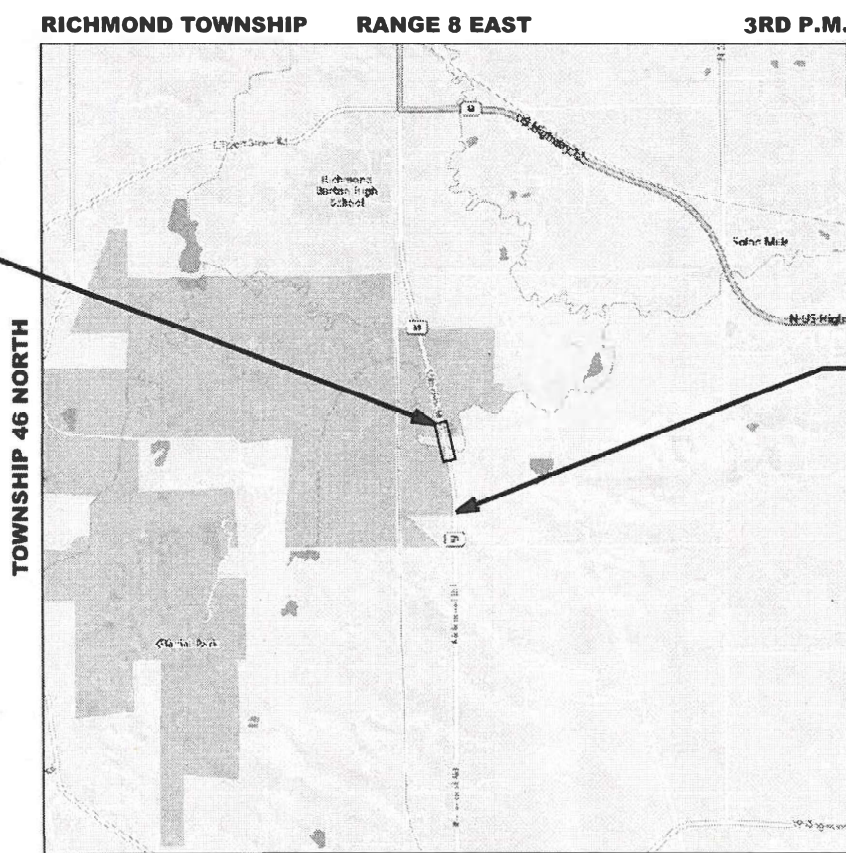
J.U.L.I.E.
JOINT UTILITY LOCATION INFORMATION FOR EXCAVATION
1-800-892-0123
OR 811

PROJECT ENGINEER: RODRIGO LEDEZMA, P.E. (847) 805-4580
PROJECT MANAGER: J. ALAN MIDY, P.E. (847) 221-3056
CONTRACT NO. 62Y05

STATE OF ILLINOIS
DEPARTMENT OF TRANSPORTATION

PROPOSED
HIGHWAY PLANS
FAP ROUTE 336 IL 31 (RICHMOND ROAD)
OVER NIPPERSINK CREEK
SECTION: (111-BI) BDR,BJR 25
PROJECT NO.: BR-Q0R5(798)
BRIDGE DECK OVERLAY,
BRIDGE JOINT REPLACE / REPAIR
MCHENRY COUNTY

C-91-172-25



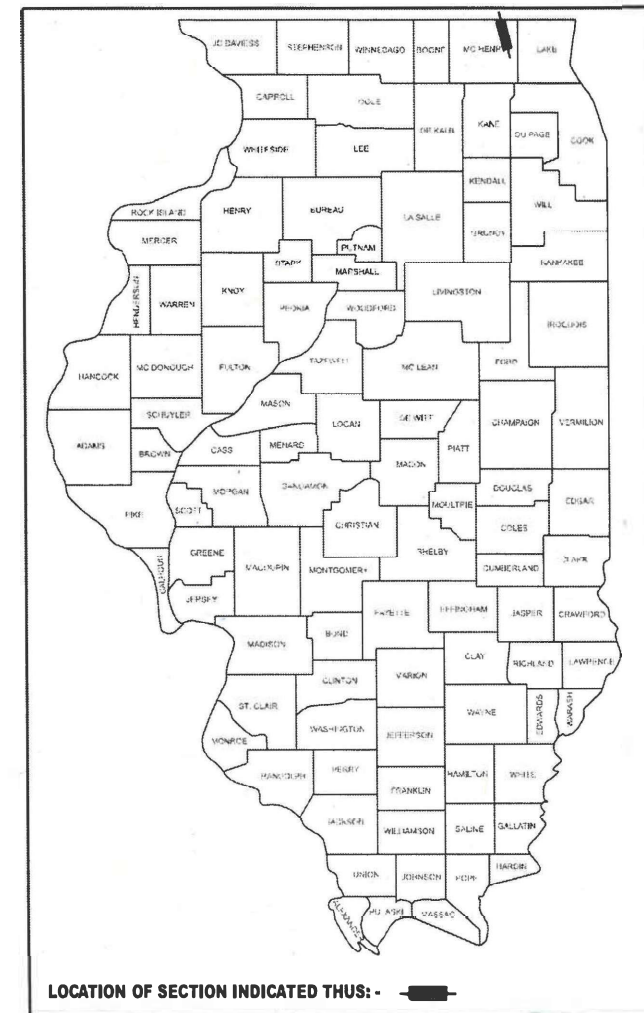
SECTION 33

LOCATION MAP
(NOT TO SCALE)

GROSS LENGTH = 1050 FT. = 0.20 MILE
NET LENGTH = 1050 FT. = 0.20 MILE

F.A.P. RTE.	SECTION	COUNTY	TOTAL SHEETS	SHEET NO.
336	(111-BI) BDR,BJR 25	MCHENRY	33	1
		ILLINOIS	CONTRACT NO. 62Y05	

D-91-110-25



LOCATION OF SECTION INDICATED THUS: -



Ardmore Roderick



SINGH + ASSOCIATES, INC.
CONSULTING ENGINEERS

STATE OF ILLINOIS
DEPARTMENT OF TRANSPORTATION

SUBMITTED Aug 11th 2025
Yun S. Kim REGIONAL ENGINEER
October 3rd 2025
Seo E. A. Etk ENGINEER OF DESIGN AND ENVIRONMENT
October 3rd 2025
Yun S. Kim DIRECTOR OF HIGHWAYS PROJECT IMPLEMENTATION

PRINTED BY THE AUTHORITY
OF THE STATE OF ILLINOIS

REV-SEP

INDEX OF SHEETS

SHEET NO.	DESCRIPTION
1	COVER SHEET
2	INDEX OF SHEETS, GENERAL NOTES, AND HIGHWAY STANDARDS
3-6	SUMMARY OF QUANTITIES
7	REMOVAL AND EROSION AND SEDIMENT CONTROL PLAN
8	ROADWAY, PAVEMENT MARKING, AND LANDSCAPE PLAN
9-12	MAINTENANCE OF TRAFFIC PLAN
13-14	TEMPORARY TRAFFIC SIGNALS PLAN
15-25	BRIDGE REPAIR PLANS (STRUCTURE NO. 056-0037)
26	BD-32: BUTT JOINT AND HMA TAPER DETAILS
27	BE-800: TEMPORARY LIGHT POLE DETAILS
28-29	BE-805: TEMPORARY LIGHTING AND TRAFFIC SIGNALS FOR SINGLE LANE STAGING (EDITED)
30	TC-11: TYPICAL APPLICATIONS RAISED REFLECTIVE PAVEMENT MARKERS (SNOW-PLOW RESISTANT)
31	TC-13: DISTRICT ONE TYPICAL PAVEMENT MARKINGS
32	TC-16: SHORT TERM PAVEMENT MARKING LETTERS AND SYMBOLS
33	TC-22: ARTERIAL ROAD INFORMATION SIGN

LIST OF HIGHWAY STANDARDS

STANDARD NO.	DESCRIPTION
000001-09	STANDARD SYMBOLS, ABBREVIATIONS, AND PATTERNS
001001-02	AREAS OF REINFORCEMENT BARS
001006	DECIMALS OF AN INCH AND OF A FOOT
280001-07	TEMPORARY EROSION CONTROL SYSTEMS
630001-13	STEEL PLATE BEAM GUARDRAIL
631033-09	TRAFFIC BARRIER TERMINAL, TYPE 6B
701006-05	OFF-ROAD OPERATIONS, 2L, 2W, 15' (4.5 M) TO 24" (600 MM) FROM PAVEMENT EDGE
701201-05	LANE CLOSURE, 2L, 2W, DAY ONLY, FOR SPEEDS ≥ 45 MPH
701301-04	LANE CLOSURE, 2L, 2W, SHORT TERM OPERATIONS
701311-03	LANE CLOSURE, 2L, W2, MOVING OPERATIONS - DAY ONLY
701901- 11	TRAFFIC CONTROL DEVICES
704001- 08	LANE CLOSURE, FREEWAY/EXPRESSWAY
725001-01	OBJECT AND TERMINAL MARKERS
780001-05	TYPICAL PAVEMENT MARKINGS
781001-04	TYPICAL APPLICATIONS RAISED REFLECTIVE PAVEMENT MARKERS
782006-01	GUARDRAIL AND BARRIER WALL REFLECTOR MOUNTING DETAILS
880001-01	SPAN WIRE MOUNTED SIGNALS AND FLASHING BEACON INSTALLATION

COMMITMENTS

THERE ARE NO COMMITMENTS FOR THIS PROJECT.

GENERAL NOTES

1.

BEFORE STARTING ANY EXCAVATION, THE CONTRACTOR SHALL CALL "J.U.L.I.E." AT (800) 892-0123 OR 811 FOR FIELD LOCATIONS OF BURIED ELECTRIC, TELEPHONE, AND GAS FACILITIES (48 HOURS NOTIFICATION IS REQUIRED).
2.

THE CONTRACTOR SHALL CONTACT THE DISTRICT TRAFFIC CONTROL SUPERVISOR AT KALPANA.KANNAN-HOSADURGA@ILLINOIS.GOV A MINIMUM OF 72 HOURS IN ADVANCE OF BEGINNING WORK.
3.

THE CONTRACTOR SHALL COORDINATE CONSTRUCTION ACTIVITIES WITH UTILITY COMPANIES, THE VILLAGE OF RINGWOOD, AND MCHENRY COUNTY.
4.

THE CONTRACTOR WILL NOT BE ALLOWED TO SET UP A YARD OR FIELD OFFICE ON STATE PROPERTY WITHOUT WRITTEN PERMISSION FROM THE DEPARTMENT.
5.

DO NOT SCALE PLANS FOR CONSTRUCTION DIMENSIONS.
6.

BUTT JOINTS WILL BE INSTALLED AT THE ENDS OF ALL RESURFACING (WHERE RESURFACING MEETS EXISTING PAVEMENT) ACCORDING TO THE "BUTT JOINT AND HMA TAPER DETAILS" INCLUDED IN THE PLANS, UNLESS OTHERWISE SPECIFIED.
7.

BEFORE BEGINNING ANY WORK, THE CONTRACTOR SHALL RETAIN AND RECORD FOR FUTURE REFERENCE, ALL EXISTING PAVEMENT MARKING LINES (AND RAISED REFLECTIVE PAVEMENT MARKERS) IN ORDER THAT THESE LOCATIONS CAN BE RE-ESTABLISHED FOR STRIPING. EXACT LOCATIONS OF ALL PAVEMENT MARKINGS SHALL BE AS DIRECTED BY THE ENGINEER.
8.

WHEN MILLED PAVEMENT IS OPEN TO TRAFFIC, THE MAXIMUM GRADE DIFFERENTIAL BETWEEN PASSES OF THE MILLING MACHINE SHALL NOT EXCEED 1 1/2 INCHES (40MM) WHERE THE SPEED LIMIT IS 40 MPH (80 HM/H) OR LESS AND 1 INCH (25 MM) WHERE THE SPEED LIMIT IS GREATER THAN 40 MPH (80 KM/H). WITH WRITTEN APPROVAL FROM THE ENGINEER, A MXIMUM GRADE DIFFERENTIAL OF 3 INCHES (75 MM) MAY BE ALLOWED IF THE EDGE OF THE MILLING IS SLOPED A MINIMUM 1:3 (V:H) OR A NOTCHED LONGITUDINAL WEDGE IS USED.
9.

THE RESIDENT ENGINEER SHALL CONTACT BRANDY KENNEDY, AREA TRAFFIC FIELD ENGINEER, AT BRANDY.KENNEDY@ILLINOIS.GOV, A MINIMUM OF TWO (2) WEEKS PRIOR TO THE PLACEMENT OF PERMANENT PAVEMENT MARKINGS.
10.

ANY DAMAGE TO EXISTING PAVEMENT MARKINGS OR RAISED REFLECTIVE PAVEMENT MARKERS OUTSIDE THE REMOVAL LINE SHOWN ON THE PLANS SHALL BE REPLACED AT THE CONTRACTOR'S EXPENSE.
11.

ALL PAVEMENT MARKINGS SHALL BE PLACED THROUGHOUT THE IMPROVEMENT ACCORDING TO THE "DISTRICT 1 TYPICAL PAVEMENT MARKING" SHEET INCLUDED IN THE PLANS, UNLESS OTHERWISE SPECIFIED.
12.

THE CONTRACTOR SHALL CONTACT THE DEPARTMENT'S ELECTRICAL MAINTENANCE CONTRACTOR, MEADE ELECTRIC COMPANY, AT (773) 287-7672 PRIOR TO THE START OF CONSTRUCTION TO LOCATE ALL IDOT ELECTRICAL EQUIPMENT AND UNDERGROUND CABLES.
13.

IT SHALL BE THE CONTRACTOR'S RESPONSIBILITY TO VERIFY ALL DIMENSIONS AND EXISTING CONDITIONS IN THE FIELD PRIOR TO CONSTRUCTION AND ORDERING MATERIALS.
14.

DURING CONSTRUCTION OPERATION, IF ANY LOOSE MATERIAL IS DEPOSITED IN THE FLOW LINE OF DRAINAGE STRUCTURES SUCH THAT THE NATURAL FLOW OF WATER IS OBSTRUCTED THE MATERIAL SHALL BE REMOVED A THE CLOSE OF EACH WORKDAY. AT THE CONCLUSION OF CONSTRUCTION OPERATIONS, ALL UTILITY STRUCTURES SHALL BE FREE OF DUST AND DEBRIS. THE WORK SPECIFIED ABOVE WILL NOT BE PAID SEPARATELY BUT SHALL BE INCLUDED IN THE COST OF CONTRACT.
15.

THE "ROAD CONSTRUCTION AHEAD" SIGNS SHALL REMAIN INSTALLED UNTIL THE COMPLETION OF THE PROJECT OR WHEN NO ROADWAY HAZARDS REMAIN WITHIN THE WORK ZONE.
16.

PAVEMENT MARKING TAPE, TYPE IV SHALL BE USED FOR SHORT TERM PAVEMENT MARKINGS ON ALL FINAL SURFACES.
17.

EXISTING FACILITIES WITHIN THE LIMITS OF CONSTRUCTION TO BE PROTECTED FROM DAMAGE BY CONTRACTOR. IF EXCAVATION WILL BE PERFORMED NEAR POLES OR LARGE EQUIPMENT WILL BE USED NEAR EXISTING OVERHEAD LINES, FACILITY PROTECTION MAY BE REQUIRED. IF FACILITY PROTECTION IS REQUIRED, PLEASE CALL 1-800-334-7661 TO CREATE A TICKET FOR LINE AND/OR POLE PROTECTION AS SOON AS POSSIBLE.

MODEL - General Notes (Sheet)
FILE NAME: \\RODSTR\Company\Files\TRG\Business\Clients\IDOT\Projects\22-145 PTB 205-003 V-V\Work Order 07\400 CADD\402 CADD_Sheets\0162Y05-Sht-Gen-Notes.dgn



USER NAME = rileywhite	DESIGNED - RBW	REVISED -
	DRAWN - RBW	REVISED -
	CHECKED - YSK	REVISED -
PLOT DATE = 09/23/2025	DATE - 08/08/2025	REVISED -

STATE OF ILLINOIS
DEPARTMENT OF TRANSPORTATION

GENERAL NOTES, INDEX OF SHEETS, HIGHWAY STANDARDS,
AND COMMITMENTS

SCALE: NONE SHEET 1 OF 1 SHEETS STA. TO STA.

F.A.P RTE.	SECTION	COUNTY	TOTAL SHEETS	SHEET NO.
336	(111-B1) BDR,BJR 25	MCHENRY	33	02
		CONTRACT NO. 62Y05		
		ILLINOIS	FED. AID PROJECT	

MODEL: SQQ-01 [Sheet]
FILE NAME: \\RODSTR\CompanyFiles\TRC\Business\Clients\DOT\Projects\22-146 PTB 205-003 V-V\Work Order 07400 CADD\02 CADD_Sheets\0182Y05-Sht-SQQ.dgn

CODE NO.	ITEM	UNIT	TOTAL QUANTITY	CONSTRUCTION CODE	
				80% FED, 20% STATE	80% FED, 20% STATE
				BRIDGE	BRIDGE
				0059	0059
				S.N. 056-0037	S.N. 056-0037
25000210	SEEDING, CLASS 2A	ACRE	0.25		0.25
25000400	NITROGEN FERTILIZER NUTRIENT	POUND	23		23
25000500	PHOSPHORUS FERTILIZER NUTRIENT	POUND	23		23
25000600	POTASSIUM FERTILIZER NUTRIENT	POUND	23		23
25100630	EROSION CONTROL BLANKET	SQ YD	392		392
28000250	TEMPORARY EROSION CONTROL SEEDING	POUND	9		9
28000400	PERIMETER EROSION BARRIER	FOOT	690		690
40600290	BITUMINOUS MATERIALS (TACK COAT)	POUND	146		146
40600370	LONGITUDINAL JOINT SEALANT	FOOT	210		210
40600982	HOT-MIX ASPHALT SURFACE REMOVAL - BUTT JOINT	SQ YD	324		324
40604062	HOT-MIX ASPHALT SURFACE COURSE, IL-9.5, MIX "D", N70	TON	19		19
50102400	CONCRETE REMOVAL	CU YD	12.0		12.0
50300255	CONCRETE SUPERSTRUCTURE	CU YD	11.2		11.2
50300300	PROTECTIVE COAT	SQ YD	946		946

* = SPECIALITY ITEM

MODEL: SQ-Q02 [Sheet]
FILE NAME: \\RODSTR\CompanyFiles\TRC\Business\Clients\DOT\Projects\22-146 PTB 205-003 V-V\Work Order 07400 CADD\02 CADD_Sheets\0182Y05-Sht-SQ-Q.dgn

CODE NO.	ITEM	UNIT	TOTAL QUANTITY	CONSTRUCTION CODE	
				80% FED, 20% STATE	80% FED, 20% STATE
				BRIDGE	BRIDGE
				0059	0059
				S.N. 056-0037	S.N. 056-0037
50800205	REINFORCEMENT BARS, EPOXY COATED	POUND	2450		2450
50800515	BAR SPLICERS	EACH	32		32
52000110	PREFORMED JOINT STRIP SEAL	FOOT	118		118
58700300	CONCRETE SEALER	SQ FT	130		130
* 63000001	STEEL PLATE BEAM GUARDRAIL, TYPE A, 6 FOOT POSTS	FOOT	637.5		637.5
* 63100089	TRAFFIC BARRIER TERMINAL, TYPE 6B	EACH	1		1
63200310	GUARDRAIL REMOVAL	FOOT	638		638
67100100	MOBILIZATION	L SUM	1		1
* 70106500	TEMPORARY BRIDGE TRAFFIC SIGNALS	EACH	1	1	
70106700	TEMPORARY RUMBLE STRIPS	EACH	12		12
70107025	CHANGEABLE MESSAGE SIGN	CAL DA	168		168
70300150	SHORT TERM PAVEMENT MARKING REMOVAL	SQ FT	826		826
70300221	TEMPORARY PAVEMENT MARKING - LINE 4" - PAINT	FOOT	1908		1908
70307120	TEMPORARY PAVEMENT MARKING - LINE 4" - TYPE IV TAPE	FOOT	2205		2205

* = SPECIALITY ITEM



USER NAME = rileywhite	DESIGNED - RBW	REVISED -
	DRAWN - RBW	REVISED -
	CHECKED - YSK	REVISED -
PLOT DATE = 08/08/2025	DATE - 08/08/2025	REVISED -

STATE OF ILLINOIS
DEPARTMENT OF TRANSPORTATION

SUMMARY OF QUANTITIES

SCALE: NONE SHEET 2 OF 4 SHEETS STA. TO STA.

F.A.P RTE.	SECTION	COUNTY	TOTAL SHEETS	SHEET NO.
336	(111-B1) BDR,BJR 25	MCHENRY	33	04
CONTRACT NO. 62Y05				
ILLINOIS FED. AID PROJECT				

MODEL: SQQ.03 [Sheet]
FILE NAME: \\RODSTR\CompanyFiles\TRC\Business\Clients\DOT\Projects\22-146 PTB 205-003 V-V\Work Order 07400 CADD\02 CADD_Sheets\0182Y05-Sht-SQQ.dgn

CODE NO.	ITEM	UNIT	TOTAL QUANTITY	CONSTRUCTION CODE	
				80% FED, 20% STATE	80% FED, 20% STATE
				BRIDGE	BRIDGE
				0059	0059
				S.N. 056-0037	S.N. 056-0037
70307210	TEMPORARY PAVEMENT MARKING - LINE 24"- TYPE IV TAPE	FOOT	49		49
* 78000200	THERMOPLASTIC PAVEMENT MARKING - LINE 4"	FOOT	1532		1532
* 78009004	MODIFIED URETHANE PAVEMENT MARKING - LINE 4"	FOOT	376		376
* 78100100	RAISED REFLECTIVE PAVEMENT MARKER	EACH	3		3
* 78200005	GUARDRAIL REFLECTORS, TYPE A	EACH	15		15
78300200	RAISED REFLECTIVE PAVEMENT MARKER REMOVAL	EACH	3		3
78300202	PAVEMENT MARKING REMOVAL - WATER BLASTING	SQ FT	1259		1259
* X0326276	TEMPORARY LIGHTING FOR SINGLE LANE STAGING	L SUM	1	1	
X5030250	BRIDGE DECK GROOVING (LONGITUDINAL)	SQ YD	445		445
X6310301	REPAIR TRAFFIC BARRIER TERMINAL TYPE 1 (SPECIAL)	EACH	3		3
X6700407	ENGINEER'S FIELD OFFICE, TYPE A (D1)	CAL MO	12		12
X7010216	TRAFFIC CONTROL AND PROTECTION, (SPECIAL)	L SUM	1		1
X7200061	TEMPORARY INFORMATION SIGNING	SQ FT	412		412
X7830050	RAISED REFLECTIVE PAVEMENT MARKER, REFLECTOR REMOVAL	EACH	8		8

* = SPECIALITY ITEM



USER NAME = rileywhite	DESIGNED - RBW	REVISED -
	DRAWN - RBW	REVISED -
	CHECKED - YSK	REVISED -
PLOT DATE = 08/08/2025	DATE - 08/08/2025	REVISED -

STATE OF ILLINOIS
DEPARTMENT OF TRANSPORTATION

SUMMARY OF QUANTITIES

SCALE: NONE SHEET 3 OF 4 SHEETS STA. TO STA.

F.A.P RTE.	SECTION	COUNTY	TOTAL SHEETS	SHEET NO.
336	(111-B1) BDR,BJR 25	MCHENRY	33	05
CONTRACT NO. 62Y05				
ILLINOIS FED. AID PROJECT				

MODEL: SOQ-03 [Sheet]

[illegible]

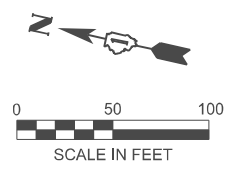
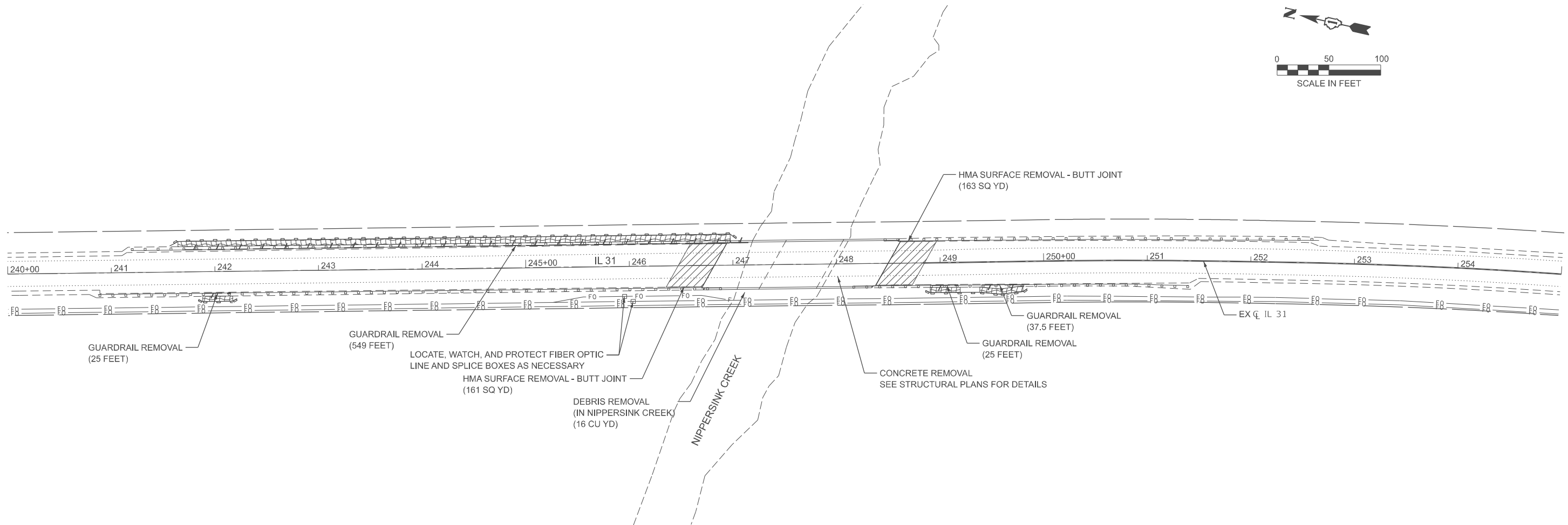
* = SPECIALITY ITEM

FILE NAME: 

USER NAME = rileywhite	DESIGNED - RBW	REVISED -	<div>STATE OF ILLINOIS DEPARTMENT OF TRANSPORTATION</div>	<div>SUMMARY OF QUANTITIES</div>				F A P RTE.	SECTION	COUNTY	TOTAL SHEETS	SHEET NO.
	DRAWN - RBW	REVISED -						336	(111-BI) BDR,BJR 25	MCHENRY	33	06
	CHECKED - YSK	REVISED -		<div>CONTRACT NO. 62Y05</div>								
PLOT DATE = 08/08/2025	DATE - 08/08/2025	REVISED -										
				SCALE: NONE	SHEET 4	OF 4	SHEETS	STA.	TO STA.			

NOTES:

1.
- IN PREPARATION FOR TEMPORARY TRAFFIC STAGING PAVEMENT MARKINGS, REMOVE EXISTING PAVEMENT MARKINGS USING PAVEMENT MARKING REMOVAL - WATER BLASTING (78300202).
2.
- FOR REMOVING RAISED REFLECTORS OUTSIDE OF THE ASPHALT PAVEMENT REMOVAL LIMITS, USE RAISED REFLECTIVE PAVEMENT MARKER, REFLECTOR REMOVAL (X7830050).



LEGEND

-
- LINEAR ITEM REMOVAL
-
- ASPHALT SURFACE REMOVAL
-
- EROSION CONTROL BLANKET
-
- TEMPORARY EROSION CONTROL SEEDING
-
- PERIMETER EROSION BARRIER

MODEL: Removals and ESC (Sheet)
FILE NAME: T:\TRG\Business\Clients\IDOT\Projects\22-145 PTB 205-003 V\Work Order 071400 CADD\402 CADD_Sheets\ID162Y05-SI+Rem+ESC.dgn



USER NAME = rileywhite

DESIGNED - RBW

REVISED -

DRAWN - RBW

REVISED -

CHECKED - YSK

REVISED -

PLOT DATE = 8/5/2025

DATE - 08/08/2025

REVISED -

STATE OF ILLINOIS
DEPARTMENT OF TRANSPORTATION

ROADWAY REMOVALS AND EROSION AND SEDIMENT CONTROL PLAN

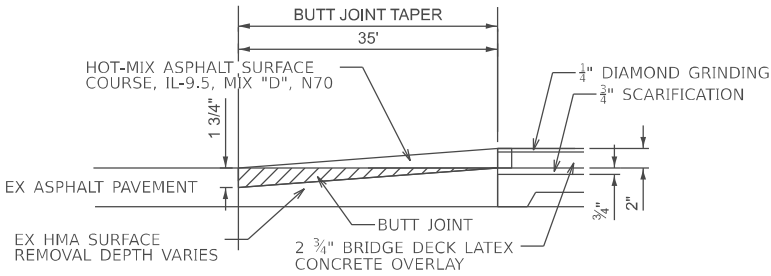
SCALE: 1"=50'

SHEET 1 OF 1 SHEETS

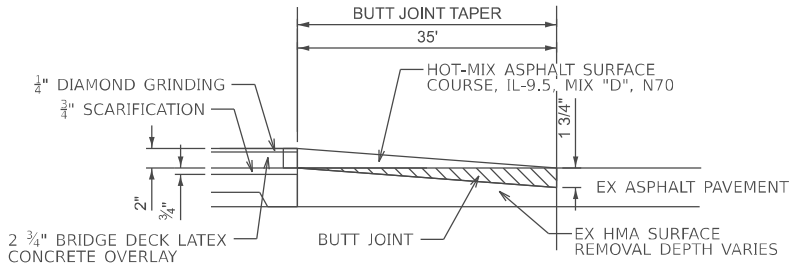
STA. 240+00.00 TO STA. 255+00.00

F.A.P RTE.	SECTION	COUNTY	TOTAL SHEETS	SHEET NO.
336	(111-BI) BDR,BJR 25	MCHENRY	33	07
CONTRACT NO. 62Y05				
ILLINOIS FED. AID PROJECT				

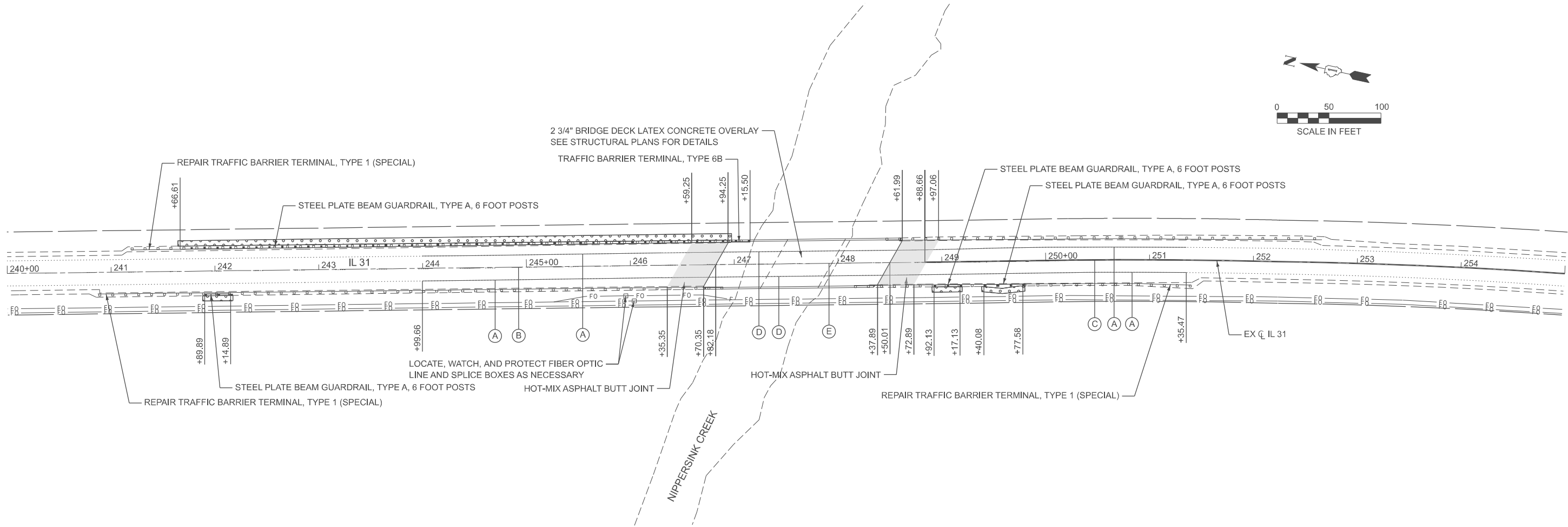
MODEL: Proposed [Sheet]
FILE NAME: T:\TRG\Business\Clients\IDOT\Projects\22-145 PTB 205-003 V-A\Work Order 071400 CADD\402 CADD_Sheets\ID162Y05-SH+Rdy.dgn



NORTH BUTT JOINT DETAIL



SOUTH BUTT JOINT DETAIL



LEGEND

- STEEL PLATE BEAM GUARDRAIL, TYPE A, 6 FOOT POSTS
- HOT-MIX ASPHALT BUTT JOINT
- SEEDING, CLASS 2A
- NITROGEN FERTILIZER NUTRIENT
- PHOSPHORUS FERTILIZER NUTRIENT
- POTASSIUM FERTILIZER NUTRIENT

- (A) THERMOPLASTIC PAVEMENT MARKING - LINE 4" (WHITE, SOLID)
- (B) THERMOPLASTIC PAVEMENT MARKING - LINE 4" (YELLOW, 10' DASH, 30' SKIP)
- (C) THERMOPLASTIC PAVEMENT MARKING - LINE 4" (YELLOW, 1 SOLID, 1 - 10' DASH W/ 30' SKIP, @ 11" C-C)
- (D) MODIFIED URETHANE PAVEMENT MARKING - LINE 4" (WHITE, SOLID)
- (E) MODIFIED URETHANE PAVEMENT MARKING - LINE 4" (YELLOW, 10' DASH, 30' SKIP)

- NOTES:
- MODIFIED URETHANE PAVEMENT MARKINGS SHALL BE USED ON ALL PCC SURFACES.
 - THERMOPLASTIC PAVEMENT MARKINGS SHALL BE USED ON ALL HMA SURFACES.
 - THE CONTRACTOR SHALL INSTALL ALL PAVEMENT MARKINGS IN ACCORDANCE WITH D1 DETAIL TC-13.
 - THE CONTRACTOR SHALL INSTALL ALL RAISED REFLECTIVE PAVEMENT MARKERS IN ACCORDANCE WITH D1 DETAIL TC-11.

HOT-MIX ASPHALT MIXTURE REQUIREMENTS

MIXTURE TYPE		QUALITY MANAGEMENT PROGRAM (QMP)	
HOT-MIX ASPHALT BUTT JOINT			
HOT-MIX ASPHALT SURFACE COURSE, IL-9.5, MIX "D", N70 (2")		4% AT 70 GYR.	QC/QA
QMP DESIGNATION: QUALITY CONTROL/QUALITY ASSURANCE (QC/QA); QUALITY CONTROL FOR PERFORMANCE (QCP); PAY FOR PERFORMANCE (PFP)			

- NOTE 1: THE UNIT WEIGHT USED TO CALCULATE ALL HMA SURFACE MIXTURE QUANTITIES IS 112 LBS/SQ YD/IN.
- NOTE 2: THE "AC TYPE" FOR POLYMERIZED HMA MIXES SHALL BE "SBS/SBR PG 76-22" AND FOR NON-POLYMERIZED HMA THE "AC TYPE" SHALL BE "PG 64-22" UNLESS MODIFIED BY RECLAIMED MATERIALS SPECIFICATIONS.
- NOTE 3: THE LONGITUDINAL JOINT SEALANT SHALL BE PLACED UNDER THE HMA SURFACE COURSE IL-9.5, MIX D, N70.



USER NAME = rileywhite	DESIGNED - RBW	REVISED -
	DRAWN - RBW	REVISED -
	CHECKED - YSK	REVISED -
PLOT DATE = 8/6/2025	DATE - 08/08/2025	REVISED -

STATE OF ILLINOIS
DEPARTMENT OF TRANSPORTATION

PROPOSED ROADWAY, PAVEMENT MARKING, AND LANDSCAPE PLAN

SCALE: 1"=50'		SHEET 1 OF 1 SHEETS		STA. 240+00.00 TO STA. 255+00.00		F.A.P RTE.	SECTION	COUNTY	TOTAL SHEETS	SHEET NO.
						336	(111-B1) BDR,BJR 25	MCHENRY	33	08
						CONTRACT NO. 62Y05				
						ILLINOIS FED. AID PROJECT				

MODEL: MOT Notes [Sheet]
FILE NAME: \\RODSTR\Company\Files\TRG\Business\Clients\IDOT\Projects\22-145 PTB 205-003 V-V\Work Order 07\400 CADD\402 CADD_Sheets\162Y05-Sht-Staging-Notes.dgn

MAINTENANCE OF TRAFFIC GENERAL NOTES

1. THE TRAFFIC CONTROL MEASURES DEPICTED IN THE PLANS ARE THE MINIMUM REQUIREMENT. ADDITIONAL TRAFFIC CONTROL DEVICES, AS SPECIFIED IN THE HIGHWAY AND DISTRICT STANDARDS, AS SHOWN IN THE INDEX OF SHEETS, AND SPECIAL PROVISIONS SHALL BE PLACED BY THE CONTRACTOR TO THE SATISFACTION OF THE ENGINEER. ALL TRAFFIC CONTROL DEVICES SHALL BE CONSIDERED INCLUDED IN THE COST OF TRAFFIC CONTROL AND PROTECTION, UNLESS OTHERWISE INDICATED WITHIN THESE GENERAL NOTES, PLANS, OR SPECIAL PROVISIONS.
2. TRAFFIC CONDITIONS, ACCIDENTS, AND OTHER UNFORESEEN EMERGENCY CONDITIONS MAY REQUIRE THE ENGINEER TO RESTRICT, MODIFY, OR REMOVE LANE CLOSURES OR CHANNELIZATION SHOWN IN THE PLANS. THE CONTRACTOR SHALL PROMPTLY RESPOND AT THE TIME OF NOTIFICATION BY THE ENGINEER.
3. THE CONTRACTOR SHALL BE REQUIRED TO MAINTAIN TRAFFIC IN ACCORDANCE WITH THE TRAFFIC CONTROL GENERAL NOTES, PLANS, SPECIAL PROVISIONS, APPLICABLE HIGHWAY & DISTRICT STANDARDS, AND AS DIRECTED BY THE ENGINEER. ANY CHANGES TO THE TRAFFIC CONTROL SHALL BE SUBMITTED TO THE ENGINEER 72 HOURS IN ADVANCE OF ANY PROPOSED CHANGE TO THE SUGGESTED STAGES OF CONSTRUCTION AND TRAFFIC CONTROL PLAN.
4. ALL EXISTING LANE LINE PAVEMENT MARKINGS AND RAISED REFLECTIVE PAVEMENT MARKER REFLECTORS LOCATED WITHIN TEMPORARY LANE CLOSURE TAPERS, LANE SHIFT TAPERS, OR IN LOCATIONS THAT CONFLICT WITH THE TEMPORARY PAVEMENT MARKING TAPE USED FOR STAGING SHALL BE REMOVED VIA WATER BLASTING WITH VACUUM RECOVERY IF THE STAGING WILL REMAIN IN PLACE FOR MORE THAN 14 DAYS. THE EXISTING PAVEMENT MARKINGS AND RAISED REFLECTIVE PAVEMENT MARKER REFLECTORS THAT WERE REMOVED SHALL BE RESTORED IN KIND AFTER THE COMPLETION OF THE STAGING.
5. IMMEDIATELY AFTER THE COMPLETION OF CONSTRUCTION, THE CONTRACTOR SHALL RESTORE ALL PERMANENT PAVEMENT MARKINGS, LANDSCAPING, SIGNS, AND OTHER TRAFFIC CONTROL DEVICES THAT WERE COVERED. IF THEY WERE REMOVED, DAMAGED, OR OTHERWISE AFFECTED BY CONSTRUCTION ACTIVITIES, THE COST TO REPAIR ANY DAMAGES WILL BE BORNE BY THE CONTRACTOR AND NOT THE RESPONSIBILITY OF THE DEPARTMENT.
6. PAVEMENT MARKING TAPE, TYPE IV (AND/OR TYPE III) SHOWN ON THE PLANS FOR ANY CONSTRUCTION STAGE THAT THE CONTRACTOR PROPOSES TO EXTEND OVER THE WINTER PERIOD SHALL MEAN MODIFIED URETHANE PAVEMENT MARKING AND WILL BE PAID FOR THEIR RESPECTIVE CONTRACT UNIT PRICE.
7. NO WORK SHALL COMMENCE UNTILL TRAFFIC CONTROL REQUIREMENTS ARE MET.
8. THE CONTRACTOR SHALL CONTACT THE DISTRICT ONE TRAFFIC CONTROL SUPERVISOR, KALPANA KANNAN-HOSADURGA, AT KALPANA.KANNAN-HOSADURGA@ILLINOIS.GOV A MINIMUM OF 72 HOURS IN ADVANCE OF BEGINNING WORK.
9. THE "ROAD CONSTRUCTION AHEAD" SIGNS SHALL REMAIN INSTALLED UNTIL THE COMPLETION OF THE PROJECT OR WHEN NO ROADWAY HAZARDS REMAIN WITHIN THE WORK ZONE.
10. THE CONTRACTOR SHALL PROVIDE ADEQUATE TEMPORARY DRAINAGE DURING ALL PHASES OF CONSTRUCTION.
11. CHANGEABLE MESSAGE SIGNS SHALL BE INSTALLED TWO WEEKS PRIOR TO ALL TRAFFIC STAGE CHANGES ON EACH APPROACH OF THE EFFECTED ROADWAY TO WARN MOTORISTS OF THE UPCOMING EVENT. THE SIGN MESSAGES SHALL BE REVISED TWO WEEKS THEREAFTER WITH MESSAGES WARNING MOTORISTS OF POTENTIAL TRAFFIC DELAYS, QUEUING, AND/OR WITH MESSAGES NOTIFYING TRAFFIC TO USE ALTERNATE ROUTES. THE SIGN LOCATIONS AND MESSAGES SHALL BE DETERMINED BY THE ENGINEER. THE CHANGEABLE MESSAGE SIGNS ARE TO REMAIN IN PLACE FOR THE DURATION OF ALL MOT STAGES. THIS WORK IS TO BE PAID FOR AT THE CONTRACT UNIT PRICE PER CALENDAR DAY "CHANGEABLE MESSAGE SIGN".

CONSTRUCTION SEQUENCING NOTES

PRE-STAGE

CONSTRUCTION:
INSTALL TEMPORARY TRAFFIC SIGNALS AS SHOWN IN THE PLANS

STAGE 1:

CONSTRUCTION:
ON THE EASTERN HALF OF THE ROADWAY, CONSTRUCT BRIDGE DECK OVERLAY, PERFORM ABUTMENT JOINT REPLACEMENT WORK, GUARDRAIL REPAIRS, AND INSTALL BUTT JOINT.

TRAFFIC:
SET UP NORTHBOUND LANE CLOSURE FOLLOWING THE MAINTENANCE OF TRAFFIC - STAGE 1 PLANS AND IDOT D1 STANDARD BE-805: TEMPORARY LIGHTING AND TRAFFIC SIGNALS FOR SINGLE LANE STAGING. PROVIDE 1 - 12' WIDE LANE AND INSTALL TRAFFIC CONTROL DEVICES AND TEMPORARY PAVEMENT MARKINGS PER TYPICAL SECTIONS AND PLANS.

STAGE 2:

CONSTRUCTION:
ON THE WESTERN HALF OF THE ROADWAY, CONSTRUCT BRIDGE DECK OVERLAY, PERFORM ABUTMENT JOINT REPLACEMENT WORK, GUARDRAIL REPAIRS, AND INSTALL BUTT JOINT.

TRAFFIC:
SET UP SOUTHBOUND LANE CLOSURE FOLLOWING THE MAINTENANCE OF TRAFFIC - STAGE 2 PLANS AND IDOT D1 STANDARD BE-805: TEMPORARY LIGHTING AND TRAFFIC SIGNALS FOR SINGLE LANE STAGING. PROVIDE 1 - 12' WIDE LANE AND INSTALL TRAFFIC CONTROL DEVICES AND TEMPORARY PAVEMENT MARKINGS PER TYPICAL SECTIONS AND PLANS.



USER NAME = rileywhite	DESIGNED - RBW	REVISED -
	DRAWN - RBW	REVISED -
	CHECKED - YSK	REVISED -
PLOT DATE = 08/08/2025	DATE - 08/08/2025	REVISED -

STATE OF ILLINOIS
DEPARTMENT OF TRANSPORTATION

MAINTENANCE OF TRAFFIC
GENERAL NOTES AND SEQUENCE OF CONSTRUCTION

SCALE: NONE SHEET 1 OF 4 SHEETS STA. TO STA.

F.A.P RTE.	SECTION	COUNTY	TOTAL SHEETS	SHEET NO.
336	(111-BJ) BDR,BJR 25	MCHENRY	33	09
CONTRACT NO. 62Y05				
ILLINOIS FED. AID PROJECT				

MOT LEGEND



WORK AREA



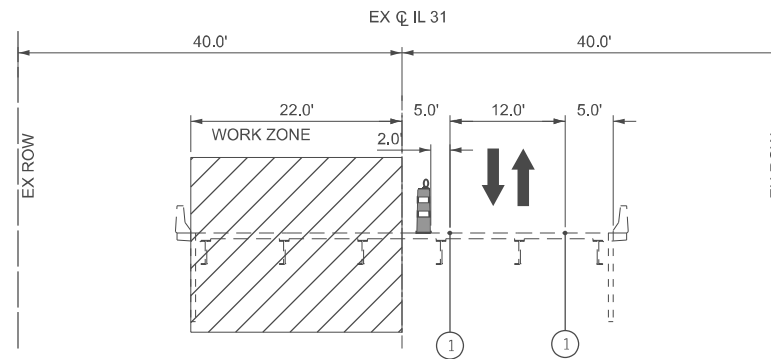
DIRECTION OF TRAFFIC



CONSTRUCTION DRUMS WITH STEADY
BIDIRECTIONAL LIGHT (TO BE PLACED AT 25' C-C
UNLESS OTHERWISE NOTED)

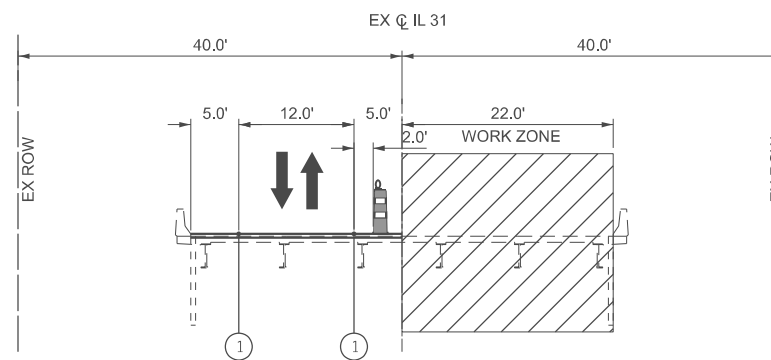


TEMPORARY 4" SOLID WHITE LINE TYPE IV TAPE



IL 31 - STAGE 1 (LOOKING SOUTH)

STA 246+98 TO STA 248+34



IL 31 - STAGE 2 (LOOKING SOUTH)

STA 246+98 TO STA 248+34



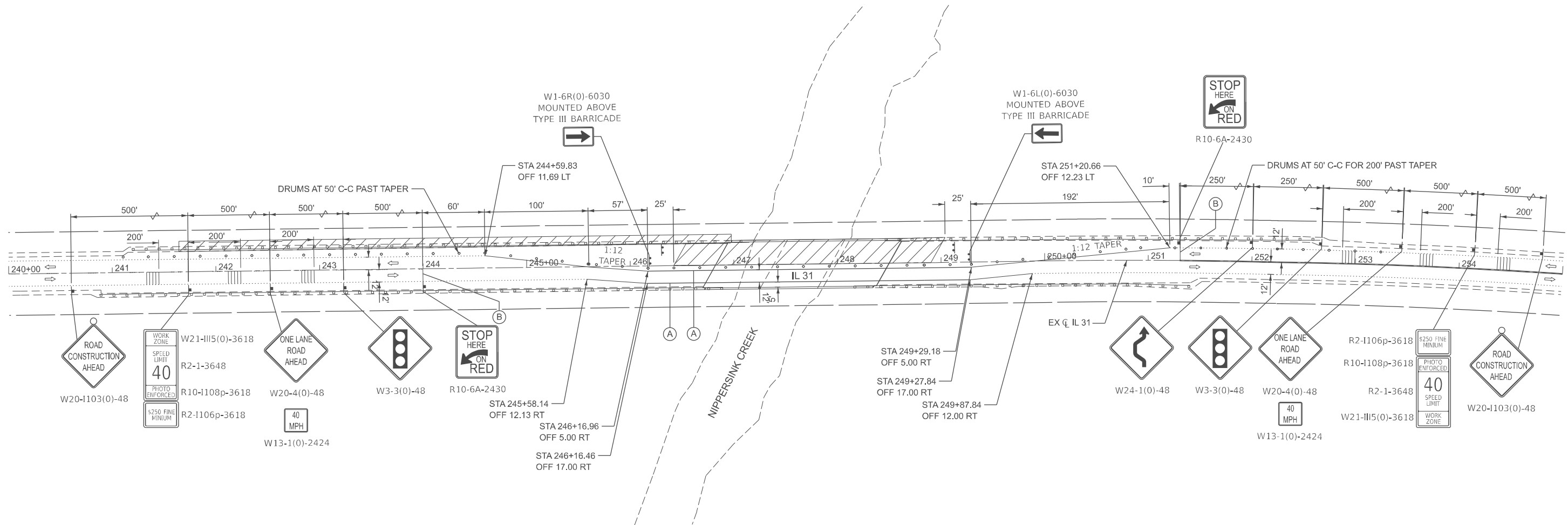
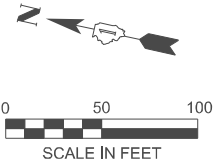
USER NAME = rleywhite	DESIGNED - RBW	REVISED -
	DRAWN - RBW	REVISED -
	CHECKED - YSK	REVISED -
PLT DATE = 08/08/2025	DATE - 08/08/2025	REVISED -

**STATE OF ILLINOIS
DEPARTMENT OF TRANSPORTATION**

MAINTENANCE OF TRAFFIC TYPICAL SECTIONS

SCALE: N.T.S.	SHEET 2	OF 4	SHEETS	STA.	TO STA.
---------------	---------	------	--------	------	---------

F.A.P RTE.	SECTION	COUNTY	TOTAL SHEETS	SHEET NO.
336	(111-BI) BDR,BJR 25	MCHENRY	33	10
CONTRACT NO. 62Y05				
ILLINOIS		FED. AID PROJECT		



MOT LEGEND

- WORK AREA
- SIGN
- TYPE III BARRICADE WITH FLASHING LIGHTS
- TEMPORARY RUMBLE STRIP
- CONSTRUCTION DRUMS WITH STEADY BIDIRECTIONAL LIGHT (25' C-C UNLESS OTHERWISE NOTED)
- DIRECTION OF TRAFFIC
- TEMPORARY PAVEMENT MARKING - LINE 4" - TYPE IV (WHITE, SOLID)
- TEMPORARY PAVEMENT MARKING - STOP BAR 24" - TYPE IV (WHITE)



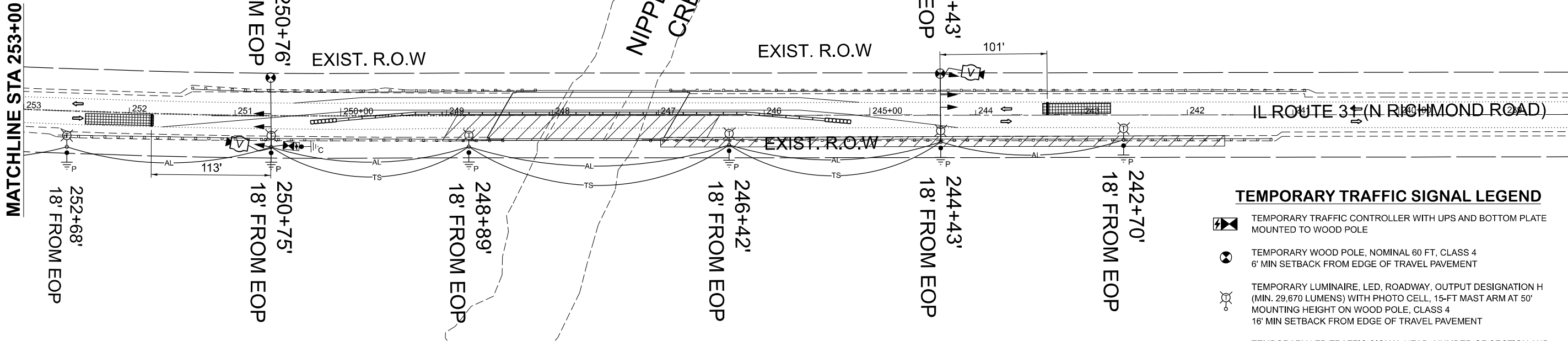
USER NAME = rileywhite	DESIGNED - RBW	REVISED -
	DRAWN - RBW	REVISED -
	CHECKED - YSK	REVISED -
	DATE - 08/08/2025	REVISED -
PLOT DATE = 8/8/2025		

STATE OF ILLINOIS
DEPARTMENT OF TRANSPORTATION

MAINTENANCE OF TRAFFIC PLAN
STAGE 1

SCALE: 1"=50' SHEET 3 OF 4 SHEETS STA. 240+00.00 TO STA. 255+00.00

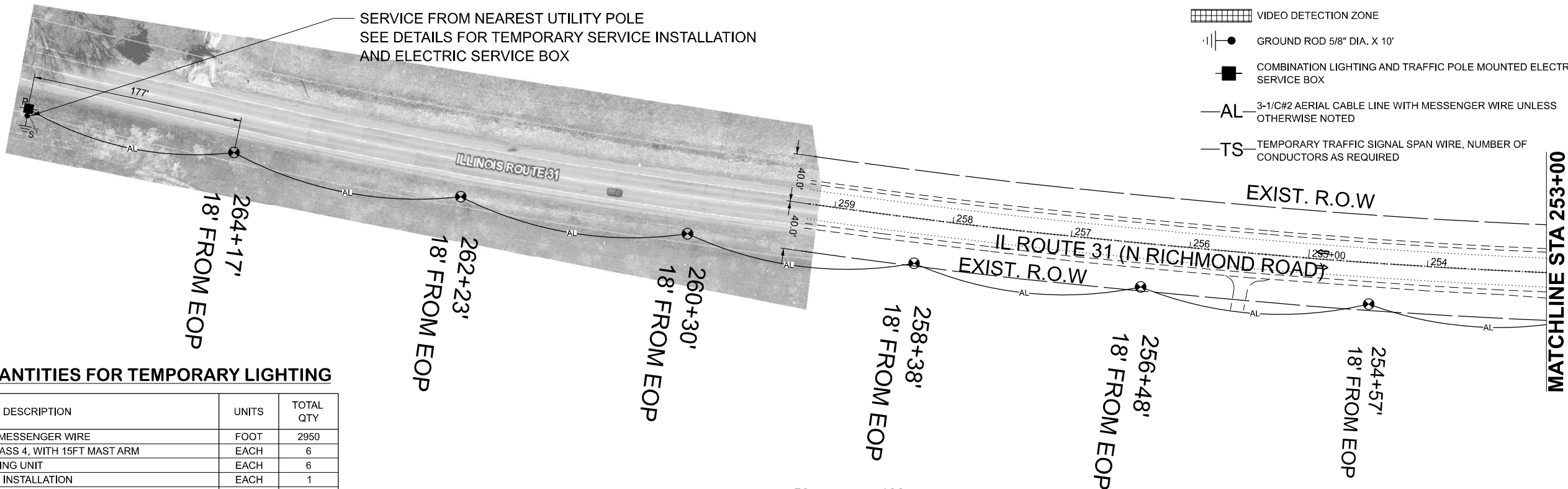
F.A.P. RTE.	SECTION	COUNTY	TOTAL SHEETS	SHEET NO.
336	(111-B1) BDR,BJR 25	MCHENRY	33	11
CONTRACT NO. 62Y05				
ILLINOIS FED. AID PROJECT				



TEMPORARY TRAFFIC SIGNAL LEGEND

- TEMPORARY TRAFFIC CONTROLLER WITH UPS AND BOTTOM PLATE MOUNTED TO WOOD POLE
- TEMPORARY WOOD POLE, NOMINAL 60 FT, CLASS 4
6' MIN SETBACK FROM EDGE OF TRAVEL PAVEMENT
- TEMPORARY LUMINAIRE, LED, ROADWAY, OUTPUT DESIGNATION H (MIN. 29,670 LUMENS) WITH PHOTO CELL, 15-FT MAST ARM AT 50' MOUNTING HEIGHT ON WOOD POLE, CLASS 4
16' MIN SETBACK FROM EDGE OF TRAVEL PAVEMENT
- TEMPORARY LED TRAFFIC SIGNAL HEAD, NUMBER OF SECTION AND DISPLAY AS REQUIRED

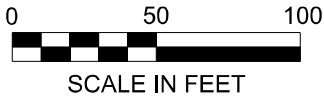
- TEMPORARY VIDEO DETECTION CAMERA
- VIDEO DETECTION ZONE
- GROUND ROD 5/8" DIA. X 10'
- COMBINATION LIGHTING AND TRAFFIC POLE MOUNTED ELECTRICAL SERVICE BOX
- 3-1/C#2 AERIAL CABLE LINE WITH MESSENGER WIRE UNLESS OTHERWISE NOTED
- TEMPORARY TRAFFIC SIGNAL SPAN WIRE, NUMBER OF CONDUCTORS AS REQUIRED



SCHEDULE OF QUANTITIES FOR TEMPORARY LIGHTING

ITEM DESCRIPTION	UNITS	TOTAL QTY
AERIAL CABLE, 3-1/C NO. 2 WITH MESSENGER WIRE	FOOT	2950
LIGHT POLE, WOOD, 60 FOOT, CLASS 4, WITH 15FT MAST ARM	EACH	6
REMOVAL OF TEMPORARY LIGHTING UNIT	EACH	6
REMOVAL OF ELECTRIC SERVICE INSTALLATION	EACH	1
TEMPORARY ELECTRIC SERVICE INSTALLATION	EACH	1
TEMPORARY LUMINAIRE, LED, ROADWAY, OUTPUT DESIGNATION H	EACH	6
COMBINATION POLE MOUNTED ELECTRICAL SERVICE BOX	EACH	1
GROUND ROD, 5/8" DIA. X 10 FEET	EACH	6

NOTE:
THESE QUANTITIES ARE FOR ESTIMATING PURPOSES ONLY.
THESE ITEMS SHALL BE PAID FOR AS PART OF
"TEMPORARY LIGHTING FOR SINGLE LANE STAGING"



10/23/2023 10:00 AM CADD/CADD_Sheets/162/05-Sheet Temporary Signal Plan Stage 1.dgn
10/30/2023 1:10 PM
USER NAME = mcmwarp



USER NAME = mcmwarp
PLOT SCALE = 1"=50'
PLOT DATE = 9/23/2025

DESIGNED - MJC
DRAWN - MJC
CHECKED - GJG
DATE - 9/5/2025

REVISED -
REVISED -
REVISED -
REVISED -

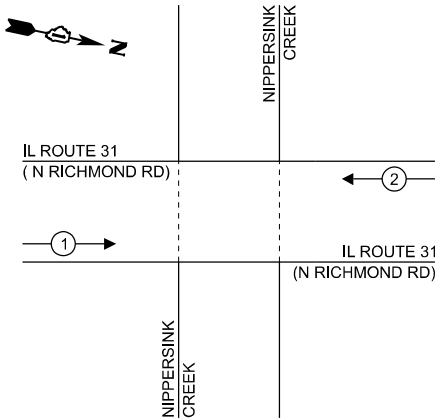
STATE OF ILLINOIS
DEPARTMENT OF TRANSPORTATION

TEMPORARY LIGHTING AND TRAFFIC SIGNALS

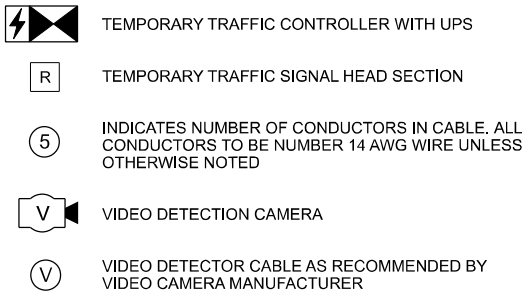
SCALE: 1"=50' SHEET NO. 1 OF 2 SHEETS STA. 238+00 TO STA. 258+75

F.A.P. RTE.	SECTION	COUNTY	TOTAL SHEETS	SHEET NO.
336	(111-BI) BDR.BJR 25	MCHENRY	33	13
CONTRACT NO. 62Y05				
FED. ROAD DIST. NO. 1 ILLINOIS FED. AID PROJECT				

TEMPORARY CONTROLLER SEQUENCE



TEMPORARY CABLE DIAGRAM LEGEND



TRAFFIC SIGNAL ELECTRICAL SERVICE REQUIREMENTS

EQUIPMENT TYPE	QUANTITY	UNIT WATTAGE	TOTAL WATTAGE
SIGNAL HEAD 1 OR 3-SECTION	6	11	66
4-SECTION	-	14	-
5-SECTION	-	13	-
PROGRAMMABLE 3-SECTION	-	22	-
4-SECTION	-	32	-
5-SECTION	-	28	-
PEDESTRIAN SIGNAL	-	15	-
CONTROLLER	1	150	150
MASTER CONTROLLER	-	100	-
UPS	1	25	25
VIDEO DETECTION	2	20	40
BLANK-OUT SIGN	-	25	-
NETWORK SWITCH II OR III	1	35	35
CELLULAR MODEM	1	15	15
TOTAL UPS SIZING		331	
UPS CHARGING	1	225	225
BATTERY HEATER MAT	1	180	180
CABINET HEATER	1	200	200
FLASHER	-	15	-
LED STREET NAME SIGN	-	120	-
LUMINAIRE	6	240	1,440
TOTAL SERVICE WIRE SIZING		2,376	

ENERGY COSTS TO:			
COUNTY OF MCHENRY			
2200 N SEMINARY AVE			
WOODSTOCK, IL 60098			
ENERGY SUPPLY:	CONTACT:	---	
	PHONE:	---	
	COMPANY:	COMED	
	ACCOUNT NUMBER:	---	
	METER NUMBER:	---	

CABLE PLAN
(NOT TO SCALE)

GENERAL NOTES:

- CONTACT TO THE ELECTRIC UTILITY SHALL BE INITIATED BEFORE THE PRECONSTRUCTION MEETING, AND DOCUMENTATION OF CONTACT SHALL BE PRESENTED AT THAT MEETING. NO PLACEMENT OF POLES WILL BE ALLOWED WITHOUT EVIDENCE OF A SIGNED AGREEMENT WITH THE ELECTRIC UTILITY, FURNISHED TO THE ENGINEER.
- THE ELECTRIC SERVICE SHALL BE 240/120V, WHERE 240V SERVICE IS NOT AVAILABLE, THE CONTRACTOR MAY SUBMIT A PROPOSAL FOR 120V SERVICE. DROP CABLE, MAIN BREAKER, AND ALL OTHER SERVICE APPURTENANCES SHALL BE APPROPRIATELY RATED AND INCLUDED REGARDLESS OF THE SERVICE VOLTAGE APPLIED.
- THE TEMPORARY LIGHTING AND TRAFFIC SIGNAL INSTALLATION SHALL SHARE ANY COMMON ELEMENTS SUCH AS WOOD POLES, ELECTRICAL SERVICE, ELECTRIC SERVICE BOX, CABLE, ETC. THE CONTRACTOR SHALL COORDINATE TEMPORARY LIGHTING AND TRAFFIC SIGNAL INSTALLATIONS
- THE LIGHT POLE SETBACK FROM THE EDGE OF TRAVEL PAVEMENT SHALL BE 18 FT. UNLESS THE LIGHT POLE IS BEHIND GUARDRAIL. THE LIGHT POLES INSTALLED BEHIND THE GUARDRAIL OR BARRIER WALL SHOULD HAVE AT LEAST 8 FT. SETBACK FROM THE BACK OF THE SHOULDER AND OR AS DIRECTED BY THE ENGINEER.
- EACH LIGHTING UNIT SHALL BE CONTROLLED BY A PHOTO CELL MOUNTED ON EACH LUMINAIRE WITH THE LIGHTING CIRCUIT FED FROM THE TEMPORARY SERVICE DISCONNECT BOX. OTHER MEANS OF LUMINAIRE CONTROL CAN BE CONSIDERED IF APPROVED BY THE ENGINEER.
- THE CONTRACTOR SHALL SPLICE AERIAL CABLE AT THE LIGHT POLE USING HEAT SHRINKABLE CAPS WITH THE FACTORY APPLIED WATERPROOF SEALANT OR AN APPROVED UL LISTED AERIAL TAP DEVICE.
- ALL AREAS DISTURBED UNDER THIS CONTRACT SHALL BE RESTORED TO THE ORIGINAL CONDITION OR BETTER, TO THE SATISFACTION OF THE ENGINEER.

SCHEDULE OF QUANTITIES

ITEM	UNIT	TOTAL QUANTITY
TEMPORARY BRIDGE TRAFFIC SIGNALS	EACH	1
TEMPORARY LIGHTING FOR SINGLE LANE STAGING	L SUM	1
TEMPORARY TRAFFIC SIGNAL TIMING	EACH	1

FILE NAME = J:\22263\0704_CADD\CADD_Sheets\62Y05-Sheet Temporary Signal Cable Plan.dgn
PLOT SCALE = 40,000 / 1 in.
USER NAME = mcowap

SINGH
SINGH & ASSOCIATES, INC.
CONSULTING ENGINEERS

USER NAME	= mcowap
PLOT SCALE	= 40,000 / 1 in.
PLOT DATE	= 9/23/2025

DESIGNED	- MJC
DRAWN	- MJC
CHECKED	- GJG
DATE	- 9/5/2025

REVISED	-
REVISED	-
REVISED	-
REVISED	-

STATE OF ILLINOIS
DEPARTMENT OF TRANSPORTATION

TEMPORARY CABLE PLAN, TEMPORARY PHASE
DESIGNATION DIAGRAM, AND SCHEDULE OF QUANTITIES

SCALE:	SHEET NO. 2 OF 2 SHEETS	STA.	TO STA.
--------	-------------------------	------	---------

F.A.P. RTE.	SECTION	COUNTY	TOTAL SHEETS	SHEET NO.
336	(111-BI) BDR.BJR 25	MCHENRY	33	14
CONTRACT NO. 62Y05				
FED, ROAD DIST, NO. 1	ILLINOIS	FED, AID PROJECT		

Benchmark: Railroad spike driven vertical in root on West side of 30" Oak. 41'-0" left offset, Sta 245+88, Elev. 769.76.

Existing Structure: SN 056-0037 over Nippersink Creek in the Village of Richmond was originally built in 1927, rebuilt in 1966, and widened with a superstructure replacement in 1988 under S.B.I. Route 61 (IL-31) Sec. 111B-L. The existing structure consists of a 3 span structure with reinforced concrete deck and continuous steel beams supported on closed abutments with timber piles supporting the abutment and steel piles supporting the wingwalls. The end to end of deck is 166'-9" and the out-to-out width is 47'-2". Traffic to be maintained utilizing staged construction.

Salvage: No Salvage.

DESIGN SPECIFICATIONS

1983 AASHTO Standard Specifications
for Road and Bridge Construction

DESIGN LOADING

HS-20-44 and Allowance for
25 P.S.F. Wearing Surface

DESIGN STRESSES

NEW CONSTRUCTION

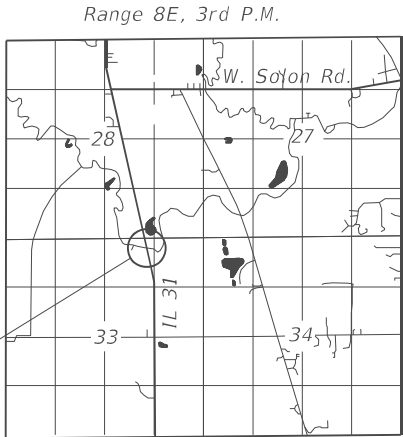
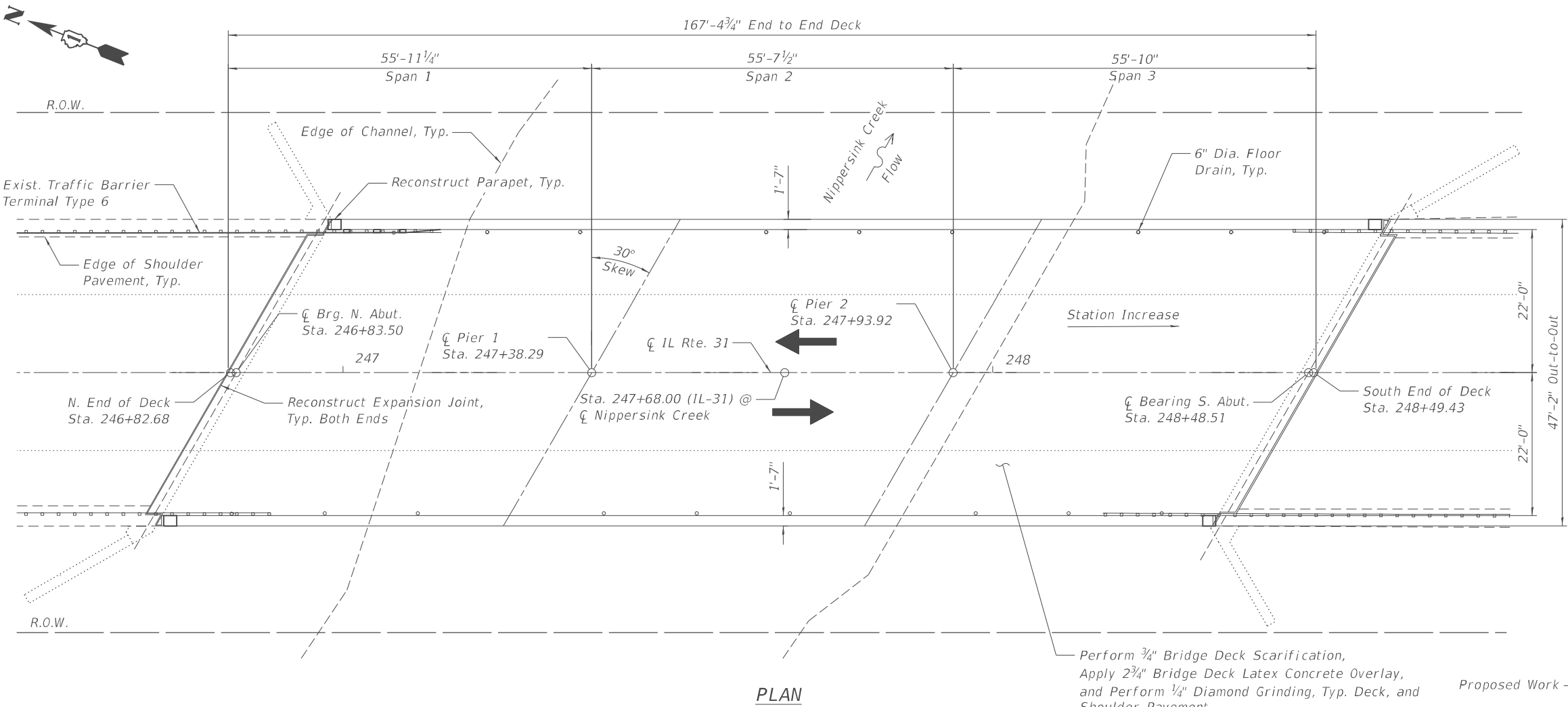
f'c = 4,000 psi (Concrete Superstructure)
fy = 60,000 psi (Reinforcement)

EXISTING CONSTRUCTION

f'c = 3,500 psi
f'y = 50,000 psi (M223 Grade 50)
f'y = 36,000 psi (M183)
fy = 60,000 psi (Reinforcement)

SCOPE OF WORK

1. Scarify and Overlay bridge deck.
2. Reconstruct the expansion joints at each abutment.
3. Repair Parapets and Guardrails.
4. Remove tree debris in channel.



LOCATION SKETCH

ARDMORE RODERICK
SHAWN T. BRODASKI, S.E.
81-7569

Shawn T. Brodaski

DATE: 11/30/2026
SIGNATURE AND SEAL
APPLIES TO DRAWINGS:
15-24



GENERAL PLAN & ELEVATION
F.A.P. RTE. 336 (IL-31) OVER
NIPPERSINK CREEK
SECTION 111-BI
MCHENRY COUNTY
STATION 247+68
STRUCTURE NO. 056-0037

MODEL: GPE [Sheet]
FILE NAME: T:\TRG\Business\Clients\DOT\Projects\22-145 PTB 205-003 V-A\Work Order 071400 CADD\402 CADD Sheets\Structures\162Y05-Sht-GPE.dgn



USER NAME = rileywhite	DESIGNED - MS	REVISED -
	DRAWN - NMB	REVISED -
	CHECKED - STB	REVISED -
PLOT DATE = 9/23/2025	DATE - 08/08/2025	REVISED -

STATE OF ILLINOIS
DEPARTMENT OF TRANSPORTATION

GENERAL PLAN AND ELEVATION
STRUCTURE NO. 056-0037

SCALE: 1"=10' SHEET S-01 OF S-11 SHEETS STA. TO STA.

F.A.P. RTE.	SECTION	COUNTY	TOTAL SHEETS	SHEET NO.
336	(111-BI) BDR,BJR 25	MCHENRY	33	15
CONTRACT NO. 62Y05				
ILLINOIS FED. AID PROJECT				

1. Reinforcement bars designated "(E)" shall be epoxy coated.
2. Plan dimensions and details relative to existing structure have been taken from existing plans and are subject to normal construction variations. The contractor shall field verify existing dimensions and details affecting new construction and make necessary approved adjustments prior to construction or ordering materials. Such variations shall not be cause for additional compensation for a change in scope of work however, the Contractor will be paid for the quantity actually furnished at the unit price bid for the work.
3. Concrete sealer shall be applied to each abutment backwall. All surfaces to be sealed shall be cleaned thoroughly prior to sealer application. Cost included with concrete sealer.
4. Stage construction shall be utilized to maintain traffic during construction.
5. The contractor shall exercise care during removal of existing joints to ensure that the slab, beams and diaphragm's integrity will not be detrimentally impacted. The Contractor shall repair any damage(s) to the slab, beams and diaphragms caused by his operation as directed by the Engineer at no additional cost to the Department.
6. Prior to pouring the new concrete deck for expansion joint replacement and deck slab repairs, all heavy or loose rust, loose mill scale, and other loose detrimental foreign material shall be removed from the surfaces in contact with concrete (SSPC - SP3 standards). Tightly adhered paint may remain unless otherwise noted. Removal shall be accomplished by methods that will not damage the steel and the cost will be paid for according to Article 109.04 of the Standard Specifications.
7. Protective Coat shall be applied to the top and inside faces of new and existing parapets, new concrete deck adjacent to repaired deck joints, and new concrete overlays
8. Joint openings shall be adjusted according to Article 520.04 of the Std. Specs. when the deck is poured at an ambient temperature other than 50°F.
9. Any reinforcement bars that are damaged during concrete removal operations shall be repaired or replaced using an approved bar splicer or anchorage system. Cost incidental to "Concrete Removal".
10. Bars indicated thus, 3x2-#5, indicates 3 lines of #5 bars with 2 lengths of bar per line.
11. Up to ¼" to be ground off the bridge deck.
12. Hand finish of overlay material is required around the floor drains. The cost is included with Bridge Deck Latex Concrete Overlay, 2¾".
13. All exposed concrete edges shall have a ¾"x45° chamfer, except where shown otherwise.
14. See HMA Butt Joint Detail in Roadway plans for transition at ends of bridge deck.



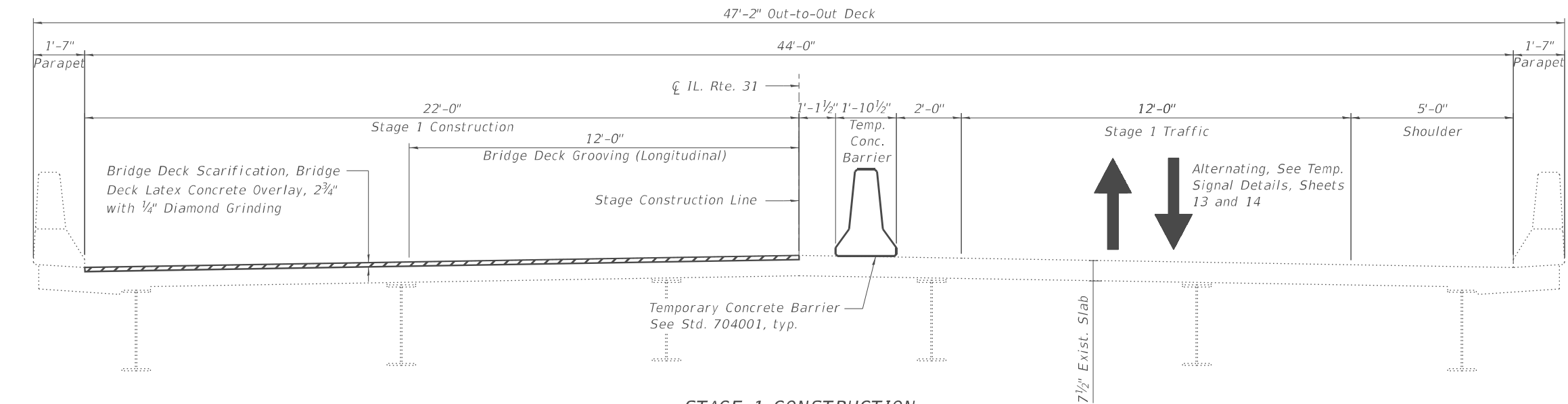
INDEX OF SHEETS

S-01	General Plan and Elevation
S-02	General Notes and Bill of Material
S-03	Stage Construction Details
S-04	Deck Overlay Details
S-05	Abutment Repair Details
S-06	Expansion Joint Removal
S-07	Expansion Joint Reconstruction Details I
S-08	Expansion Joint Reconstruction Details II
S-09	Preformed Joint Strip Seal
S-10	Bar Splicer Details
S-11	Temporary Concrete Barrier

LIST OF ABBREVIATIONS

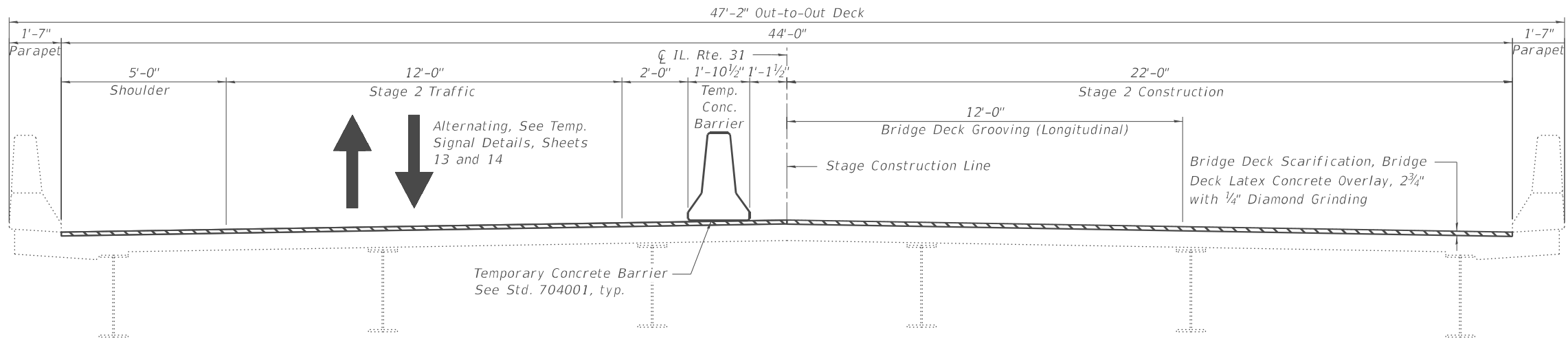
\overline{B}	Baseline	B.F.	Back Face
\overline{C}	Centerline	cl.	Clearance
const.	Construction	\bigcirc	Diameter
conc.	Concrete	elev.	Elevation
cts.	Centers	long.	Longitudinal
E.F.	Each Face	min.	Minimum
exist.	Existing	O.F.	Outside Face
F.F.	Front Face	prop.	Proposed
jt.	Joint	R.O.W.	Right of Way
LT	Left	RT	Right
max.	Maximum	rte.	Route
no.	Number	RET.	Retaining Wall
PG	Profile Grade	spa.	Spaces
P.G.L.	Profile Grade Line	sta.	Station
Req'd.	Required	struct.	Structure
sect.	Section	\overline{P}	Plate
spec.	Specification	o.c.	On Center
std.	Standard	U.N.O.	Unless Noted Otherwise
typ.	Typical		

MODEL: Stage Construction Details 1 [Sheet]
FILE NAME: T:\TRG\Business\Clients\IDOT\Projects\22-145 PTB 205-003 V\Work Order 071400 CADD\205-003-Sht-Stage Construction Details 1.dgn



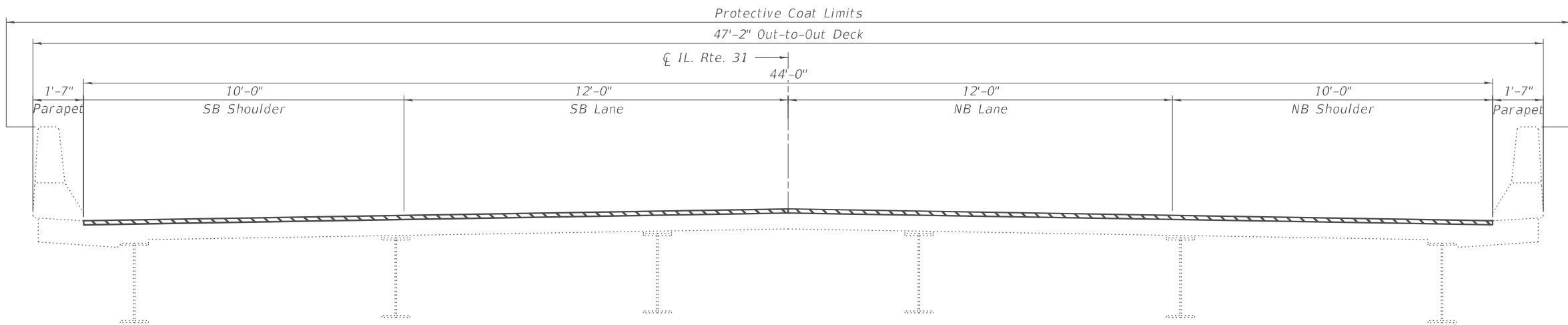
STAGE 1 CONSTRUCTION

(Looking North)



STAGE 2 CONSTRUCTION

(Looking North)



FINAL CROSS SECTION

(Looking North)

STAGE 1 REMOVAL

1. Position construction drums as shown to shift traffic to the east side of the existing structure.
2. Perform $\frac{3}{4}$ " bridge deck scarification.
3. Remove portions of Bridge concrete deck/approach slab adjacent to expansion joints, as shown in the plans.

STAGE 1 CONSTRUCTION

1. Reconstruct deck and parapet at transverse expansion joints and install new Preformed Joint Strip Seals, within the limits of Stage 1 Construction.
2. Apply $2\frac{3}{4}$ " bridge deck latex concrete overlay.
3. Preform $\frac{1}{4}$ " Diamond Grinding to bridge deck.
4. Perform bridge deck grooving (longitudinal) for the $2\frac{3}{4}$ " bridge deck latex concrete overlay and abutment expansion joint areas.
5. Apply protective coat to top and inside faces of West Parapet, joints and surfaces of the new overlay.

STAGE 2 REMOVAL

1. Repeat Stage 1 Steps on East Side.

STAGE 2 CONSTRUCTION

1. Repeat Stage 1 Steps on East Side.

LEGEND



Bridge Deck Scarification and Latex Concrete Overlay



USER NAME = nickbrustin	DESIGNED - MS	REVISED -
	DRAWN - NMB	REVISED -
	CHECKED - STB	REVISED -
PLOT DATE = 09/23/2025	DATE - 08/08/2025	REVISED -

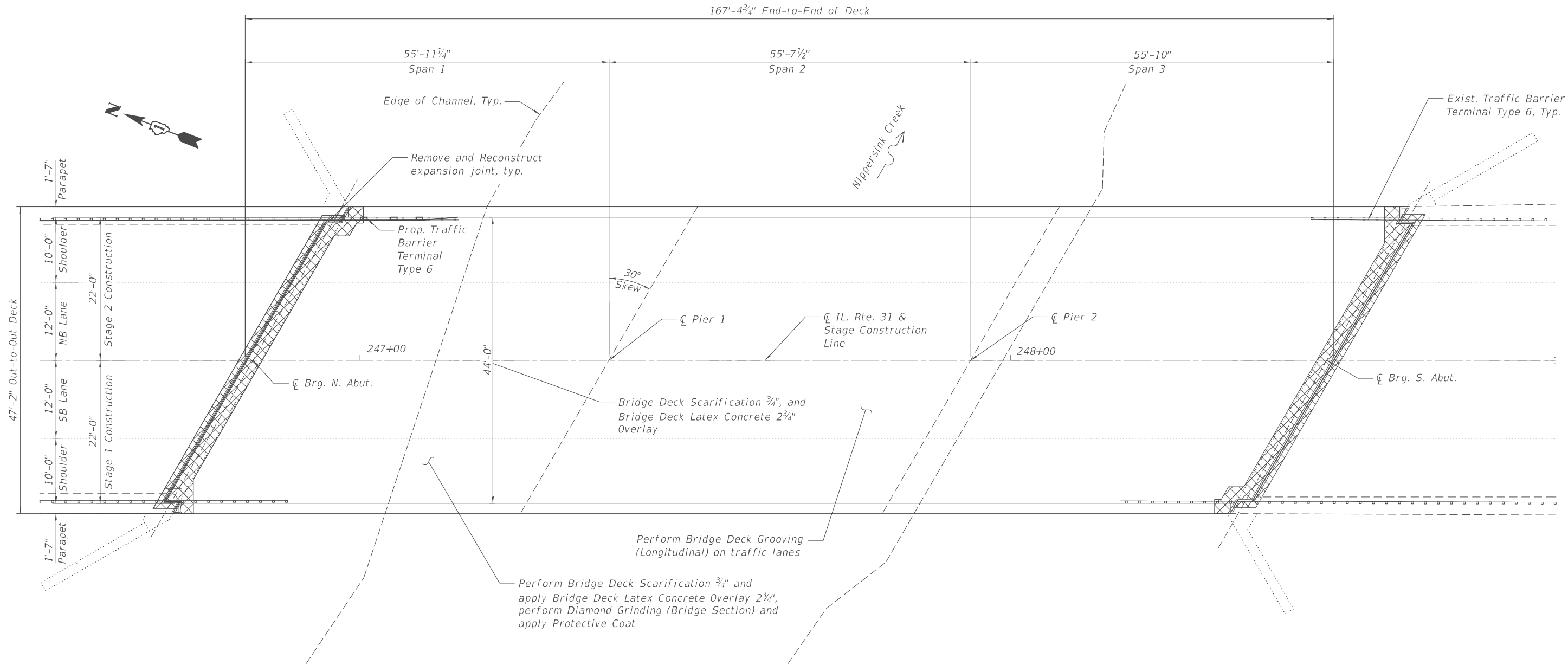
STATE OF ILLINOIS
DEPARTMENT OF TRANSPORTATION

STAGE CONSTRUCTION DETAILS
STRUCTURE NO. 056-0037

SCALE: 1/2"=1'-0" SHEET S-03 OF S-11 SHEETS STA. TO STA.

F.A.P. RTE.	SECTION	COUNTY	TOTAL SHEETS	SHEET NO.
336	(111-BI) BDR,BJR 25	MCHENRY	33	17
CONTRACT NO. 62Y05				
ILLINOIS FED. AID PROJECT				

MODEL: Deck Overlay and Slab Repair Plan Details 1 (Sheet)
FILE NAME: T:\TRG\Business\Clients\DOT\Projects\22-145\PTB 205-003 V\Work Order 071400 CADD\202 CADD_Sheets\Structures\162Y05-Slt+Deck Overlay and Slab Repair Plan Details 1.dgn



PLAN

NOTES:

1. For North and South expansion joint removal and reconstruction, see Sheets S-06 through S-09.
2. For Parapet details at joint reconstruction, see Sheet S-08.
3. Perform $\frac{1}{4}$ " Diamond Grinding to top of entire overlayed surface.
4. Perform Bridge Deck Grooving (Longitudinal) on traffic lanes.
5. Protective Coat shall be applied to the top of the reconstructed transverse joints, top and inside face of parapets and top of latex concrete overlay.
6. Any reinforcement bars that are damaged during concrete removal operations shall be repaired or replaced using an approved bar splicer or anchorage system. The cost of repair or replacement shall be included in the cost of Concrete Removal.
7. The Contractor shall exercise extreme caution during concrete removal to avoid damaging the steel beams and diaphragms to remain. Any damage to the existing steel beams and/or diaphragms to remain caused by the Contractor in the performance of his/her work shall be repaired by the Contractor, to the satisfaction of the Engineer at no cost to the Department.

LEGEND



Concrete Removal

BILL OF MATERIAL

ITEM	UNIT	TOTAL
Protective Coat	Sq. Yd.	946
Bridge Deck Grooving (Longitudinal)	Sq. Yd.	445
Bridge Deck Latex Concrete Overlay, 2 3/4 Inches	Sq. Yd.	816
Bridge Deck Scarification 3/4 Inches	Sq. Yd.	816
Diamond Grinding (Bridge Section)	Sq. Yd.	742



USER NAME = rileywhite

DESIGNED - MS

REVISED -

DRAWN - NMB

REVISED -

CHECKED - STB

REVISED -

PLOT DATE = 09/23/2025

DATE - 08/08/2025

REVISED -

STATE OF ILLINOIS
DEPARTMENT OF TRANSPORTATION

DECK OVERLAY DETAILS
STRUCTURE NO. 056-0037

SCALE: 1/8"=1'-0"

SHEET S-04

OF

S-11

SHEETS

STA.

TO STA.

F.A.P.

RTE.

SECTION

(111-BI) BDR,BJR 25

COUNTY

MCHENRY

TOTAL

SHEETS

33

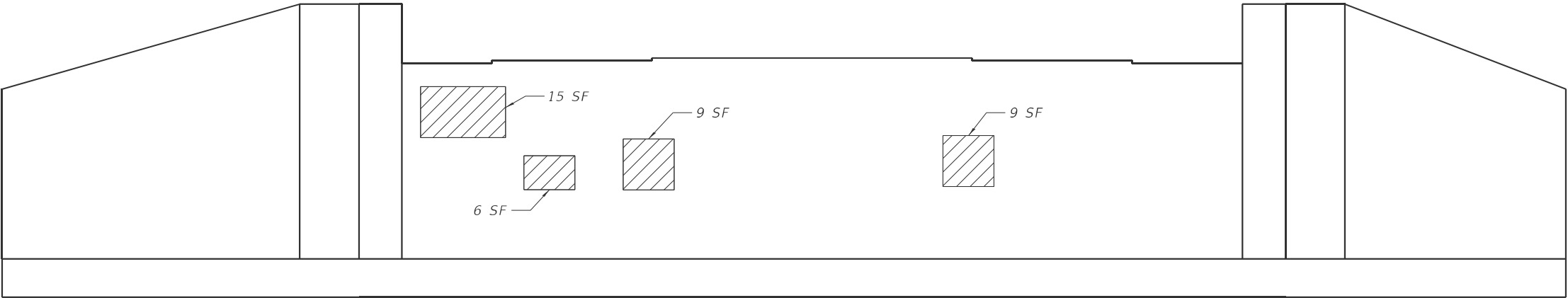
SHEET

NO.

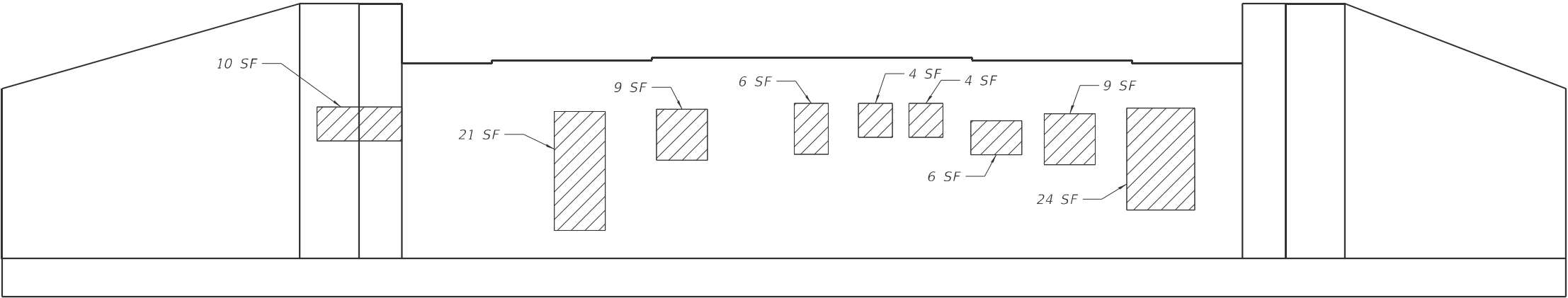
18

CONTRACT NO. 62Y05

ILLINOIS FED. AID PROJECT



SOUTH ABUTMENT ELEVATION
(Looking South)



NORTH ABUTMENT ELEVATION
(Looking North)

LEGEND

 Concrete Repair

BILL OF MATERIAL

ITEM	UNIT	TOTAL
Structural Repair Of Concrete (Depth Equal To Or Less Than 5 Inches)	Sq. Ft.	132

MODEL: Abutment Repair Details (Sheet)
FILE NAME: T:\TRG\Business\Clients\DOT\Projects\22-145 PTB 205-003 V\Work Order 071400 CADD\202 CADD_Sheets\Structures\162Y05-Shr-Abutment Repair Details.dgn



USER NAME	= rileywhite	DESIGNED -	MS	REVISED -	
		DRAWN -	MS	REVISED -	
		CHECKED -	STB	REVISED -	
PLOT DATE	= 09/23/2025	DATE	= 08/08/2025	REVISED -	

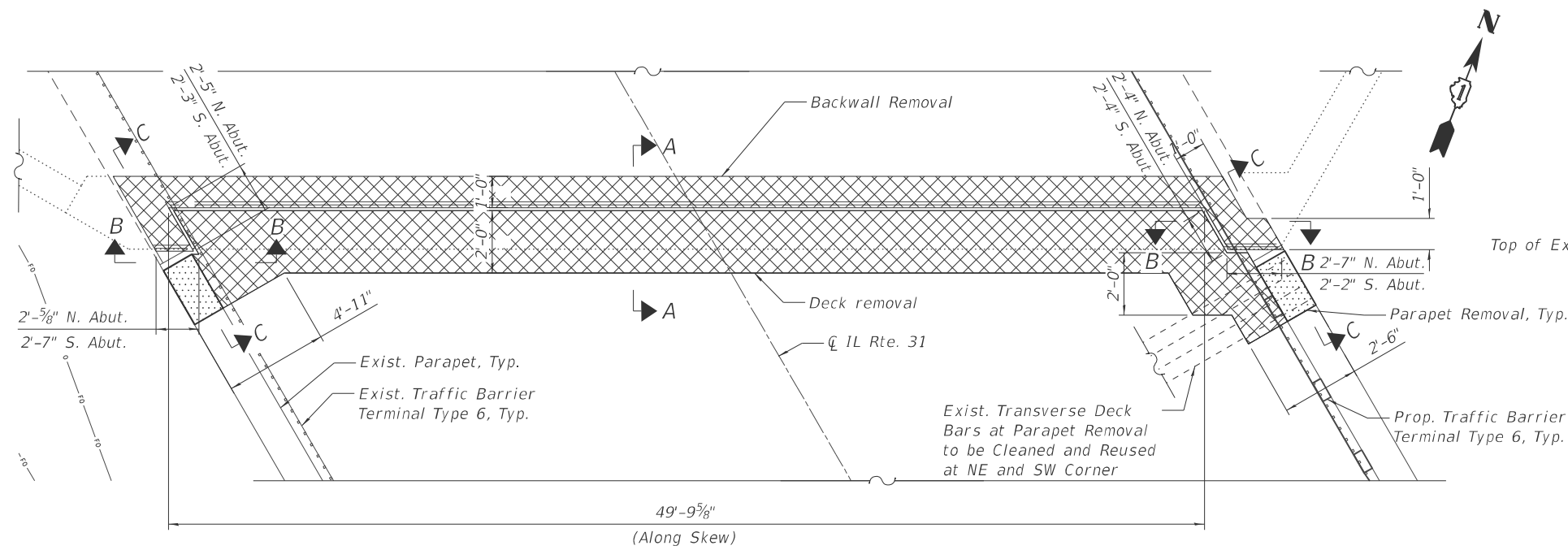
STATE OF ILLINOIS
DEPARTMENT OF TRANSPORTATION

ABUTMENT REPAIR DETAILS
STRUCTURE NO. 056-0037

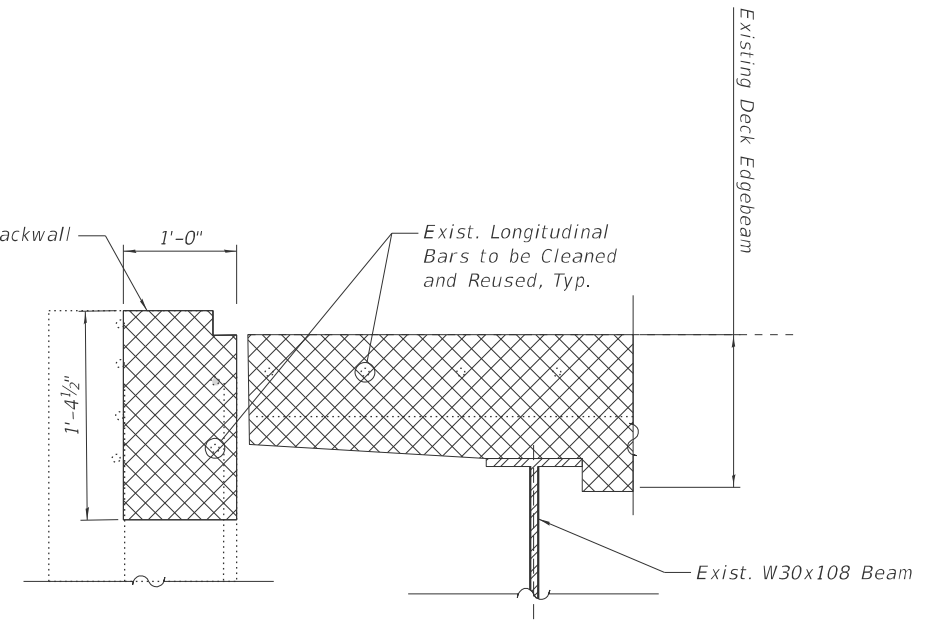
SCALE: 1/8"=1'-0" SHEET S-05 OF S-11 SHEETS STA. TO STA.

F.A.P. RTE.	SECTION	COUNTY	TOTAL SHEETS	SHEET NO.
336	(111-BI) BDR,BJR 25	MCHENRY	33	19
CONTRACT NO. 62Y05				
ILLINOIS FED. AID PROJECT				

MODEL: Expansion Joint Repairs, Removal 1 (Sheet)
FILE NAME: T:\TRG\Business\Clients\IDOT\Projects\22-145 PTB 205-003 V\Work Order 071400 CADD Sheets\Structures\162Y05-Sht-Expansion Joint Repairs, Removal 1.dgn

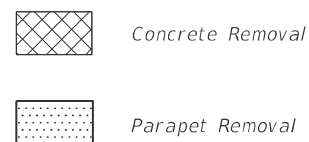


PLAN AT NORTH ABUTMENT
(South Abut. Similar)



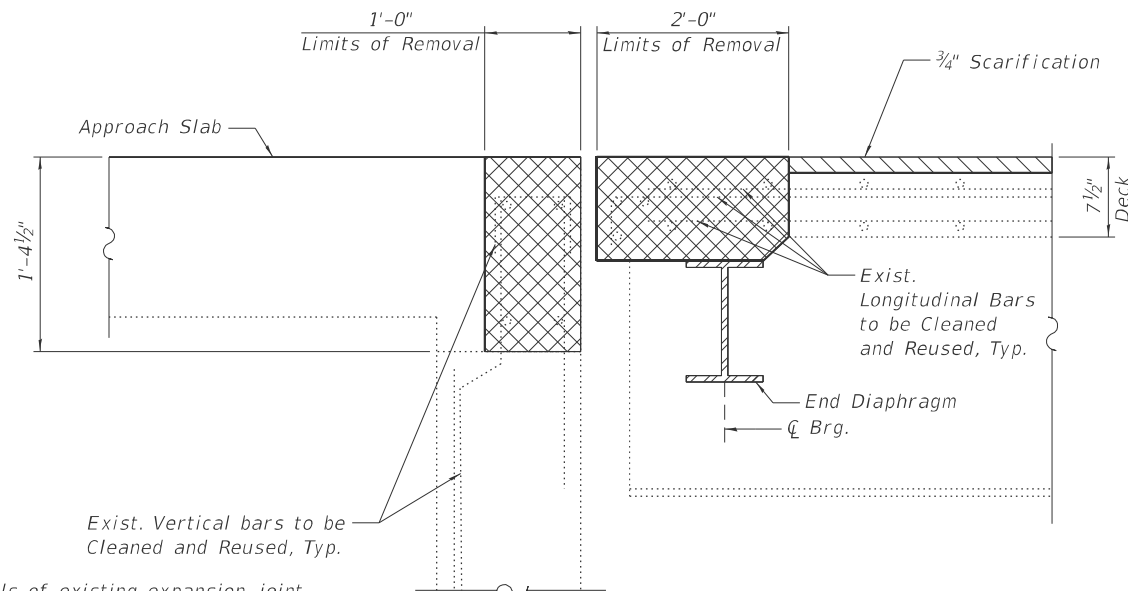
SECTION B-B

LEGEND

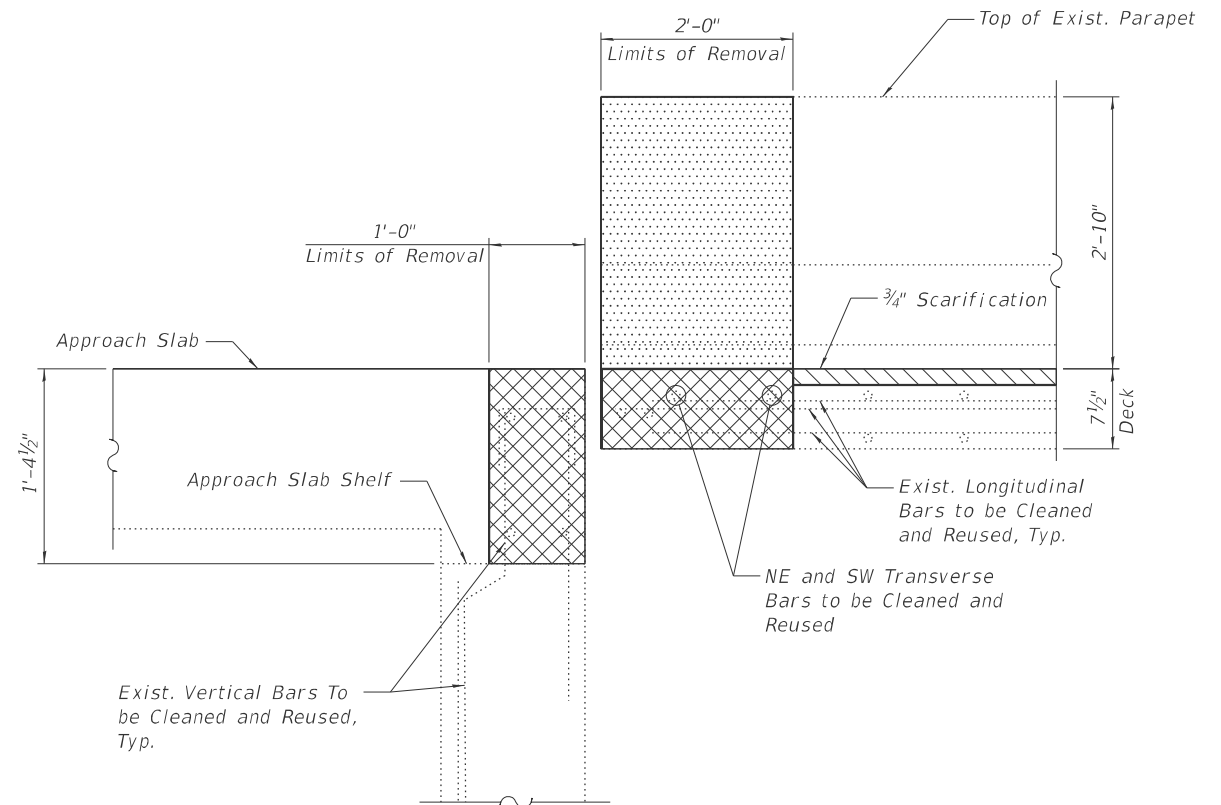


NOTES:

- See 2006 Bridge Joint Repair plans for details of existing expansion joint.
- Completely remove all components of existing neoprene expansion joint. Remove concrete around existing joint to the limits shown to prepare for new joint replacement.
- Existing longitudinal reinforcement in deck and vertical reinforcement in backwall shall be cleaned and reused. Care shall be taken not to damage existing steel reinforcement during concrete removal. Any reinforcing steel exposed during concrete removal shall be cleaned and touched up with a zinc rich primer prior to placement of new concrete.
- Existing concrete reinforcement that is not to be reused is shown for information only.



SECTION A-A



SECTION C-C



USER NAME = rileywhite	DESIGNED - MS	REVISED -
	DRAWN - NMB	REVISED -
	CHECKED - STB	REVISED -
PLOT DATE = 09/23/2025	DATE - 08/08/2025	REVISED -

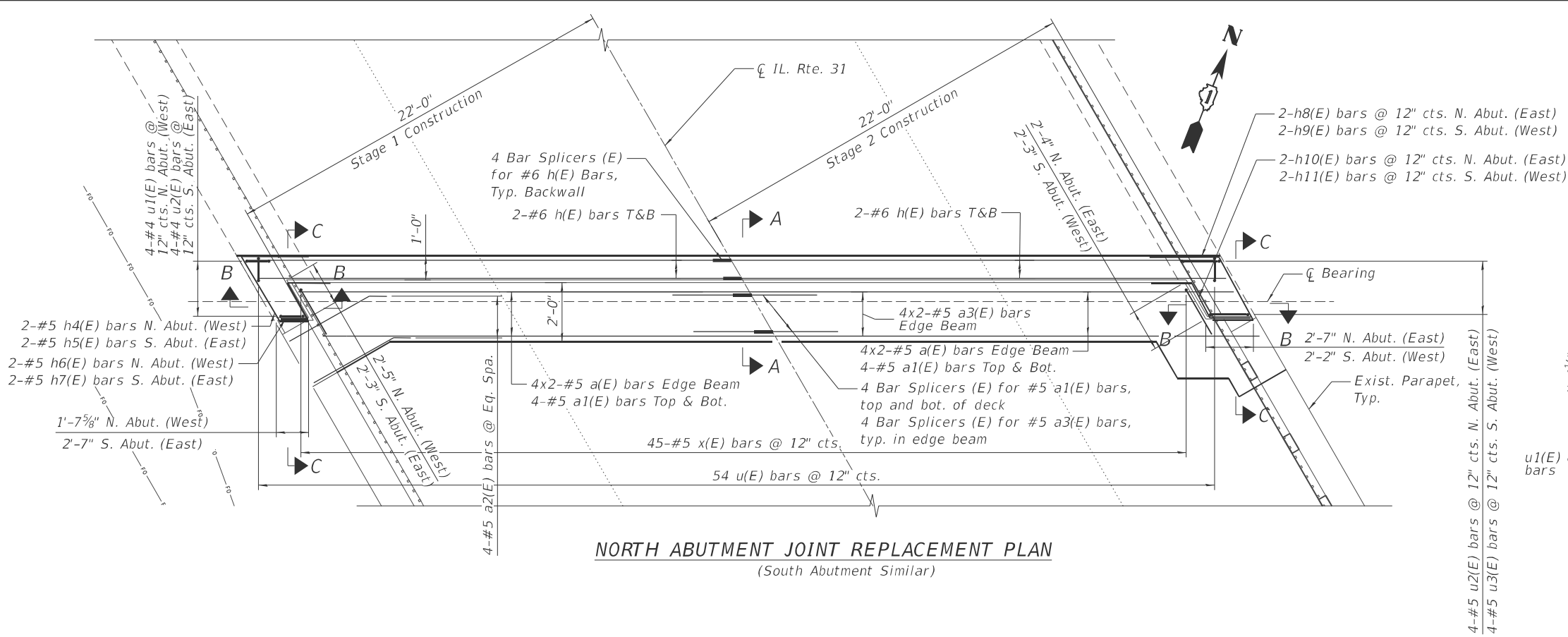
STATE OF ILLINOIS
DEPARTMENT OF TRANSPORTATION

EXPANSION JOINT REMOVAL
STRUCTURE NO. 056-0037

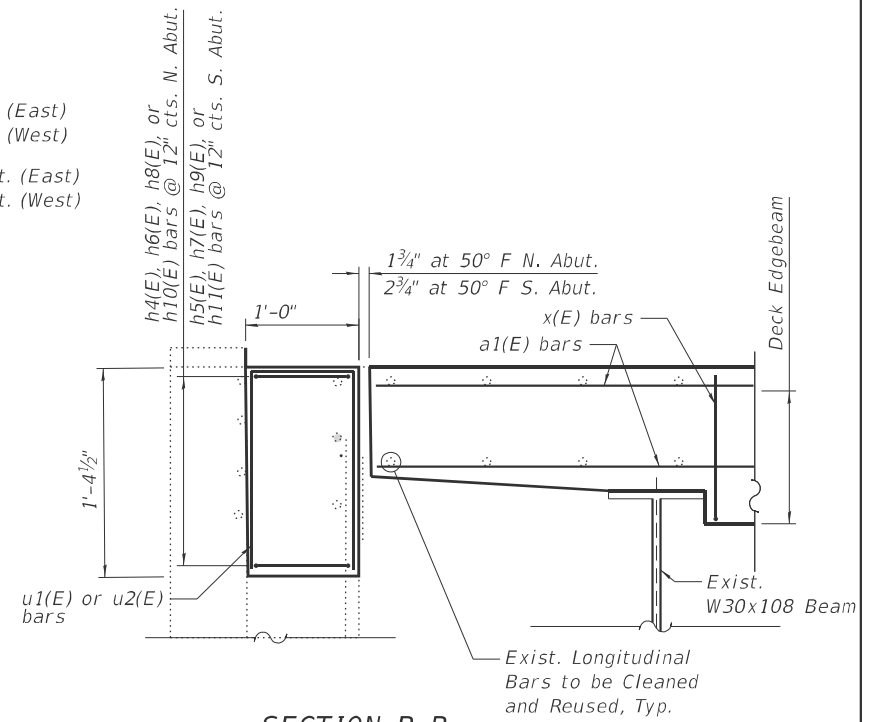
SCALE: N.T.S. SHEET S-06 OF S-11 SHEETS STA. TO STA.

F.A.P. RTE.	SECTION	COUNTY	TOTAL SHEETS	SHEET NO.
336	(111-BJ) BDR,BJR 25	MCHENRY	33	20
CONTRACT NO. 62Y05				
ILLINOIS FED. AID PROJECT				

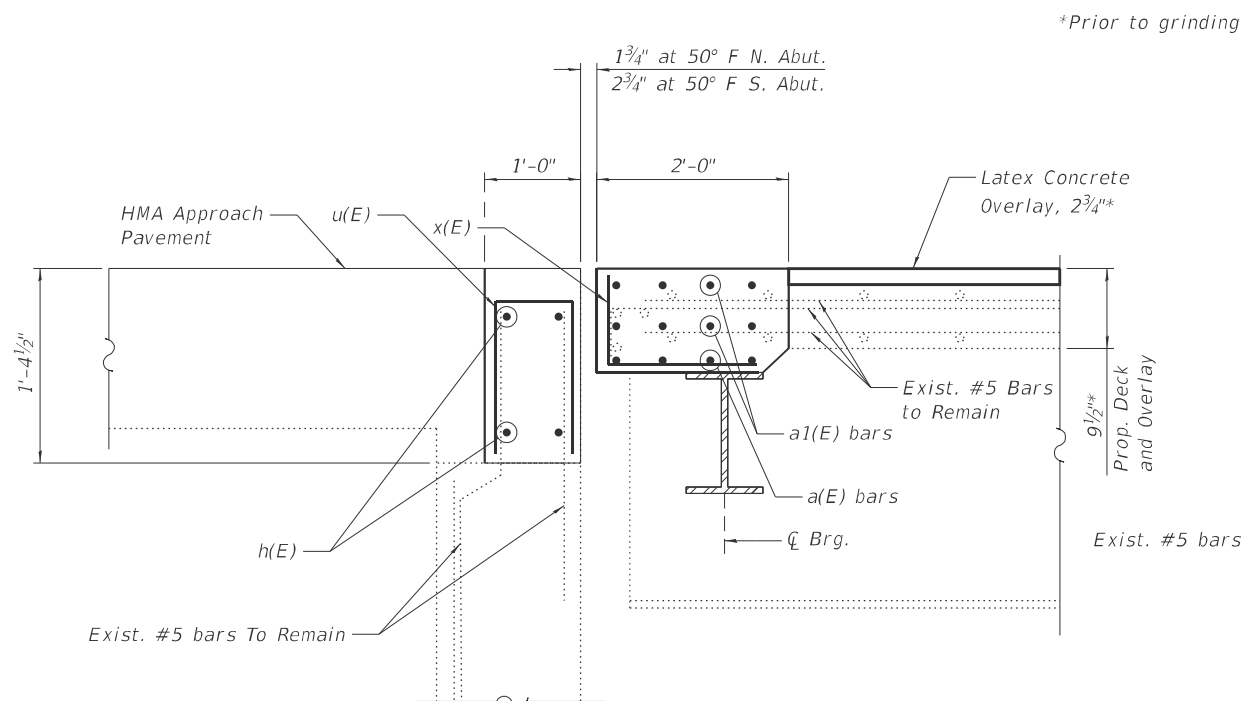
MODEL: Expansion Joint Repairs, Removal 2 (Sheet)
FILE NAME: T:\TRG\Business\Clients\DOT\Projects\22-145 PTB 205-003 V\Work Order 071400 CADD\205-003 CADD\402 CADD_Sheets\Structures\162Y05-Shr-Expansion Joint Repairs_Removal 2.dgn



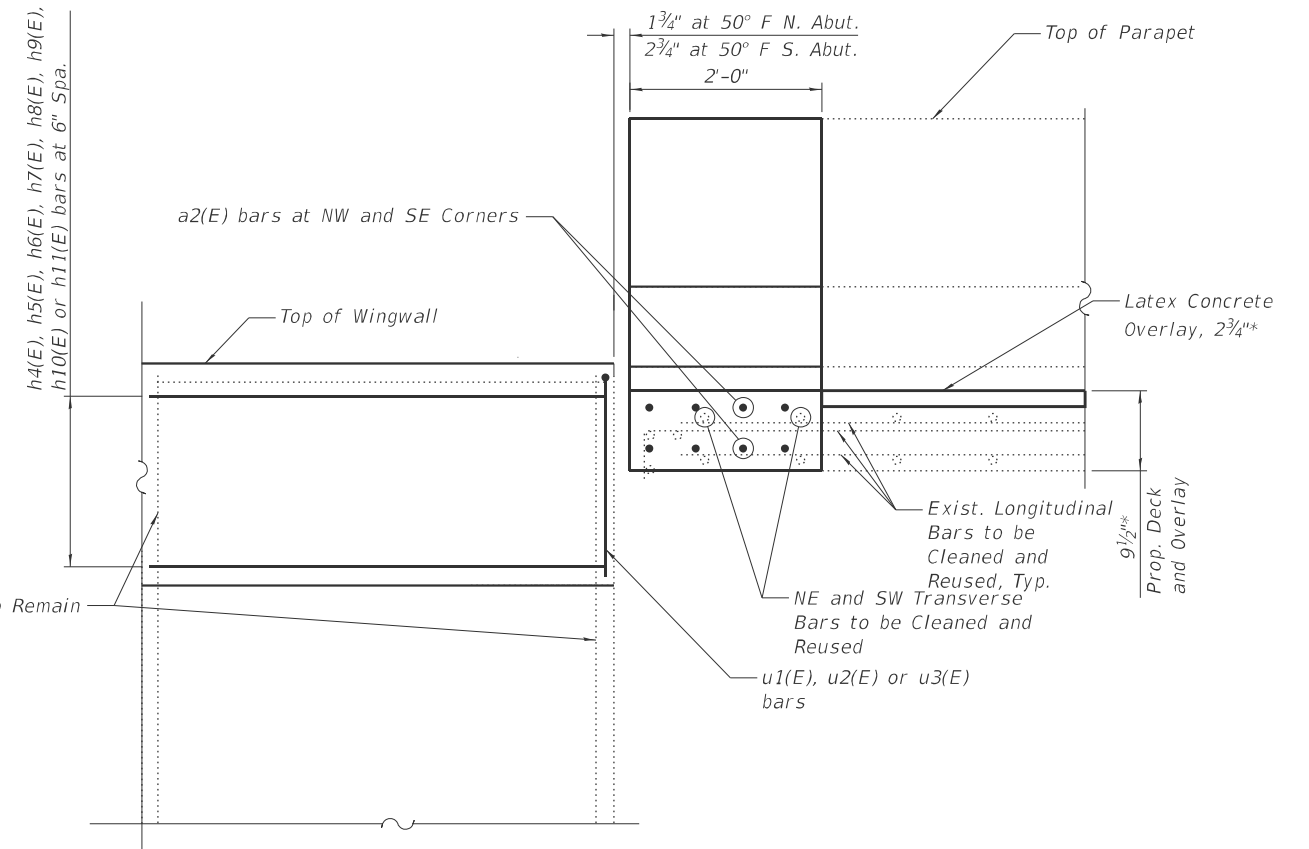
NORTH ABUTMENT JOINT REPLACEMENT PLAN
(South Abutment Similar)



SECTION B-B



SECTION A-A



SECTION C-C

NOTES:

1. Joint opening indicated is based on previous as-built plans for and is for an installation temperature of 50 degrees. Contractor shall adjust dimensions accordingly based on temperature at time of installation.



USER NAME = MazenSyed	DESIGNED - MS	REVISED -
	DRAWN - NMB	REVISED -
	CHECKED - STB	REVISED -
PLOT DATE = 09/23/2025	DATE - 08/08/2025	REVISED -

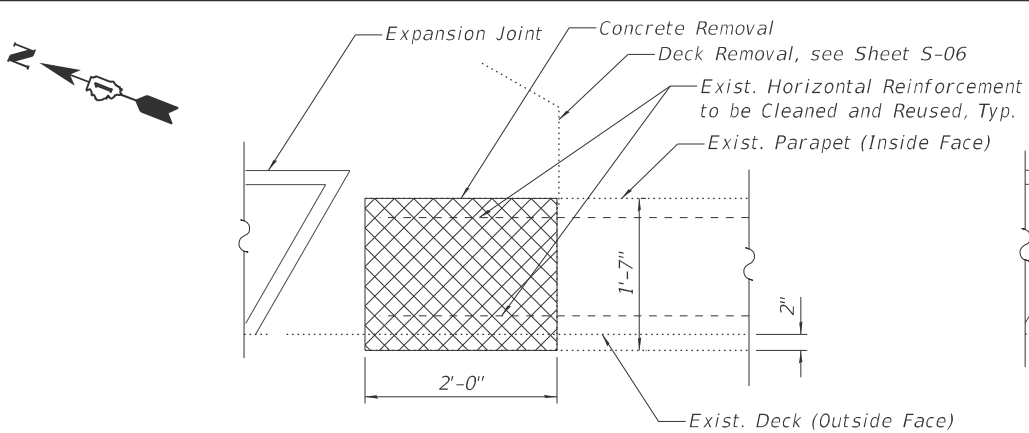
STATE OF ILLINOIS
DEPARTMENT OF TRANSPORTATION

EXPANSION JOINT RECONSTRUCTION DETAILS I
STRUCTURE NO. 056-0037

SCALE: N.T.S. SHEET S-07 OF S-11 SHEETS STA. TO STA.

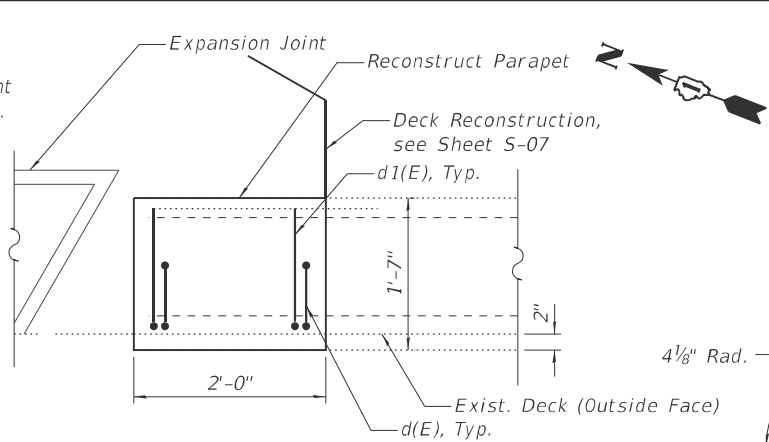
F.A.P. RTE.	SECTION	COUNTY	TOTAL SHEETS	SHEET NO.
336	(111-BI) BDR,BJR 25	MCHENRY	33	21
CONTRACT NO. 62Y05				
ILLINOIS FED. AID PROJECT				

MODEL: Expansion Joint Details 1 (Sheet)
FILE NAME: T:\TRG\Business\Clients\DOT\Projects\22-145 PTB 205-003 VAVWork Order 071400 CADD\DOT\Projects\22-145 PTB 205-003 VAVWork Order 071400 CADD_Sheets\Structures\162Y05-Sht-E-Expansion Joint Details 1.dgn



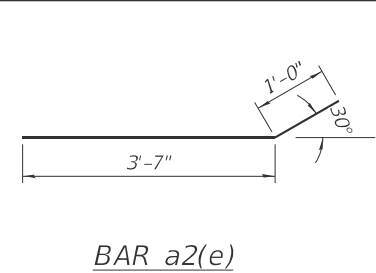
**PARAPET REMOVAL
PLAN**

(Northwest Deck Corner Shown,
Other Corners Similar)

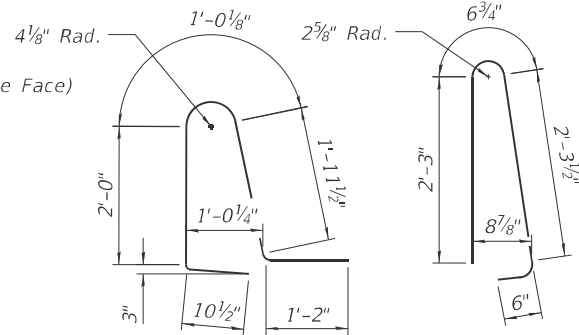


**PARAPET RECONSTRUCTION
PLAN**

(Northwest Deck Corner Shown,
Other Corners Similar)

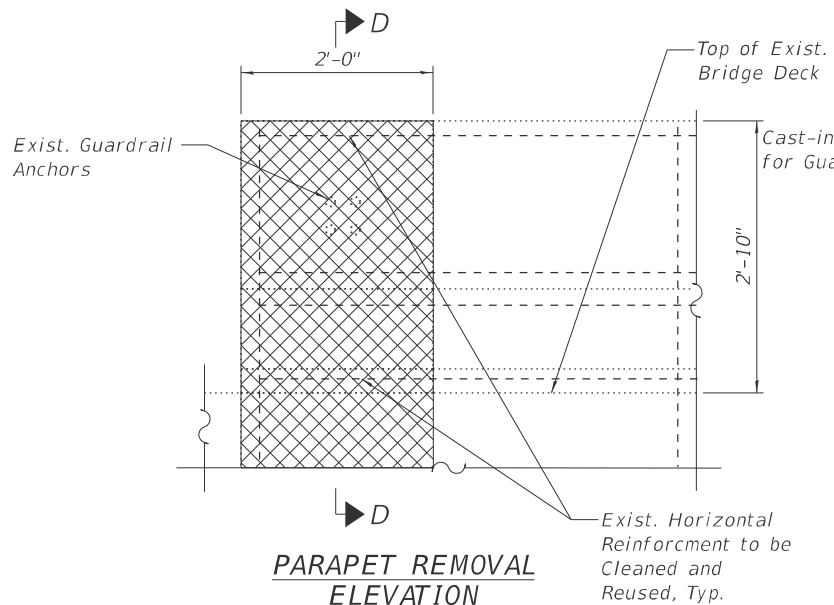


BAR a2(e)

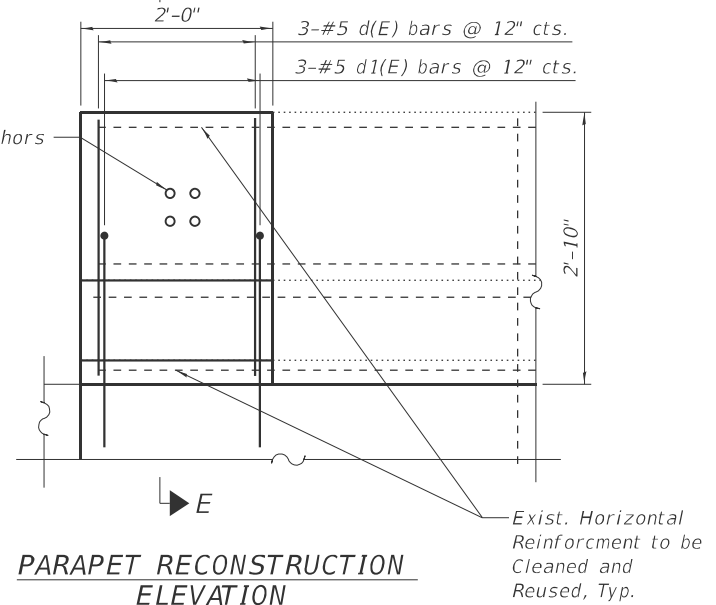


BAR d1(E)

BAR d(E)

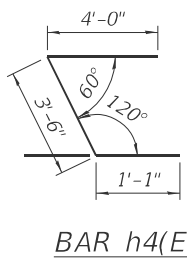


**PARAPET REMOVAL
ELEVATION**

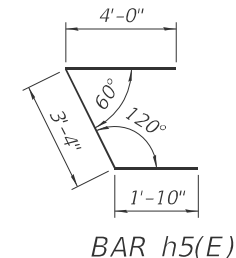


**PARAPET RECONSTRUCTION
ELEVATION**

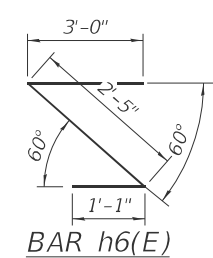
* Contractor to verify location in the field
to match exist. guardrail connection



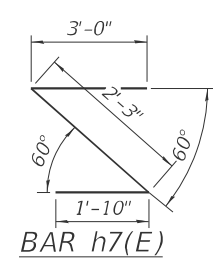
BAR h4(E)



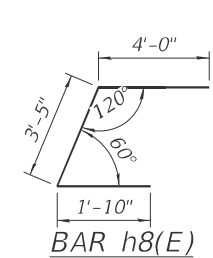
BAR h5(E)



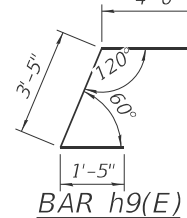
BAR h6(E)



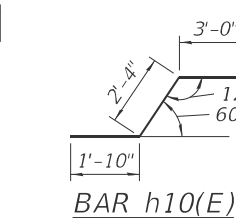
BAR h7(E)



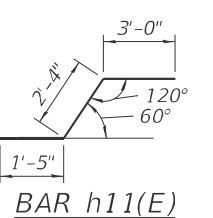
BAR h8(E)



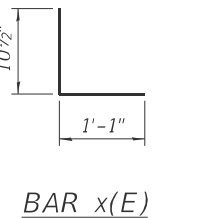
BAR h9(E)



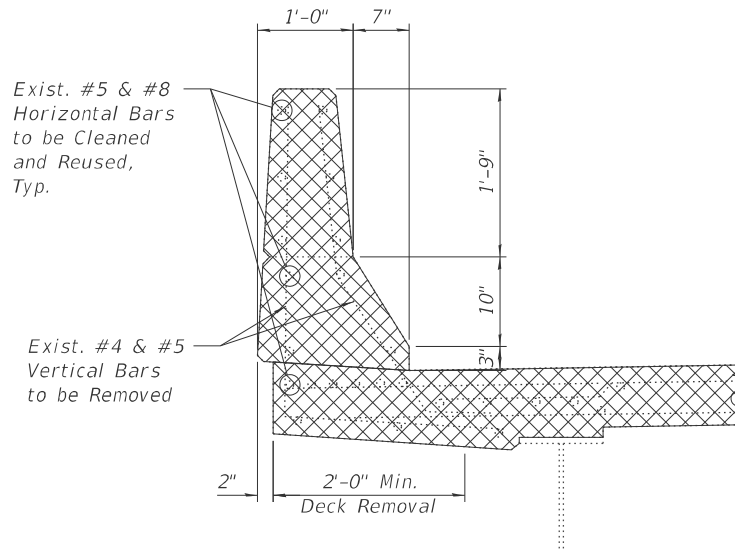
BAR h10(E)



BAR h11(E)

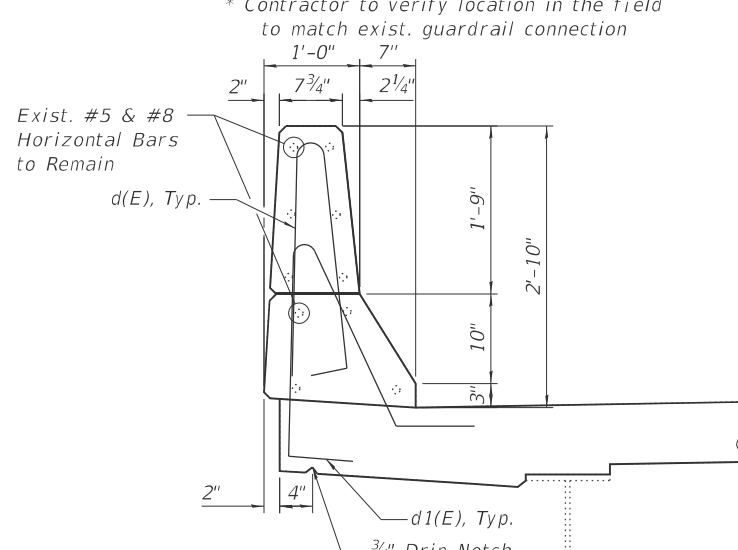


BAR x(E)



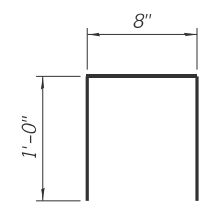
SECTION D-D

(Four Corners of Bridge
at Joints Similar)

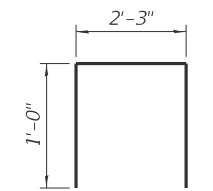


SECTION E-E

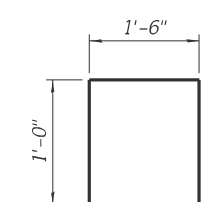
(Four Corners of Bridge
at Joints Similar)



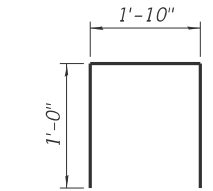
BAR u(E)



BAR u2(E)



BAR u1(E)



BAR u3(E)

LEGEND



Concrete Removal

NOTES:

- Existing reinforcement extending into the removal area shall be cleaned, straightened and incorporated into the new construction. Any existing reinforcement bars intended for reuse and damaged during concrete removal operations shall be repaired or replaced using an approved bar splicer or anchorage system to the satisfaction of the Engineer. Cost included with Concrete Removal.
- Any reinforcing steel exposed during concrete removal shall be cleaned and touched up with zinc rich primer prior to placement of new concrete.

MINIMUM BAR LAP

#5 BAR = 3'-1"
#6 BAR = 4'-5"

BILL OF MATERIAL				
Bar	No.	Size	Length	Shape
a(E)	32	#5	6'-6"	—
a1(E)	32	#5	21'-10"	—
a2(E)	16	#5	4'-7"	—
a3(E)	16	#5	3'-3"	—
d(E)	12	#5	5'-8"	—
d1(E)	12	#5	7'-1"	—
h(E)	16	#6	21'-10"	—
h4(E)	2	#5	8'-7"	—
h5(E)	2	#5	9'-2"	—
h6(E)	2	#5	6'-6"	—
h7(E)	2	#5	7'-1"	—
h8(E)	2	#5	9'-3"	—
h9(E)	2	#5	8'-10"	—
h10(E)	2	#5	7'-2"	—
h11(E)	2	#5	6'-9"	—
u(E)	108	#5	2'-8"	—
u1(E)	4	#5	3'-6"	—
u2(E)	8	#5	4'-3"	—
u3(E)	4	#5	3'-10"	—
x(E)	90	#5	2'-0"	—
Concrete Removal			Cu. Yd.	12
Reinforcement Bars, Epoxy Coated			Pound	2,450
Concrete Superstructure			Cu. Yd.	11.2



USER NAME = rileywhite	DESIGNED - MS	REVISED -
	DRAWN - NMB	REVISED -
	CHECKED - STB	REVISED -
PLOT DATE = 09/23/2025	DATE - 08/08/2025	REVISED -

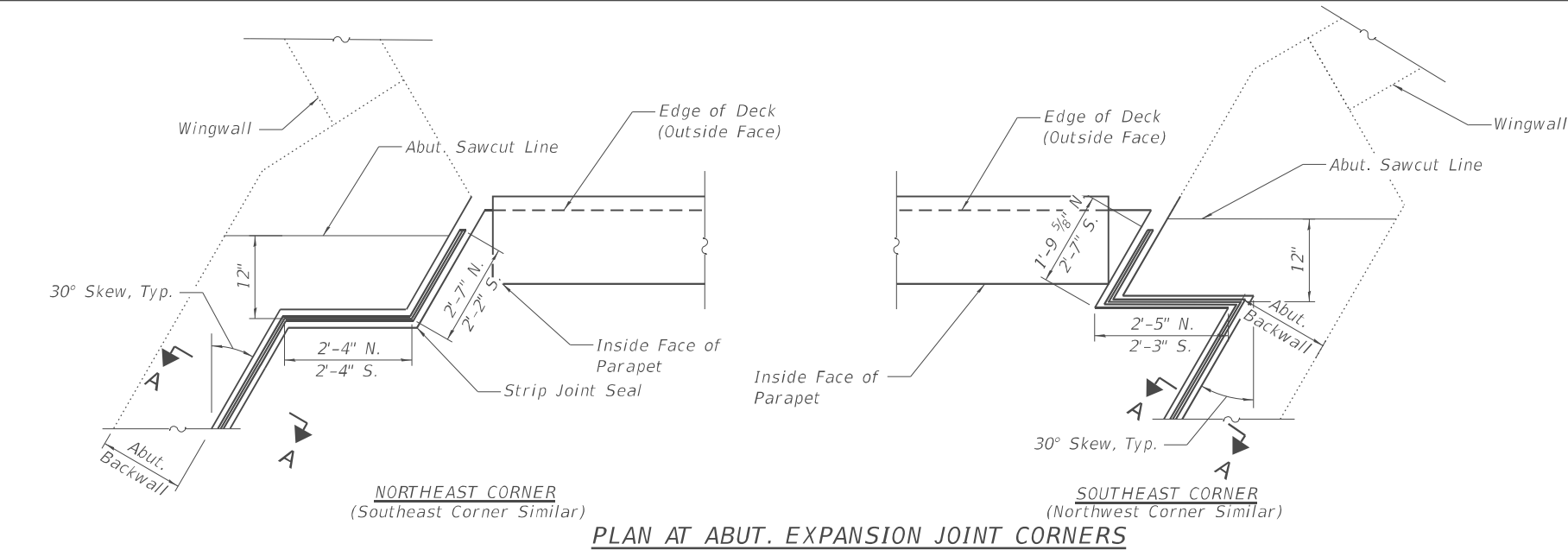
**STATE OF ILLINOIS
DEPARTMENT OF TRANSPORTATION**

**EXPANSION JOINT RECONSTRUCTION DETAILS II
STRUCTURE NO. 056-0037**

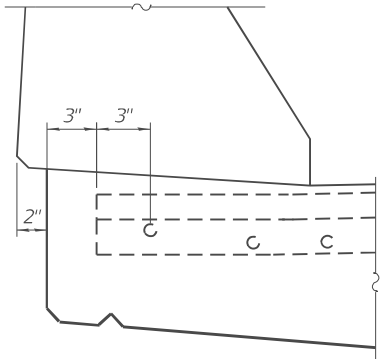
SCALE: 1"=1'-0" SHEET S-08 OF S-11 SHEETS STA. TO STA.

F.A.P RTE.	SECTION	COUNTY	TOTAL SHEETS	SHEET NO.
336	(111-BI) BDR,BJR 25	MCHENRY	33	22
CONTRACT NO. 62Y05				
ILLINOIS FED.AID PROJECT				

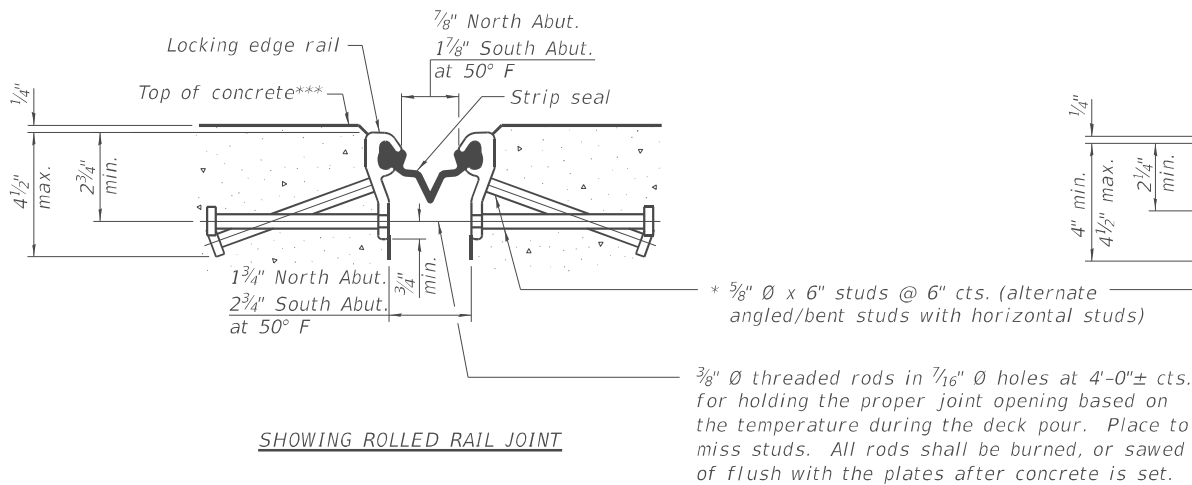
MODEL: Preformed Joint Strip Seal [Sheet]
FILE NAME: T:\TRG\Business\Clients\DOT\Projects\22-145 PTB 205-003 VAVWork Order 071400 CADD\402 CADD_Sheets\Structures\162Y05-SH+Preformed Joint Strip Seal.dgn



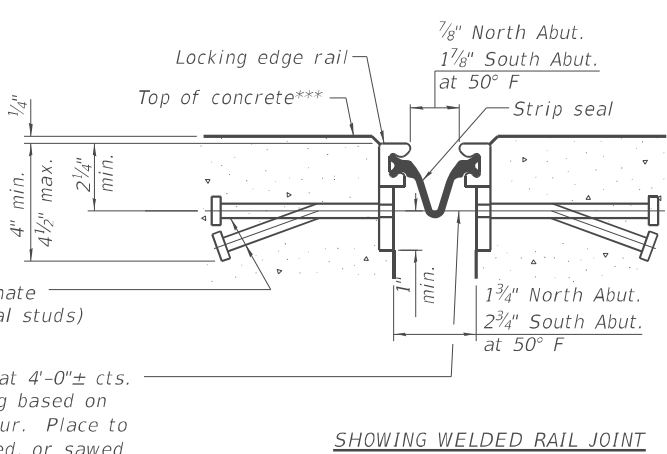
PLAN AT ABUT. EXPANSION JOINT CORNERS



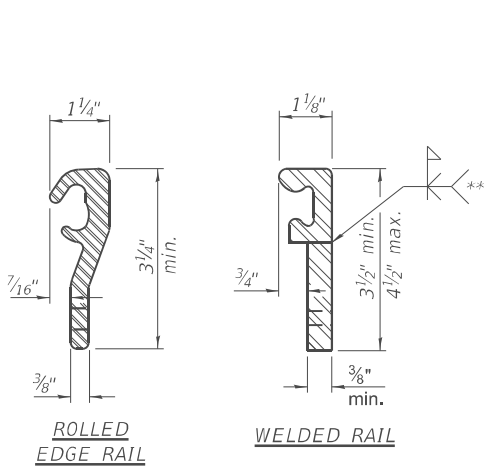
SECTION AT PARAPET



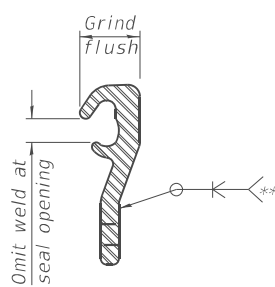
SHOWING ROLLED RAIL JOINT



SHOWING WELDED RAIL JOINT



LOCKING EDGE RAILS



LOCKING EDGE RAIL SPLICE

The inside of the locking edge rail groove shall be free of weld residue. Rolled rail shown, welded rail similar.

BILL OF MATERIAL

Item	Unit	Total
Preformed Joint Strip Seal	Foot	118



USER NAME = nickbrustin	DESIGNED - MS	REvised -
	DRAWN - NMB	REvised -
	CHECKED - STB	REvised -
PLOT DATE = 09/23/2025	DATE - 08/08/2025	REvised -

STATE OF ILLINOIS
DEPARTMENT OF TRANSPORTATION

PREFORMED JOINT STRIP SEAL
STRUCTURE NO. 056-0037

SCALE: N.T.S. SHEET S-09 OF S-11 SHEETS STA. TO STA.

F.A.P RTE.	SECTION	COUNTY	TOTAL SHEETS	SHEET NO.
336	(111-BI) BDR,BJR 25	MCHENRY	33	23
CONTRACT NO. 62Y05				
ILLINOIS FED. AID PROJECT				

MODEL: Bar Splicer Details (Sheet)
FILE NAME: T:\TRG\Business\Clients\IDOT\Projects\22-145 PTB 205-003 V\Work Order 071400 CADD\402 CADD_Sheets\Structures\ID162Y05-Shr-Bar Splicer details.dgn

BSD-1

5-15-2023



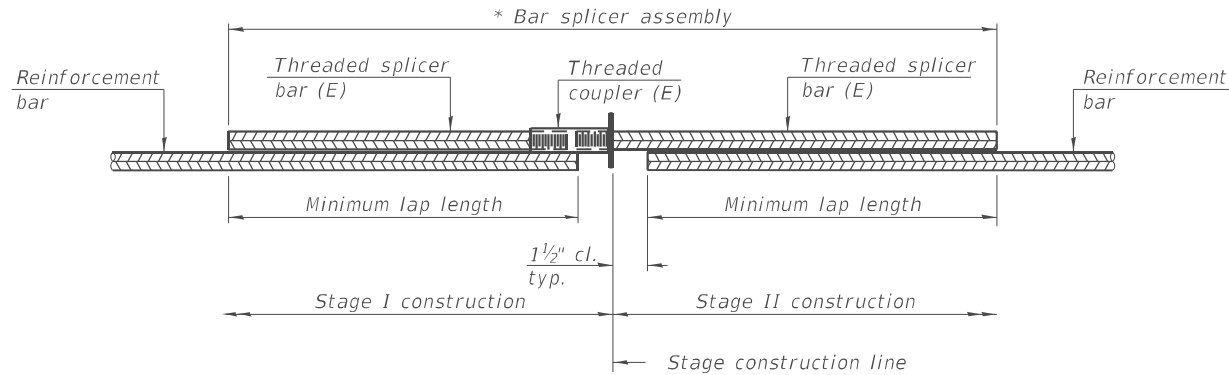
USER NAME = nickbrustin	DESIGNED - MS	REVISED -
	DRAWN - MS	REVISED -
	CHECKED - STB	REVISED -
PLOT DATE = 09/23/2025	DATE - 08/08/2025	REVISED -

STATE OF ILLINOIS
DEPARTMENT OF TRANSPORTATION

BAR SPLICER DETAILS
STRUCTURE NO. 056-0037

SCALE: N.T.S. SHEET S-10 OF S-11 SHEETS STA. TO STA.

F.A.P RTE.	SECTION	COUNTY	TOTAL SHEETS	SHEET NO.
336	(111-BI) BDR,BJR 25	MCHENRY	33	24
CONTRACT NO. 62Y05				
ILLINOIS FED. AID PROJECT				



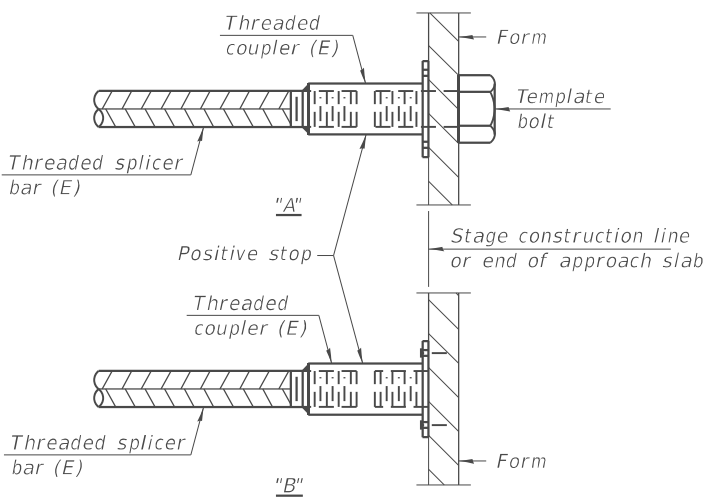
STANDARD BAR SPLICER ASSEMBLY PLAN

Only bar splicer assemblies as presented on the approved QPL list may be used.

Threaded splicer bar length = min. lap length + 1½" + thread length

* Epoxy not required on Bar Splicer Assembly components used in conjunction with black bars.

Location	Bar size	No. assemblies required	Minimum lap length
Deck Edge Beam	#5	24	2'-11"
Backwall	#6	8	3'-6"

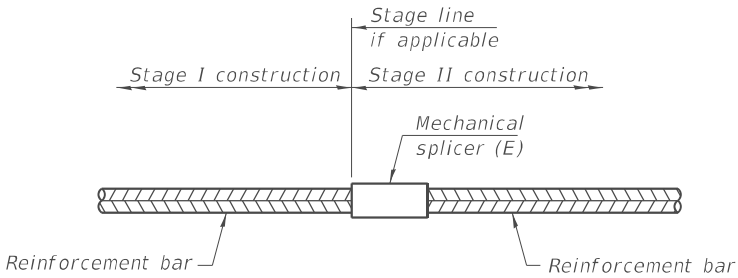


INSTALLATION AND SETTING METHODS

"A" : Set bar splicer assembly by means of a template bolt.

"B" : Set bar splicer assembly by nailing to wood forms or cementing to steel forms.

(E) : Indicates epoxy coating.

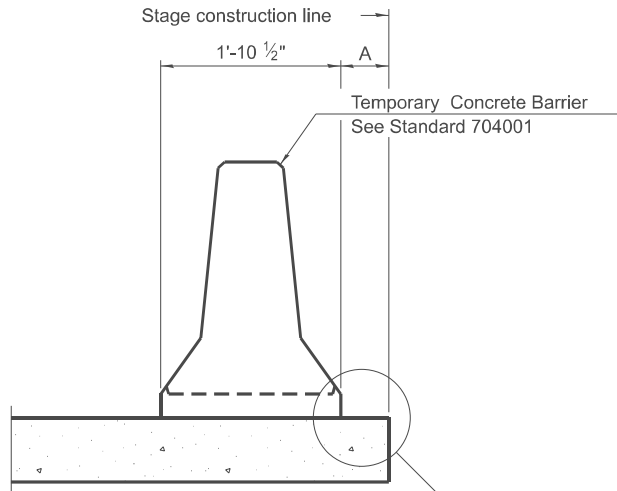


STANDARD MECHANICAL SPLICER

Location	Bar size	No. assemblies required

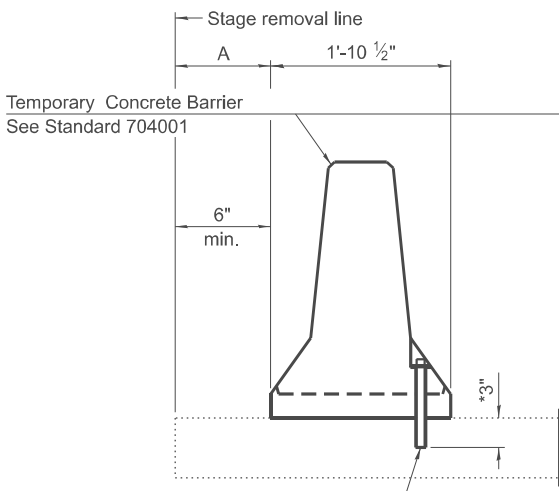
Notes:
Splicer bars shall be deformed with threaded ends and have a minimum 60 ksi yield strength.
All reinforcement shall be lapped and tied to the splicer bars.
Bar splicer assemblies shall be epoxy coated according to the requirements for reinforcement bars. See Section 508 of the Standard Specifications.
See approved list of bar splicer assemblies and mechanical splicers for alternatives.

MODEL: Temporary Barrier Details (Sheet)
FILE NAME: T:\TRG\Business\Clients\IDOT\Projects\22-145 PTB 205-003 VAVWork Order 071400 CADD_Sheets\Structures\162Y05-Shr-Temporary Barrier Details.dgn



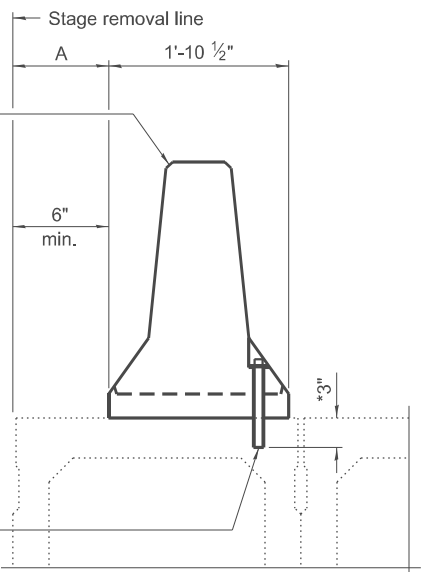
When "A" is 3'-1" or less, the temporary concrete barrier shall be restrained to the new slab according to Detail I, II or III. No restraint is required when "A" is greater than 3'-1".

NEW SLAB OR NEW DECK BEAM



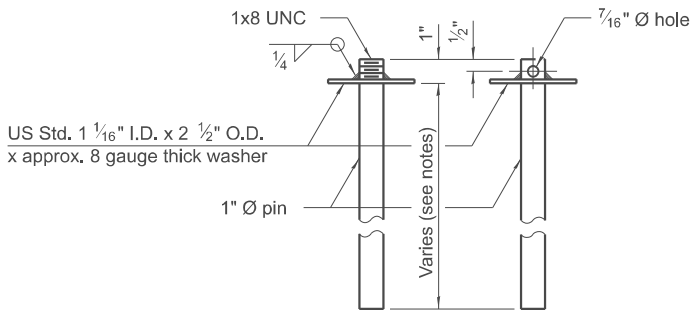
Drill 3-1 1/4" Ø Holes in existing slab for 1" Ø restraining pins. Traffic side only. Cost of restraining pins are included with Temporary Concrete Barrier. No restraint is required when "A" is greater than 3'-1".

EXISTING SLAB



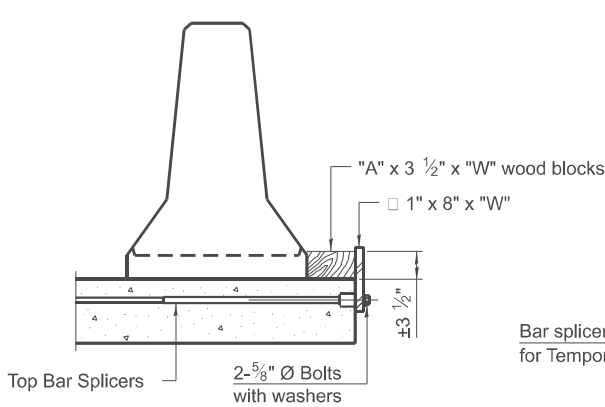
* When hot-mix asphalt wearing surface is present, embedment shall be 3" plus the wearing surface depth.

EXISTING DECK BEAM

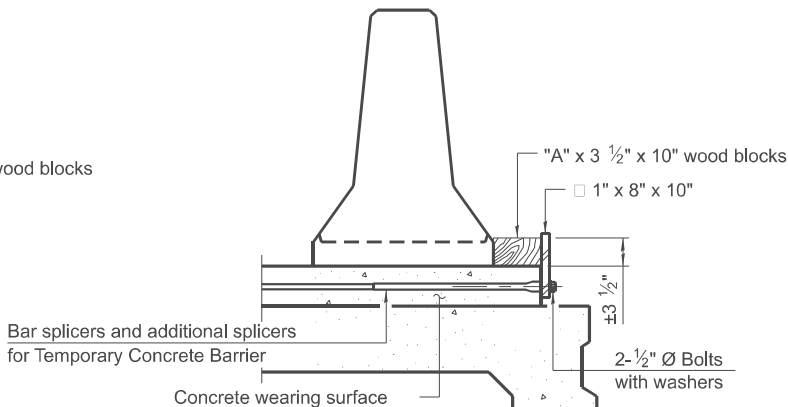


RESTRAINING PIN

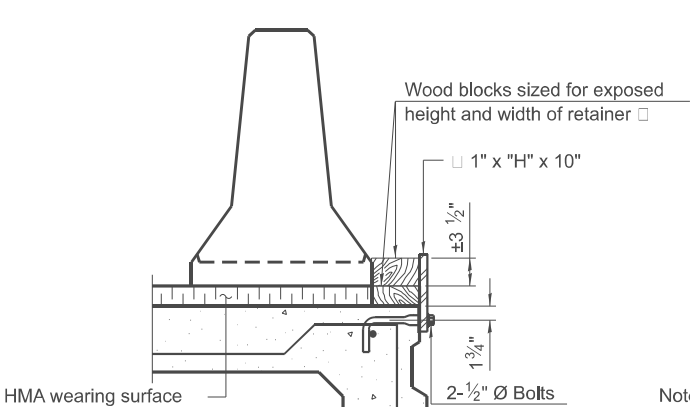
SECTIONS THRU SLAB OR DECK BEAM



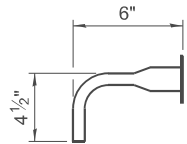
DETAIL I



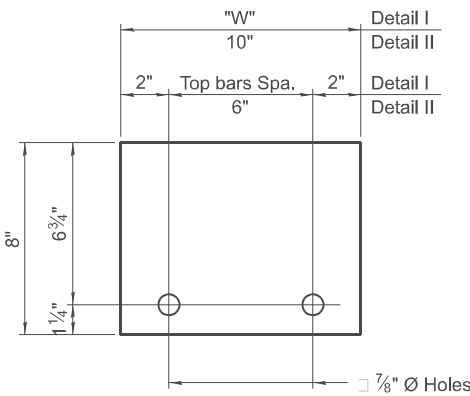
DETAIL II



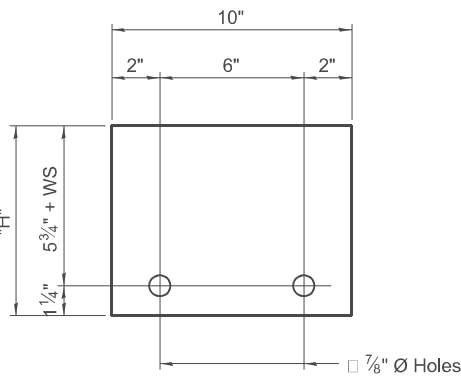
DETAIL III



BAR SPLICER FOR #4 BAR - DETAIL III



STEEL RETAINER 1" x 8" x "W"
(Detail I and II)



STEEL RETAINER 1" x "H" x 10"
(Detail III)

Notes:
Cost of retainer assembly is included with Temporary Concrete Barrier.
A retainer assembly shall be located at the approximate 1/4 of each temporary concrete barrier.
The retainer plate shall not be removed until the concrete on the adjacent stage is ready to be poured. For Detail III applications the retainer plate shall not be removed until just prior to placing the adjacent beam.
When the 'A' dimension is less than 1 1/2", the wood block shall be omitted and the barrier shall be placed in direct contact with the steel retainer plate. For deck beam applications the minimum required 'A' distance is 6" to accommodate the shear key clamping device.

Detail I - Installation for a new bridge deck or bridge slab.

Detail II - Installation for a new deck beam with an initial concrete wearing surface. Additional bar splicers shall be provided at 6'-0" centers and paired with the bar splicers of the concrete wearing surface reinforcement to accommodate the installation of the retainer assemblies. The cost of the additional bar splicers is included with the concrete wearing surface.

Detail III - Installation for a new deck beam with no initial wearing surface or with an initial hot-mix asphalt (HMA) wearing surface present. The deck beam directly beneath the temporary concrete barrier shall be fabricated with bar splicer inserts in the side of the beam, as detailed, to accommodate the installation of the retainer assemblies. A pair of bar splicers, 6" apart, shall be placed at 6'-0" centers along the length of the beam. The cost of the bar splicers is included with the deck beam.

RAILING CRITERIA

NCHRP 350 Test Level	3
Railing Weight (plf)	440

R-27

5-15-2023



USER NAME	= rileywhite
PLOT DATE	= 9/23/2025

DESIGNED	- MS
DRAWN	- MS
CHECKED	- STB
DATE	- 08/29/2025

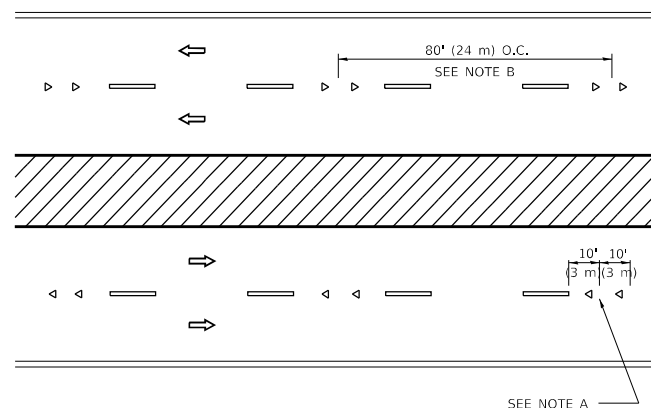
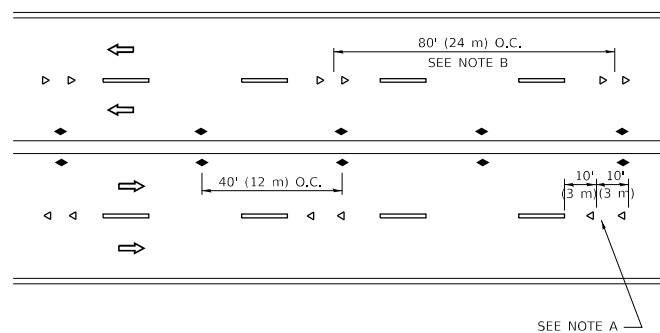
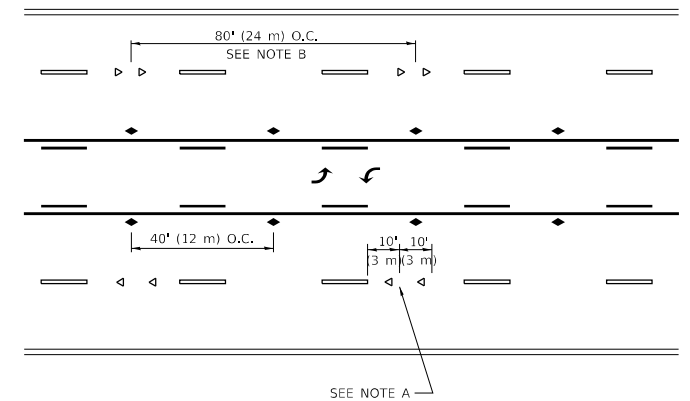
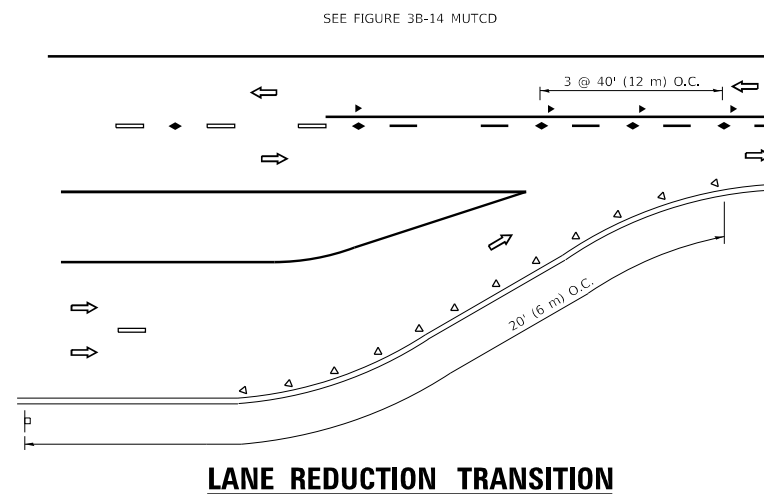
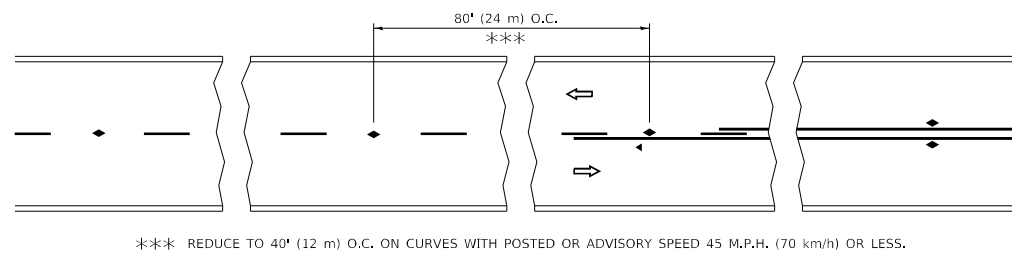
REVISED	-
REVISED	-
REVISED	-
REVISED	-

STATE OF ILLINOIS
DEPARTMENT OF TRANSPORTATION

TEMPORARY CONCRETE BARRIER
STRUCTURE NO. 056-0037

SCALE: N.T.S. SHEET S-11 OF S-11 SHEETS STA. TO STA.

F.A.P. RTE.	SECTION	COUNTY	TOTAL SHEETS	SHEET NO.
336	(111-B1) BDR,BJR 25	MCHENRY	33	25
CONTRACT NO. 62Y05				
ILLINOIS FED. AID PROJECT				

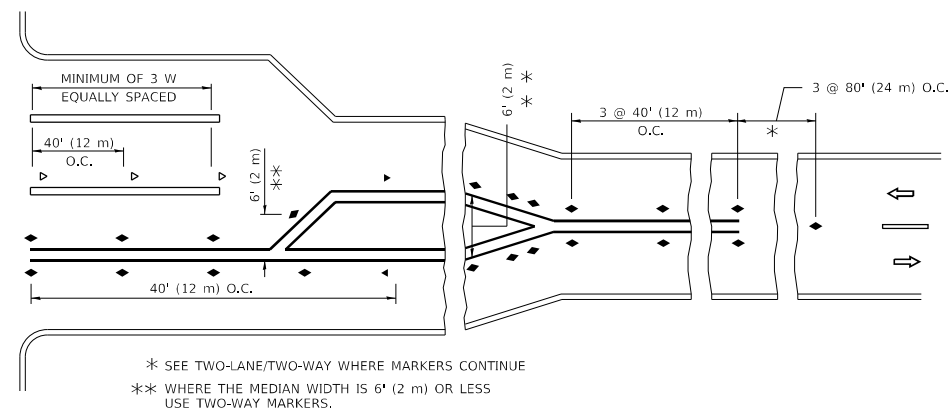
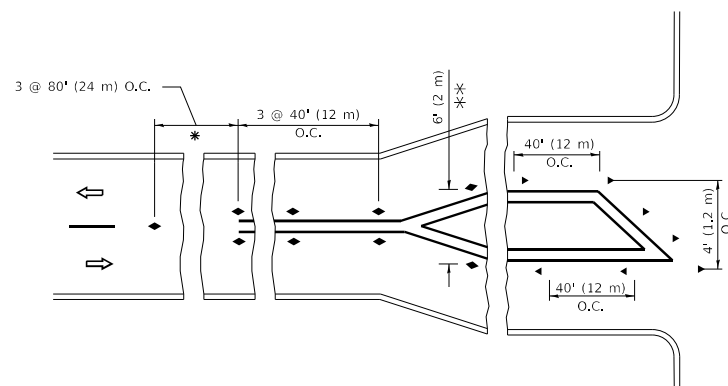


- ## GENERAL NOTES

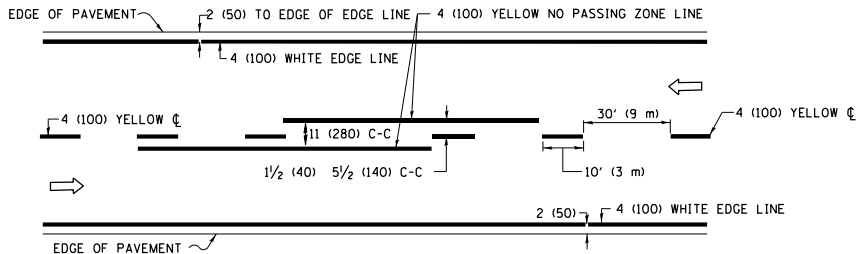
1. MARKERS USED WITH DASHED LINES SHALL BE CENTERED IN THE GAP BETWEEN SEGMENTS.
2. MARKERS USED ADJACENT TO SOLID LINES SHALL BE OFFSET 2 TO 3 (50 TO 75) TOWARD TRAFFIC AS SHOWN.
3. MARKERS THROUGH TANGENTS LESS THAN 500' (150 m) IN LENGTH BETWEEN CURVES SHALL BE INSTALLED AT THE LESSER OF THE TWO CURVE SPACINGS.
4. MARKERS ARE TO BE USED ADJACENT TO BOTH SOLID WHITE LINES IN DUAL LEFT TURN LANES

- ### LANE MARKER NOTES

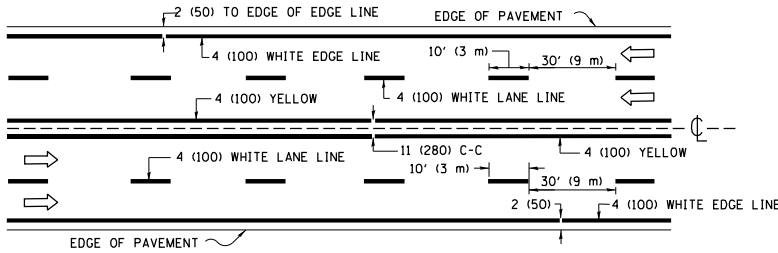
- A. USE DOUBLE LANE LINE MARKERS SPACED AS SHOWN.
- B. REDUCE TO 40' (12 m) O.C. ON CURVES WHERE ADVISORY SPEEDS ARE 10 M.P.H (20 km/h) LOWER THAN POSTED SPEEDS.



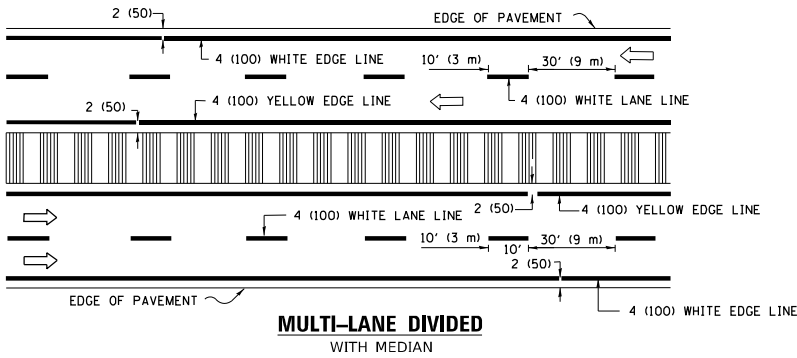
FILE NAME: D:\PROJECTS\2019\11-11-2019\11-11-2019.DWG	USER NAME = footenj	DESIGNED -	REVISED - T. RAMMACHER 03-12-99	STATE OF ILLINOIS DEPARTMENT OF TRANSPORTATION	TYPICAL APPLICATIONS RAISED REFLECTIVE PAVEMENT MARKERS (SNOW-PLOW RESISTANT)				F.A.P. RTE.	SECTION	COUNTY	TOTAL SHEETS	SHEET NO.
		DRAWN -	REVISED - T. RAMMACHER 01-06-00						336	(111-B) BDR,BJR 25	MCHENRY	33	30
	PLOT SCALE = 50,0000 ' / in.	CHECKED -	REVISED - C. JUCIUS 09-09-09		TC-11				CONTRACT NO.62Y05				
	PLOT DATE = 3/4/2019	DATE -	REVISED - C. JUCIUS 07-01-13		SCALE: NONE	SHEET 1	OF 1	SHEETS	STA.	TO STA.			
											ILLINOIS	FED. AID PROJECT	



2-LANE ROADWAY

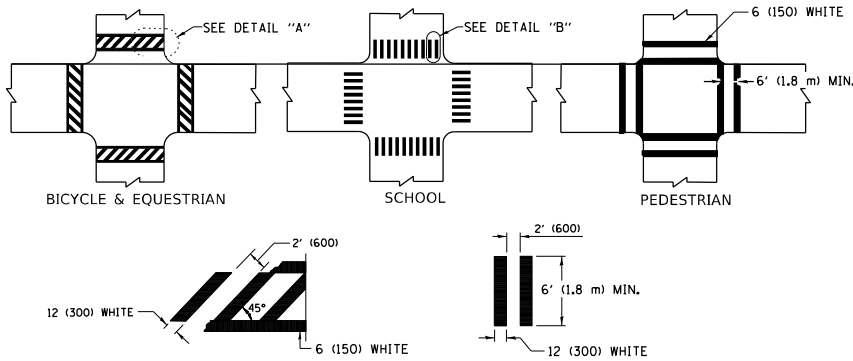


MULTI-LANE UNDIVIDED



MULTI-LANE DIVIDED WITH MEDIAN

TYPICAL LANE AND EDGE LINE MARKING

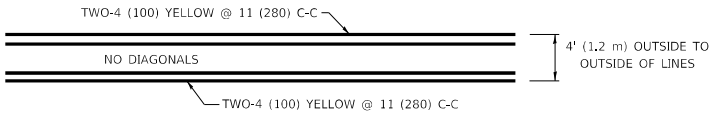


DETAIL "A"

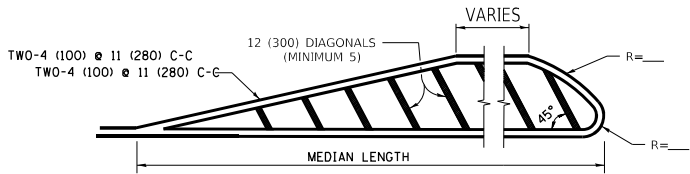
DETAIL "B"

TYPICAL CROSSWALK MARKING

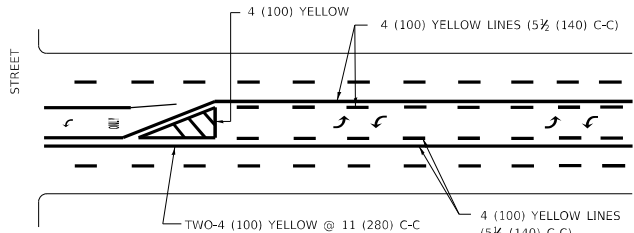
* MARKINGS SHALL BE INSTALLED PARALLEL TO THE CENTERLINE OF THE ROAD WHICH IT CROSSES



4' (1.2 m) WIDE MEDIANS ONLY

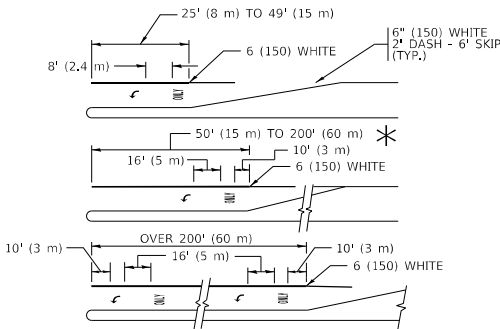


MEDIANS OVER 4' (1.2 m) WIDE



MEDIAN WITH TWO-WAY LEFT TURN LANE

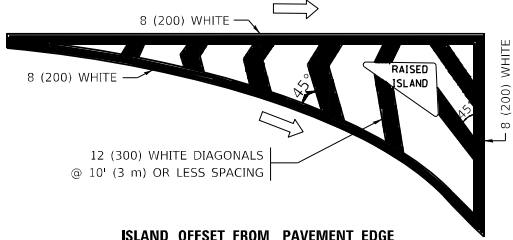
TYPICAL PAINTED MEDIAN MARKING



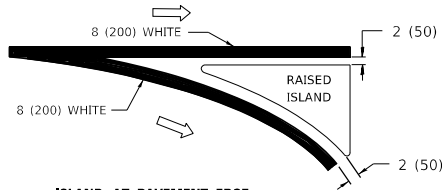
FULL SIZE LETTERS 8' (2.4 m) AND ARROWS SHALL BE USED.
AREA = 15.6 SQ. FT. (1.5 m²) ONLY AREA = 20.8 SQ. FT. (1.9 m²)
TURN LANES IN EXCESS OF 400' (120 m) IN LENGTH MAY HAVE AN ADDITIONAL SET OF ARROW - "ONLY" INSTALLED MIDWAY BETWEEN THE OTHER TWO SETS OF ARROW - "ONLY".

TYPICAL LEFT (OR RIGHT) TURN LANE

TYPICAL TURN LANE MARKING

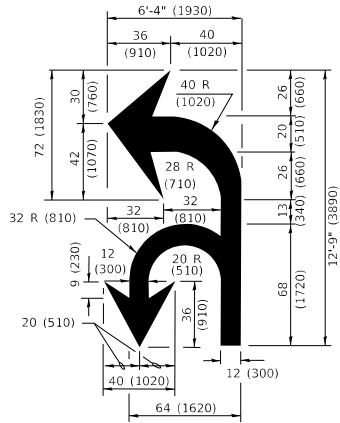


ISLAND OFFSET FROM PAVEMENT EDGE

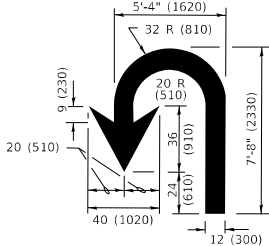


ISLAND AT PAVEMENT EDGE

TYPICAL ISLAND MARKING



COMBINATION LEFT AND U-TURN



U-TURN

LANE REDUCTION TRANSITION

* LANE REDUCTION ARROWS REQUIRED AT SPEEDS OF 45 MPH OR GREATER OR WHEN SPECIFIED IN PLANS.

TYPE OF MARKING	WIDTH OF LINE	PATTERN	COLOR	SPACING / REMARKS
CENTERLINE ON 2 LANE PAVEMENT	4 (100)	SKIP-DASH	YELLOW	10' (3 m) LINE WITH 30' (9 m) SPACE
CENTERLINE ON MULTI-LANE UNDIVIDED PAVEMENT	2 @ 4 (100)	SOLID	YELLOW	11 (280) C-C
NO PASSING ZONE LINES: FOR ONE DIRECTION FOR BOTH DIRECTIONS	4 (100) 2 @ 4 (100)	SOLID SOLID	YELLOW YELLOW	5½ (140) C-C FROM SKIP-DASH CENTERLINE 11 (280) C-C OMIT SKIP-DASH CENTERLINE BETWEEN
LANE LINES	4 (100) 5 (125) ON FREEWAYS	SKIP-DASH SKIP-DASH	WHITE WHITE	10' (3 m) LINE WITH 30' (9 m) SPACE
DOTTED LINES (EXTENSIONS OF CENTER, LANE OR TURN LANE MARKINGS)	SAME AS LINE BEING EXTENDED	SKIP-DASH	SAME AS LINE BEING EXTENDED	2' (600) LINE WITH 6' (1.8 m) SPACE
EDGE LINES	4 (100)	SOLID	YELLOW-LEFT WHITE-RIGHT	OUTLINE MEDIANS IN YELLOW
TURN LANE MARKINGS	6 (150) LINE; FULL SIZE LETTERS & SYMBOLS (8' (2.4m))	SOLID	WHITE	SEE TYPICAL TURN LANE MARKING DETAIL
TWO WAY LEFT TURN MARKING	2 @ 4 (100) EACH DIRECTION 8' (2.4m) LEFT ARROW	SKIP-DASH AND SOLID IN PAIRS	YELLOW WHITE	10' (3 m) LINE WITH 30' (9 m) SPACE FOR SKIP-DASH; 5½ (140) C-C BETWEEN SOLID LINE AND SKIP-DASH LINE SEE TYPICAL TWO-WAY LEFT TURN MARKING DETAIL
CROSSWALK LINES (PEDESTRIAN) A. DIAGONALS (BIKE & EQUESTRIAN) B. LONGTUDINAL BARS (SCHOOL)	2 @ 6 (150) 12 (300) @ 45° 12 (300) @ 90°	SOLID SOLID SOLID	WHITE WHITE WHITE	NOT LESS THAN 6' (1.8 m) APART 2' (600) APART SEE TYPICAL CROSSWALK MARKING DETAILS.
STOP LINES	24 (600)	SOLID	WHITE	PLACE 4' (1.2 m) IN ADVANCE OF AND PARALLEL TO CROSSWALK, IF PRESENT. OTHERWISE, PLACE AT DESIRED STOPPING POINT, PARALLEL TO CROSSROAD CENTERLINE, WHERE POSSIBLE
PAINTED MEDIANS	2 @ 4 (100) WITH 12 (300) DIAGONALS @ 45° NO DIAGONALS USED FOR 4' (1.2 m) WIDE MEDIANS	SOLID	YELLOW: TWO WAY TRAFFIC WHITE: ONE WAY TRAFFIC	11 (280) C-C FOR THE DOUBLE LINE SEE TYPICAL PAINTED MEDIAN MARKING.
GORE MARKING AND CHANNELIZING LINES	8 (200) WITH 12 (300) DIAGONALS @ 45°	SOLID	WHITE	DIAGONALS: 15' (4.5 m) C-C (LESS THAN 30MPH (50 km/h)) 20' (6 m) C-C 30MPH (50 km/h) TO 45MPH (70 km/h) 30' (9 m) C-C (OVER 45MPH (70 km/h))
RAILROAD CROSSING	24 (600) TRANSVERSE LINES; "RR" 15 6' (1.8 m) LETTERS; 16 (400) LINE FOR "X"	SOLID	WHITE	SEE STATE STANDARD 780001 AREA OF: *R*=3.6 SQ. FT. (0.33 m ²) EACH *X*=54.0 SQ. FT. (5.0 m ²)
SHOULDER DIAGONALS (REQUIRED FOR SHOULDERS ≥ 8')	12 (300) @ 45°	SOLID	WHITE - RIGHT YELLOW - LEFT	50' (15 m) C-C (LESS THAN 30MPH (50 km/h)) 75' (25 m) C-C (30 MPH (50 km/h) TO 45MPH (70 km/h)) 150' (45 m) C-C (OVER 45MPH (70 km/h))
U TURN ARROW	SEE DETAIL	SOLID	WHITE	16.3 SF
2 ARROW COMBINATION LEFT AND U TURN	SEE DETAIL	SOLID	WHITE	30.4 SF

FOR FURTHER DETAILS ON PAVEMENT MARKING REFER TO STANDARD SPECIFICATIONS FOR ROAD AND BRIDGE CONSTRUCTION AND STATE STANDARD 780001.

All dimensions are in inches (millimeters) unless otherwise shown.

USER NAME = footem]	DESIGNED - EVERS	REVISED - C. JUCIUS 09-09-09
	DRAWN -	REVISED - C. JUCIUS 07-01-13
PLOT SCALE = 50.0000 ' / in.	CHECKED -	REVISED - C. JUCIUS 12-21-15
PLOT DATE = 3/4/2019	DATE - 03-19-90	REVISED - C. JUCIUS 04-12-16

STATE OF ILLINOIS
DEPARTMENT OF TRANSPORTATION

DISTRICT ONE
TYPICAL PAVEMENT MARKINGS

SCALE: NONE SHEET 1 OF 2 SHEETS STA. TO STA.

F.A.P. RTE.	SECTION	COUNTY	TOTAL SHEETS	SHEET NO.
336	(111-B) BDR,BJR 25	MCHENRY	33	31
TC-13		CONTRACT NO.62Y05		
ILLINOIS		FED. AID PROJECT		

