

**STATE OF ILLINOIS**  
**DEPARTMENT OF TRANSPORTATION**

F.A.P. RTE.	SECTION	COUNTY	TOTAL SHEETS	SHEET NO.
322	(5,6,7)RS-5,SW-1,SR-1	Perry	32	1
		ILLINOIS	CONTRACT NO. 78B53	

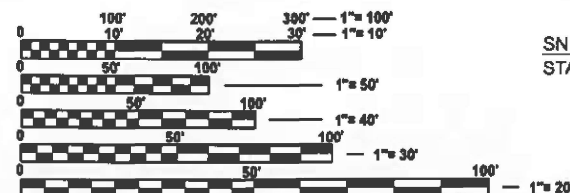
D-99-064-25

FOR INDEX OF SHEETS, SEE SHEET NO. 3  
FOR SUMMARY OF QUANTITIES, SEE SHEET NO. 5-8

**TRAFFIC DATA (2024)****ADT: 3,090 %TRUCKS: 3.72%****TOWNSHIPS****TAMAROA****COORDINATE SYSTEM**

**ESPG: 102671 - NAD 1983**  
**STATEPLANE ILLINOIS**  
**EAST FIPS 1201 FEET**

**DESIGN DESIGNATION : N/A**  
**POSTED SPEED : 30, 40, 55 MPH**



FULL SIZE PLANS HAVE BEEN PREPARED USING STANDARD ENGINEERING SCALES. REDUCED SIZED PLANS WILL NOT CONFORM TO STANDARD SCALES. IN MAKING MEASUREMENTS ON REDUCED PLANS, THE ABOVE SCALES MAY BE USED.

**J.U.L.I.E.**  
**JOINT UTILITY LOCATION INFORMATION FOR EXCAVATION**  
**1-800-892-0123**  
**OR 811**

**PROJECT ENGINEER: ZACHARY HUGHEY**  
**PROJECT MANAGER: SEAN GREENLEE**

**CONTRACT NO. 78B53**

# PROPOSED HIGHWAY PLANS

**FAP ROUTE 322 (US 51)**  
**SECTION (5,6,7)RS-5,SW-1,SR-1**  
**PROJECT STP-HSIP-U0V6(711)**  
**RESURFACING AND SAFETY SHOULDERS**  
**PERRY COUNTY**

C-99-097-25

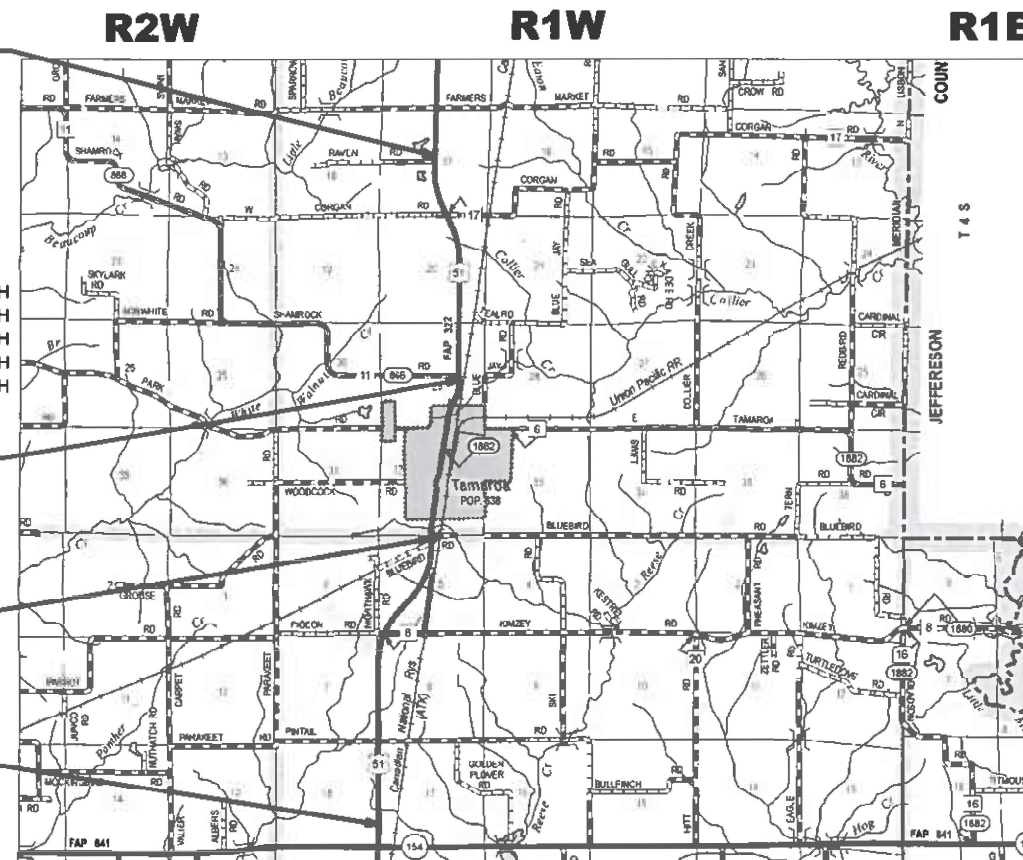
US 51 PROJECT ENDS  
STA. 585+66.32

STATION EQUATIONS:  
STA. 327+61.97 BK = STA. 327+60.07 AH  
STA. 367+03.70 BK = STA. 380+92.90 AH  
STA. 464+36.79 BK = STA. 465+76.55 AH  
STA. 544+05.37 BK = STA. 544+05.87 AH  
STA. 576+88.45 BK = STA. 584+69.00 AH

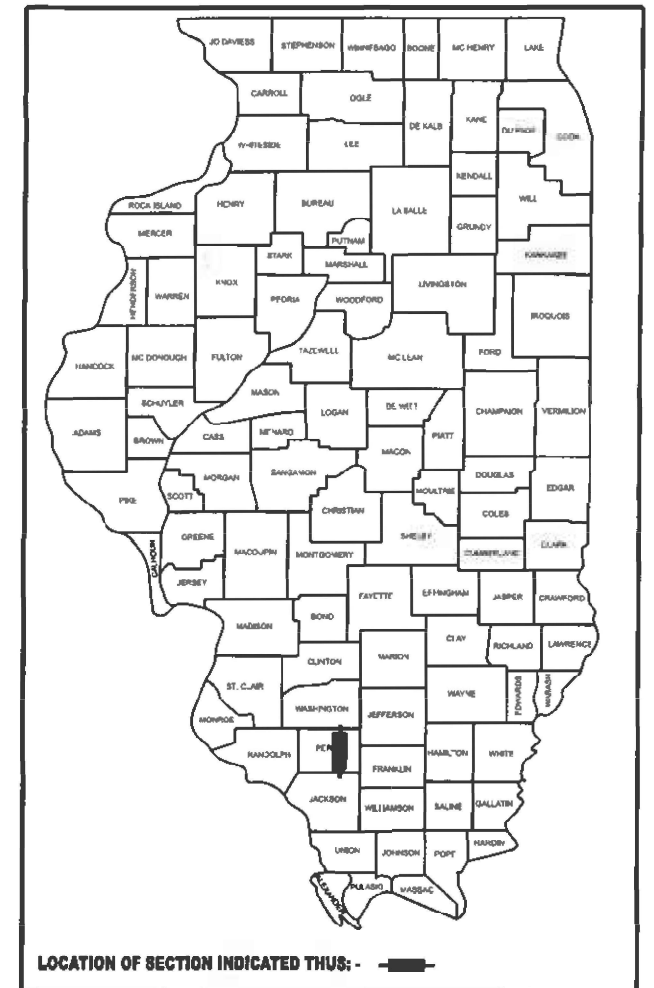
SN 073-2008 BRIDGE OMISSION  
STA. 466+87.57 TO STA. 467+07.8

RAILROAD OMISSION  
STA. 382+51.96 TO  
STA. 383+14.66

US 51 PROJECT BEGINS  
STA. 220+00.52



GROSS LENGTH = 34,257.69 FT. = 6.488 MILE  
NET LENGTH = 34,174.76 FT. = 6.472 MILE



LOCATION OF SECTION INDICATED THUS: -



**STATE OF ILLINOIS**  
**DEPARTMENT OF TRANSPORTATION**

SUBMITTED August 14 2025  
Lora S. Benning  
REGIONAL ENGINEER

October 3 2025  
Scott E. Etkin  
ENGINEER OF DESIGN AND ENVIRONMENT  
October 3 2025  
Harry  
DIRECTOR OF HIGHWAYS PROJECT IMPLEMENTATION

**PRINTED BY THE AUTHORITY**  
**OF THE STATE OF ILLINOIS**

MODEL: Signature Sheet [Sheet]  
FILE NAME: C:\work\2025\Illinois\gov\_zachary\_hughey\Illinois.gov\1075559\09\8B53-SHA-Cover\_31k.dgn

Prepared By: Susan Poe  
DISTRICT STUDIES & PLANS ENGINEER

Examined By: Nancy Heil HFS  
DISTRICT LAND ACQUISITION ENGINEER

Examined By: Core Nelson  
DISTRICT PROGRAM DEVELOPMENT ENGINEER

Examined By: Z COO  
DISTRICT OPERATIONS ENGINEER

Examined By: \_\_\_\_\_  
DISTRICT PROJECT IMPLEMENTATION ENGINEER

Examined By: Brewitt  
DISTRICT CONSTRUCTION ENGINEER

Examined By: Aan Hays  
DISTRICT MATERIALS ENGINEER

USER NAME = Zachary.Hughey	DESIGNED -	REVISED -
	DRAWN -	REVISED -
	CHECKED -	REVISED -
PLOT DATE = 8/1/2025	DATE -	REVISED -

STATE OF ILLINOIS  
DEPARTMENT OF TRANSPORTATION

SIGNATURE SHEET

SCALE: SHEET 2 OF 2 SHEETS STA. TO STA.

F.A.P. RTE.	SECTION	COUNTY	TOTAL SHEETS	SHEET NO.
322	(5.6.7)RS-6,SW-1,SR-1	Perry	32	2
CONTRACT NO. 78B53				
ILLINOIS FED. AID PROJECT				



INDEX OF SHEETS

SHEET NO	DESCRIPTION
1	COVER SHEET
2	SIGNATURE SHEET
3	INDEX OF SHEETS, HIGHWAY STANDARDS, GENERAL NOTES, COMMITMENTS, MTD CROSSING RESTRICTIONS
4	HMA MIX DESIGN
5-8	SUMMARY OF QUANTITIES
9-13	TYPICAL SECTIONS
14	LIFT THICKNESS REQUIREMENT DETAILS
15	RESURFACING SCHEDULE
16	PARKING LANE RESURFACING SCHEDULE
17	SHOULDER SCHEDULE
18-21	ENTRANCE AND SIDEROAD SCHEDULE
22	ADA RAMP SCHEDULE
23	PAVEMENT MARKING SCHEDULE
24	GEOPAK ELEMENTS
25	TIE POINTS
26	3RD SOUTH STREET ADA RAMP
27	ENTRANCE DETAILS
28	SIDEROAD DETAILS
29	RESURFACING TRANSITION DETAIL, MILLING TRANSITION DETAIL
30	MAINLINE BUTT JOINT DETAILS
31	CENTERLINE RUMBLE STRIP DETAIL
32	DISTRICT STANDARDS

HIGHWAY STANDARDS

000001-09 STANDARD SYMBOLS, ABBREVIATIONS AND PATTERNS  
001006 DECIMAL OF AN INCH AND OF A FOOT  
424001-12 PERPENDICULAR CURB RAMPS FOR SIDEWALKS  
424016-06 MID-BLOCK CURB RAMPS FOR SIDEWALKS  
482006-03 HMA SHOULDER ADJACENT TO RIGID PAVEMENT  
606001-09 CONCRETE CURB TYPE B & COMBINATION CONCRETE CURB & GUTTER  
642006-01 SHOULDER RUMBLE STRIPS, 8 IN  
701001-02 OFF-ROAD OPERATIONS, 2L, 2W, MORE THAN 15 FT AWAY  
701006-05 OFF-ROAD OPERATIONS, 2L, 2W, 15 FT TO 24 IN FROM PAVEMENT EDGE  
701011-04 OFF-ROAD MOVING OPERATIONS, 2L, 2W, DAY ONLY  
701301-04 LANE CLOSURE, 2L, 2W, SHORT TIME OPERATIONS  
701306-04 LANE CLOSURE, 2L, 2W, SLOW MOVING OPERATIONS DAY ONLY, FOR SPEEDS 45 MPH OR MORE  
701326-04 LANE CLOSURE, 2L, 2W, PAVEMENT WIDENING, FOR SPEEDS 45 MPH OR MORE  
701336-07 LANE CLOSURE, 2L, 2W, WORK AREAS IN SERIES, FOR SPEEDS 45MPH OR MORE  
701501-06 URBAN LANE CLOSURE, 2L, 2W, UNDIVIDED  
701801-06 SIDEWALK, CORNER OR CROSSWALK CLOSURE  
701901-11 TRAFFIC CONTROL DEVICES  
780001-05 TYPICAL PAVEMENT MARKINGS  
781001-04 TYPICAL APPLICATIONS RAISED REFLECTIVE PAVEMENT MARKERS

GENERAL NOTES

FACTORS USED FOR ESTIMATING PLAN QUANTITIES ARE AS FOLLOWS AND SHALL NOT BE USED FOR THE BASIS OF FINAL QUANTITIES:

ALL HOT MIX ASPHALT 2.016 TONS/CU. YD.  
ALL AGGREGATE 2.05 TONS/CU. YD.

THE ALGEBRAIC DIFFERENCE BETWEEN THE PAVEMENT AND SHOULDER SLOPES SHALL NOT EXCEED 8%. THE SHOULDER ON THE OUTSIDE OF SUPERELEVATED CURVES SHALL BE FLATTENED ACCORDINGLY.

THE QUANTITY OF SHORT TERM PAVEMENT MARKING SHOWN IN THE PLANS IS BASED ON ONE APPLICATION EACH FOR THE HMA SURFACE REMOVAL, BINDER COURSE, AND SURFACE COURSE

HMA RESURFACING SHALL BE PLACED IN A SEQUENCE THAT WILL MINIMIZE THE TIME THE CENTERLINE EDGE IS EXPOSED TO TRAFFIC. WHEN AT THE END OF A DAY'S OPERATION THE EXPOSED CENTERLINE EDGE IS GREATER THAN 2,000 FT, THE CONTRACTOR SHALL BE REQUIRED TO PAVE IN THE ADJACENT LANE ON THE FOLLOWING WORK DAY. PRIOR TO WINTER SHUTDOWN, RESURFACING ON ADJACENT LANES IS TO BE BROUGHT UP TO THE SAME ELEVATION.

LONGITUDINAL JOINT SEALANT SHALL BE PLACED UNDER THE HMA SURFACE COURSE

CONNECTING OF NEW OR EXISTING STORM SEWER TO NEW OR EXISTING INLETS OR MANHOLES SHALL BE MADE IN A MANNER WHICH RESULTS IN A NEAT AND WATERTIGHT JOINT. WHEN PLACED THROUGH THE WALL OF AN INLET OR MANHOLE, STORM SEWER PIPE SHALL BE PLACED OR CUT FLUSH WITH THE FACE OF THE WALL AND DRESSED WITH MORTAR TO PROVIDE A SMOOTH ROUNDED OR BEVELED EDGE. THIS WORK WILL NOT BE PAID FOR SEPARATELY, BUT SHALL BE CONSIDERED AS INCLUDED IN THE CONTRACT UNIT PRICES OF THE STORM SEWERS OR STRUCTURES INVOLVED.

VIBRATORY ROLLERS WILL NOT BE ALLOWED WITHIN THE CORPORATE LIMITS OF TAMAROA

INCIDENTAL HOT-MIX ASPHALT SURFACING SHALL BE PAVED IN A SEPARATE OPERATION FROM THE MAINLINE PAVEMENT

WHEN SHOULDER RESURFACING OF 6 FT OR LESS IS ALLOWED TO BE PLACED SIMULTANEOUSLY WITH THE ADJACENT TRAFFIC LANE, THE MAINLINE QUALITY MANAGEMENT PROGRAM WILL BE ENFORCED FOR THE MAINLINE AND SHOULDERS.

COMMITMENTS: NONE

MTD CROSSING RESTRICTIONS TABLE

ROUTE (US 51) SN & CENTERLINE STATION			EXISTING FILL HEIGHT OVER BOX CULVERT FOOT	THICKNESS OF EXISTING PAVEMENT OVER BOX CULVERT FOOT	MAXIMUM GROSS WEIGHT RESTRICTIONS TON	MTD CROSSING RESTRICTIONS
SN 073-7000	STA	227+00	2.7	1.25	40 TONS	EMPTY
SN 073-7006	STA	275+54	1.2	1.333	40 TONS	EMPTY
SN 073-7007	STA	366+01	5	0.875	40 TONS	EMPTY
SN 073-7008	STA	388+54	1.7	1.208	40 TONS	EMPTY
SN 073-2008	STA	466+98	N/A	N/A	40 TONS	EMPTY
SN 073-7009	STA	534+92	3.6		40 TONS	EMPTY

REV - MS

MODEL: Index of Sheets 1 (Sheet)  
FILE NAME: c:\pw\work\paw\illinois.gov\zachary\highway\illinois.gov\zachary\highway\8/6/2025\8/6/2025-SHB-Index-GenNotes.dgn

	U R N A M E = Z a b a r y . H g b y	DESIGNED -	REVISED -	STATE OF ILLINOIS DEPARTMENT OF TRANSPORTATION	INDEX OF SHEETS, HIGHWAY STANDARDS, GENERAL NOTES, COMMITMENTS, MTD CROSSING RESTRICTIONS	F.A.P RTE	SECTION	COUNTY	TOTAL SHEETS	SHEET NO.
		DRA W N -	REVISED -			322	(5,6,7)RS-5,SW-1,SR-1	Perry	32	3
		CHECKED -	REVISED -			CONTRACT NO. 78B53				
	PLOT DATE = 8/6/2025	DATE -	REVISED -			SCALE:	SHEET 1	OF 2	SHEETS	STA.
						ILLINOIS   FED. AID PROJECT				

MODEL: Index of Sheets 2 [Sheet]  
FILE NAME: c:\pw work\pwidot\illinois.gov\zachary.hughey@illinois.gov\d1102559\D978B53-ShtB-Index GenNotes.dgn

Locations	Hot-Mix Asphalt Surface Course
Mixture Use(s):	Hot-Mix Asphalt Surface Course, Mix C, N70
PG:	PG64-22
Design Air Voids:	4.0%, 70 Gyration Design
Mixture Composition: (Gradation Mixture)	IL-9.5mm
Friction Aggregate:	Mix C
Mixture Weight:	112 lbs/sq yd/in
Quality Management Program:	QCP
Sublot Size:	1,000 tons
Material Transfer Device	Yes

Locations	Hot-Mix Shoulders 8" (Lower lifts)
Mixture Use(s):	Hot-Mix Asphalt Binder Course, N30
PG:	PG64-22
Design Air Voids:	4.0%, 30 Gyration Design
Mixture Composition: (Gradation Mixture)	IL-19.0L
Friction Aggregate:	None
Mixture Weight:	112 lbs/sq yd/in
Quality Management Program:	QC/QA
Sublot Size:	3,000 tons
Material Transfer Device	No

Locations:	Hot-Mix Shoulders 2 3/4" (Surface lift), Hot-Mix Shoulders 8" (Surface lift), Incidental Hot-Mix Asphalt Surfacing
Mixture Use(s):	Hot-Mix Asphalt Surface Course, Mix C, N30
PG:	PG64-22
Design Air Voids:	4.0%. 30 Gyration Design
Mixture Composition: (Gradation Mixture)	IL-9.5L
Friction Aggregate:	None
Mixture Weight:	112 lbs/sq yd/in
Quality Management Program:	QC/QA
Sublot Size:	3,000 tons
Material Transfer Device	No

**STATE OF ILLINOIS  
DEPARTMENT OF TRANSPORTATION**

HMA MIX DESIGN				
SCALE:	SHEET 2	OF 2	SHEETS	STA. TO STA.

F.A.P RTE.	SECTION	COUNTY	TOTAL SHEETS	SHEET NO.
322	(5,6,7)RS-5,SW-1,SR-1	Perry	32	4
		CONTRACT NO. 78B53		
ILLINOIS		FED. AID PROJECT		



SUMMARY OF QUANTITIES

CODE NUMBER	ITEM DESCRIPTION	UNIT	TOTAL QUANTITY	COUNTY:	PERRY	PERRY	PERRY
				ROUTE:	FAP 322	FAP 323	FAP 324
				FUNDING:	80% FEDERAL 20% STATE	90% FEDERAL 10% STATE	80% FEDERAL 10% STATE 10% LOCAL
				LOCATION:	RURAL	RURAL	PARKING LANES
				ROADWAY	SAFETY	ROADWAY	
				0005	0021	0005	
20200600	EXCAVATING AND GRADING EXISTING SHOULDER	UNIT	194		194		
40600290	BITUMINOUS MATERIALS (TACK COAT)	POUND	88,812	61,790	21,723	5,299	
40600370	LONGITUDINAL JOINT SEALANT	FOOT	35,660	35,660			
40600405	MATERIAL TRANSFER DEVICE	TON	14,862	14,862			
40600982	HOT-MIX ASPHALT SURFACE REMOVAL - BUTT JOINT	SQ YD	985	985			
40600990	TEMPORARY RAMP	SQ YD	814	814			
40602970	HOT-MIX ASPHALT BINDER COURSE, IL-9.5FG, N70	TON	6,452	6,452			
40604052	HOT-MIX ASPHALT SURFACE COURSE, IL-9.5, MIX "C", N70	TON	8,385	7,671		714	
40800050	INCIDENTAL HOT-MIX ASPHALT SURFACING	TON	69	69			
42001300	PROTECTIVE COAT	SQ YD	2	2			
42400800	DETECTABLE WARNINGS	SQ FT	8	8			
44000155	HOT-MIX ASPHALT SURFACE REMOVAL, 1 1/2"	SQ YD	104,420	96,569		7,851	
44000159	HOT-MIX ASPHALT SURFACE REMOVAL, 2 1/2"	SQ YD	46,140	46,140			

MODEL: SOQ\_1 [Sheet]  
FILE NAME: c:\pw\work\illinois.gov\_zachary.hughey\1102559\0978853-SHC-SOQ.dgn

SUMMARY OF QUANTITIES - CONT

CODE NUMBER	ITEM DESCRIPTION	UNIT	TOTAL QUANTITY	COUNTY:	PERRY	PERRY	PERRY
				ROUTE:	FAP 322	FAP 323	FAP 324
				FUNDING:	80% FEDERAL 20% STATE	90% FEDERAL 10% STATE	80% FEDERAL 10% STATE 10% LOCAL
				LOCATION:	RURAL	RURAL	PARKING LANES
					ROADWAY 0005	SAFETY 0021	ROADWAY 0005
44000400	GUTTER REMOVAL	FOOT	1,271		1,271		
44000500	COMBINATION CURB AND GUTTER REMOVAL	FOOT	4		4		
44000600	SIDEWALK REMOVAL	SQ FT	25		25		
48102100	AGGREGATE WEDGE SHOULDER, TYPE B	TON	732		732		
48203029	HOT-MIX ASPHALT SHOULDERS, 8"	SQ YD	8,591			8,591	
48203100	HOT-MIX ASPHALT SHOULDERS	TON	2,752		2,752		
60603800	COMBINATION CONCRETE CURB AND GUTTER, TYPE B-6.12	FOOT	4		4		
64200108	SHOULDER RUMBLE STRIPS, 8 INCH	FOOT	59,415			59,415	
67000400	ENGINEER'S FIELD OFFICE, TYPE A	CAL MO	5		5		
67100100	MOBILIZATION	L SUM	1		1		
70100460	TRAFFIC CONTROL AND PROTECTION, STANDARD 701306	L SUM	1		0.5	0.5	
70100500	TRAFFIC CONTROL AND PROTECTION, STANDARD 701326	L SUM	1			1	
70100600	TRAFFIC CONTROL AND PROTECTION, STANDARD 701336	L SUM	1		1		

MODEL: SOQ 2 [Sheet]  
FILE NAME: c:\p\work\pwrtd\illinois.gov\_zachary.hughey@d1102559\0978853-SHC-SOQ.dgn



SUMMARY OF QUANTITIES - CONT

CODE NUMBER	ITEM DESCRIPTION	UNIT	TOTAL QUANTITY	COUNTY:	PERRY	PERRY	PERRY
				ROUTE:	FAP 322	FAP 323	FAP 324
				FUNDING:	80% FEDERAL 20% STATE	90% FEDERAL 10% STATE	80% FEDERAL 10% STATE 10% LOCAL
				LOCATION:	RURAL ROADWAY 0005	RURAL SAFETY 0021	PARKING LANES ROADWAY 0005
70102620	TRAFFIC CONTROL AND PROTECTION, STANDARD 701501	L SUM	1		1		
70102640	TRAFFIC CONTROL AND PROTECTION, STANDARD 701801	L SUM	1		1		
70103815	TRAFFIC CONTROL SURVEILLANCE	CAL DA	5			5	
70107025	CHANGEABLE MESSAGE SIGN	CAL DA	28		28		
70300100	SHORT TERM PAVEMENT MARKING	FOOT	9,439		9,439		
70300150	SHORT TERM PAVEMENT MARKING REMOVAL	SQ FT	3,147		3,147		
70300211	TEMPORARY PAVEMENT MARKING LETTERS AND SYMBOLS - PAINT	SQ FT	124		124		
70300221	TEMPORARY PAVEMENT MARKING - LINE 4"- PAINT	FOOT	71,208		71,208		
70300241	TEMPORARY PAVEMENT MARKING - LINE 6"- PAINT	FOOT	90		90		
70300281	TEMPORARY PAVEMENT MARKING - LINE 24"- PAINT	FOOT	216		216		
* 78000100	THERMOPLASTIC PAVEMENT MARKING - LETTERS AND SYMBOLS	SQ FT	124		124		
* 78000400	THERMOPLASTIC PAVEMENT MARKING - LINE 6"	FOOT	90		90		
* 78000650	THERMOPLASTIC PAVEMENT MARKING - LINE 24"	FOOT	216		216		
* 78001110	PAINT PAVEMENT MARKING - LINE 4"	FOOT	71,208		71,208		

\* SPECIALTY ITEM

REV - MS

MODEL: SQO 3 [Sheet]  
FILE NAME: c:\paw\work\paw\illinois.gov\id1102559\0978B53-Sync-SQO.dgn

	USER NAME = Zachary.Hughey	DESIGNED -	REVISED -	STATE OF ILLINOIS DEPARTMENT OF TRANSPORTATION	SUMMARY OF QUANTITIES CONT.			F.A.P RTE.	SECTION	COUNTY	TOTAL SHEETS	SHEET NO.
		DRAWN -	REVISED -					322	(5,6,7)RS-5,SW-1,SR-1	Perry	32	7
		CHECKED -	REVISED -					CONTRACT NO. 78B53				
	PLOT DATE = 8/6/2025	DATE -	REVISED -		SCALE:	SHEET 3	OF 4	SHEETS	STA.	TO STA.	ILLINOIS   FED. AID PROJECT	

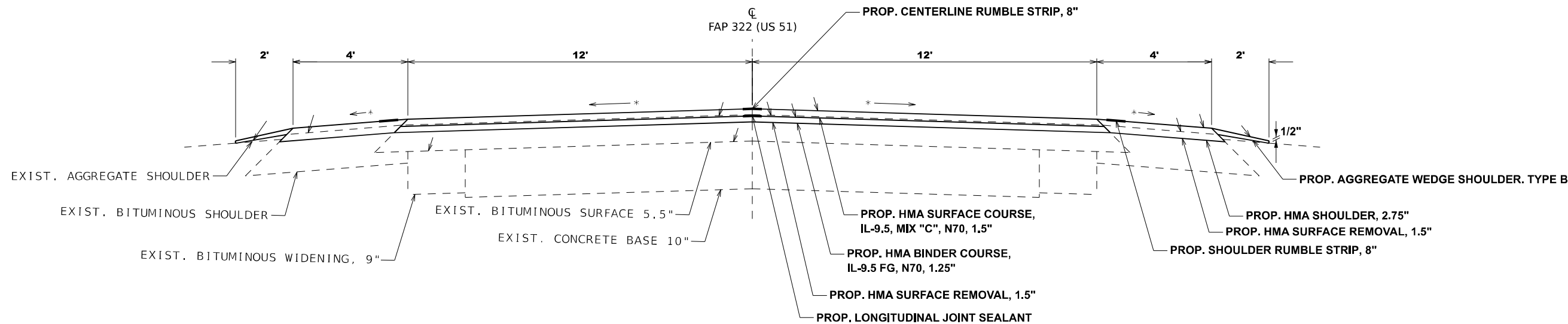
SUMMARY OF QUANTITIES - CONT

CODE NUMBER	ITEM DESCRIPTION	UNIT	TOTAL QUANTITY	COUNTY:	PERRY	PERRY	PERRY
				ROUTE:	FAP 322	FAP 323	FAP 324
				FUNDING:	80% FEDERAL 20% STATE	90% FEDERAL 10% STATE	80% FEDERAL 10% STATE 10% LOCAL
				LOCATION:	RURAL ROADWAY 0005	RURAL SAFETY 0021	PARKING LANES ROADWAY 0005
*	78100100	RAISED REFLECTIVE PAVEMENT MARKER	EACH	427	427		
	78300200	RAISED REFLECTIVE PAVEMENT MARKER REMOVAL	EACH	425	425		
	78300201	PAVEMENT MARKING REMOVAL - GRINDING	SQ FT	24,337	24,337		
	X4240420	PORTLAND CEMENT CONCRETE SIDEWALK 4 INCH (SPECIAL)	SQ FT	25	25		
	X6420112	CENTER LINE - RUMBLE STRIP - 8"	FOOT	7,467		7,467	
	Z0013798	CONSTRUCTION LAYOUT	L SUM	1	1		
	Z0048665	RAILROAD PROTECTIVE LIABILITY INSURANCE	L SUM	1	1		

\* SPECIALTY ITEM

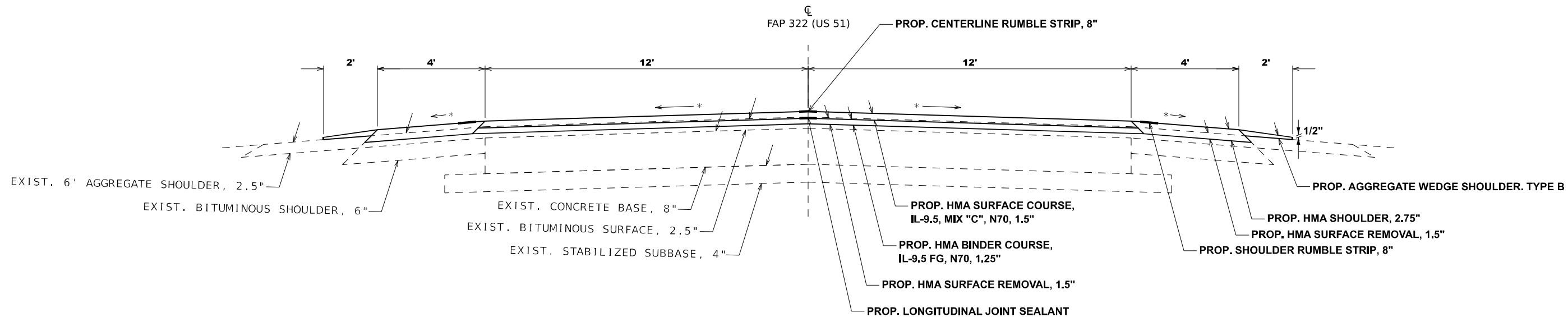
MODEL: SQO 4 [Sheet]  
FILE NAME: c:\paw\work\illinois.gov\zachary.hughey\illinois.gov\d1102559\0978853-SHC-SQO.dgn





TO BE USED:  
STA. 219+37.23 TO STA. 296+02.31  
(SEE START OF PROJECT MAINLINE BUTT JOINT DETAIL)

\*MATCH EXISTING

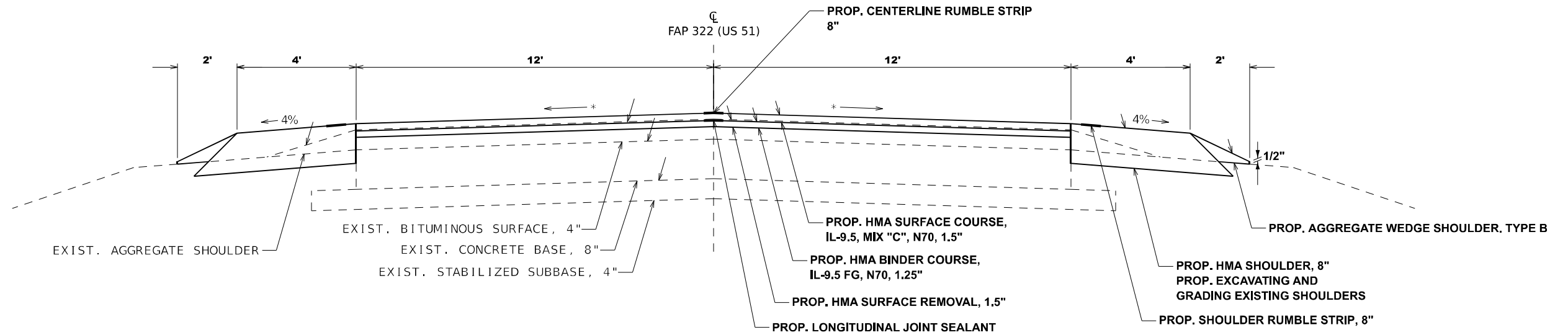


TO BE USED:  
STA. 296+02.31 TO STA. 327+61.97 BK  
STA. 327+60.07 AH TO STA. 367+03.7 BK  
STA. 380+92.90 AH TO STA. 382+51.96  
STA. 527+01.71 TO STA. 544+05.37 BK  
STA. 544+05.87 AH TO STA. 576+88.45 BK  
STA. 584+69.00 AH TO STA. 585+66.32  
(SEE END OF PROJECT MAINLINE BUTT JOINT DETAIL)

STATION EQUATIONS IN  
THIS SECTION:  
STA. 327+61.97 BK = STA. 327+60.07 AH  
STA. 367+03.7 BK = STA. 380+92.90 AH  
STA. 544+05.37 BK = STA. 544+05.87 AH  
STA. 576+88.45 BK = STA. 584+69.00 AH

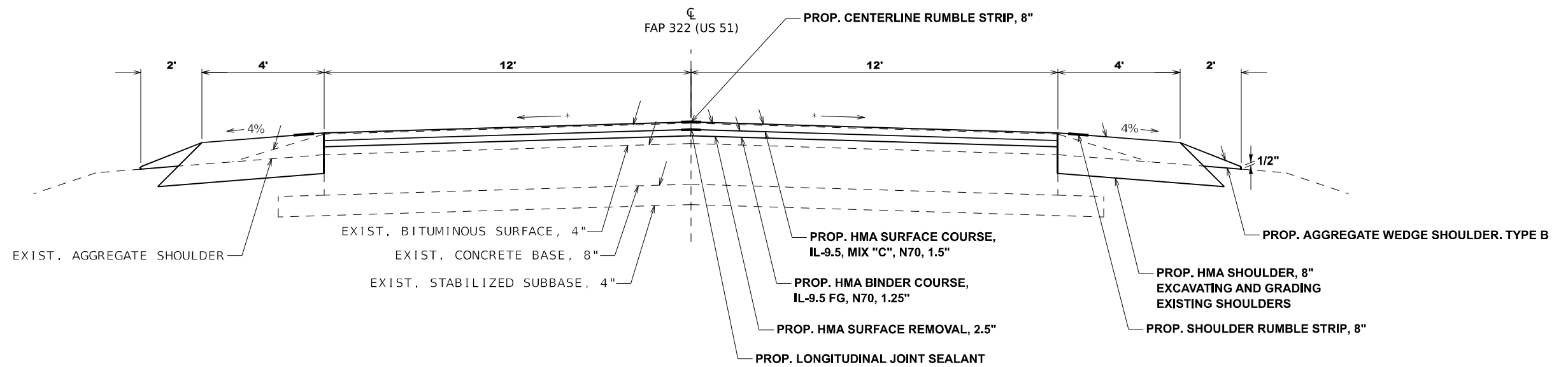
MODEL: Typical-1 [Sheet]  
FILE NAME: c:\p\work\pilot\illinois.gov\_zachary.hughey@d1102559\0978853-SHD-Typicals.dgn

FILE NAME:	USER NAME = Zachary.Hughey	DESIGNED -	REVISED -	STATE OF ILLINOIS DEPARTMENT OF TRANSPORTATION	TYPICALS				F.A.P RTE.	SECTION	COUNTY	TOTAL SHEETS	SHEET NO.
		DRAWN -	REVISED -						322	(5.6,7)RS-5,SW-1,SR-1	Perry	32	9
		CHECKED -	REVISED -		CONTRACT NO. 78B53								
	PLOT DATE = 8/6/2025	DATE -	REVISED -		SCALE:	SHEET 1	OF 6 SHEETS	STA.	TO STA.	ILLINOIS FED. AID PROJECT			



TO BE USED:  
STA. 383+14.66 TO STA. 401+66  
(SEE HMA MILLING TRANSITION DETAIL)

\*MATCH EXISTING



TO BE USED:  
STA. 401+66 TO STA. 401+82.87

STATE OF ILLINOIS  
DEPARTMENT OF TRANSPORTATION

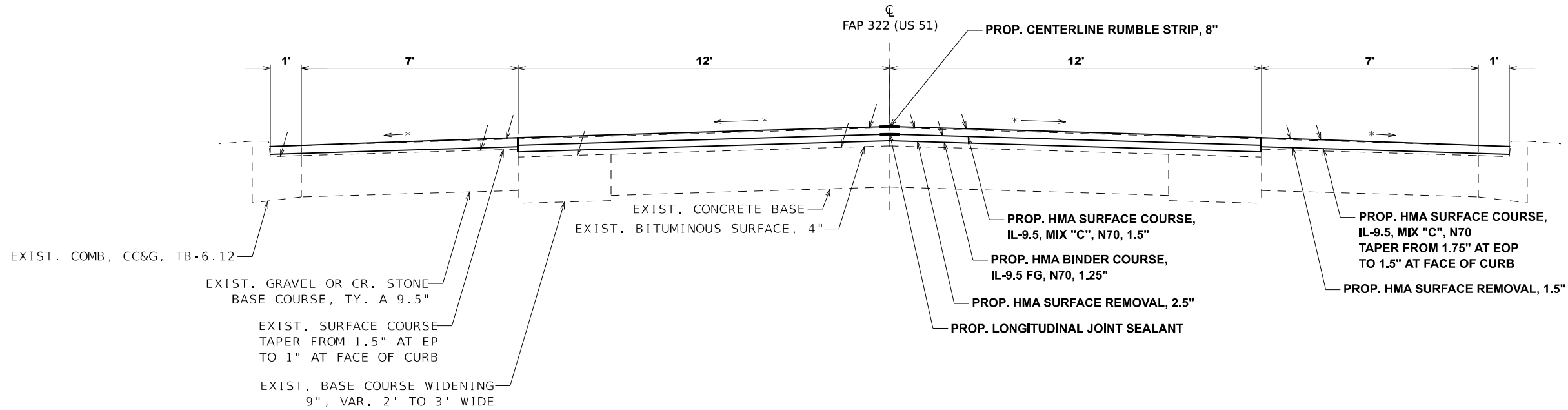
TYPICALS CONT.

SCALE: SHEET 2 OF 6 SHEETS STA. TO STA.

F.A.P RTE.	SECTION	COUNTY	TOTAL SHEETS	SHEET NO.
322	(5,6,7)RS-5.SW-1,SR-1	Perry	32	10
CONTRACT NO. 78B53				
ILLINOIS FED. AID PROJECT				

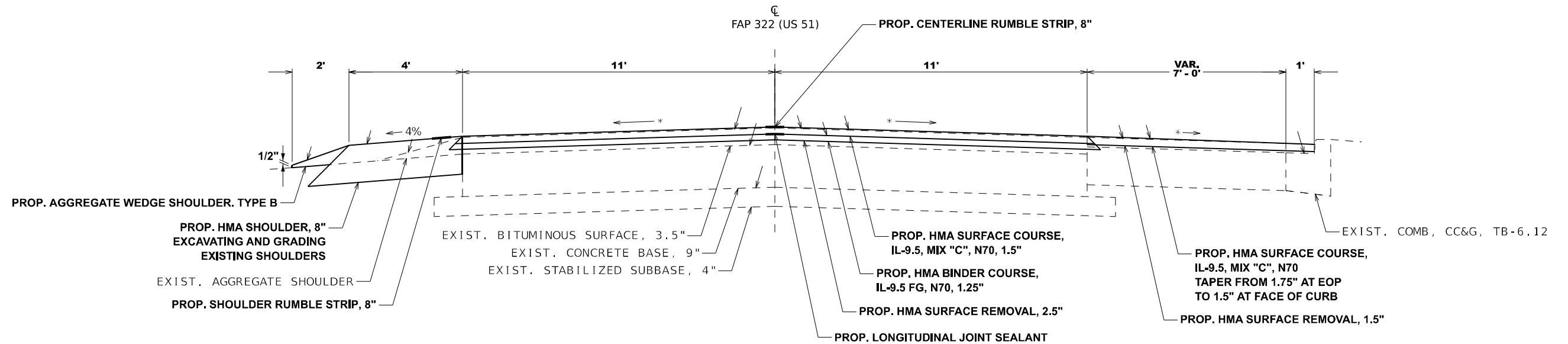
USER NAME = Zachary.Hughey	DESIGNED -	REVISED -
	DRAWN -	REVISED -
	CHECKED -	REVISED -
PLOT DATE = 8/6/2025	DATE -	REVISED -





TO BE USED:  
STA. 401+82.87 TO STA. 445+54.55

\*MATCH EXISTING



TO BE USED:  
STA. 445+54.55 TO STA. 447+05.29

MODEL: Typical-3 [Sheet]  
FILE NAME: c:\p\work\pwork\illinois.gov\_zachary.hughey@d1102559\0978853-SHD-Typicals.dgn

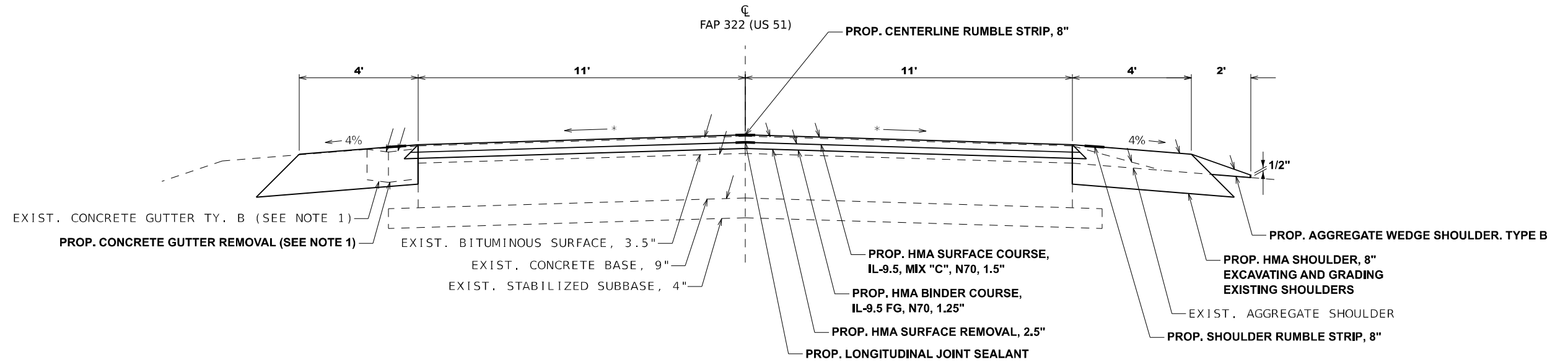
USER NAME = Zachary.Hughey	DESIGNED -	REVISED -
	DRAWN -	REVISED -
	CHECKED -	REVISED -
PLOT DATE = 8/6/2025	DATE -	REVISED -

STATE OF ILLINOIS  
DEPARTMENT OF TRANSPORTATION

TYPICALS CONT.

SCALE: SHEET 3 OF 6 SHEETS STA. TO STA.

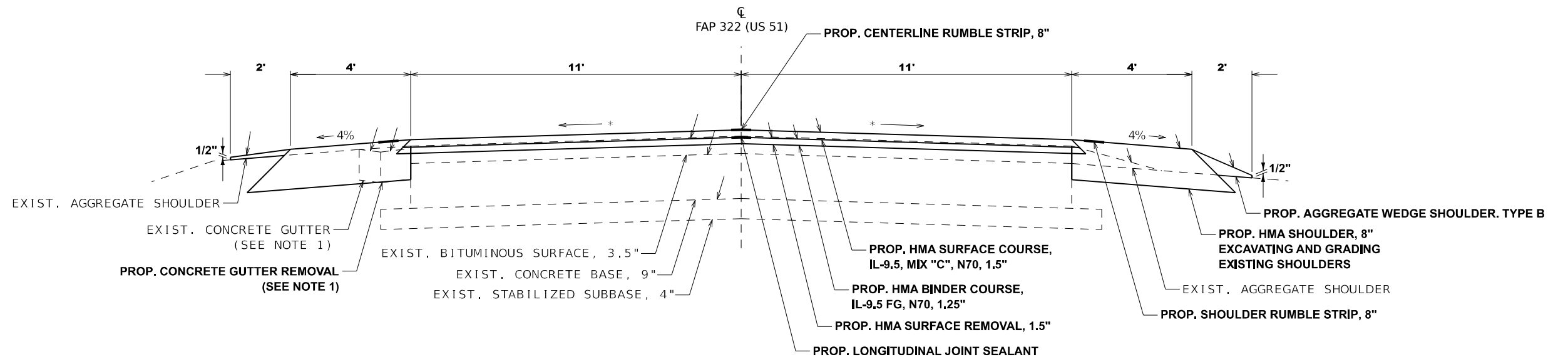
F.A.P. RTE.	SECTION	COUNTY	TOTAL SHEETS	SHEET NO.
322	(5,6,7)RS-5.SW-1,SR-1	Perry	32	11
CONTRACT NO. 78B53				
ILLINOIS FED. AID PROJECT				



TO BE USED:  
STA. 447+05.29 TO STA. 447+49.98

NOTE 1  
LOCATION OF EXIST. CONC. GUTTER TY. B:  
RT. STA. 447+05.29 TO STA. 447+49.98  
RT. STA. 447+49.98 TO STA. 450+48.81  
LT. STA. 454+53.81 TO STA. 463+80.55

\*MATCH EXISTING



STATION EQUATIONS IN  
THIS SECTION:  
STA. 464+36.79 BK = STA. 465+76.55 AH

TO BE USED:  
STA. 447+49.98 TO STA. 464+36.79 BK  
(SEE HMA MILLING TRANSITION DETAIL)

STATE OF ILLINOIS  
DEPARTMENT OF TRANSPORTATION

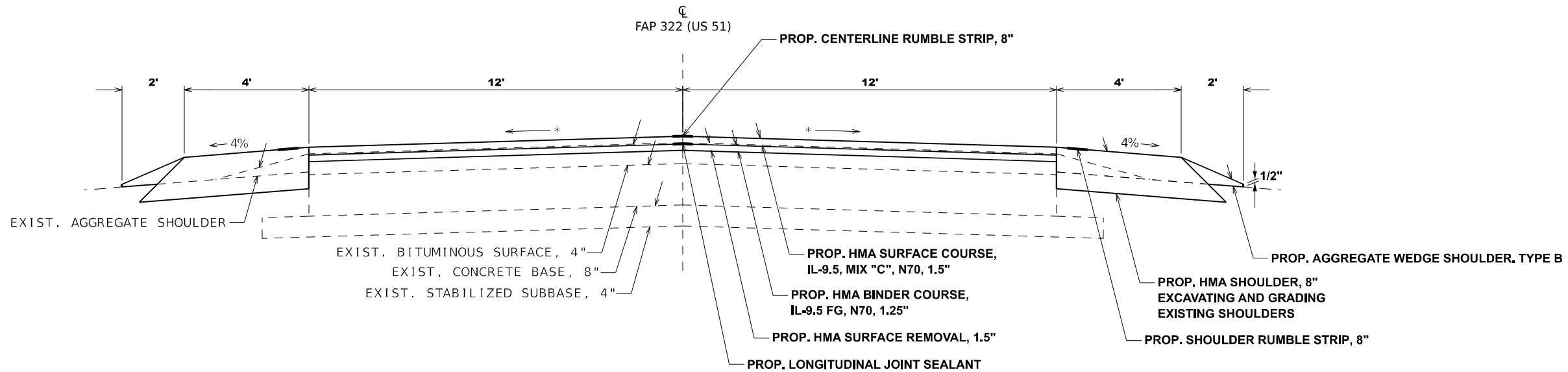
TYPICALS CONT.

SCALE: SHEET 4 OF 6 SHEETS STA. TO STA.

F.A.P. RTE.	SECTION	COUNTY	TOTAL SHEETS	SHEET NO.
322	(5,6,7)RS-5.SW-1,SR-1	Perry	32	12
CONTRACT NO. 78B53				
ILLINOIS FED. AID PROJECT				

USER NAME = Zachary.Hughey	DESIGNED -	REVISED -
	DRAWN -	REVISED -
	CHECKED -	REVISED -
PLOT DATE = 8/6/2025	DATE -	REVISED -

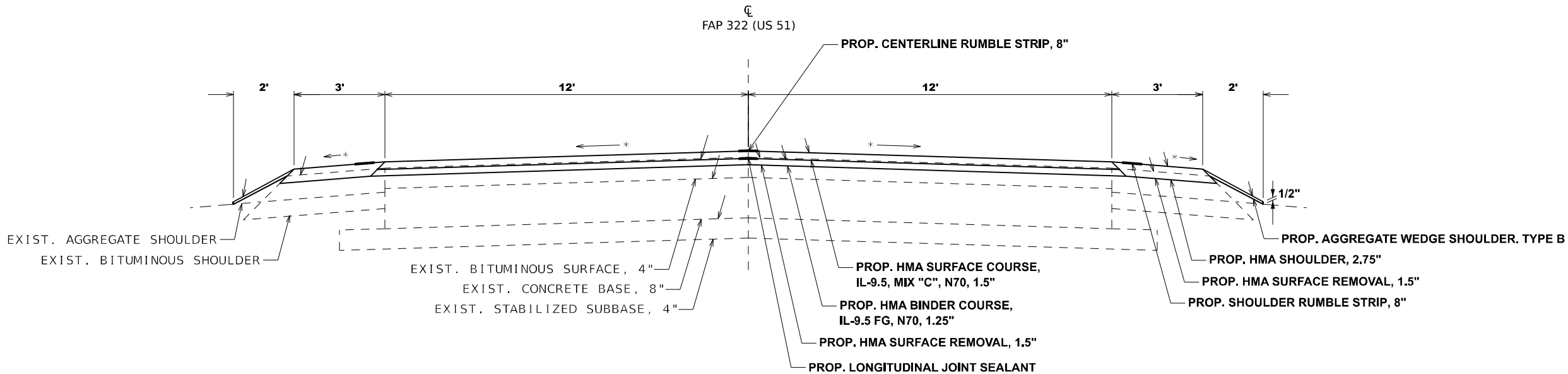




STATION EQUATIONS IN  
THIS SECTION:  
STA. 464+36.79 BK = STA. 465+76.55 AH

TO BE USED:  
STA. 465+76.55 AH TO STA. 466+21.33  
STA. 467+57.8 TO STA. 527+01.71

\*MATCH EXISTING



TO BE USED:  
STA. 466+21.33 TO STA. 466+87.57  
SN 073-2008 OMISSION: STA. 466+87.57 TO STA. 467+07.8  
STA. 467+07.8 TO STA. 467+57.8

MODEL: Typical-5 [Sheet]  
FILE NAME: c:\p\work\illinois.gov\zachary.hughey\102559\0978853-S\TD-Typicals.dgn

PLOT DATE = 8/6/2025	USER NAME = Zachary.Hughey	DESIGNED -	REVISED -
		DRAWN -	REVISED -
		CHECKED -	REVISED -
	DATE -	REVISED -	

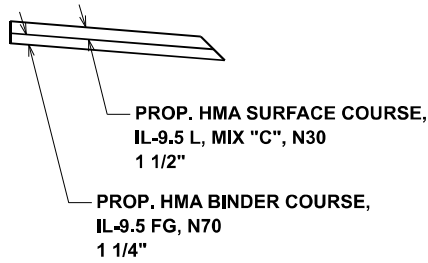
STATE OF ILLINOIS  
DEPARTMENT OF TRANSPORTATION

TYPICALS CONT.

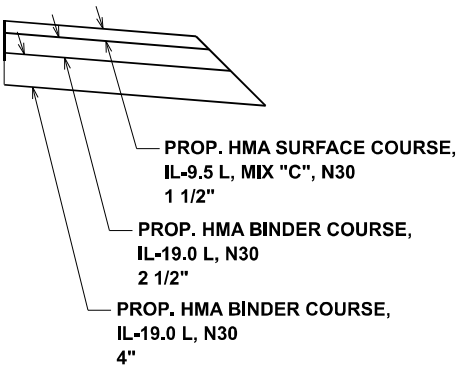
SCALE: SHEET 5 OF 6 SHEETS STA. TO STA.

F.A.P RTE.	SECTION	COUNTY	TOTAL SHEETS	SHEET NO.
322	(5,6,7)RS-5.SW-1,SR-1	Perry	32	13
CONTRACT NO. 78B53				
ILLINOIS FED. AID PROJECT				

LIFT THICKNESS REQUIREMENT DETAIL  
HMA 2 3/4" SHOULDER



LIFT THICKNESS REQUIREMENT DETAIL  
HMA 8" SHOULDER



MODEL: Typical-6 [Sheet]  
FILE NAME: c:\pwworking\illinois.gov\zachary.hughey@illinois.gov\1102559\0978853-SHD-Typicals.dgn

	USER NAME = Zachary.Hughey	DESIGNED -	REVISED -	STATE OF ILLINOIS DEPARTMENT OF TRANSPORTATION	LIFT THICKNESS REQUIREMENT DETAILS			F.A.P RTE.	SECTION	COUNTY	TOTAL SHEETS	SHEET NO.
		DRAWN -	REVISED -					322	(5,6,7)RS-5,SW-1,SR-1	Perry	32	14
		CHECKED -	REVISED -					CONTRACT NO. 78B53				
	PLOT DATE = 8/6/2025	DATE -	REVISED -		SCALE:	SHEET 6	OF 6	SHEETS	STA.	TO STA.	ILLINOIS   FED. AID PROJECT	

US 51 RESURFACING SCHEDULE

LOCATION STATION TO STATION				LENGTH	PAVEMENT WIDTH	HMA SURFACE REMOVAL, 1 1/2"	HMA SURFACE REMOVAL, 2 1/2"	HMA BINDER COURSE, IL- 9.5 FG, N70 1 1/4"	HMA SURFACE COURSE, IL 9.5, MIX "C", N70 1 1/2"	BITUMINOUS MATERIALS (TACK COAT)	LONGITUDINAL JOINT SEALER	TEMPORARY RAMP	REMARKS
				(FOR INFORMATION ONLY)									
				(FOOT)	(FOOT)	(SQ YD)	(SQ YD)	(TON)	(TON)	(POUND)	(FOOT)	(SQ YD)	
US 51													
	219+37.23	TO	296+02.31	7,665	24	20,440		1,453	1,726	13,797	7,665	24	
	296+02.31	TO	327+61.97	3,160	24	8,426		599	711	5,687	3,160		
STATION EQUATION				STA. 327+61.97 BK = STA. 327+60.07 AH									
	327+60.07	TO	367+03.7	3,944	24	10,516		748	888	7,099	3,944		
STATION EQUATION				STA. 367+03.70 BK = STA. 380+92.90 AH									
	380+92.9	TO	382+51.96	159	24	424		30	36	286	159	24	
	382+51.96	TO	383+14.66	RAILROAD OMISSION									
	383+14.66	TO	401+66.	1,851	24	4,937		351	417	3,332	1,851	24	
	401+66.	TO	401+82.87	17	24		45	3	4	30	17		
	401+82.87	TO	445+54.55	4,372	24		11,658	816	979	7,869	4,372		
RT.	445+54.55	TO	447+05.29	151	11		184	13	15	124	151		
LT.	445+54.55	TO	447+05.29	151	11		184	13	15	124	151		
RT.	447+05.29	TO	447+49.98	45	11		55	4	5	37	45		
LT.	447+05.29	TO	447+49.98	45	11		55	4	5	37	45		
RT.	447+49.98	TO	450+48.81	299	11	365	365	26	31	247	299		
LT.	447+49.98	TO	450+48.81	299	11	365	365	26	31	247	299		
	450+48.81	TO	454+53.81	405	22	990	990	70	84	668	405		
RT.	454+53.81	TO	463+80.55	927	11	1,133	1,133	82	96	765	927		
LT.	454+53.81	TO	463+80.55	927	11	1,133	1,133	82	96	765	927		
	463+80.55	TO	464+36.79	56	22	137	137	10	12	93	56		
STATION EQUATION				STA. 464+36.79 BK = STA. 465+76.55 AH									
	465+76.55	TO	466+21.33	45	24	119	119	8	10	81	45		
	466+21.33	TO	466+87.57	66	24	177	177	13	15	119	66	24	
	466+87.57	TO	467+07.8	SN 073-2008 OMISSION									
	467+07.8	TO	467+57.8	50	24	133	133	9	11	90	50	24	
	467+57.8	TO	527+01.71	5,944	24	15,850	15,850	1,127	1,338	10,699	5,944		
	527+01.71	TO	544+05.37	1,704	24	4,543	4,543	323	384	3,067	1,704		
STATION EQUATION				STA. 544+05.37 BK = STA. 544+05.87 AH									
	544+05.87	TO	576+88.45	3,283	24	8,754	8,754	622	739	5,909	3,283		
STATION EQUATION				STA. 576+88.45 BK = STA. 584+69.00 AH									
	584+69.	TO	585+66.32	97	24	260	260	18	22	175	97	24	
TOTAL						78,703	46,140	6,452	7,671	61,347	35,660	147	

MODEL: Schedule-1 (Sheet)  
FILE NAME: c:\pawork\pawork\illinois.gov\_zachary.hughey@illinois.gov\102559\0978853-SWE-Schedules.dgn

PLOT DATE = 8/6/2025	USER NAME = Zachary.Hughey	DESIGNED -	REVISED -	STATE OF ILLINOIS DEPARTMENT OF TRANSPORTATION	RESURFACING SCHEDULE				F.A.P. RTE.	SECTION	COUNTY	TOTAL SHEETS	SHEET NO.
		DRAWN -	REVISED -						322	(5,6,7)RS-5,SW-1,SR-1	Perry	32	15
		CHECKED -	REVISED -		SCALE: SHEET 1 OF 9 SHEETS STA. TO STA.				CONTRACT NO. 78B53				
		DATE -	REVISED -						ILLINOIS FED. AID PROJECT				

MODEL: Schedule-2 (Sheet)  
FILE NAME: c:\paw\_sch\paw\illinois.gov\_zachary.hughey@d102559D978B53-SHE-Schedules.dgn

US 51 PARKING LANE RESURFACING SCHEDULE

LOCATION STATION TO STATION				LENGTH  (FOR INFORMATION ONLY) (FOOT)	PAVEMENT WIDTH (FOOT)	HMA SURFACE REMOVAL, 1 1/2" (SQ YD)	HMA SURFACE COURSE, IL - 9.5, MIX "C", N70 1 1/2" (TON)	BITUMINOUS MATERIALS (TACK COAT) (POUND)	REMARKS
US 51									
	401+82.87	TO	445+54.55	4,372	16	7,772	707	5,246	
RT.	445+54.55	TO	447+05.29	151	VAR.	78	7	53	*
TOTAL						7,851	714	5,299	

\*TAPERED PARKING LANE SURFACE COURSE PAID FOR AS 1.5" DEPTH

	USER NAME = Zachary.Hughey	DESIGNED -	REVISED -	STATE OF ILLINOIS DEPARTMENT OF TRANSPORTATION	PARKING LANE RESURFACING SCHEDULE			F.A.P RTE.	SECTION	COUNTY	TOTAL SHEETS	SHEET NO.
		DRAWN -	REVISED -					322	(5,6,7)RS-5.SW-1,SR-1	Perry	32	16
		CHECKED -	REVISED -		SCALE: SHEET 2 OF 9 SHEETS STA. TO STA.			CONTRACT NO. 78B53				
	PLOT DATE = 8/6/2025	DATE -	REVISED -					ILLINOIS FED. AID PROJECT				



US 51 SHOULDER SCHEDULE

LOCATION STATION TO STATION				LENGTH	HMA SHOULDER WIDTH	AGGREGATE SHOULDER WIDTH	HMA SURFACE REMOVAL 1 1/2"	HMA SHOULDER 2 3/4"	HMA SHOULDER 8"	AGGREGATE WEDGE SHOULDER, TYPE B	SHOULDER RUMBLE STRIPS, 8"	CENTER LINE RUMBLE STRIP, 8"	EXCAVATING AND GRADING EXISTING SHOULDER	GUTTER REMOVAL	BITUMINOUS MATERIALS (TACK COAT)	REMARKS
				(FOR INFORMATION ONLY)												
				(FOOT)	(FOOT)	(FOOT)	(SQ YD)	(TON)	(SQ YD)	(TON)	(FOOT)	(FOOT)	(UNIT)	(FOOT)	(POUND)	
	219+37.23	TO	296+02.31	7,665	4	2	6,813	1,049		170	15,330	1,916			4,599	
	296+02.31	TO	327+61.97	3,160	4	2	2,809	433		70	6,319	790			1,896	
STATION EQUATION				STA. 327+61.97 BK = STA. 327+60.07 AH												
	327+60.07	TO	367+03.7	3,944	4	2	3,505	540		87	7,887	986			2,366	
STATION EQUATION				STA. 367+03.70 BK = STA. 380+92.90 AH												
	380+92.9	TO	382+51.96	159	4	2	141	22		4		40			95	
	382+51.96	TO	383+14.66	RAILROAD OMISSION												
	383+14.66	TO	401+66.	1,851	4	2			1,646	111	3,703	463	37		1,851	
	401+66.	TO	401+82.87	17	4	2			15	1	34	4	1		17	
	401+82.87	TO	445+54.55	4,372												
RT.	445+54.55	TO	447+05.29	151							151	38				
LT.	445+54.55	TO	447+05.29	151	4	2			67	2	151				75	
RT.	447+05.29	TO	447+49.98	45	4	2			20	1	45	11	1	45	22	
LT.	447+05.29	TO	447+49.98	45	4	2			20	1	45		1		22	
RT.	447+49.98	TO	450+48.81	299	4	2			133	3	299	75	3	299	149	
LT.	447+49.98	TO	450+48.81	299	4	2			133	3	299		3		149	
	450+48.81	TO	454+53.81	405	4	2			360	9	810	101	8		405	
RT.	454+53.81	TO	463+80.55	927	4	2			412	10	927	232	9		463	
LT.	454+53.81	TO	463+80.55	927	4	2			412	10	927		9	927	463	
	463+80.55	TO	464+36.79	56	4	2			50	1	112	14	1		56	
STATION EQUATION				STA. 464+36.79 BK = STA. 465+76.55 AH												
	465+76.55	TO	466+21.33	45	4	2			40	1	90	11	1		45	
	466+21.33	TO	466+87.57	66	3	2	44	7		1	132	17			30	
	466+87.57	TO	467+07.8	SN 073-2008 OMISSION												
	467+07.8	TO	467+57.8	50	3	2	33	5		1	100	13			23	
	467+57.8	TO	527+01.71	5,944	4	2			5,283	132	11,888	1,486	119		5,944	
	527+01.71	TO	544+05.37	1,704	4	2	1,514	233		38	3,407	426			1,022	
STATION EQUATION				STA. 544+05.37 BK = STA. 544+05.87 AH												
	544+05.87	TO	576+88.45	3,283	4	2	2,918	449		73	6,565	821			1,970	
STATION EQUATION				STA. 576+88.45 BK = STA. 584+69.00 AH												
	584+69.	TO	585+66.32	97	4	2	87	13		2	195	24			58	
TOTAL							17,866	2,752	8,591	732	59,415	7,467	194	1,271	21,723	

MODEL: Schedule-3 (Sheet)  
FILE NAME: c:\paw\work\illinois\gov\zachary.hughey\1102559\0978853-SHE-Schedules.dgn

	USER NAME = Zachary.Hughey		DESIGNED -	REVISED -	STATE OF ILLINOIS DEPARTMENT OF TRANSPORTATION	SHOULDER SCHEDULE			F.A.P. RTE.	SECTION	COUNTY	TOTAL SHEETS	SHEET NO.
			DRAWN -	REVISED -					322	(5,6,7)RS-5,SW-1,SR-1	Perry	32	17
			CHECKED -	REVISED -					CONTRACT NO. 78B53				
	PLOT DATE = 8/6/2025		DATE -	REVISED -		SCALE:	SHEET 3	OF 9	SHEETS	STA.	TO STA.	ILLINOIS   FED. AID PROJECT	

US 51 ENTRANCE AND SIDEROAD SCHEDULE

LOCATION					EXISTING SURFACE TYPE	PROPOSED SURFACE TYPE	PROPOSED AREA	INCIDENTAL HMA SURFACING	BITUMINOUS MATERIAL (TACK COAT)	HMA SURFACE REMOVAL BUTT JOINT	TEMPORARY RAMP	REMARKS
SIDE	STATIONS			ENTRANCE			(SQ FT)	(TONS)	(POUND)	(SQ YD)	(SQ YD)	
RT	220+34.02	TO	220+65.93	PE	AGGREGATE	AGGREGATE						
LT	220+53.15	TO	220+70.94	FE	AGGREGATE	AGGREGATE						
LT	223+79.33	TO	224+04.27	PE	AGGREGATE	AGGREGATE						
LT	229+10.72	TO	229+44.09	PE	AGGREGATE	AGGREGATE						
RT	233+83.08	TO	234+14.56	FE	BITUMINOUS	BITUMINOUS	106	1	5	12		
LT	233+76.64	TO	234+14.91	PE	AGGREGATE	AGGREGATE						
LT	246+70.16	TO	246+93.9	FE	AGGREGATE	AGGREGATE						
RT	247+29.06	TO	247+56.93	FE	AGGREGATE	AGGREGATE						
RT	253+88.78	TO	254+36.46	CE	AGGREGATE	AGGREGATE						
LT	255+36.34	TO	255+64.41	PE	AGGREGATE	AGGREGATE						
LT	259+10.74	TO	259+37.88	PE	BITUMINOUS	BITUMINOUS	92	1	5	10		
RT	259+96.82	TO	260+19.72	PE	AGGREGATE	AGGREGATE						
RT	260+29.55	TO	260+73.68	SR	BITUMINOUS	BITUMINOUS	465	4	23	52	10	PINTAIL ROAD
LT	260+36.56	TO	260+82.92	SR	BITUMINOUS	BITUMINOUS	500	4	25	56	10	PINTAIL ROAD
LT	263+78.39	TO	264+04.22	PE	AGGREGATE	AGGREGATE						
LT	266+88.7	TO	267+12.15	FE	AGGREGATE	AGGREGATE						
LT	273+98.32	TO	274+39.52	PE	AGGREGATE	AGGREGATE						
LT	280+94.41	TO	281+21.51	CE	AGGREGATE	AGGREGATE						
LT	289+47.93	TO	289+88.16	PE	AGGREGATE	AGGREGATE						
RT	292+60.75	TO	292+89.06	FE	AGGREGATE	AGGREGATE						
RT	293+46.06	TO	293+72.36	PE	AGGREGATE	AGGREGATE						
RT	299+39.57	TO	299+63.33	FE	AGGREGATE	AGGREGATE						
RT	300+42.6	TO	300+86.19	PE	AGGREGATE	AGGREGATE						
LT	314+55.38	TO	315+28.22	SR	OIL AND CHIP	BITUMINOUS	879	7	44	98	16	BITUMINOUS APRON
RT	314+92.11	TO	315+60.24	SR	BITUMINOUS	BITUMINOUS	801	6	40	89	15	Kimzey Road
RT	344+48.46	TO	344+84.34	PE	BITUMINOUS	BITUMINOUS	97	1	5	11		
RT	354+90.18	TO	355+66.76	SR	BITUMINOUS	BITUMINOUS	916	7	46	102	17	STARLING ROAD
RT	356+96.95	TO	357+31.65	PE	AGGREGATE	AGGREGATE						
LT	381+80.26	TO	382+55.08	SR	AGGREGATE	BITUMINOUS	834	6	42	93	17	BLUEBIRD ROAD; BITUMINOUS APRON
RT	382+10.68	TO	382+72.15	SR	BITUMINOUS	BITUMINOUS	707	5	35	79	14	BLUEBIRD ROAD
RT	383+40.87	TO	383+70.87	FE	AGGREGATE	AGGREGATE						
RT	384+20.49	TO	384+44.12	FE	BITUMINOUS	BITUMINOUS	76	1	4	8		
RT	386+06.18	TO	386+28.76	PE	AGGREGATE	AGGREGATE						
LT	392+12.9	TO	392+31.55	PE	AGGREGATE	AGGREGATE						
RT	392+55.62	TO	392+89.07	PE	BITUMINOUS	BITUMINOUS	105	1	5	12		
LT	394+01.31	TO	394+20.56	PE	AGGREGATE	AGGREGATE						
LT	397+16.69	TO	397+42.02	PE	AGGREGATE	AGGREGATE						
LT	399+37.2	TO	399+65.56	CE	AGGREGATE	AGGREGATE						
RT	400+32.13	TO	400+56.79	PE	BITUMINOUS	BITUMINOUS	76	1	4	8		
RT	401+89.44	TO	402+23.96	SR	OIL AND CHIP	N/A					8	INLAY; WHITE STREET
LT	402+13.45	TO	402+27.66	PE	PCC	N/A					3	INLAY
RT	402+86.58	TO	403+11.51	PE	AGGREGATE	N/A					6	INLAY
RT	404+14.59	TO	404+56.56	SR	OIL AND CHIP	N/A					9	INLAY; CONDIT STREET
SUBTOTAL							5,654	44	283	629	125	

MODEL: Schedule-4 (Sheet)  
FILE NAME: c:\paw\_work\paw\illinois.gov\1102559\0978B53-SHE-Schedules.dgn

PLOT DATE = 8/6/2025	USER NAME = Zachary.Hughey	DESIGNED -	REVISED -	STATE OF ILLINOIS DEPARTMENT OF TRANSPORTATION	ENTRANCE AND SIDEROAD SCHEDULE				F.A.P. RTE.	SECTION	COUNTY	TOTAL SHEETS	SHEET NO.
		DRAWN -	REVISED -						322	(5,6,7)RS-5,SW-1,SR-1	Perry	32	18
		CHECKED -	REVISED -						CONTRACT NO. 78B53				
		DATE -	REVISED -		SCALE:	SHEET 4	OF 9	SHEETS	STA.	TO STA.	ILLINOIS   FED. AID PROJECT		



US 51 ENTRANCE AND SIDEROAD SCHEDULE CONT.

LOCATION					EXISTING SURFACE TYPE	PROPOSED SURFACE TYPE	PROPOSED AREA	INCIDENTAL HMA SURFACING	BITUMINOUS MATERIAL (TACK COAT)	HMA SURFACE REMOVAL BUTT JOINT	TEMPORARY RAMP	REMARKS
SIDE	STATIONS			ENTRANCE			(SQ FT)	(TONS)	(POUND)	(SQ YD)	(SQ YD)	
RT	406+60.34	TO	406+99.34	SR	BITUMINOUS	N/A					9	INLAY; BROADWAY STREET
LT	406+61.02	TO	406+98.56	PE	AGGREGATE	N/A					8	INLAY
RT	407+67.73	TO	407+91.23	PE	AGGREGATE	N/A					5	INLAY
LT	407+94.09	TO	408+04.95	PE	PCC	N/A					2	INLAY
RT	408+12.12	TO	408+26.01	PE	AGGREGATE	N/A					3	INLAY
RT	409+20.24	TO	409+51.82	SR	BITUMINOUS	N/A					7	INLAY; VINE STREET
LT	409+20.78	TO	409+55.43	PE	AGGREGATE	N/A					8	INLAY
RT	410+53.32	TO	410+61.21	PE	AGGREGATE	N/A					2	INLAY
RT	410+69.71	TO	410+83.71	PE	PCC	N/A					3	INLAY
LT	410+54.98	TO	411+09.89	CE	PCC	N/A					12	INLAY
RT	412+18.58	TO	412+30.59	FE	PCC	N/A					3	INLAY
RT	412+88.35	TO	413+27.14	SR	BITUMINOUS	N/A					9	INLAY; 3RD SOUTH STREET
LT	412+79.37	TO	413+14.16	SR	BITUMINOUS	N/A					8	INLAY; WOODCOCK ROAD
LT	413+40.2	TO	413+68.54	PE	BITUMINOUS	N/A					6	INLAY
LT	413+78.51	TO	414+07.54	PE	BITUMINOUS	N/A					6	INLAY
LT	414+50.51	TO	414+79.74	CE	AGGREGATE	N/A					6	INLAY
RT	416+03.57	TO	416+18.6	PE	BITUMINOUS	N/A					3	INLAY
LT	415+98.69	TO	416+22.93	CE	AGGREGATE	N/A					5	INLAY
LT	416+59.02	TO	416+93.21	FE	PCC	N/A					8	INLAY
RT	417+07.44	TO	417+22.07	FE	PCC	N/A					3	INLAY
LT	417+08.99	TO	417+46.04	FE	PCC	N/A					8	INLAY
LT	417+83.54	TO	418+36.6	CE	PCC	N/A					12	INLAY
RT	418+16.1	TO	418+30.36	FE	PCC	N/A					3	INLAY
RT	418+61.08	TO	418+75.73	PE	PCC	N/A					3	INLAY
LT	419+60.95	TO	420+07.14	SR	BITUMINOUS	N/A					10	INLAY; 2ND SOUTH STREET
RT	419+61.91	TO	420+04.44	SR	BITUMINOUS	N/A					9	INLAY; 2ND SOUTH STREET
LT	420+48.73	TO	420+83.29	CE	PCC	N/A					8	INLAY
RT	420+70.68	TO	420+85.9	PE	PCC	N/A					3	INLAY
LT	421+55.76	TO	421+69.48	PE	PCC	N/A					3	INLAY
RT	422+06.83	TO	422+19.14	PE	PCC	N/A					3	INLAY
LT	422+53.75	TO	422+67.56	PE	PCC	N/A					3	INLAY
LT	422+78.46	TO	422+91.54	CE	PCC	N/A					3	INLAY
RT	423+00.55	TO	423+14.3	PE	PCC	N/A					3	INLAY
LT	423+43.78	TO	423+63.35	CE	PCC	N/A					4	INLAY
RT	423+60.07	TO	423+72.44	PE	PCC	N/A					3	INLAY
LT	424+32.52	TO	424+77.24	SR	BITUMINOUS	N/A					10	INLAY; 1ST SOUTH STREET
RT	424+34.81	TO	424+78.34	SR	BITUMINOUS	N/A					10	INLAY; 1ST SOUTH STREET
RT	425+97.74	TO	426+10.32	CE	PCC	N/A					3	INLAY
LT	426+17.45	TO	426+32.69	PE	PCC	N/A					3	INLAY
RT	426+62.73	TO	426+76.55	CE	PCC	N/A					3	INLAY
LT	427+28.78	TO	427+43.12	PE	PCC	N/A					3	INLAY
RT	427+86.55	TO	427+99.91	PE	PCC	N/A					3	INLAY
LT	427+98.51	TO	428+09.62	FE	PCC	N/A					2	INLAY
SUBTOTAL											235	

MODEL: Schedule-5 (Sheet)  
FILE NAME: c:\paw\_sch\pawid\illinois.gov\_zachary.hughey@illinois.gov\_d1102559\0978B53-SHE-Schedules.dgn

USER NAME = Zachary.Hughey	DESIGNED -	REVISED -	STATE OF ILLINOIS DEPARTMENT OF TRANSPORTATION	ENTRANCE AND SIDEROAD SCHEDULE CONT.			F.A.P RTE.	SECTION	COUNTY	TOTAL SHEETS	SHEET NO.
	DRAWN -	REVISED -					322	(5,6,7)RS-5.SW-1.SR-1	Perry	32	19
	CHECKED -	REVISED -		SCALE: SHEET 5 OF 9 SHEETS STA. TO STA.			CONTRACT NO. 78B53				
	PLOT DATE = 8/6/2025	DATE -	REVISED -				ILLINOIS FED. AID PROJECT				

MODEL: Schedule-6 [Sheet]  
FILE NAME: c:\pw work\pwidotillinois.gov zachary.hughey@illinois.gov\d1102559\D978B53-ShIE-Schedules.dgn

USER NAME = Zachary.Hughey	DESIGNED -	REVISED -	STATE OF ILLINOIS DEPARTMENT OF TRANSPORTATION	ENTRANCE AND SIDEROAD SCHEDULE CONT.				F.A.P RTE.	SECTION	COUNTY	TOTAL SHEETS	SHEET NO.
	DRAWN -	REVISED -						322	(5,6,7)RS-5,SW-1,SR-1	Perry	32	20
	CHECKED -	REVISED -		CONTRACT NO. 78B53								
PLOT DATE = 8/6/2025	DATE -	REVISED -										
				SCALE:	SHEET 6	OF 9	SHEETS	STA.	TO STA.		ILLINOIS FED. AID PROJECT	



US 51 ENTRANCE AND SIDEROAD SCHEDULE CONT.

LOCATION					EXISTING SURFACE TYPE	PROPOSED SURFACE TYPE	PROPOSED AREA	INCIDENTAL HMA SURFACING	BITUMINOUS MATERIAL (TACK COAT)	HMA SURFACE REMOVAL BUTT JOINT	TEMPORARY RAMP	REMARKS
SIDE	STATIONS			ENTRANCE			(SQ FT)	(TONS)	(POLIND)	(SQ YD)	(SQ YD)	
LT	447+18.39	TO	447+37.05	PE	AGGREGATE	N/A					4	INLAY
LT	448+18.28	TO	448+39.53	PE	AGGREGATE	AGGREGATE						
RT	448+33.23	TO	448+57.46	PE	AGGREGATE	AGGREGATE						
LT	449+50.13	TO	449+74.43	PE	AGGREGATE	AGGREGATE						
RT	449+74.37	TO	449+92.38	PE	AGGREGATE	AGGREGATE						
LT	451+83.31	TO	452+16.1	SR	BITUMINOUS	BITUMINOUS	391	3	20	43	7	WAVERLY ROAD
LT	455+09.65	TO	455+33.91	FE	AGGREGATE	AGGREGATE						
RT	460+06.07	TO	460+40.93	CE	AGGREGATE	AGGREGATE						
LT	460+10.62	TO	460+34.15	PE	AGGREGATE	AGGREGATE						
LT	462+61.84	TO	462+91.35	PE	AGGREGATE	AGGREGATE						
LT	464+28.99	TO	465+94.34	PE	AGGREGATE	AGGREGATE						
RT	466+15.21	TO	466+42.58	PE	AGGREGATE	BITUMINOUS	84	1	4	9		BITUMINOUS APRON
RT	467+74.03	TO	468+13.57	PE	AGGREGATE	AGGREGATE						
LT	468+45.43	TO	469+09.75	SR	BITUMINOUS	BITUMINOUS	714	6	36	79	14	SHAMROCK ROAD
LT	470+48.47	TO	470+71.75	PE	AGGREGATE	AGGREGATE						
RT	473+98.58	TO	474+24.14	PE	AGGREGATE	AGGREGATE						
LT	476+15.44	TO	476+59.76	PE	AGGREGATE	AGGREGATE						
RT	477+00.46	TO	477+43.75	PE	BITUMINOUS	BITUMINOUS	132	1	7	15		
RT	477+88.74	TO	478+20.49	PE	BITUMINOUS	BITUMINOUS	92	1	5	10		
LT	479+20.58	TO	479+46.6	FE	AGGREGATE	AGGREGATE						
RT	482+77.86	TO	483+05.24	FE	AGGREGATE	AGGREGATE						
LT	483+79.56	TO	484+10.35	FE	AGGREGATE	AGGREGATE						
RT	486+85.49	TO	487+17.41	PE	AGGREGATE	AGGREGATE						
RT	492+93.7	TO	493+20.5	FE	AGGREGATE	AGGREGATE						
RT	494+88.72	TO	495+31.46	PE	AGGREGATE	AGGREGATE						
LT	495+07.68	TO	495+40.78	FE	AGGREGATE	AGGREGATE						
RT	496+39.65	TO	496+85.72	PE	AGGREGATE	AGGREGATE						
LT	498+96.92	TO	499+46.98	CE	AGGREGATE	AGGREGATE						
LT	499+09.53	TO	499+48.09	PE	AGGREGATE	AGGREGATE						
RT	499+56.49	TO	499+97.29	PE	AGGREGATE	AGGREGATE						
RT	503+87.94	TO	504+12.49	FE	AGGREGATE	AGGREGATE						
LT	509+50.41	TO	509+74.8	FE	AGGREGATE	AGGREGATE						
RT	509+48.35	TO	509+74.47	FE	AGGREGATE	AGGREGATE						
RT	515+68.13	TO	516+01.56	FE	AGGREGATE	AGGREGATE						
LT	515+82.49	TO	516+15.68	FE	AGGREGATE	AGGREGATE						
LT	526+73.04	TO	526+94.49	FE	AGGREGATE	AGGREGATE						
LT	533+48.24	TO	533+93.66	PE	BITUMINOUS	BITUMINOUS	140	1	7	16		BITUMINOUS APRON
LT	538+42.19	TO	538+68.95	PE	AGGREGATE	AGGREGATE						
RT	550+32.31	TO	551+06.21	SR	BITUMINOUS	BITUMINOUS	871	7	44	97	16	CORGAN ROAD
RT	550+82.83	TO	551+50.55	SR	BITUMINOUS	BITUMINOUS	771	6	39	86	15	CORGAN ROAD
RT	571+53.89	TO	571+99.76	PE	AGGREGATE	BITUMINOUS						
RT	575+25.22	TO	575+87.25	PE	AGGREGATE	BITUMINOUS						
SUB TOTAL							3196	25	160	356	58	
TOTAL							8,850	69	443	985	667	

MODEL: Schedule-7 (Sheet)  
FILE NAME: c:\paw\_work\paw\illinois.gov\1102559\0978853-SHE-Schedules.dgn

	USER NAME = Zachary.Hughey	DESIGNED -	REVISED -	STATE OF ILLINOIS DEPARTMENT OF TRANSPORTATION	ENTRANCE AND SIDEROAD SCHEDULE CONT.				F.A.P. RTE.	SECTION	COUNTY	TOTAL SHEETS	SHEET NO.
		DRAWN -	REVISED -						322	(5,6,7)RS-5,SW-1,SR-1	Perry	32	21
		CHECKED -	REVISED -		SCALE: SHEET 7 OF 9 SHEETS STA. TO STA.				CONTRACT NO. 78B53				
	PLOT DATE = 8/6/2025	DATE -	REVISED -						ILLINOIS FED. AID PROJECT				

ADA RAMP SCHEDULE

STATIONING			LOCATION	SIDEWALK REMOVAL	PORTLAND CEMENT CONCRETE SIDEWALK 4 INCH (SPECIAL)	COMBINATION CONCRETE CURB AND GUTTER REMOVAL	COMBINATION CURB AND GUTTER, TB-6.12	PROTECTIVE COAT	DETECTABLE WARNINGS	COMMENTS
				(SQ FT)	(SQ FT)	(FOOT)	(FOOT)	(SQ YD)	(SQ FT)	
			3RD SOUTH STREET							
412+77.63	TO	412+81.81	SE	25	25	4	4	1	8	
TOTAL				25	25	4	4	2	8	

MODEL: Schedule-5 [Sheet]  
FILE NAME: c:\pawork\pawork\illinois.gov\zachary.hughey@illinois.gov\d1102559\0978B53-SHE-Schedules.dgn

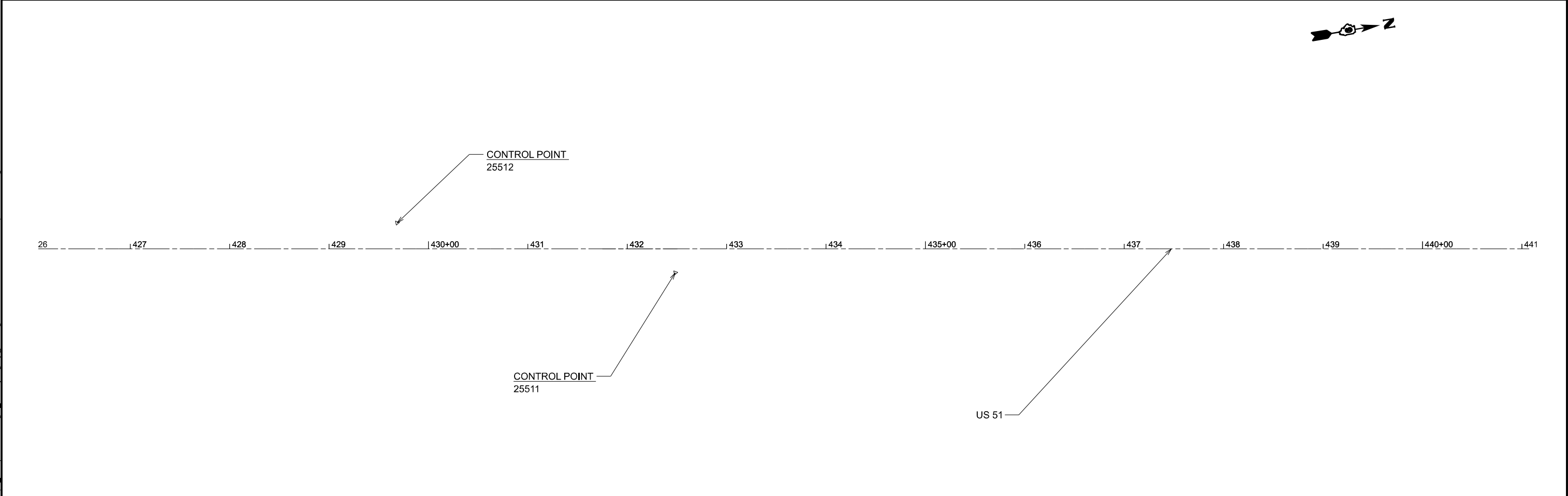
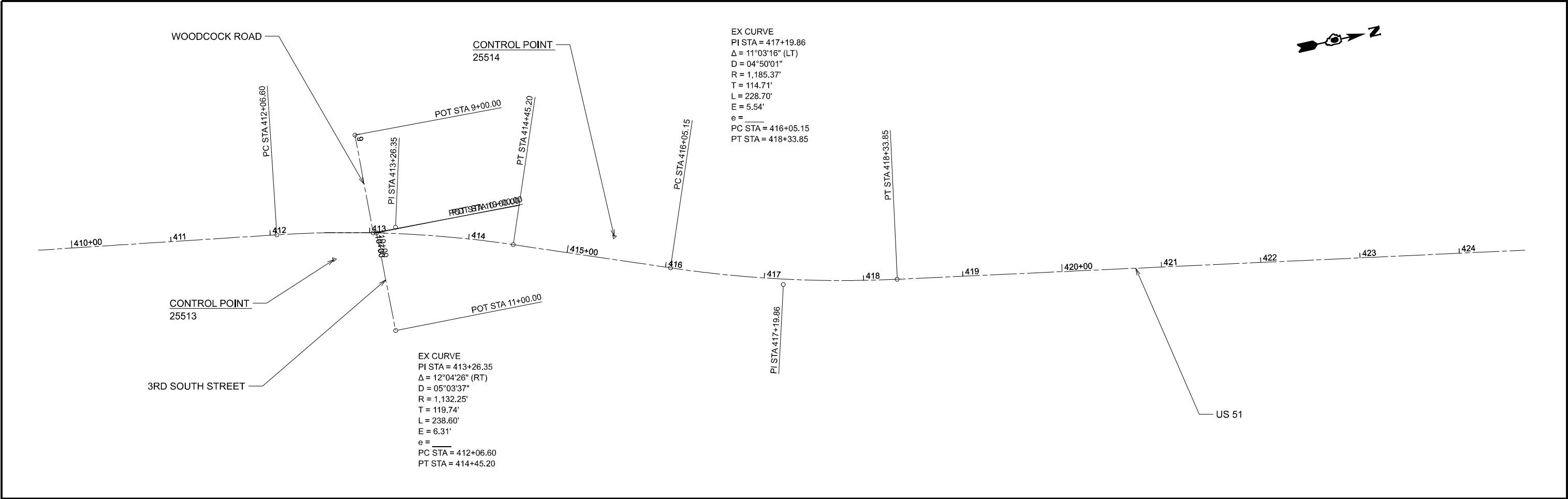
US 51 PAVEMENT MARKING SCHEDULE

LOCATION STATION TO STATION			PAINT PAVEMENT MARKING			THERMOPLASTIC PAVEMENT MARKING			RPM'S		REMARKS
			LINE - 4"			LINE - 6"	LINE - 24"	LETTERS AND SYMBOLS	2-WAY AMBER	2-WAY	
			YELLOW SOLID	YELLOW SKIP DASH	WHITE SOLID	WHITE SOLID	WHITE SOLID	WHITE SOLID	REMOVAL	AMBER	
US 51			(FOOT)	(FOOT)	(FOOT)	(FOOT)	(FOOT)	(SQ FT)	(EACH)	(EACH)	
219+37.23	TO	220+00.52	127		127				2	1	NO PASSING
220+00.52	TO	223+47.57	347	87	694				4	4	RIGHT PASSING
223+47.57	TO	260+51.87		926	7,409				47	46	
260+51.87							9				PINTAIL ROAD LEFT STOP BAR
260+51.87	TO	260+62.61		3	21						
260+62.61							11				PINTAIL ROAD RIGHT STOP BAR
260+62.61	TO	314+74.43		1,353	10,824				68	68	
314+74.43							16				PIGEON ROAD LEFT STOP BAR
314+74.43	TO	315+28.78		14	109						
315+28.78							28				KIMZEY ROAD RIGHT STOP BAR
315+28.78	TO	327+61.97		308	2,466				16	15	
STATION EQUATION			STA. 327+61.97 BK = STA. 327+60.07 AH								
327+60.07	TO	355+44.42		696	5,569				34	35	
355+44.42							20				STARLING ROAD RIGHT STOP BAR
355+44.42	TO	365+30.21		246	1,972				12	12	
365+30.21	TO	365+53.34	23	6	46						LEFT PASSING
365+53.34							12				RAILROAD STOP BAR
365+53.34	TO	365+78.34	25	6	50				1	1	LEFT PASSING
365+78.34								62			RAILROAD LETTERS AND SYMBOLS
365+78.34	TO	366+03.34	25	6	50						LEFT PASSING
366+03.34							12				RAILROAD STOP BAR
366+03.34	TO	367+03.7	100	25	201				1	1	LEFT PASSING
STATION EQUATION			STA. 367+03.70 BK = STA. 380+92.90 AH								
380+92.9	TO	382+03.33	110	28	221				2	1	LEFT PASSING
382+03.33							20				BLUEBIRD LEFT STOP BAR
382+03.33	TO	382+61.13	58	14	116						LEFT PASSING
382+61.13							8				BLUEBIRD RIGHT STOP BAR
382+61.13	TO	382+61.61	1	1	1						LEFT PASSING
382+61.61							12				RAILROAD STOP BAR
382+61.61	TO	383+21.82	60	15	120						LEFT PASSING
383+21.82							12				RAILROAD STOP BAR
383+21.82	TO	385+93.46	272	68	543				4	3	RIGHT PASSING
385+93.46							12				RAILROAD STOP BAR
385+93.46	TO	386+18.46	25	6	50						RIGHT PASSING
386+18.46								62			RAILROAD LETTERS AND SYMBOLS
386+18.46	TO	386+43.46	25	6	50						RIGHT PASSING
386+43.46							12				RAILROAD STOP BAR
386+43.46	TO	386+92.61	49	12	98				1	1	RIGHT PASSING
386+92.61	TO	402+06.88		379	3,029				19	19	
402+06.88	TO	429+60.04		688					33	34	
429+60.04						90					CROSSWALK
429+60.04	TO	445+58.06		400					20	20	
445+58.06	TO	464+36.79		470	3,757				23	23	
STATION EQUATION			STA. 464+36.79 BK = STA. 465+76.55 AH								
465+76.55	TO	466+87.57		28	222				2	1	
466+87.57						SN 073-2008 OMISSION					
467+07.8	TO	491+45.02		609	4,874				29	30	
491+45.02	TO	498+82.94	738	184	1,476				9	9	LEFT PASSING
498+82.94	TO	499+98.21		29	231				1	1	
499+98.21	TO	507+59.51	761	190	1,523				10	10	RIGHT PASSING
507+59.51	TO	544+05.37		911	7,292				45	46	
STATION EQUATION			STA. 544+05.37 BK = STA. 544+05.87 AH								
544+05.87	TO	550+88.66		171	1,366				9	9	
550+88.66							16				CORGAN RIGHT STOP BAR
550+88.66	TO	551+07.5		5	38						
551+07.5							16				CORGAN LEFT STOP BAR
551+07.5	TO	576+88.45		645	5,162				32	32	
STATION EQUATION			STA. 576+88.45 BK = STA. 584+69.00 AH								
584+69.	TO	585+66.32		24	195				1	1	
TOTAL			2,747	8,561	59,900	90	216	124	425	427	

USER NAME = Zachary.Hughey		DESIGNED -	REVISED -	STATE OF ILLINOIS DEPARTMENT OF TRANSPORTATION			PAVEMENT MARKING SCHEDULE			F.A.P. RTE.	SECTION	COUNTY	TOTAL SHEETS	SHEET NO.
		DRAWN -	REVISED -							322	(5,6,7)RS-5,SW-1,SR-1	Perry	32	23
		CHECKED -	REVISED -							CONTRACT NO. 78B53				
PLOT DATE = 8/6/2025		DATE -	REVISED -							ILLINOIS FED.AID PROJECT				
					SCALE:		SHEET 9	OF 9	SHEETS	STA.	TO STA.			

MODEL: Schedule-4 (Sheet)  
FILE NAME: c:\paw\work\illinois\gov\zachary.hughey@illinois.gov\1102559D978B53-SHE-Schedules.dgn

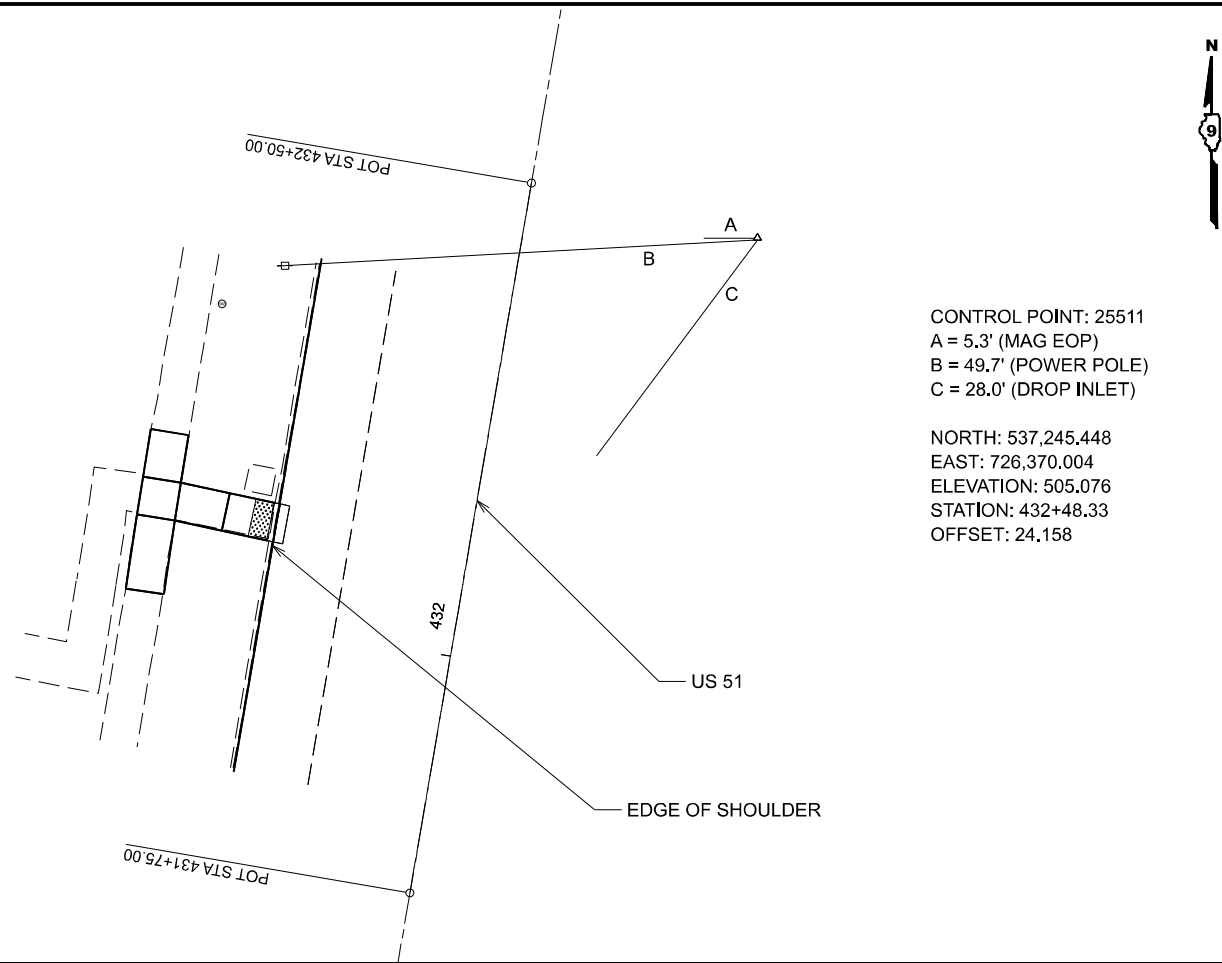
MODEL: US51 - Geopak Elements-1 [Sheet]  
FILE NAME: c:\p\work\illinois\gov\zachary.hughey@d102559\ID978B53-SW-GeopakElements.dgn



	USER NAME    = Zachary,Hughey	DESIGNED    -	REVISED    -	STATE OF ILLINOIS DEPARTMENT OF TRANSPORTATION	GEOPAK ELEMENTS				F.A.P RTE.	SECTION	COUNTY	TOTAL SHEETS	SHEET NO.
		DRAWN    -	REVISED    -						322	(5,6,7)RS-5,SW-1,SR-1	Perry	32	24
		CHECKED    -	REVISED    -						CONTRACT NO. 78B53				
	PLOT DATE    = 8/5/2025	DATE    -	REVISED    -		SCALE: 1"=50'	SHEET 1	OF 3	SHEETS	STA. 409+66.34	TO STA. 424+66.34			
					ILLINOIS    FED. AID PROJECT								

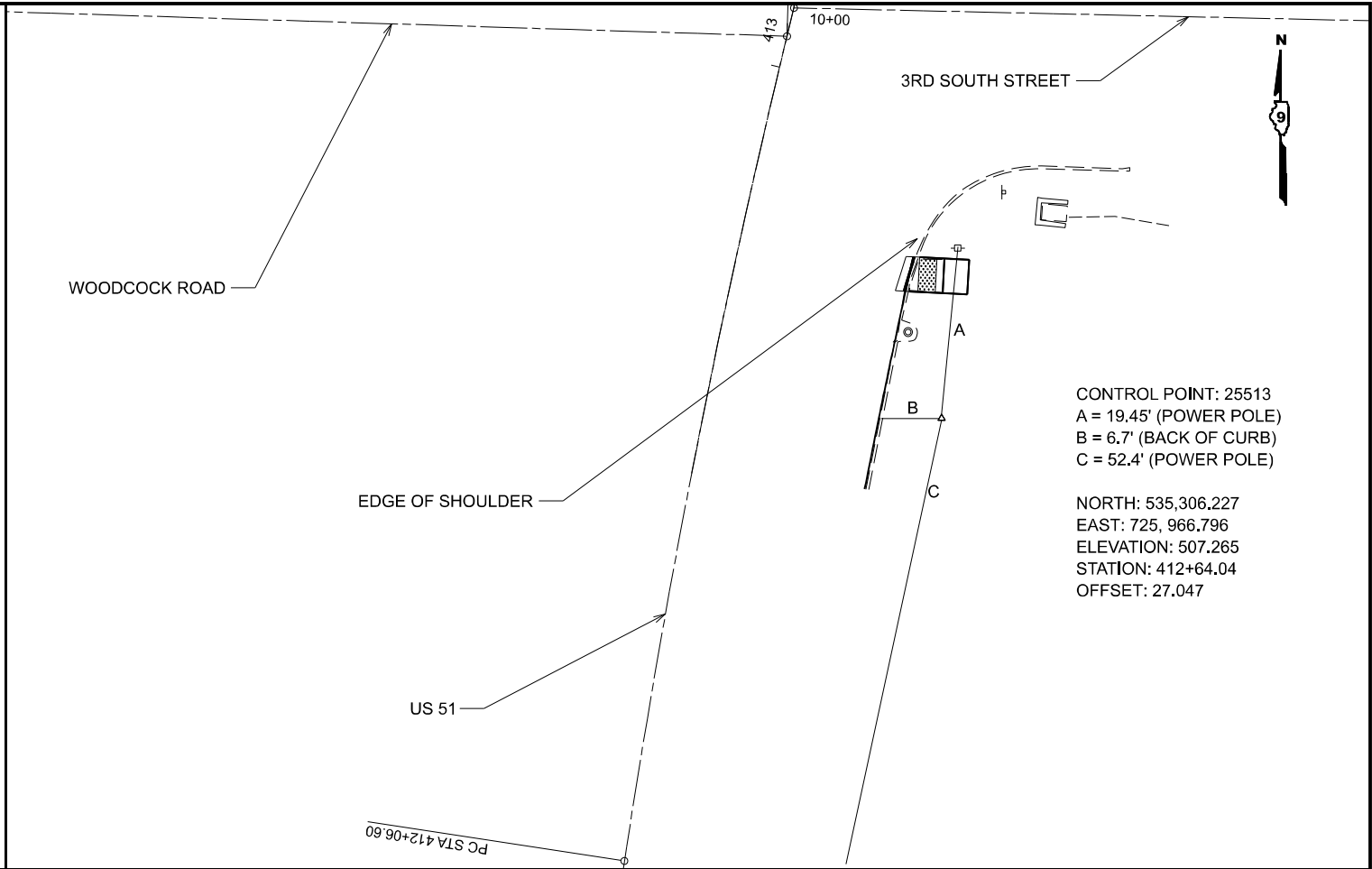


MODEL: Tie Point-1 [Sheet]  
FILE NAME: c:\pwwork\work\illinois.gov\zachary.hughey\1102559\0978853-SHW-Ties All-ID\_Curve.dgn



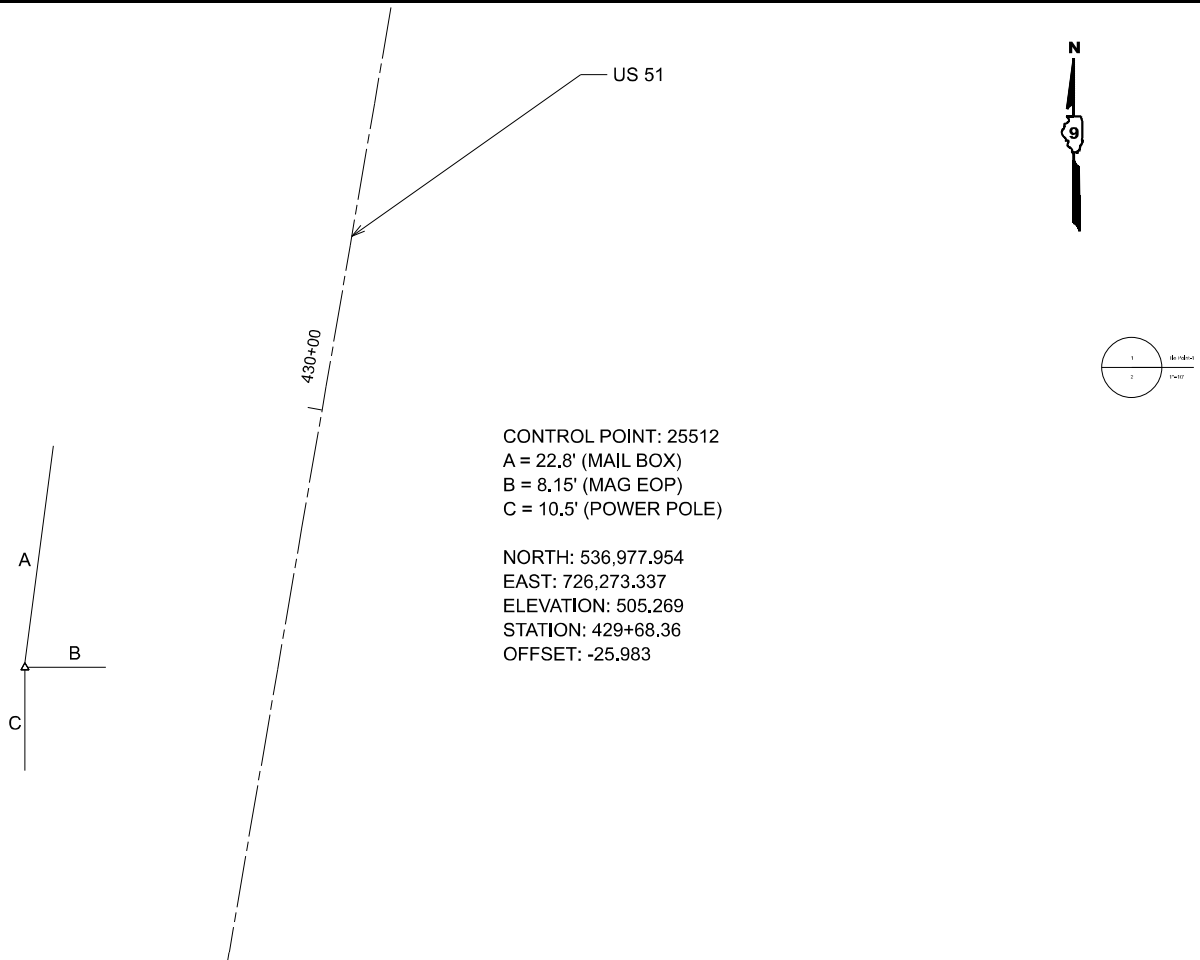
CONTROL POINT: 25511  
A = 5.3' (MAG EOP)  
B = 49.7' (POWER POLE)  
C = 28.0' (DROP INLET)

NORTH: 537,245.448  
EAST: 726,370.004  
ELEVATION: 505.076  
STATION: 432+48.33  
OFFSET: 24.158



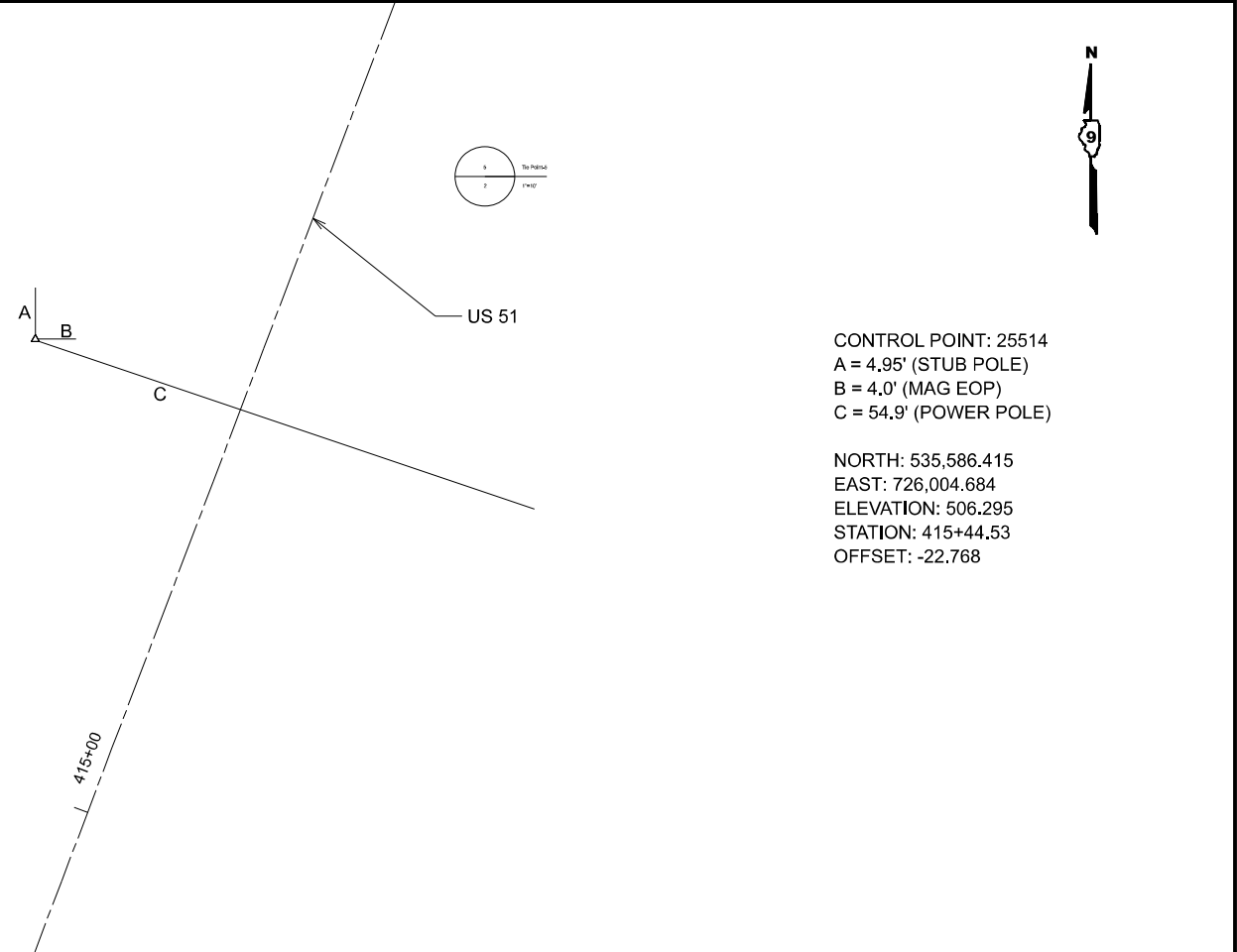
CONTROL POINT: 25513  
A = 19.45' (POWER POLE)  
B = 6.7' (BACK OF CURB)  
C = 52.4' (POWER POLE)

NORTH: 535,306.227  
EAST: 725,966.796  
ELEVATION: 507.265  
STATION: 412+64.04  
OFFSET: 27.047



CONTROL POINT: 25512  
A = 22.8' (MAIL BOX)  
B = 8.15' (MAG EOP)  
C = 10.5' (POWER POLE)

NORTH: 536,977.954  
EAST: 726,273.337  
ELEVATION: 505.269  
STATION: 429+68.36  
OFFSET: -25.983



CONTROL POINT: 25514  
A = 4.95' (STUB POLE)  
B = 4.0' (MAG EOP)  
C = 54.9' (POWER POLE)

NORTH: 535,586.415  
EAST: 726,004.684  
ELEVATION: 506.295  
STATION: 415+44.53  
OFFSET: -22.768

STATE OF ILLINOIS  
DEPARTMENT OF TRANSPORTATION

TIE POINTS

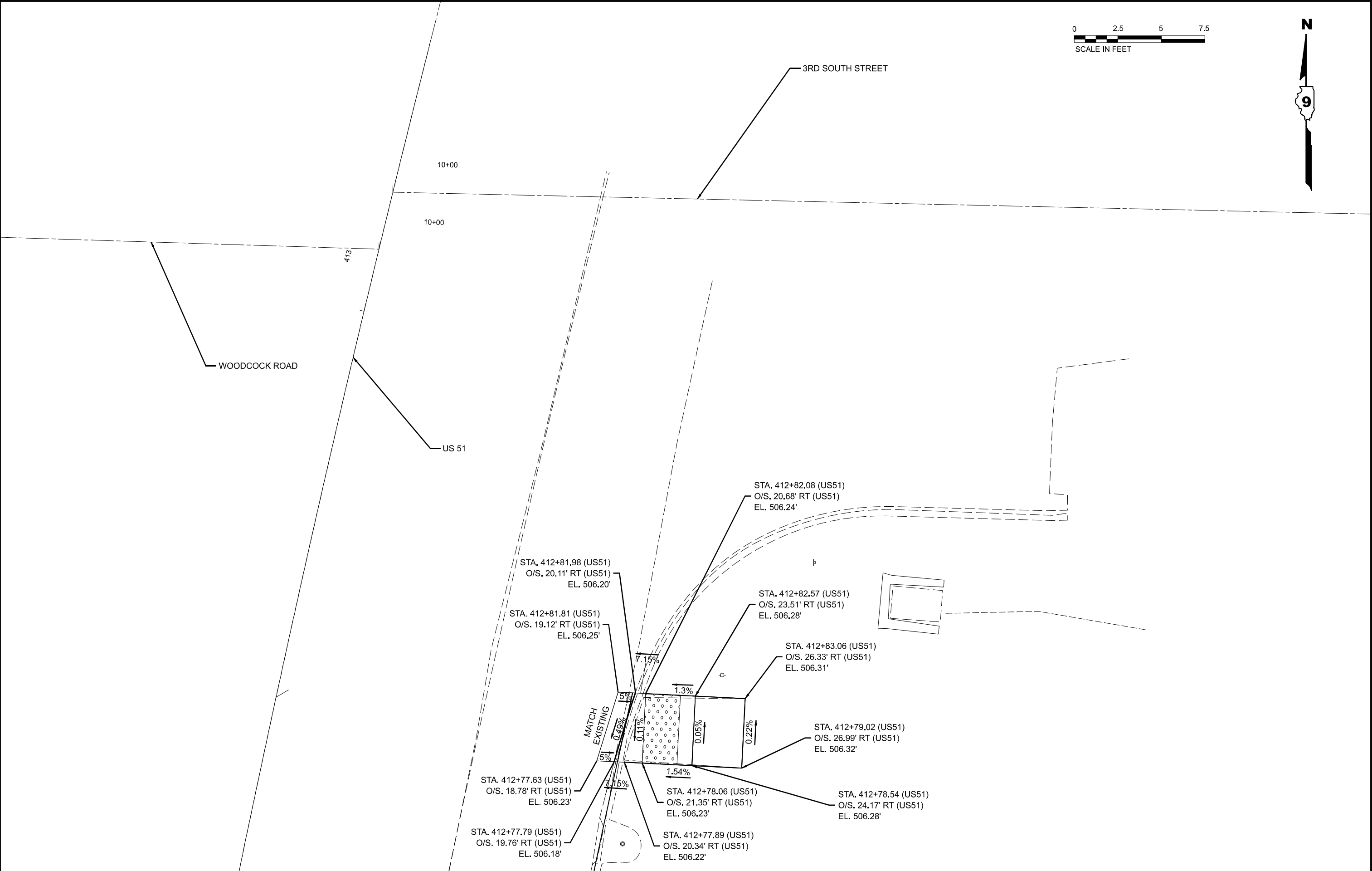
USER NAME	= Zachary.Hughey	DESIGNED	-	REVISED	-
DRAWN	-	REVIS	-	REVISED	-
CHECKED	-	REVIS	-	REVISED	-
PLOT DATE	= 8/5/2025	DATE	-	REVISED	-

SCALE: SHEET 2 OF 3 SHEETS STA. TO STA.

F.A.P. RTE.	SECTION	COUNTY	TOTAL SHEETS	SHEET NO.
322	(5,6,7)RS-5.SW-1,SR-1	Perry	32	25
CONTRACT NO. 78B53				
ILLINOIS FED. AID PROJECT				



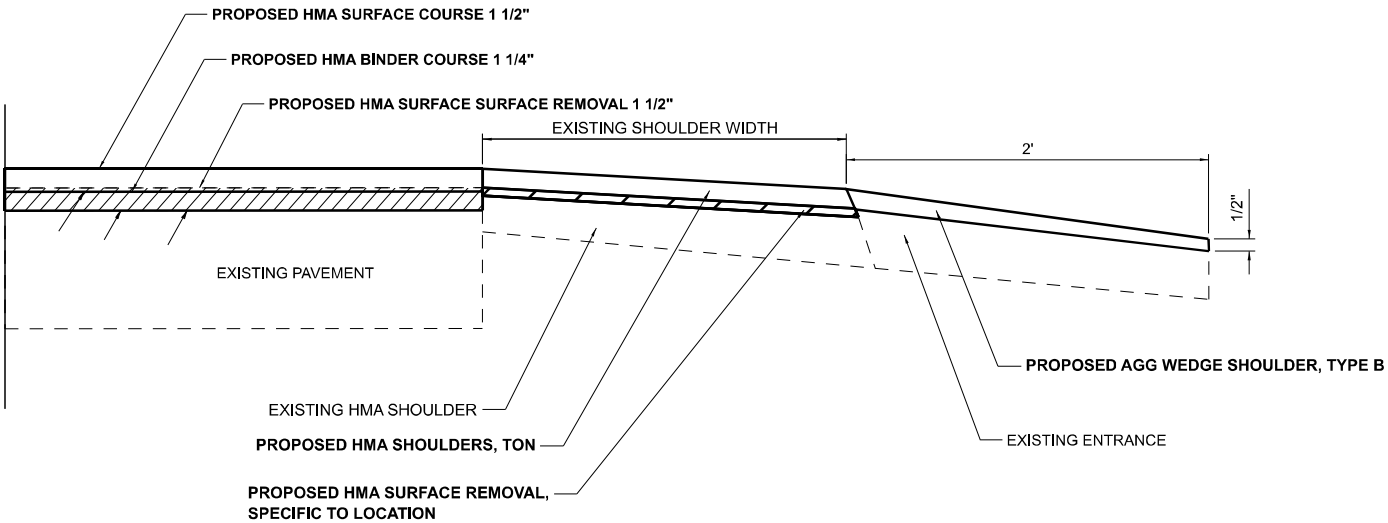
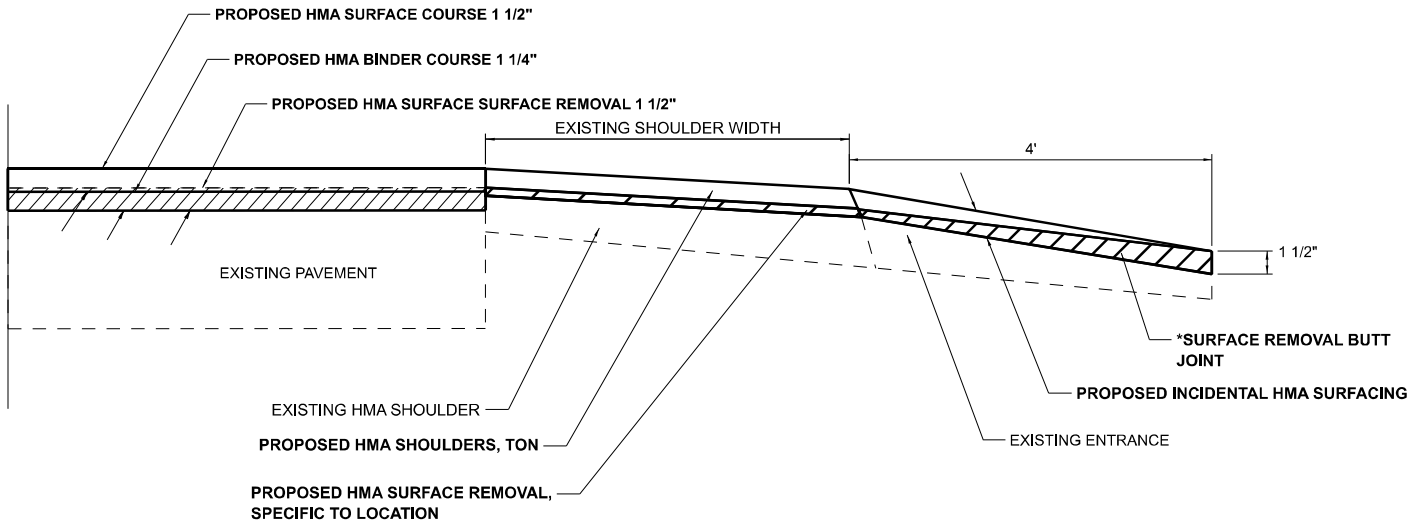
MODEL: 3rd South Street [Sheet]  
FILE NAME: c:\paw\_work\paw\illinois.gov\1102559\0978B53-SHM-Sidewalk 1.dgn



	USER NAME = Zachary.Hughey	DESIGNED -	REVISED -	STATE OF ILLINOIS DEPARTMENT OF TRANSPORTATION	3RD SOUTH STREET ADA RAMP				F.A.P RTE.	SECTION		COUNTY	TOTAL SHEETS	SHEET NO.
		DRAWN -	REVISED -						322	(5,6,7)RS-5,SW-1,SR-1		Perry	32	26
		CHECKED -	REVISED -		CONTRACT NO. 78B53									
	PLOT DATE = 8/5/2025	DATE -	REVISED -		SCALE:	SHEET 3	OF 3	SHEETS	STA.	TO STA.				
												ILLINOIS	FED. AID PROJECT	

HMA,PCC, OR OIL AND CHIP ENTRANCE WITH PAVED SHOULDER

AGGREGATE ENTRANCE WITH PAVED SHOULDER



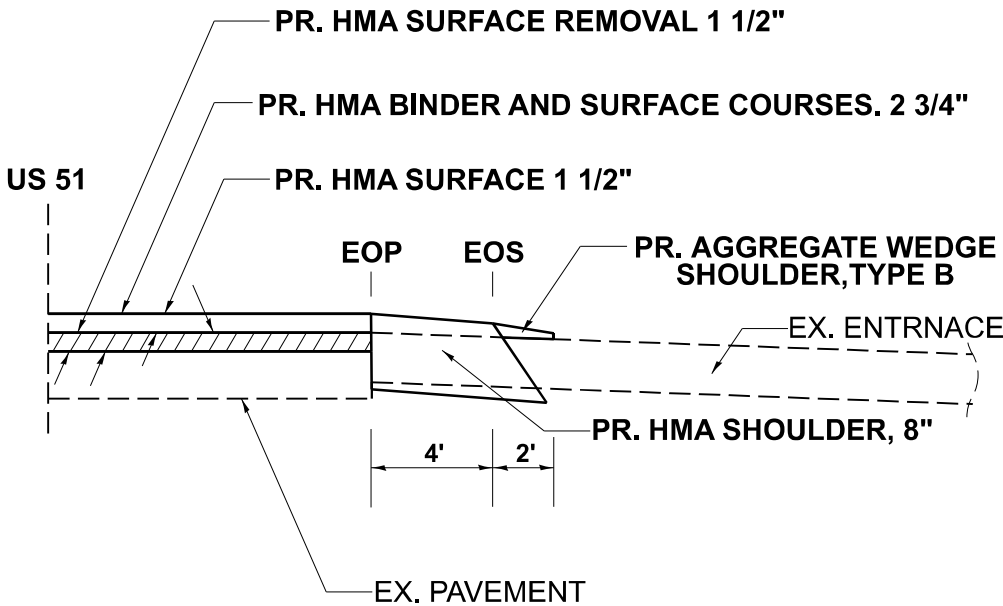
DRAWN	
REVISED	
REVISED	
REVISED	

STD. 9-

DRAWN	
REVISED	
REVISED	
REVISED	

STD. 9-

EX. AGGREGATE PRIVATE AND FIELD ENTANCES  
WITH HMA SHOULDER, 8"  
(NOT TO SCALE)



1. IF THE EXISTING SUBBASE IS INADEQUATE, AS DETERMINED BY THE ENGINEER, THE SIDE ROADS SHALL BE CORED OUT AND AGGREGATE SUBBASE, TYPE B SHALL BE PLACED FOR BASE. THE COST OF CORING OUT THE SIDEROAD AND ANY AGGREGATE BASE COURSE SHALL BE PAID FOR AS SPECIFIED IN ART. 109.04 OF THE STANDARD SPECIFICATIONS FOR ROAD AND BRIDGE CONSTRUCTION. IF EXISTING SUBBASE IS DETERMINED TO BE ADEQUATE, THE PREPARATION OF THE BASE SHALL BE CONSTRUCTED ACCORDING TO ARTICLE 406.09.
2. VARIABLE SHAPING IS INCLUDED IN THE COST OF INCIDENTAL HOT-MIX ASPHALT SURFACING.
3. \*SURFACE REMOVAL BUTT JOINT ON ENTRANCES IS INCLUDED IN THE COST OF INCIDENTAL HOT-MIX ASPHALT SURFACING.

MODEL: Entrance Details-1 [Sheet]  
FILE NAME: c:\pw\work\illinois\gov\zachary.hughey\102559\0978853-SHS-District\Sids.dgn

USER NAME = Zachary.Hughey	DESIGNED -	REVISED -
	DRAWN -	REVISED -
	CHECKED -	REVISED -
PLOT DATE = 8/6/2025	DATE -	REVISED -

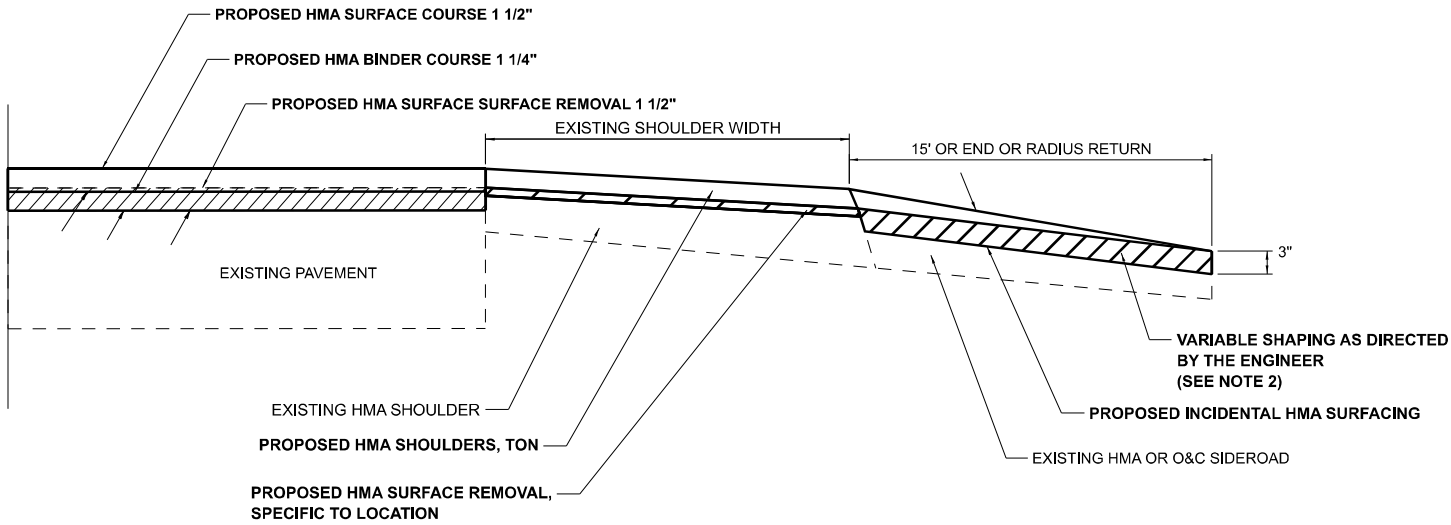
STATE OF ILLINOIS  
DEPARTMENT OF TRANSPORTATION

ENTRANCE DETAILS

SCALE: SHEET 1 OF 6 SHEETS STA. TO STA.

F.A.P RTE.	SECTION	COUNTY	TOTAL SHEETS	SHEET NO.
322	(5.6,7)RS-5.SW-1,SR-1	Perry	32	27
CONTRACT NO. 78B53				
ILLINOIS FED. AID PROJECT				

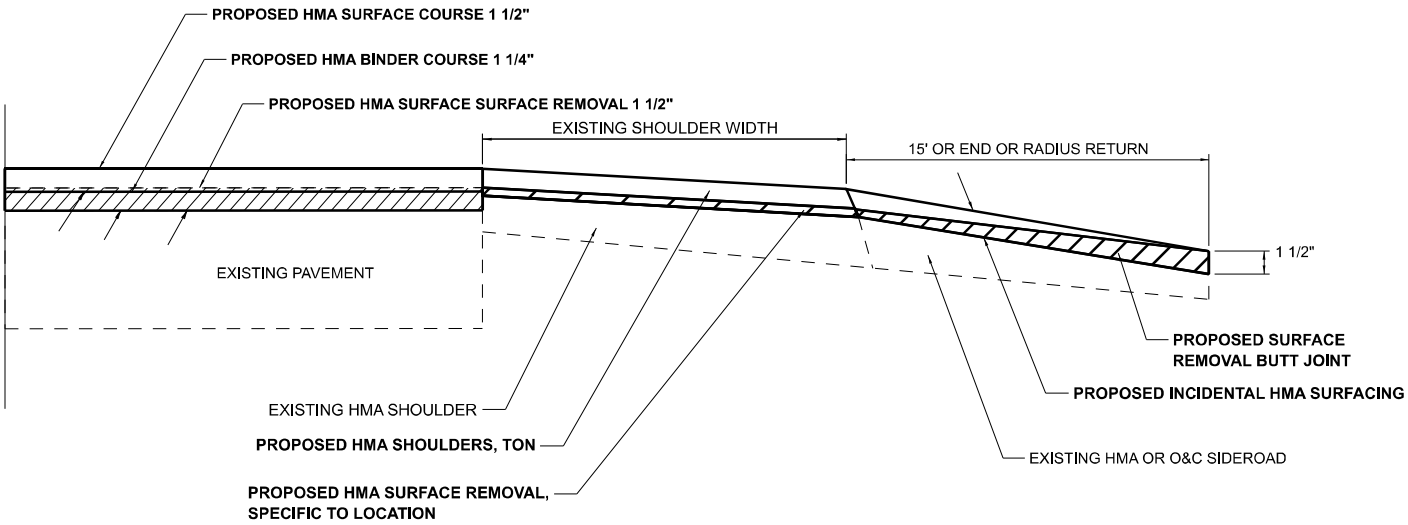
AGGREGATE SIDEROADS WITH PAVED SHOULDER



DRAWN	
REVISED	
REVISED	
REVISED	

STD. 9-

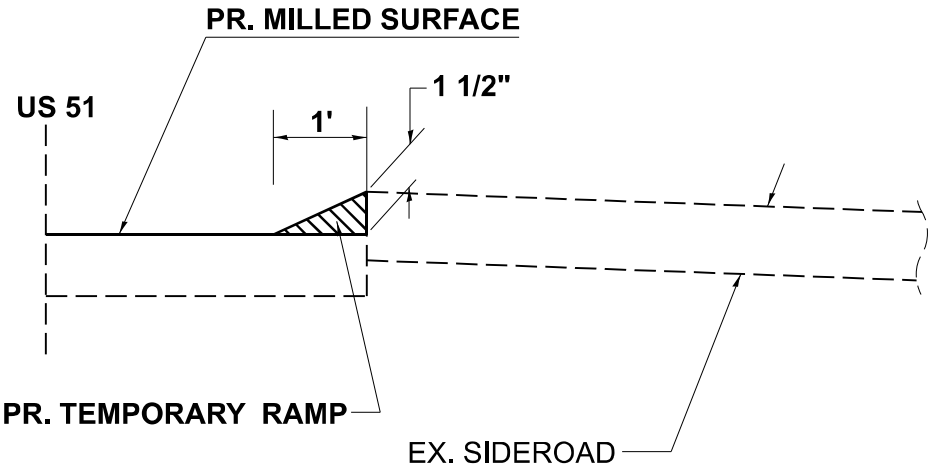
HMA,PCC, OR OIL AND CHIP SIDEROADS WITH PAVED SHOULDER



DRAWN	
REVISED	
REVISED	
REVISED	

STD. 9-

TEMPORARY RAMP AT SIDEROADS AND ENTRANCES  
(NOT TO SCALE)



1. IF THE EXISTING SUBBASE IS INADEQUATE, AS DETERMINED BY THE ENGINEER, THE SIDE ROADS SHALL BE CORED OUT AND AGGREGATE SUBBASE, TYPE B SHALL BE PLACED FOR BASE. THE COST OF CORING OUT THE SIDEROAD AND ANY AGGREGATE BASE COURSE SHALL BE PAID FOR AS SPECIFIED IN ART. 109.04 OF THE STANDARD SPECIFICATIONS FOR ROAD AND BRIDGE CONSTRUCTION. IF EXISTING SUBBASE IS DETERMINED TO BE ADEQUATE, THE PREPARATION OF THE BASE SHALL BE CONSTRUCTED ACCORDING TO ARTICLE 406.09.
2. VARIABLE SHAPING IS INCLUDED IN THE COST OF INCIDENTAL HOT-MIX ASPHALT SURFACING.
3. \*SURFACE REMOVAL BUTT JOINT ON ENTRANCES IS INCLUDED IN THE COST OF INCIDENTAL HOT-MIX ASPHALT SURFACING.

MODEL: Entrance Details-2 [Sheet]  
FILE NAME: c:\pw\_work\work\illinois.gov\_zachary.hughey@d1102559\0978853-SHS-DistrictSids.dgn

USER NAME = Zachary.Hughey	DESIGNED -	REVISED -
	DRAWN -	REVISED -
	CHECKED -	REVISED -
PLOT DATE = 8/6/2025	DATE -	REVISED -

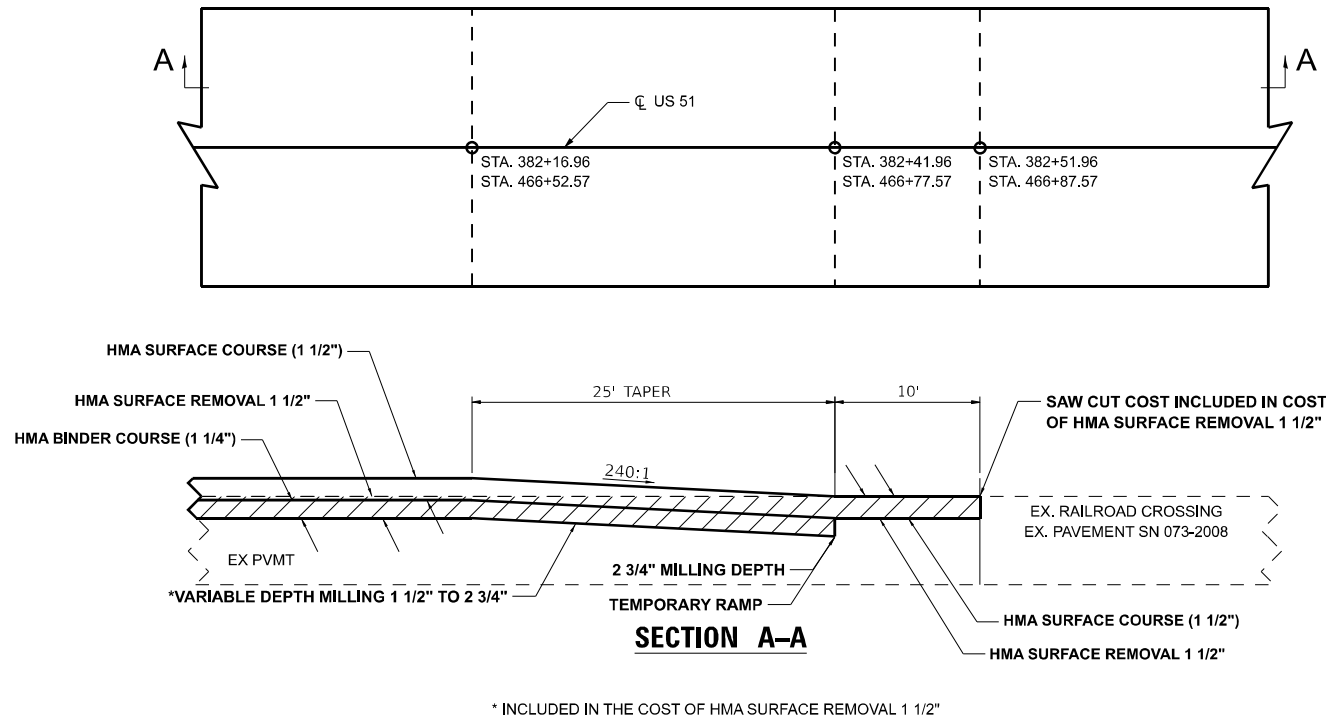
STATE OF ILLINOIS  
DEPARTMENT OF TRANSPORTATION

SIDEROAD DETAILS

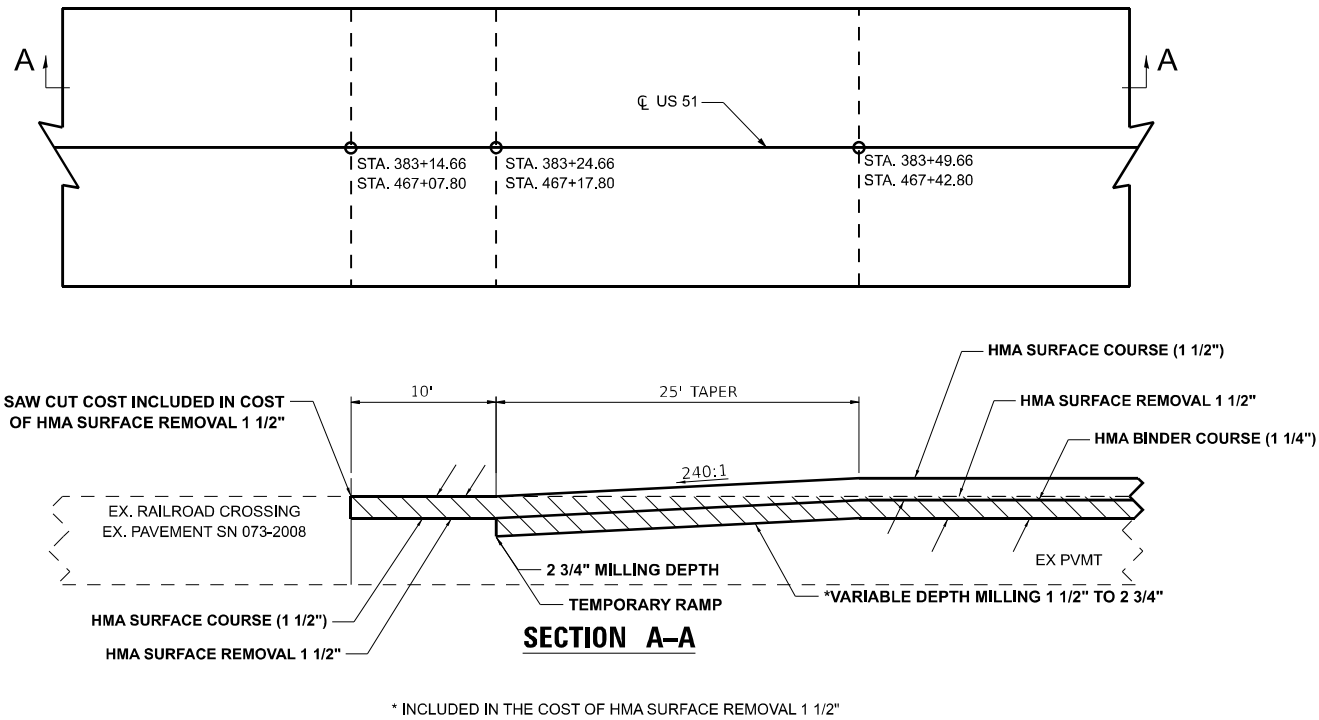
SCALE: SHEET 2 OF 6 SHEETS STA. TO STA.

F.A.P RTE.	SECTION	COUNTY	TOTAL SHEETS	SHEET NO.
322	(5,6,7)RS-5.SW-1,SR-1	Perry	32	28
CONTRACT NO. 78B53				
ILLINOIS FED. AID PROJECT				

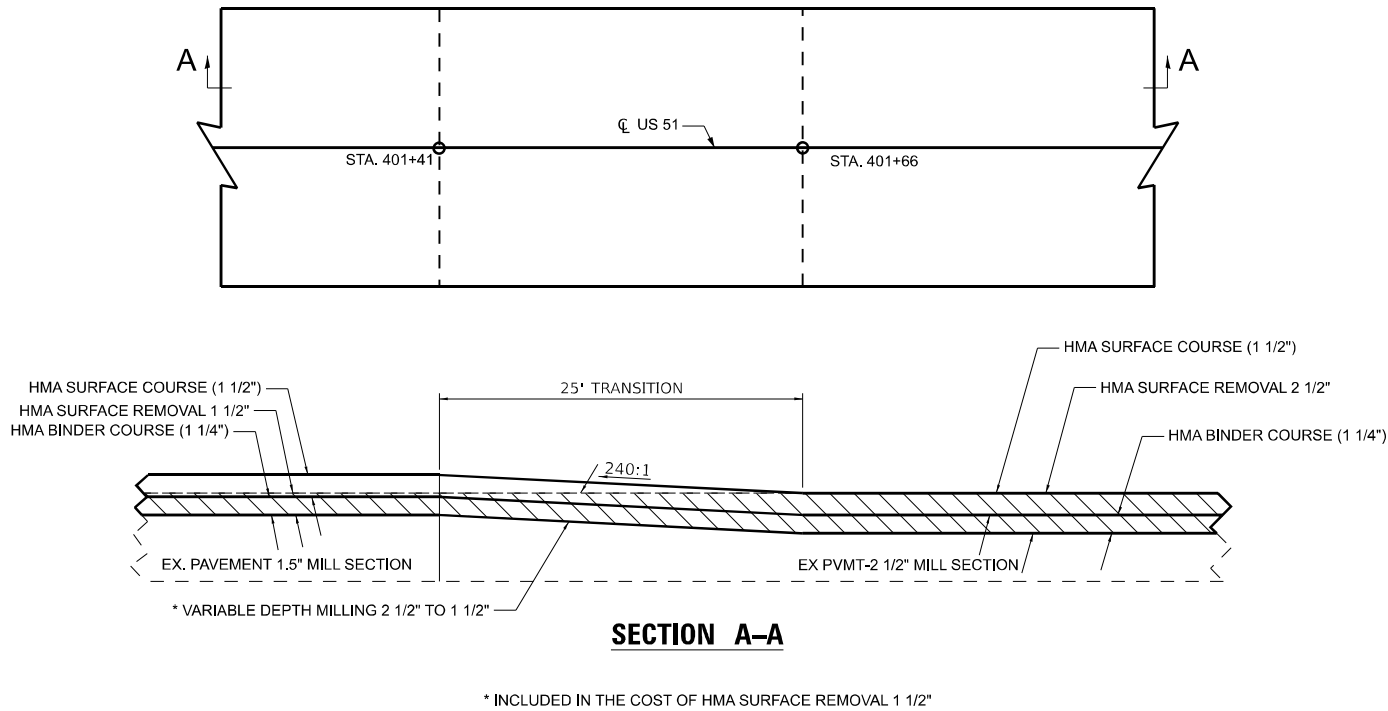
RESURFACING TRANSITION  
RAILROAD CROSSING  
SN 073-2008 APPROACH PAVEMENT



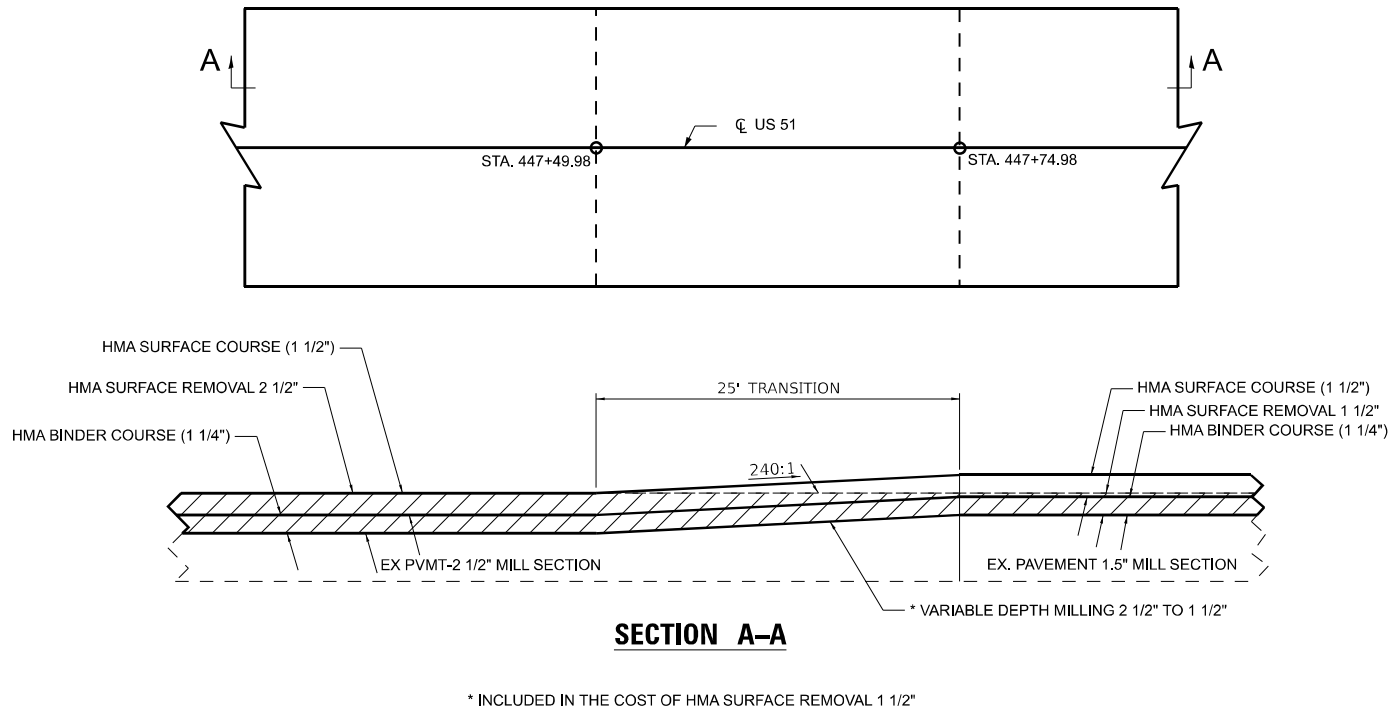
RESURFACING TRANSITION  
RAILROAD CROSSING  
SN 073-2008 APPROACH PAVEMENT



MILLING TRANSITION



MILLING TRANSITION



STATE OF ILLINOIS  
DEPARTMENT OF TRANSPORTATION

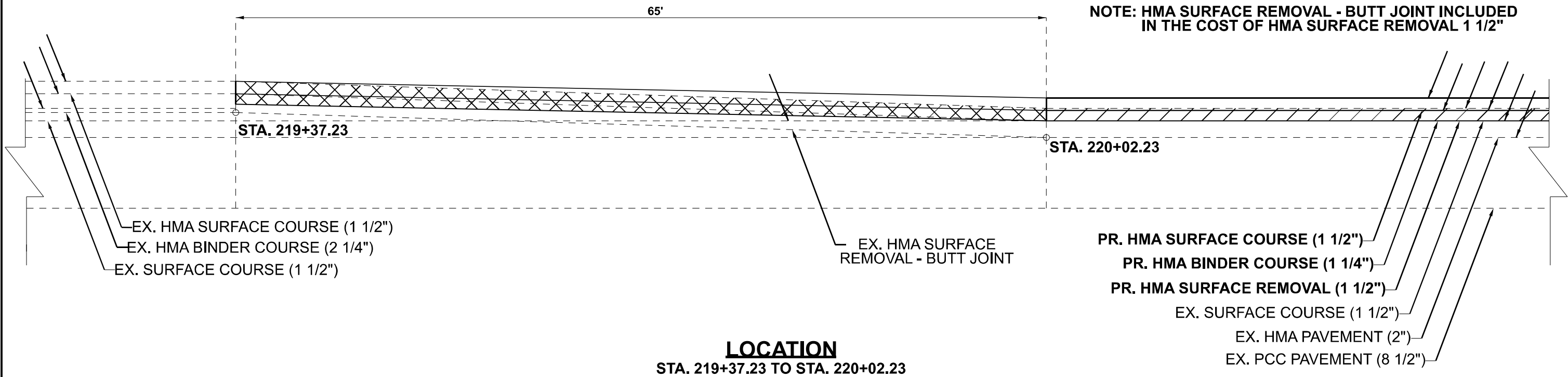
MAINLINE BUTT JOINT DETAIL, RESURFACING TRANSITION DETAIL  
DETAIL, MILLING TRANSITION DETAIL

SCALE: SHEET 3 OF 6 SHEETS STA. TO STA.

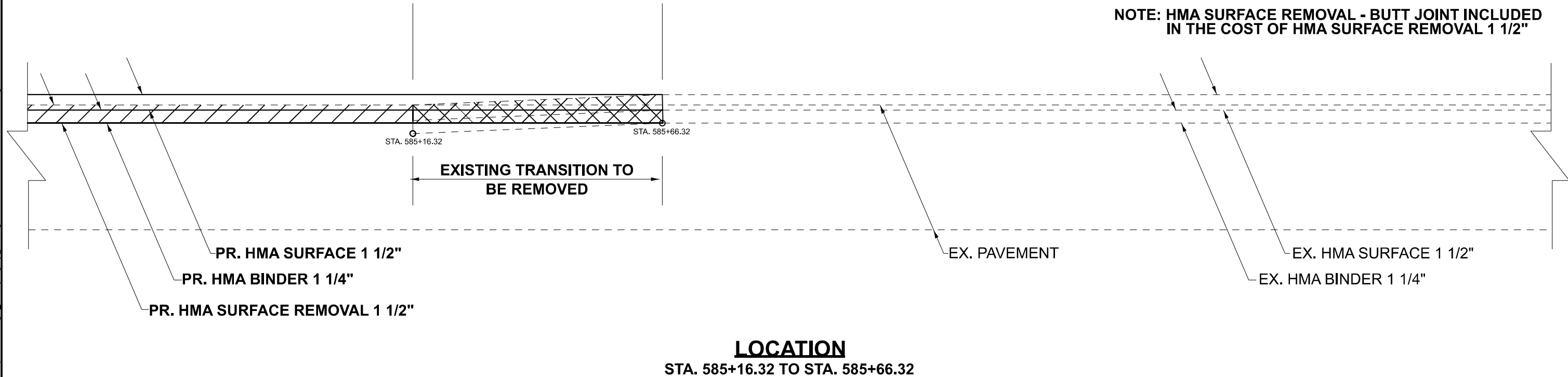
F.A.P. RTE.	SECTION	COUNTY	TOTAL SHEETS	SHEET NO.
322	(5,6,7)RS-5.SW-1,SR-1	Perry	32	29
CONTRACT NO. 78B53				
ILLINOIS FED. AID PROJECT				

MODEL: Entrance Details-3 [Sheet]  
FILE NAME: c:\p\work\illinois\gov\zachary.hughey@dtd1102559\0978B53-SNUS-DistrictStds.dgn

START OF PROJECT MAINLINE BUTT JOINT DETAIL



END OF PROJECT MAINLINE BUTT JOINT DETAIL  
(NOT TO SCALE)

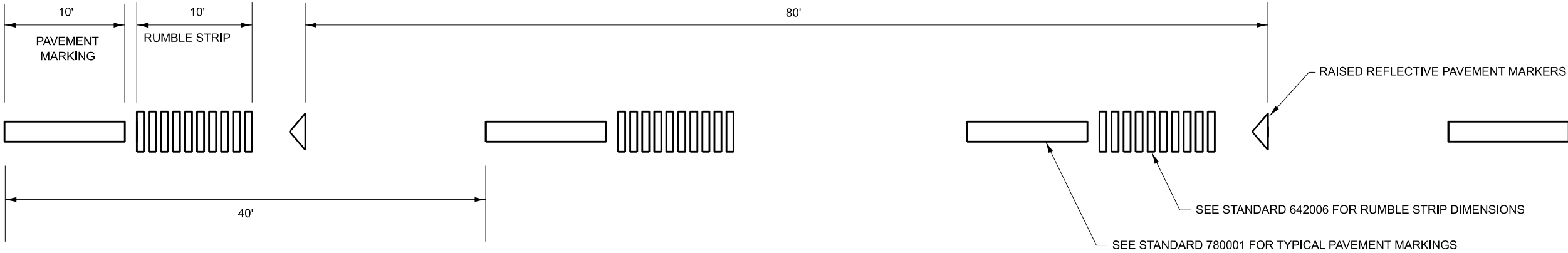


MODEL: Entrance Details-4 [Sheet]  
FILE NAME: c:\p\work\illinois\gov\zachary.hughey@d102559\0978853-SHS-DistrictStds.dgn

	USER NAME = Zachary.Hughey	DESIGNED -	REVISED -	STATE OF ILLINOIS DEPARTMENT OF TRANSPORTATION	MAINLINE BUTT JOINT DETAILS CENTERLINE RUMBLE STRIP DETAIL			F.A.P RTE.	SECTION	COUNTY	TOTAL SHEETS	SHEET NO.
		DRAWN -	REVISED -					322	(5,6,7)RS-5.SW-1,SR-1	Perry	32	30
		CHECKED -	REVISED -					CONTRACT NO. 78B53				
	PLOT DATE = 8/6/2025	DATE -	REVISED -		SCALE:	SHEET 4	OF 6 SHEETS	STA.	TO STA.	ILLINOIS FED. AID PROJECT		



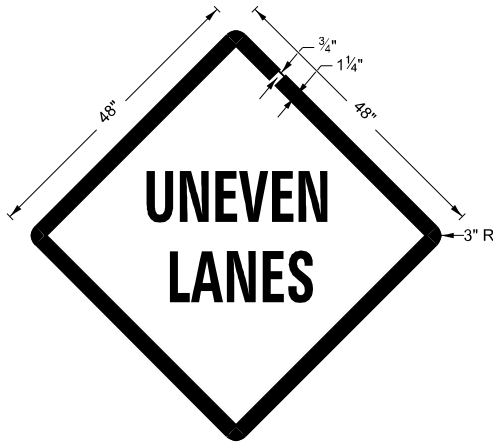
CENTERLINE RUMBLE STRIP DETAIL



MODEL: Entrance Details-5 [Sheet]  
FILE NAME: c:\p\work\illinois\gov\zachary.hughey\102559\0978B53-SHS-DistrictStds.dgn

	USER NAME = Zachary.Hughey	DESIGNED -	REVISED -	STATE OF ILLINOIS DEPARTMENT OF TRANSPORTATION	CENTERLINE RUMBLE STRIP DETAIL			F.A.P RTE.	SECTION	COUNTY	TOTAL SHEETS	SHEET NO.
		DRAWN -	REVISED -					322	(5,6,7)RS-5.SW-1,SR-1	Perry	32	31
		CHECKED -	REVISED -					CONTRACT NO. 78B53				
	PLOT DATE = 8/6/2025	DATE -	REVISED -		SCALE:	SHEET 5	OF 6 SHEETS	STA.	TO STA.	ILLINOIS   FED. AID PROJECT		

UNEVEN LANES SIGN  
W8-11 (48" X 48")



COLORS:

LEGEND AND BORDER - BLACK NON-REFLECTORIZED  
BACKGROUND - ORANGE REFLECTORIZED

NOTE: PRIOR TO ALLOWING TRAFFIC ON ANY PORTION OF THE ROADWAY THAT HAS BEEN COLDMILLED OR BEFORE RESURFACING OPERATIONS BEGIN, THE CONTRACTOR SHALL HAVE ERECTED "UNEVEN PAVEMENT" SIGNS THAT CONFORM TO THE ABOVE DETAILS. A MINIMUM OF ONE SIGN AT EACH END OF THE IMPROVEMENT WILL BE REQUIRED. THE CONTRACTOR SHALL MAINTAIN THE "UNEVEN PAVEMENT" SIGNS UNTIL THE RESURFACING OPERATIONS ARE COMPLETED.

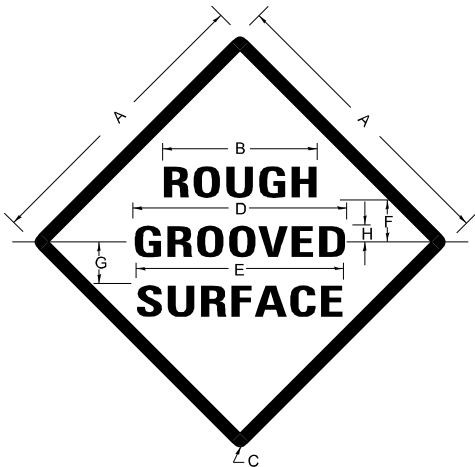
IF AT ANY TIME THE SIGNS ARE IN PLACE BUT NOT APPLICABLE, THEY SHALL BE TURNED FROM THE VIEW OF MOTORISTS OR COVERED AS DIRECTED BY THE ENGINEER.

THE COST OF FURNISHING, ERECTING, MAINTAINING, AND REMOVING THE REQUIRED SIGNS SHALL BE INCLUDED IN THE CONTRACT.

DRAWN	02-15-89
REVISED	05-08-08
REVISED	10-21-21
REVISED	05-27-22

STD. 9-24

ILLINOIS STANDARD  
ROUGH GROOVED SURFACE SIGN



COLORS

LEGEND AND BORDER- BLACK NON-REFLECTORIZED  
BACKGROUND- ORANGE REFLECTORIZED

SIGN SIZE	DIMENSIONS							
	A	B	C	D	E	F	G	H
48X48	48.0	24.1	3.0	34.0	33.0	6.0	13.0	3.5

SIGN SIZE	SERIES LINES			MARGIN	BORDER	BLANK STD.
	1	2	3			
48X48	7C	7C	7C	0.8	1.2	B4-48D

ALL DIMENSIONS IN INCHES

NOTES

PRIOR TO ALLOWING TRAFFIC ON ANY PORTION OF THE ROADWAY THAT HAS BEEN COLDMILLED, THE CONTRACTOR SHALL HAVE ERECTED "ROUGH GROOVED SURFACE" SIGNS THAT CONFORM TO THE ABOVE DETAILS. A MINIMUM OF ONE SIGN AT EACH END OF THE IMPROVEMENT WILL BE REQUIRED. THE CONTRACTOR SHALL MAINTAIN THE "ROUGH GROOVED SURFACE" SIGNS UNTIL THE COLDMILLED SURFACE IS COVERED WITH LEVELING BINDER OR SURFACE COURSE.

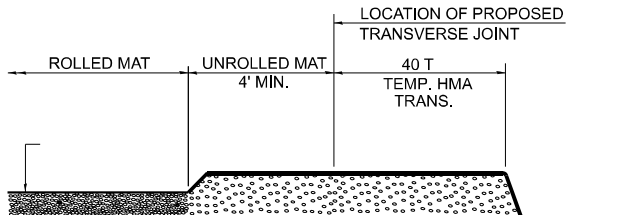
IF AT ANY TIME THE SIGNS ARE IN PLACE BUT NOT APPLICABLE, THEY SHALL BE TURNED FROM THE VIEW OF MOTORISTS OR COVERED AS DIRECTED BY THE ENGINEER.

THE COST OF FURNISHING, ERECTING, MAINTAINING, AND REMOVING THE REQUIRED SIGNS SHALL BE INCLUDED IN THE CONTRACT.

DRAWN	02-15-89
REVISED	03-27-08
REVISED	10-21-21
REVISED	05-27-22

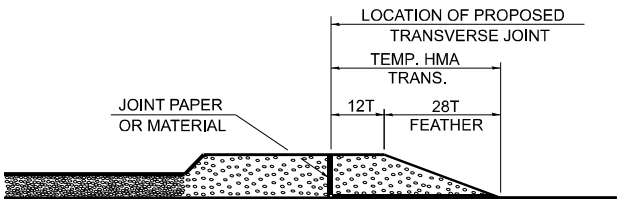
STD. 9-23

TEMPORARY HOT-MIX ASPHALT TRANSITIONS



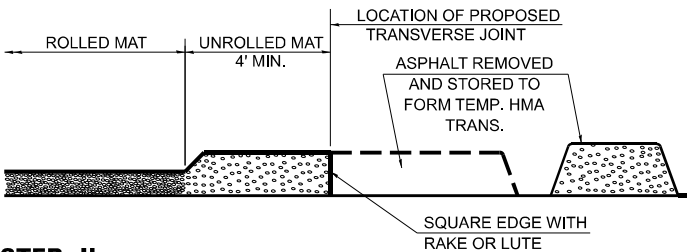
STEP I

1. PLACE HOT-MIX ASPHALT MAT, LENGTH 40 TIMES THE THICKNESS OF THE MAT BEING PLACED PAST THE PROPOSED TRANSVERSE JOINT LOCATION USING NORMAL OPERATING PROCEDURES.
2. EXTREME CARE SHOULD BE TAKEN TO MAINTAIN ENOUGH MATERIAL IN FRONT OF THE SCREED TO MAINTAIN REQUIRED PAVING DEPTH.



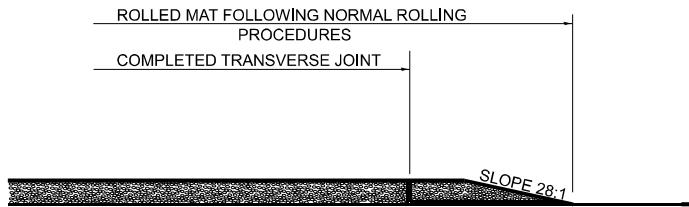
STEP III

1. JOINT PAPER OR OTHER PRESELECTED JOINT MATERIAL IS THEN PLACED IN THE CLEARED AREA AND THE EXCESS ASPHALT USED TO HAND FORM A TRANSITION TO THE DIMENSIONS SHOWN ABOVE.
2. NOTE THAT IN CONSTRUCTING THE TRANSITION, THE MAT DEPTH IS CONTINUED AS PART OF THE TRANSITION BEFORE FORMING THE FEATHER.



STEP II

1. MOVE THE PAVER OUT OF THE WAY AND REMOVE THE ASPHALT FROM THE AREA OF THE PROPOSED TEMPORARY HOT-MIX ASPHALT TRANSITION.
2. SQUARE UP THE END OF THE MAT WITH A RAKE OR LUTE.
3. NOTE THAT THE MAT WITHIN 4' OF THE END OF JOINT IS NOT TO BE ROLLED AT THIS TIME.



STEP IV

1. COMPLETE TEMPORARY TRANSITION BY ROLLING.
2. TO RESUME PAVING, AT THE JOINT, REMOVE TEMPORARY TRANSITION AND DISPOSE OF THE MATERIAL ACCORDING TO ART. 202.03 OF THE STD. SPECS. (COST INCLUDED IN THE CONTRACT).
3. CONSTRUCTING THE TEMPORARY TRANSITIONS WILL NOT BE PAID FOR SEPARATELY IN ACCORDANCE WITH ARTICLE 406.14 OF THE STANDARD SPECIFICATIONS.

STD. 9-18

DRAWN	02-15-89
REVISED	01-09-07
REVISED	10-21-21
REVISED	05-26-22

STATE OF ILLINOIS  
DEPARTMENT OF TRANSPORTATION

DISTRICT STANDARDS

SCALE: SHEET 6 OF 6 SHEETS STA. TO STA.

F.A.P RTE.	SECTION	COUNTY	TOTAL SHEETS	SHEET NO.
322	(5,6,7)RS-5.SW-1,SR-1	Perry	32	32
CONTRACT NO. 78B53				
ILLINOIS FED. AID PROJECT				

MODEL: Entrance Details-6 (Sheet)  
FILE NAME: c:\pwworking\illinois.gov\_zachary.hughey\102559\0978B53-Sys-DistrictStd.dgn