

STATE OF ILLINOIS
DEPARTMENT OF TRANSPORTATION

F.A.I. RTE.	SECTION	COUNTY	TOTAL SHEETS	SHEET NO.
70	D7 HIGHWAY LIGHTING 2025-1	EFFINGHAM	9	1
ILLINOIS CONTRACT NO. 74D37				

FOR INDEX OF SHEETS, SEE SHEET NO. 2

PROPOSED
HIGHWAY PLANS

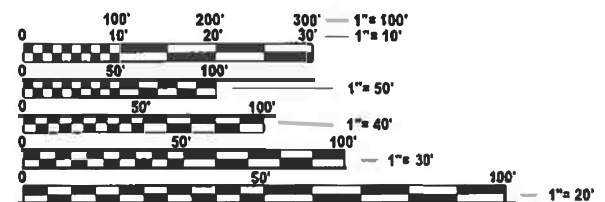
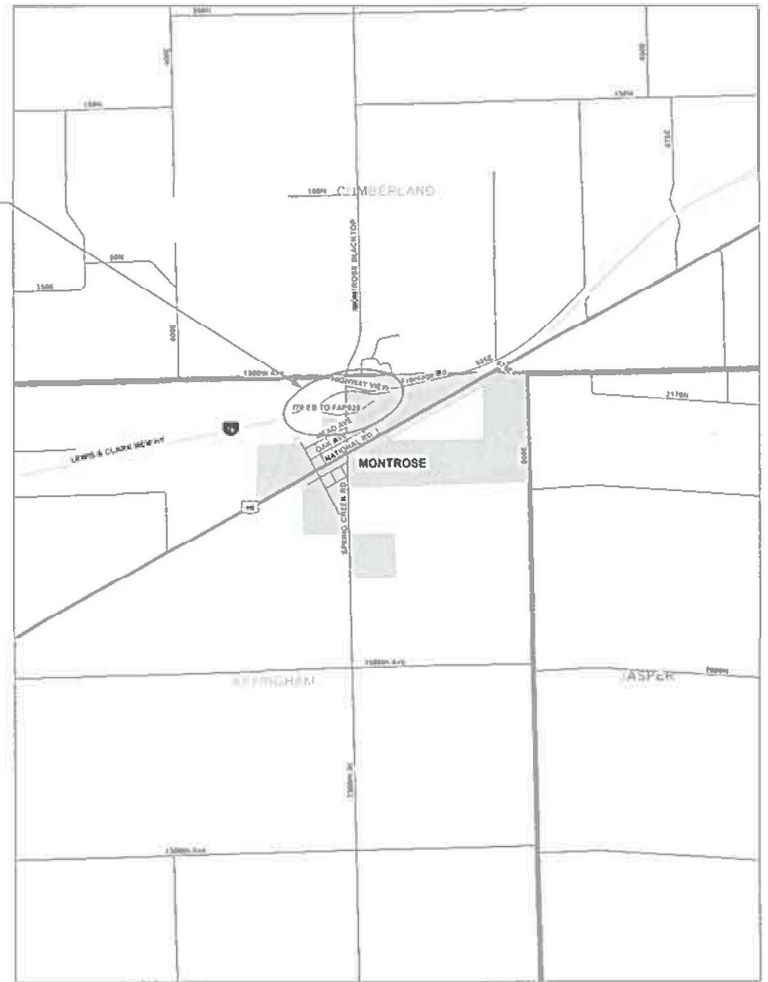
FAI ROUTE (70)
D7 HIGHWAY LIGHTING 2025-1
PROJECT NHPP-DJVH (958)
REMOVE AND REPLACE LIGHTING
EFFINGHAM COUNTY

C-97-002-25

D-97-002-25



LOCATION OF THE PROJECT
MONTROSE EXIT 105 ON I-70



FULL SIZE PLANS HAVE BEEN PREPARED USING STANDARD
ENGINEERING SCALES. REDUCED SIZED PLANS WILL NOT
CONFORM TO STANDARD SCALES. IN MAKING MEASUREMENTS
ON REDUCED PLANS, THE ABOVE SCALES MAY BE USED.

J.U.L.I.E.
JOINT UTILITY LOCATION INFORMATION FOR EXCAVATION
1-800-892-0123
OR 811

PROJECT ENGINEER ROBERT GREUEL
PROJECT MANAGER DEWAYNE SEACHRIST

CONTRACT NO. 74D37

GROSS LENGTH = 2112 FT. = 0.4 MILE
NET LENGTH = 2112 FT. = 0.4 MILE

STATE OF ILLINOIS
DEPARTMENT OF TRANSPORTATION

SUBMITTED OCTOBER 14 20 25
Teresa C. Pineda
REGIONAL ENGINEER

December 5, 2025
Scott A. Etkin
ENGINEER OF DESIGN AND ENVIRONMENT

December 5, 2025
John J. Pineda
DIRECTOR OF HIGHWAYS PROJECT IMPLEMENTATION

PRINTED BY THE AUTHORITY
OF THE STATE OF ILLINOIS

GENERAL NOTES

ELECTRICAL WORK SHALL CONFORM TO NATIONAL, STATE, AND LOCAL CODES.

CONTRACTOR SHALL COORDINATE WITH AMEREN ILLINOIS CONSTRUCTION AND ENGINEERING SERVICES AT 1-888-659-4540 FOR ELECTRIC SERVICE INSTALLATION.

THE CONTRACTOR SHALL SET LIGHT POLES 18’ BEHIND EDGE OF PAVEMENT (WHITE LINE) OR AS DIRECTED BY ENGINEER.

A DEPTH OF FORTY-EIGHT INCHES (48”) OR GREATER FOR ALL UNDERGROUND UTILITIES SHALL BE MAINTAINED WITHIN ACCESS-CONTROLLED RIGHT OF WAY UNLESS CROSSING A WATERWAY WHERE THE MINIMUM ALLOWED DEPTH SHALL BE SIXTY INCHES (60”) BELOW THE FLOW LINE ELEVATION OF THE WATERWAY.

UTILITIES INSTALLED NEAR BRIDGE STRUCTURES SHALL BE A MINIMUM OF SEVENTY-FIVE FEET (75’) BEYOND THE BRIDGE ABUTMENT LOCATION.

SEEDING WILL NOT BE PERMITTED AT ANY TIME WHEN THE GROUND IS FROZEN, WET, OR IN AN UNTILLABLE CONDITION. LOCATIONS TO BE SEEDED WILL BE DETERMINED BY THE ENGINEER.

THE CONTRACTOR SHALL BE RESPONSIBLE FOR ANY MOWING, BRUSH AND SHRUB REMOVAL AND SHALL DISPOSE OF ALL REMOVED ITEMS OFF THE JOB SITE. THE COST OF THIS WORK SHALL BE INCLUDED IN THE BID PRICE FOR THE REMOVAL OF LIGHTING UNIT, NO SALVAGE.

THE FINISHED EARTHWORK SHALL HAVE A VEGETATION SUSTAINING SOIL COVERING THE TOP FOUR INCHES (100 MILLIMETERS) IN AREAS TO BE SEEDED OR SODDED. THE VEGETATION SUSTAINING SOIL REQUIRED WILL NOT BE PAID FOR SEPARATELY BUT WILL BE INCLUDED IN THE BID PRICE FOR THE REMOVAL OF POLE FOUNDATION.

ANY REFERENCE TO A STANDARD IN THESE PLANS SHALL BE INTERPRETED TO MEAN THE EDITION AS INDICATED BY THE SUBNUMBER SHOWN IN THE LIST OF STANDARDS OR THE COPY INCLUDED IN THESE PLANS.

THE CONTRACTOR SHALL BE RESPONSIBLE FOR LOCATING EXISTING IDOT ELECTRICAL FACILITIES AT HIS/HER OWN EXPENSE IF REQUIRED. THE CONTRACTOR SHALL ALSO BE LIABLE FOR ANY DAMAGE TO IDOT FACILITIES RESULTING FROM INACCURATE LOCATING.

THE CONTACTOR SHALL CONTACT JULIE AT LEAST 48 HOURS PRIOR TO EXCAVATION TO DETERMINE WHICH UTILITIES ARE IN THE AREA.

SIGNS ATTACHED TO LIGHT POLES SHALL BE REMOVED, PRESERVED AND REINSTALLED. THE COST OF THIS WORK SHALL BE INCLUDED IN THE BID PRICE FOR REMOVAL OF LIGHTING UNIT, NO SALVAGE.

ONCE CABLE IS REMOVED FROM UNIT DUCT IT SHALL BECOME THE CONTRACTOR’S PROPERTY.

INDEX OF SHEETS

- 1 COVER SHEET
- 2 GENERAL NOTES,HIGHWAY STANDARDS, INDEX OF SHEETS
- 3 SUMMARY OF QUANTITIES
- 4 ENVIRONMENTAL PLAN
- 5-8 LIGHTING PLAN
- 9 WIRING DIAGRAM AND LUMINAIRE PERFORMANCE TABLE

LIST OF ILLINOIS DOT HIGHWAY STANDARDS

NUMBER	DESCRIPTION
000001-09	STANDARD SYMBOLS, ABBREVIATIONS AND PATTERNS
001006	DECIMAL OF AN INCH AND OF A FOOT
701001-02	OFF-ROAD OPERATIONS, 2L, 2W, MORE THAN 15' (4.5m) AWAY
701006-05	OFF-ROAD OPERATIONS, MULTILANE, MORE THAN 15' (4.5m) AWAY
701101-05	OFF-ROAD OPERATIONS, MULTILANE, 15' (4.5m) TO 24" (600 MM) FROM PAVEMENT EDGE
701106-02	OFF-ROAD OPERATIONS, MULTILANE, MORE THAN 15' (4.5m) AWAY
701400-12	APPROACH TO THE LANE CLOSURE, FREEWAY/EXPRESSWAY
701406-13	LANE CLOSURE, FREEWAY/EXPRESSWAY, DAY OPERATIONS ONLY
701411-09	LANE CLOSURE, MULTILANE, AT ENTRANCE OR EXIT RAMP, FOR SPEEDS > 45 MPH
701456-05	PARTIAL EXIT RAMP CLOSURE FREEWAY/EXPRESSWAY
701501-06	URBAN LANE CLOSURE, 2L, 2W, UNDIVIDED
701901-11	TRAFFIC CONTROL DEVICES
821101-03	LUMINAIRE WIRING IN POLE
825011-04	LIGHTING CONTROLLER, PEDSTAL MOUNTED, 240V
830006-05	LIGHT POLE ALUMINUM DAVIT ARM
838001-01	BREAKAWAY DEVICES

MODEL: INDEX AND GENERAL NOTES [Sheet]
FILE NAME: c:\pwworking\dotd\greuel\1034628\074\037.sht-remote.dgn

	USER NAME = robert.greuel	DESIGNED -	REVISED -	STATE OF ILLINOIS DEPARTMENT OF TRANSPORTATION	GENERAL NOTES, HIGHWAY STANDARDS, INDEX OF SHEETS			F.A.I RTE	SECTION	COUNTY	TOTAL SHEETS	SHEET NO.
		DRAWN -	REVISED -					70	D7.HIGHWAY LIGHTING 2025-1	EFFINGHAM	9	2
		CHECKED -	REVISED -					CONTRACT NO. 74D37				
	PLOT DATE = 10/14/2025	DATE -	REVISED -		SCALE:	SHEET 1	OF 1 SHEETS	STA.	TO STA.	ILLINOIS FED. AID PROJECT		

MODEL: SQQ [Sheet]
FILE NAME: c:\pwworking\greuel\rd1034628\074D37.sht-SQQ.dgn

SUMMARY OF QUANTITIES				CONSTR. CODE
				90% FED 10% STATE
CODE NO.	ITEM	UNIT	TOTAL QUANTITY	SAFETY
				0021
				RURAL
* 66900200	NON-SPECIAL WASTE DISPOSAL	CU YD	57	57
* 66900530	SOIL DISPOSAL ANALYSIS	EACH	2	2
* 66901001	REGULATED SUBSTANCES PRE-CONSTRUCTION PLAN	L SUM	1	1
* 66901003	REGULATED SUBSTANCES FINAL CONSTRUCTION REPORT	L SUM	1	1
* 66901006	REGULATED SUBSTANCES MONITORING	CAL DA	2	2
67100100	MOBILIZATION	L SUM	1	1
70100420	TRAFFIC CONTROL AND PROTECTION, STANDARD 701411	EACH	2	2
70100700	TRAFFIC CONTROL AND PROTECTION, STANDARD 701406	L SUM	1	1
70100825	TRAFFIC CONTROL AND PROTECTION, STANDARD 701456	L SUM	1	1
70102620	TRAFFIC CONTROL AND PROTECTION, STANDARD 701501	L SUM	1	1
80400100	ELECTRIC SERVICE INSTALLATION	EACH	1	1
81028750	UNDERGROUND CONDUIT, COILABLE NONMETALLIC CONDUIT, 2" DIA.	FOOT	500	500
81603000	UNIT DUCT, 600V, 2-1C NO.8, 1/C NO.8 GROUND, (XLP-TYPE USE), 3/4" DIA. POLYETHYLENE	FOOT	5402	5402

* SPECIALTY ITEM

SUMMARY OF QUANTITIES				CONSTR. CODE
				90% FED 10% STATE
CODE NO.	ITEM	UNIT	TOTAL QUANTITY	SAFETY
				0021
				RURAL
82110007	LUMINAIRE, LED, ROADWAY, OUTPUT DESIGNATION G	EACH	17	17
82500330	LIGHTING CONTROLLER, PEDESTAL MOUNTED, 240VOLT, 60AMP	EACH	1	1
83003600	LIGHT POLE, ALUMINUM, 45 FT. M.H., 15 FT. DAVIT ARM	EACH	17	17
83600356	LIGHT POLE FOUNDATION, METAL, 15" BOLT CIRCLE, 8 5/8" X 6'	EACH	17	17
83800650	BREAKAWAY DEVICE, COUPLING WITH STAINLESS STEEL SCREEN	EACH	68	68
84200605	REMOVAL OF LIGHTING TOWER, NO SALVAGE	EACH	4	4
84500110	REMOVAL OF LIGHTING CONTROLLER	EACH	1	1
84500120	REMOVAL OF ELECTRIC SERVICE INSTALLATION	EACH	1	1
84500130	REMOVAL OF LIGHTING CONTROLLER FOUNDATION	EACH	1	1
89502300	REMOVE ELECTRIC CABLE FROM CONDUIT	FOOT	2720	2720
X2501000	SEEDING, CLASS 2 (SPECIAL)	ACRE	0.25	0.25
X8420510	REMOVAL OF TOWER FOUNDATION	EACH	4	4
Z0033024	MAINTAIN EXISTING LIGHTING SYSTEM	L SUM	1	1

REV - MS

	USER NAME = robert.greuel	DESIGNED -	REVISED -	STATE OF ILLINOIS DEPARTMENT OF TRANSPORTATION	SUMMARY OF QUANTITIES			F.A.I RTE	SECTION	COUNTY	TOTAL SHEETS	SHEET NO.
		DRAWN -	REVISED -					70	D7.HIGHWAY LIGHTING 2025-1	EFFINGHAM	9	3
		CHECKED -	REVISED -					CONTRACT NO. 74D37				
	PLOT DATE = 10/16/2025	DATE -	REVISED -		SCALE:	SHEET 1	OF 1 SHEETS	STA.	TO STA.	ILLINOIS FED.AID PROJECT		

EXHIBIT 2

EXHIBIT 3

EXHIBIT 4

EXHIBIT 5

LEGEND

- AREA OF CONSTRUCTION
- - - LOT LINES OF AFFECTED SITES

REGULATED SUBSTANCES CLASSIFICATIONS

	669.05(a)(1)		669.05(b)(1)
	669.05(a)(2)		669.05(b)(2)
	669.05(a)(3)		669.05(c)
	669.05(a)(4)		669.05(d)
	669.05(a)(5)		WORK ZONE
	669.05(a)(6)		

NOTE: ADDITIONAL DETAIL AND INFORMATION REGARDING REGULATED SUBSTANCES MANAGEMENT AND DISPOSAL CLASSIFICATION CAN BE FOUND IN THE STANDARD SPECIFICATIONS FOR ROAD AND BRIDGE CONSTRUCTION (SSRBC) SECTION 669.05

Project Mgr:	RO	Project No:	11227077	Contract No:	74D37
Drawn By:	SC	Scale:	AS-SHOWN	PESA No:	
Checked By:	RO	File No:		IDOT Job No:	C-97-002-25
Approved By:	RO	Date:	February 10, 2025	RDE Sequence No:	26724

Terracon
192 Exchange Blvd
Glendale Heights, IL 60139
(630) 717-4263

PROJECT LIMIT KEY MAP AND GENERAL LEGEND
PTB 202-041 WORK ORDER NO.: 001
FAI 70 & FAP 828
I-70 & SPRING CREEK ROAD, RMP 2031
MONTROSE, EFFINGHAM COUNTY, ILLINOIS

EXHIBIT
1

DIAGRAM IS FOR GENERAL LOCATION ONLY, AND IS NOT INTENDED FOR CONSTRUCTION PURPOSES.

STATE OF ILLINOIS
DEPARTMENT OF TRANSPORTATION

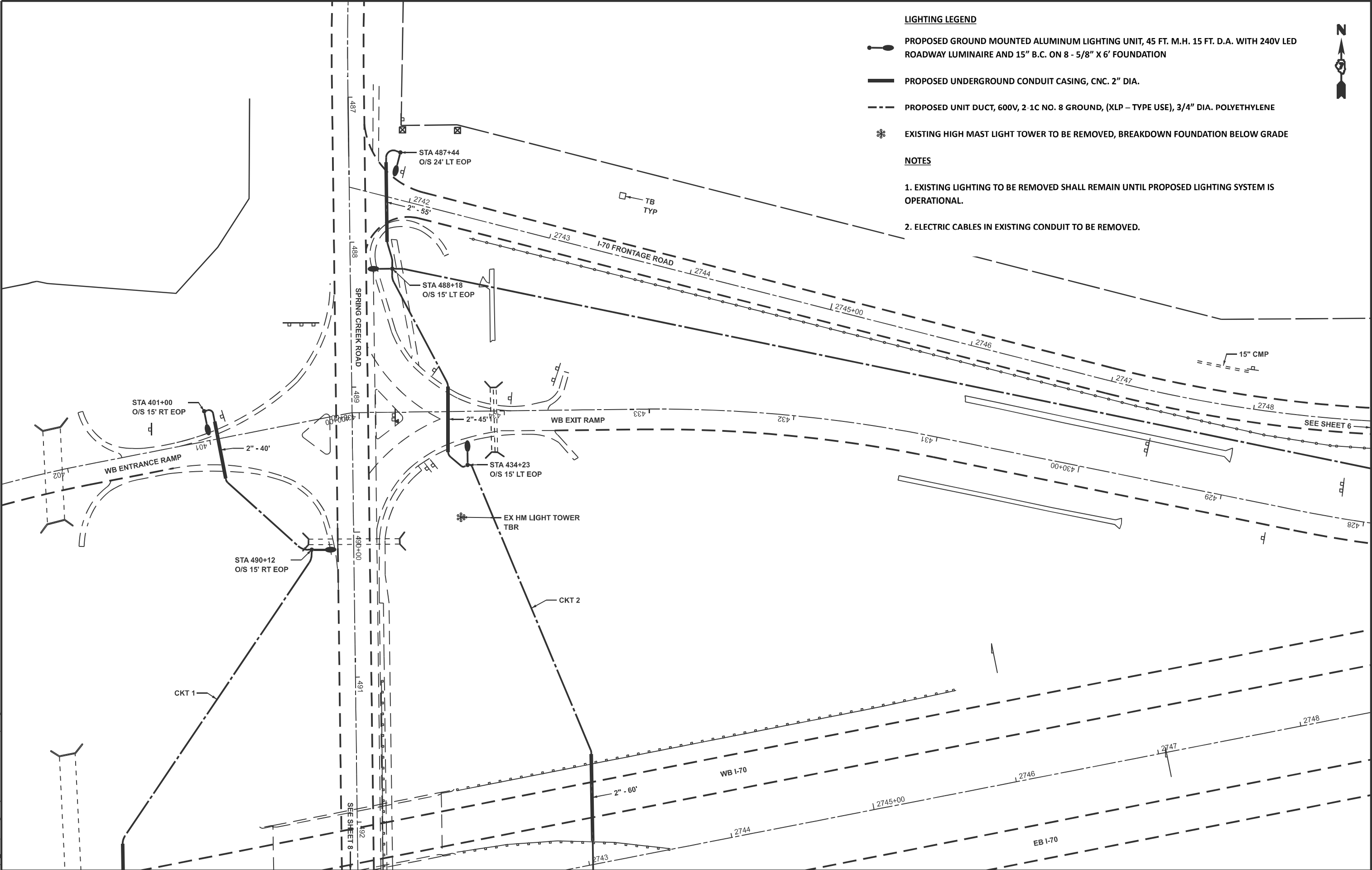
ENVIRONMENTAL PLAN

SCALE: SHEET 1 OF 5 SHEETS STA. TO STA.

F.A.I. RTE.	SECTION	COUNTY	TOTAL SHEETS	SHEET NO.
70	D7 HIGHWAY LIGHTING 2025-1	EFFINGHAM	9	4
CONTRACT NO. 74D37				
ILLINOIS FED. AID PROJECT				

MODEL: environmental [Sheet]
FILE NAME: c:\paw\work\kidd\greuel\fd1034628\0774D37-shh-misc.dgn

G:\Shared drives\Projects\2024 0595-WO #001 (IDOT)\TERRACON # 26113 - CADD\RMP 2031\2024.0595_PESA_WO #001 (RMP 2031).20250207 Draft SCC.dwg



LIGHTING LEGEND

- PROPOSED GROUND MOUNTED ALUMINUM LIGHTING UNIT, 45 FT. M.H. 15 FT. D.A. WITH 240V LED ROADWAY LUMINAIRE AND 15" B.C. ON 8 - 5/8" X 6' FOUNDATION
- PROPOSED UNDERGROUND CONDUIT CASING, CNC. 2" DIA.
- PROPOSED UNIT DUCT, 600V, 2-1C NO. 8 GROUND, (XLP - TYPE USE), 3/4" DIA. POLYETHYLENE
- EXISTING HIGH MAST LIGHT TOWER TO BE REMOVED, BREAKDOWN FOUNDATION BELOW GRADE

NOTES

- EXISTING LIGHTING TO BE REMOVED SHALL REMAIN UNTIL PROPOSED LIGHTING SYSTEM IS OPERATIONAL.
- ELECTRIC CABLES IN EXISTING CONDUIT TO BE REMOVED.



MODEL: Ramp B Intersection [Sheet]
FILE NAME: c:\p\work\dwg\greuel\1034628\0774D37-shl-dan.dgn


USER NAME	= robert.greuel	DESIGNED	-	REVISED	-
		DRAWN	-	REVISED	-
		CHECKED	-	REVISED	-
PLOT DATE	= 11/20/2025	DATE	-	REVISED	-


STATE OF ILLINOIS
DEPARTMENT OF TRANSPORTATION


LIGHTING PLAN


SCALE: SHEET 2 OF 5 SHEETS STA. TO STA.

F.A.I RTE.	SECTION	COUNTY	TOTAL SHEETS	SHEET NO.
70	D7 HIGHWAY LIGHTING 2025-1	EFFINGHAM	9	5
CONTRACT NO. 74D37				
ILLINOIS FED. AID PROJECT				

- 

PROPOSED GROUND MOUNTED ALUMINUM LIGHTING UNIT, 45 FT. M.H. 15 FT. D.A. WITH 240V LED ROADWAY LUMINAIRE AND 15" B.C. ON 8 - 5/8" X 6' FOUNDATION
- 

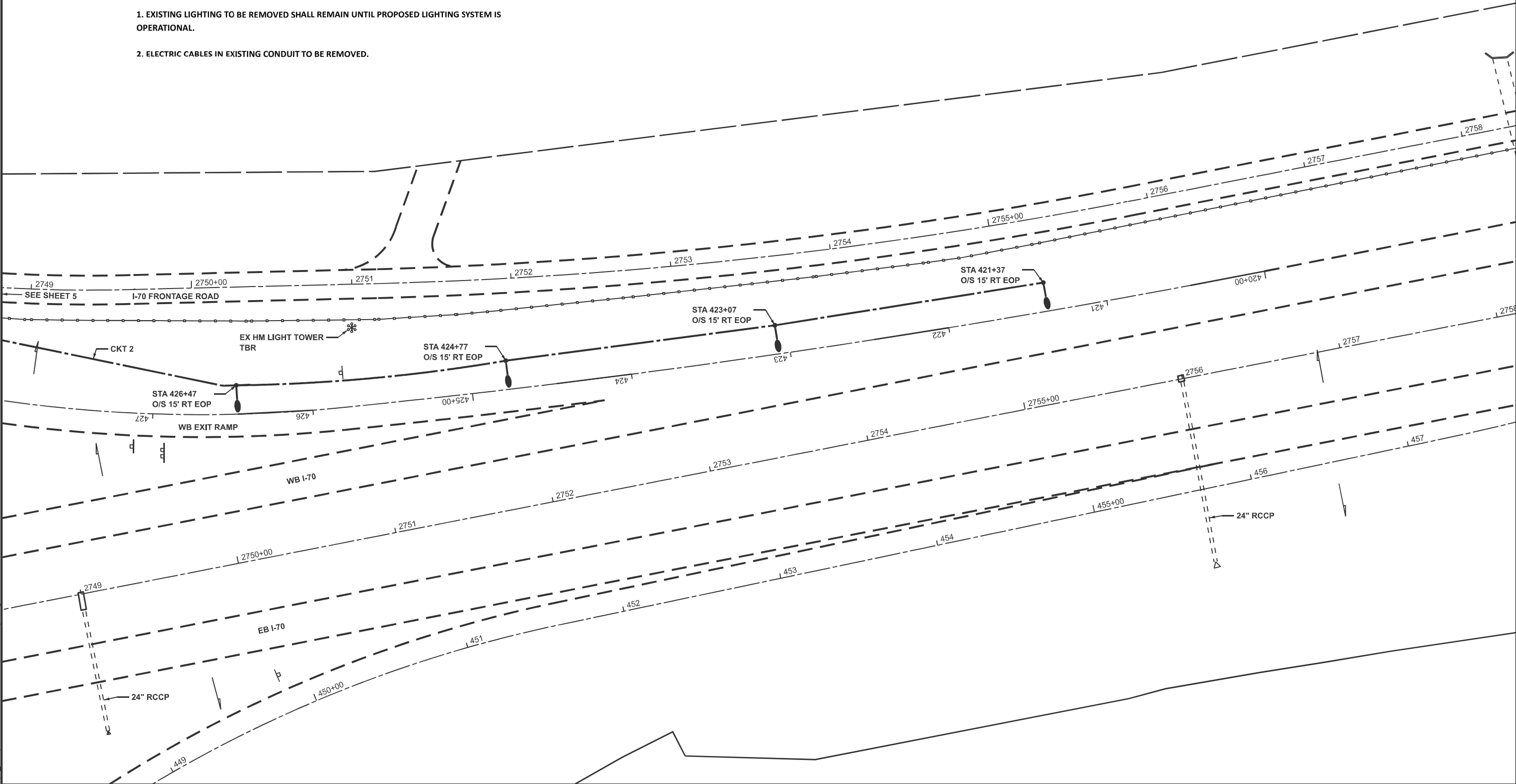
PROPOSED UNDERGROUND CONDUIT CASING, CNC. 2" DIA.
- 

PROPOSED UNIT DUCT, 600V, 2-1C NO. 8 GROUND, (XLP – TYPE USE), 3/4" DIA. POLYETHYLENE
- 

EXISTING HIGH MAST LIGHT TOWER TO BE REMOVED, BREAKDOWN FOUNDATION BELOW GRADE

NOTES

1. EXISTING LIGHTING TO BE REMOVED SHALL REMAIN UNTIL PROPOSED LIGHTING SYSTEM IS OPERATIONAL.
2. ELECTRIC CABLES IN EXISTING CONDUIT TO BE REMOVED.



MODEL: Ramp B (Sheet)
FILE NAME: c:\p\work\wisconsin\effingham\41034628\0714D37-shc-plan.dgn

USER NAME = robert.greuel	DESIGNED -	REVISED -
	DRAWN -	REVISED -
	CHECKED -	REVISED -
	DATE -	REVISED -
PLOT DATE = 11/20/2025		





STATE OF ILLINOIS
DEPARTMENT OF TRANSPORTATION

LIGHTING PLAN SHEET

SCALE: SHEET 3 OF 5 SHEETS STA. TO STA.

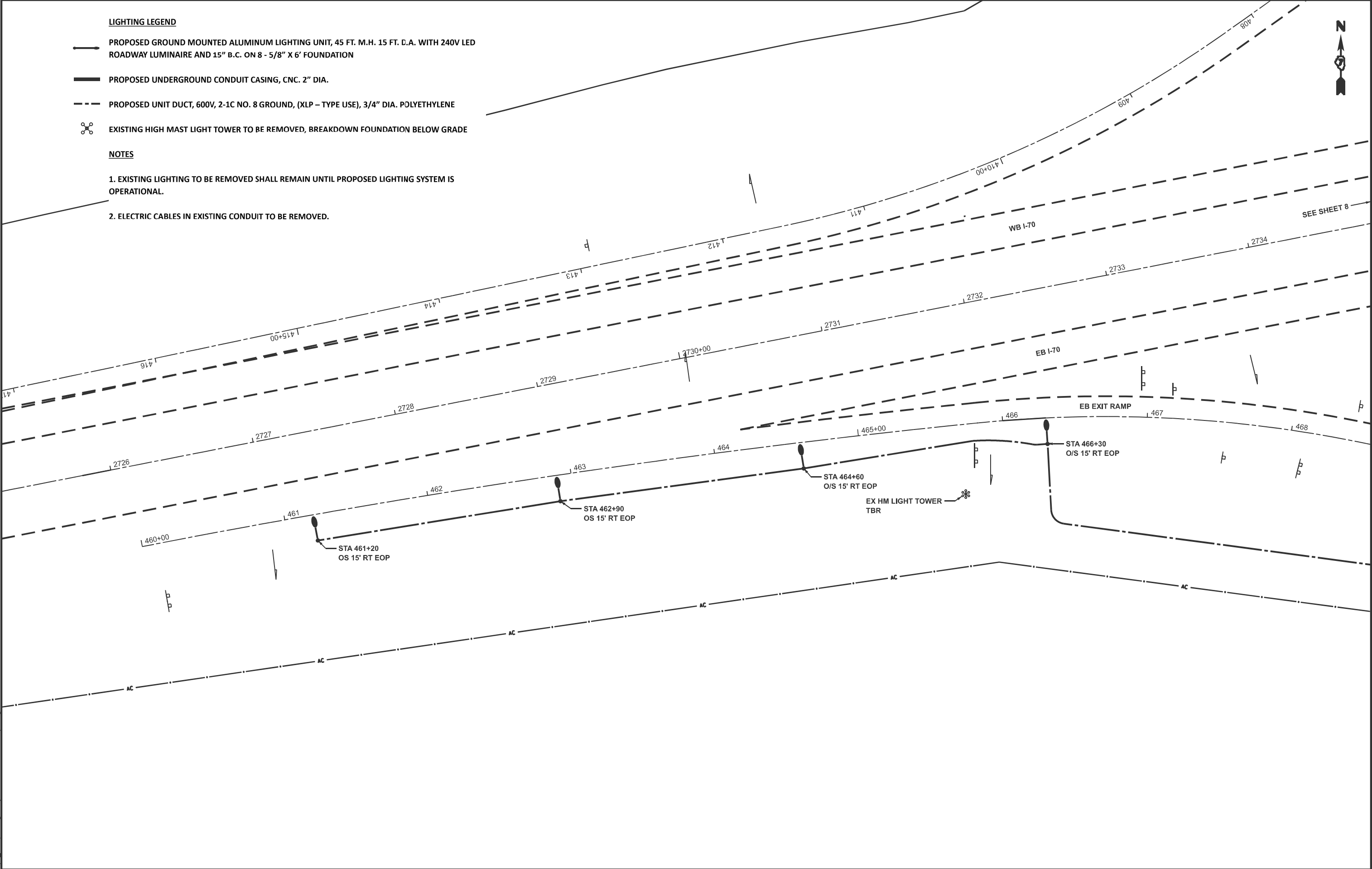
F.A.I RTE.	SECTION	COUNTY	TOTAL SHEETS	SHEET NO.
70	D7.HIGHWAY LIGHTING 2025-1	EFFINGHAM	9	6
CONTRACT NO. 74D37				
ILLINOIS FED.AID PROJECT				

LIGHTING LEGEND

-  PROPOSED GROUND MOUNTED ALUMINUM LIGHTING UNIT, 45 FT. M.H. 15 FT. D.A. WITH 240V LED ROADWAY LUMINAIRE AND 15" B.C. ON 8 - 5/8" X 6' FOUNDATION
-  PROPOSED UNDERGROUND CONDUIT CASING, CNC. 2" DIA.
-  PROPOSED UNIT DUCT, 600V, 2-1C NO. 8 GROUND, (XLP - TYPE USE), 3/4" DIA. POLYETHYLENE
-  EXISTING HIGH MAST LIGHT TOWER TO BE REMOVED, BREAKDOWN FOUNDATION BELOW GRADE

NOTES

1. EXISTING LIGHTING TO BE REMOVED SHALL REMAIN UNTIL PROPOSED LIGHTING SYSTEM IS OPERATIONAL.
2. ELECTRIC CABLES IN EXISTING CONDUIT TO BE REMOVED.



MODEL: Ramp D [Sheet]
FILE NAME: c:\p\work\wktol\greuel\fd1034628\0774037-shl-dan.dgn

USER NAME	= robert.greuel	DESIGNED	-	REVISED	-
		DRAWN	-	REVISED	-
		CHECKED	-	REVISED	-
PLOT DATE	= 11/20/2025	DATE	-	REVISED	-

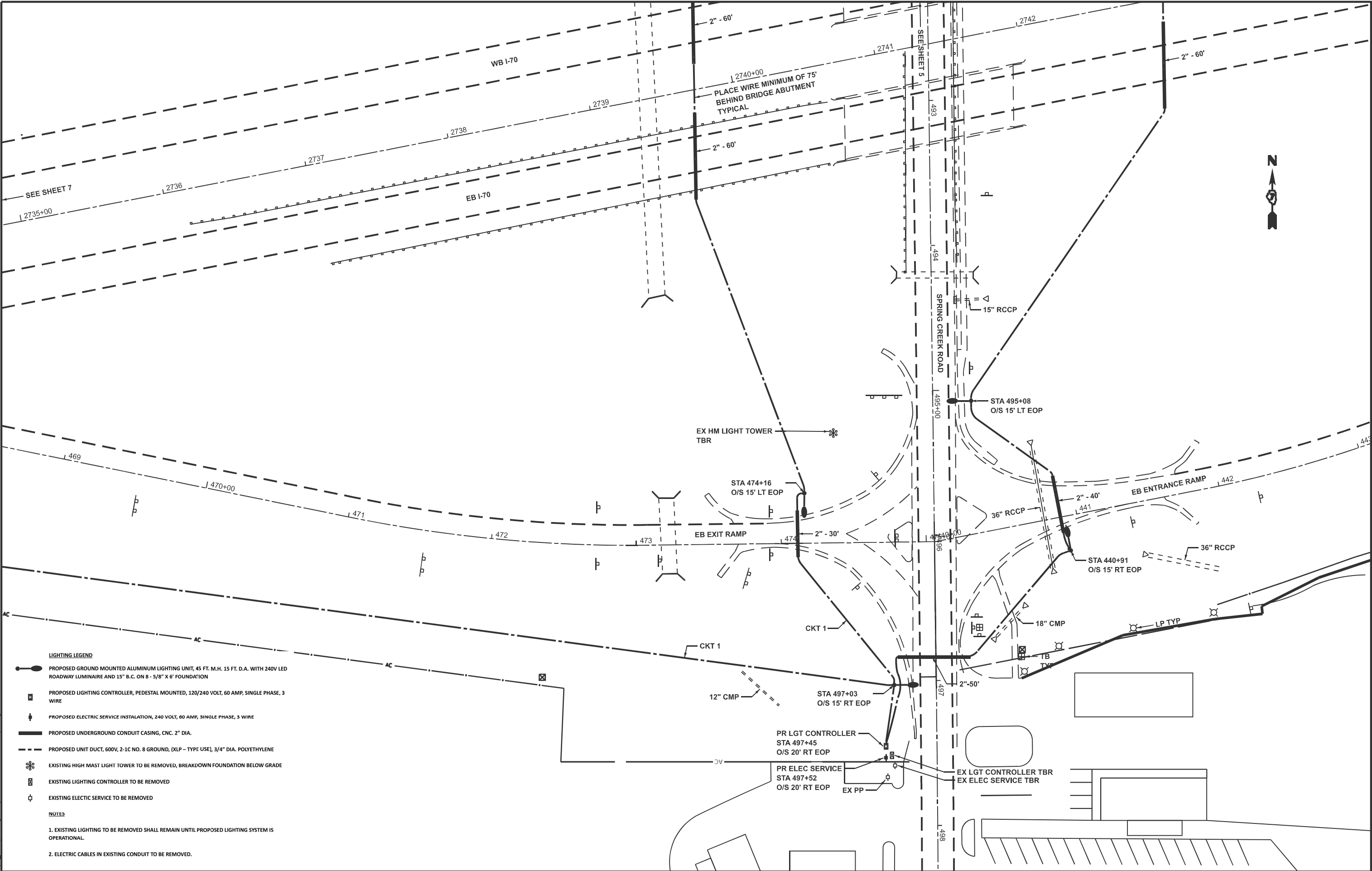
STATE OF ILLINOIS
DEPARTMENT OF TRANSPORTATION

LIGHTING PLAN SHEET

SCALE: SHEET 4 OF 5 SHEETS STA. TO STA.

F.A.I RTE.	SECTION	COUNTY	TOTAL SHEETS	SHEET NO.
70	D7.HIGHWAY LIGHTING 2025-1	EFFINGHAM	9	7
CONTRACT NO. 74D37				
ILLINOIS FED.AID PROJECT				

MODEL: Ramp D Intersection [Sheet]
FILE NAME: c:\pwworking\drawings\1034628\074D37-shd-dan.dgn



USER NAME	= robert.greuel	DESIGNED	-	REVISED	-
		DRAWN	-	REVISED	-
		CHECKED	-	REVISED	-
PLOT DATE	= 11/20/2025	DATE	-	REVISED	-

STATE OF ILLINOIS DEPARTMENT OF TRANSPORTATION		LIGHTING PLAN SHEET	

SCALE:	SHEET 5	OF 5	SHEETS	STA.	TO STA.
--------	---------	------	--------	------	---------

F.A.I RTE.	SECTION	COUNTY	TOTAL SHEETS	SHEET NO.
70	D7 HIGHWAY LIGHTING 2025-1	EFFINGHAM	9	8
CONTRACT NO. 74D37				
ILLINOIS FED. AID PROJECT				

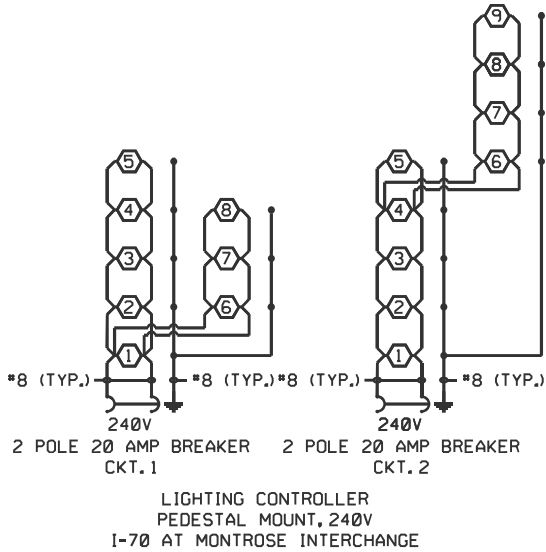
MODEL: Wiring Diagram [Sheet]
FILE NAME: c:\paw_work\paw\stl\effingham\41034628\0714D37-sht-details.dgn

NOTES:

1. ALL NECESSARY REVISIONS TO THE WIRING SHOWN ON THIS SHEET SHALL BE MADE AT NO ADDITIONAL COST TO THE DEPARTMENT AND TO THE SATISFACTION OF THE ENGINEER.

○ PROPOSED ROADWAY LUMINAIRE

⬇ GROUND ROD



Illinois Department
of Transportation

Luminaire Performance Table

Project

Date	Contract Number	Section Number	County
11/19/25	74D37	D7 HWY LTG 2025-1	Effingham

Marked Route Number	Municipality
I-70	MONTROSE

Roadway

Lane Width (see note 4)	Number and Direction of Lanes	Median Width	Surface Classification	Q-Zero Value
12 ft	3	N/A	R3	0.07

Structure

Mounting Height	Arm Length	Set-Back (see note 1)	Number of Luminaries
45 ft	15 ft	15 ft	N/A

Luminaire

Description	Transverse Distribution	Lateral Distribution
LED, ROADWAY, DESIGNATION G	TYPE 3	Medium

Total Light Loss Factor (LLF)	B-U-G Rating	Shields	Dimming Protocol
Refer to Notes 6 and 7	U=0	NONE	0-10V

Layout

Spacing	Configuration
170 ft	Single Sided

Performance (see notes 5 and 6)

Average Illuminance, E _{AVE} (fc)	Uniformity Ratio, E _{AVE} /E _{MIN}
> or = 0.7	< or = 3.0:1

Average Luminance, L _{AVE} (cd/m ²)	Uniformity Ratio, L _{AVE} /E _{MIN}	Uniformity Ratio, L _{MAX} /E _{MIN}	Veiling Luminance Ratio, L _V /L _{AVE}
> or = 0.6	< or = 3.0:1	< or = 6.0:1	< or = 0.3:1

Light Trespass (see notes 5 and 7)

Distance to ROW (behind pole)	Max. Horizontal Illuminance at ROW, E _H	Max. Vertical Illuminance at ROW, E _V
N/A	N/A	N/A

Notes

- Set-Back is from Edge of Pavement (white line).
- Lighting calculations shall be performed with all luminaires oriented toward and perpendicular to the roadway.
- Performance requirements shall be the minimum acceptable standards of photometric performance for the luminaire, based on the given conditions listed above.
- Lane width is the width of each individual lane, not to be confused with total roadway width.
- Compliance with performance criteria shall be held to one significant digit.
- Photometric calculations for roadways shall be performed with a total light loss factor of 0.7
- Light trespass calculations shall be performed with a total light loss factor of 1.0 and with horizontal calculations performed at grade and vertical calculations performed with calculation points located three feet above grade.
- Luminaire performance table is intended to define the luminaire and does not necessarily match any specific roadway geometry, mounting height, setback, or arm length.

Printed 11/19/25

BDE 5630 (Rev. 06/06/24)

	USER NAME = Mona.Steffen	DESIGNED -	REVISED -	STATE OF ILLINOIS DEPARTMENT OF TRANSPORTATION	WIRING DIAGRAM AND LUMINAIRE PERFORMANCE TABLE			F.A.I RTE.	SECTION	COUNTY	TOTAL SHEETS	SHEET NO.
		DRAWN -	REVISED -					70	D7.HIGHWAY LIGHTING 2025-1	EFFINGHAM	9	9
		CHECKED -	REVISED -					CONTRACT NO. 74D37				
	PLOT DATE = 11/20/2025	DATE -	REVISED -					ILLINOIS FED.AID PROJECT				
SCALE:		SHEET 1	OF 1	SHEETS	STA.	TO STA.						