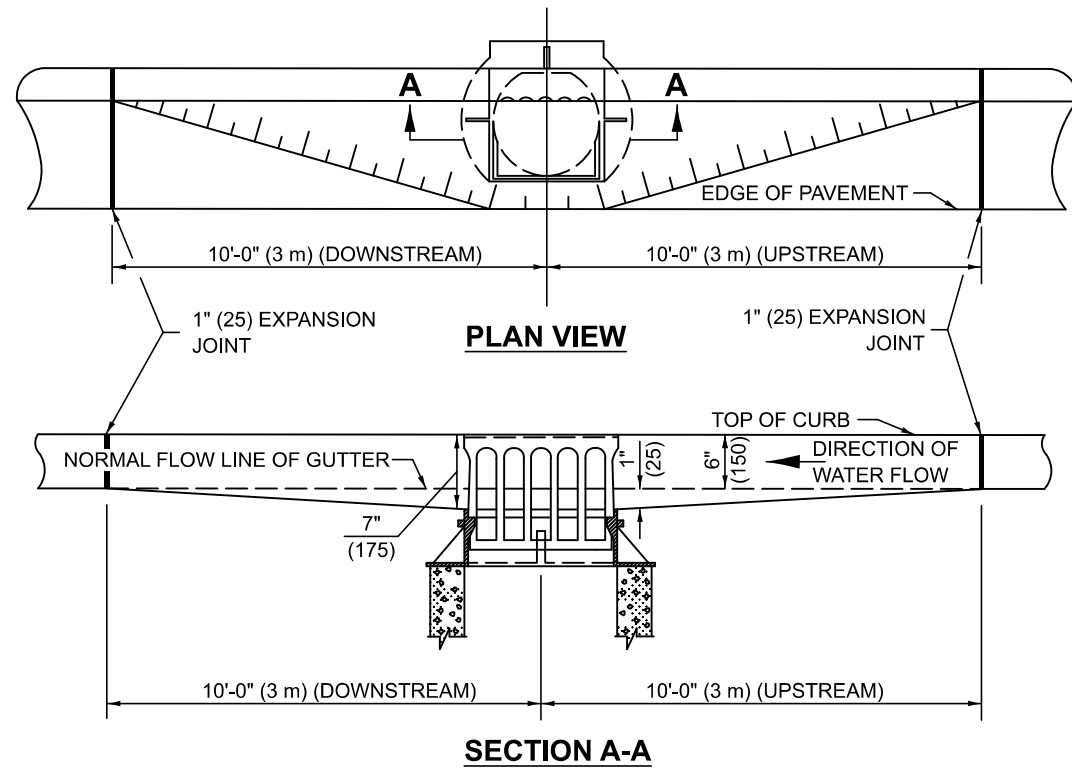
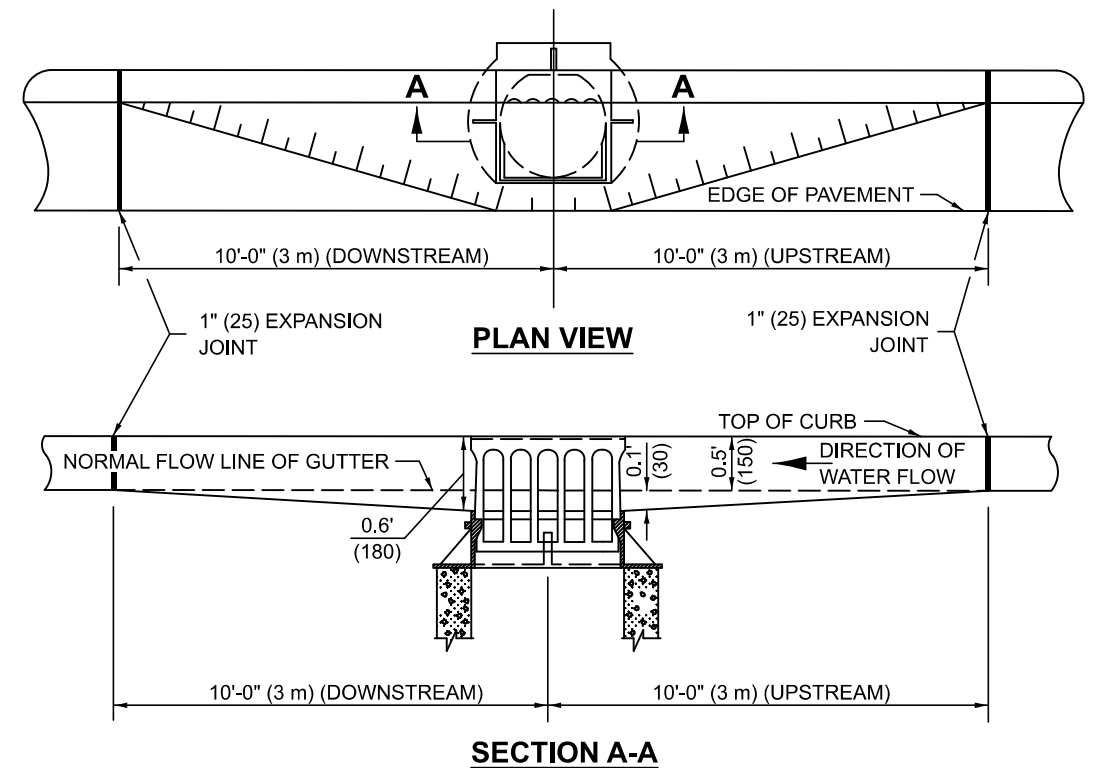


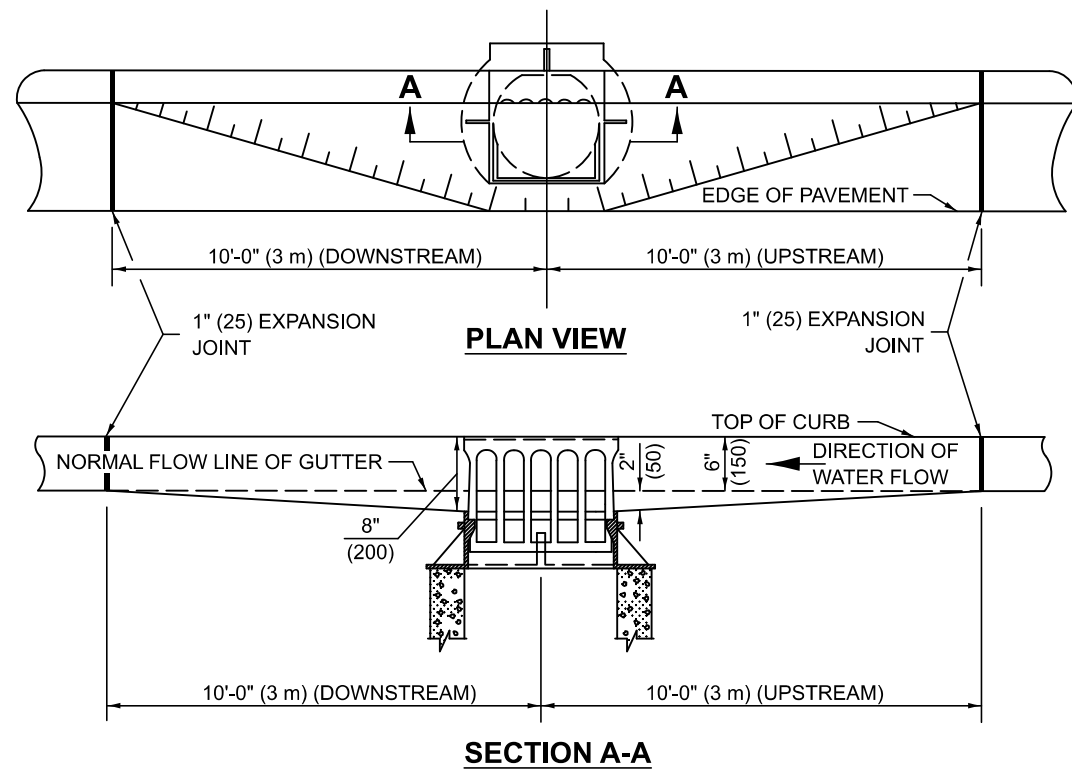
GUTTER DEPRESSION 1" (25mm)



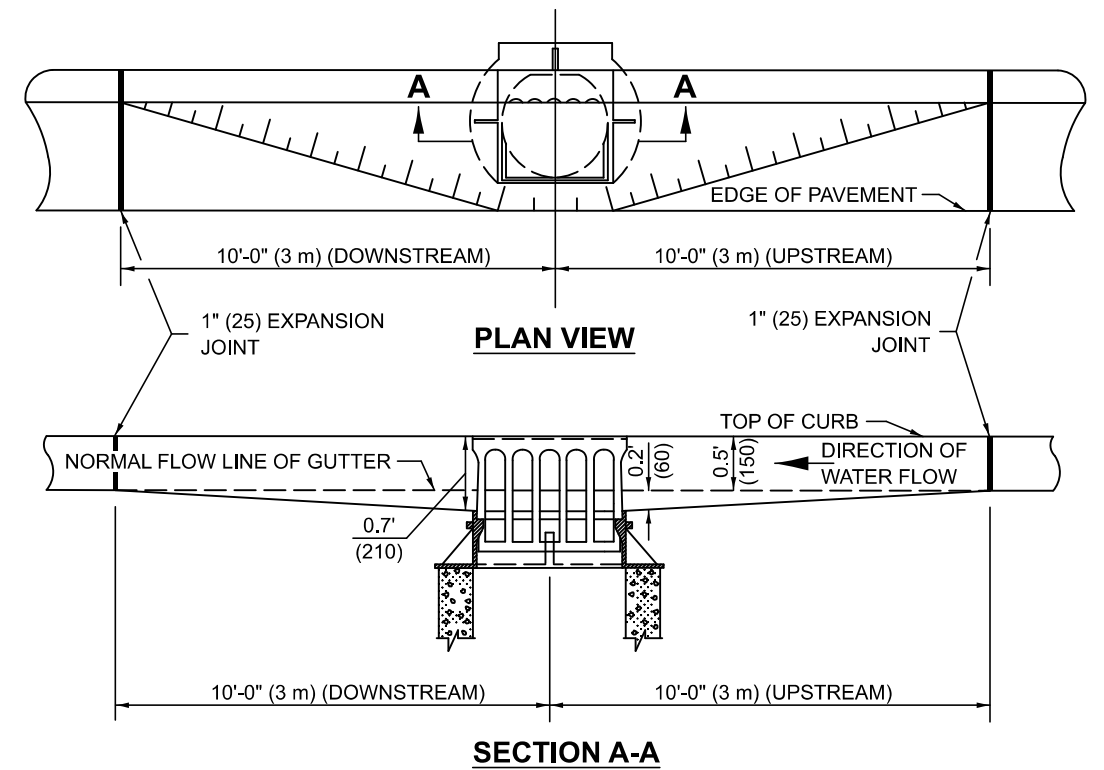
GUTTER DEPRESSION 0.1 FOOT (30mm)



GUTTER DEPRESSION 2" (50mm)



GUTTER DEPRESSION 0.2 FOOT (60mm)



GENERAL NOTES

1. THE TWO EXPANSION JOINTS SHALL BE PLACED AS SHOWN IN STANDARD 606001.
2. THE GUTTER GRADE SHALL BE DEPRESSED AT ALL INLETS, CATCH BASINS AND MANHOLES UNLESS OTHERWISE SPECIFIED IN THE PLANS.
3. THE COST OF THIS WORK SHALL BE INCLUDED IN THE COST OF THE VARIOUS PAY ITEMS OF WORK INVOLVED.

Note: All dimensions are in INCHES (millimeters) unless otherwise shown.

DISTRICT 5 DETAIL NO. 606AAAAA

F.A. RTE.	SECTION	COUNTY	TOTAL SHEETS	SHEET NO.
CONTRACT NO.				

STATE OF ILLINOIS
DEPARTMENT OF TRANSPORTATION

GUTTER DEPRESSION AT INLETS, CATCH BASINS AND MANHOLES

SCALE: SHEET 1 OF 1 SHEETS STA. TO STA.

USER NAME = Eric.Thomas	DESIGNED -	REVISED - 11/06
PLOT SCALE = \$\$SCALE\$	DRAWN -	REVISED -
PLOT DATE = 12/7/2022	CHECKED -	REVISED -
	DATE -	REVISED -