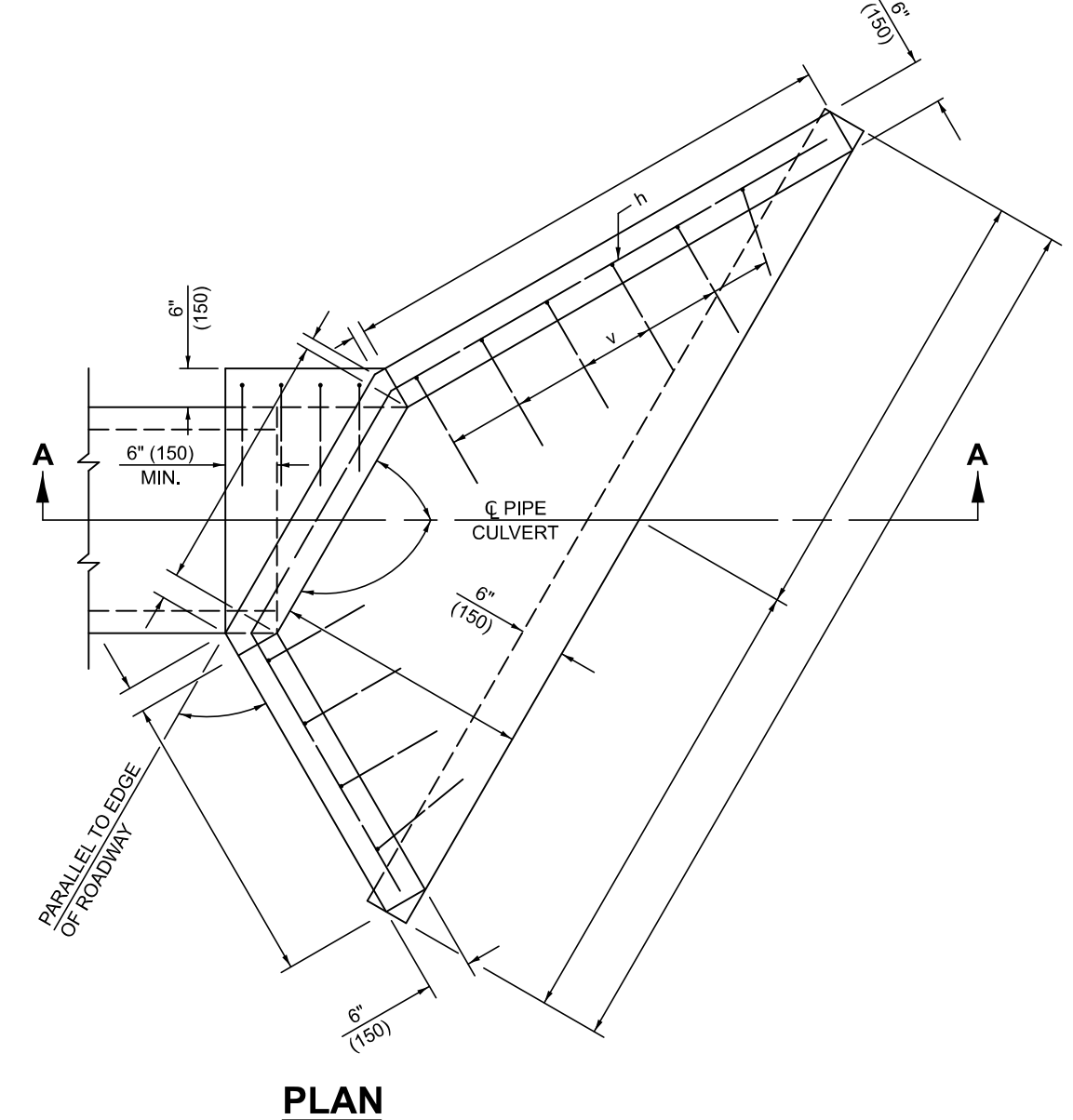
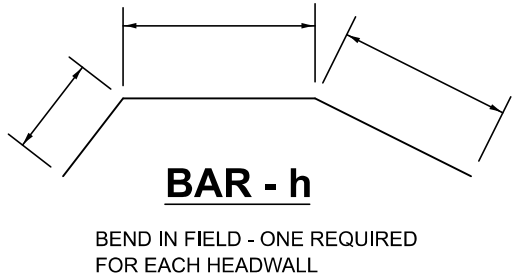


SECTION A-A

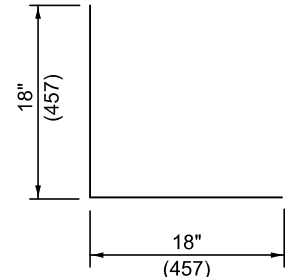
END VIEW



PLAN



BAR - h



BAR - v

BILL OF MATERIALS

BAR	NO.	SIZE	LENGTH FT. (m)
h		#4 (#10)	
v		#4 (#10)	
CLASS SI CONCRETE HEADWALLS		CU. YDS. (m ³)	
REINFORCEMENT BARS		POUNDS (kg)	

ITEM	UNIT	QUANTITY
CAST-IN-PLACE REINFORCED CONCRETE END SECTIONS	EACH	

NOTE: CLASS SI CONCRETE SHALL BE USED THROUGHOUT. BUILD TOPS OF HEADWALLS PARALLEL TO GRADE LINE.

STATION _____

Note: All dimensions are in INCHES (millimeters) unless otherwise shown.

DISTRICT 5 DETAIL NO. 542AAAAA

**STATE OF ILLINOIS
DEPARTMENT OF TRANSPORTATION**

REINFORCED CONCRETE END SECTIONS (SKEWED ELLIPTICAL)

USER NAME = Eric.Thomas	DESIGNED -	REVISED - 12/06
PLOT SCALE = \$\$CALE\$	DRAWN -	REVISED -
PLOT DATE = 12/7/2022	CHECKED -	REVISED -
	DATE -	REVISED -

SCALE: SHEET 1 OF 1 SHEETS STA. TO STA.

F.A. RTE.	SECTION	COUNTY	TOTAL SHEETS	SHEET NO.
CONTRACT NO.				
ILLINOIS FED. AID PROJECT				

MODEL: SHT_PLAN
FILE NAME: C:\Bentley\CONNECT1011\Organization\ChilIDOT_Standards\CellIDOT_Sheets.cad