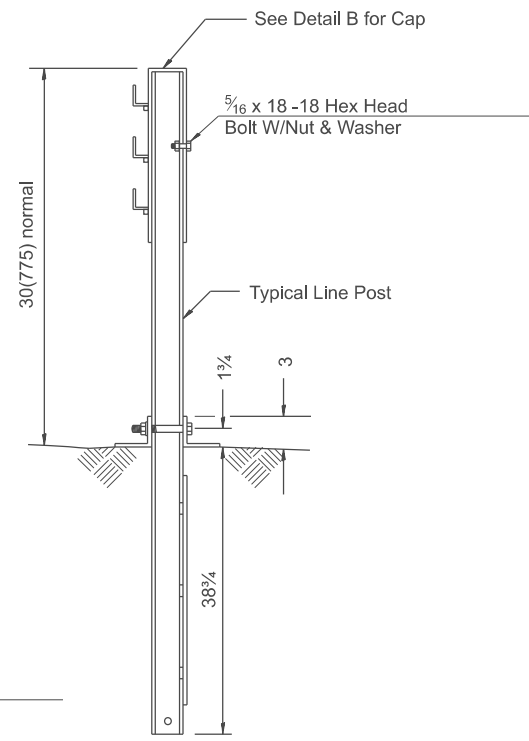
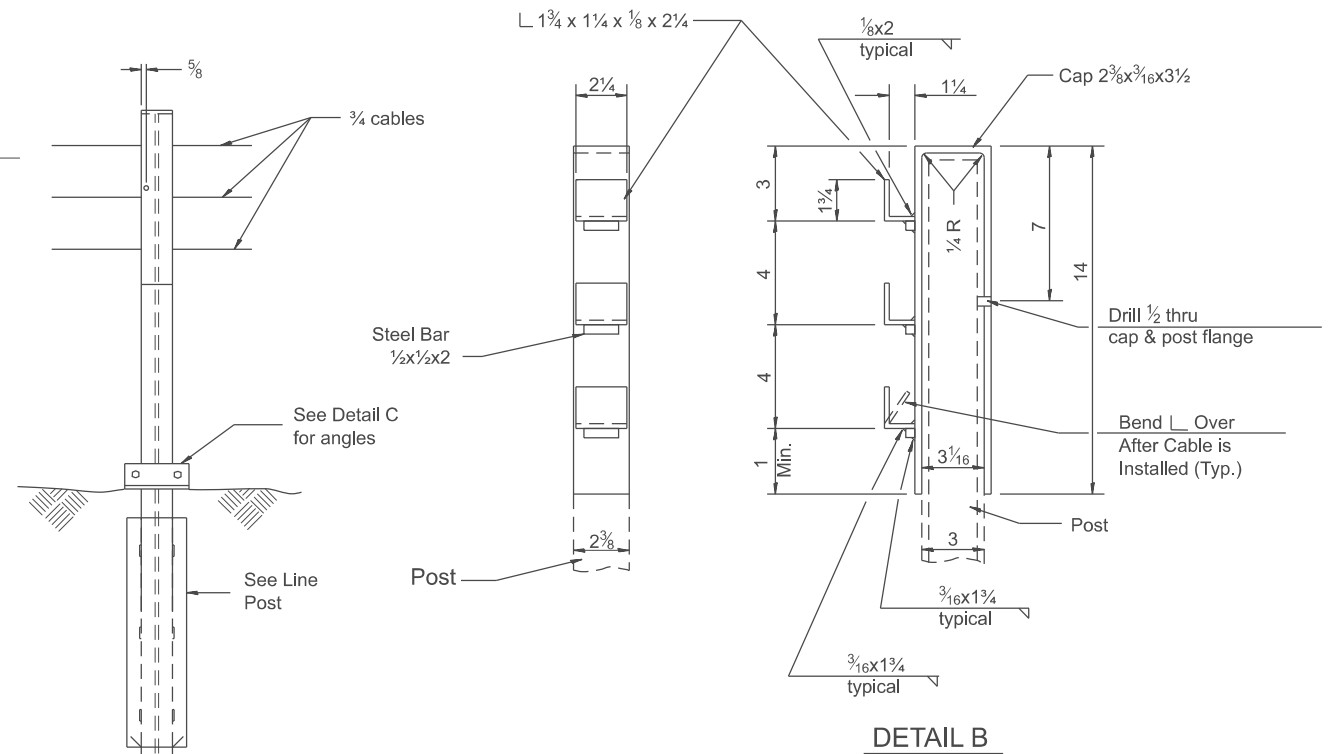


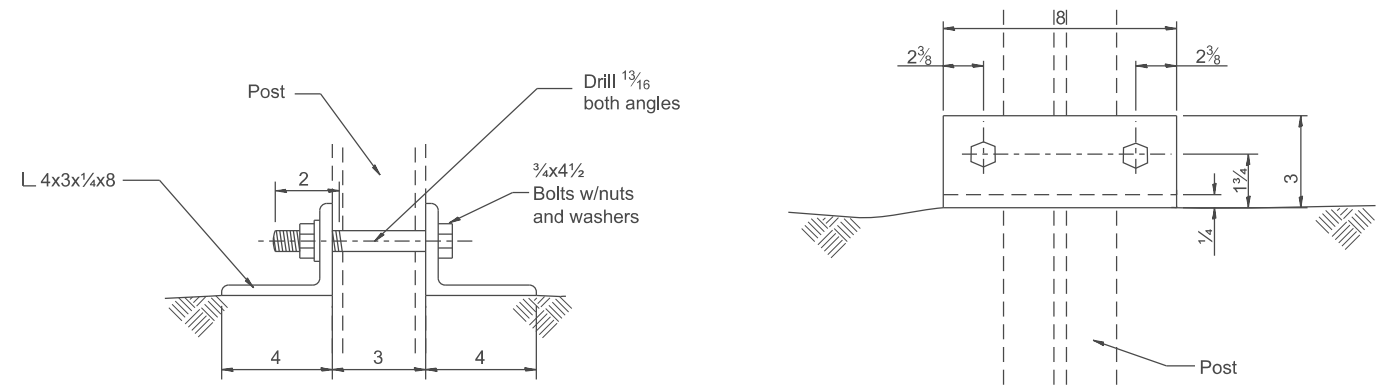
LINE POST DETAIL



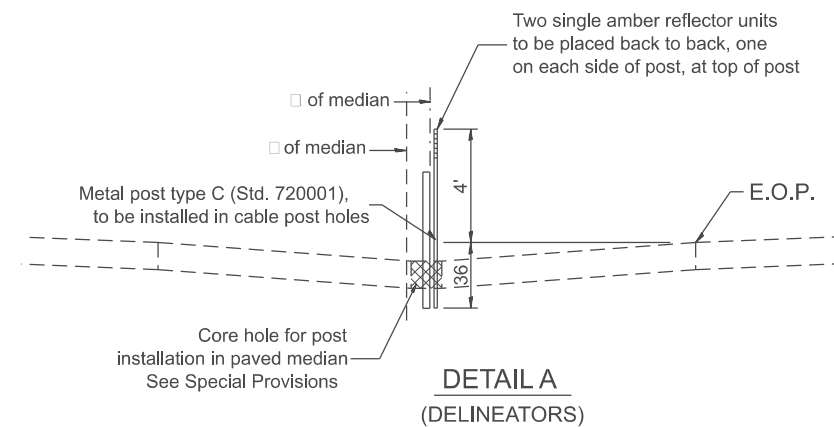
END POST DETAIL



DETAIL B



DETAIL C



DETAIL A (DELINEATORS)

NOTES

- At all locations where the cable is connected to a cable socket with a wedge type connection, one wire of the wire rope shall be crimped over the base of the wedge to hold it firmly in place.
- Compensating devices shall have spring constants of 450 lbs/in, plus or minus 50 lbs/in, and permit a travel of 5, plus or minus 1.
- Socket baskets shall be designed for use with the wedge detailed in these Standards.
- Alternate hardware designs will be considered for approval provided their connection details, for the purpose of maintenance substitutions, are compatible with the details of these standards and their operating characteristics are similar to those of the hardware shown.
- Threads of externally threaded parts shall be UNC, Class 2A tolerance (A.N.S.I. B1.1). Internally threaded parts shall meet the dimensional requirements of ASTM A 563.
- All fittings (including spicer) shall be so designed to use the wedge shown in the wedge detail and shall be of such section as to develop the full strength of the 3/4 round cable 25,000 lbs.
- For arrangement of spring cable end assemblies (compensating devices) and turnbuckle cable end assemblies, the following criteria shall apply:

Length of Cable Runs

To 1000' - Use compensating cable end assembly on one end, and turnbuckle cable end assembly on the other end of each individual cable.
 Over 1000' to 2000' - Use compensating cable end assembly on each end of each individual cable.

- All assembly parts and posts are to be galvanized and no punching, cutting or welding will be permitted after galvanizing.
- Dimensional tolerances not shown or implied are intended to be those consistent with the proper functioning of the part, including its appearance, and accepted manufacturing practices.
- Prior to final acceptance by the State the following procedures shall be used to tighten the turnbuckles, depending on the temperature at the time of adjustment in accordance with the following table.

Temperature	120°	99°	79°	59°	39°	19°	-1°
Degrees F°	to	to	to	to	to	to	to
	100°	80°	60°	40°	20°	0°	-20°

Spring Compression	1	1 1/2	2	2 1/2	3	3 1/2	4
from unloaded position							
in. in each spring							

All dimensions are in inches unless otherwise noted.

MODEL: SHT_PLAN
 FILE NAME: C:\Bentley\CONNECT1011\Organization\Chil\IDOT_Standards\Cable\IDOT_Sheets.dwg

USER NAME = Eric.Thomas	DESIGNED -	REVISED -
	DRAWN -	REVISED -
	CHECKED -	REVISED -
PLOT DATE = 12/7/2022	DATE -	REVISED -

STATE OF ILLINOIS
 DEPARTMENT OF TRANSPORTATION

(MEDIAN BARRIER) CABLE ROAD GUARD, THREE STRANDS

SCALE: NOT TO SCALE SHEET 2 OF 3 SHEETS STA. TO STA.

F.A. RTE.	SECTION	COUNTY	TOTAL SHEETS	SHEET NO.
DISTRICT 4 DETAIL NO. 636001		CONTRACT NO.		
ILLINOIS FED. AID PROJECT				