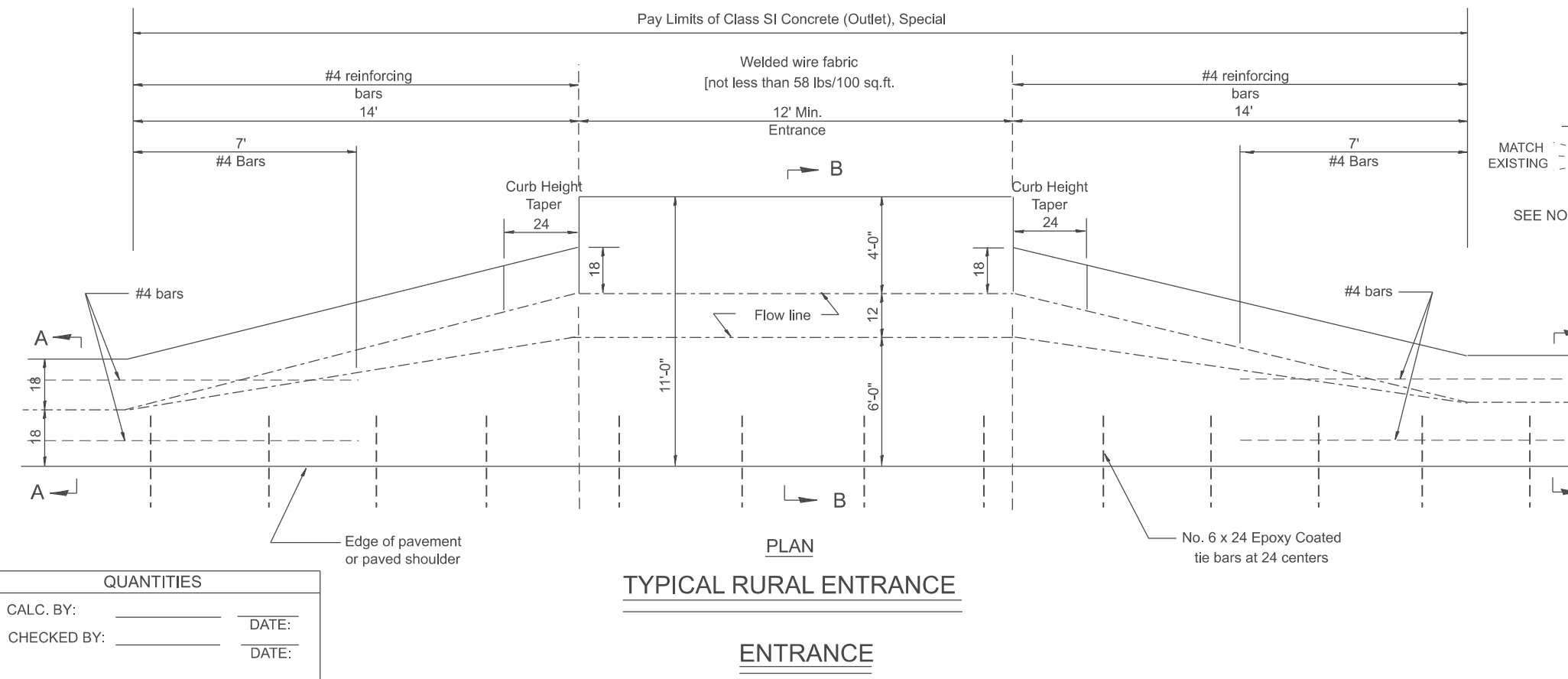
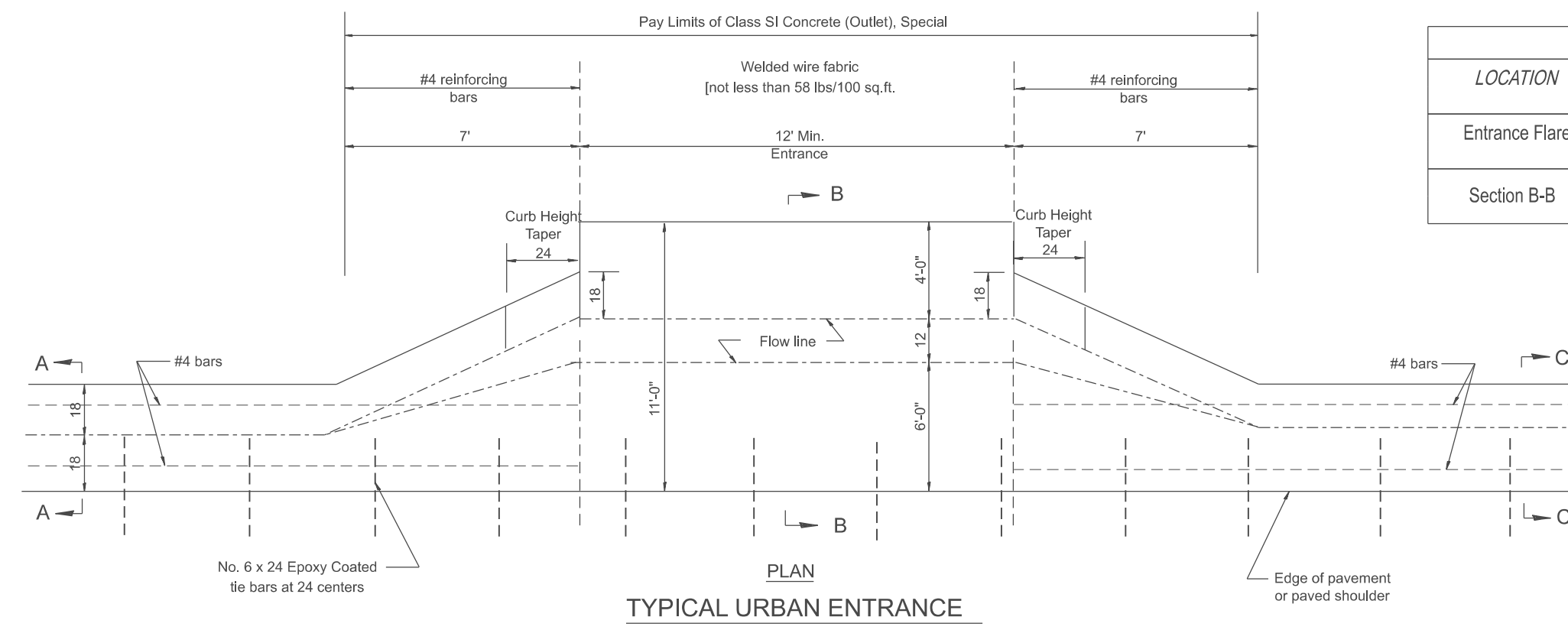
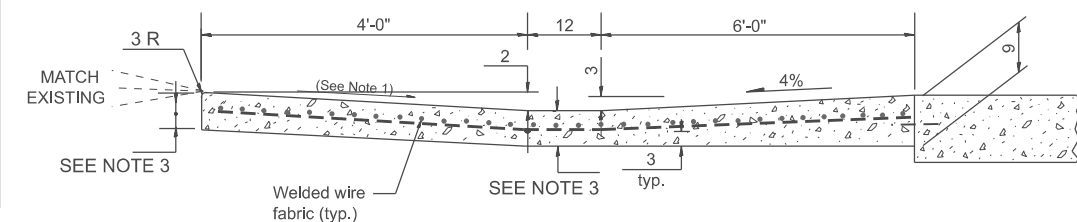
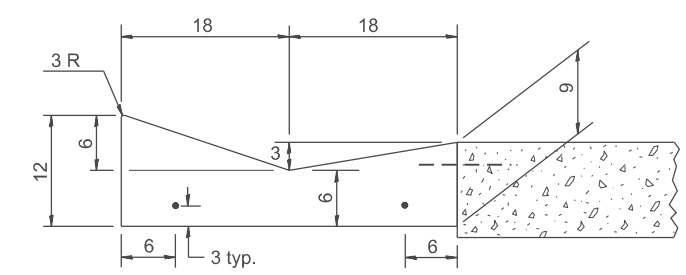


MODEL: SHT_PLAN
FILE NAME: C:\Bentley\CONNECT1011\Organization\Chil\IDOT_Standards\Civil\IDOT_Sheets.cad



QUANTITIES	
CALC. BY:	DATE:
CHECKED BY:	DATE:
QUANTITY CALCULATIONS ARE ON FILE AT THE DISTRICT 4 OFFICE; BUREAU OF PROJECT IMPLEMENTATION; DOCUMENTATION SECTION	

QUANTITY CALCULATION			
LOCATION	LENGTH	NON-COMMERCIAL	COMMERCIAL ENTRANCE
Entrance Flare	7 Ft Urban 14 Ft Rural	0.15 Cu Yd / Ft	0.18 Cu Yd / Ft
Section B-B	See Plans	0.23 Cu Yd / Ft	0.28 Cu Yd / Ft



- GENERAL NOTES
- Slope may be increased from 4% (min.) to 6% (max.) in order to match the existing.
 - The cross-slope is to be constructed as given in the plans from back turnout to where driveway matches existing.
 - For Non-Commercial Entrances the driveway thickness shall be 6. For Commercial Entrances the driveway thickness shall be 8.

All dimensions are in inches unless otherwise noted.

USER NAME = Eric.Thomas	DESIGNED -	REVISED -
	DRAWN -	REVISED -
	CHECKED -	REVISED -
PLOT DATE = 12/7/2022	DATE -	REVISED -

STATE OF ILLINOIS
DEPARTMENT OF TRANSPORTATION

CONCRETE GUTTER, TYPE A, (SPECIAL)
(INLET, OUTLET & ENTRANCE)

SCALE: NOT TO SCALE SHEET 3 OF 3 SHEETS STA. TO STA.

F.A. RTE.	SECTION	COUNTY	TOTAL SHEETS	SHEET NO.
DISTRICT 4 DETAIL NO. 606101		CONTRACT NO.		
ILLINOIS FED. AID PROJECT				