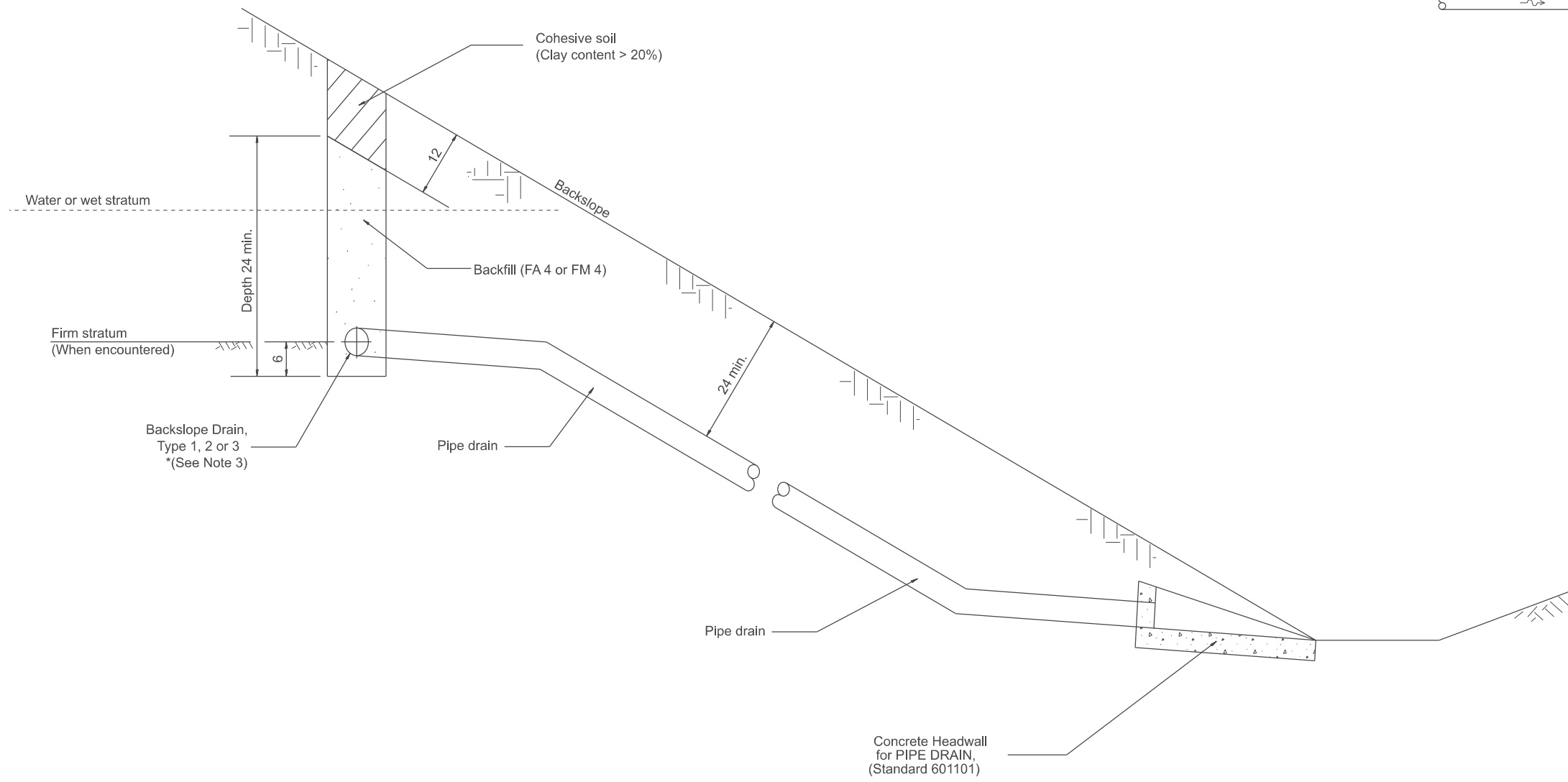
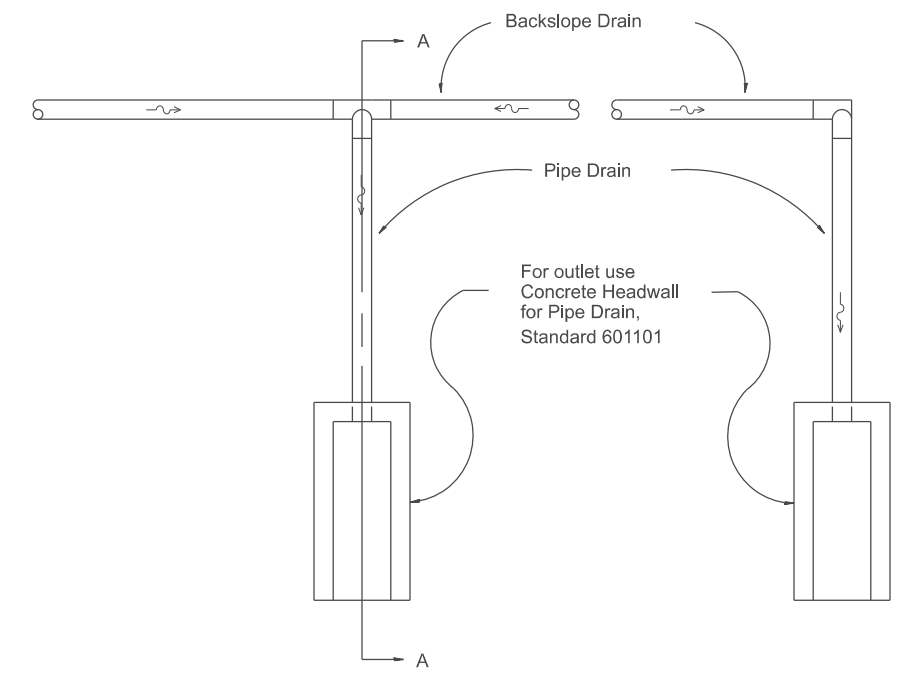


DESIGNER NOTES:
 1. LOCATION AND SIZES OF BACKSLOPE DRAINS DEFINED IN GEOTECHNICAL REPORT OR BY THE GEOTECHNICAL ENGINEER
 2. GENERAL GUIDES FOR SIZES: OVER 500': USE 6, UNDER 500': USE 4
 3. INCLUDE STANDARD 601101 FOR "CONCRETE HEADWALL FOR PIPE DRAIN".
 4. INCLUDE DISTRICT SPECIAL PROVISIONS.
 5. PVC OR POLYETHYLENE PIPE MATERIALS ARE PREFERRED DUE TO THE CORROSION OF METAL PIPES. CONSIDER REQUIRING THESE MATERIALS AS PART OF THE PLAN DETAILS OR SPECIAL PROVISIONS.
 6. DELETE DESIGNER NOTES WHEN INSERTING INTO PLAN FILES.

MODEL: SHT_PLAN.dwg
 FILE NAME: C:\Bentley\CONNECT1010\organization\Chilidiot_Standards\Civil\DOT_Sheets.dwg



SECTION A-A



PLAN

GENERAL NOTES:

1. The District Geotechnical Engineer will determine the Backslope Drain design, after the backslope has been constructed.
2. This work shall be done in accordance with the applicable portion of Articles 601 and 207 of the Standard Specifications and the District Special Provision for "Pipe Underdrain".
3. * See plans for "Type".

All dimensions are in inches unless otherwise noted.

| | | |
|-------------------------|------------|-----------|
| USER NAME = Eric.Thomas | DESIGNED - | REVISED - |
| | DRAWN - | REVISED - |
| | CHECKED - | REVISED - |
| PLOT DATE = 12/7/2022 | DATE - | REVISED - |

**STATE OF ILLINOIS
 DEPARTMENT OF TRANSPORTATION**

BACKSLOPE DRAINS

SCALE: NOT TO SCALE SHEET OF SHEETS STA. TO STA.

| | | | | |
|------------------------------|---------|--------------|--------------|-----------|
| F.A. RTE. | SECTION | COUNTY | TOTAL SHEETS | SHEET NO. |
| DISTRICT 4 DETAIL NO. 601201 | | CONTRACT NO. | | |
| ILLINOIS FED. AID PROJECT | | | | |