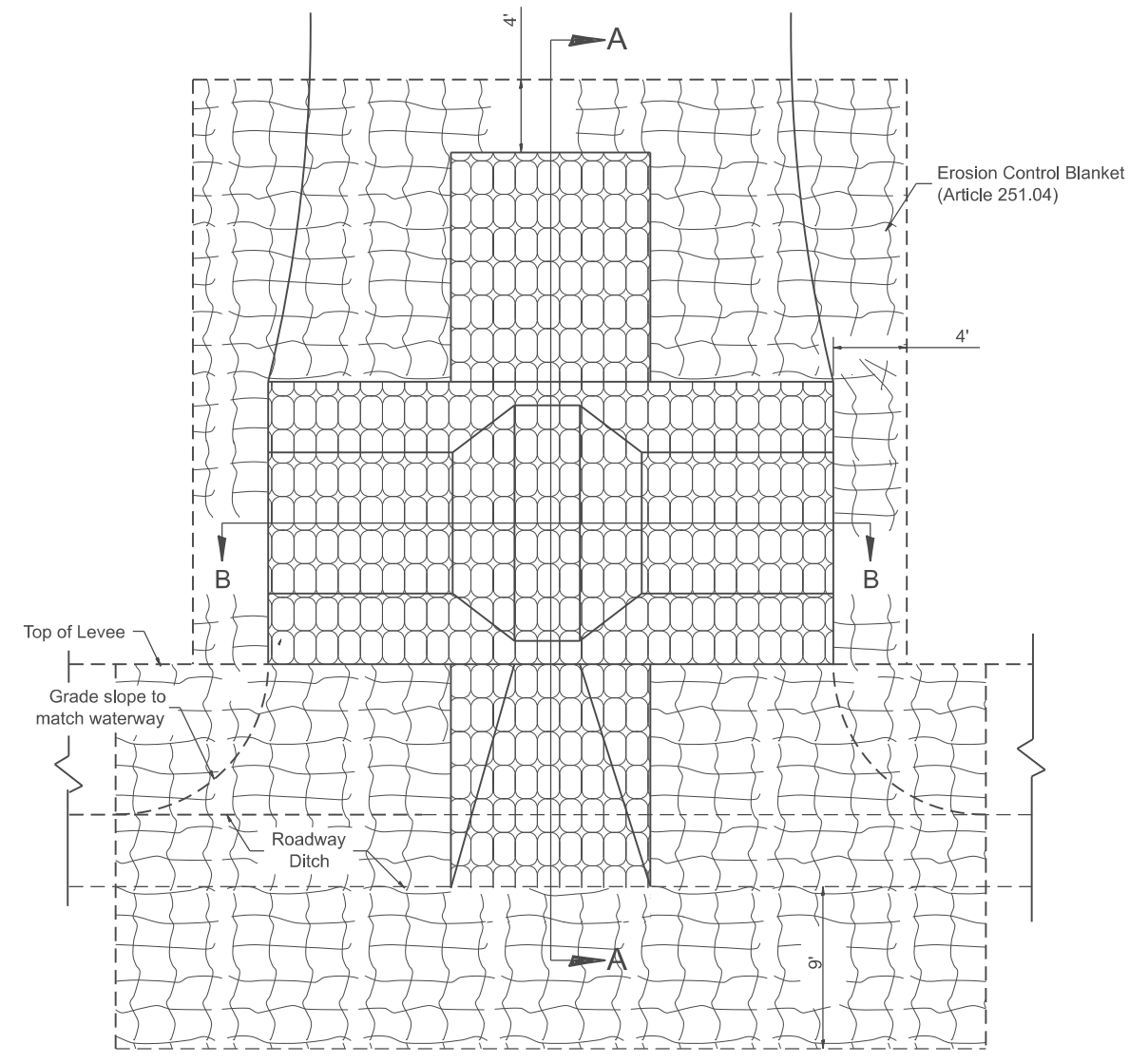
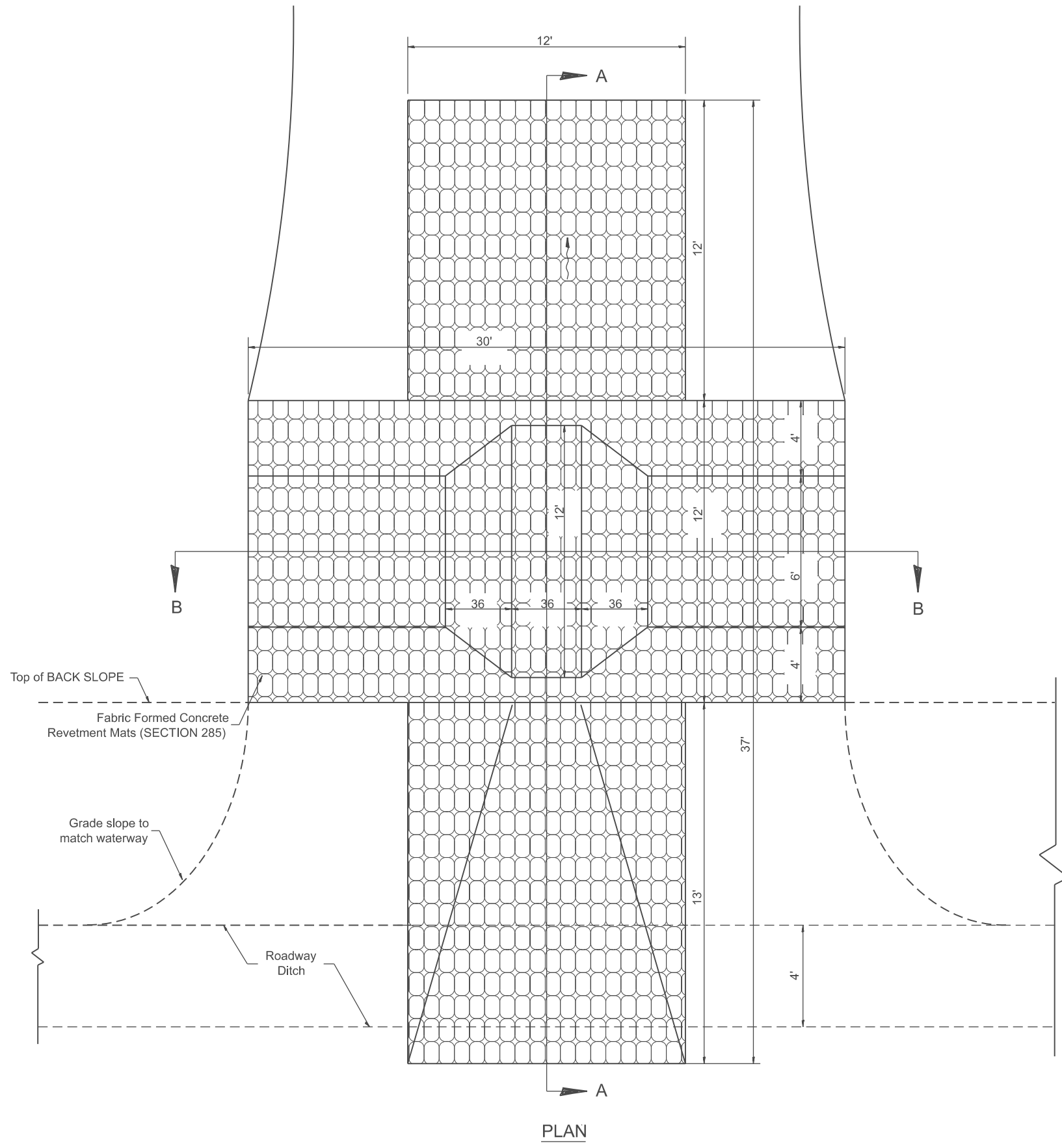


Designer Notes:

1. Designer to modify this Special Detail sheet, as needed, for inclusion in plans.
2. This treatment is recommended for large waterways; > 30' (9.0 m) in width.
3. Include District CADD Detail for Fabric Formed Concrete Revetment Mats.
4. Designer to add Drainage Structure Details as needed. The CULVERT flowline should be located such that CULVERT siltation is minimized.

MODEL: D4-285121-01  
 FILE NAME: c:\pwworking\illinois.gov\thomas.cox\illinois.gov\10559441\04-285121.dgn



**EROSION CONTROL BLANKET DETAILS**

**GENERAL NOTES**

1. Fabric Formed Concrete Revetment Mats shall conform to Section 285.
2. Erosion Control Blanket shall conform to Article 251.04.

All dimensions are in inches unless otherwise noted.

USER NAME = thomas.cox	DESIGNED -	REVISED -
	DRAWN -	REVISED -
	CHECKED -	REVISED -
PLOT DATE = 11/11/2024	DATE -	REVISED -

**STATE OF ILLINOIS  
 DEPARTMENT OF TRANSPORTATION**

**WATERWAY EROSION CONTROL, DOWNSTREAM TREATMENT,  
 FABRIC FORMED CONCRETE REVETMENT MATS**

SCALE: NOT TO SCALE SHEET 0001 OF 2 SHEETS STA. TO STA.

F.A. RTE.	SECTION	COUNTY	TOTAL SHEETS	SHEET NO.
				0
DISTRICT 4 DETAIL NO. 285121			CONTRACT NO.	
ILLINOIS FED. AID PROJECT				