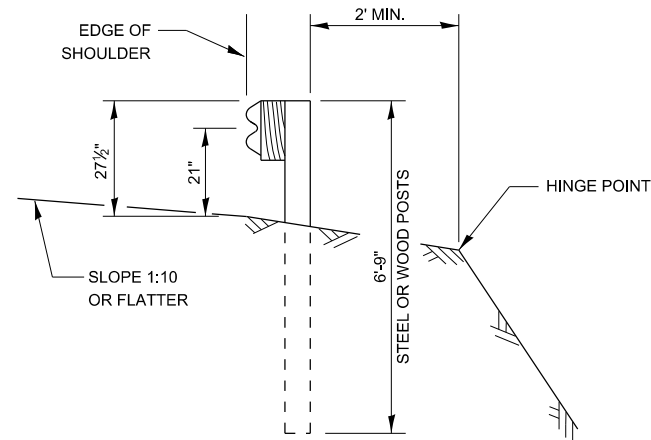


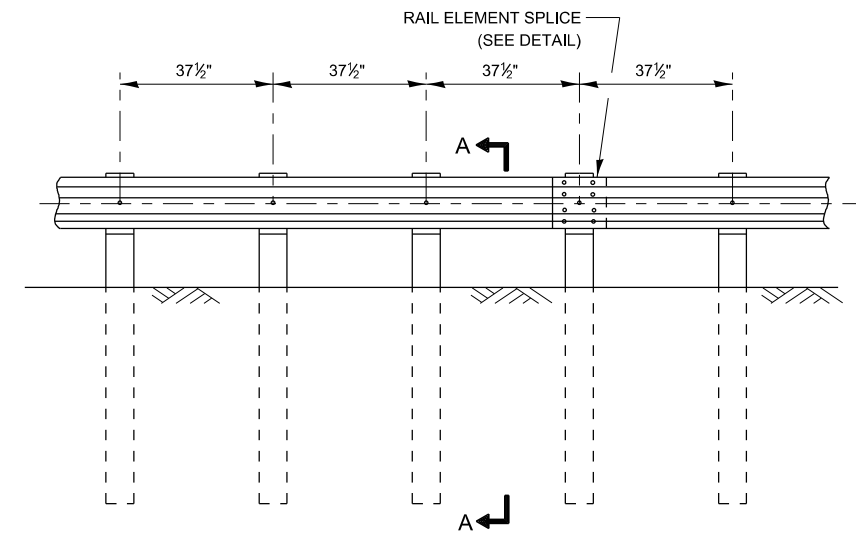
**ELEVATION**

**TYPE A**

6'-3" TYPICAL POST SPACING



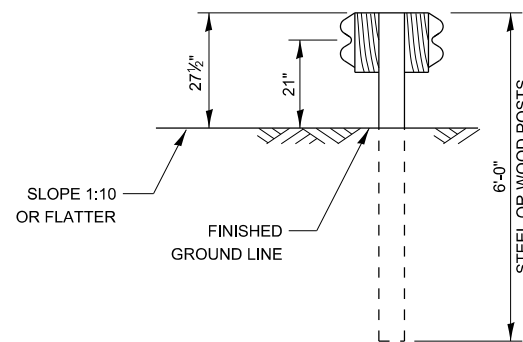
**SECTION A-A**



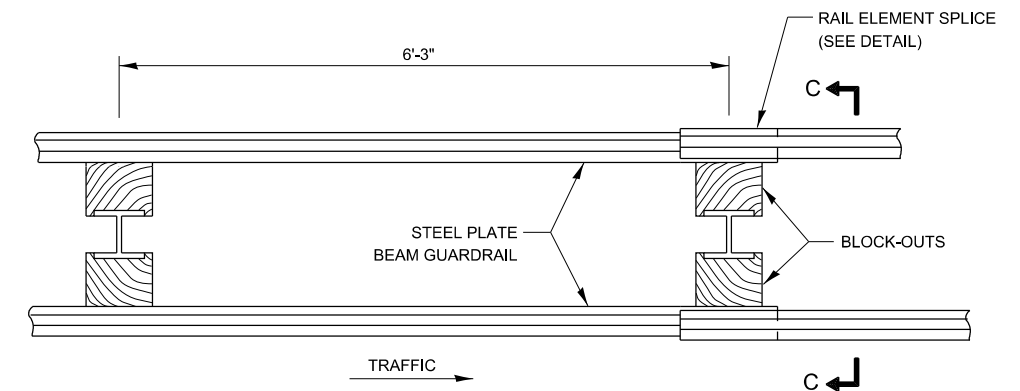
**ELEVATION**

**TYPE B**

37 1/2" CLOSED POST SPACING



**SECTION C-C**



**PLAN**

**TYPE D**

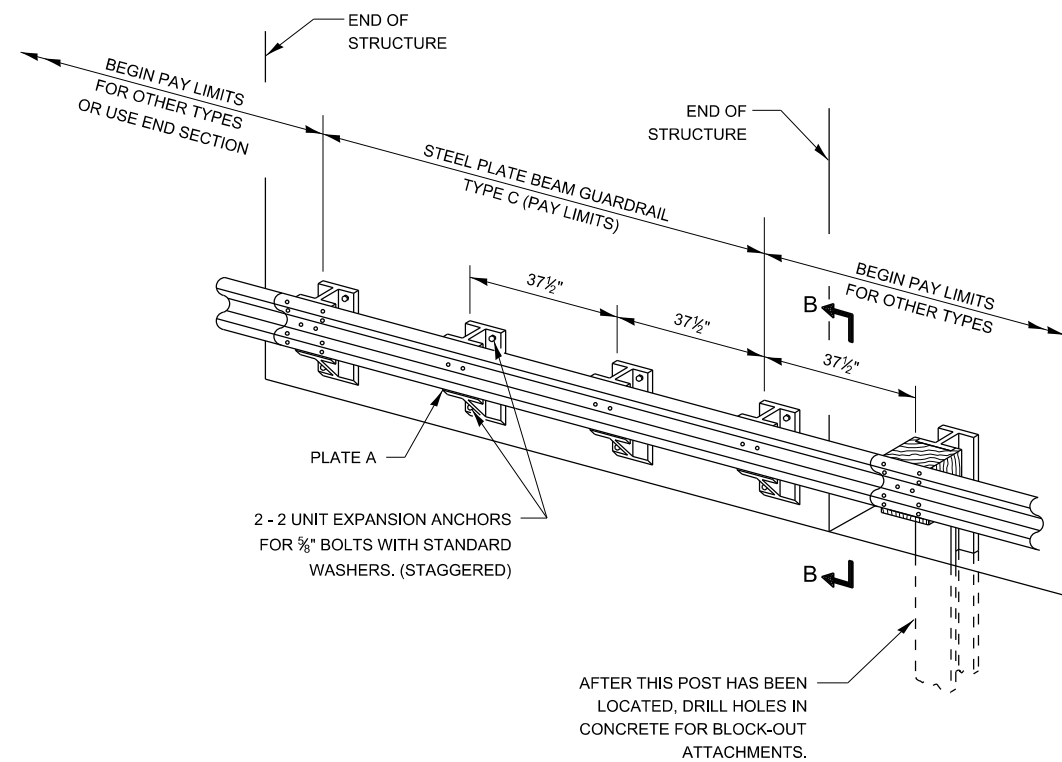
DOUBLE STEEL PLARE BEAM GUARDRAIL  
6'-3" TYPICAL POST SPACING

**GENERAL NOTES**

ALL SLOPE RATIOS ARE EXPRESSED AS UNITS OF VERTICAL DISPLACEMENT TO UNITS OF HORIZONTAL DISPLACEMENT (V:H).

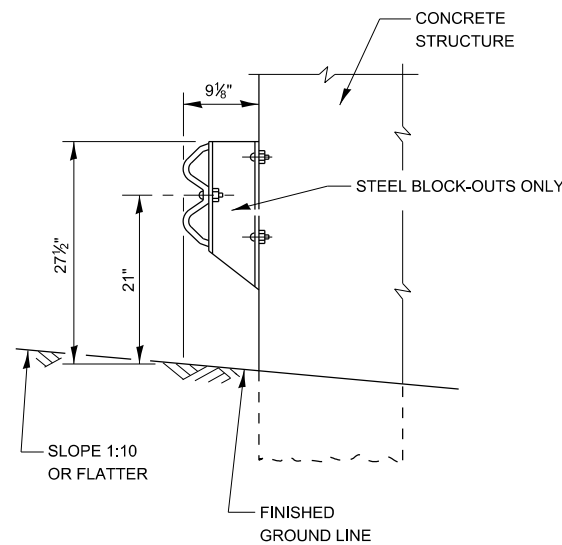
THE EXISTING STEEL POSTS MAY BE DRILLED TO MATCH THE BOLT PATTERN SHOWN HEREIN FOR THE WOOD BLOCK-OUTS, OR A NEW STEEL POST SHALL BE PROVIDED.

THIS DETAIL IS APPLICABLE TO THE GUARDRAIL SYSTEM USED PRIOR TO JANUARY 1, 2007. FOR DETAILS ON THE MIDWEST GUARDRAIL SYSTEM SEE STANDARD 630001.



**TYPE C**

37 1/2" BLOCK-OUT SPACING



**SECTION B-B**

STATE OF ILLINOIS  
DEPARTMENT OF TRANSPORTATION

REMOVE AND REERECT STEEL PLATE BEAM GUARDRAIL

SCALE: SHEET OF SHEETS STA. TO STA.

|                           |         |        |              |           |
|---------------------------|---------|--------|--------------|-----------|
| F.A. RTE.                 | SECTION | COUNTY | TOTAL SHEETS | SHEET NO. |
|                           |         |        |              |           |
| CONTRACT NO.              |         |        |              |           |
| ILLINOIS FED. AID PROJECT |         |        |              |           |

633-1A

MODEL: det 3.dwg  
FILE: \\paw.bentley.com\PIV\DOT\Documents\DOT\_Offices\Darcy\_Detall\Revisions\_2023\600-699\_INCIDENTAL\_CONSTRUCTION.dgn  
3/10/23 10:32:23 AM