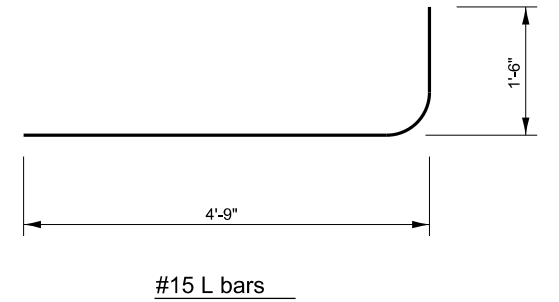
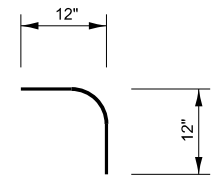


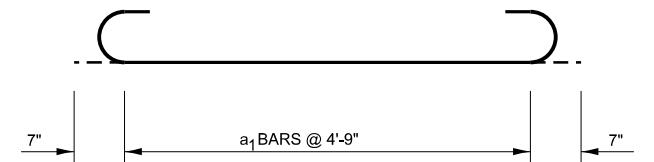
PLAN



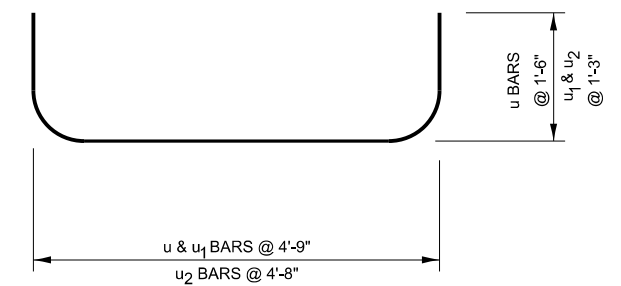
#15 L bars



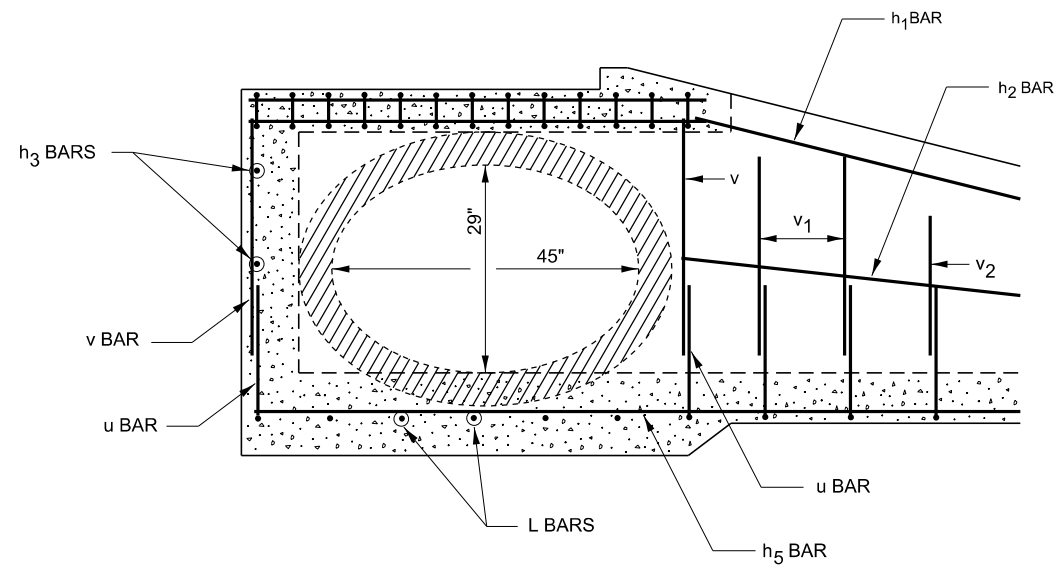
#15 L₁ bars



#15 a₁ bars



#15 U, U₁ & U₂



SECTION B-B

CLASS SI CONCRETE OR PRECAST CONCRETE SHALL BE USED THROUGHOUT.

PRECAST CONCRETE SHALL BE IN ACCORDANCE WITH SECTION 504 OF THE STANDARD SPECIFICATIONS.

A 3" DEEP SAND BEDDING CONFORMING TO ARTICLE 1003.01 (FA-1 OR FA-2) SHALL BE PROVIDED UNDER FULL LENGTH AND WIDTH OF PRECAST UNIT. ALL VOIDS AROUND PIPE ENTRANCE, BOTH INSIDE AND OUTSIDE, SHALL BE SEALED WITH MORTAR.

FOR BACKFILLING AND EMBANKMENT, SEE STANDARD SPECIFICATIONS.

GALVANIZED STEEL PIPE SHALL MEET THE REQUIREMENTS OF ASTM A-53, GRADE B, SCHEDULE 40 OR APPROVED EQUAL.

GALVANIZED U-BOLTS, NUTS AND WASHERS SHALL MEET THE REQUIREMENTS OF ARTICLE 706.27 (f) OF THE STANDARD SPECIFICATIONS.

STEEL PLATE SHALL MEET THE REQUIREMENTS OF ARTICLE 1006.04 OF THE STANDARD SPECIFICATIONS AND BE GALVANIZED IN ACCORDANCE WITH AASHTO M111 AFTER FABRICATION.

EXPOSED EDGES SHALL BE BEVELED 3/4".

MINIMUM BAR LAPS SHALL BE 1'-1" UNLESS OTHERWISE SPECIFIED.

THE CONTRACT UNIT PRICE "EACH" FOR INLET BOX, SPECIAL, IN PLACE SHALL INCLUDE CLASS SI OR PRECAST CONCRETE, REINFORCEMENT BARS, BEDDING WHEN REQUIRED, GALVANIZED PIPE AND GALVANIZED HARDWARE.

STATE OF ILLINOIS
DEPARTMENT OF TRANSPORTATION

INLET BOX, SPECIAL

542-4A

USER NAME = ronald.pohar	DESIGNED -	REVISED -
PLOT SCALE = 100,000 ' / in.	DRAWN -	REVISED -
PLOT DATE = 3/18/2024	CHECKED -	REVISED -
	DATE -	REVISED -

SCALE: SHEET OF SHEETS STA. TO STA.

F.A. RTE.	SECTION	COUNTY	TOTAL SHEETS	SHEET NO.
CONTRACT NO.				
ILLINOIS FED. AID PROJECT				

MODEL det 3 det 1b
FILE Name: p:\illinois\paw_bentley.com\PI\DOT\Documents\DOT_Offices\District_3\Standards - District_3\DETAILS\SUBDISTRICT_3_STANDARD_DETAILS.dgn\500-599_STRUCTURES.dgn