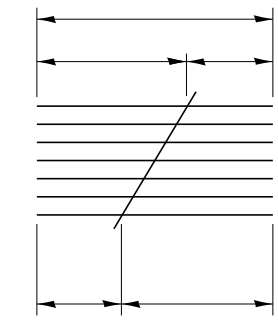


HALF LONG SECTION

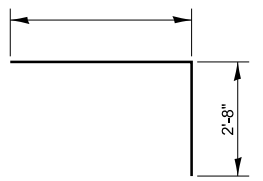
HALF ELEVATION

DIMENSIONS AT RT. ∠'S TO C ROADWAY

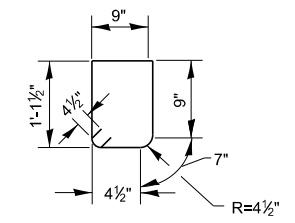


BAR CUTTING DIAGRAM

BARS h & h1

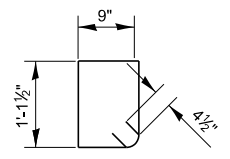


BAR z



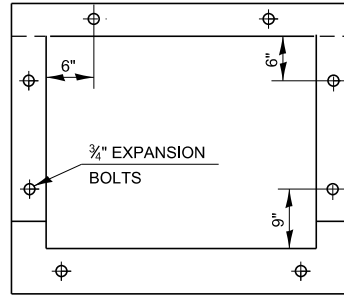
BAR s

(UPSTREAM)



BAR s1

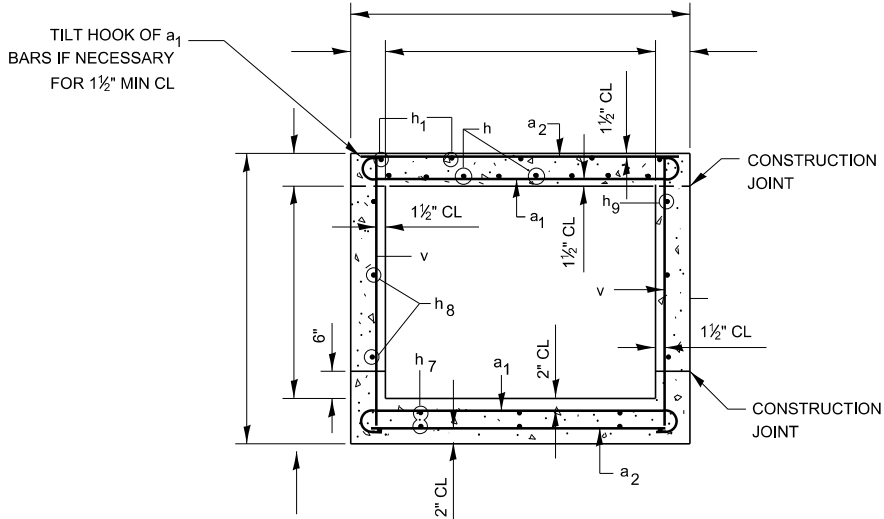
(DOWNSTREAM)



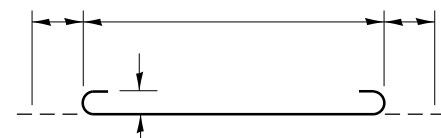
SIDEWALLS @ " CTS
TOP & BOTTOM @ " CTS

EXPANSION BOLT LOCATION

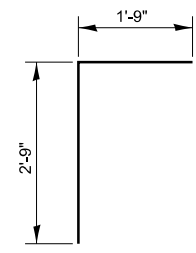
NOTE: EXPANSION BOLTS SHALL CONSIST OF SELF DRILL EXPANSION SHIELDS AND 3/4" DIAMETER HOOKED BOLTS. HOOKED BOLTS SHALL EXTEND A MINIMUM OF 9" INTO NEW CONCRETE. MINIMUM CERTIFIED PROOF LOAD = 4,080 LBS.



SECTION THRU BARREL



BAR a1



BAR d

BILL OF MATERIAL

BAR	NO.	SIZE	LENGTH
a1			
a2		#4	
a3			
d			
h			
h1			
h3			
h4			
h5			
h6			
h7			
h8			
h9			
h10		#6	
h11			
s			
s1			
v			
v 1(E)			
v 2(E)			
v 3(E)			
v 4(E)			
v 5(E)			
v 6(E)			
v 7(E)			
v 8(E)			
w		#5	
w1		#5	
z			
CONCRETE			CU YD
BOX CULVERTS			
REINFORCEMENT BARS			LBS
REIN BARS (EPOXY CTD)			LBS
CONCRETE REMOVAL			CU YD
EXPANSION BOLTS			EACH

540-2B

MODEL: det 3 dets1b
FILE: \\paw.bentley.com\paw\dot\Documents\DOT\Office\District 3\Standards - District 3\DETAILS\DISTRICT 3 STANDARD DETAILS.DGN\500-599 STRUCTURES.dgn

USER NAME = ronald.pohar	DESIGNED -	REVISED -
PLOT SCALE = 100,000 ' / in.	DRAWN -	REVISED -
PLOT DATE = 3/15/2024	CHECKED -	REVISED -
	DATE -	REVISED -

STATE OF ILLINOIS
DEPARTMENT OF TRANSPORTATION

BOX CULVERT EXTENSION STATION

SCALE: SHEET OF SHEETS STA. TO STA.

F.A. RTE.	SECTION	COUNTY	TOTAL SHEETS	SHEET NO.
CONTRACT NO.				
ILLINOIS FED. AID PROJECT				