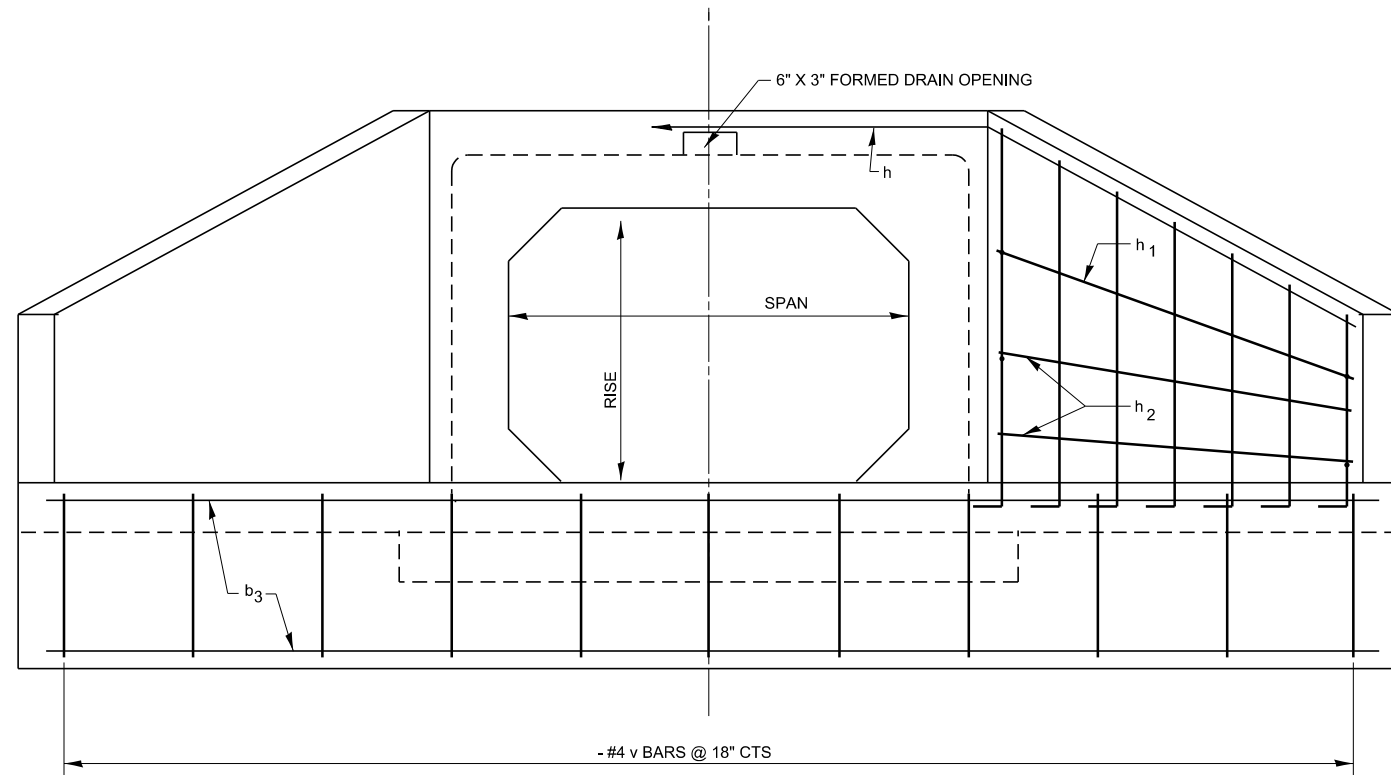
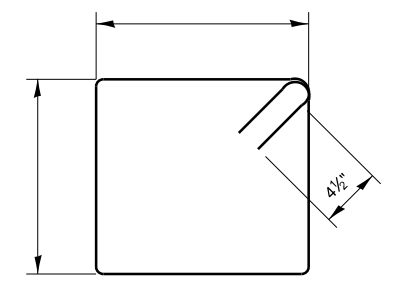


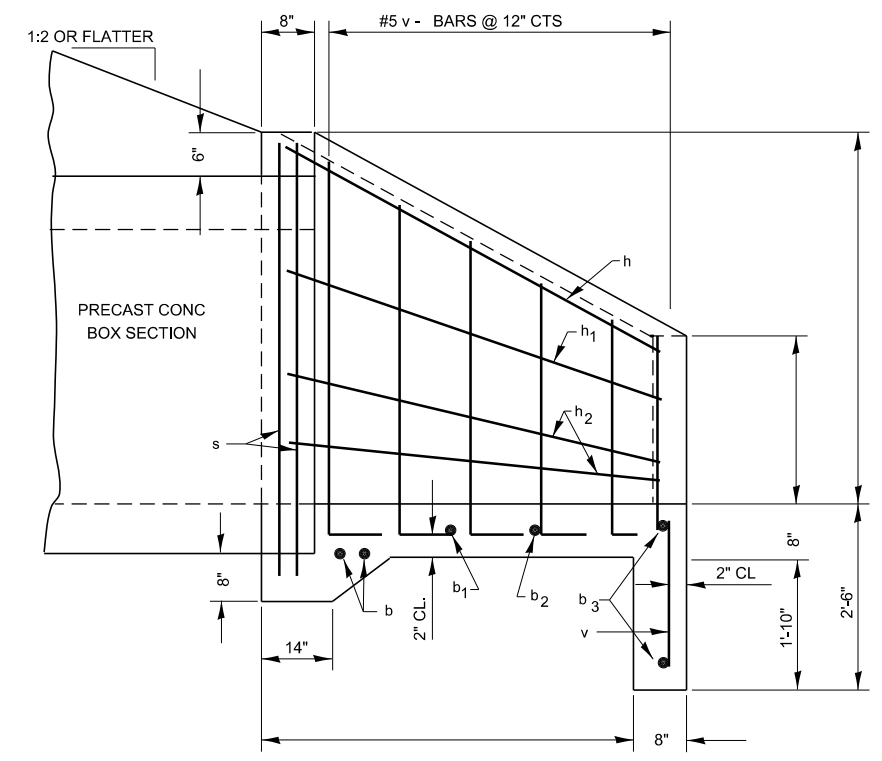
MODEL det 3 details  
 FILE Name: p:\illinois\paw\_bentley.com\PROJECTS\Documents\DOT\_Offices\District\_3Standards - District\_3\RETAIN\SUBDISTRICT\_3\_STANDARD\_DETAILS\_DGN\500-599\_STRUCTURES.dgn



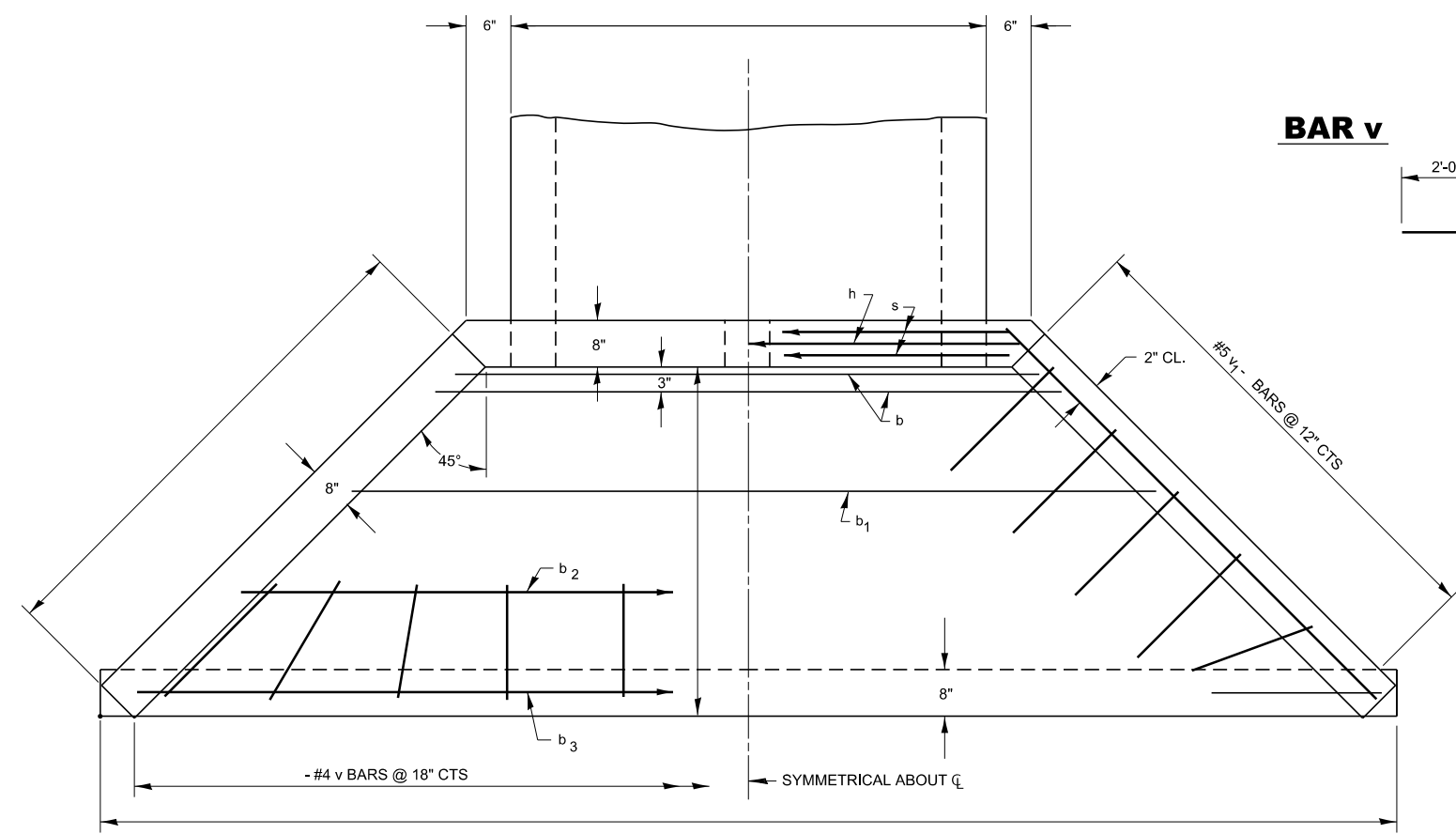
**END ELEVATION**



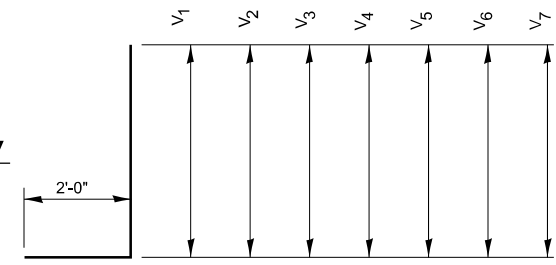
**BAR s**



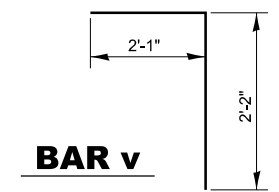
**HALF SIDE ELEVATION**



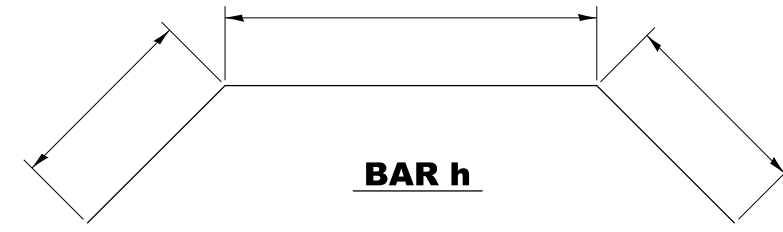
**PLAN**



**BAR v**



**BAR v**



**BAR h**

**GENERAL NOTES**

CLASS SI CONCRETE SHALL BE USED THROUGHOUT.  
 EXPOSED EDGES SHALL BE BEVELED 3/4".  
 REINFORCEMENT BARS SHALL CONFORM TO THE  
 REQUIREMENTS OF AASHTO M-31, M-42, OR M-53, GRADE 60.

**DESIGNER NOTE:**  
 WHEN RISE 5', V<sub>1</sub> TO V<sub>7</sub>  
 SHALL BE EPOXY COATED

BILL OF MATERIAL				
BAR	SIZE	NO.	LENGTH	SHAPE
b	5	2		—
b <sub>1</sub>	4	1		—
b <sub>2</sub>	4	1		—
b <sub>3</sub>	4	2		—
h	5	1		—
h <sub>1</sub>	4	2		—
h <sub>2</sub>	4	4		—
s	4	2		—
v	4		4'-3"	—
V <sub>1</sub>	5	2		—
V <sub>2</sub>	5	2		—
V <sub>3</sub>	5	2		—
V <sub>4</sub>	5	2		—
V <sub>5</sub>	5	2		—
V <sub>6</sub>	5	2		—
V <sub>7</sub>	5	2		—
CONCRETE HEADWALLS			CU YD	
REINFORCEMENT BARS			LBS	
REIN BARS (EPOXY CTD)			LBS	

TABLE FOR ONE (1) HEADWALL

USER NAME = ronald.pohar	DESIGNED -	REVISED -
PLOT SCALE = 100,000' / in.	DRAWN -	REVISED -
PLOT DATE = 3/18/2024	CHECKED -	REVISED -
	DATE -	REVISED -

**STATE OF ILLINOIS**  
**DEPARTMENT OF TRANSPORTATION**

SCALE:	SHEET	OF	SHEETS	STA.	TO	STA.
--------	-------	----	--------	------	----	------

F.A. RTE.	SECTION	COUNTY	TOTAL SHEETS	SHEET NO.
CONTRACT NO.				
ILLINOIS FED. AID PROJECT				