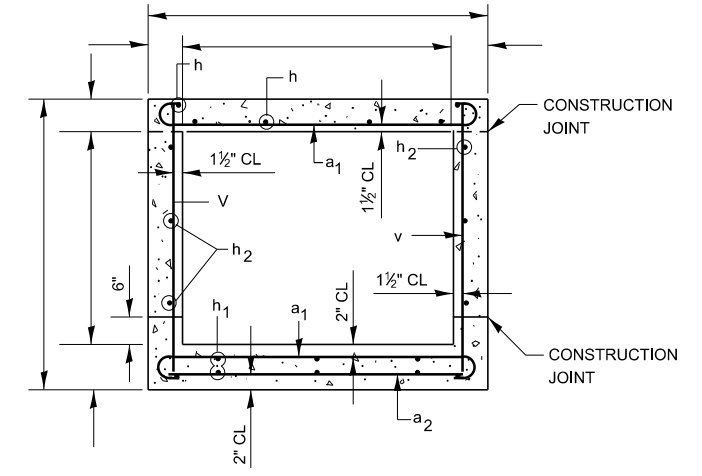
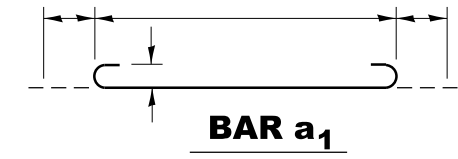


HALF LONG SECTION

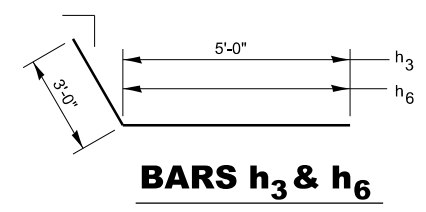
HALF ELEVATION



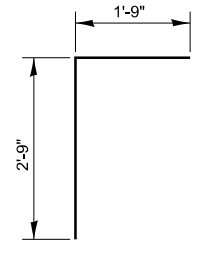
SECTION THRU BARREL



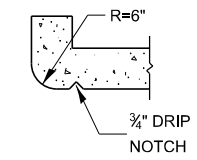
BAR a₁



BARS h₃ & h₆



BAR d



SECTION THRU HEADWALL
(UP STREAM END ONLY)

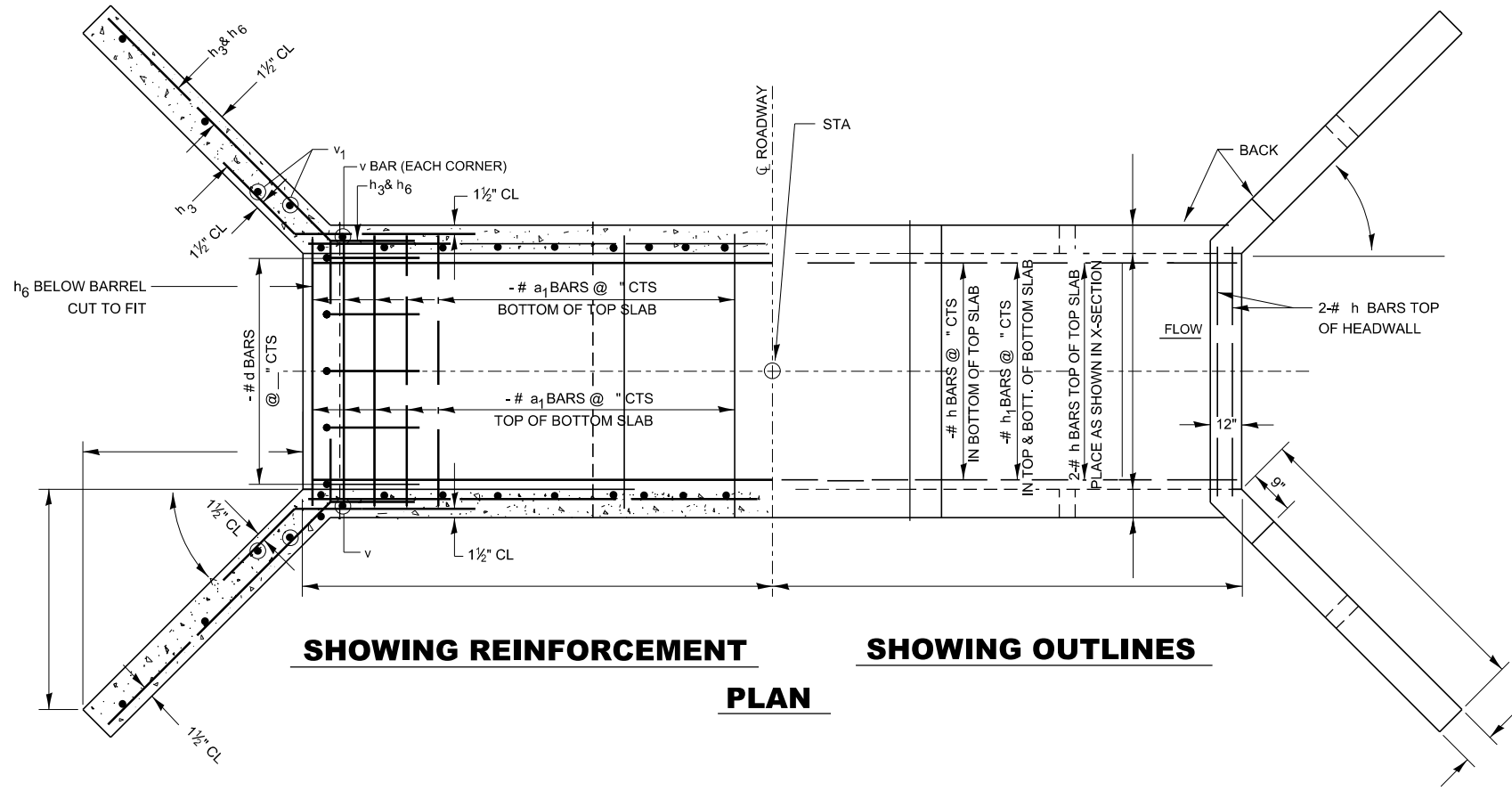
BILL OF MATERIALS

BAR	NUMBER	SIZE	LENGTH
a ₁			
a ₂			
a ₃			
d			
h			
h ₁			
h ₂			
h ₃			
h ₄			
h ₆			
v			
v ₁			
v ₂			
CONC BOX CULV		CU YD	
REINFORCEMENT BARS		LBS	

GENERAL NOTES

CLASS SI CONCRETE SHALL BE USED THROUGHOUT.
 AT LEAST SIX FEET OF BARREL SHALL BE POURED MONLITHICALLY WITH WINGWALLS.
 EXPOSED EDGES SHALL BE BEVELED 3/4".
 FOR BACKFILLING AND EMBANKMENTS SEE STANDARD SPECIFICATIONS.
 TILT HOOK OF a₁ BARS, IF NECESSARY, TO OBTAIN 1 1/2" MINIMUM CLEARANCE AT TOP OF HOOK.

DESIGN STRESSES
 f_y = 60,000 PSI
 f'_c = 3,500 PSI
 LOADING HS 20-44 & ALT.



SHOWING REINFORCEMENT PLAN

SHOWING OUTLINES

MODEL det 3 dets1b
 FILE Name: p:\projects\paw_bentley.com\p\1101\Documents\1\DOT Office\District 3\Standards - District 3\DETAILS\SUBJECT 3 STANDARD DETAILS_DGN\500-599 STRUCTURES.dgn

USER NAME = ronald.pohar	DESIGNED -	REVISED -
PLOT SCALE = 100,000 ' / in.	DRAWN -	REVISED -
PLOT DATE = 3/18/2024	CHECKED -	REVISED -
	DATE -	REVISED -

STATE OF ILLINOIS
DEPARTMENT OF TRANSPORTATION

BOX CULVERT STATION				
SCALE:	SHEET	OF	SHEETS	STA. TO STA.

F.A. RTE.	SECTION	COUNTY	TOTAL SHEETS	SHEET NO.
CONTRACT NO.				
ILLINOIS FED. AID PROJECT				