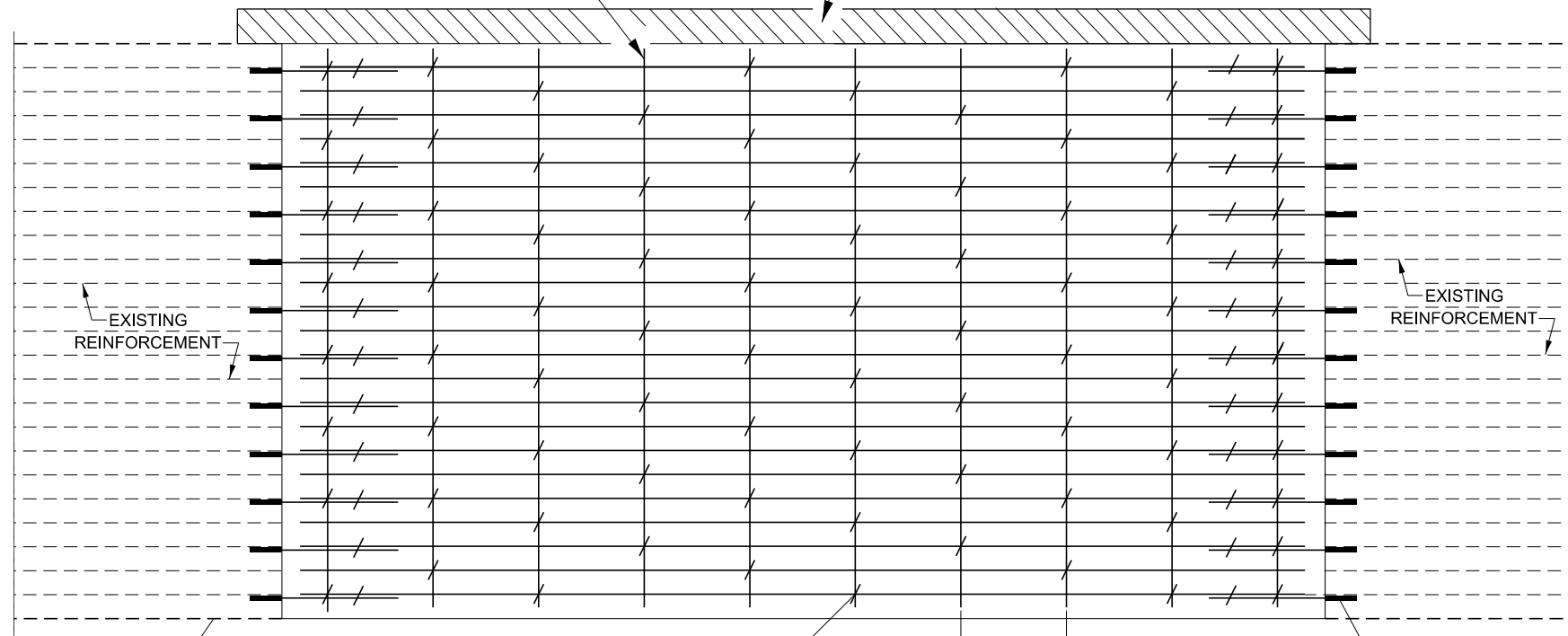


TRANSVERSE REBAR SHALL EXTEND TO OUTER LONGITUDINAL REBAR WHILE PROVIDING A MINIMUM 3" CLEARANCE FROM EXISTING PAVEMENT EDGE

SHOULDER REMOVAL



EDGE OF LANE

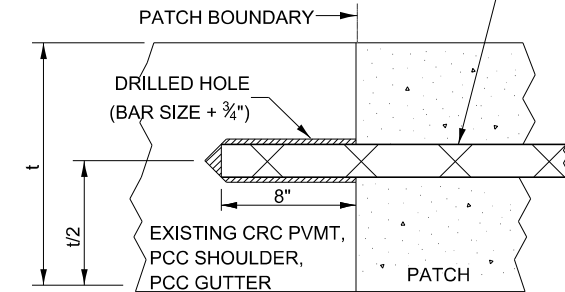
* NO. 6 TRANSVERSE BAR SHALL BE TIED TO LONGITUDINAL BAR.

4'-0" (TYP.)

#8X32" EPOXY COATED TIE BARS, DRILLED AND GROUTED INTO EXISTING PAVEMENT (TYPICAL).

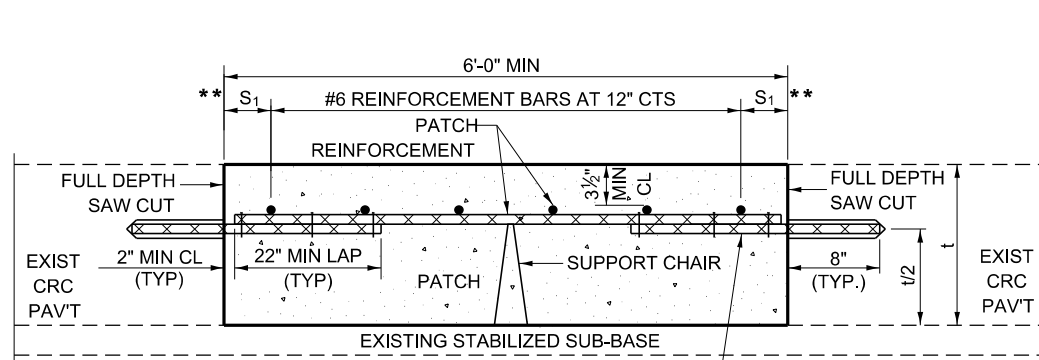
PAVEMENT REINFORCEMENT DETAIL

#6X24" EPOXY COATED TIE BARS DRILLED AND GROUTED INTO EXISTING PAVEMENT (TYPICAL)



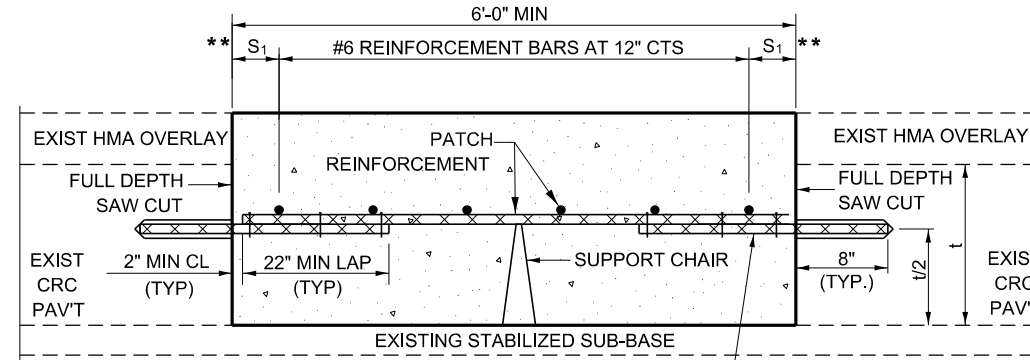
LONGITUDINAL CONSTRUCTION JOINT

PATCHES MORE THAN 20' IN LENGTH SHALL BE TIED TO ADJACENT PAVEMENT, PCC SHOULDERS OR PCC CURB AND GUTTER WITH #6X24" EPOXY COATED TIE BARS AT 36" CENTERS.



WITHOUT HMA OVERLAY

#8X32" EPOXY COATED TIE BARS DRILLED AND GROUTED INTO EXISTING PAVEMENT (TYPICAL)



WITH HMA OVERLAY

#8X32" EPOXY COATED TIE BARS DRILLED AND GROUTED INTO EXISTING PAVEMENT (TYPICAL)

PATCHING DETAIL FOR CLASS A PATCHING (CRC PAVEMENT)

NOTES:

EXISTING LONGITUDINAL REINFORCEMENT:
22 - #5 BARS AT 6 1/2" SPACING.

SPACING OF NEW LONGITUDINAL REINFORCEMENT SHALL MATCH THE SPACING OF EXISTING REINFORCEMENT AND SHALL BE TIED TOGETHER WITH A MINIMUM OF TWO TIES PER BAR.

TRANSVERSE CONSTRUCTION JOINTS: #8 X 32" EPOXY COATED TIE BAR SHALL BE DRILLED AND GROUTED INTO THE EXISTING PCC PAVEMENT AT A SPACING OF ± TWICE THE SPACING OF EXISTING LONGITUDINAL REINFORCEMENT BARS AND SHALL BE TIED TO PROPOSED LONGITUDINAL REINFORCEMENT WITH A MINIMUM OF TWO TIES PER BAR WHEN PRACTICAL.

* EVERY THIRD INTERSECTION MUST BE TIED. WHEN THE MINIMUM CLEARANCE CANNOT BE OBTAINED WITH THE TRANSVERSE REBAR ON TOP, THEN THE TRANSVERSE REBAR SHALL BE TIED TO THE BOTTOM OF THE LONGITUDINAL REBAR.

** VARIABLE: WHERE S₁ IS 2 1/2" MIN. AND 12" MAX.

MODEL: ###
FILE NAME: c:\pwworking\dwg\chamrj\dms1560400-499 SURF CSE PAVT REHAB & SHLD.dgn

USER NAME = Anthony.Grunstad	DESIGNED -	REVISED -
	DRAWN -	REVISED -
PLOT SCALE = 100,000 / 1in.	CHECKED -	REVISED -
PLOT DATE = 6/26/2024	DATE -	REVISED -

STATE OF ILLINOIS
DEPARTMENT OF TRANSPORTATION

CLASS A PATCHING DETAILS

SCALE: SHEET 2 OF 3 SHEETS STA. TO STA.

F.A. RTÉ.	SECTION	COUNTY	TOTAL SHEETS	SHEET NO.
CONTRACT NO.				
ILLINOIS FED. AID PROJECT				