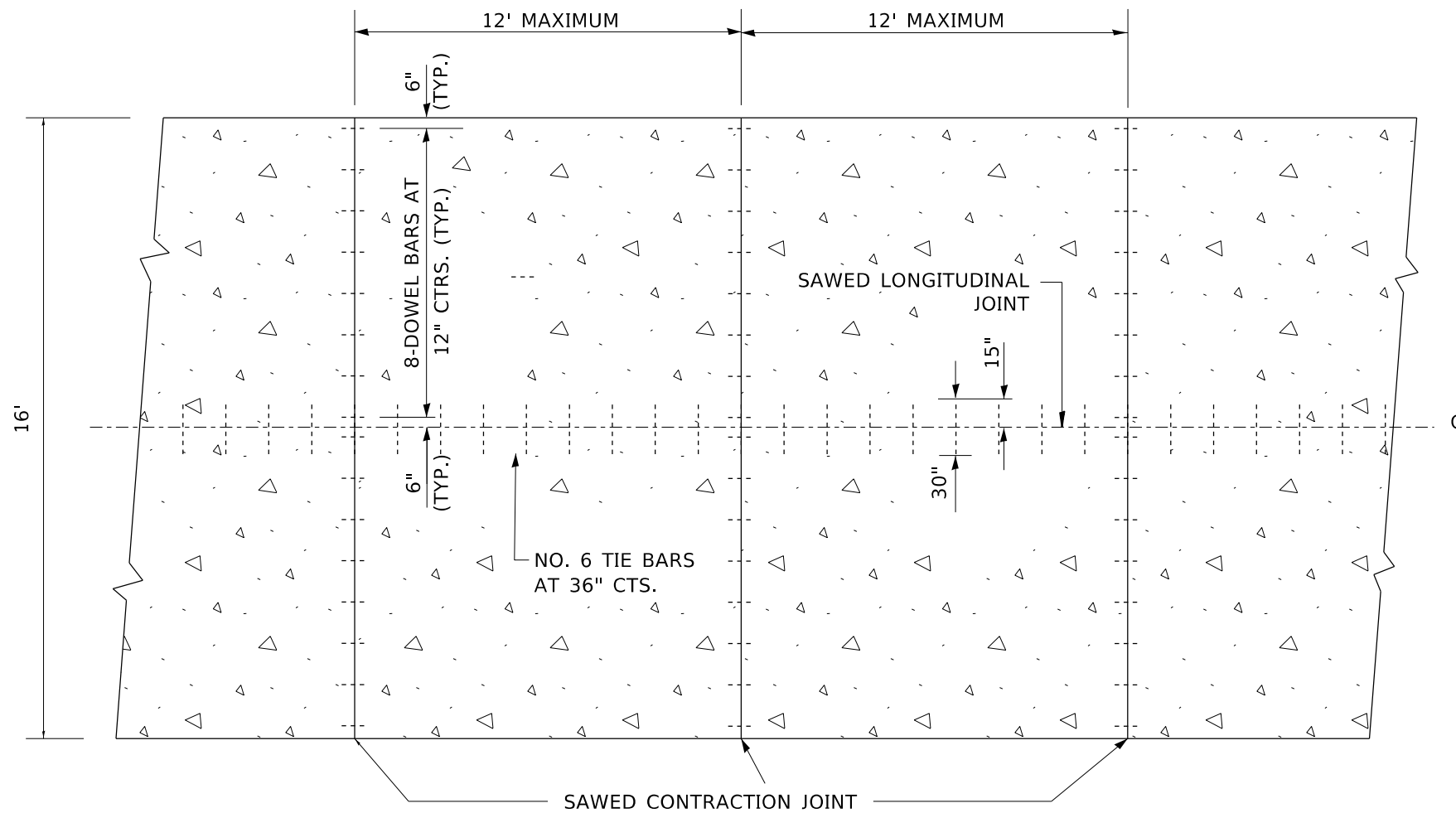


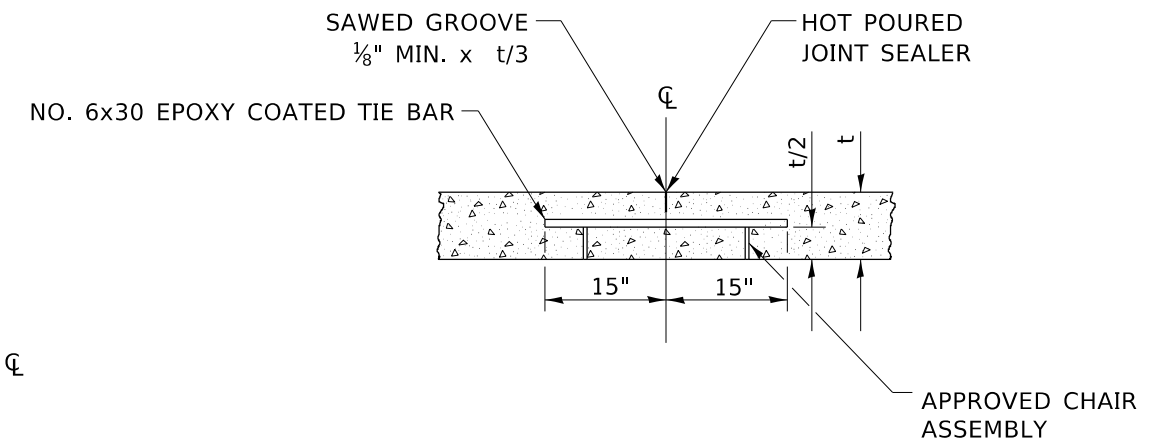
**SECTION**



**PLAN**

**NOTES:**

1. CENTERLINE JOINT REMAINS IN THE CENTER WHEN RAMP TRANSITIONS TO TWO (2) RAMPS AT 12'.
2. ALL BARS TO BE EPOXY COATED.



**SAWED LONGITUDINAL JOINT**

ALL DIMENSIONS ARE IN INCHES UNLESS OTHERWISE NOTED

MODEL: Default  
 FILE: h:\mhc\_pav\illsec-pav-bentley.com\p\illdot\Documents\DOT\_Offices\DHrdt. I:\Projects\DH4223\ACADD\Drawings\CAD\Sheet\B49.dgn

USER NAME = Lawrence,DeManche	DESIGNED -	REVISED - TOM MATOUSEK 08/19/10
	DRAWN - TOM MATOUSEK	REVISED - K. SMITH 11-18-22
PLOT SCALE = 100.0000' / in.	CHECKED - A. ABBAS	REVISED -
PLOT DATE = 11/18/2022	DATE - 10-18-02	REVISED -

**STATE OF ILLINOIS  
DEPARTMENT OF TRANSPORTATION**

**DETAIL FOR CENTERLINE SAW CUT 16' AND  
VARIABLE JOINTED PCC PAVEMENT FOR RAMPS**

SCALE: NONE SHEET 1 OF 1 SHEETS STA. TO STA.

F.A. RTE.	SECTION	COUNTY	TOTAL SHEETS	SHEET NO.
BD-49		CONTRACT NO.		
ILLINOIS FED. AID PROJECT				