
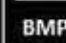



Attachment 1
BMP Small Scale Exhibits

LEGEND

-  Full Build 2040 Footprint
-  Watershed Boundary
-  Compensatory Storage
-  Recommended Rock Basin, <48 Hour Drawdown
-  Recommended Rock Basin, >48 Hour Drawdown
-  Recommended Infiltration Area
-  Existing Wet Basin
-  Streams
-  Recommended Grass Swale
-  Recommended Bioswale
-  Runoff Direction
- BMP Treatment Train**
-  Bioswale
-  Bioswale - Basin
-  Bioswale - Rock Basin
-  Bioswale - Wet Basin
-  Grass Swale
-  Grass Swale - Basin
-  Grass Swale - Rock Basin
-  Grass Swale - Wet Basin
-  Low Treatment Grass Swale
-  Basin
-  Rock Basin
-  Wet Existing Basin
-  Existing Drainage System

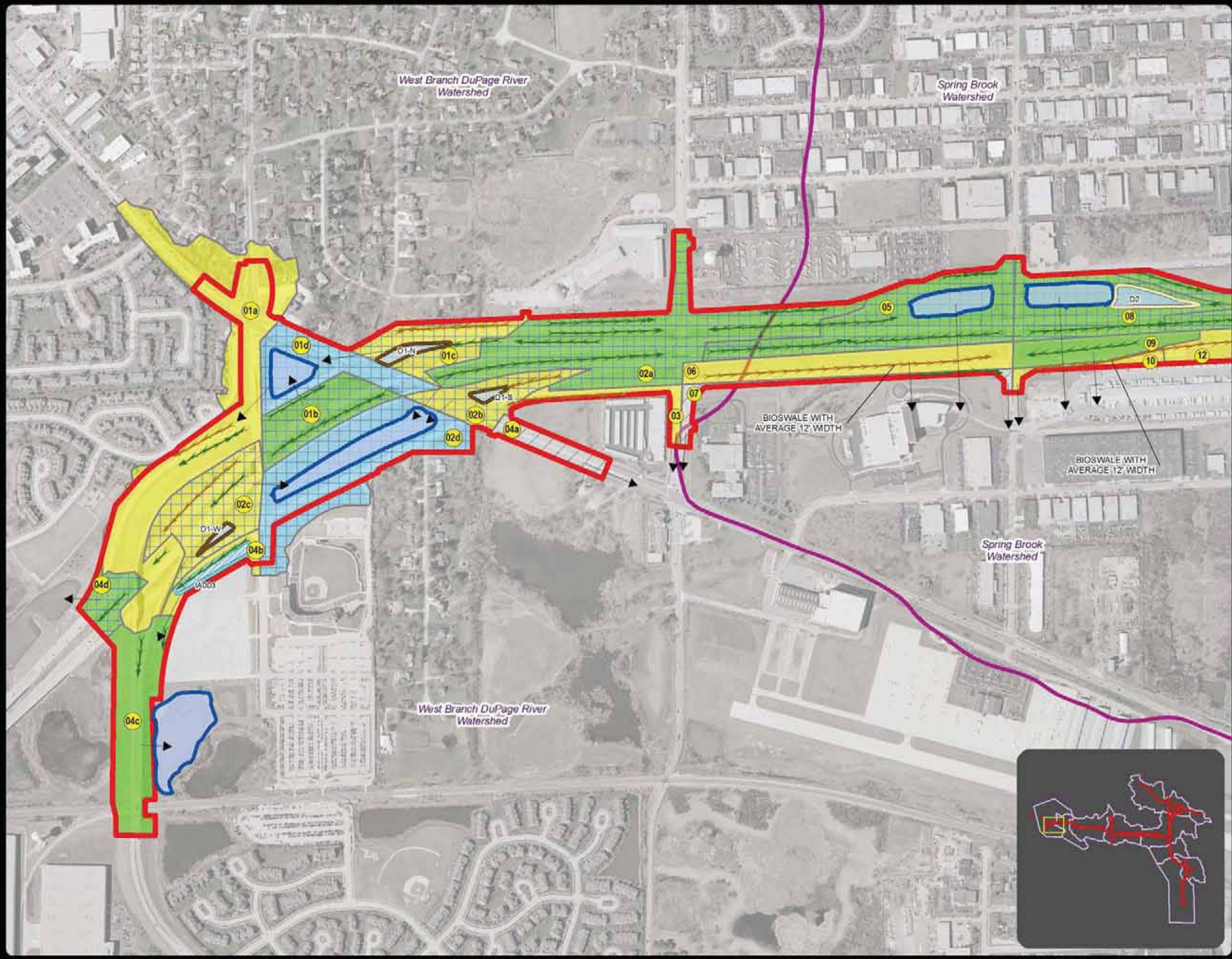
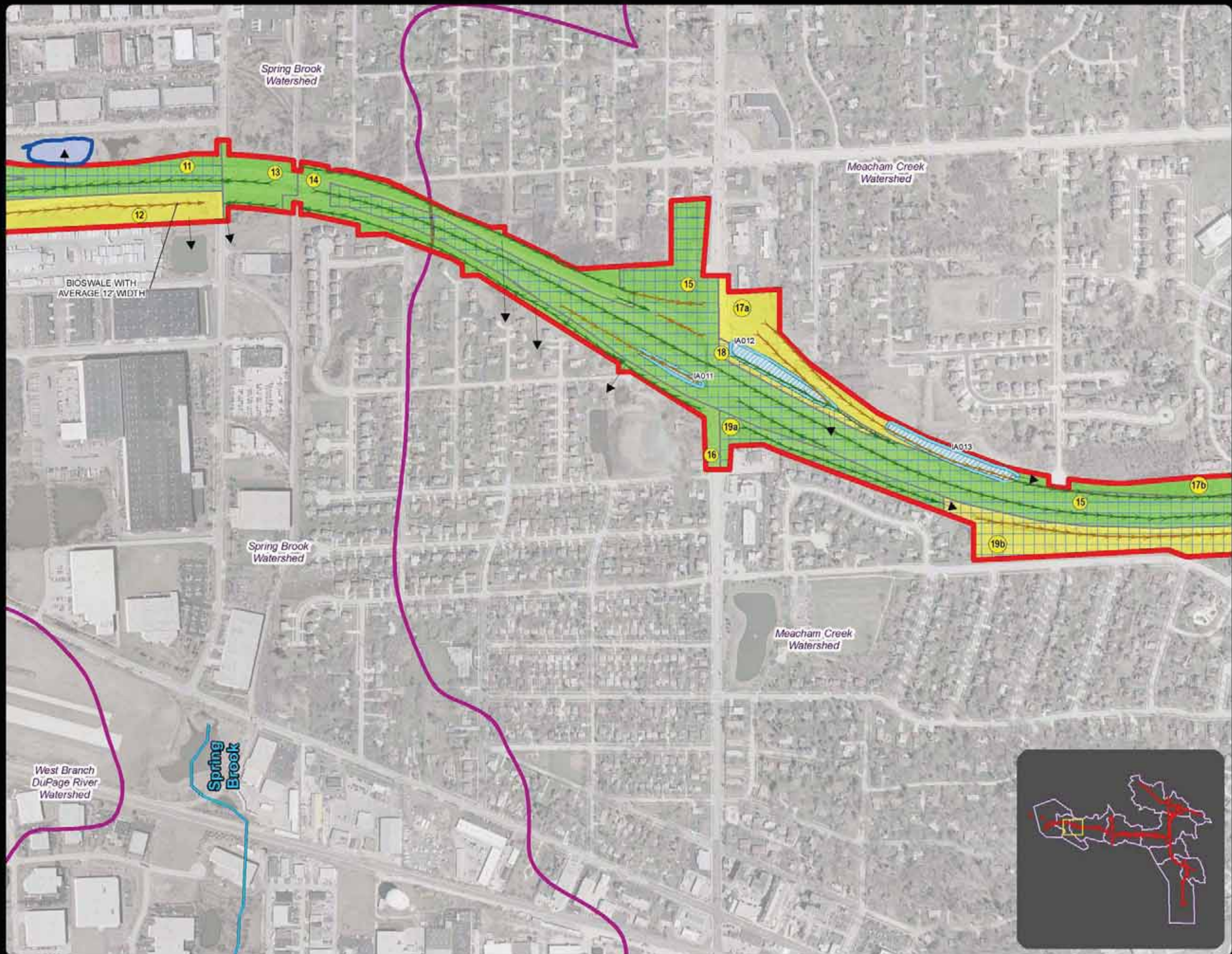


Exhibit 1
Water Quality BMPs
2040 Full Build
September 19, 2012

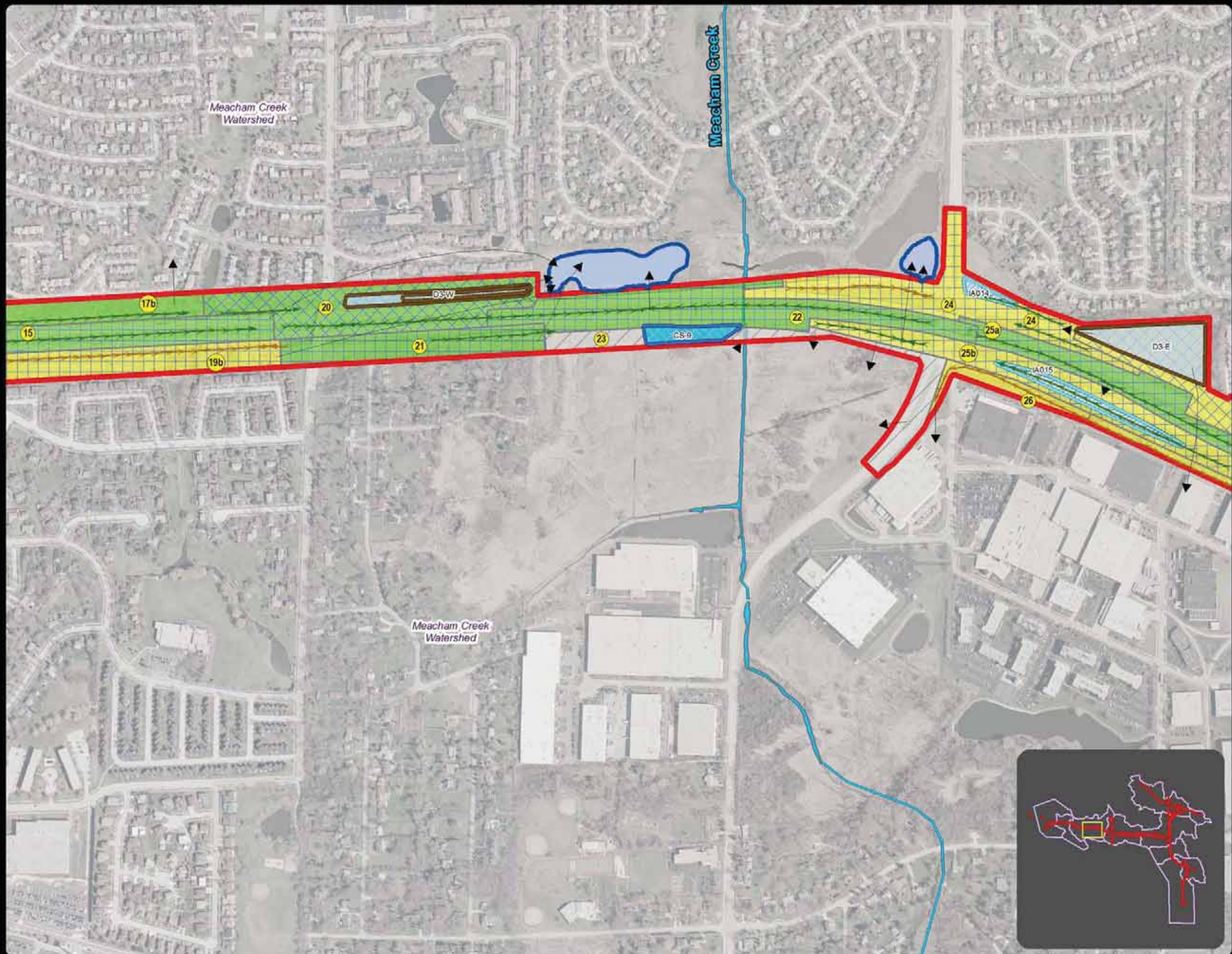


LEGEND

- Full Build 2040 Footprint
- Watershed Boundary
- Compensatory Storage
- Recommended Rock Basin, <48 Hour Drawdown
- Recommended Rock Basin, >48 Hour Drawdown
- Recommended Infiltration Area
- Existing Wet Basin
- Streams
- Recommended Grass Swale
- Recommended Bioswale
- Runoff Direction
- BMP Treatment Train**
- Bioswale
- Bioswale - Basin
- Bioswale - Rock Basin
- Bioswale - Wet Basin
- Grass Swale
- Grass Swale - Basin
- Grass Swale - Rock Basin
- Grass Swale - Wet Basin
- Low Treatment Grass Swale
- Basin
- Rock Basin
- Wet Existing Basin
- Existing Drainage System



Exhibit 2
Water Quality BMPs
2040 Full Build
September 19, 2012



LEGEND

- Full Build 2040 Footprint
- Watershed Boundary
- Compensatory Storage
- Recommended Rock Basin, <48 Hour Drawdown
- Recommended Rock Basin, >48 Hour Drawdown
- Recommended Infiltration Area
- Existing Wet Basin
- Streams
- Recommended Grass Swale
- Recommended Bioswale
- Runoff Direction
- BMP Treatment Train**
- Bioswale
- Bioswale - Basin
- Bioswale - Rock Basin
- Bioswale - Wet Basin
- Grass Swale
- Grass Swale - Basin
- Grass Swale - Rock Basin
- Grass Swale - Wet Basin
- Low Treatment Grass Swale
- Basin
- Rock Basin
- Wet Existing Basin
- Existing Drainage System



Exhibit 3
Water Quality BMPs
2040 Full Build
September 19, 2012

LEGEND



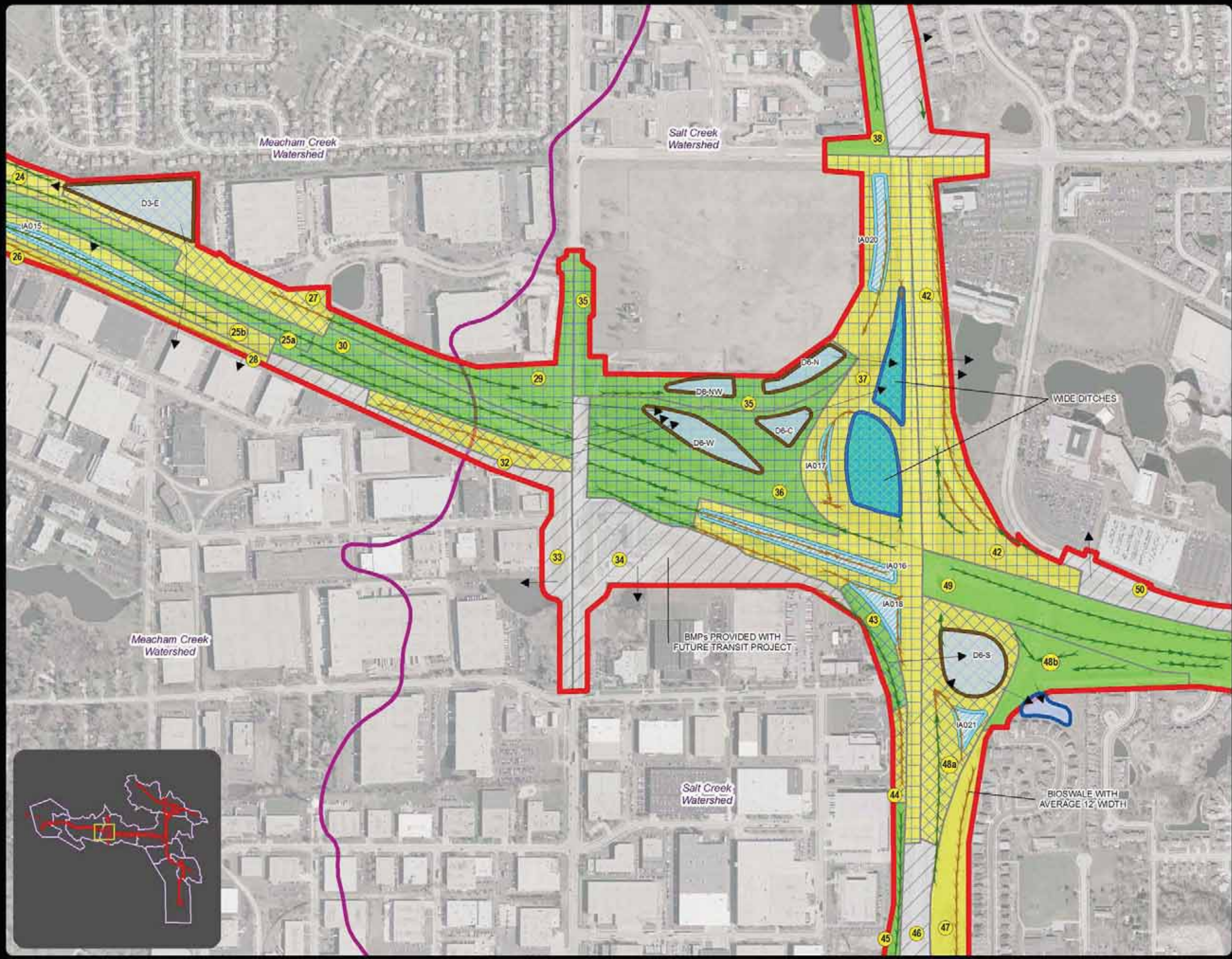
-  Full Build 2040 Footprint
-  Watershed Boundary
-  Compensatory Storage
-  Recommended Rock Basin, <48 Hour Drawdown
-  Recommended Rock Basin, >48 Hour Drawdown
-  Recommended Infiltration Area
-  Existing Wet Basin
-  Streams
-  Recommended Grass Swale
-  Recommended Bioswale
-  Runoff Direction
- BMP Treatment Train**
-  Bioswale
-  Bioswale - Basin
-  Bioswale - Rock Basin
-  Bioswale - Wet Basin
-  Grass Swale
-  Grass Swale - Basin
-  Grass Swale - Rock Basin
-  Grass Swale - Wet Basin
-  Low Treatment Grass Swale
-  Basin
-  Rock Basin
-  Wet Existing Basin
-  Existing Drainage System



Exhibit 4
Water Quality BMPs
2040 Full Build
September 19, 2012

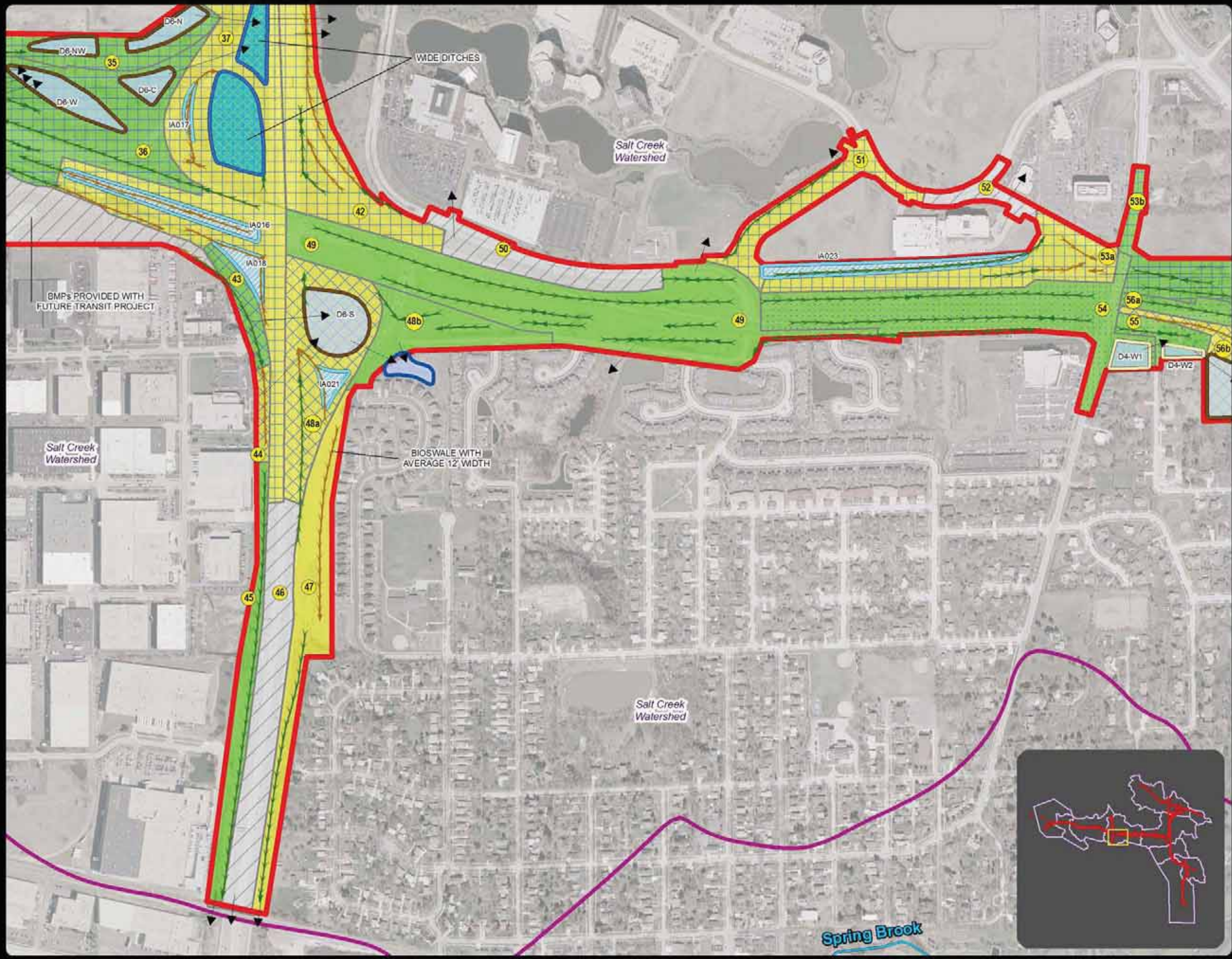


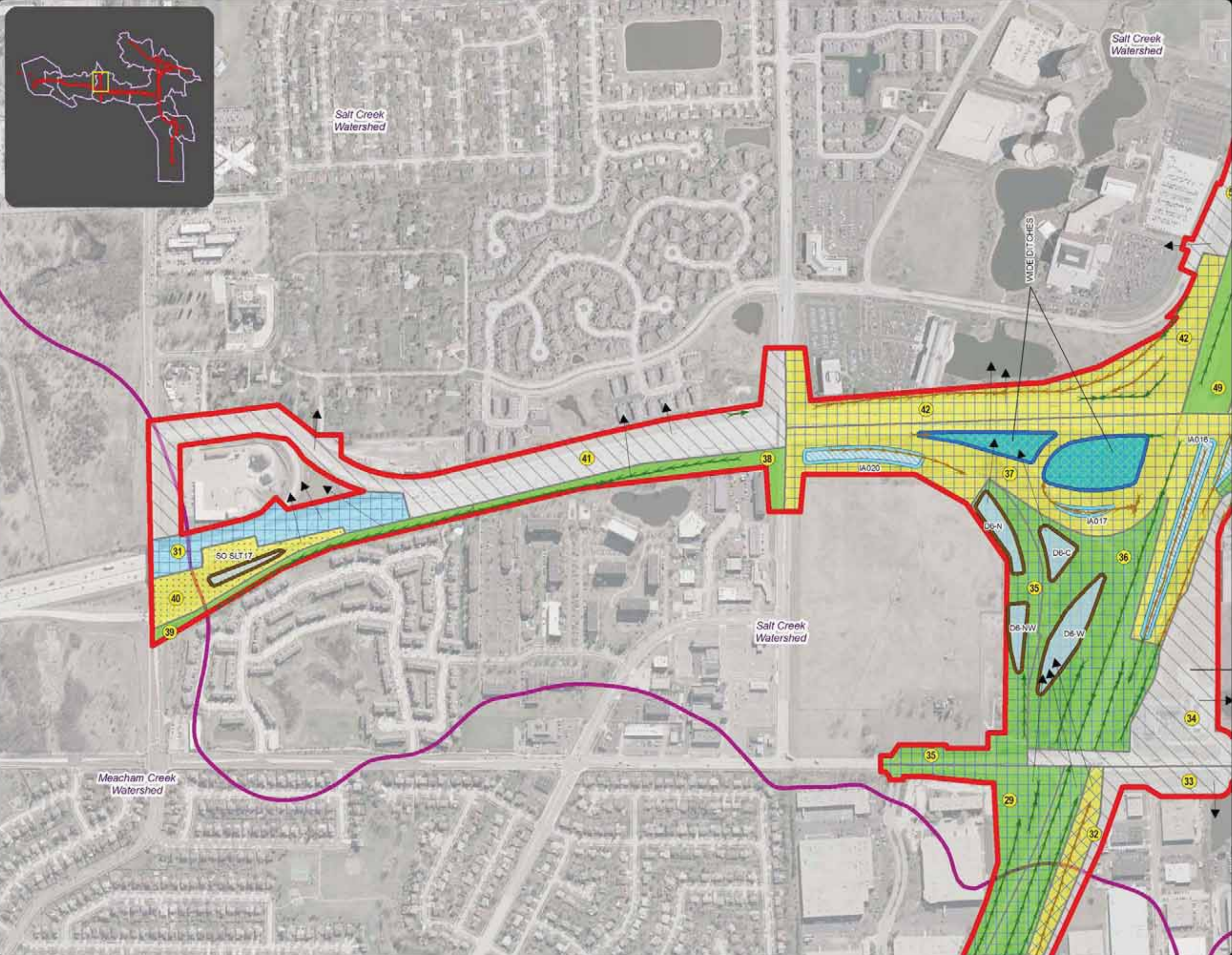
LEGEND

- Full Build 2040 Footprint
- Watershed Boundary
- Compensatory Storage
- Recommended Rock Basin, <48 Hour Drawdown
- Recommended Rock Basin, >48 Hour Drawdown
- Recommended Infiltration Area
- Existing Wet Basin
- Streams
- Recommended Grass Swale
- Recommended Bioswale
- Runoff Direction
- BMP Treatment Train**
- Bioswale
- Bioswale - Basin
- Bioswale - Rock Basin
- Bioswale - Wet Basin
- Grass Swale
- Grass Swale - Basin
- Grass Swale - Rock Basin
- Grass Swale - Wet Basin
- Low Treatment Grass Swale
- Basin
- Rock Basin
- Wet Existing Basin
- Existing Drainage System



Exhibit 5
Water Quality BMPs
2040 Full Build
September 19, 2012





LEGEND

- Full Build 2040 Footprint
- Watershed Boundary
- Compensatory Storage
- Recommended Rock Basin, <48 Hour Drawdown
- Recommended Rock Basin, >48 Hour Drawdown
- Recommended Infiltration Area
- Existing Wet Basin
- Streams
- Recommended Grass Swale
- Recommended Bioswale
- Runoff Direction
- BMP Treatment Train**
- Bioswale
- Bioswale - Basin
- Bioswale - Rock Basin
- Bioswale - Wet Basin
- Grass Swale
- Grass Swale - Basin
- Grass Swale - Rock Basin
- Grass Swale - Wet Basin
- Low Treatment Grass Swale
- Basin
- Rock Basin
- Wet Existing Basin
- Existing Drainage System



Exhibit 6
Water Quality BMPs
2040 Full Build
September 19, 2012

LEGEND



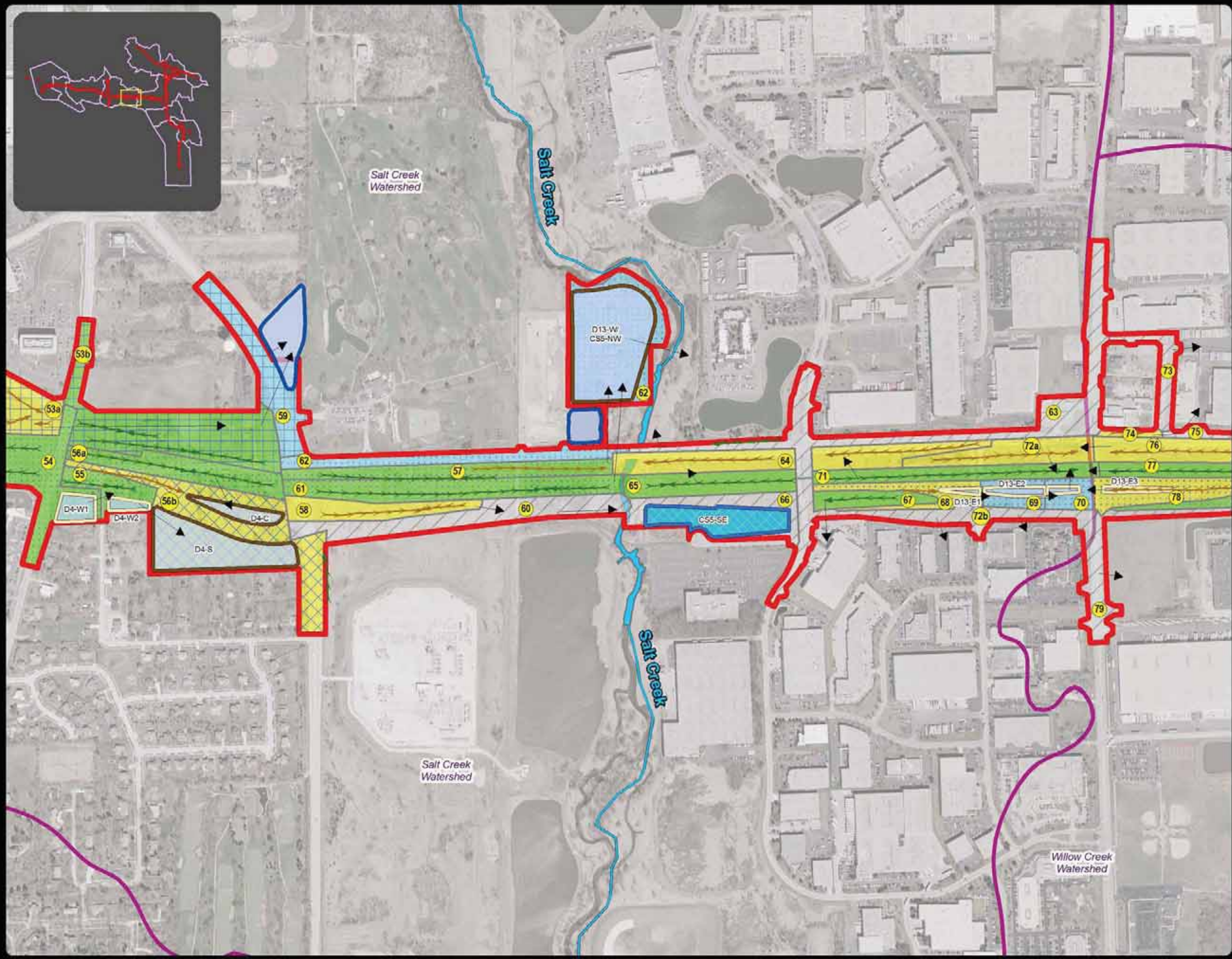
-  Full Build 2040 Footprint
-  Watershed Boundary
-  Compensatory Storage
-  Recommended Rock Basin, <48 Hour Drawdown
-  Recommended Rock Basin, >48 Hour Drawdown
-  Recommended Infiltration Area
-  Existing Wet Basin
-  Streams
-  Recommended Grass Swale
-  Recommended Bioswale
-  Runoff Direction
- BMP Treatment Train**
-  Bioswale
-  Bioswale - Basin
-  Bioswale - Rock Basin
-  Bioswale - Wet Basin
-  Grass Swale
-  Grass Swale - Basin
-  Grass Swale - Rock Basin
-  Grass Swale - Wet Basin
-  Low Treatment Grass Swale
-  Basin
-  Rock Basin
-  Wet Existing Basin
-  Existing Drainage System



Exhibit 7
Water Quality BMPs
2040 Full Build
September 19, 2012

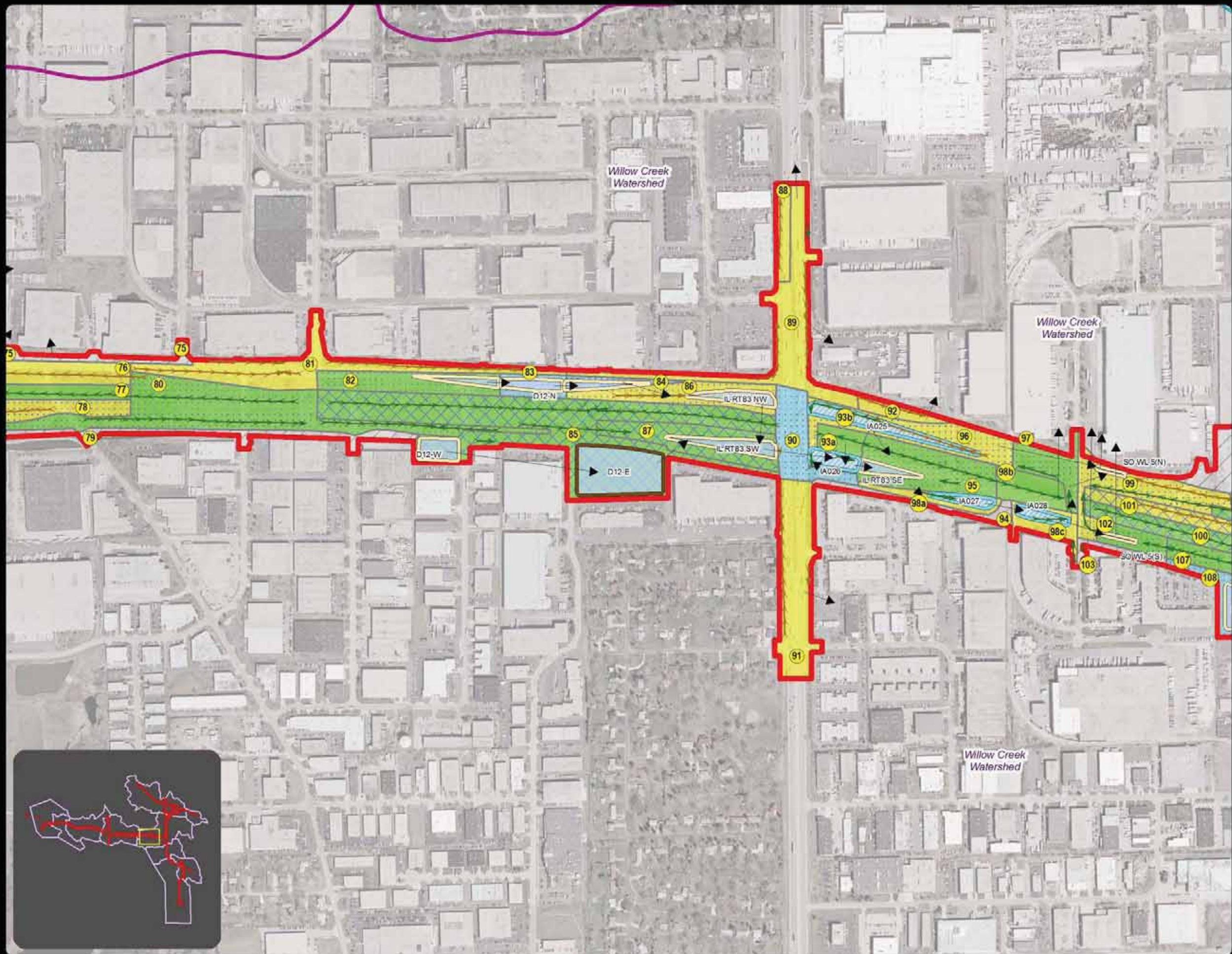


LEGEND

-  Full Build 2040 Footprint
-  Watershed Boundary
-  Compensatory Storage
-  Recommended Rock Basin, <48 Hour Drawdown
-  Recommended Rock Basin, >48 Hour Drawdown
-  Recommended Infiltration Area
-  Existing Wet Basin
-  Streams
-  Recommended Grass Swale
-  Recommended Bioswale
-  Runoff Direction
- BMP Treatment Train**
-  Bioswale
-  Bioswale - Basin
-  Bioswale - Rock Basin
-  Bioswale - Wet Basin
-  Grass Swale
-  Grass Swale - Basin
-  Grass Swale - Rock Basin
-  Grass Swale - Wet Basin
-  Low Treatment Grass Swale
-  Basin
-  Rock Basin
-  Wet Existing Basin
-  Existing Drainage System



Exhibit 8
Water Quality BMPs
2040 Full Build
September 19, 2012

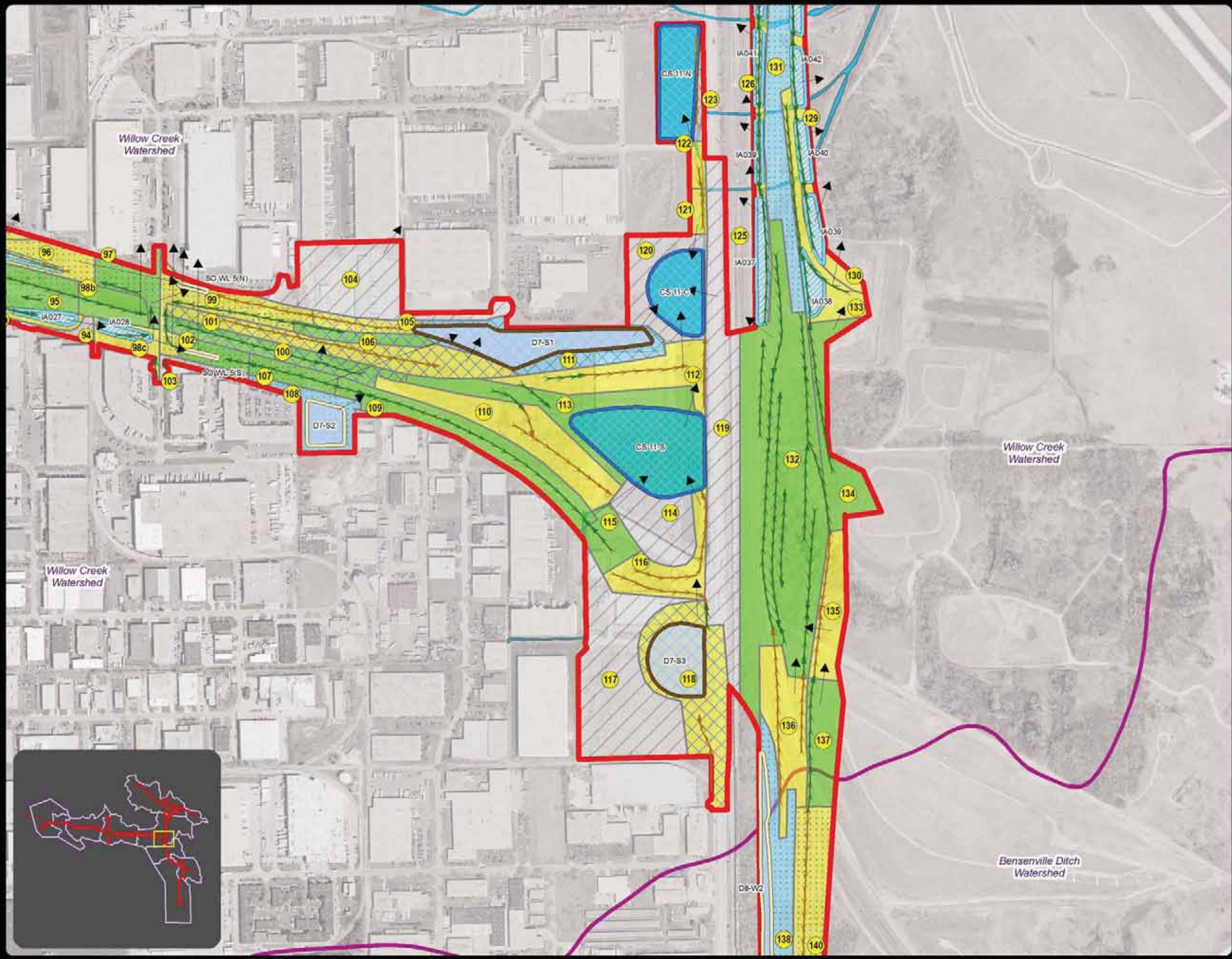


LEGEND

- Full Build 2040 Footprint
 - Watershed Boundary
 - Compensatory Storage
 - Recommended Rock Basin, <48 Hour Drawdown
 - Recommended Rock Basin, >48 Hour Drawdown
 - Recommended Infiltration Area
 - Existing Wet Basin
 - Streams
 - Recommended Grass Swale
 - Recommended Bioswale
 - Runoff Direction
- BMP Treatment Train**
- Bioswale
 - Bioswale - Basin
 - Bioswale - Rock Basin
 - Bioswale - Wet Basin
 - Grass Swale
 - Grass Swale - Basin
 - Grass Swale - Rock Basin
 - Grass Swale - Wet Basin
 - Low Treatment Grass Swale
 - Basin
 - Rock Basin
 - Wet Existing Basin
 - Existing Drainage System



Exhibit 9
Water Quality BMPs
2040 Full Build
September 19, 2012



LEGEND




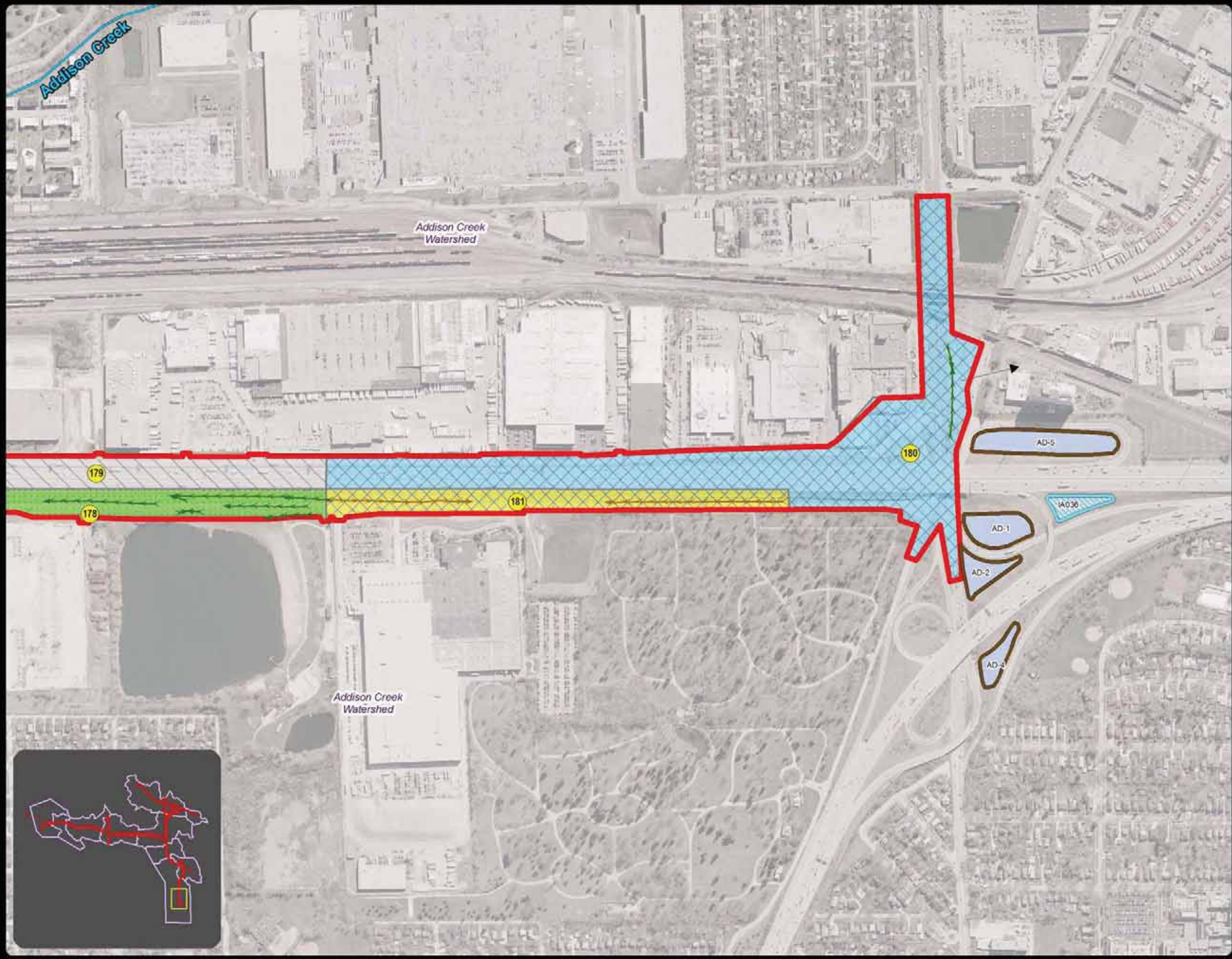
-  Full Build 2040 Footprint
-  Watershed Boundary
-  Compensatory Storage
-  Recommended Rock Basin, <48 Hour Drawdown
-  Recommended Rock Basin, >48 Hour Drawdown
-  Recommended Infiltration Area
-  Existing Wet Basin
-  Streams
-  Recommended Grass Swale
-  Recommended Bioswale
-  Runoff Direction
- BMP Treatment Train**
-  Bioswale
-  Bioswale - Basin
-  Bioswale - Rock Basin
-  Bioswale - Wet Basin
-  Grass Swale
-  Grass Swale - Basin
-  Grass Swale - Rock Basin
-  Grass Swale - Wet Basin
-  Low Treatment Grass Swale
-  Basin
-  Rock Basin
-  Wet Existing Basin
-  Existing Drainage System



Exhibit 10
Water Quality BMPs
2040 Full Build
September 19, 2012



LEGEND




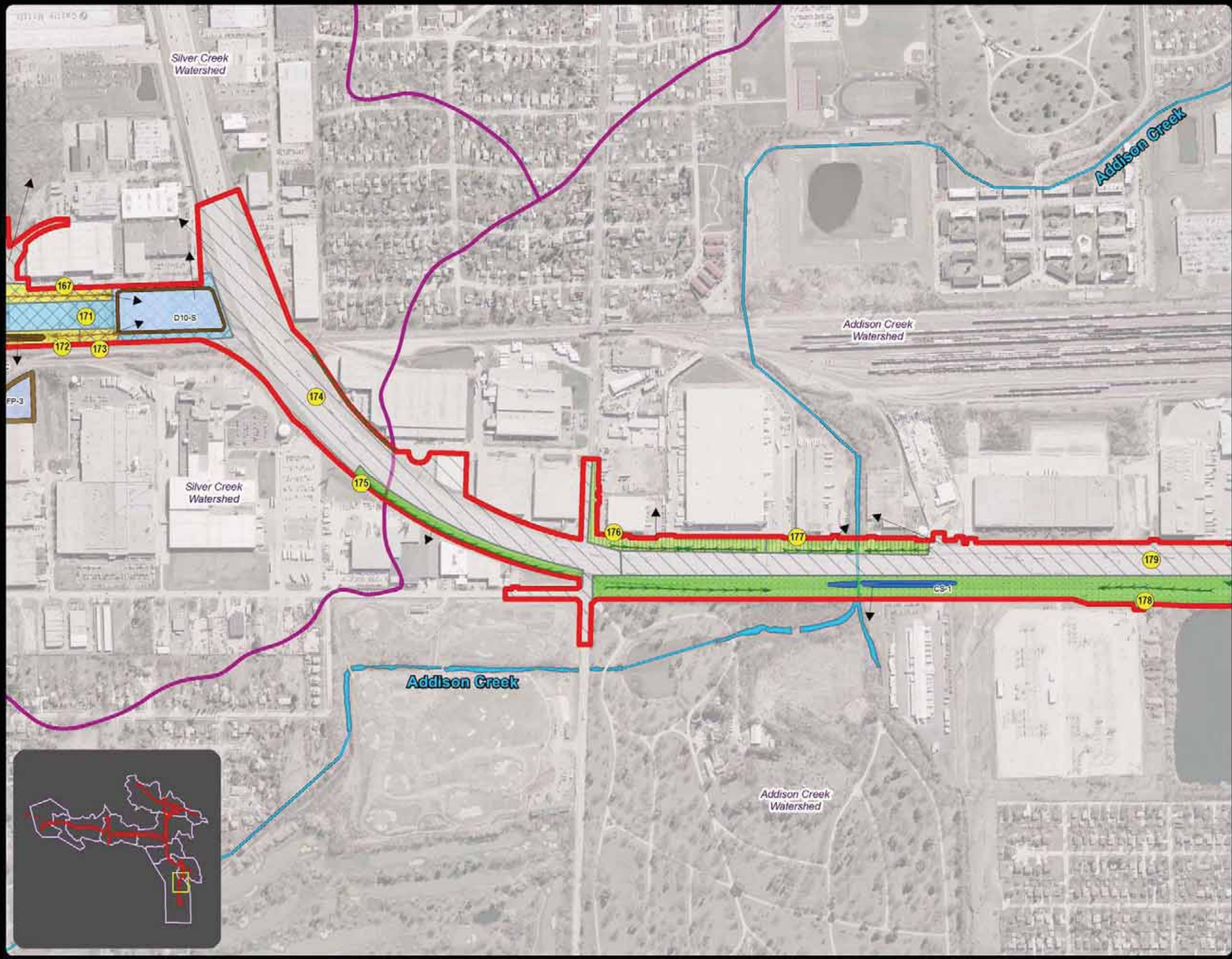
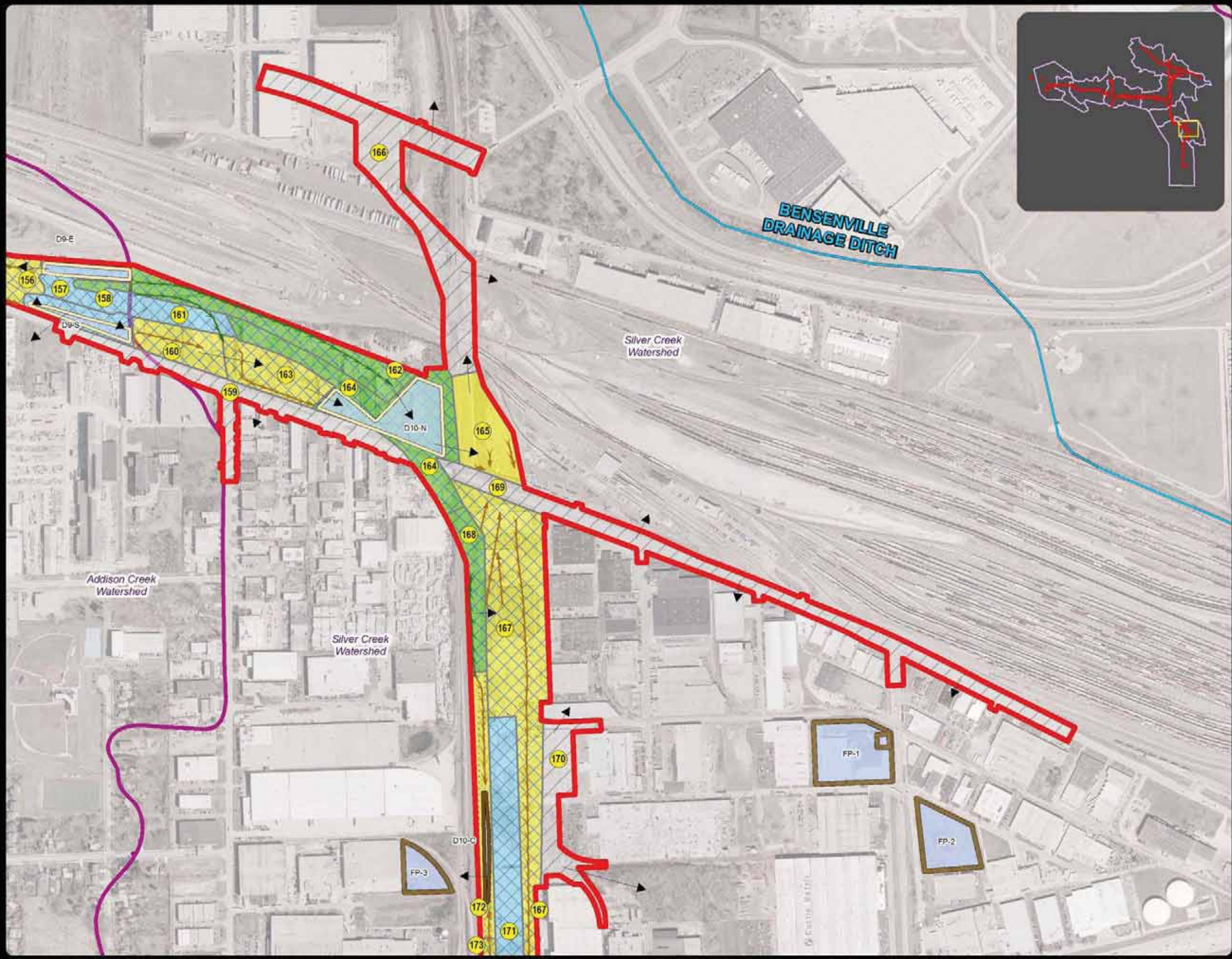
-  Full Build 2040 Footprint
-  Watershed Boundary
-  Compensatory Storage
-  Recommended Rock Basin, <48 Hour Drawdown
-  Recommended Rock Basin, >48 Hour Drawdown
-  Recommended Infiltration Area
-  Existing Wet Basin
-  Streams
-  Recommended Grass Swale
-  Recommended Bioswale
-  Runoff Direction
- BMP Treatment Train**
-  Bioswale
-  Bioswale - Basin
-  Bioswale - Rock Basin
-  Bioswale - Wet Basin
-  Grass Swale
-  Grass Swale - Basin
-  Grass Swale - Rock Basin
-  Grass Swale - Wet Basin
-  Low Treatment Grass Swale
-  Basin
-  Rock Basin
-  Wet Existing Basin
-  Existing Drainage System



Exhibit 11
Water Quality BMPs
2040 Full Build
September 19, 2012





LEGEND

- Full Build 2040 Footprint
- Watershed Boundary
- Compensatory Storage
- Recommended Rock Basin, <48 Hour Drawdown
- Recommended Rock Basin, >48 Hour Drawdown
- Recommended Infiltration Area
- Existing Wet Basin
- Streams
- Recommended Grass Swale
- Recommended Bioswale
- Runoff Direction
- BMP Treatment Train**
- Bioswale
- Bioswale - Basin
- Bioswale - Rock Basin
- Bioswale - Wet Basin
- Grass Swale
- Grass Swale - Basin
- Grass Swale - Rock Basin
- Grass Swale - Wet Basin
- Low Treatment Grass Swale
- Basin
- Rock Basin
- Wet Existing Basin
- Existing Drainage System



Exhibit 12
Water Quality BMPs
2040 Full Build
September 19, 2012

LEGEND

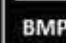

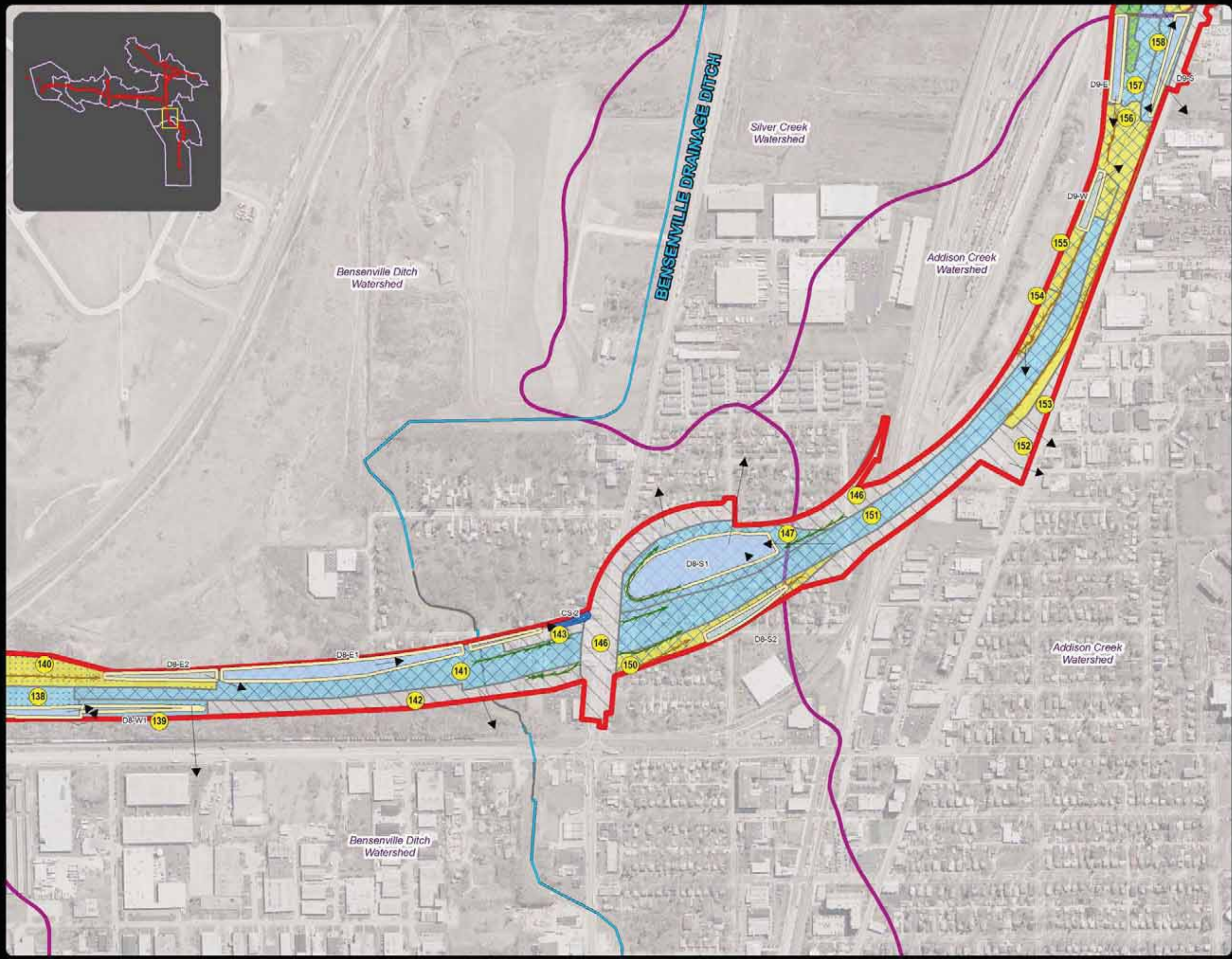
-  Full Build 2040 Footprint
-  Watershed Boundary
-  Compensatory Storage
-  Recommended Rock Basin, <48 Hour Drawdown
-  Recommended Rock Basin, >48 Hour Drawdown
-  Recommended Infiltration Area
-  Existing Wet Basin
-  Streams
-  Recommended Grass Swale
-  Recommended Bioswale
-  Runoff Direction
- BMP Treatment Train**
-  Bioswale
-  Bioswale - Basin
-  Bioswale - Rock Basin
-  Bioswale - Wet Basin
-  Grass Swale
-  Grass Swale - Basin
-  Grass Swale - Rock Basin
-  Grass Swale - Wet Basin
-  Low Treatment Grass Swale
-  Basin
-  Rock Basin
-  Wet Existing Basin
-  Existing Drainage System



Exhibit 13
Water Quality BMPs
2040 Full Build
September 19, 2012



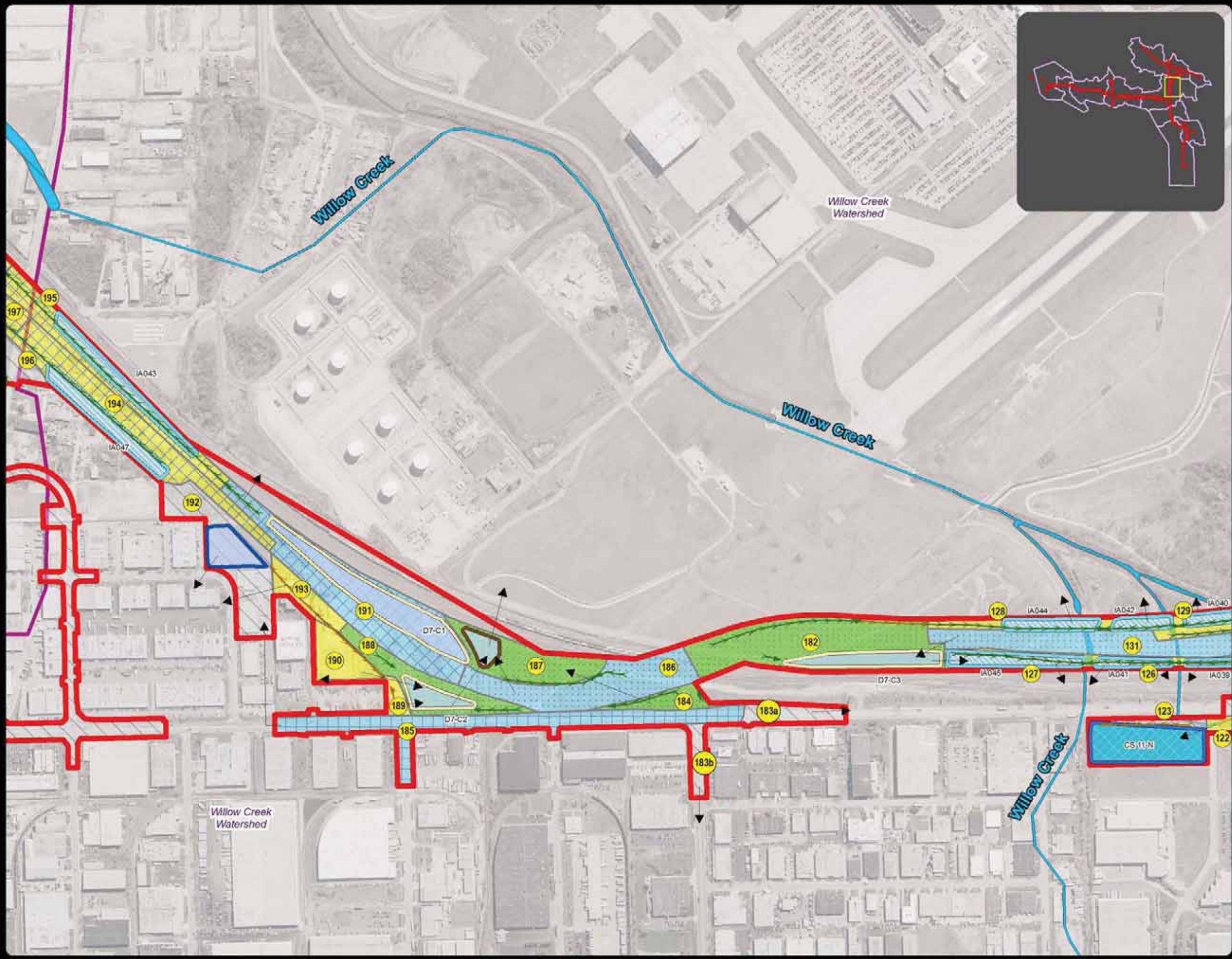


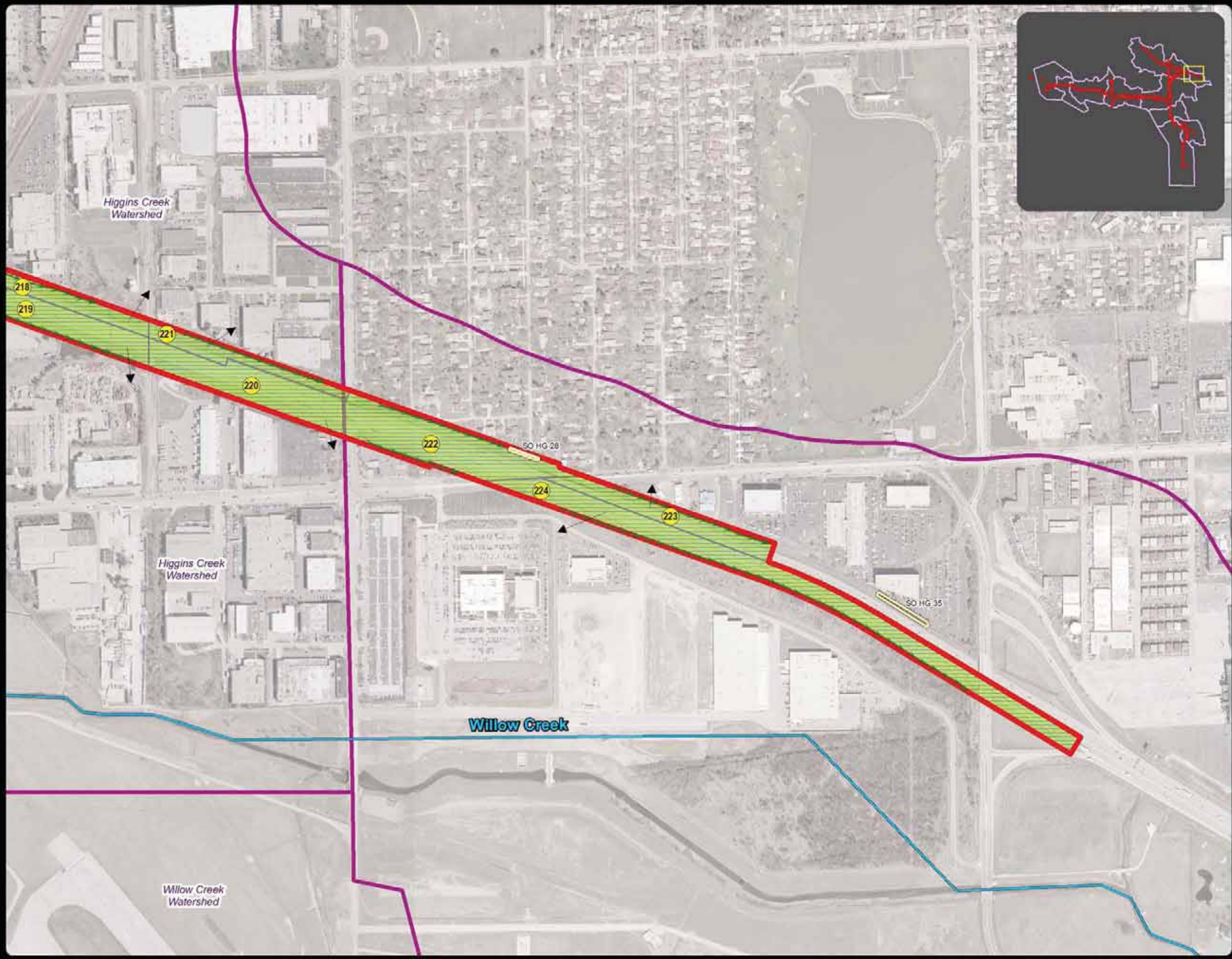
LEGEND

- Full Build 2040 Footprint
- Watershed Boundary
- Compensatory Storage
- Recommended Rock Basin, <48 Hour Drawdown
- Recommended Rock Basin, >48 Hour Drawdown
- Recommended Infiltration Area
- Existing Wet Basin
- Streams
- Recommended Grass Swale
- Recommended Bioswale
- Runoff Direction
- BMP Treatment Train**
- Bioswale
- Bioswale - Basin
- Bioswale - Rock Basin
- Bioswale - Wet Basin
- Grass Swale
- Grass Swale - Basin
- Grass Swale - Rock Basin
- Grass Swale - Wet Basin
- Low Treatment Grass Swale
- Basin
- Rock Basin
- Wet Existing Basin
- Existing Drainage System



Exhibit 14
Water Quality BMPs
2040 Full Build
September 19, 2012





LEGEND

- Full Build 2040 Footprint
- Watershed Boundary
- Compensatory Storage
- Recommended Rock Basin, <48 Hour Drawdown
- Recommended Rock Basin, >48 Hour Drawdown
- Recommended Infiltration Area
- Existing Wet Basin
- Streams
- Recommended Grass Swale
- Recommended Bioswale
- Runoff Direction
- BMP Treatment Train**
- Bioswale
- Bioswale - Basin
- Bioswale - Rock Basin
- Bioswale - Wet Basin
- Grass Swale
- Grass Swale - Basin
- Grass Swale - Rock Basin
- Grass Swale - Wet Basin
- Low Treatment Grass Swale
- Basin
- Rock Basin
- Wet Existing Basin
- Existing Drainage System



Exhibit 15
Water Quality BMPs
2040 Full Build
September 19, 2012

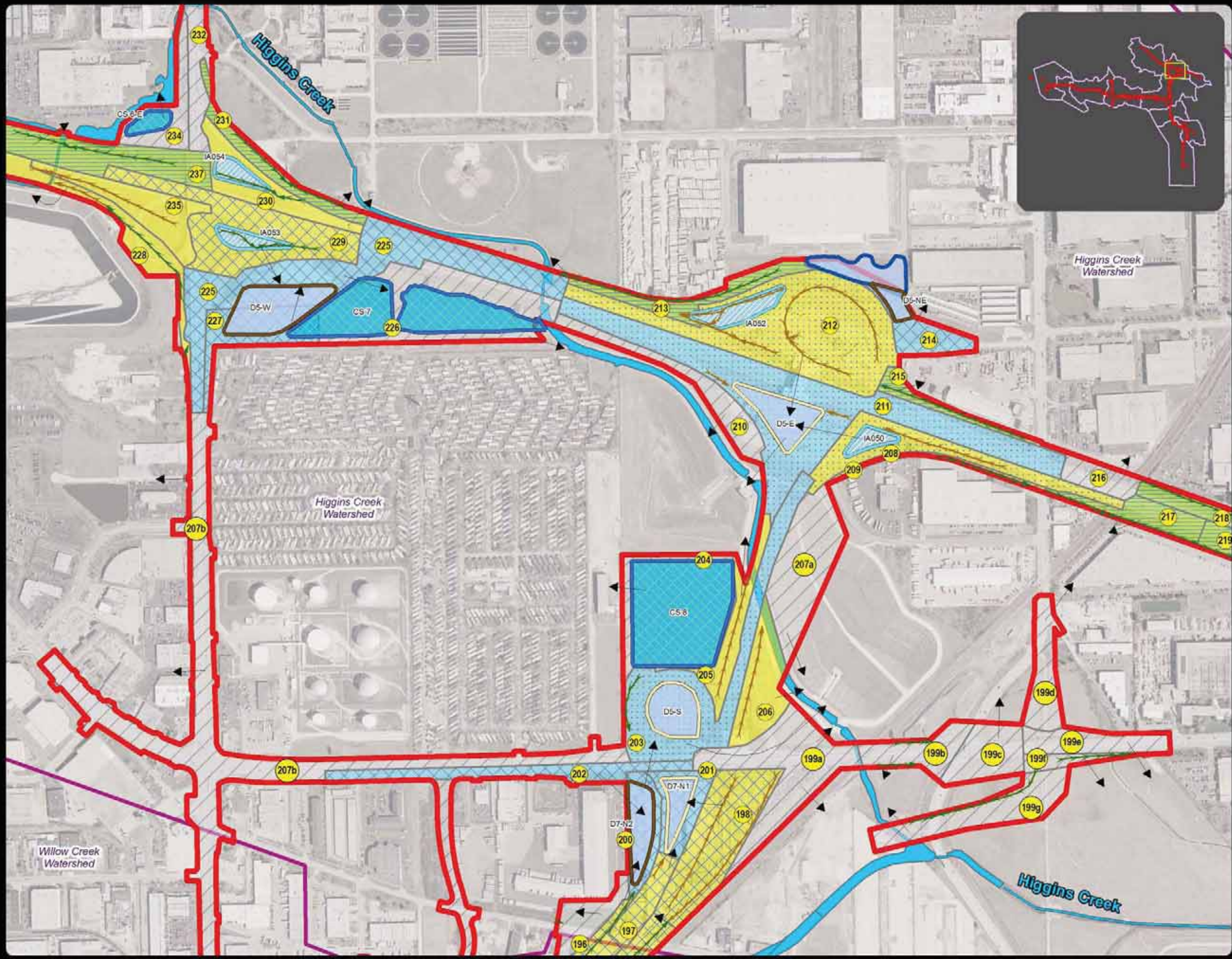


LEGEND

- Full Build 2040 Footprint
- Watershed Boundary
- Compensatory Storage
- Recommended Rock Basin, <48 Hour Drawdown
- Recommended Rock Basin, >48 Hour Drawdown
- Recommended Infiltration Area
- Existing Wet Basin
- Streams
- Recommended Grass Swale
- Recommended Bioswale
- Runoff Direction
- BMP Treatment Train**
- Bioswale
- Bioswale - Basin
- Bioswale - Rock Basin
- Bioswale - Wet Basin
- Grass Swale
- Grass Swale - Basin
- Grass Swale - Rock Basin
- Grass Swale - Wet Basin
- Low Treatment Grass Swale
- Basin
- Rock Basin
- Wet Existing Basin
- Existing Drainage System



Exhibit 16
Water Quality BMPs
2040 Full Build
September 19, 2012



LEGEND


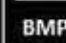

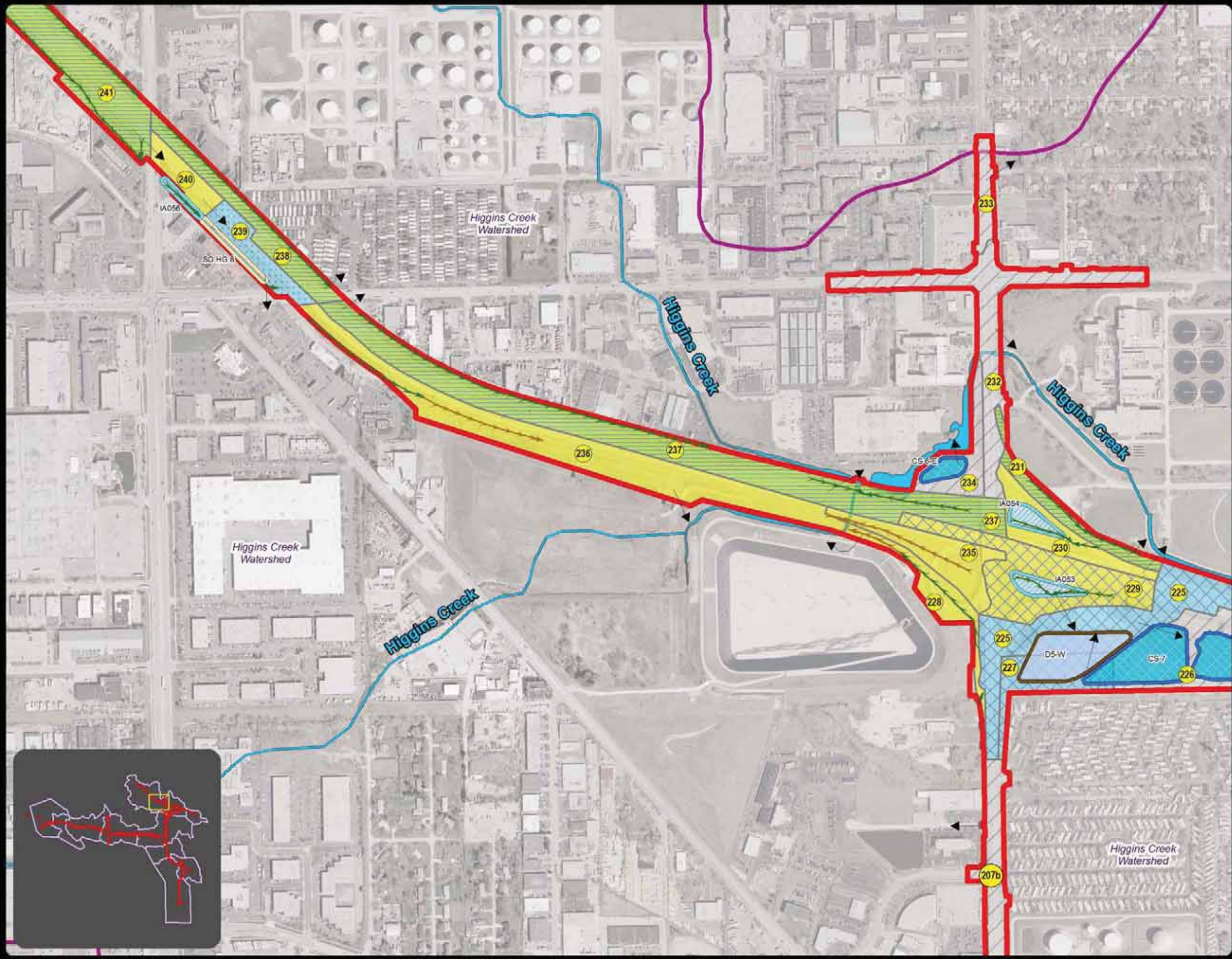
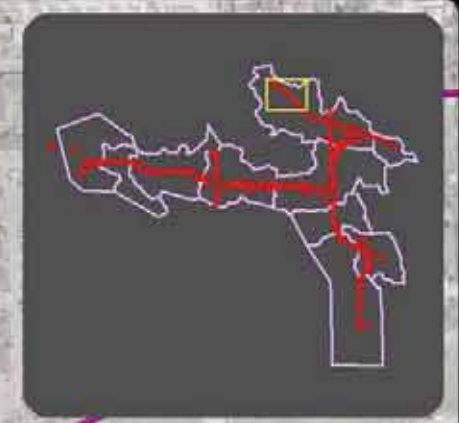
-  Full Build 2040 Footprint
-  Watershed Boundary
-  Compensatory Storage
-  Recommended Rock Basin, <48 Hour Drawdown
-  Recommended Rock Basin, >48 Hour Drawdown
-  Recommended Infiltration Area
-  Existing Wet Basin
-  Streams
-  Recommended Grass Swale
-  Recommended Bioswale
-  Runoff Direction
- BMP Treatment Train**
-  Bioswale
-  Bioswale - Basin
-  Bioswale - Rock Basin
-  Bioswale - Wet Basin
-  Grass Swale
-  Grass Swale - Basin
-  Grass Swale - Rock Basin
-  Grass Swale - Wet Basin
-  Low Treatment Grass Swale
-  Basin
-  Rock Basin
-  Wet Existing Basin
-  Existing Drainage System



Exhibit 17
Water Quality BMPs
2040 Full Build
September 19, 2012





LEGEND

- Full Build 2040 Footprint
- Watershed Boundary
- Compensatory Storage
- Recommended Rock Basin, <48 Hour Drawdown
- Recommended Rock Basin, >48 Hour Drawdown
- Recommended Infiltration Area
- Existing Wet Basin
- Streams
- Recommended Grass Swale
- Recommended Bioswale
- Runoff Direction
- BMP Treatment Train**
- Bioswale
- Bioswale - Basin
- Bioswale - Rock Basin
- Bioswale - Wet Basin
- Grass Swale
- Grass Swale - Basin
- Grass Swale - Rock Basin
- Grass Swale - Wet Basin
- Low Treatment Grass Swale
- Basin
- Rock Basin
- Wet Existing Basin
- Existing Drainage System



Exhibit 18
Water Quality BMPs
2040 Full Build
September 19, 2012

