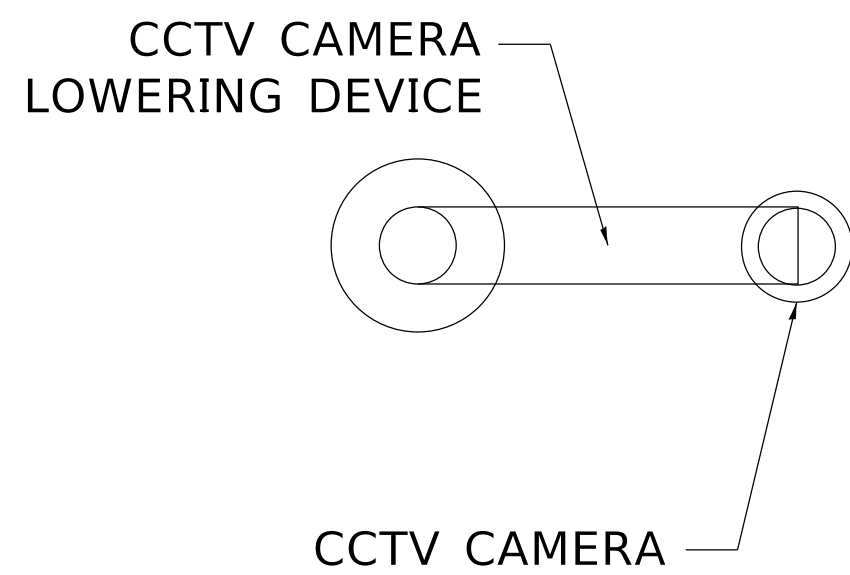
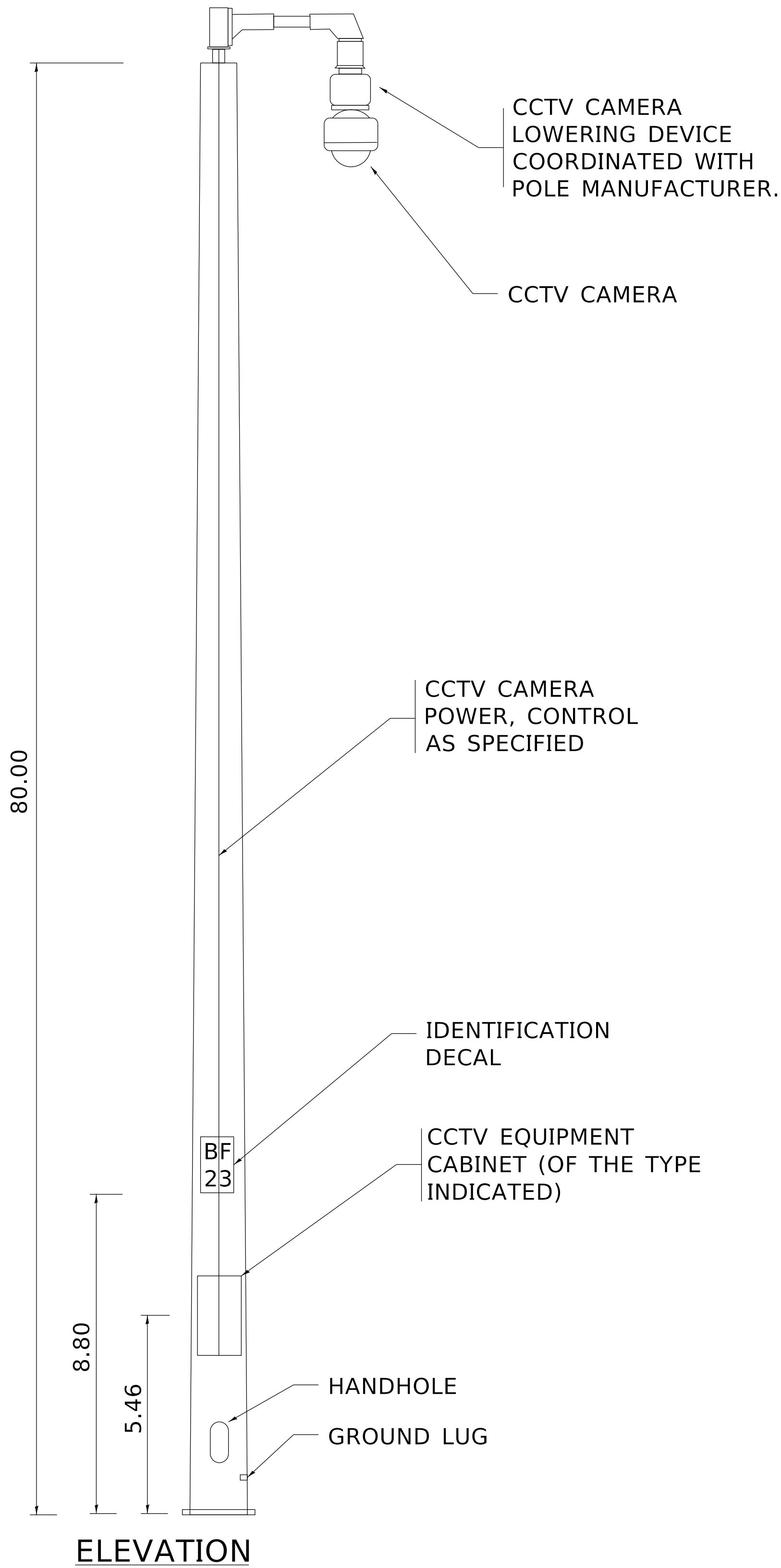


MODEL: Default  
FILE: Main.ctb  
Path: C:\Program Files\Autodesk\AutoCAD 2019\Templates\11x17.dwt  
Project: D:\Projects\Illinois\DOT\Office\District 1\Projects\Bldg\Bldg23\Bldg23.dgn  
User: jtomson



MAINLINE  
INTERSTATE

#### GENERAL NOTES:

1. LOCATIONS OF THE CCTV CAMERA INSTALLATIONS ARE APPROXIMATE. THE CONTRACTOR MAY ADJUST THE LOCATIONS OF THE INSTALLATIONS TO FACILITATE INSTALLATION WITH WRITTEN APPROVAL OF THE RESIDENT ENGINEER AND THE ELECTRICAL DESIGN SECTION. ALL STANDARD NON-FRANGIBLE SETBACK REQUIREMENTS AS WELL AS CLEAR ZONE REQUIREMENTS SHALL BE MAINTAINED.
2. THE POLE SHALL BE A MAXIMUM OF THREE SECTIONS FOR FIELD ASSEMBLY.
3. THE POLE SHAFTS SHALL BE A ROUND CROSS SECTION. THE BOTTOM SECTION SHALL HAVE A MINIMUM .3125 WALL THICKNESS AND A MINIMUM DIAMETER THE TOP AND BOTTOM TO PREVENT CONDENSATION BUILDUP ON THE INTERIOR OF THE POLE SHAFT.
4. CABLE SUPPORTS SHALL BE PROVIDED FOR ALL CABLES INSIDE OF POLE SO THAT NO CABLE LOADING IS EXCEEDED. CALCULATIONS SHALL BE SUBMITTED FOR THE CABLES BEING FURNISHED.
5. ALL EQUIPMENT SHALL BE GROUNDED.
6. DOCUMENTATION SHALL BE SUBMITTED THAT THE POLE IS FULLY COORDINATED WITH THE CAMERA LOWERING DEVICE.
7. ALL CABLES, INCLUDING LOWERING DEVICE CABLES, SHALL BE WITHIN THE POLE SHAFT. EXTERNAL CABLING WILL NOT BE PERMITTED.
8. UNLESS OTHERWISE INDICATED, OR AS DIRECTED BY THE ENGINEER, THE CAMERA LOWERING DEVICE SHALL BE ORIENTED PERPENDICULAR TO THE MAINLINE INTERSTATE FOR THE LEAST OBSTRUCTED VIEW OF THE INTERSTATE ROADWAY.

MATERIAL REQUIREMENTS		
COMPONENT	ASTM DESIGNATION	MIN. YIELD (KSI)
POLE SHAFT	A572, OR A1011	50
BASE PLATE	A572, OR A1011	50
POLE TOP PLATE	A572, OR A1011	50
ANCHOR BOLTS	F1554	55
GALVANIZING, STRUCTURE	A123	N/A
GALVANIZING, HARDWARE	A153	N/A

	USER NAME = footemj	DESIGNED - R. Tomsons	REVISED -	STATE OF ILLINOIS DEPARTMENT OF TRANSPORTATION	CCTV CAMERA STRUCTURE, 80 FT. MOUNTING HEIGHT				F.A. RTE.	SECTION	COUNTY	TOTAL SHEETS	SHEET NO.
		DRAWN -	REVISED -										
	PLOT SCALE = 50.0000 ' / in.	CHECKED -	REVISED -		SCALE: NONE		SHEET 1 OF 1 SHEETS	STA.	TO STA.	BE 1002		CONTRACT NO.	
	PLOT DATE = 4/22/2019	DATE - 04/17/2017	REVISED -							ILLINOIS	FED. AID PROJECT		