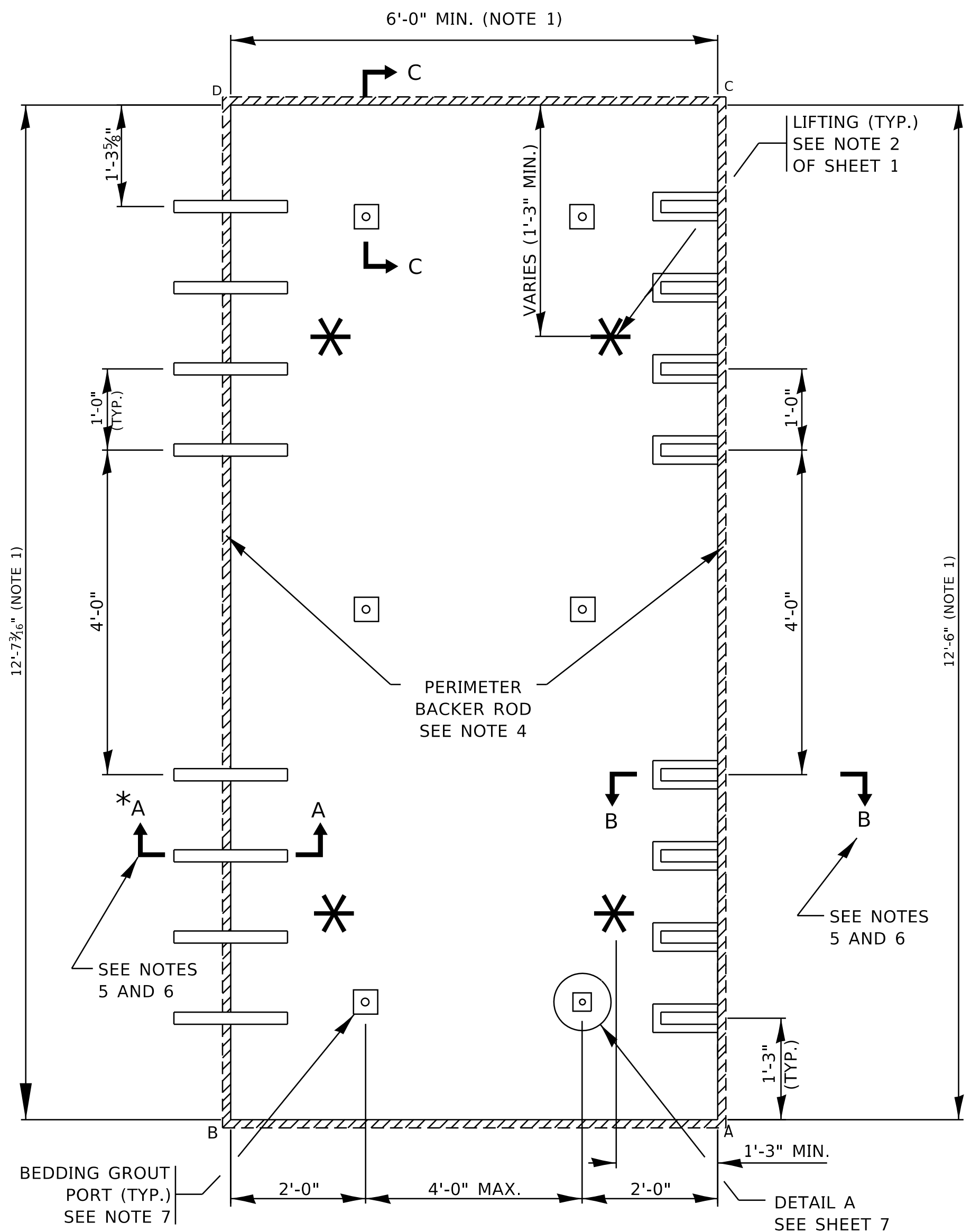


STANDARD 12'-6" WIDE PANEL LAYOUT FOR ISOLATED PLACEMENT
WITH EMBEDDED DOWELS FOR PRECUT WIDE MOUTH
SLOTS IN ADJACENT PAVEMENT

NOTES:

- THE WIDTH AND LENGTH OF PRODUCED SLABS SHALL BE THE INDICATED DIMENSIONS ON THE PLANS $\pm \frac{1}{8}$ ".
- FOR MIDDLE LANE SLAB OPENINGS/PATCHES LESS THAN 12'-6" IN WIDTH AND GREATER THAN 11'-6" IN WIDTH, THE STANDARD PERCAST SLAB CAN BE SAW CUT ON-SITE TO FIT THE OPENING AND TO MAINTAIN ALIGNMENT WITH EXISTING LONGITUDINAL JOINTS. OTHERWISE, THE SLAB PATCH LOCATION MUST BE PRESURVEYED BY THE CONTRACTOR AND THE SLAB FABRICATED AS A CUSTOM SLAB.
- SLAB THICKNESS SHALL BE AS INDICATED IN THE PLANS.
- A FOAM BACKER ROD SHALL BE PLACED AROUND THE OUTSIDE PERIMETER OF THE SLAB AT THE BOTTOM OF THE JOINTS BEFORE THE SLAB HAS BEEN SET AND BEFORE BEDDING GROUT OR POLYURETHANE LEVELING FILL IS APPLIED. THE BACKER ROD SHALL NOT BE REQUIRED WHEN ANY SLAB IS LEVELED WITH FLOWABLE FILL.
- SEE SHEET 7 FOR SECTION DETAILS.
- IT SHALL BE THE CONTRACTOR'S OPTION TO REPLACE ANY EMBEDDED DOWEL BARS OR PREFORMED SLOTS AS SHOWN ON THESE DRAWINGS WITH FULLY RETROFITTED DOWEL BARS FIELD INSTALLED IN ACCORDANCE WITH "DETAIL C" OF SHEET 13. THE CONTRACTOR SHALL USE AN APPROVED TEMPLATE TO LOCATE THE SAW CUTS REQUIRED FOR PROPER SPACING AND RETROFITTING OF THE DOWEL BARS IN ACCORDANCE WITH THESE DRAWINGS. DIAMOND BLADED GANG SAWS SHALL BE USED TO MAKE SAW CUTS PERPENDICULAR TO THE TRANSVERSE (NONSKEWED) JOINT LINE TO ALLOW FOR DOWEL BAR PLACEMENTS WITHIN THE SPECIFIED TOLERANCES.
- SEE NOTE 8 ON SHEET 1 FOR LOCATING BEDDING GROUT PORTS.



STANDARD 12'-6" WIDE PANEL LAYOUT FOR CONSECUTIVE PLACEMENT

* FOR INTERNAL CONSECUTIVE SLABS, PREFORMED SLOTS IN ACCORDANCE WITH SECTION B-B OF SHEET 4 MAY BE USED IN-PLACE OF EMBEDDED DOWELS OR OF FIELD RETROFITTED DOWEL BARS WITH SAWCUT SLOTS. ALL PREFORMED SLOTS MUST BE FILLED BEFORE BEING OPENED TO TRAFFIC.

MODEL: Default
FILE NAME: p:\planroom.dot\illinois.gov\PIV\DOT\Documents\DOT Offices\District 1\Projects\Bldg5d22\3A\CADData\CADsheets\bd57.dgn

| | | | | | | | | | | | | | | |
|--|--------------------------------|---------------------------|--------------------------|---|---------------------------------|--|------------------|-----------|-----------|---------|--------|--------------|-----------|--|
| | USER NAME = footemj | DESIGNED - O. PATEL | REVISED - D.G. 6-14 | STATE OF ILLINOIS DEPARTMENT OF TRANSPORTATION | PRECAST CONCRETE PAVEMENT SLABS | | | | F.A. RTE. | SECTION | COUNTY | TOTAL SHEETS | SHEET NO. | |
| | | DRAWN - | REVISED - D.G. 9-16 | | | | | | | | | | | |
| | PLOT SCALE = 50.0000 ' / in. | CHECKED - | REVISED - D.G. 8-19 | | SCALE: NONE | | | SHEET 4 | OF 19 | SHEETS | STA. | TO STA. | | |
| | PLOT DATE = 8/15/2019 | DATE - 10-25-2013 | REVISED - | | | | | | | | BD 57 | | | |
| | | | | | ILLINOIS | | FED. AID PROJECT | | | | | | | |