

QMP Package
Import Template Instructions

The instructions on pages 2 & 3 will help you Import and Update All Templates from previous QMP Packages. Page 4 outlines how to import your Agg History Database. Pages 5-11 provide instructions on how to individually import Templates for the various Programs listed below.

Page 2 Import All Templates from older Package

Page 3 Update All Templates

Page 4 Import 2023 Agg History Database

The next pages are for individually importing previous Package Templates and do not need to be done if Importing All instructions from above where followed.

Page 5 Import HMA Daily Plant Package Templates

Page 7 Import Aggregate Templates

Page 9 Import Density Templates

Page 11 Import Concrete Field & Strength Reports

QMP Package Import Template Instructions

Instructions for IMPORTING All (Previous QMP/QCQA Package) Templates (This is used only when the Newer 2016 QCQA Package is installed)

After installing the new QMP Package 2024 or QMP Package 2024 updates you will want to get all the previous Templates for the various Programs imported into the new version of the QMP Package.

The first thing you want to do is open the 2024 QMP Package Menu and navigate to a worksheet tab called “Tools Menu” There you will find the necessary steps to import your older Templates into the new 2024 Package.

Step 1: You must choose the location of your older Templates by clicking the Browse... button. Be sure to select a “Templates” folder in any of the various AGG, HMA or PCC programs. *In this step you are telling the Program where your older Templates are to be copied from.*

Step 2: Select the Product AGG, HMA or PCC and choose the proper Template (i.e. Density, Field Strengths, and Stockpiles) *in this step you are telling the Program where to copy the old Templates to.*

Step 3: Click Import! (Read note below)

Import Older Templates to New QCQA Package

STEP 1: Choose Location of Templates by clicking Browse
(Only select Templates from older versions of the QCQA Package for Step 1)
Location:

STEP 2: Select Product and Template Location
(This is for the Newly Installed QCQA Package for Template import)
(A) Select Product
(B) Choose Template

STEP 3: Import and Update Templates

Install Add-ins
 Click the box to Install TeamViewerQS.exe

QCQA Package Documents
 QCQA Package Import Templates Instructions 2014.doc
 QCQA Package Installation Instructions 2014.doc
 QCQA Package Update Documentation.xlsx

Import Agg History Database from previous version.
Choose Location of HISTORY folder by clicking Browse
(Select the HISTORY folder from the previous year's QCQA Package)
Location:

Note ** You will be prompted to update the newly imported Templates. You may choose No but you *must* update your Templates at some point to ensure that you are using the latest version. If you chose No then proceed to page 3 titled “Update All Templates” when you are ready to update.

QMP Package Import Template Instructions

Instructions for Updating All Templates

(This is used only when there is an Update to the Package)

When the QMP Package is updated (or you imported previous Templates without updating i.e. Page 2) all Templates must be updated to reflect any changes made to the Master File during the Update process. All Programs that have Templates saved will have an Update Templates on the Main QMP Package Menu as seen below. Simply click the Update Templates for the Programs used.

QCQA DAILY TESTING AND SAMPLING MENU FOR HMA ⓘ

March 31, 2015 6:10 PM Menu Ver. 11.00-03.20.15

LAB MIXTURE DESIGNS	HMA PANT WORKSHEETS	DENSITY WORKSHEETS	AGGREGATE STOCKPILES
Create Mix Design	Create Plant Template	Create Density Template	Create Agg Template
Open Mix Design	Open Plant Template	Open Density Template	Open Agg Template
	Open Plant Report	Open Core Density	Open Agg Stockpile
	Open Mix Tracking	Open Nuc Density	Open Agg History
	Update Templates	Update Templates	Update Templates
	Mix Change Log		

HAMBURG WHEEL SAMPLING	PLANT CALIBRATIONS	PAY FOR PERFORMANCE	QUALITY CONTROL PERFORMANCE
Create WT Report	Create Drum Calibration	Create Random Density	Create Random Density
Open WT Report	Create Batch Calibration	Create Random Mix	Create Random Mix
Hamburg Lab ID Sheet	Open Calibartion	Create PWL Report	Create QCP Report
Set Up WT Computer		Open Random Density	Open Random Density
		Open Random Mix	Open Random Mix
		Open PWL Report	Open QCP Report

NUC CORE CORRELATION	QCQA Tables
Create Correlation	Contract Table
Open Correlation	

QCQA CONTROL CHARTS
Create Control Chart
Open Control Chart

EXIT

QMP Package Import Template Instructions

Instructions for IMPORTING AGG History Database (AggHDB)

(This is used only when the Newer 2016 QCQA Package is installed)

Open the 2024 QMP Package Menu and navigate to a worksheet tab called "Tools Menu" There you will find the necessary steps to import the AggHDB from last previous version of the QMP Package.

Step 1: You must choose the location of the previous year's AggHDB by clicking the Browse... button. (You are looking for the "HISTORY" folder within the previous year's QMP Package folder).

Step 2: Click Import!

Import Older Templates to New QCQA Package

STEP 1: Choose Location of Templates by clicking Browse
(Only select Templates from older versions of the QCQA Package for Step 1)
Location: **Browse...**

STEP 2: Select Product and Template Location
(This is for the Newly Installed QCQA Package for Template import)
(A) Select Product
(B) Choose Template

STEP 3: Import and Update Templates
Import

Install Add-ins
Click the box to Install
TeamViewerQS.exe

QCQA Package Documents
QCQA Package Import
Templates Instructions 2014.doc
QCQA Package Installation
Instructions 2014.doc
QCQA Package Update
Documentation.xlsx

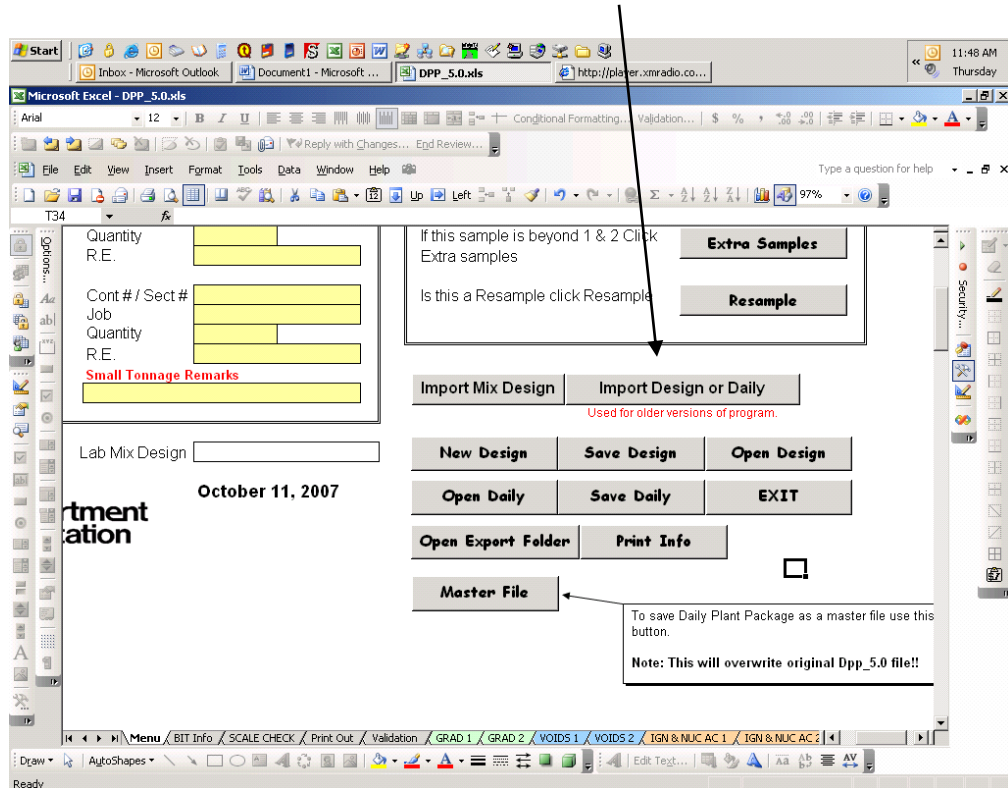
Import Agg History Database from previous version.
Choose Location of HISTORY folder by clicking Browse
(Select the HISTORY folder from the previous year's QCQA Package)
Location: **Browse...** **Import**

QMP Package Import Template Instructions

Instructions for Importing HMA Daily Plant Report Templates Information

Step 1

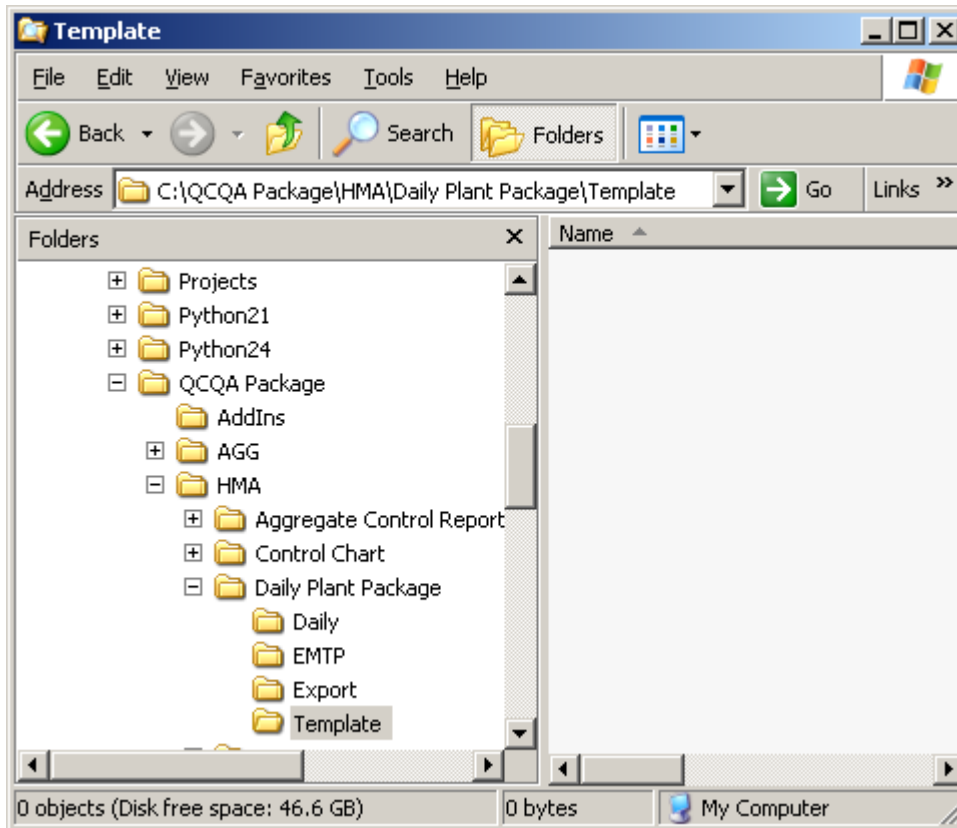
Open the Daily Plant Report Program and click the “Import Template or Daily” button.



QMP Package Import Template Instructions

Step 2

Go to file location where your Design Template or Daily is saved (This will most likely be where all 2023 Templates are located. This should be under the QMP Package Folder on the Drive that you chose to install 2024 version.) Click and open the Template or Daily that you want to import into the Daily Plant Report Program.



Step 3

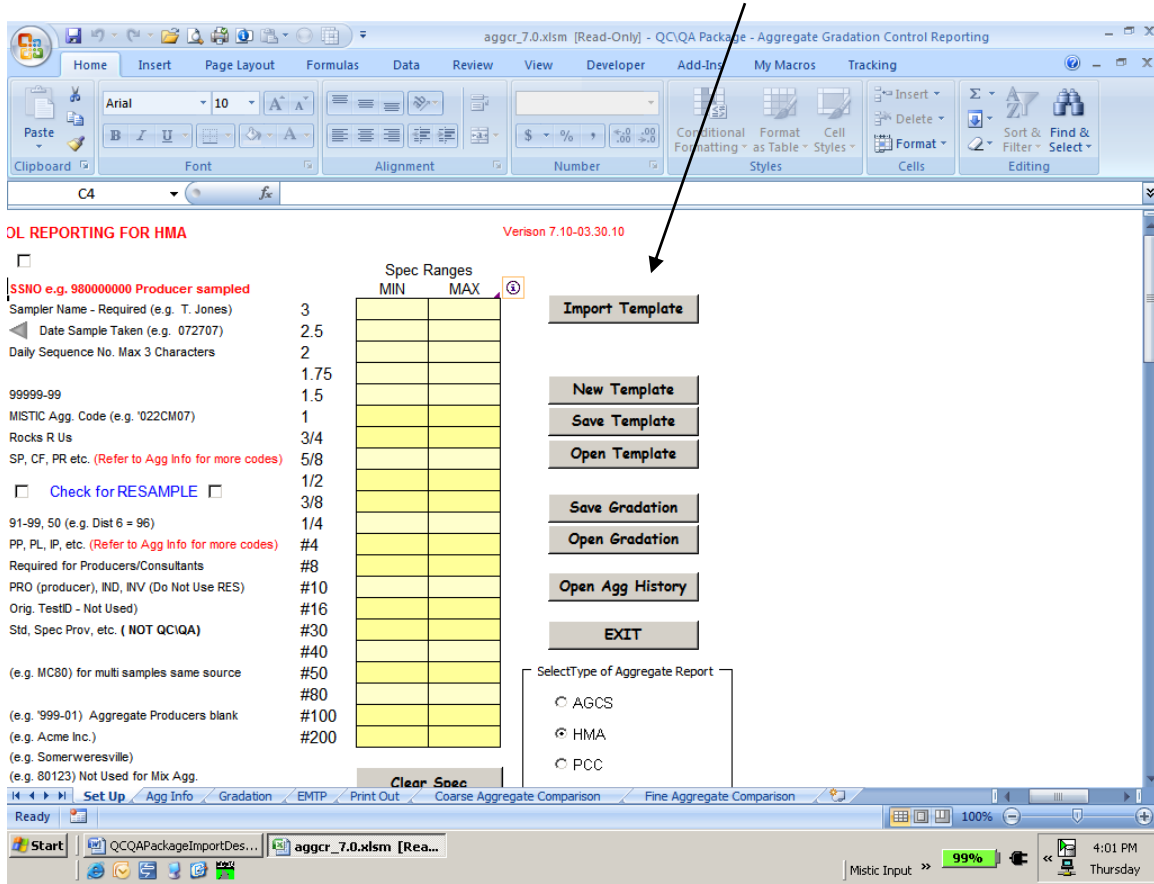
Check and make sure that all data has been imported correctly and **re-save** the Template using the Save Template button.

QMP Package Import Template Instructions

Instructions for Importing Aggregate Template Information

Step 1

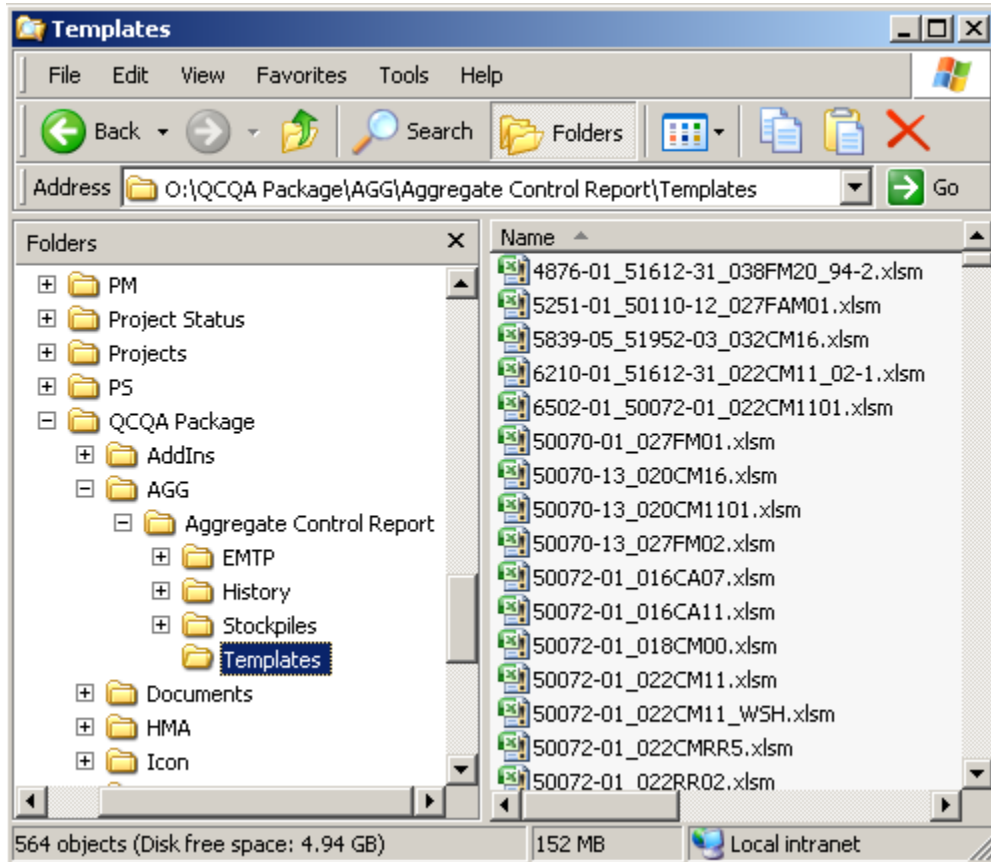
Open the AGCS Program and click the “Import Template” button.



QMP Package Import Template Instructions

Step 2

Go to file location where your Aggregate Template is saved (This will most likely be where all 2023 Templates are located. This should be under the QMP Package Folder on the Drive that you chose to install 2024 version.) Click and open the Template that you want to import into the AGCS Program.



Step 3

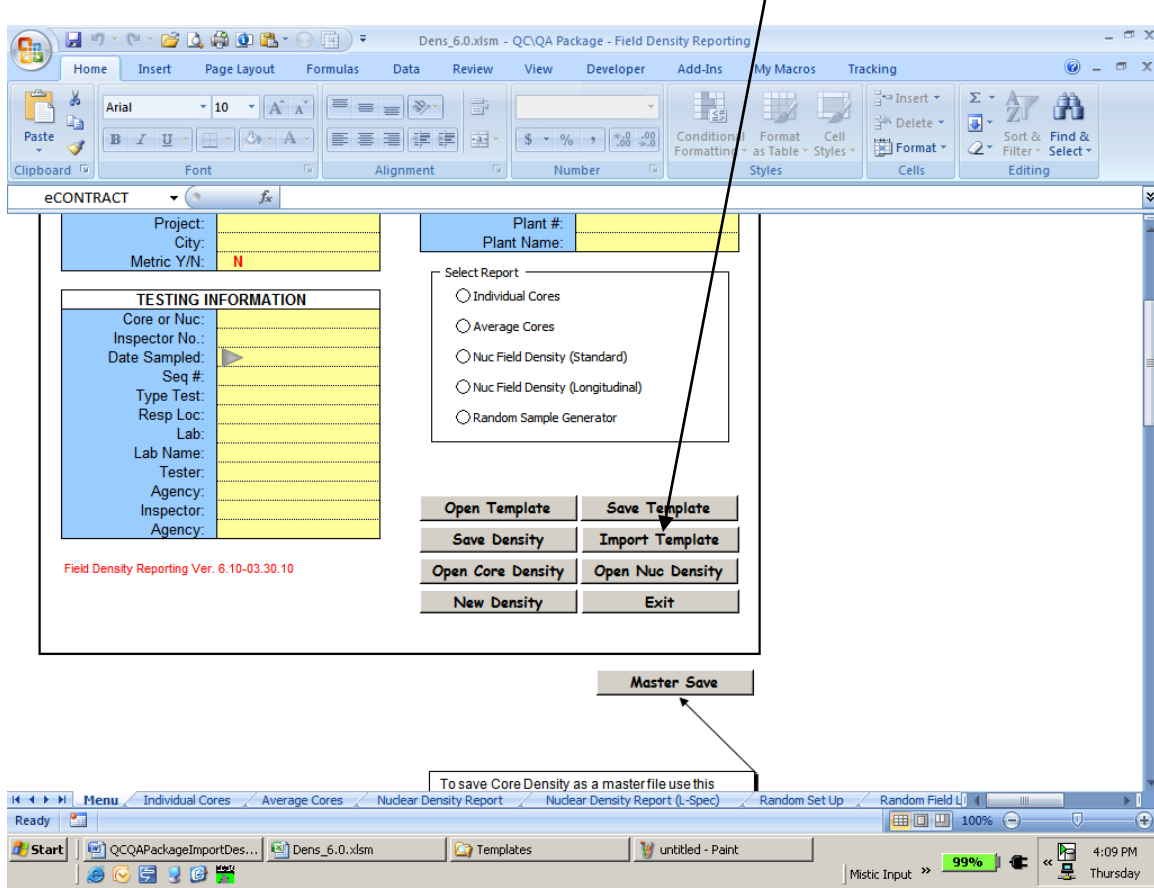
Check and make sure that all data has been imported correctly and **re-save** the Template using the Save Template button.

QMP Package Import Template Instructions

Instructions for Importing Density Template Information

Step 1

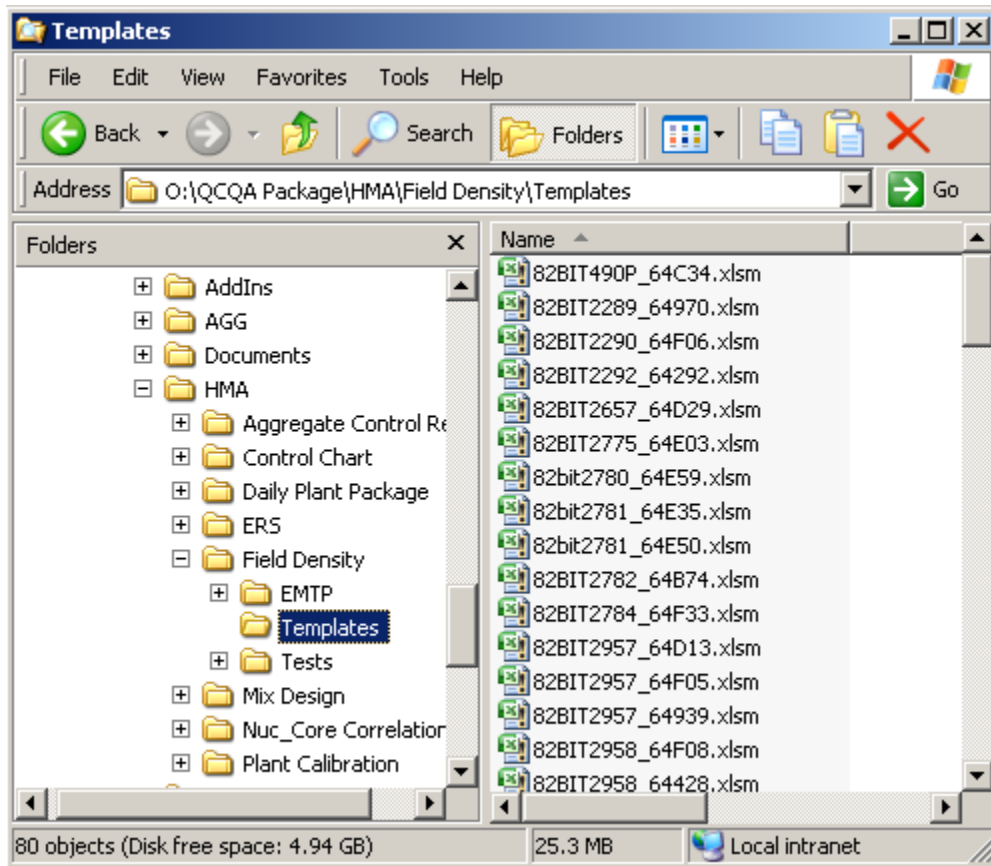
Open the Density Program and click the “Import Template” button.



QMP Package Import Template Instructions

Step 2

Go to file location where your Density Template is saved (This will most likely be where all 2023 Templates are located. This should be under the QMP Package Folder on the Drive that you chose to install 2024 version.) Click and open the Template that you want to import into the Density Program.



Step 3

Check and make sure that all data has been imported correctly and **re-save** the Template using the Save Template button.

QMP Package Import Template Instructions

Instructions for Importing Concrete Template Information

Step 1

Open either the Concrete Field Program or Concrete Strength Program and click the "Import Template" button.

P.C. Concrete Air, Slump and Quantity

PROJECT INFORMATION		TESTING INFORMATION	
Contract:	<input type="text"/>	Inspector No.:	<input type="text"/>
Job #:	<input type="text"/>	Date Reported:	<input type="text"/>
RE:	<input type="text"/>	Seq #:	<input type="text"/>
County:	<input type="text"/>	Type Test:	<input type="text"/>
Section:	<input type="text"/>	Resp Loc:	<input type="text"/>
Route:	<input type="text"/>	Lab:	<input type="text"/>
District:	<input type="text"/>	Lab Name:	<input type="text"/>
Project:	<input type="text"/>	Air Entrainment:	<input type="text"/>
City:	<input type="text"/>	Admixture:	<input type="text"/>
Metric Y/N:	<input type="text"/>		

PLANT INFORMATION		MIXTURE INFORMATION	
Producer #:	<input type="text"/>	Conc Code:	<input type="text"/>
Producer Name:	<input type="text"/>	Conc Code Name:	<input type="text"/>
Producer Location:	<input type="text"/>	Cement Code:	<input type="text"/>
Cement Producer:	<input type="text"/>		

Version 2.10-03.30.10

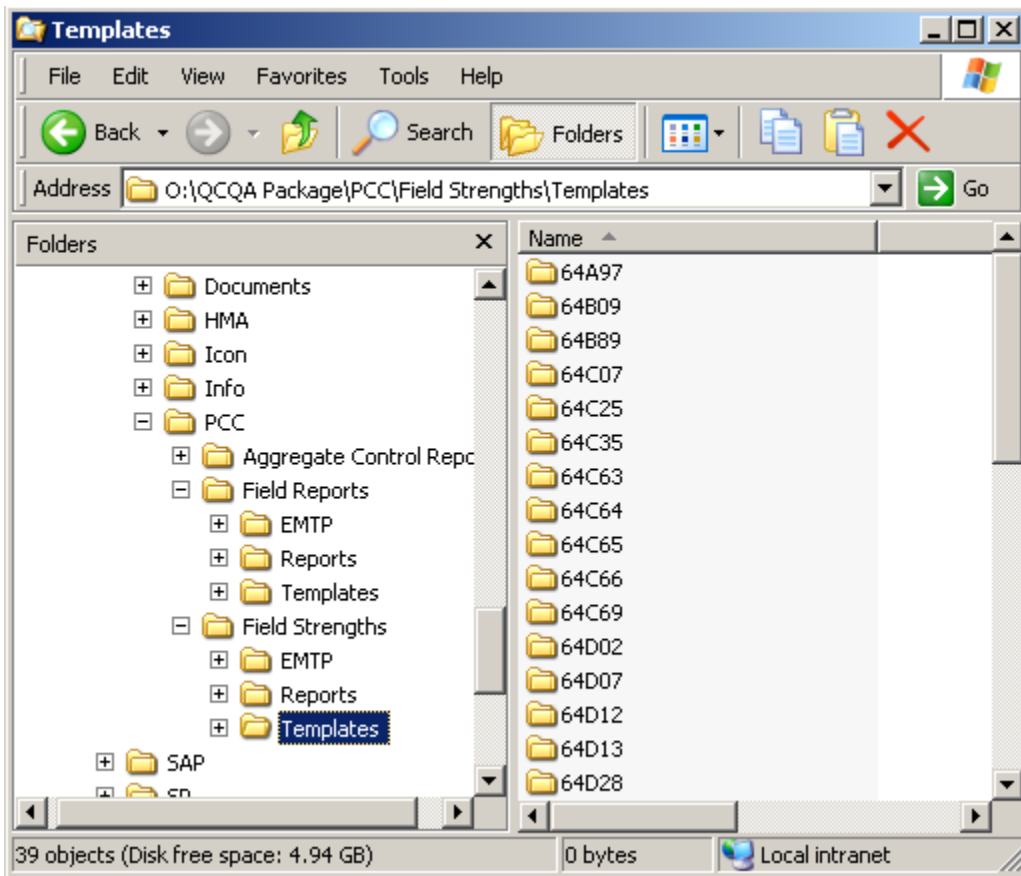
Illinois Department of Transportation

Buttons: New Report, Save Report, Save Template, Open Report, Open Template, Exit, **Import Template**

QMP Package Import Template Instructions

Step 2

Go to file location where your Concrete Template is saved (This will most likely be where all 2023 Templates are located. This should be under the QMP/QCQA Package Folder on the Drive that you chose to install 2024 version.) Click and open the Template that you want to import into the Concrete Field Program or Concrete Strength Program.



Step 3

Check and make sure that all data has been imported correctly and **re-save** the Template using the Save Template button.