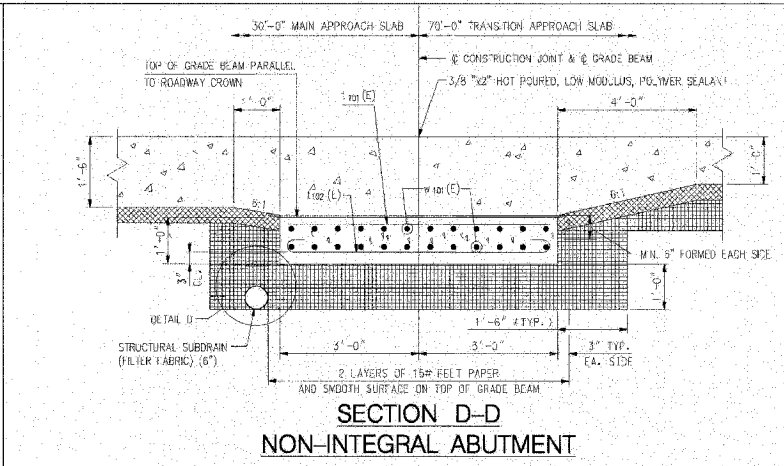
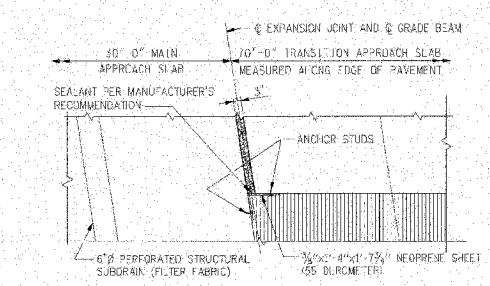


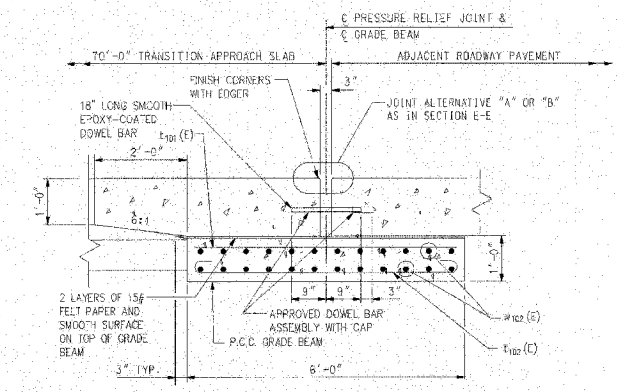
FBI RTE	SECTION	COUNTY	TOTAL SHEETS	SHEET NO.
80/94	*	COOK	870	758
STA.		TO STA.		
FED ROAD DIST. NO.		ILLINOIS	FED. AID PROJECT	



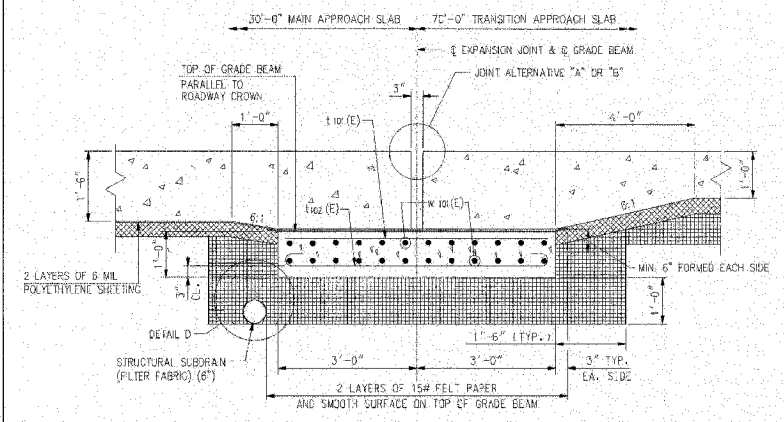
SECTION D-D
NON-INTEGRAL ABUTMENT



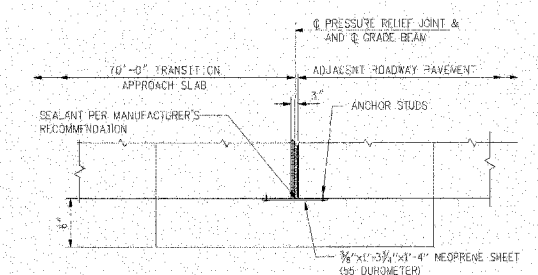
DETAIL B
END PLAN OF EXPANSION JOINT



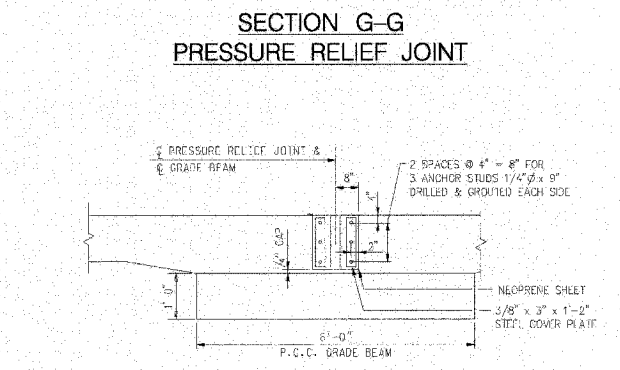
SECTION G-G
PRESSURE RELIEF JOINT



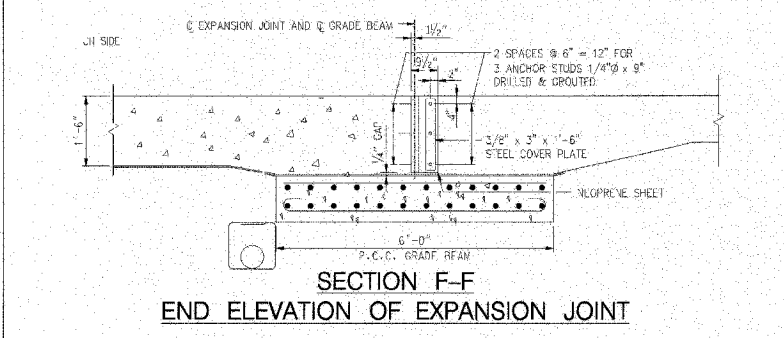
SECTION E-E
INTEGRAL & SEMI-INTEGRAL ABUTMENT



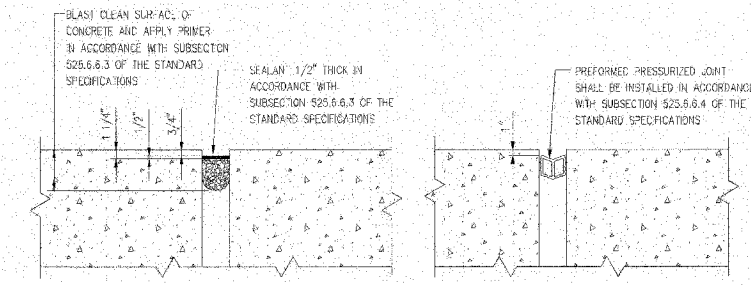
DETAIL C
END PLAN OF PRESSURE RELIEF JOINT



VIEW H-H
END ELEVATION OF PRESSURE RELIEF JOINT



SECTION F-F
END ELEVATION OF EXPANSION JOINT



JOINT ALTERNATIVE "A" JOINT ALTERNATIVE "B"

- LEGEND:**
- CONCRETE
 - BITUMINOUS SHOULDER
 - BITUMINOUS BASE COURSE, SPECIAL
 - AGGREGATE BASE COURSE, SPECIAL
 - JOINT SEALANT
 - PREFORMED JOINT FILLER
- NOTES:**
- FOR REINFORCEMENT BARS IN APPROACH SLABS, SEE SHEETS 1 & 2 AND STANDARDS ST XX-5, ST XX-6, ST XX-7, & ST XX-8.
 - IN SECTION F-F AND VIEW H-H, ANCHOR STUDS SHALL BE INSTALLED IN ACCORDANCE WITH SECTION 1161 OF THE STANDARD SPECIFICATIONS. STEEL PLATES, BOLTS, NUTS AND WASHERS SHALL BE GALVANIZED.
 - THE THICKNESSES OF BITUMINOUS BASE COURSE, SPECIAL AND AGGREGATE BASE COURSE, SPECIAL SHALL BE THE SAME AS THEY ARE FOR THE ADJACENT PAVEMENT SECTIONS.

SHEET 3 OF 5

 APPROVED JOHN P. WAGONER DATE: 8-16-2004	 CONSOLE ENGINEERING ENVIRONMENTAL ENGINEERS, INC.	 THE ILLINOIS STATE TOLL HIGHWAY AUTHORITY 2700 OGDEN AVENUE DOWNERS GROVE, ILLINOIS 60515	REVISIONS NO. DATE DESCRIPTION	STANDARD ST 04-14 APPROACH SLAB, RAMP, SECTIONS AND DETAILS	DRAWING NO. G24 OF

REVISIONS	
NAME	DATE

ILLINOIS DEPARTMENT OF TRANSPORTATION
 I-94 EAST BOUND / IL 394 SOUTH BOUND

**ISHTA STANDARD ST 04-14
 APPROACH SLAB, RAMP,
 SECTIONS AND DETAILS**

HORIZ SCALE:
 VERT SCALE:
 DATE: JUL 18, 2005

DRAWN BY: LK
 CHECKED BY: PY

HNTB