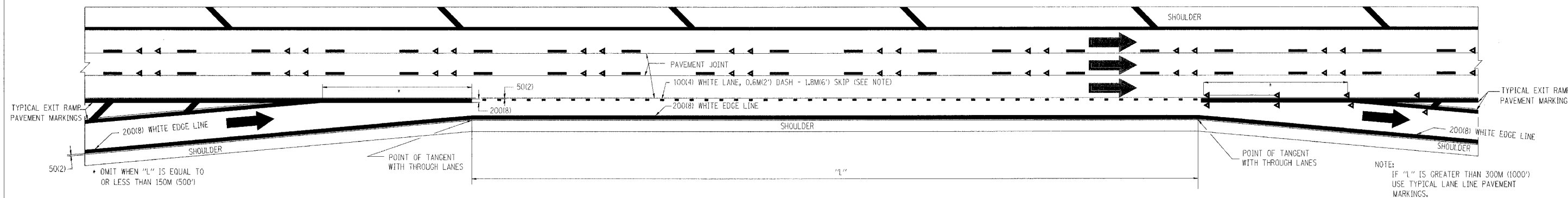
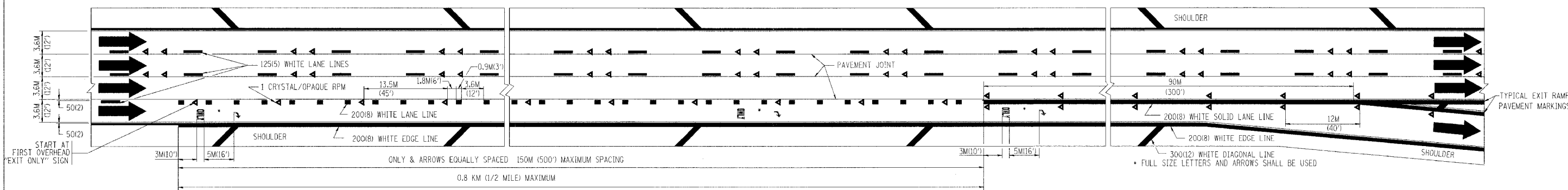


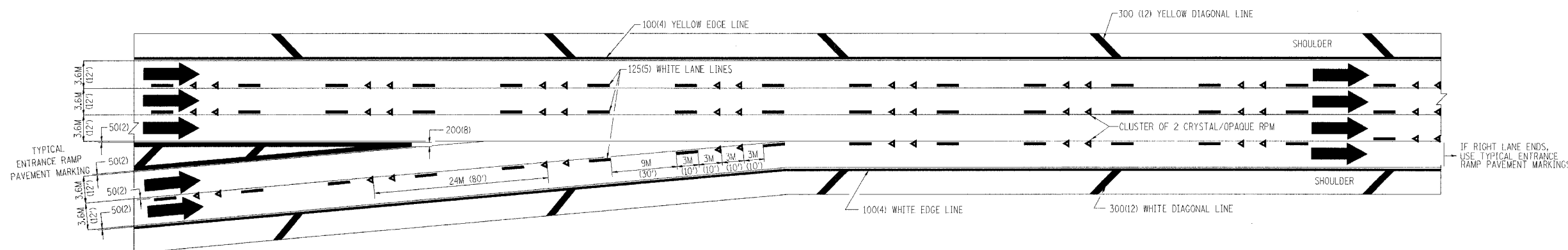
K. A. L. PILE	SECTION	COUNTY	TOTAL SHEETS	SHEET NO.
80/94		COOK	870	744
STA.	TO STA.			
FED. ROAD DIST. NO. 1	ILLINOIS	FED. AID PROJECT		
10203.1 & 0312-708W) R-3		CONTRACT NO. 62108		



TYPICAL ENTRANCE/EXIT RAMP COMBINATION PAVEMENT MARKINGS



TYPICAL EXIT ONLY LANE PAVEMENT MARKINGS



TYPICAL TWO LANE ENTRANCE RAMP PAVEMENT MARKINGS

•DATE-TIME•
•DCN-SPEC•
VI-TC12

REVISIONS	
NAME	DATE
DWS	1/90
DWS	5/91

ILLINOIS DEPARTMENT OF TRANSPORTATION

**MULTI-LANE FREEWAY
PAVEMENT MARKING
DETAILS**

SCALE: NONE
DATE: **DATE**

DRAWN BY C.A.D.D.
CHECKED BY