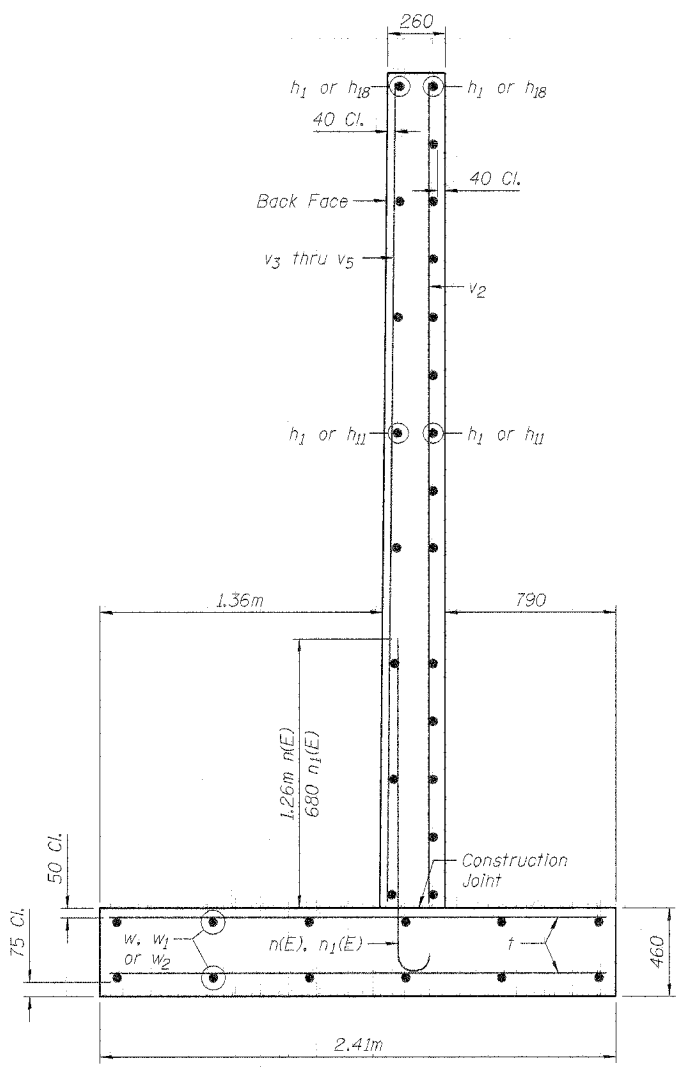
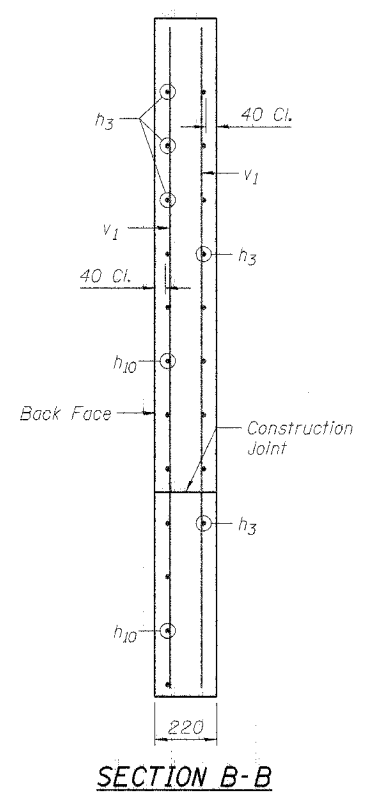


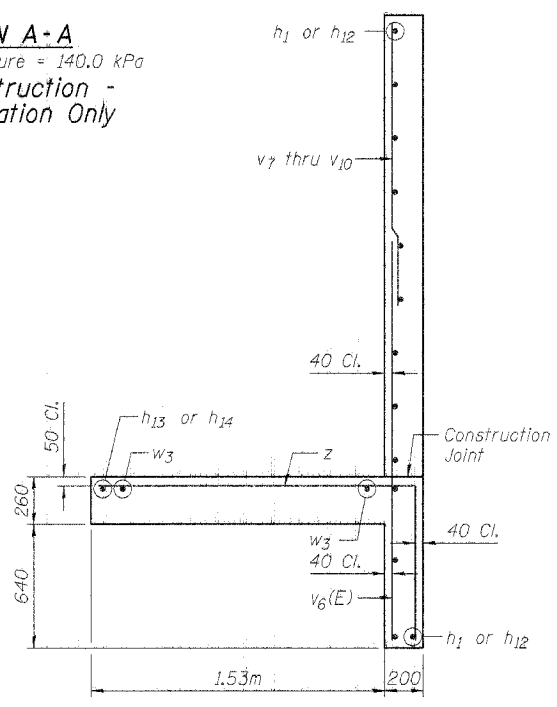
STATE OF ILLINOIS  
DEPARTMENT OF TRANSPORTATION



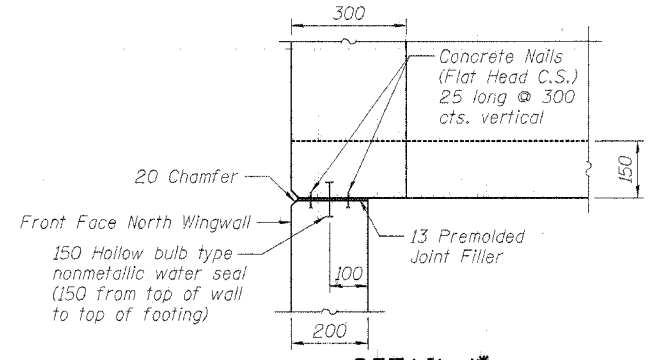
**SECTION A-A**  
Maximum Soil Pressure = 140.0 kPa  
WB Reconstruction -  
For Information Only



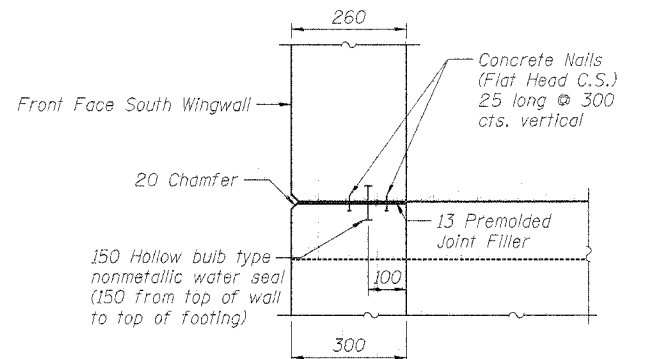
**SECTION B-B**



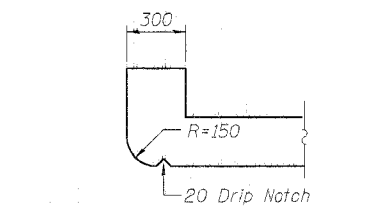
**SECTION D-D**  
Maximum Soil Pressure = 137.2 kPa  
WB Reconstruction -  
For Information Only



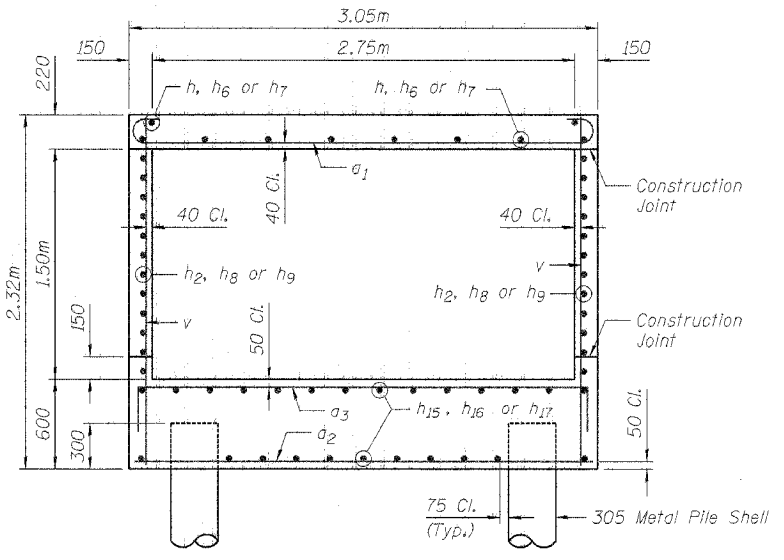
**DETAIL 1\***



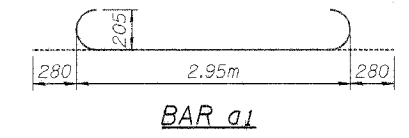
**DETAIL 2\***



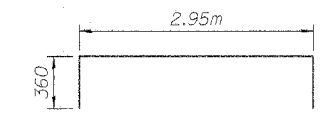
**SECTION THRU HEADWALL**  
(Upstream End Only)



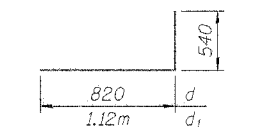
**SECTION THRU BARREL**



**BAR a1**

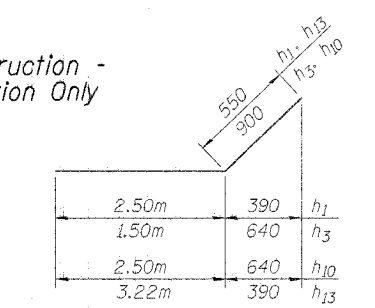


**BAR a3**

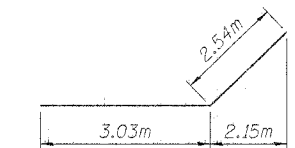


**BARS d & d1\***

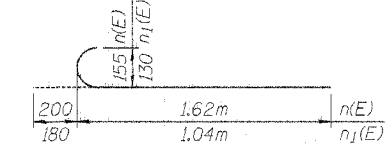
\*WB Reconstruction -  
For Information Only



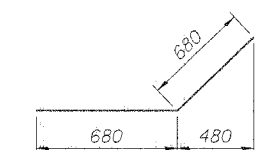
**BARS h1\*, h3, h10 & h13\***



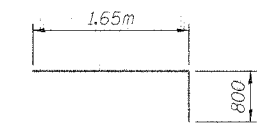
**BAR h18\***



**BARS n(E)\* & n1(E)\***



**BAR w1\***



**BAR z\***

**BILL OF MATERIAL  
FOR EB RECONSTRUCTION**

Bar	No.	Size	Length (m)	Shape
a1	274	#25	3.51	U
a2	105	#13	2.95	—
a3	310	#22	3.67	—
d	11	#13	1.36	—
h3	22	#19	2.40	—
h4	2	#19	2.99	—
h7	50	#22	9.95	—
h9	120	#16	9.80	—
h10	18	#19	3.40	—
h15	125	#19	9.85	—
v	428	#13	2.22	—
v1	8	#13	2.74	—
Item	Unit	Quantity		
Reinforcement Bars	Kg	14,930		
Furnishing Metal Pile Shells 305mm	m	663		
Driving and Filling Shells	m	663		
Test Pile Metal Shells	Each	1		
Concrete Box Culverts	m <sup>3</sup>	139.4		

STATION 18+934  
BUILT 200- BY  
STATE OF ILLINOIS  
F.A.I. RT. 94  
LOADING MS18 & ALT.  
STR. NO. 016-C012

**NAME PLATE**

DESIGNED	PMM
CHECKED	LAS
DRAWN	SAW
CHECKED	LAS

ILLINOIS DEPARTMENT OF TRANSPORTATION  
FAI ROUTE 80 (INTERSTATE 80/94)  
INTERSTATE 294 TO US ROUTE 41  
**CULVERT SECTIONS & DETAILS**  
F.A.I. 94 BOX CULVERT  
SECTION (0203.1 & 0312-708W) R-3  
COOK COUNTY  
STA. 18+934.000  
STRUCTURE NO. 016-C012  
DATE JULY 18, 2005  
SCALE  
**BRANCO & ZROKA**  
ENGINEERING, P.C.