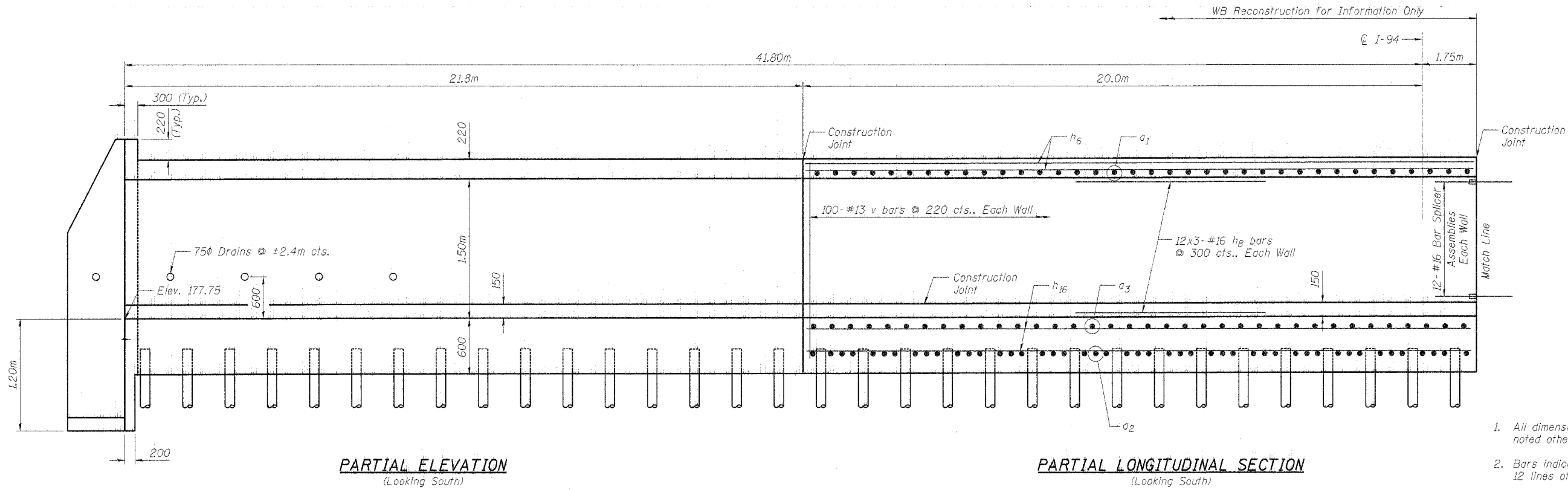


STATE OF ILLINOIS
DEPARTMENT OF TRANSPORTATION

ROUTE NO.	SECTION	COUNTY	TOTAL SHEETS	SHEET NO.
F.A.I. 80/94	*	COOK	870	684
FED. ROAD DIST. NO. 1	ILLINOIS	FED. AID PROJECT		

SHEET NO. 5
13 SHEETS

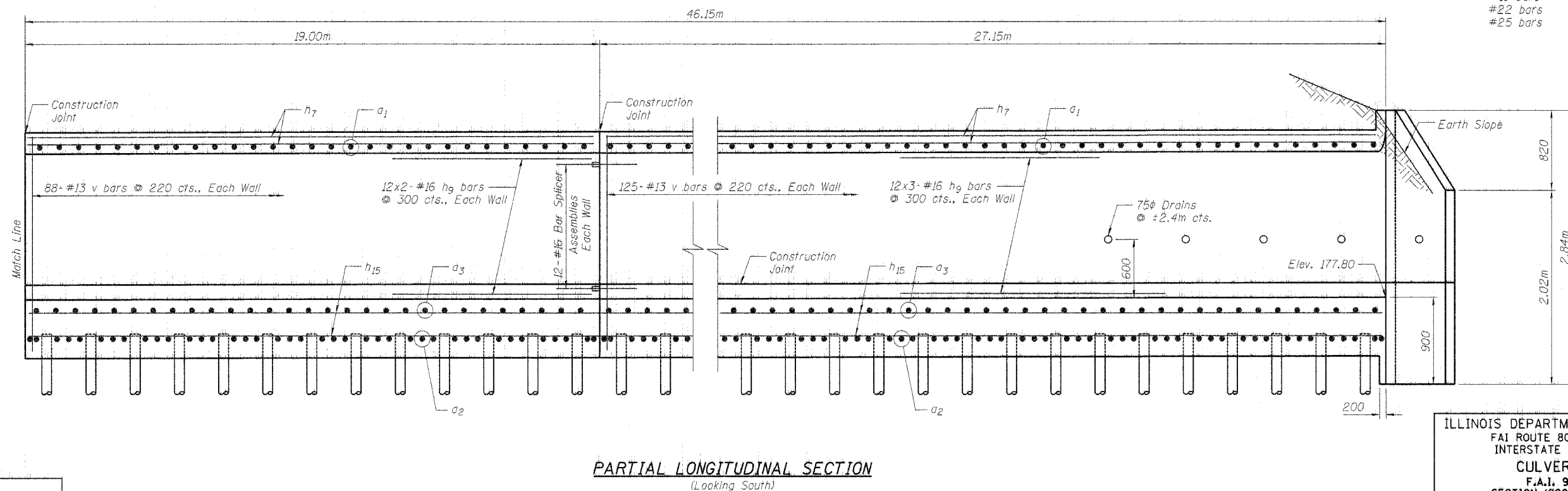
*(0203.1 & 0312-708W) R-3 CONTRACT #62108



NOTES

- All dimensions are in millimeters (mm) unless noted otherwise.
- Bars indicated thus: 12x2-#16, etc. indicates 12 lines of bars with 2 lengths per line.
- Reinforcement bars designated (E) shall be epoxy coated.
- Minimum Bar Laps (unless noted otherwise):

	Barrels	Wingwalls
#13 bars	440	550
#16 bars	550	680
#19 bars	670	830
#22 bars	910	1130
#25 bars	1190	1490



DESIGNED	PMM
CHECKED	LAS
DRAWN	SAW
CHECKED	LAS

ILLINOIS DEPARTMENT OF TRANSPORTATION
FAI ROUTE 80 (INTERSTATE 80/94)
INTERSTATE 294 TO US ROUTE 41
CULVERT ELEVATION
F.A.I. 94 BOX CULVERT
SECTION (0203.1 & 0312-708W) R-3
COOK COUNTY
STA. 18+934.000
STRUCTURE NO. 016-C012
DATE JULY 18, 2005
SCALE