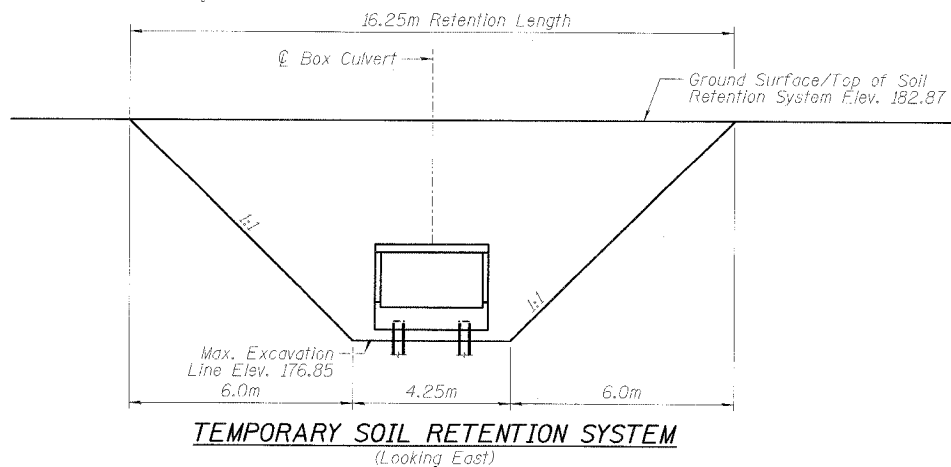
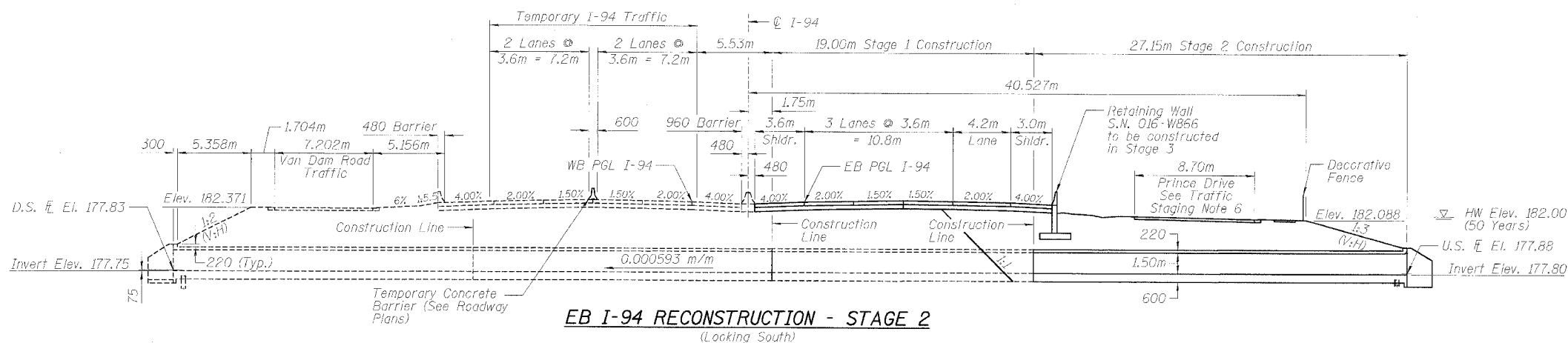
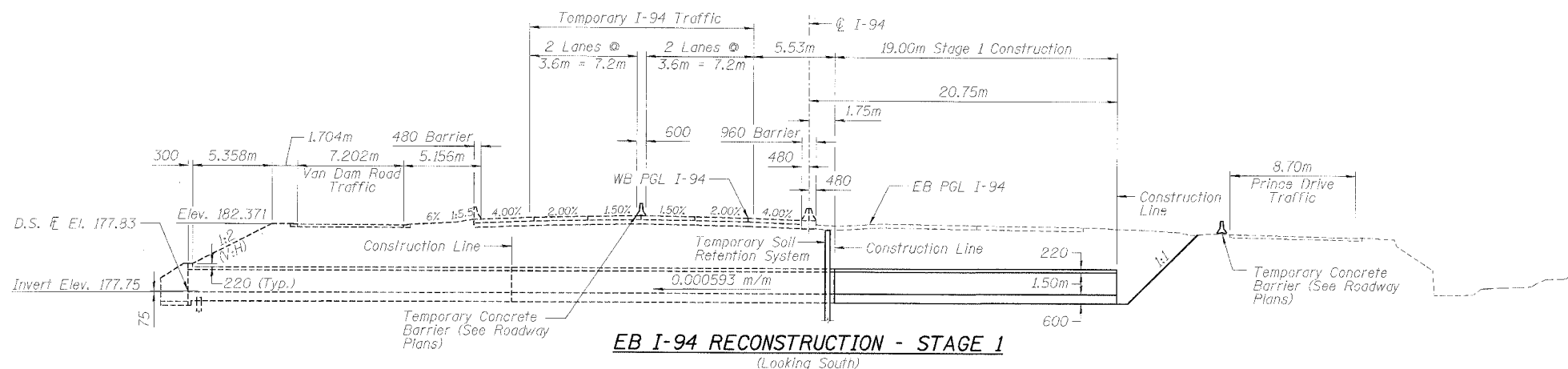
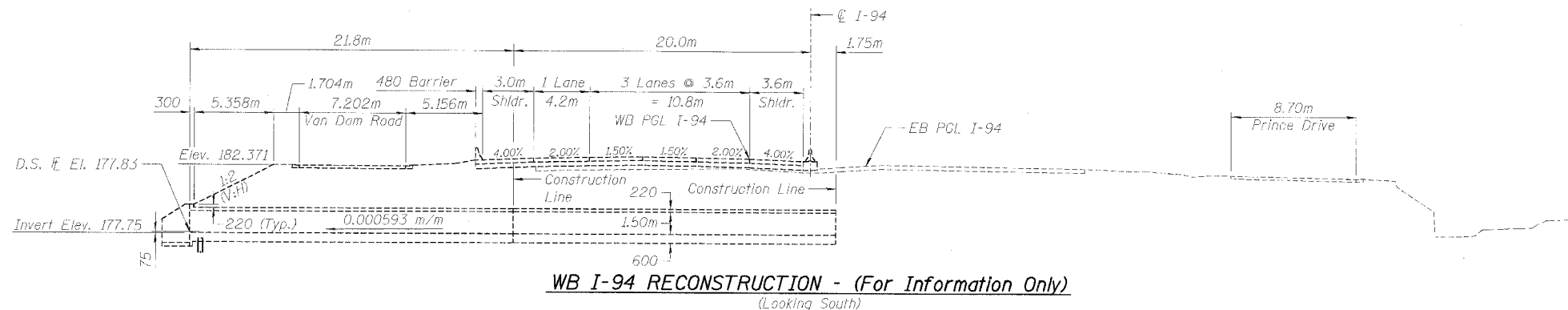


STATE OF ILLINOIS  
DEPARTMENT OF TRANSPORTATION

ROUTE NO.	SECTION	COUNTY	TOTAL SHEETS	SHEET NO.
F.A.I. 80/94	*	COOK	870	681
FED. ROAD DIST. NO. 1		ILLINOIS	FED. AID PROJECT	
(0203.1 & 0312-708W) R-3		CONTRACT #62108		

SHEET NO. 2  
13 SHEETS



**BILL OF MATERIAL FOR EB RECONSTRUCTION**

ITEM	UNIT	QUANTITY
Porous Granular Embankment	m <sup>3</sup>	42.2
Removal and Disposal of Unsuitable Material	m <sup>3</sup>	1,037.2
Porous Granular Embankment (Special)	m <sup>3</sup>	138.5
Temporary Soil Retention System	m <sup>2</sup>	61.5

**NOTES**

- All dimensions are in millimeters (mm) unless noted otherwise.
- A cantilevered sheet piling design does not appear feasible and additional members or other retention systems may be necessary. The Contractor shall submit a temporary soil retention system design including plan details and calculations for review and acceptance by the Engineer.
- For details of the Temporary Bulkhead in place to seal the space between the Existing Elliptical RCP and the new culvert between WB and EB Reconstruction contracts, see Drainage Plans.
- The Contractor is responsible for the retention of the soil above, below, and around the existing drainage pipes, to be included with Temporary Soil Retention System.
- The Contractor is responsible for maintaining existing drainage flow. For additional information, see notes on Drawing DU-1.
- Prince Drive shall be closed to traffic at the box culvert for no longer than 60 calendar days. Prince Drive shall be opened to traffic once work is complete. The Contractor shall provide two weeks advanced warning prior to closure of Prince Drive.
- Limits of Removal and Disposal of Unsuitable Material shall be from existing grades to the bottom of the bottom slab of the box culvert. Its horizontal limit shall be 600mm behind the culvert walls and the wingwalls. Limits shall also include the volume of undercut below the box culvert.

DESIGNED	PMM
CHECKED	LAS
DRAWN	SAW
CHECKED	LAS

ILLINOIS DEPARTMENT OF TRANSPORTATION  
FAI ROUTE 80 (INTERSTATE 80/94)  
INTERSTATE 294 TO US ROUTE 41  
STAGE CONSTRUCTION  
F.A.I. 94 BOX CULVERT  
SECTION (0203.1 & 0312-708W) R-3  
COOK COUNTY  
STA. 18+934.000  
STRUCTURE NO. 016-C012  
DATE JULY 18, 2005  
SCALE

**BRANCO & ZROKA**  
ENGINEERS - P.C.