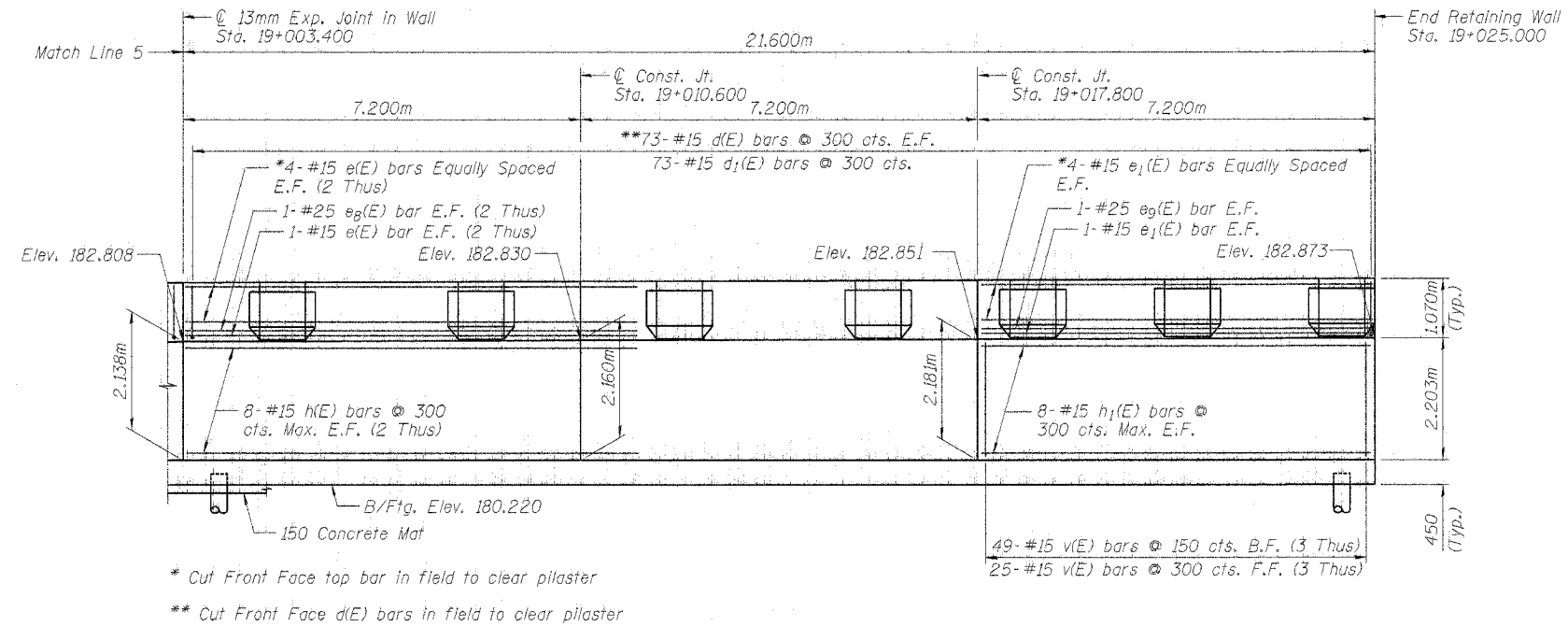


STATE OF ILLINOIS  
DEPARTMENT OF TRANSPORTATION

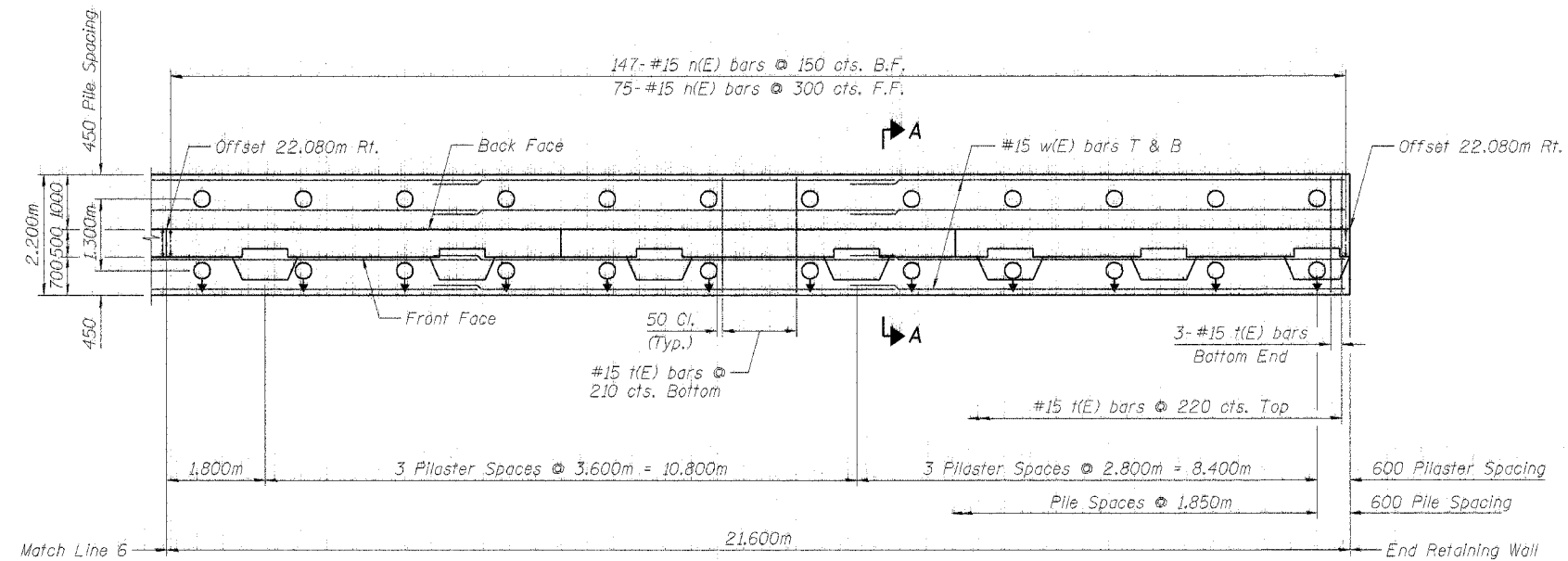
ROUTE NO. F.A.I. 80/94	SECTION *	COUNTY COOK	TOTAL SHEETS 870	SHEET NO. 673
FED. ROAD DIST. NO. 1		ILLINOIS FED. AID PROJECT		

\*0203.1 & 0312-708W) R-3 CONTRACT #62108

SHEET NO. 6  
12 SHEETS



ELEVATION



PLAN

NOTES

- For Pilaster Details and Pilaster Reinforcement, see Sheet No. 8.
- For Bill of Material and Bar Details, see Sheet No. 7.
- For Cross Section A-A, see Sheet No. 7.
- For Rustication, Construction Joint and Expansion Joint Details, see Sheet No. 2.
- All dimensions are in millimeters (mm) except as noted.

LEGEND

- B.F. = Back Face
- F.F. = Front Face
- E.F. = Each Face
- T & B = Top & Bottom
- Pile Battered 1:6
- Vertical Pile

BAR LAPS

- #15 Bar = 640 (in wall and parapet)
- #25 Bar = 1,320m
- #15 Bar = 890 (in footing)

DESIGNED	LAS
CHECKED	DAZ
DRAWN	SAW
CHECKED	LAS

ILLINOIS DEPARTMENT OF TRANSPORTATION  
FAI ROUTE 80 (INTERSTATE 80/94)  
INTERSTATE 294 TO US ROUTE 41  
PLAN & ELEVATION 4  
IL 394 (F.A.I. 94) RETAINING WALL  
SECTION (0203.1 & 0312-708W) R-3  
COOK COUNTY  
STA. 18+876.000 STRUCTURE NO. 016-W866  
DATE JULY 18, 2005  
SCALE

**BRANCO & ZROKA**  
ENGINEERING, P.C.