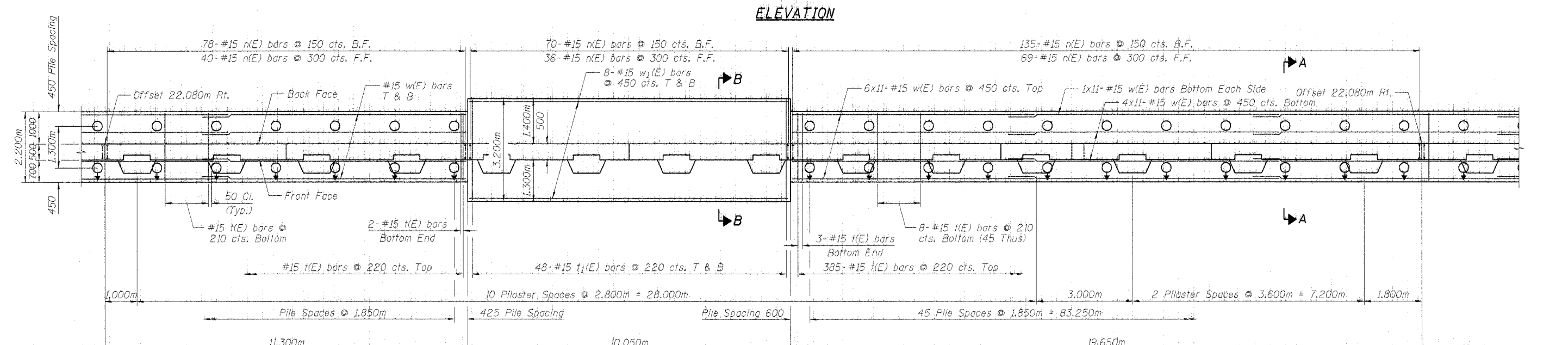
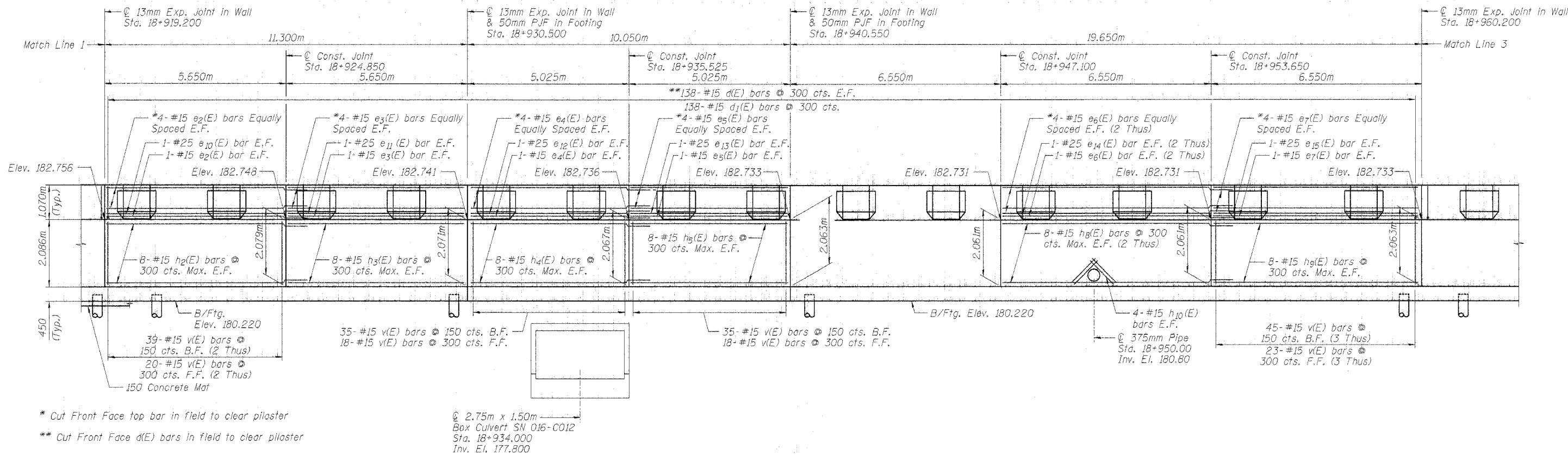


STATE OF ILLINOIS
DEPARTMENT OF TRANSPORTATION

ROUTE NO.	SECTION	COUNTY	TOTAL SHEETS	SHEET NO.
F.A.I. 80/94	*	COOK	870	671
FED. ROAD DIST. NO. 1	ILLINOIS	FED. AID PROJECT		

SHEET NO. 4
12 SHEETS

*0203.1 & 0312-708W R-3 CONTRACT #62108



NOTES

1. For Pilaster Details and Pilaster Reinforcement, see Sheet No. 8.
2. For Bill of Material and Bar Details, see Sheet No. 7.
3. For Cross Section A-A and Cross Section B-B, see Sheet No. 7.
4. Bars indicated thus: 4x11-#15 etc. indicates 4 lines of bars with 11 lengths per line.
5. For Rustication, Construction Joint and Expansion Joint Details, see Sheet No. 2.
6. All dimensions are in millimeters (mm) except as noted.
7. For Detail of Pipe Drain Sleeve Thru Wall, see Sheet No. 7.

LEGEND

- B.F. = Back Face
- F.F. = Front Face
- E.F. = Each Face
- T & B = Top & Bottom
- Pile Battered 1:6
- Vertical Pile

BAR LAPS

- #15 Bar = 640 (in wall and parapet)
- #25 Bar = 1320m
- #15 Bar = 890 (in footing)

DESIGNED	LAS
CHECKED	DAZ
DRAWN	SAW
CHECKED	LAS

ILLINOIS DEPARTMENT OF TRANSPORTATION
FAI ROUTE 80 (INTERSTATE 80/94)
INTERSTATE 294 TO US ROUTE 41
PLAN & ELEVATION 2
IL 394 (F.A.I. 94) RETAINING WALL
SECTION (0203.1 & 0312-708W) R-3
COOK COUNTY
STA. 18+876.000 STRUCTURE NO. 016-W866
DATE JULY 18, 2005
SCALE
BRANCO & ZROKA
ENGINEERING, P.C.