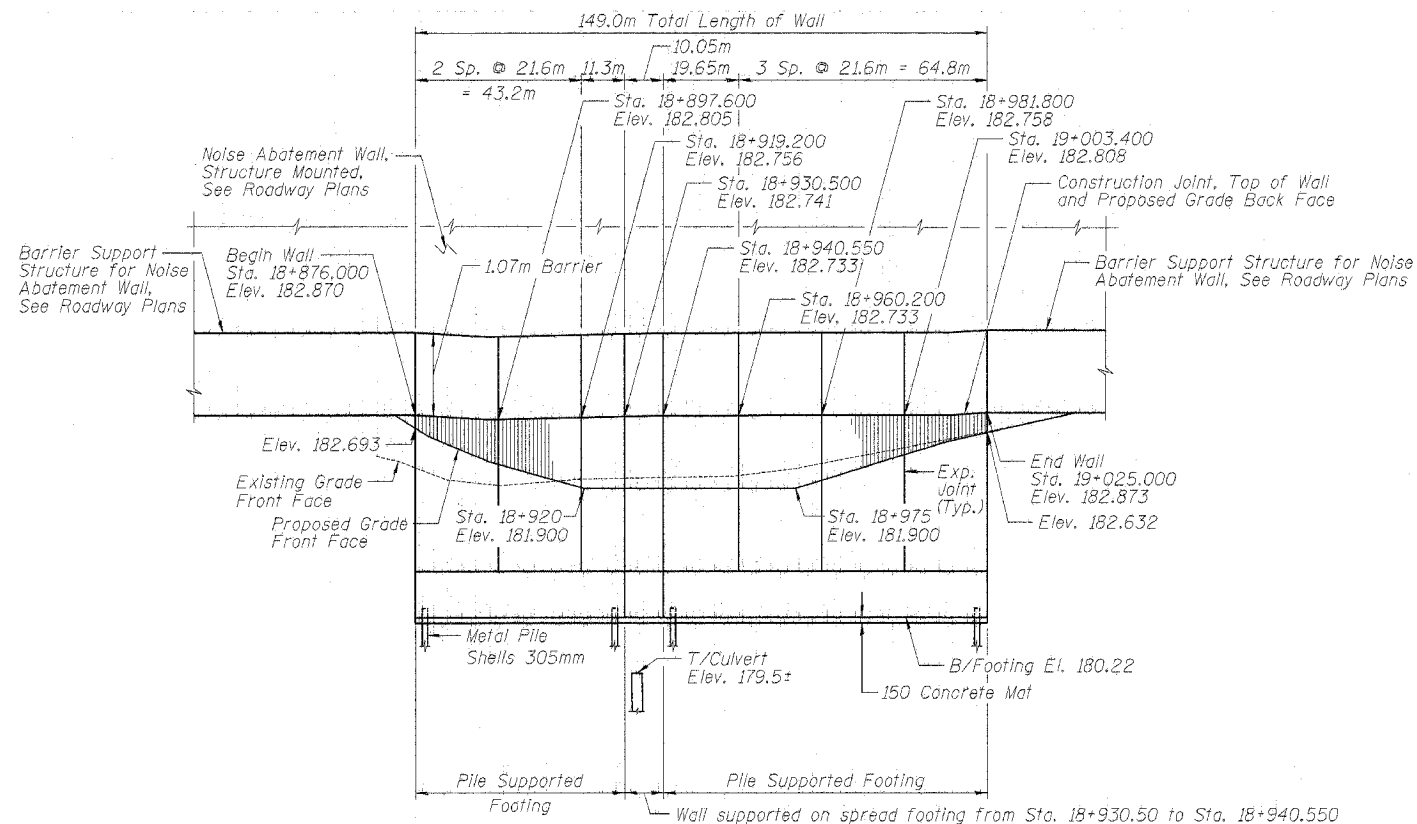


T.B.M. 311: Set cut box on southeast corner of foundation of overhead sign truss; I-94 Eastbound; Approximate Sta. 19+015 (Approximate Mile Marker 73.40); Elev. 183.386

Existing Structure: None

(0203.1 & 0312-708W) R-3 CONTRACT #62108



ELEVATION

GENERAL NOTES

- All dimensions are in millimeters (mm) except as noted.
- Reinforcement bars shall conform to the requirements of AASHTO M 31M or M 322M Grade 400.
- The Contractor shall drive two 305mm Metal Shell Pile test piles in a permanent location as directed by the Engineer before ordering the remainder of piles.
- Concrete Mat shall be placed after Metal Shell Piles are driven and shall be paid for as Concrete Structures.
- All construction joints shall be bonded.
- Offsets are from the ϕ FAI 94 and are to the Back Face of the retaining wall.
- The back face of the retaining wall shall be waterproofed according to Article 503.18 of the Standard Specifications.

BILL OF MATERIAL

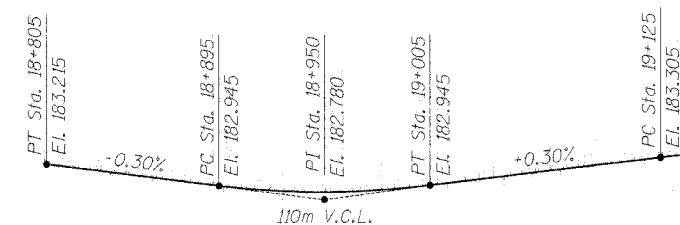
ITEM	UNIT	QUANTITY
Structure Excavation	m ³	1,073
Concrete Structures	m ³	432.6
Reinforcement Bars, Epoxy Coated	kg	30,300
Protective Coat	m ²	209
Rustication Finish	m ²	150
Furnishing Metal Pile Shells 305mm	m	1,725
Driving and Filling Shells	m	1,725
Test Pile Metal Shells	Each	2
Noise Abatement Wall Anchor Rod Assembly	Each	46

PILE DATA

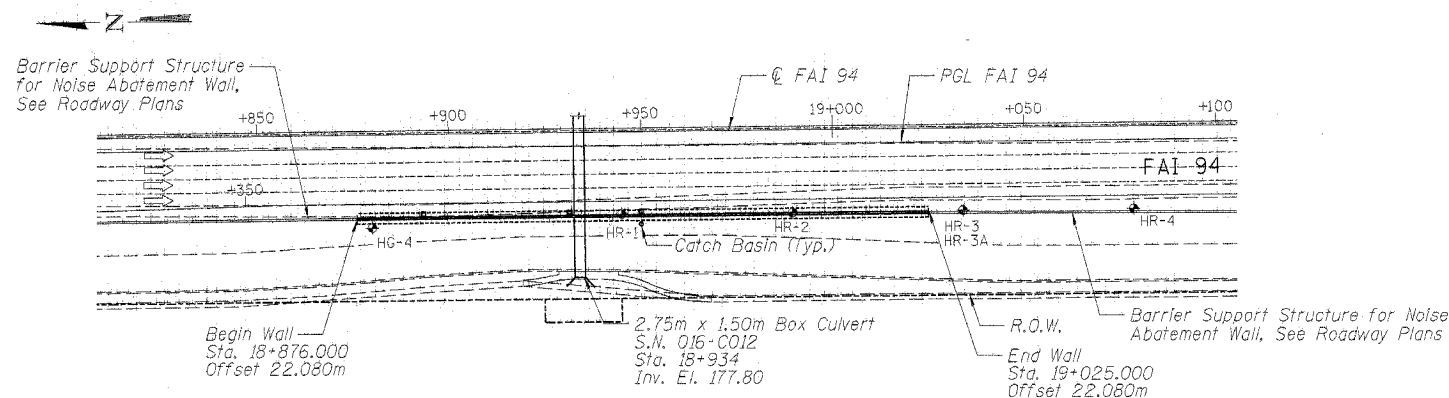
Type: Metal Pile Shells, 305mm
Capacity: 270 kN
Est. Length: 11.5 m
No. Req'd.: 150 plus 2 Test Piles

INDEX OF SHEETS

Title	Sheet
General Plan & Elevation	1
Details & Sections	2
Plan & Elevation 1 to 4	3-6
Reinforcement Details	7
Plaster Details	8
Concrete Piles	9
Soil Boring Logs 1 to 3	10-12



PROPOSED PROFILE GRADE LINE I-94
(At Inside Edge of Pavement)



PLAN

DESIGN SPECIFICATIONS

2002 AASHTO
1989 AASHTO Guide Specifications for Structural Design of Sound Barriers and 1992 Interim

DESIGN STRESSES

FIELD UNITS
 $f_c = 24$ MPa
 $f_y = 400$ MPa (Reinforcement)

LOADING

Wind Load = 1.7 kPa

LEGEND

⊕ Soil Boring

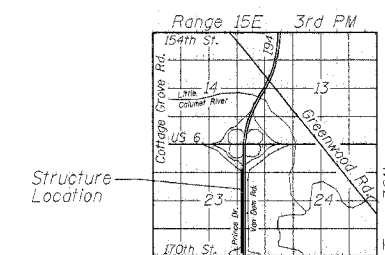
DESIGNED	LAS
CHECKED	DAZ
DRAWN	SAW
CHECKED	LAS



Signature: *Deborah A. Zroka* Date: July 8, 2005
Expires: 11-30-06

APPROVED
FOR STRUCTURAL ADEQUACY ONLY

Signature: *Ralph E. Anderson* (TSD)
ENGINEER OF BRIDGES AND STRUCTURES



LOCATION SKETCH

ILLINOIS DEPARTMENT OF TRANSPORTATION
FAI ROUTE 80 (INTERSTATE 80/94)
INTERSTATE 294 TO US ROUTE 41
GENERAL PLAN & ELEVATION
IL 394 (FAI 94) RETAINING WALL
SECTION (0203.1 & 0312-708W) R-3
COOK COUNTY
STA. 18+876.000 STRUCTURE NO. 016-W866

DATE JULY 18, 2005
SCALE

