

STATE OF ILLINOIS
DEPARTMENT OF TRANSPORTATION

ROUTE NO.	SECTION	COUNTY	TOTAL SHEETS	SHEET NO.
F. A. I. 80/94	*	COOK	870	655
FED. ROAD DIST. NO. 1 ILLINOIS FED. AID PROJECT-				
0203.1 & 0312-708WR-3			CONTRACT NO. 62108	

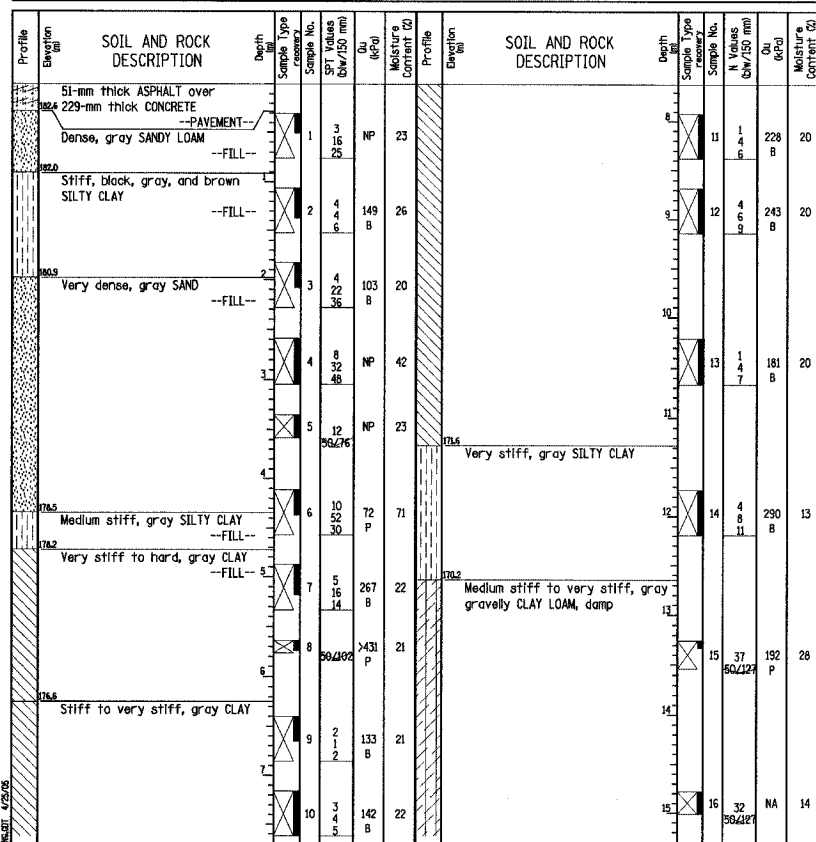
SHEET NO. 45
56 SHEETS

BORING LOG B-1 Page 1 of 2

Wang Engineering, Inc.
wawang3@wawang.com
1145 Main Street
Lombard, IL 60148
Telephone: 630 953-9928
Fax: 630 953-9938

Client: HNTB
Project: EB I-94 Bridge over Thorn Creek
Location: Cook County, IL

Datum: NGVD
Elevation: 182.88 m
North: 545985.56 m
East: 362587.87 m
Station: 20+471.979
Offset: L819 RT



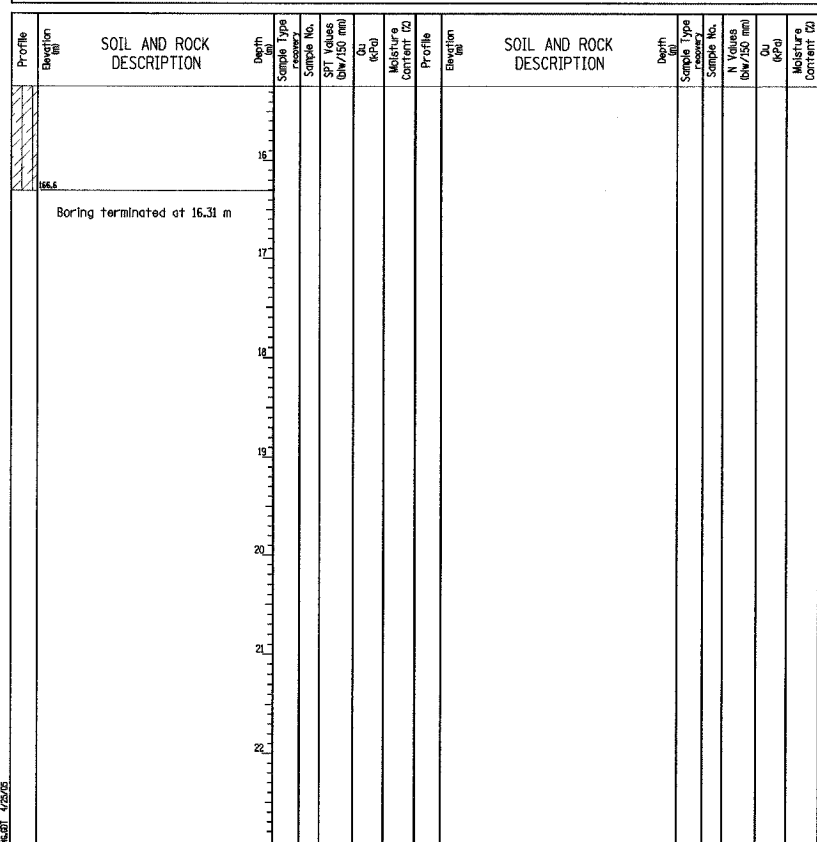
GENERAL NOTES		WATER LEVEL DATA	
Begin Drilling	01-19-2005	Complete Drilling	01-20-2005
Drilling Contractor	Patrick Drilling	Drill Rig	CME 75
Driller	J&L Logger Y. Shiu	Checked by	N. Davis
Drilling Method	3.25-inch HSA; Backfilled upon completion		
While Drilling	☐	DRY	
At Completion of Drilling	☑	DRY	
Time After Drilling	NA		
Depth to Water	☑ NA		

BORING LOG B-1 Page 2 of 2

Wang Engineering, Inc.
wawang3@wawang.com
1145 Main Street
Lombard, IL 60148
Telephone: 630 953-9928
Fax: 630 953-9938

Client: HNTB
Project: EB I-94 Bridge over Thorn Creek
Location: Cook County, IL

Datum: NGVD
Elevation: 182.88 m
North: 545985.56 m
East: 362587.87 m
Station: 20+471.979
Offset: L819 RT



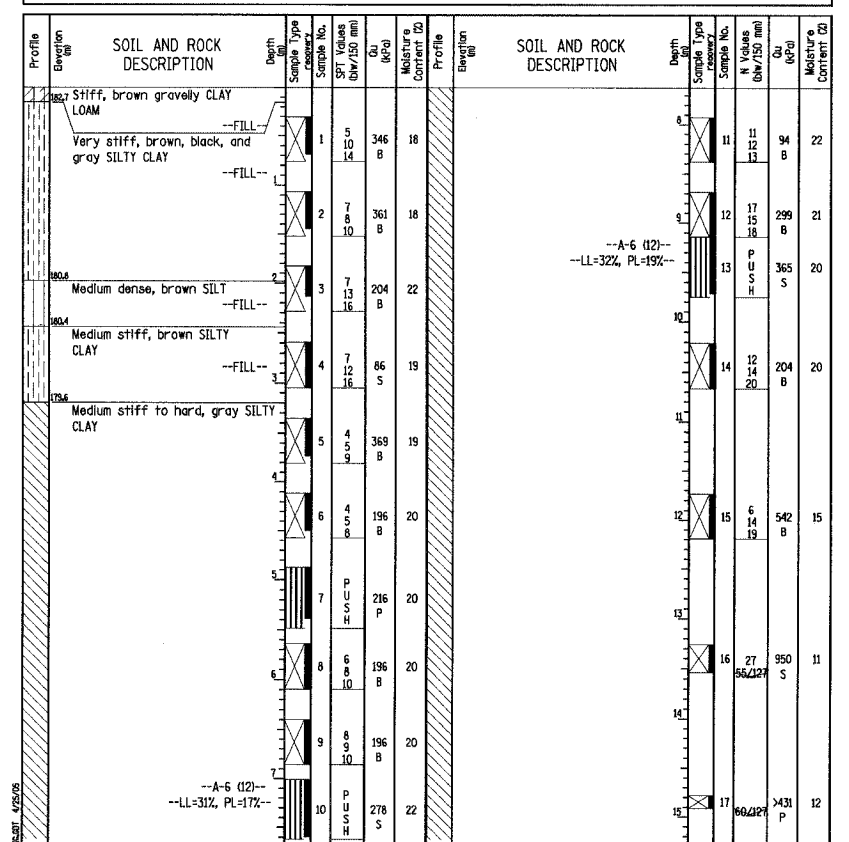
GENERAL NOTES		WATER LEVEL DATA	
Begin Drilling	01-19-2005	Complete Drilling	01-20-2005
Drilling Contractor	Patrick Drilling	Drill Rig	CME 75
Driller	J&L Logger Y. Shiu	Checked by	N. Davis
Drilling Method	3.25-inch HSA; Backfilled upon completion		
While Drilling	☐	DRY	
At Completion of Drilling	☑	DRY	
Time After Drilling	NA		
Depth to Water	☑ NA		

BORING LOG B-2 Page 1 of 2

Wang Engineering, Inc.
wawang3@wawang.com
1145 Main Street
Lombard, IL 60148
Telephone: 630 953-9928
Fax: 630 953-9938

Client: HNTB
Project: EB I-94 Bridge over Thorn Creek
Location: Cook County, IL

Datum: NGVD
Elevation: 182.83 m
North: 545983.61 m
East: 362527.05 m
Station: 20+506.695
Offset: 23.047 LT



GENERAL NOTES		WATER LEVEL DATA	
Begin Drilling	01-05-2005	Complete Drilling	01-05-2004
Drilling Contractor	DLZ	Drill Rig	D-120 TMR
Driller	J&R Logger Y. Shiu	Checked by	N. Davis
Drilling Method	3.25-inch HSA; Backfilled upon completion		
While Drilling	☐	DRY	
At Completion of Drilling	☑	DRY	
Time After Drilling	NA		
Depth to Water	☑ NA		

DESIGNED	---
CHECKED	---
DRAWN	LK
CHECKED	JJK

JB:beuchamp
EA:34562\CAADD\bl\SM_2807\cds\CTR-19_2807\lpt\90014s_2807.dgn
05-JUL-2005 14:20

ILLINOIS DEPARTMENT OF TRANSPORTATION
I-94 EAST BOUND / IL 394 SOUTH BOUND

BORING LOGS B-1 & B-2
EB I-94 OVER THORN CREEK
F.A.I. 94 SECTION (0203.1 & 0312-708W) R-3
COOK COUNTY
STA. 20+509.000 STRUCTURE NO. 016-2807
DATE JUL 18, 2005
SCALE ---

HNTB