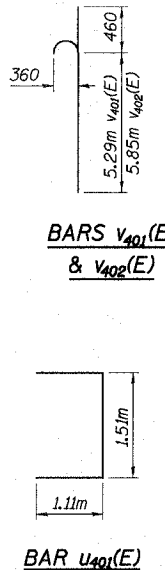
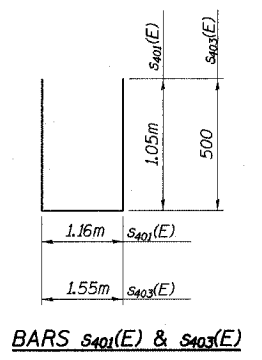
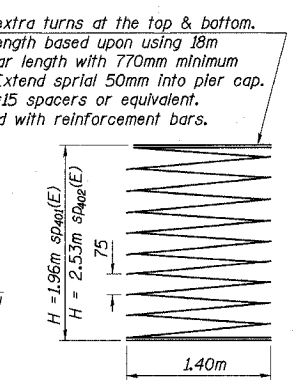
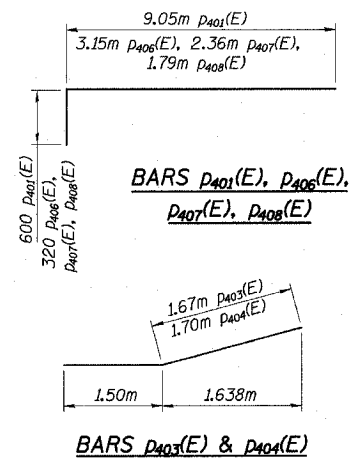
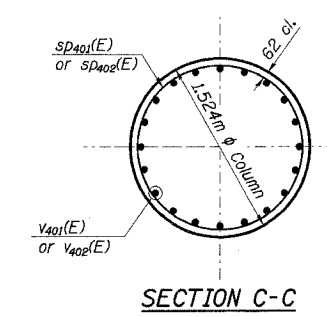
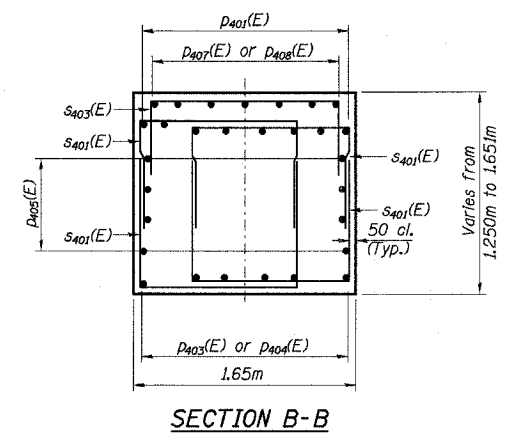
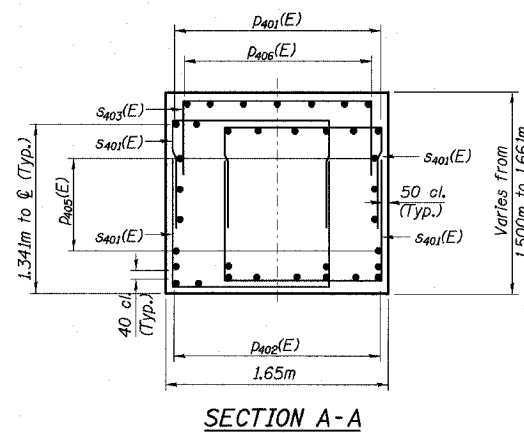
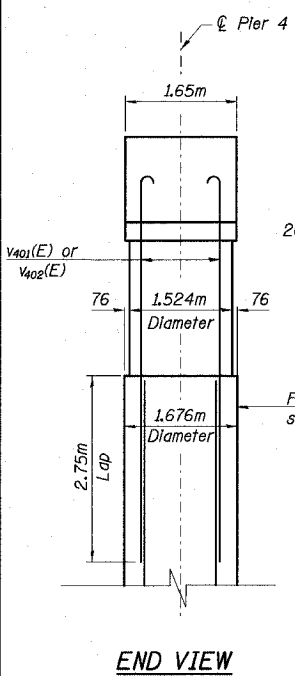
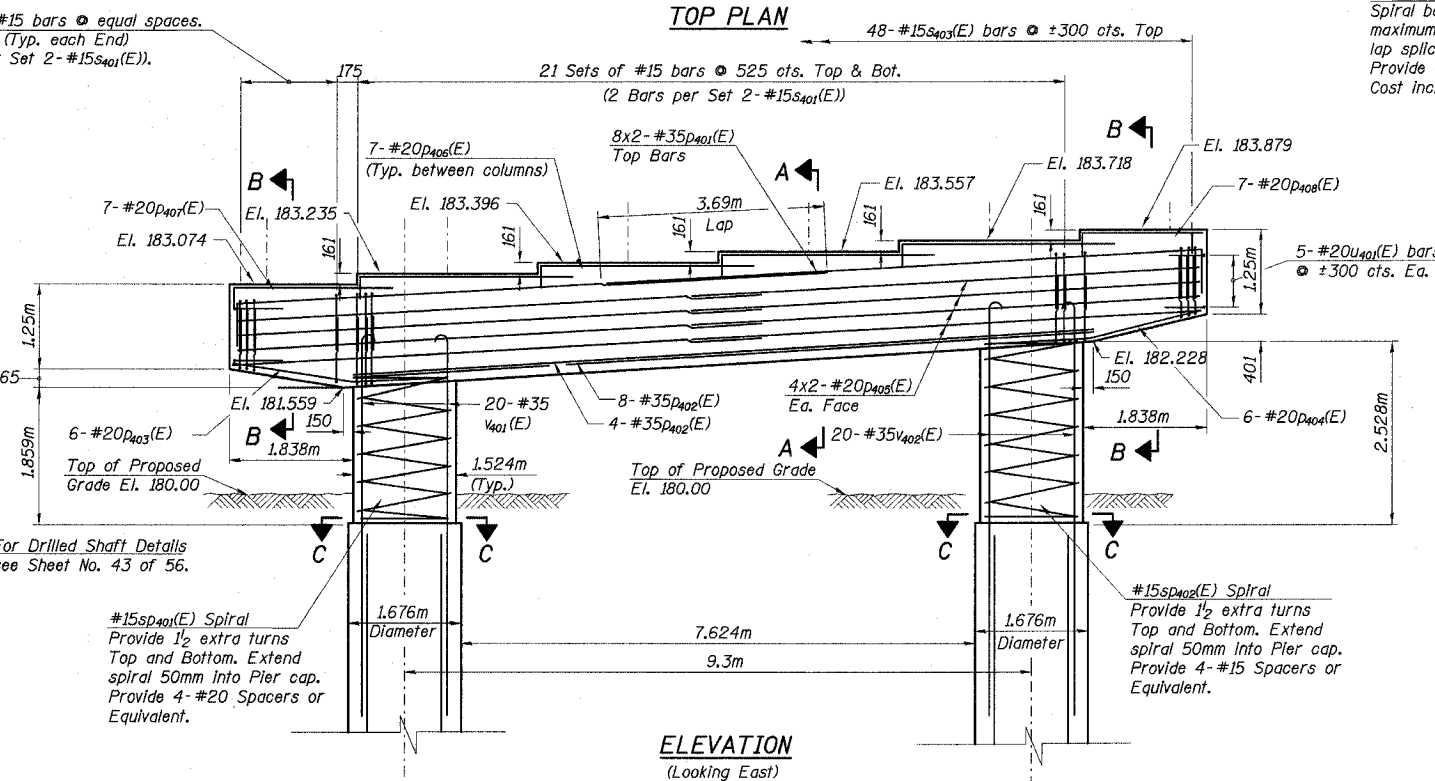
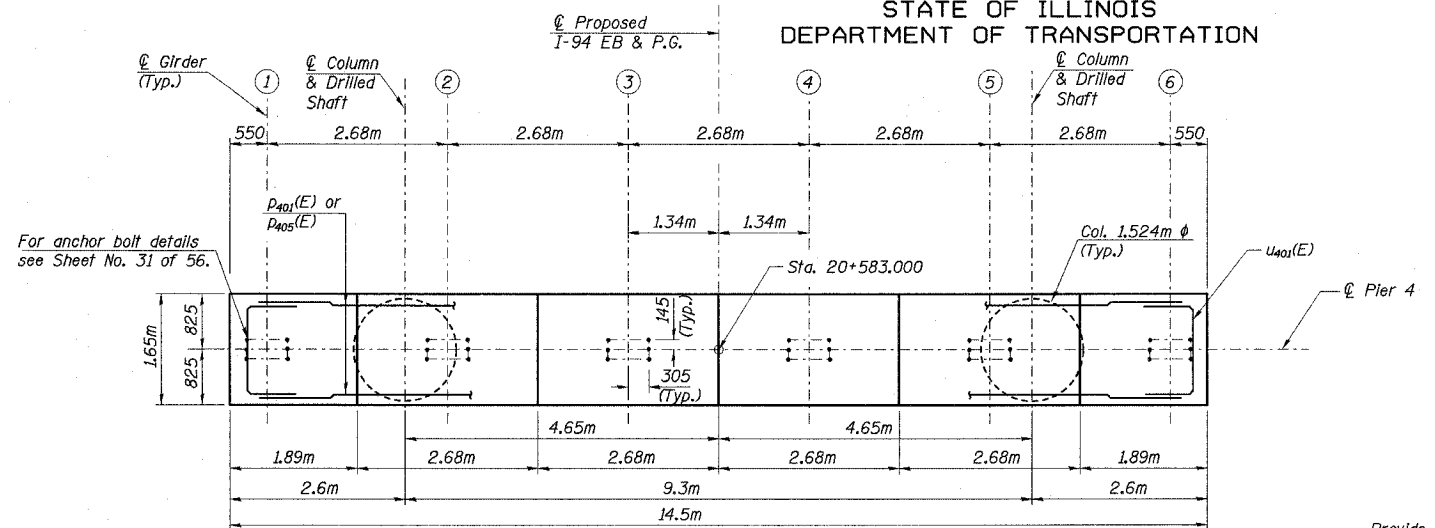


STATE OF ILLINOIS
DEPARTMENT OF TRANSPORTATION

ROUTE NO.	SECTION	COUNTY	TOTAL SHEETS	SHEET NO.	SHEET NO. 41
F. A. I. 80/94	*	COOK	870	651	56 SHEETS
FED. ROAD DIST. NO. 1 ILLINOIS FED. AID PROJECT-			CONTRACT NO. 62108		
0203.1 & 0312-708WR-3					



BILL OF MATERIAL

Bar	No.	Size	Length	Shape
P401(E)	16	#35	9.65	□
P402(E)	12	#35	11.02	□
P403(E)	6	#20	3.17	□
P404(E)	6	#20	3.20	□
P405(E)	16	#20	7.76	□
P406(E)	28	#20	3.47	□
P407(E)	7	#20	2.68	□
P408(E)	7	#20	2.11	□
S401(E)	116	#15	3.26	□
S403(E)	48	#15	2.55	□
V401(E)	20	#35	5.75	□
V402(E)	20	#35	6.31	□
SP401(E)	1	#15	1.96	□
SP402(E)	1	#15	2.53	□
U401(E)	10	#20	3.73	□
Reinforcement Bars, Epoxy Coated			kg	6180
Concrete Structures			m ³	45.9

Provide 1/2 extra turns at the top & bottom. Spiral bar length based upon using 18m maximum bar length with 770mm minimum lap splice. Extend spiral 50mm into pier cap. Provide 4-#15 spacers or equivalent. Cost included with reinforcement bars.

Reinforcement Bars designated (E) shall be epoxy coated. **Length is height of spiral.

NOTES

- Space reinforcement in cap to miss anchor bolts.
- Pour steps monolithically with the cap.
- All dimensions are in millimeters, except as noted.
- Bars indicated thus 9 x 2 - #35 etc. indicates 9 line of bars with 2 lengths per line.
- For drilled shaft details and reinforcement, see Sheet No. 43 of 56.

MIN. BAR LAPS

- #35 Top bars = 3.69m
- #35 Others = 2.64m
- #20 Top bars = 1.11m
- #20 Others = 790
- #15 Others = 640
- #15 Spiral = 770

ILLINOIS DEPARTMENT OF TRANSPORTATION
I-94 EAST BOUND / IL 394 SOUTH BOUND
PIER 4
EB I-94 OVER THORN CREEK
F.A.I. 94 SECTION (0203.1 & 0312-708W) R-3
COOK COUNTY
STA. 20+509.000 STRUCTURE NO. 016-2807
DATE JUL 18, 2005
SCALE ---
HNTB

L:\kates\34562\CADD\BNSN_2807\cadd\CTR_19_2807\p190244a_2807.dgn
 18-AUG-2005 13:31

DESIGNED	TFS
CHECKED	HDA
DRAWN	ALR
CHECKED	OD