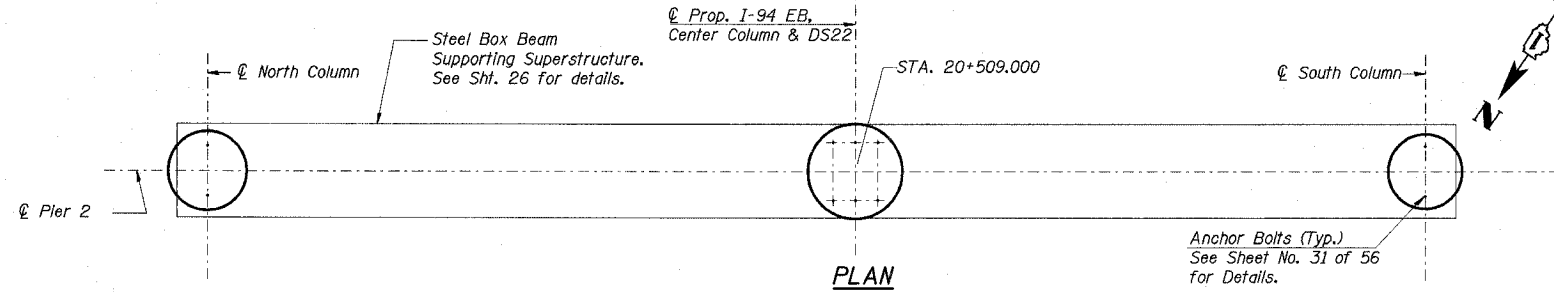


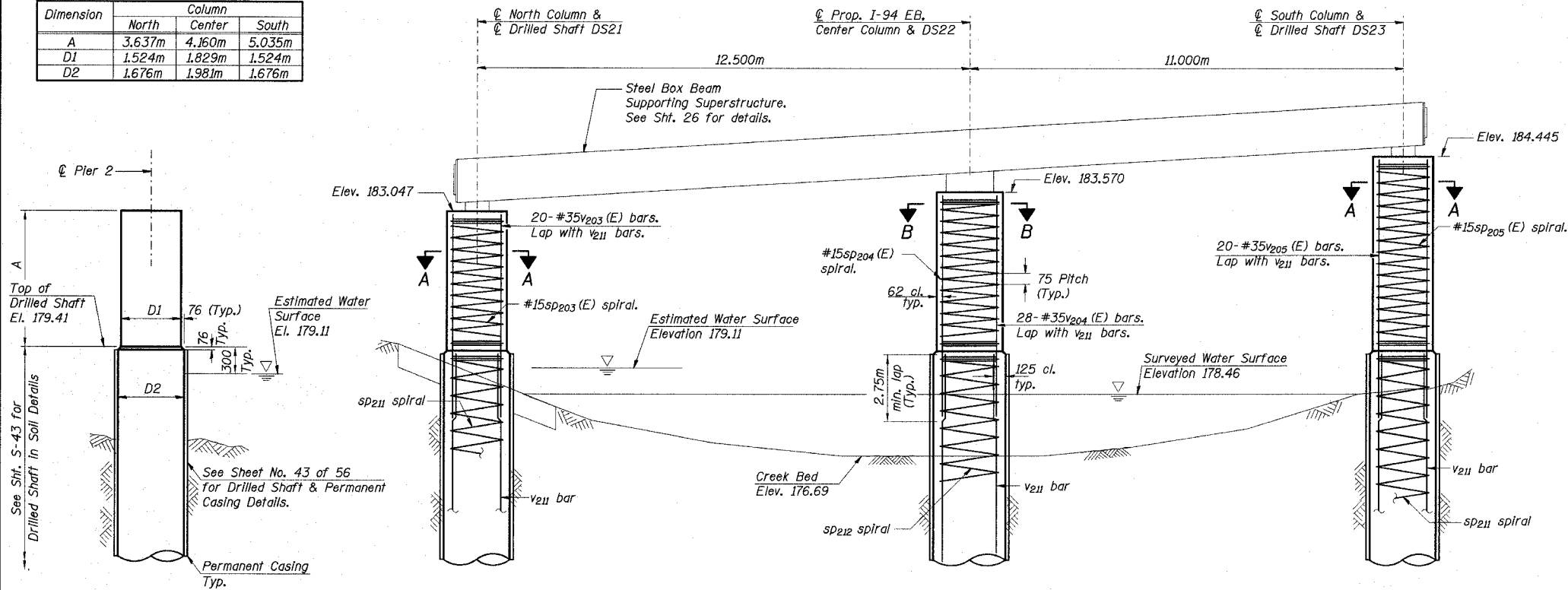
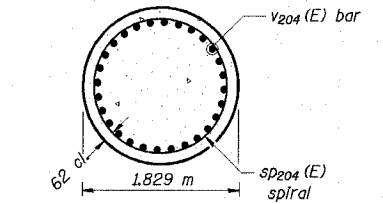
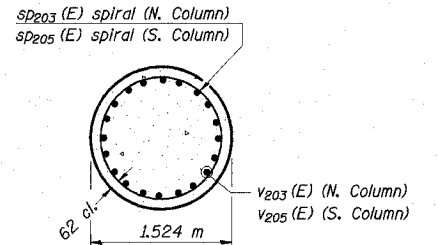
STATE OF ILLINOIS
DEPARTMENT OF TRANSPORTATION

ROUTE NO.	SECTION	COUNTY	TOTAL SHEETS	SHEET NO.	SHEET NO. 39
F. A. I. 80/94		COOK	870	649	56 SHEETS
FED. ROAD DIST. NO. 1	ILLINOIS FED. AID PROJECT-				
0203.1 & 0312-708WR-3	CONTRACT NO. 62108				



DIMENSION TABLE

Dimension	Column		
	North	Center	South
A	3.637m	4.160m	5.035m
D1	1.524m	1.829m	1.524m
D2	1.676m	1.981m	1.676m



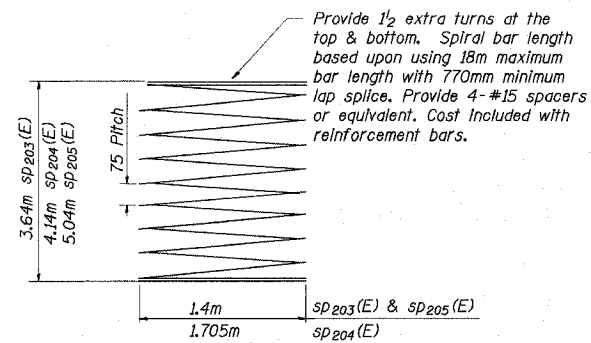
BILL OF MATERIAL

Bar	No.	Size	Length	Shape
** SP203 (E)	1	#15	3.64	MM
** SP204 (E)	1	#15	4.14	MM
** SP205 (E)	1	#15	5.04	MM
V203 (E)	20	#35	6.39	---
V204 (E)	28	#35	6.89	---
V205 (E)	20	#35	7.79	---
Concrete Structures		m ³	29.8	
Reinforcement Bars, Epoxy Coated		kg	5130	

Reinforcement Bars designated (E) shall be epoxy coated.

**Length is height of spiral.

All dimensions are in millimeters (mm) except as noted.



* If the prevailing water surface elevation during construction is consistently different than estimated on the plans, the contractor may propose an adjustment to the top of the drilled shaft elevation as part of their installation procedure. The top of all drilled shafts within a substructure unit shall be constructed to the same elevation and extend above the prevailing water surface. The quantities and reinforcement detailing are based on the top of shaft and the estimated elevations shown and may change based on the actual elevations encountered at each shaft and the final top of shaft elevation.

DESIGNED	OD
CHECKED	TFS
DRAWN	OD
CHECKED	TFS

L:\state\j\34562\CADD\B\SN_2807\cadd\CTR_19_2807\p19224e_2807.dgn
18-AUG-2005 13:21

ILLINOIS DEPARTMENT OF TRANSPORTATION
I-94 EAST BOUND / IL 394 SOUTH BOUND

PIER 2

EB I-94 OVER THORN CREEK
F.A.I. 94 SECTION (0203.1 & 0312-708W) R-3
COOK COUNTY
STA. 20+509.000 STRUCTURE NO. 016-2807

DATE JUL 18, 2005
SCALE ---

HNTB