

STATE OF ILLINOIS  
DEPARTMENT OF TRANSPORTATION

ROUTE NO.	SECTION	COUNTY	TOTAL SHEETS	SHEET NO.	SHEET NO. 37
F. A. I. 80/94	*	COOK	870	647	56 SHEETS
FED. ROAD DIST. NO. 1		ILLINOIS FEEL AID PROJECT-		CONTRACT NO. 62108	
0203.1 & 0312-708WR-3					

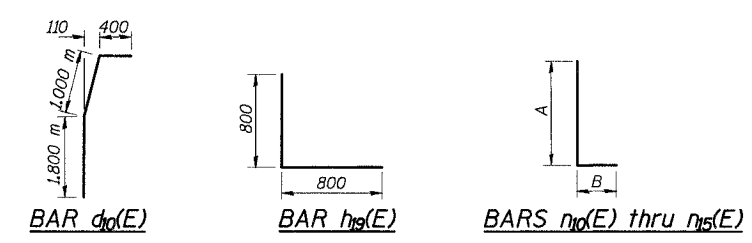
BILL OF MATERIAL

Bar	No.	Size	Length (m)	Shape
d <sub>0</sub> (E)	3	3	3	—
d <sub>1</sub> (E)	3	3	3	—
h <sub>0</sub> (E)	56	56	56	—
h <sub>1</sub> (E)	2	2	2	—
h <sub>2</sub> (E)	4	4	4	—
h <sub>3</sub> (E)	8	8	8	—
h <sub>4</sub> (E)	2	2	2	—
h <sub>5</sub> (E)	8	8	8	—
h <sub>6</sub> (E)	8	8	8	—
h <sub>7</sub> (E)	13	13	13	—
h <sub>8</sub> (E)	46	46	46	—
h <sub>9</sub> (E)	10	10	10	—
h <sub>20</sub> (E)	2	2	2	—
h <sub>10</sub> (E)	34	34	34	—
h <sub>11</sub> (E)	40	40	40	—
h <sub>12</sub> (E)	11	11	11	—
h <sub>13</sub> (E)	12	12	12	—
h <sub>14</sub> (E)	37	37	37	—
h <sub>15</sub> (E)	50	50	50	—
h <sub>16</sub> (E)	10	10	10	—
sp <sub>10</sub>	22	22	22	MMMM
t <sub>10</sub> (E)	73	73	73	—
t <sub>11</sub> (E)	73	73	73	—
t <sub>12</sub> (E)	28	28	28	—
t <sub>13</sub> (E)	28	28	28	—
v <sub>10</sub> (E)	45	45	45	—
v <sub>11</sub> (E)	52	52	52	—
v <sub>12</sub> (E)	50	50	50	—
v <sub>13</sub> (E)	40	40	40	—
v <sub>14</sub> (E)	50	50	50	—
v <sub>15</sub> (E)	50	50	50	—
v <sub>16</sub> (E)	50	50	50	—
v <sub>17</sub> (E)	50	50	50	—
v <sub>18</sub> (E)	37	37	37	—
v <sub>19</sub> (E)	50	50	50	—
v <sub>20</sub> (E)	37	37	37	—
v <sub>21</sub>	528	528	528	—
v <sub>22</sub> (E)	8	8	8	—
w <sub>10</sub> (E)	45	45	45	—
w <sub>11</sub> (E)	45	45	45	—
w <sub>12</sub> (E)	30	30	30	—
w <sub>13</sub> (E)	30	30	30	—
Item	Unit	Quantity		
Structure Excavation	m <sup>3</sup>	346		
Concrete Structures	m <sup>3</sup>	297.6		
Reinforcement Bars, Epoxy Coated	kg	15,830		
Reinforcement Bars	kg	71,050		
Bar Splicers	Each	49		
Porous Granular Embankment (Special)	m <sup>3</sup>	716		
Permanent Casing	m	254.1		
Drilled Shaft in Soil, 1220 mm	m	298.1		

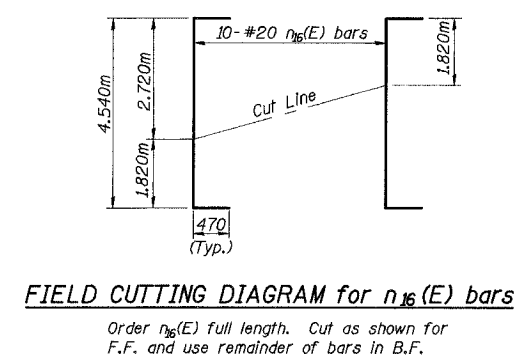
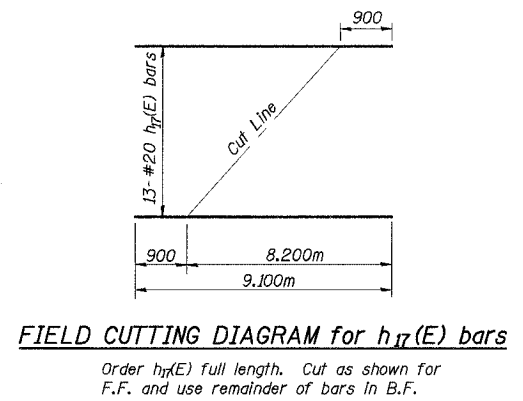
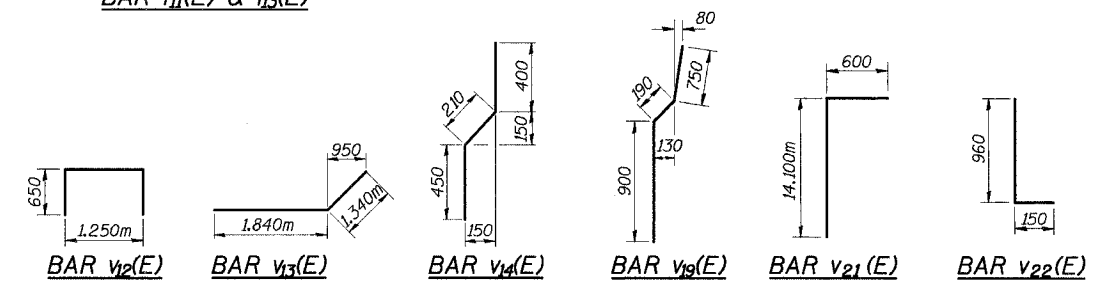
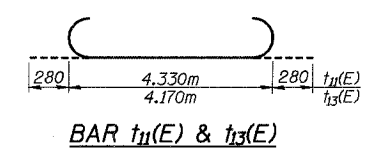
\* Length shown is height of spiral.

ILLINOIS DEPARTMENT OF TRANSPORTATION  
I-94 EAST BOUND / IL 394 SOUTH BOUND  
EAST ABUTMENT & WINGWALLS  
DETAILS & BILL OF MATERIALS  
EB I-94 OVER THORN CREEK  
F.A.I. 94 SECTION (0203.1 & 0312-708W) R-3  
COOK COUNTY  
STA. 20+509.000 STRUCTURE NO. 016-2807  
DATE JUL 18, 2005  
SCALE ---

HNTB



Rebar	A (m)	B (m)
n <sub>10</sub> (E)	2.720	0.470
n <sub>11</sub> (E)	3.250	0.550
n <sub>12</sub> (E)	3.510	0.470
n <sub>13</sub> (E)	4.000	0.550
n <sub>14</sub> (E)	1.800	0.410
n <sub>15</sub> (E)	3.000	0.650



Jk:m  
e:\34562\CADD\B1\SN-2807\cda\CTR\_19\_2807\cbl\96024\_2807.dgn  
18-AUG-2005 16:11

DESIGNED	JJK
CHECKED	KGN
DRAWN	LK
CHECKED	KGN