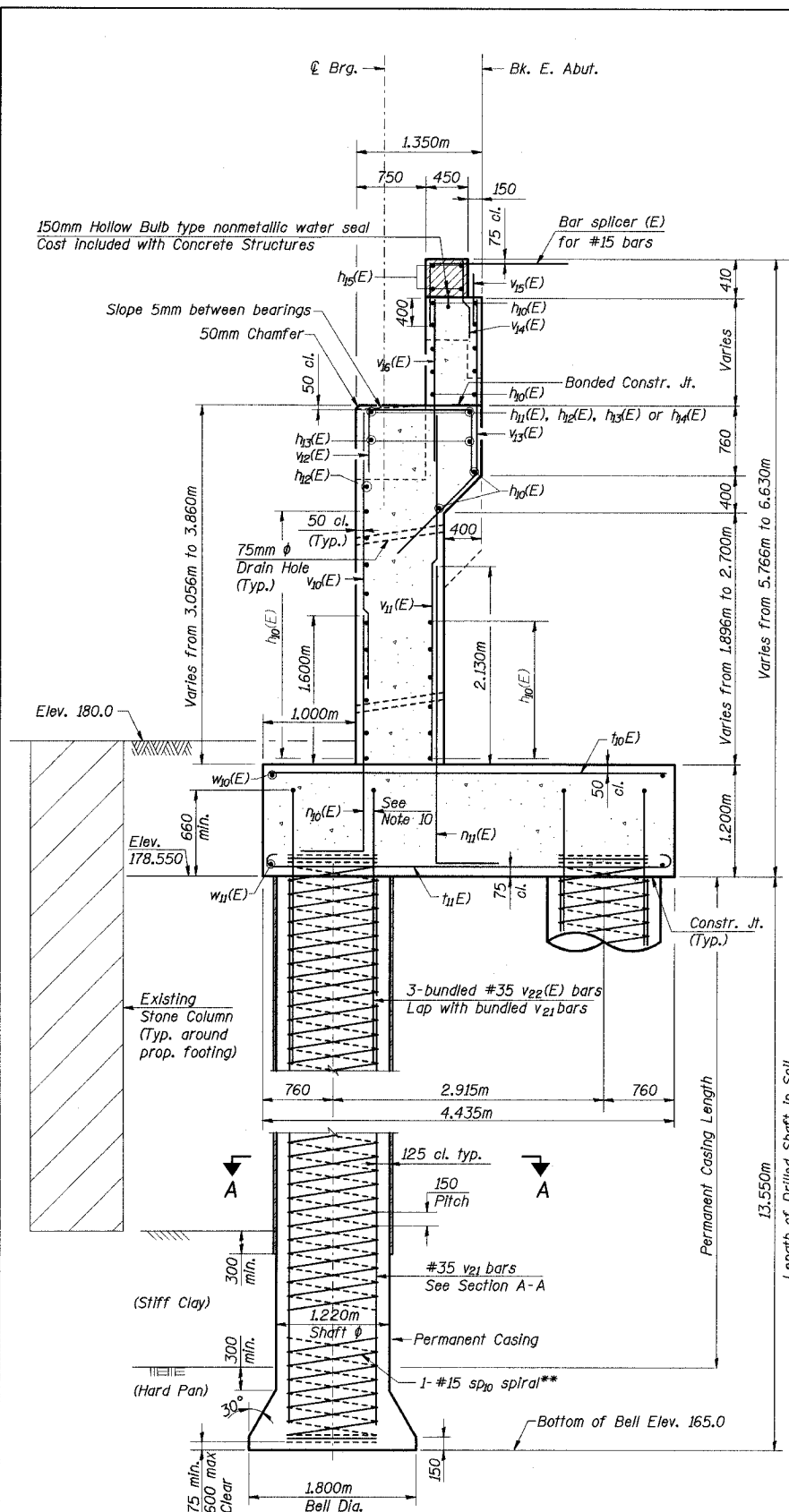


STATE OF ILLINOIS
DEPARTMENT OF TRANSPORTATION

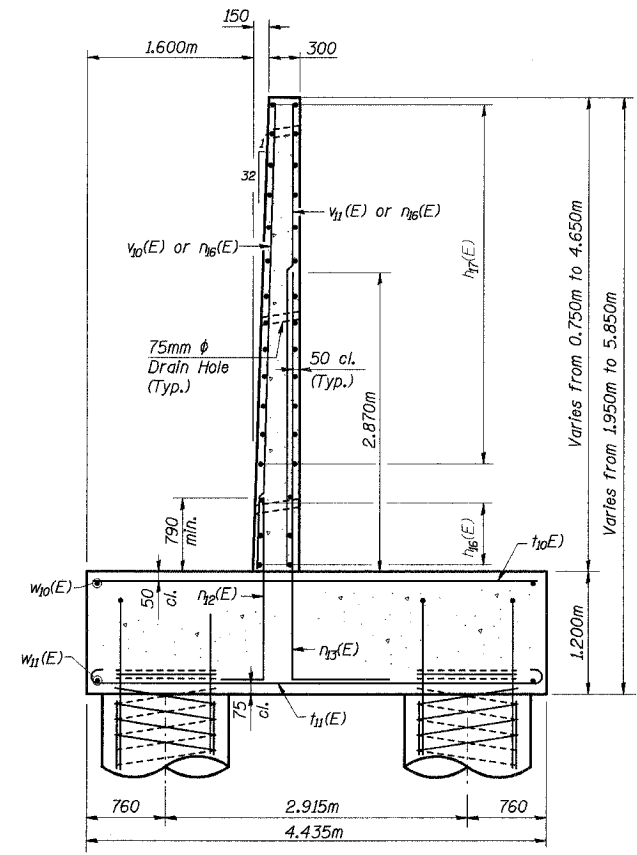
ROUTE NO.	SECTION	COUNTY	TOTAL SHEETS	SHEET NO.	SHEET NO. 36
F. A. I. 80/94		COOK	870	646	56 SHEETS
FED. ROAD DIST. NO. 1	ILLINOIS	FED. AID PROJECT-			
0203.1 & 0312-708WR-3		CONTRACT NO. 62108			



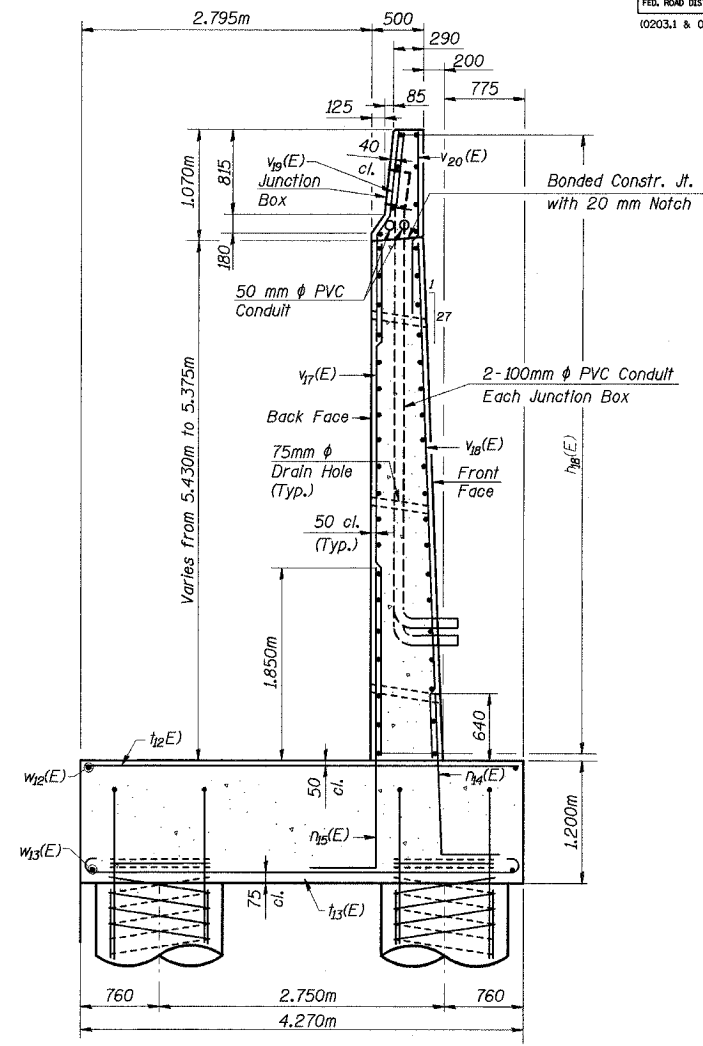
SECTION THRU E. ABUT. & DRILLED SHAFT
Looking North

** Provide 1-1/2 extra turns top and bottom of each drilled shaft. Spiral bar length based upon using 15m maximum bar length with 640mm minimum lap splice. Extend spiral 50mm into abutment footing. Provide min. 4-#15 spacers or equivalent (cost included with Reinforcement Bars).

DESIGNED	JJK
CHECKED	KGN
DRAWN	LK
CHECKED	KGN

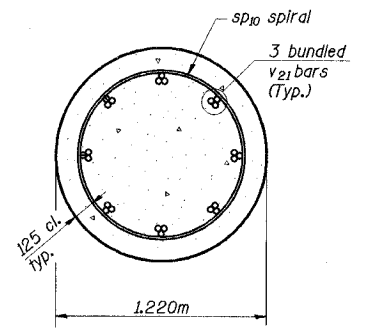


SECTION N. W.W.
Looking North



SECTION S. W.W.
Looking East

- Notes:
- All dimensions are in millimeters unless otherwise noted.
 - Work this sheet with Sheets 34-36 of 56.
 - Hatched area to be poured after superstructure forms have been removed. Quantity of concrete included with Concrete Superstructure.
 - Drilled shafts shall be installed according to the IDOT Guide Bridge Special Provision for Drilled Shafts.
 - Drilled Shaft Sequence of Construction: The installation of the drilled shafts shall be sequenced such that no adjacent drilled shafts are installed at the same time. See construction requirements of the IDOT Guide Bridge Special Provision.
 - Bottom of Bell Elevation, shaft length and shaft reinforcement lengths shown are estimates and should be verified and adjusted in the field as directed by the Engineer.
 - If field conditions dictate a shorter shaft length than shown, the Contractor shall cut the reinforcement bars to the required length or increase the lap length. If the shaft length is longer than indicated, the Contractor shall extend the reinforcement by providing additional reinforcement of equal size and lapping with the minimum lap length shown or increase the clearance at the bottom as indicated.
 - The drilled shaft and reinforcement shall be adjusted as required by the Engineer. Additional quantities furnished by the Contractor will be paid for at the unit price bid for the work.
 - At all locations where the reinforcement bars are not in direct contact, the Contractor shall provide sufficient spacing between the vertical bars, equal to the size of the largest concrete aggregate plus 15mm.
 - Orient hooks to allow placement of footing bars and stagger hooks vertically as needed.



SECTION A-A

ILLINOIS DEPARTMENT OF TRANSPORTATION
I-94 EAST BOUND / IL 394 SOUTH BOUND
**EAST ABUTMENT & WINGWALLS
SECTIONS & DRILLED SHAFT DETAILS**
EB I-94 OVER THORN CREEK
F.A.I. 94 SECTION (0203.1 & 0312-708W) R-3
COOK COUNTY
STA. 20+509.000 STRUCTURE NO. 016-2807
DATE JUL 18, 2005
SCALE ---
HNTB

JKm
e:\34955\CADD\N.SN_2807\cde\CTR_19_2807\ab\90044a_2807.dgn
18-AUG-2005 17:23