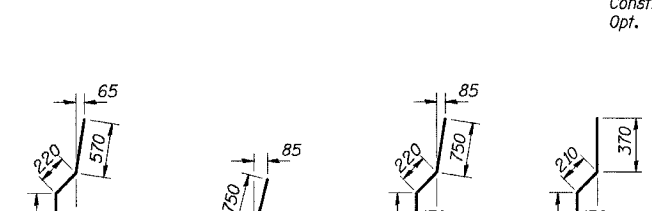
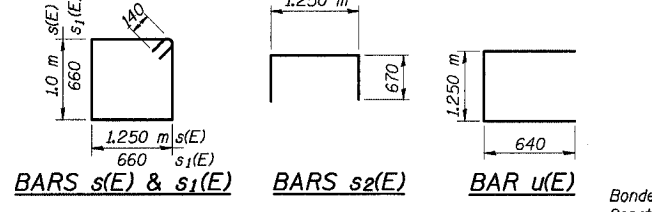
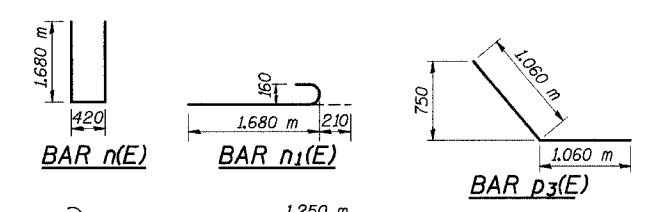
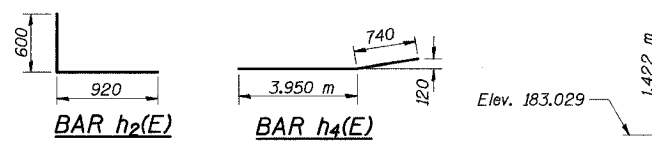
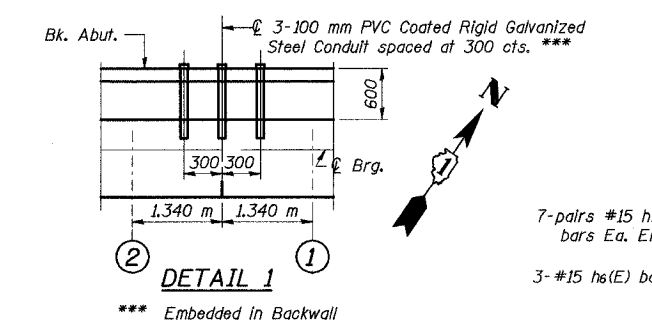


STATE OF ILLINOIS  
DEPARTMENT OF TRANSPORTATION

ROUTE NO.	SECTION	COUNTY	TOTAL SHEETS	SHEET NO.	SHEET NO. 32
F. A. I. 80/94	*	COOK	870	642	56 SHEETS
FED. ROAD DIST. NO. 1		ILLINOIS	FED. AID PROJECT-	CONTRACT NO. 62108	
(0203.1 & 0312-708W) R-3					

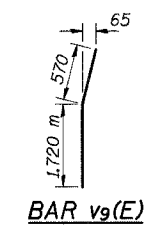
**BILL OF MATERIAL  
W. ABUTMENT**

Bar	No.	Size	Length (m)	Shape
h(E)	20	#15	7.47	
h1(E)	8	#20	7.53	
h2(E)	28	#15	1.52	
h3(E)	27	#15	4.67	
h4(E)	17	#15	4.71	
h5(E)	9	#15	3.20	
h6(E)	3	#15	2.26	
h7(E)	4	#15	1.92	
n(E)	28	#20	3.78	
n1(E)	12	#20	1.89	
ne(E)	56	#20	2.37	
p(E)	6	#25	7.42	
p1(E)	12	#25	5.77	
p2(E)	20	#25	8.19	
p3(E)	6	#25	2.12	
p4(E)	6	#25	7.62	
s(E)	42	#15	4.78	
s1(E)	32	#15	2.92	
s2(E)	38	#15	2.59	
u(E)	7	#20	2.53	
v(E)	98	#15	1.90	
v1(E)	49	#15	0.60	
v2(E)	14	#20	2.33	
v3(E)	6	#20	2.53	
v4(E)	14	#20	2.29	
v5(E)	11	#20	2.52	
v6(E)	49	#15	1.03	
v8(E)	16	#15	0.95	
v9(E)	3	#20	2.29	
sp	4	#15	182.0	
sp1	2	#15	101.7	
v7	56	#20	11.9	
Item	Unit	Quantity		
Structure Excavation	m <sup>3</sup>	137		
Porous Granular Embankment (Special)	m <sup>3</sup>	75		
Concrete Structures	m <sup>3</sup>	47.1		
Reinforcement Bars, Epoxy Coated	kg	4,250		
Reinforcement Bars, Drilled shaft in soil 610mm	m	25		
Reinforcement Bars, Drilled shaft in soil 915mm	m	49		

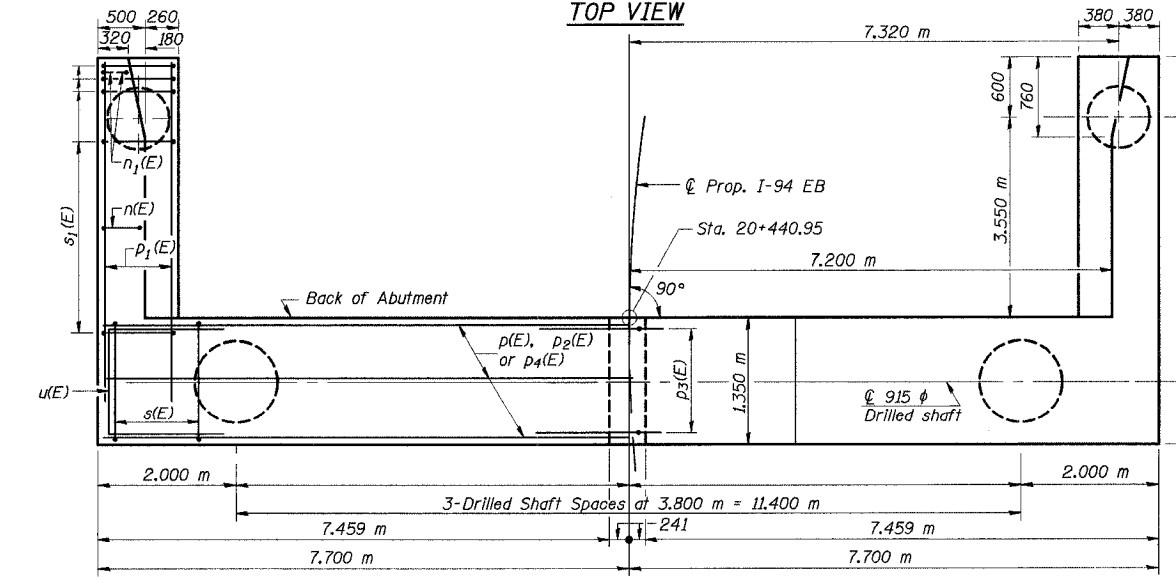
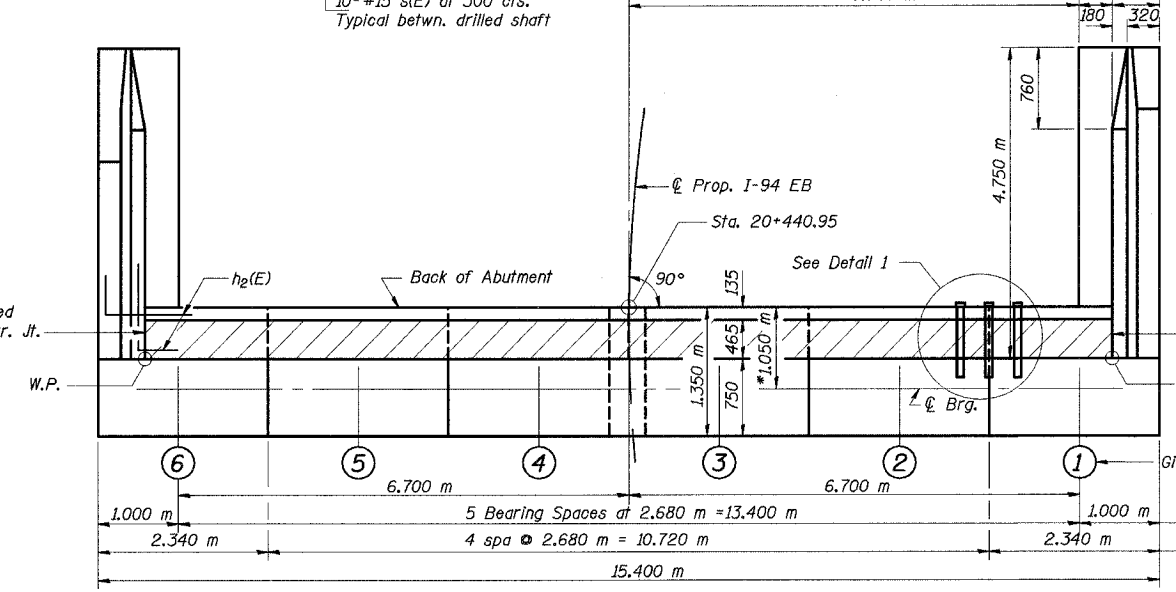
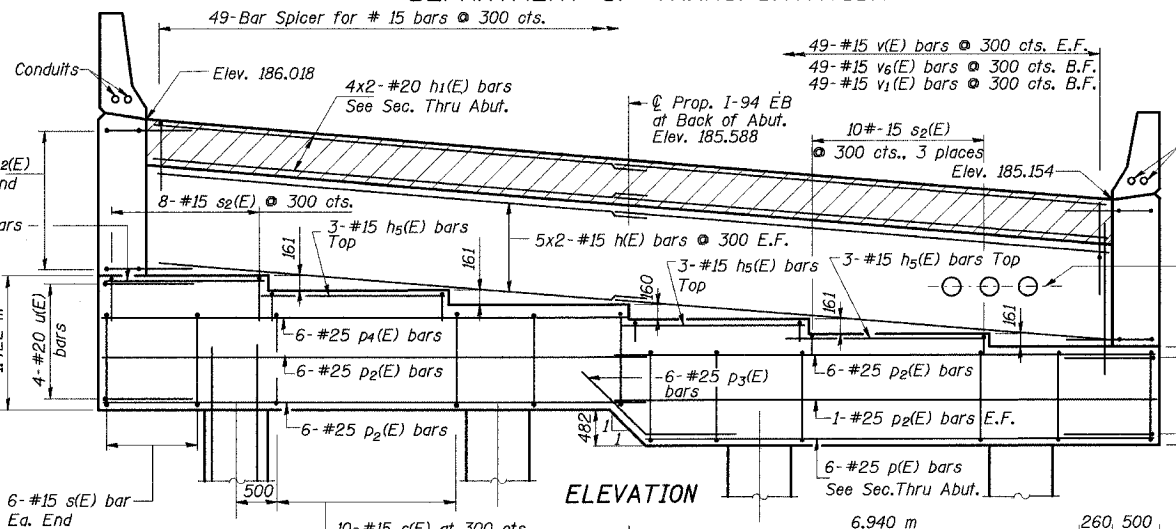


**SEAT ELEVATIONS**

Girder No.	Elevation
1	183.647
2	183.808
3	183.969
4	184.129
5	184.290
6	184.451



DESIGNED	R.A.
CHECKED	M.R.
DRAWN	R.A.
CHECKED	M.R. / H.T.



\*\* General Contractor to coordinate with Electrical Contractor for location of embedded conduits. Paid under Electrical work, but installed by Bridge Contractor. Installation included for payment under Concrete Structures.

\* Measured along  $\varnothing$  Prop. I-94 EB

**MIN. BAR LAP**  
#15 = 510  
#20 = 640  
#25 = 1060

- NOTES:**
- All dimensions are in millimeters (mm) except as noted.
  - Reinforcement bars designated (E) shall be epoxy coated.
  - Work this sheet with 33 of 56

ILLINOIS DEPARTMENT OF TRANSPORTATION  
I-94 EAST BOUND / IL 394 SOUTH BOUND  
**WEST ABUTMENT PLAN & ELEVATION**  
EB I-94 OVER THORN CREEK  
F.A.P. 332 SECTION (0203.1 & 0312-708W) R-3  
COOK COUNTY  
STA. 20+809.000 STRUCTURE NO. 016-2807  
DATE: 7/18/05  
SCALE: NTS  
**Soodan**  
Soodan & Associates, Inc.  
100 North LaSalle Street, Suite 1800  
Chicago, Illinois 60602

J:\Beauchamp\J134652\CADD\BA\SN\_2807\cadd\CTR\_19\_2807\eb190114a\_2807.dgn  
08-SEP-2005 13:54